

Data Path : Z:\pestpcbsrv\HPCHEM1\ECD\_0\Data\PO102218\  
 Data File : PO050362.D  
 Signal(s) : Signal #1: ECD1A.CH Signal #2: ECD2B.CH  
 Acq On : 22 Oct 2018 11:32  
 Operator : SM/SJ  
 Sample : J5366-01MSD  
 Misc :  
 ALS Vial : 6 Sample Multiplier: 1

**Instrument :**  
 ECD\_0  
**ClientSampleId :**  
 RBR200035MSD

**Manual Integrations**  
**APPROVED**  
 Sohil  
 10/23/2018 9:41:11 AM

Integration File signal 1: autoint1.e  
 Integration File signal 2: autoint2.e  
 Quant Time: Oct 22 11:57:26 2018  
 Quant Method : Z:\pestpcbsrv\HPCHEM1\ECD\_0\methods\PO101818.M  
 Quant Title : GC EXTRACTABLES  
 QLast Update : Fri Oct 19 02:02:26 2018  
 Response via : Initial Calibration  
 Integrator: ChemStation 6890 Scale Mode: Small noise peaks clipped

Volume Inj. : 2 µl  
 Signal #1 Phase : ZB-MR1 Signal #2 Phase: ZB-MR2  
 Signal #1 Info : 30Mx0.32mmx 0.50µ Signal #2 Info : 30M x 0.32mm x 0.25µm

Compound	RT#1	RT#2	Resp#1	Resp#2	ng/ml	ng/ml
-----						
System Monitoring Compounds						
1) SA Tetrachlo...	4.357	3.354	4276377	3600575	14.331m	18.314 #
2) SA Decachlor...	10.025	8.109	3713837	3808587	17.115m	19.925
Target Compounds						
3) L1 AR-1016-1	5.522	4.373	2028858	1656727	171.984m	214.358
4) L1 AR-1016-2	5.544	4.390	2943256	2514113	166.373m	186.406
5) L1 AR-1016-3	5.606	4.554	1723456	1432460	160.798m	218.110 #
6) L1 AR-1016-4	5.705	4.597	1432146	1196242	162.010	225.824 #
7) L1 AR-1016-5	5.998	4.798	1382530	935578	162.050m	135.095
31) L7 AR-1260-1	7.119	5.781	2740663	2632156	160.908m	173.743m
32) L7 AR-1260-2	7.376	5.964	3190084	3610839	161.316m	195.193m
33) L7 AR-1260-3	7.733	6.109	2087004	3140547	145.798	183.496m#
34) L7 AR-1260-4	7.959	6.567	2605305	2337193	160.899	172.390
35) L7 AR-1260-5	8.272	6.805	4672694	5929386	153.806m	194.036 #

(f)=RT Delta > 1/2 Window (#)=Amounts differ by > 25% (m)=manual int.

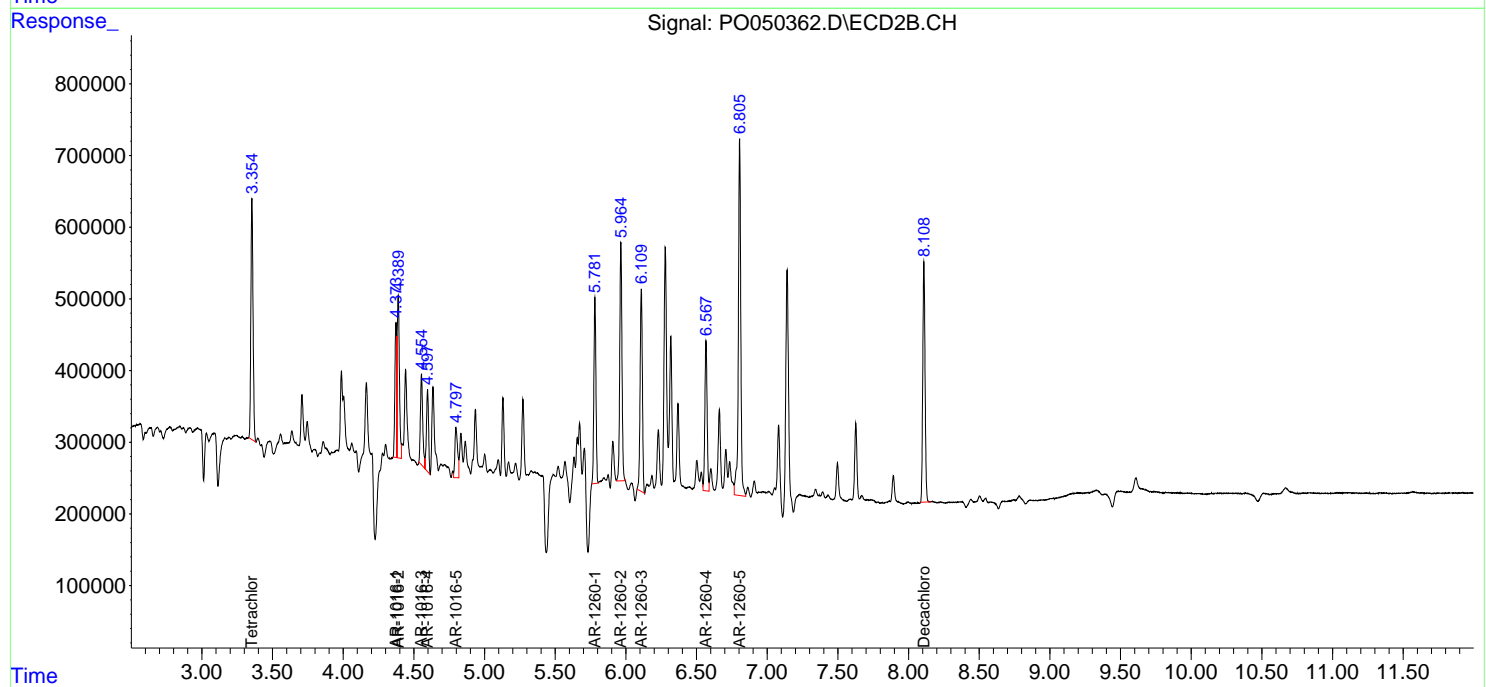
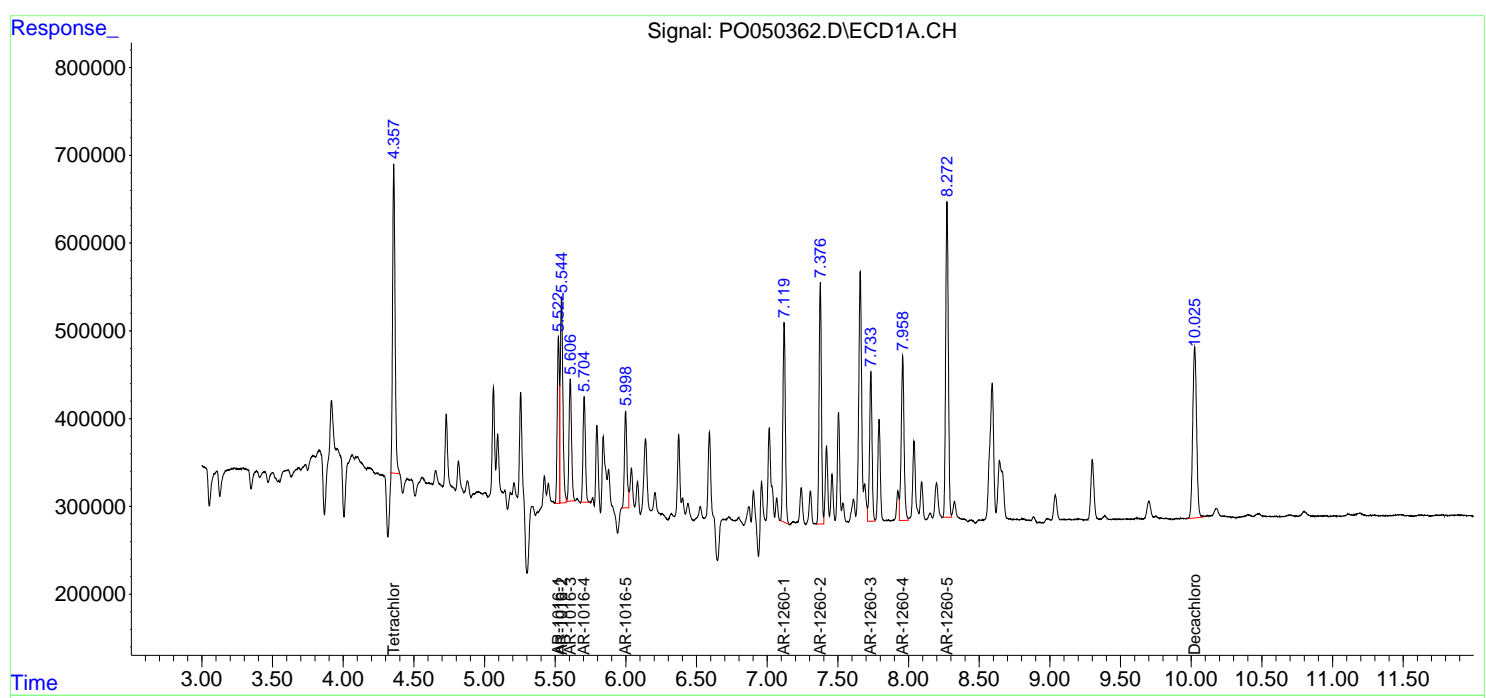
Data Path : Z:\pestpcbsrv\HPCHEM1\ECD\_O\Data\PO102218\  
 Data File : P0050362.D  
 Signal(s) : Signal #1: ECD1A.CH Signal #2: ECD2B.CH  
 Acq On : 22 Oct 2018 11:32  
 Operator : SM/SJ  
 Sample : J5366-01MSD  
 Misc :  
 ALS Vial : 6 Sample Multiplier: 1

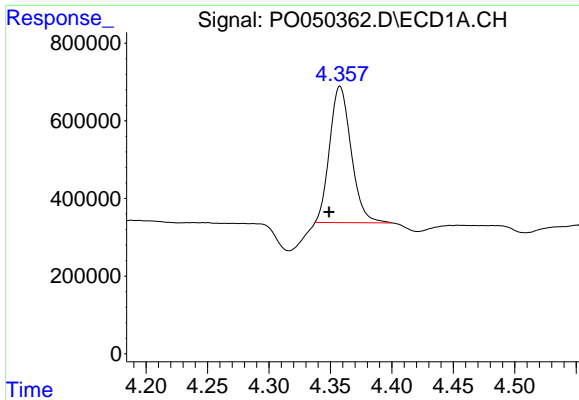
**Instrument :**  
 ECD\_O  
**Client Sampled :**  
 RBR200035MSD

**Manual Integrations**  
**APPROVED**  
 Sohil  
 10/23/2018 9:41:11 AM

Integration File signal 1: autoint1.e  
 Integration File signal 2: autoint2.e  
 Quant Time: Oct 22 11:57:26 2018  
 Quant Method : Z:\pestpcbsrv\HPCHEM1\ECD\_O\methods\PO101818.M  
 Quant Title : GC EXTRACTABLES  
 QLast Update : Fri Oct 19 02:02:26 2018  
 Response via : Initial Calibration  
 Integrator: ChemStation 6890 Scale Mode: Small noise peaks clipped

Volume Inj. : 2 µl  
 Signal #1 Phase : ZB-MR1 Signal #2 Phase: ZB-MR2  
 Signal #1 Info : 30Mx0.32mmx 0.50µ Signal #2 Info : 30M x 0.32mm x 0.25µm

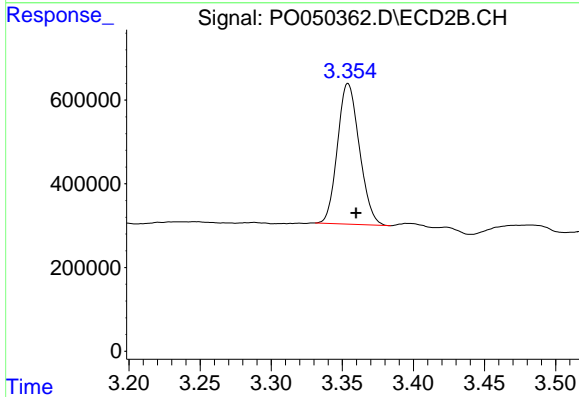




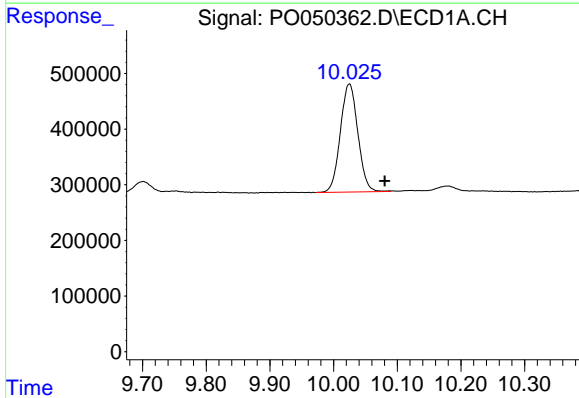
#1 Tetrachloro-m-xylene  
 R.T.: 4.357 min  
 Delta R.T.: 0.008 min  
 Response: 4276377  
 Conc: 14.33 ng/ml m

Instrument :  
 ECD\_O  
 ClientSampled :  
 RBR200035MSD

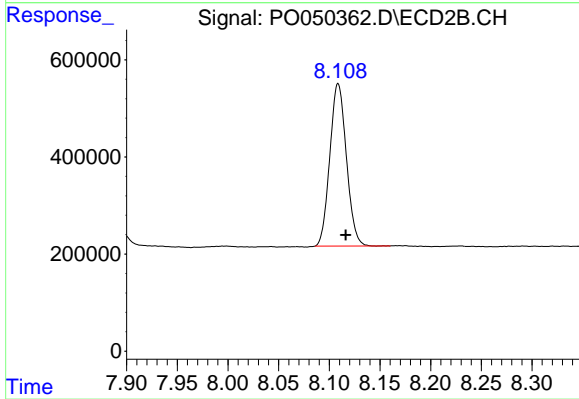
Manual Integrations  
 APPROVED  
 Sohil  
 10/23/2018 9:41:11 AM



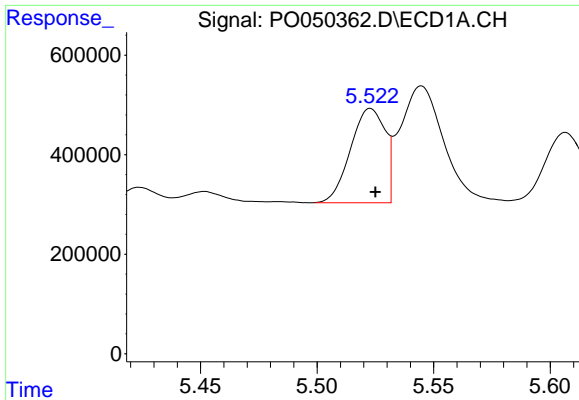
#1 Tetrachloro-m-xylene  
 R.T.: 3.354 min  
 Delta R.T.: -0.006 min  
 Response: 3600575  
 Conc: 18.31 ng/ml



#2 Decachlorobiphenyl  
 R.T.: 10.025 min  
 Delta R.T.: -0.056 min  
 Response: 3713837  
 Conc: 17.12 ng/ml m



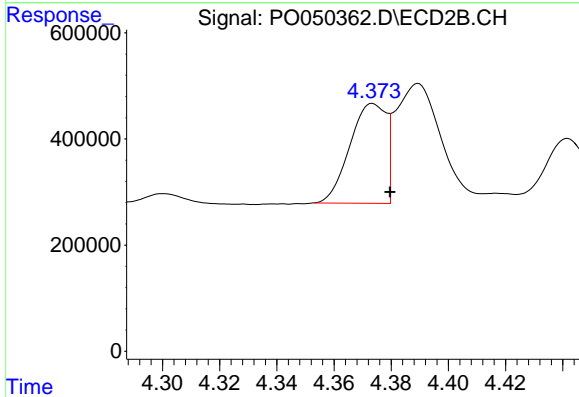
#2 Decachlorobiphenyl  
 R.T.: 8.109 min  
 Delta R.T.: -0.007 min  
 Response: 3808587  
 Conc: 19.93 ng/ml



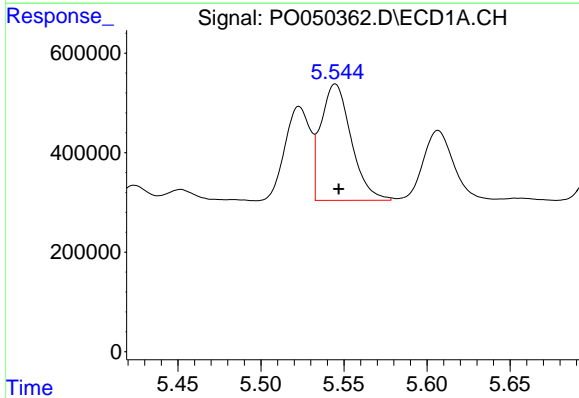
#3 AR-1016-1  
 R.T.: 5.522 min  
 Delta R.T.: -0.003 min  
 Response: 2028858  
 Conc: 171.98 ng/ml m

**Instrument :**  
 ECD\_O  
**ClientSampled :**  
 RBR200035MSD

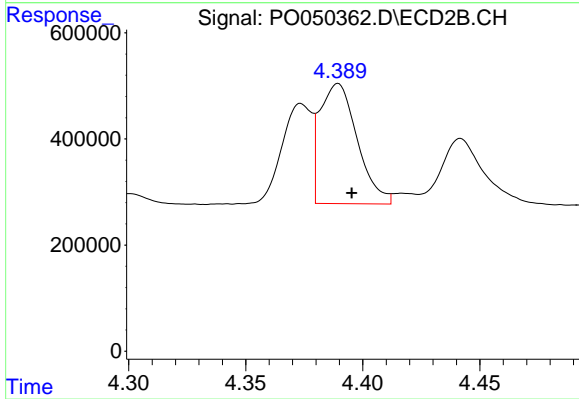
**Manual Integrations**  
**APPROVED**  
 Sohil  
 10/23/2018 9:41:11 AM



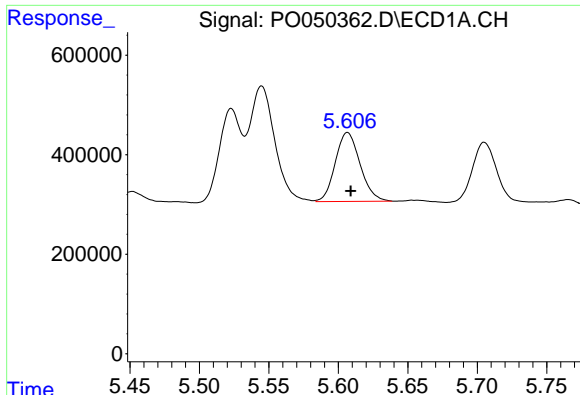
#3 AR-1016-1  
 R.T.: 4.373 min  
 Delta R.T.: -0.006 min  
 Response: 1656727  
 Conc: 214.36 ng/ml



#4 AR-1016-2  
 R.T.: 5.544 min  
 Delta R.T.: -0.002 min  
 Response: 2943256  
 Conc: 166.37 ng/ml m



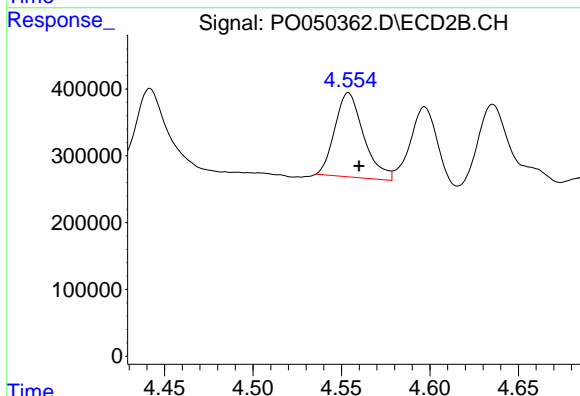
#4 AR-1016-2  
 R.T.: 4.390 min  
 Delta R.T.: -0.006 min  
 Response: 2514113  
 Conc: 186.41 ng/ml



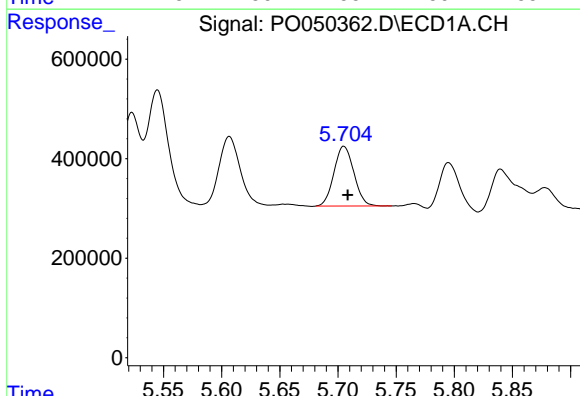
#5 AR-1016-3  
 R.T.: 5.606 min  
 Delta R.T.: -0.003 min  
 Response: 1723456  
 Conc: 160.80 ng/ml m

Instrument :  
 ECD\_O  
 ClientSampleId :  
 RBR200035MSD

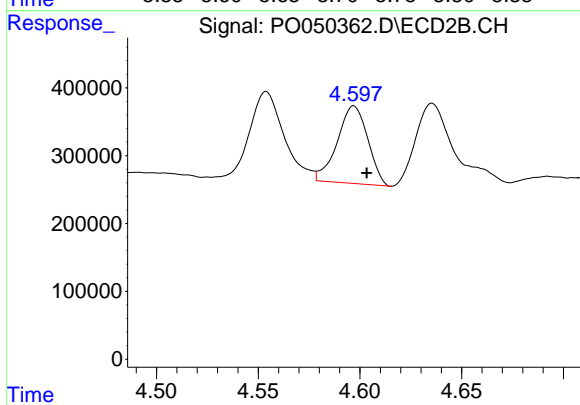
Manual Integrations  
 APPROVED  
 Sohil  
 10/23/2018 9:41:11 AM



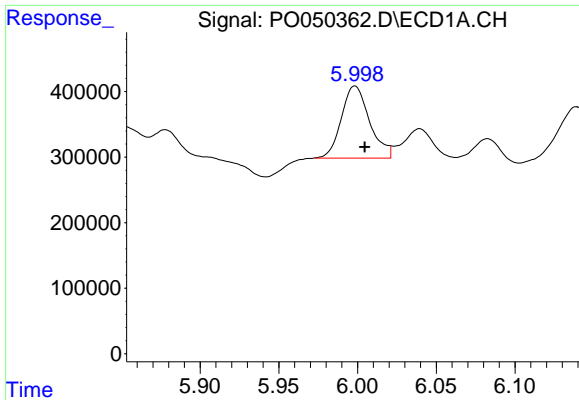
#5 AR-1016-3  
 R.T.: 4.554 min  
 Delta R.T.: -0.006 min  
 Response: 1432460  
 Conc: 218.11 ng/ml



#6 AR-1016-4  
 R.T.: 5.705 min  
 Delta R.T.: -0.003 min  
 Response: 1432146  
 Conc: 162.01 ng/ml



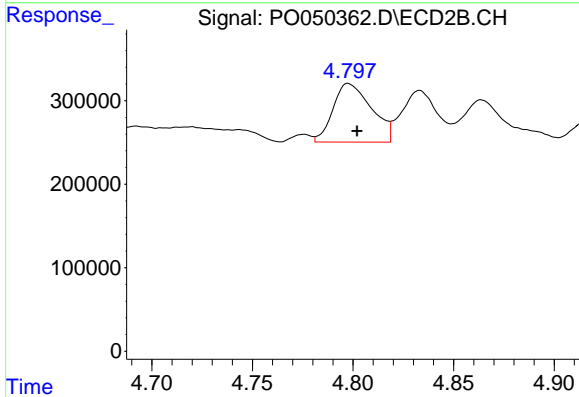
#6 AR-1016-4  
 R.T.: 4.597 min  
 Delta R.T.: -0.006 min  
 Response: 1196242  
 Conc: 225.82 ng/ml



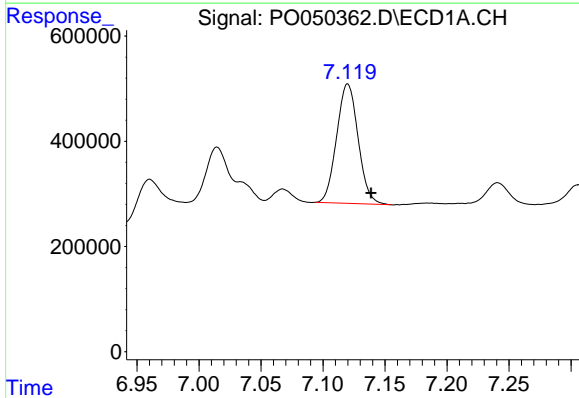
#7 AR-1016-5  
 R.T.: 5.998 min  
 Delta R.T.: -0.007 min  
 Response: 1382530  
 Conc: 162.05 ng/ml m

**Instrument :**  
 ECD\_O  
**ClientSampled :**  
 RBR200035MSD

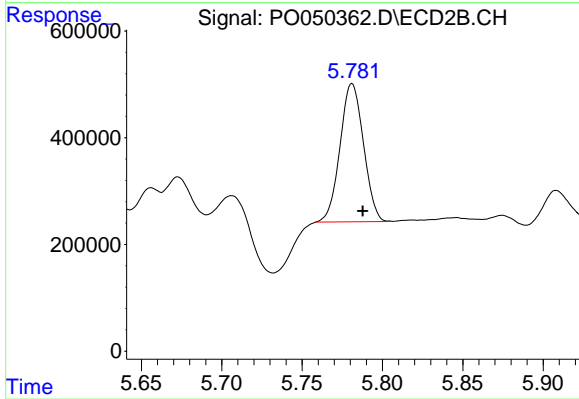
**Manual Integrations**  
**APPROVED**  
 Sohil  
 10/23/2018 9:41:11 AM



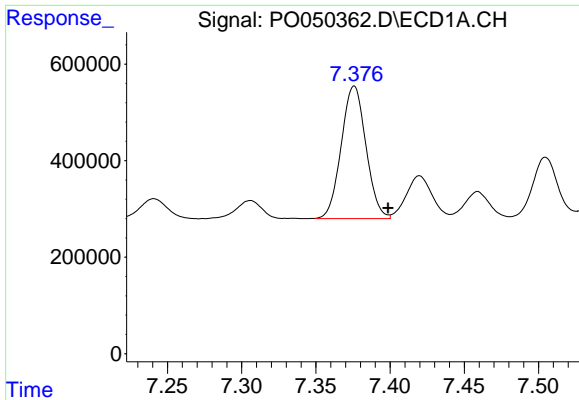
#7 AR-1016-5  
 R.T.: 4.798 min  
 Delta R.T.: -0.005 min  
 Response: 935578  
 Conc: 135.09 ng/ml



#31 AR-1260-1  
 R.T.: 7.119 min  
 Delta R.T.: -0.019 min  
 Response: 2740663  
 Conc: 160.91 ng/ml m



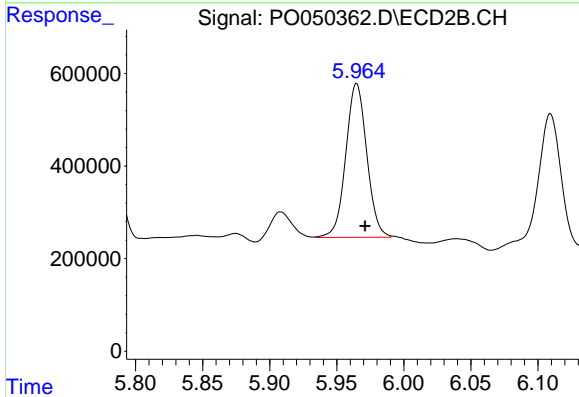
#31 AR-1260-1  
 R.T.: 5.781 min  
 Delta R.T.: -0.007 min  
 Response: 2632156  
 Conc: 173.74 ng/ml m



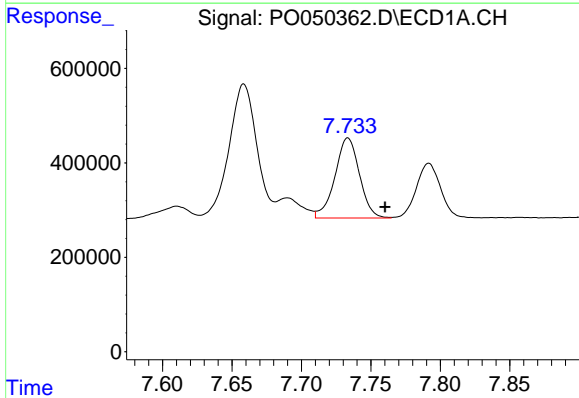
#32 AR-1260-2  
 R.T.: 7.376 min  
 Delta R.T.: -0.023 min  
 Response: 3190084  
 Conc: 161.32 ng/ml m

**Instrument :**  
 ECD\_O  
**ClientSampled :**  
 RBR200035MSD

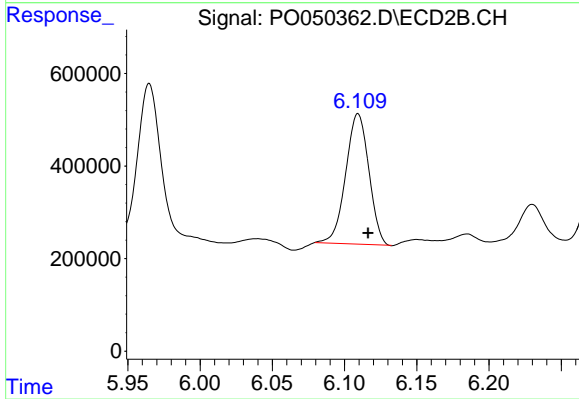
**Manual Integrations**  
**APPROVED**  
 Sohil  
 10/23/2018 9:41:11 AM



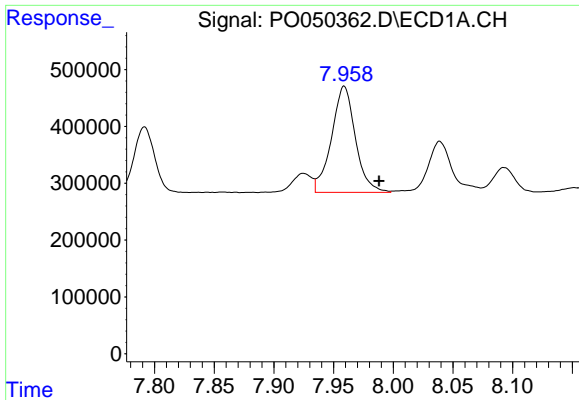
#32 AR-1260-2  
 R.T.: 5.964 min  
 Delta R.T.: -0.007 min  
 Response: 3610839  
 Conc: 195.19 ng/ml m



#33 AR-1260-3  
 R.T.: 7.733 min  
 Delta R.T.: -0.027 min  
 Response: 2087004  
 Conc: 145.80 ng/ml



#33 AR-1260-3  
 R.T.: 6.109 min  
 Delta R.T.: -0.007 min  
 Response: 3140547  
 Conc: 183.50 ng/ml m

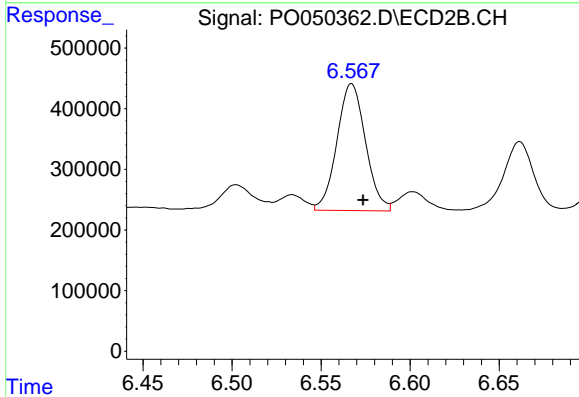


#34 AR-1260-4

R.T.: 7.959 min  
 Delta R.T.: -0.029 min  
 Response: 2605305  
 Conc: 160.90 ng/ml

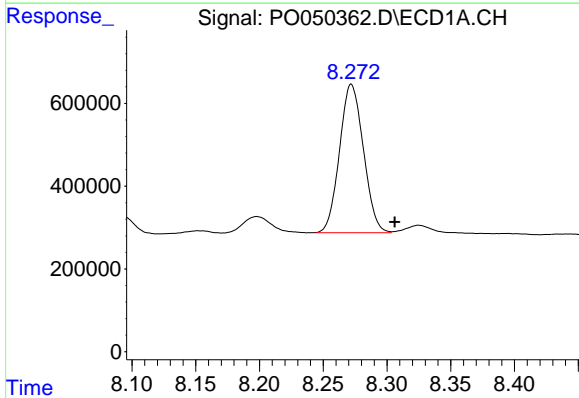
Instrument :  
 ECD\_O  
 ClientSampled :  
 RBR200035MSD

Manual Integrations  
 APPROVED  
 Sohil  
 10/23/2018 9:41:11 AM



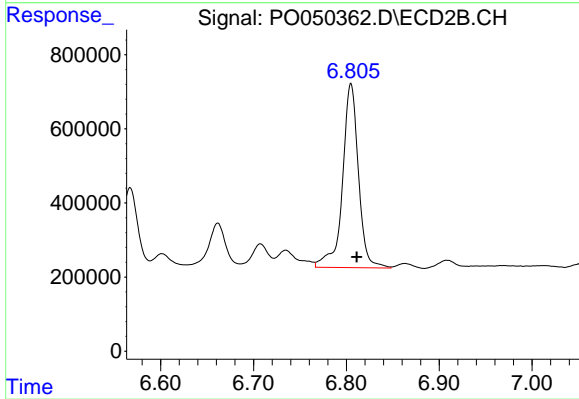
#34 AR-1260-4

R.T.: 6.567 min  
 Delta R.T.: -0.006 min  
 Response: 2337193  
 Conc: 172.39 ng/ml



#35 AR-1260-5

R.T.: 8.272 min  
 Delta R.T.: -0.035 min  
 Response: 4672694  
 Conc: 153.81 ng/ml m



#35 AR-1260-5

R.T.: 6.805 min  
 Delta R.T.: -0.006 min  
 Response: 5929386  
 Conc: 194.04 ng/ml