

Data Path : Z:\pestpcbsrv\HPCHEM1\ECD_0\Data\PO102218\
 Data File : PO050389.D
 Signal(s) : Signal #1: ECD1A.CH Signal #2: ECD2B.CH
 Acq On : 22 Oct 2018 20:27
 Operator : SM/SJ
 Sample : PB114046BL
 Misc :
 ALS Vial : 19 Sample Multiplier: 1

Instrument :
 ECD_0
 ClientSampleId :
 PB114046BL

Integration File signal 1: autoint1.e
 Integration File signal 2: autoint2.e
 Quant Time: Oct 23 00:53:57 2018
 Quant Method : Z:\pestpcbsrv\HPCHEM1\ECD_0\methods\PO101818.M
 Quant Title : GC EXTRACTABLES
 QLast Update : Fri Oct 19 02:02:26 2018
 Response via : Initial Calibration
 Integrator: ChemStation 6890 Scale Mode: Small noise peaks clipped

Volume Inj. : 2 µl
 Signal #1 Phase : ZB-MR1 Signal #2 Phase: ZB-MR2
 Signal #1 Info : 30Mx0.32mmx 0.50µ Signal #2 Info : 30M x 0.32mm x 0.25µm

Compound	RT#1	RT#2	Resp#1	Resp#2	ng/ml	ng/ml

System Monitoring Compounds						
1) SA Tetrachlo...	4.358	3.355	5129057	4048500	17.189	20.592
2) SA Decachlor...	10.023	8.109	3951107	3960579	18.209m	20.720

Target Compounds

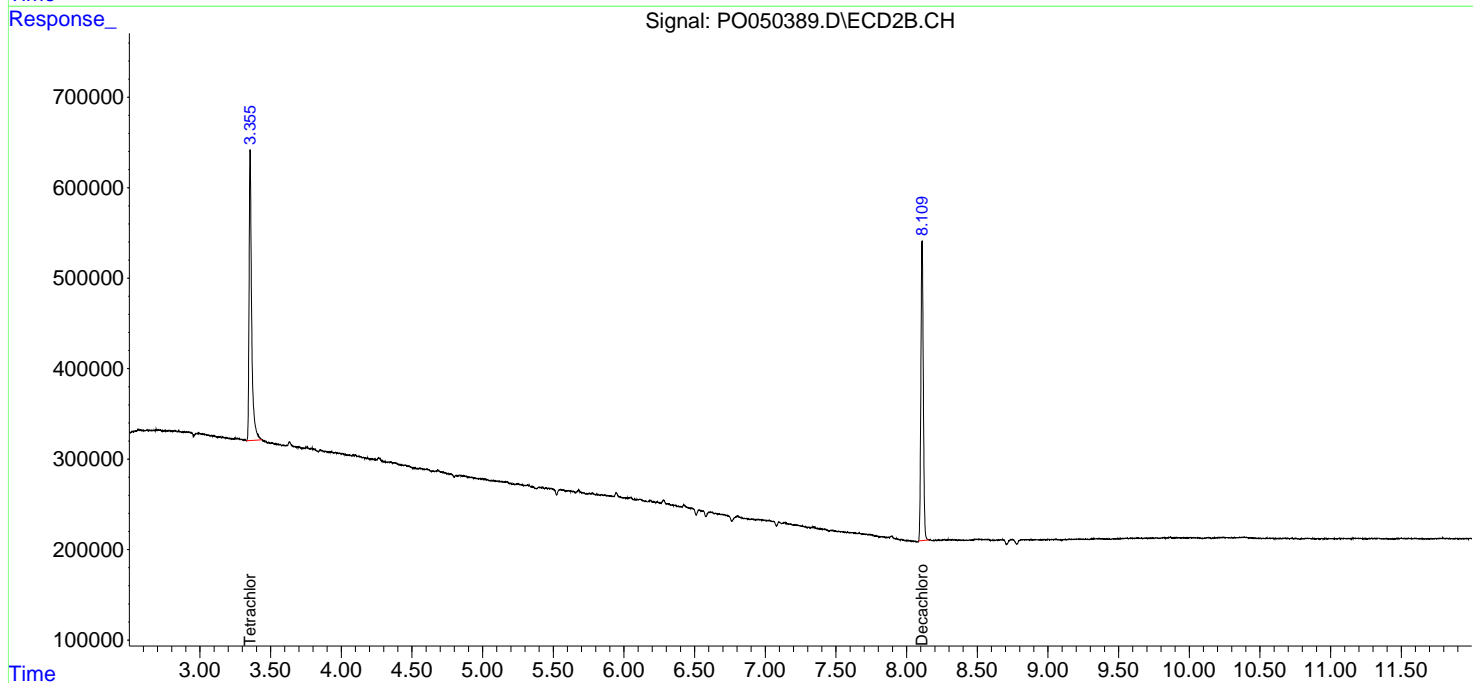
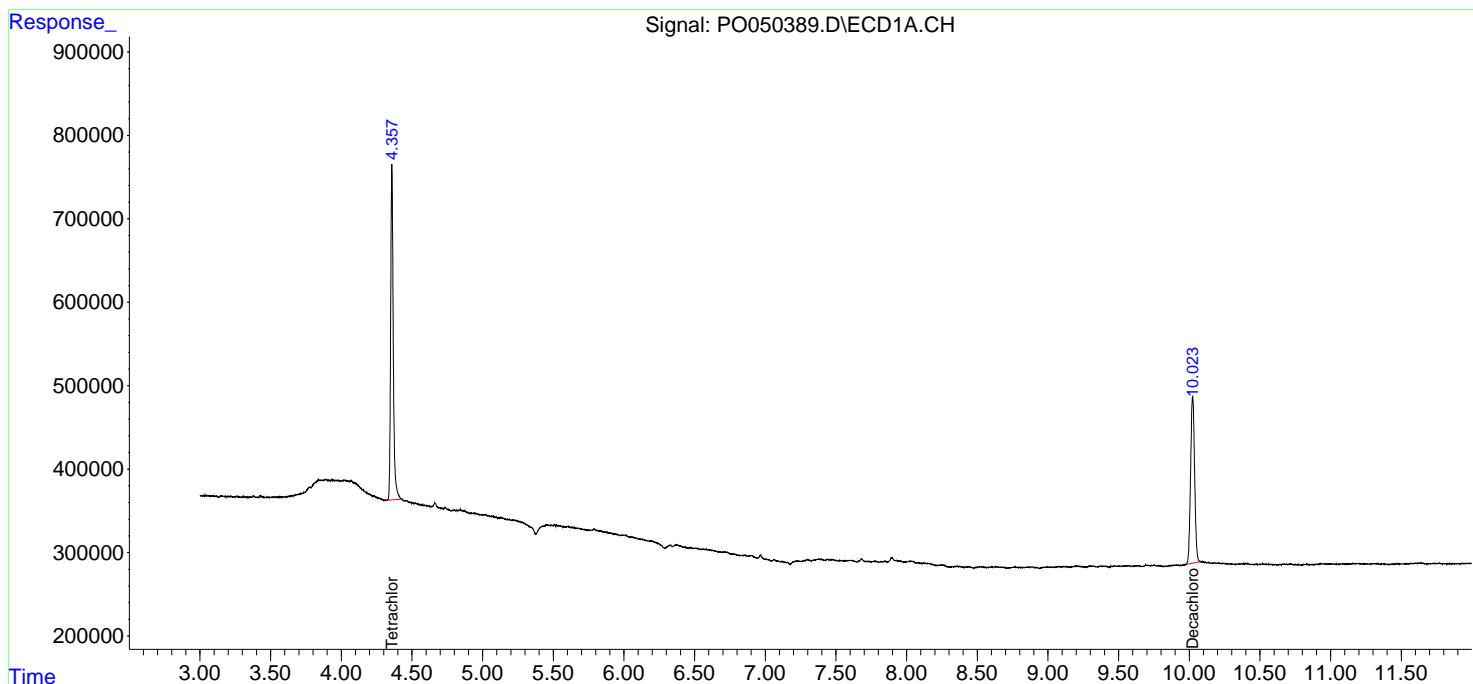
(f)=RT Delta > 1/2 Window (#)=Amounts differ by > 25% (m)=manual int.

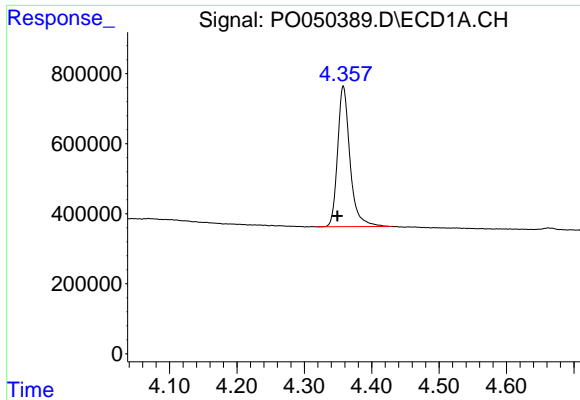
Data Path : Z:\pestpcbsrv\HPCHEM1\ECD_0\Data\PO102218\
 Data File : PO050389.D
 Signal(s) : Signal #1: ECD1A.CH Signal #2: ECD2B.CH
 Acq On : 22 Oct 2018 20:27
 Operator : SM/SJ
 Sample : PB114046BL
 Misc :
 ALS Vial : 19 Sample Multiplier: 1

Instrument :
 ECD_0
 ClientSampleId :
 PB114046BL

Integration File signal 1: autoint1.e
 Integration File signal 2: autoint2.e
 Quant Time: Oct 23 00:53:57 2018
 Quant Method : Z:\pestpcbsrv\HPCHEM1\ECD_0\methods\PO101818.M
 Quant Title : GC EXTRACTABLES
 QLast Update : Fri Oct 19 02:02:26 2018
 Response via : Initial Calibration
 Integrator: ChemStation 6890 Scale Mode: Small noise peaks clipped

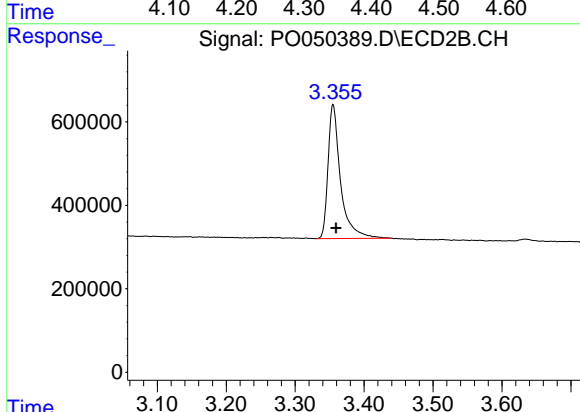
Volume Inj. : 2 µl
 Signal #1 Phase : ZB-MR1 Signal #2 Phase: ZB-MR2
 Signal #1 Info : 30Mx0.32mmx 0.50µ Signal #2 Info : 30M x 0.32mm x 0.25µm



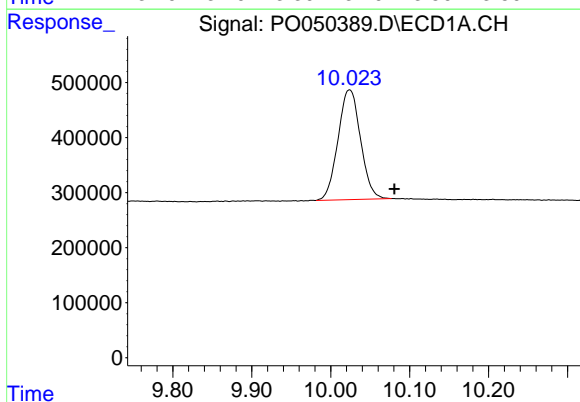


#1 Tetrachloro-m-xylene
 R.T.: 4.358 min
 Delta R.T.: 0.009 min
 Response: 5129057
 Conc: 17.19 ng/ml

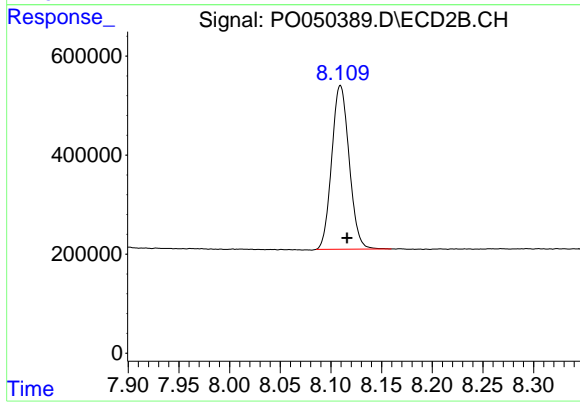
Instrument :
 ECD_O
 ClientSampleId :
 PB114046BL



#1 Tetrachloro-m-xylene
 R.T.: 3.355 min
 Delta R.T.: -0.005 min
 Response: 4048500
 Conc: 20.59 ng/ml



#2 Decachlorobiphenyl
 R.T.: 10.023 min
 Delta R.T.: -0.057 min
 Response: 3951107
 Conc: 18.21 ng/ml m



#2 Decachlorobiphenyl
 R.T.: 8.109 min
 Delta R.T.: -0.007 min
 Response: 3960579
 Conc: 20.72 ng/ml