

Data Path : Z:\pestpcbsrv\HPCHEM1\ECD_0\Data\PO102218\
 Data File : PO050393.D
 Signal(s) : Signal #1: ECD1A.CH Signal #2: ECD2B.CH
 Acq On : 22 Oct 2018 21:43
 Operator : SM/SJ
 Sample : J5601-02
 Misc :
 ALS Vial : 23 Sample Multiplier: 1

Instrument :
 ECD_0
ClientSampleId :
 101818-SIDI-E-D-M

Manual Integrations
APPROVED

Sohil
 10/23/2018 9:41:57 AM

Integration File signal 1: autoint1.e
 Integration File signal 2: autoint2.e
 Quant Time: Oct 23 00:57:15 2018
 Quant Method : Z:\pestpcbsrv\HPCHEM1\ECD_0\methods\PO101818.M
 Quant Title : GC EXTRACTABLES
 QLast Update : Fri Oct 19 02:02:26 2018
 Response via : Initial Calibration
 Integrator: ChemStation 6890 Scale Mode: Small noise peaks clipped

Volume Inj. : 2 µl
 Signal #1 Phase : ZB-MR1 Signal #2 Phase: ZB-MR2
 Signal #1 Info : 30Mx0.32mmx 0.50µ Signal #2 Info : 30M x 0.32mm x 0.25µm

Compound	RT#1	RT#2	Resp#1	Resp#2	ng/ml	ng/ml

System Monitoring Compounds						
1) SA Tetrachlo...	4.358	3.355	5401657	3478796	18.103m	17.695
2) SA Decachlor...	10.022	8.108	4452284	4385030	20.519m	22.941m

Target Compounds

 (f)=RT Delta > 1/2 Window (#)=Amounts differ by > 25% (m)=manual int.

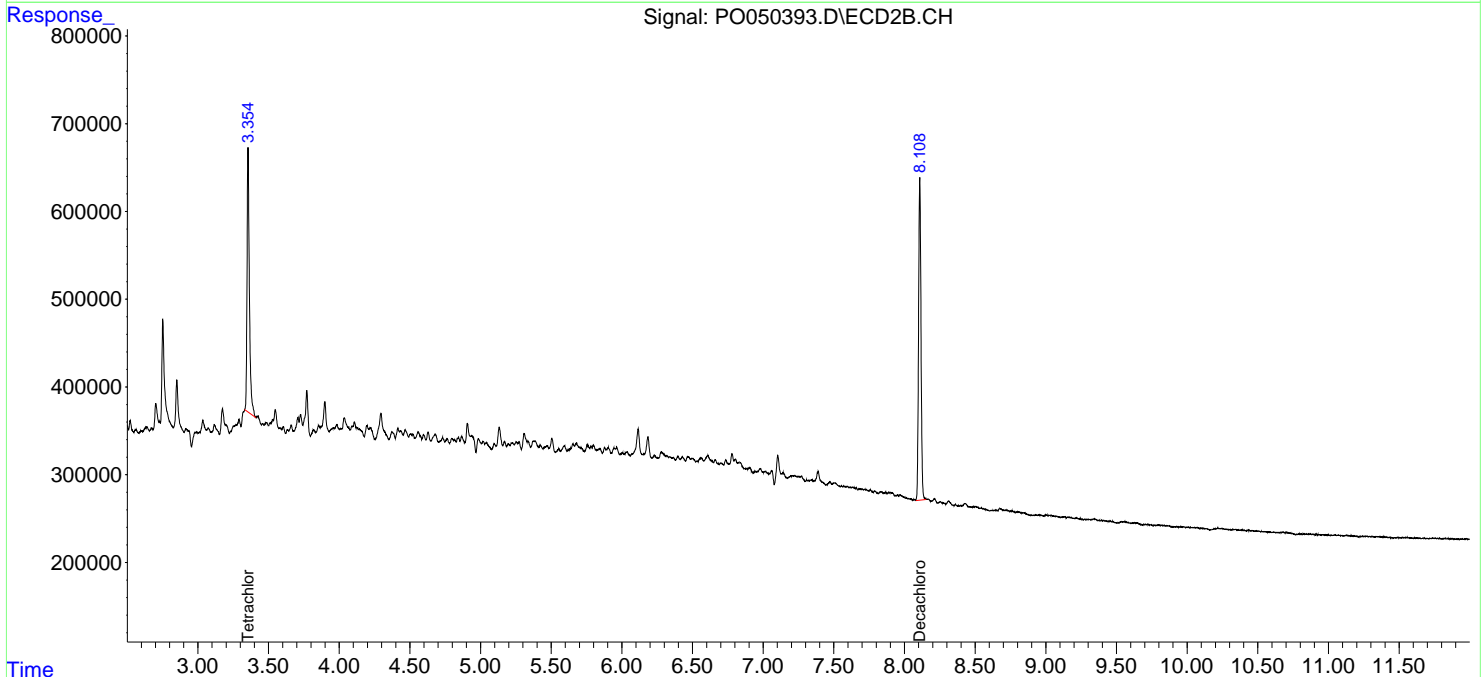
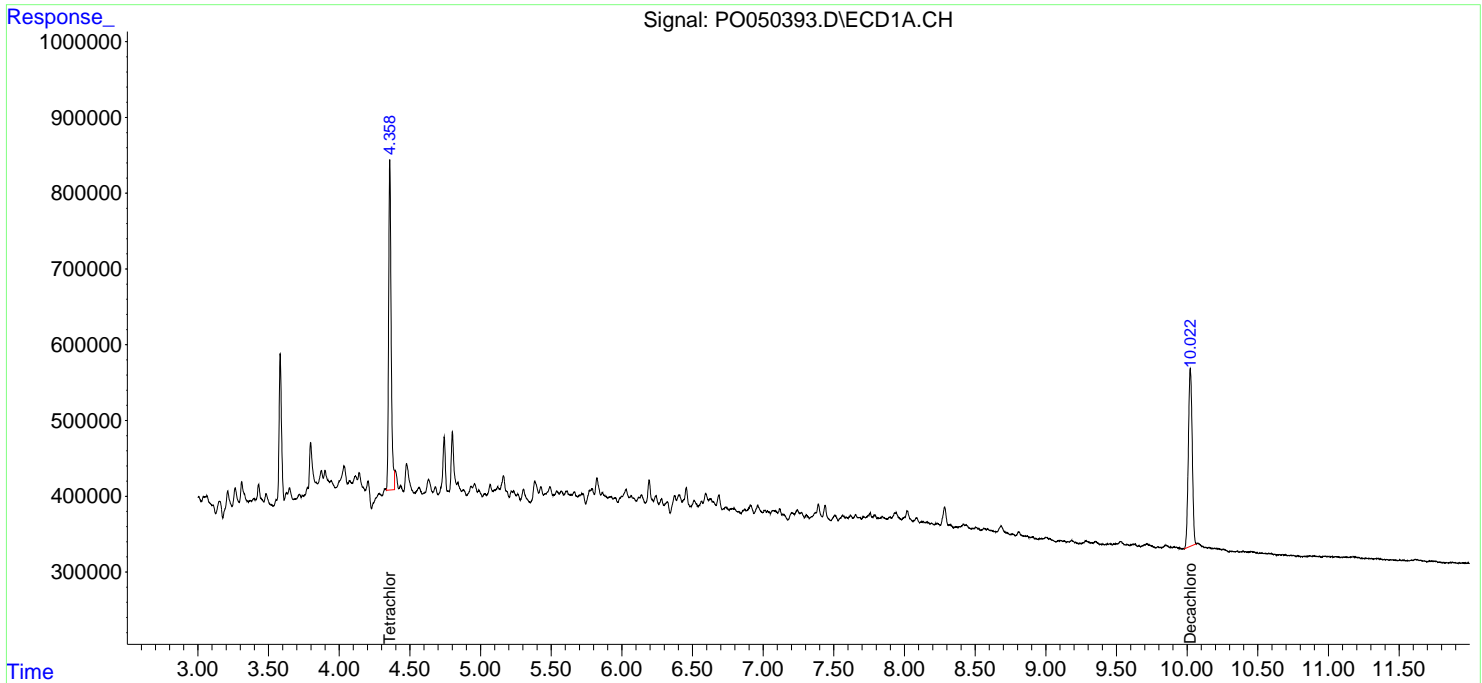
Data Path : Z:\pestpcbsrv\HPCHEM1\ECD_O\Data\PO102218\
 Data File : PO050393.D
 Signal(s) : Signal #1: ECD1A.CH Signal #2: ECD2B.CH
 Acq On : 22 Oct 2018 21:43
 Operator : SM/SJ
 Sample : J5601-02
 Misc :
 ALS Vial : 23 Sample Multiplier: 1

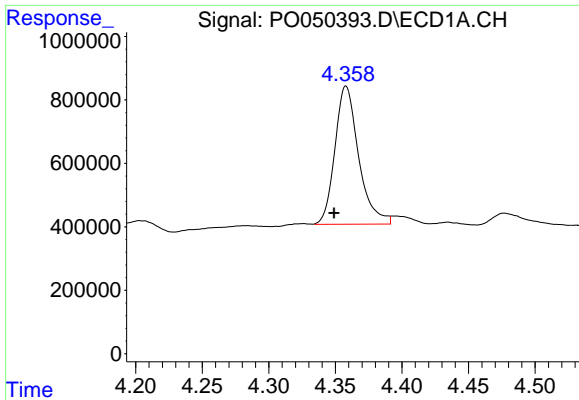
Instrument :
 ECD_O
ClientSampled :
 101818-SIDI-E-D-M

Manual Integrations
APPROVED
 Sohil
 10/23/2018 9:41:57 AM

Integration File signal 1: autoint1.e
 Integration File signal 2: autoint2.e
 Quant Time: Oct 23 00:57:15 2018
 Quant Method : Z:\pestpcbsrv\HPCHEM1\ECD_O\methods\PO101818.M
 Quant Title : GC EXTRACTABLES
 QLast Update : Fri Oct 19 02:02:26 2018
 Response via : Initial Calibration
 Integrator: ChemStation 6890 Scale Mode: Small noise peaks clipped

Volume Inj. : 2 µl
 Signal #1 Phase : ZB-MR1 Signal #2 Phase: ZB-MR2
 Signal #1 Info : 30Mx0.32mmx 0.50µm Signal #2 Info : 30M x 0.32mm x 0.25µm

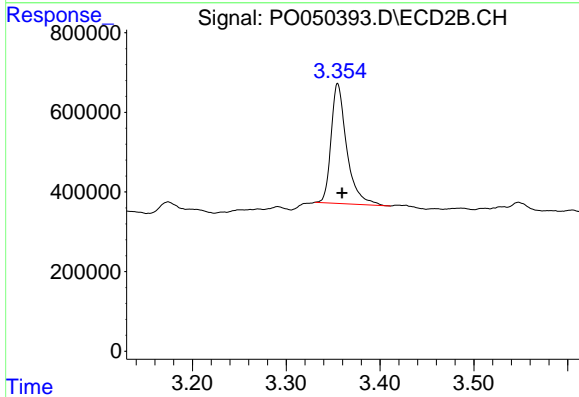




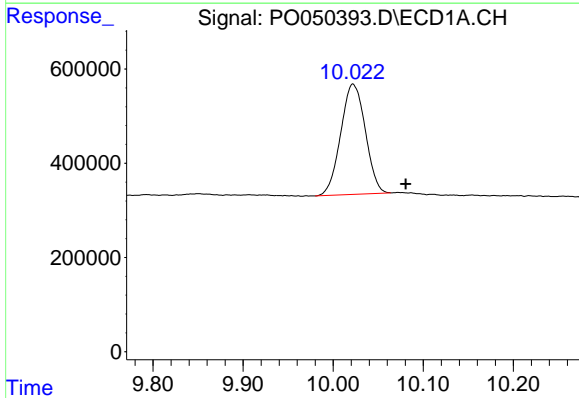
#1 Tetrachloro-m-xylene
 R.T.: 4.358 min
 Delta R.T.: 0.009 min
 Response: 5401657
 Conc: 18.10 ng/ml m

Instrument :
 ECD_O
 ClientSampleId :
 101818-SIDI-E-D-M

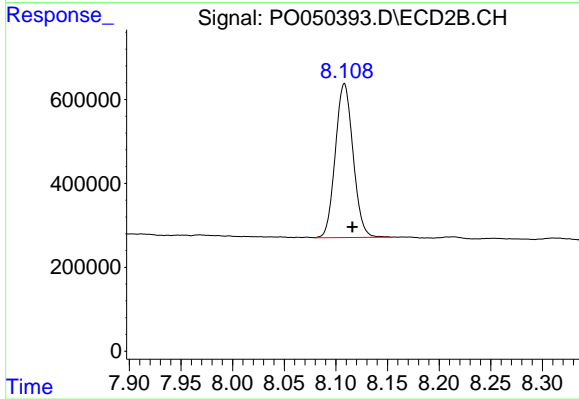
Manual Integrations
 APPROVED
 Sohil
 10/23/2018 9:41:57 AM



#1 Tetrachloro-m-xylene
 R.T.: 3.355 min
 Delta R.T.: -0.005 min
 Response: 3478796
 Conc: 17.69 ng/ml



#2 Decachlorobiphenyl
 R.T.: 10.022 min
 Delta R.T.: -0.059 min
 Response: 4452284
 Conc: 20.52 ng/ml m



#2 Decachlorobiphenyl
 R.T.: 8.108 min
 Delta R.T.: -0.008 min
 Response: 4385030
 Conc: 22.94 ng/ml m