

Data Path : Z:\pestpcbsrv\HPCHEM1\ECD_0\Data\PO102218\
 Data File : PO050400.D
 Signal(s) : Signal #1: ECD1A.CH Signal #2: ECD2B.CH
 Acq On : 22 Oct 2018 23:55
 Operator : SM/SJ
 Sample : I.BLK
 Misc :
 ALS Vial : 2 Sample Multiplier: 1

Instrument :
 ECD_0
 ClientSampleId :
 I.BLK

Integration File signal 1: autoint1.e
 Integration File signal 2: autoint2.e
 Quant Time: Oct 23 01:03:41 2018
 Quant Method : Z:\pestpcbsrv\HPCHEM1\ECD_0\methods\PO101818.M
 Quant Title : GC EXTRACTABLES
 QLast Update : Fri Oct 19 02:02:26 2018
 Response via : Initial Calibration
 Integrator: ChemStation 6890 Scale Mode: Small noise peaks clipped

Volume Inj. : 2 µl
 Signal #1 Phase : ZB-MR1 Signal #2 Phase: ZB-MR2
 Signal #1 Info : 30Mx0.32mmx 0.50µ Signal #2 Info : 30M x 0.32mm x 0.25µm

Compound	RT#1	RT#2	Resp#1	Resp#2	ng/ml	ng/ml

System Monitoring Compounds						
1) SA Tetrachlo...	4.358	3.355	7004948	5510770	23.476	28.030
2) SA Decachlor...	10.023	8.108	5068357	5198148	23.358m	27.195

Target Compounds

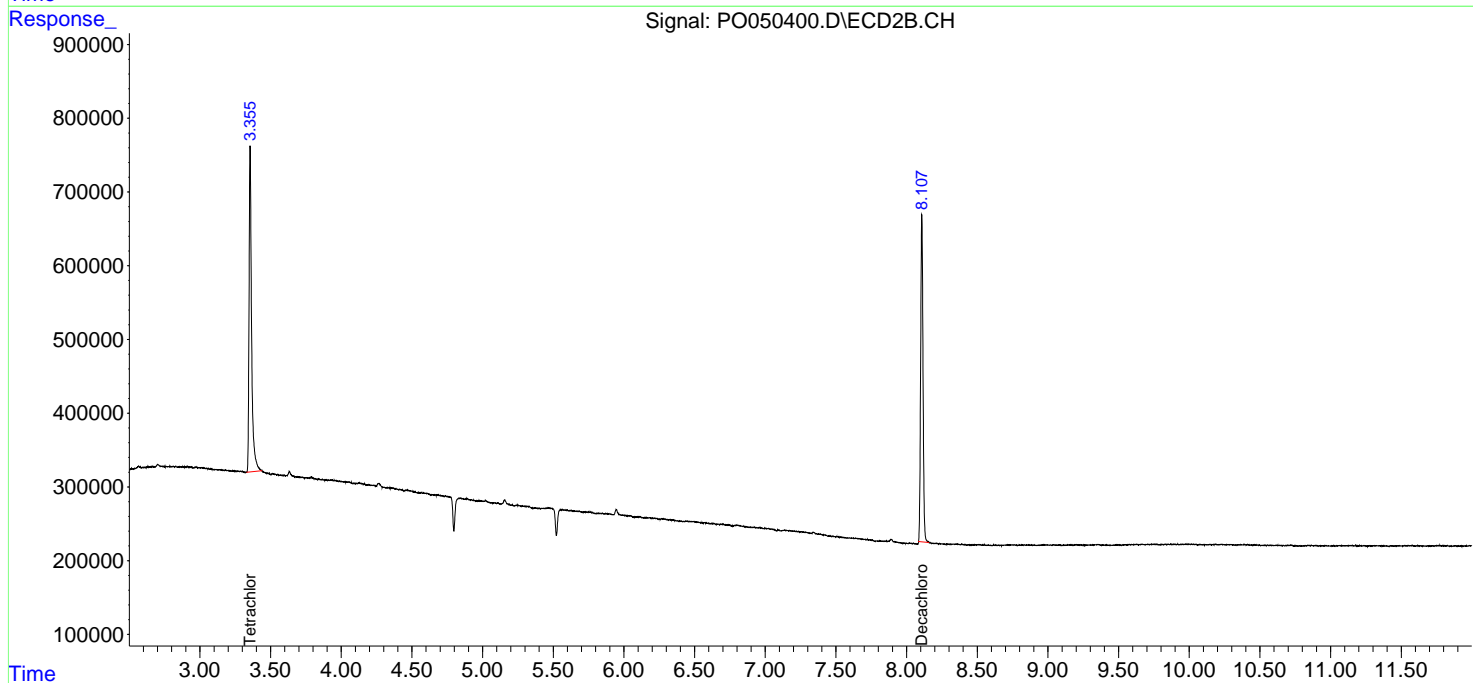
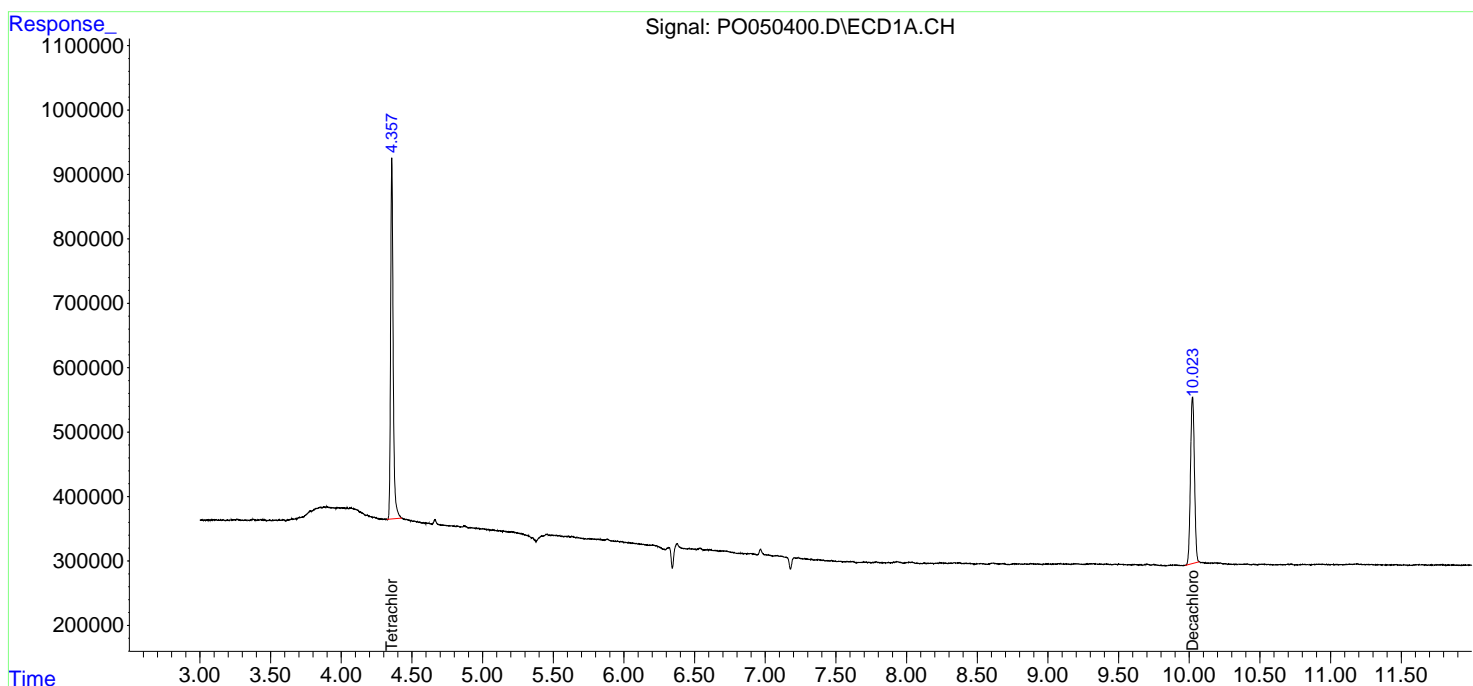
(f)=RT Delta > 1/2 Window (#)=Amounts differ by > 25% (m)=manual int.

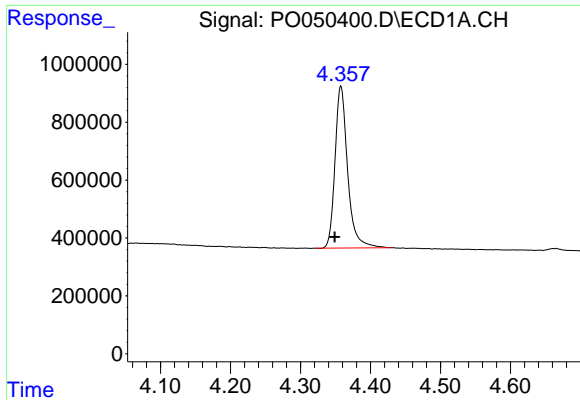
Data Path : Z:\pestpcbsrv\HPCHEM1\ECD_0\Data\PO102218\
 Data File : PO050400.D
 Signal(s) : Signal #1: ECD1A.CH Signal #2: ECD2B.CH
 Acq On : 22 Oct 2018 23:55
 Operator : SM/SJ
 Sample : I.BLK
 Misc :
 ALS Vial : 2 Sample Multiplier: 1

Instrument :
 ECD_O
 ClientSampleId :
 I.BLK

Integration File signal 1: autoint1.e
 Integration File signal 2: autoint2.e
 Quant Time: Oct 23 01:03:41 2018
 Quant Method : Z:\pestpcbsrv\HPCHEM1\ECD_0\methods\PO101818.M
 Quant Title : GC EXTRACTABLES
 QLast Update : Fri Oct 19 02:02:26 2018
 Response via : Initial Calibration
 Integrator: ChemStation 6890 Scale Mode: Small noise peaks clipped

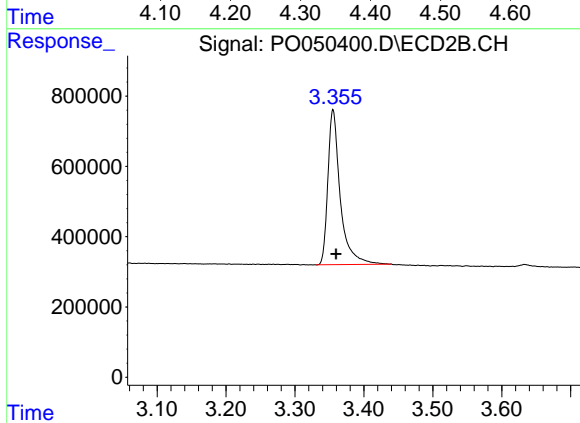
Volume Inj. : 2 µl
 Signal #1 Phase : ZB-MR1 Signal #2 Phase: ZB-MR2
 Signal #1 Info : 30Mx0.32mmx 0.50µ Signal #2 Info : 30M x 0.32mm x 0.25µm



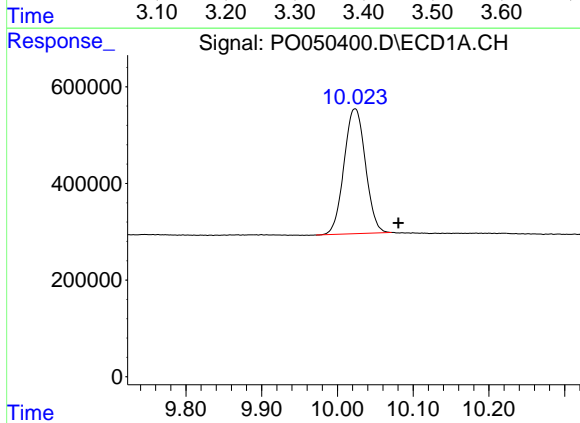


#1 Tetrachloro-m-xylene
 R.T.: 4.358 min
 Delta R.T.: 0.009 min
 Response: 7004948
 Conc: 23.48 ng/ml

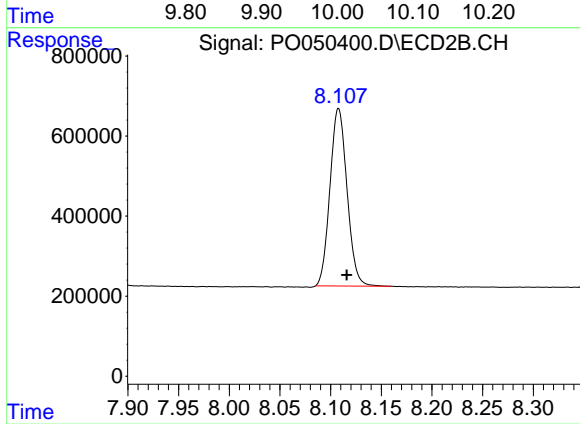
Instrument :
 ECD_O
 ClientSampleId :
 I.BLK



#1 Tetrachloro-m-xylene
 R.T.: 3.355 min
 Delta R.T.: -0.004 min
 Response: 5510770
 Conc: 28.03 ng/ml



#2 Decachlorobiphenyl
 R.T.: 10.023 min
 Delta R.T.: -0.057 min
 Response: 5068357
 Conc: 23.36 ng/ml m



#2 Decachlorobiphenyl
 R.T.: 8.108 min
 Delta R.T.: -0.008 min
 Response: 5198148
 Conc: 27.19 ng/ml