

Data Path : Z:\pestpcbsrv\HPCHEM1\ECD_0\Data\PO102218\
 Data File : PO050401.D
 Signal(s) : Signal #1: ECD1A.CH Signal #2: ECD2B.CH
 Acq On : 23 Oct 2018 00:14
 Operator : SM/SJ
 Sample : AR1660CCC500
 Misc :
 ALS Vial : 3 Sample Multiplier: 1

Instrument :
 ECD_0
 ClientSampleId :
 AR1660CCC500

Manual Integrations
 APPROVED

Sohil
 10/31/2018 8:54:39 AM

Integration File signal 1: autoint1.e
 Integration File signal 2: autoint2.e
 Quant Time: Oct 23 01:04:28 2018
 Quant Method : Z:\pestpcbsrv\HPCHEM1\ECD_0\methods\PO101818.M
 Quant Title : GC EXTRACTABLES
 QLast Update : Fri Oct 19 02:02:26 2018
 Response via : Initial Calibration
 Integrator: ChemStation 6890 Scale Mode: Small noise peaks clipped

Volume Inj. : 2 µl
 Signal #1 Phase : ZB-MR1 Signal #2 Phase: ZB-MR2
 Signal #1 Info : 30Mx0.32mmx 0.50µ Signal #2 Info : 30M x 0.32mm x 0.25µm

Compound	RT#1	RT#2	Resp#1	Resp#2	ng/ml	ng/ml

System Monitoring Compounds						
1) SA Tetrachlo...	4.358	3.355	16209271	12539293	54.322	63.780
2) SA Decachlor...	10.021	8.108	11827737	11797224	54.509m	61.719
Target Compounds						
3) L1 AR-1016-1	5.522	4.374	6231029	4649828	528.197	601.624
4) L1 AR-1016-2	5.545	4.390	9511532	7872406	537.655	583.689
5) L1 AR-1016-3	5.607	4.555	5764765	3797472	537.850	578.212
6) L1 AR-1016-4	5.705	4.597	4654559	3085365	526.542	582.447
7) L1 AR-1016-5	5.998	4.796	4811244	3638044	563.937	525.324
31) L7 AR-1260-1	7.119	5.781	9365790	8729149	549.877	576.192m
32) L7 AR-1260-2	7.374	5.964	10183763	11034559	514.972m	596.501m
33) L7 AR-1260-3	7.733	6.110	7504125	10034656	524.239	586.304
34) L7 AR-1260-4	7.959	6.566	8325888	7924379	514.193	584.497
35) L7 AR-1260-5	8.271	6.804	15755787	18275779	518.615m	598.067m

(f)=RT Delta > 1/2 Window (#)=Amounts differ by > 25% (m)=manual int.

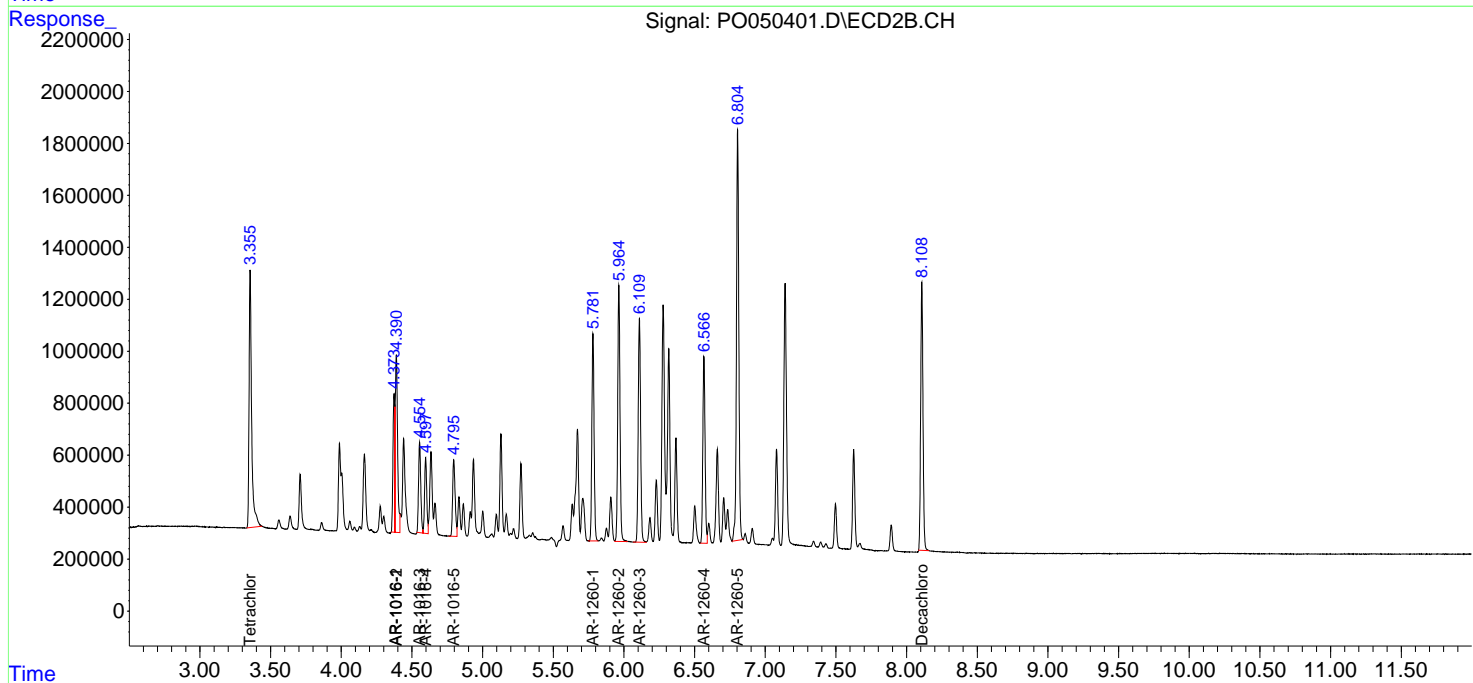
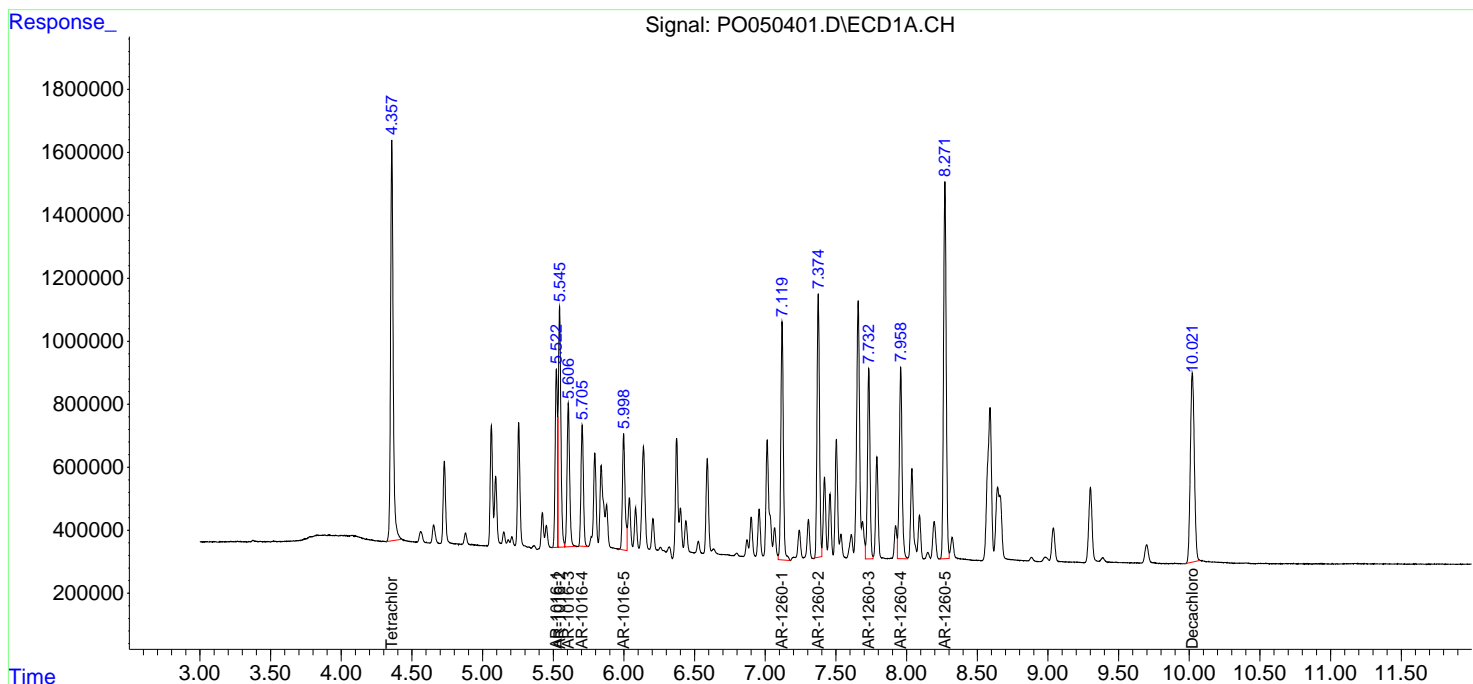
Data Path : Z:\pestpcbsrv\HPCHEM1\ECD_O\Data\PO102218\
 Data File : PO050401.D
 Signal(s) : Signal #1: ECD1A.CH Signal #2: ECD2B.CH
 Acq On : 23 Oct 2018 00:14
 Operator : SM/SJ
 Sample : AR1660CCC500
 Misc :
 ALS Vial : 3 Sample Multiplier: 1

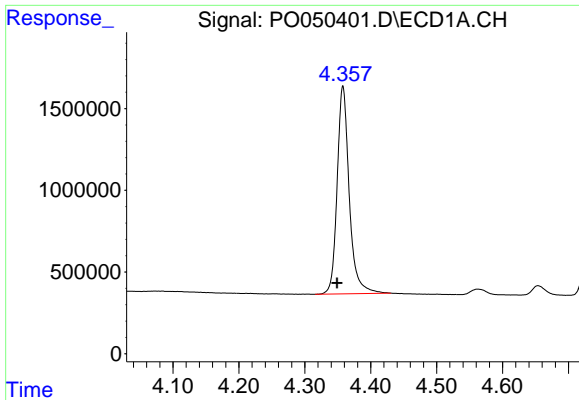
Instrument :
 ECD_O
Client Sampled :
 AR1660CCC500

Manual Integrations
APPROVED
 Sohil
 10/31/2018 8:54:39 AM

Integration File signal 1: autoint1.e
 Integration File signal 2: autoint2.e
 Quant Time: Oct 23 01:04:28 2018
 Quant Method : Z:\pestpcbsrv\HPCHEM1\ECD_O\methods\PO101818.M
 Quant Title : GC EXTRACTABLES
 QLast Update : Fri Oct 19 02:02:26 2018
 Response via : Initial Calibration
 Integrator: ChemStation 6890 Scale Mode: Small noise peaks clipped

Volume Inj. : 2 µl
 Signal #1 Phase : ZB-MR1 Signal #2 Phase: ZB-MR2
 Signal #1 Info : 30Mx0.32mmx 0.50µ Signal #2 Info : 30M x 0.32mm x 0.25µm

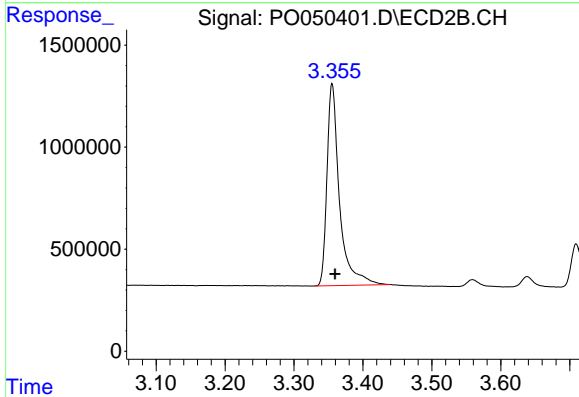




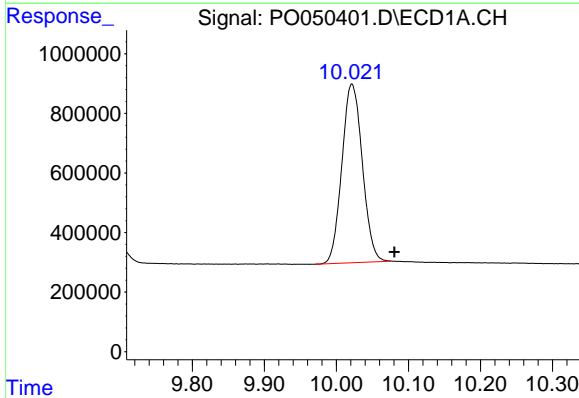
#1 Tetrachloro-m-xylene
 R.T.: 4.358 min
 Delta R.T.: 0.009 min
 Response: 16209271
 Conc: 54.32 ng/ml

Instrument :
 ECD_O
 ClientSampled :
 AR1660CCC500

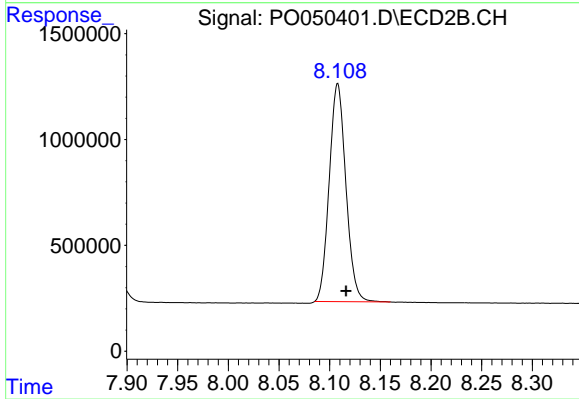
Manual Integrations
 APPROVED
 Sohil
 10/31/2018 8:54:39 AM



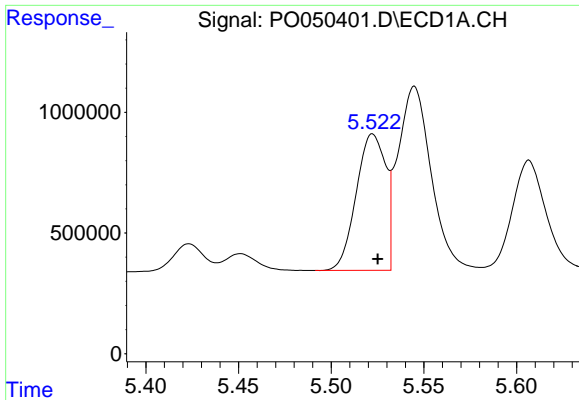
#1 Tetrachloro-m-xylene
 R.T.: 3.355 min
 Delta R.T.: -0.004 min
 Response: 12539293
 Conc: 63.78 ng/ml



#2 Decachlorobiphenyl
 R.T.: 10.021 min
 Delta R.T.: -0.059 min
 Response: 11827737
 Conc: 54.51 ng/ml m



#2 Decachlorobiphenyl
 R.T.: 8.108 min
 Delta R.T.: -0.008 min
 Response: 11797224
 Conc: 61.72 ng/ml

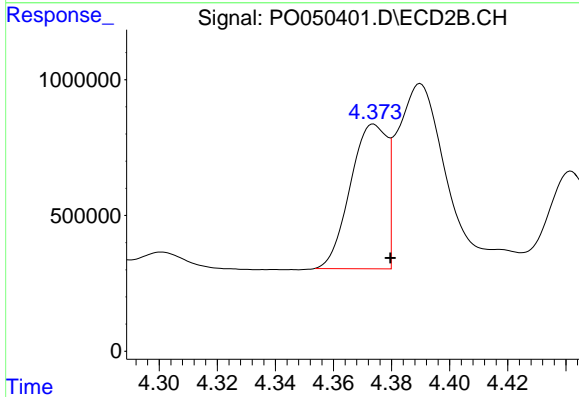


#3 AR-1016-1

R.T.: 5.522 min
 Delta R.T.: -0.003 min
 Response: 6231029
 Conc: 528.20 ng/ml

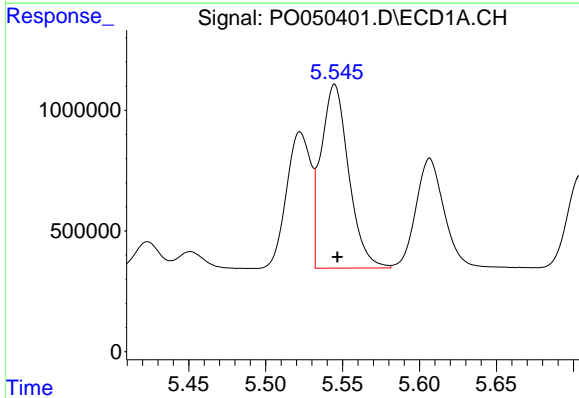
Instrument :
 ECD_O
ClientSampled :
 AR1660CCC500

Manual Integrations
APPROVED
 Sohil
 10/31/2018 8:54:39 AM



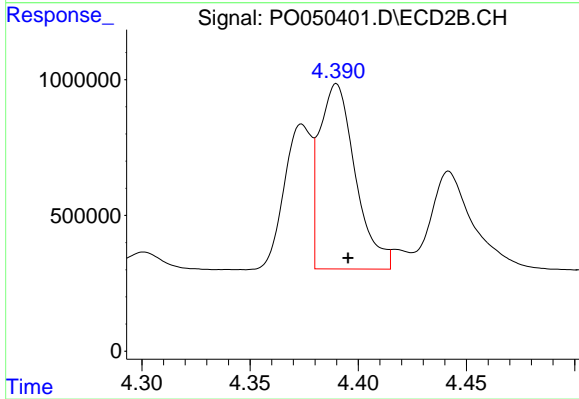
#3 AR-1016-1

R.T.: 4.374 min
 Delta R.T.: -0.006 min
 Response: 4649828
 Conc: 601.62 ng/ml



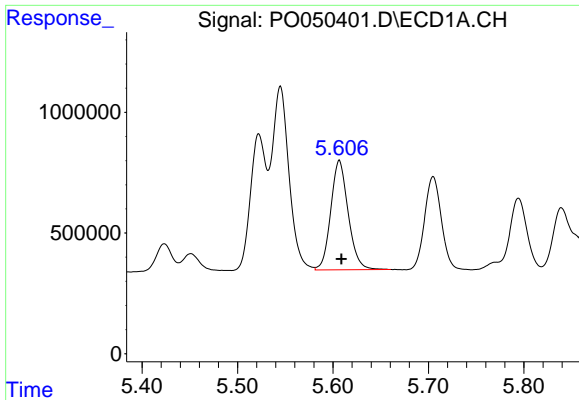
#4 AR-1016-2

R.T.: 5.545 min
 Delta R.T.: -0.002 min
 Response: 9511532
 Conc: 537.66 ng/ml



#4 AR-1016-2

R.T.: 4.390 min
 Delta R.T.: -0.005 min
 Response: 7872406
 Conc: 583.69 ng/ml

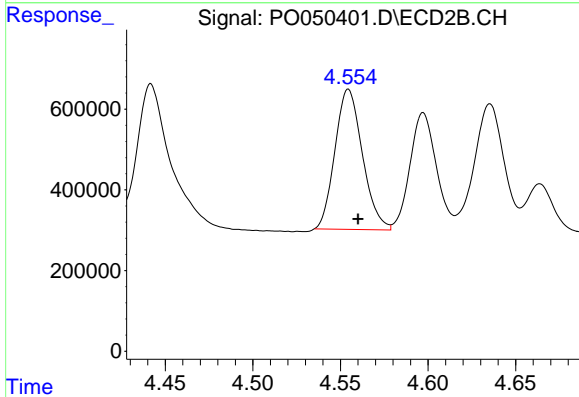


#5 AR-1016-3

R.T.: 5.607 min
 Delta R.T.: -0.002 min
 Response: 5764765
 Conc: 537.85 ng/ml

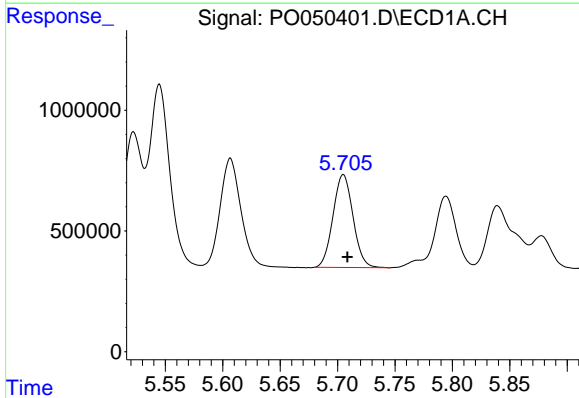
Instrument :
 ECD_O
ClientSampled :
 AR1660CCC500

Manual Integrations
APPROVED
 Sohil
 10/31/2018 8:54:39 AM



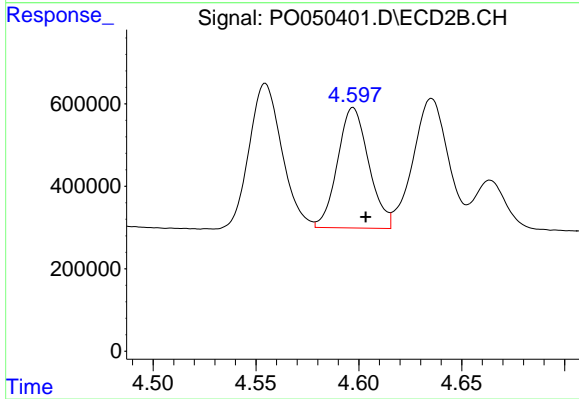
#5 AR-1016-3

R.T.: 4.555 min
 Delta R.T.: -0.005 min
 Response: 3797472
 Conc: 578.21 ng/ml



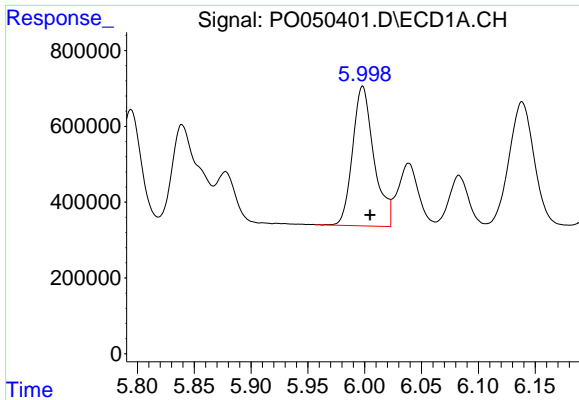
#6 AR-1016-4

R.T.: 5.705 min
 Delta R.T.: -0.003 min
 Response: 4654559
 Conc: 526.54 ng/ml



#6 AR-1016-4

R.T.: 4.597 min
 Delta R.T.: -0.006 min
 Response: 3085365
 Conc: 582.45 ng/ml

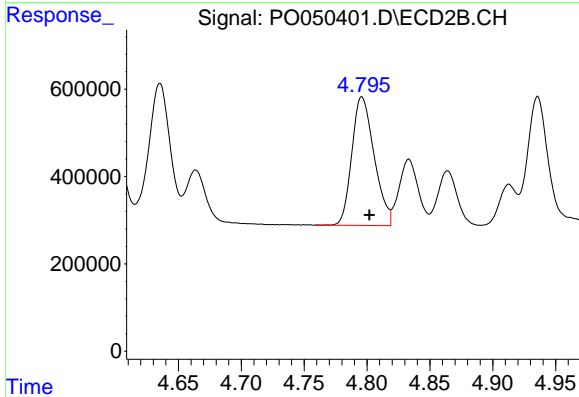


#7 AR-1016-5

R.T.: 5.998 min
 Delta R.T.: -0.006 min
 Response: 4811244
 Conc: 563.94 ng/ml

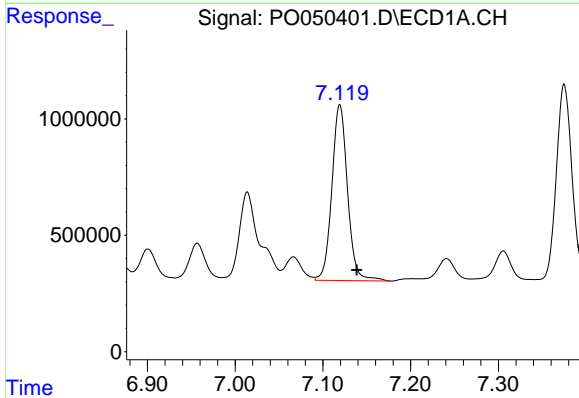
Instrument :
 ECD_O
ClientSampled :
 AR1660CCC500

Manual Integrations
APPROVED
 Sohil
 10/31/2018 8:54:39 AM



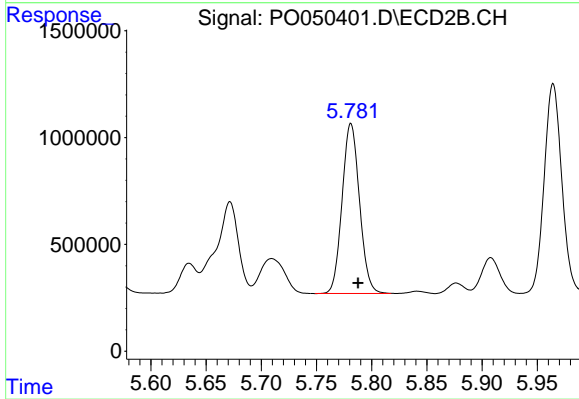
#7 AR-1016-5

R.T.: 4.796 min
 Delta R.T.: -0.006 min
 Response: 3638044
 Conc: 525.32 ng/ml



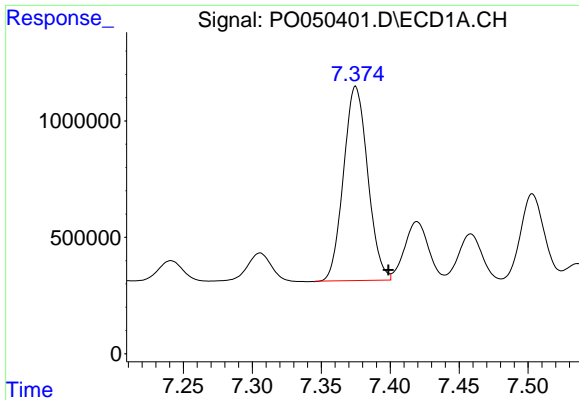
#31 AR-1260-1

R.T.: 7.119 min
 Delta R.T.: -0.019 min
 Response: 9365790
 Conc: 549.88 ng/ml



#31 AR-1260-1

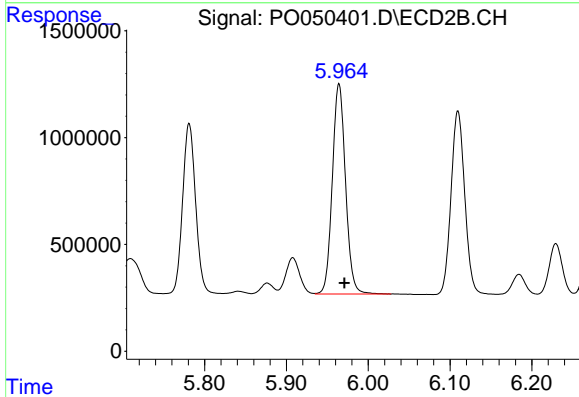
R.T.: 5.781 min
 Delta R.T.: -0.007 min
 Response: 8729149
 Conc: 576.19 ng/ml m



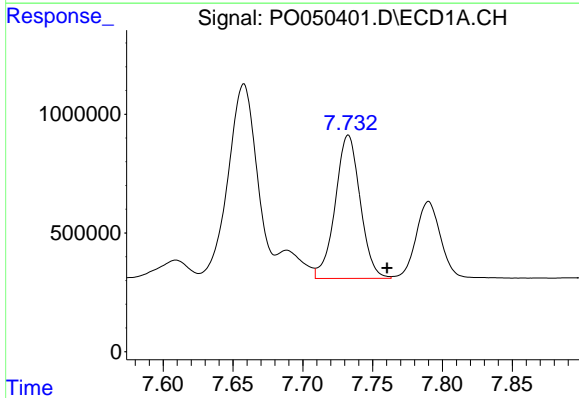
#32 AR-1260-2
 R.T.: 7.374 min
 Delta R.T.: -0.024 min
 Response: 10183763
 Conc: 514.97 ng/ml m

Instrument :
 ECD_O
ClientSampled :
 AR1660CCC500

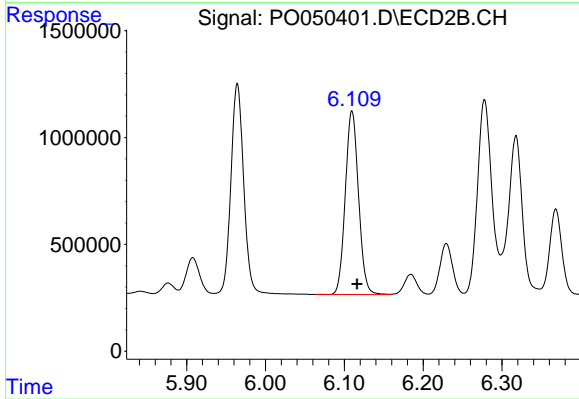
Manual Integrations
APPROVED
 Sohil
 10/31/2018 8:54:39 AM



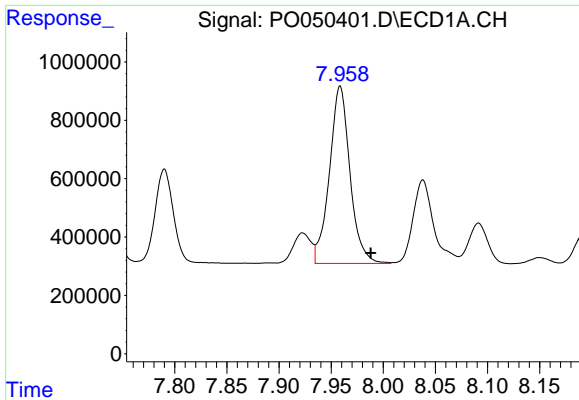
#32 AR-1260-2
 R.T.: 5.964 min
 Delta R.T.: -0.007 min
 Response: 11034559
 Conc: 596.50 ng/ml m



#33 AR-1260-3
 R.T.: 7.733 min
 Delta R.T.: -0.028 min
 Response: 7504125
 Conc: 524.24 ng/ml



#33 AR-1260-3
 R.T.: 6.110 min
 Delta R.T.: -0.007 min
 Response: 10034656
 Conc: 586.30 ng/ml



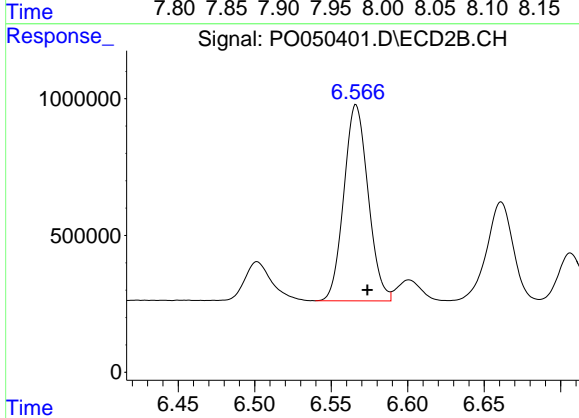
#34 AR-1260-4

R.T.: 7.959 min
 Delta R.T.: -0.029 min
 Response: 8325888
 Conc: 514.19 ng/ml

Instrument :
 ECD_O
 ClientSampled :
 AR1660CCC500

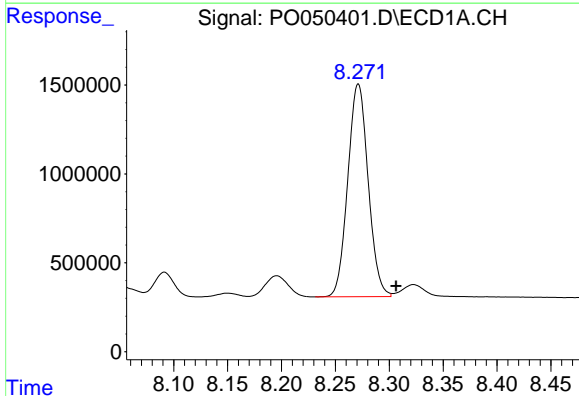
Manual Integrations
 APPROVED

Sohil
 10/31/2018 8:54:39 AM



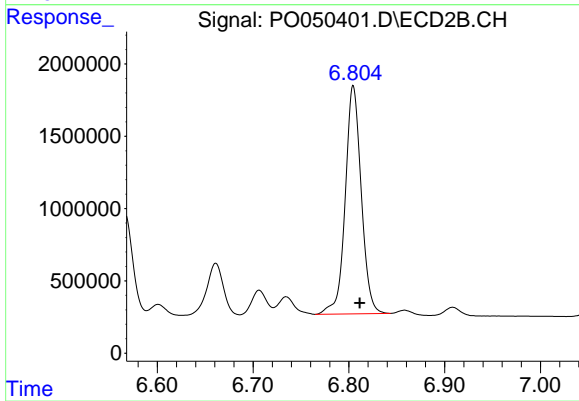
#34 AR-1260-4

R.T.: 6.566 min
 Delta R.T.: -0.007 min
 Response: 7924379
 Conc: 584.50 ng/ml



#35 AR-1260-5

R.T.: 8.271 min
 Delta R.T.: -0.035 min
 Response: 15755787
 Conc: 518.62 ng/ml m



#35 AR-1260-5

R.T.: 6.804 min
 Delta R.T.: -0.007 min
 Response: 18275779
 Conc: 598.07 ng/ml m