

Data Path : Z:\pestpcbsrv\HPCHEM1\ECD_O\Data\PO102422\
 Data File : PO089862.D
 Signal(s) : Signal #1: ECD1A.ch Signal #2: ECD2B.ch
 Acq On : 24 Oct 2022 19:57
 Operator : YP/AJ
 Sample : AR1660ICC500
 Misc :
 ALS Vial : 5 Sample Multiplier: 1

Instrument :
 ECD_O
 ClientSampleId :
 AR1660ICC500

Integration File signal 1: autoint1.e
 Integration File signal 2: autoint2.e
 Quant Time: Oct 24 22:05:10 2022
 Quant Method : Z:\pestpcbsrv\HPCHEM1\ECD_O\methods\PO102422.M
 Quant Title : GC EXTRACTABLES
 QLast Update : Mon Oct 24 22:04:30 2022
 Response via : Initial Calibration
 Integrator: ChemStation

Volume Inj. : 2 µl
 Signal #1 Phase : ZB-MR1 Signal #2 Phase: ZB-MR2
 Signal #1 Info : 30Mx0.32mmx 0.50µ Signal #2 Info : 30M x 0.32mm x 0.25µm

Compound	RT#1	RT#2	Resp#1	Resp#2	ng/ml	ng/ml

System Monitoring Compounds						
1) SA Tetrachlo...	4.307	3.487	165.0E6	52168994	50.000	50.000
2) SA Decachlor...	10.054	8.498	123.3E6	46031307	50.000	50.000
Target Compounds						
3) L1 AR-1016-1	5.482	4.575	52785423	18188940	500.000	500.000
4) L1 AR-1016-2	5.504	4.594	76691375	25508058	500.000	500.000
5) L1 AR-1016-3	5.567	4.769	47770753	13977537	500.000	500.000
6) L1 AR-1016-4	5.665	4.812	38174758	11797499	500.000	500.000
7) L1 AR-1016-5	5.963	5.026	38727312	15019900	500.000	500.000
31) L7 AR-1260-1	7.095	6.065	69043649	28009570	500.000	500.000
32) L7 AR-1260-2	7.354	6.254	79314718	32486890	500.000	500.000
33) L7 AR-1260-3	7.716	6.408	55429203	30595502	500.000	500.000
34) L7 AR-1260-4	7.942	6.882	63720968	24323211	500.000	500.000
35) L7 AR-1260-5	8.258	7.126	119.2E6	54347130	500.000	500.000

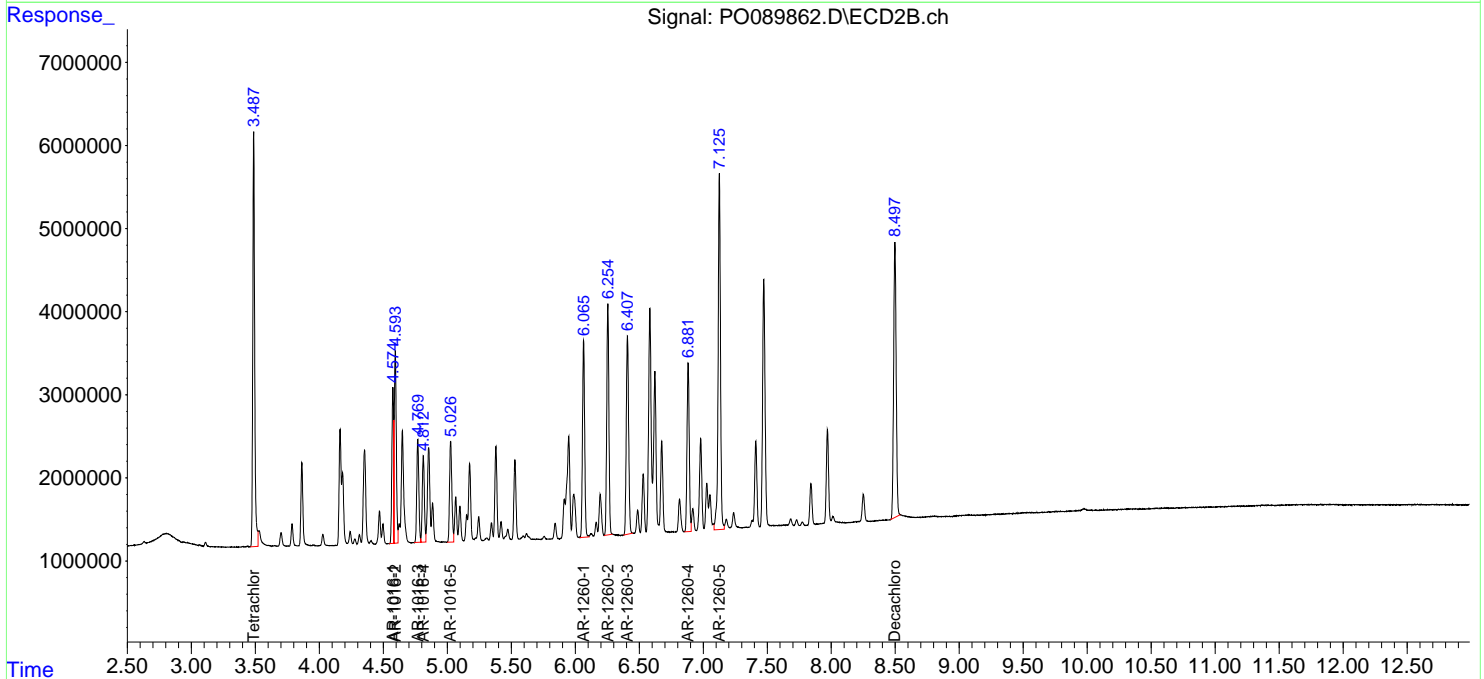
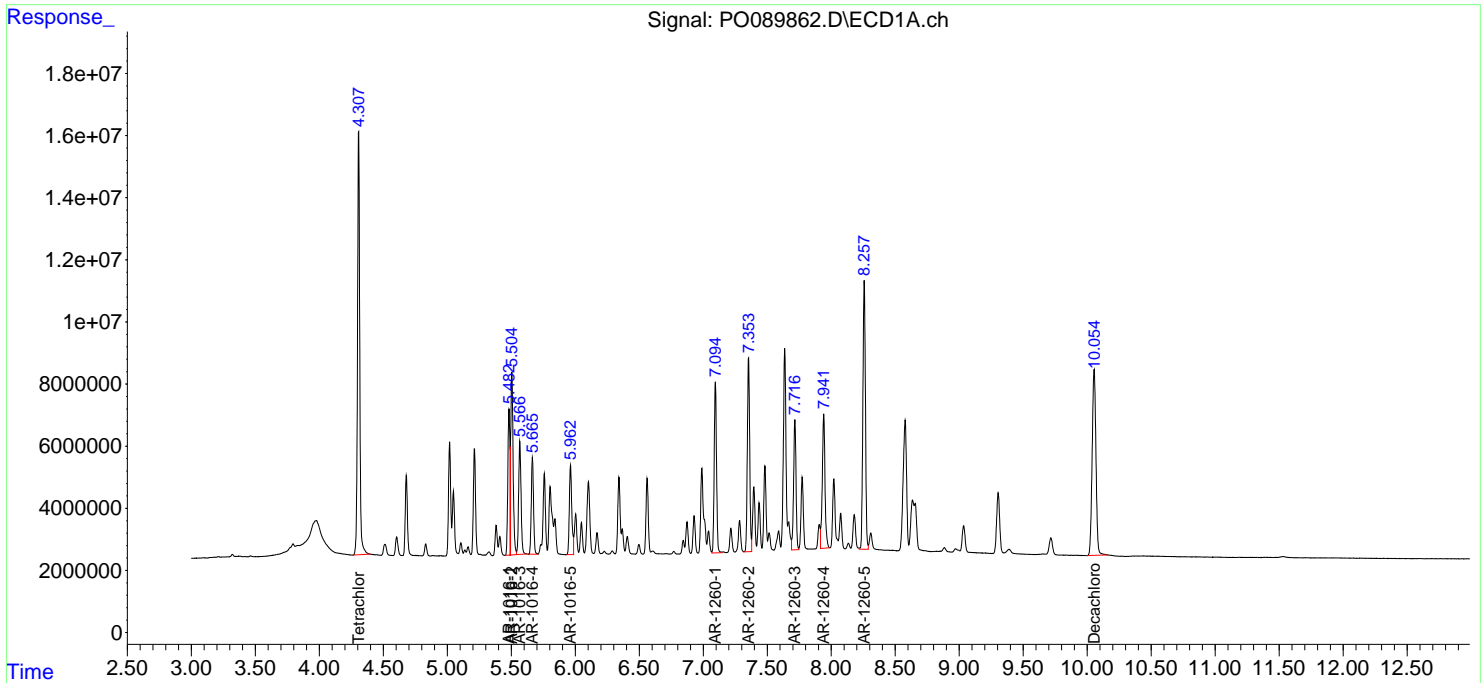
(f)=RT Delta > 1/2 Window (#)=Amounts differ by > 25% (m)=manual int.

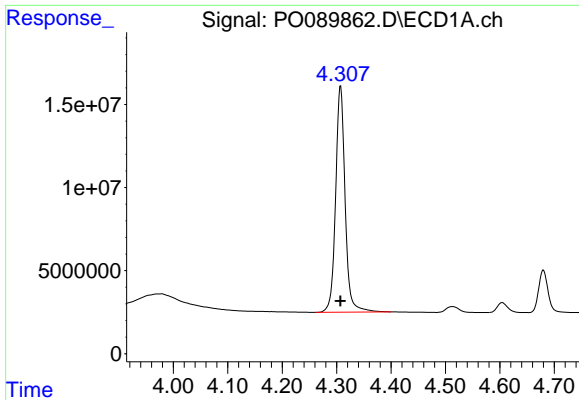
Data Path : Z:\pestpcbsrv\HPCHEM1\ECD_O\Data\PO102422\
 Data File : PO089862.D
 Signal(s) : Signal #1: ECD1A.ch Signal #2: ECD2B.ch
 Acq On : 24 Oct 2022 19:57
 Operator : YP/AJ
 Sample : AR1660ICC500
 Misc :
 ALS Vial : 5 Sample Multiplier: 1

Instrument :
 ECD_O
 ClientSampleId :
 AR1660ICC500

Integration File signal 1: autoint1.e
 Integration File signal 2: autoint2.e
 Quant Time: Oct 24 22:05:10 2022
 Quant Method : Z:\pestpcbsrv\HPCHEM1\ECD_O\methods\PO102422.M
 Quant Title : GC EXTRACTABLES
 QLast Update : Mon Oct 24 22:04:30 2022
 Response via : Initial Calibration
 Integrator: ChemStation

Volume Inj. : 2 µl
 Signal #1 Phase : ZB-MR1 Signal #2 Phase: ZB-MR2
 Signal #1 Info : 30Mx0.32mmx 0.50µ Signal #2 Info : 30M x 0.32mm x 0.25µm

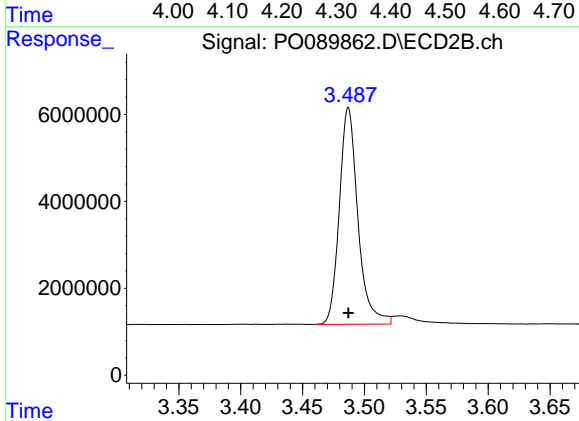




#1 Tetrachloro-m-xylene

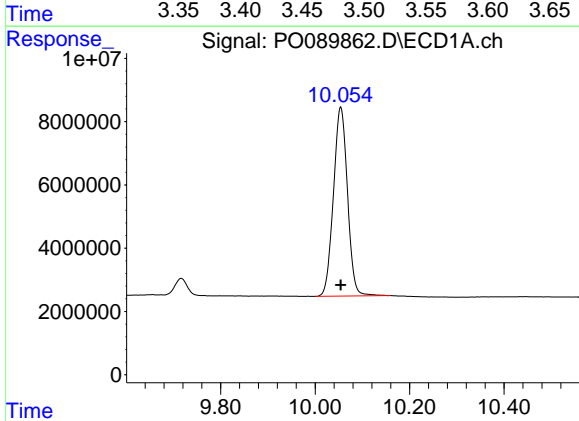
R.T.: 4.307 min
 Delta R.T.: 0.000 min
 Response: 165037419
 Conc: 50.00 ng/ml

Instrument :
 ECD_O
 ClientSampleId :
 AR1660ICC500



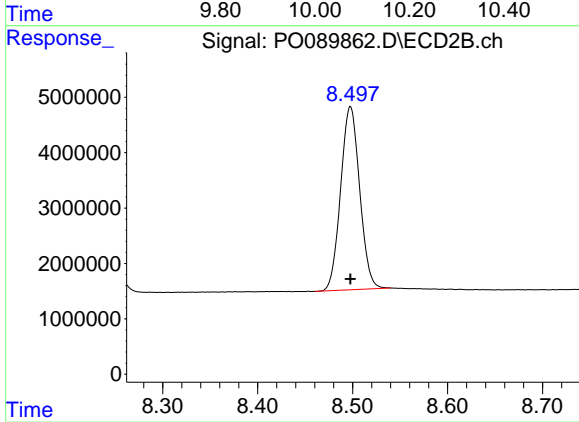
#1 Tetrachloro-m-xylene

R.T.: 3.487 min
 Delta R.T.: 0.000 min
 Response: 52168994
 Conc: 50.00 ng/ml



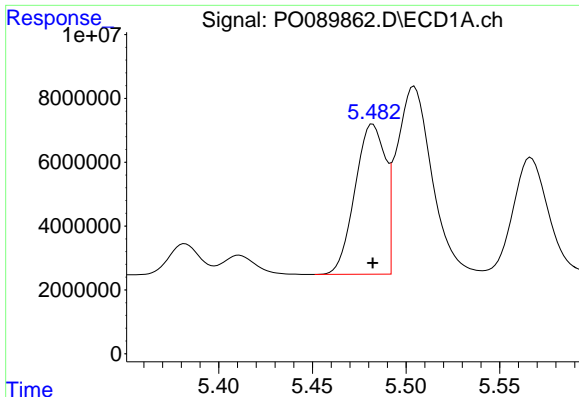
#2 Decachlorobiphenyl

R.T.: 10.054 min
 Delta R.T.: 0.000 min
 Response: 123277019
 Conc: 50.00 ng/ml



#2 Decachlorobiphenyl

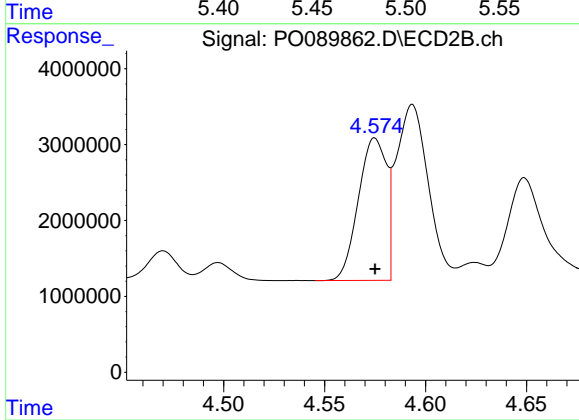
R.T.: 8.498 min
 Delta R.T.: 0.000 min
 Response: 46031307
 Conc: 50.00 ng/ml



#3 AR-1016-1

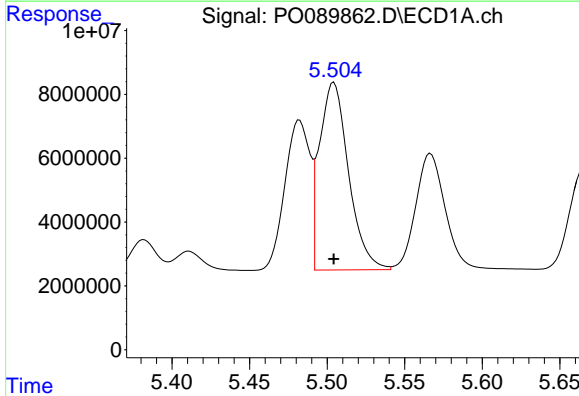
R.T.: 5.482 min
 Delta R.T.: 0.000 min
 Response: 52785423
 Conc: 500.00 ng/ml

Instrument :
 ECD_O
 ClientSampleId :
 AR1660ICC500



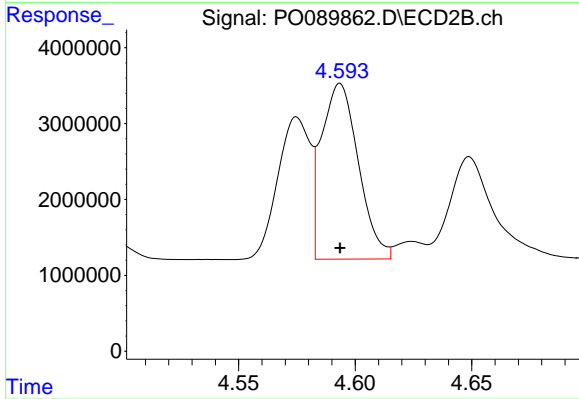
#3 AR-1016-1

R.T.: 4.575 min
 Delta R.T.: 0.000 min
 Response: 18188940
 Conc: 500.00 ng/ml



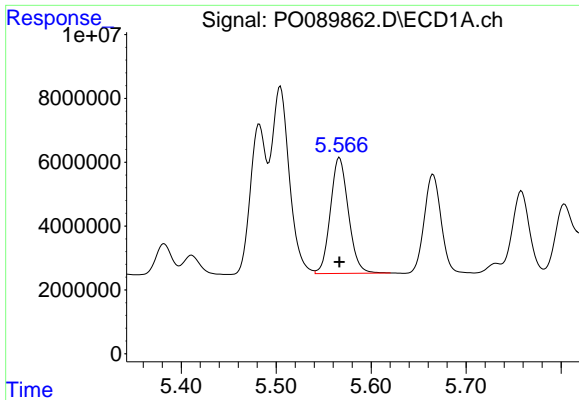
#4 AR-1016-2

R.T.: 5.504 min
 Delta R.T.: 0.000 min
 Response: 76691375
 Conc: 500.00 ng/ml



#4 AR-1016-2

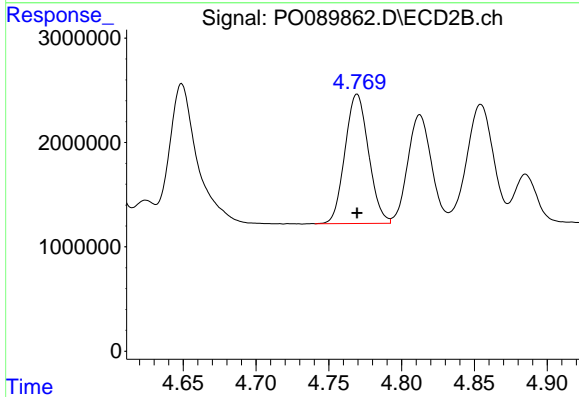
R.T.: 4.594 min
 Delta R.T.: 0.000 min
 Response: 25508058
 Conc: 500.00 ng/ml



#5 AR-1016-3

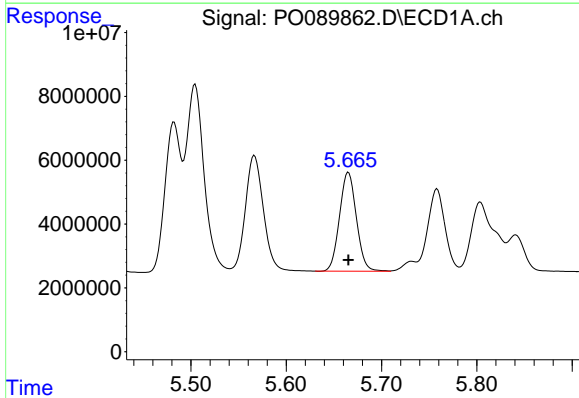
R.T.: 5.567 min
 Delta R.T.: 0.000 min
 Response: 47770753
 Conc: 500.00 ng/ml

Instrument :
 ECD_O
 ClientSampleId :
 AR1660ICC500



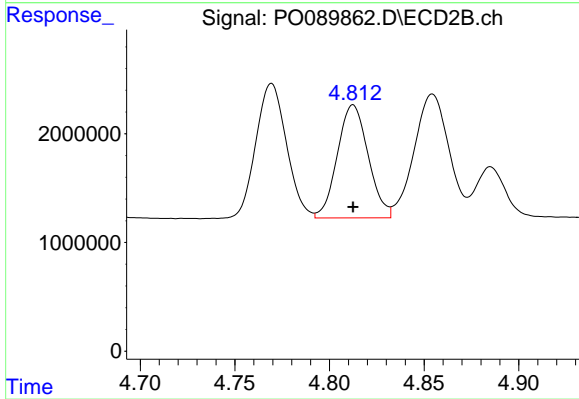
#5 AR-1016-3

R.T.: 4.769 min
 Delta R.T.: 0.000 min
 Response: 13977537
 Conc: 500.00 ng/ml



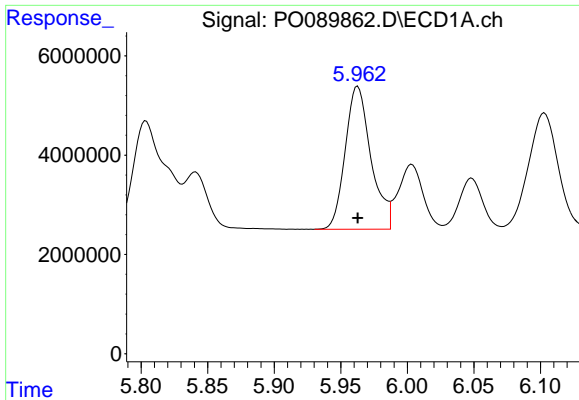
#6 AR-1016-4

R.T.: 5.665 min
 Delta R.T.: 0.000 min
 Response: 38174758
 Conc: 500.00 ng/ml



#6 AR-1016-4

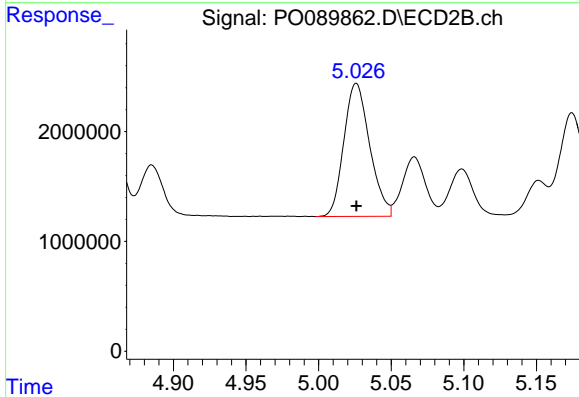
R.T.: 4.812 min
 Delta R.T.: 0.000 min
 Response: 11797499
 Conc: 500.00 ng/ml



#7 AR-1016-5

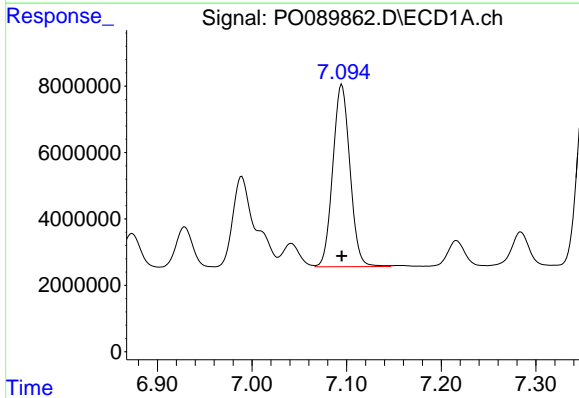
R.T.: 5.963 min
Delta R.T.: 0.000 min
Response: 38727312
Conc: 500.00 ng/ml

Instrument :
ECD_O
ClientSampleId :
AR1660ICC500



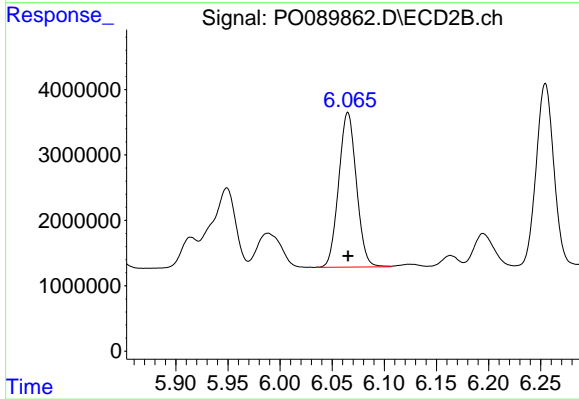
#7 AR-1016-5

R.T.: 5.026 min
Delta R.T.: 0.000 min
Response: 15019900
Conc: 500.00 ng/ml



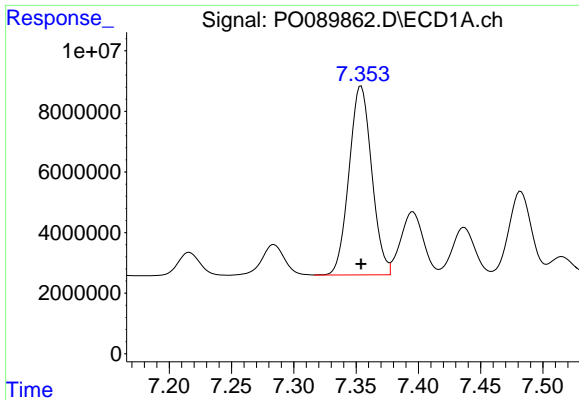
#31 AR-1260-1

R.T.: 7.095 min
Delta R.T.: 0.000 min
Response: 69043649
Conc: 500.00 ng/ml



#31 AR-1260-1

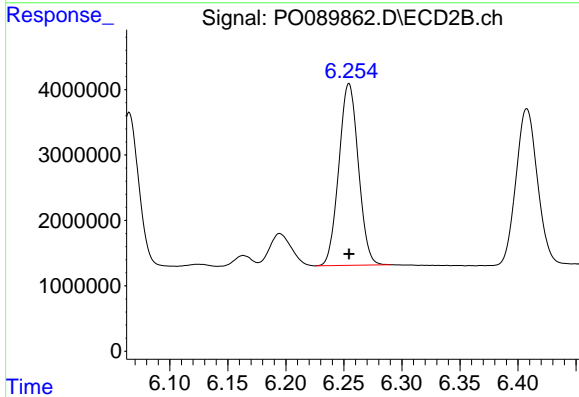
R.T.: 6.065 min
Delta R.T.: 0.000 min
Response: 28009570
Conc: 500.00 ng/ml



#32 AR-1260-2

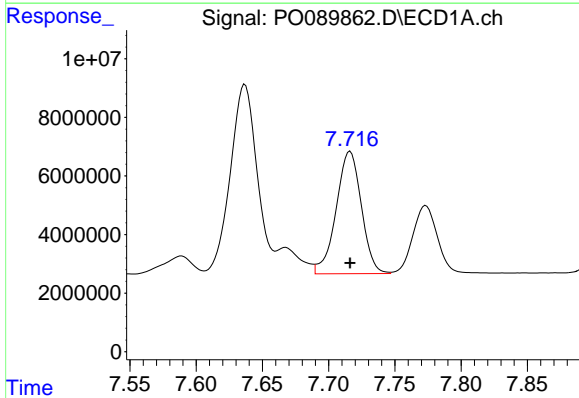
R.T.: 7.354 min
 Delta R.T.: 0.000 min
 Response: 79314718
 Conc: 500.00 ng/ml

Instrument :
 ECD_O
 ClientSampleId :
 AR1660ICC500



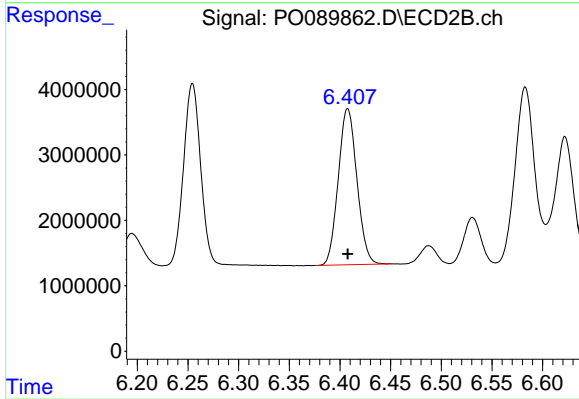
#32 AR-1260-2

R.T.: 6.254 min
 Delta R.T.: 0.000 min
 Response: 32486890
 Conc: 500.00 ng/ml



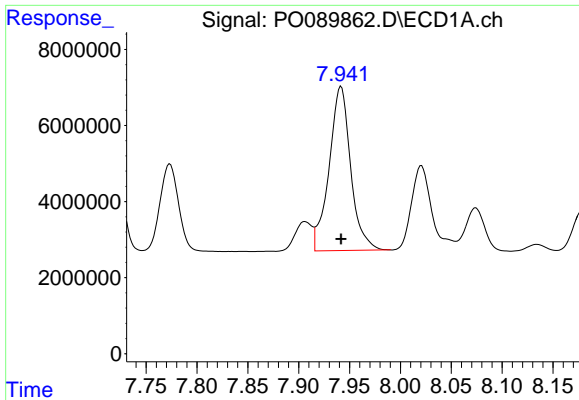
#33 AR-1260-3

R.T.: 7.716 min
 Delta R.T.: 0.000 min
 Response: 55429203
 Conc: 500.00 ng/ml



#33 AR-1260-3

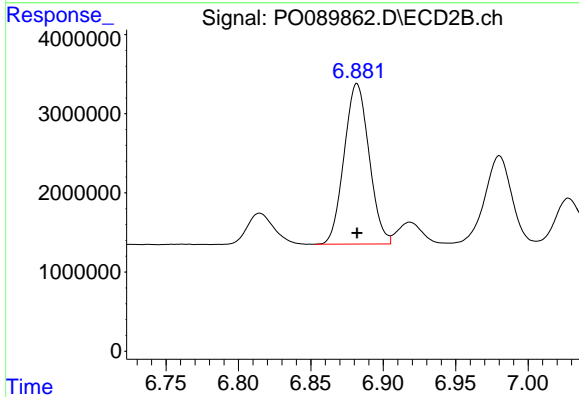
R.T.: 6.408 min
 Delta R.T.: 0.000 min
 Response: 30595502
 Conc: 500.00 ng/ml



#34 AR-1260-4

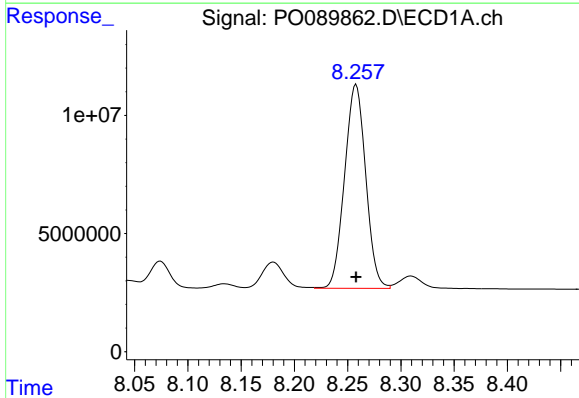
R.T.: 7.942 min
 Delta R.T.: 0.000 min
 Response: 63720968
 Conc: 500.00 ng/ml

Instrument :
 ECD_O
 ClientSampleId :
 AR1660ICC500



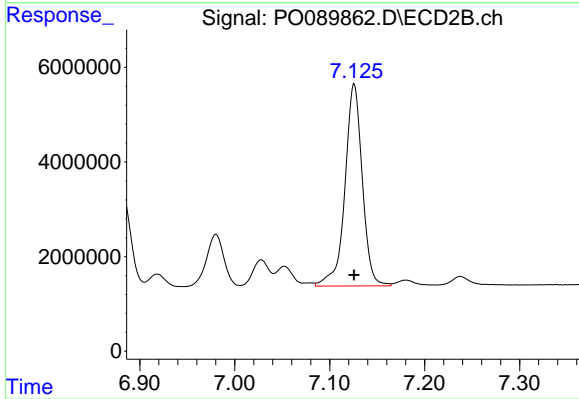
#34 AR-1260-4

R.T.: 6.882 min
 Delta R.T.: 0.000 min
 Response: 24323211
 Conc: 500.00 ng/ml



#35 AR-1260-5

R.T.: 8.258 min
 Delta R.T.: 0.000 min
 Response: 119165493
 Conc: 500.00 ng/ml



#35 AR-1260-5

R.T.: 7.126 min
 Delta R.T.: 0.000 min
 Response: 54347130
 Conc: 500.00 ng/ml