

Data Path : Z:\pestpcbsrv\HPCHEM1\ECD\_0\Data\PO102422\  
 Data File : PO089896.D  
 Signal(s) : Signal #1: ECD1A.ch Signal #2: ECD2B.ch  
 Acq On : 25 Oct 2022 05:37  
 Operator : YP/AJ  
 Sample : I.BLK  
 Misc :  
 ALS Vial : 2 Sample Multiplier: 1

Instrument :  
 ECD\_0  
 ClientSampleId :  
 I.BLK

Integration File signal 1: autoint1.e  
 Integration File signal 2: autoint2.e  
 Quant Time: Oct 25 05:53:36 2022  
 Quant Method : Z:\pestpcbsrv\HPCHEM1\ECD\_0\methods\PO102422.M  
 Quant Title : GC EXTRACTABLES  
 QLast Update : Tue Oct 25 02:35:13 2022  
 Response via : Initial Calibration  
 Integrator: ChemStation

Volume Inj. : 2 µl  
 Signal #1 Phase : ZB-MR1 Signal #2 Phase: ZB-MR2  
 Signal #1 Info : 30Mx0.32mmx 0.50µ Signal #2 Info : 30M x 0.32mm x 0.25µm

Compound	RT#1	RT#2	Resp#1	Resp#2	ng/ml	ng/ml
-----						
System Monitoring Compounds						
1) SA Tetrachlo...	4.306	3.486	66126638	22239735	20.780	22.222
2) SA Decachlor...	10.051	8.495	55318225	21227904	23.113	23.363

Target Compounds

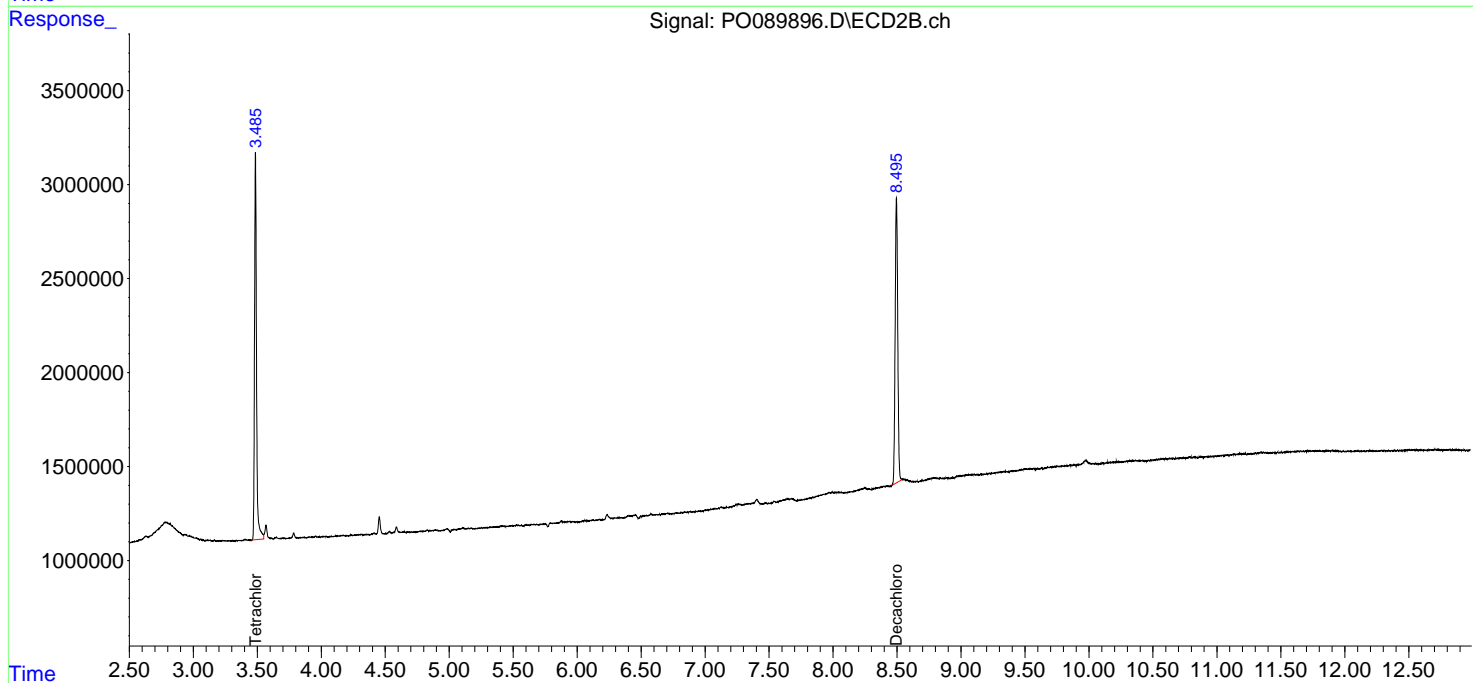
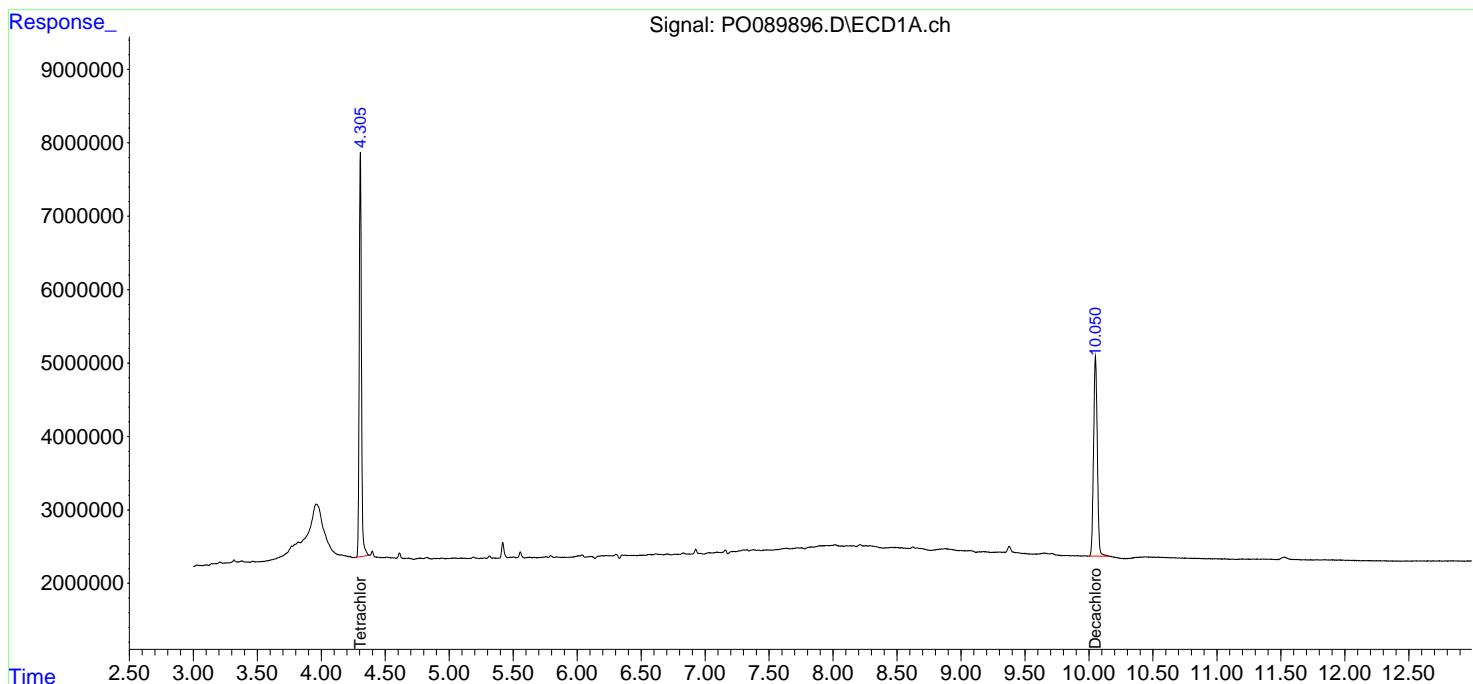
(f)=RT Delta > 1/2 Window (#)=Amounts differ by > 25% (m)=manual int.

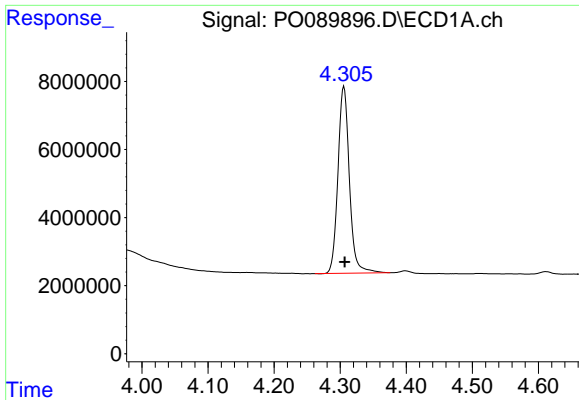
Data Path : Z:\pestpcbsrv\HPCHEM1\ECD\_O\Data\PO102422\  
 Data File : PO089896.D  
 Signal(s) : Signal #1: ECD1A.ch Signal #2: ECD2B.ch  
 Acq On : 25 Oct 2022 05:37  
 Operator : YP/AJ  
 Sample : I.BLK  
 Misc :  
 ALS Vial : 2 Sample Multiplier: 1

Instrument :  
 ECD\_O  
 ClientSampleId :  
 I.BLK

Integration File signal 1: autoint1.e  
 Integration File signal 2: autoint2.e  
 Quant Time: Oct 25 05:53:36 2022  
 Quant Method : Z:\pestpcbsrv\HPCHEM1\ECD\_O\methods\PO102422.M  
 Quant Title : GC EXTRACTABLES  
 QLast Update : Tue Oct 25 02:35:13 2022  
 Response via : Initial Calibration  
 Integrator: ChemStation

Volume Inj. : 2 µl  
 Signal #1 Phase : ZB-MR1 Signal #2 Phase: ZB-MR2  
 Signal #1 Info : 30Mx0.32mmx 0.50µ Signal #2 Info : 30M x 0.32mm x 0.25µm

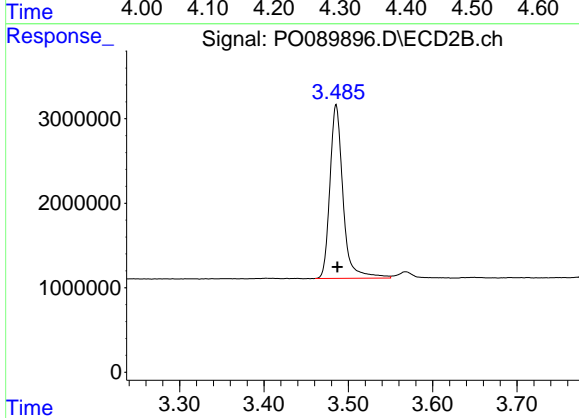




#1 Tetrachloro-m-xylene

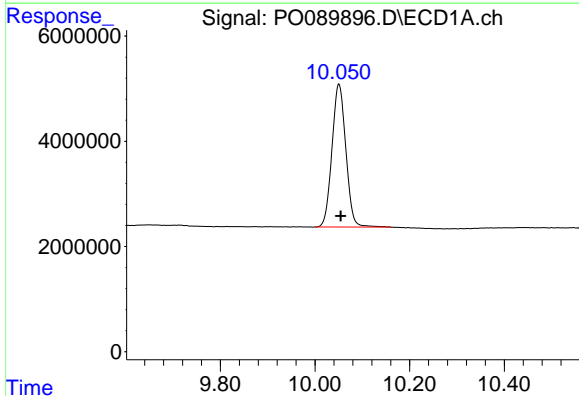
R.T.: 4.306 min  
 Delta R.T.: -0.001 min  
 Response: 66126638  
 Conc: 20.78 ng/ml

Instrument :  
 ECD\_O  
 ClientSampleId :  
 I.BLK



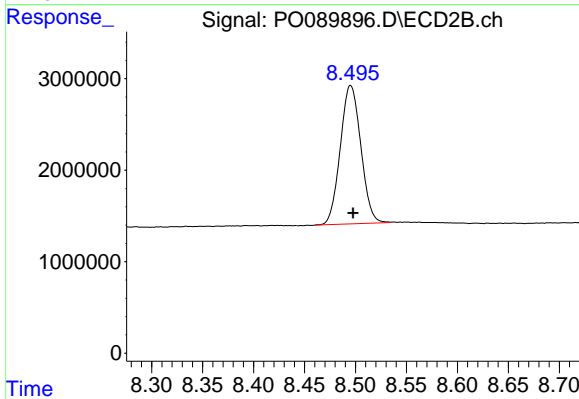
#1 Tetrachloro-m-xylene

R.T.: 3.486 min  
 Delta R.T.: -0.001 min  
 Response: 22239735  
 Conc: 22.22 ng/ml



#2 Decachlorobiphenyl

R.T.: 10.051 min  
 Delta R.T.: -0.004 min  
 Response: 55318225  
 Conc: 23.11 ng/ml



#2 Decachlorobiphenyl

R.T.: 8.495 min  
 Delta R.T.: -0.003 min  
 Response: 21227904  
 Conc: 23.36 ng/ml