

Data Path : Z:\pestpcbsrv\HPCHEM1\ECD\_0\Data\PO102523\  
 Data File : PO098910.D  
 Signal(s) : Signal #1: ECD1A.ch Signal #2: ECD2B.ch  
 Acq On : 25 Oct 2023 10:50  
 Operator : YP/AJ  
 Sample : AR1660CCC500  
 Misc :  
 ALS Vial : 3 Sample Multiplier: 1

Instrument :  
 ECD\_0  
 ClientSampleId :  
 AR1660CCC500

Integration File signal 1: autoint1.e  
 Integration File signal 2: autoint2.e  
 Quant Time: Oct 25 15:23:56 2023  
 Quant Method : Z:\pestpcbsrv\HPCHEM1\ECD\_0\methods\PO102523.M  
 Quant Title : GC EXTRACTABLES  
 QLast Update : Wed Oct 25 06:04:36 2023  
 Response via : Initial Calibration  
 Integrator: ChemStation

Volume Inj. : 2 µl  
 Signal #1 Phase : ZB-MR1 Signal #2 Phase: ZB-MR2  
 Signal #1 Info : 30Mx0.32mmx 0.50µ Signal #2 Info : 30M x 0.32mm x 0.25µm

Compound	RT#1	RT#2	Resp#1	Resp#2	ng/ml	ng/ml
-----						
System Monitoring Compounds						
1) SA Tetrachlo...	4.476	3.628	110.7E6	40310871	56.026	56.012
2) SA Decachlor...	10.281	8.630	62961287	29553602	55.577	55.083
Target Compounds						
3) L1 AR-1016-1	5.651	4.710	30741024	12599143	558.254	562.614
4) L1 AR-1016-2	5.673	4.728	45911938	17385662	555.231	556.223
5) L1 AR-1016-3	5.735	4.904	29295425	9628825	569.151	568.650
6) L1 AR-1016-4	5.834	4.946	22873084	8158625	562.775	564.308
7) L1 AR-1016-5	6.130	5.159	24355667	10578787	573.842	566.259
31) L7 AR-1260-1	7.260	6.192	40789793	19519139	569.205	553.336
32) L7 AR-1260-2	7.517	6.381	44067989	21742164	558.552	542.382
33) L7 AR-1260-3	7.878	6.534	31469783	20320360	576.233	537.393
34) L7 AR-1260-4	8.105	7.007	36182015	15836045	577.464	548.027
35) L7 AR-1260-5	8.430	7.248	59914386	33093984	559.866	549.920

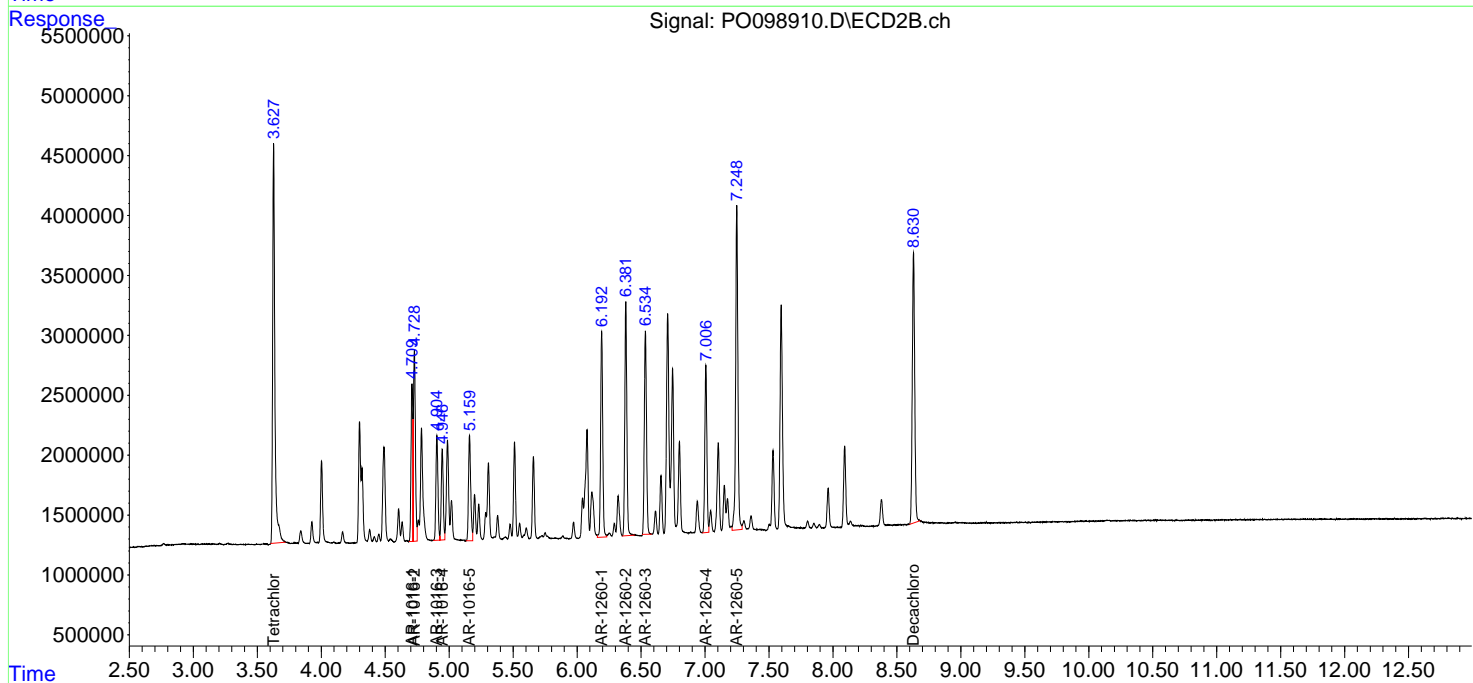
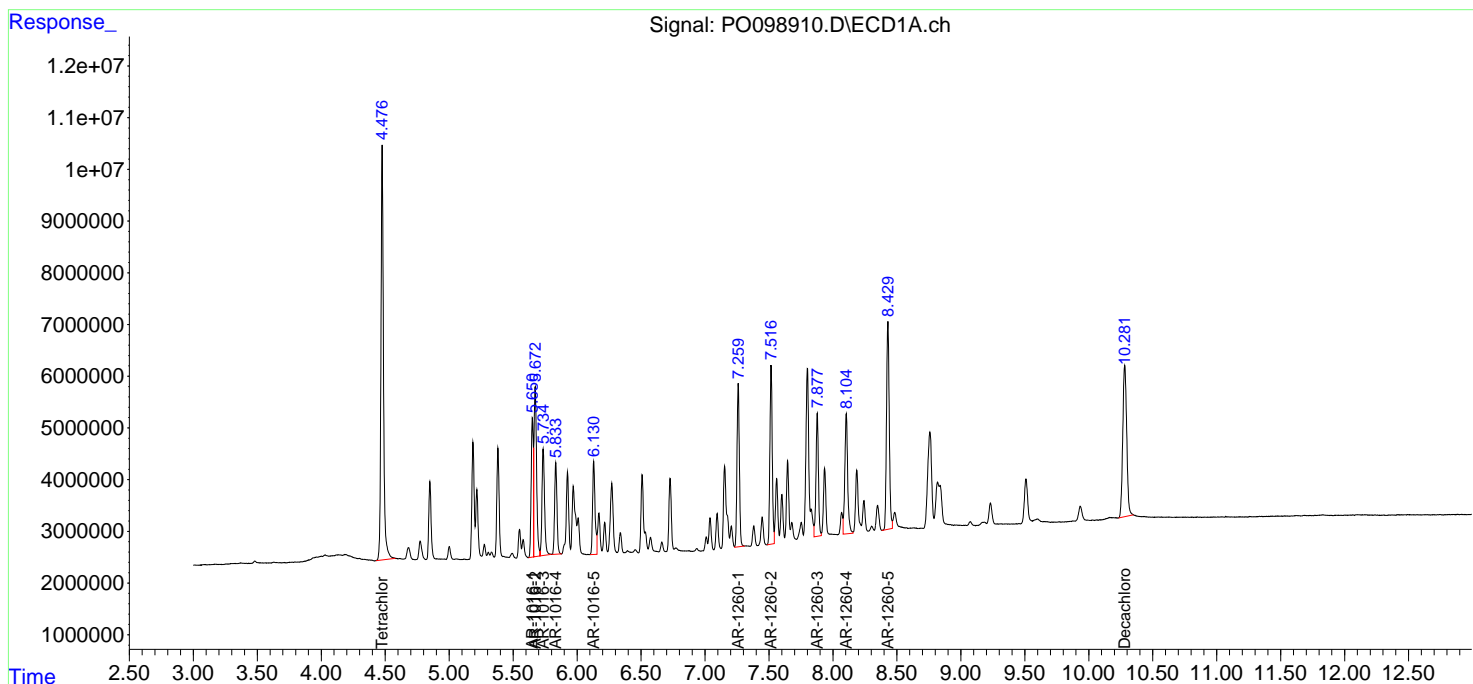
(f)=RT Delta > 1/2 Window (#)=Amounts differ by > 25% (m)=manual int.

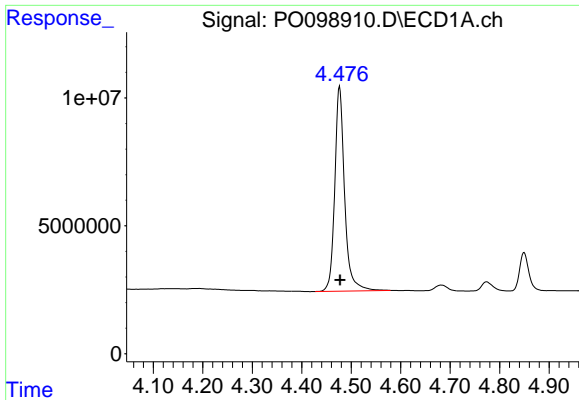
Data Path : Z:\pestpcbsrv\HPCHEM1\ECD\_O\Data\PO102523\  
 Data File : PO098910.D  
 Signal(s) : Signal #1: ECD1A.ch Signal #2: ECD2B.ch  
 Acq On : 25 Oct 2023 10:50  
 Operator : YP/AJ  
 Sample : AR1660CCC500  
 Misc :  
 ALS Vial : 3 Sample Multiplier: 1

Instrument :  
 ECD\_O  
 ClientSampleId :  
 AR1660CCC500

Integration File signal 1: autoint1.e  
 Integration File signal 2: autoint2.e  
 Quant Time: Oct 25 15:23:56 2023  
 Quant Method : Z:\pestpcbsrv\HPCHEM1\ECD\_O\methods\PO102523.M  
 Quant Title : GC EXTRACTABLES  
 QLast Update : Wed Oct 25 06:04:36 2023  
 Response via : Initial Calibration  
 Integrator: ChemStation

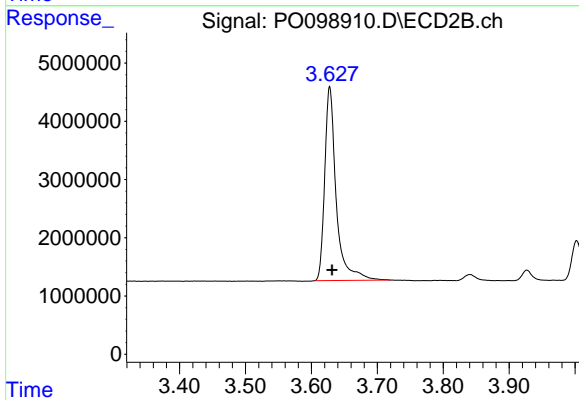
Volume Inj. : 2 µl  
 Signal #1 Phase : ZB-MR1 Signal #2 Phase: ZB-MR2  
 Signal #1 Info : 30Mx0.32mmx 0.50µ Signal #2 Info : 30M x 0.32mm x 0.25µm



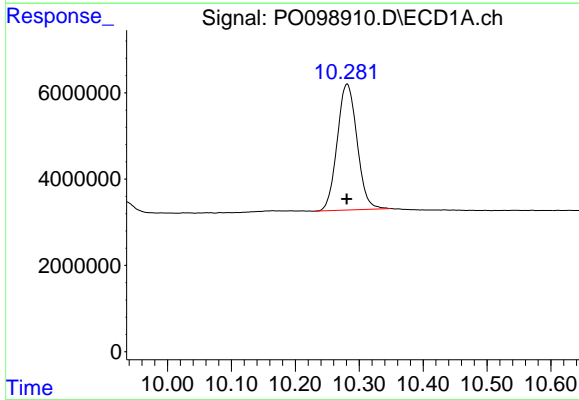


#1 Tetrachloro-m-xylene  
 R.T.: 4.476 min  
 Delta R.T.: -0.002 min  
 Response: 110704124  
 Conc: 56.03 ng/ml

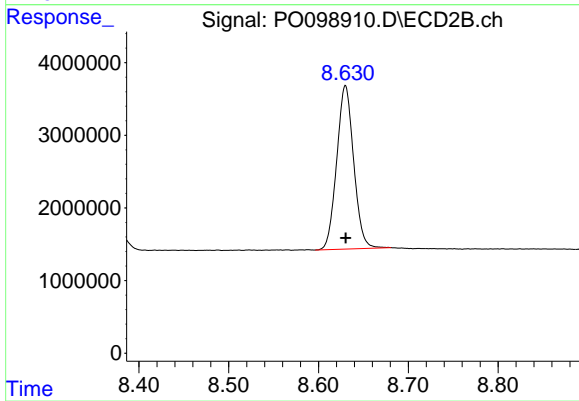
Instrument :  
 ECD\_O  
 ClientSampleId :  
 AR1660CCC500



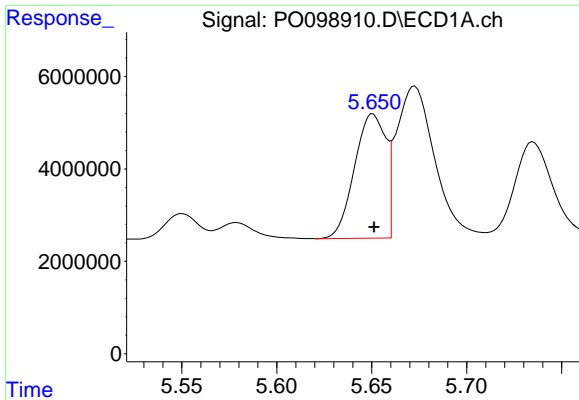
#1 Tetrachloro-m-xylene  
 R.T.: 3.628 min  
 Delta R.T.: -0.004 min  
 Response: 40310871  
 Conc: 56.01 ng/ml



#2 Decachlorobiphenyl  
 R.T.: 10.281 min  
 Delta R.T.: 0.000 min  
 Response: 62961287  
 Conc: 55.58 ng/ml



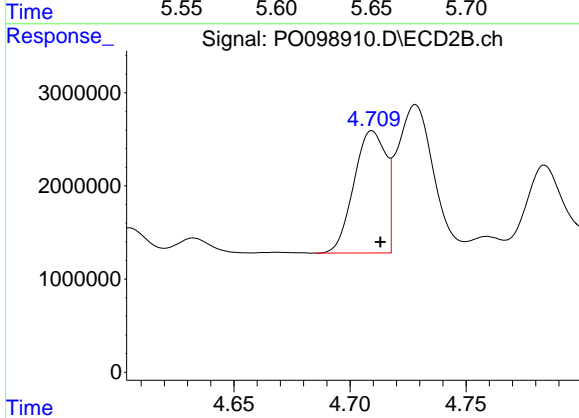
#2 Decachlorobiphenyl  
 R.T.: 8.630 min  
 Delta R.T.: 0.000 min  
 Response: 29553602  
 Conc: 55.08 ng/ml



#3 AR-1016-1

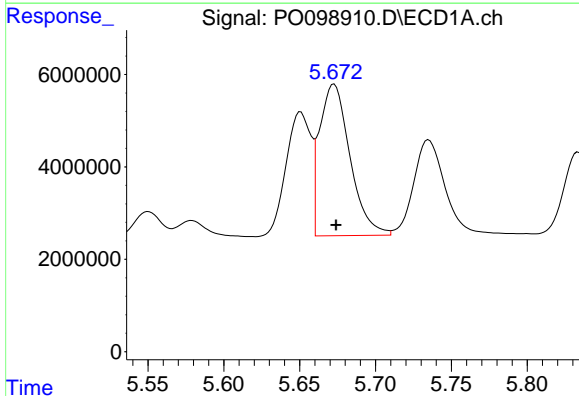
R.T.: 5.651 min  
 Delta R.T.: 0.000 min  
 Response: 30741024  
 Conc: 558.25 ng/ml

Instrument :  
 ECD\_O  
 ClientSampleId :  
 AR1660CCC500



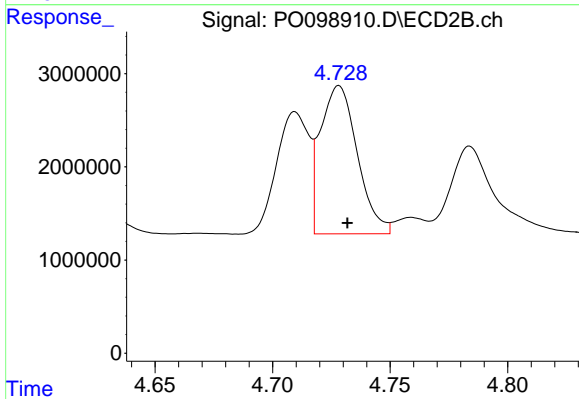
#3 AR-1016-1

R.T.: 4.710 min  
 Delta R.T.: -0.004 min  
 Response: 12599143  
 Conc: 562.61 ng/ml



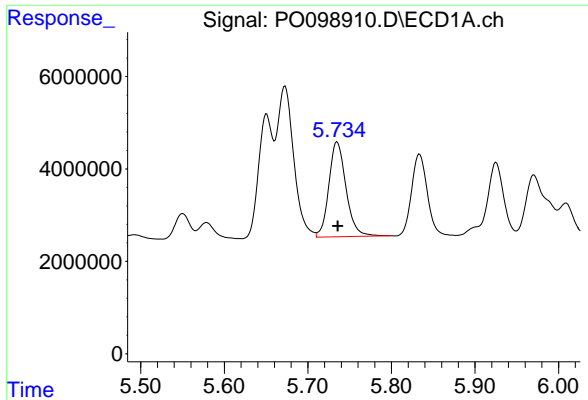
#4 AR-1016-2

R.T.: 5.673 min  
 Delta R.T.: -0.001 min  
 Response: 45911938  
 Conc: 555.23 ng/ml



#4 AR-1016-2

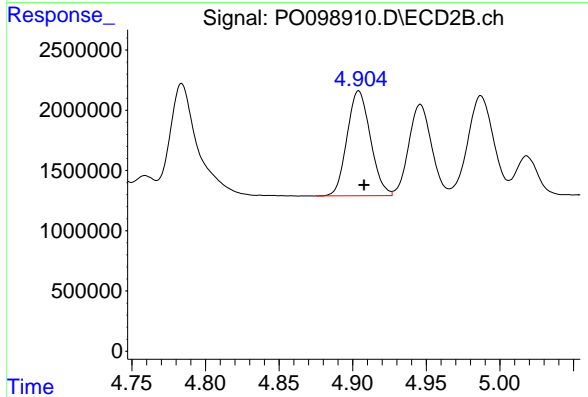
R.T.: 4.728 min  
 Delta R.T.: -0.004 min  
 Response: 17385662  
 Conc: 556.22 ng/ml



#5 AR-1016-3

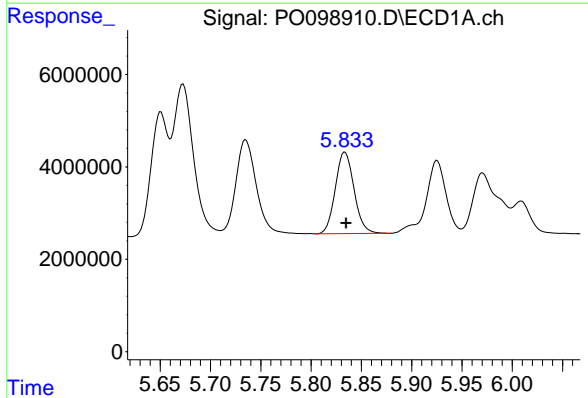
R.T.: 5.735 min  
 Delta R.T.: 0.000 min  
 Response: 29295425  
 Conc: 569.15 ng/ml

Instrument :  
 ECD\_O  
 ClientSampleId :  
 AR1660CCC500



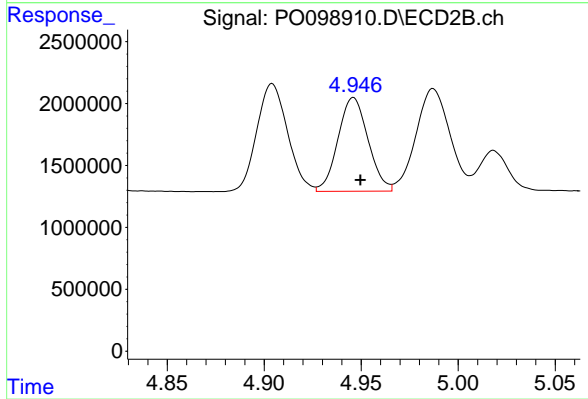
#5 AR-1016-3

R.T.: 4.904 min  
 Delta R.T.: -0.004 min  
 Response: 9628825  
 Conc: 568.65 ng/ml



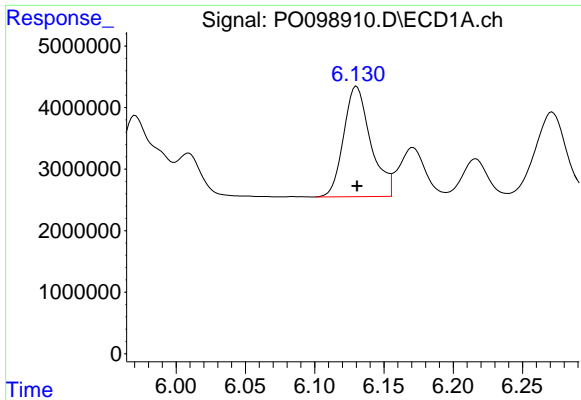
#6 AR-1016-4

R.T.: 5.834 min  
 Delta R.T.: -0.001 min  
 Response: 22873084  
 Conc: 562.77 ng/ml



#6 AR-1016-4

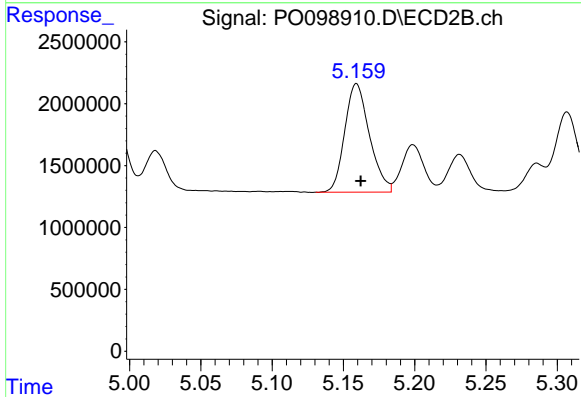
R.T.: 4.946 min  
 Delta R.T.: -0.004 min  
 Response: 8158625  
 Conc: 564.31 ng/ml



#7 AR-1016-5

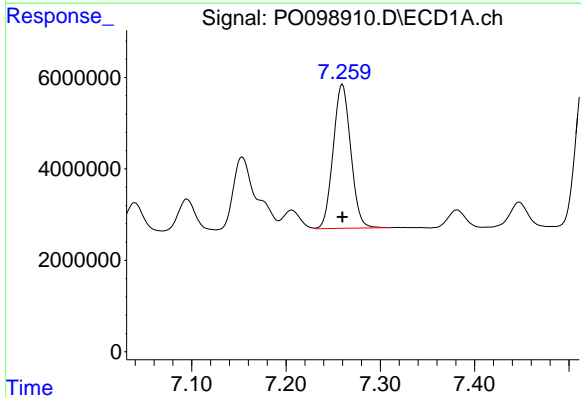
R.T.: 6.130 min  
 Delta R.T.: 0.000 min  
 Response: 24355667  
 Conc: 573.84 ng/ml

Instrument :  
 ECD\_O  
 ClientSampleId :  
 AR1660CCC500



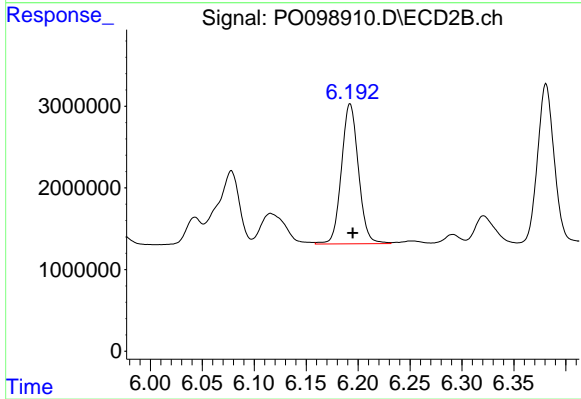
#7 AR-1016-5

R.T.: 5.159 min  
 Delta R.T.: -0.003 min  
 Response: 10578787  
 Conc: 566.26 ng/ml



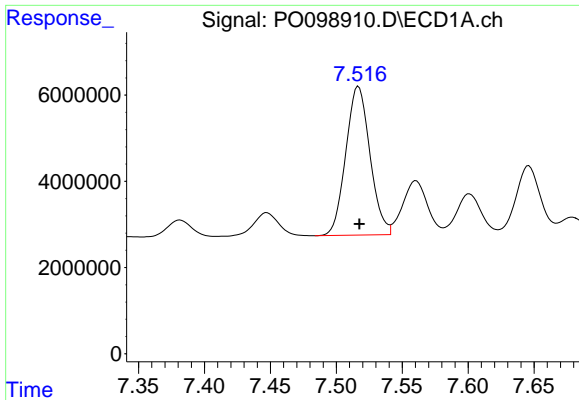
#31 AR-1260-1

R.T.: 7.260 min  
 Delta R.T.: 0.000 min  
 Response: 40789793  
 Conc: 569.20 ng/ml



#31 AR-1260-1

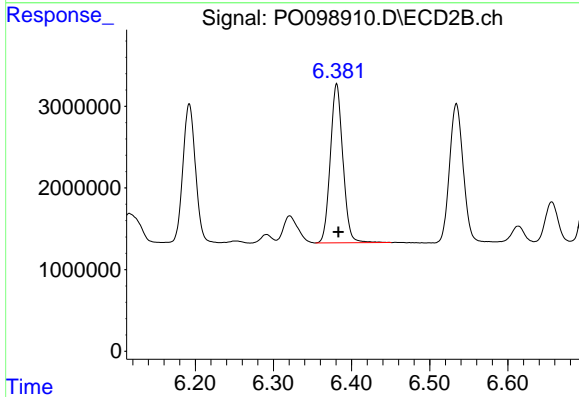
R.T.: 6.192 min  
 Delta R.T.: -0.003 min  
 Response: 19519139  
 Conc: 553.34 ng/ml



#32 AR-1260-2

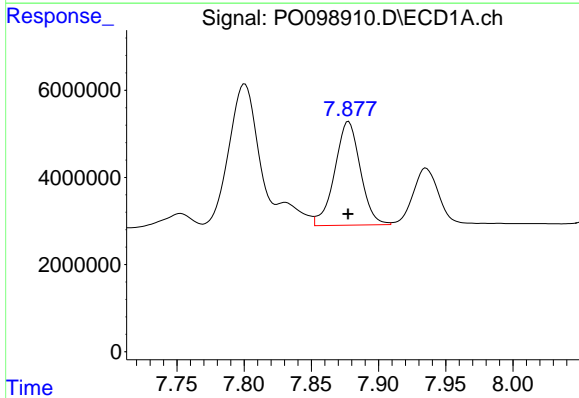
R.T.: 7.517 min  
 Delta R.T.: 0.000 min  
 Response: 44067989  
 Conc: 558.55 ng/ml

Instrument :  
 ECD\_O  
 ClientSampleId :  
 AR1660CCC500



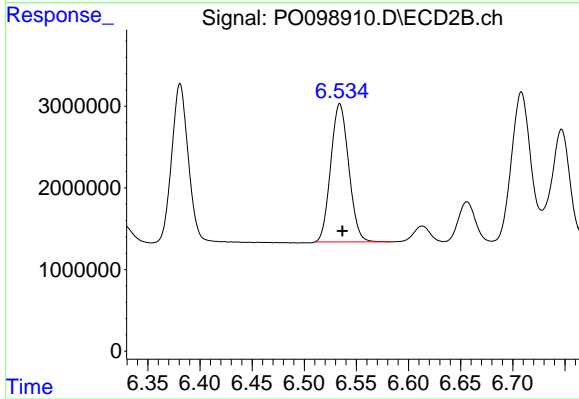
#32 AR-1260-2

R.T.: 6.381 min  
 Delta R.T.: -0.002 min  
 Response: 21742164  
 Conc: 542.38 ng/ml



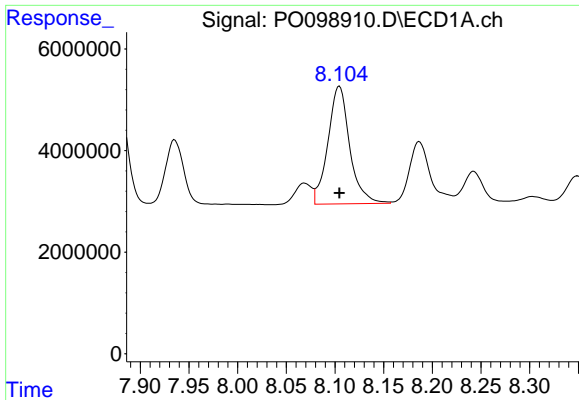
#33 AR-1260-3

R.T.: 7.878 min  
 Delta R.T.: 0.000 min  
 Response: 31469783  
 Conc: 576.23 ng/ml



#33 AR-1260-3

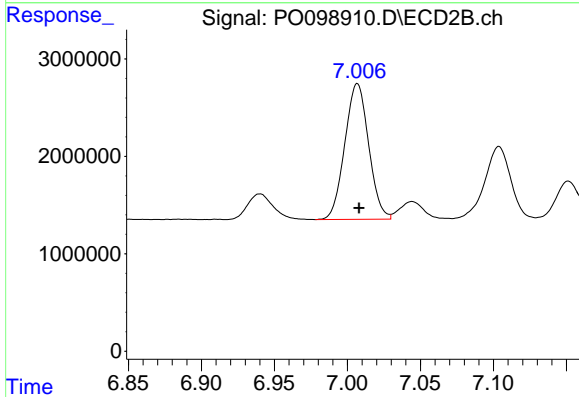
R.T.: 6.534 min  
 Delta R.T.: -0.003 min  
 Response: 20320360  
 Conc: 537.39 ng/ml



#34 AR-1260-4

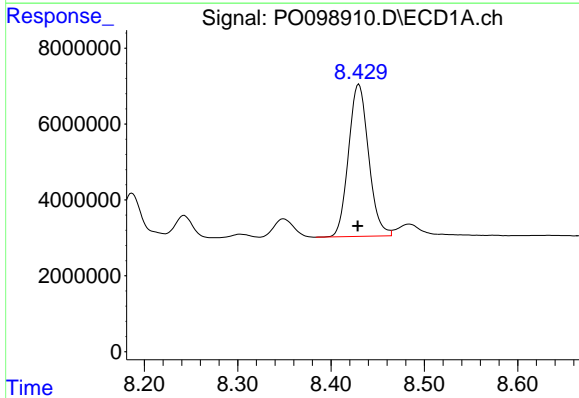
R.T.: 8.105 min  
 Delta R.T.: 0.000 min  
 Response: 36182015  
 Conc: 577.46 ng/ml

Instrument :  
 ECD\_O  
 ClientSampleId :  
 AR1660CCC500



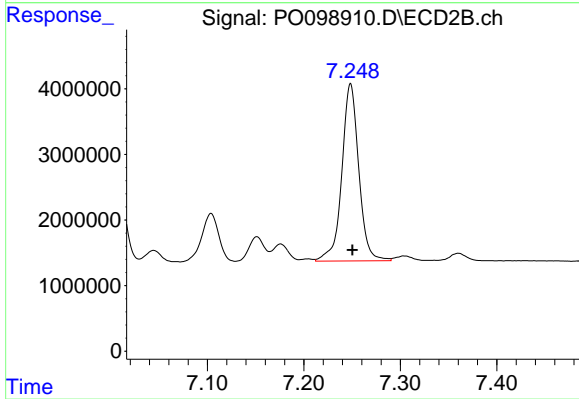
#34 AR-1260-4

R.T.: 7.007 min  
 Delta R.T.: -0.001 min  
 Response: 15836045  
 Conc: 548.03 ng/ml



#35 AR-1260-5

R.T.: 8.430 min  
 Delta R.T.: 0.001 min  
 Response: 59914386  
 Conc: 559.87 ng/ml



#35 AR-1260-5

R.T.: 7.248 min  
 Delta R.T.: -0.002 min  
 Response: 33093984  
 Conc: 549.92 ng/ml