

Data Path : Z:\pestpcbsrv\HPCHEM1\ECD_0\Data\PO102621\
 Data File : PO082166.D
 Signal(s) : Signal #1: ECD1A.CH Signal #2: ECD2B.CH
 Acq On : 26 Oct 2021 11:32
 Operator : AJ\MA
 Sample : M4332-06
 Misc :
 ALS Vial : 7 Sample Multiplier: 1

Instrument :
 ECD_0
 ClientSampleId :
 BB-SAMPLE-2

Manual Integrations
 APPROVED

mohammad
 10/27/2021 2:35:32 PM

Integration File signal 1: autoint1.e
 Integration File signal 2: autoint2.e
 Quant Time: Oct 27 06:16:27 2021
 Quant Method : Z:\pestpcbsrv\HPCHEM1\ECD_0\methods\PO101821.M
 Quant Title : GC EXTRACTABLES
 QLast Update : Tue Oct 19 04:37:47 2021
 Response via : Initial Calibration
 Integrator: ChemStation 6890 Scale Mode: Small noise peaks clipped

Volume Inj. : 2 µl
 Signal #1 Phase : ZB-MR1 Signal #2 Phase: ZB-MR2
 Signal #1 Info : 30Mx0.32mmx 0.50µ Signal #2 Info : 30M x 0.32mm x 0.25µm

Compound	RT#1	RT#2	Resp#1	Resp#2	ng/ml	ng/ml

System Monitoring Compounds						
1) SA Tetrachlo...	4.991	3.973	2322285	850004	28.740	28.809m
2) SA Decachlor...	11.117	9.306	1637915	751888	29.470	29.521

Target Compounds

(f)=RT Delta > 1/2 Window (#)=Amounts differ by > 25% (m)=manual int.

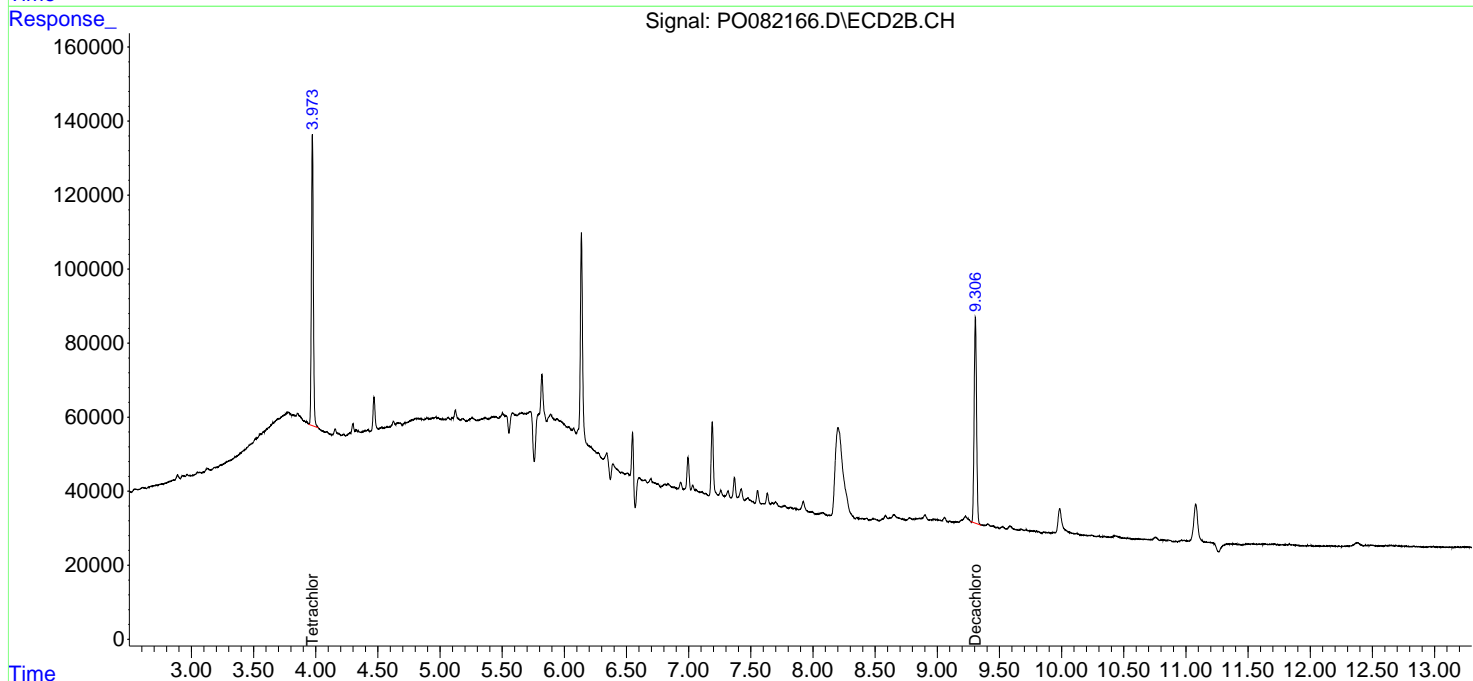
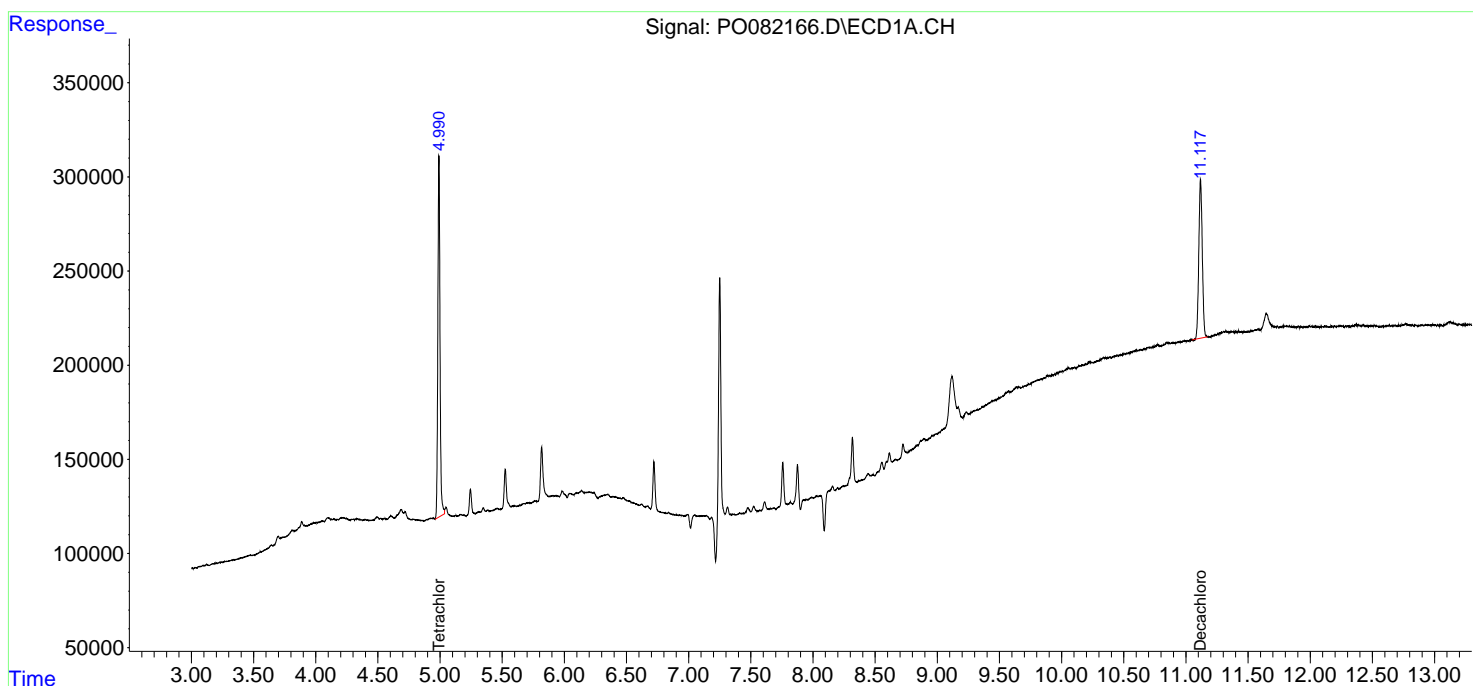
Data Path : Z:\pestpcbsrv\HPCHEM1\ECD_0\Data\PO102621\
 Data File : PO082166.D
 Signal(s) : Signal #1: ECD1A.CH Signal #2: ECD2B.CH
 Acq On : 26 Oct 2021 11:32
 Operator : AJ\MA
 Sample : M4332-06
 Misc :
 ALS Vial : 7 Sample Multiplier: 1

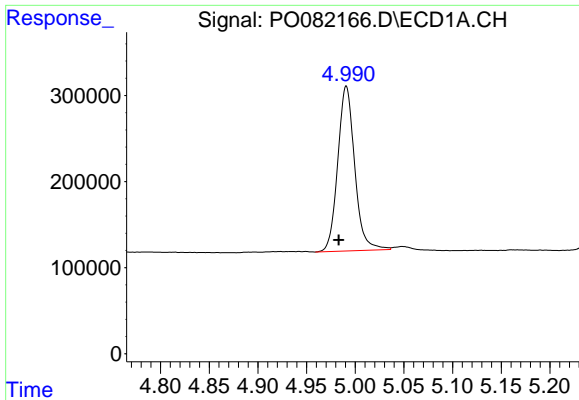
Instrument :
 ECD_O
ClientSampled :
 BB-SAMPLE-2

Manual Integrations
APPROVED
 mohammad
 10/27/2021 2:35:32 PM

Integration File signal 1: autoint1.e
 Integration File signal 2: autoint2.e
 Quant Time: Oct 27 06:16:27 2021
 Quant Method : Z:\pestpcbsrv\HPCHEM1\ECD_0\methods\PO101821.M
 Quant Title : GC EXTRACTABLES
 QLast Update : Tue Oct 19 04:37:47 2021
 Response via : Initial Calibration
 Integrator: ChemStation 6890 Scale Mode: Small noise peaks clipped

Volume Inj. : 2 µl
 Signal #1 Phase : ZB-MR1 Signal #2 Phase: ZB-MR2
 Signal #1 Info : 30Mx0.32mmx 0.50µ Signal #2 Info : 30M x 0.32mm x 0.25µm

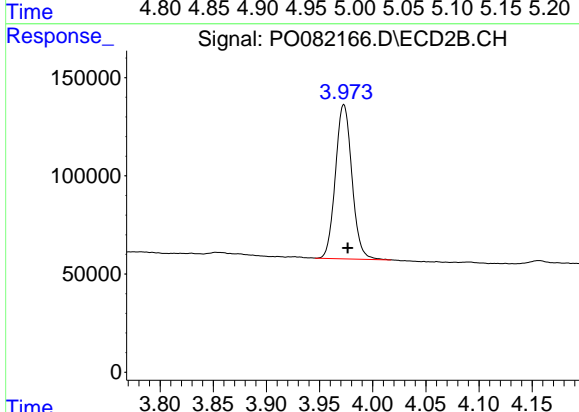




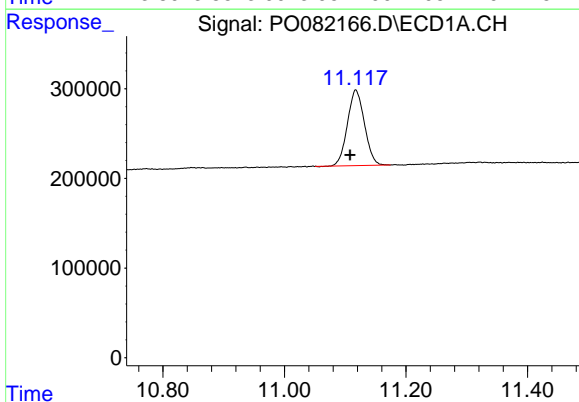
#1 Tetrachloro-m-xylene
 R.T.: 4.991 min
 Delta R.T.: 0.008 min
 Response: 2322285
 Conc: 28.74 ng/ml

Instrument :
 ECD_O
 ClientSampled :
 BB-SAMPLE-2

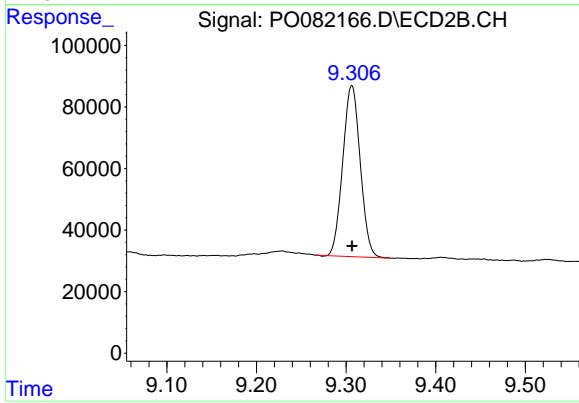
Manual Integrations
APPROVED
 mohammad
 10/27/2021 2:35:32 PM



#1 Tetrachloro-m-xylene
 R.T.: 3.973 min
 Delta R.T.: -0.004 min
 Response: 850004
 Conc: 28.81 ng/ml m



#2 Decachlorobiphenyl
 R.T.: 11.117 min
 Delta R.T.: 0.009 min
 Response: 1637915
 Conc: 29.47 ng/ml



#2 Decachlorobiphenyl
 R.T.: 9.306 min
 Delta R.T.: 0.000 min
 Response: 751888
 Conc: 29.52 ng/ml