

Data Path : Z:\pestpcbsrv\HPCHEM1\ECD_0\Data\PO102621\
 Data File : PO082175.D
 Signal(s) : Signal #1: ECD1A.CH Signal #2: ECD2B.CH
 Acq On : 26 Oct 2021 15:34
 Operator : AJ\MA
 Sample : M4357-01
 Misc :
 ALS Vial : 16 Sample Multiplier: 1

Instrument :
 ECD_0
 ClientSampleId :
 CL-01-102521

Manual Integrations
 APPROVED

mohammad
 10/27/2021 2:35:35 PM

Integration File signal 1: autoint1.e
 Integration File signal 2: autoint2.e
 Quant Time: Oct 27 02:29:52 2021
 Quant Method : Z:\pestpcbsrv\HPCHEM1\ECD_0\methods\PO101821.M
 Quant Title : GC EXTRACTABLES
 QLast Update : Tue Oct 19 04:37:47 2021
 Response via : Initial Calibration
 Integrator: ChemStation 6890 Scale Mode: Small noise peaks clipped

Volume Inj. : 2 µl
 Signal #1 Phase : ZB-MR1 Signal #2 Phase: ZB-MR2
 Signal #1 Info : 30Mx0.32mmx 0.50µ Signal #2 Info : 30M x 0.32mm x 0.25µm

Compound	RT#1	RT#2	Resp#1	Resp#2	ng/ml	ng/ml

System Monitoring Compounds						
1) SA Tetrachlo...	4.981	3.975	2095320	727604	25.931	24.661
2) SA Decachlor...	11.105	9.305	1275200	514539	22.944	20.202
Target Compounds						
26) L6 AR-1254-1	7.233	6.111	185104	126814	77.291	76.148
27) L6 AR-1254-2	7.467	6.273	275312	63820	75.476	42.747 #
28) L6 AR-1254-3	7.851	6.694	313773	157775	86.706m	70.458
29) L6 AR-1254-4	8.146	6.935	115801	64565	42.972m	43.960m
30) L6 AR-1254-5	8.580	7.366	217477	148649	74.671	72.184

(f)=RT Delta > 1/2 Window (#)=Amounts differ by > 25% (m)=manual int.

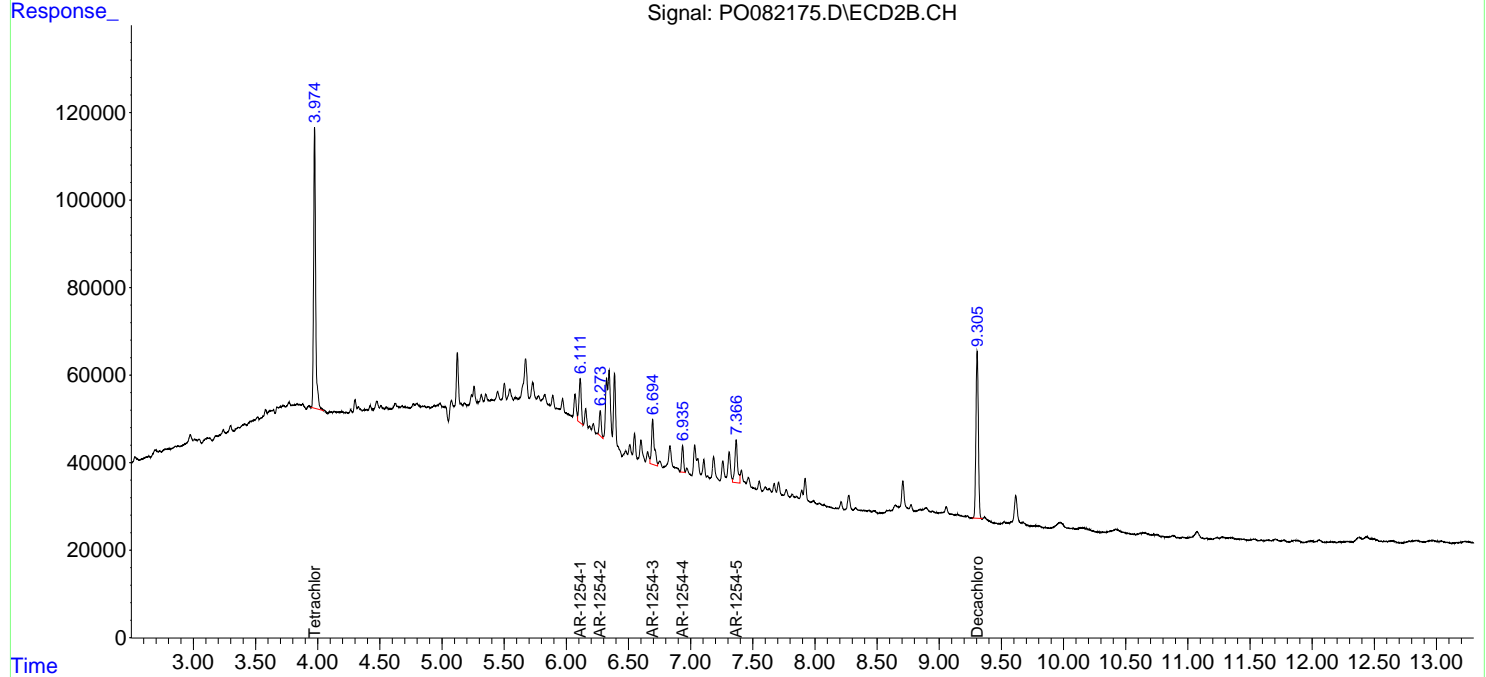
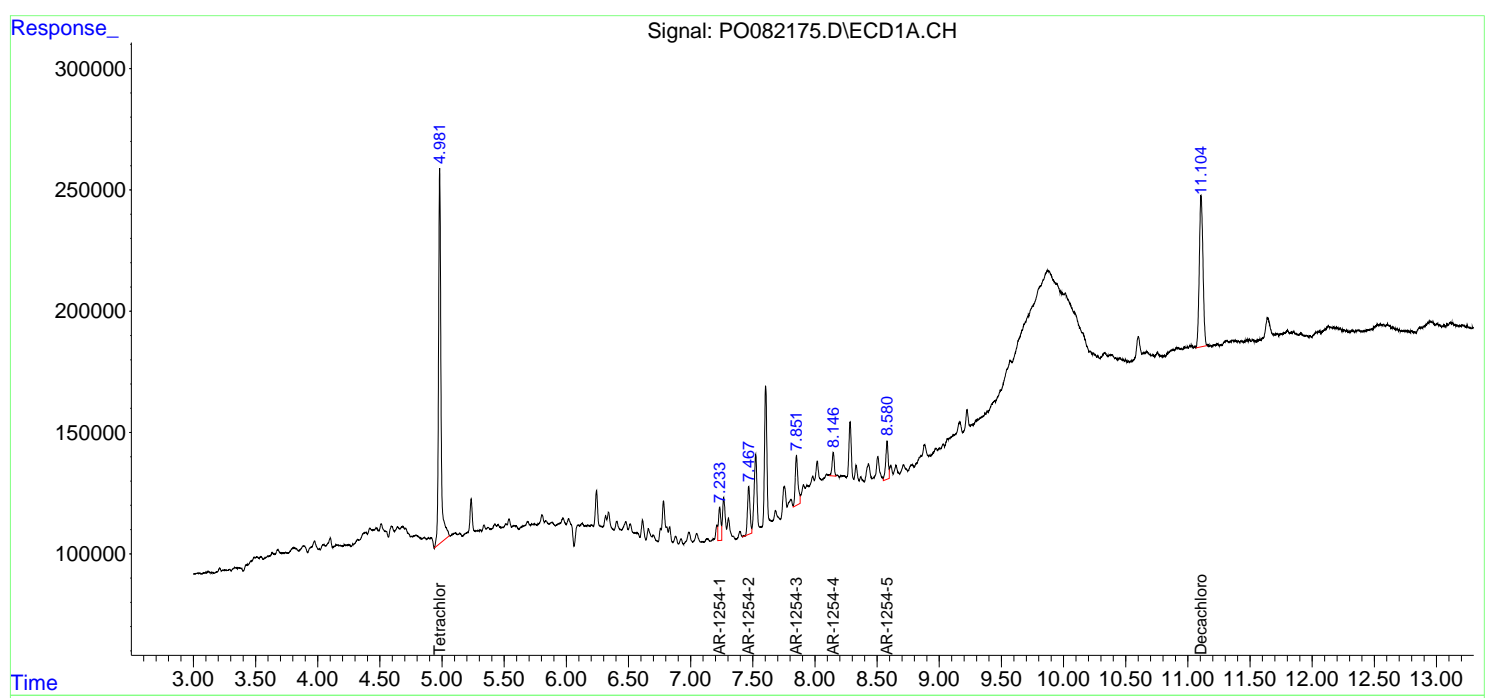
Data Path : Z:\pestpcbsrv\HPCHEM1\ECD_0\Data\PO102621\
 Data File : PO082175.D
 Signal(s) : Signal #1: ECD1A.CH Signal #2: ECD2B.CH
 Acq On : 26 Oct 2021 15:34
 Operator : AJ\MA
 Sample : M4357-01
 Misc :
 ALS Vial : 16 Sample Multiplier: 1

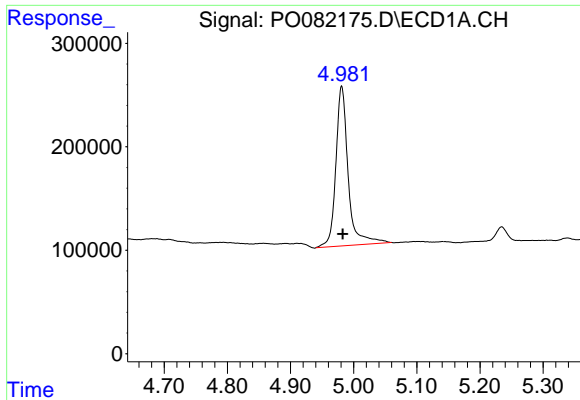
Instrument :
 ECD_O
Client Sampled :
 CL-01-102521

Manual Integrations
APPROVED
 mohammad
 10/27/2021 2:35:35 PM

Integration File signal 1: autoint1.e
 Integration File signal 2: autoint2.e
 Quant Time: Oct 27 02:29:52 2021
 Quant Method : Z:\pestpcbsrv\HPCHEM1\ECD_0\methods\PO101821.M
 Quant Title : GC EXTRACTABLES
 QLast Update : Tue Oct 19 04:37:47 2021
 Response via : Initial Calibration
 Integrator: ChemStation 6890 Scale Mode: Small noise peaks clipped

Volume Inj. : 2 µl
 Signal #1 Phase : ZB-MR1 Signal #2 Phase: ZB-MR2
 Signal #1 Info : 30Mx0.32mmx 0.50µ Signal #2 Info : 30M x 0.32mm x 0.25µm

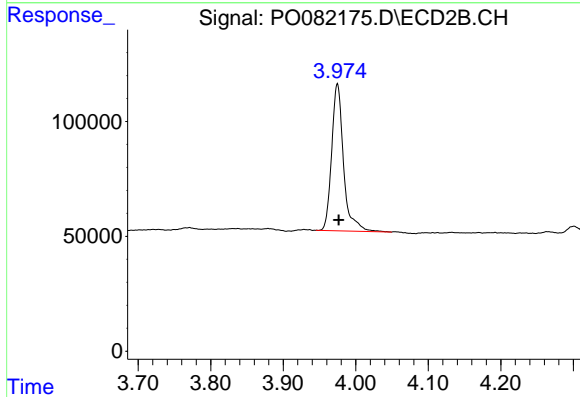




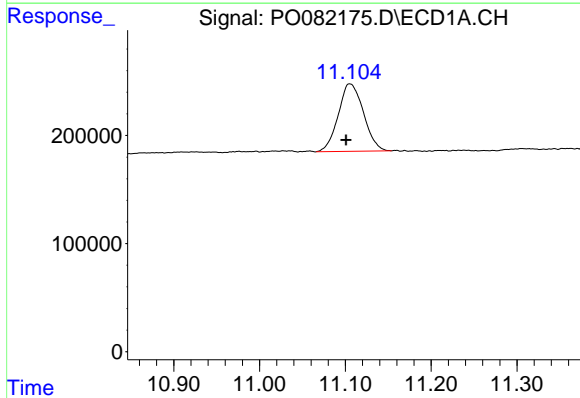
#1 Tetrachloro-m-xylene
 R.T.: 4.981 min
 Delta R.T.: -0.002 min
 Response: 2095320
 Conc: 25.93 ng/ml

Instrument :
 ECD_O
ClientSampled :
 CL-01-102521

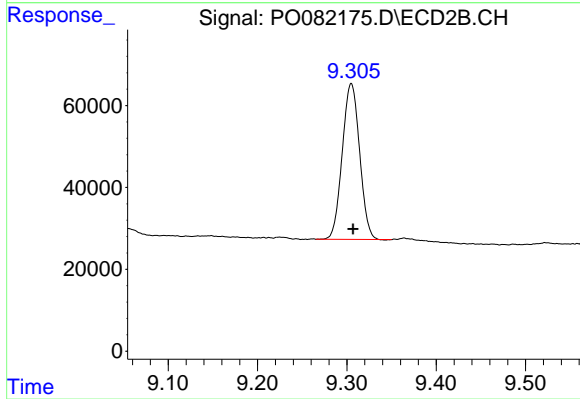
Manual Integrations
APPROVED
 mohammad
 10/27/2021 2:35:35 PM



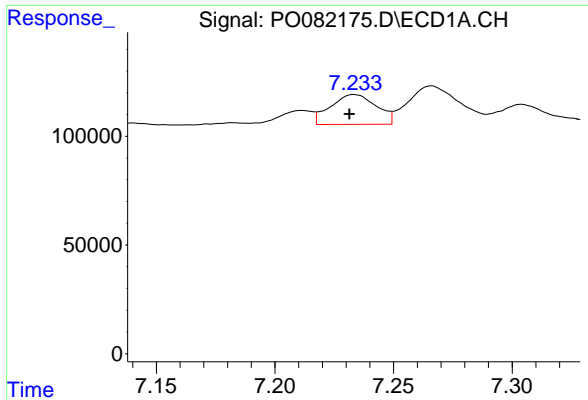
#1 Tetrachloro-m-xylene
 R.T.: 3.975 min
 Delta R.T.: -0.002 min
 Response: 727604
 Conc: 24.66 ng/ml



#2 Decachlorobiphenyl
 R.T.: 11.105 min
 Delta R.T.: 0.004 min
 Response: 1275200
 Conc: 22.94 ng/ml



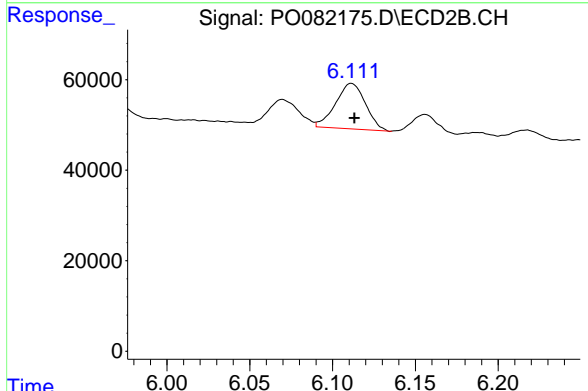
#2 Decachlorobiphenyl
 R.T.: 9.305 min
 Delta R.T.: -0.002 min
 Response: 514539
 Conc: 20.20 ng/ml



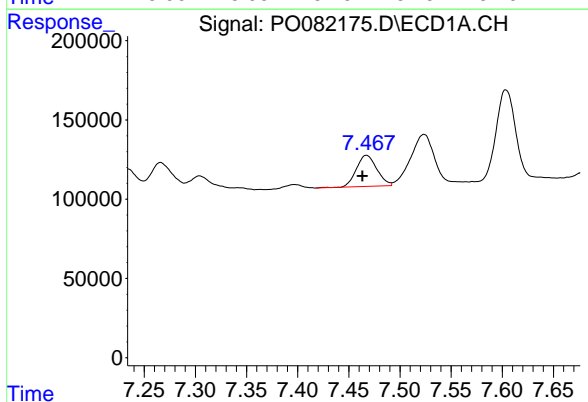
#26 AR-1254-1
 R.T.: 7.233 min
 Delta R.T.: 0.002 min
 Response: 185104
 Conc: 77.29 ng/ml

Instrument :
 ECD_O
ClientSampled :
 CL-01-102521

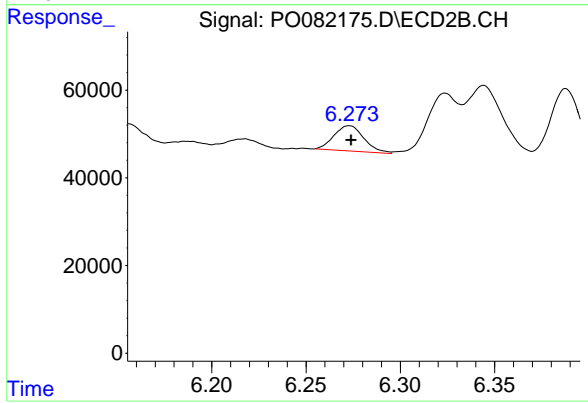
Manual Integrations
APPROVED
 mohammad
 10/27/2021 2:35:35 PM



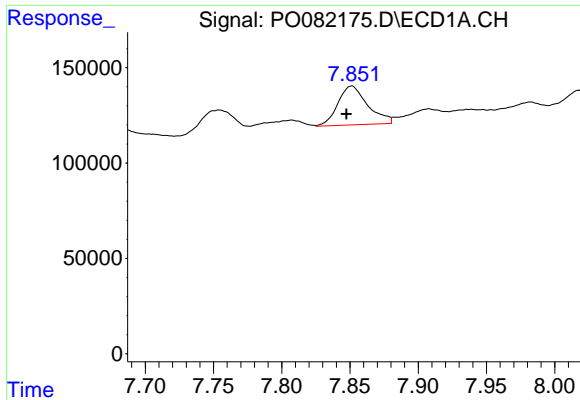
#26 AR-1254-1
 R.T.: 6.111 min
 Delta R.T.: -0.002 min
 Response: 126814
 Conc: 76.15 ng/ml



#27 AR-1254-2
 R.T.: 7.467 min
 Delta R.T.: 0.004 min
 Response: 275312
 Conc: 75.48 ng/ml



#27 AR-1254-2
 R.T.: 6.273 min
 Delta R.T.: -0.001 min
 Response: 63820
 Conc: 42.75 ng/ml

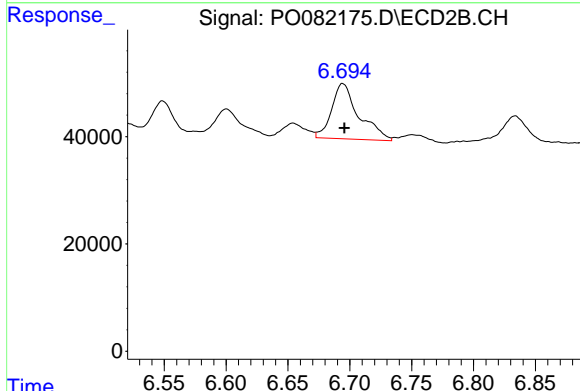


#28 AR-1254-3

R.T.: 7.851 min
 Delta R.T.: 0.004 min
 Response: 313773
 Conc: 86.71 ng/ml m

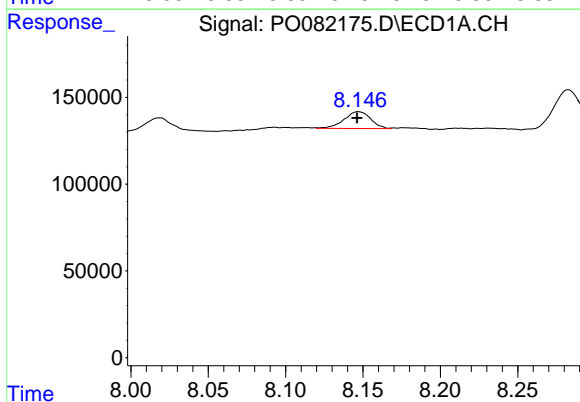
Instrument :
 ECD_O
ClientSampled :
 CL-01-102521

Manual Integrations
APPROVED
 mohammad
 10/27/2021 2:35:35 PM



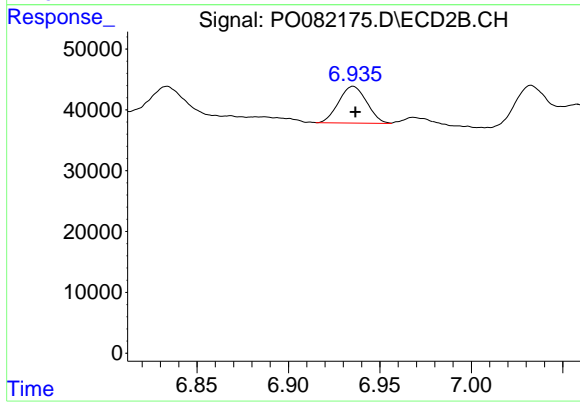
#28 AR-1254-3

R.T.: 6.694 min
 Delta R.T.: -0.001 min
 Response: 157775
 Conc: 70.46 ng/ml



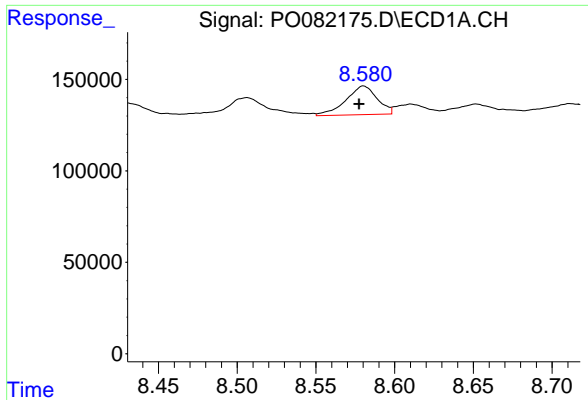
#29 AR-1254-4

R.T.: 8.146 min
 Delta R.T.: 0.000 min
 Response: 115801
 Conc: 42.97 ng/ml m



#29 AR-1254-4

R.T.: 6.935 min
 Delta R.T.: -0.002 min
 Response: 64565
 Conc: 43.96 ng/ml m



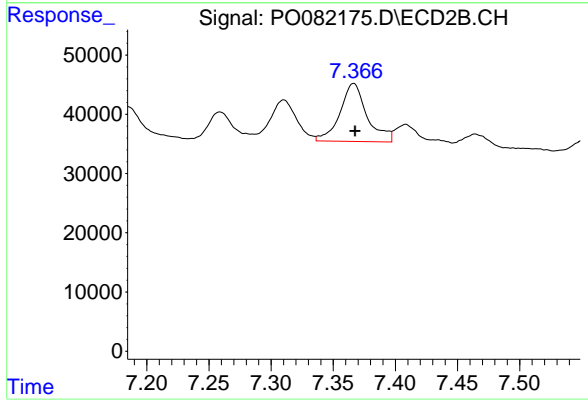
#30 AR-1254-5

R.T.: 8.580 min
Delta R.T.: 0.003 min
Response: 217477
Conc: 74.67 ng/ml

Instrument :
ECD_O
ClientSampleId :
CL-01-102521

Manual Integrations
APPROVED

mohammad
10/27/2021 2:35:35 PM



#30 AR-1254-5

R.T.: 7.366 min
Delta R.T.: -0.001 min
Response: 148649
Conc: 72.18 ng/ml