

Data Path : Z:\pestpcbsrv\HPCHEM1\ECD\_0\Data\PO102621\  
 Data File : PO082186.D  
 Signal(s) : Signal #1: ECD1A.CH Signal #2: ECD2B.CH  
 Acq On : 26 Oct 2021 19:02  
 Operator : AJ\MA  
 Sample : M4340-10  
 Misc :  
 ALS Vial : 22 Sample Multiplier: 1

Instrument :  
 ECD\_0  
 ClientSampleId :  
 TH-EED

Integration File signal 1: autoint1.e  
 Integration File signal 2: autoint2.e  
 Quant Time: Oct 27 02:32:31 2021  
 Quant Method : Z:\pestpcbsrv\HPCHEM1\ECD\_0\methods\PO101821.M  
 Quant Title : GC EXTRACTABLES  
 QLast Update : Tue Oct 19 04:37:47 2021  
 Response via : Initial Calibration  
 Integrator: ChemStation 6890 Scale Mode: Small noise peaks clipped

Volume Inj. : 2 µl  
 Signal #1 Phase : ZB-MR1 Signal #2 Phase: ZB-MR2  
 Signal #1 Info : 30Mx0.32mmx 0.50µ Signal #2 Info : 30M x 0.32mm x 0.25µm

Compound	RT#1	RT#2	Resp#1	Resp#2	ng/ml	ng/ml
-----						
System Monitoring Compounds						
1) SA Tetrachlo...	4.980	3.973	2039260	751781	25.237	25.480
2) SA Decachlor...	11.103	9.302	991364	460798	17.837	18.092

Target Compounds

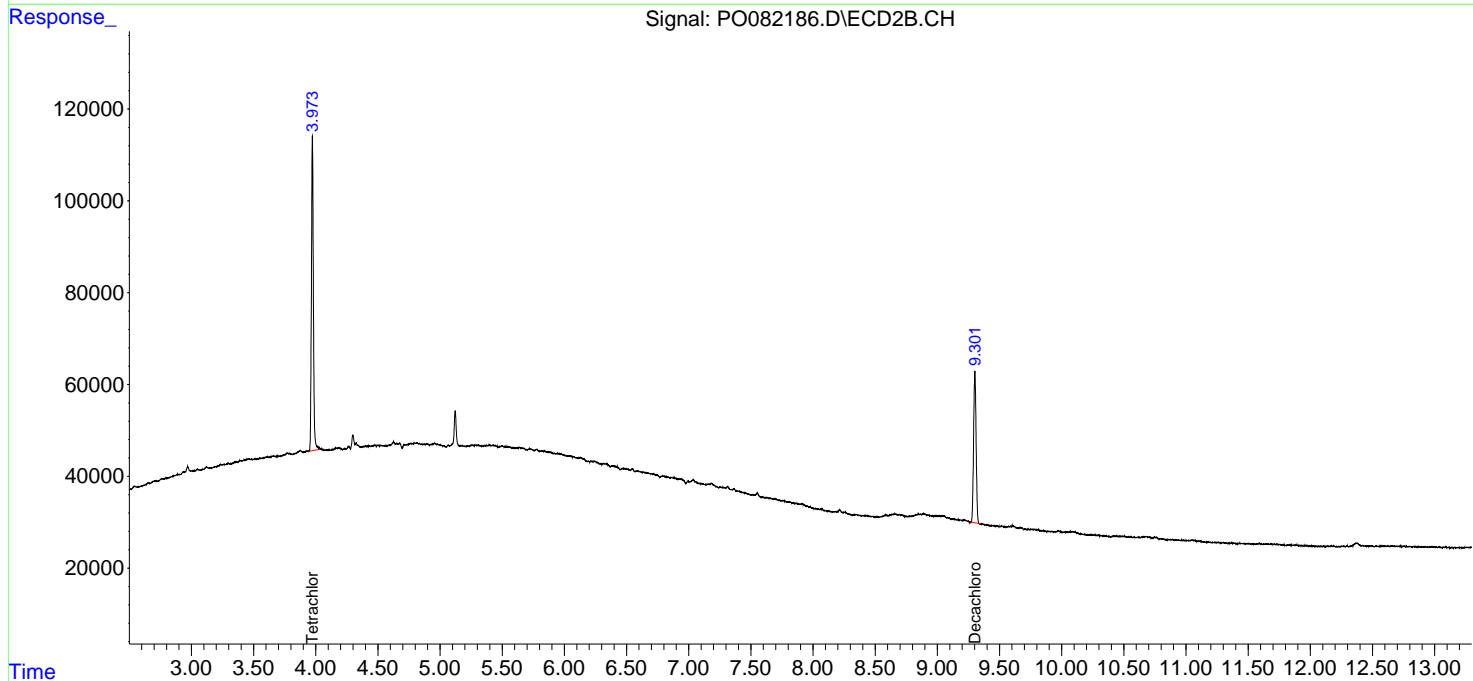
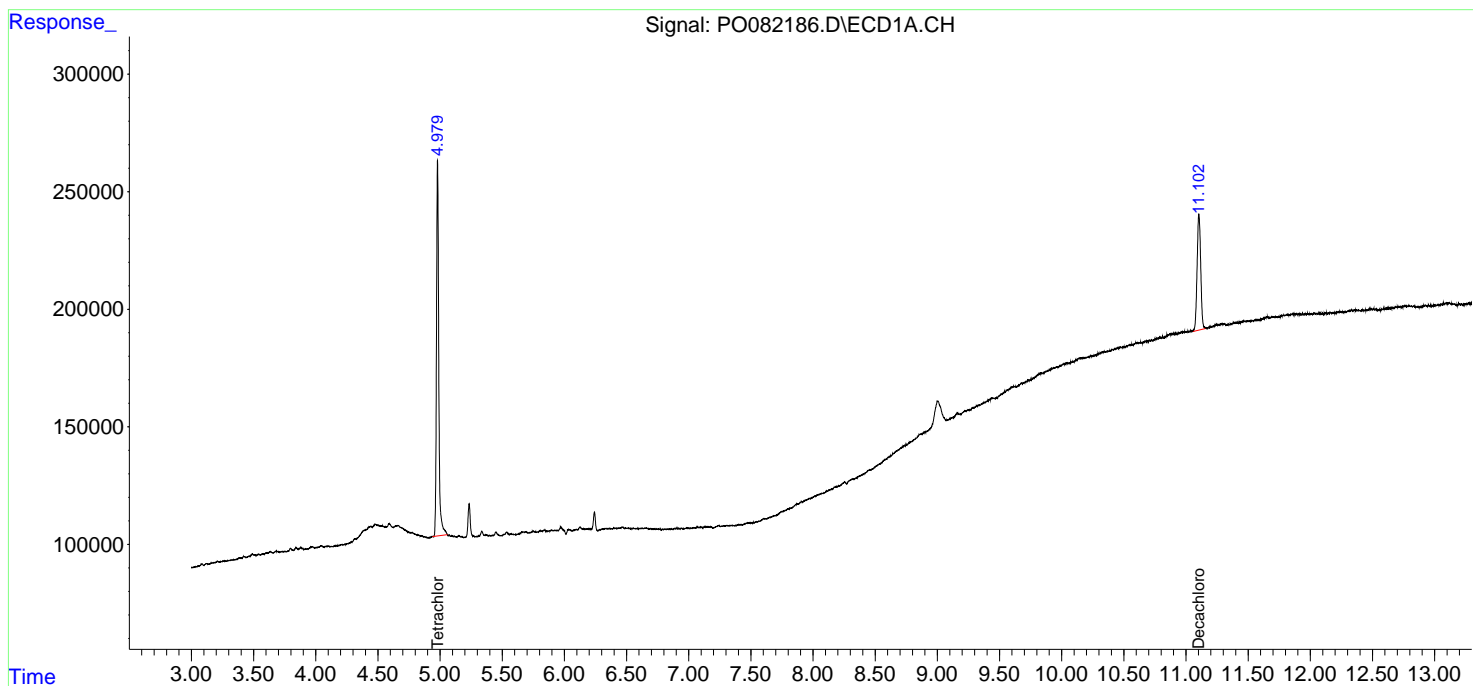
(f)=RT Delta > 1/2 Window (#)=Amounts differ by > 25% (m)=manual int.

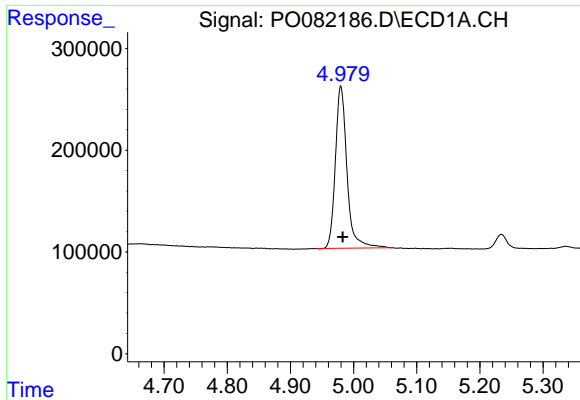
Data Path : Z:\pestpcbsrv\HPCHEM1\ECD\_0\Data\PO102621\  
 Data File : PO082186.D  
 Signal(s) : Signal #1: ECD1A.CH Signal #2: ECD2B.CH  
 Acq On : 26 Oct 2021 19:02  
 Operator : AJ\MA  
 Sample : M4340-10  
 Misc :  
 ALS Vial : 22 Sample Multiplier: 1

Instrument :  
 ECD\_O  
 ClientSampleId :  
 TH-EED

Integration File signal 1: autoint1.e  
 Integration File signal 2: autoint2.e  
 Quant Time: Oct 27 02:32:31 2021  
 Quant Method : Z:\pestpcbsrv\HPCHEM1\ECD\_0\methods\PO101821.M  
 Quant Title : GC EXTRACTABLES  
 QLast Update : Tue Oct 19 04:37:47 2021  
 Response via : Initial Calibration  
 Integrator: ChemStation 6890 Scale Mode: Small noise peaks clipped

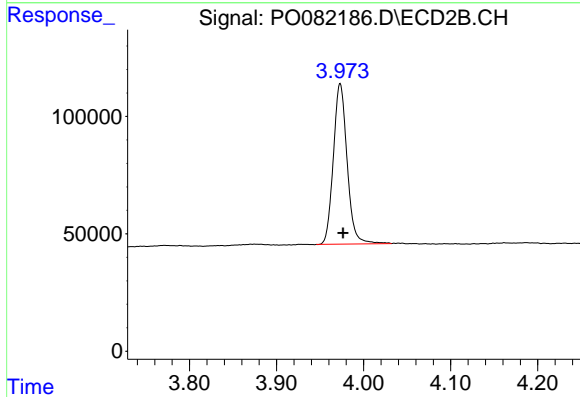
Volume Inj. : 2 µl  
 Signal #1 Phase : ZB-MR1 Signal #2 Phase: ZB-MR2  
 Signal #1 Info : 30Mx0.32mmx 0.50µ Signal #2 Info : 30M x 0.32mm x 0.25µm



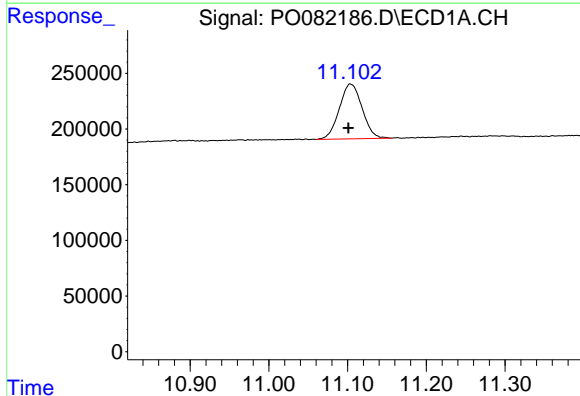


#1 Tetrachloro-m-xylene  
 R.T.: 4.980 min  
 Delta R.T.: -0.003 min  
 Response: 2039260  
 Conc: 25.24 ng/ml

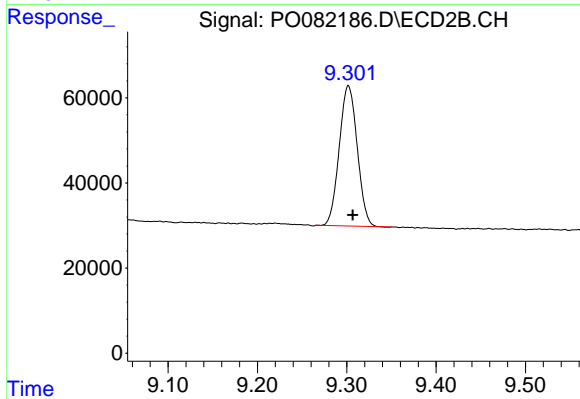
Instrument :  
 ECD\_O  
 ClientSampleId :  
 TH-EED



#1 Tetrachloro-m-xylene  
 R.T.: 3.973 min  
 Delta R.T.: -0.003 min  
 Response: 751781  
 Conc: 25.48 ng/ml



#2 Decachlorobiphenyl  
 R.T.: 11.103 min  
 Delta R.T.: 0.002 min  
 Response: 991364  
 Conc: 17.84 ng/ml



#2 Decachlorobiphenyl  
 R.T.: 9.302 min  
 Delta R.T.: -0.005 min  
 Response: 460798  
 Conc: 18.09 ng/ml