

Data Path : Z:\pestpcbsrv\HPCHEM1\ECD_0\Data\PO102720\
 Data File : PO072854.D
 Signal(s) : Signal #1: ECD1A.CH Signal #2: ECD2B.CH
 Acq On : 28 Oct 2020 2:26
 Operator : DD\AJ
 Sample : I.BLK
 Misc :
 ALS Vial : 2 Sample Multiplier: 1

Instrument :
 ECD_0
 ClientSampleId :

Integration File signal 1: autoint1.e
 Integration File signal 2: autoint2.e
 Quant Time: Oct 28 07:43:08 2020
 Quant Method : Z:\pestpcbsrv\HPCHEM1\ECD_0\methods\PO102620.M
 Quant Title : GC EXTRACTABLES
 QLast Update : Tue Oct 27 16:48:42 2020
 Response via : Initial Calibration
 Integrator: ChemStation 6890 Scale Mode: Small noise peaks clipped

Volume Inj. : 2 µl
 Signal #1 Phase : ZB-MR1 Signal #2 Phase: ZB-MR2
 Signal #1 Info : 30Mx0.32mmx 0.50µ Signal #2 Info : 30M x 0.32mm x 0.25µm

	Compound	RT#1	RT#2	Resp#1	Resp#2	ng/ml	ng/ml

System Monitoring Compounds							
1)	SA Tetrachlo...	4.949	4.021	817918	583171	17.740	16.640
2)	SA Decachlor...	10.982	9.307	894578	769501	24.214	23.074
Target Compounds							
9)	L2 AR-1221-2	5.304	4.372	16569	8354	40.687	24.599 #
20)	L4 AR-1242-5	7.241	6.168f	5945	44491	5.804	41.461 #
24)	L5 AR-1248-4	7.228	0.000	4667	0	2.584	N.D. #
25)	L5 AR-1248-5	7.241f	6.168f	5945	44491	3.449	28.897 #
26)	L6 AR-1254-1	7.191	6.168f	100513	44491	57.998	19.767 #
28)	L6 AR-1254-3	7.818f	0.000	22377	0	8.280	N.D. #
31)	L7 AR-1260-1	0.000	6.853	0	568	N.D.	0.286 #
35)	L7 AR-1260-5	9.155	0.000	742654	0	183.092	N.D. #
37)	L8 AR-1262-2	9.155	0.000	742654	0	167.862	N.D. #
38)	L8 AR-1262-3	0.000	8.219	0	44167	N.D.	24.137 #
39)	L8 AR-1262-4	9.581f	0.000	130874	0	54.560	N.D. #
41)	L9 AR-1268-1	0.000	8.219	0	44167	N.D.	8.475 #
42)	L9 AR-1268-2	9.581	0.000	130874	0	25.854	N.D. #
43)	L9 AR-1268-3	9.791	8.497	154887	7332	35.707	1.742 #
45)	L9 AR-1268-5	10.649	9.060	23335	6079	1.682	0.469 #

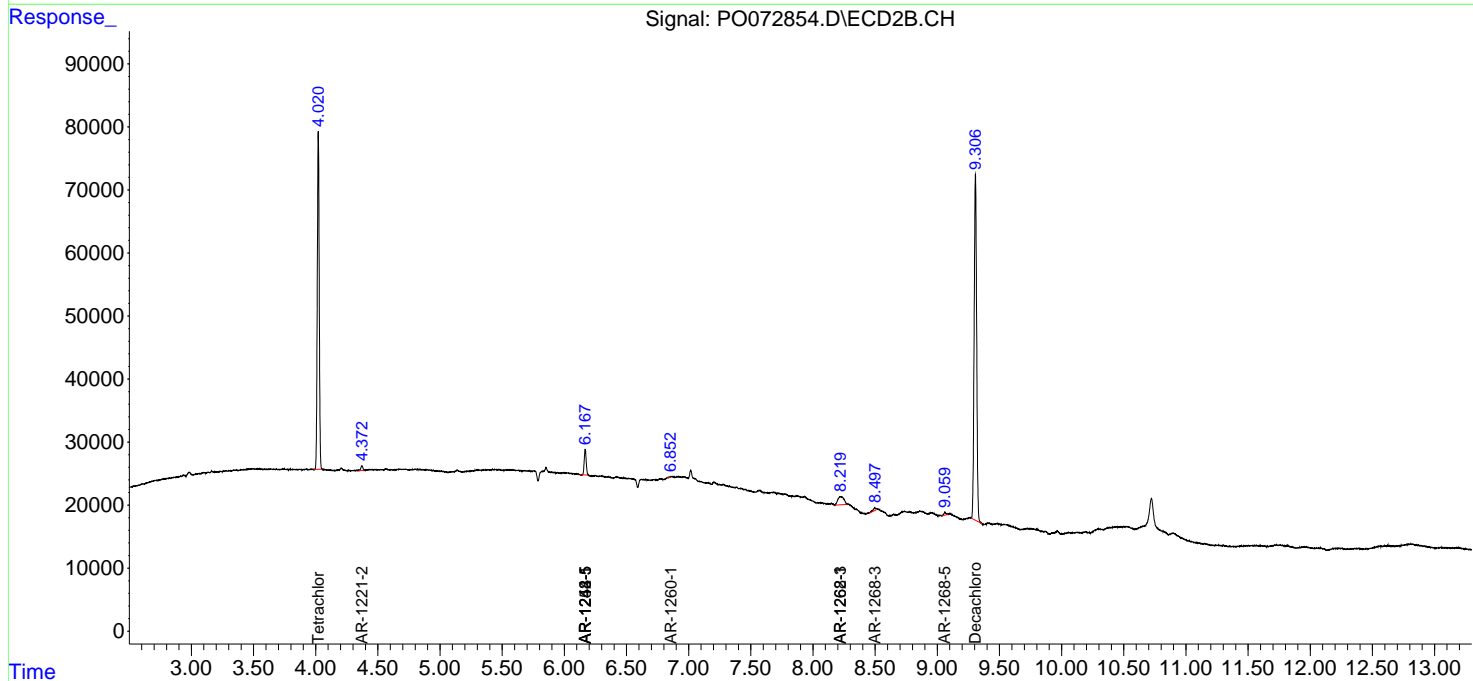
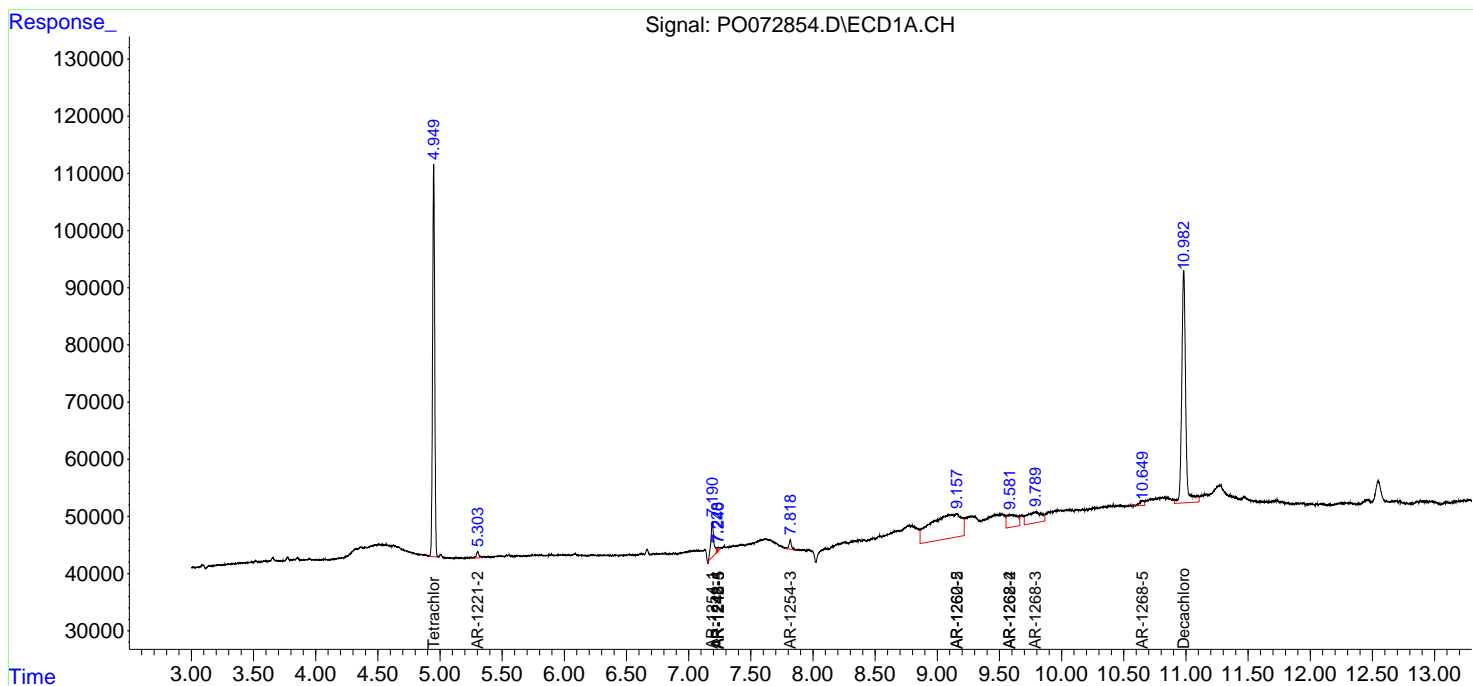
(f)=RT Delta > 1/2 Window (#)=Amounts differ by > 25% (m)=manual int.

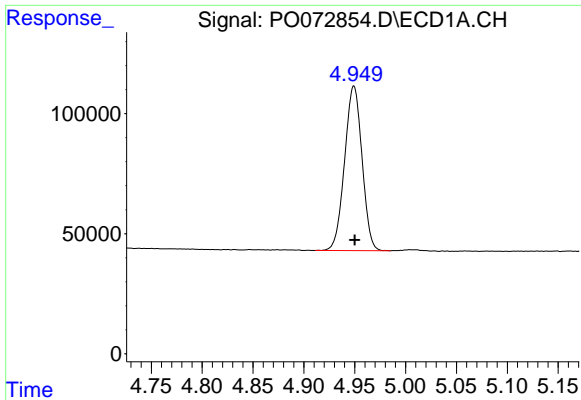
Data Path : Z:\pestpcbsrv\HPCHEM1\ECD_0\Data\PO102720\
 Data File : PO072854.D
 Signal(s) : Signal #1: ECD1A.CH Signal #2: ECD2B.CH
 Acq On : 28 Oct 2020 2:26
 Operator : DD\AJ
 Sample : I.BLK
 Misc :
 ALS Vial : 2 Sample Multiplier: 1

Instrument :
 ECD_O
 ClientSampled :

Integration File signal 1: autoint1.e
 Integration File signal 2: autoint2.e
 Quant Time: Oct 28 07:43:08 2020
 Quant Method : Z:\pestpcbsrv\HPCHEM1\ECD_0\methods\PO102620.M
 Quant Title : GC EXTRACTABLES
 QLast Update : Tue Oct 27 16:48:42 2020
 Response via : Initial Calibration
 Integrator: ChemStation 6890 Scale Mode: Small noise peaks clipped

Volume Inj. : 2 µl
 Signal #1 Phase : ZB-MR1 Signal #2 Phase: ZB-MR2
 Signal #1 Info : 30Mx0.32mmx 0.50µ Signal #2 Info : 30M x 0.32mm x 0.25µm

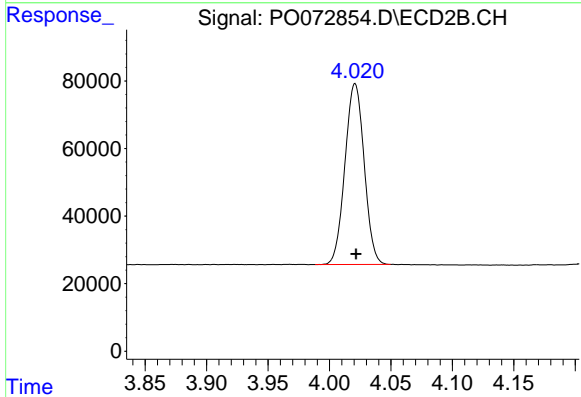




#1 Tetrachloro-m-xylene

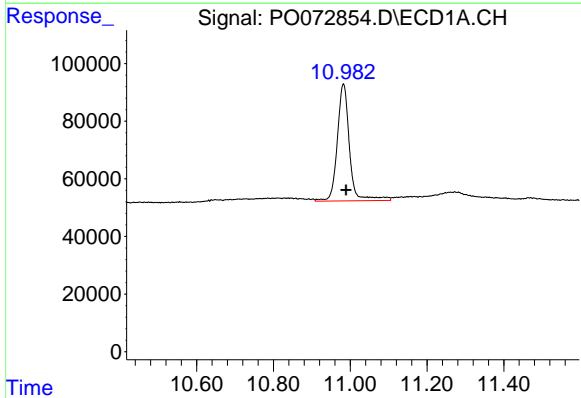
R.T.: 4.949 min
 Delta R.T.: 0.000 min
 Response: 817918
 Conc: 17.74 ng/ml

Instrument :
 ECD_O
 ClientSampled :



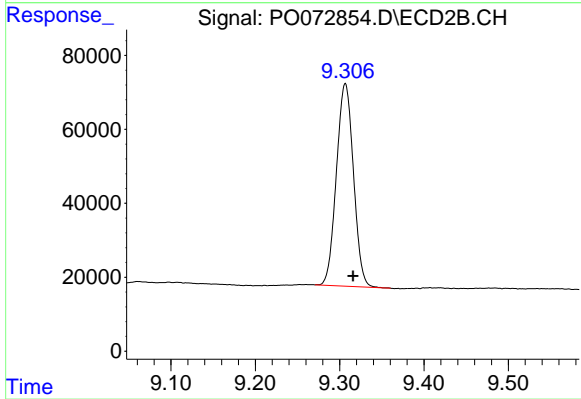
#1 Tetrachloro-m-xylene

R.T.: 4.021 min
 Delta R.T.: 0.000 min
 Response: 583171
 Conc: 16.64 ng/ml



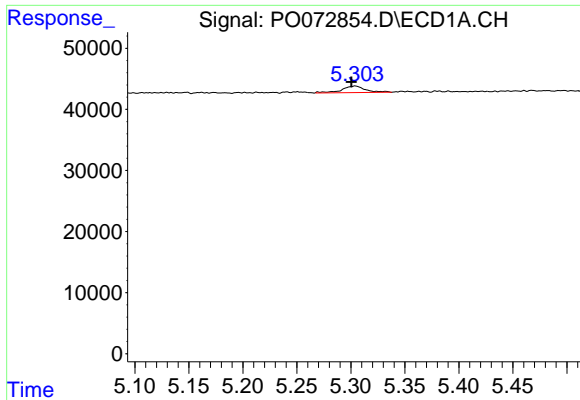
#2 Decachlorobiphenyl

R.T.: 10.982 min
 Delta R.T.: -0.007 min
 Response: 894578
 Conc: 24.21 ng/ml



#2 Decachlorobiphenyl

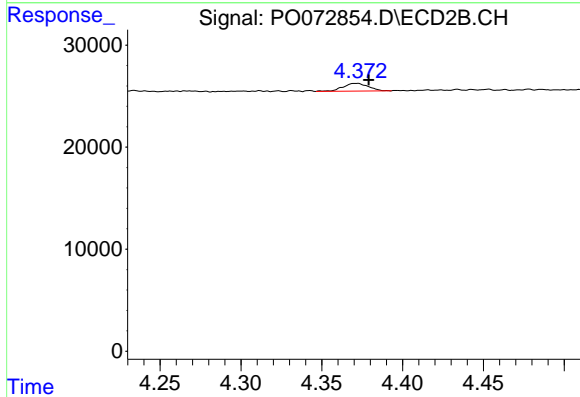
R.T.: 9.307 min
 Delta R.T.: -0.009 min
 Response: 769501
 Conc: 23.07 ng/ml



#9 AR-1221-2

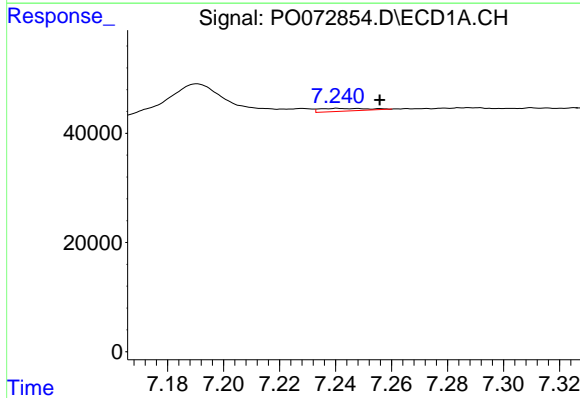
R.T.: 5.304 min
 Delta R.T.: 0.004 min
 Response: 16569
 Conc: 40.69 ng/ml

Instrument :
 ECD_O
 ClientSampleId :



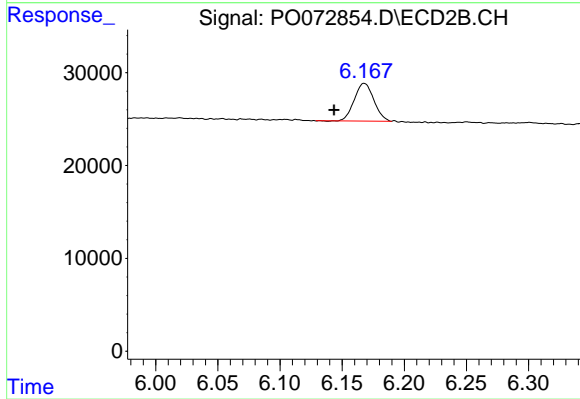
#9 AR-1221-2

R.T.: 4.372 min
 Delta R.T.: -0.007 min
 Response: 8354
 Conc: 24.60 ng/ml



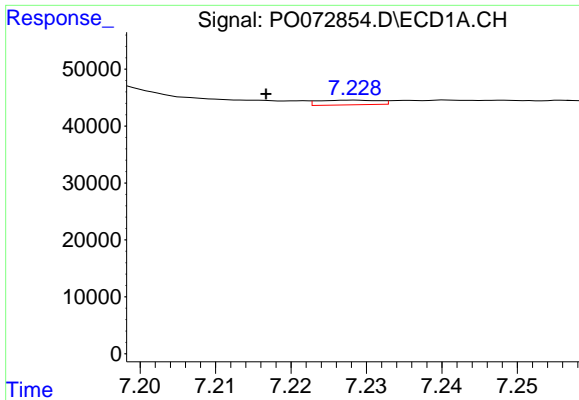
#20 AR-1242-5

R.T.: 7.241 min
 Delta R.T.: -0.015 min
 Response: 5945
 Conc: 5.80 ng/ml



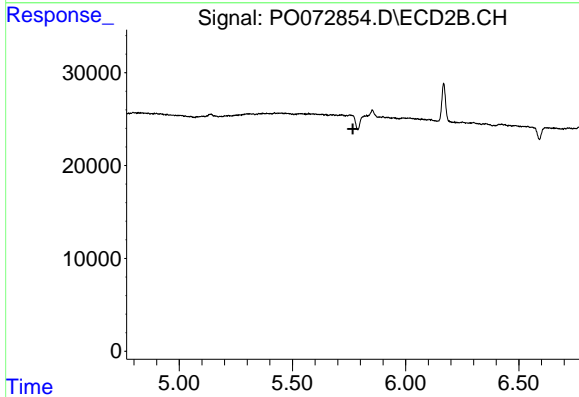
#20 AR-1242-5

R.T.: 6.168 min
 Delta R.T.: 0.024 min
 Response: 44491
 Conc: 41.46 ng/ml

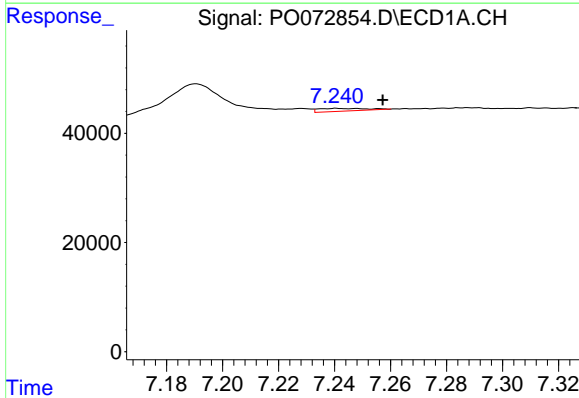


#24 AR-1248-4
 R.T.: 7.228 min
 Delta R.T.: 0.012 min
 Response: 4667
 Conc: 2.58 ng/ml

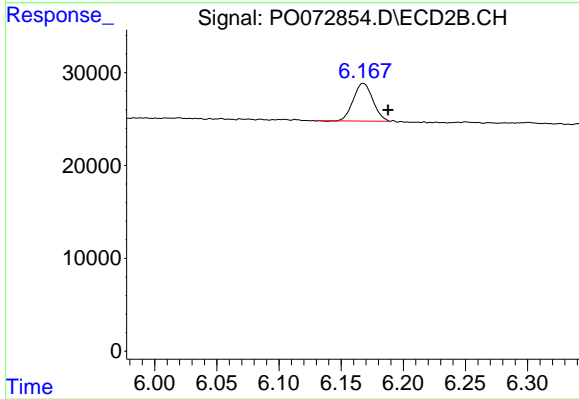
Instrument :
 ECD_O
 ClientSampleId :



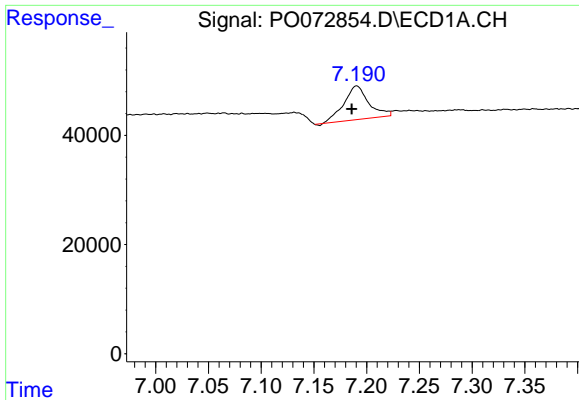
#24 AR-1248-4
 R.T.: 0.000 min
 Exp R.T. : 5.767 min
 Response: 0
 Conc: N.D.



#25 AR-1248-5
 R.T.: 7.241 min
 Delta R.T.: -0.016 min
 Response: 5945
 Conc: 3.45 ng/ml



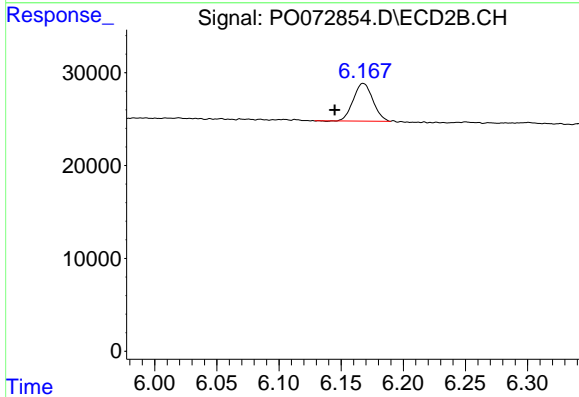
#25 AR-1248-5
 R.T.: 6.168 min
 Delta R.T.: -0.020 min
 Response: 44491
 Conc: 28.90 ng/ml



#26 AR-1254-1

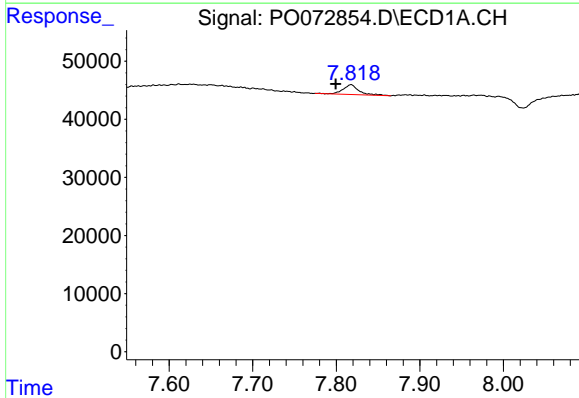
R.T.: 7.191 min
 Delta R.T.: 0.005 min
 Response: 100513
 Conc: 58.00 ng/ml

Instrument :
 ECD_O
 ClientSampleId :



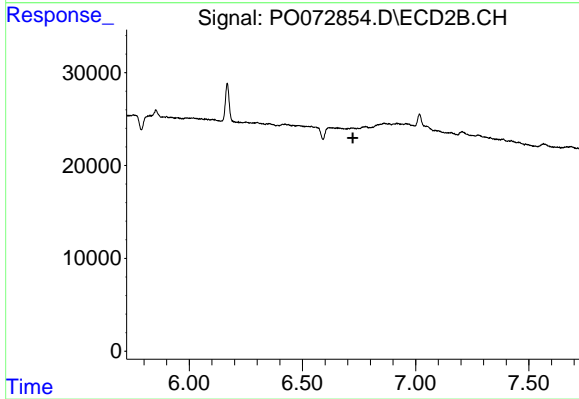
#26 AR-1254-1

R.T.: 6.168 min
 Delta R.T.: 0.023 min
 Response: 44491
 Conc: 19.77 ng/ml



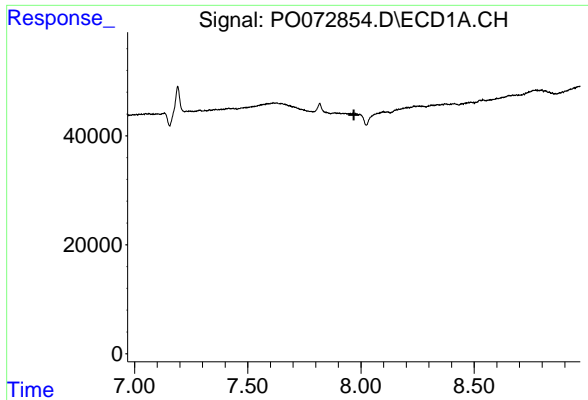
#28 AR-1254-3

R.T.: 7.818 min
 Delta R.T.: 0.018 min
 Response: 22377
 Conc: 8.28 ng/ml



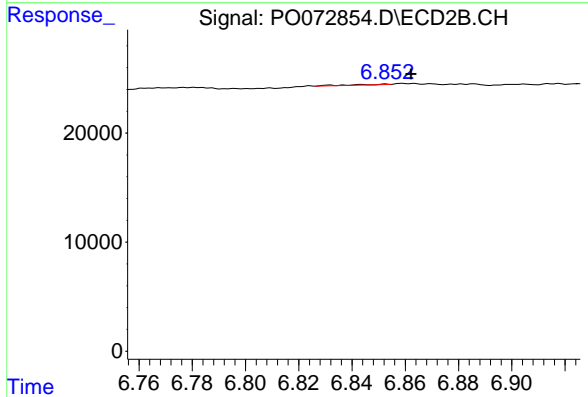
#28 AR-1254-3

R.T.: 0.000 min
 Exp R.T. : 6.723 min
 Response: 0
 Conc: N.D.

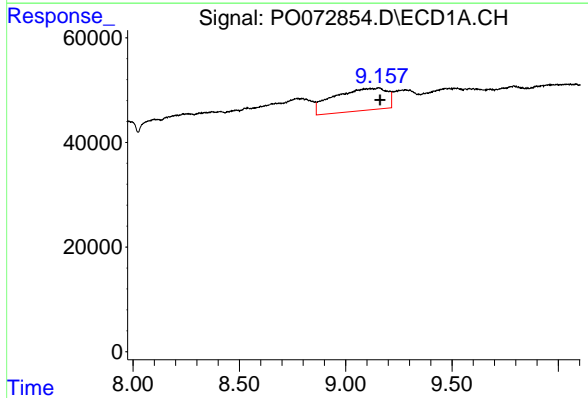


#31 AR-1260-1
 R.T.: 0.000 min
 Exp R.T.: 7.969 min
 Response: 0
 Conc: N.D.

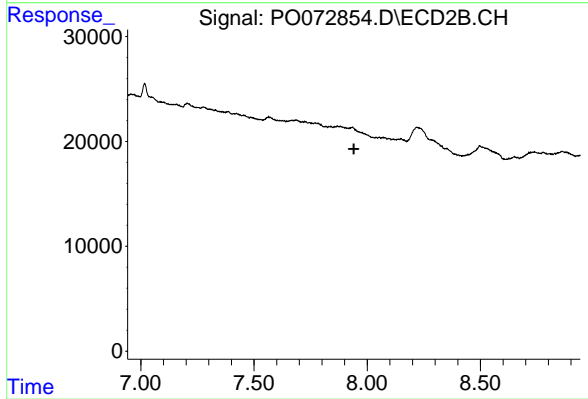
Instrument :
 ECD_O
 ClientSampleId :



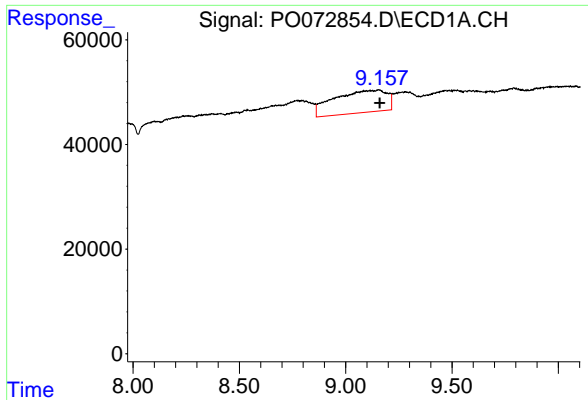
#31 AR-1260-1
 R.T.: 6.853 min
 Delta R.T.: -0.010 min
 Response: 568
 Conc: 0.29 ng/ml



#35 AR-1260-5
 R.T.: 9.155 min
 Delta R.T.: -0.007 min
 Response: 742654
 Conc: 183.09 ng/ml

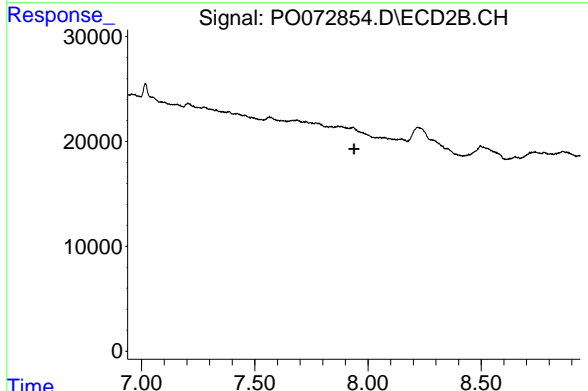


#35 AR-1260-5
 R.T.: 0.000 min
 Exp R.T.: 7.941 min
 Response: 0
 Conc: N.D.

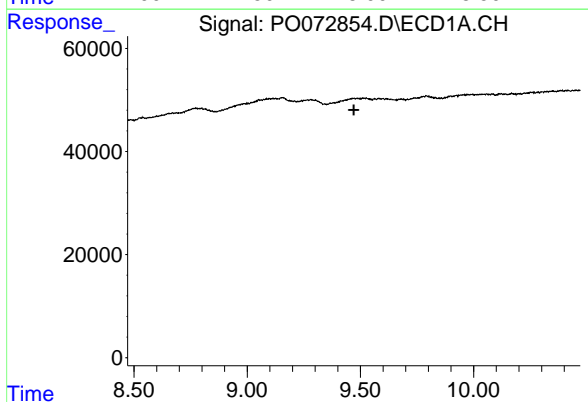


#37 AR-1262-2
 R.T.: 9.155 min
 Delta R.T.: -0.005 min
 Response: 742654
 Conc: 167.86 ng/ml

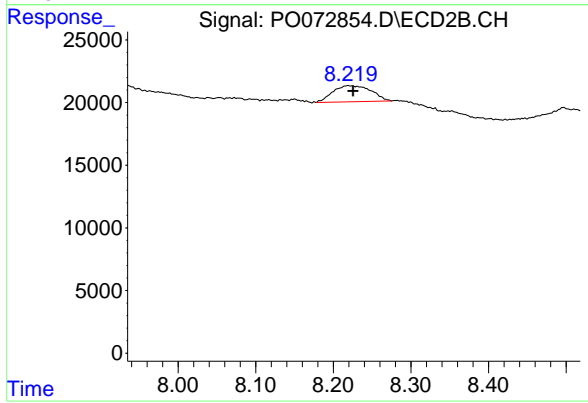
Instrument :
 ECD_O
 ClientSampleId :



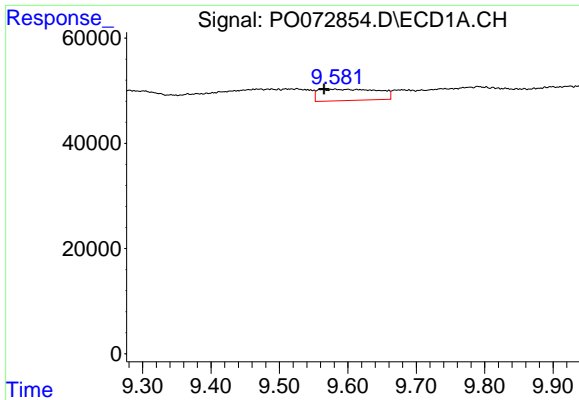
#37 AR-1262-2
 R.T.: 0.000 min
 Exp R.T. : 7.938 min
 Response: 0
 Conc: N.D.



#38 AR-1262-3
 R.T.: 0.000 min
 Exp R.T. : 9.471 min
 Response: 0
 Conc: N.D.

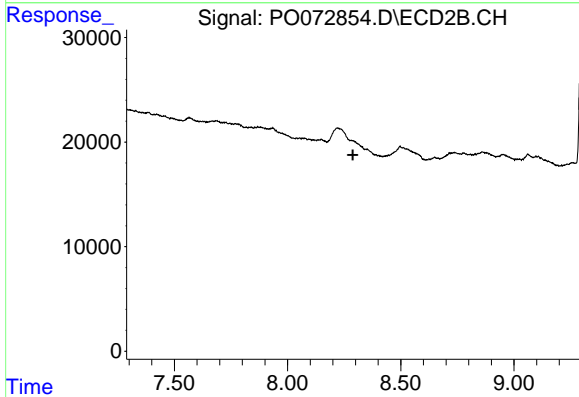


#38 AR-1262-3
 R.T.: 8.219 min
 Delta R.T.: -0.006 min
 Response: 44167
 Conc: 24.14 ng/ml

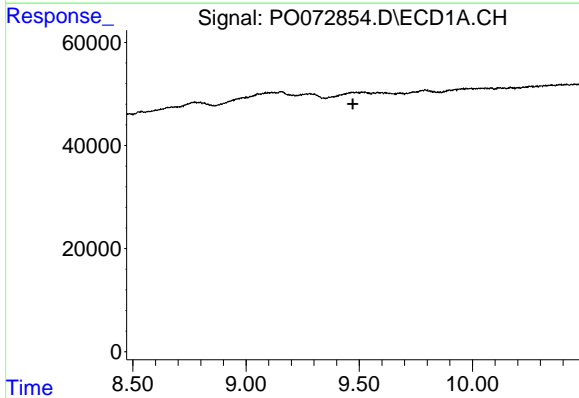


#39 AR-1262-4
 R.T.: 9.581 min
 Delta R.T.: 0.016 min
 Response: 130874
 Conc: 54.56 ng/ml

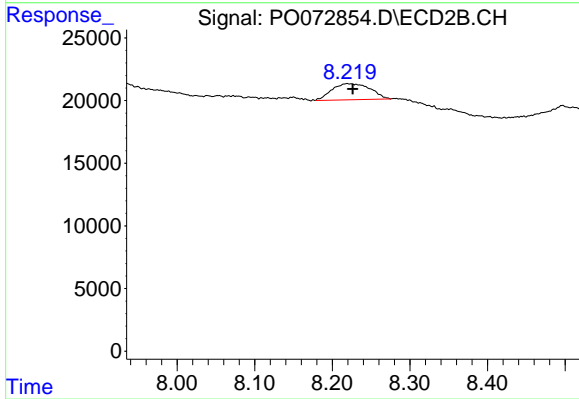
Instrument :
 ECD_O
 ClientSampled :



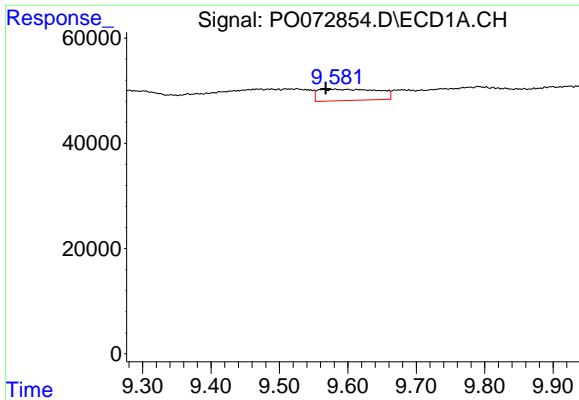
#39 AR-1262-4
 R.T.: 0.000 min
 Exp R.T. : 8.288 min
 Response: 0
 Conc: N.D.



#41 AR-1268-1
 R.T.: 0.000 min
 Exp R.T. : 9.472 min
 Response: 0
 Conc: N.D.

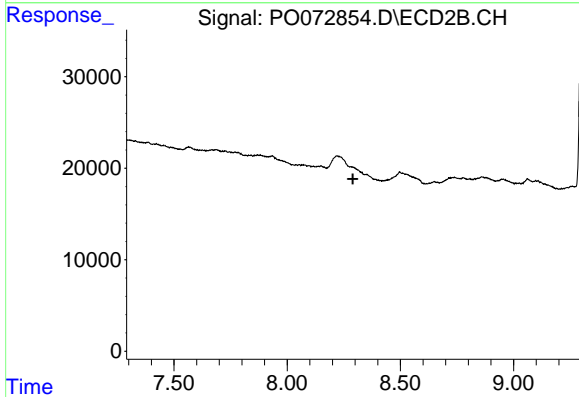


#41 AR-1268-1
 R.T.: 8.219 min
 Delta R.T.: -0.007 min
 Response: 44167
 Conc: 8.48 ng/ml

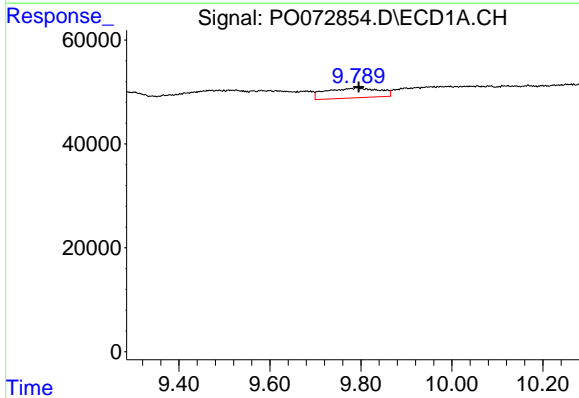


#42 AR-1268-2
 R.T.: 9.581 min
 Delta R.T.: 0.013 min
 Response: 130874
 Conc: 25.85 ng/ml

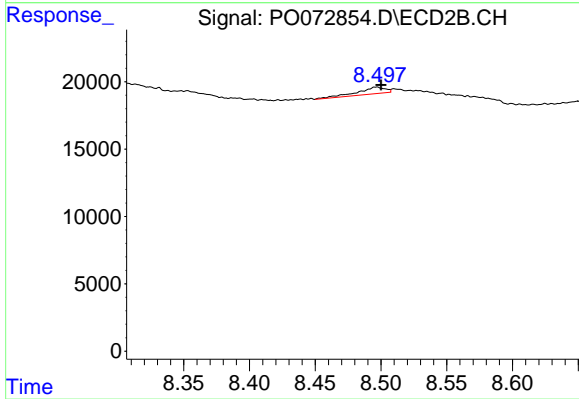
Instrument :
 ECD_O
 ClientSampleId :



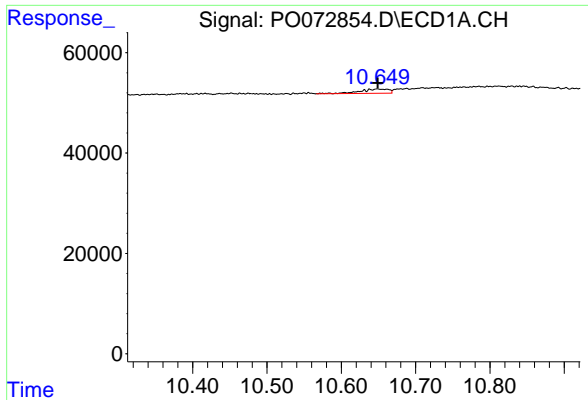
#42 AR-1268-2
 R.T.: 0.000 min
 Exp R.T. : 8.291 min
 Response: 0
 Conc: N.D.



#43 AR-1268-3
 R.T.: 9.791 min
 Delta R.T.: -0.004 min
 Response: 154887
 Conc: 35.71 ng/ml



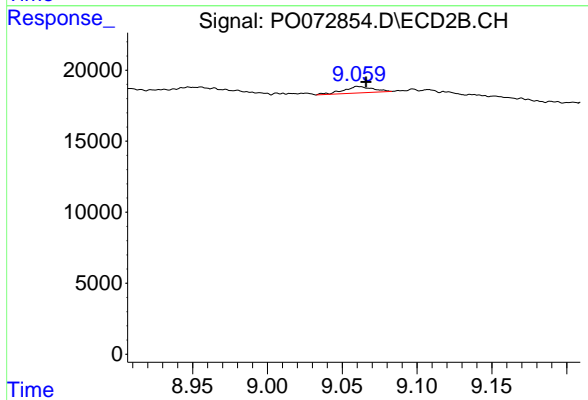
#43 AR-1268-3
 R.T.: 8.497 min
 Delta R.T.: -0.003 min
 Response: 7332
 Conc: 1.74 ng/ml



#45 AR-1268-5

R.T.: 10.649 min
Delta R.T.: 0.000 min
Response: 23335
Conc: 1.68 ng/ml

Instrument :
ECD_O
ClientSampleId :



#45 AR-1268-5

R.T.: 9.060 min
Delta R.T.: -0.006 min
Response: 6079
Conc: 0.47 ng/ml