

Data Path : Z:\pestpcbsrv\HPCHEM1\ECD\_0\Data\PO102720\  
 Data File : PO072793.D  
 Signal(s) : Signal #1: ECD1A.CH Signal #2: ECD2B.CH  
 Acq On : 27 Oct 2020 8:27  
 Operator : DD\AJ  
 Sample : I.BLK  
 Misc :  
 ALS Vial : 2 Sample Multiplier: 1

Instrument :  
 ECD\_0  
 ClientSampleId :  
 I.BLK

Integration File signal 1: autoint1.e  
 Integration File signal 2: autoint2.e  
 Quant Time: Oct 28 07:25:50 2020  
 Quant Method : Z:\pestpcbsrv\HPCHEM1\ECD\_0\methods\PO102620.M  
 Quant Title : GC EXTRACTABLES  
 QLast Update : Tue Oct 27 16:48:42 2020  
 Response via : Initial Calibration  
 Integrator: ChemStation 6890 Scale Mode: Small noise peaks clipped

Volume Inj. : 2 µl  
 Signal #1 Phase : ZB-MR1 Signal #2 Phase: ZB-MR2  
 Signal #1 Info : 30Mx0.32mmx 0.50µ Signal #2 Info : 30M x 0.32mm x 0.25µm

Compound	RT#1	RT#2	Resp#1	Resp#2	ng/ml	ng/ml
-----						
System Monitoring Compounds						
1) SA Tetrachlo...	4.950	4.020	979550	722377	21.245	20.611
2) SA Decachlor...	10.987	9.311	935218	852758	25.314	25.571

Target Compounds

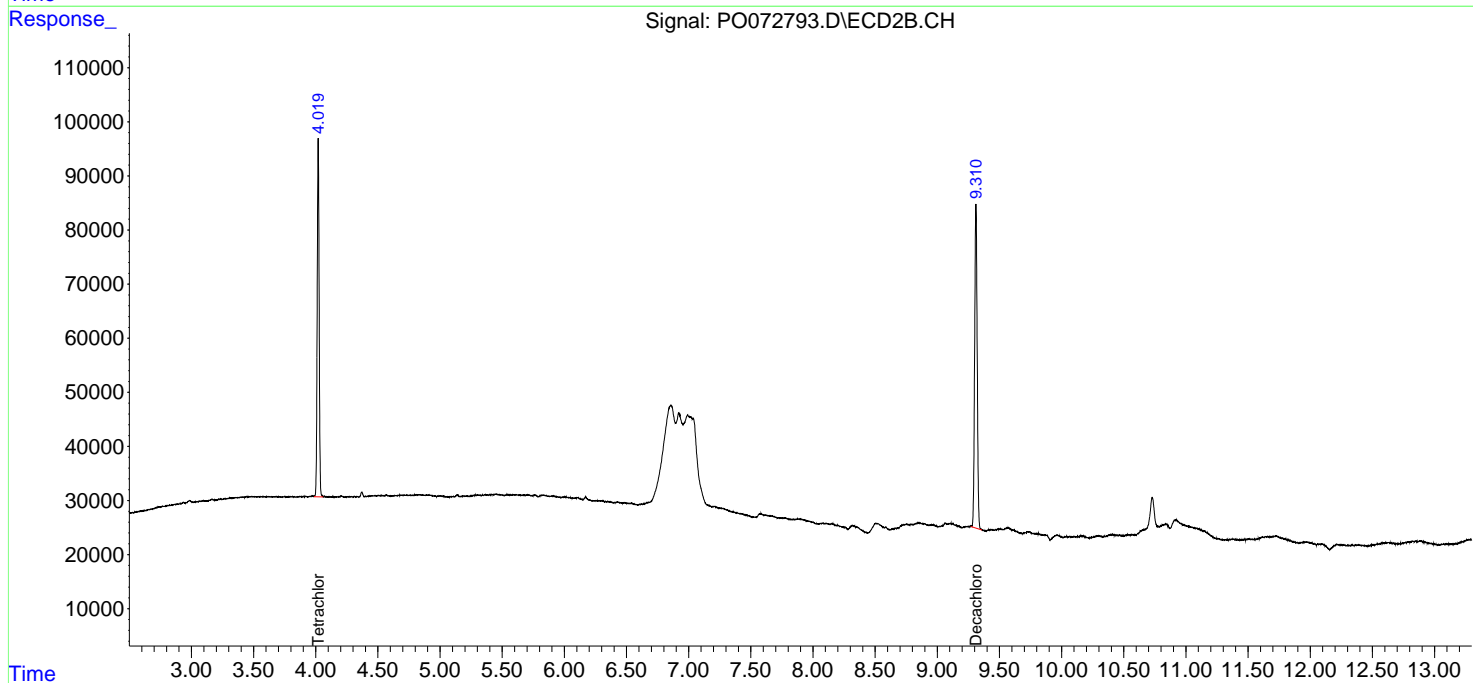
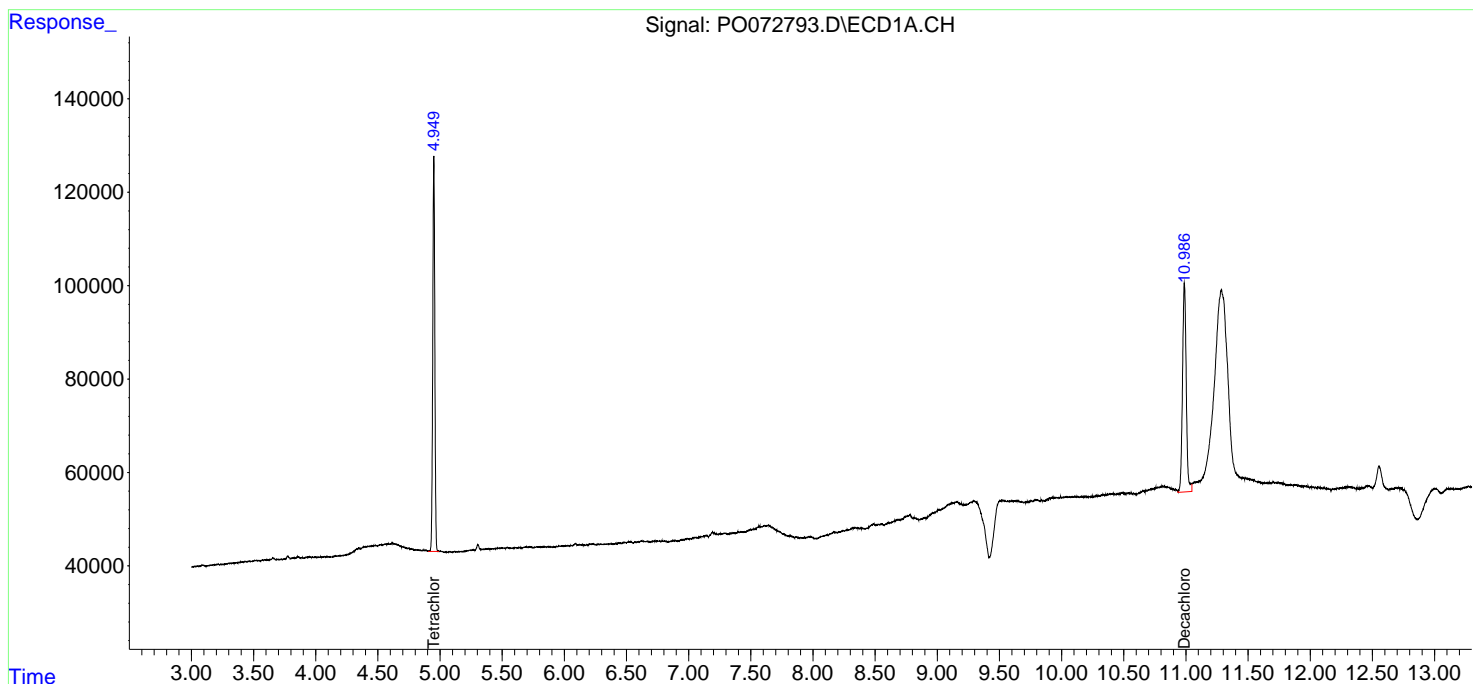
(f)=RT Delta > 1/2 Window (#)=Amounts differ by > 25% (m)=manual int.

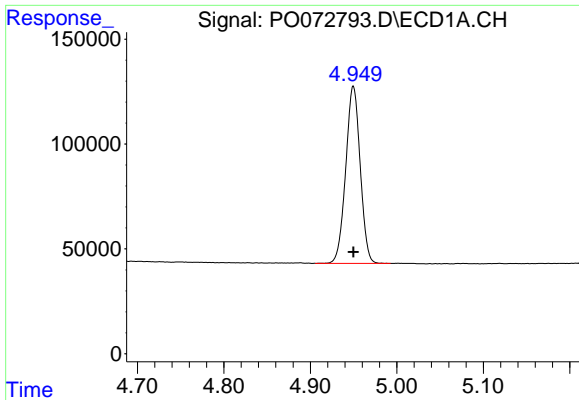
Data Path : Z:\pestpcbsrv\HPCHEM1\ECD\_0\Data\PO102720\  
 Data File : PO072793.D  
 Signal(s) : Signal #1: ECD1A.CH Signal #2: ECD2B.CH  
 Acq On : 27 Oct 2020 8:27  
 Operator : DD\AJ  
 Sample : I.BLK  
 Misc :  
 ALS Vial : 2 Sample Multiplier: 1

Instrument :  
 ECD\_O  
 ClientSampleId :  
 I.BLK

Integration File signal 1: autoint1.e  
 Integration File signal 2: autoint2.e  
 Quant Time: Oct 28 07:25:50 2020  
 Quant Method : Z:\pestpcbsrv\HPCHEM1\ECD\_0\methods\PO102620.M  
 Quant Title : GC EXTRACTABLES  
 QLast Update : Tue Oct 27 16:48:42 2020  
 Response via : Initial Calibration  
 Integrator: ChemStation 6890 Scale Mode: Small noise peaks clipped

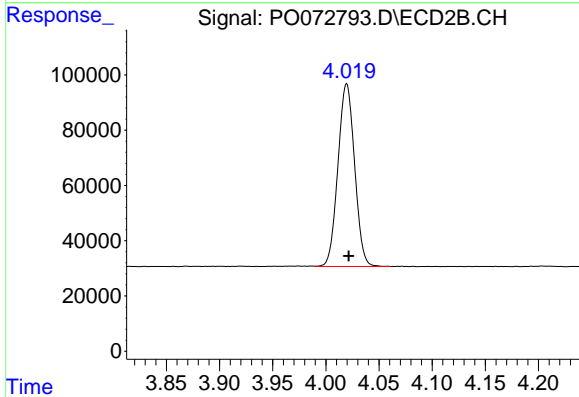
Volume Inj. : 2 µl  
 Signal #1 Phase : ZB-MR1 Signal #2 Phase: ZB-MR2  
 Signal #1 Info : 30Mx0.32mmx 0.50µ Signal #2 Info : 30M x 0.32mm x 0.25µm



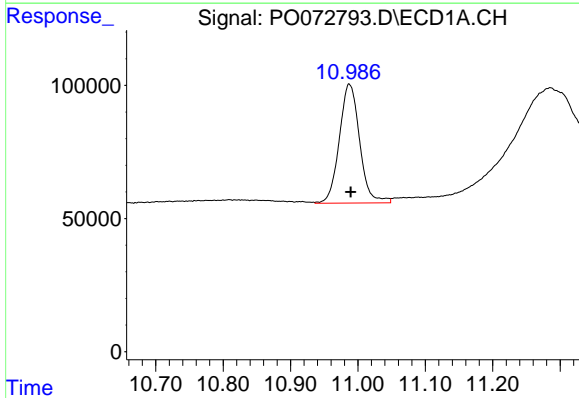


#1 Tetrachloro-m-xylene  
 R.T.: 4.950 min  
 Delta R.T.: 0.000 min  
 Response: 979550  
 Conc: 21.25 ng/ml

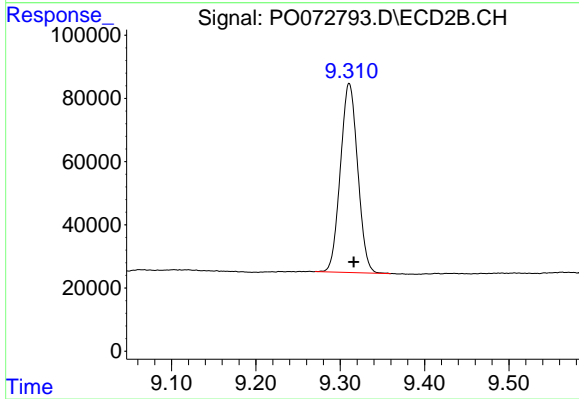
Instrument :  
 ECD\_O  
 ClientSampled :  
 I.BLK



#1 Tetrachloro-m-xylene  
 R.T.: 4.020 min  
 Delta R.T.: -0.002 min  
 Response: 722377  
 Conc: 20.61 ng/ml



#2 Decachlorobiphenyl  
 R.T.: 10.987 min  
 Delta R.T.: -0.002 min  
 Response: 935218  
 Conc: 25.31 ng/ml



#2 Decachlorobiphenyl  
 R.T.: 9.311 min  
 Delta R.T.: -0.005 min  
 Response: 852758  
 Conc: 25.57 ng/ml