

Data Path : Z:\pestpcbsrv\HPCHEM1\ECD_0\Data\PO102723\
 Data File : PO099074.D
 Signal(s) : Signal #1: ECD1A.ch Signal #2: ECD2B.ch
 Acq On : 28 Oct 2023 04:59
 Operator : YP/AJ
 Sample : AR1248CCC500
 Misc :
 ALS Vial : 5 Sample Multiplier: 1

Instrument :
 ECD_0
 ClientSampleId :

Integration File signal 1: autoint1.e
 Integration File signal 2: autoint2.e
 Quant Time: Oct 28 05:09:40 2023
 Quant Method : Z:\pestpcbsrv\HPCHEM1\ECD_0\methods\PO102523.M
 Quant Title : GC EXTRACTABLES
 QLast Update : Wed Oct 25 06:04:36 2023
 Response via : Initial Calibration
 Integrator: ChemStation

Volume Inj. : 2 µl
 Signal #1 Phase : ZB-MR1 Signal #2 Phase: ZB-MR2
 Signal #1 Info : 30Mx0.32mmx 0.50µ Signal #2 Info : 30M x 0.32mm x 0.25µm

Compound	RT#1	RT#2	Resp#1	Resp#2	ng/ml	ng/ml

System Monitoring Compounds						
1) SA Tetrachlo...	4.475	3.629	94571753	37691244	47.862	52.372
2) SA Decachlor...	10.277	8.626	58932630	26941527	52.021	50.214
Target Compounds						
3) L1 AR-1016-1	5.648	4.710	17416762	7722949	316.287	344.868
4) L1 AR-1016-2	5.671	4.728	21067834	8002290	254.781	256.019
5) L1 AR-1016-3	5.733	4.905	10450045	5190472	203.023	306.534 #
6) L1 AR-1016-4	5.831	4.946	11311313	10618685	278.306	734.464 #
7) L1 AR-1016-5	6.128	5.159	27529646	13904893	648.624	744.299
8) L2 AR-1221-1	4.675	3.841	801515	127964	32.282	13.774 #
9) L2 AR-1221-2	4.782	3.929	2496785	592707	134.967	91.415 #
10) L2 AR-1221-3	4.847	4.003	2022254	685820	37.327	33.906
11) L3 AR-1232-1	4.847	4.003	2022254	685820	44.204	40.009
12) L3 AR-1232-2	5.379	4.728	8097006	8002290	342.883	522.343 #
13) L3 AR-1232-3	5.671	4.905	21067834	5190472	533.468	648.689
14) L3 AR-1232-4	5.831	4.987	11311313	11331628	592.870	1472.831 #
15) L3 AR-1232-5	5.923	5.159	25454819	13904893	1528.068	1634.797
16) L4 AR-1242-1	5.648	4.710	17416762	7722949	402.307	439.556
17) L4 AR-1242-2	5.671	4.728	21067834	8002290	328.942	330.213
18) L4 AR-1242-3	5.733	4.905	10450045	5190472	259.785	404.851 #
19) L4 AR-1242-4	5.831	4.987	11311313	11331628	361.466	804.989 #
20) L4 AR-1242-5	6.572	5.510	28599044	17671309	927.077	1057.454
21) L5 AR-1248-1	5.648	4.710	17416762	7722949	512.670	557.212
22) L5 AR-1248-2	5.923	4.946	25454819	10618685	486.398	534.580
23) L5 AR-1248-3	6.128	4.987	27529646	11331628	483.165	543.391
24) L5 AR-1248-4	6.533	5.159	28232009	13904893	517.718	565.619
25) L5 AR-1248-5	6.572	5.551	28599044	12751621	503.450	587.134
26) L6 AR-1254-1	6.506	5.510	22141863	17671309	336.364	498.720 #
27) L6 AR-1254-2	6.728	5.658	27827442	5978686	289.060	186.925 #
28) L6 AR-1254-3	7.093	6.062	15183180	8341045	169.866	170.617
29) L6 AR-1254-4	7.379	6.291	9044422	5179160	165.094	197.626
30) L6 AR-1254-5	7.799	6.708	2371344	1604092	35.217	38.052
31) L7 AR-1260-1	7.258	6.207	1476363	4112201	20.602	116.574 #
32) L7 AR-1260-2	7.513	6.380	2256171	766315	28.596	19.117 #
33) L7 AR-1260-3	7.882	6.532	32037	865045	0.587	22.877 #
34) L7 AR-1260-4	8.088	7.001	1007546	112983	16.080	3.910 #
35) L7 AR-1260-5	8.425	7.245	686040	248527	6.411	4.130 #
36) L8 AR-1262-1	7.882	6.776	32037	203175	0.354	4.330 #
37) L8 AR-1262-2	8.425	7.001	686040	112983	5.146	2.721 #
38) L8 AR-1262-3	8.755	7.526	181773	149073	1.848	4.666 #
39) L8 AR-1262-4	8.839	7.592	146570	238453	1.830	4.337 #
40) L8 AR-1262-5	9.508	8.090	93905	96041	2.137	3.824 #
41) L9 AR-1268-1	8.755	7.526	181773	149073	1.055	1.671 #

Data Path : Z:\pestpcbsrv\HPCHEM1\ECD_0\Data\PO102723\
 Data File : PO099074.D
 Signal(s) : Signal #1: ECD1A.ch Signal #2: ECD2B.ch
 Acq On : 28 Oct 2023 04:59
 Operator : YP/AJ
 Sample : AR1248CCC500
 Misc :
 ALS Vial : 5 Sample Multiplier: 1

Instrument :
 ECD_0
 ClientSampleId :

Integration File signal 1: autoint1.e
 Integration File signal 2: autoint2.e
 Quant Time: Oct 28 05:09:40 2023
 Quant Method : Z:\pestpcbsrv\HPCHEM1\ECD_0\methods\PO102523.M
 Quant Title : GC EXTRACTABLES
 QLast Update : Wed Oct 25 06:04:36 2023
 Response via : Initial Calibration
 Integrator: ChemStation

Volume Inj. : 2 µl
 Signal #1 Phase : ZB-MR1 Signal #2 Phase: ZB-MR2
 Signal #1 Info : 30Mx0.32mmx 0.50µ Signal #2 Info : 30M x 0.32mm x 0.25µm

	Compound	RT#1	RT#2	Resp#1	Resp#2	ng/ml	ng/ml
42)	L9 AR-1268-2	8.839	7.592	146570	238453	0.935	3.020 #
43)	L9 AR-1268-3	9.076	7.803	21014	59486	0.150	0.845 #
44)	L9 AR-1268-4	9.508	8.090	93905	96041	1.873	3.485 #
45)	L9 AR-1268-5	9.928	8.377	370503	183895	0.905	0.965

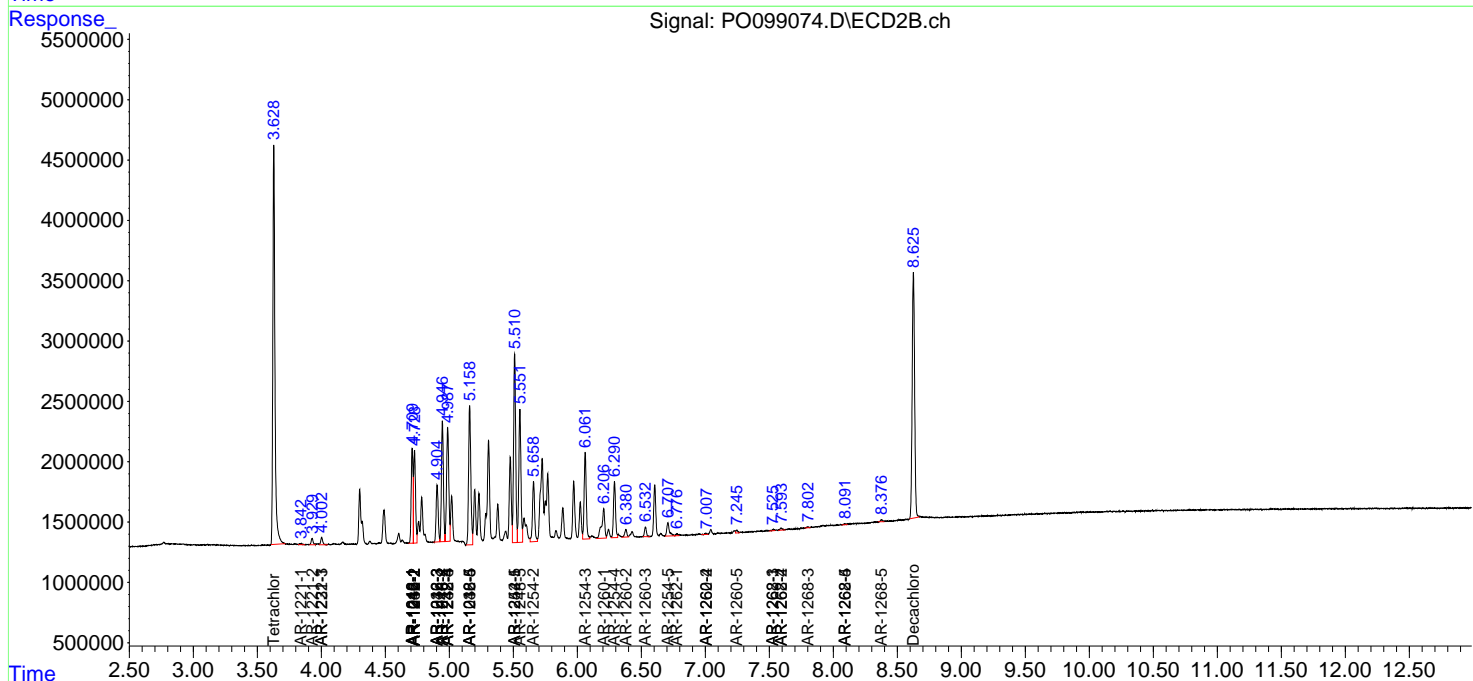
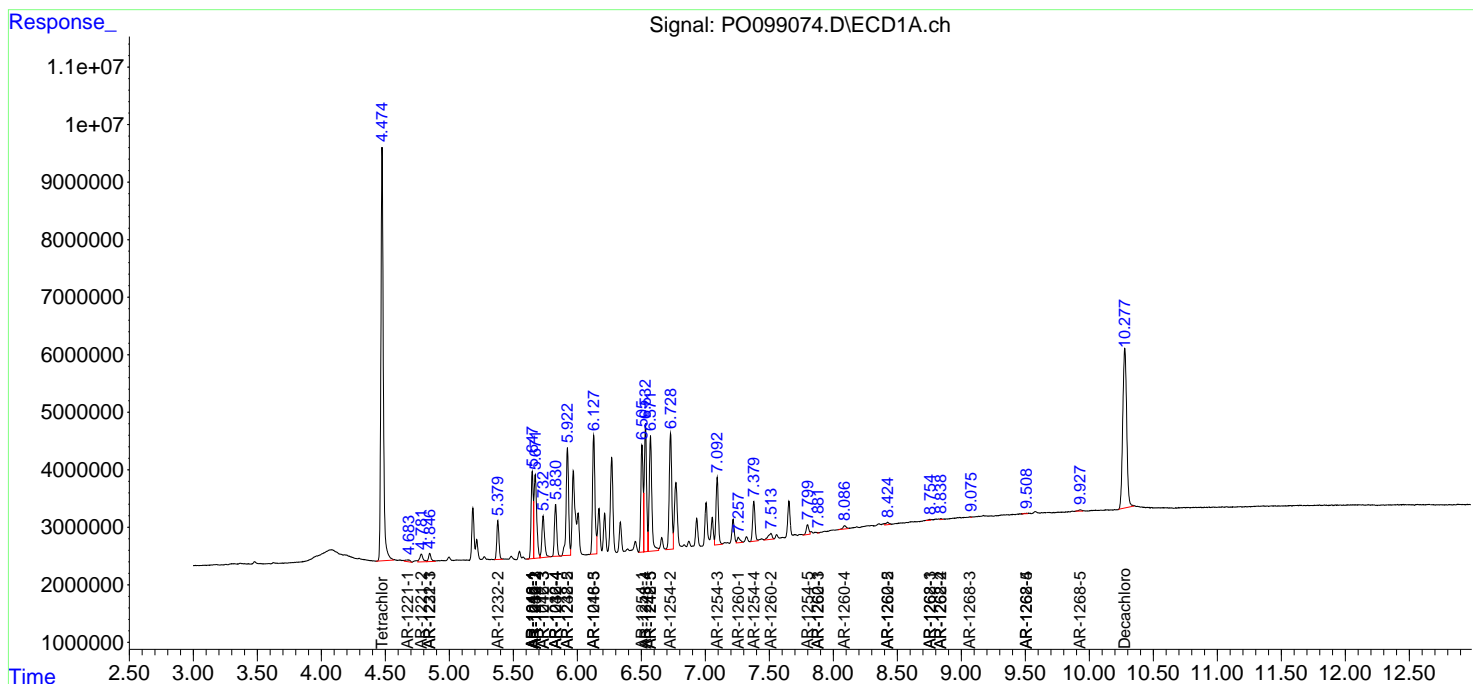
(f)=RT Delta > 1/2 Window (#)=Amounts differ by > 25% (m)=manual int.

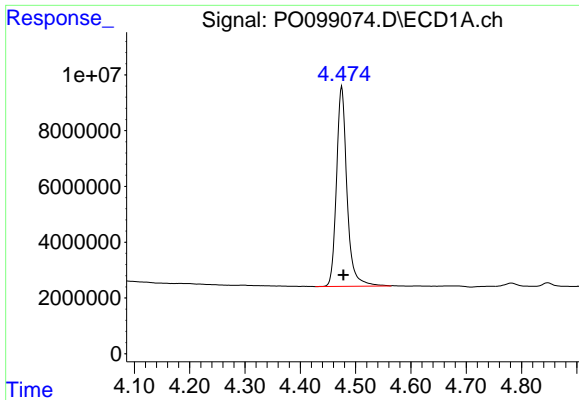
Data Path : Z:\pestpcbsrv\HPCHEM1\ECD_O\Data\PO102723\
 Data File : PO099074.D
 Signal(s) : Signal #1: ECD1A.ch Signal #2: ECD2B.ch
 Acq On : 28 Oct 2023 04:59
 Operator : YP/AJ
 Sample : AR1248CCC500
 Misc :
 ALS Vial : 5 Sample Multiplier: 1

Instrument :
 ECD_O
 ClientSampleId :

Integration File signal 1: autoint1.e
 Integration File signal 2: autoint2.e
 Quant Time: Oct 28 05:09:40 2023
 Quant Method : Z:\pestpcbsrv\HPCHEM1\ECD_O\methods\PO102523.M
 Quant Title : GC EXTRACTABLES
 QLast Update : Wed Oct 25 06:04:36 2023
 Response via : Initial Calibration
 Integrator: ChemStation

Volume Inj. : 2 µl
 Signal #1 Phase : ZB-MR1 Signal #2 Phase: ZB-MR2
 Signal #1 Info : 30Mx0.32mmx 0.50µ Signal #2 Info : 30M x 0.32mm x 0.25µm

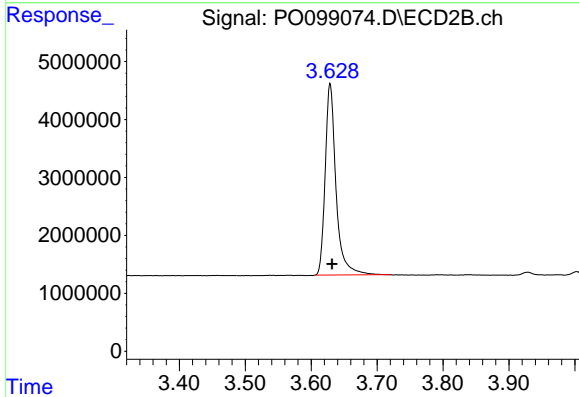




#1 Tetrachloro-m-xylene

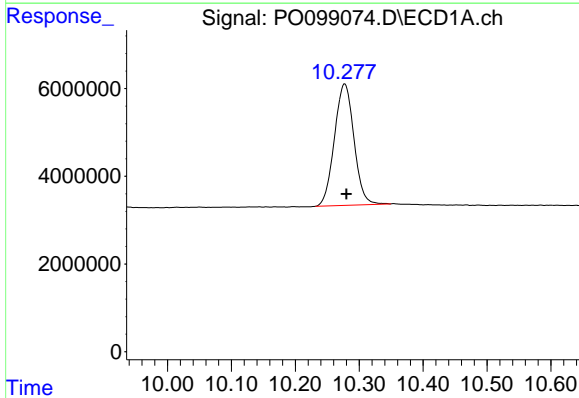
R.T.: 4.475 min
 Delta R.T.: -0.003 min
 Response: 94571753
 Conc: 47.86 ng/ml

Instrument :
 ECD_O
 ClientSampleId :



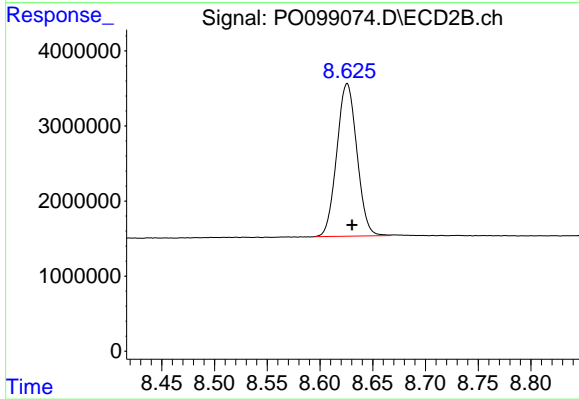
#1 Tetrachloro-m-xylene

R.T.: 3.629 min
 Delta R.T.: -0.003 min
 Response: 37691244
 Conc: 52.37 ng/ml



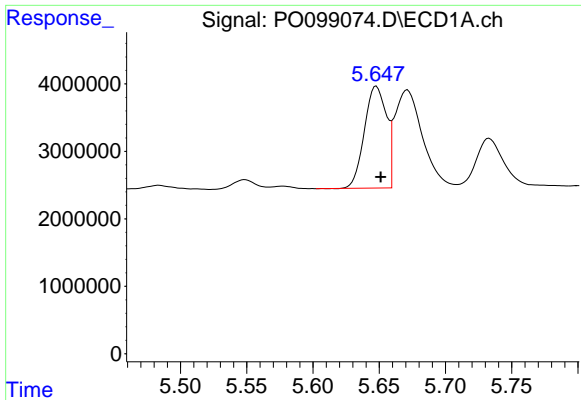
#2 Decachlorobiphenyl

R.T.: 10.277 min
 Delta R.T.: -0.003 min
 Response: 58932630
 Conc: 52.02 ng/ml



#2 Decachlorobiphenyl

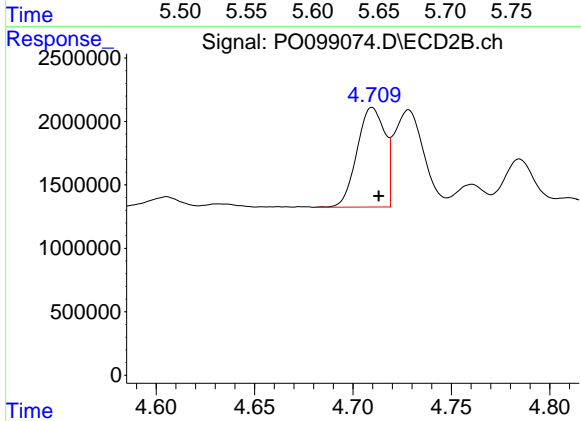
R.T.: 8.626 min
 Delta R.T.: -0.004 min
 Response: 26941527
 Conc: 50.21 ng/ml



#3 AR-1016-1

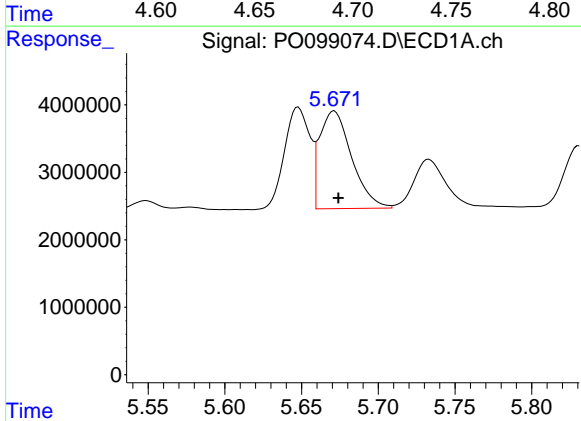
R.T.: 5.648 min
 Delta R.T.: -0.003 min
 Response: 17416762
 Conc: 316.29 ng/ml

Instrument :
 ECD_O
 ClientSampleId :



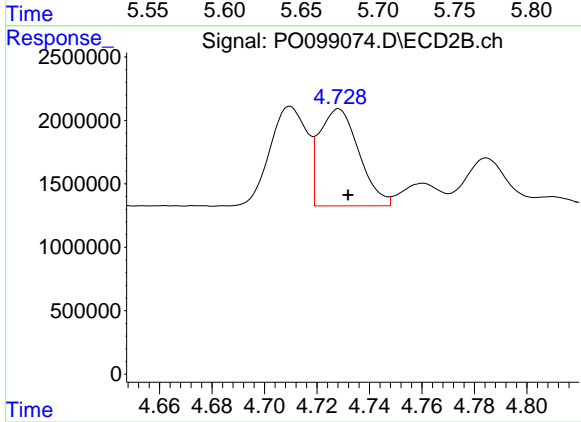
#3 AR-1016-1

R.T.: 4.710 min
 Delta R.T.: -0.003 min
 Response: 7722949
 Conc: 344.87 ng/ml



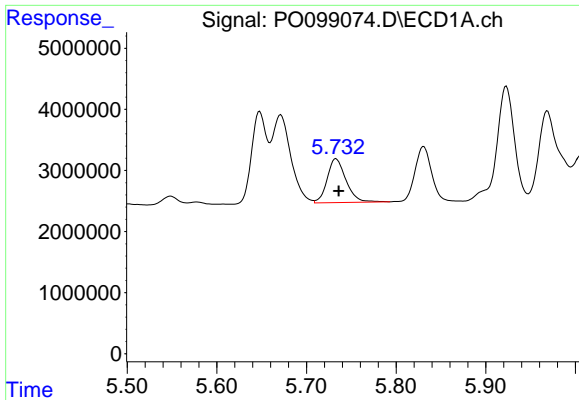
#4 AR-1016-2

R.T.: 5.671 min
 Delta R.T.: -0.003 min
 Response: 21067834
 Conc: 254.78 ng/ml



#4 AR-1016-2

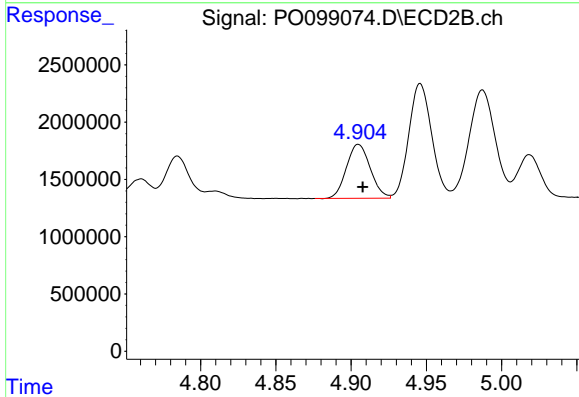
R.T.: 4.728 min
 Delta R.T.: -0.004 min
 Response: 8002290
 Conc: 256.02 ng/ml



#5 AR-1016-3

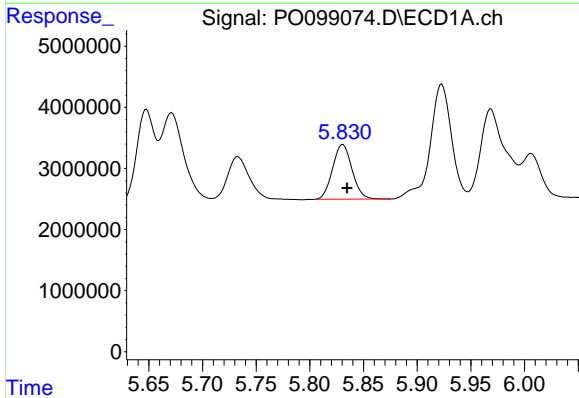
R.T.: 5.733 min
 Delta R.T.: -0.003 min
 Response: 10450045
 Conc: 203.02 ng/ml

Instrument :
 ECD_O
 ClientSampleId :



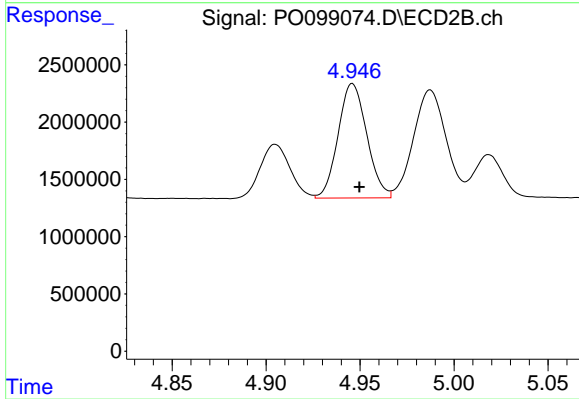
#5 AR-1016-3

R.T.: 4.905 min
 Delta R.T.: -0.003 min
 Response: 5190472
 Conc: 306.53 ng/ml



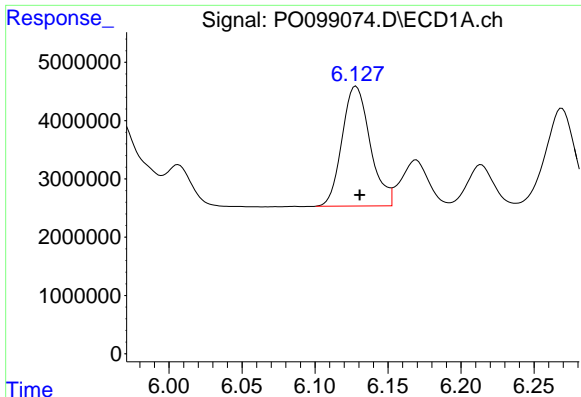
#6 AR-1016-4

R.T.: 5.831 min
 Delta R.T.: -0.004 min
 Response: 11311313
 Conc: 278.31 ng/ml



#6 AR-1016-4

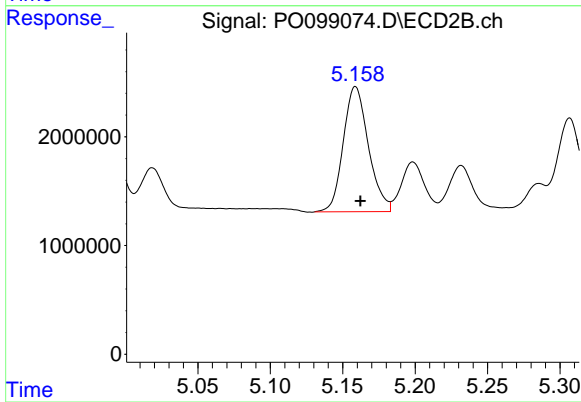
R.T.: 4.946 min
 Delta R.T.: -0.004 min
 Response: 10618685
 Conc: 734.46 ng/ml



#7 AR-1016-5

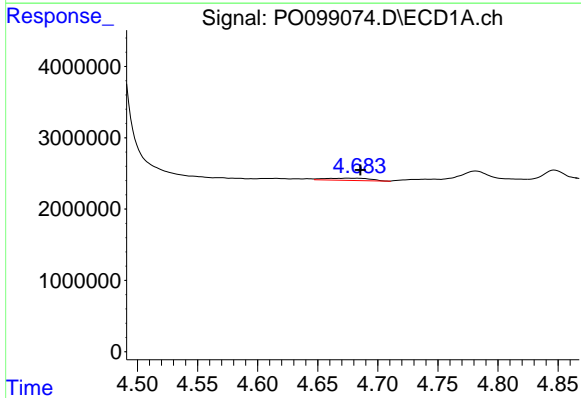
R.T.: 6.128 min
 Delta R.T.: -0.002 min
 Response: 27529646
 Conc: 648.62 ng/ml

Instrument :
 ECD_O
 ClientSampleId :



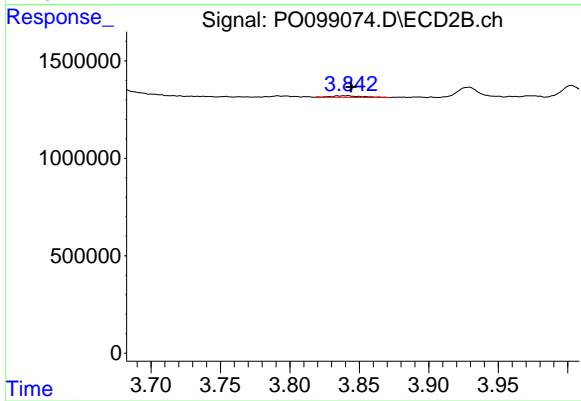
#7 AR-1016-5

R.T.: 5.159 min
 Delta R.T.: -0.003 min
 Response: 13904893
 Conc: 744.30 ng/ml



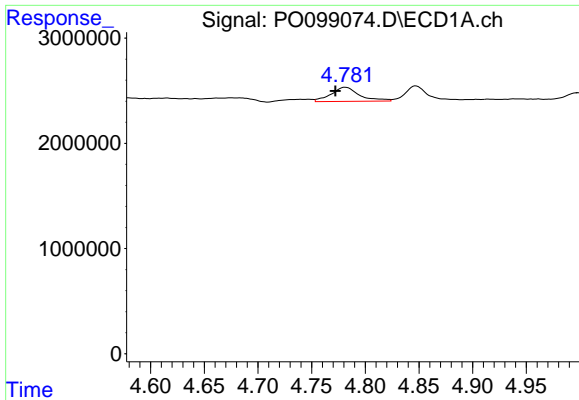
#8 AR-1221-1

R.T.: 4.675 min
 Delta R.T.: -0.011 min
 Response: 801515
 Conc: 32.28 ng/ml



#8 AR-1221-1

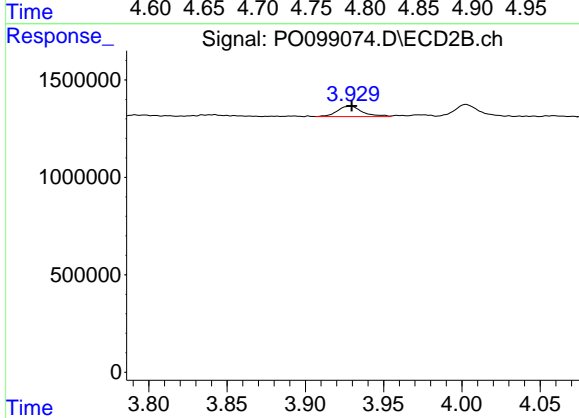
R.T.: 3.841 min
 Delta R.T.: -0.003 min
 Response: 127964
 Conc: 13.77 ng/ml



#9 AR-1221-2

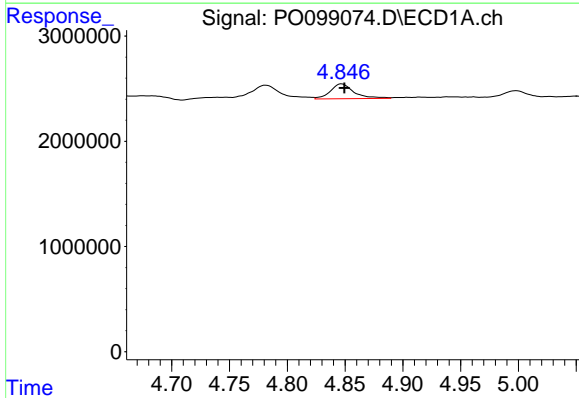
R.T.: 4.782 min
 Delta R.T.: 0.009 min
 Response: 2496785
 Conc: 134.97 ng/ml

Instrument :
 ECD_O
 ClientSampleId :



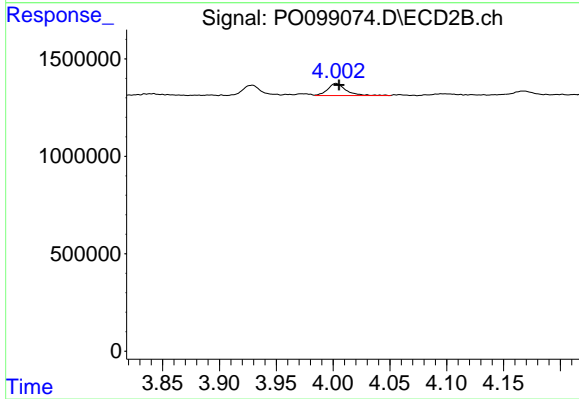
#9 AR-1221-2

R.T.: 3.929 min
 Delta R.T.: 0.000 min
 Response: 592707
 Conc: 91.41 ng/ml



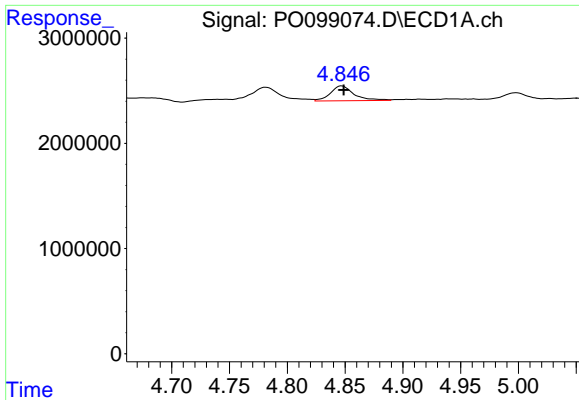
#10 AR-1221-3

R.T.: 4.847 min
 Delta R.T.: -0.002 min
 Response: 2022254
 Conc: 37.33 ng/ml



#10 AR-1221-3

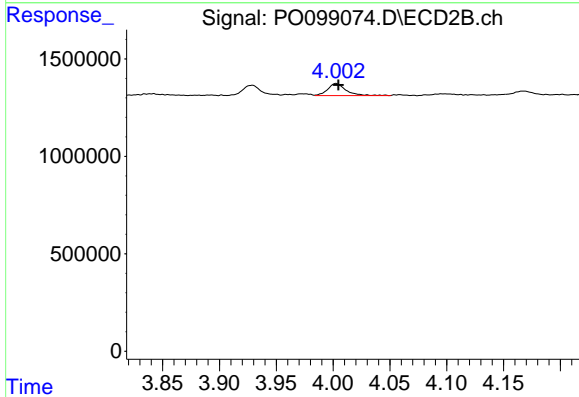
R.T.: 4.003 min
 Delta R.T.: -0.003 min
 Response: 685820
 Conc: 33.91 ng/ml



#11 AR-1232-1

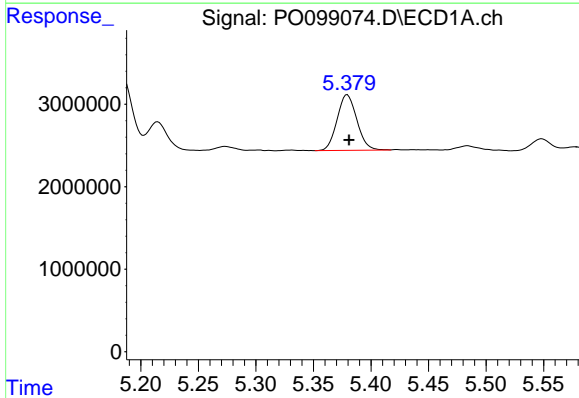
R.T.: 4.847 min
 Delta R.T.: -0.002 min
 Response: 2022254
 Conc: 44.20 ng/ml

Instrument :
 ECD_O
 ClientSampleId :



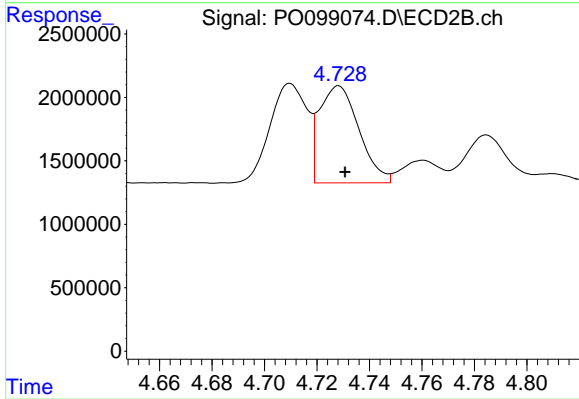
#11 AR-1232-1

R.T.: 4.003 min
 Delta R.T.: -0.002 min
 Response: 685820
 Conc: 40.01 ng/ml



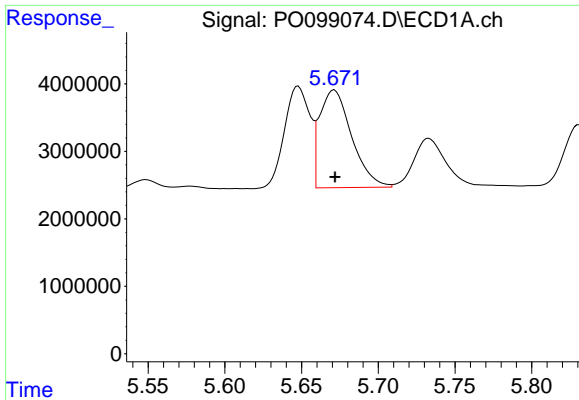
#12 AR-1232-2

R.T.: 5.379 min
 Delta R.T.: -0.002 min
 Response: 8097006
 Conc: 342.88 ng/ml



#12 AR-1232-2

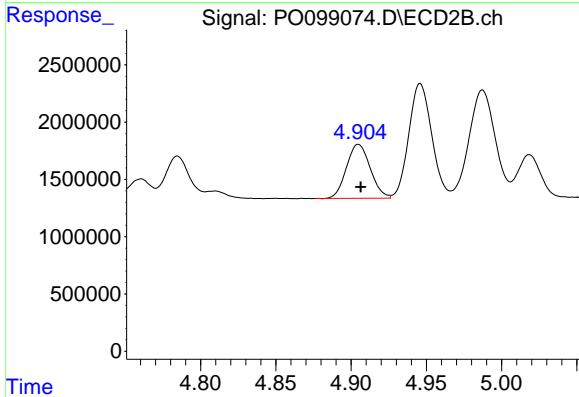
R.T.: 4.728 min
 Delta R.T.: -0.003 min
 Response: 8002290
 Conc: 522.34 ng/ml



#13 AR-1232-3

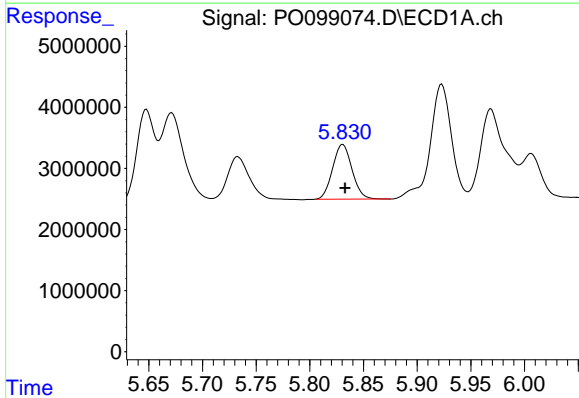
R.T.: 5.671 min
 Delta R.T.: 0.000 min
 Response: 21067834
 Conc: 533.47 ng/ml

Instrument :
 ECD_O
 ClientSampleId :



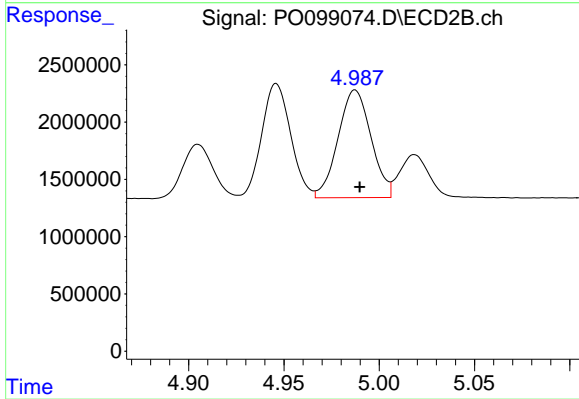
#13 AR-1232-3

R.T.: 4.905 min
 Delta R.T.: -0.001 min
 Response: 5190472
 Conc: 648.69 ng/ml



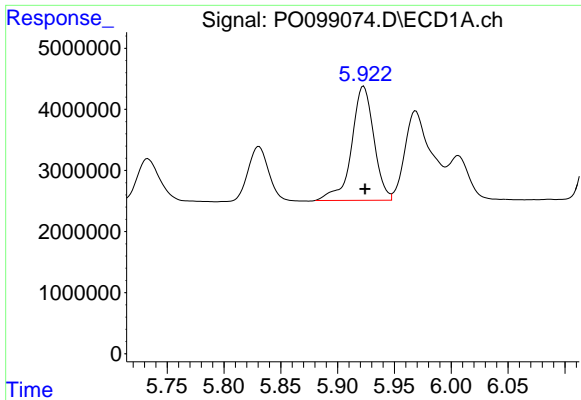
#14 AR-1232-4

R.T.: 5.831 min
 Delta R.T.: -0.002 min
 Response: 11311313
 Conc: 592.87 ng/ml



#14 AR-1232-4

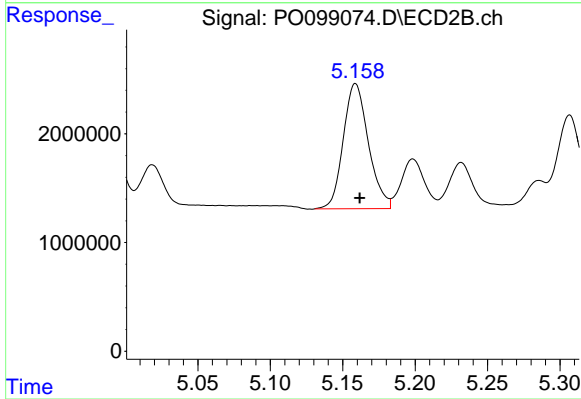
R.T.: 4.987 min
 Delta R.T.: -0.002 min
 Response: 11331628
 Conc: 1472.83 ng/ml



#15 AR-1232-5

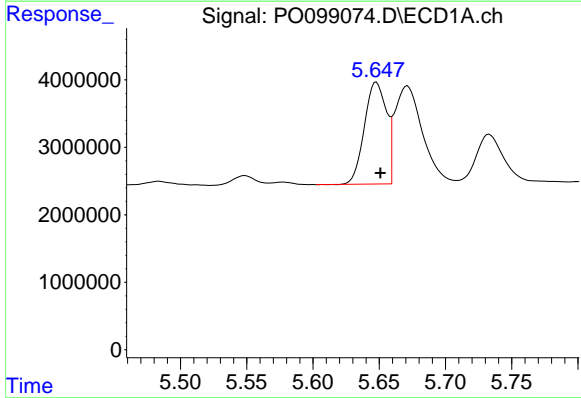
R.T.: 5.923 min
 Delta R.T.: -0.001 min
 Response: 25454819
 Conc: 1528.07 ng/ml

Instrument :
 ECD_O
 ClientSampleId :



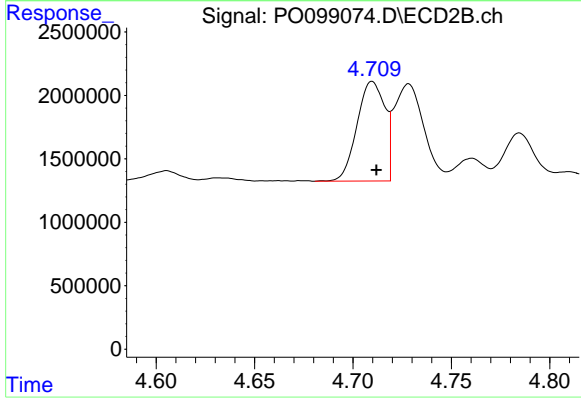
#15 AR-1232-5

R.T.: 5.159 min
 Delta R.T.: -0.003 min
 Response: 13904893
 Conc: 1634.80 ng/ml



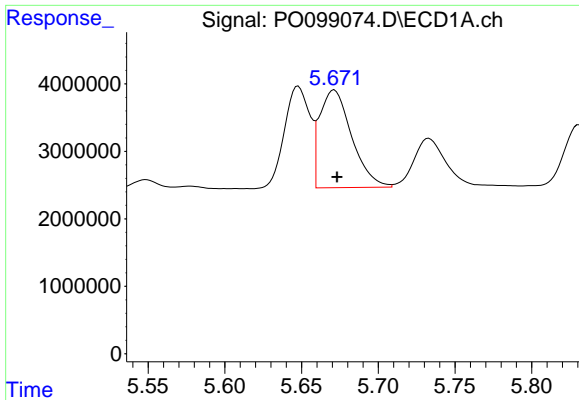
#16 AR-1242-1

R.T.: 5.648 min
 Delta R.T.: -0.003 min
 Response: 17416762
 Conc: 402.31 ng/ml



#16 AR-1242-1

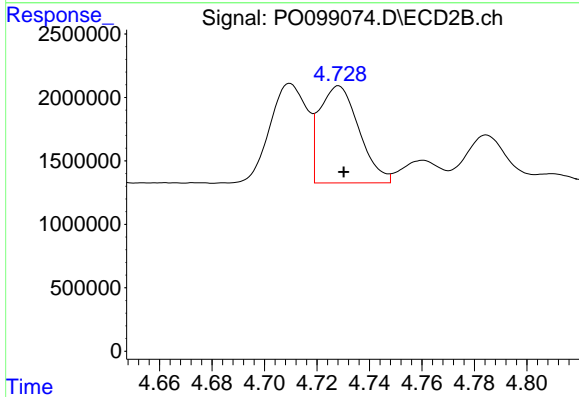
R.T.: 4.710 min
 Delta R.T.: -0.002 min
 Response: 7722949
 Conc: 439.56 ng/ml



#17 AR-1242-2

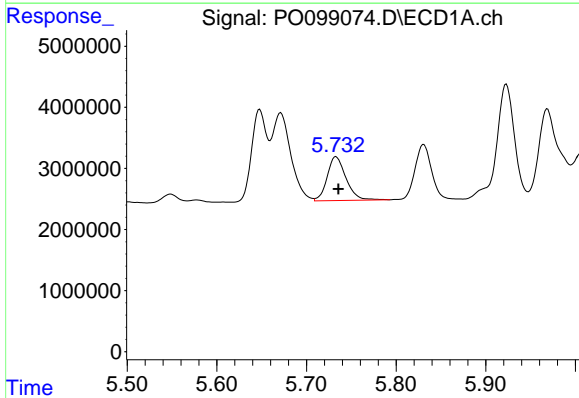
R.T.: 5.671 min
 Delta R.T.: -0.002 min
 Response: 21067834
 Conc: 328.94 ng/ml

Instrument :
 ECD_O
 ClientSampleId :



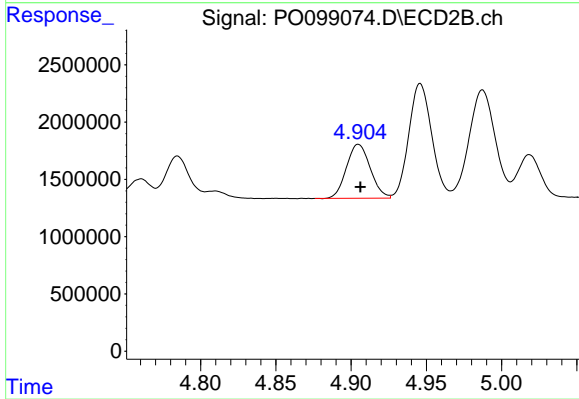
#17 AR-1242-2

R.T.: 4.728 min
 Delta R.T.: -0.002 min
 Response: 8002290
 Conc: 330.21 ng/ml



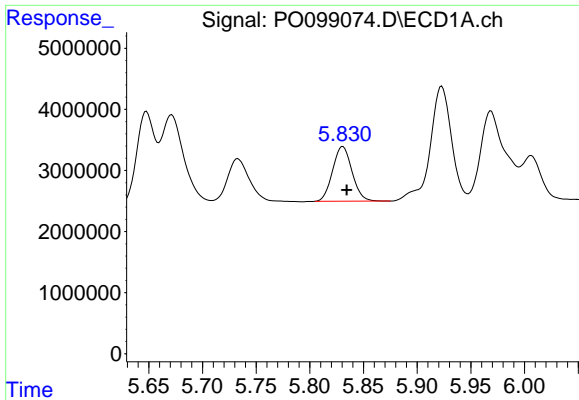
#18 AR-1242-3

R.T.: 5.733 min
 Delta R.T.: -0.003 min
 Response: 10450045
 Conc: 259.79 ng/ml



#18 AR-1242-3

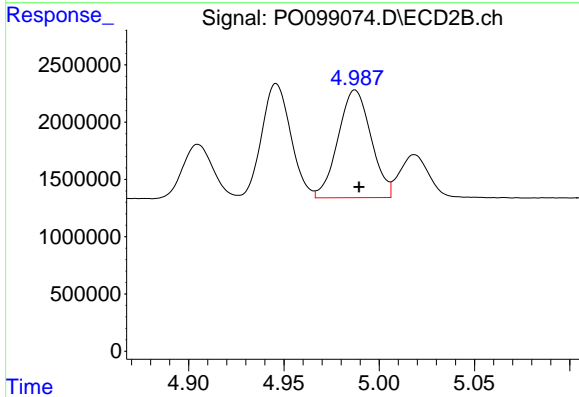
R.T.: 4.905 min
 Delta R.T.: -0.001 min
 Response: 5190472
 Conc: 404.85 ng/ml



#19 AR-1242-4

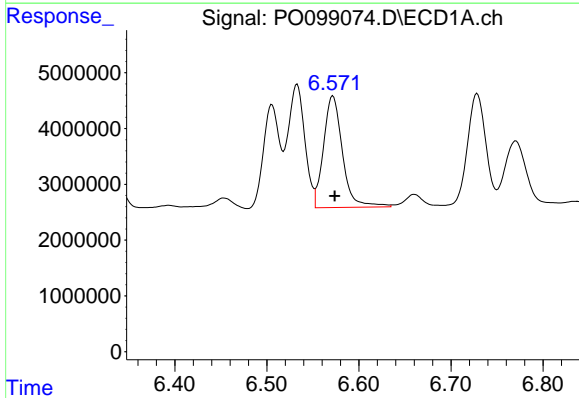
R.T.: 5.831 min
 Delta R.T.: -0.004 min
 Response: 11311313
 Conc: 361.47 ng/ml

Instrument :
 ECD_O
 ClientSampleId :



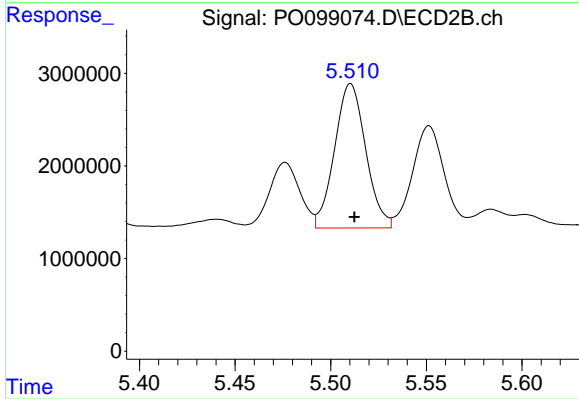
#19 AR-1242-4

R.T.: 4.987 min
 Delta R.T.: -0.002 min
 Response: 11331628
 Conc: 804.99 ng/ml



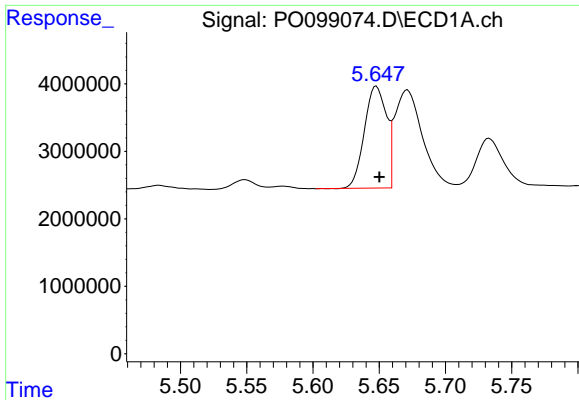
#20 AR-1242-5

R.T.: 6.572 min
 Delta R.T.: -0.002 min
 Response: 28599044
 Conc: 927.08 ng/ml



#20 AR-1242-5

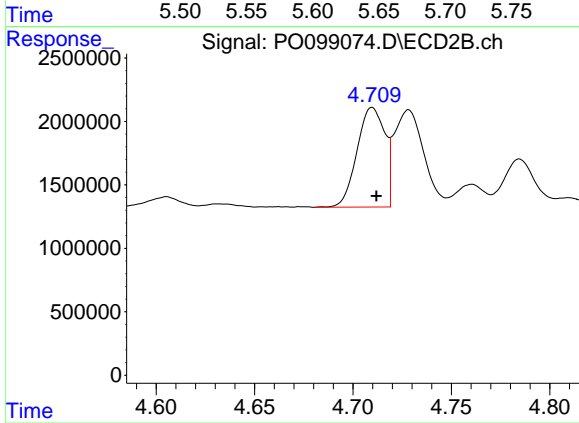
R.T.: 5.510 min
 Delta R.T.: -0.002 min
 Response: 17671309
 Conc: 1057.45 ng/ml



#21 AR-1248-1

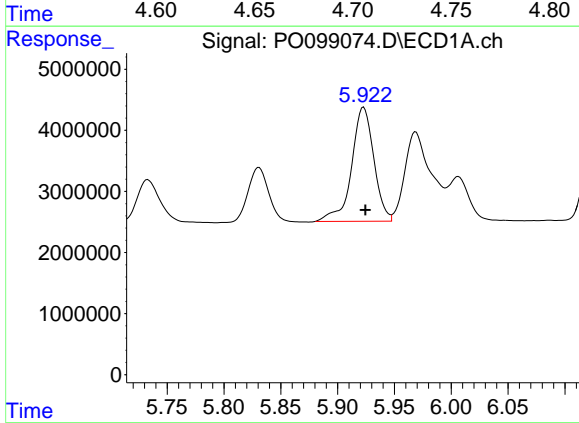
R.T.: 5.648 min
 Delta R.T.: -0.002 min
 Response: 17416762
 Conc: 512.67 ng/ml

Instrument :
 ECD_O
 ClientSampleId :



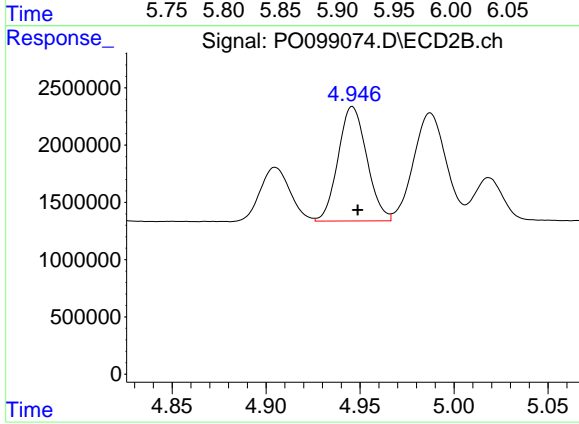
#21 AR-1248-1

R.T.: 4.710 min
 Delta R.T.: -0.002 min
 Response: 7722949
 Conc: 557.21 ng/ml



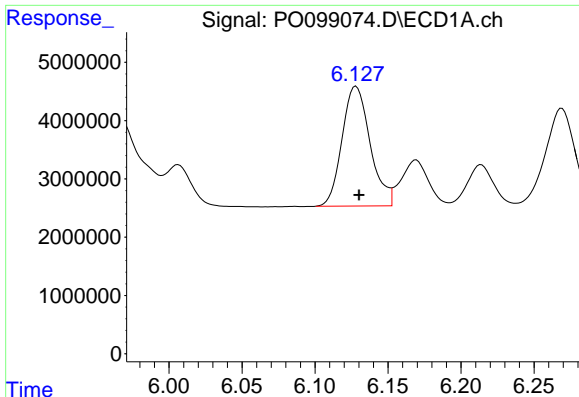
#22 AR-1248-2

R.T.: 5.923 min
 Delta R.T.: -0.002 min
 Response: 25454819
 Conc: 486.40 ng/ml



#22 AR-1248-2

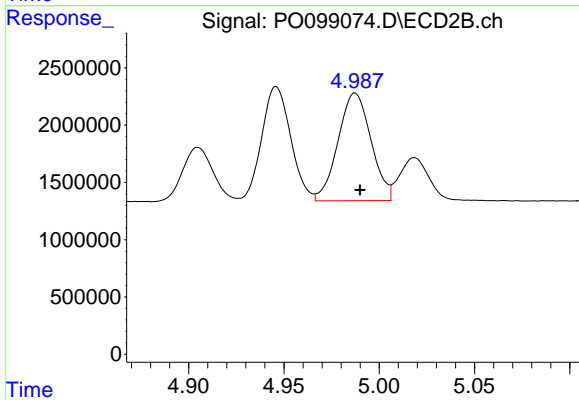
R.T.: 4.946 min
 Delta R.T.: -0.003 min
 Response: 10618685
 Conc: 534.58 ng/ml



#23 AR-1248-3

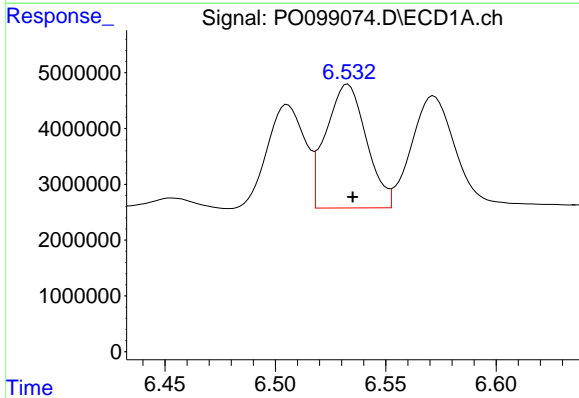
R.T.: 6.128 min
 Delta R.T.: -0.002 min
 Response: 27529646
 Conc: 483.17 ng/ml

Instrument :
 ECD_O
 ClientSampleId :



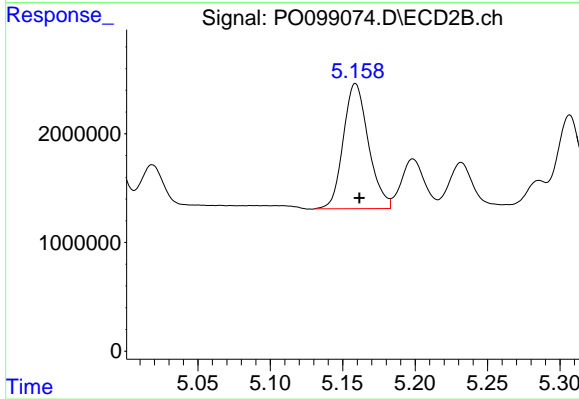
#23 AR-1248-3

R.T.: 4.987 min
 Delta R.T.: -0.003 min
 Response: 11331628
 Conc: 543.39 ng/ml



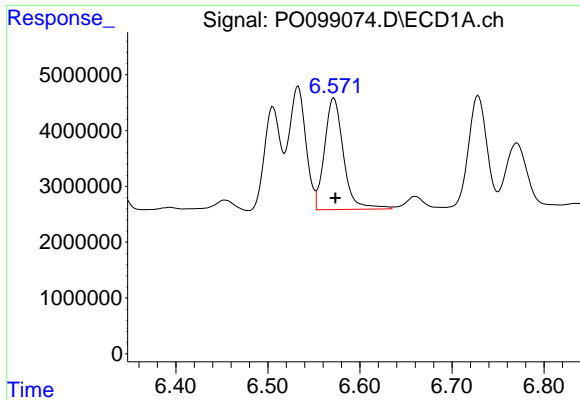
#24 AR-1248-4

R.T.: 6.533 min
 Delta R.T.: -0.002 min
 Response: 28232009
 Conc: 517.72 ng/ml



#24 AR-1248-4

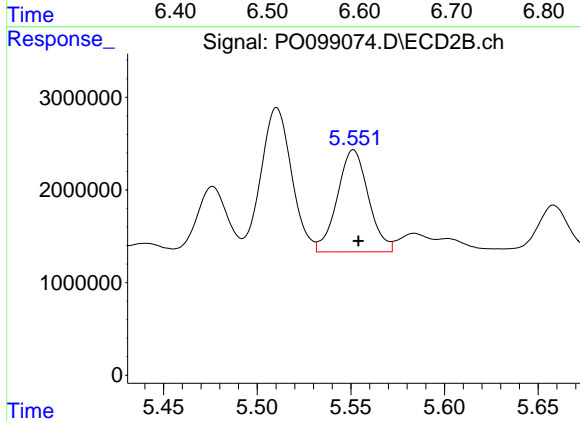
R.T.: 5.159 min
 Delta R.T.: -0.003 min
 Response: 13904893
 Conc: 565.62 ng/ml



#25 AR-1248-5

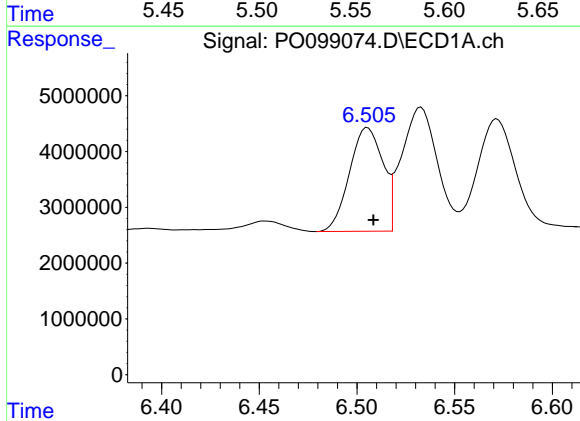
R.T.: 6.572 min
 Delta R.T.: -0.002 min
 Response: 28599044
 Conc: 503.45 ng/ml

Instrument :
 ECD_O
 ClientSampleId :



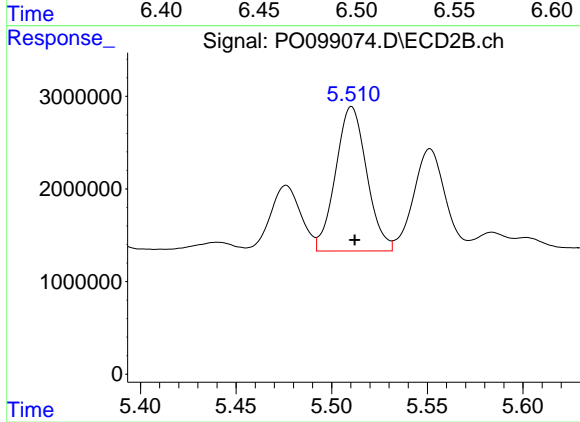
#25 AR-1248-5

R.T.: 5.551 min
 Delta R.T.: -0.003 min
 Response: 12751621
 Conc: 587.13 ng/ml



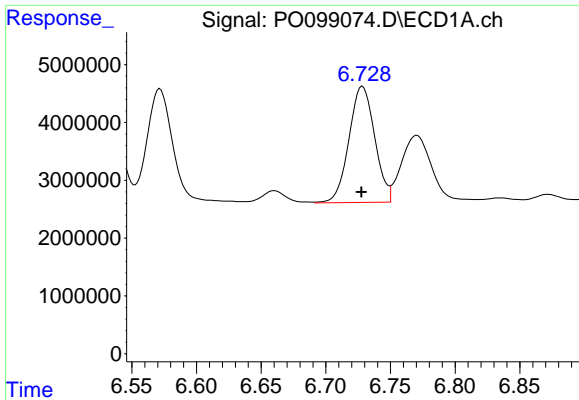
#26 AR-1254-1

R.T.: 6.506 min
 Delta R.T.: -0.003 min
 Response: 22141863
 Conc: 336.36 ng/ml



#26 AR-1254-1

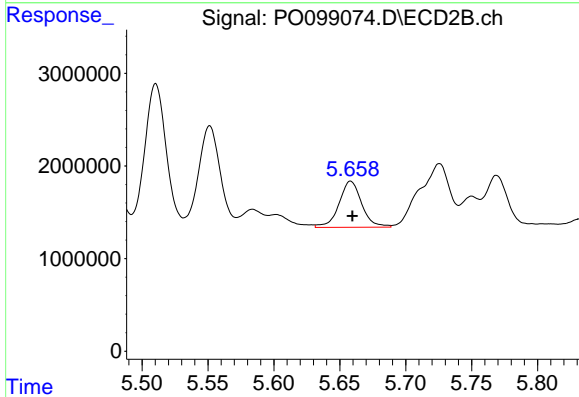
R.T.: 5.510 min
 Delta R.T.: -0.002 min
 Response: 17671309
 Conc: 498.72 ng/ml



#27 AR-1254-2

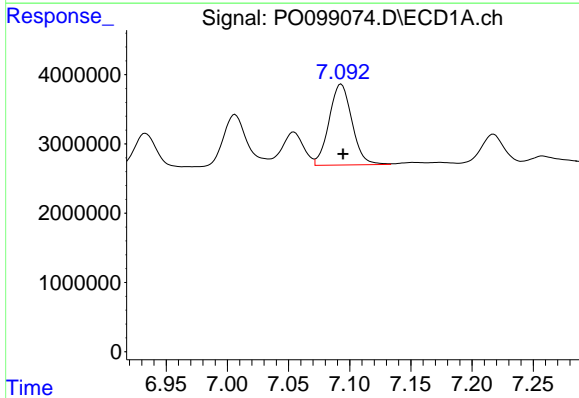
R.T.: 6.728 min
 Delta R.T.: 0.000 min
 Response: 27827442
 Conc: 289.06 ng/ml

Instrument :
 ECD_O
 ClientSampleId :



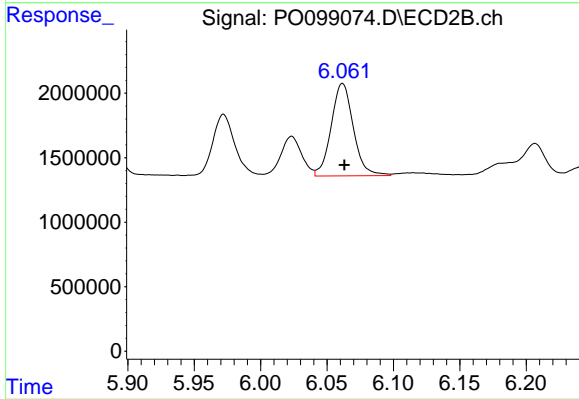
#27 AR-1254-2

R.T.: 5.658 min
 Delta R.T.: -0.001 min
 Response: 5978686
 Conc: 186.93 ng/ml



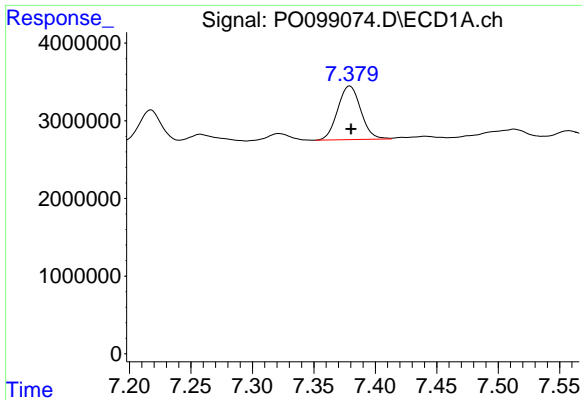
#28 AR-1254-3

R.T.: 7.093 min
 Delta R.T.: -0.002 min
 Response: 15183180
 Conc: 169.87 ng/ml



#28 AR-1254-3

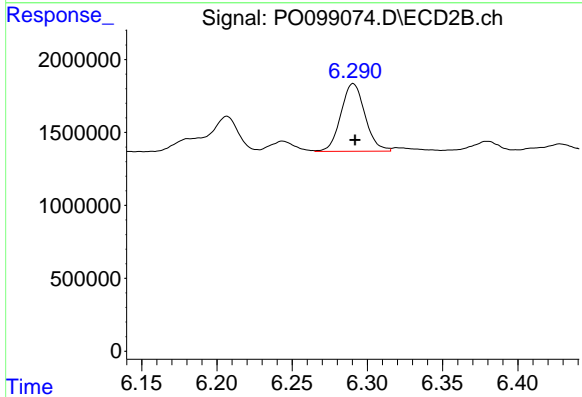
R.T.: 6.062 min
 Delta R.T.: -0.001 min
 Response: 8341045
 Conc: 170.62 ng/ml



#29 AR-1254-4

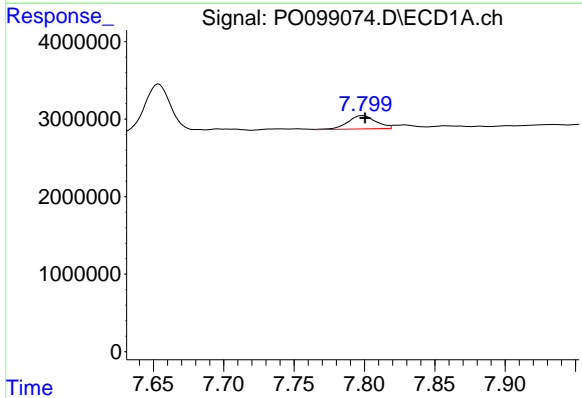
R.T.: 7.379 min
 Delta R.T.: 0.000 min
 Response: 9044422
 Conc: 165.09 ng/ml

Instrument :
 ECD_O
 ClientSampleId :



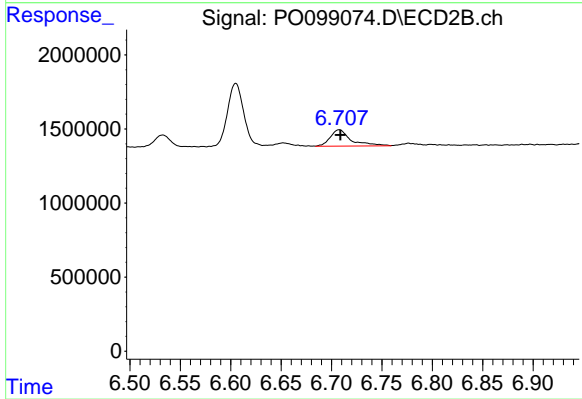
#29 AR-1254-4

R.T.: 6.291 min
 Delta R.T.: -0.001 min
 Response: 5179160
 Conc: 197.63 ng/ml



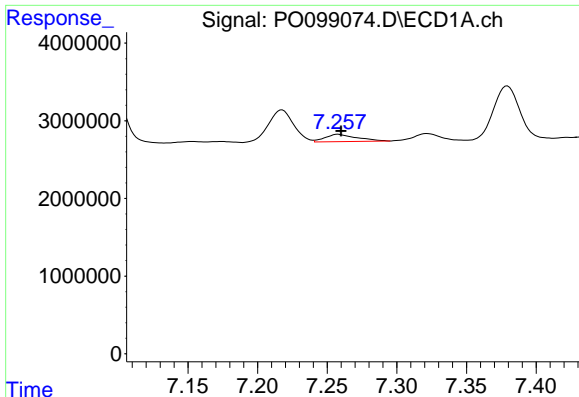
#30 AR-1254-5

R.T.: 7.799 min
 Delta R.T.: -0.002 min
 Response: 2371344
 Conc: 35.22 ng/ml



#30 AR-1254-5

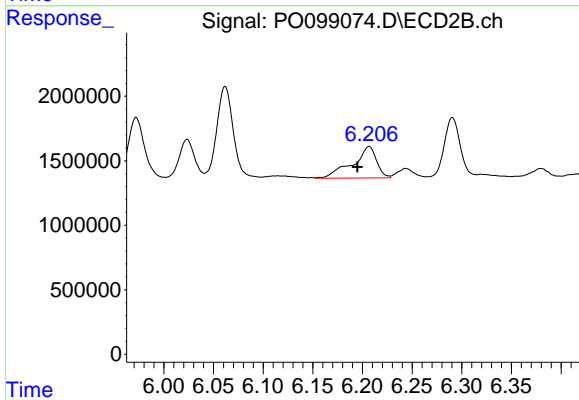
R.T.: 6.708 min
 Delta R.T.: -0.001 min
 Response: 1604092
 Conc: 38.05 ng/ml



#31 AR-1260-1

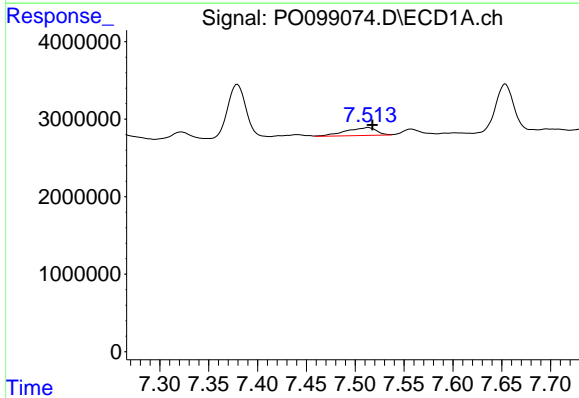
R.T.: 7.258 min
 Delta R.T.: -0.002 min
 Response: 1476363
 Conc: 20.60 ng/ml

Instrument :
 ECD_O
 ClientSampleId :



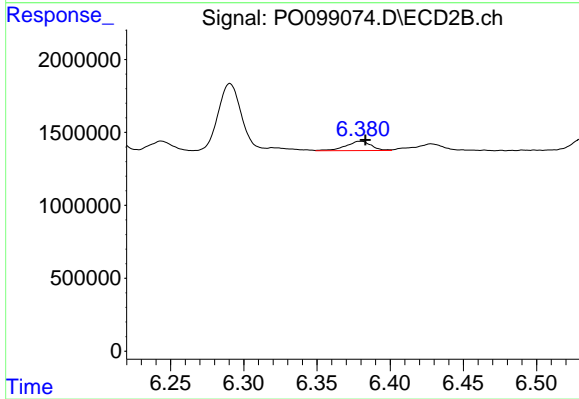
#31 AR-1260-1

R.T.: 6.207 min
 Delta R.T.: 0.012 min
 Response: 4112201
 Conc: 116.57 ng/ml



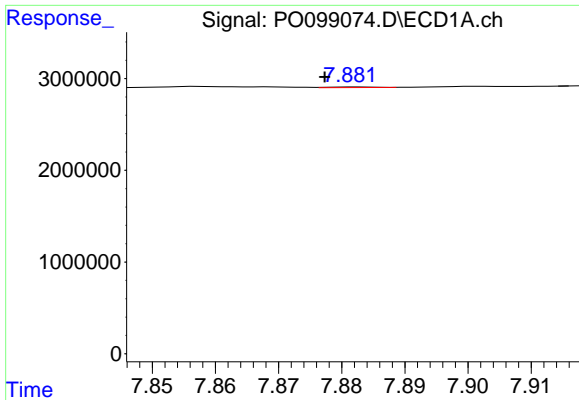
#32 AR-1260-2

R.T.: 7.513 min
 Delta R.T.: -0.004 min
 Response: 2256171
 Conc: 28.60 ng/ml



#32 AR-1260-2

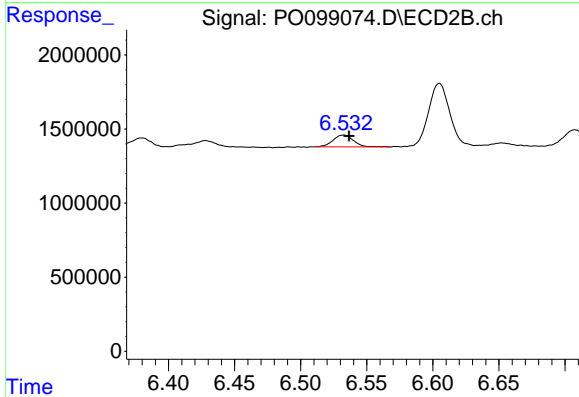
R.T.: 6.380 min
 Delta R.T.: -0.003 min
 Response: 766315
 Conc: 19.12 ng/ml



#33 AR-1260-3

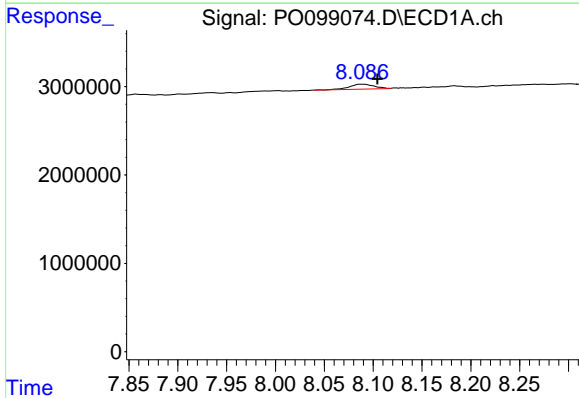
R.T.: 7.882 min
 Delta R.T.: 0.005 min
 Response: 32037
 Conc: 0.59 ng/ml

Instrument :
 ECD_O
 ClientSampleId :



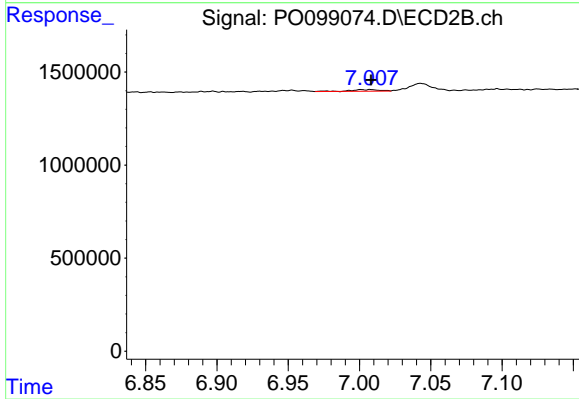
#33 AR-1260-3

R.T.: 6.532 min
 Delta R.T.: -0.004 min
 Response: 865045
 Conc: 22.88 ng/ml



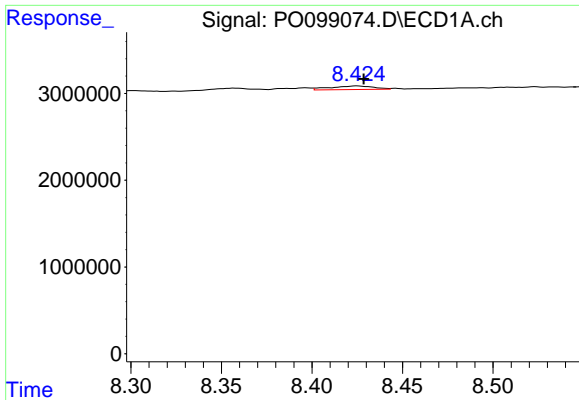
#34 AR-1260-4

R.T.: 8.088 min
 Delta R.T.: -0.017 min
 Response: 1007546
 Conc: 16.08 ng/ml



#34 AR-1260-4

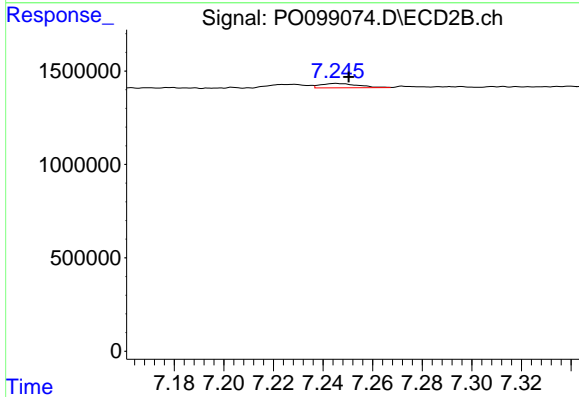
R.T.: 7.001 min
 Delta R.T.: -0.007 min
 Response: 112983
 Conc: 3.91 ng/ml



#35 AR-1260-5

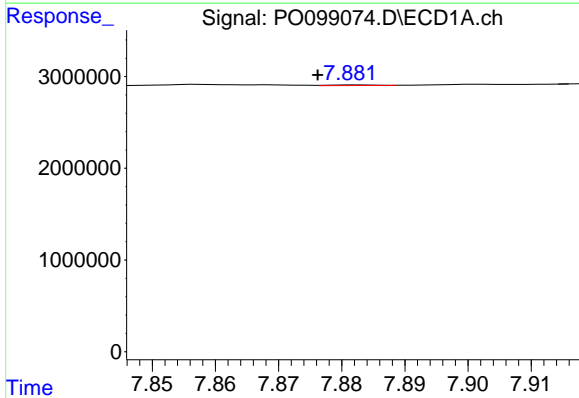
R.T.: 8.425 min
 Delta R.T.: -0.004 min
 Response: 686040
 Conc: 6.41 ng/ml

Instrument :
 ECD_O
 ClientSampleId :



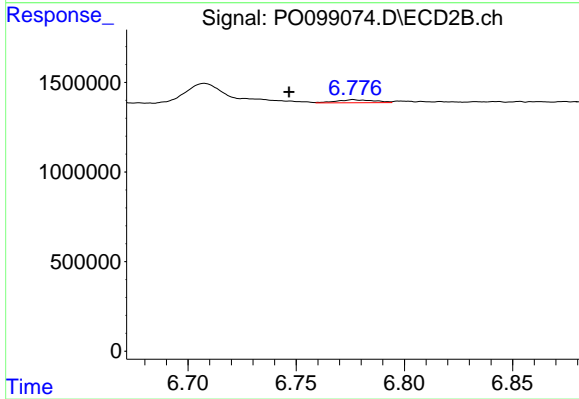
#35 AR-1260-5

R.T.: 7.245 min
 Delta R.T.: -0.005 min
 Response: 248527
 Conc: 4.13 ng/ml



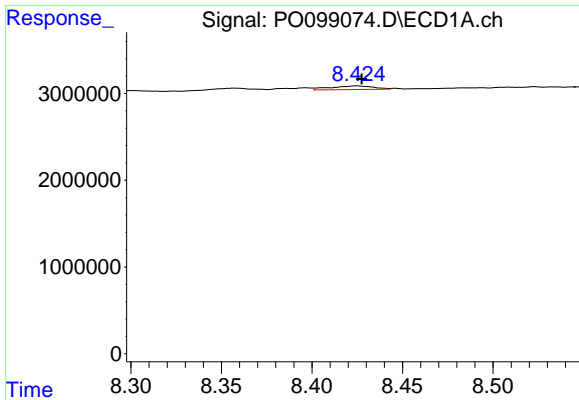
#36 AR-1262-1

R.T.: 7.882 min
 Delta R.T.: 0.006 min
 Response: 32037
 Conc: 0.35 ng/ml



#36 AR-1262-1

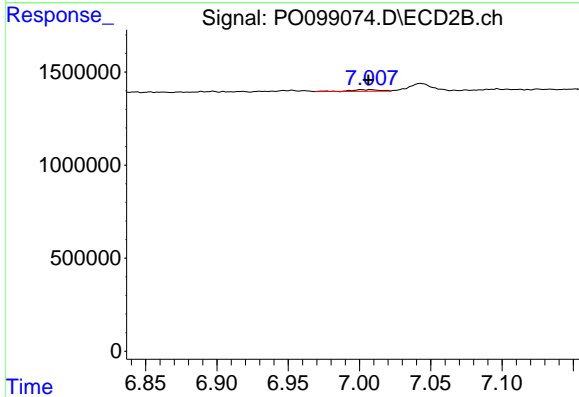
R.T.: 6.776 min
 Delta R.T.: 0.030 min
 Response: 203175
 Conc: 4.33 ng/ml



#37 AR-1262-2

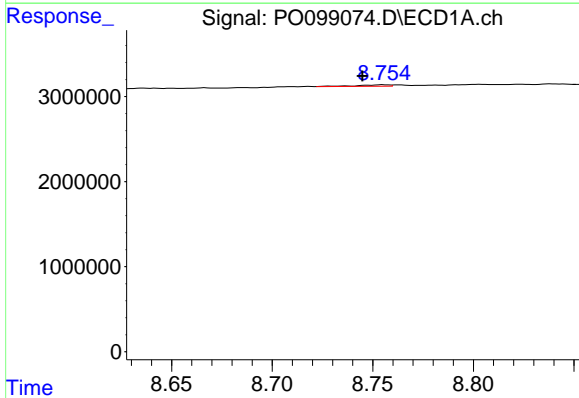
R.T.: 8.425 min
 Delta R.T.: -0.003 min
 Response: 686040
 Conc: 5.15 ng/ml

Instrument :
 ECD_O
 ClientSampleId :



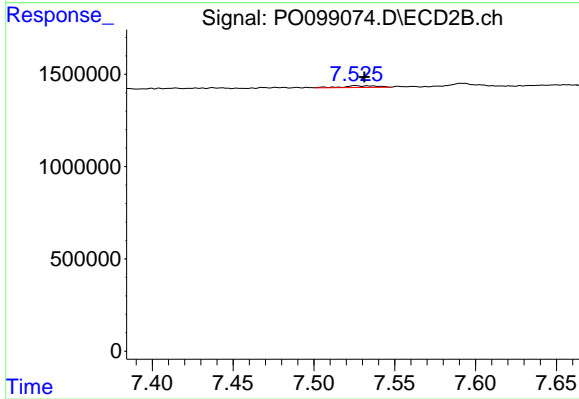
#37 AR-1262-2

R.T.: 7.001 min
 Delta R.T.: -0.005 min
 Response: 112983
 Conc: 2.72 ng/ml



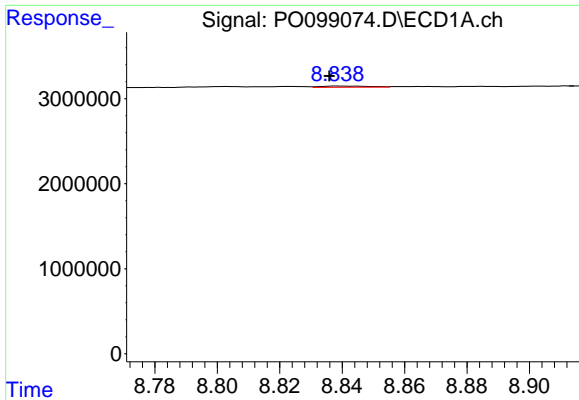
#38 AR-1262-3

R.T.: 8.755 min
 Delta R.T.: 0.010 min
 Response: 181773
 Conc: 1.85 ng/ml



#38 AR-1262-3

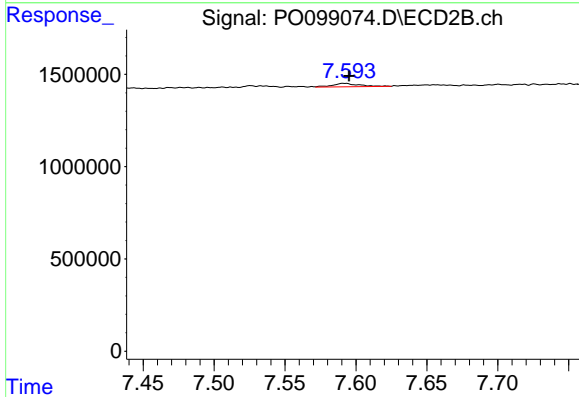
R.T.: 7.526 min
 Delta R.T.: -0.006 min
 Response: 149073
 Conc: 4.67 ng/ml



#39 AR-1262-4

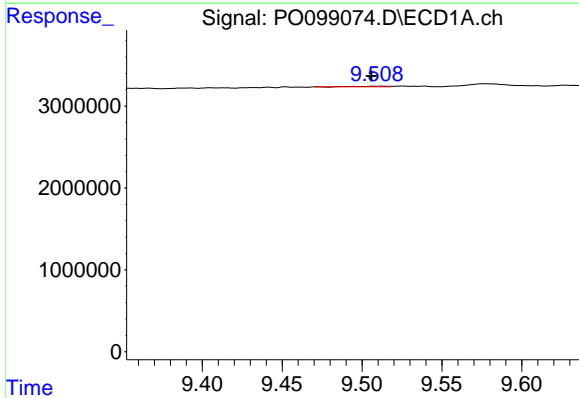
R.T.: 8.839 min
 Delta R.T.: 0.003 min
 Response: 146570
 Conc: 1.83 ng/ml

Instrument :
 ECD_O
 ClientSampleId :



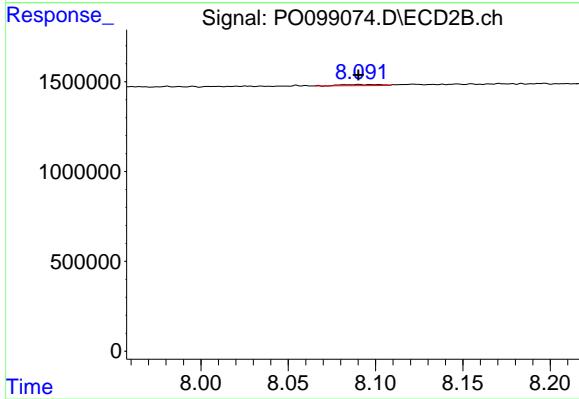
#39 AR-1262-4

R.T.: 7.592 min
 Delta R.T.: -0.003 min
 Response: 238453
 Conc: 4.34 ng/ml



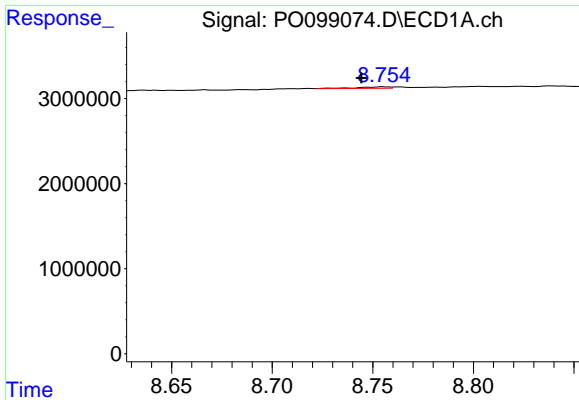
#40 AR-1262-5

R.T.: 9.508 min
 Delta R.T.: 0.002 min
 Response: 93905
 Conc: 2.14 ng/ml



#40 AR-1262-5

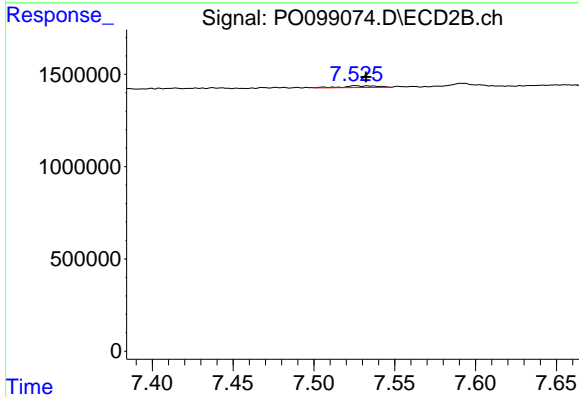
R.T.: 8.090 min
 Delta R.T.: 0.000 min
 Response: 96041
 Conc: 3.82 ng/ml



#41 AR-1268-1

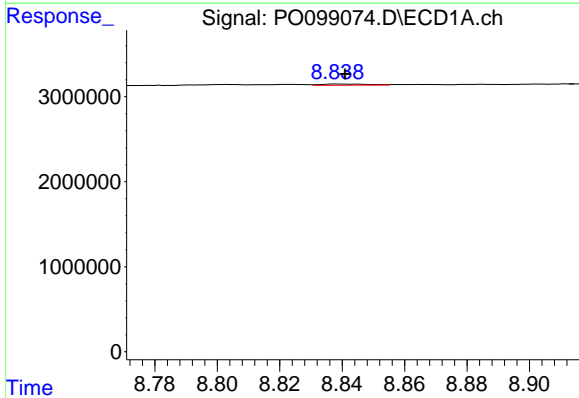
R.T.: 8.755 min
 Delta R.T.: 0.011 min
 Response: 181773
 Conc: 1.06 ng/ml

Instrument :
 ECD_O
 ClientSampleId :



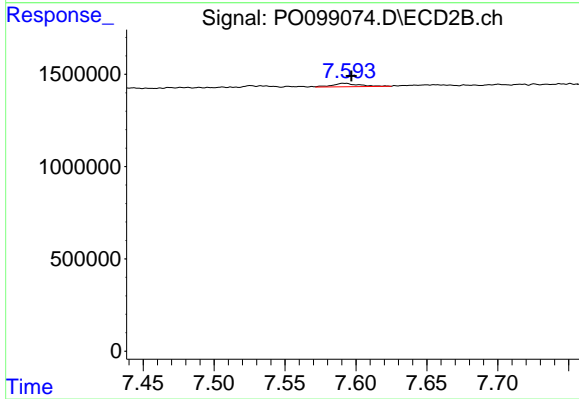
#41 AR-1268-1

R.T.: 7.526 min
 Delta R.T.: -0.007 min
 Response: 149073
 Conc: 1.67 ng/ml



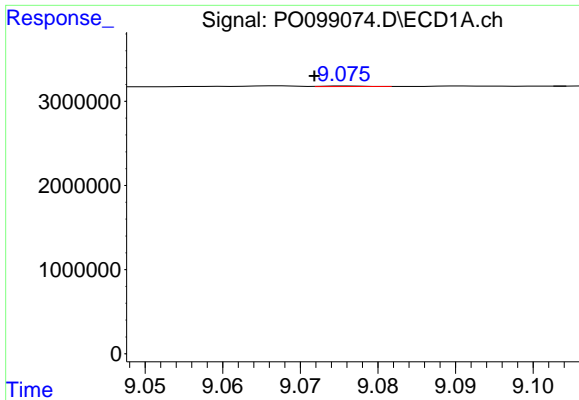
#42 AR-1268-2

R.T.: 8.839 min
 Delta R.T.: -0.002 min
 Response: 146570
 Conc: 0.93 ng/ml



#42 AR-1268-2

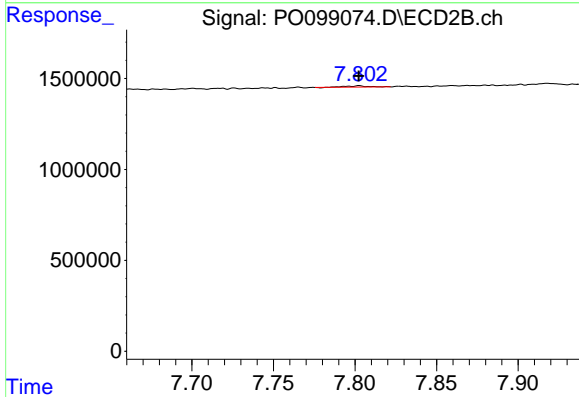
R.T.: 7.592 min
 Delta R.T.: -0.005 min
 Response: 238453
 Conc: 3.02 ng/ml



#43 AR-1268-3

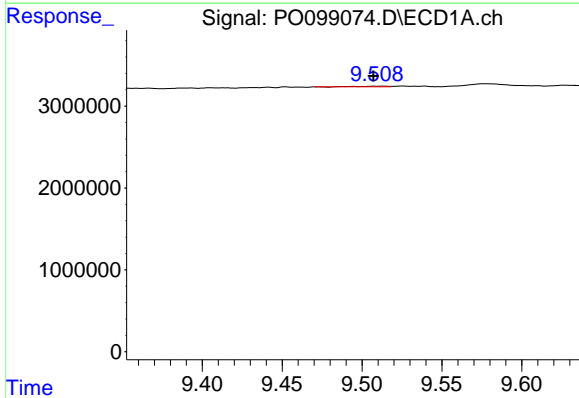
R.T.: 9.076 min
 Delta R.T.: 0.004 min
 Response: 21014
 Conc: 0.15 ng/ml

Instrument :
 ECD_O
 ClientSampleId :



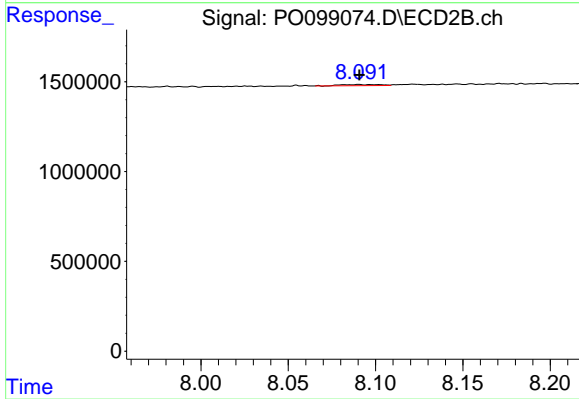
#43 AR-1268-3

R.T.: 7.803 min
 Delta R.T.: 0.000 min
 Response: 59486
 Conc: 0.84 ng/ml



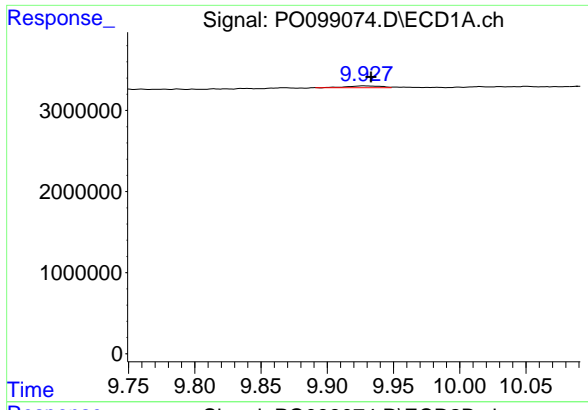
#44 AR-1268-4

R.T.: 9.508 min
 Delta R.T.: 0.001 min
 Response: 93905
 Conc: 1.87 ng/ml



#44 AR-1268-4

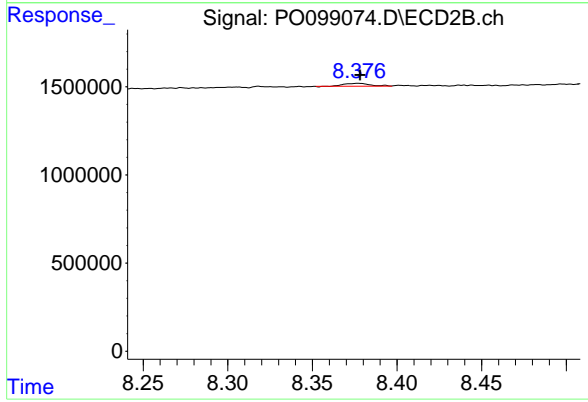
R.T.: 8.090 min
 Delta R.T.: 0.000 min
 Response: 96041
 Conc: 3.48 ng/ml



#45 AR-1268-5

R.T.: 9.928 min
 Delta R.T.: -0.005 min
 Response: 370503
 Conc: 0.91 ng/ml

Instrument :
 ECD_O
 ClientSampleId :



#45 AR-1268-5

R.T.: 8.377 min
 Delta R.T.: 0.000 min
 Response: 183895
 Conc: 0.96 ng/ml