

Data Path : Z:\pestpcbsrv\HPCHEM1\ECD_0\Data\PO102723\
 Data File : PO099117.D
 Signal(s) : Signal #1: ECD1A.ch Signal #2: ECD2B.ch
 Acq On : 28 Oct 2023 19:58
 Operator : YP/AJ
 Sample : AR1254CCC500
 Misc :
 ALS Vial : 6 Sample Multiplier: 1

Instrument :
 ECD_0
 ClientSampleId :

Integration File signal 1: autoint1.e
 Integration File signal 2: autoint2.e
 Quant Time: Oct 29 23:56:54 2023
 Quant Method : Z:\pestpcbsrv\HPCHEM1\ECD_0\methods\PO102523.M
 Quant Title : GC EXTRACTABLES
 QLast Update : Wed Oct 25 06:04:36 2023
 Response via : Initial Calibration
 Integrator: ChemStation

Volume Inj. : 2 µl
 Signal #1 Phase : ZB-MR1 Signal #2 Phase: ZB-MR2
 Signal #1 Info : 30Mx0.32mmx 0.50µ Signal #2 Info : 30M x 0.32mm x 0.25µm

Compound	RT#1	RT#2	Resp#1	Resp#2	ng/ml	ng/ml

System Monitoring Compounds						
1) SA Tetrachlo...	4.474	3.628	95234744	38328935	48.197	53.258
2) SA Decachlor...	10.273	8.625	61273584	27510296	54.087	51.274
Target Compounds						
3) L1 AR-1016-1	5.648	4.709	818200	319157	14.858	14.252
4) L1 AR-1016-2	5.673	4.726	1034782	258546	12.514	8.272 #
5) L1 AR-1016-3	5.732	4.906	301062	151567	5.849	8.951 #
6) L1 AR-1016-4	5.831	4.947	403285	7011981	9.923	484.998 #
7) L1 AR-1016-5	6.126	5.158	10029307	8641871	236.300	462.581 #
8) L2 AR-1221-1	4.674	3.833	314636	50695	12.672	5.457 #
9) L2 AR-1221-2	4.781	3.928	2120571	557713	114.630	86.017
10) L2 AR-1221-3	4.848	4.002	550963	115801	10.170	5.725 #
11) L3 AR-1232-1	4.848	4.002	550963	115801	12.044	6.756 #
12) L3 AR-1232-2	5.378	4.726	302501	258546	12.810	16.876 #
13) L3 AR-1232-3	5.673	4.906	1034782	151567	26.202	18.942 #
14) L3 AR-1232-4	5.831	4.986	403285	2446386	21.138	317.970 #
15) L3 AR-1232-5	5.922	5.158	17588619	8641871	1055.855	1016.024
16) L4 AR-1242-1	5.648	4.709	818200	319157	18.899	18.165
17) L4 AR-1242-2	5.673	4.726	1034782	258546	16.157	10.669 #
18) L4 AR-1242-3	5.732	4.906	301062	151567	7.484	11.822 #
19) L4 AR-1242-4	5.831	4.986	403285	2446386	12.887	173.789 #
20) L4 AR-1242-5	6.573	5.510	14545561	23148220	471.514	1385.193 #
21) L5 AR-1248-1	5.648	4.709	818200	319157	24.084	23.027
22) L5 AR-1248-2	5.922	4.947	17588619	7011981	336.089	353.007
23) L5 AR-1248-3	6.126	4.986	10029307	2446386	176.022	117.313 #
24) L5 AR-1248-4	6.531	5.158	16148192	8641871	296.125	351.531
25) L5 AR-1248-5	6.573	5.549	14545561	3448601	256.056	158.787 #
26) L6 AR-1254-1	6.506	5.510	33273419	23148220	505.468	653.289 #
27) L6 AR-1254-2	6.724	5.657	47045815	19181361	488.693	599.710
28) L6 AR-1254-3	7.092	6.061	42245741	26211681	472.637	536.163
29) L6 AR-1254-4	7.377	6.289	25159654	15163924	459.256	578.625 #
30) L6 AR-1254-5	7.797	6.707	32863883	22170711	488.067	525.936
31) L7 AR-1260-1	7.256	6.191	17720596	13975025	247.284	396.169 #
32) L7 AR-1260-2	7.513	6.379	18409712	10899137	233.339	271.891
33) L7 AR-1260-3	7.856	6.531	4278367	10122436	78.340	267.698 #
34) L7 AR-1260-4	8.087	7.004	11968499	1182888	191.017	40.935 #
35) L7 AR-1260-5	8.424	7.245	5255864	2692261	49.113	44.737
36) L8 AR-1262-1	7.856	6.776	4278367	1921081	47.269	40.943
37) L8 AR-1262-2	8.424	7.004	5255864	1182888	39.427	28.492 #
38) L8 AR-1262-3	8.756	7.533	4027371	586278	40.955	18.352 #
39) L8 AR-1262-4	8.841	7.591	105877	2836397	1.322	51.591 #
40) L8 AR-1262-5	9.507	8.092	50473	62562	1.149	2.491 #
41) L9 AR-1268-1	8.756	7.533	4027371	586278	23.382	6.573 #

Data Path : Z:\pestpcbsrv\HPCHEM1\ECD_0\Data\PO102723\
 Data File : PO099117.D
 Signal(s) : Signal #1: ECD1A.ch Signal #2: ECD2B.ch
 Acq On : 28 Oct 2023 19:58
 Operator : YP/AJ
 Sample : AR1254CCC500
 Misc :
 ALS Vial : 6 Sample Multiplier: 1

Instrument :
 ECD_0
 ClientSampleId :

Integration File signal 1: autoint1.e
 Integration File signal 2: autoint2.e
 Quant Time: Oct 29 23:56:54 2023
 Quant Method : Z:\pestpcbsrv\HPCHEM1\ECD_0\methods\PO102523.M
 Quant Title : GC EXTRACTABLES
 QLast Update : Wed Oct 25 06:04:36 2023
 Response via : Initial Calibration
 Integrator: ChemStation

Volume Inj. : 2 µl
 Signal #1 Phase : ZB-MR1 Signal #2 Phase: ZB-MR2
 Signal #1 Info : 30Mx0.32mmx 0.50µ Signal #2 Info : 30M x 0.32mm x 0.25µm

	Compound	RT#1	RT#2	Resp#1	Resp#2	ng/ml	ng/ml
42)	L9 AR-1268-2	8.841	7.591	105877	2836397	0.675	35.923 #
43)	L9 AR-1268-3	9.066	7.802	206142	75000	1.470	1.065 #
44)	L9 AR-1268-4	9.507	8.092	50473	62562	1.007	2.270 #
45)	L9 AR-1268-5	9.925	8.374	185006	164531	0.452	0.863 #

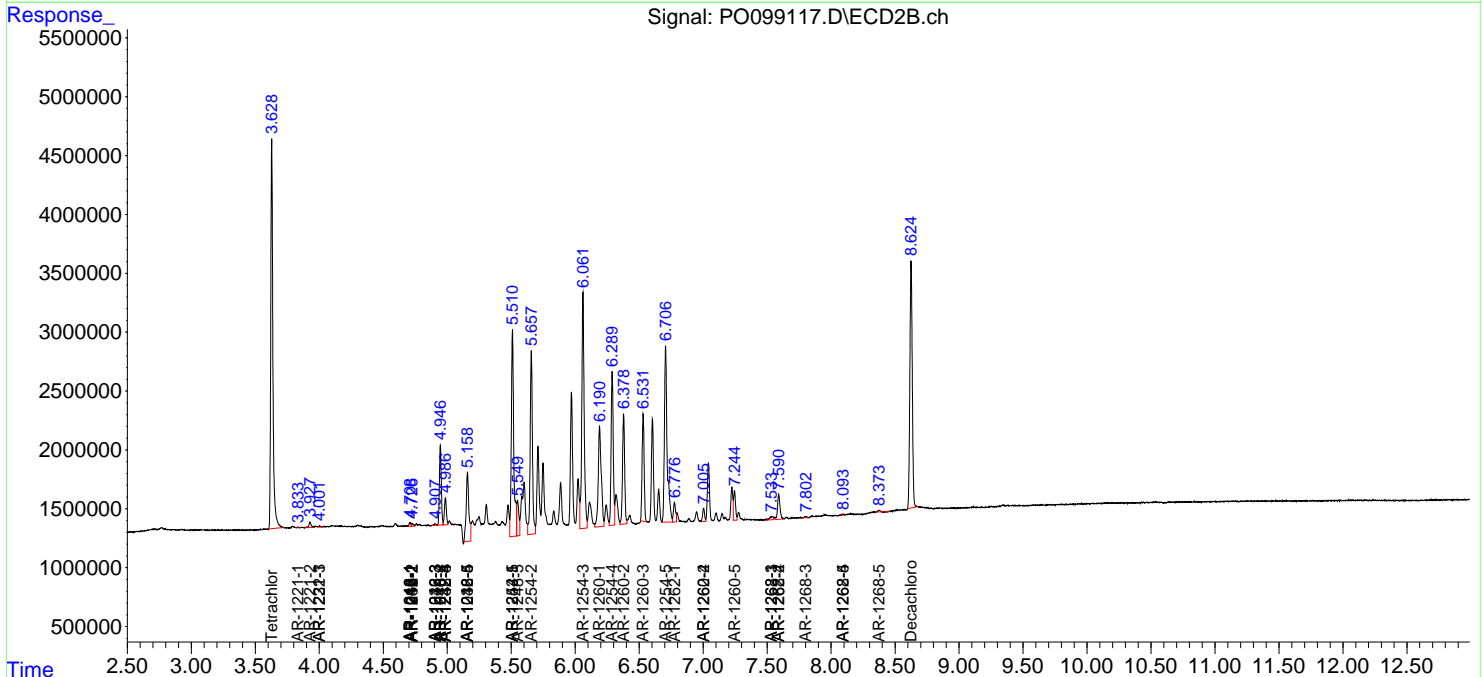
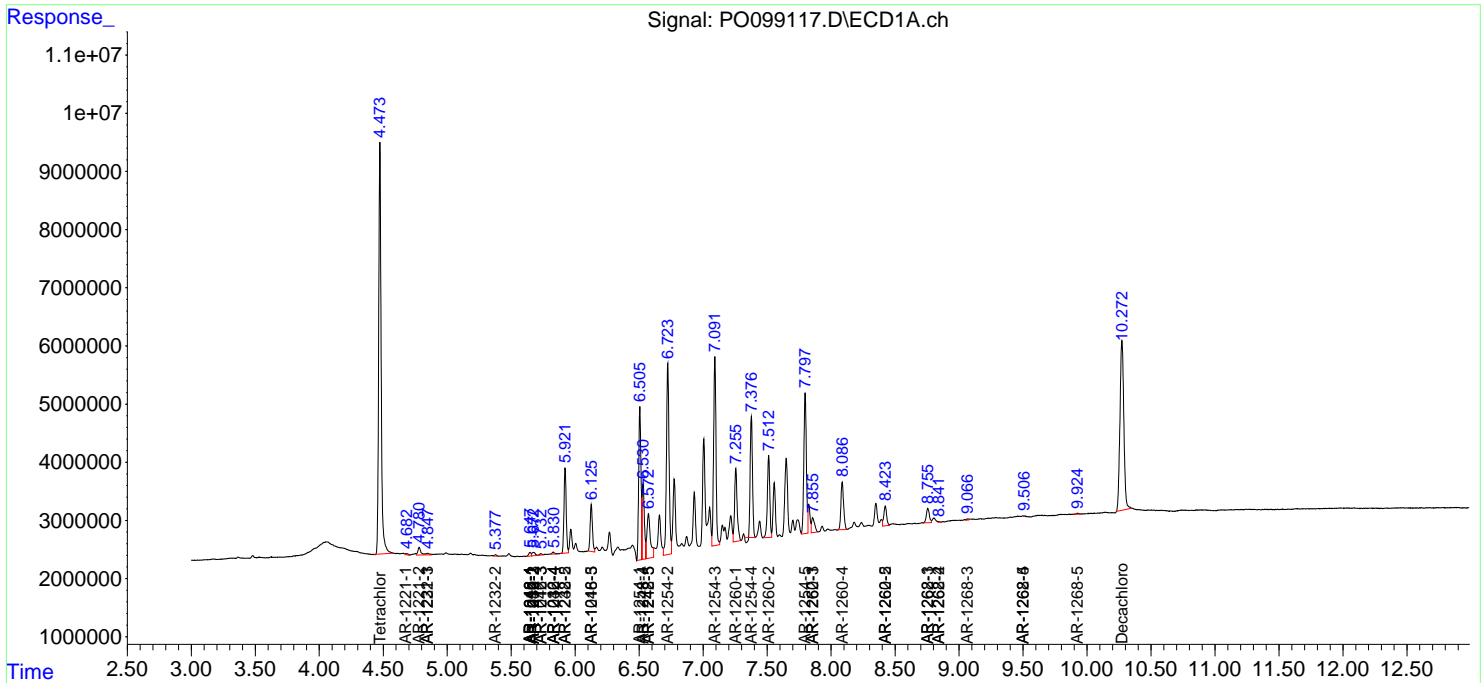
(f)=RT Delta > 1/2 Window (#)=Amounts differ by > 25% (m)=manual int.

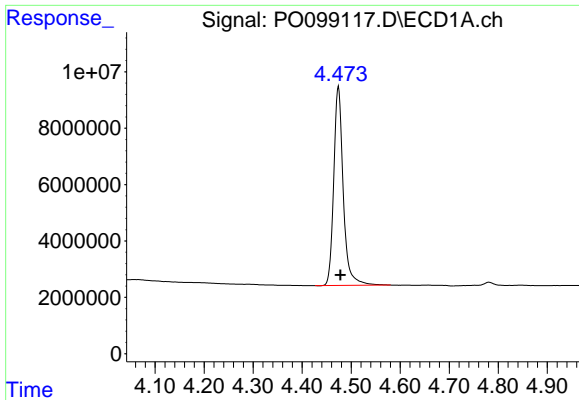
Data Path : Z:\pestpcbsrv\HPCHEM1\ECD_O\Data\PO102723\
 Data File : PO099117.D
 Signal(s) : Signal #1: ECD1A.ch Signal #2: ECD2B.ch
 Acq On : 28 Oct 2023 19:58
 Operator : YP/AJ
 Sample : AR1254CCC500
 Misc :
 ALS Vial : 6 Sample Multiplier: 1

Instrument :
 ECD_O
 ClientSampleId :

Integration File signal 1: autoint1.e
 Integration File signal 2: autoint2.e
 Quant Time: Oct 29 23:56:54 2023
 Quant Method : Z:\pestpcbsrv\HPCHEM1\ECD_O\methods\PO102523.M
 Quant Title : GC EXTRACTABLES
 QLast Update : Wed Oct 25 06:04:36 2023
 Response via : Initial Calibration
 Integrator: ChemStation

Volume Inj. : 2 µl
 Signal #1 Phase : ZB-MR1 Signal #2 Phase: ZB-MR2
 Signal #1 Info : 30Mx0.32mmx 0.50µ Signal #2 Info : 30M x 0.32mm x 0.25µm

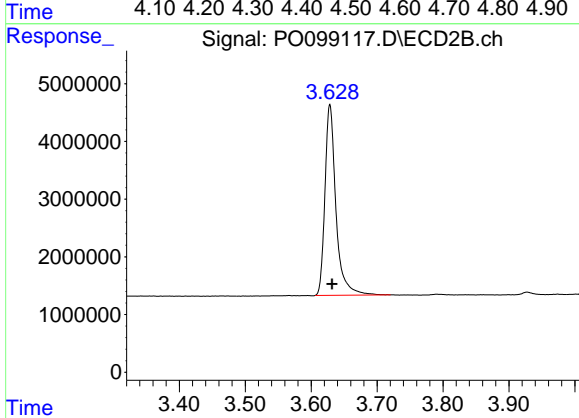




#1 Tetrachloro-m-xylene

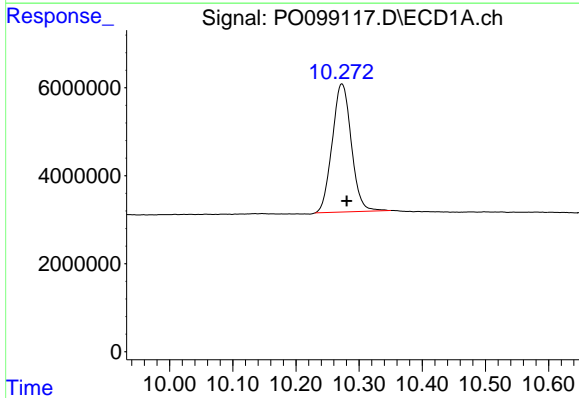
R.T.: 4.474 min
 Delta R.T.: -0.004 min
 Response: 95234744
 Conc: 48.20 ng/ml

Instrument :
 ECD_O
 ClientSampleId :



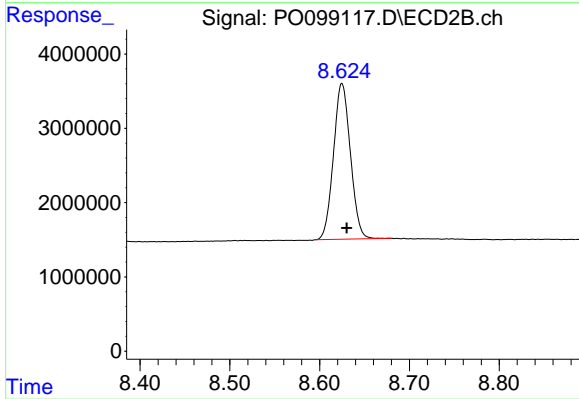
#1 Tetrachloro-m-xylene

R.T.: 3.628 min
 Delta R.T.: -0.003 min
 Response: 38328935
 Conc: 53.26 ng/ml



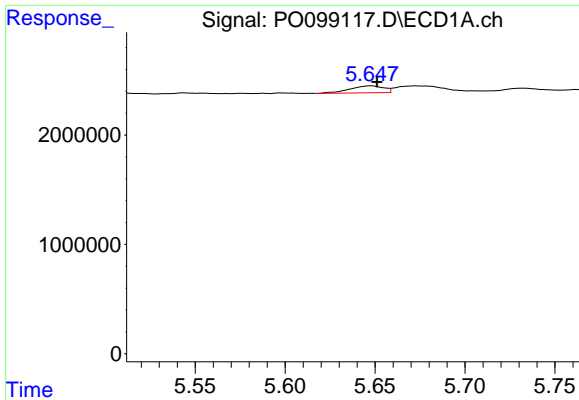
#2 Decachlorobiphenyl

R.T.: 10.273 min
 Delta R.T.: -0.007 min
 Response: 61273584
 Conc: 54.09 ng/ml



#2 Decachlorobiphenyl

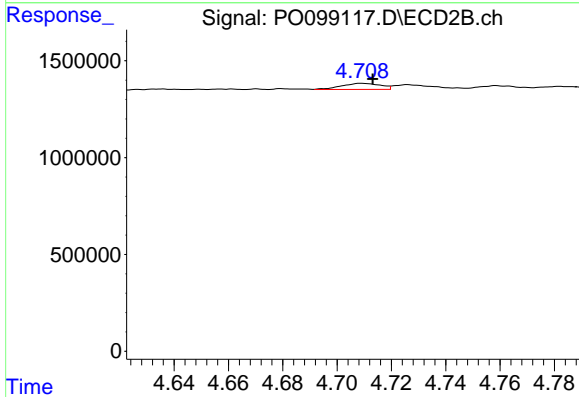
R.T.: 8.625 min
 Delta R.T.: -0.005 min
 Response: 27510296
 Conc: 51.27 ng/ml



#3 AR-1016-1

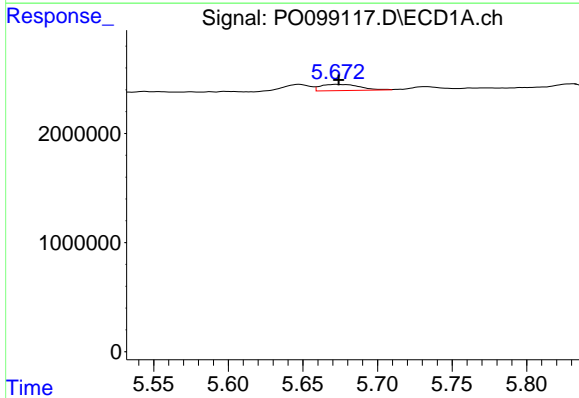
R.T.: 5.648 min
 Delta R.T.: -0.003 min
 Response: 818200
 Conc: 14.86 ng/ml

Instrument :
 ECD_O
 ClientSampleId :



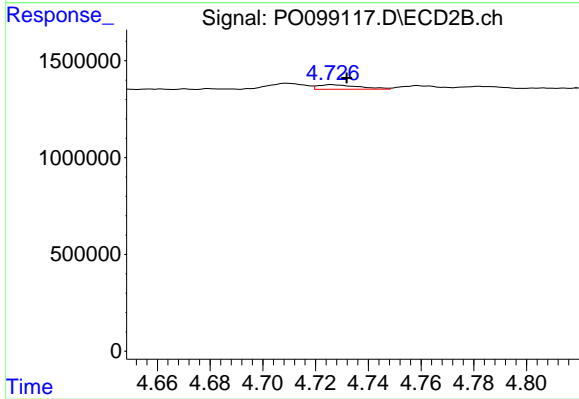
#3 AR-1016-1

R.T.: 4.709 min
 Delta R.T.: -0.004 min
 Response: 319157
 Conc: 14.25 ng/ml



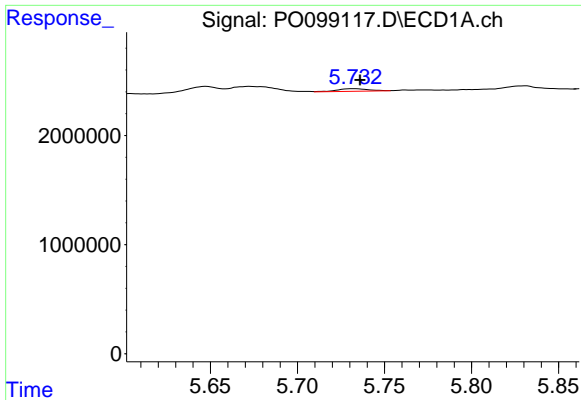
#4 AR-1016-2

R.T.: 5.673 min
 Delta R.T.: -0.001 min
 Response: 1034782
 Conc: 12.51 ng/ml



#4 AR-1016-2

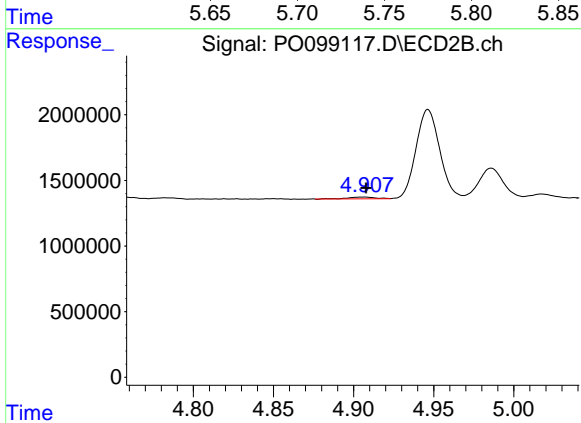
R.T.: 4.726 min
 Delta R.T.: -0.006 min
 Response: 258546
 Conc: 8.27 ng/ml



#5 AR-1016-3

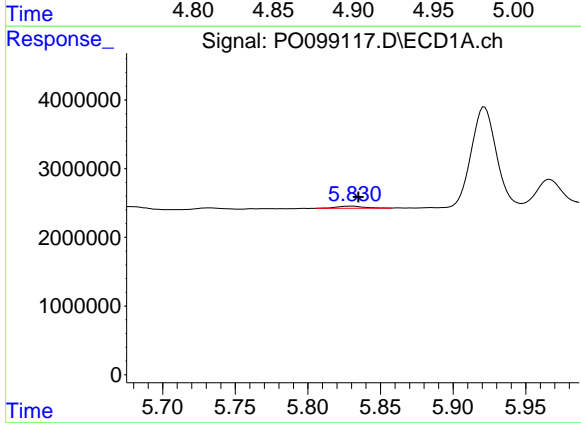
R.T.: 5.732 min
 Delta R.T.: -0.003 min
 Response: 301062
 Conc: 5.85 ng/ml

Instrument :
 ECD_O
 ClientSampleId :



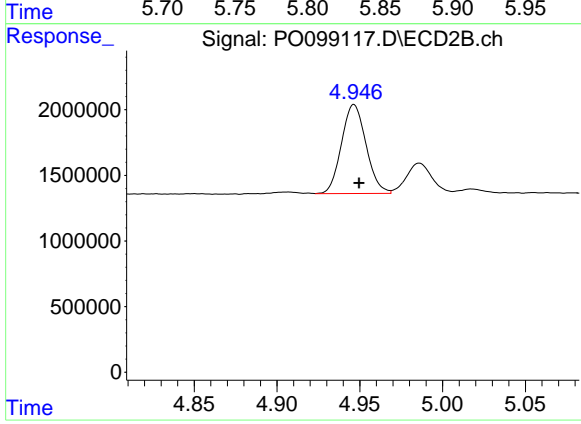
#5 AR-1016-3

R.T.: 4.906 min
 Delta R.T.: -0.002 min
 Response: 151567
 Conc: 8.95 ng/ml



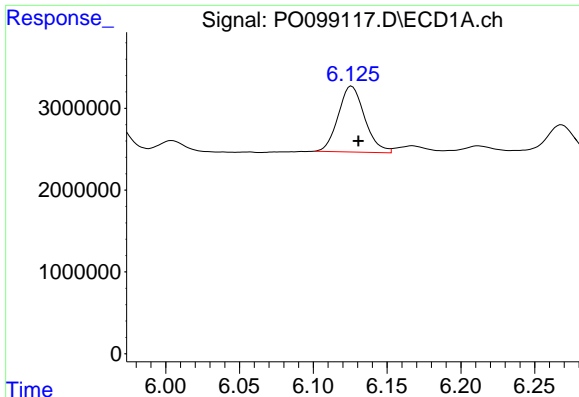
#6 AR-1016-4

R.T.: 5.831 min
 Delta R.T.: -0.004 min
 Response: 403285
 Conc: 9.92 ng/ml



#6 AR-1016-4

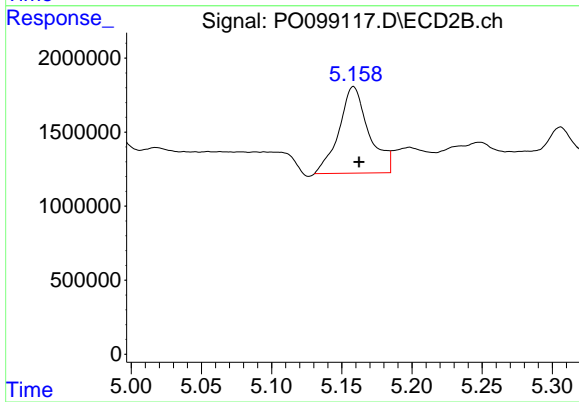
R.T.: 4.947 min
 Delta R.T.: -0.003 min
 Response: 7011981
 Conc: 485.00 ng/ml



#7 AR-1016-5

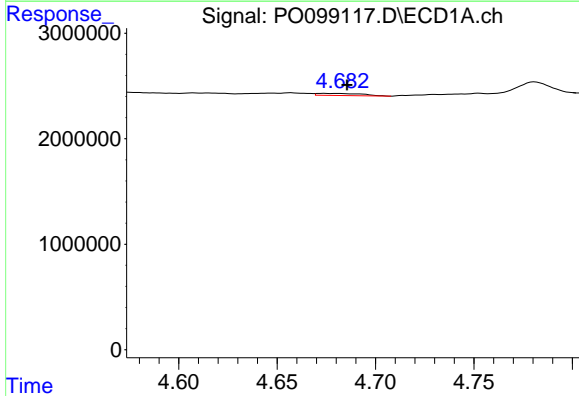
R.T.: 6.126 min
 Delta R.T.: -0.005 min
 Response: 10029307
 Conc: 236.30 ng/ml

Instrument :
 ECD_O
 ClientSampleId :



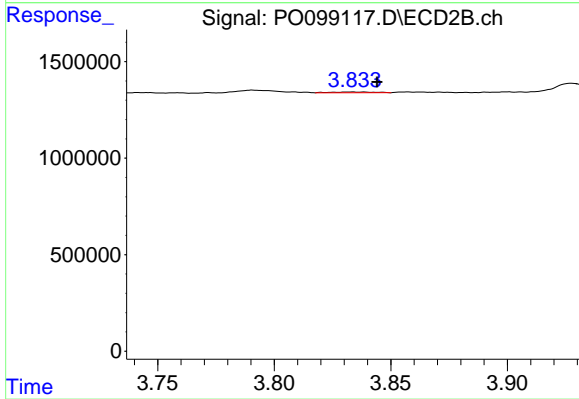
#7 AR-1016-5

R.T.: 5.158 min
 Delta R.T.: -0.004 min
 Response: 8641871
 Conc: 462.58 ng/ml



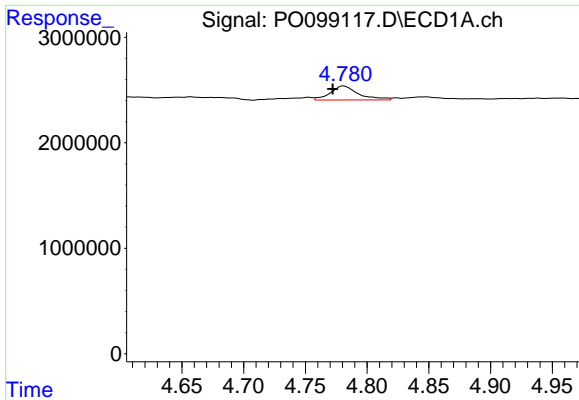
#8 AR-1221-1

R.T.: 4.674 min
 Delta R.T.: -0.011 min
 Response: 314636
 Conc: 12.67 ng/ml



#8 AR-1221-1

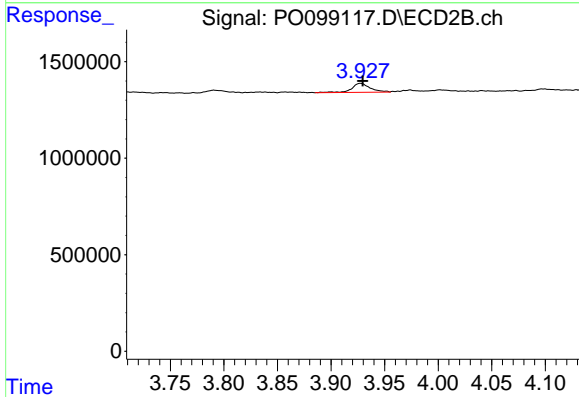
R.T.: 3.833 min
 Delta R.T.: -0.011 min
 Response: 50695
 Conc: 5.46 ng/ml



#9 AR-1221-2

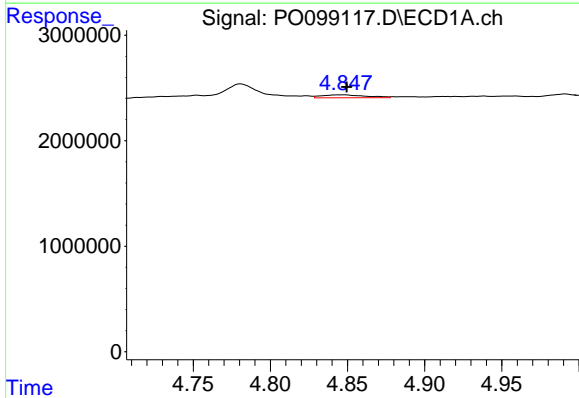
R.T.: 4.781 min
 Delta R.T.: 0.009 min
 Response: 2120571
 Conc: 114.63 ng/ml

Instrument :
 ECD_O
 ClientSampleId :



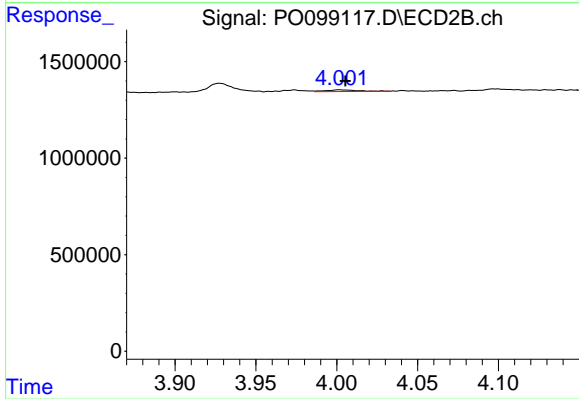
#9 AR-1221-2

R.T.: 3.928 min
 Delta R.T.: -0.002 min
 Response: 557713
 Conc: 86.02 ng/ml



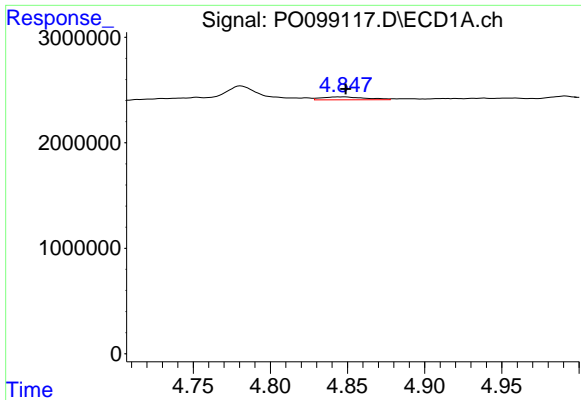
#10 AR-1221-3

R.T.: 4.848 min
 Delta R.T.: -0.002 min
 Response: 550963
 Conc: 10.17 ng/ml



#10 AR-1221-3

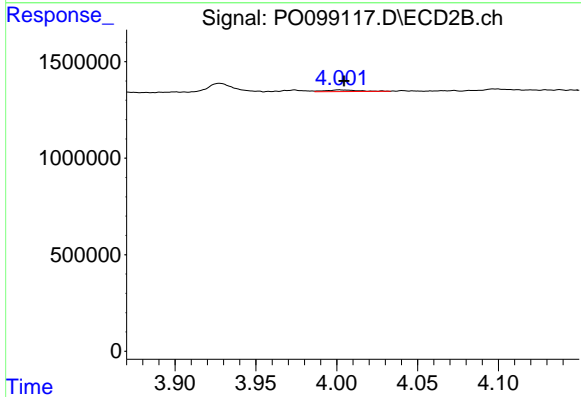
R.T.: 4.002 min
 Delta R.T.: -0.004 min
 Response: 115801
 Conc: 5.73 ng/ml



#11 AR-1232-1

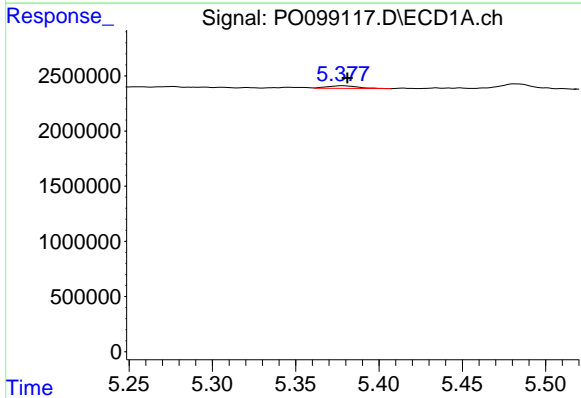
R.T.: 4.848 min
 Delta R.T.: -0.001 min
 Response: 550963
 Conc: 12.04 ng/ml

Instrument :
 ECD_O
 ClientSampleId :



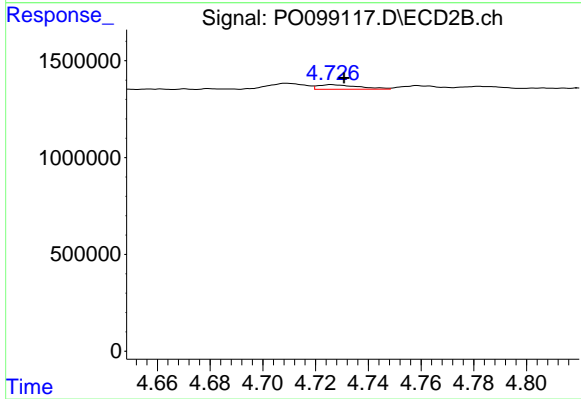
#11 AR-1232-1

R.T.: 4.002 min
 Delta R.T.: -0.003 min
 Response: 115801
 Conc: 6.76 ng/ml



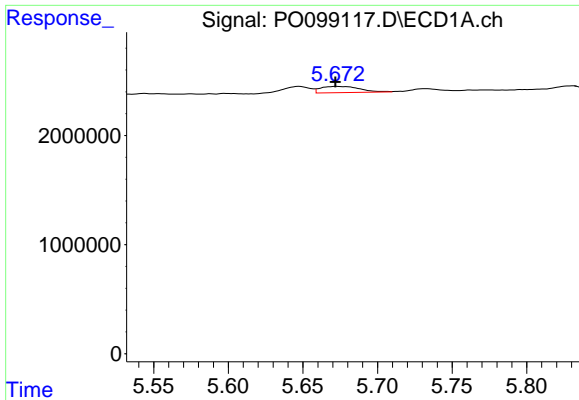
#12 AR-1232-2

R.T.: 5.378 min
 Delta R.T.: -0.003 min
 Response: 302501
 Conc: 12.81 ng/ml



#12 AR-1232-2

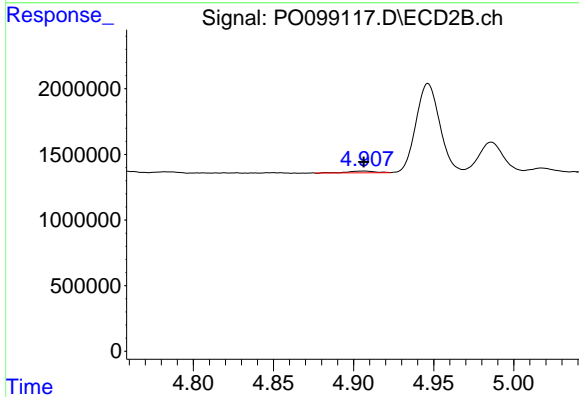
R.T.: 4.726 min
 Delta R.T.: -0.005 min
 Response: 258546
 Conc: 16.88 ng/ml



#13 AR-1232-3

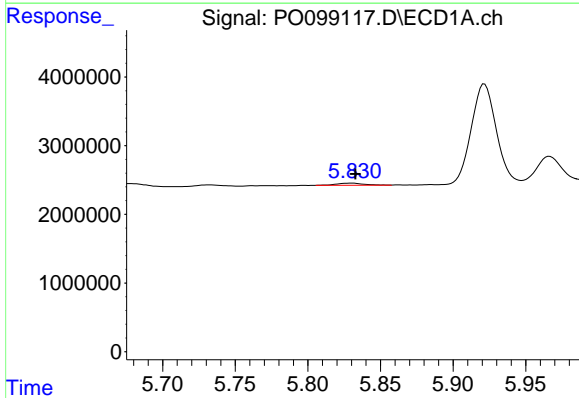
R.T.: 5.673 min
 Delta R.T.: 0.000 min
 Response: 1034782
 Conc: 26.20 ng/ml

Instrument :
 ECD_O
 ClientSampleId :



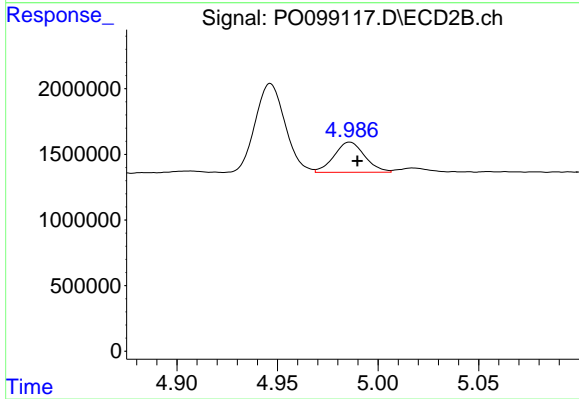
#13 AR-1232-3

R.T.: 4.906 min
 Delta R.T.: 0.000 min
 Response: 151567
 Conc: 18.94 ng/ml



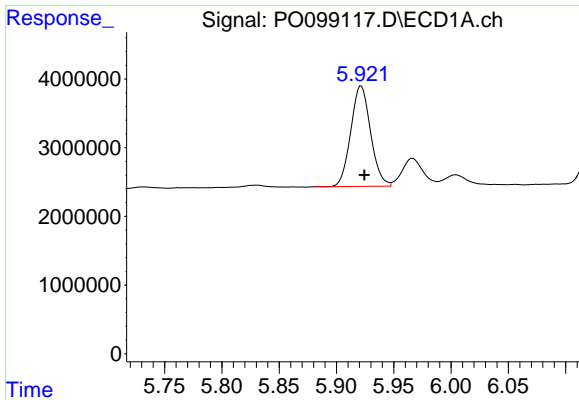
#14 AR-1232-4

R.T.: 5.831 min
 Delta R.T.: -0.002 min
 Response: 403285
 Conc: 21.14 ng/ml



#14 AR-1232-4

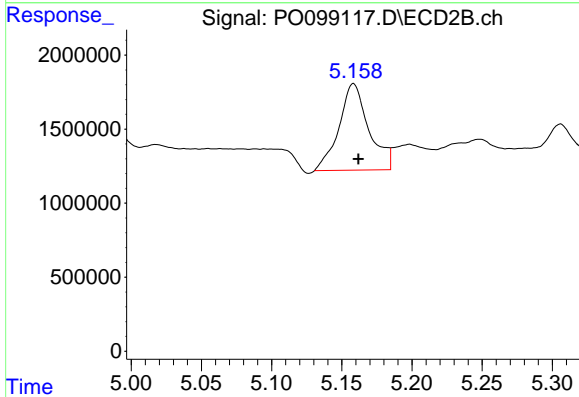
R.T.: 4.986 min
 Delta R.T.: -0.004 min
 Response: 2446386
 Conc: 317.97 ng/ml



#15 AR-1232-5

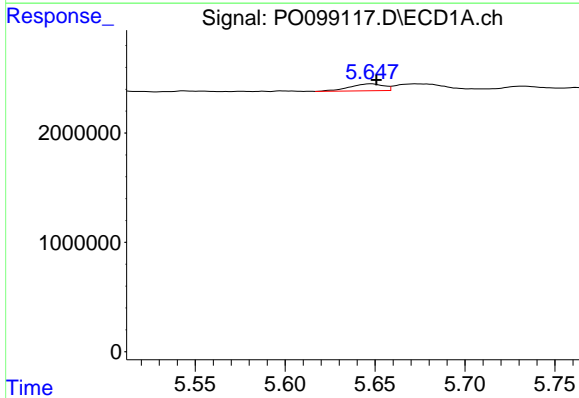
R.T.: 5.922 min
 Delta R.T.: -0.003 min
 Response: 17588619
 Conc: 1055.86 ng/ml

Instrument :
 ECD_O
 ClientSampleId :



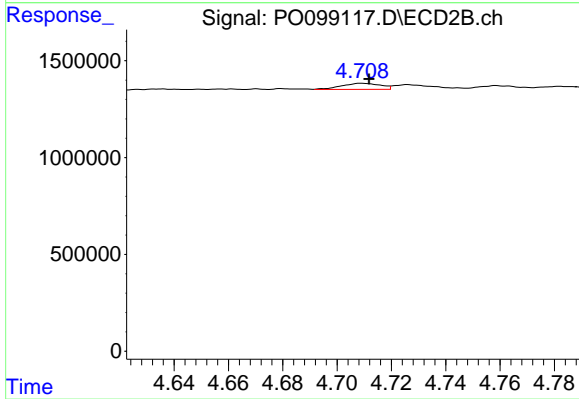
#15 AR-1232-5

R.T.: 5.158 min
 Delta R.T.: -0.003 min
 Response: 8641871
 Conc: 1016.02 ng/ml



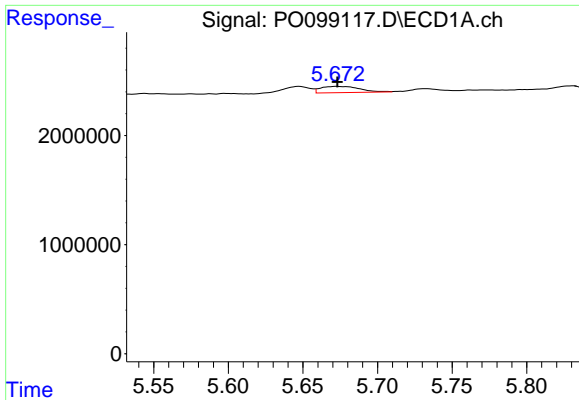
#16 AR-1242-1

R.T.: 5.648 min
 Delta R.T.: -0.003 min
 Response: 818200
 Conc: 18.90 ng/ml



#16 AR-1242-1

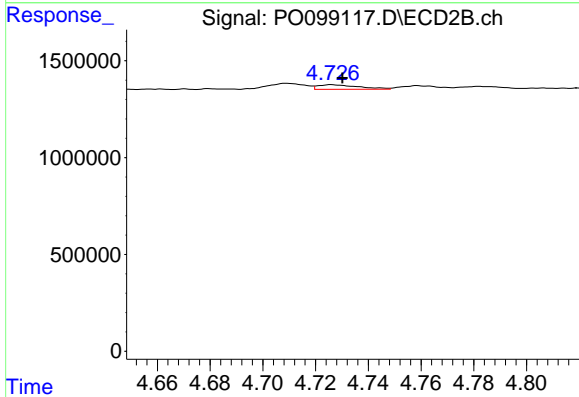
R.T.: 4.709 min
 Delta R.T.: -0.003 min
 Response: 319157
 Conc: 18.16 ng/ml



#17 AR-1242-2

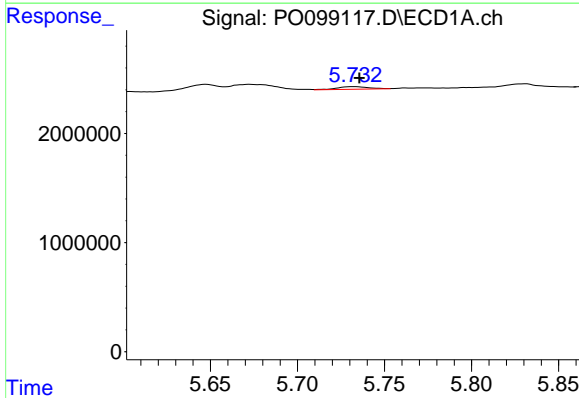
R.T.: 5.673 min
 Delta R.T.: 0.000 min
 Response: 1034782
 Conc: 16.16 ng/ml

Instrument :
 ECD_O
 ClientSampleId :



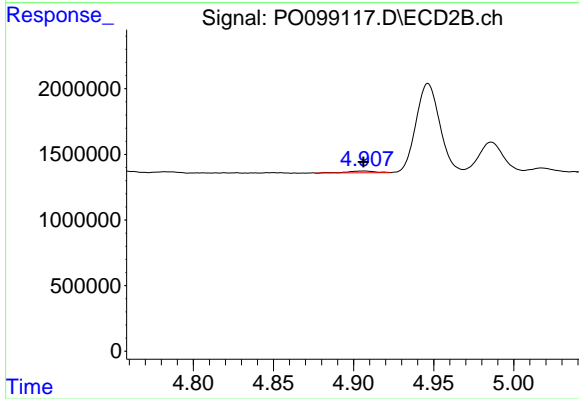
#17 AR-1242-2

R.T.: 4.726 min
 Delta R.T.: -0.004 min
 Response: 258546
 Conc: 10.67 ng/ml



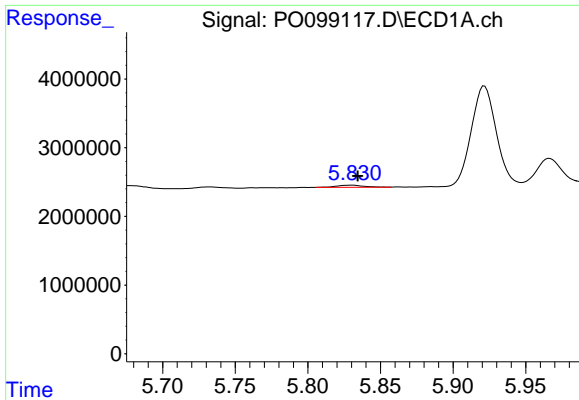
#18 AR-1242-3

R.T.: 5.732 min
 Delta R.T.: -0.003 min
 Response: 301062
 Conc: 7.48 ng/ml



#18 AR-1242-3

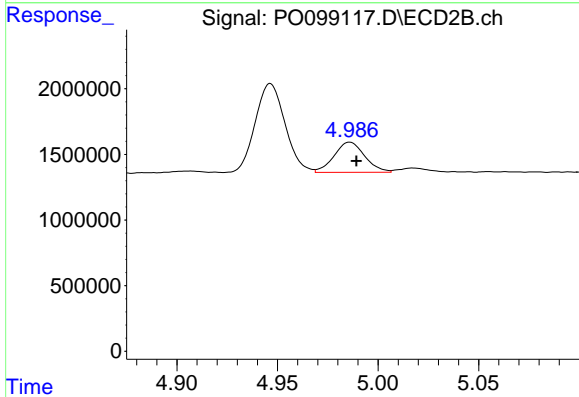
R.T.: 4.906 min
 Delta R.T.: 0.000 min
 Response: 151567
 Conc: 11.82 ng/ml



#19 AR-1242-4

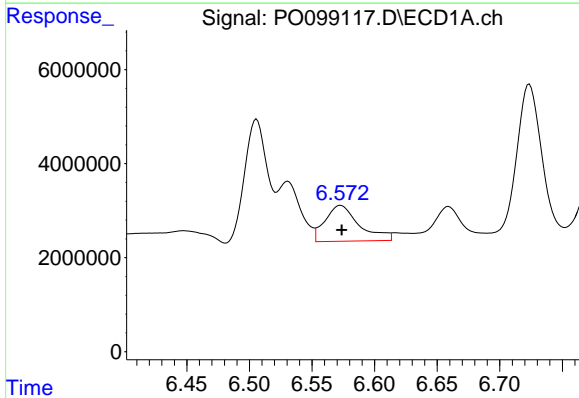
R.T.: 5.831 min
 Delta R.T.: -0.003 min
 Response: 403285
 Conc: 12.89 ng/ml

Instrument :
 ECD_O
 ClientSampleId :



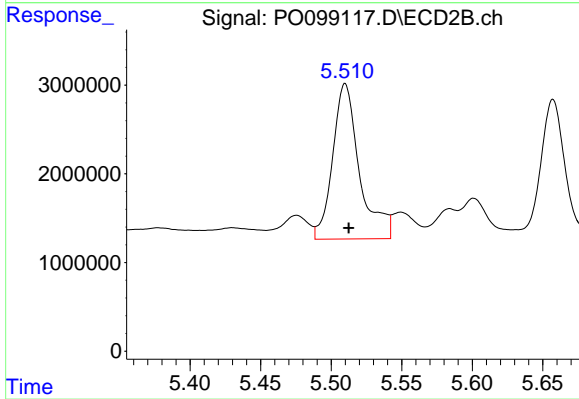
#19 AR-1242-4

R.T.: 4.986 min
 Delta R.T.: -0.003 min
 Response: 2446386
 Conc: 173.79 ng/ml



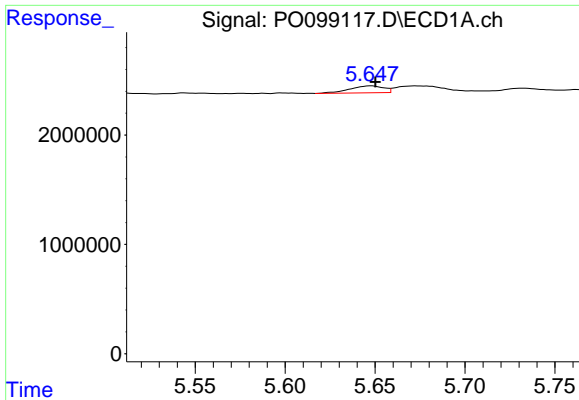
#20 AR-1242-5

R.T.: 6.573 min
 Delta R.T.: 0.000 min
 Response: 14545561
 Conc: 471.51 ng/ml



#20 AR-1242-5

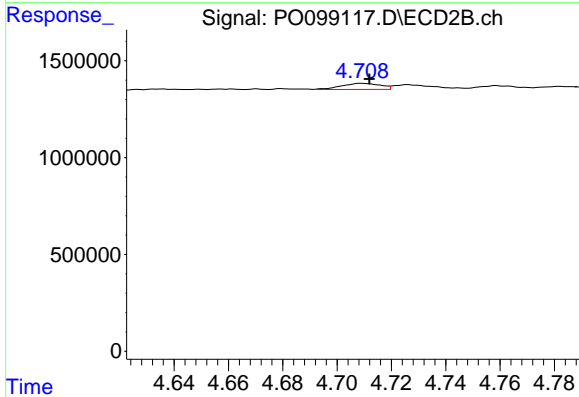
R.T.: 5.510 min
 Delta R.T.: -0.002 min
 Response: 23148220
 Conc: 1385.19 ng/ml



#21 AR-1248-1

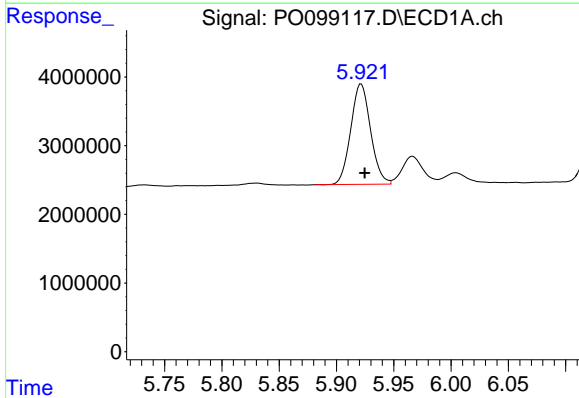
R.T.: 5.648 min
 Delta R.T.: -0.002 min
 Response: 818200
 Conc: 24.08 ng/ml

Instrument :
 ECD_O
 ClientSampleId :



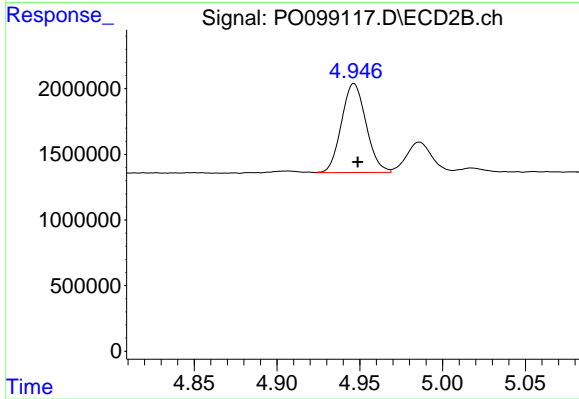
#21 AR-1248-1

R.T.: 4.709 min
 Delta R.T.: -0.003 min
 Response: 319157
 Conc: 23.03 ng/ml



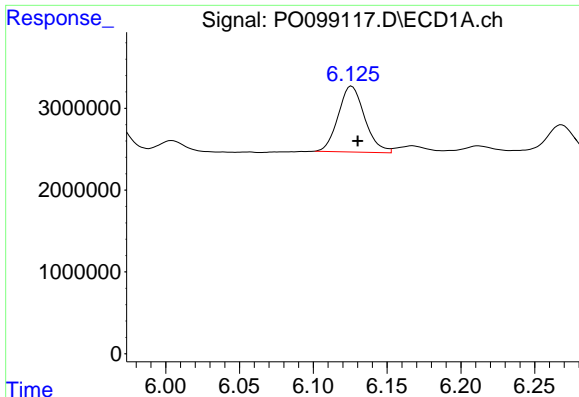
#22 AR-1248-2

R.T.: 5.922 min
 Delta R.T.: -0.003 min
 Response: 17588619
 Conc: 336.09 ng/ml



#22 AR-1248-2

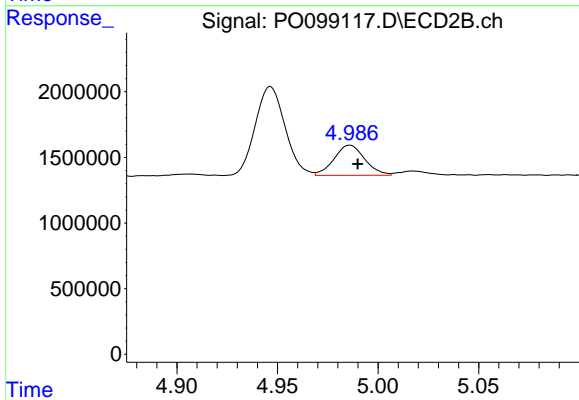
R.T.: 4.947 min
 Delta R.T.: -0.002 min
 Response: 7011981
 Conc: 353.01 ng/ml



#23 AR-1248-3

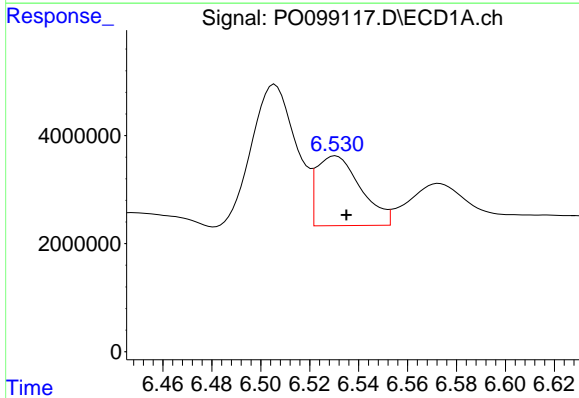
R.T.: 6.126 min
 Delta R.T.: -0.004 min
 Response: 10029307
 Conc: 176.02 ng/ml

Instrument :
 ECD_O
 ClientSampleId :



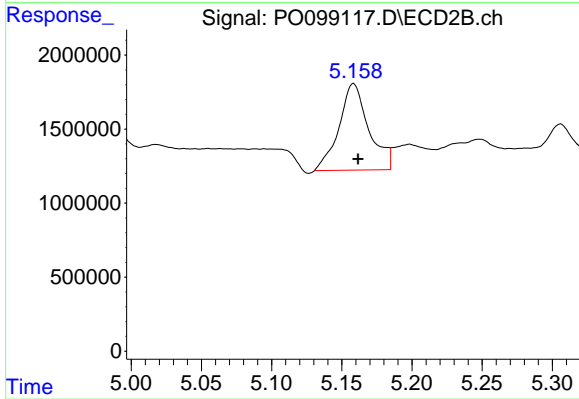
#23 AR-1248-3

R.T.: 4.986 min
 Delta R.T.: -0.004 min
 Response: 2446386
 Conc: 117.31 ng/ml



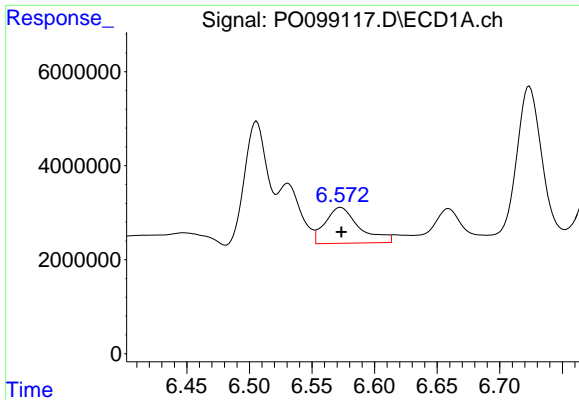
#24 AR-1248-4

R.T.: 6.531 min
 Delta R.T.: -0.004 min
 Response: 16148192
 Conc: 296.13 ng/ml



#24 AR-1248-4

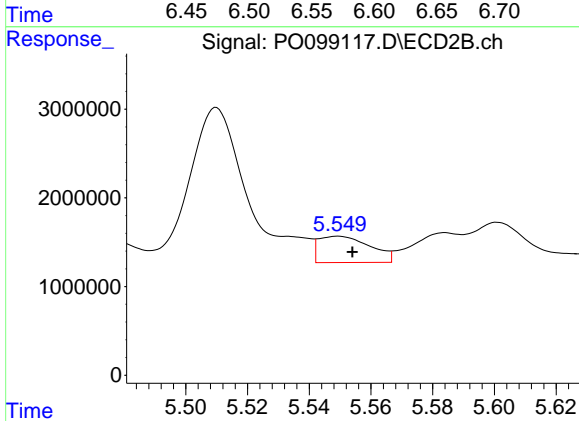
R.T.: 5.158 min
 Delta R.T.: -0.003 min
 Response: 8641871
 Conc: 351.53 ng/ml



#25 AR-1248-5

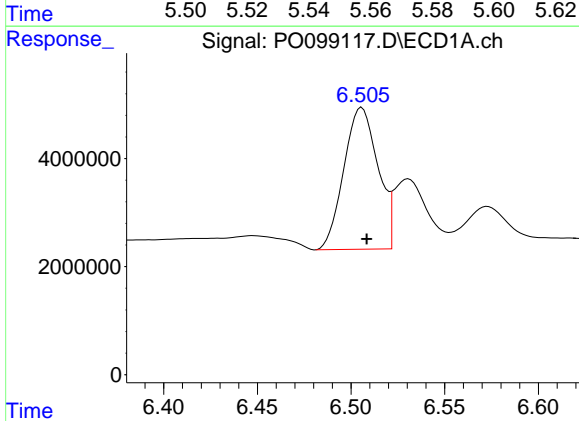
R.T.: 6.573 min
 Delta R.T.: 0.000 min
 Response: 14545561
 Conc: 256.06 ng/ml

Instrument :
 ECD_O
 ClientSampleId :



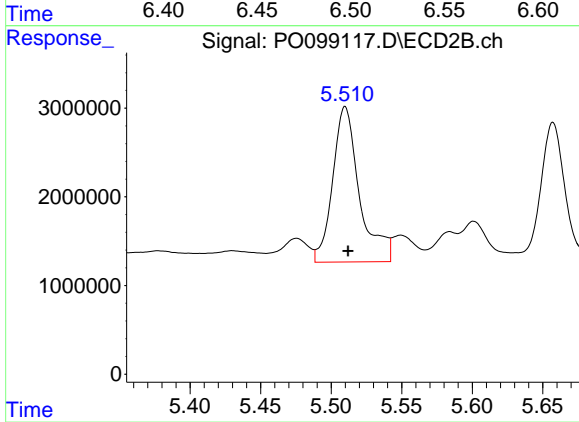
#25 AR-1248-5

R.T.: 5.549 min
 Delta R.T.: -0.004 min
 Response: 3448601
 Conc: 158.79 ng/ml



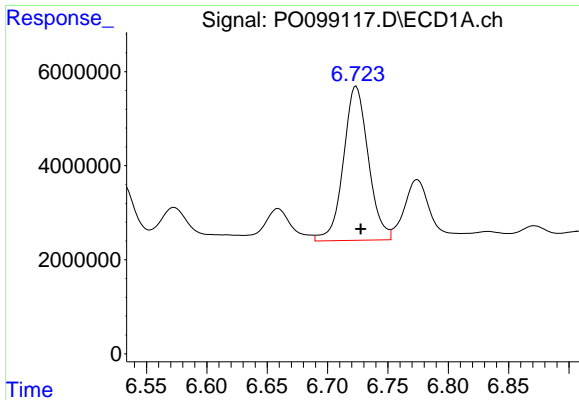
#26 AR-1254-1

R.T.: 6.506 min
 Delta R.T.: -0.003 min
 Response: 33273419
 Conc: 505.47 ng/ml



#26 AR-1254-1

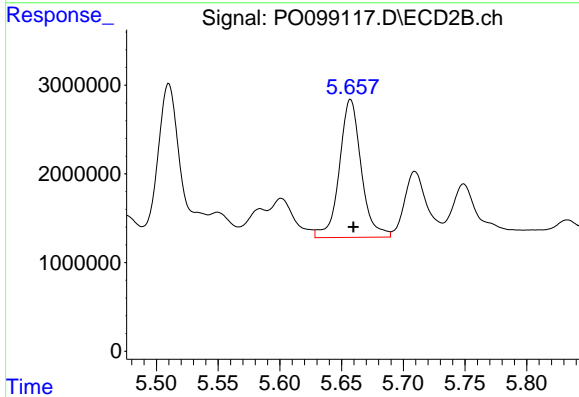
R.T.: 5.510 min
 Delta R.T.: -0.002 min
 Response: 23148220
 Conc: 653.29 ng/ml



#27 AR-1254-2

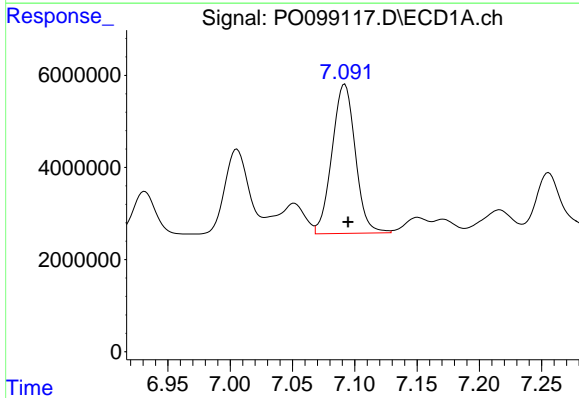
R.T.: 6.724 min
 Delta R.T.: -0.004 min
 Response: 47045815
 Conc: 488.69 ng/ml

Instrument :
 ECD_O
 ClientSampleId :



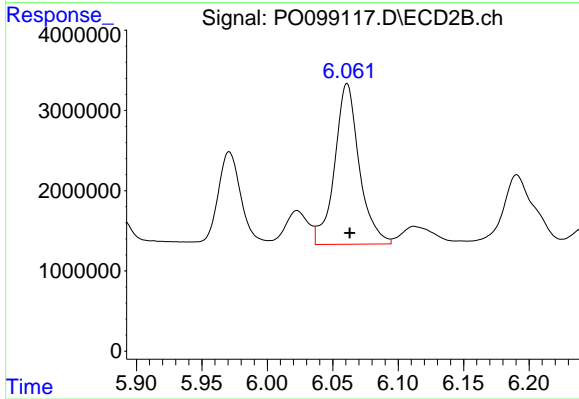
#27 AR-1254-2

R.T.: 5.657 min
 Delta R.T.: -0.002 min
 Response: 19181361
 Conc: 599.71 ng/ml



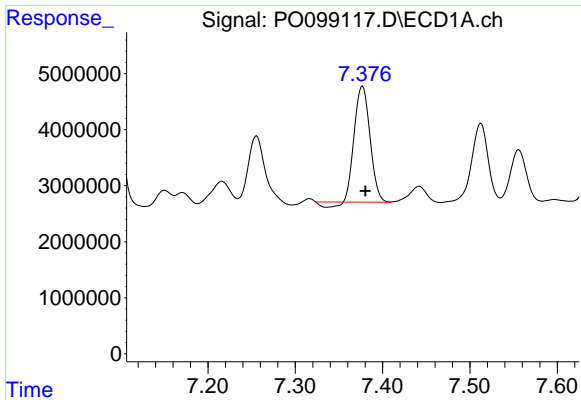
#28 AR-1254-3

R.T.: 7.092 min
 Delta R.T.: -0.003 min
 Response: 42245741
 Conc: 472.64 ng/ml



#28 AR-1254-3

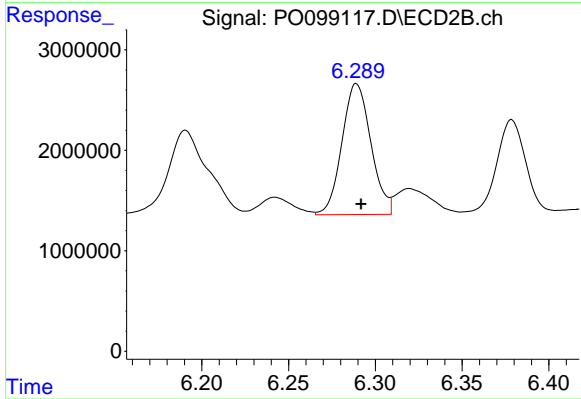
R.T.: 6.061 min
 Delta R.T.: -0.002 min
 Response: 26211681
 Conc: 536.16 ng/ml



#29 AR-1254-4

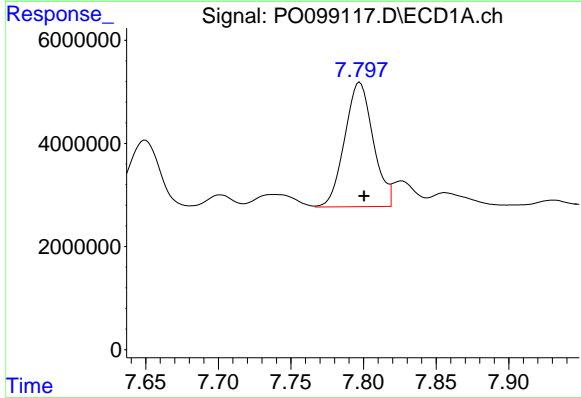
R.T.: 7.377 min
 Delta R.T.: -0.003 min
 Response: 25159654
 Conc: 459.26 ng/ml

Instrument :
 ECD_O
 ClientSampleId :



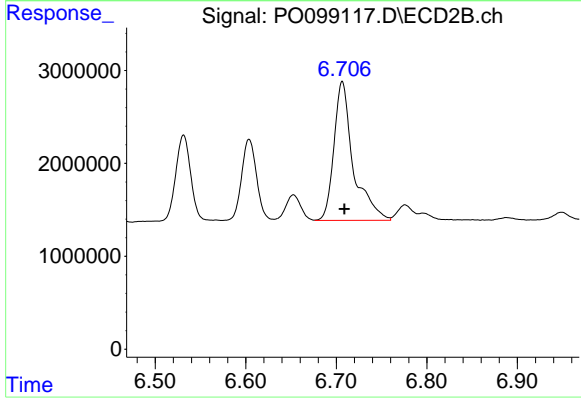
#29 AR-1254-4

R.T.: 6.289 min
 Delta R.T.: -0.003 min
 Response: 15163924
 Conc: 578.63 ng/ml



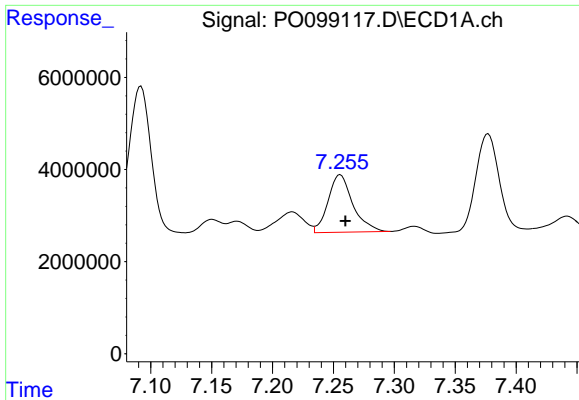
#30 AR-1254-5

R.T.: 7.797 min
 Delta R.T.: -0.003 min
 Response: 32863883
 Conc: 488.07 ng/ml



#30 AR-1254-5

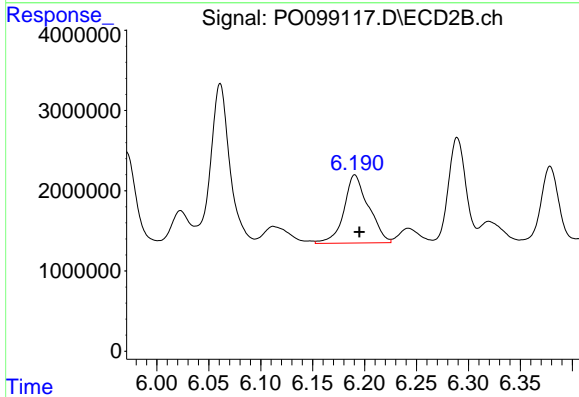
R.T.: 6.707 min
 Delta R.T.: -0.002 min
 Response: 22170711
 Conc: 525.94 ng/ml



#31 AR-1260-1

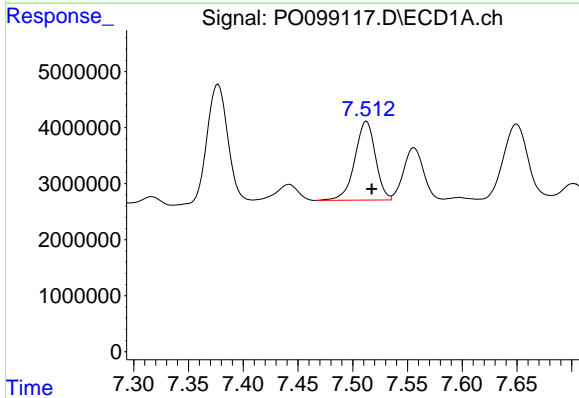
R.T.: 7.256 min
 Delta R.T.: -0.004 min
 Response: 17720596
 Conc: 247.28 ng/ml

Instrument :
 ECD_O
 ClientSampleId :



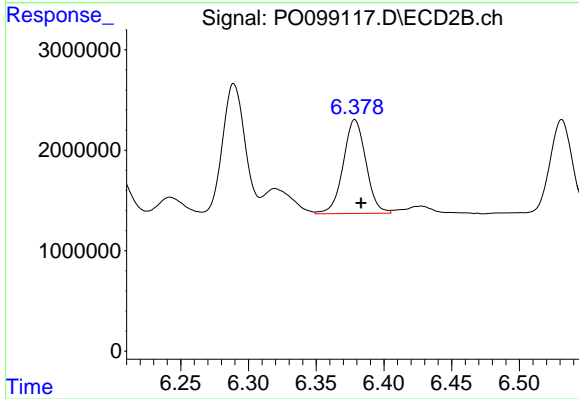
#31 AR-1260-1

R.T.: 6.191 min
 Delta R.T.: -0.004 min
 Response: 13975025
 Conc: 396.17 ng/ml



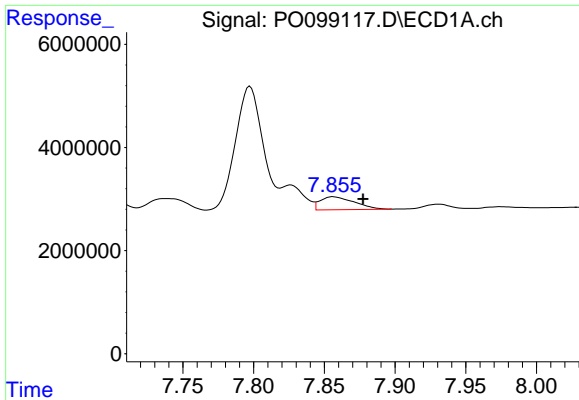
#32 AR-1260-2

R.T.: 7.513 min
 Delta R.T.: -0.005 min
 Response: 18409712
 Conc: 233.34 ng/ml



#32 AR-1260-2

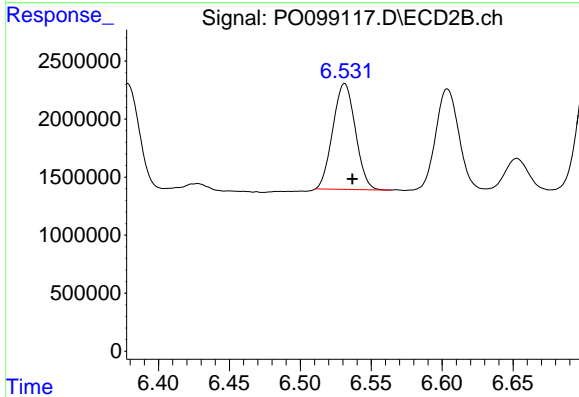
R.T.: 6.379 min
 Delta R.T.: -0.005 min
 Response: 10899137
 Conc: 271.89 ng/ml



#33 AR-1260-3

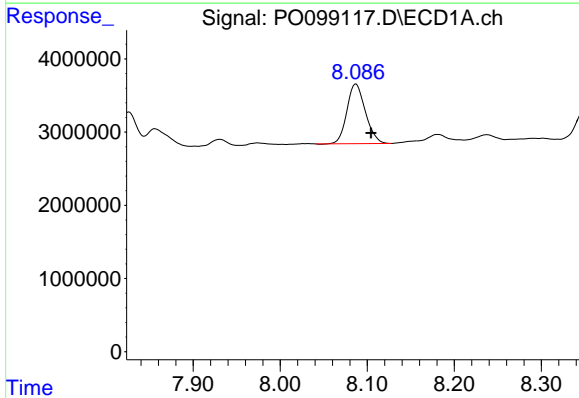
R.T.: 7.856 min
 Delta R.T.: -0.021 min
 Response: 4278367
 Conc: 78.34 ng/ml

Instrument :
 ECD_O
 ClientSampleId :



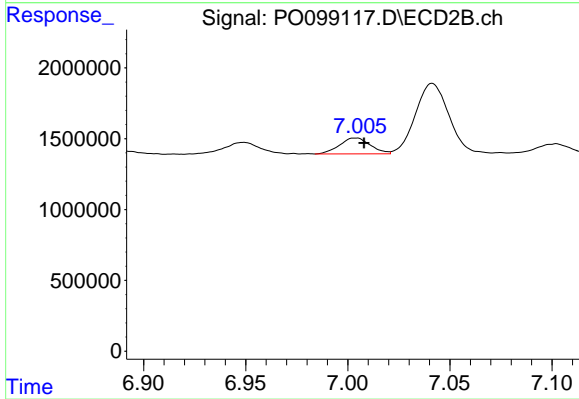
#33 AR-1260-3

R.T.: 6.531 min
 Delta R.T.: -0.005 min
 Response: 10122436
 Conc: 267.70 ng/ml



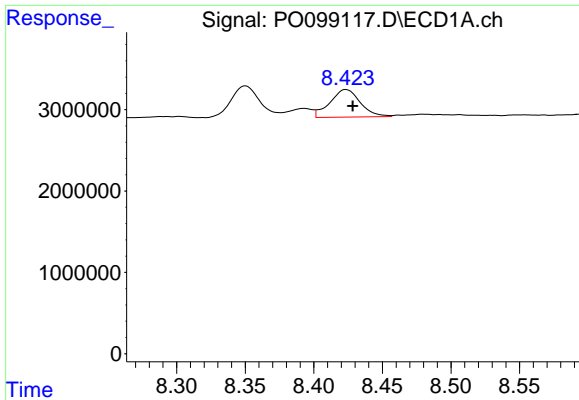
#34 AR-1260-4

R.T.: 8.087 min
 Delta R.T.: -0.017 min
 Response: 11968499
 Conc: 191.02 ng/ml



#34 AR-1260-4

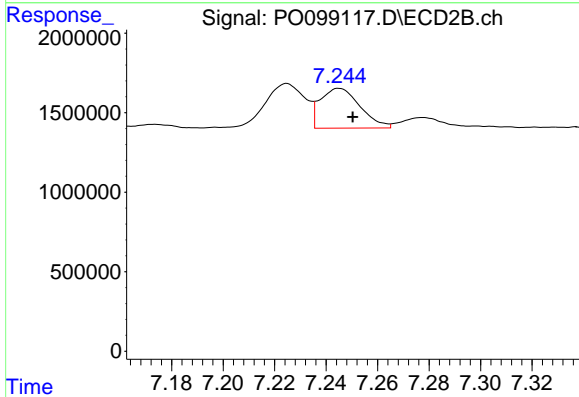
R.T.: 7.004 min
 Delta R.T.: -0.004 min
 Response: 1182888
 Conc: 40.94 ng/ml



#35 AR-1260-5

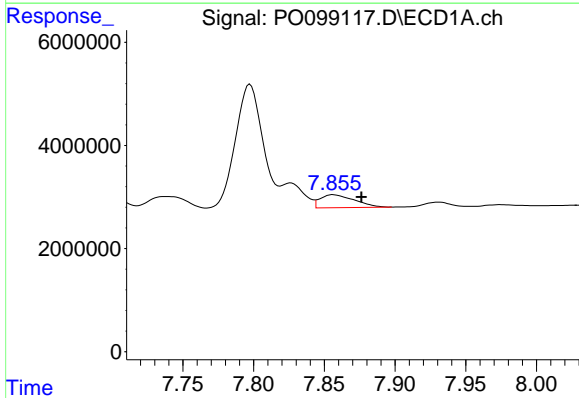
R.T.: 8.424 min
 Delta R.T.: -0.005 min
 Response: 5255864
 Conc: 49.11 ng/ml

Instrument :
 ECD_O
 ClientSampleId :



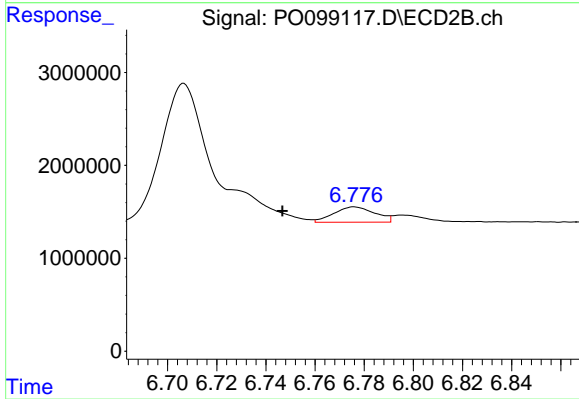
#35 AR-1260-5

R.T.: 7.245 min
 Delta R.T.: -0.005 min
 Response: 2692261
 Conc: 44.74 ng/ml



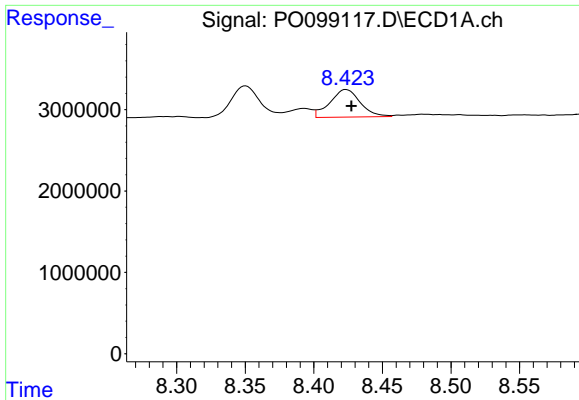
#36 AR-1262-1

R.T.: 7.856 min
 Delta R.T.: -0.020 min
 Response: 4278367
 Conc: 47.27 ng/ml



#36 AR-1262-1

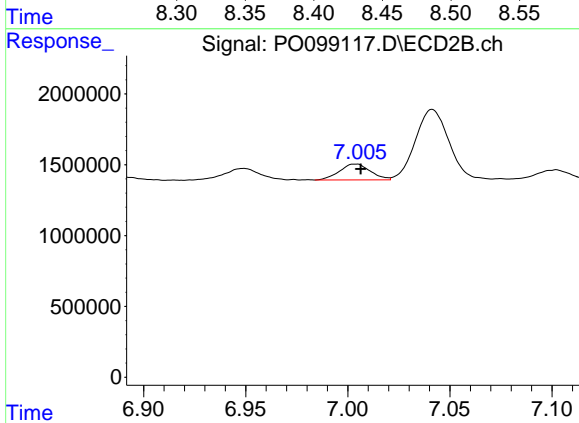
R.T.: 6.776 min
 Delta R.T.: 0.029 min
 Response: 1921081
 Conc: 40.94 ng/ml



#37 AR-1262-2

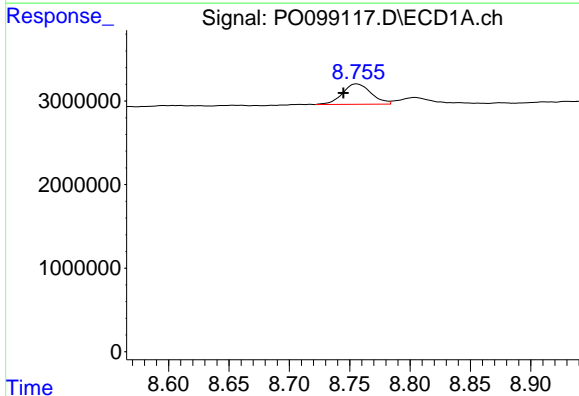
R.T.: 8.424 min
 Delta R.T.: -0.004 min
 Response: 5255864
 Conc: 39.43 ng/ml

Instrument :
 ECD_O
 ClientSampleId :



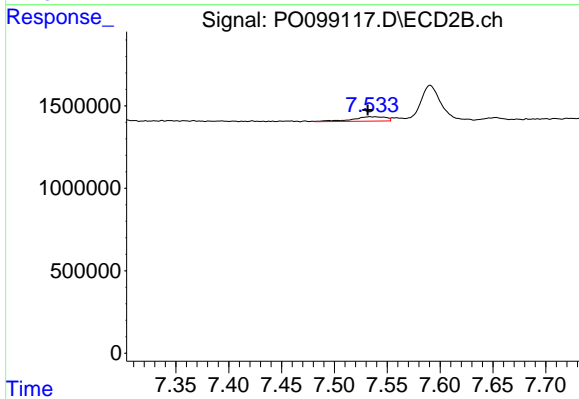
#37 AR-1262-2

R.T.: 7.004 min
 Delta R.T.: -0.003 min
 Response: 1182888
 Conc: 28.49 ng/ml



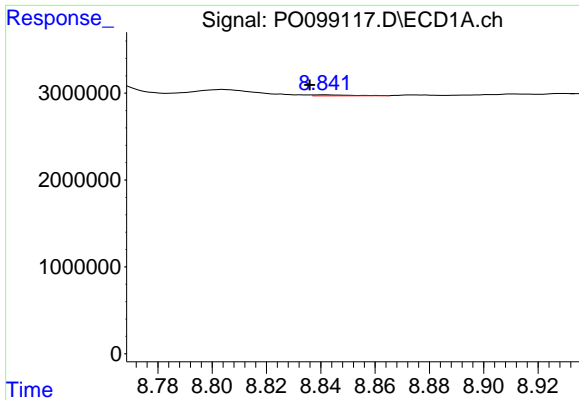
#38 AR-1262-3

R.T.: 8.756 min
 Delta R.T.: 0.011 min
 Response: 4027371
 Conc: 40.96 ng/ml



#38 AR-1262-3

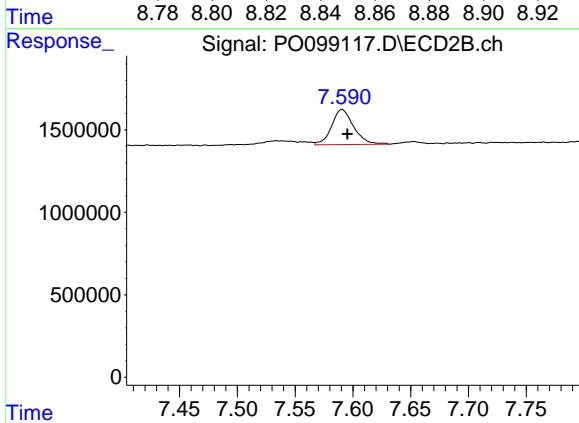
R.T.: 7.533 min
 Delta R.T.: 0.002 min
 Response: 586278
 Conc: 18.35 ng/ml



#39 AR-1262-4

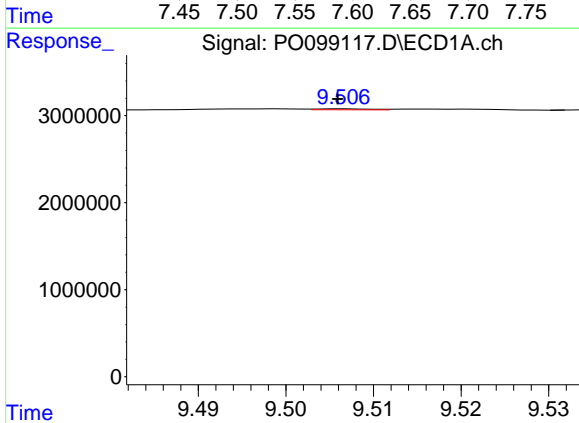
R.T.: 8.841 min
 Delta R.T.: 0.005 min
 Response: 105877
 Conc: 1.32 ng/ml

Instrument :
 ECD_O
 ClientSampleId :



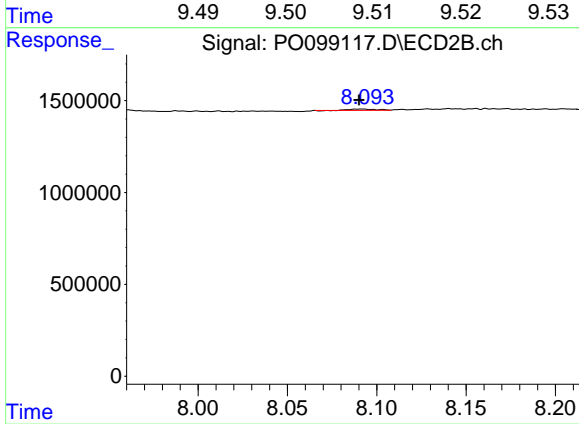
#39 AR-1262-4

R.T.: 7.591 min
 Delta R.T.: -0.005 min
 Response: 2836397
 Conc: 51.59 ng/ml



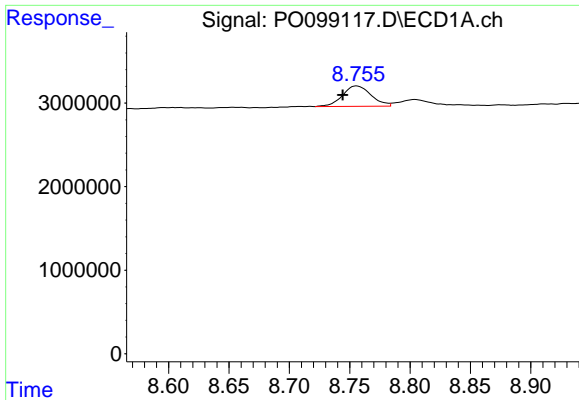
#40 AR-1262-5

R.T.: 9.507 min
 Delta R.T.: 0.000 min
 Response: 50473
 Conc: 1.15 ng/ml



#40 AR-1262-5

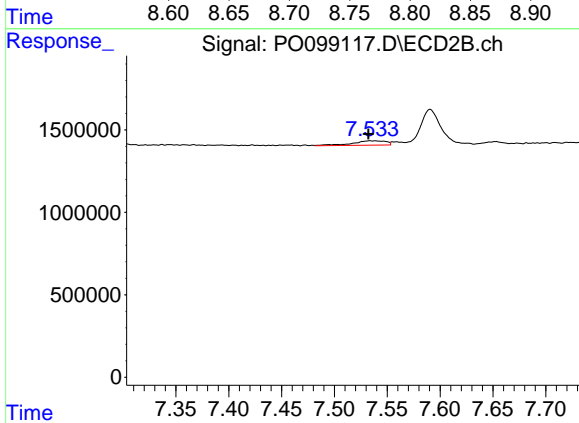
R.T.: 8.092 min
 Delta R.T.: 0.002 min
 Response: 62562
 Conc: 2.49 ng/ml



#41 AR-1268-1

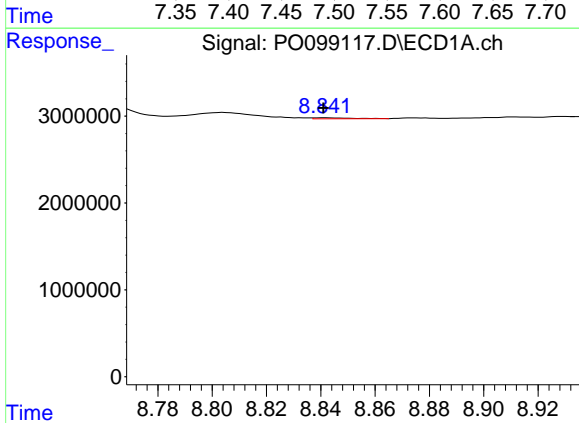
R.T.: 8.756 min
 Delta R.T.: 0.011 min
 Response: 4027371
 Conc: 23.38 ng/ml

Instrument :
 ECD_O
 ClientSampleId :



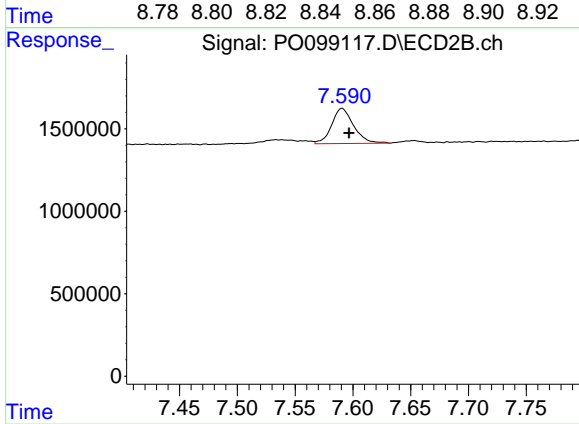
#41 AR-1268-1

R.T.: 7.533 min
 Delta R.T.: 0.001 min
 Response: 586278
 Conc: 6.57 ng/ml



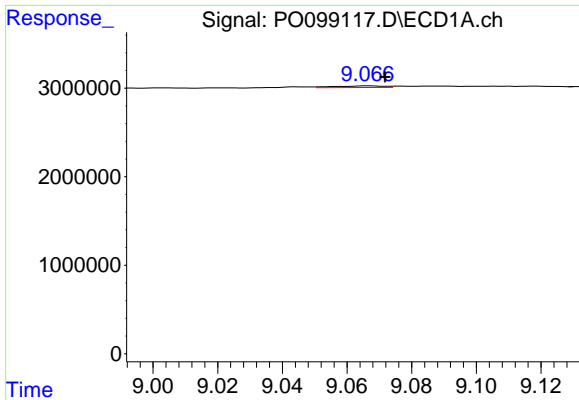
#42 AR-1268-2

R.T.: 8.841 min
 Delta R.T.: 0.000 min
 Response: 105877
 Conc: 0.68 ng/ml



#42 AR-1268-2

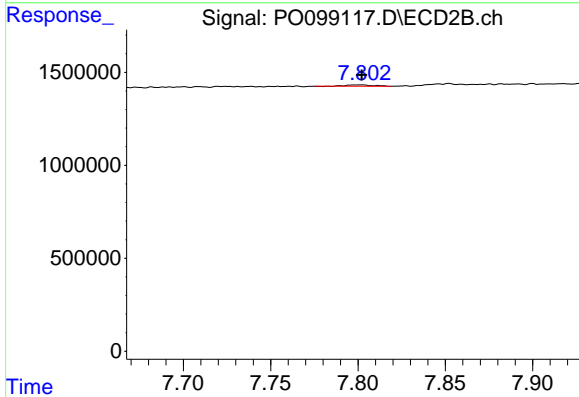
R.T.: 7.591 min
 Delta R.T.: -0.006 min
 Response: 2836397
 Conc: 35.92 ng/ml



#43 AR-1268-3

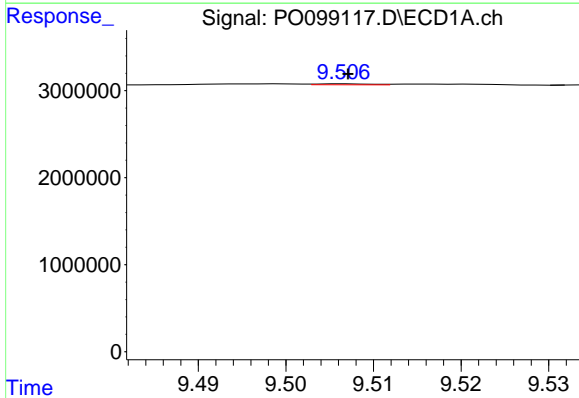
R.T.: 9.066 min
 Delta R.T.: -0.005 min
 Response: 206142
 Conc: 1.47 ng/ml

Instrument :
 ECD_O
 ClientSampleId :



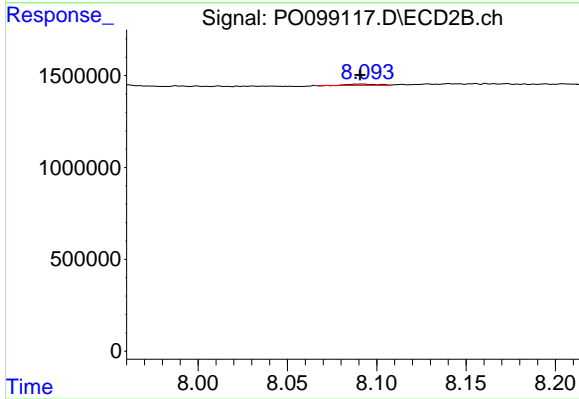
#43 AR-1268-3

R.T.: 7.802 min
 Delta R.T.: 0.000 min
 Response: 75000
 Conc: 1.07 ng/ml



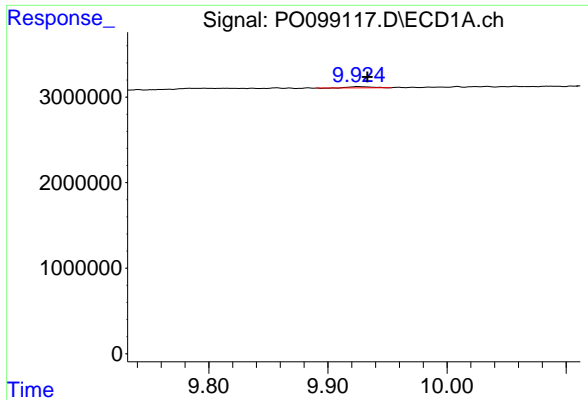
#44 AR-1268-4

R.T.: 9.507 min
 Delta R.T.: 0.000 min
 Response: 50473
 Conc: 1.01 ng/ml



#44 AR-1268-4

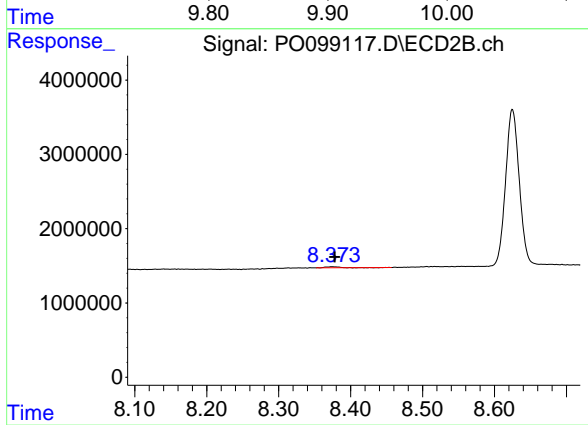
R.T.: 8.092 min
 Delta R.T.: 0.001 min
 Response: 62562
 Conc: 2.27 ng/ml



#45 AR-1268-5

R.T.: 9.925 min
Delta R.T.: -0.008 min
Response: 185006
Conc: 0.45 ng/ml

Instrument :
ECD_O
ClientSampleId :



#45 AR-1268-5

R.T.: 8.374 min
Delta R.T.: -0.004 min
Response: 164531
Conc: 0.86 ng/ml