

Data Path : Z:\pestpcbsrv\HPCHEM1\ECD_0\Data\PO102818\
 Data File : PO050672.D
 Signal(s) : Signal #1: ECD1A.CH Signal #2: ECD2B.CH
 Acq On : 27 Oct 2018 14:42
 Operator : SM/SJ
 Sample : J5689-01 10X
 Misc :
 ALS Vial : 12 Sample Multiplier: 1

Instrument :
 ECD_O
 ClientSampled :

Integration File signal 1: autoint1.e
 Integration File signal 2: autoint2.e
 Quant Time: Oct 29 02:02:08 2018
 Quant Method : Z:\pestpcbsrv\HPCHEM1\ECD_0\methods\PO101818.M
 Quant Title : GC EXTRACTABLES
 QLast Update : Fri Oct 19 02:02:26 2018
 Response via : Initial Calibration
 Integrator: ChemStation 6890 Scale Mode: Small noise peaks clipped

Volume Inj. : 2 µl
 Signal #1 Phase : ZB-MR1 Signal #2 Phase: ZB-MR2
 Signal #1 Info : 30Mx0.32mmx 0.50µ Signal #2 Info : 30M x 0.32mm x 0.25µm

Compound	RT#1	RT#2	Resp#1	Resp#2	ng/ml	ng/ml
System Monitoring Compounds						
1) SA Tetrachlo...	0.000	3.353	0	188776	N.D.	0.960 #
2) SA Decachlor...	0.000	8.102	0	609270	N.D.	3.187 #
Target Compounds						
3) L1 AR-1016-1	0.000	4.397	0	229938	N.D.	29.751 #
4) L1 AR-1016-2	0.000	4.397	0	229938	N.D.	17.048 #
6) L1 AR-1016-4	5.730	4.581	2142600	-417787	242.379	N.D. #
7) L1 AR-1016-5	6.071	4.794	1738355	1673062	203.757	241.586
8) L2 AR-1221-1	0.000	3.578	0	1572397	N.D.	727.895 #
9) L2 AR-1221-2	0.000	3.645	0	226993	N.D.	141.608 #
10) L2 AR-1221-3	0.000	3.750	0	1027384	N.D.	195.822 #
11) L3 AR-1232-1	0.000	3.750	0	1027384	N.D.	265.827 #
12) L3 AR-1232-2	0.000	4.397	0	229938	N.D.	46.854 #
14) L3 AR-1232-4	5.730	4.641	2142600	2954976	690.939	1442.085 #
15) L3 AR-1232-5	0.000	4.794	0	1673062	N.D.	759.698 #
16) L4 AR-1242-1	0.000	4.397	0	229938	N.D.	47.067 #
17) L4 AR-1242-2	0.000	4.397	0	229938	N.D.	26.353 #
19) L4 AR-1242-4	5.730	4.641	2142600	2954976	390.673	676.380 #
20) L4 AR-1242-5	0.000	5.162	0	2696065	N.D.	483.263 #
21) L5 AR-1248-1	0.000	4.397	0	229938	N.D.	52.939 #
23) L5 AR-1248-3	6.071	4.641	1738355	2954976	168.411	444.634 #
24) L5 AR-1248-4	0.000	4.794	0	1673062	N.D.	204.892 #
25) L5 AR-1248-5	0.000	5.162	0	2696065	N.D.	340.955 #
26) L6 AR-1254-1	0.000	5.162	0	2696065	N.D.	185.973 #
27) L6 AR-1254-2	0.000	5.262	0	2641514	N.D.	207.899 #
28) L6 AR-1254-3	0.000	5.679	0	4062240	N.D.	198.260 #
29) L6 AR-1254-4	0.000	5.884	0	1547293	N.D.	132.867 #
30) L6 AR-1254-5	0.000	6.283	0	1925433	N.D.	110.229 #
31) L7 AR-1260-1	0.000	5.798	0	2694841	N.D.	177.880 #
32) L7 AR-1260-2	0.000	5.958	0	1864745	N.D.	100.803 #
33) L7 AR-1260-3	0.000	6.117	0	2264344	N.D.	132.301 #
34) L7 AR-1260-4	7.979	6.592	2232509	914639	137.876	67.463 #
35) L7 AR-1260-5	0.000	6.807	0	180289	N.D.	5.900 #
36) L8 AR-1262-1	0.000	6.343	0	1231790	N.D.	77.965 #
37) L8 AR-1262-2	0.000	6.807	0	180289	N.D.	7.041 #
39) L8 AR-1262-4	0.000	7.140	0	331471	N.D.	17.668 #
40) L8 AR-1262-5	0.000	7.638	0	506739	N.D.	64.523 #
42) L9 AR-1268-2	0.000	7.140	0	331471	N.D.	10.584 #
43) L9 AR-1268-3	0.000	7.338	0	868656	N.D.	32.137 #
44) L9 AR-1268-4	0.000	7.638	0	506739	N.D.	51.945 #
45) L9 AR-1268-5	0.000	7.902	0	287058	N.D.	3.787 #

Data Path : Z:\pestpcbsrv\HPCHEM1\ECD_0\Data\PO102818\
Data File : PO050672.D
Signal(s) : Signal #1: ECD1A.CH Signal #2: ECD2B.CH
Acq On : 27 Oct 2018 14:42
Operator : SM/SJ
Sample : J5689-01 10X
Misc :
ALS Vial : 12 Sample Multiplier: 1

Instrument :
ECD_O
ClientSampleId :

Integration File signal 1: autoint1.e
Integration File signal 2: autoint2.e
Quant Time: Oct 29 02:02:08 2018
Quant Method : Z:\pestpcbsrv\HPCHEM1\ECD_0\methods\PO101818.M
Quant Title : GC EXTRACTABLES
QLast Update : Fri Oct 19 02:02:26 2018
Response via : Initial Calibration
Integrator: ChemStation 6890 Scale Mode: Small noise peaks clipped

Volume Inj. : 2 µl
Signal #1 Phase : ZB-MR1 Signal #2 Phase: ZB-MR2
Signal #1 Info : 30Mx0.32mmx 0.50µ Signal #2 Info : 30M x 0.32mm x 0.25µm

Compound	RT#1	RT#2	Resp#1	Resp#2	ng/ml	ng/ml
----------	------	------	--------	--------	-------	-------

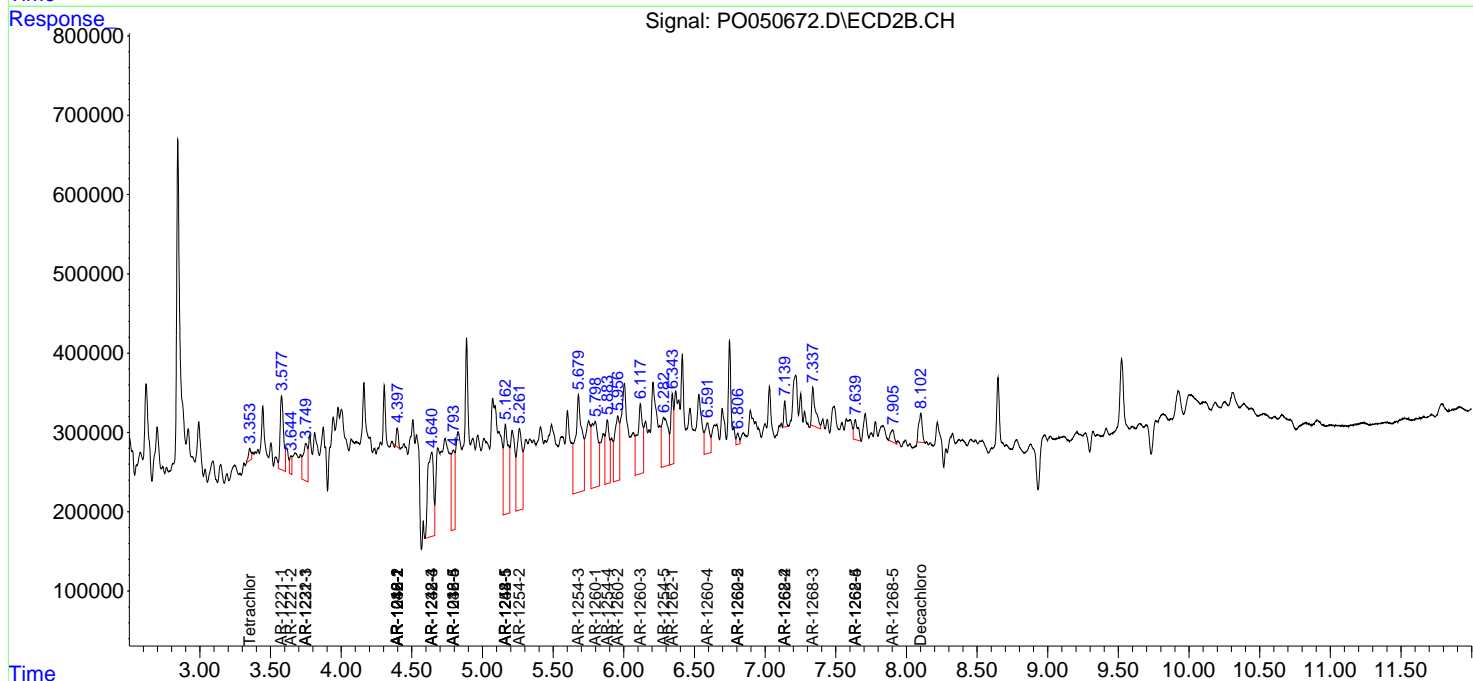
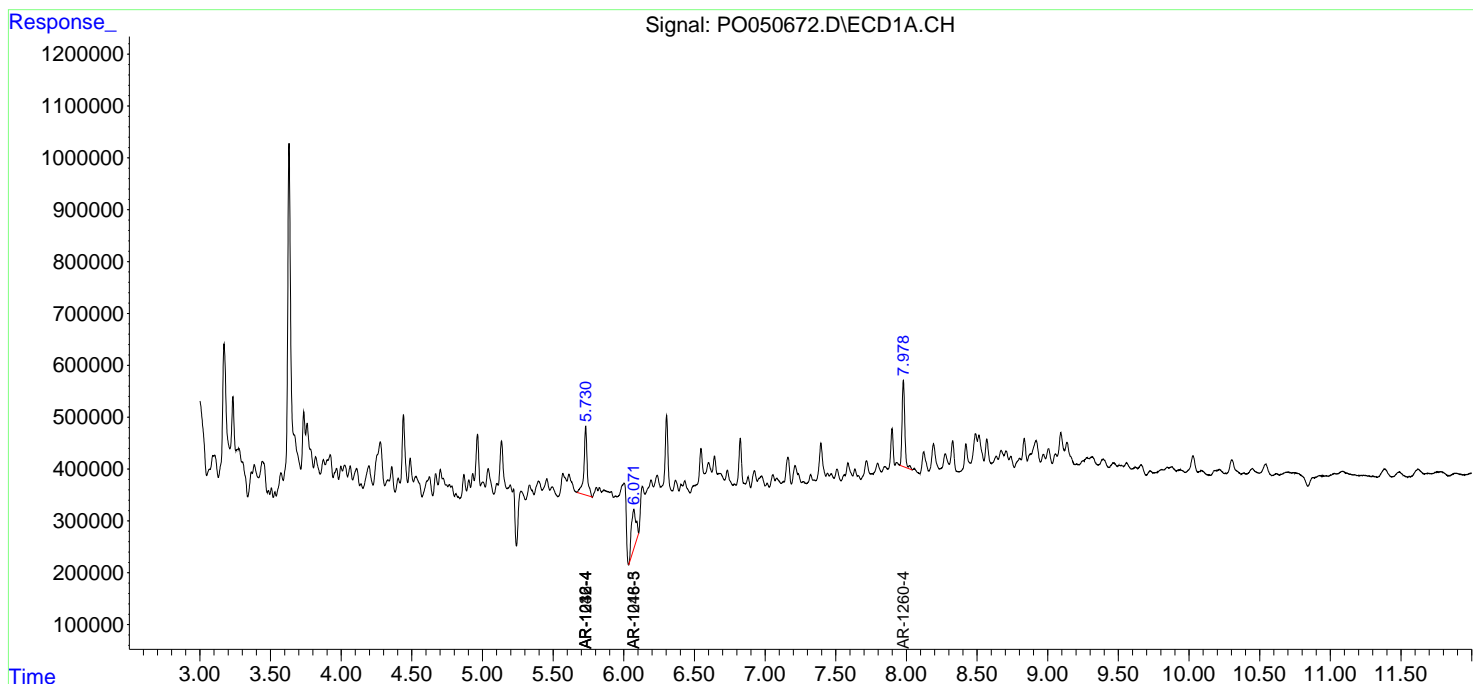
(f)=RT Delta > 1/2 Window (#)=Amounts differ by > 25% (m)=manual int.

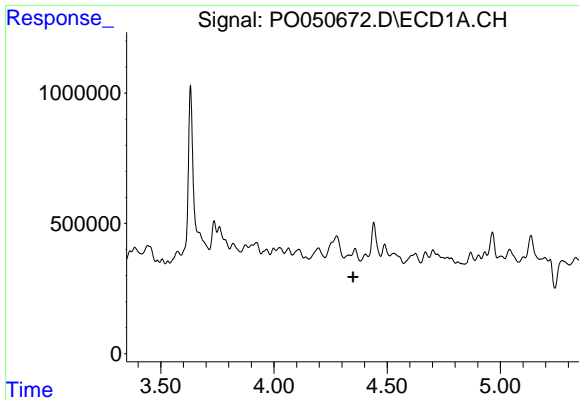
Data Path : Z:\pestpcbsrv\HPCHEM1\ECD_O\Data\PO102818\
 Data File : PO050672.D
 Signal(s) : Signal #1: ECD1A.CH Signal #2: ECD2B.CH
 Acq On : 27 Oct 2018 14:42
 Operator : SM/SJ
 Sample : J5689-01 10X
 Misc :
 ALS Vial : 12 Sample Multiplier: 1

Instrument :
 ECD_O
 ClientSampled :

Integration File signal 1: autoint1.e
 Integration File signal 2: autoint2.e
 Quant Time: Oct 29 02:02:08 2018
 Quant Method : Z:\pestpcbsrv\HPCHEM1\ECD_O\methods\PO101818.M
 Quant Title : GC EXTRACTABLES
 QLast Update : Fri Oct 19 02:02:26 2018
 Response via : Initial Calibration
 Integrator: ChemStation 6890 Scale Mode: Small noise peaks clipped

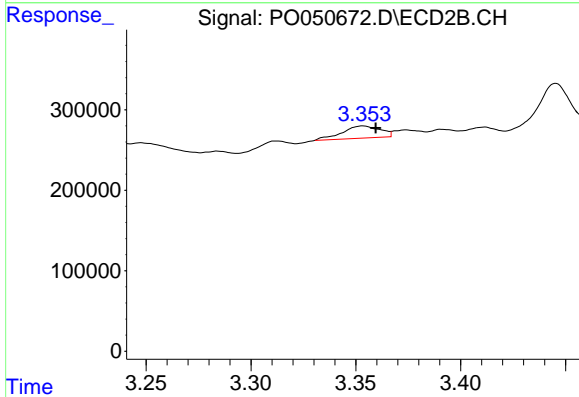
Volume Inj. : 2 µl
 Signal #1 Phase : ZB-MR1 Signal #2 Phase: ZB-MR2
 Signal #1 Info : 30Mx0.32mmx 0.50µ Signal #2 Info : 30M x 0.32mm x 0.25µm



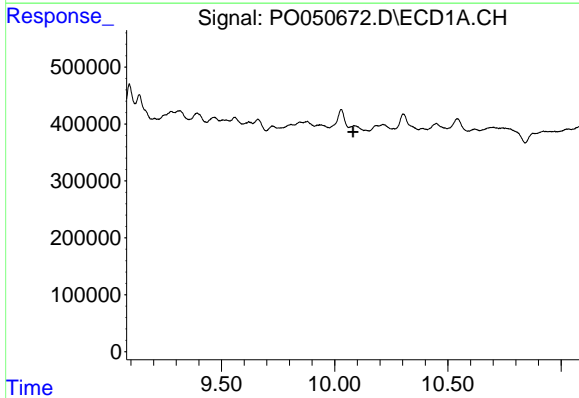


#1 Tetrachloro-m-xylene
 R.T.: 0.000 min
 Exp R.T. : 4.349 min
 Response: 0
 Conc: N.D.

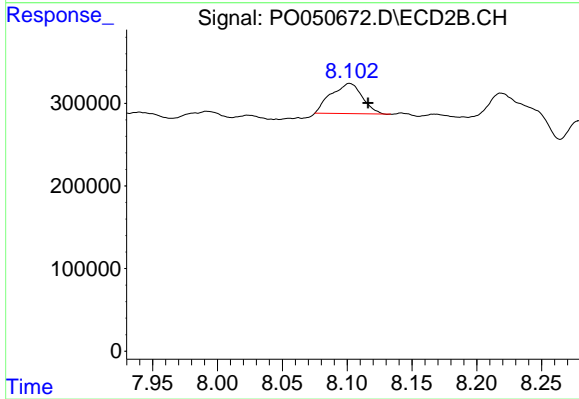
Instrument :
 ECD_O
 ClientSampleId :



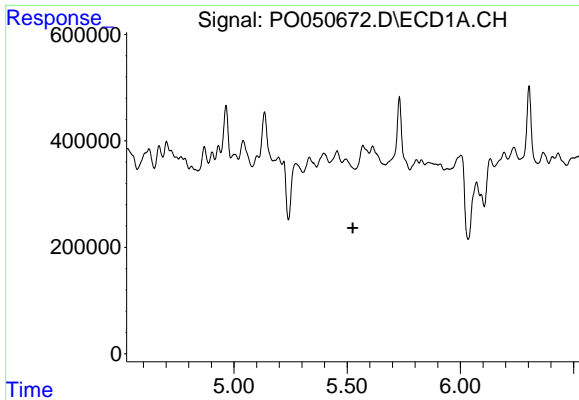
#1 Tetrachloro-m-xylene
 R.T.: 3.353 min
 Delta R.T.: -0.006 min
 Response: 188776
 Conc: 0.96 ng/ml



#2 Decachlorobiphenyl
 R.T.: 0.000 min
 Exp R.T. : 10.081 min
 Response: 0
 Conc: N.D.



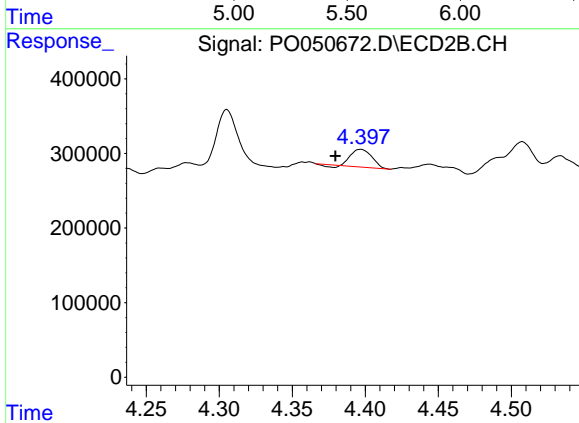
#2 Decachlorobiphenyl
 R.T.: 8.102 min
 Delta R.T.: -0.014 min
 Response: 609270
 Conc: 3.19 ng/ml



#3 AR-1016-1

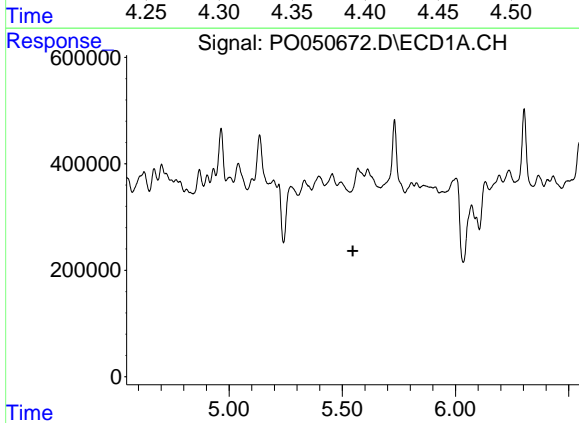
R.T.: 0.000 min
 Exp R.T.: 5.525 min
 Response: 0
 Conc: N.D.

Instrument :
 ECD_O
 ClientSampled :



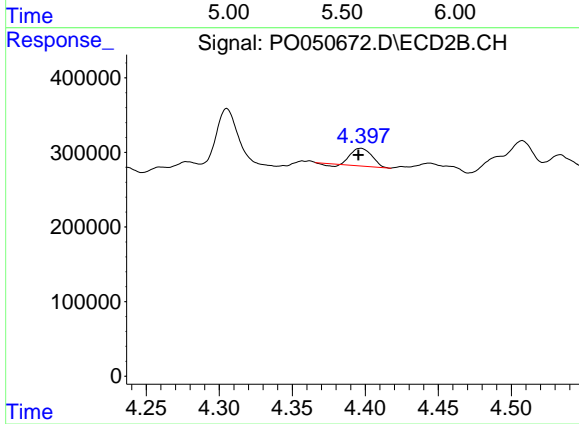
#3 AR-1016-1

R.T.: 4.397 min
 Delta R.T.: 0.017 min
 Response: 229938
 Conc: 29.75 ng/ml



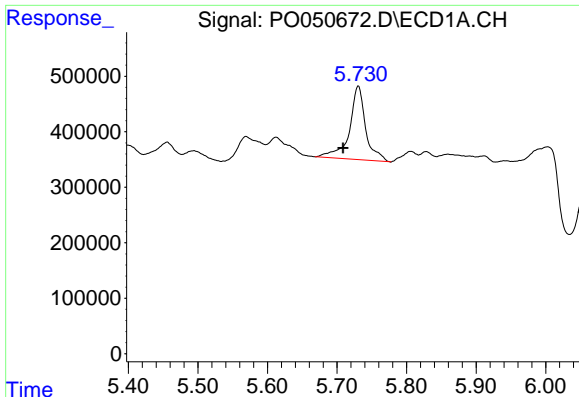
#4 AR-1016-2

R.T.: 0.000 min
 Exp R.T.: 5.547 min
 Response: 0
 Conc: N.D.



#4 AR-1016-2

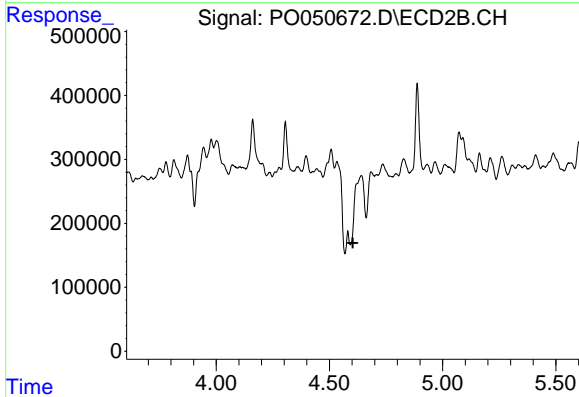
R.T.: 4.397 min
 Delta R.T.: 0.002 min
 Response: 229938
 Conc: 17.05 ng/ml



#6 AR-1016-4

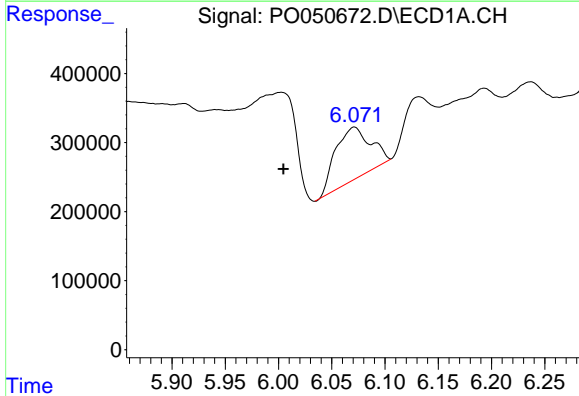
R.T.: 5.730 min
 Delta R.T.: 0.022 min
 Response: 2142600
 Conc: 242.38 ng/ml

Instrument :
 ECD_O
 ClientSampled :



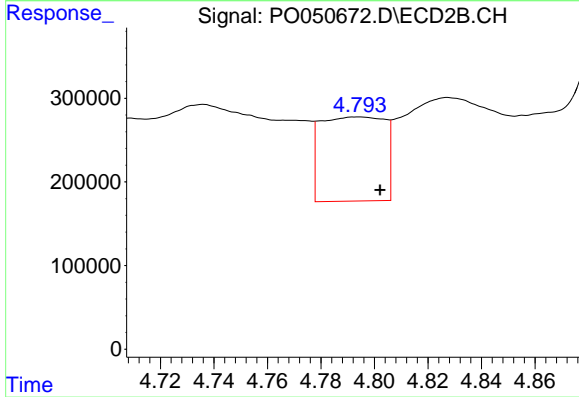
#6 AR-1016-4

R.T.: 4.581 min
 Delta R.T.: -0.022 min
 Response: -417787
 Conc: N.D.



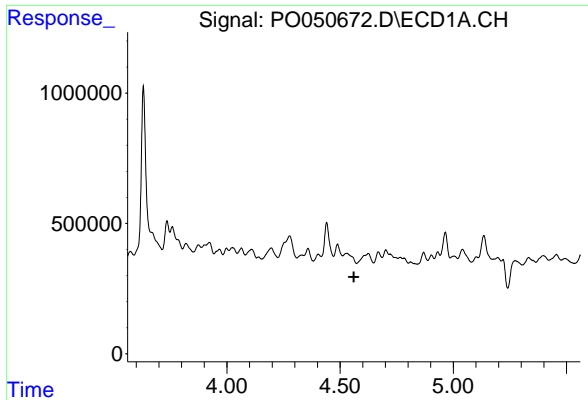
#7 AR-1016-5

R.T.: 6.071 min
 Delta R.T.: 0.066 min
 Response: 1738355
 Conc: 203.76 ng/ml



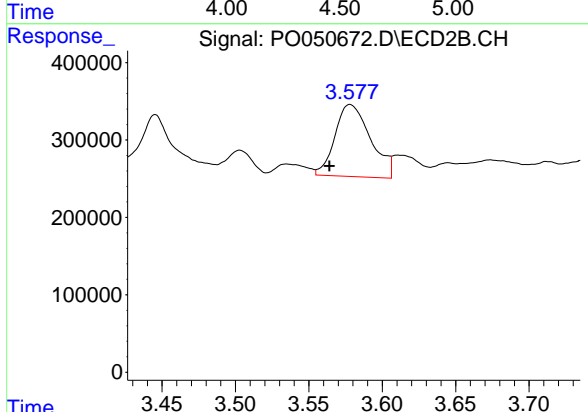
#7 AR-1016-5

R.T.: 4.794 min
 Delta R.T.: -0.008 min
 Response: 1673062
 Conc: 241.59 ng/ml

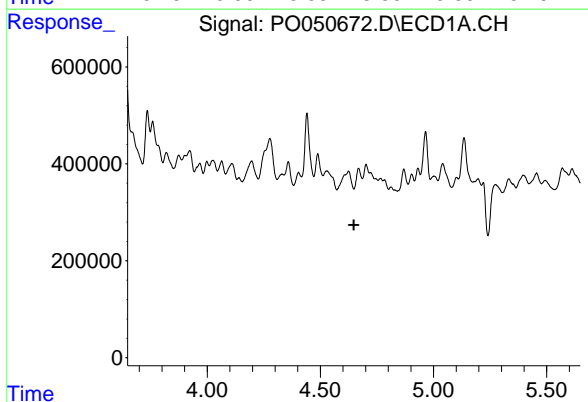


#8 AR-1221-1
 R.T.: 0.000 min
 Exp R.T. : 4.561 min
 Response: 0
 Conc: N.D.

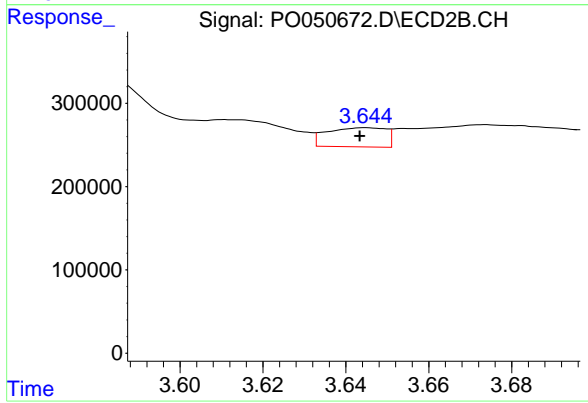
Instrument :
 ECD_O
 ClientSampled :



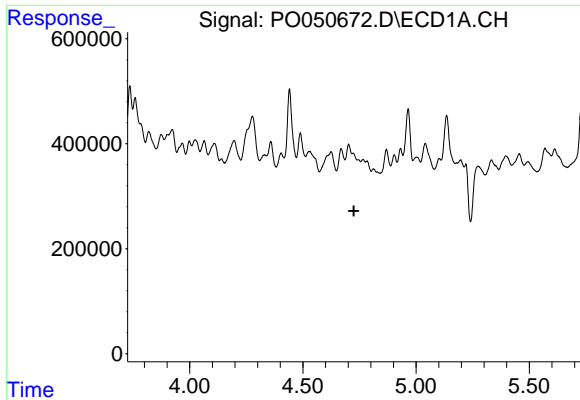
#8 AR-1221-1
 R.T.: 3.578 min
 Delta R.T.: 0.014 min
 Response: 1572397
 Conc: 727.89 ng/ml



#9 AR-1221-2
 R.T.: 0.000 min
 Exp R.T. : 4.648 min
 Response: 0
 Conc: N.D.



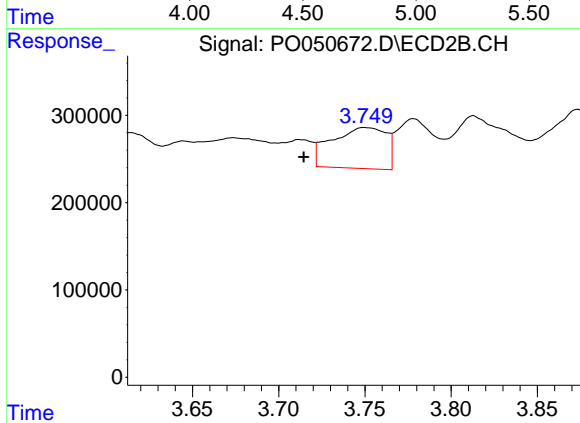
#9 AR-1221-2
 R.T.: 3.645 min
 Delta R.T.: 0.001 min
 Response: 226993
 Conc: 141.61 ng/ml



#10 AR-1221-3

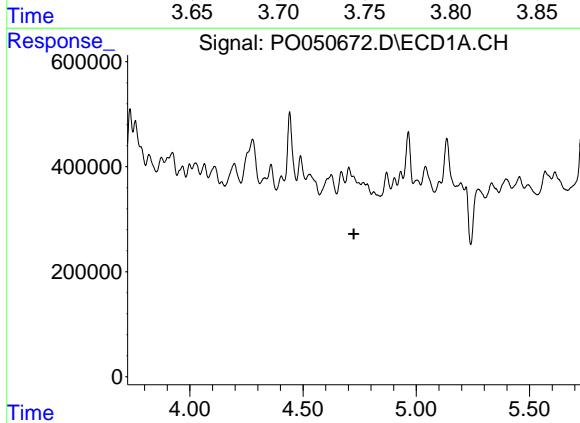
R.T.: 0.000 min
 Exp R.T.: 4.725 min
 Response: 0
 Conc: N.D.

Instrument :
 ECD_O
 ClientSampleId :



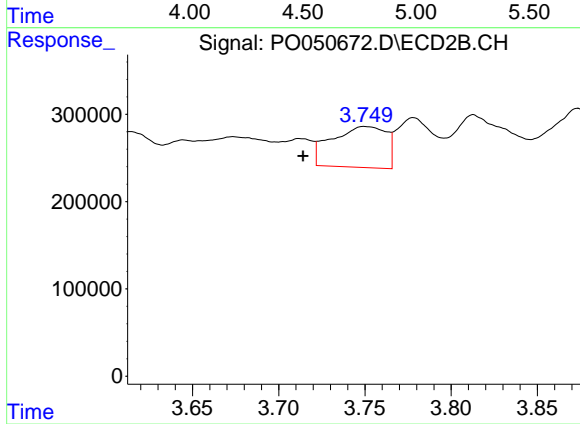
#10 AR-1221-3

R.T.: 3.750 min
 Delta R.T.: 0.035 min
 Response: 1027384
 Conc: 195.82 ng/ml



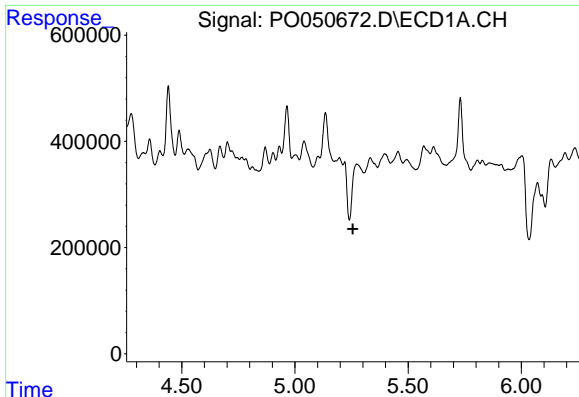
#11 AR-1232-1

R.T.: 0.000 min
 Exp R.T.: 4.725 min
 Response: 0
 Conc: N.D.



#11 AR-1232-1

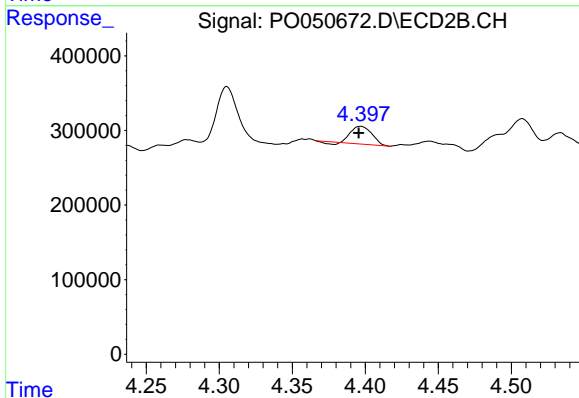
R.T.: 3.750 min
 Delta R.T.: 0.036 min
 Response: 1027384
 Conc: 265.83 ng/ml



#12 AR-1232-2

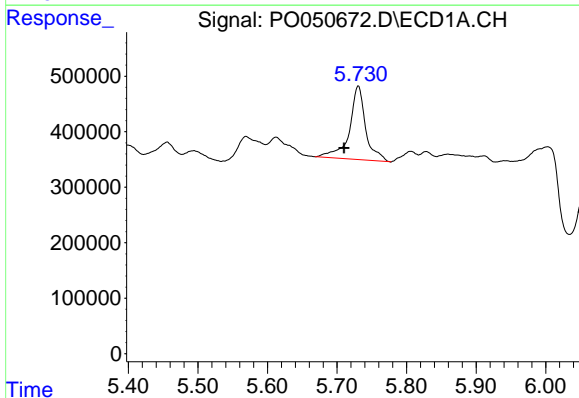
R.T.: 0.000 min
 Exp R.T.: 5.256 min
 Response: 0
 Conc: N.D.

Instrument :
 ECD_O
 ClientSampleId :



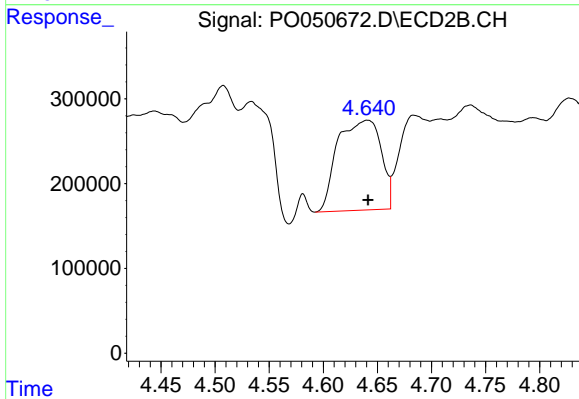
#12 AR-1232-2

R.T.: 4.397 min
 Delta R.T.: 0.001 min
 Response: 229938
 Conc: 46.85 ng/ml



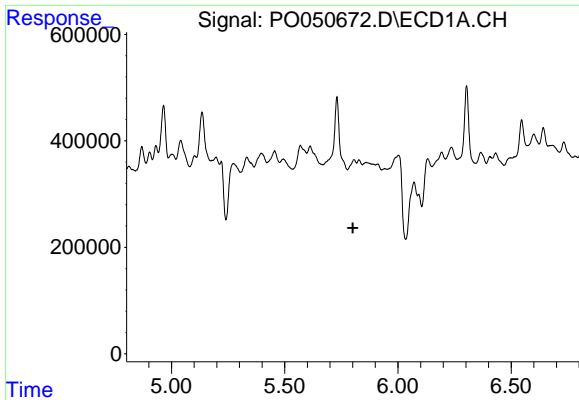
#14 AR-1232-4

R.T.: 5.730 min
 Delta R.T.: 0.021 min
 Response: 2142600
 Conc: 690.94 ng/ml



#14 AR-1232-4

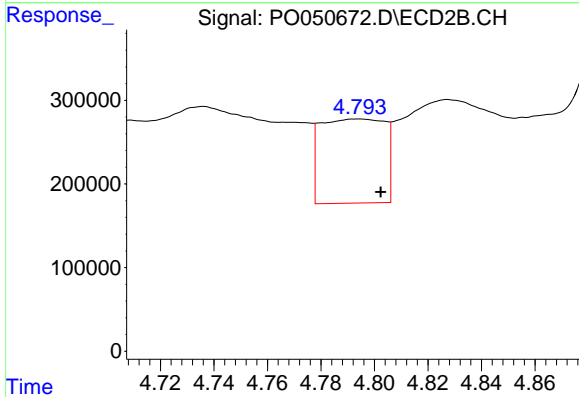
R.T.: 4.641 min
 Delta R.T.: 0.000 min
 Response: 2954976
 Conc: 1442.08 ng/ml



#15 AR-1232-5

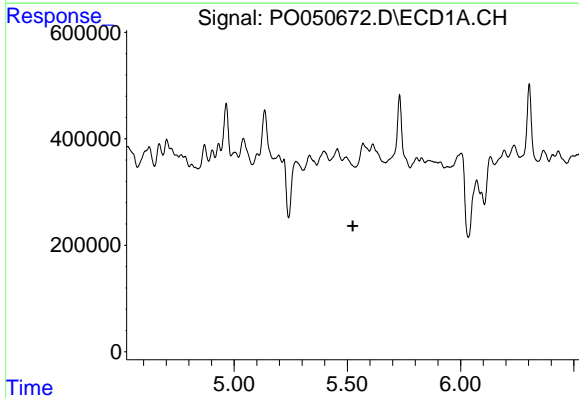
R.T.: 0.000 min
 Exp R.T.: 5.801 min
 Response: 0
 Conc: N.D.

Instrument :
 ECD_O
 ClientSampled :



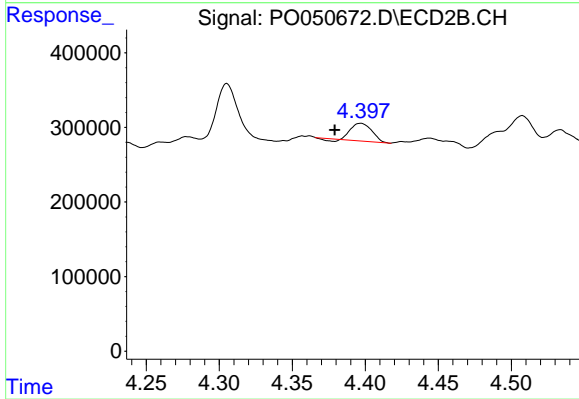
#15 AR-1232-5

R.T.: 4.794 min
 Delta R.T.: -0.008 min
 Response: 1673062
 Conc: 759.70 ng/ml



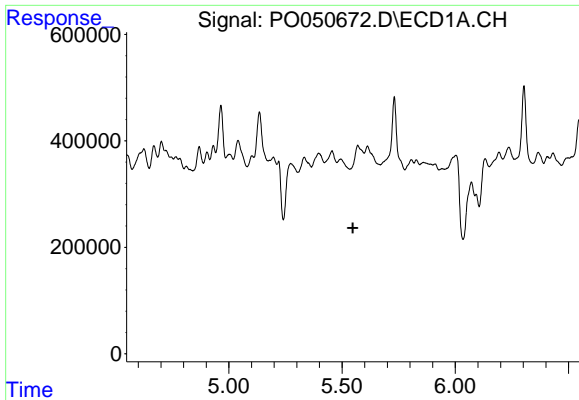
#16 AR-1242-1

R.T.: 0.000 min
 Exp R.T.: 5.525 min
 Response: 0
 Conc: N.D.



#16 AR-1242-1

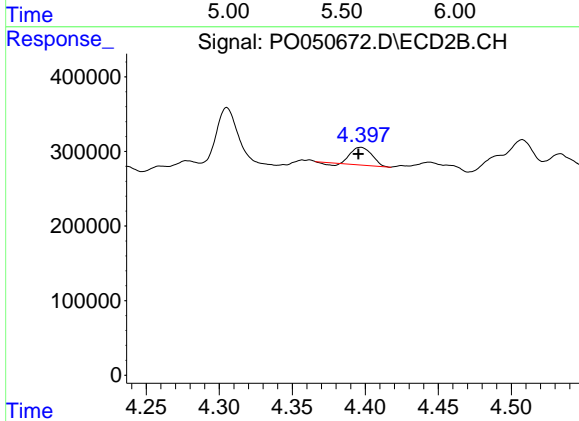
R.T.: 4.397 min
 Delta R.T.: 0.018 min
 Response: 229938
 Conc: 47.07 ng/ml



#17 AR-1242-2

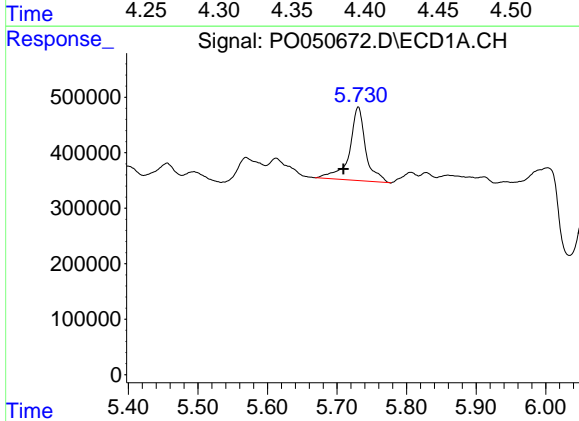
R.T.: 0.000 min
 Exp R.T.: 5.548 min
 Response: 0
 Conc: N.D.

Instrument :
 ECD_O
 ClientSampled :



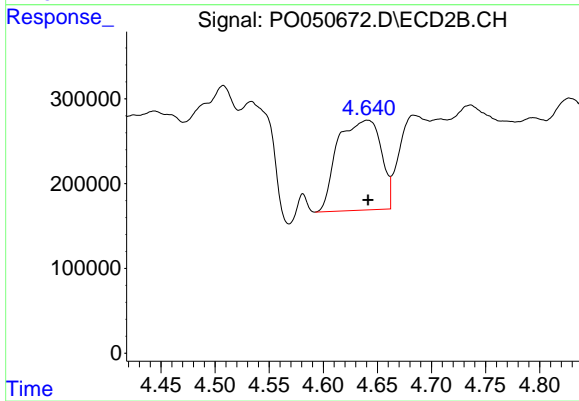
#17 AR-1242-2

R.T.: 4.397 min
 Delta R.T.: 0.002 min
 Response: 229938
 Conc: 26.35 ng/ml



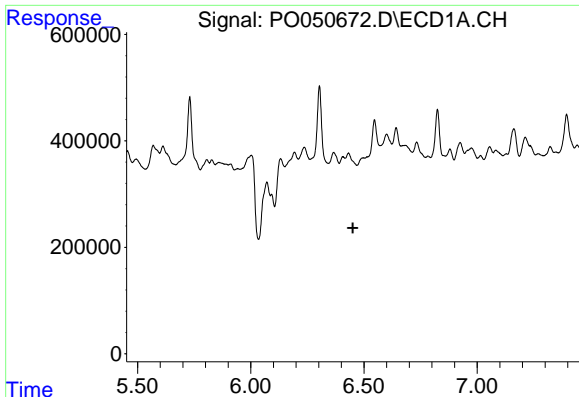
#19 AR-1242-4

R.T.: 5.730 min
 Delta R.T.: 0.021 min
 Response: 2142600
 Conc: 390.67 ng/ml



#19 AR-1242-4

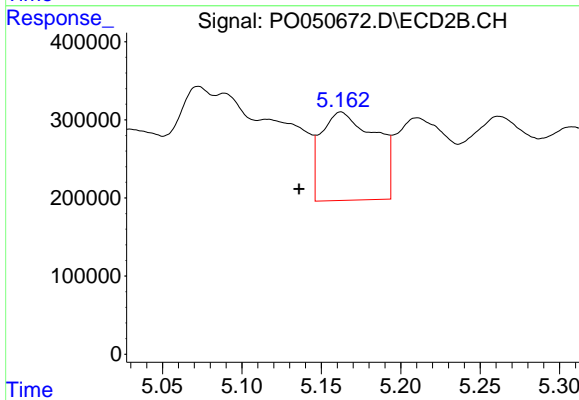
R.T.: 4.641 min
 Delta R.T.: 0.000 min
 Response: 2954976
 Conc: 676.38 ng/ml



#20 AR-1242-5

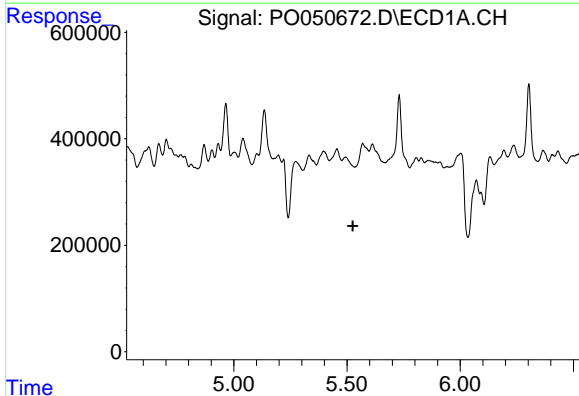
R.T.: 0.000 min
 Exp R.T. : 6.451 min
 Response: 0
 Conc: N.D.

Instrument :
 ECD_O
 ClientSampled :



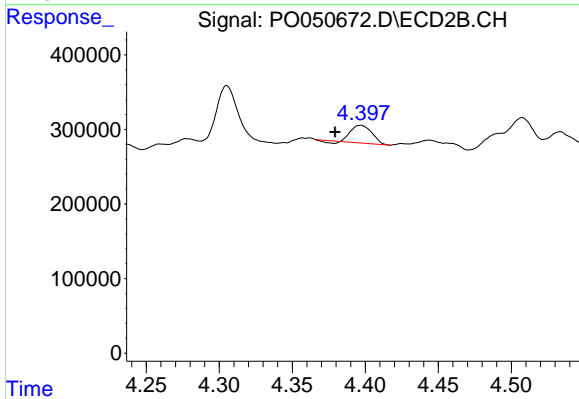
#20 AR-1242-5

R.T.: 5.162 min
 Delta R.T.: 0.026 min
 Response: 2696065
 Conc: 483.26 ng/ml



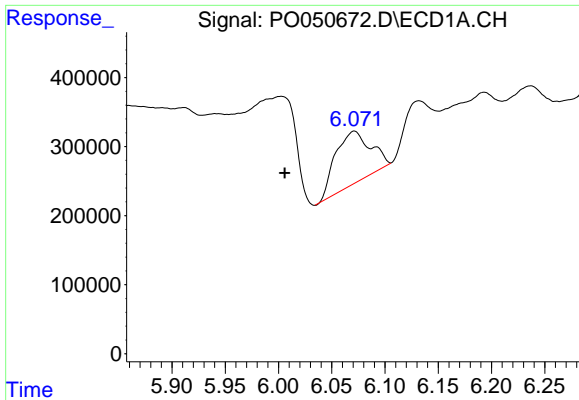
#21 AR-1248-1

R.T.: 0.000 min
 Exp R.T. : 5.526 min
 Response: 0
 Conc: N.D.



#21 AR-1248-1

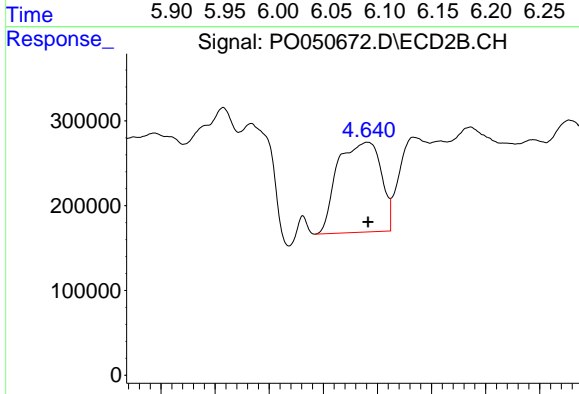
R.T.: 4.397 min
 Delta R.T.: 0.017 min
 Response: 229938
 Conc: 52.94 ng/ml



#23 AR-1248-3

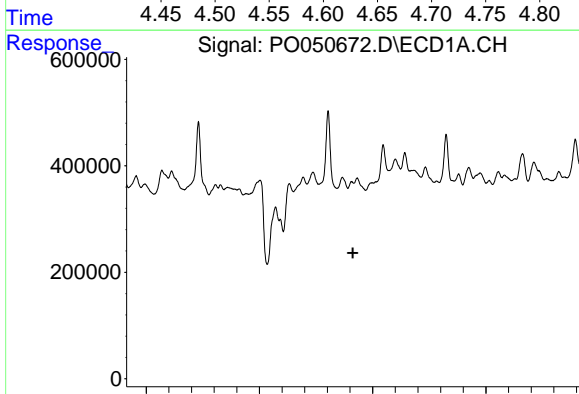
R.T.: 6.071 min
 Delta R.T.: 0.065 min
 Response: 1738355
 Conc: 168.41 ng/ml

Instrument :
 ECD_O
 ClientSampleId :



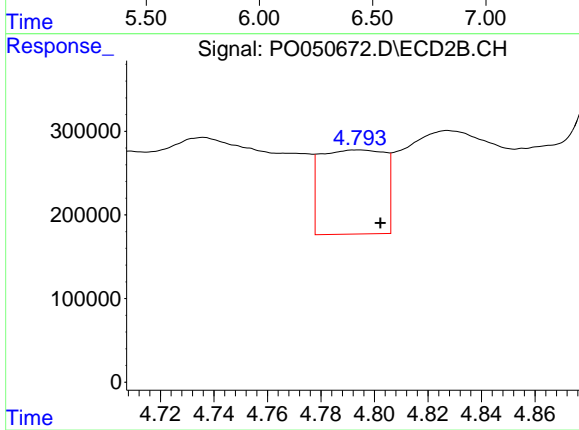
#23 AR-1248-3

R.T.: 4.641 min
 Delta R.T.: 0.000 min
 Response: 2954976
 Conc: 444.63 ng/ml



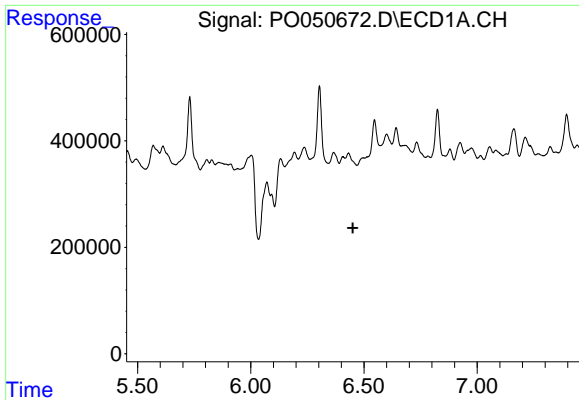
#24 AR-1248-4

R.T.: 0.000 min
 Exp R.T. : 6.413 min
 Response: 0
 Conc: N.D.



#24 AR-1248-4

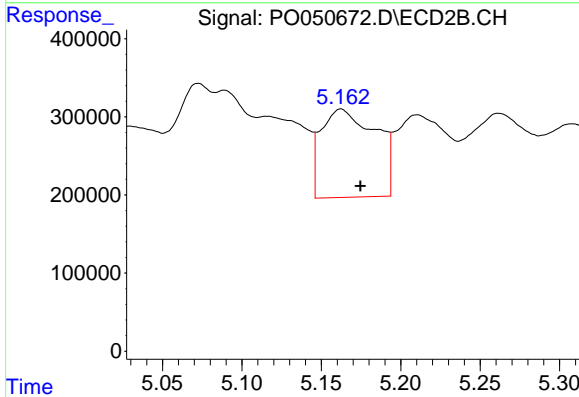
R.T.: 4.794 min
 Delta R.T.: -0.008 min
 Response: 1673062
 Conc: 204.89 ng/ml



#25 AR-1248-5

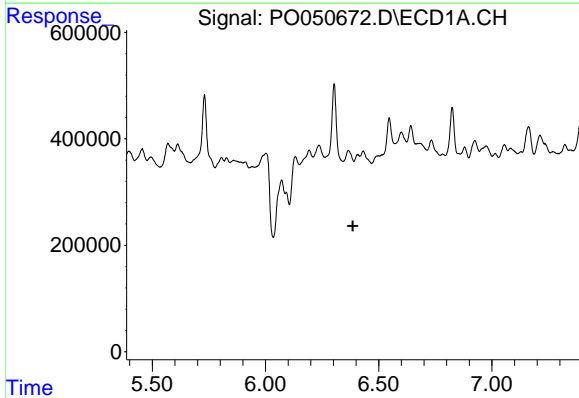
R.T.: 0.000 min
 Exp R.T. : 6.451 min
 Response: 0
 Conc: N.D.

Instrument :
 ECD_O
 ClientSampled :



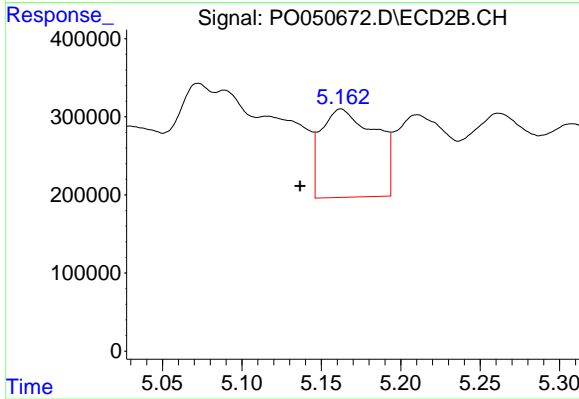
#25 AR-1248-5

R.T.: 5.162 min
 Delta R.T.: -0.012 min
 Response: 2696065
 Conc: 340.95 ng/ml



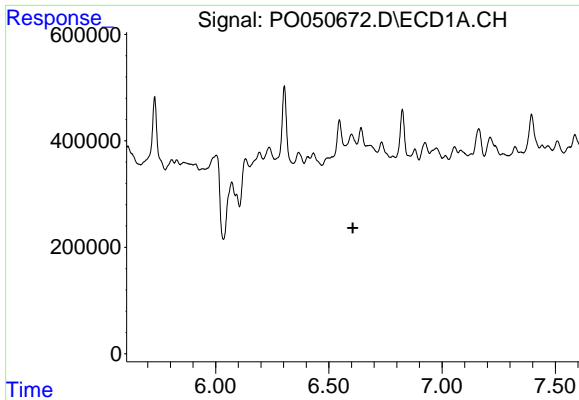
#26 AR-1254-1

R.T.: 0.000 min
 Exp R.T. : 6.386 min
 Response: 0
 Conc: N.D.



#26 AR-1254-1

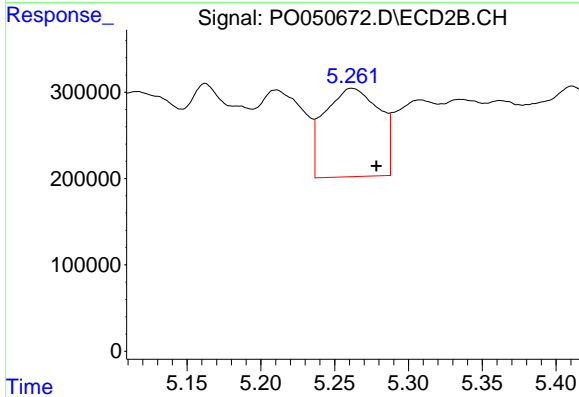
R.T.: 5.162 min
 Delta R.T.: 0.026 min
 Response: 2696065
 Conc: 185.97 ng/ml



#27 AR-1254-2

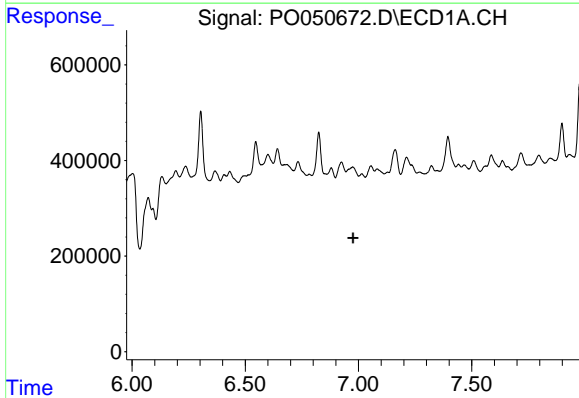
R.T.: 0.000 min
 Exp R.T.: 6.606 min
 Response: 0
 Conc: N.D.

Instrument :
 ECD_O
 ClientSampled :



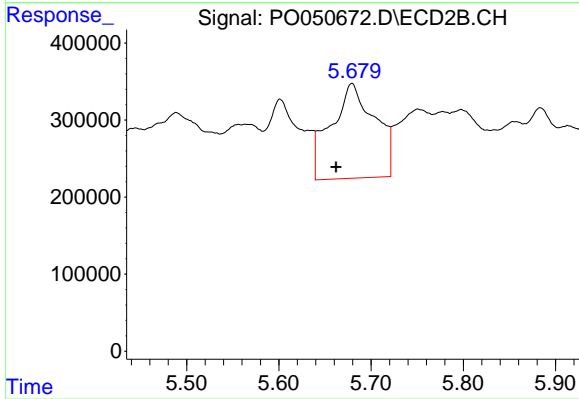
#27 AR-1254-2

R.T.: 5.262 min
 Delta R.T.: -0.016 min
 Response: 2641514
 Conc: 207.90 ng/ml



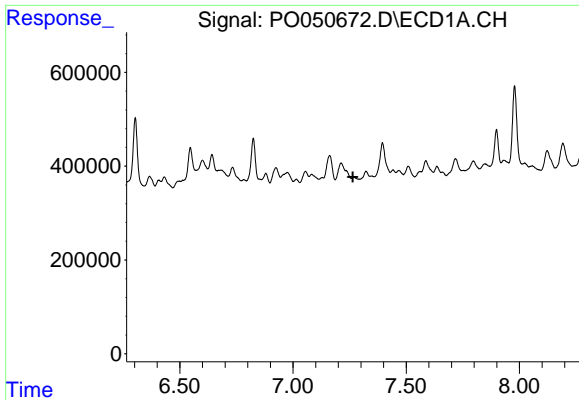
#28 AR-1254-3

R.T.: 0.000 min
 Exp R.T.: 6.976 min
 Response: 0
 Conc: N.D.



#28 AR-1254-3

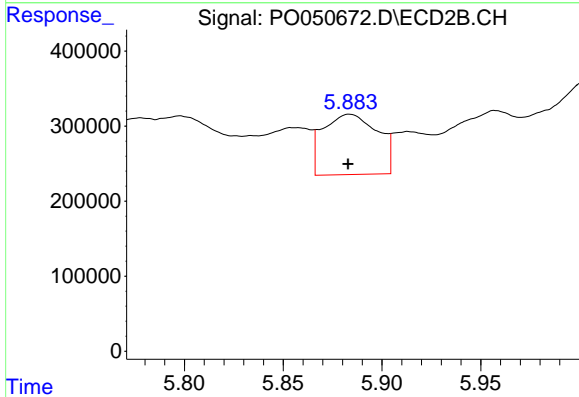
R.T.: 5.679 min
 Delta R.T.: 0.017 min
 Response: 4062240
 Conc: 198.26 ng/ml



#29 AR-1254-4

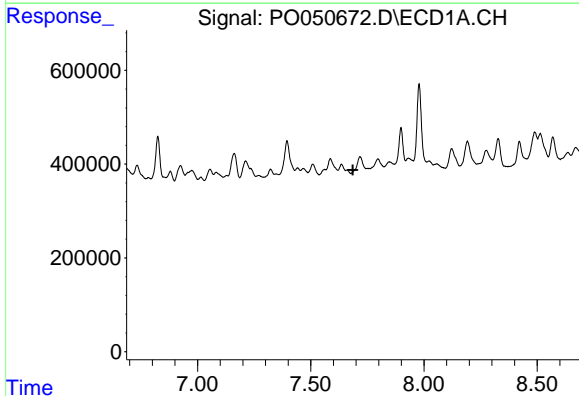
R.T.: 0.000 min
 Exp R.T. : 7.264 min
 Response: 0
 Conc: N.D.

Instrument :
 ECD_O
 ClientSampleId :



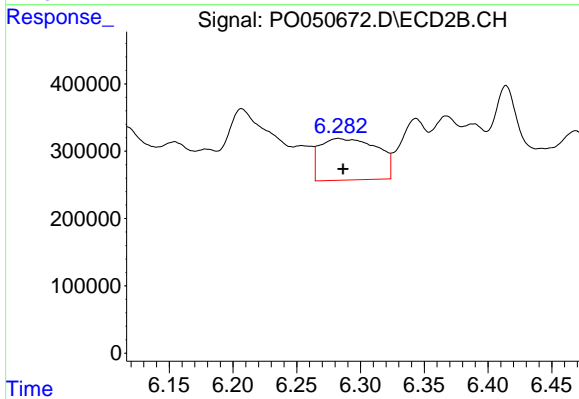
#29 AR-1254-4

R.T.: 5.884 min
 Delta R.T.: 0.000 min
 Response: 1547293
 Conc: 132.87 ng/ml



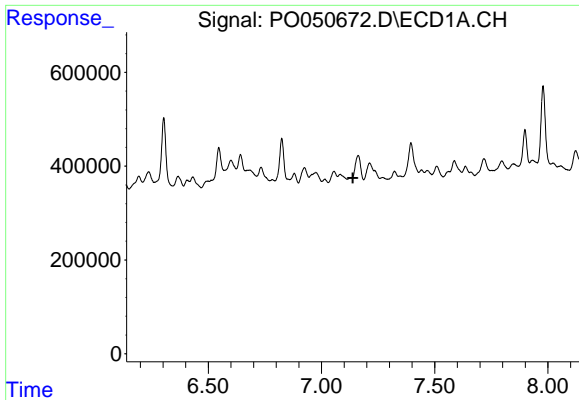
#30 AR-1254-5

R.T.: 0.000 min
 Exp R.T. : 7.686 min
 Response: 0
 Conc: N.D.



#30 AR-1254-5

R.T.: 6.283 min
 Delta R.T.: -0.004 min
 Response: 1925433
 Conc: 110.23 ng/ml

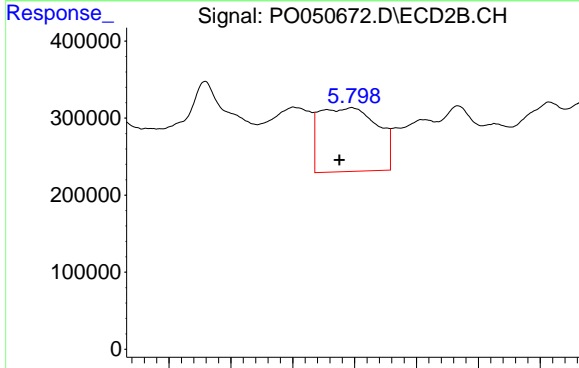


#31 AR-1260-1

R.T.: 0.000 min
 Exp R.T.: 7.139 min
 Response: 0
 Conc: N.D.

Instrument :
 ECD_O
 ClientSampled :

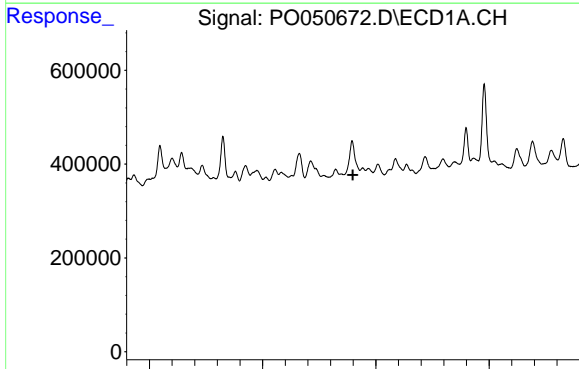
Time



#31 AR-1260-1

R.T.: 5.798 min
 Delta R.T.: 0.010 min
 Response: 2694841
 Conc: 177.88 ng/ml

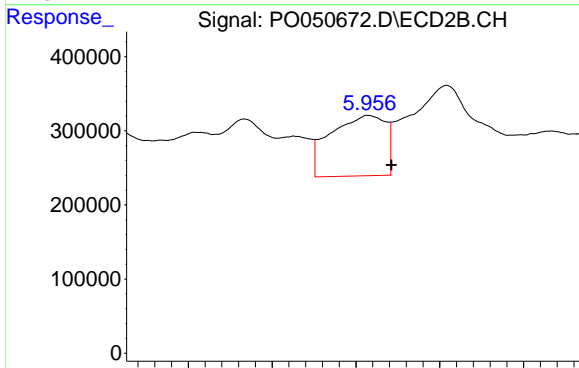
Time



#32 AR-1260-2

R.T.: 0.000 min
 Exp R.T.: 7.399 min
 Response: 0
 Conc: N.D.

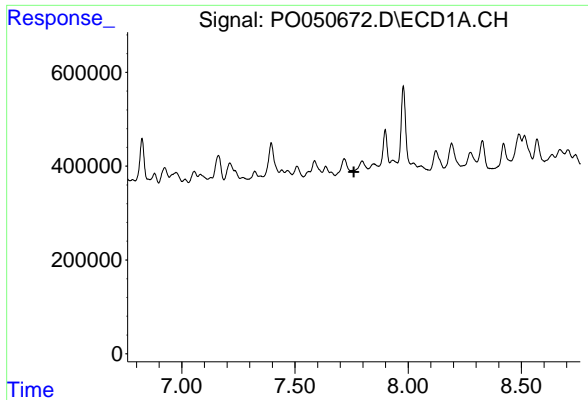
Time



#32 AR-1260-2

R.T.: 5.958 min
 Delta R.T.: -0.013 min
 Response: 1864745
 Conc: 100.80 ng/ml

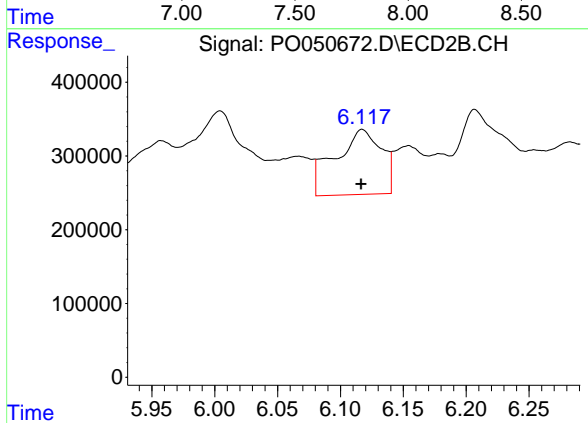
Time



#33 AR-1260-3

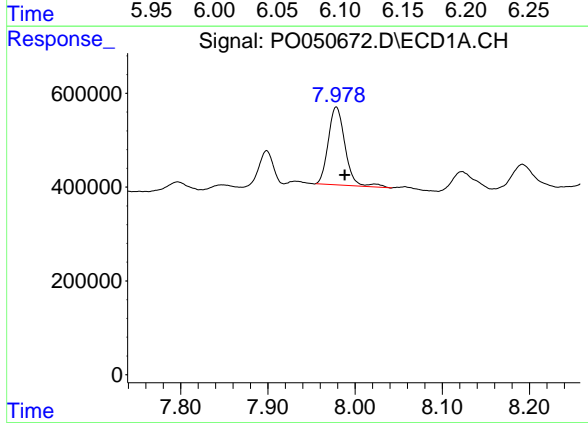
R.T.: 0.000 min
 Exp R.T.: 7.760 min
 Response: 0
 Conc: N.D.

Instrument :
 ECD_O
 ClientSampled :



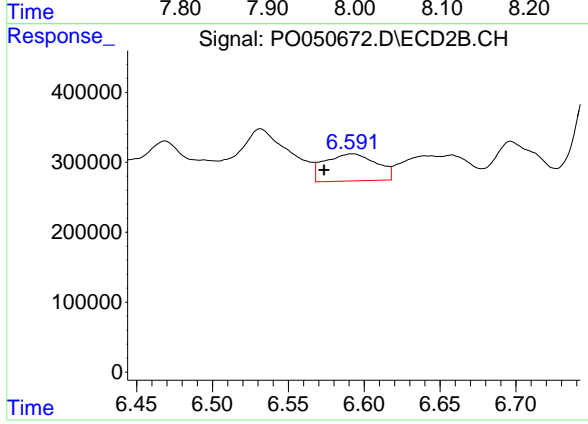
#33 AR-1260-3

R.T.: 6.117 min
 Delta R.T.: 0.001 min
 Response: 2264344
 Conc: 132.30 ng/ml



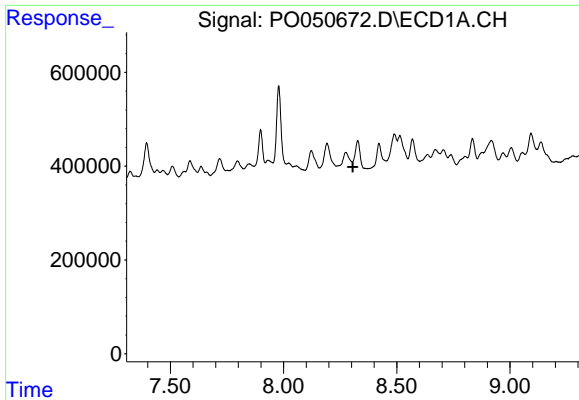
#34 AR-1260-4

R.T.: 7.979 min
 Delta R.T.: -0.009 min
 Response: 2232509
 Conc: 137.88 ng/ml



#34 AR-1260-4

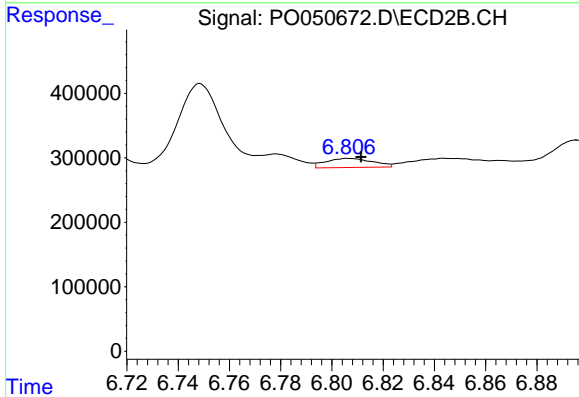
R.T.: 6.592 min
 Delta R.T.: 0.018 min
 Response: 914639
 Conc: 67.46 ng/ml



#35 AR-1260-5

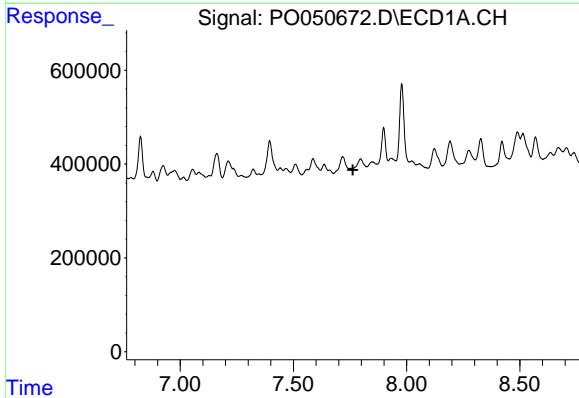
R.T.: 0.000 min
 Exp R.T. : 8.306 min
 Response: 0
 Conc: N.D.

Instrument :
 ECD_O
 ClientSampled :



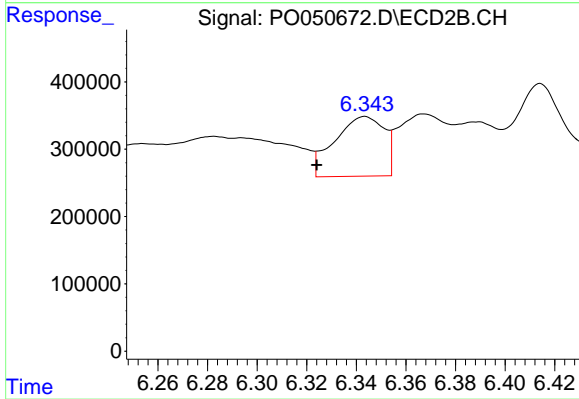
#35 AR-1260-5

R.T.: 6.807 min
 Delta R.T.: -0.005 min
 Response: 180289
 Conc: 5.90 ng/ml



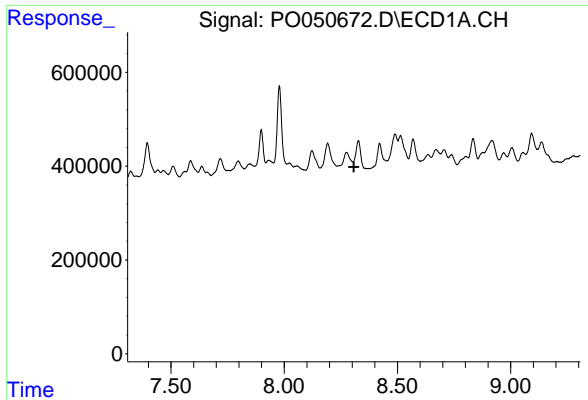
#36 AR-1262-1

R.T.: 0.000 min
 Exp R.T. : 7.762 min
 Response: 0
 Conc: N.D.



#36 AR-1262-1

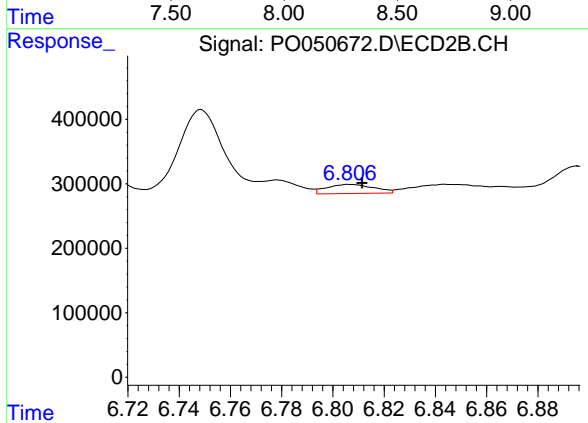
R.T.: 6.343 min
 Delta R.T.: 0.019 min
 Response: 1231790
 Conc: 77.96 ng/ml



#37 AR-1262-2

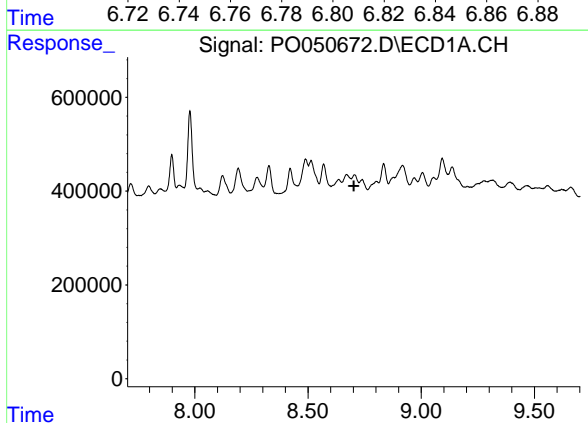
R.T.: 0.000 min
 Exp R.T. : 8.308 min
 Response: 0
 Conc: N.D.

Instrument :
 ECD_O
 ClientSampled :



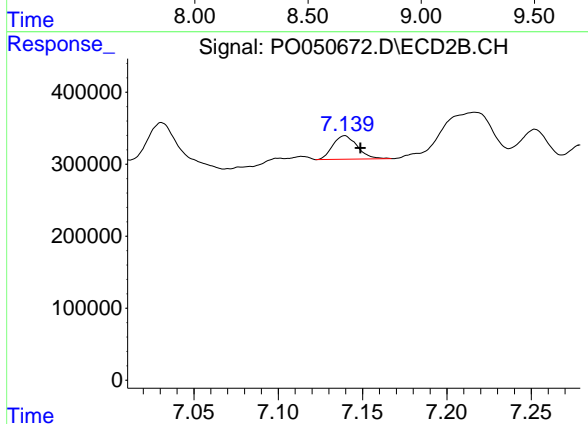
#37 AR-1262-2

R.T.: 6.807 min
 Delta R.T.: -0.005 min
 Response: 180289
 Conc: 7.04 ng/ml



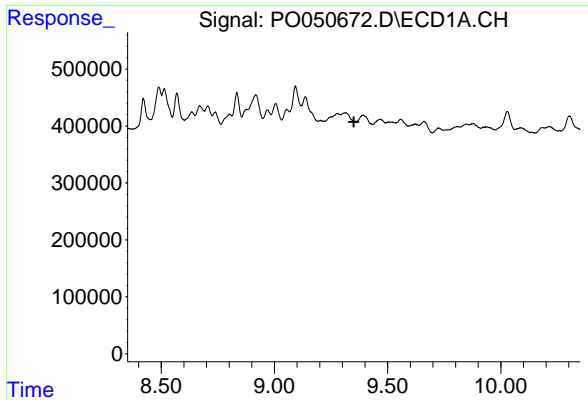
#39 AR-1262-4

R.T.: 0.000 min
 Exp R.T. : 8.702 min
 Response: 0
 Conc: N.D.



#39 AR-1262-4

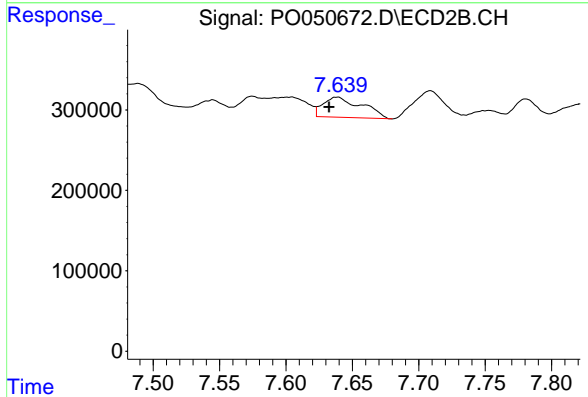
R.T.: 7.140 min
 Delta R.T.: -0.009 min
 Response: 331471
 Conc: 17.67 ng/ml



#40 AR-1262-5

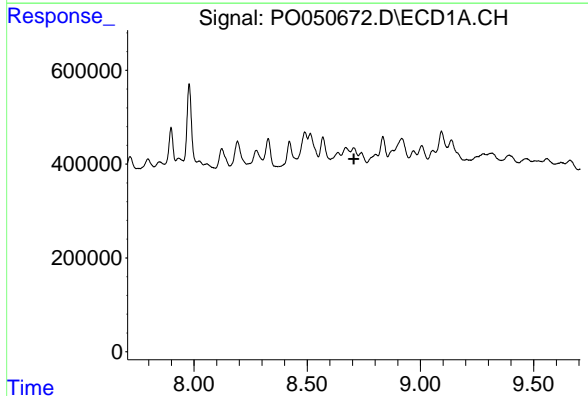
R.T.: 0.000 min
 Exp R.T. : 9.351 min
 Response: 0
 Conc: N.D.

Instrument :
 ECD_O
 ClientSampled :



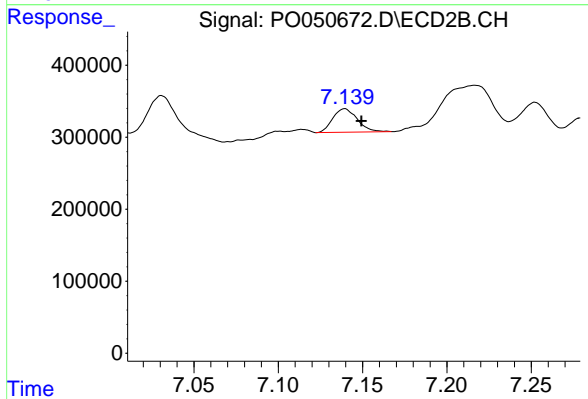
#40 AR-1262-5

R.T.: 7.638 min
 Delta R.T.: 0.006 min
 Response: 506739
 Conc: 64.52 ng/ml



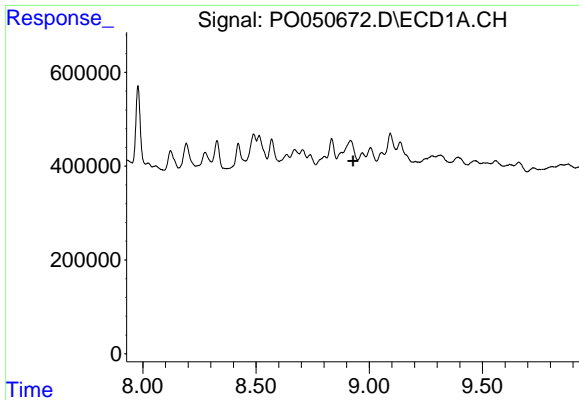
#42 AR-1268-2

R.T.: 0.000 min
 Exp R.T. : 8.706 min
 Response: 0
 Conc: N.D.



#42 AR-1268-2

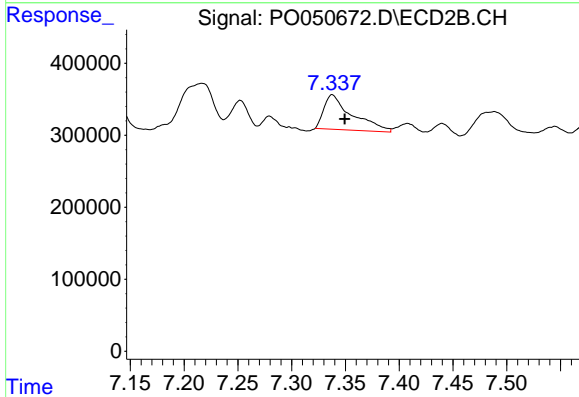
R.T.: 7.140 min
 Delta R.T.: -0.010 min
 Response: 331471
 Conc: 10.58 ng/ml



#43 AR-1268-3

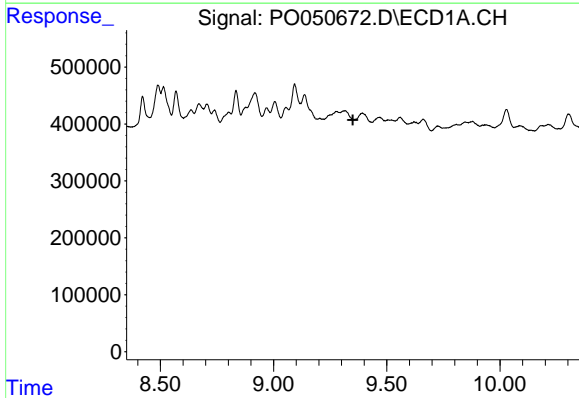
R.T.: 0.000 min
 Exp R.T. : 8.928 min
 Response: 0
 Conc: N.D.

Instrument :
 ECD_O
 ClientSampled :



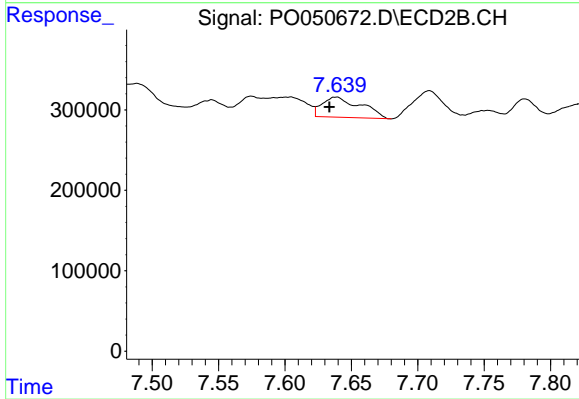
#43 AR-1268-3

R.T.: 7.338 min
 Delta R.T.: -0.011 min
 Response: 868656
 Conc: 32.14 ng/ml



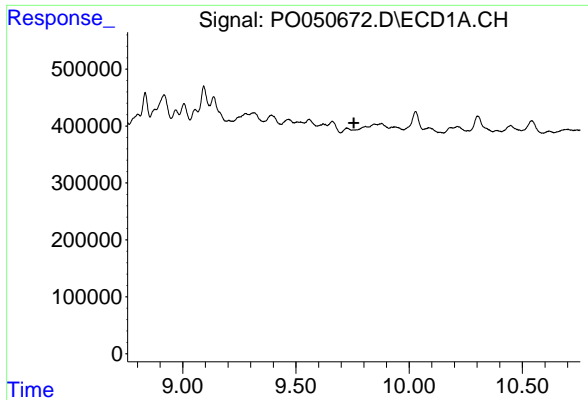
#44 AR-1268-4

R.T.: 0.000 min
 Exp R.T. : 9.351 min
 Response: 0
 Conc: N.D.



#44 AR-1268-4

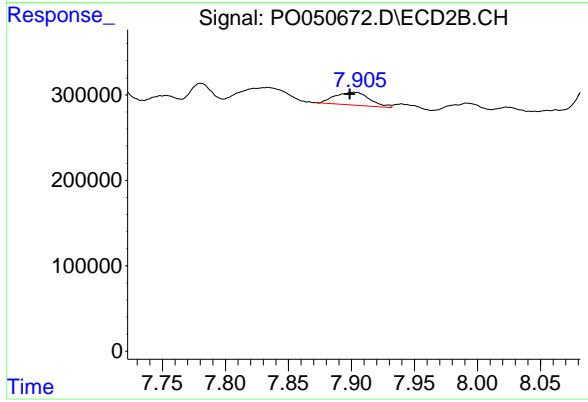
R.T.: 7.638 min
 Delta R.T.: 0.005 min
 Response: 506739
 Conc: 51.95 ng/ml



#45 AR-1268-5

R.T.: 0.000 min
Exp R.T. : 9.756 min
Response: 0
Conc: N.D.

Instrument :
ECD_O
ClientSampleId :



#45 AR-1268-5

R.T.: 7.902 min
Delta R.T.: 0.003 min
Response: 287058
Conc: 3.79 ng/ml