

Data Path : Z:\pestpcbsrv\HPCHEM1\ECD_0\Data\PO102821\
 Data File : PO082301.D
 Signal(s) : Signal #1: ECD1A.CH Signal #2: ECD2B.CH
 Acq On : 28 Oct 2021 15:55
 Operator : AJ\MA
 Sample : M4346-21 20X
 Misc :
 ALS Vial : 19 Sample Multiplier: 1

Instrument :
 ECD_0
 ClientSampleId :
 SEC-2021-8A

Integration File signal 1: autoint1.e
 Integration File signal 2: autoint2.e
 Quant Time: Oct 29 04:41:33 2021
 Quant Method : Z:\pestpcbsrv\HPCHEM1\ECD_0\methods\PO101821.M
 Quant Title : GC EXTRACTABLES
 QLast Update : Tue Oct 19 04:37:47 2021
 Response via : Initial Calibration
 Integrator: ChemStation 6890 Scale Mode: Small noise peaks clipped

Volume Inj. : 2 µl
 Signal #1 Phase : ZB-MR1 Signal #2 Phase: ZB-MR2
 Signal #1 Info : 30Mx0.32mmx 0.50µ Signal #2 Info : 30M x 0.32mm x 0.25µm

Compound	RT#1	RT#2	Resp#1	Resp#2	ng/ml	ng/ml

System Monitoring Compounds						
1) SA Tetrachlo...	4.976	3.972	81729	29282	1.011	0.992m
2) SA Decachlor...	11.088	9.290	48745	22443	0.877	0.881m
Target Compounds						
26) L6 AR-1254-1	7.228	6.106	44185	18478	18.450	11.095 #
27) L6 AR-1254-2	7.459	6.267	45746	21804	12.541	14.605
28) L6 AR-1254-3	7.845	6.687	54938	46562	15.181m	20.793 #
29) L6 AR-1254-4	8.143	6.929	52497	17171	19.481	11.691 #
30) L6 AR-1254-5	8.572	7.360	29418	36402	10.101m	17.677 #

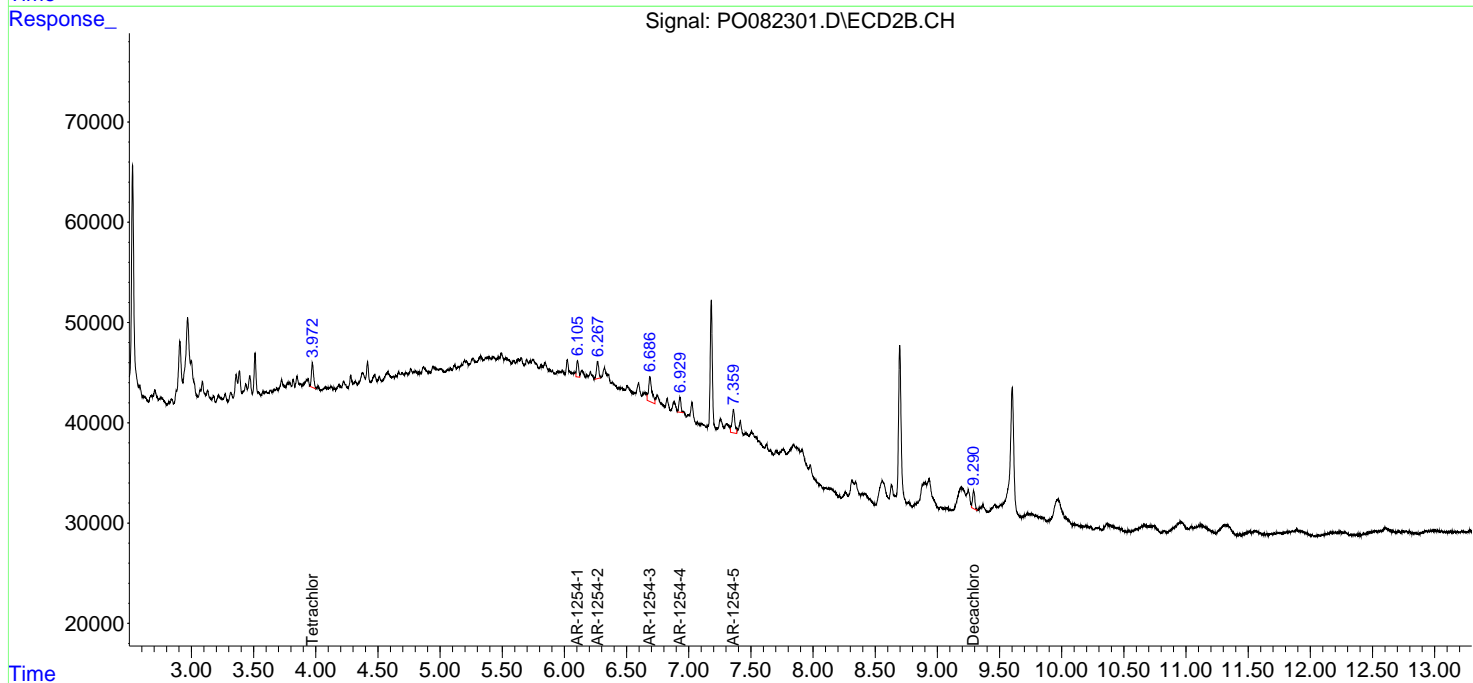
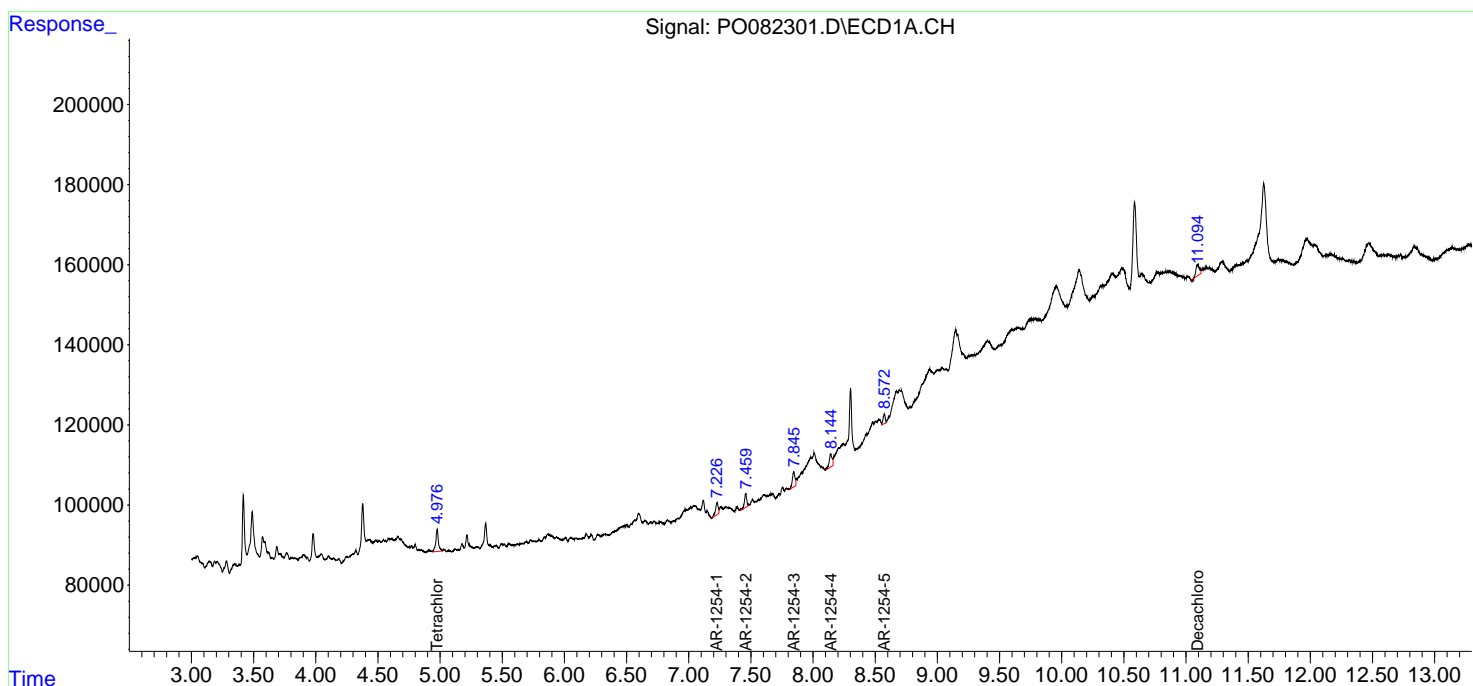
(f)=RT Delta > 1/2 Window (#)=Amounts differ by > 25% (m)=manual int.

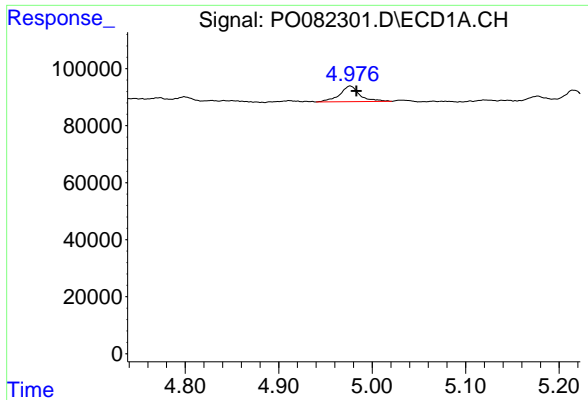
Data Path : Z:\pestpcbsrv\HPCHEM1\ECD_O\Data\PO102821\
 Data File : PO082301.D
 Signal(s) : Signal #1: ECD1A.CH Signal #2: ECD2B.CH
 Acq On : 28 Oct 2021 15:55
 Operator : AJ\MA
 Sample : M4346-21 20X
 Misc :
 ALS Vial : 19 Sample Multiplier: 1

Instrument :
 ECD_O
 ClientSampled :
 SEC-2021-8A

Integration File signal 1: autoint1.e
 Integration File signal 2: autoint2.e
 Quant Time: Oct 29 04:41:33 2021
 Quant Method : Z:\pestpcbsrv\HPCHEM1\ECD_O\methods\PO101821.M
 Quant Title : GC EXTRACTABLES
 QLast Update : Tue Oct 19 04:37:47 2021
 Response via : Initial Calibration
 Integrator: ChemStation 6890 Scale Mode: Small noise peaks clipped

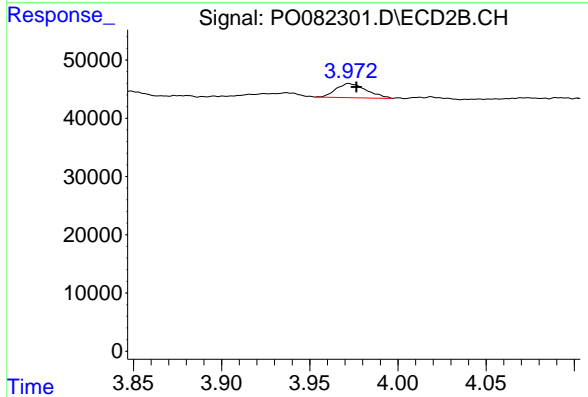
Volume Inj. : 2 µl
 Signal #1 Phase : ZB-MR1 Signal #2 Phase: ZB-MR2
 Signal #1 Info : 30Mx0.32mmx 0.50µ Signal #2 Info : 30M x 0.32mm x 0.25µm



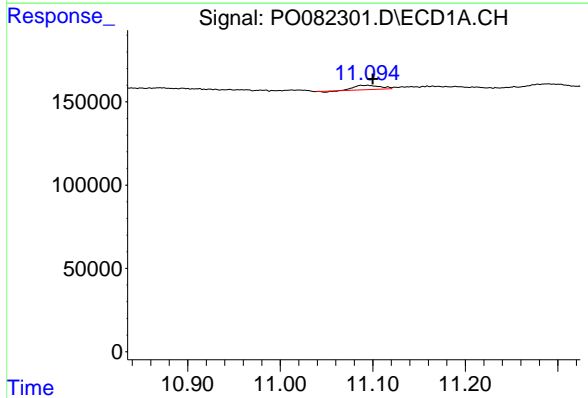


#1 Tetrachloro-m-xylene
 R.T.: 4.976 min
 Delta R.T.: -0.007 min
 Response: 81729
 Conc: 1.01 ng/ml

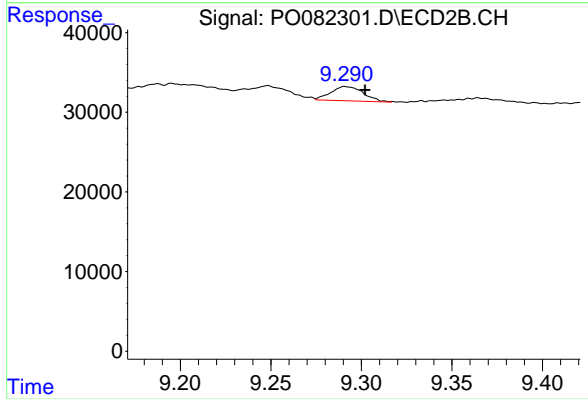
Instrument :
 ECD_O
 ClientSampleId :
 SEC-2021-8A



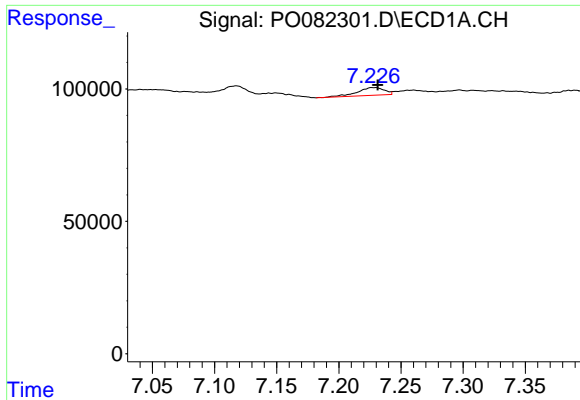
#1 Tetrachloro-m-xylene
 R.T.: 3.972 min
 Delta R.T.: -0.005 min
 Response: 29282
 Conc: 0.99 ng/ml m



#2 Decachlorobiphenyl
 R.T.: 11.088 min
 Delta R.T.: -0.012 min
 Response: 48745
 Conc: 0.88 ng/ml



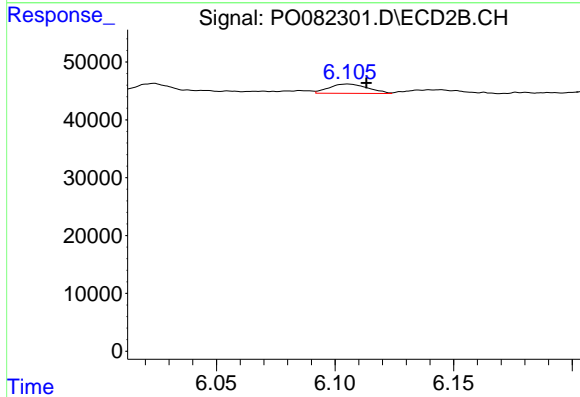
#2 Decachlorobiphenyl
 R.T.: 9.290 min
 Delta R.T.: -0.012 min
 Response: 22443
 Conc: 0.88 ng/ml m



#26 AR-1254-1

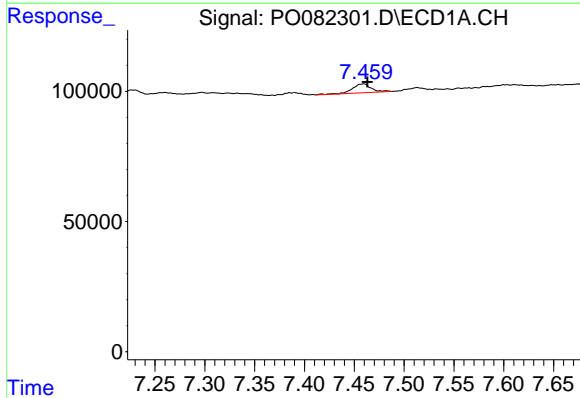
R.T.: 7.228 min
 Delta R.T.: -0.004 min
 Response: 44185
 Conc: 18.45 ng/ml

Instrument :
 ECD_O
 ClientSampleId :
 SEC-2021-8A



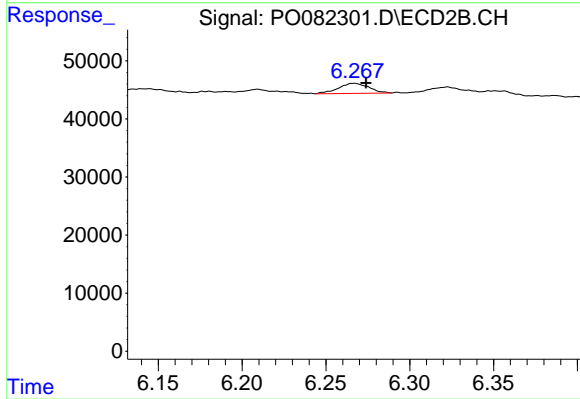
#26 AR-1254-1

R.T.: 6.106 min
 Delta R.T.: -0.008 min
 Response: 18478
 Conc: 11.10 ng/ml



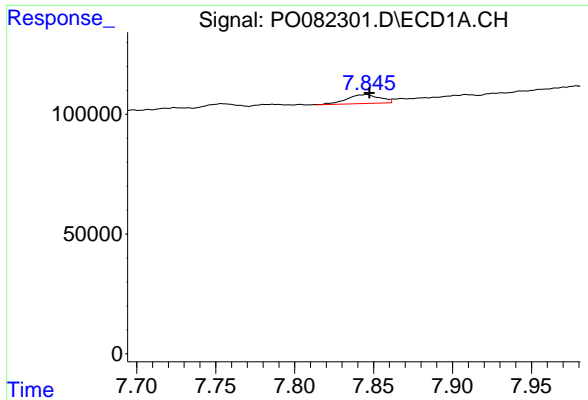
#27 AR-1254-2

R.T.: 7.459 min
 Delta R.T.: -0.004 min
 Response: 45746
 Conc: 12.54 ng/ml



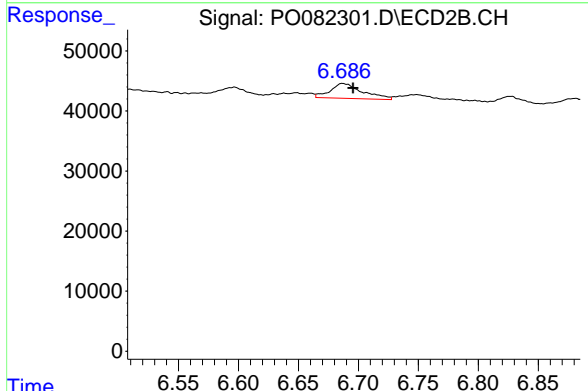
#27 AR-1254-2

R.T.: 6.267 min
 Delta R.T.: -0.007 min
 Response: 21804
 Conc: 14.60 ng/ml

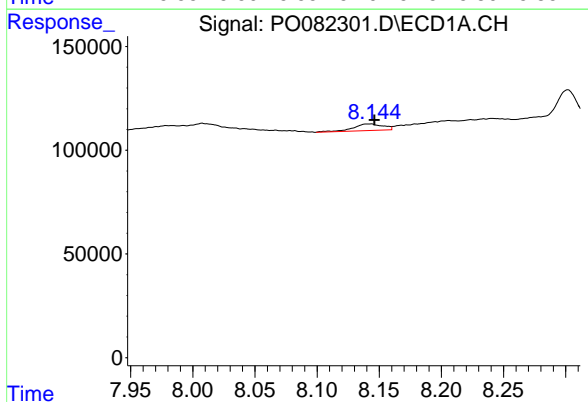


#28 AR-1254-3
 R.T.: 7.845 min
 Delta R.T.: -0.002 min
 Response: 54938
 Conc: 15.18 ng/ml m

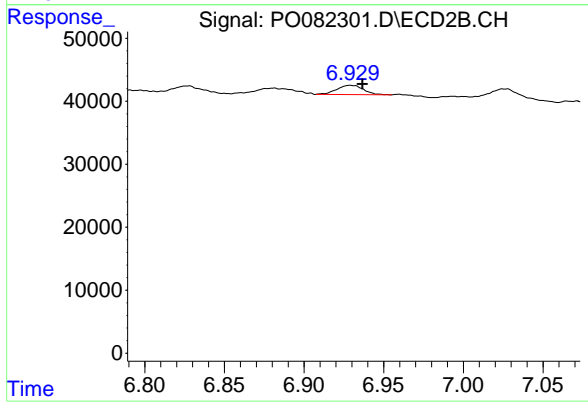
Instrument :
 ECD_O
ClientSampleId :
 SEC-2021-8A



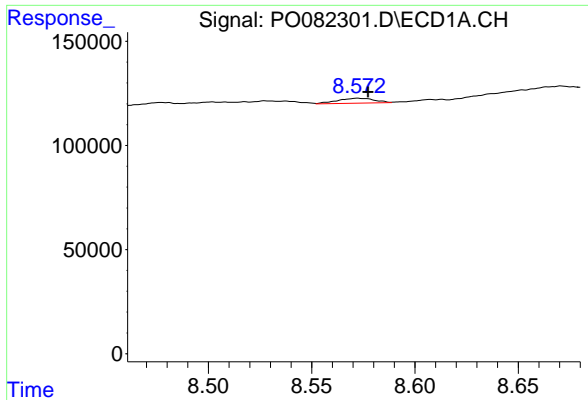
#28 AR-1254-3
 R.T.: 6.687 min
 Delta R.T.: -0.009 min
 Response: 46562
 Conc: 20.79 ng/ml



#29 AR-1254-4
 R.T.: 8.143 min
 Delta R.T.: -0.003 min
 Response: 52497
 Conc: 19.48 ng/ml



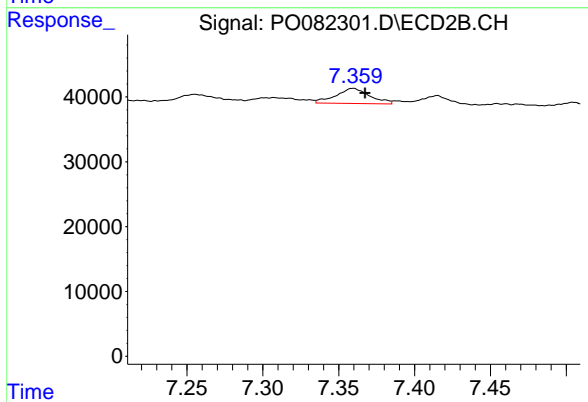
#29 AR-1254-4
 R.T.: 6.929 min
 Delta R.T.: -0.008 min
 Response: 17171
 Conc: 11.69 ng/ml



#30 AR-1254-5

R.T.: 8.572 min
Delta R.T.: -0.006 min
Response: 29418
Conc: 10.10 ng/ml m

Instrument :
ECD_O
ClientSampleId :
SEC-2021-8A



#30 AR-1254-5

R.T.: 7.360 min
Delta R.T.: -0.008 min
Response: 36402
Conc: 17.68 ng/ml