

Data Path : Z:\pestpcbsrv\HPCHEM1\ECD_0\Data\PO102821\
 Data File : PO082304.D
 Signal(s) : Signal #1: ECD1A.CH Signal #2: ECD2B.CH
 Acq On : 28 Oct 2021 16:47
 Operator : AJ\MA
 Sample : M4346-24 20X
 Misc :
 ALS Vial : 22 Sample Multiplier: 1

Instrument :
 ECD_0
 ClientSampleId :
 SEC-2021-9B

Integration File signal 1: autoint1.e
 Integration File signal 2: autoint2.e
 Quant Time: Oct 29 04:38:38 2021
 Quant Method : Z:\pestpcbsrv\HPCHEM1\ECD_0\methods\PO101821.M
 Quant Title : GC EXTRACTABLES
 QLast Update : Tue Oct 19 04:37:47 2021
 Response via : Initial Calibration
 Integrator: ChemStation 6890 Scale Mode: Small noise peaks clipped

Volume Inj. : 2 µl
 Signal #1 Phase : ZB-MR1 Signal #2 Phase: ZB-MR2
 Signal #1 Info : 30Mx0.32mmx 0.50µ Signal #2 Info : 30M x 0.32mm x 0.25µm

Compound	RT#1	RT#2	Resp#1	Resp#2	ng/ml	ng/ml

System Monitoring Compounds						
1) SA Tetrachlo...	4.978	3.971	59664	18448	0.738	0.625
2) SA Decachlor...	11.101	9.289	43564	29115	0.784	1.143m#

Target Compounds

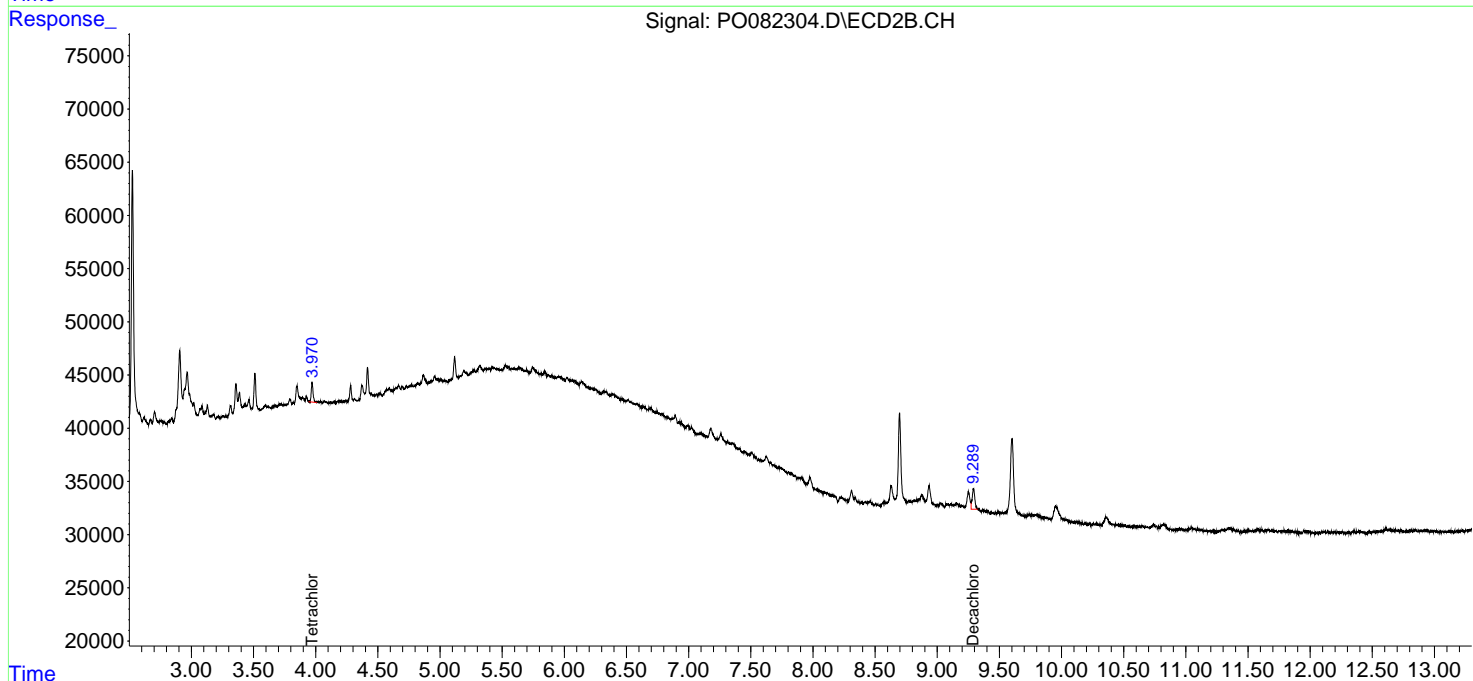
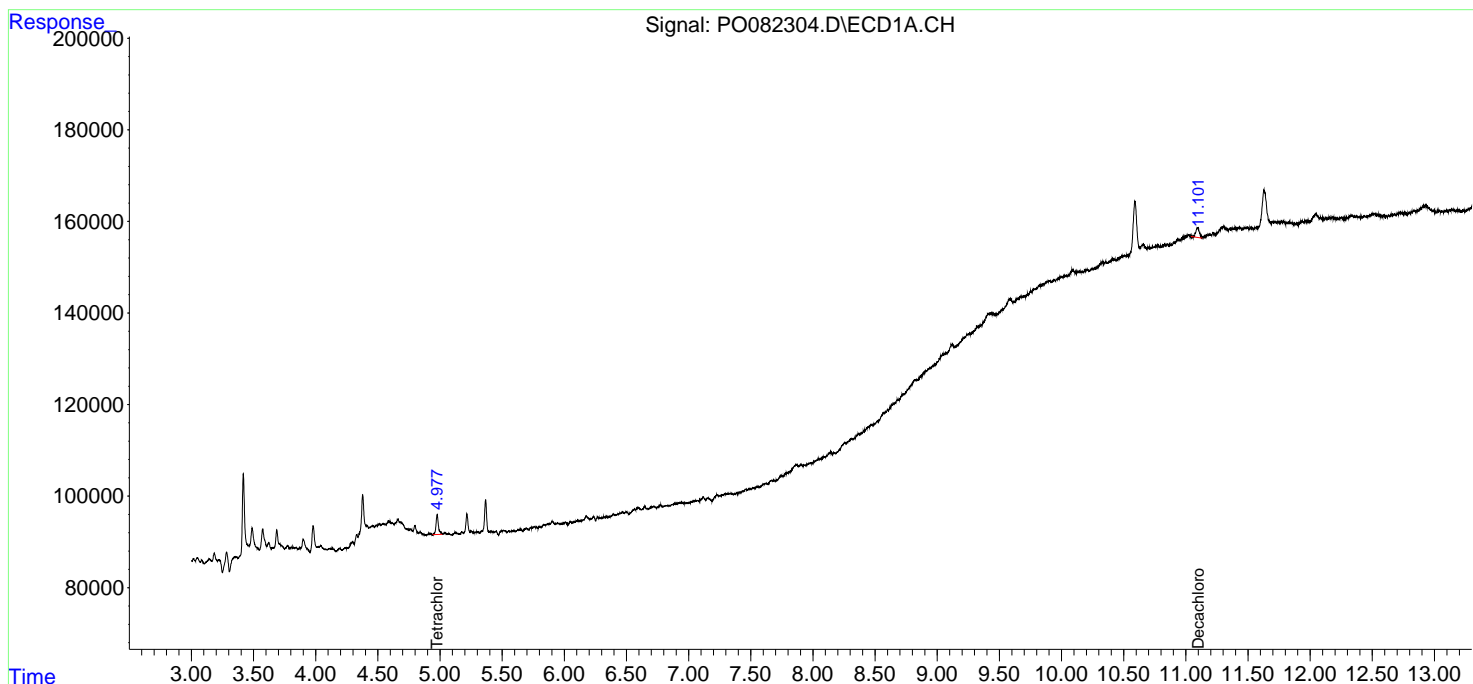
(f)=RT Delta > 1/2 Window (#)=Amounts differ by > 25% (m)=manual int.

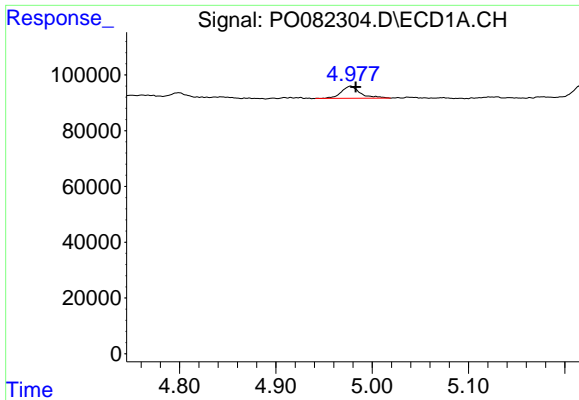
Data Path : Z:\pestpcbsrv\HPCHEM1\ECD_0\Data\PO102821\
 Data File : PO082304.D
 Signal(s) : Signal #1: ECD1A.CH Signal #2: ECD2B.CH
 Acq On : 28 Oct 2021 16:47
 Operator : AJ\MA
 Sample : M4346-24 20X
 Misc :
 ALS Vial : 22 Sample Multiplier: 1

Instrument :
 ECD_O
 ClientSampleId :
 SEC-2021-9B

Integration File signal 1: autoint1.e
 Integration File signal 2: autoint2.e
 Quant Time: Oct 29 04:38:38 2021
 Quant Method : Z:\pestpcbsrv\HPCHEM1\ECD_0\methods\PO101821.M
 Quant Title : GC EXTRACTABLES
 QLast Update : Tue Oct 19 04:37:47 2021
 Response via : Initial Calibration
 Integrator: ChemStation 6890 Scale Mode: Small noise peaks clipped

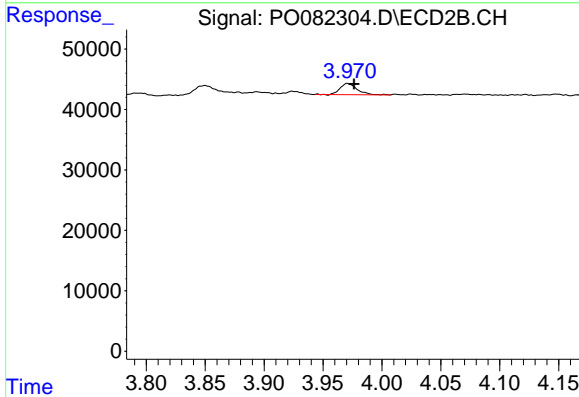
Volume Inj. : 2 µl
 Signal #1 Phase : ZB-MR1 Signal #2 Phase: ZB-MR2
 Signal #1 Info : 30Mx0.32mmx 0.50µ Signal #2 Info : 30M x 0.32mm x 0.25µm



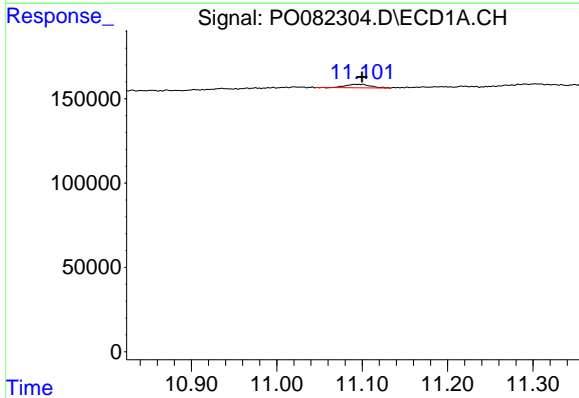


#1 Tetrachloro-m-xylene
 R.T.: 4.978 min
 Delta R.T.: -0.005 min
 Response: 59664
 Conc: 0.74 ng/ml

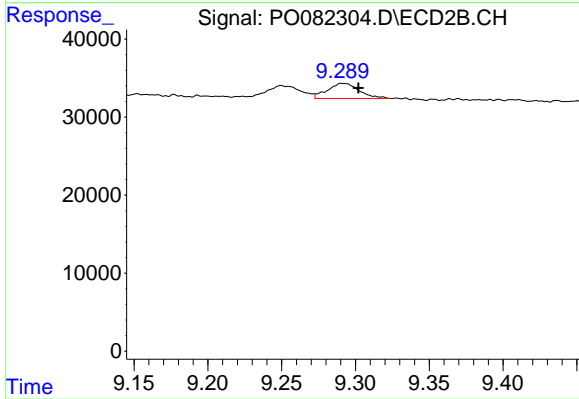
Instrument :
 ECD_O
 ClientSampleId :
 SEC-2021-9B



#1 Tetrachloro-m-xylene
 R.T.: 3.971 min
 Delta R.T.: -0.006 min
 Response: 18448
 Conc: 0.63 ng/ml



#2 Decachlorobiphenyl
 R.T.: 11.101 min
 Delta R.T.: 0.000 min
 Response: 43564
 Conc: 0.78 ng/ml



#2 Decachlorobiphenyl
 R.T.: 9.289 min
 Delta R.T.: -0.013 min
 Response: 29115
 Conc: 1.14 ng/ml m