

Data Path : Z:\pestpcbsrv\HPCHEM1\ECD_0\Data\PO102921\
 Data File : PO082335.D
 Signal(s) : Signal #1: ECD1A.CH Signal #2: ECD2B.CH
 Acq On : 29 Oct 2021 12:13
 Operator : AJ\MA
 Sample : M4389-05
 Misc :
 ALS Vial : 8 Sample Multiplier: 1

Instrument :
 ECD_0
 ClientSampleId :
 IRV-2021-4A

Integration File signal 1: autoint1.e
 Integration File signal 2: autoint2.e
 Quant Time: Oct 29 15:24:05 2021
 Quant Method : Z:\pestpcbsrv\HPCHEM1\ECD_0\methods\PO101821.M
 Quant Title : GC EXTRACTABLES
 QLast Update : Fri Oct 29 11:08:21 2021
 Response via : Initial Calibration
 Integrator: ChemStation 6890 Scale Mode: Small noise peaks clipped

Volume Inj. : 2 µl
 Signal #1 Phase : ZB-MR1 Signal #2 Phase: ZB-MR2
 Signal #1 Info : 30Mx0.32mmx 0.50µ Signal #2 Info : 30M x 0.32mm x 0.25µm

Compound	RT#1	RT#2	Resp#1	Resp#2	ng/ml	ng/ml

System Monitoring Compounds						
1) SA Tetrachlo...	4.978	3.974	1164867	429559	14.416	14.559
2) SA Decachlor...	11.111	9.315	978352	382819	17.603	15.030m
Target Compounds						
26) L6 AR-1254-1	7.229	6.107	295028	187744	123.190	112.735
27) L6 AR-1254-2	7.460	6.268	491662	166670	134.788	111.635
28) L6 AR-1254-3	7.844	6.689	469360	220400	129.700	98.424
29) L6 AR-1254-4	8.142	6.931	344934	148970	128.001	101.429
30) L6 AR-1254-5	8.574	7.362	390096	191676	133.940	93.078 #

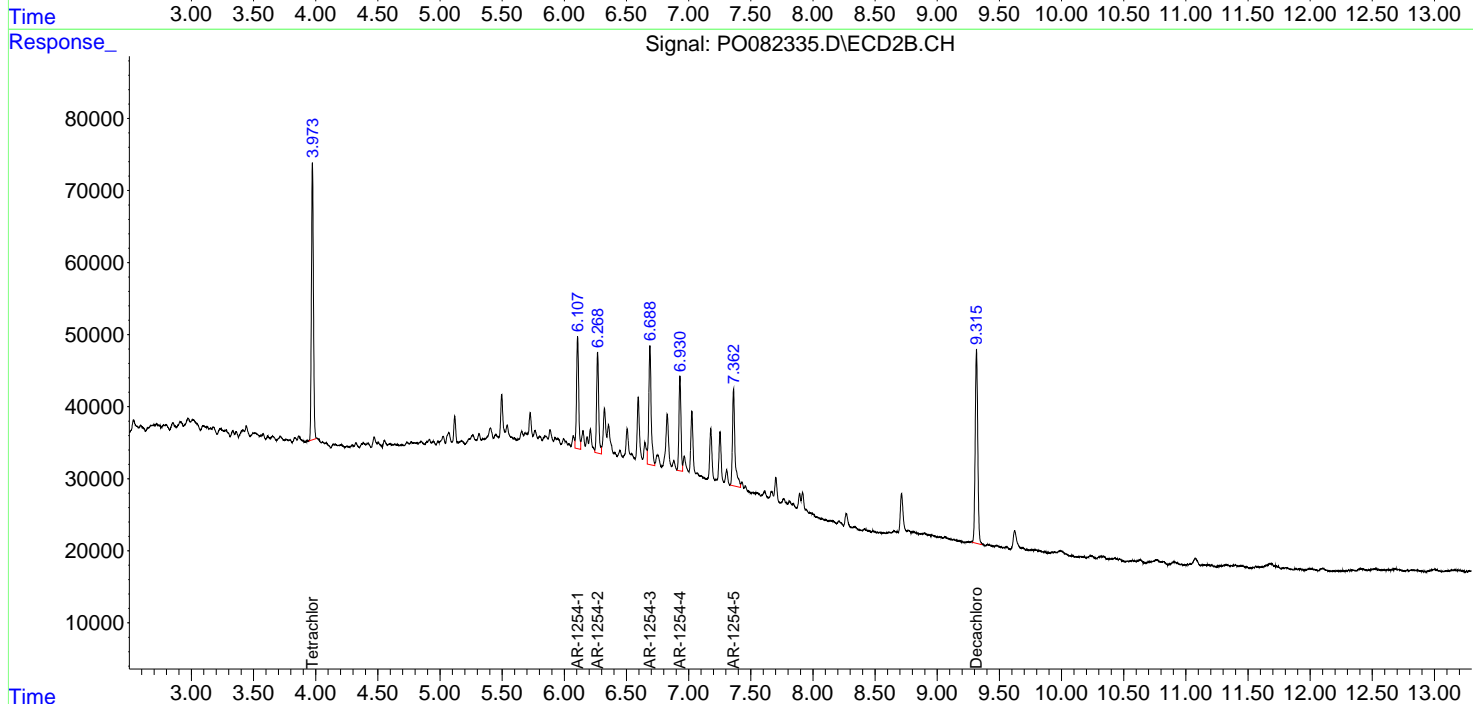
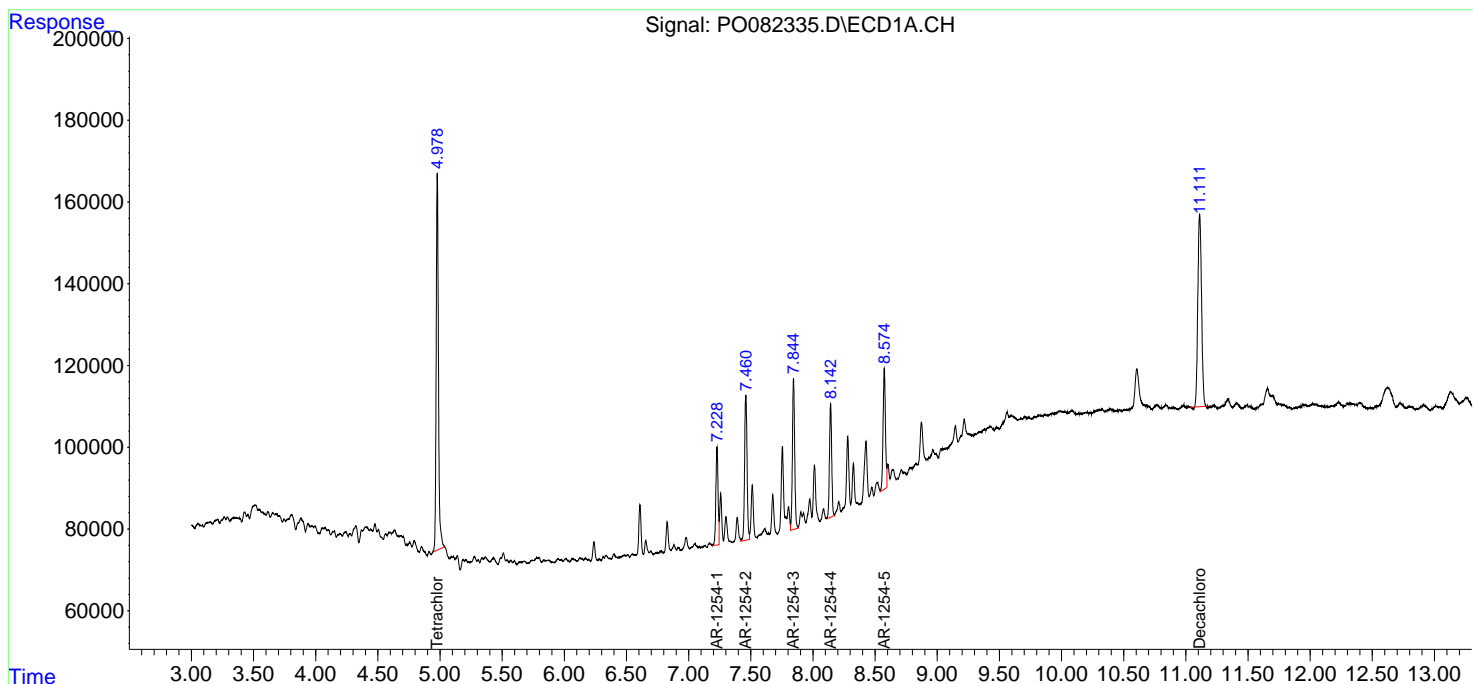
(f)=RT Delta > 1/2 Window (#)=Amounts differ by > 25% (m)=manual int.

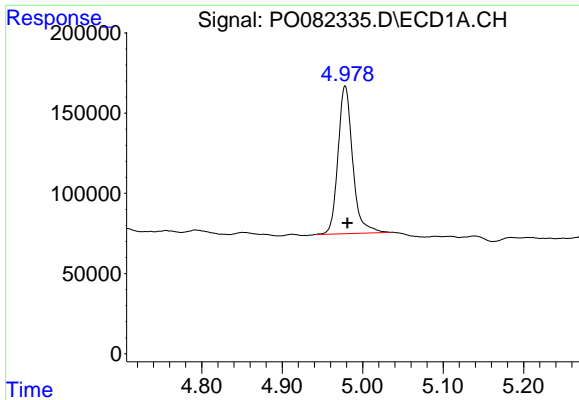
Data Path : Z:\pestpcbsrv\HPCHEM1\ECD_0\Data\PO102921\
 Data File : PO082335.D
 Signal(s) : Signal #1: ECD1A.CH Signal #2: ECD2B.CH
 Acq On : 29 Oct 2021 12:13
 Operator : AJ\MA
 Sample : M4389-05
 Misc :
 ALS Vial : 8 Sample Multiplier: 1

Instrument :
 ECD_O
 Client Sampled :
 IRV-2021-4A

Integration File signal 1: autoint1.e
 Integration File signal 2: autoint2.e
 Quant Time: Oct 29 15:24:05 2021
 Quant Method : Z:\pestpcbsrv\HPCHEM1\ECD_0\methods\PO101821.M
 Quant Title : GC EXTRACTABLES
 QLast Update : Fri Oct 29 11:08:21 2021
 Response via : Initial Calibration
 Integrator: ChemStation 6890 Scale Mode: Small noise peaks clipped

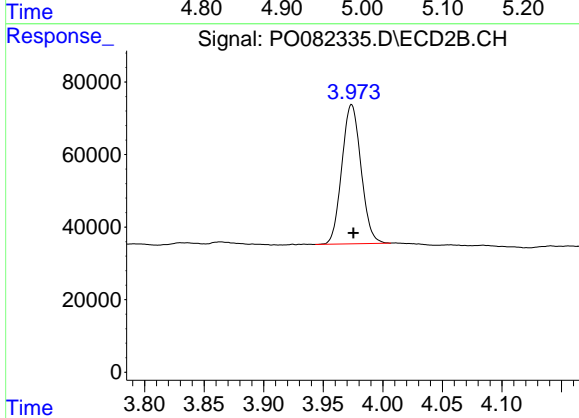
Volume Inj. : 2 µl
 Signal #1 Phase : ZB-MR1 Signal #2 Phase: ZB-MR2
 Signal #1 Info : 30Mx0.32mmx 0.50µ Signal #2 Info : 30M x 0.32mm x 0.25µm



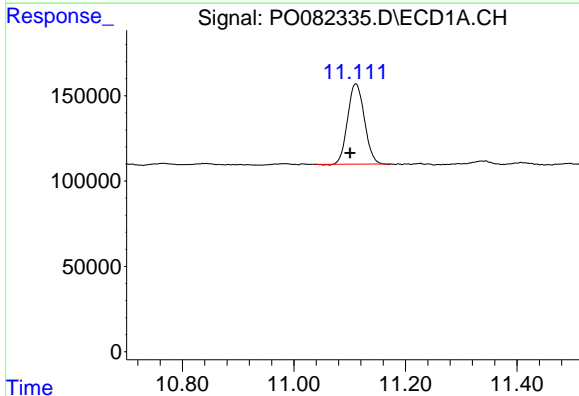


#1 Tetrachloro-m-xylene
 R.T.: 4.978 min
 Delta R.T.: -0.003 min
 Response: 1164867
 Conc: 14.42 ng/ml

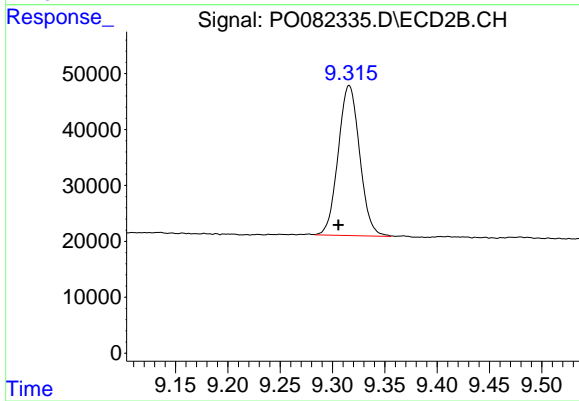
Instrument :
 ECD_O
 ClientSampleId :
 IRV-2021-4A



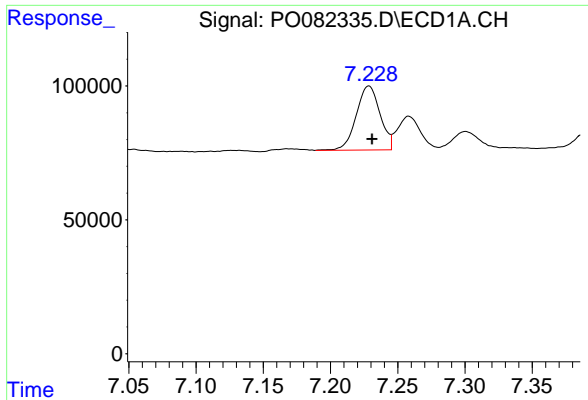
#1 Tetrachloro-m-xylene
 R.T.: 3.974 min
 Delta R.T.: -0.001 min
 Response: 429559
 Conc: 14.56 ng/ml



#2 Decachlorobiphenyl
 R.T.: 11.111 min
 Delta R.T.: 0.010 min
 Response: 978352
 Conc: 17.60 ng/ml



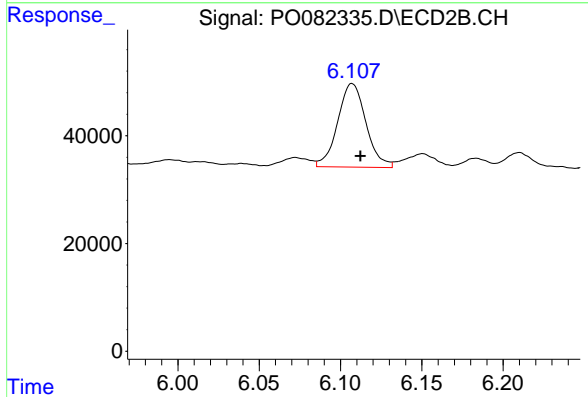
#2 Decachlorobiphenyl
 R.T.: 9.315 min
 Delta R.T.: 0.010 min
 Response: 382819
 Conc: 15.03 ng/ml m



#26 AR-1254-1

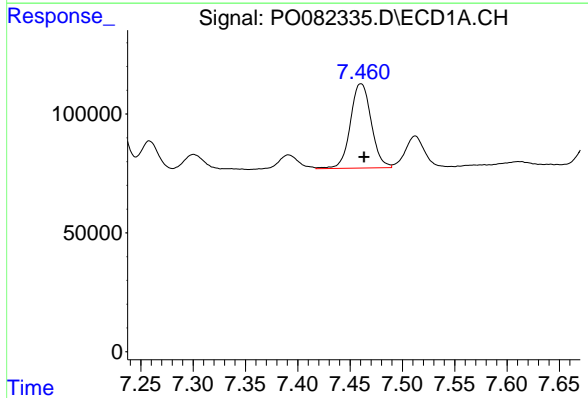
R.T.: 7.229 min
 Delta R.T.: -0.002 min
 Response: 295028
 Conc: 123.19 ng/ml

Instrument :
 ECD_O
 ClientSampleId :
 IRV-2021-4A



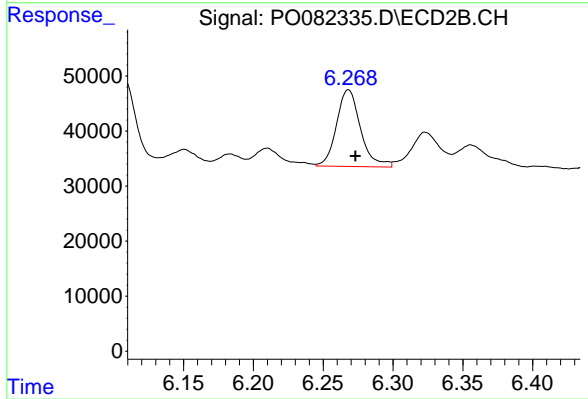
#26 AR-1254-1

R.T.: 6.107 min
 Delta R.T.: -0.005 min
 Response: 187744
 Conc: 112.74 ng/ml



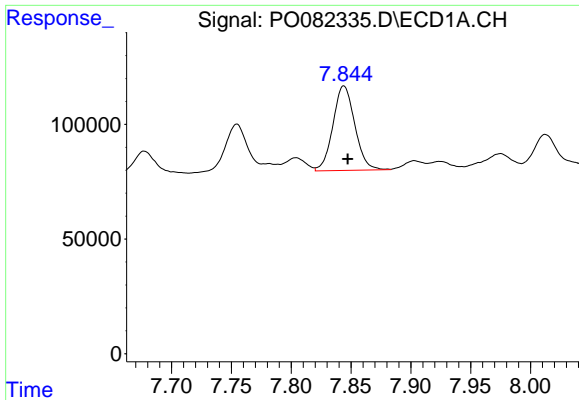
#27 AR-1254-2

R.T.: 7.460 min
 Delta R.T.: -0.003 min
 Response: 491662
 Conc: 134.79 ng/ml



#27 AR-1254-2

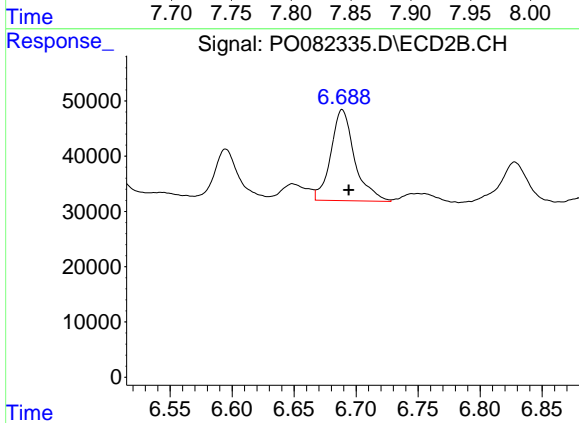
R.T.: 6.268 min
 Delta R.T.: -0.005 min
 Response: 166670
 Conc: 111.63 ng/ml



#28 AR-1254-3

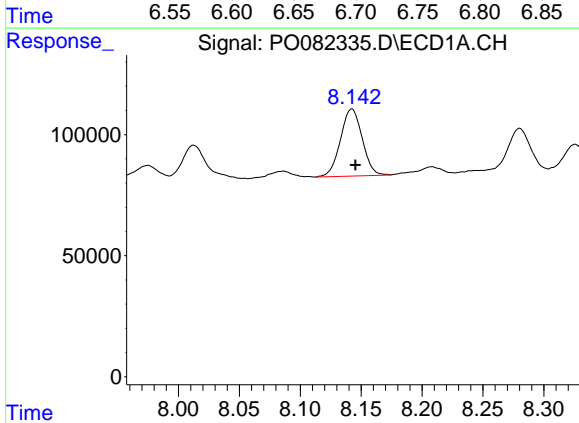
R.T.: 7.844 min
 Delta R.T.: -0.003 min
 Response: 469360
 Conc: 129.70 ng/ml

Instrument :
 ECD_O
 ClientSampleId :
 IRV-2021-4A



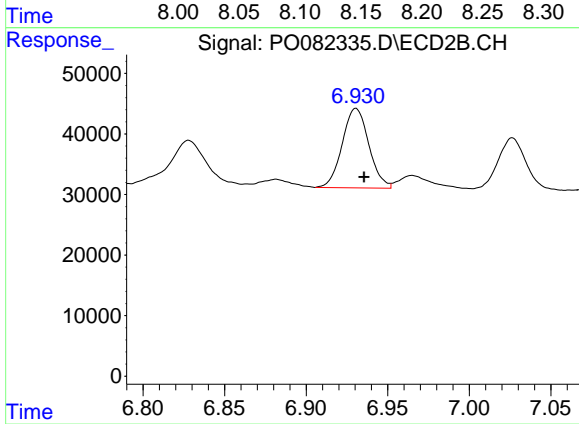
#28 AR-1254-3

R.T.: 6.689 min
 Delta R.T.: -0.005 min
 Response: 220400
 Conc: 98.42 ng/ml



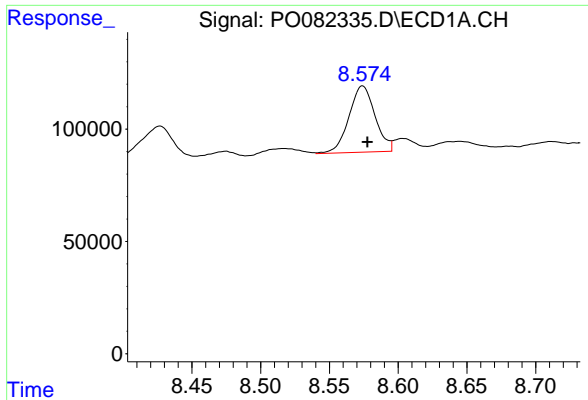
#29 AR-1254-4

R.T.: 8.142 min
 Delta R.T.: -0.003 min
 Response: 344934
 Conc: 128.00 ng/ml



#29 AR-1254-4

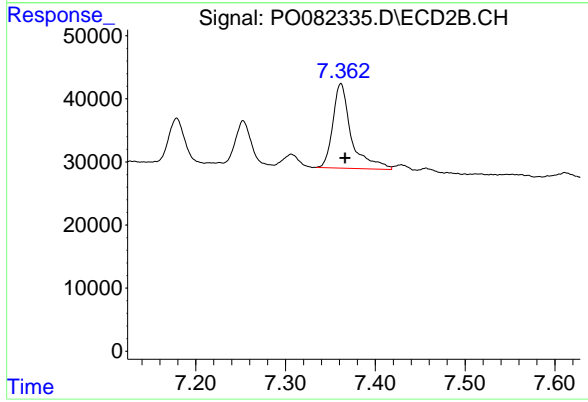
R.T.: 6.931 min
 Delta R.T.: -0.005 min
 Response: 148970
 Conc: 101.43 ng/ml



#30 AR-1254-5

R.T.: 8.574 min
Delta R.T.: -0.004 min
Response: 390096
Conc: 133.94 ng/ml

Instrument :
ECD_O
ClientSampled :
IRV-2021-4A



#30 AR-1254-5

R.T.: 7.362 min
Delta R.T.: -0.005 min
Response: 191676
Conc: 93.08 ng/ml