

Data Path : Z:\pestpcbsrv\HPCHEM1\ECD_0\Data\PO103019\
 Data File : P0063294.D
 Signal(s) : Signal #1: ECD1A.CH Signal #2: ECD2B.CH
 Acq On : 30 Oct 2019 14:12
 Operator : HP/AJ
 Sample : K5573-05RE 5X
 Misc :
 ALS Vial : 18 Sample Multiplier: 1

Instrument :
 ECD_0
 ClientSampleId :
 05-A-05-B-05-CRE

Manual Integrations
 APPROVED

Ankita
 10/31/2019 9:53:49 AM

Integration File signal 1: autoint1.e
 Integration File signal 2: autoint2.e
 Quant Time: Oct 31 01:52:39 2019
 Quant Method : Z:\pestpcbsrv\HPCHEM1\ECD_0\methods\PO102919.M
 Quant Title : GC EXTRACTABLES
 QLast Update : Wed Oct 30 02:25:39 2019
 Response via : Initial Calibration
 Integrator: ChemStation 6890 Scale Mode: Small noise peaks clipped

Volume Inj. : 2 µl
 Signal #1 Phase : ZB-MR1 Signal #2 Phase: ZB-MR2
 Signal #1 Info : 30Mx0.32mmx 0.50µ Signal #2 Info : 30M x 0.32mm x 0.25µm

| Compound | RT#1 | RT#2 | Resp#1 | Resp#2 | ng/ml | ng/ml |
|-----------------------------|-------|-------|---------|---------|----------|-----------|
| ----- | | | | | | |
| System Monitoring Compounds | | | | | | |
| 1) SA Tetrachlo... | 4.316 | 3.480 | 325226 | 308992 | 5.580 | 5.658 |
| 2) SA Decachlor... | 9.931 | 8.319 | 306521 | 200056 | 5.268 | 4.679 |
| Target Compounds | | | | | | |
| 26) L6 AR-1254-1 | 6.322 | 5.295 | 1260359 | 1087926 | 495.733 | 361.162 # |
| 27) L6 AR-1254-2 | 6.539 | 5.439 | 1251542 | 887182 | 309.404 | 328.951 |
| 28) L6 AR-1254-3 | 6.904 | 5.831 | 1113663 | 1195353 | 261.644 | 278.429 |
| 29) L6 AR-1254-4 | 7.188 | 6.055 | 608536 | 552246 | 179.785m | 193.794 |
| 30) L6 AR-1254-5 | 7.603 | 6.463 | 396742 | 514359 | 119.609m | 137.985 |
| ----- | | | | | | |

(f)=RT Delta > 1/2 Window (#)=Amounts differ by > 25% (m)=manual int.

Data Path : Z:\pestpcbsrv\HPCHEM1\ECD_O\Data\PO103019\
 Data File : PO063294.D
 Signal(s) : Signal #1: ECD1A.CH Signal #2: ECD2B.CH
 Acq On : 30 Oct 2019 14:12
 Operator : HP/AJ
 Sample : K5573-05RE 5X
 Misc :
 ALS Vial : 18 Sample Multiplier: 1

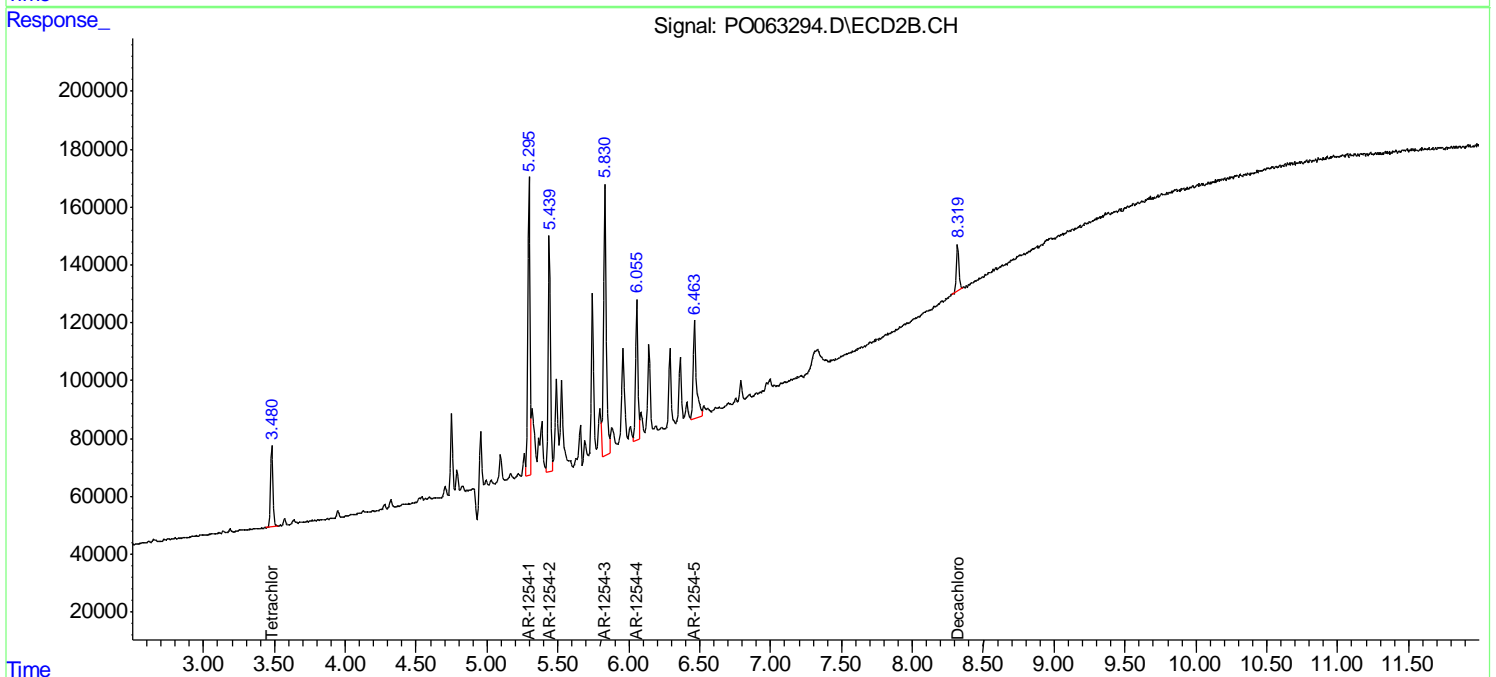
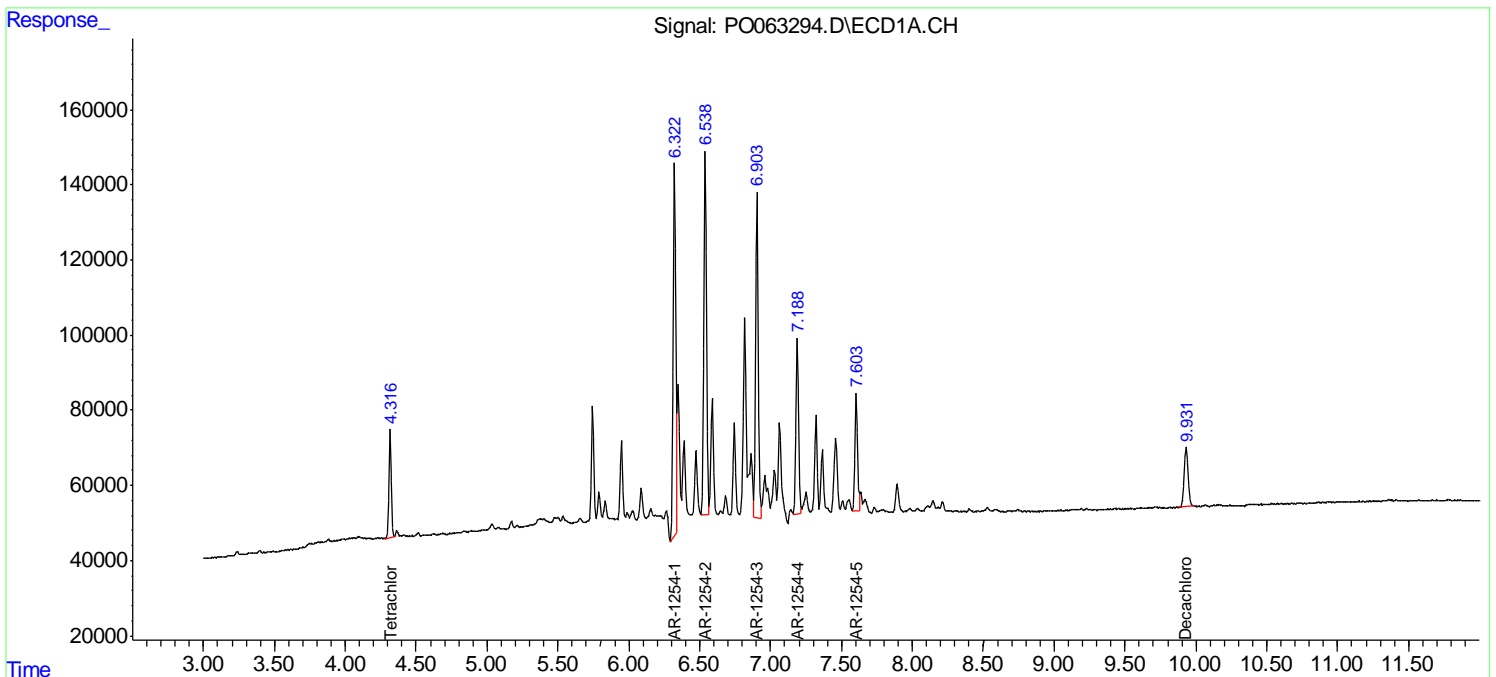
Instrument :
 ECD_O
 ClientSampleId :
 05-A-05-B-05-CRE

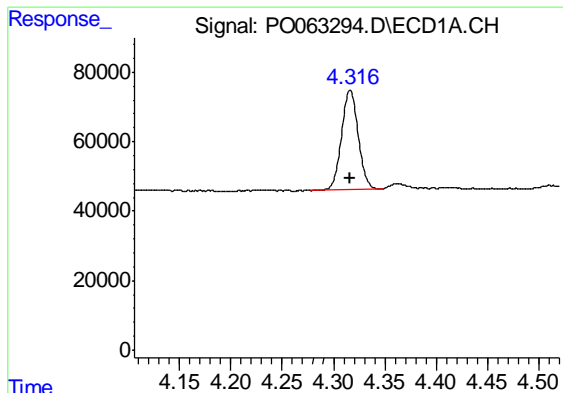
Manual Integrations
 APPROVED

Ankita
 10/31/2019 9:53:49 AM

Integration File signal 1: autoint1.e
 Integration File signal 2: autoint2.e
 Quant Time: Oct 31 01:52:39 2019
 Quant Method : Z:\pestpcbsrv\HPCHEM1\ECD_O\methods\PO102919.M
 Quant Title : GC EXTRACTABLES
 QLast Update : Wed Oct 30 02:25:39 2019
 Response via : Initial Calibration
 Integrator: ChemStation 6890 Scale Mode: Small noise peaks clipped

Volume Inj. : 2 µl
 Signal #1 Phase : ZB-MR1 Signal #2 Phase: ZB-MR2
 Signal #1 Info : 30Mx0.32mmx 0.50µ Signal #2 Info : 30M x 0.32mm x 0.25µm





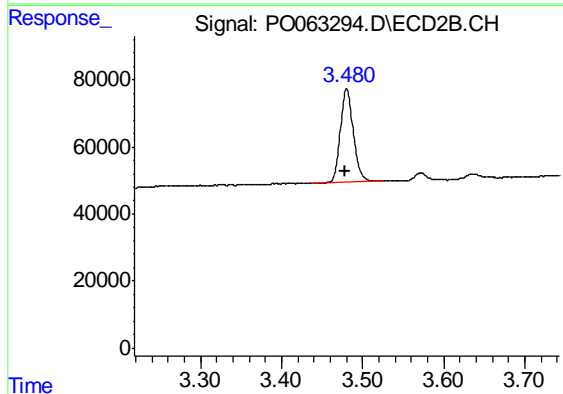
#1 Tetrachloro-m-xylene

R.T.: 4.316 min
 Delta R.T.: 0.000 min
 Response: 325226
 Conc: 5.58 ng/ml

Instrument :
 ECD_O
 ClientSampleId :
 05-A-05-B-05-CRE

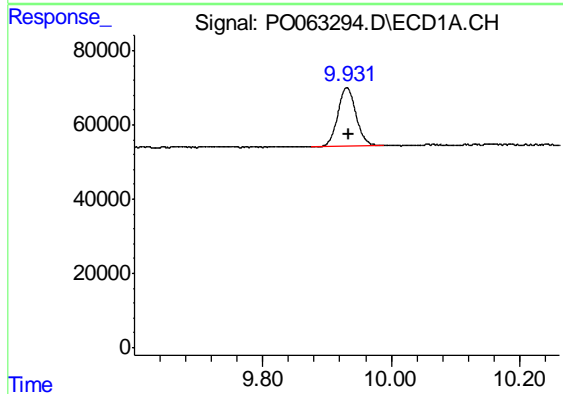
Manual Integrations
 APPROVED

Ankita
 10/31/2019 9:53:49 AM



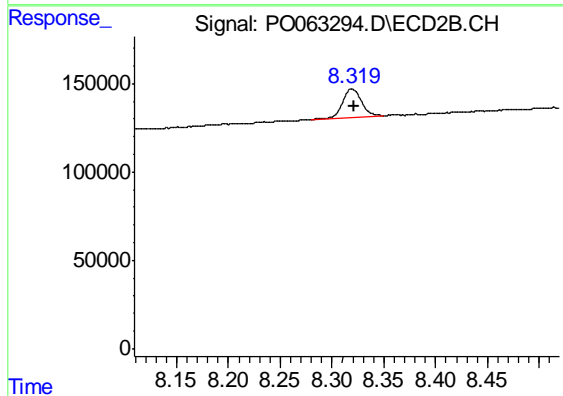
#1 Tetrachloro-m-xylene

R.T.: 3.480 min
 Delta R.T.: 0.002 min
 Response: 308992
 Conc: 5.66 ng/ml



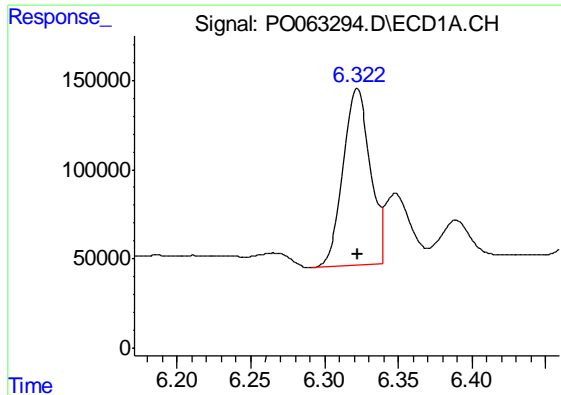
#2 Decachlorobiphenyl

R.T.: 9.931 min
 Delta R.T.: -0.002 min
 Response: 306521
 Conc: 5.27 ng/ml



#2 Decachlorobiphenyl

R.T.: 8.319 min
 Delta R.T.: -0.002 min
 Response: 200056
 Conc: 4.68 ng/ml



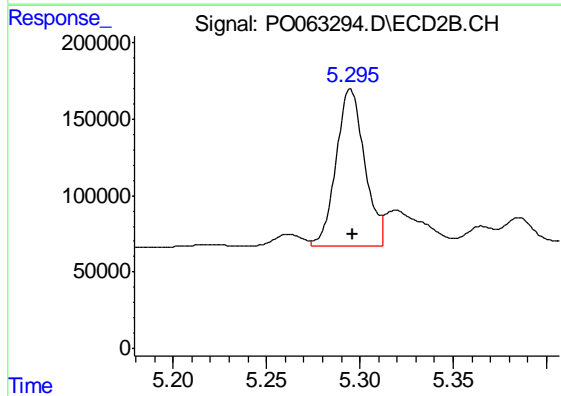
#26 AR-1254-1

R.T.: 6.322 min
 Delta R.T.: 0.000 min
 Response: 1260359
 Conc: 495.73 ng/ml

Instrument :
 ECD_O
 ClientSampleId :
 05-A-05-B-05-CRE

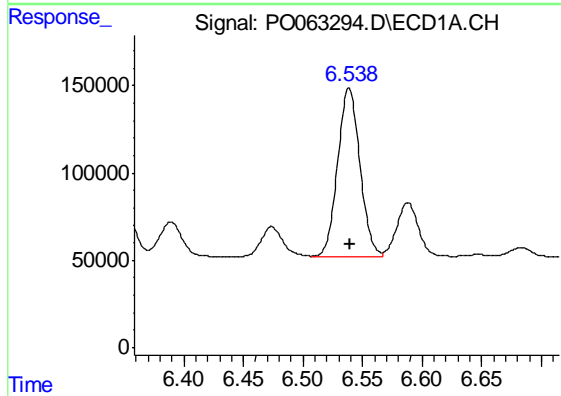
Manual Integrations
 APPROVED

Ankita
 10/31/2019 9:53:49 AM



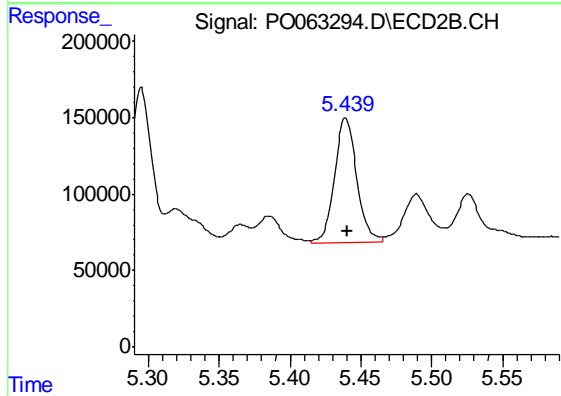
#26 AR-1254-1

R.T.: 5.295 min
 Delta R.T.: -0.001 min
 Response: 1087926
 Conc: 361.16 ng/ml



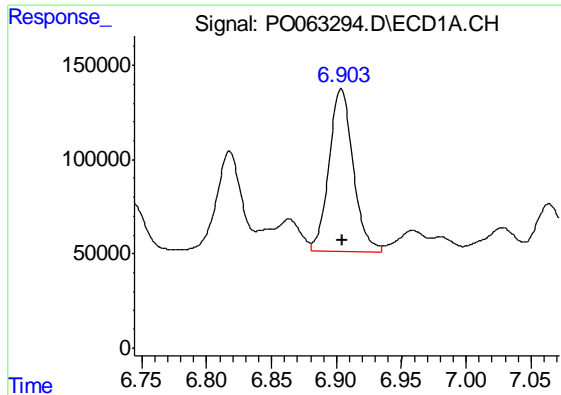
#27 AR-1254-2

R.T.: 6.539 min
 Delta R.T.: 0.000 min
 Response: 1251542
 Conc: 309.40 ng/ml



#27 AR-1254-2

R.T.: 5.439 min
 Delta R.T.: 0.000 min
 Response: 887182
 Conc: 328.95 ng/ml



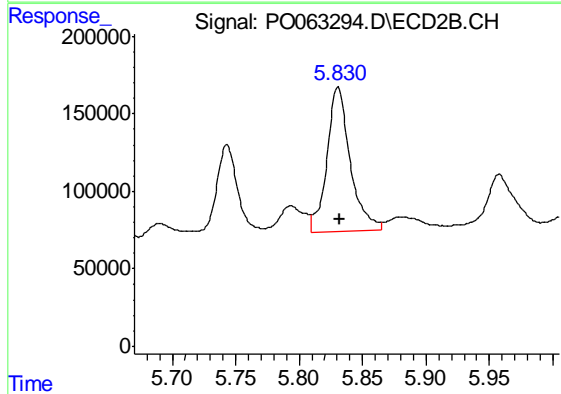
#28 AR-1254-3

R.T.: 6.904 min
 Delta R.T.: 0.000 min
 Response: 1113663
 Conc: 261.64 ng/ml

Instrument :
 ECD_O
 ClientSampleId :
 05-A-05-B-05-CRE

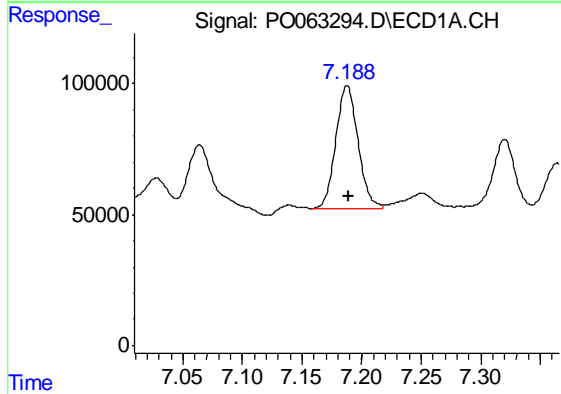
Manual Integrations
 APPROVED

Ankita
 10/31/2019 9:53:49 AM



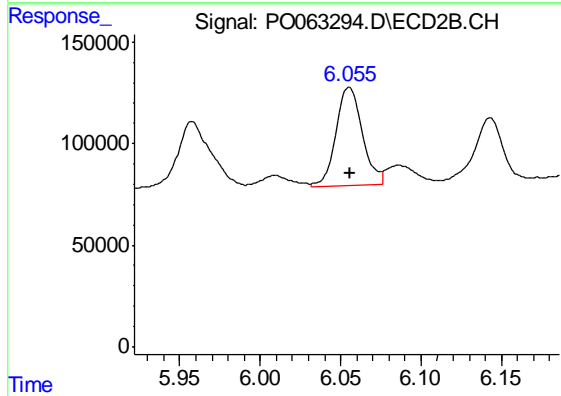
#28 AR-1254-3

R.T.: 5.831 min
 Delta R.T.: -0.002 min
 Response: 1195353
 Conc: 278.43 ng/ml



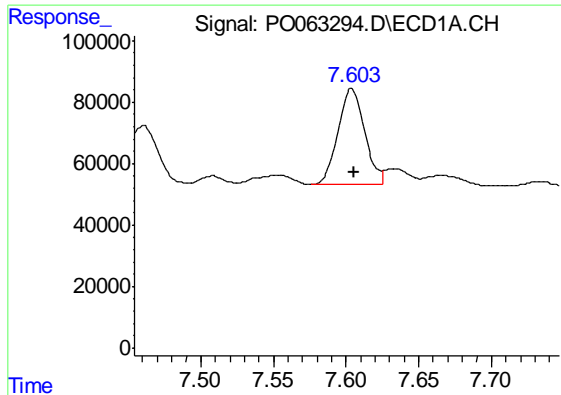
#29 AR-1254-4

R.T.: 7.188 min
 Delta R.T.: -0.001 min
 Response: 608536
 Conc: 179.79 ng/ml m



#29 AR-1254-4

R.T.: 6.055 min
 Delta R.T.: 0.000 min
 Response: 552246
 Conc: 193.79 ng/ml



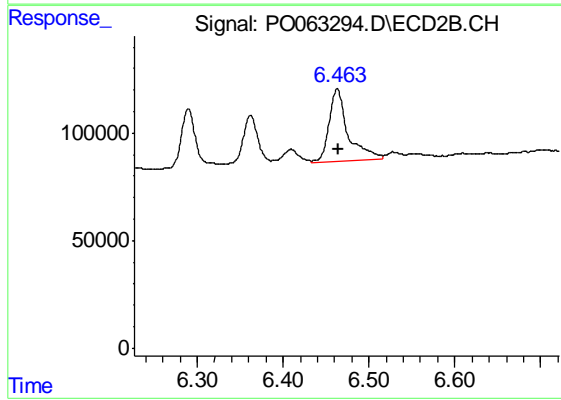
#30 AR-1254-5

R.T.: 7.603 min
Delta R.T.: -0.002 min
Response: 396742
Conc: 119.61 ng/ml m

Instrument :
ECD_O
ClientSampleId :
05-A-05-B-05-CRE

Manual Integrations
APPROVED

Ankita
10/31/2019 9:53:49 AM



#30 AR-1254-5

R.T.: 6.463 min
Delta R.T.: -0.001 min
Response: 514359
Conc: 137.98 ng/ml