

Data Path : Z:\pestpcbsrv\HPCHEM1\ECD_O\Data\PO103019\
 Data File : P0063296.D
 Signal(s) : Signal #1: ECD1A.CH Signal #2: ECD2B.CH
 Acq On : 30 Oct 2019 14:45
 Operator : HP/AJ
 Sample : I.BLK
 Misc :
 ALS Vial : 2 Sample Multiplier: 1

Instrument :
 ECD_O
 ClientSampleID :
 I.BLK

Integration File signal 1: autoint1.e
 Integration File signal 2: autoint2.e
 Quant Time: Oct 31 01:53:25 2019
 Quant Method : Z:\pestpcbsrv\HPCHEM1\ECD_O\methods\PO102919.M
 Quant Title : GC EXTRACTABLES
 QLast Update : Wed Oct 30 02:25:39 2019
 Response via : Initial Calibration
 Integrator: ChemStation 6890 Scale Mode: Small noise peaks clipped

Volume Inj. : 2 µl
 Signal #1 Phase : ZB-MR1 Signal #2 Phase: ZB-MR2
 Signal #1 Info : 30Mx0.32mmx 0.50µ Signal #2 Info : 30M x 0.32mm x 0.25µm

Compound	RT#1	RT#2	Resp#1	Resp#2	ng/ml	ng/ml
----------	------	------	--------	--------	-------	-------

 System Monitoring Compounds

1) SA Tetrachlo...	4.317	3.482	1404843	1350631	24.105	24.731
2) SA Decachlor...	9.934	8.321	1219394	873726	20.957	20.437

Target Compounds

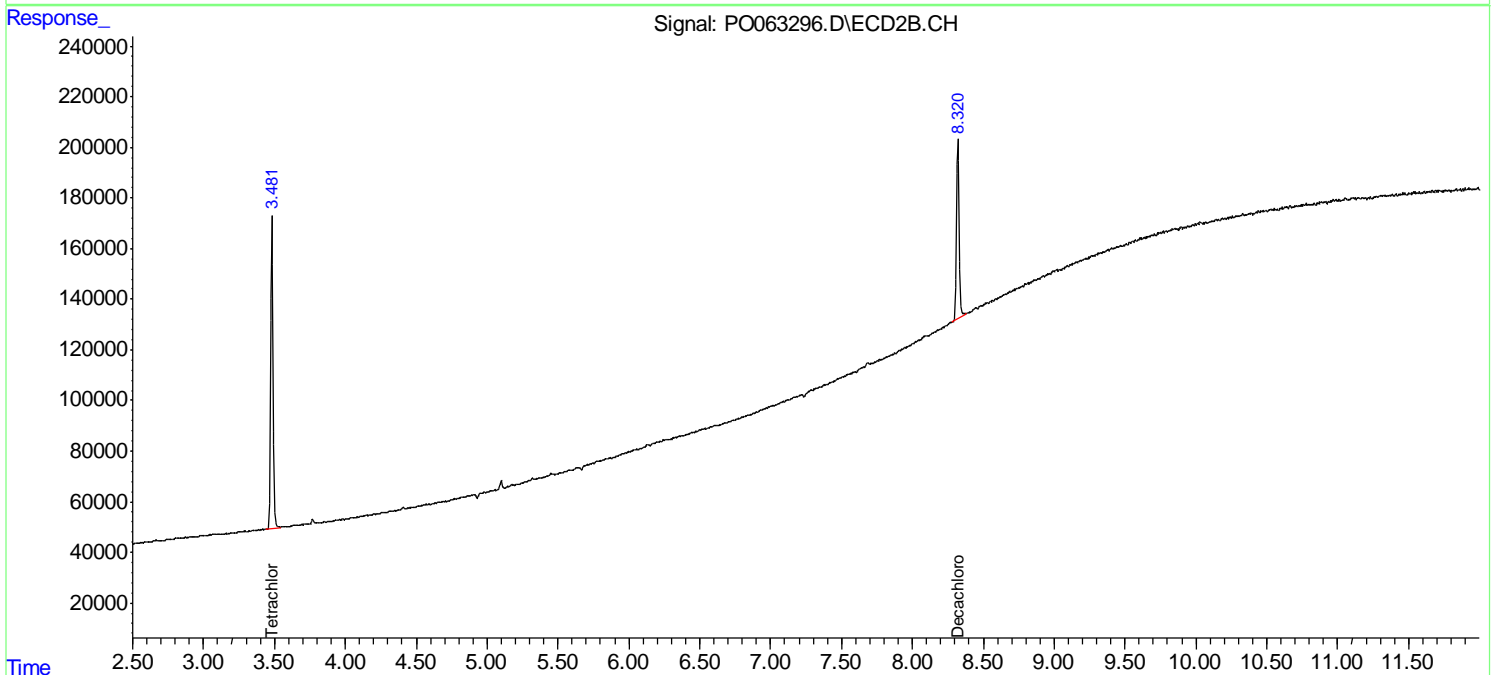
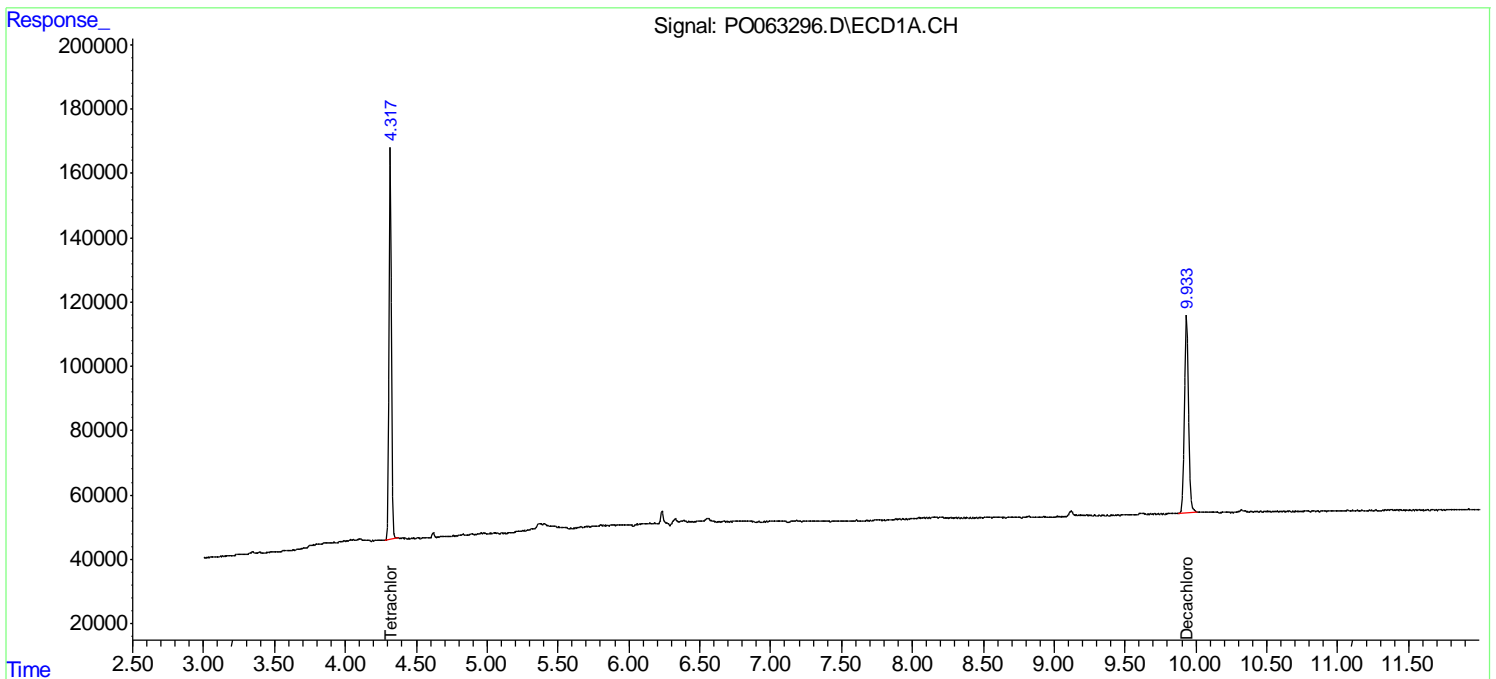
(f)=RT Delta > 1/2 Window (#)=Amounts differ by > 25% (m)=manual int.

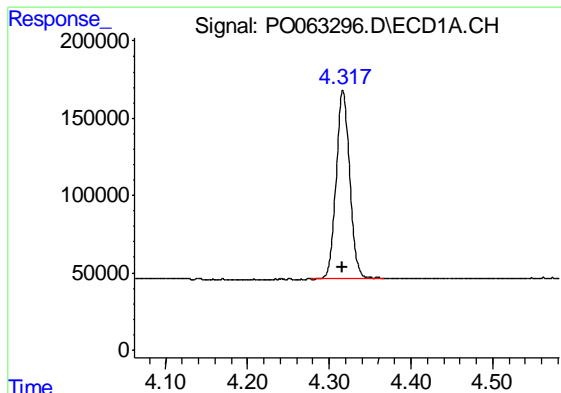
Data Path : Z:\pestpcbsrv\HPCHEM1\ECD_O\Data\PO103019\
 Data File : PO063296.D
 Signal(s) : Signal #1: ECD1A.CH Signal #2: ECD2B.CH
 Acq On : 30 Oct 2019 14:45
 Operator : HP/AJ
 Sample : I.BLK
 Misc :
 ALS Vial : 2 Sample Multiplier: 1

Instrument :
 ECD_O
 ClientSampleId :
 I.BLK

Integration File signal 1: autoint1.e
 Integration File signal 2: autoint2.e
 Quant Time: Oct 31 01:53:25 2019
 Quant Method : Z:\pestpcbsrv\HPCHEM1\ECD_O\methods\PO102919.M
 Quant Title : GC EXTRACTABLES
 QLast Update : Wed Oct 30 02:25:39 2019
 Response via : Initial Calibration
 Integrator: ChemStation 6890 Scale Mode: Small noise peaks clipped

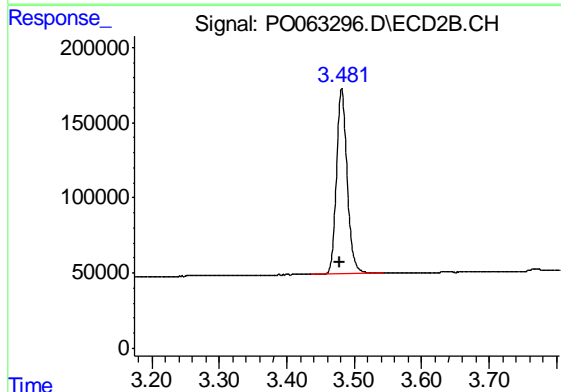
Volume Inj. : 2 µl
 Signal #1 Phase : ZB-MR1 Signal #2 Phase: ZB-MR2
 Signal #1 Info : 30Mx0.32mmx 0.50µ Signal #2 Info : 30M x 0.32mm x 0.25µm



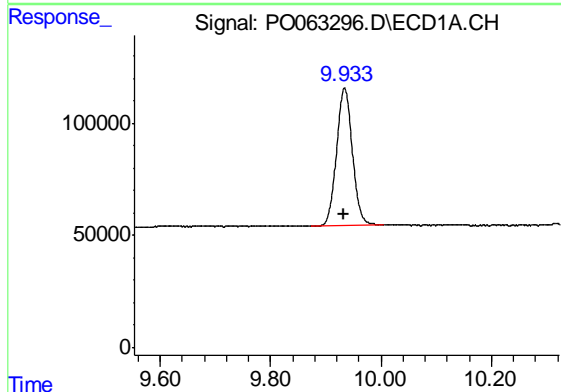


#1 Tetrachloro-m-xylene
 R.T.: 4.317 min
 Delta R.T.: 0.000 min
 Response: 1404843
 Conc: 24.10 ng/ml

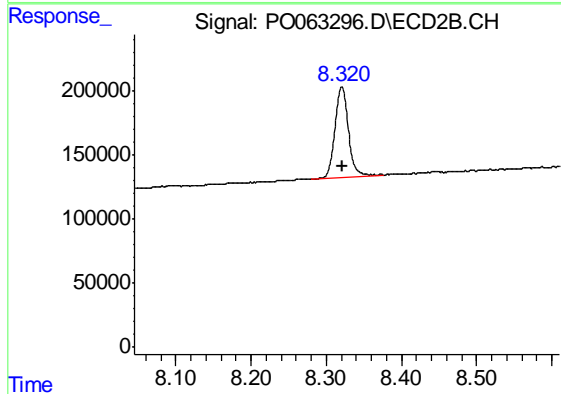
Instrument :
 ECD_O
 ClientSampled :
 I.BLK



#1 Tetrachloro-m-xylene
 R.T.: 3.482 min
 Delta R.T.: 0.004 min
 Response: 1350631
 Conc: 24.73 ng/ml



#2 Decachlorobiphenyl
 R.T.: 9.934 min
 Delta R.T.: 0.000 min
 Response: 1219394
 Conc: 20.96 ng/ml



#2 Decachlorobiphenyl
 R.T.: 8.321 min
 Delta R.T.: 0.000 min
 Response: 873726
 Conc: 20.44 ng/ml