

Data Path : Z:\pestpcbsrv\HPCHEM1\ECD_O\Data\PO103019\
 Data File : P0063307.D
 Signal(s) : Signal #1: ECD1A.CH Signal #2: ECD2B.CH
 Acq On : 30 Oct 2019 17:51
 Operator : HP/AJ
 Sample : K5599-05
 Misc :
 ALS Vial : 12 Sample Multiplier: 1

Instrument :
 ECD_O
 ClientSampleId :
 Z3-21A

Integration File signal 1: autoint1.e
 Integration File signal 2: autoint2.e
 Quant Time: Oct 31 01:56:05 2019
 Quant Method : Z:\pestpcbsrv\HPCHEM1\ECD_O\methods\PO102919.M
 Quant Title : GC EXTRACTABLES
 QLast Update : Wed Oct 30 02:25:39 2019
 Response via : Initial Calibration
 Integrator: ChemStation 6890 Scale Mode: Small noise peaks clipped

Volume Inj. : 2 µl
 Signal #1 Phase : ZB-MR1 Signal #2 Phase: ZB-MR2
 Signal #1 Info : 30Mx0.32mmx 0.50µ Signal #2 Info : 30M x 0.32mm x 0.25µm

| Compound | RT#1 | RT#2 | Resp#1 | Resp#2 | ng/ml | ng/ml |
|----------|------|------|--------|--------|-------|-------|
|----------|------|------|--------|--------|-------|-------|

 System Monitoring Compounds

| | | | | | | |
|--------------------|-------|-------|---------|---------|--------|--------|
| 1) SA Tetrachlo... | 4.316 | 3.479 | 1170137 | 1154223 | 20.077 | 21.134 |
| 2) SA Decachlor... | 9.930 | 8.320 | 1013110 | 682901 | 17.412 | 15.973 |

Target Compounds

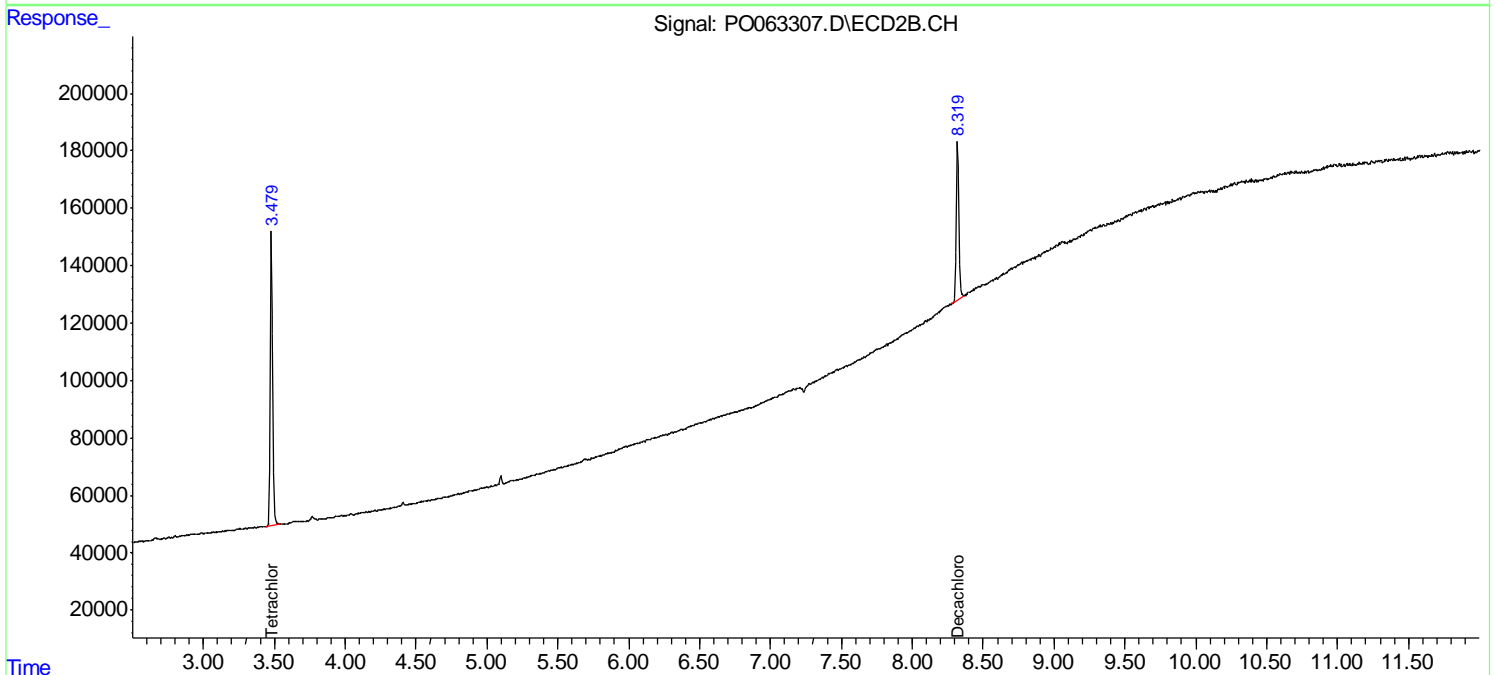
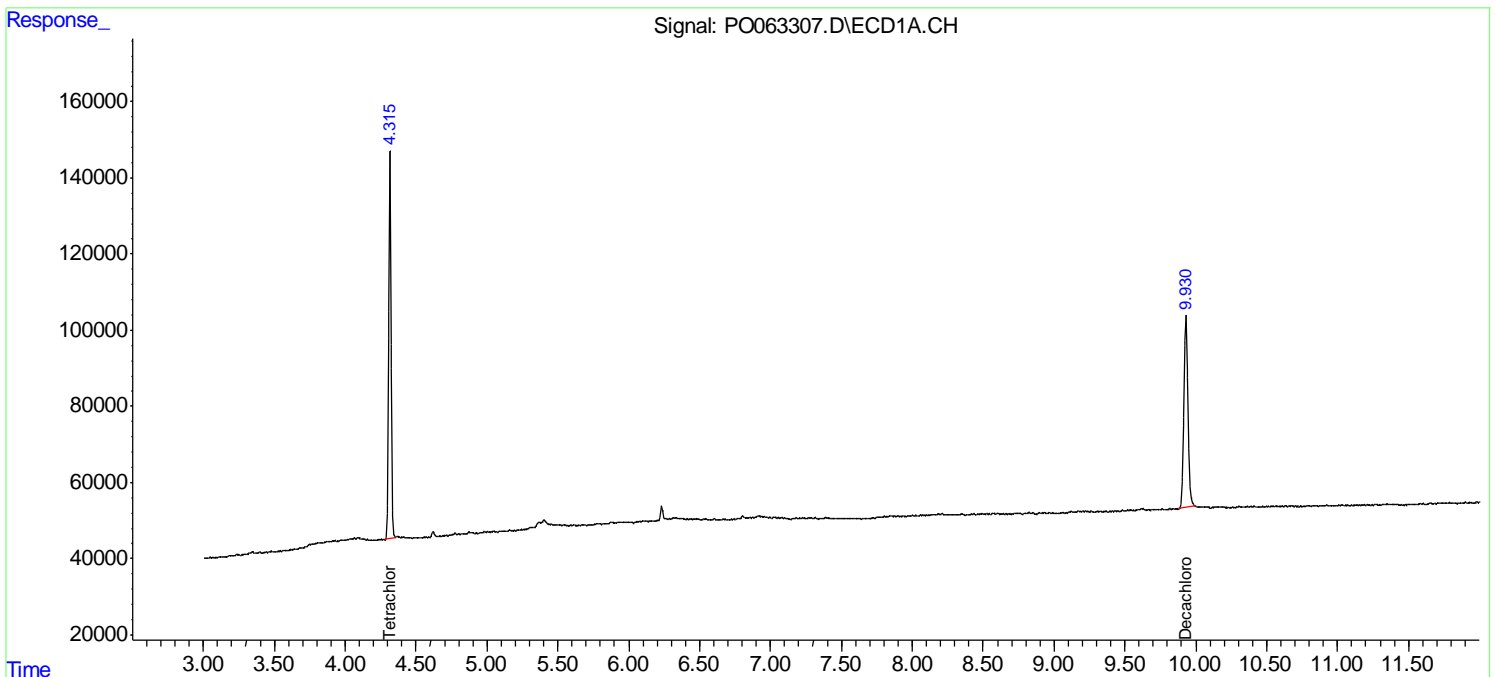
(f)=RT Delta > 1/2 Window (#)=Amounts differ by > 25% (m)=manual int.

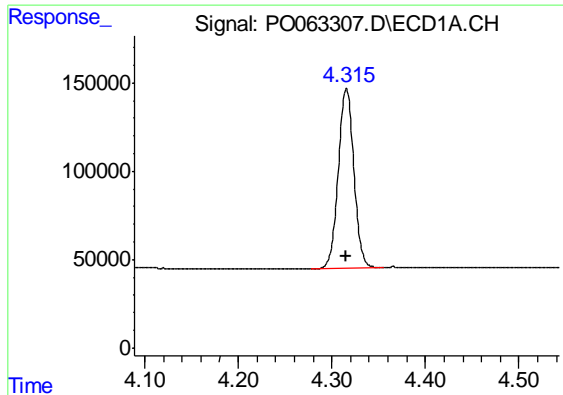
Data Path : Z:\pestpcbsrv\HPCHEM1\ECD_O\Data\PO103019\
 Data File : PO063307.D
 Signal(s) : Signal #1: ECD1A.CH Signal #2: ECD2B.CH
 Acq On : 30 Oct 2019 17:51
 Operator : HP/AJ
 Sample : K5599-05
 Misc :
 ALS Vial : 12 Sample Multiplier: 1

Instrument :
 ECD_O
 ClientSampled :
 Z3-21A

Integration File signal 1: autoint1.e
 Integration File signal 2: autoint2.e
 Quant Time: Oct 31 01:56:05 2019
 Quant Method : Z:\pestpcbsrv\HPCHEM1\ECD_O\methods\PO102919.M
 Quant Title : GC EXTRACTABLES
 QLast Update : Wed Oct 30 02:25:39 2019
 Response via : Initial Calibration
 Integrator: ChemStation 6890 Scale Mode: Small noise peaks clipped

Volume Inj. : 2 µl
 Signal #1 Phase : ZB-MR1 Signal #2 Phase: ZB-MR2
 Signal #1 Info : 30Mx0.32mmx 0.50µ Signal #2 Info : 30M x 0.32mm x 0.25µm

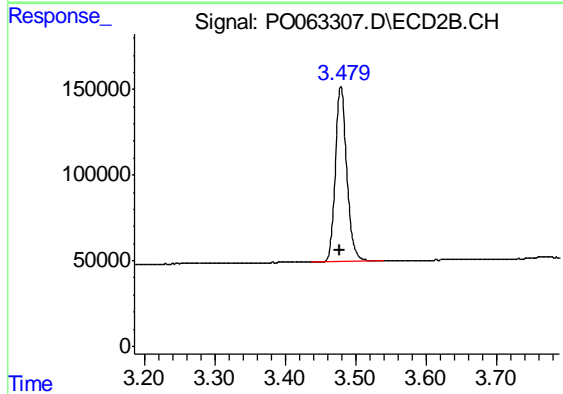




#1 Tetrachloro-m-xylene

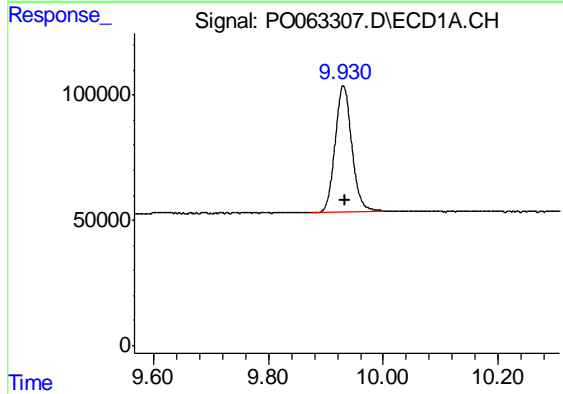
R.T.: 4.316 min
 Delta R.T.: 0.000 min
 Response: 1170137
 Conc: 20.08 ng/ml

Instrument :
 ECD_O
 ClientSampleId :
 Z3-21A



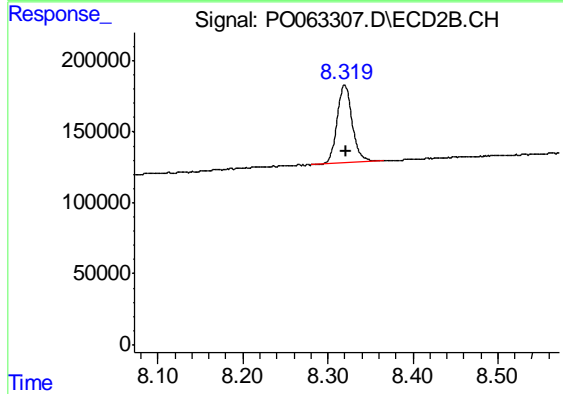
#1 Tetrachloro-m-xylene

R.T.: 3.479 min
 Delta R.T.: 0.001 min
 Response: 1154223
 Conc: 21.13 ng/ml



#2 Decachlorobiphenyl

R.T.: 9.930 min
 Delta R.T.: -0.003 min
 Response: 1013110
 Conc: 17.41 ng/ml



#2 Decachlorobiphenyl

R.T.: 8.320 min
 Delta R.T.: -0.001 min
 Response: 682901
 Conc: 15.97 ng/ml