

Data Path : Z:\pestpcbsrv\HPCHEM1\ECD_O\Data\P0103019\
 Data File : P0063317.D
 Signal(s) : Signal #1: ECD1A.CH Signal #2: ECD2B.CH
 Acq On : 30 Oct 2019 20:36
 Operator : HP/AJ
 Sample : K5602-03
 Misc :
 ALS Vial : 22 Sample Multiplier: 1

Instrument :
 ECD_O
 ClientSampleId :
 20190940-FIELD-DUP-COMPOSITE

Integration File signal 1: autoint1.e
 Integration File signal 2: autoint2.e
 Quant Time: Oct 31 01:58:53 2019
 Quant Method : Z:\pestpcbsrv\HPCHEM1\ECD_O\methods\P0102919.M
 Quant Title : GC EXTRACTABLES
 QLast Update : Wed Oct 30 02:25:39 2019
 Response via : Initial Calibration
 Integrator: ChemStation 6890 Scale Mode: Small noise peaks clipped

Volume Inj. : 2 µl
 Signal #1 Phase : ZB-MR1 Signal #2 Phase: ZB-MR2
 Signal #1 Info : 30Mx0.32mmx 0.50µ Signal #2 Info : 30M x 0.32mm x 0.25µm

Compound	RT#1	RT#2	Resp#1	Resp#2	ng/ml	ng/ml
----------	------	------	--------	--------	-------	-------

 System Monitoring Compounds

1) SA Tetrachlo...	4.315	3.479	1058811	1032369	18.167	18.903
2) SA Decachlor...	9.931	8.319	670366	459137	11.521	10.739

Target Compounds

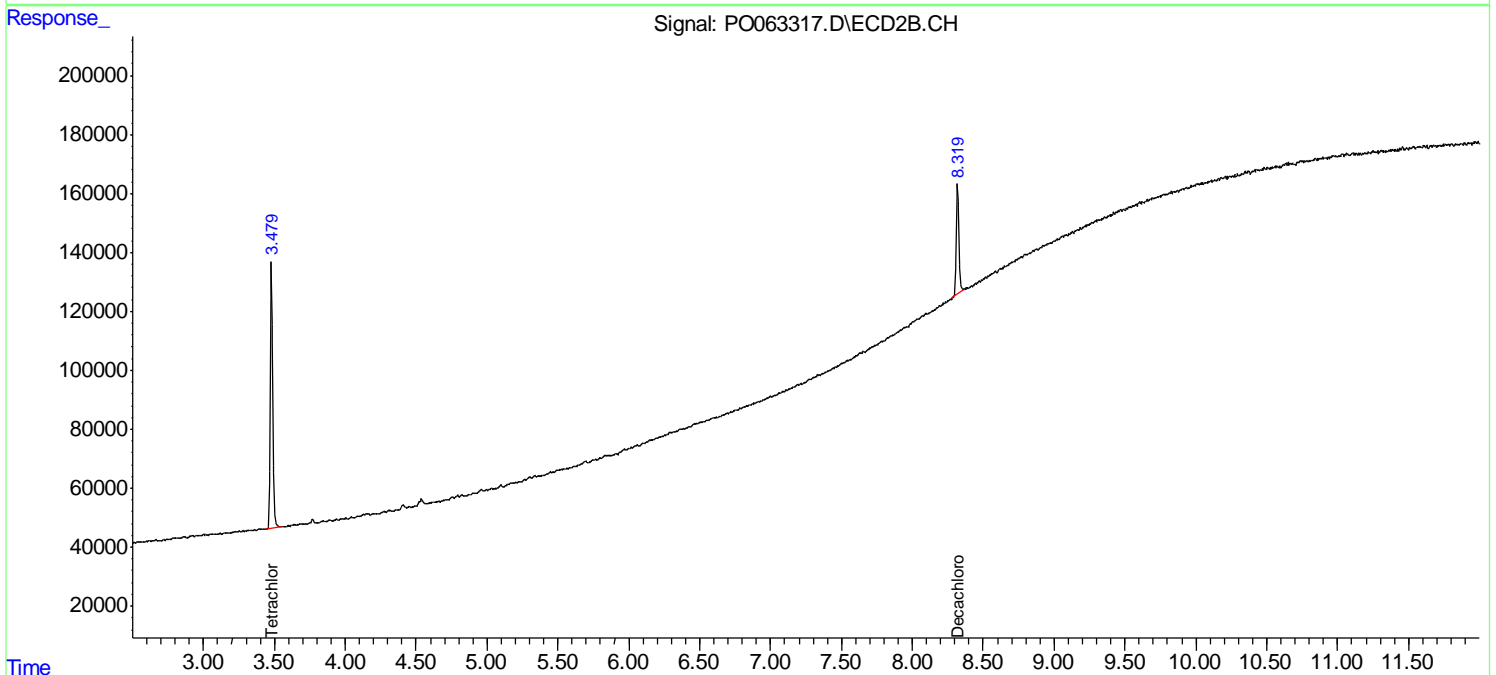
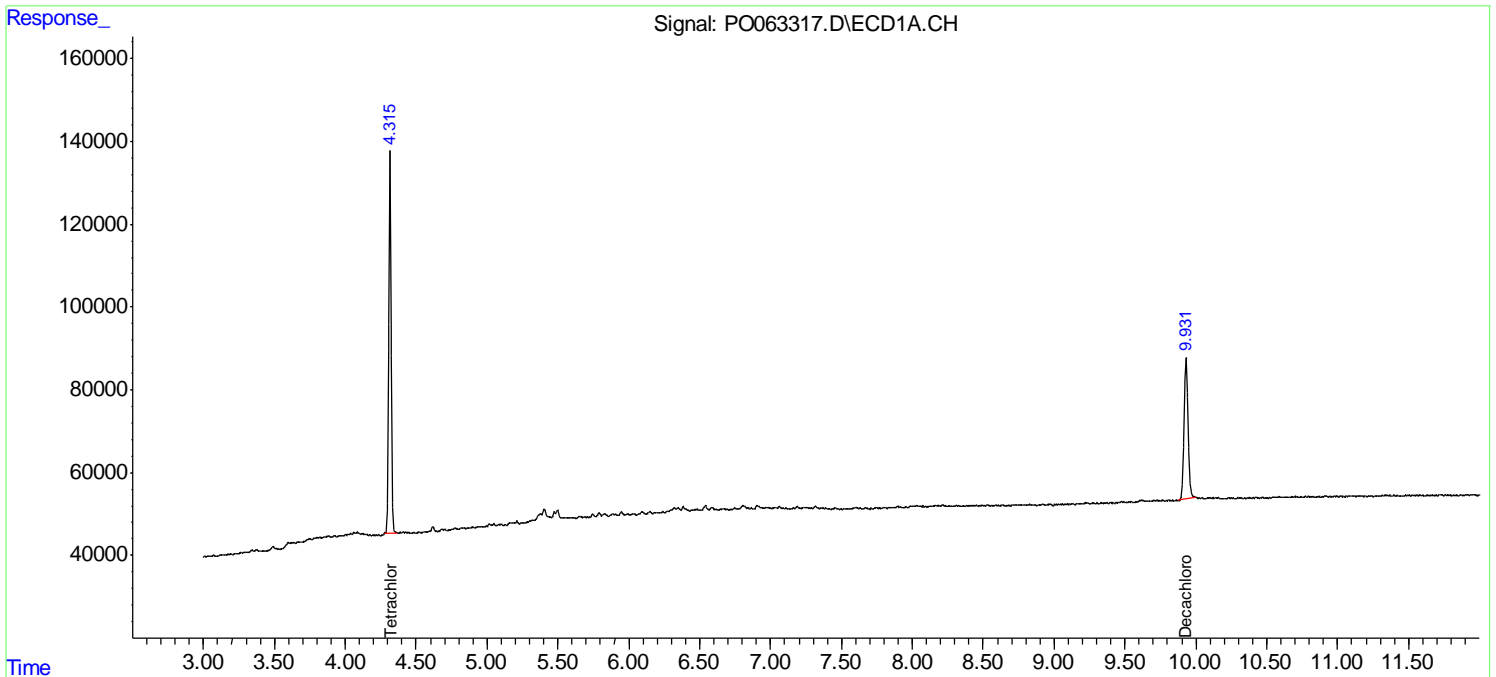
(f)=RT Delta > 1/2 Window (#)=Amounts differ by > 25% (m)=manual int.

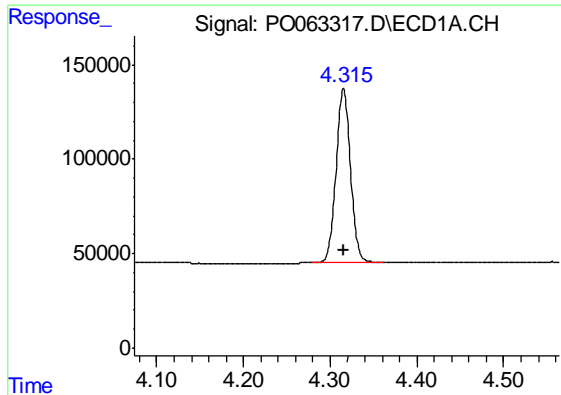
Data Path : Z:\pestpcbsrv\HPCHEM1\ECD_O\Data\PO103019\
 Data File : PO063317.D
 Signal(s) : Signal #1: ECD1A.CH Signal #2: ECD2B.CH
 Acq On : 30 Oct 2019 20:36
 Operator : HP/AJ
 Sample : K5602-03
 Misc :
 ALS Vial : 22 Sample Multiplier: 1

Instrument :
 ECD_O
ClientSampleId :
 20190940-FIELD-DUP-COMPOSITE

Integration File signal 1: autoint1.e
 Integration File signal 2: autoint2.e
 Quant Time: Oct 31 01:58:53 2019
 Quant Method : Z:\pestpcbsrv\HPCHEM1\ECD_O\methods\PO102919.M
 Quant Title : GC EXTRACTABLES
 QLast Update : Wed Oct 30 02:25:39 2019
 Response via : Initial Calibration
 Integrator: ChemStation 6890 Scale Mode: Small noise peaks clipped

Volume Inj. : 2 µl
 Signal #1 Phase : ZB-MR1 Signal #2 Phase: ZB-MR2
 Signal #1 Info : 30Mx0.32mmx 0.50µ Signal #2 Info : 30M x 0.32mm x 0.25µm

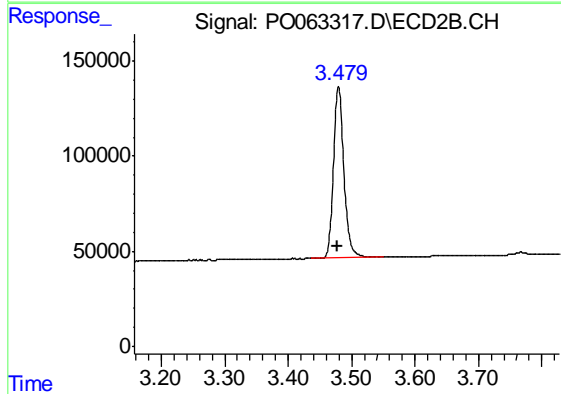




#1 Tetrachloro-m-xylene

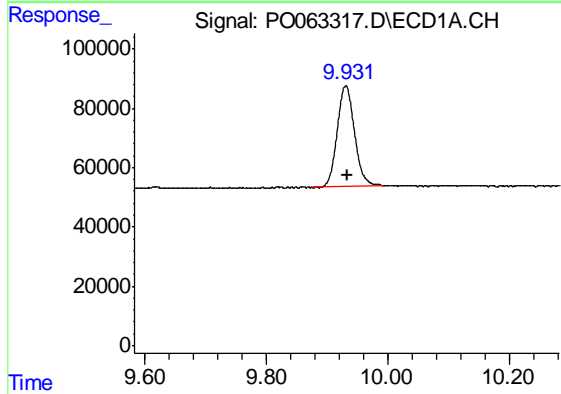
R.T.: 4.315 min
 Delta R.T.: 0.000 min
 Response: 1058811
 Conc: 18.17 ng/ml

Instrument :
 ECD_O
 ClientSampleId :
 20190940-FIELD-DUP-COMPOSITE



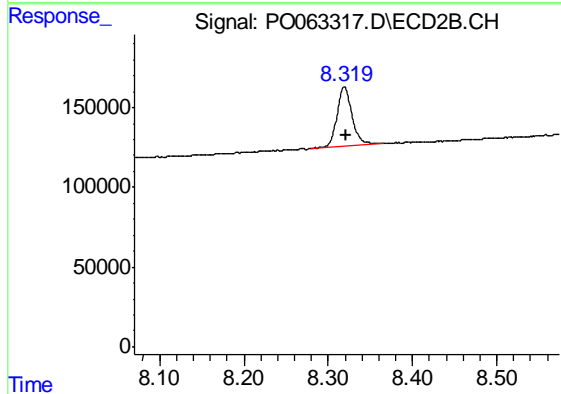
#1 Tetrachloro-m-xylene

R.T.: 3.479 min
 Delta R.T.: 0.001 min
 Response: 1032369
 Conc: 18.90 ng/ml



#2 Decachlorobiphenyl

R.T.: 9.931 min
 Delta R.T.: -0.003 min
 Response: 670366
 Conc: 11.52 ng/ml



#2 Decachlorobiphenyl

R.T.: 8.319 min
 Delta R.T.: -0.002 min
 Response: 459137
 Conc: 10.74 ng/ml