

Data Path : Z:\pestpcbsrv\HPCHEM1\ECD\_0\Data\PO103023\  
 Data File : PO099136.D  
 Signal(s) : Signal #1: ECD1A.ch Signal #2: ECD2B.ch  
 Acq On : 30 Oct 2023 15:47  
 Operator : YP/AJ  
 Sample : AR1242CCC500  
 Misc :  
 ALS Vial : 4 Sample Multiplier: 1

Instrument :  
 ECD\_0  
 ClientSampleId :

Integration File signal 1: autoint1.e  
 Integration File signal 2: autoint2.e  
 Quant Time: Oct 30 15:59:46 2023  
 Quant Method : Z:\pestpcbsrv\HPCHEM1\ECD\_0\methods\PO102523.M  
 Quant Title : GC EXTRACTABLES  
 QLast Update : Wed Oct 25 06:04:36 2023  
 Response via : Initial Calibration  
 Integrator: ChemStation

Volume Inj. : 2 µl  
 Signal #1 Phase : ZB-MR1 Signal #2 Phase: ZB-MR2  
 Signal #1 Info : 30Mx0.32mmx 0.50µ Signal #2 Info : 30M x 0.32mm x 0.25µm

Compound	RT#1	RT#2	Resp#1	Resp#2	ng/ml	ng/ml
System Monitoring Compounds						
1) SA Tetrachlo...	4.475	3.627	98251949	36555522	49.724	50.794
2) SA Decachlor...	10.283	8.629	62246376	26098735	54.946	48.643
Target Compounds						
3) L1 AR-1016-1	5.650	4.709	23090092	9544853	419.314	426.225
4) L1 AR-1016-2	5.673	4.727	33036027	13165570	399.517	421.209
5) L1 AR-1016-3	5.734	4.903	21044945	7131294	408.861	421.153
6) L1 AR-1016-4	5.834	4.945	16443128	5858108	404.571	405.188
7) L1 AR-1016-5	6.130	5.158	16814623	8403629	396.168	449.828
8) L2 AR-1221-1	4.680	3.839	3276905	1118193	131.983	120.367
9) L2 AR-1221-2	4.772	3.926	5001301	1628693	270.351	251.197
10) L2 AR-1221-3	4.848	4.002	14976305	5720767	276.435	282.827
11) L3 AR-1232-1	4.848	4.002	14976305	5720767	327.367	333.736
12) L3 AR-1232-2	5.380	4.727	19039023	13165570	806.244	859.371
13) L3 AR-1232-3	5.673	4.903	33036027	7131294	836.520	891.247
14) L3 AR-1232-4	5.834	4.986	16443128	7317142	861.849	951.047
15) L3 AR-1232-5	5.925	5.158	15003940	8403629	900.695	988.014
16) L4 AR-1242-1	5.650	4.709	23090092	9544853	533.354	543.251
17) L4 AR-1242-2	5.673	4.727	33036027	13165570	515.807	543.274
18) L4 AR-1242-3	5.734	4.903	21044945	7131294	523.172	556.233
19) L4 AR-1242-4	5.834	4.986	16443128	7317142	525.459	519.803
20) L4 AR-1242-5	6.574	5.510	18691671	9175257	605.916	549.049
21) L5 AR-1248-1	5.650	4.709	23090092	9544853	679.667	688.663
22) L5 AR-1248-2	5.925	4.945	15003940	5858108	286.700	294.917
23) L5 AR-1248-3	6.130	4.986	16814623	7317142	295.109	350.882
24) L5 AR-1248-4	6.534	5.158	16502577	8403629	302.624	341.840
25) L5 AR-1248-5	6.574	5.551	18691671	7520799	329.043	346.287
26) L6 AR-1254-1	6.507	5.510	12928602	9175257	196.403	258.944 #
27) L6 AR-1254-2	6.730	5.658	16642415	3083201	172.875	96.397 #
28) L6 AR-1254-3	7.095	6.062	7864657	3657502	87.988	74.815
29) L6 AR-1254-4	7.382	6.290	3910221	2214407	71.376	84.497
30) L6 AR-1254-5	7.803	6.708	1900564	1184517	28.226	28.099
31) L7 AR-1260-1	7.261	6.205	861089	2065330	12.016	58.549 #
32) L7 AR-1260-2	7.516	6.380	1285765	639503	16.297	15.953
33) L7 AR-1260-3	7.869	6.533	109470	514816	2.004	13.615 #
34) L7 AR-1260-4	8.094	7.003	892686	73058	14.247	2.528 #
35) L7 AR-1260-5	8.430	7.248	593585	155905	5.547	2.591 #
36) L8 AR-1262-1	7.869	6.779	109470	129521	1.209	2.760 #
37) L8 AR-1262-2	8.430	7.003	593585	73058	4.453	1.760 #
38) L8 AR-1262-3	8.749	7.537	42915	108639	0.436	3.401 #
39) L8 AR-1262-4	8.829	7.593	51455	190814	0.642	3.471 #
40) L8 AR-1262-5	9.510	8.143f	45737	101485	1.041	4.041 #
41) L9 AR-1268-1	8.749	7.537	42915	108639	0.249	1.218 #

Data Path : Z:\pestpcbsrv\HPCHEM1\ECD\_0\Data\PO103023\  
 Data File : PO099136.D  
 Signal(s) : Signal #1: ECD1A.ch Signal #2: ECD2B.ch  
 Acq On : 30 Oct 2023 15:47  
 Operator : YP/AJ  
 Sample : AR1242CCC500  
 Misc :  
 ALS Vial : 4 Sample Multiplier: 1

Instrument :  
 ECD\_0  
 ClientSampleId :

Integration File signal 1: autoint1.e  
 Integration File signal 2: autoint2.e  
 Quant Time: Oct 30 15:59:46 2023  
 Quant Method : Z:\pestpcbsrv\HPCHEM1\ECD\_0\methods\PO102523.M  
 Quant Title : GC EXTRACTABLES  
 QLast Update : Wed Oct 25 06:04:36 2023  
 Response via : Initial Calibration  
 Integrator: ChemStation

Volume Inj. : 2 µl  
 Signal #1 Phase : ZB-MR1 Signal #2 Phase: ZB-MR2  
 Signal #1 Info : 30Mx0.32mmx 0.50µ Signal #2 Info : 30M x 0.32mm x 0.25µm

	Compound	RT#1	RT#2	Resp#1	Resp#2	ng/ml	ng/ml
42)	L9 AR-1268-2	8.844	7.593	97500	190814	0.622	2.417 #
43)	L9 AR-1268-3	9.079	7.805	659546	86795	4.704	1.233 #
44)	L9 AR-1268-4	9.510	8.143f	45737	101485	0.912	3.682 #
45)	L9 AR-1268-5	9.934	8.379	538467	184670	1.316	0.969 #

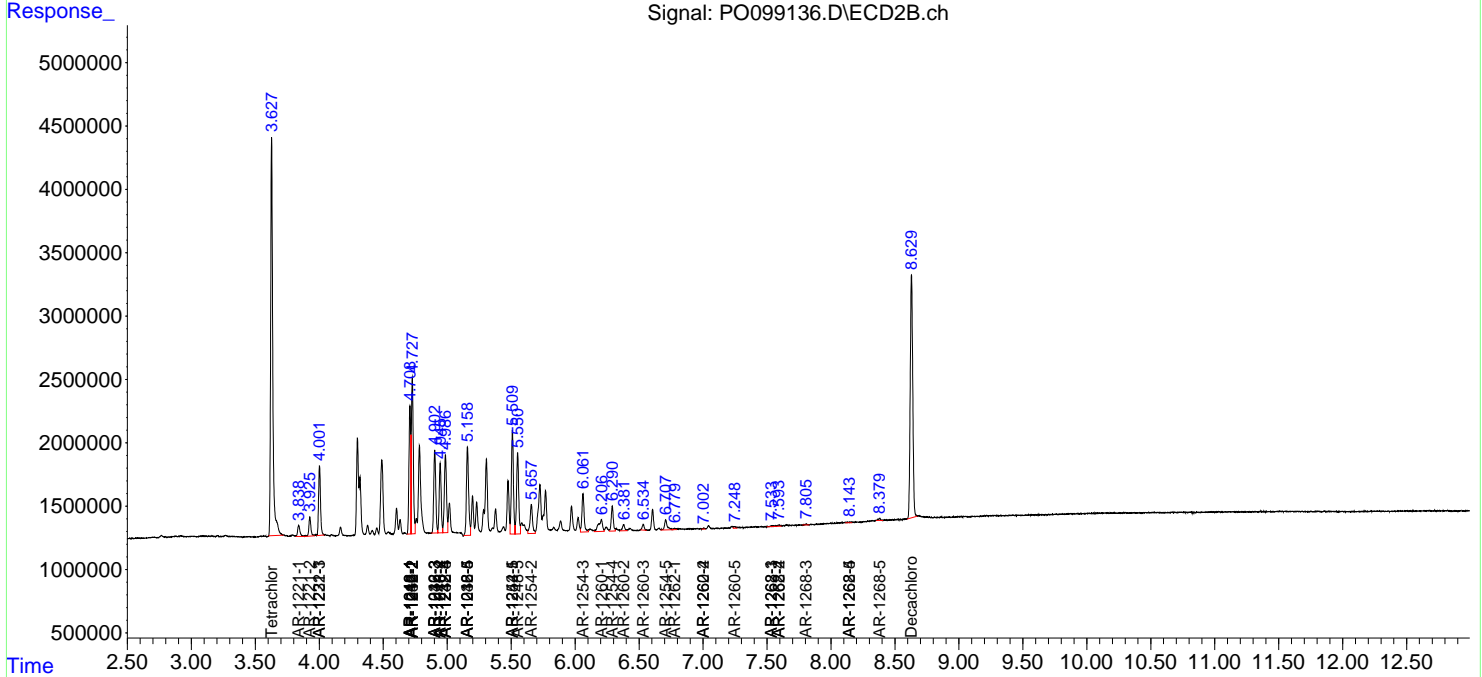
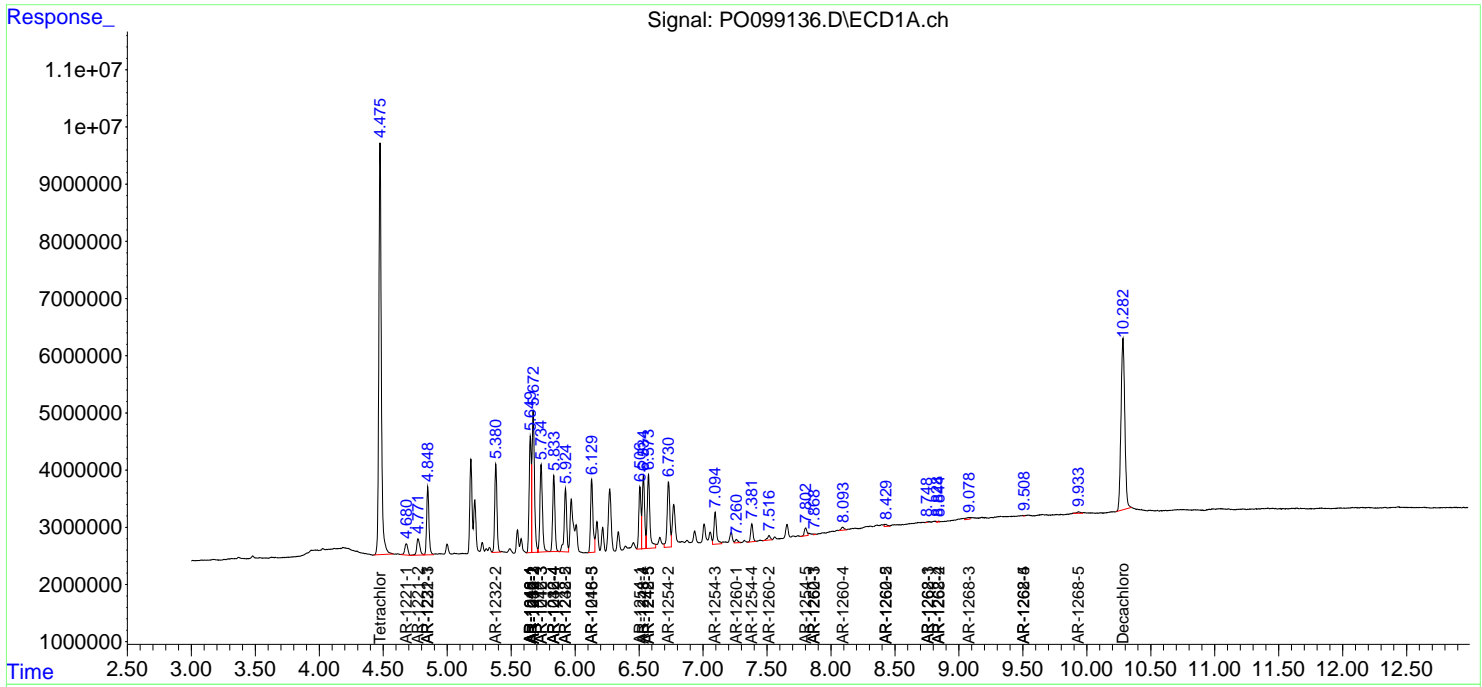
(f)=RT Delta > 1/2 Window (#)=Amounts differ by > 25% (m)=manual int.

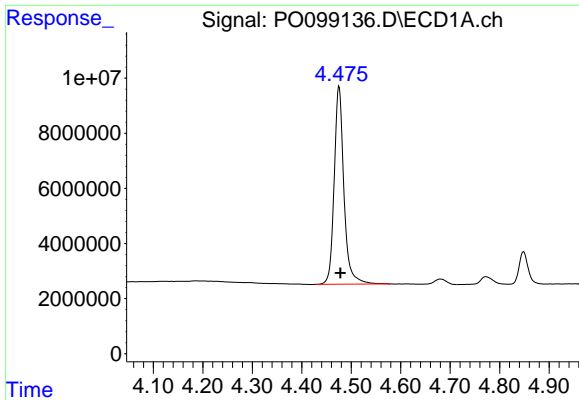
Data Path : Z:\pestpcbsrv\HPCHEM1\ECD\_O\Data\PO103023\  
 Data File : PO099136.D  
 Signal(s) : Signal #1: ECD1A.ch Signal #2: ECD2B.ch  
 Acq On : 30 Oct 2023 15:47  
 Operator : YP/AJ  
 Sample : AR1242CCC500  
 Misc :  
 ALS Vial : 4 Sample Multiplier: 1

Instrument :  
 ECD\_O  
 ClientSampleId :

Integration File signal 1: autoint1.e  
 Integration File signal 2: autoint2.e  
 Quant Time: Oct 30 15:59:46 2023  
 Quant Method : Z:\pestpcbsrv\HPCHEM1\ECD\_O\methods\PO102523.M  
 Quant Title : GC EXTRACTABLES  
 QLast Update : Wed Oct 25 06:04:36 2023  
 Response via : Initial Calibration  
 Integrator: ChemStation

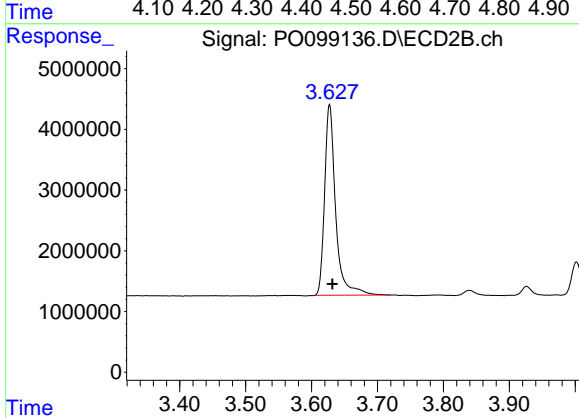
Volume Inj. : 2 µl  
 Signal #1 Phase : ZB-MR1 Signal #2 Phase: ZB-MR2  
 Signal #1 Info : 30Mx0.32mmx 0.50µ Signal #2 Info : 30M x 0.32mm x 0.25µm



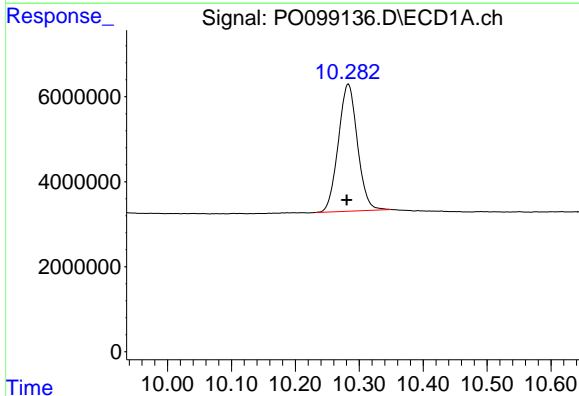


#1 Tetrachloro-m-xylene  
 R.T.: 4.475 min  
 Delta R.T.: -0.003 min  
 Response: 98251949  
 Conc: 49.72 ng/ml

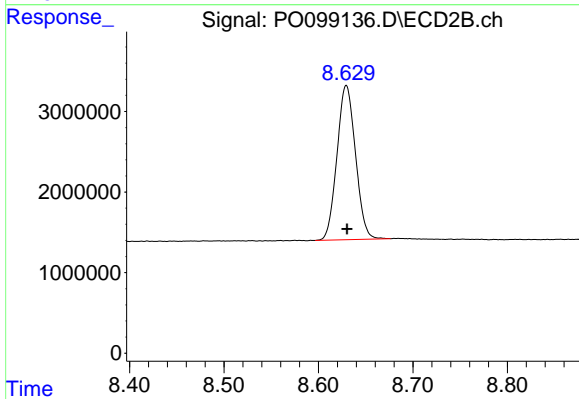
Instrument :  
 ECD\_O  
 ClientSampleId :



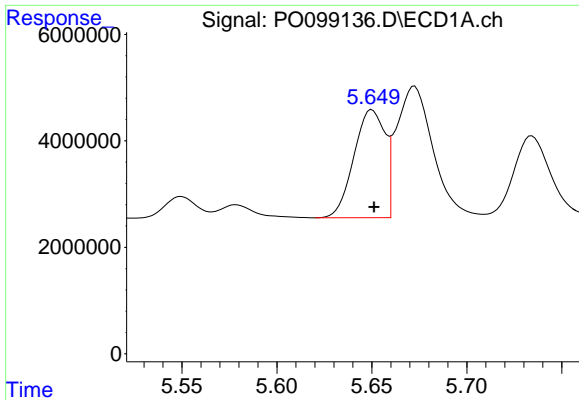
#1 Tetrachloro-m-xylene  
 R.T.: 3.627 min  
 Delta R.T.: -0.004 min  
 Response: 36555522  
 Conc: 50.79 ng/ml



#2 Decachlorobiphenyl  
 R.T.: 10.283 min  
 Delta R.T.: 0.003 min  
 Response: 62246376  
 Conc: 54.95 ng/ml



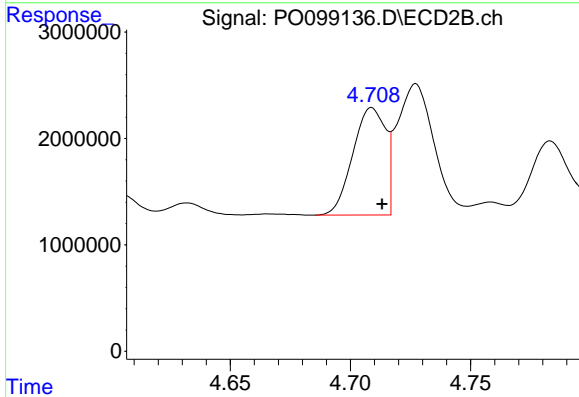
#2 Decachlorobiphenyl  
 R.T.: 8.629 min  
 Delta R.T.: 0.000 min  
 Response: 26098735  
 Conc: 48.64 ng/ml



#3 AR-1016-1

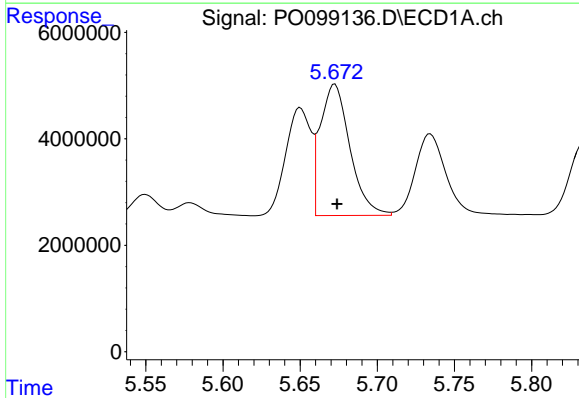
R.T.: 5.650 min  
 Delta R.T.: -0.001 min  
 Response: 23090092  
 Conc: 419.31 ng/ml

Instrument :  
 ECD\_O  
 ClientSampleId :



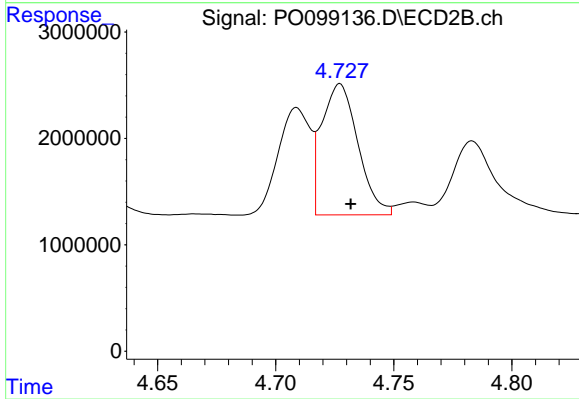
#3 AR-1016-1

R.T.: 4.709 min  
 Delta R.T.: -0.004 min  
 Response: 9544853  
 Conc: 426.22 ng/ml



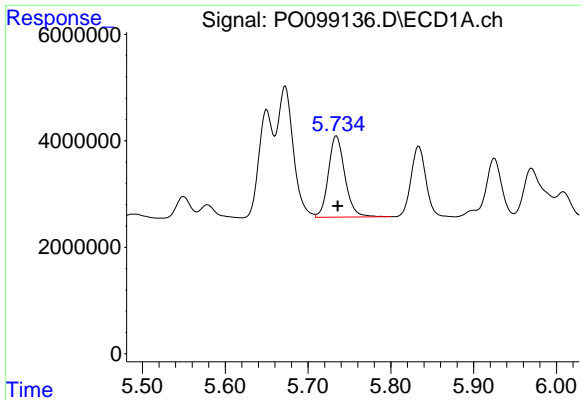
#4 AR-1016-2

R.T.: 5.673 min  
 Delta R.T.: -0.001 min  
 Response: 33036027  
 Conc: 399.52 ng/ml



#4 AR-1016-2

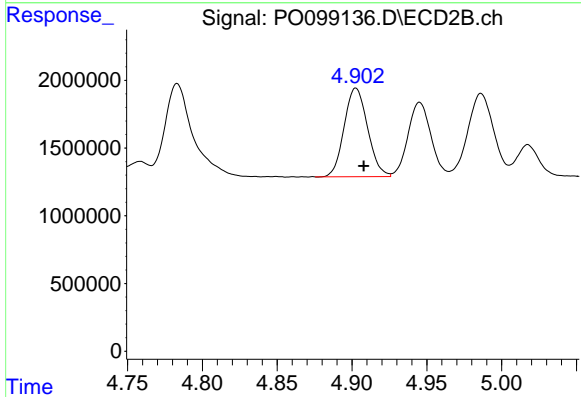
R.T.: 4.727 min  
 Delta R.T.: -0.005 min  
 Response: 13165570  
 Conc: 421.21 ng/ml



#5 AR-1016-3

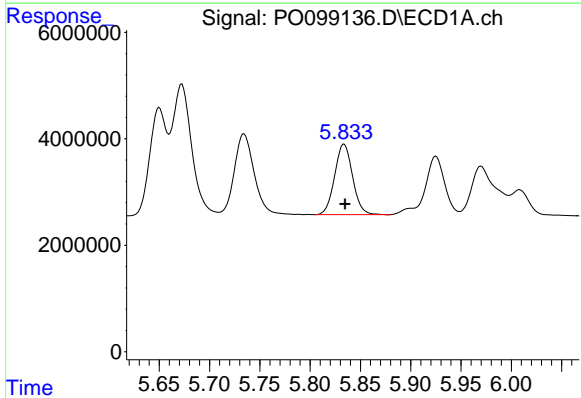
R.T.: 5.734 min  
 Delta R.T.: -0.002 min  
 Response: 21044945  
 Conc: 408.86 ng/ml

Instrument :  
 ECD\_O  
 ClientSampleId :



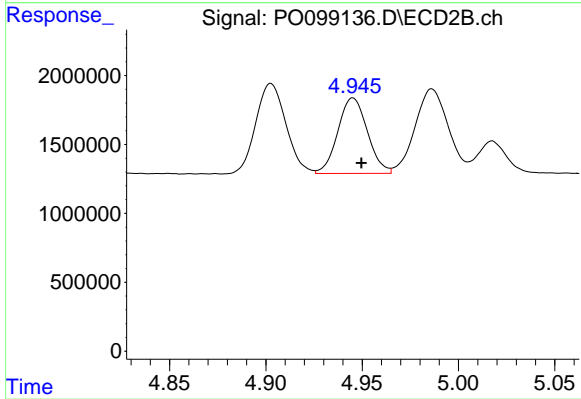
#5 AR-1016-3

R.T.: 4.903 min  
 Delta R.T.: -0.005 min  
 Response: 7131294  
 Conc: 421.15 ng/ml



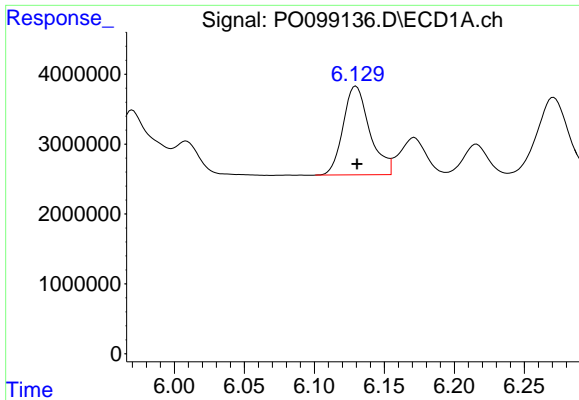
#6 AR-1016-4

R.T.: 5.834 min  
 Delta R.T.: 0.000 min  
 Response: 16443128  
 Conc: 404.57 ng/ml



#6 AR-1016-4

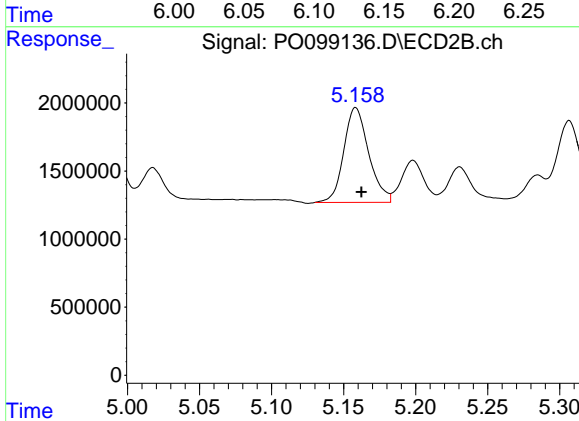
R.T.: 4.945 min  
 Delta R.T.: -0.004 min  
 Response: 5858108  
 Conc: 405.19 ng/ml



#7 AR-1016-5

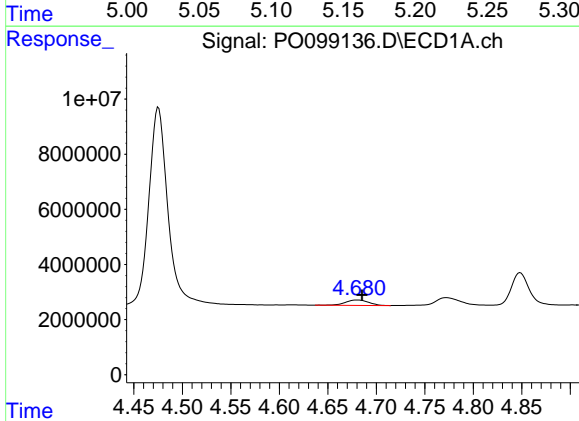
R.T.: 6.130 min  
 Delta R.T.: 0.000 min  
 Response: 16814623  
 Conc: 396.17 ng/ml

Instrument :  
 ECD\_O  
 ClientSampleId :



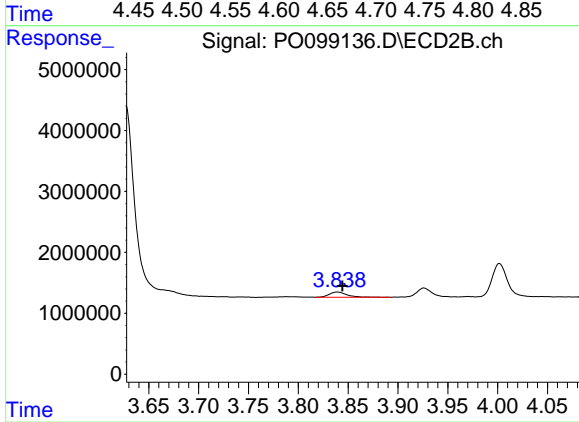
#7 AR-1016-5

R.T.: 5.158 min  
 Delta R.T.: -0.004 min  
 Response: 8403629  
 Conc: 449.83 ng/ml



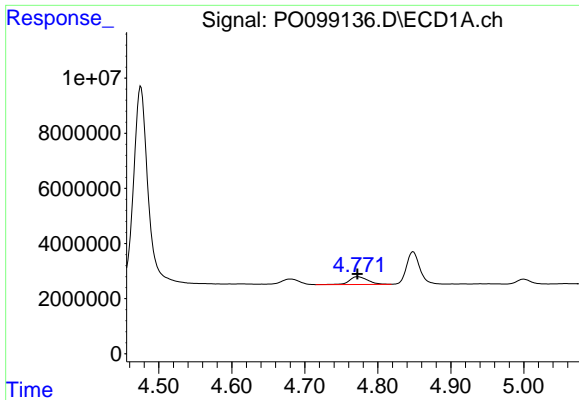
#8 AR-1221-1

R.T.: 4.680 min  
 Delta R.T.: -0.005 min  
 Response: 3276905  
 Conc: 131.98 ng/ml



#8 AR-1221-1

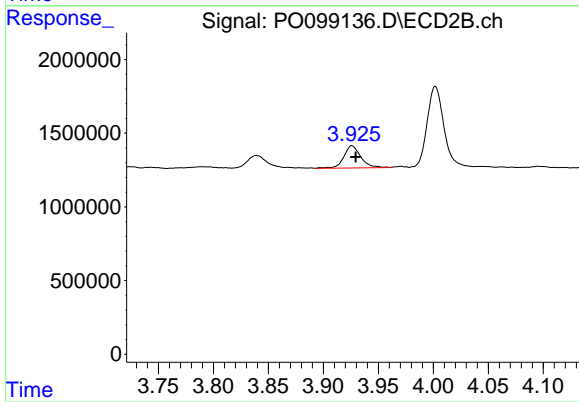
R.T.: 3.839 min  
 Delta R.T.: -0.005 min  
 Response: 1118193  
 Conc: 120.37 ng/ml



#9 AR-1221-2

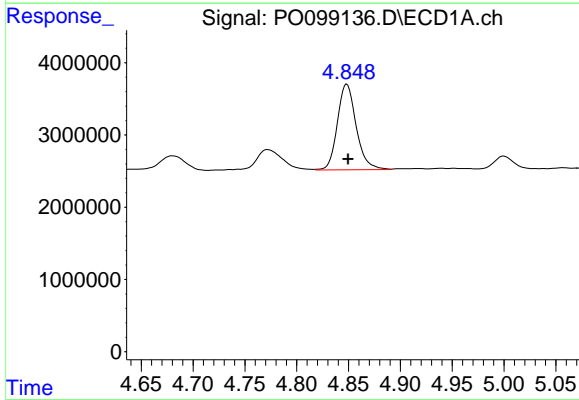
R.T.: 4.772 min  
 Delta R.T.: 0.000 min  
 Response: 5001301  
 Conc: 270.35 ng/ml

Instrument :  
 ECD\_O  
 ClientSampleId :



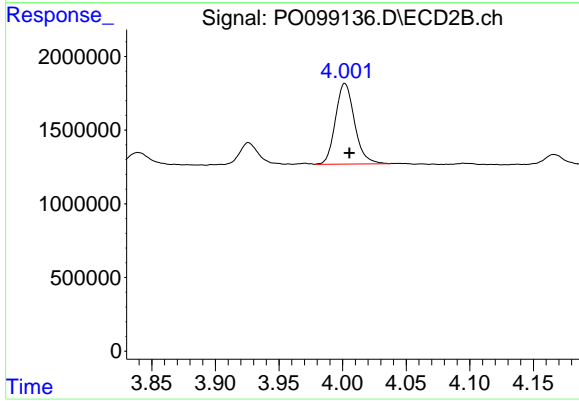
#9 AR-1221-2

R.T.: 3.926 min  
 Delta R.T.: -0.003 min  
 Response: 1628693  
 Conc: 251.20 ng/ml



#10 AR-1221-3

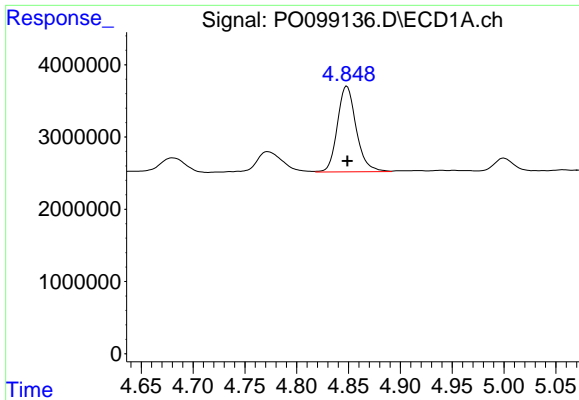
R.T.: 4.848 min  
 Delta R.T.: -0.001 min  
 Response: 14976305  
 Conc: 276.43 ng/ml



#10 AR-1221-3

R.T.: 4.002 min  
 Delta R.T.: -0.003 min  
 Response: 5720767  
 Conc: 282.83 ng/ml

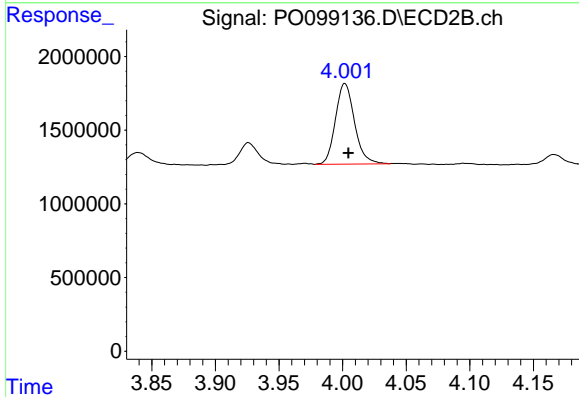




#11 AR-1232-1

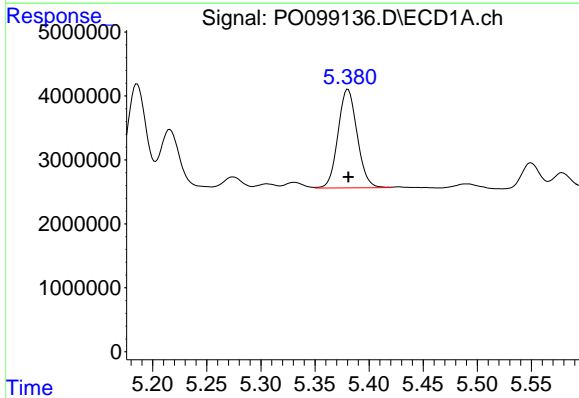
R.T.: 4.848 min  
 Delta R.T.: 0.000 min  
 Response: 14976305  
 Conc: 327.37 ng/ml

Instrument :  
 ECD\_O  
 ClientSampleId :



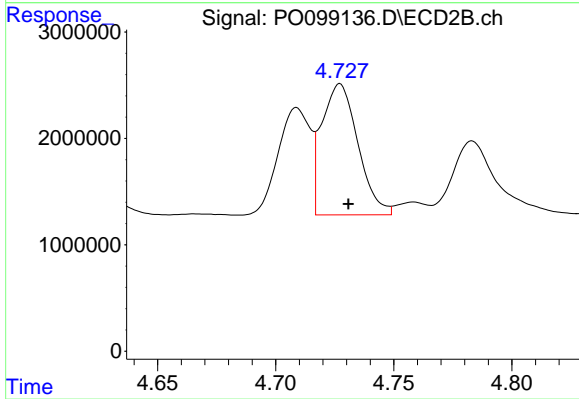
#11 AR-1232-1

R.T.: 4.002 min  
 Delta R.T.: -0.003 min  
 Response: 5720767  
 Conc: 333.74 ng/ml



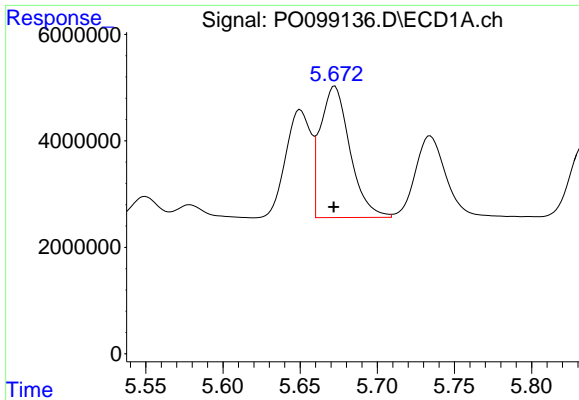
#12 AR-1232-2

R.T.: 5.380 min  
 Delta R.T.: 0.000 min  
 Response: 19039023  
 Conc: 806.24 ng/ml



#12 AR-1232-2

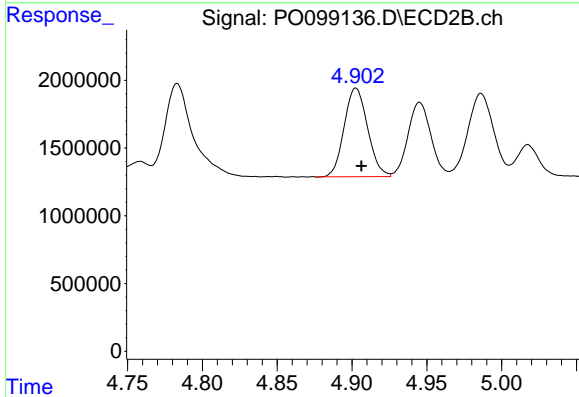
R.T.: 4.727 min  
 Delta R.T.: -0.004 min  
 Response: 13165570  
 Conc: 859.37 ng/ml



#13 AR-1232-3

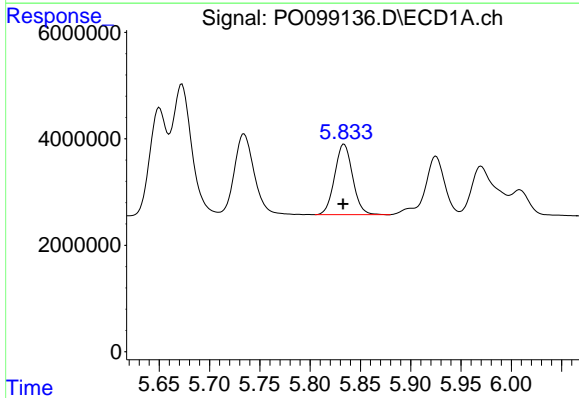
R.T.: 5.673 min  
 Delta R.T.: 0.000 min  
 Response: 33036027  
 Conc: 836.52 ng/ml

Instrument :  
 ECD\_O  
 ClientSampleId :



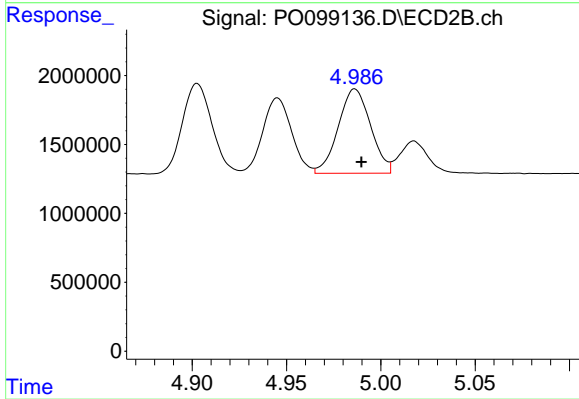
#13 AR-1232-3

R.T.: 4.903 min  
 Delta R.T.: -0.004 min  
 Response: 7131294  
 Conc: 891.25 ng/ml



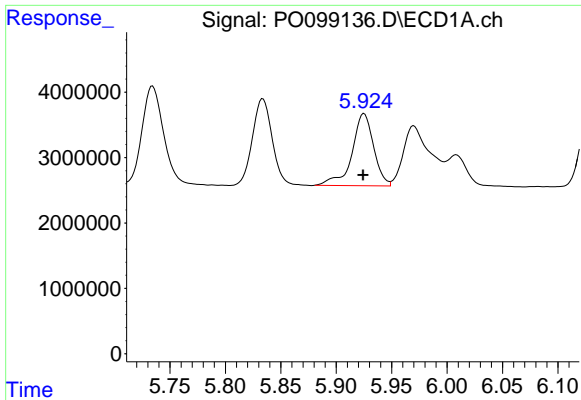
#14 AR-1232-4

R.T.: 5.834 min  
 Delta R.T.: 0.001 min  
 Response: 16443128  
 Conc: 861.85 ng/ml



#14 AR-1232-4

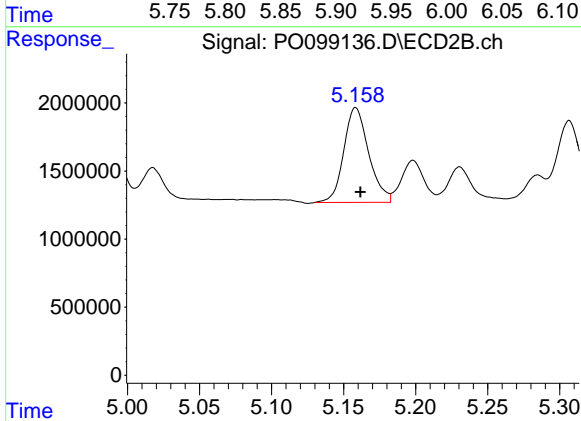
R.T.: 4.986 min  
 Delta R.T.: -0.004 min  
 Response: 7317142  
 Conc: 951.05 ng/ml



#15 AR-1232-5

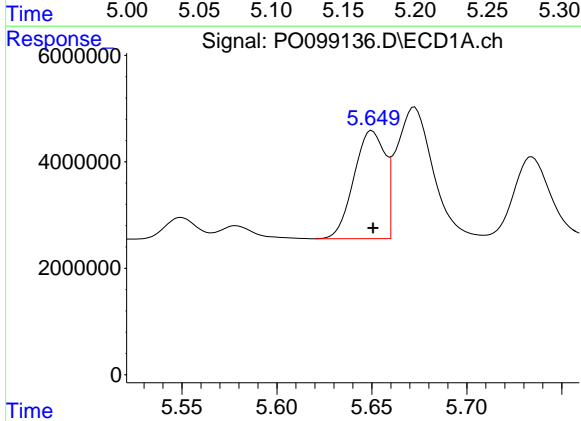
R.T.: 5.925 min  
 Delta R.T.: 0.000 min  
 Response: 15003940  
 Conc: 900.70 ng/ml

Instrument :  
 ECD\_O  
 ClientSampleId :



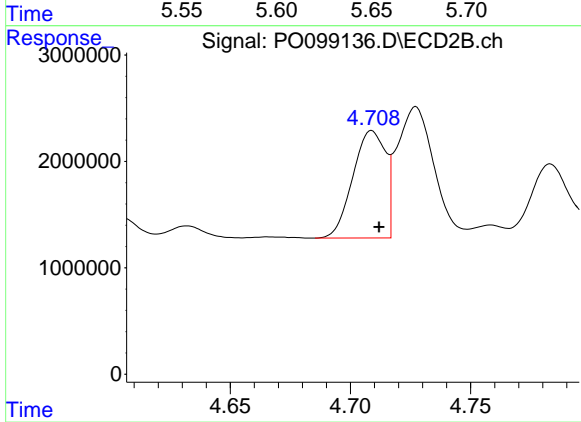
#15 AR-1232-5

R.T.: 5.158 min  
 Delta R.T.: -0.003 min  
 Response: 8403629  
 Conc: 988.01 ng/ml



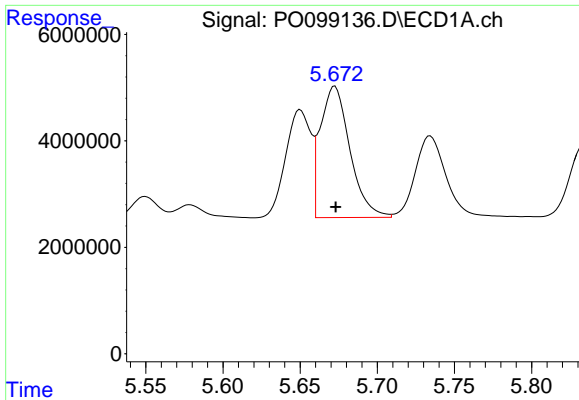
#16 AR-1242-1

R.T.: 5.650 min  
 Delta R.T.: 0.000 min  
 Response: 23090092  
 Conc: 533.35 ng/ml



#16 AR-1242-1

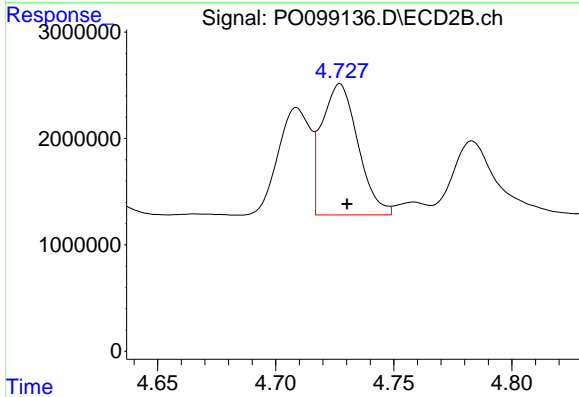
R.T.: 4.709 min  
 Delta R.T.: -0.003 min  
 Response: 9544853  
 Conc: 543.25 ng/ml



#17 AR-1242-2

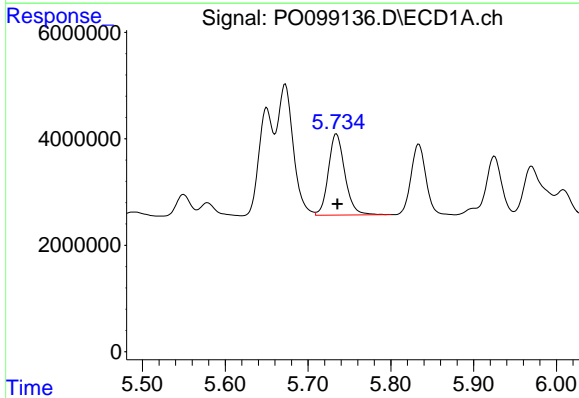
R.T.: 5.673 min  
 Delta R.T.: 0.000 min  
 Response: 33036027  
 Conc: 515.81 ng/ml

Instrument :  
 ECD\_O  
 ClientSampleId :



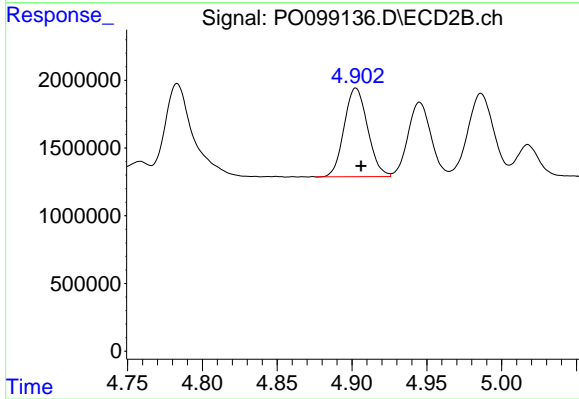
#17 AR-1242-2

R.T.: 4.727 min  
 Delta R.T.: -0.003 min  
 Response: 13165570  
 Conc: 543.27 ng/ml



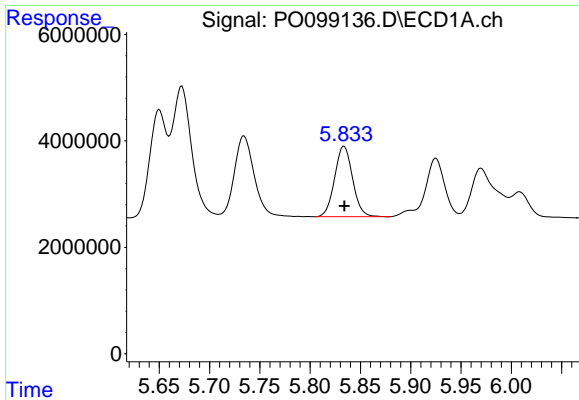
#18 AR-1242-3

R.T.: 5.734 min  
 Delta R.T.: -0.001 min  
 Response: 21044945  
 Conc: 523.17 ng/ml



#18 AR-1242-3

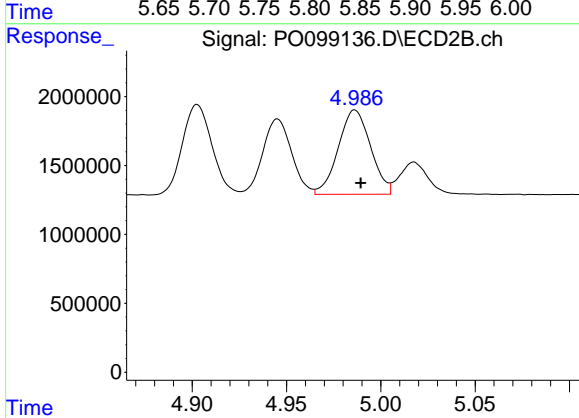
R.T.: 4.903 min  
 Delta R.T.: -0.004 min  
 Response: 7131294  
 Conc: 556.23 ng/ml



#19 AR-1242-4

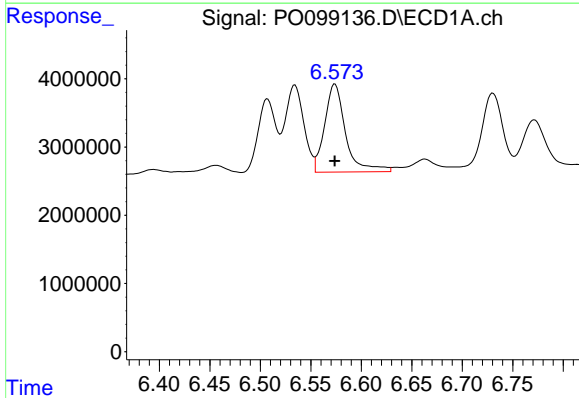
R.T.: 5.834 min  
 Delta R.T.: 0.000 min  
 Response: 16443128  
 Conc: 525.46 ng/ml

Instrument :  
 ECD\_O  
 ClientSampleId :



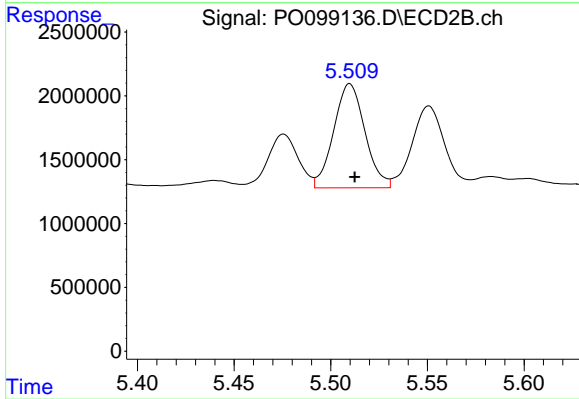
#19 AR-1242-4

R.T.: 4.986 min  
 Delta R.T.: -0.003 min  
 Response: 7317142  
 Conc: 519.80 ng/ml



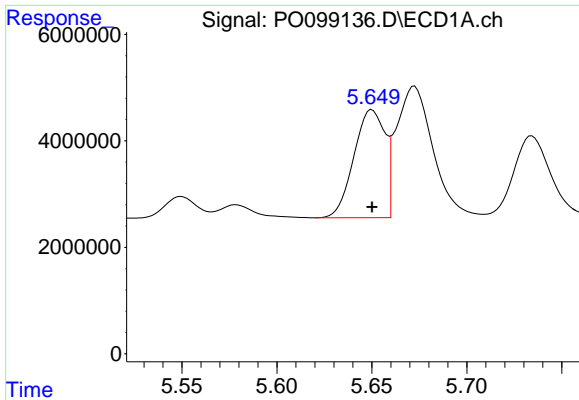
#20 AR-1242-5

R.T.: 6.574 min  
 Delta R.T.: 0.000 min  
 Response: 18691671  
 Conc: 605.92 ng/ml



#20 AR-1242-5

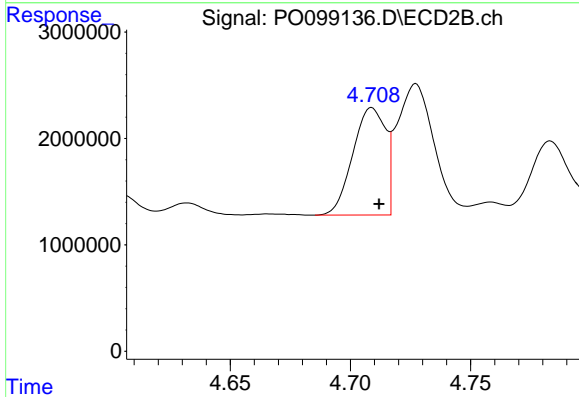
R.T.: 5.510 min  
 Delta R.T.: -0.003 min  
 Response: 9175257  
 Conc: 549.05 ng/ml



#21 AR-1248-1

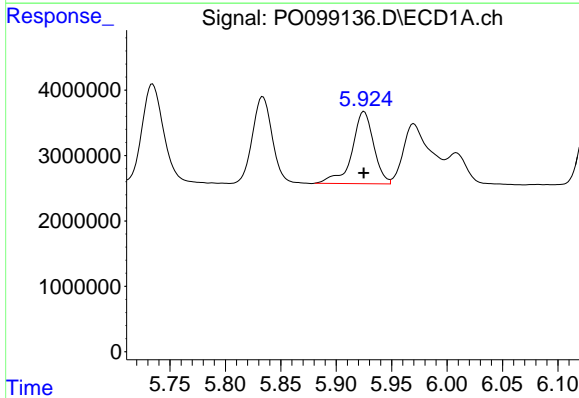
R.T.: 5.650 min  
 Delta R.T.: 0.000 min  
 Response: 23090092  
 Conc: 679.67 ng/ml

Instrument :  
 ECD\_O  
 ClientSampleId :



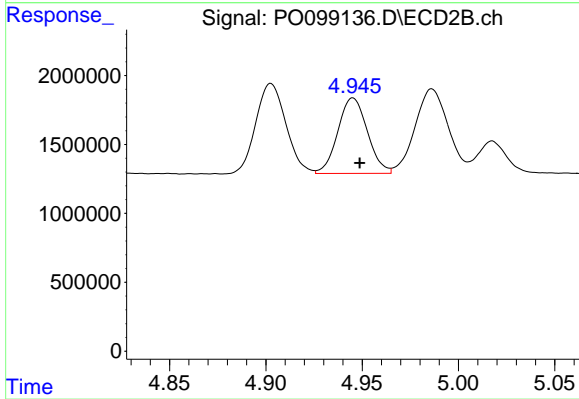
#21 AR-1248-1

R.T.: 4.709 min  
 Delta R.T.: -0.003 min  
 Response: 9544853  
 Conc: 688.66 ng/ml



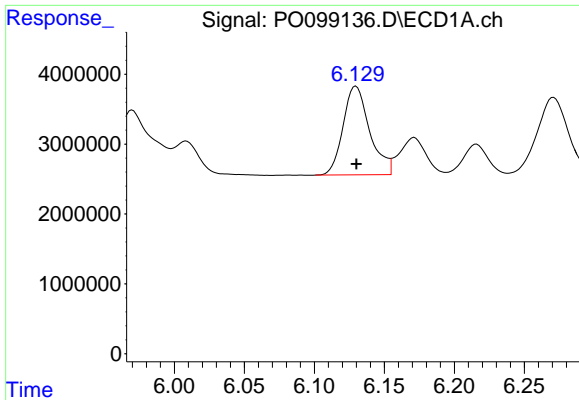
#22 AR-1248-2

R.T.: 5.925 min  
 Delta R.T.: 0.000 min  
 Response: 15003940  
 Conc: 286.70 ng/ml



#22 AR-1248-2

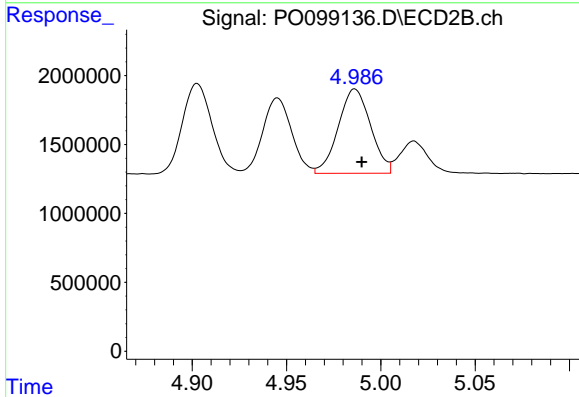
R.T.: 4.945 min  
 Delta R.T.: -0.004 min  
 Response: 5858108  
 Conc: 294.92 ng/ml



#23 AR-1248-3

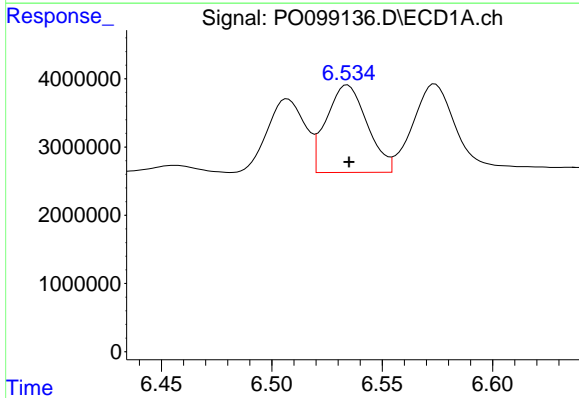
R.T.: 6.130 min  
 Delta R.T.: 0.000 min  
 Response: 16814623  
 Conc: 295.11 ng/ml

Instrument :  
 ECD\_O  
 ClientSampleId :



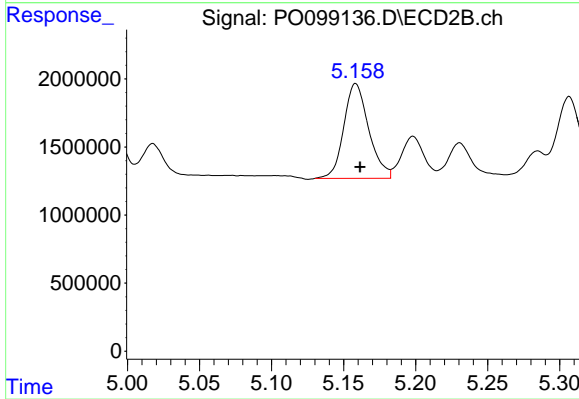
#23 AR-1248-3

R.T.: 4.986 min  
 Delta R.T.: -0.004 min  
 Response: 7317142  
 Conc: 350.88 ng/ml



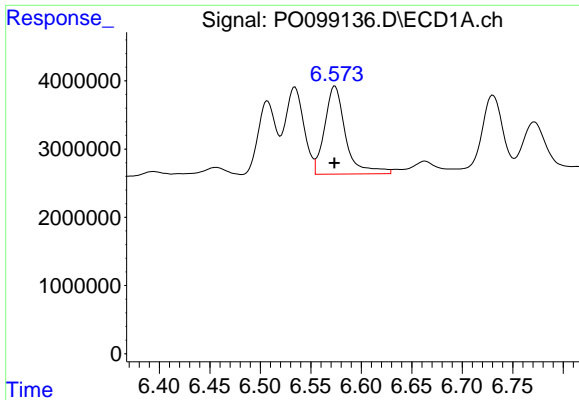
#24 AR-1248-4

R.T.: 6.534 min  
 Delta R.T.: 0.000 min  
 Response: 16502577  
 Conc: 302.62 ng/ml



#24 AR-1248-4

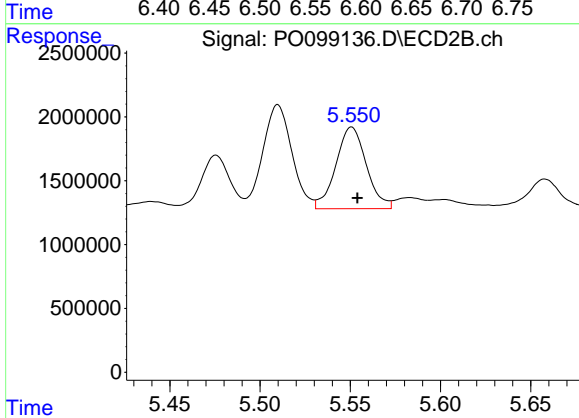
R.T.: 5.158 min  
 Delta R.T.: -0.003 min  
 Response: 8403629  
 Conc: 341.84 ng/ml



#25 AR-1248-5

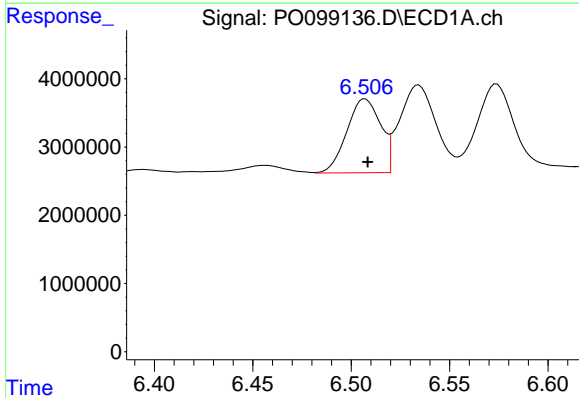
R.T.: 6.574 min  
 Delta R.T.: 0.000 min  
 Response: 18691671  
 Conc: 329.04 ng/ml

Instrument :  
 ECD\_O  
 ClientSampleId :



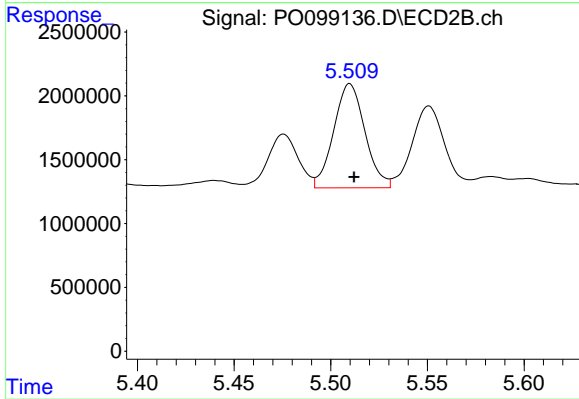
#25 AR-1248-5

R.T.: 5.551 min  
 Delta R.T.: -0.003 min  
 Response: 7520799  
 Conc: 346.29 ng/ml



#26 AR-1254-1

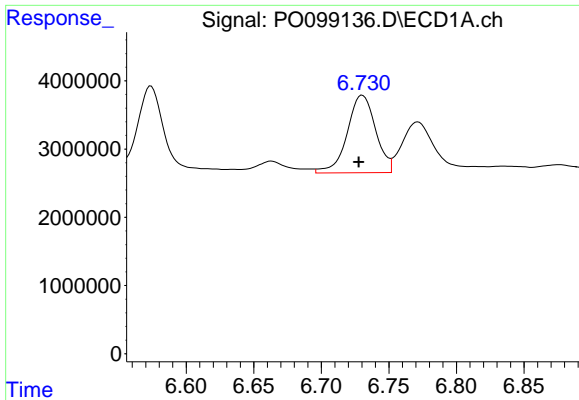
R.T.: 6.507 min  
 Delta R.T.: -0.001 min  
 Response: 12928602  
 Conc: 196.40 ng/ml



#26 AR-1254-1

R.T.: 5.510 min  
 Delta R.T.: -0.002 min  
 Response: 9175257  
 Conc: 258.94 ng/ml

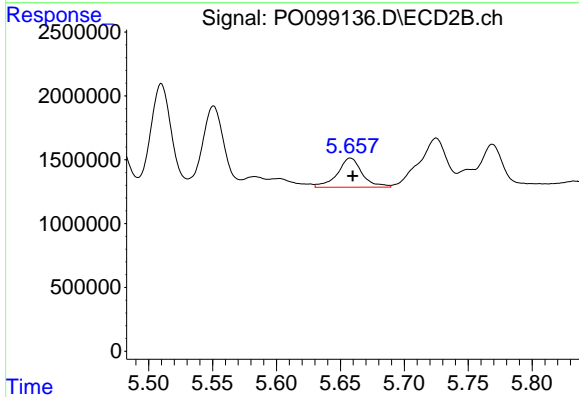




#27 AR-1254-2

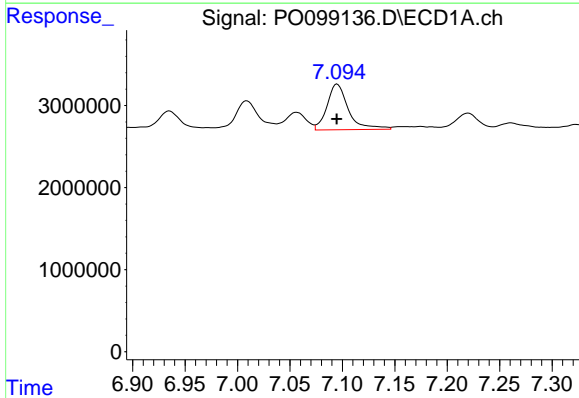
R.T.: 6.730 min  
 Delta R.T.: 0.003 min  
 Response: 16642415  
 Conc: 172.87 ng/ml

Instrument :  
 ECD\_O  
 ClientSampleId :



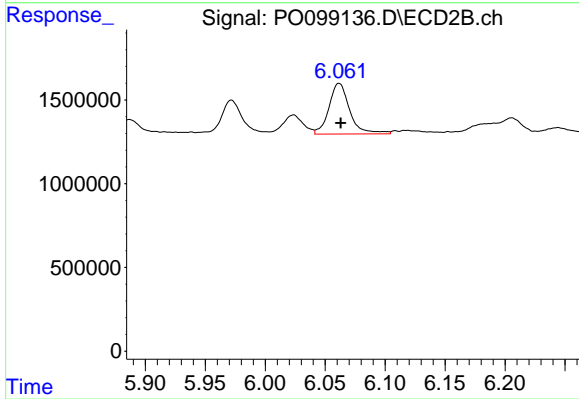
#27 AR-1254-2

R.T.: 5.658 min  
 Delta R.T.: -0.002 min  
 Response: 3083201  
 Conc: 96.40 ng/ml



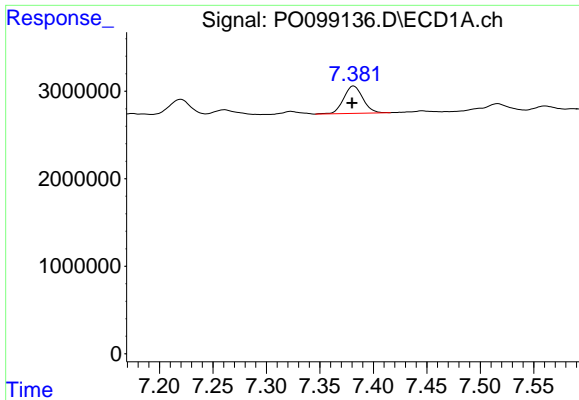
#28 AR-1254-3

R.T.: 7.095 min  
 Delta R.T.: 0.000 min  
 Response: 7864657  
 Conc: 87.99 ng/ml



#28 AR-1254-3

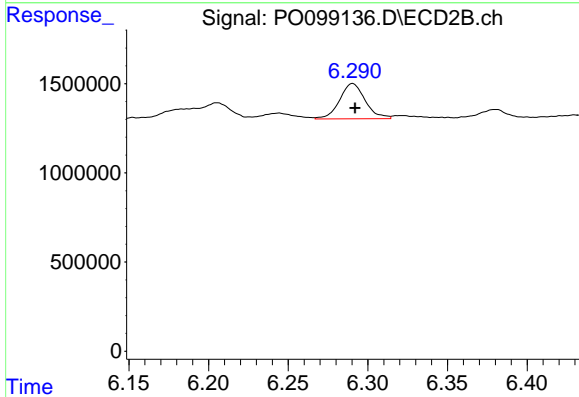
R.T.: 6.062 min  
 Delta R.T.: -0.001 min  
 Response: 3657502  
 Conc: 74.81 ng/ml



#29 AR-1254-4

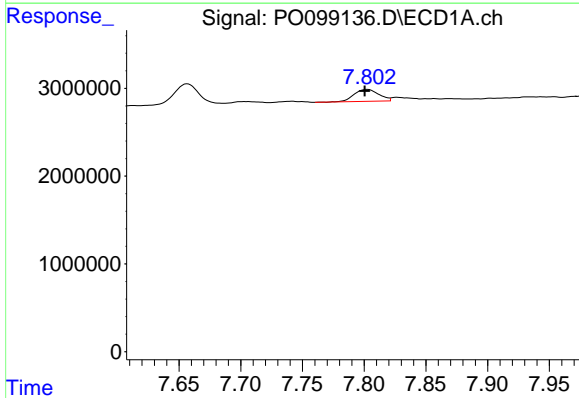
R.T.: 7.382 min  
 Delta R.T.: 0.001 min  
 Response: 3910221  
 Conc: 71.38 ng/ml

Instrument :  
 ECD\_O  
 ClientSampleId :



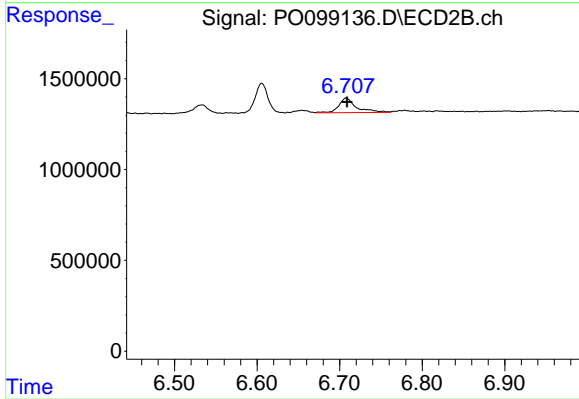
#29 AR-1254-4

R.T.: 6.290 min  
 Delta R.T.: -0.001 min  
 Response: 2214407  
 Conc: 84.50 ng/ml



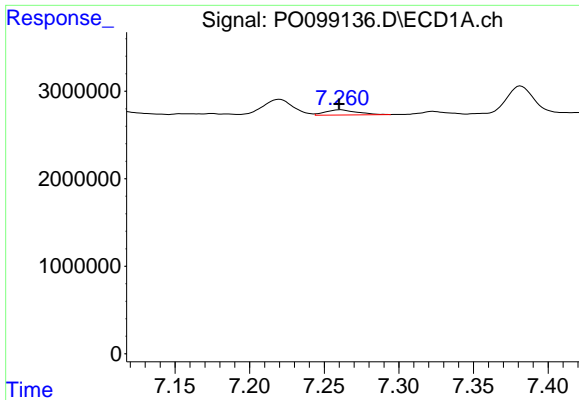
#30 AR-1254-5

R.T.: 7.803 min  
 Delta R.T.: 0.002 min  
 Response: 1900564  
 Conc: 28.23 ng/ml



#30 AR-1254-5

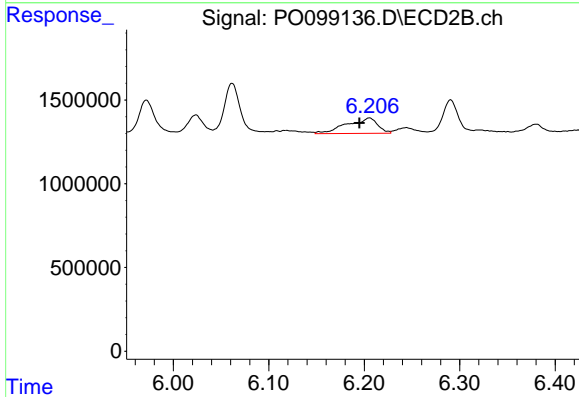
R.T.: 6.708 min  
 Delta R.T.: -0.001 min  
 Response: 1184517  
 Conc: 28.10 ng/ml



#31 AR-1260-1

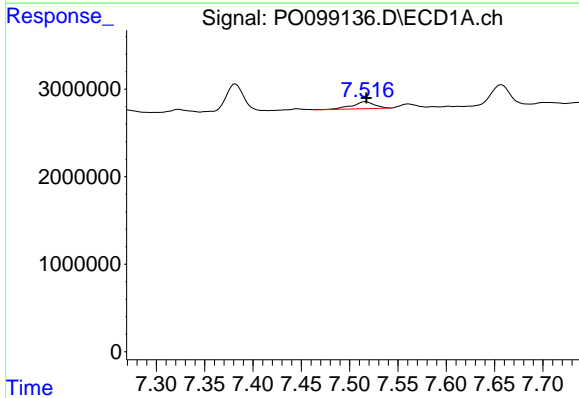
R.T.: 7.261 min  
 Delta R.T.: 0.000 min  
 Response: 861089  
 Conc: 12.02 ng/ml

Instrument :  
 ECD\_O  
 ClientSampleId :



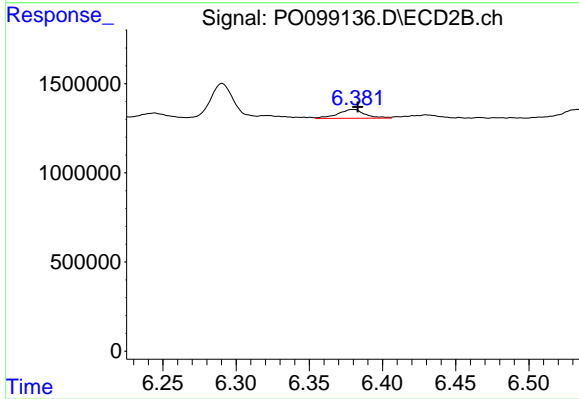
#31 AR-1260-1

R.T.: 6.205 min  
 Delta R.T.: 0.010 min  
 Response: 2065330  
 Conc: 58.55 ng/ml



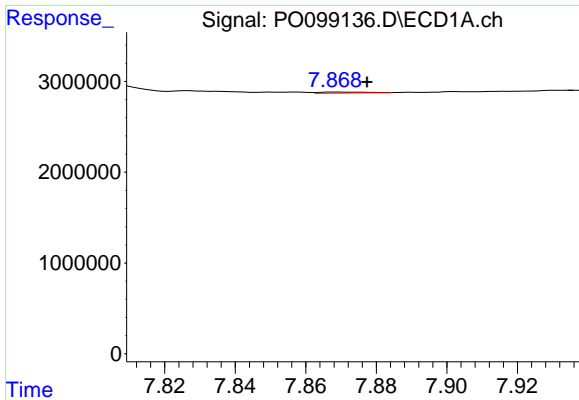
#32 AR-1260-2

R.T.: 7.516 min  
 Delta R.T.: 0.000 min  
 Response: 1285765  
 Conc: 16.30 ng/ml



#32 AR-1260-2

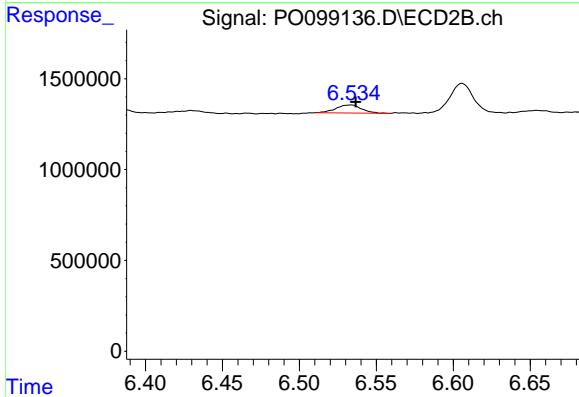
R.T.: 6.380 min  
 Delta R.T.: -0.003 min  
 Response: 639503  
 Conc: 15.95 ng/ml



#33 AR-1260-3

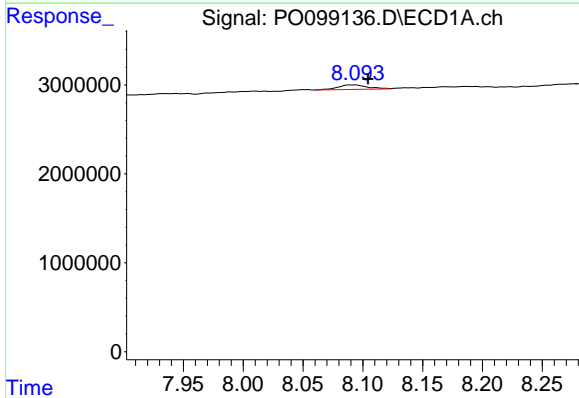
R.T.: 7.869 min  
 Delta R.T.: -0.009 min  
 Response: 109470  
 Conc: 2.00 ng/ml

Instrument :  
 ECD\_O  
 ClientSampleId :



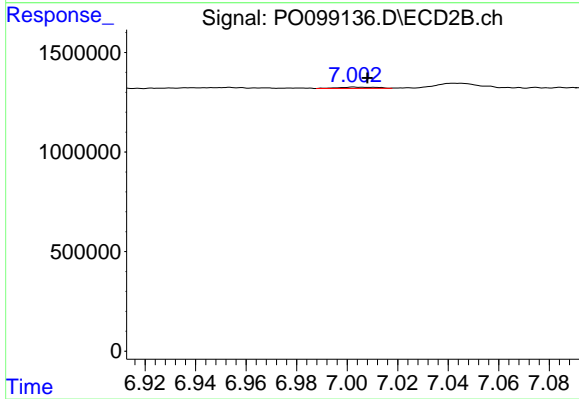
#33 AR-1260-3

R.T.: 6.533 min  
 Delta R.T.: -0.003 min  
 Response: 514816  
 Conc: 13.61 ng/ml



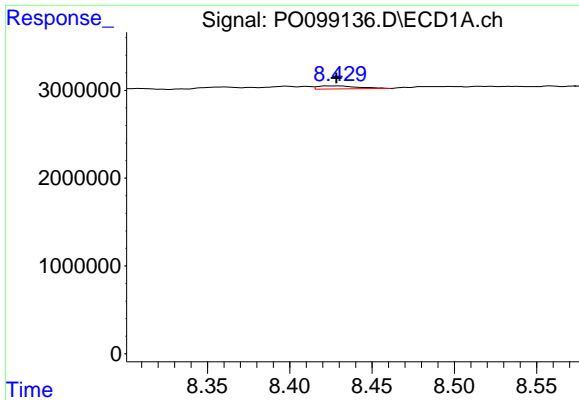
#34 AR-1260-4

R.T.: 8.094 min  
 Delta R.T.: -0.011 min  
 Response: 892686  
 Conc: 14.25 ng/ml



#34 AR-1260-4

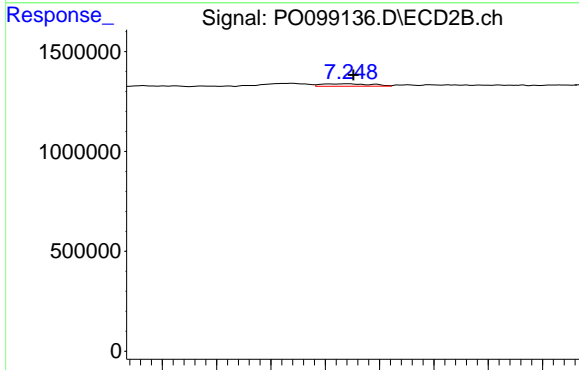
R.T.: 7.003 min  
 Delta R.T.: -0.005 min  
 Response: 73058  
 Conc: 2.53 ng/ml



#35 AR-1260-5

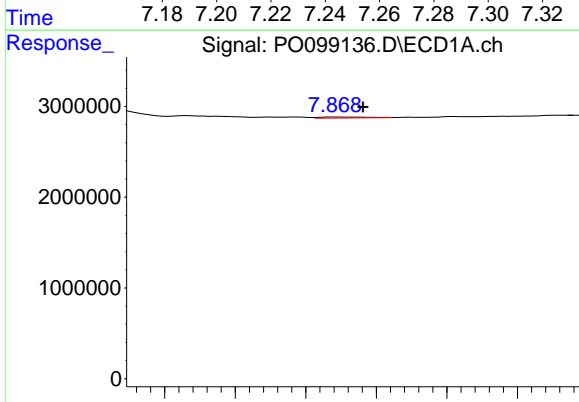
R.T.: 8.430 min  
 Delta R.T.: 0.001 min  
 Response: 593585  
 Conc: 5.55 ng/ml

Instrument :  
 ECD\_O  
 ClientSampleId :



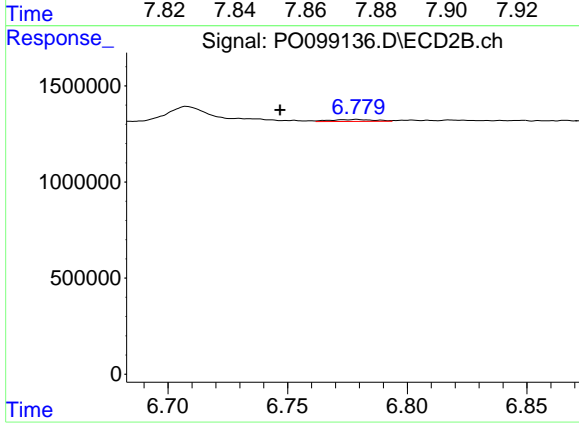
#35 AR-1260-5

R.T.: 7.248 min  
 Delta R.T.: -0.002 min  
 Response: 155905  
 Conc: 2.59 ng/ml



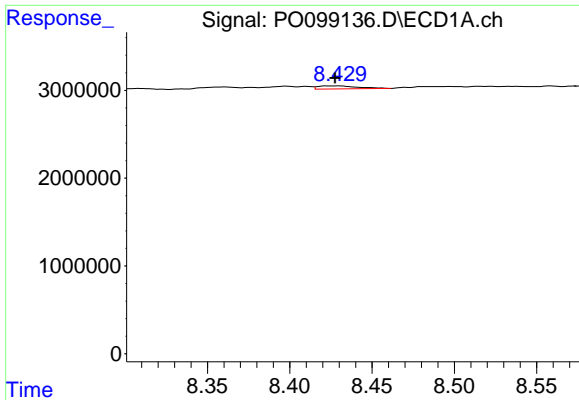
#36 AR-1262-1

R.T.: 7.869 min  
 Delta R.T.: -0.008 min  
 Response: 109470  
 Conc: 1.21 ng/ml



#36 AR-1262-1

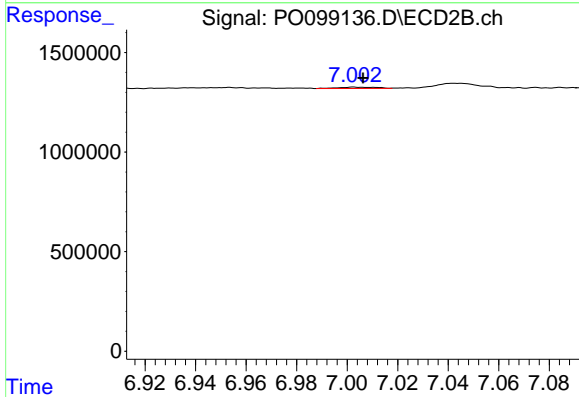
R.T.: 6.779 min  
 Delta R.T.: 0.032 min  
 Response: 129521  
 Conc: 2.76 ng/ml



#37 AR-1262-2

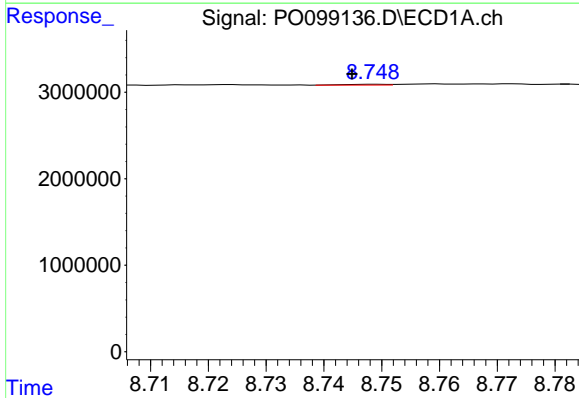
R.T.: 8.430 min  
 Delta R.T.: 0.002 min  
 Response: 593585  
 Conc: 4.45 ng/ml

Instrument :  
 ECD\_O  
 ClientSampleId :



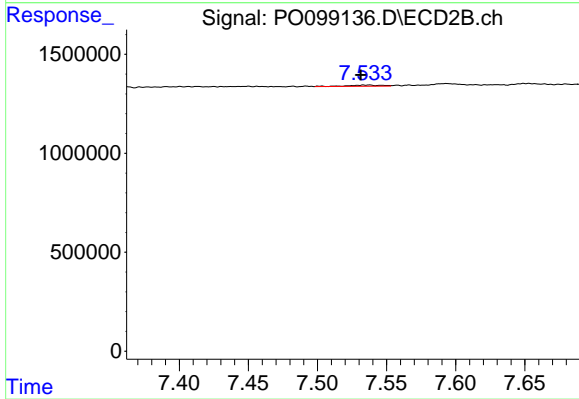
#37 AR-1262-2

R.T.: 7.003 min  
 Delta R.T.: -0.003 min  
 Response: 73058  
 Conc: 1.76 ng/ml



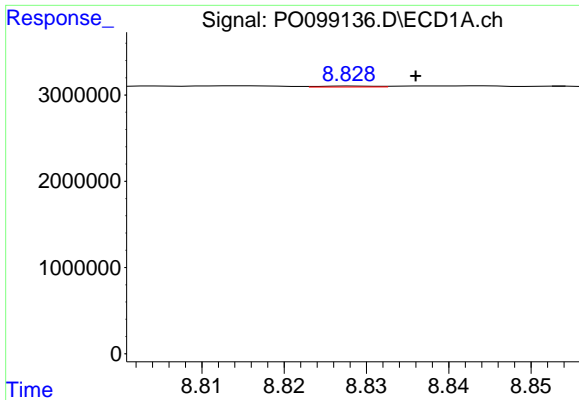
#38 AR-1262-3

R.T.: 8.749 min  
 Delta R.T.: 0.004 min  
 Response: 42915  
 Conc: 0.44 ng/ml



#38 AR-1262-3

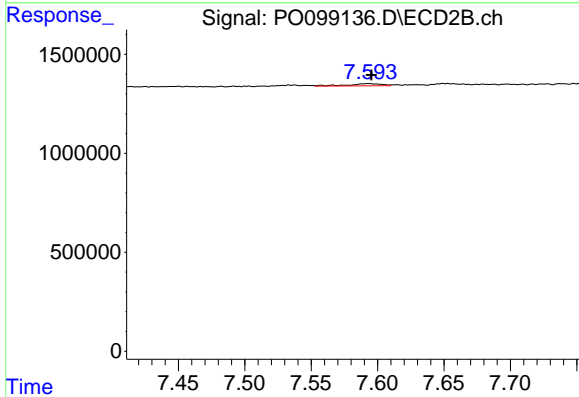
R.T.: 7.537 min  
 Delta R.T.: 0.006 min  
 Response: 108639  
 Conc: 3.40 ng/ml



#39 AR-1262-4

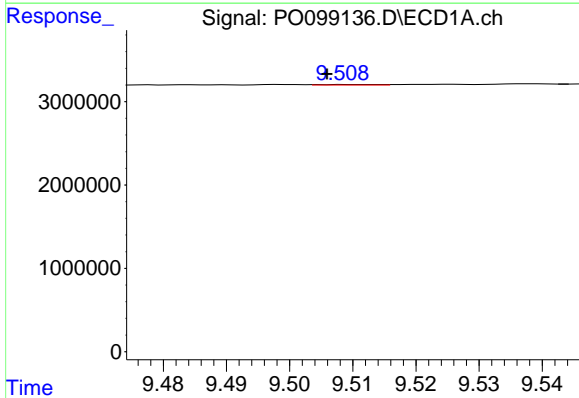
R.T.: 8.829 min  
 Delta R.T.: -0.007 min  
 Response: 51455  
 Conc: 0.64 ng/ml

Instrument :  
 ECD\_O  
 ClientSampleId :



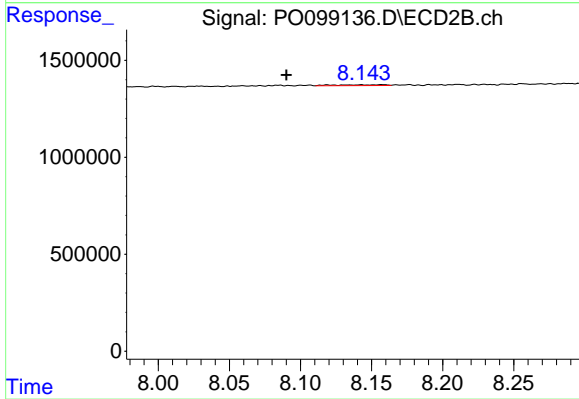
#39 AR-1262-4

R.T.: 7.593 min  
 Delta R.T.: -0.002 min  
 Response: 190814  
 Conc: 3.47 ng/ml



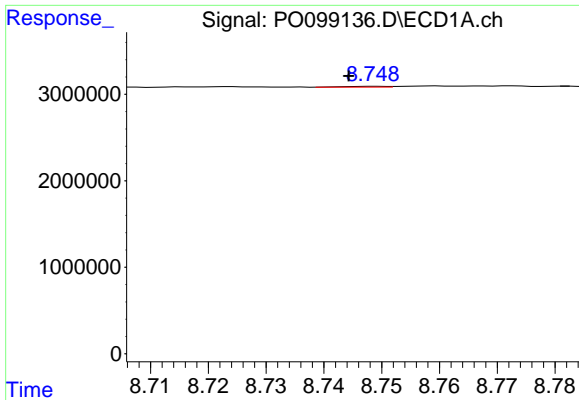
#40 AR-1262-5

R.T.: 9.510 min  
 Delta R.T.: 0.004 min  
 Response: 45737  
 Conc: 1.04 ng/ml



#40 AR-1262-5

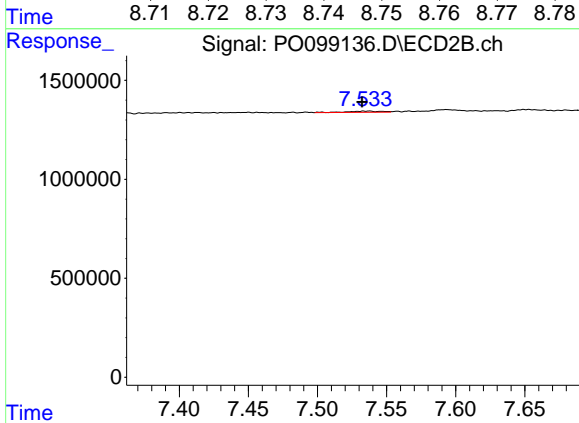
R.T.: 8.143 min  
 Delta R.T.: 0.053 min  
 Response: 101485  
 Conc: 4.04 ng/ml



#41 AR-1268-1

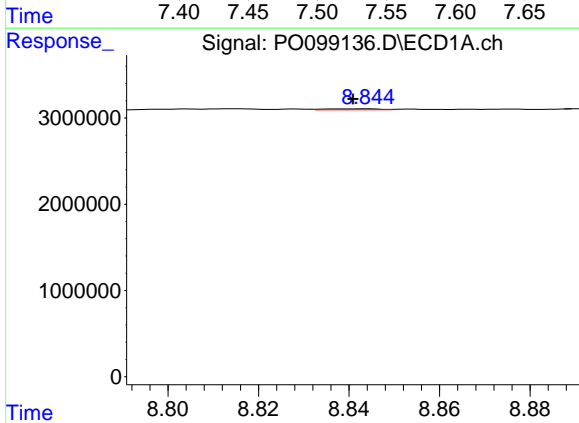
R.T.: 8.749 min  
 Delta R.T.: 0.004 min  
 Response: 42915  
 Conc: 0.25 ng/ml

Instrument :  
 ECD\_O  
 ClientSampleId :



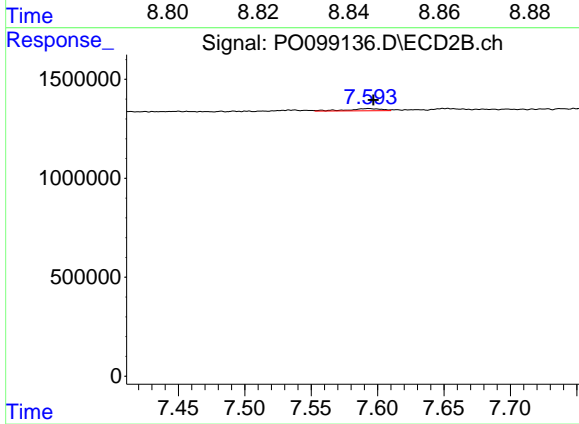
#41 AR-1268-1

R.T.: 7.537 min  
 Delta R.T.: 0.005 min  
 Response: 108639  
 Conc: 1.22 ng/ml



#42 AR-1268-2

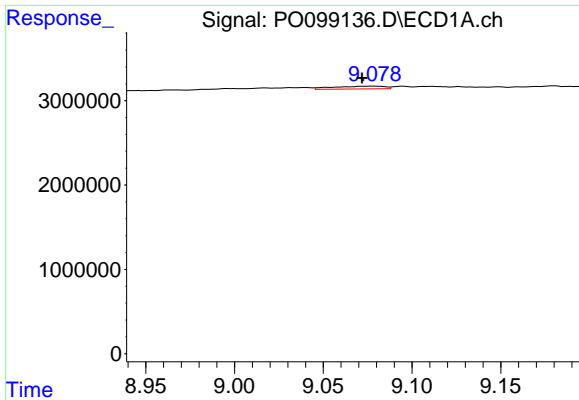
R.T.: 8.844 min  
 Delta R.T.: 0.003 min  
 Response: 97500  
 Conc: 0.62 ng/ml



#42 AR-1268-2

R.T.: 7.593 min  
 Delta R.T.: -0.004 min  
 Response: 190814  
 Conc: 2.42 ng/ml

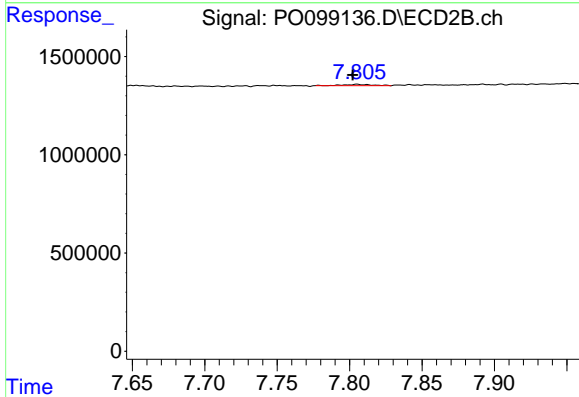




#43 AR-1268-3

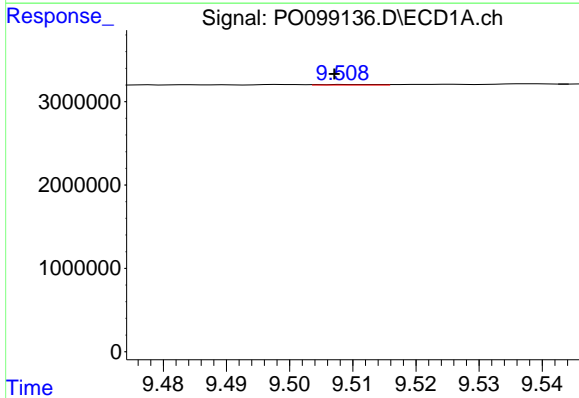
R.T.: 9.079 min  
 Delta R.T.: 0.007 min  
 Response: 659546  
 Conc: 4.70 ng/ml

Instrument :  
 ECD\_O  
 ClientSampleId :



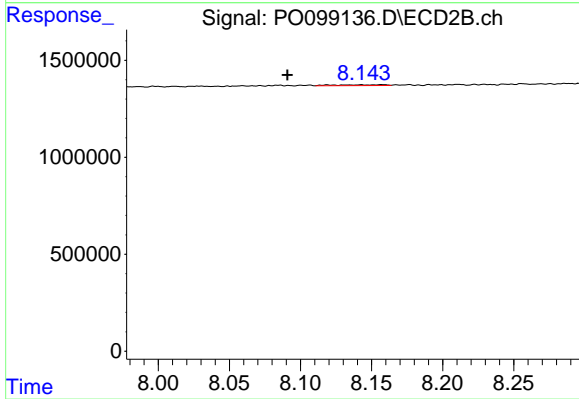
#43 AR-1268-3

R.T.: 7.805 min  
 Delta R.T.: 0.003 min  
 Response: 86795  
 Conc: 1.23 ng/ml



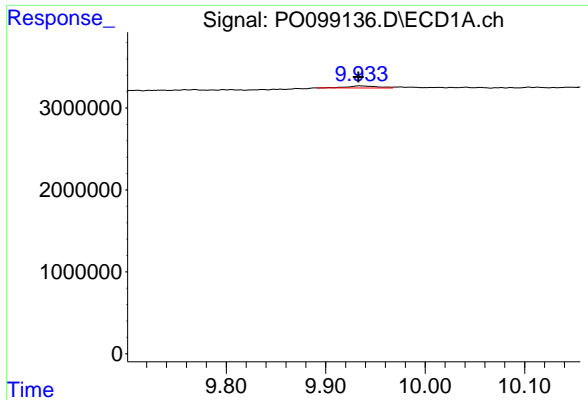
#44 AR-1268-4

R.T.: 9.510 min  
 Delta R.T.: 0.003 min  
 Response: 45737  
 Conc: 0.91 ng/ml



#44 AR-1268-4

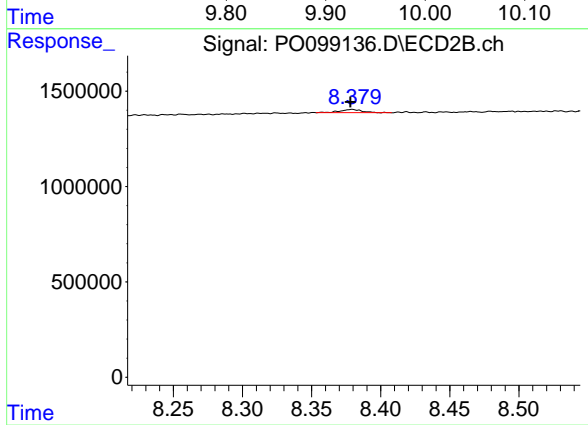
R.T.: 8.143 min  
 Delta R.T.: 0.052 min  
 Response: 101485  
 Conc: 3.68 ng/ml



#45 AR-1268-5

R.T.: 9.934 min  
Delta R.T.: 0.001 min  
Response: 538467  
Conc: 1.32 ng/ml

Instrument :  
ECD\_O  
ClientSampleId :



#45 AR-1268-5

R.T.: 8.379 min  
Delta R.T.: 0.001 min  
Response: 184670  
Conc: 0.97 ng/ml