

Data Path : Z:\pestpcbsrv\HPCHEM1\ECD\_0\Data\PO103023\  
 Data File : PO099169.D  
 Signal(s) : Signal #1: ECD1A.ch Signal #2: ECD2B.ch  
 Acq On : 31 Oct 2023 04:52  
 Operator : YP/AJ  
 Sample : I.BLK  
 Misc :  
 ALS Vial : 2 Sample Multiplier: 1

Instrument :  
 ECD\_0  
 ClientSampleId :

Integration File signal 1: autoint1.e  
 Integration File signal 2: autoint2.e  
 Quant Time: Oct 31 05:35:52 2023  
 Quant Method : Z:\pestpcbsrv\HPCHEM1\ECD\_0\methods\PO102523.M  
 Quant Title : GC EXTRACTABLES  
 QLast Update : Wed Oct 25 06:04:36 2023  
 Response via : Initial Calibration  
 Integrator: ChemStation

Volume Inj. : 2 µl  
 Signal #1 Phase : ZB-MR1 Signal #2 Phase: ZB-MR2  
 Signal #1 Info : 30Mx0.32mmx 0.50µ Signal #2 Info : 30M x 0.32mm x 0.25µm

Compound	RT#1	RT#2	Resp#1	Resp#2	ng/ml	ng/ml
System Monitoring Compounds						
1) SA Tetrachlo...	4.471	3.642	39890076	14805703	20.188	20.573
2) SA Decachlor...	10.271	8.638	25838012	11649055	22.808	21.712
Target Compounds						
3) L1 AR-1016-1	5.653	4.723	38340	88465	0.696	3.950 #
4) L1 AR-1016-2	5.682	4.723	88121	88465	1.066	2.830 #
5) L1 AR-1016-3	5.732	4.916	11239	148372	0.218	8.762 #
6) L1 AR-1016-4	5.849	4.926	25938	445342	0.638	30.803 #
7) L1 AR-1016-5	6.115	5.119f	80212	306716	1.890	16.418 #
8) L2 AR-1221-1	4.668	3.848	96049	33665	3.869	3.624
9) L2 AR-1221-2	4.780	3.944	1142511	226973	61.760	35.007 #
10) L2 AR-1221-3	4.849	4.016	51006	32505	0.941	1.607 #
11) L3 AR-1232-1	4.849	4.016	51006	32505	1.115	1.896 #
12) L3 AR-1232-2	5.387	4.723	20778	88465	0.880	5.774 #
13) L3 AR-1232-3	5.682	4.897	88121	93231	2.231	11.652 #
14) L3 AR-1232-4	5.849	4.992	25938	576314	1.360	74.906 #
15) L3 AR-1232-5	5.920	5.119f	33115	306716	1.988	36.061 #
16) L4 AR-1242-1	5.653	4.703	38340	8520	0.886	0.485 #
17) L4 AR-1242-2	5.682	4.723	88121	88465	1.376	3.650 #
18) L4 AR-1242-3	5.732	4.897	11239	93231	0.279	7.272 #
19) L4 AR-1242-4	5.849	4.992	25938	576314	0.829	40.941 #
20) L4 AR-1242-5	6.574	5.508	1882702	772412	61.030	46.221
21) L5 AR-1248-1	5.653	4.703	38340	8520	1.129	0.615 #
22) L5 AR-1248-2	5.929	4.926	24364	445342	0.466	22.420 #
23) L5 AR-1248-3	6.115	4.992	80212	576314	1.408	27.636 #
24) L5 AR-1248-4	6.541	5.119f	2609138	306716	47.846	12.476 #
25) L5 AR-1248-5	6.574	5.548	1882702	3322080	33.143	152.962 #
26) L6 AR-1254-1	6.505	5.508	5675242	772412	86.215	21.799 #
27) L6 AR-1254-2	6.710	5.636	2268653	1328488	23.566	41.535 #
28) L6 AR-1254-3	7.095	6.058	2007047	865781	22.454	17.710
29) L6 AR-1254-4	7.390	6.296	-243232	449237	N.D.	17.142 #
30) L6 AR-1254-5	7.780	6.723	37004	91276	0.550	2.165 #
31) L7 AR-1260-1	7.259	6.204	135378	1219284	1.889	34.565 #
32) L7 AR-1260-2	7.518	6.378	68460	675790	0.868	16.858 #
33) L7 AR-1260-3	7.843	6.530	126681	60307	2.320	1.595 #
34) L7 AR-1260-4	8.104	7.009	59623	7586	0.952	0.263 #
35) L7 AR-1260-5	8.433	7.241	128368	81056	1.200	1.347
36) L8 AR-1262-1	7.843	6.723	126681	91276	1.400	1.945 #
37) L8 AR-1262-2	8.433	7.009	128368	7586	0.963	0.183 #
38) L8 AR-1262-3	8.748	7.512	54889	31273	0.558	0.979 #
39) L8 AR-1262-4	8.832	7.567	85319	347143	1.065	6.314 #
40) L8 AR-1262-5	9.508	8.138f	16347	88710	0.372	3.532 #
41) L9 AR-1268-1	8.748	7.512	54889	31273	0.319	0.351

Data Path : Z:\pestpcbsrv\HPCHEM1\ECD\_0\Data\PO103023\  
 Data File : PO099169.D  
 Signal(s) : Signal #1: ECD1A.ch Signal #2: ECD2B.ch  
 Acq On : 31 Oct 2023 04:52  
 Operator : YP/AJ  
 Sample : I.BLK  
 Misc :  
 ALS Vial : 2 Sample Multiplier: 1

Instrument :  
 ECD\_0  
 ClientSampleId :

Integration File signal 1: autoint1.e  
 Integration File signal 2: autoint2.e  
 Quant Time: Oct 31 05:35:52 2023  
 Quant Method : Z:\pestpcbsrv\HPCHEM1\ECD\_0\methods\PO102523.M  
 Quant Title : GC EXTRACTABLES  
 QLast Update : Wed Oct 25 06:04:36 2023  
 Response via : Initial Calibration  
 Integrator: ChemStation

Volume Inj. : 2 µl  
 Signal #1 Phase : ZB-MR1 Signal #2 Phase: ZB-MR2  
 Signal #1 Info : 30Mx0.32mmx 0.50µ Signal #2 Info : 30M x 0.32mm x 0.25µm

	Compound	RT#1	RT#2	Resp#1	Resp#2	ng/ml	ng/ml
42)	L9 AR-1268-2	8.845	7.567	34608	347143	0.221	4.397 #
43)	L9 AR-1268-3	9.061	7.816	66473	72514	0.474	1.030 #
44)	L9 AR-1268-4	9.508	8.138f	16347	88710	0.326	3.219 #
45)	L9 AR-1268-5	9.938	8.388	40490	113540	0.099	0.596 #

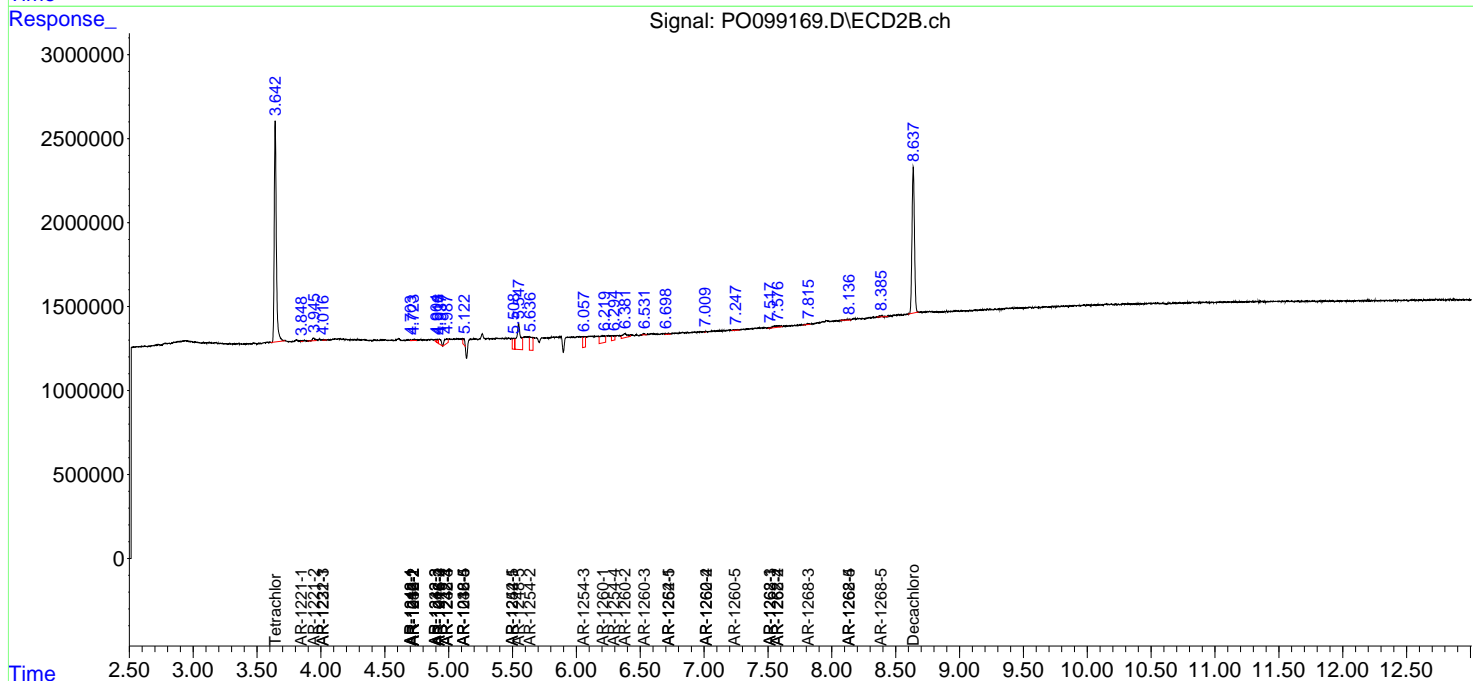
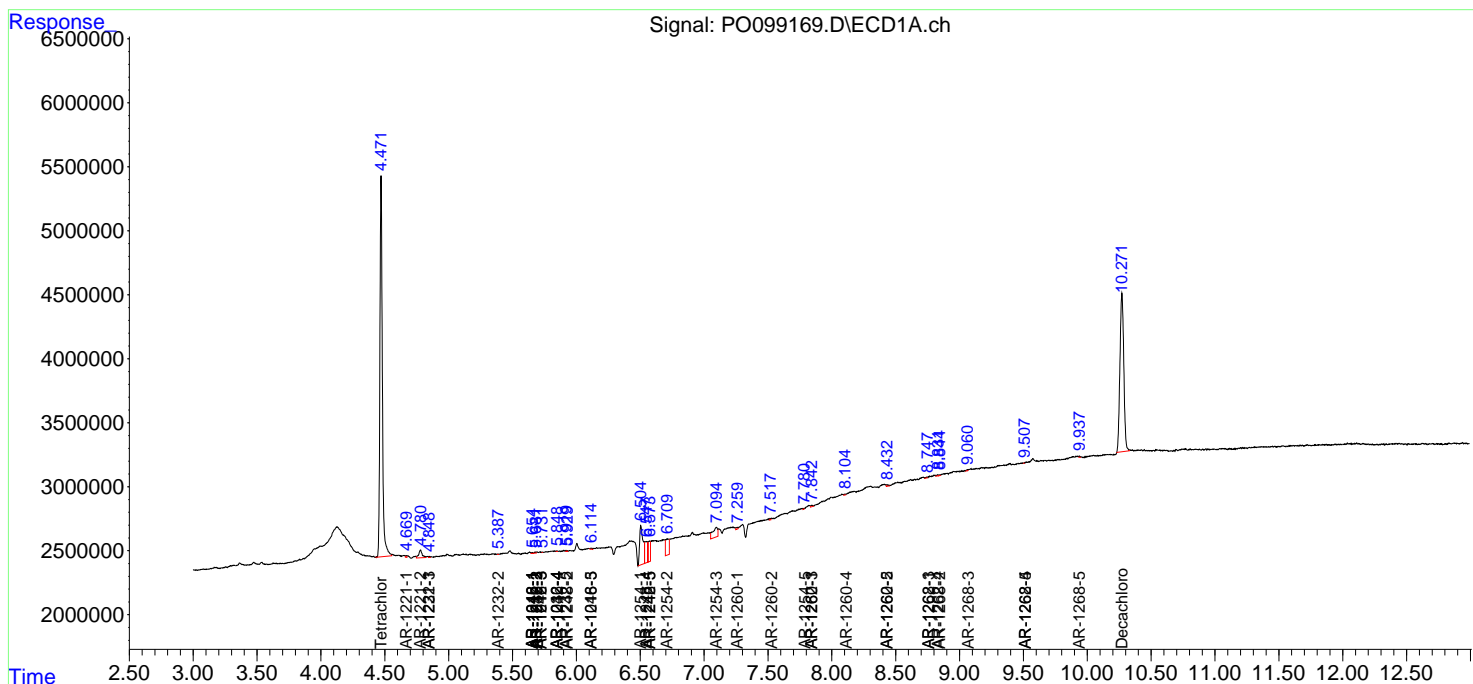
(f)=RT Delta > 1/2 Window (#)=Amounts differ by > 25% (m)=manual int.

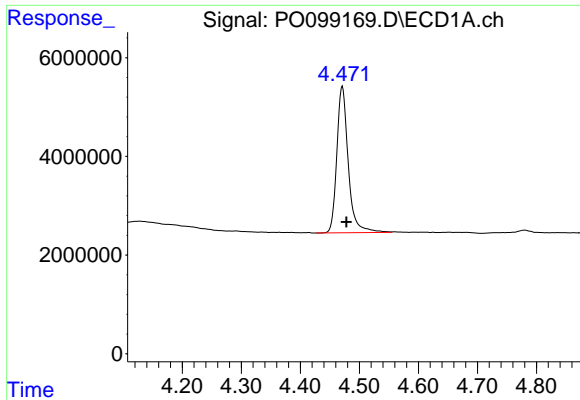
Data Path : Z:\pestpcbsrv\HPCHEM1\ECD\_O\Data\PO103023\  
 Data File : PO099169.D  
 Signal(s) : Signal #1: ECD1A.ch Signal #2: ECD2B.ch  
 Acq On : 31 Oct 2023 04:52  
 Operator : YP/AJ  
 Sample : I.BLK  
 Misc :  
 ALS Vial : 2 Sample Multiplier: 1

Instrument :  
 ECD\_O  
 ClientSampleId :

Integration File signal 1: autoint1.e  
 Integration File signal 2: autoint2.e  
 Quant Time: Oct 31 05:35:52 2023  
 Quant Method : Z:\pestpcbsrv\HPCHEM1\ECD\_O\methods\PO102523.M  
 Quant Title : GC EXTRACTABLES  
 QLast Update : Wed Oct 25 06:04:36 2023  
 Response via : Initial Calibration  
 Integrator: ChemStation

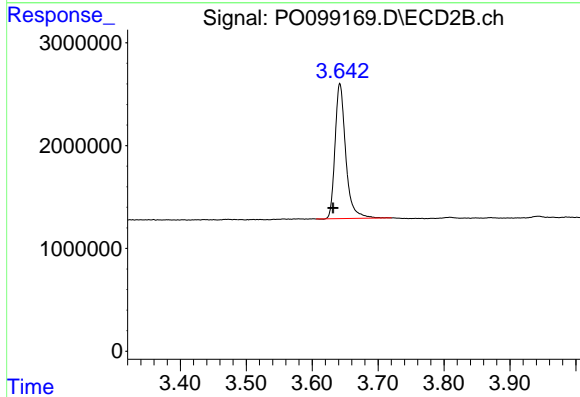
Volume Inj. : 2 µl  
 Signal #1 Phase : ZB-MR1 Signal #2 Phase: ZB-MR2  
 Signal #1 Info : 30Mx0.32mmx 0.50µ Signal #2 Info : 30M x 0.32mm x 0.25µm



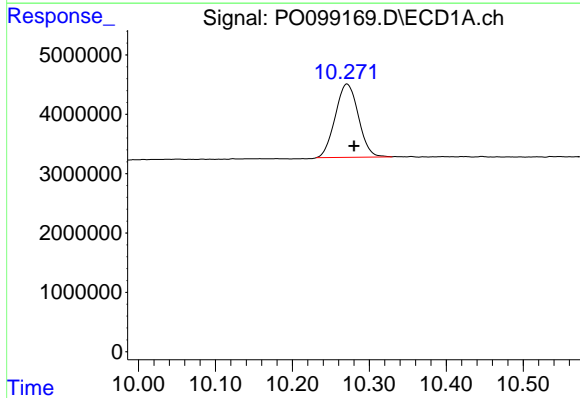


#1 Tetrachloro-m-xylene  
 R.T.: 4.471 min  
 Delta R.T.: -0.007 min  
 Response: 39890076  
 Conc: 20.19 ng/ml

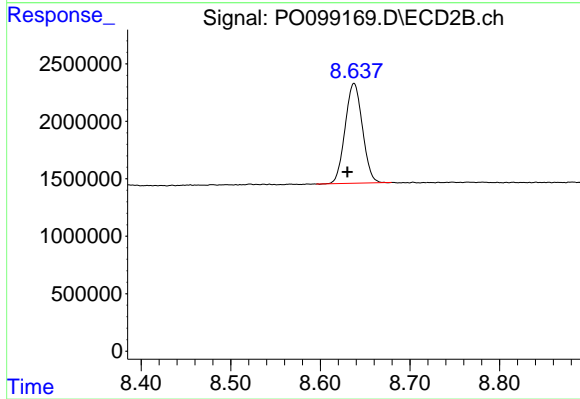
Instrument :  
 ECD\_O  
 ClientSampleId :



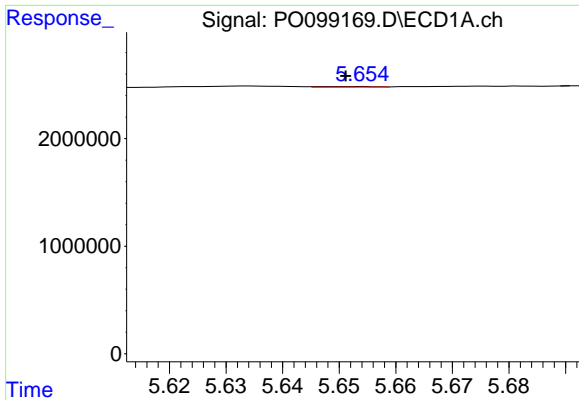
#1 Tetrachloro-m-xylene  
 R.T.: 3.642 min  
 Delta R.T.: 0.010 min  
 Response: 14805703  
 Conc: 20.57 ng/ml



#2 Decachlorobiphenyl  
 R.T.: 10.271 min  
 Delta R.T.: -0.009 min  
 Response: 25838012  
 Conc: 22.81 ng/ml



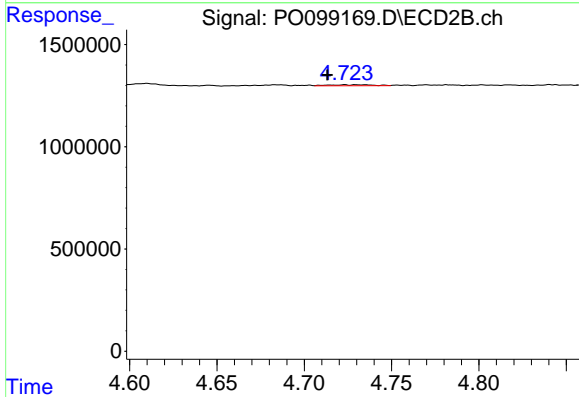
#2 Decachlorobiphenyl  
 R.T.: 8.638 min  
 Delta R.T.: 0.007 min  
 Response: 11649055  
 Conc: 21.71 ng/ml



#3 AR-1016-1

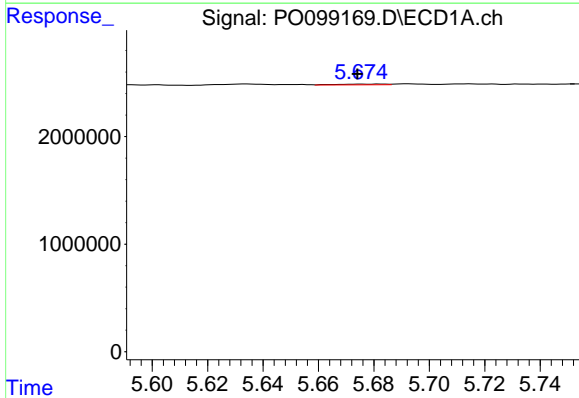
R.T.: 5.653 min  
 Delta R.T.: 0.002 min  
 Response: 38340  
 Conc: 0.70 ng/ml

Instrument :  
 ECD\_O  
 ClientSampleId :



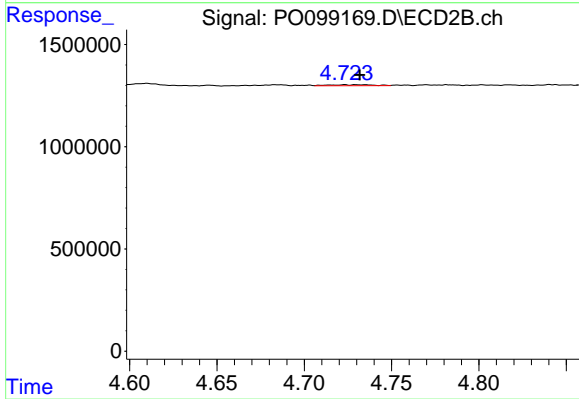
#3 AR-1016-1

R.T.: 4.723 min  
 Delta R.T.: 0.010 min  
 Response: 88465  
 Conc: 3.95 ng/ml



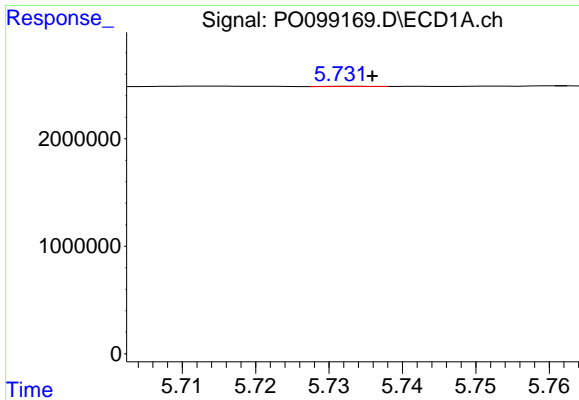
#4 AR-1016-2

R.T.: 5.682 min  
 Delta R.T.: 0.008 min  
 Response: 88121  
 Conc: 1.07 ng/ml



#4 AR-1016-2

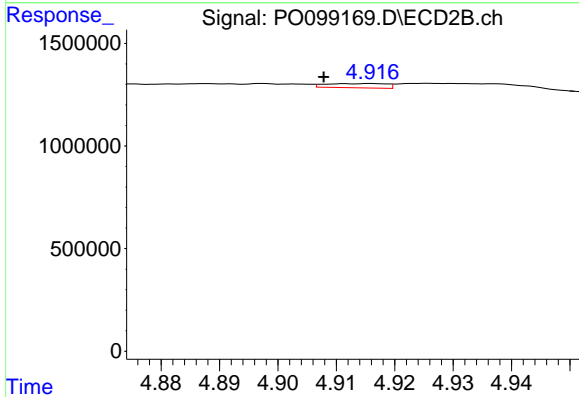
R.T.: 4.723 min  
 Delta R.T.: -0.008 min  
 Response: 88465  
 Conc: 2.83 ng/ml



#5 AR-1016-3

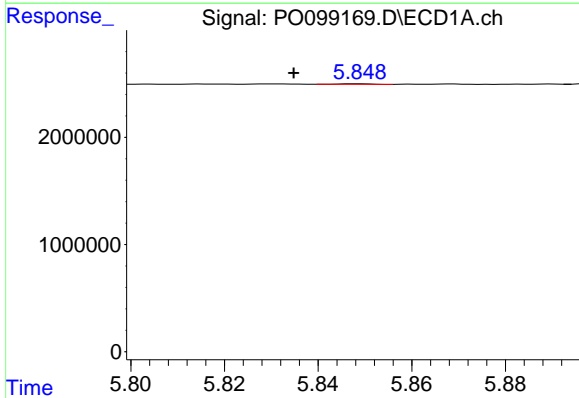
R.T.: 5.732 min  
 Delta R.T.: -0.003 min  
 Response: 11239  
 Conc: 0.22 ng/ml

Instrument :  
 ECD\_O  
 ClientSampleId :



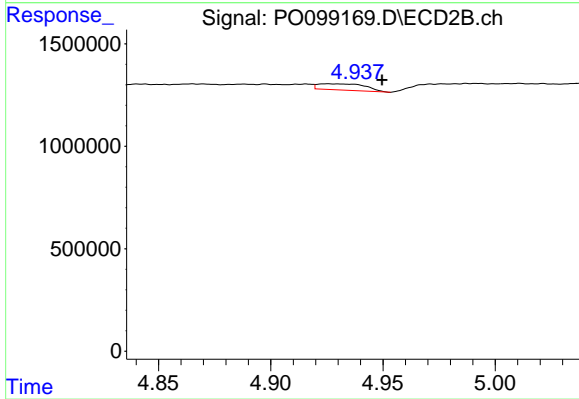
#5 AR-1016-3

R.T.: 4.916 min  
 Delta R.T.: 0.008 min  
 Response: 148372  
 Conc: 8.76 ng/ml



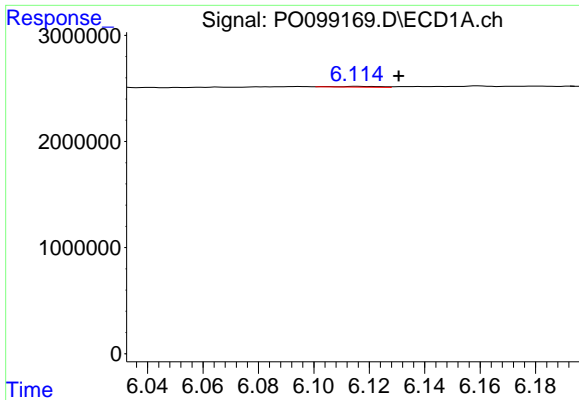
#6 AR-1016-4

R.T.: 5.849 min  
 Delta R.T.: 0.014 min  
 Response: 25938  
 Conc: 0.64 ng/ml



#6 AR-1016-4

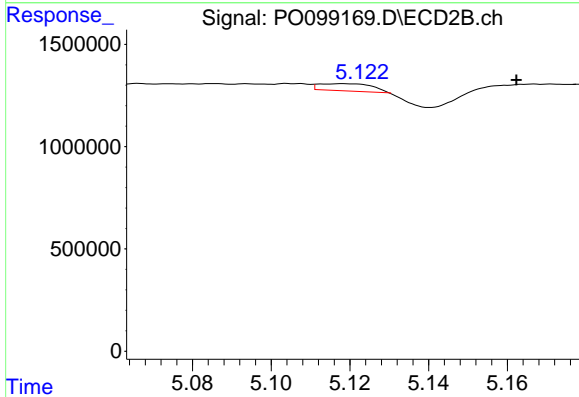
R.T.: 4.926 min  
 Delta R.T.: -0.024 min  
 Response: 445342  
 Conc: 30.80 ng/ml



#7 AR-1016-5

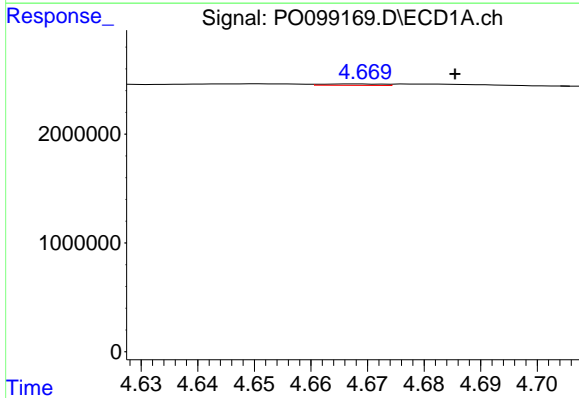
R.T.: 6.115 min  
 Delta R.T.: -0.015 min  
 Response: 80212  
 Conc: 1.89 ng/ml

Instrument :  
 ECD\_O  
 ClientSampleId :



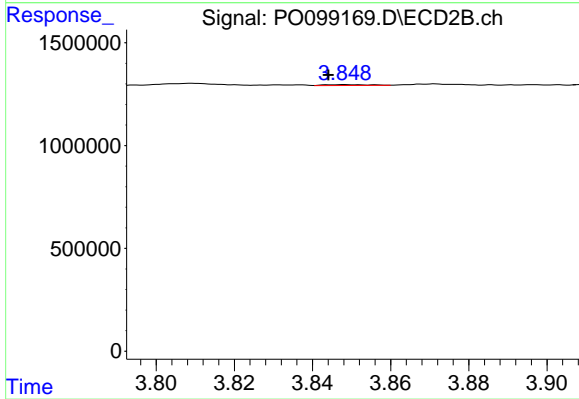
#7 AR-1016-5

R.T.: 5.119 min  
 Delta R.T.: -0.044 min  
 Response: 306716  
 Conc: 16.42 ng/ml



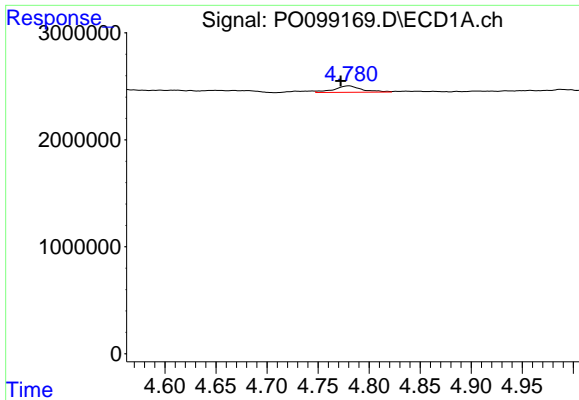
#8 AR-1221-1

R.T.: 4.668 min  
 Delta R.T.: -0.018 min  
 Response: 96049  
 Conc: 3.87 ng/ml



#8 AR-1221-1

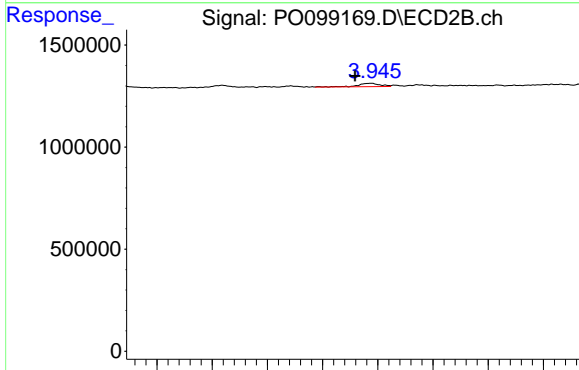
R.T.: 3.848 min  
 Delta R.T.: 0.004 min  
 Response: 33665  
 Conc: 3.62 ng/ml



#9 AR-1221-2

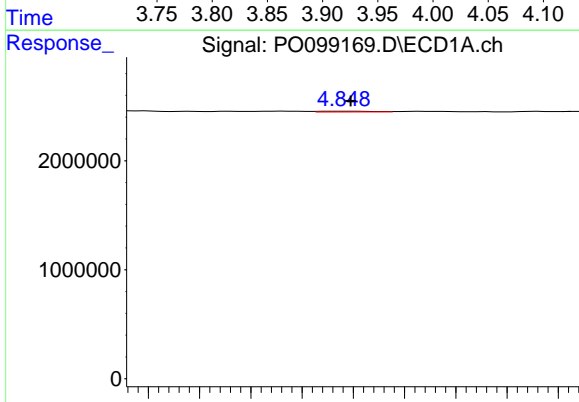
R.T.: 4.780 min  
 Delta R.T.: 0.008 min  
 Response: 1142511  
 Conc: 61.76 ng/ml

Instrument :  
 ECD\_O  
 ClientSampleId :



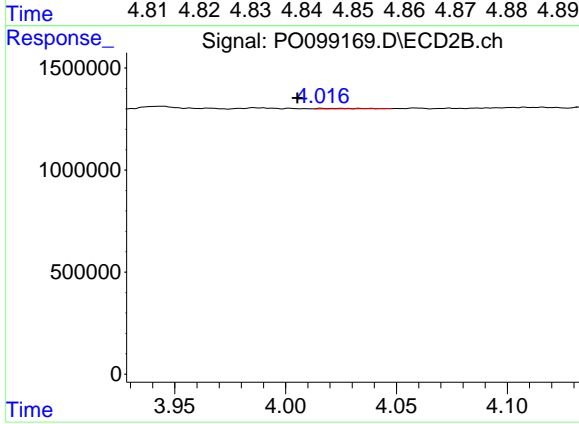
#9 AR-1221-2

R.T.: 3.944 min  
 Delta R.T.: 0.014 min  
 Response: 226973  
 Conc: 35.01 ng/ml



#10 AR-1221-3

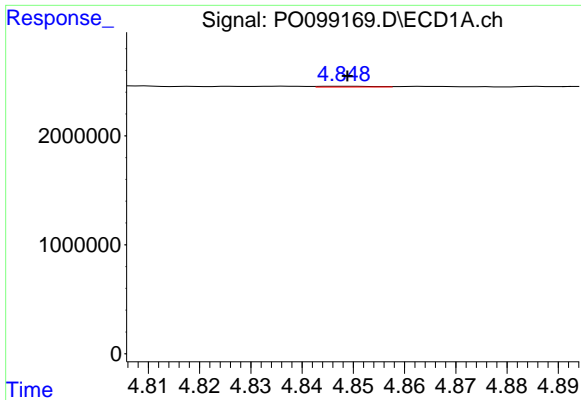
R.T.: 4.849 min  
 Delta R.T.: 0.000 min  
 Response: 51006  
 Conc: 0.94 ng/ml



#10 AR-1221-3

R.T.: 4.016 min  
 Delta R.T.: 0.011 min  
 Response: 32505  
 Conc: 1.61 ng/ml

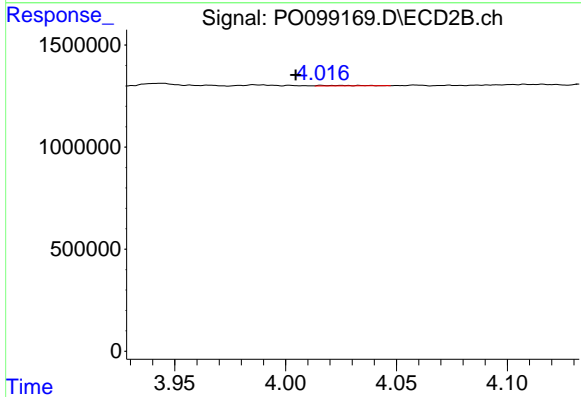




#11 AR-1232-1

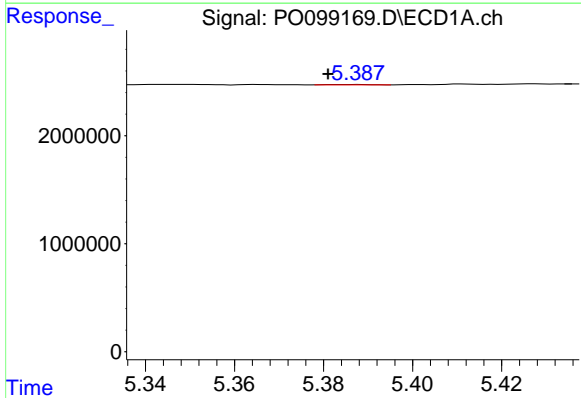
R.T.: 4.849 min  
 Delta R.T.: 0.000 min  
 Response: 51006  
 Conc: 1.11 ng/ml

Instrument :  
 ECD\_O  
 ClientSampleId :



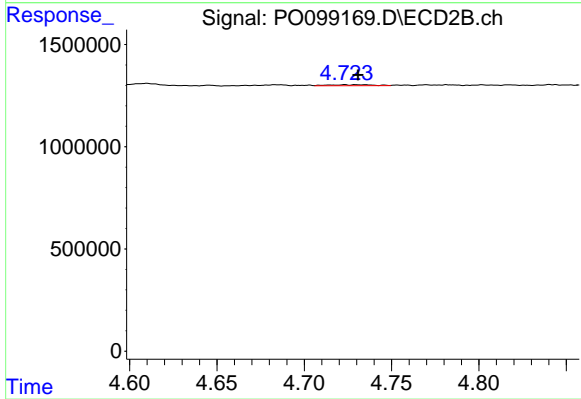
#11 AR-1232-1

R.T.: 4.016 min  
 Delta R.T.: 0.012 min  
 Response: 32505  
 Conc: 1.90 ng/ml



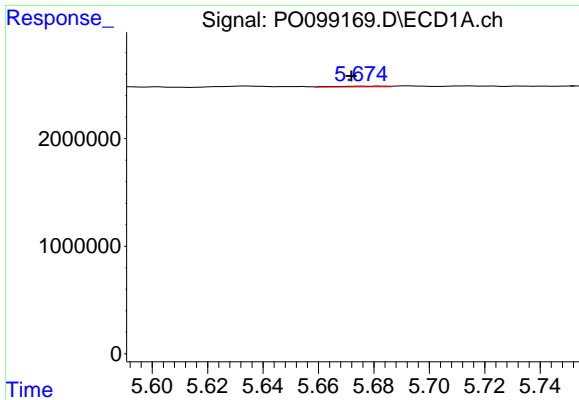
#12 AR-1232-2

R.T.: 5.387 min  
 Delta R.T.: 0.006 min  
 Response: 20778  
 Conc: 0.88 ng/ml



#12 AR-1232-2

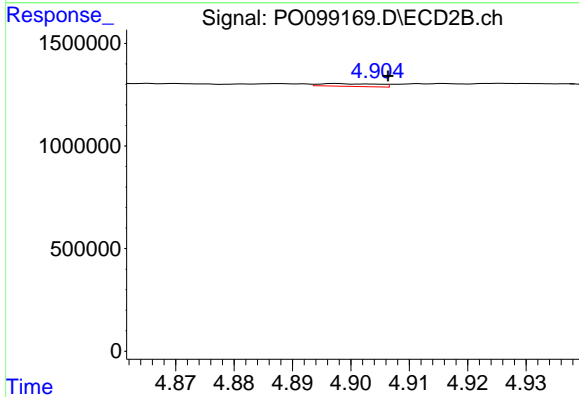
R.T.: 4.723 min  
 Delta R.T.: -0.007 min  
 Response: 88465  
 Conc: 5.77 ng/ml



#13 AR-1232-3

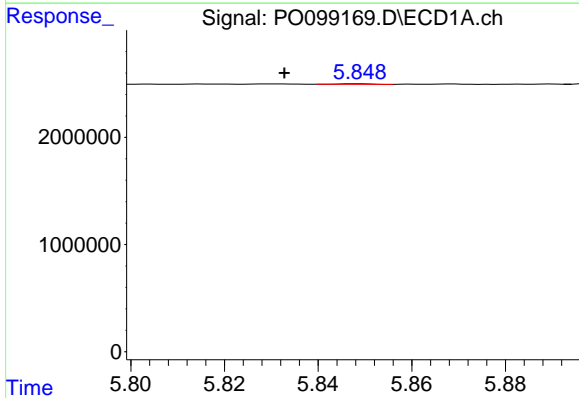
R.T.: 5.682 min  
 Delta R.T.: 0.010 min  
 Response: 88121  
 Conc: 2.23 ng/ml

Instrument :  
 ECD\_O  
 ClientSampleId :



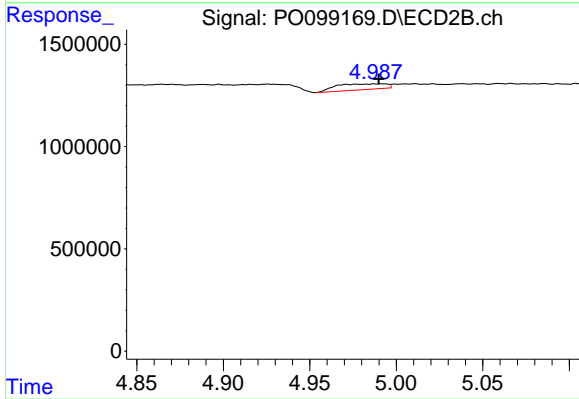
#13 AR-1232-3

R.T.: 4.897 min  
 Delta R.T.: -0.009 min  
 Response: 93231  
 Conc: 11.65 ng/ml



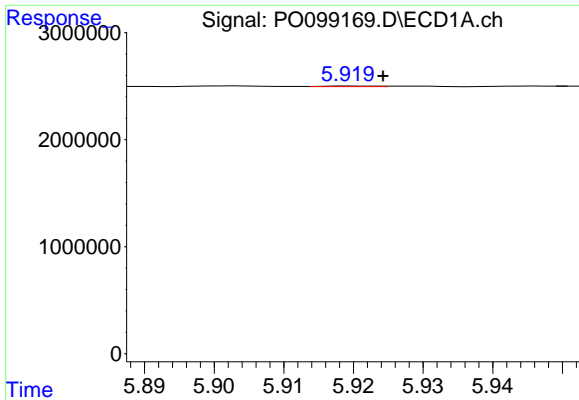
#14 AR-1232-4

R.T.: 5.849 min  
 Delta R.T.: 0.016 min  
 Response: 25938  
 Conc: 1.36 ng/ml



#14 AR-1232-4

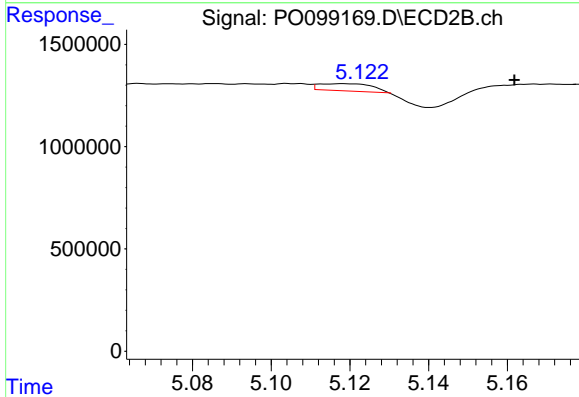
R.T.: 4.992 min  
 Delta R.T.: 0.002 min  
 Response: 576314  
 Conc: 74.91 ng/ml



#15 AR-1232-5

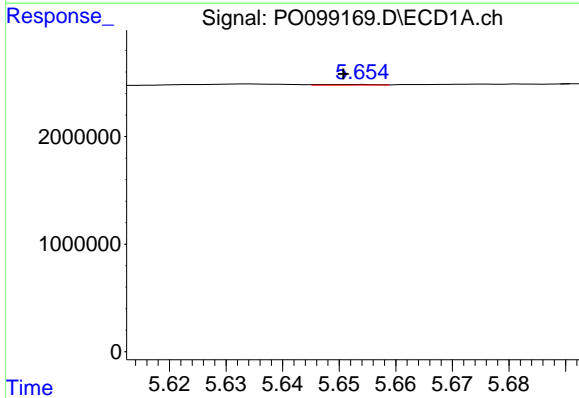
R.T.: 5.920 min  
 Delta R.T.: -0.005 min  
 Response: 33115  
 Conc: 1.99 ng/ml

Instrument :  
 ECD\_O  
 ClientSampleId :



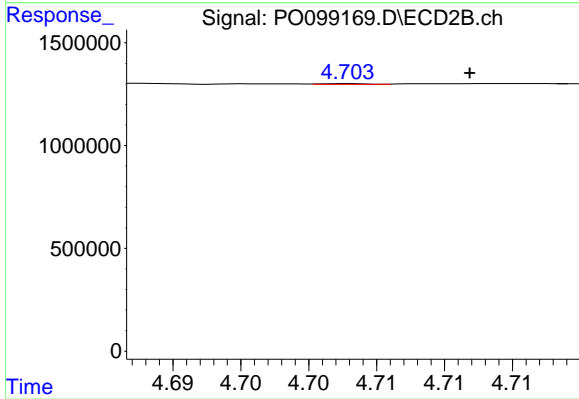
#15 AR-1232-5

R.T.: 5.119 min  
 Delta R.T.: -0.043 min  
 Response: 306716  
 Conc: 36.06 ng/ml



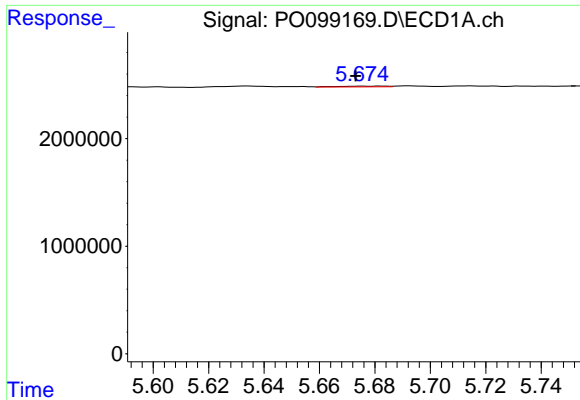
#16 AR-1242-1

R.T.: 5.653 min  
 Delta R.T.: 0.003 min  
 Response: 38340  
 Conc: 0.89 ng/ml



#16 AR-1242-1

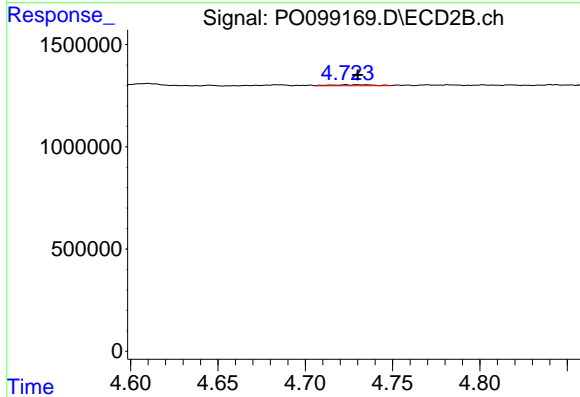
R.T.: 4.703 min  
 Delta R.T.: -0.009 min  
 Response: 8520  
 Conc: 0.48 ng/ml



#17 AR-1242-2

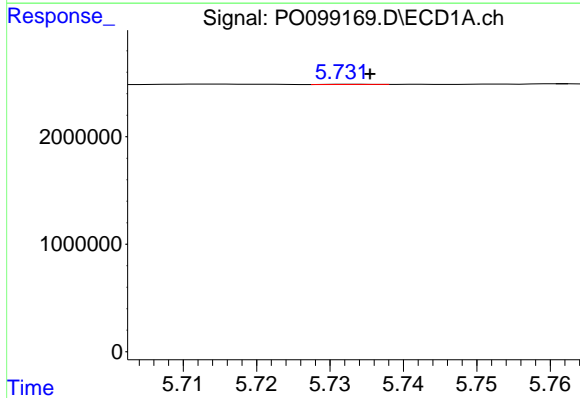
R.T.: 5.682 min  
 Delta R.T.: 0.009 min  
 Response: 88121  
 Conc: 1.38 ng/ml

Instrument :  
 ECD\_O  
 ClientSampleId :



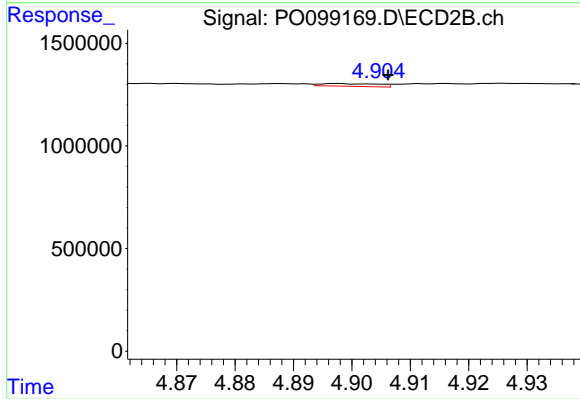
#17 AR-1242-2

R.T.: 4.723 min  
 Delta R.T.: -0.007 min  
 Response: 88465  
 Conc: 3.65 ng/ml



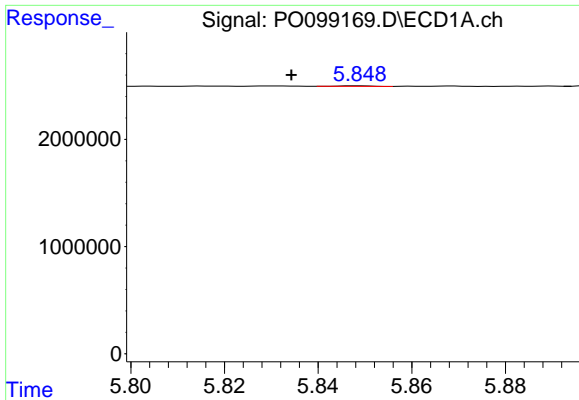
#18 AR-1242-3

R.T.: 5.732 min  
 Delta R.T.: -0.003 min  
 Response: 11239  
 Conc: 0.28 ng/ml



#18 AR-1242-3

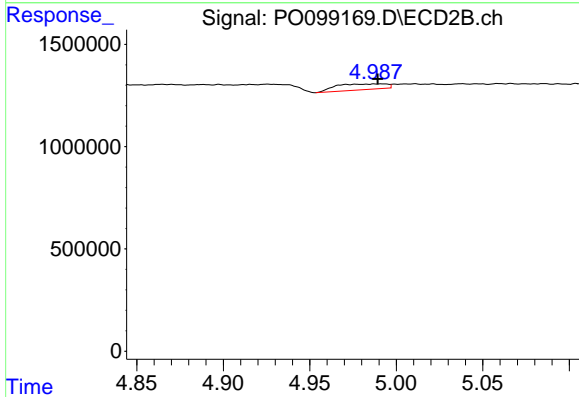
R.T.: 4.897 min  
 Delta R.T.: -0.009 min  
 Response: 93231  
 Conc: 7.27 ng/ml



#19 AR-1242-4

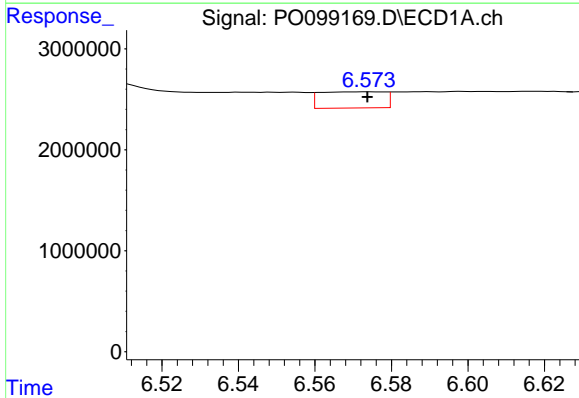
R.T.: 5.849 min  
 Delta R.T.: 0.014 min  
 Response: 25938  
 Conc: 0.83 ng/ml

Instrument :  
 ECD\_O  
 ClientSampleId :



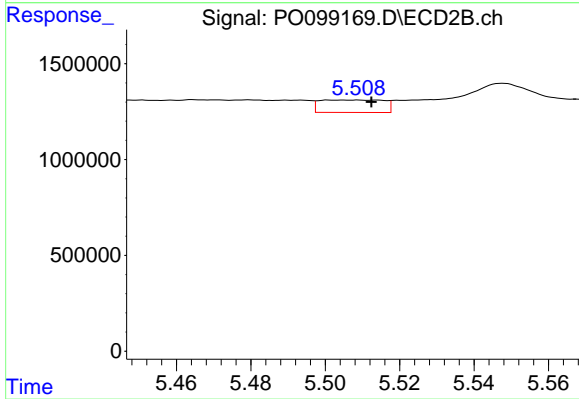
#19 AR-1242-4

R.T.: 4.992 min  
 Delta R.T.: 0.003 min  
 Response: 576314  
 Conc: 40.94 ng/ml



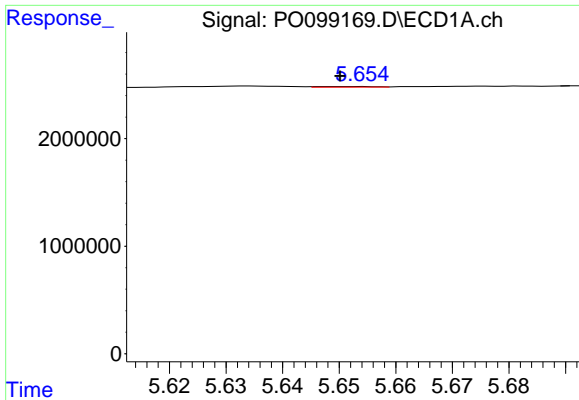
#20 AR-1242-5

R.T.: 6.574 min  
 Delta R.T.: 0.000 min  
 Response: 1882702  
 Conc: 61.03 ng/ml



#20 AR-1242-5

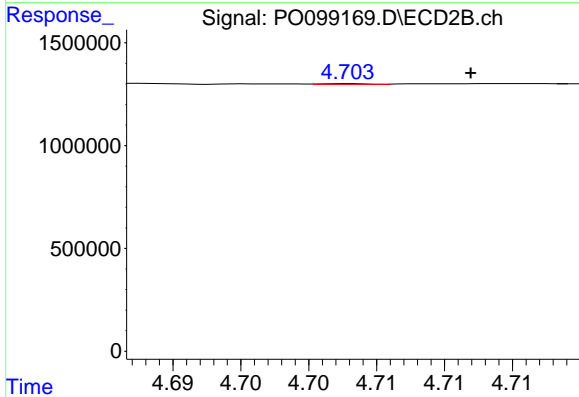
R.T.: 5.508 min  
 Delta R.T.: -0.004 min  
 Response: 772412  
 Conc: 46.22 ng/ml



#21 AR-1248-1

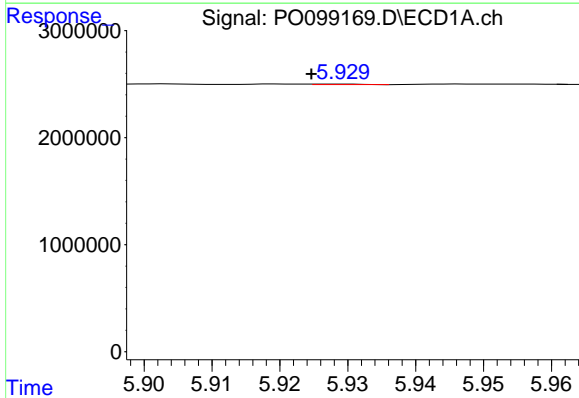
R.T.: 5.653 min  
 Delta R.T.: 0.003 min  
 Response: 38340  
 Conc: 1.13 ng/ml

Instrument :  
 ECD\_O  
 ClientSampleId :



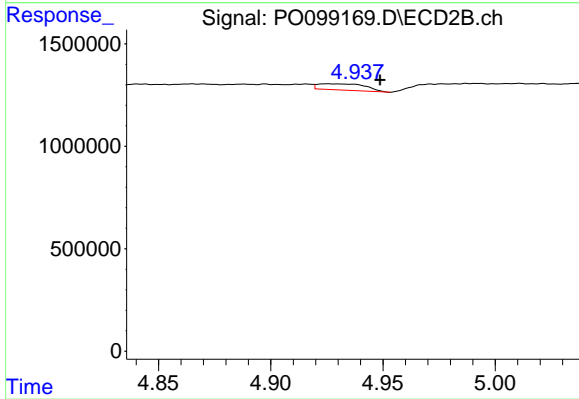
#21 AR-1248-1

R.T.: 4.703 min  
 Delta R.T.: -0.009 min  
 Response: 8520  
 Conc: 0.61 ng/ml



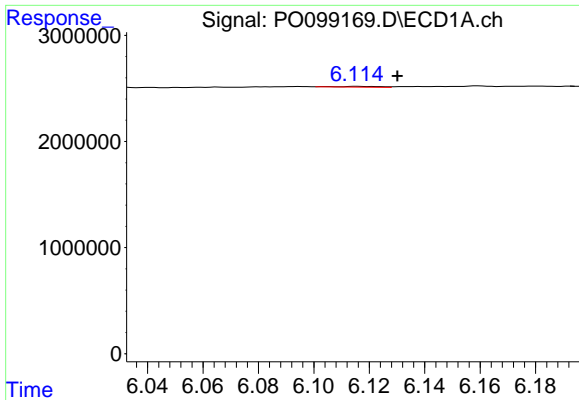
#22 AR-1248-2

R.T.: 5.929 min  
 Delta R.T.: 0.005 min  
 Response: 24364  
 Conc: 0.47 ng/ml



#22 AR-1248-2

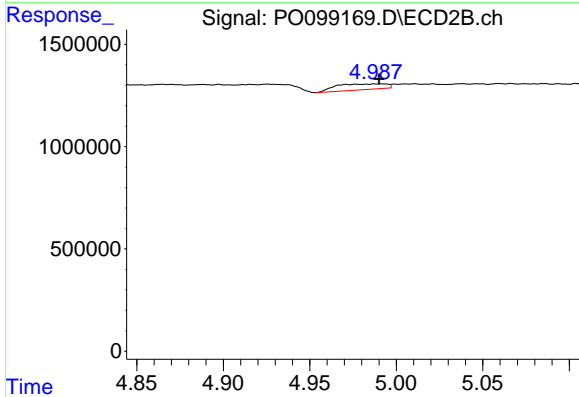
R.T.: 4.926 min  
 Delta R.T.: -0.023 min  
 Response: 445342  
 Conc: 22.42 ng/ml



#23 AR-1248-3

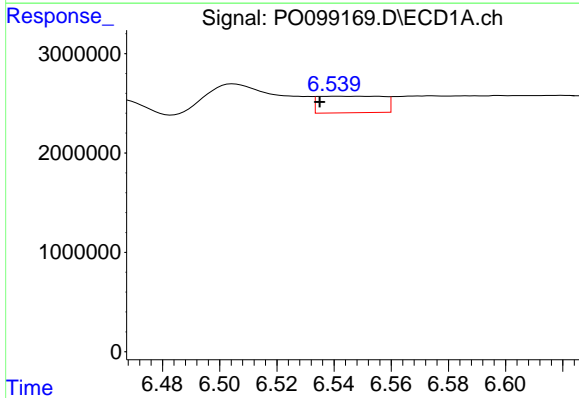
R.T.: 6.115 min  
 Delta R.T.: -0.015 min  
 Response: 80212  
 Conc: 1.41 ng/ml

Instrument :  
 ECD\_O  
 ClientSampleId :



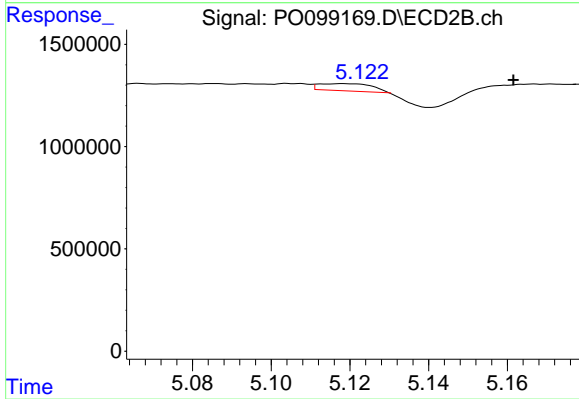
#23 AR-1248-3

R.T.: 4.992 min  
 Delta R.T.: 0.002 min  
 Response: 576314  
 Conc: 27.64 ng/ml



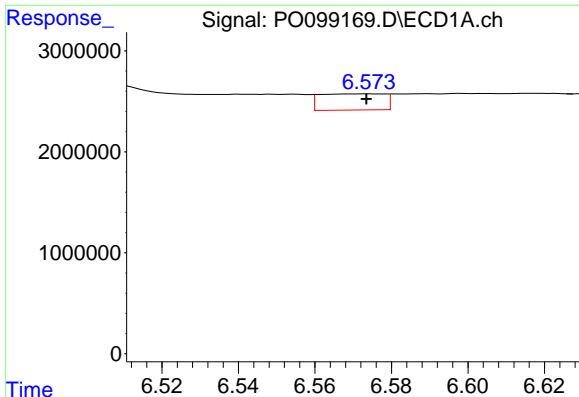
#24 AR-1248-4

R.T.: 6.541 min  
 Delta R.T.: 0.006 min  
 Response: 2609138  
 Conc: 47.85 ng/ml



#24 AR-1248-4

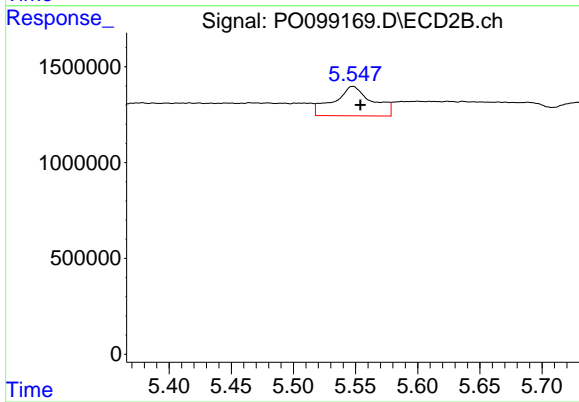
R.T.: 5.119 min  
 Delta R.T.: -0.043 min  
 Response: 306716  
 Conc: 12.48 ng/ml



#25 AR-1248-5

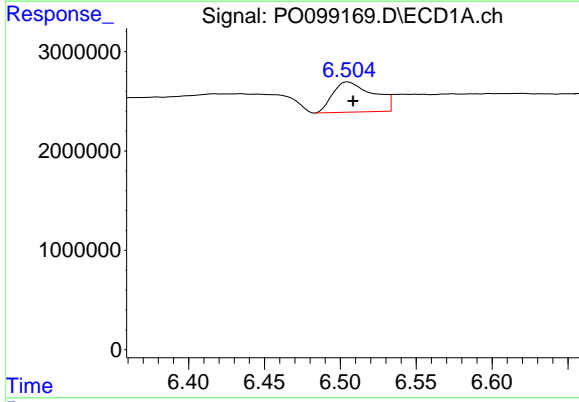
R.T.: 6.574 min  
 Delta R.T.: 0.000 min  
 Response: 1882702  
 Conc: 33.14 ng/ml

Instrument :  
 ECD\_O  
 ClientSampleId :



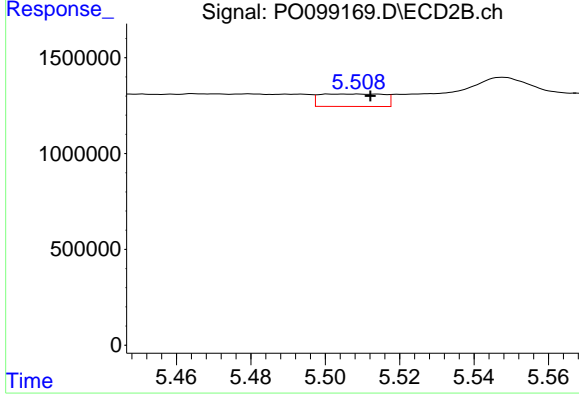
#25 AR-1248-5

R.T.: 5.548 min  
 Delta R.T.: -0.006 min  
 Response: 3322080  
 Conc: 152.96 ng/ml



#26 AR-1254-1

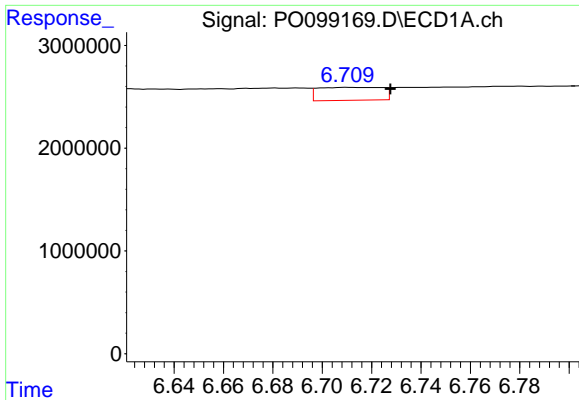
R.T.: 6.505 min  
 Delta R.T.: -0.004 min  
 Response: 5675242  
 Conc: 86.21 ng/ml



#26 AR-1254-1

R.T.: 5.508 min  
 Delta R.T.: -0.004 min  
 Response: 772412  
 Conc: 21.80 ng/ml

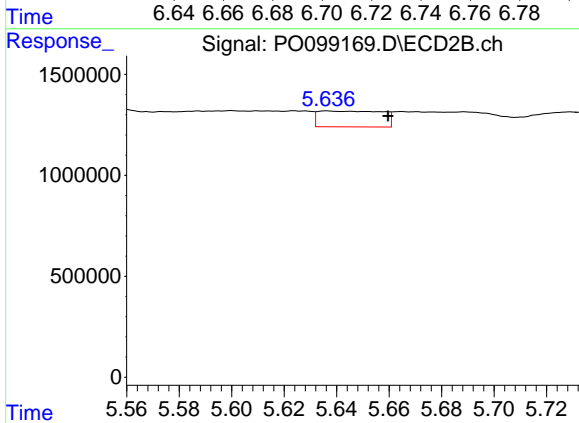




#27 AR-1254-2

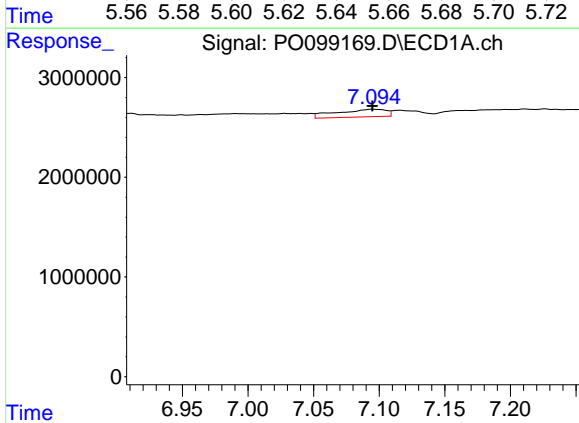
R.T.: 6.710 min  
 Delta R.T.: -0.017 min  
 Response: 2268653  
 Conc: 23.57 ng/ml

Instrument :  
 ECD\_O  
 ClientSampleId :



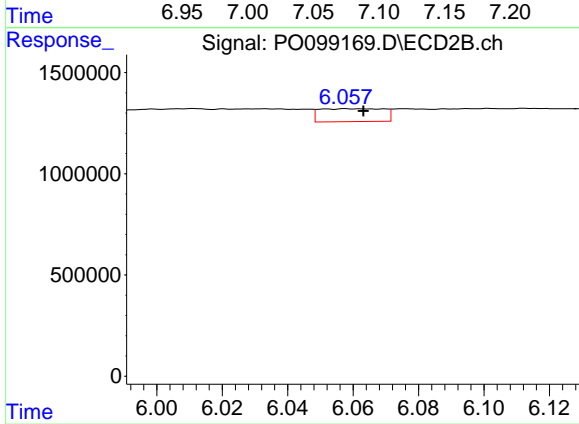
#27 AR-1254-2

R.T.: 5.636 min  
 Delta R.T.: -0.023 min  
 Response: 1328488  
 Conc: 41.54 ng/ml



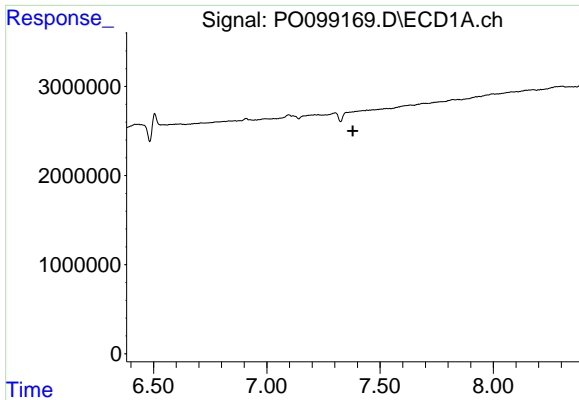
#28 AR-1254-3

R.T.: 7.095 min  
 Delta R.T.: 0.000 min  
 Response: 2007047  
 Conc: 22.45 ng/ml



#28 AR-1254-3

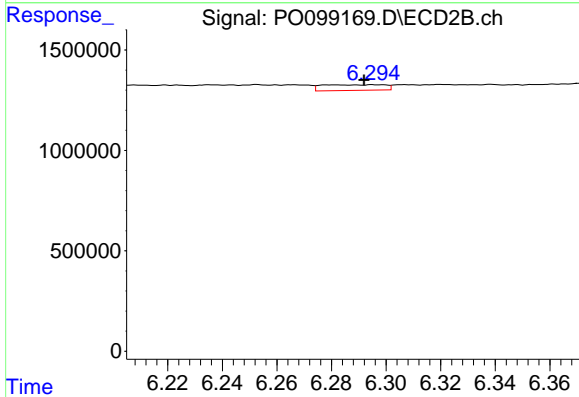
R.T.: 6.058 min  
 Delta R.T.: -0.005 min  
 Response: 865781  
 Conc: 17.71 ng/ml



#29 AR-1254-4

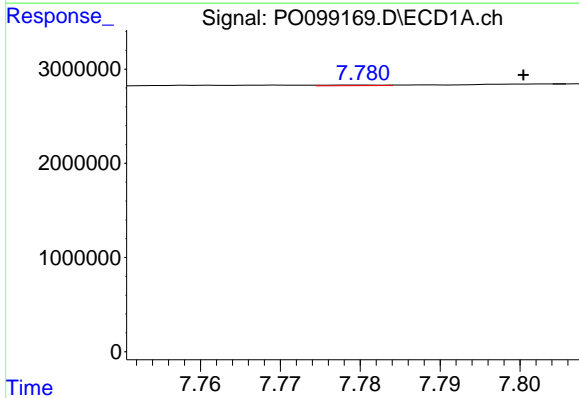
R.T.: 7.390 min  
 Delta R.T.: 0.010 min  
 Response: -243232  
 Conc: N.D.

Instrument :  
 ECD\_O  
 ClientSampleId :



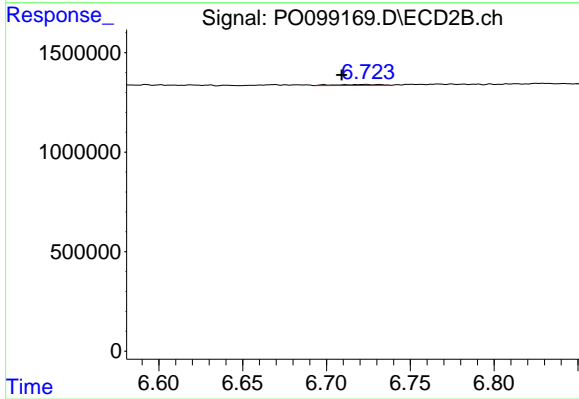
#29 AR-1254-4

R.T.: 6.296 min  
 Delta R.T.: 0.004 min  
 Response: 449237  
 Conc: 17.14 ng/ml



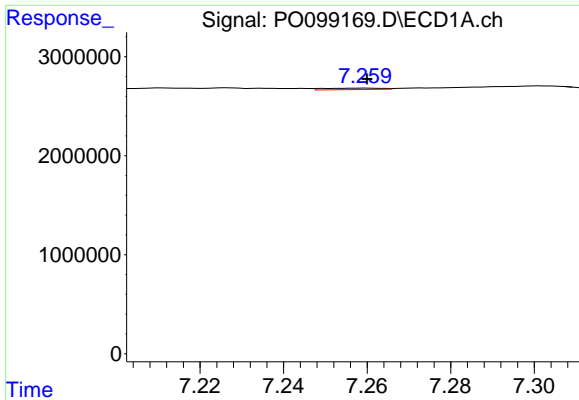
#30 AR-1254-5

R.T.: 7.780 min  
 Delta R.T.: -0.020 min  
 Response: 37004  
 Conc: 0.55 ng/ml



#30 AR-1254-5

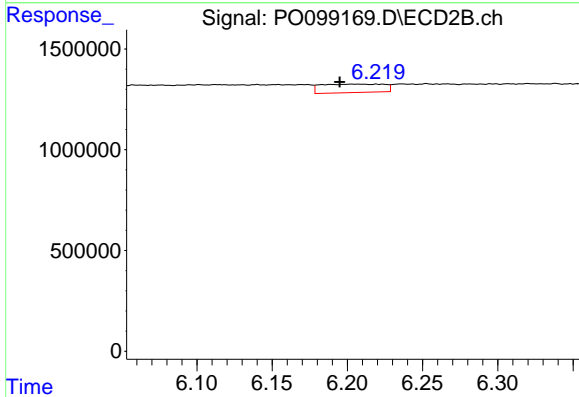
R.T.: 6.723 min  
 Delta R.T.: 0.014 min  
 Response: 91276  
 Conc: 2.17 ng/ml



#31 AR-1260-1

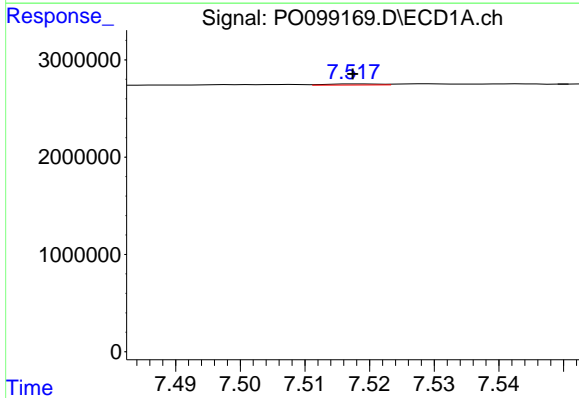
R.T.: 7.259 min  
 Delta R.T.: 0.000 min  
 Response: 135378  
 Conc: 1.89 ng/ml

Instrument :  
 ECD\_O  
 ClientSampleId :



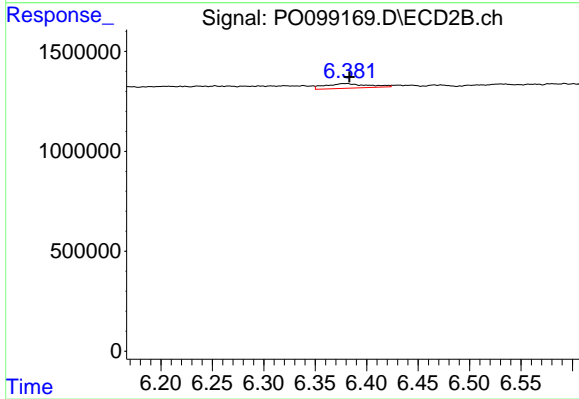
#31 AR-1260-1

R.T.: 6.204 min  
 Delta R.T.: 0.009 min  
 Response: 1219284  
 Conc: 34.56 ng/ml



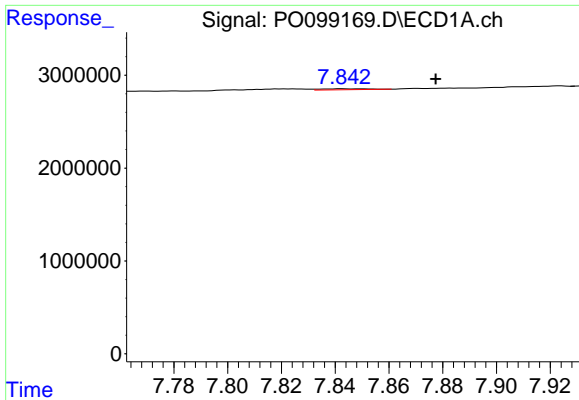
#32 AR-1260-2

R.T.: 7.518 min  
 Delta R.T.: 0.000 min  
 Response: 68460  
 Conc: 0.87 ng/ml



#32 AR-1260-2

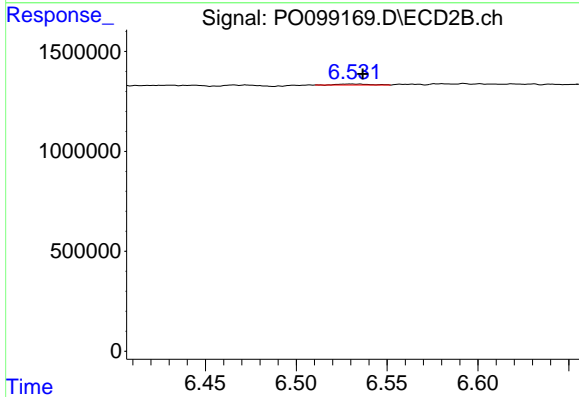
R.T.: 6.378 min  
 Delta R.T.: -0.005 min  
 Response: 675790  
 Conc: 16.86 ng/ml



#33 AR-1260-3

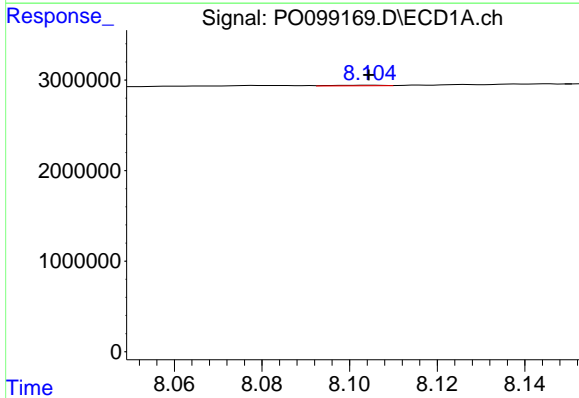
R.T.: 7.843 min  
 Delta R.T.: -0.034 min  
 Response: 126681  
 Conc: 2.32 ng/ml

Instrument :  
 ECD\_O  
 ClientSampleId :



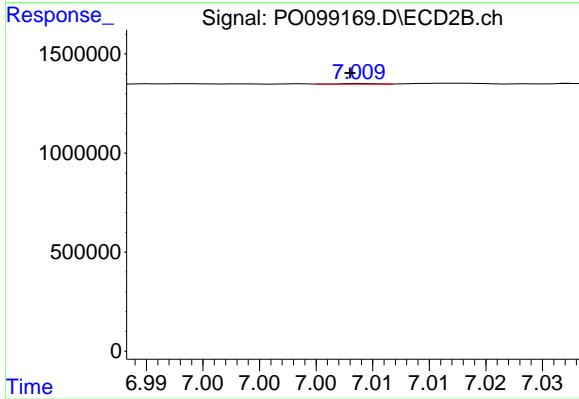
#33 AR-1260-3

R.T.: 6.530 min  
 Delta R.T.: -0.006 min  
 Response: 60307  
 Conc: 1.59 ng/ml



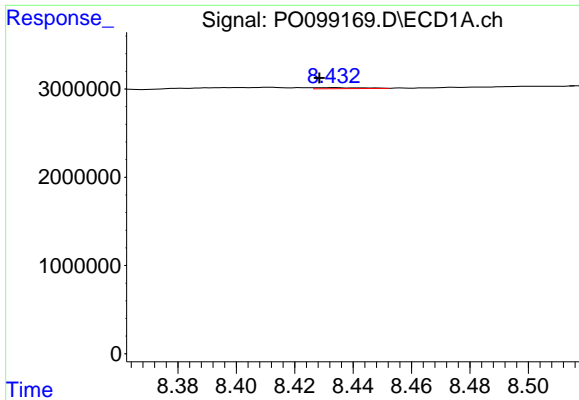
#34 AR-1260-4

R.T.: 8.104 min  
 Delta R.T.: 0.000 min  
 Response: 59623  
 Conc: 0.95 ng/ml



#34 AR-1260-4

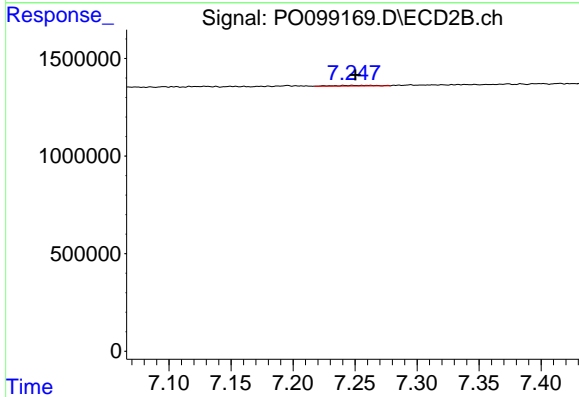
R.T.: 7.009 min  
 Delta R.T.: 0.001 min  
 Response: 7586  
 Conc: 0.26 ng/ml



#35 AR-1260-5

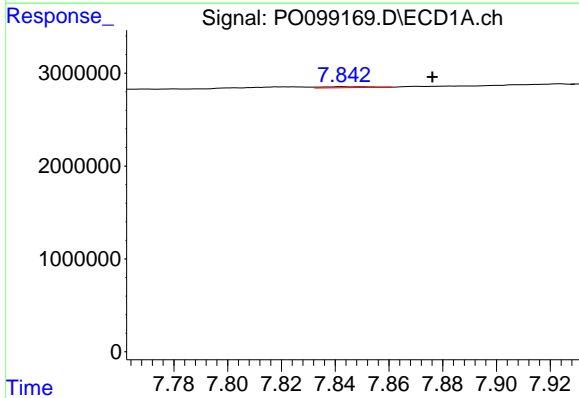
R.T.: 8.433 min  
 Delta R.T.: 0.005 min  
 Response: 128368  
 Conc: 1.20 ng/ml

Instrument :  
 ECD\_O  
 ClientSampleId :



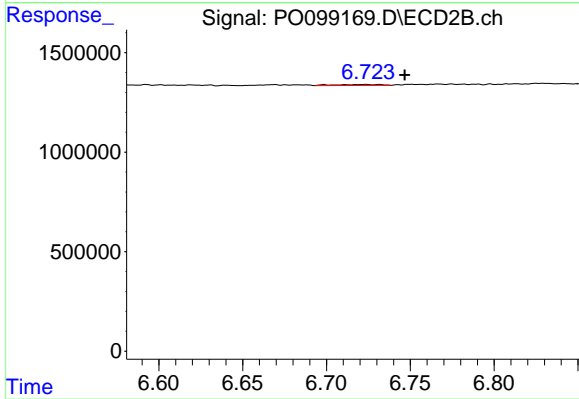
#35 AR-1260-5

R.T.: 7.241 min  
 Delta R.T.: -0.009 min  
 Response: 81056  
 Conc: 1.35 ng/ml



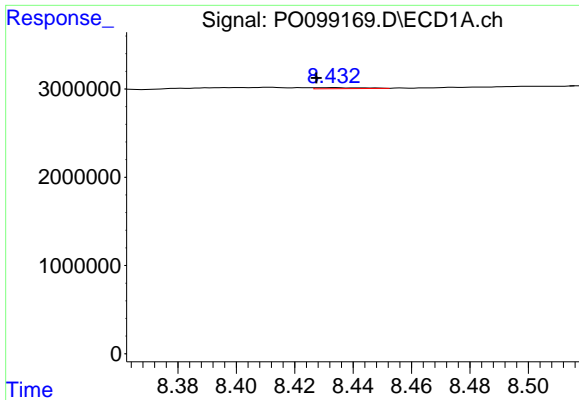
#36 AR-1262-1

R.T.: 7.843 min  
 Delta R.T.: -0.033 min  
 Response: 126681  
 Conc: 1.40 ng/ml



#36 AR-1262-1

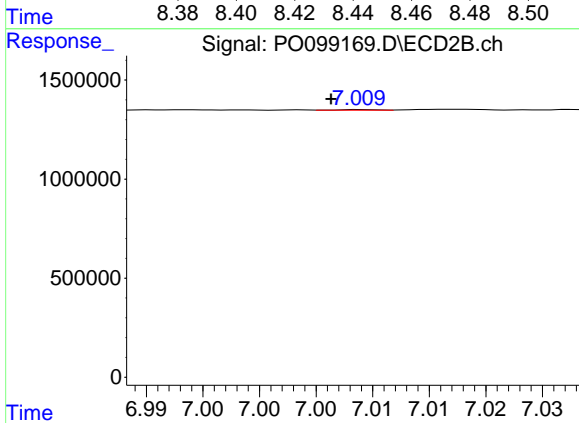
R.T.: 6.723 min  
 Delta R.T.: -0.023 min  
 Response: 91276  
 Conc: 1.95 ng/ml



#37 AR-1262-2

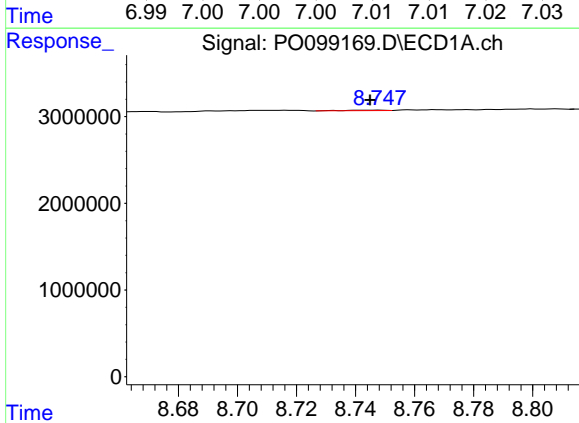
R.T.: 8.433 min  
 Delta R.T.: 0.006 min  
 Response: 128368  
 Conc: 0.96 ng/ml

Instrument :  
 ECD\_O  
 ClientSampleId :



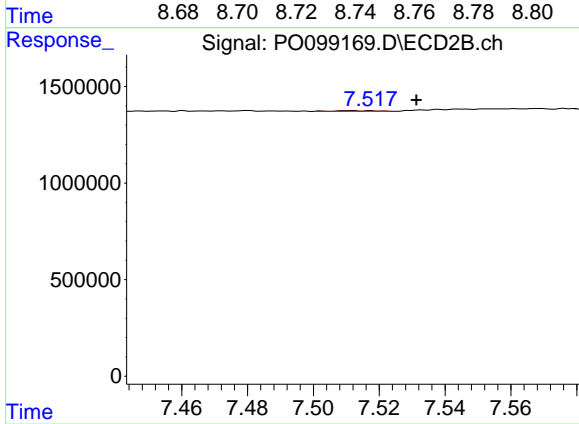
#37 AR-1262-2

R.T.: 7.009 min  
 Delta R.T.: 0.003 min  
 Response: 7586  
 Conc: 0.18 ng/ml



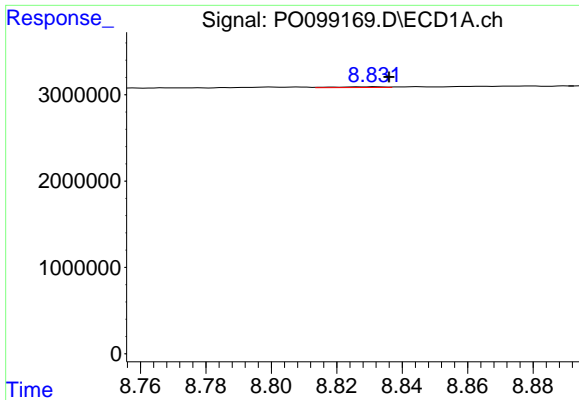
#38 AR-1262-3

R.T.: 8.748 min  
 Delta R.T.: 0.003 min  
 Response: 54889  
 Conc: 0.56 ng/ml



#38 AR-1262-3

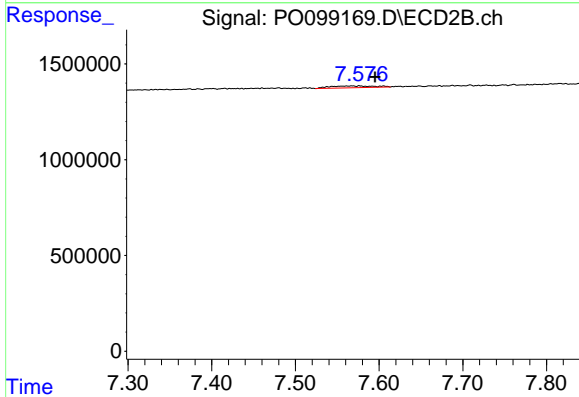
R.T.: 7.512 min  
 Delta R.T.: -0.019 min  
 Response: 31273  
 Conc: 0.98 ng/ml



#39 AR-1262-4

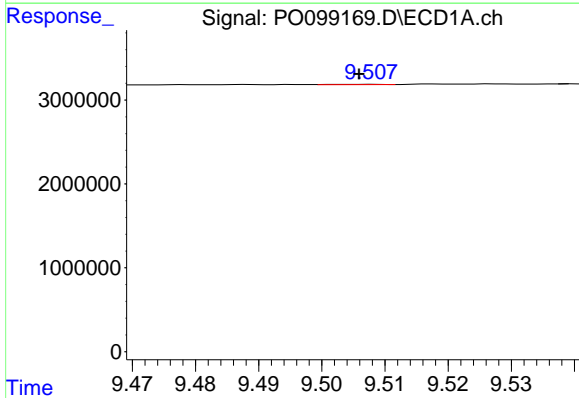
R.T.: 8.832 min  
 Delta R.T.: -0.004 min  
 Response: 85319  
 Conc: 1.07 ng/ml

Instrument :  
 ECD\_O  
 ClientSampleId :



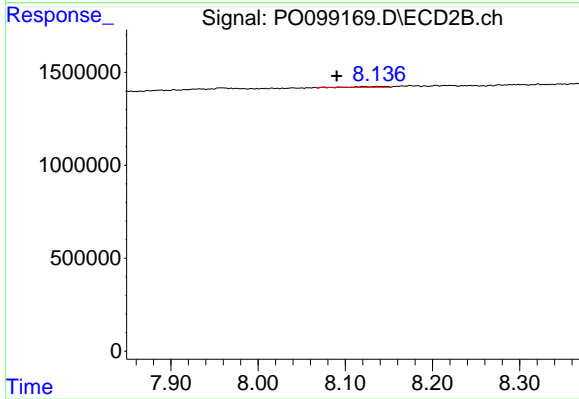
#39 AR-1262-4

R.T.: 7.567 min  
 Delta R.T.: -0.028 min  
 Response: 347143  
 Conc: 6.31 ng/ml



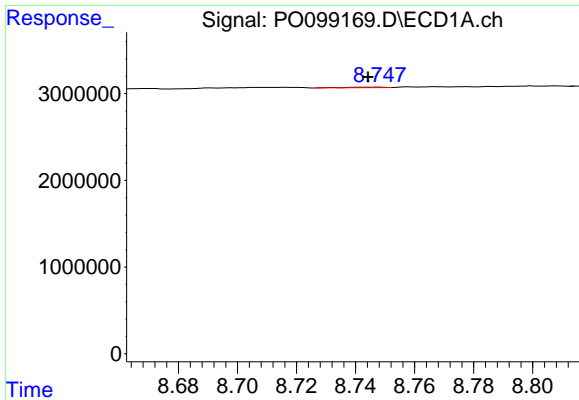
#40 AR-1262-5

R.T.: 9.508 min  
 Delta R.T.: 0.002 min  
 Response: 16347  
 Conc: 0.37 ng/ml



#40 AR-1262-5

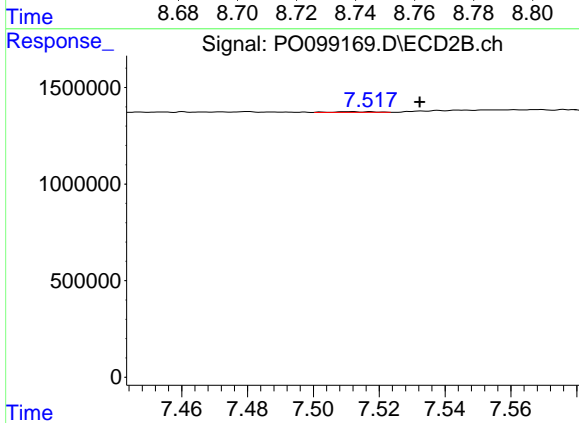
R.T.: 8.138 min  
 Delta R.T.: 0.048 min  
 Response: 88710  
 Conc: 3.53 ng/ml



#41 AR-1268-1

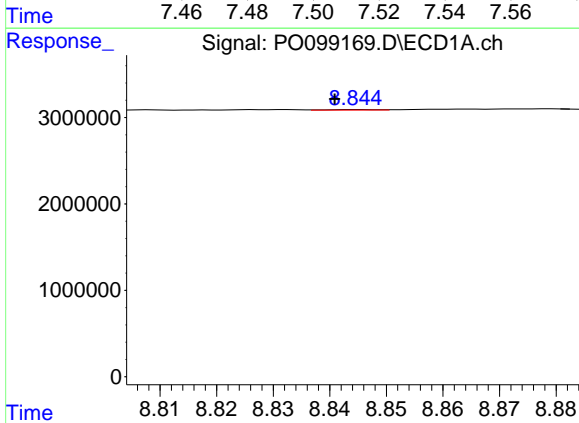
R.T.: 8.748 min  
 Delta R.T.: 0.003 min  
 Response: 54889  
 Conc: 0.32 ng/ml

Instrument :  
 ECD\_O  
 ClientSampleId :



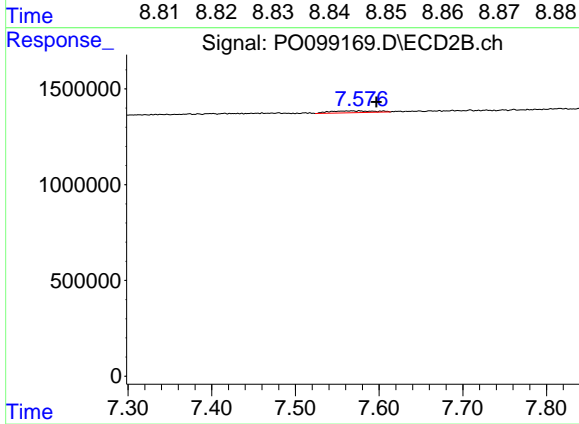
#41 AR-1268-1

R.T.: 7.512 min  
 Delta R.T.: -0.020 min  
 Response: 31273  
 Conc: 0.35 ng/ml



#42 AR-1268-2

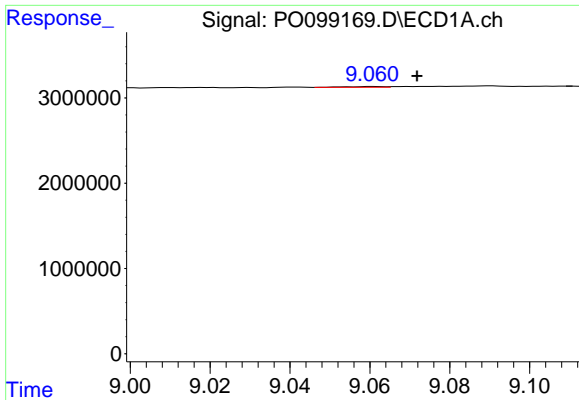
R.T.: 8.845 min  
 Delta R.T.: 0.004 min  
 Response: 34608  
 Conc: 0.22 ng/ml



#42 AR-1268-2

R.T.: 7.567 min  
 Delta R.T.: -0.030 min  
 Response: 347143  
 Conc: 4.40 ng/ml

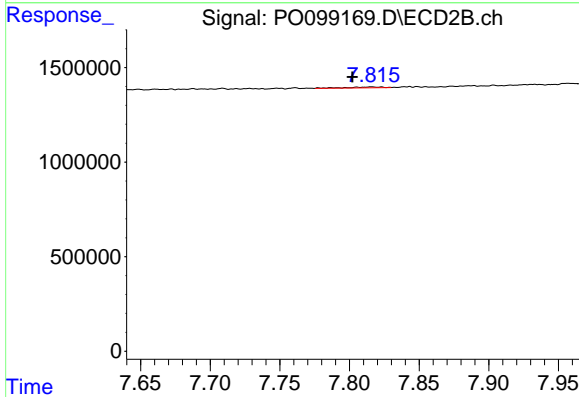




#43 AR-1268-3

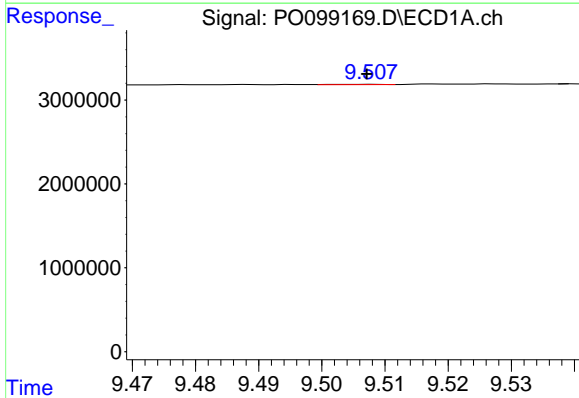
R.T.: 9.061 min  
 Delta R.T.: -0.011 min  
 Response: 66473  
 Conc: 0.47 ng/ml

Instrument :  
 ECD\_O  
 ClientSampleId :



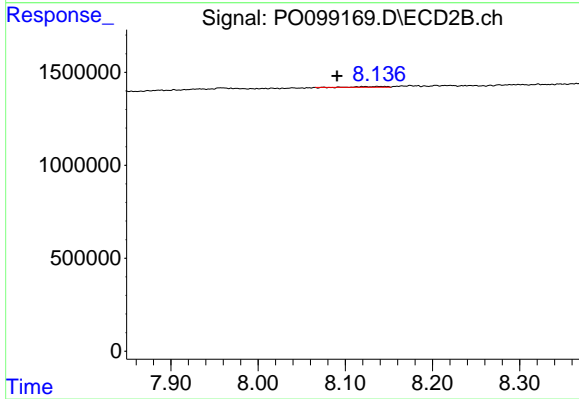
#43 AR-1268-3

R.T.: 7.816 min  
 Delta R.T.: 0.014 min  
 Response: 72514  
 Conc: 1.03 ng/ml



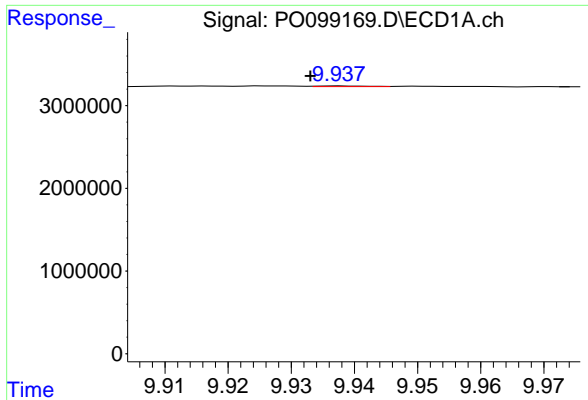
#44 AR-1268-4

R.T.: 9.508 min  
 Delta R.T.: 0.000 min  
 Response: 16347  
 Conc: 0.33 ng/ml



#44 AR-1268-4

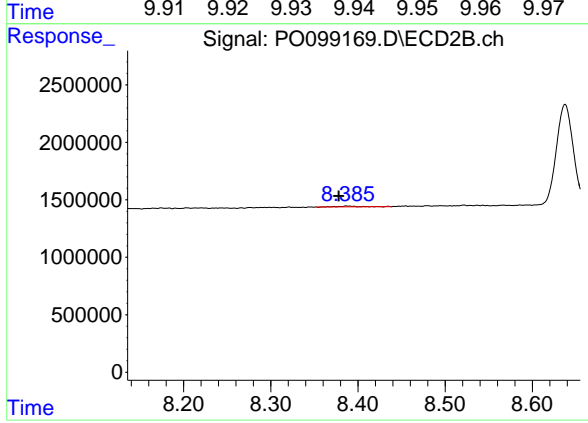
R.T.: 8.138 min  
 Delta R.T.: 0.047 min  
 Response: 88710  
 Conc: 3.22 ng/ml



#45 AR-1268-5

R.T.: 9.938 min  
 Delta R.T.: 0.005 min  
 Response: 40490  
 Conc: 0.10 ng/ml

Instrument :  
 ECD\_O  
 ClientSampleId :



#45 AR-1268-5

R.T.: 8.388 min  
 Delta R.T.: 0.010 min  
 Response: 113540  
 Conc: 0.60 ng/ml