

Data Path : Z:\pestpcbsrv\HPCHEM1\ECD_0\Data\PO103118\
 Data File : PO050812.D
 Signal(s) : Signal #1: ECD1A.CH Signal #2: ECD2B.CH
 Acq On : 31 Oct 2018 14:24
 Operator : SM/SJ
 Sample : J5615-09RE
 Misc :
 ALS Vial : 6 Sample Multiplier: 1

Instrument :
 ECD_0
 ClientSampleId :

Integration File signal 1: autoint1.e
 Integration File signal 2: autoint2.e
 Quant Time: Nov 01 01:42:45 2018
 Quant Method : Z:\pestpcbsrv\HPCHEM1\ECD_0\methods\PO102918.M
 Quant Title : GC EXTRACTABLES
 QLast Update : Tue Oct 30 07:48:38 2018
 Response via : Initial Calibration
 Integrator: ChemStation 6890 Scale Mode: Small noise peaks clipped

Volume Inj. : 2 µl
 Signal #1 Phase : ZB-MR1 Signal #2 Phase: ZB-MR2
 Signal #1 Info : 30Mx0.32mmx 0.50µ Signal #2 Info : 30M x 0.32mm x 0.25µm

Compound	RT#1	RT#2	Resp#1	Resp#2	ng/ml	ng/ml
----------	------	------	--------	--------	-------	-------

System Monitoring Compounds

Target Compounds

5) L1	AR-1016-3	0.000	4.565	0	29414	N.D.	3.672 #
6) L1	AR-1016-4	0.000	4.565	0	29414	N.D.	4.834 #
7) L1	AR-1016-5	0.000	4.761	0	31452	N.D.	3.645 #
13) L3	AR-1232-3	0.000	4.565	0	29414	N.D.	11.280 #
14) L3	AR-1232-4	0.000	4.565	0	29414	N.D.	13.194 #
15) L3	AR-1232-5	0.000	4.761	0	31452	N.D.	11.825 #
18) L4	AR-1242-3	0.000	4.565	0	29414	N.D.	5.825 #
19) L4	AR-1242-4	0.000	4.565	0	29414	N.D.	6.157 #
20) L4	AR-1242-5	0.000	5.054	0	40506	N.D.	6.287 #
22) L5	AR-1248-2	0.000	4.565	0	29414	N.D.	4.223 #
23) L5	AR-1248-3	0.000	4.565	0	29414	N.D.	4.208 #
24) L5	AR-1248-4	0.000	4.761	0	31452	N.D.	3.371 #
26) L6	AR-1254-1	0.000	5.054	0	40506	N.D.	2.113 #
32) L7	AR-1260-2	0.000	5.960	0	24499	N.D.	0.853 #
39) L8	AR-1262-4	0.000	7.169	0	36017	N.D.	1.224 #
42) L9	AR-1268-2	0.000	7.169	0	36017	N.D.	0.756 #

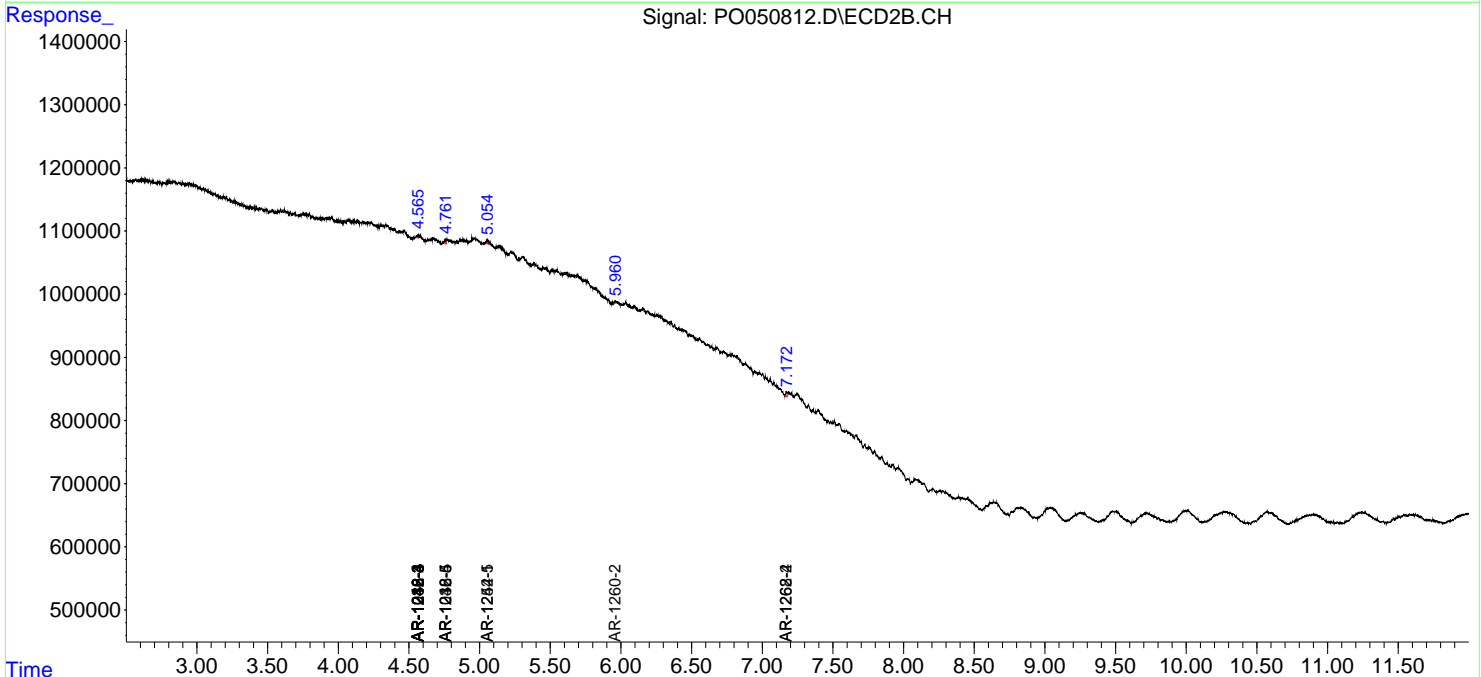
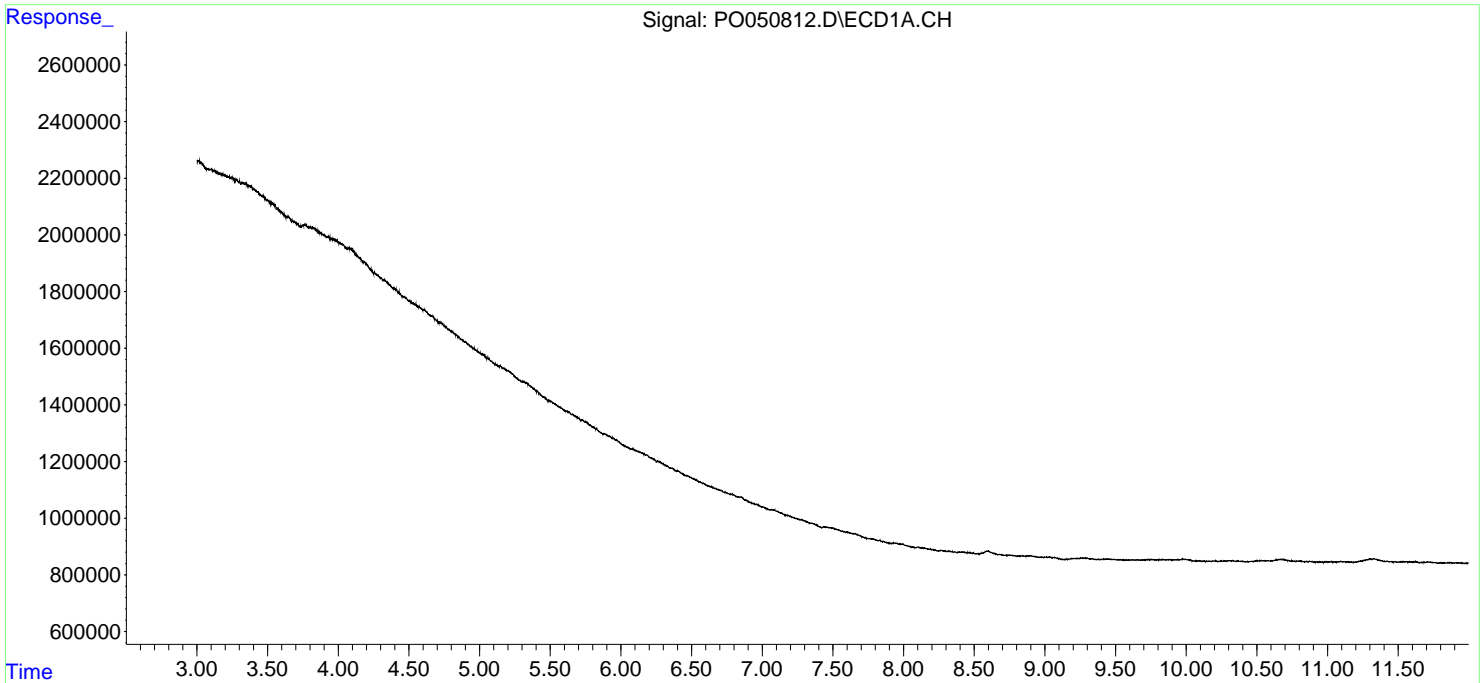
(f)=RT Delta > 1/2 Window (#)=Amounts differ by > 25% (m)=manual int.

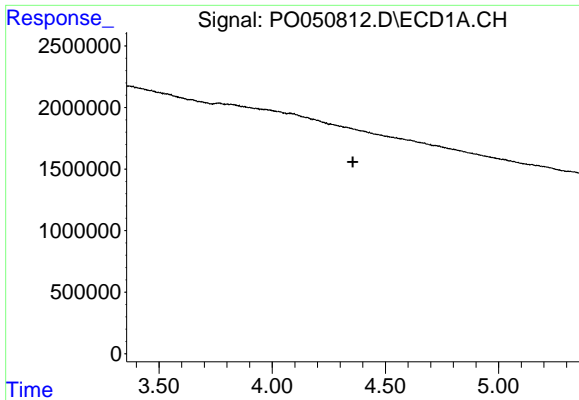
Data Path : Z:\pestpcbsrv\HPCHEM1\ECD_O\Data\PO103118\
 Data File : PO050812.D
 Signal(s) : Signal #1: ECD1A.CH Signal #2: ECD2B.CH
 Acq On : 31 Oct 2018 14:24
 Operator : SM/SJ
 Sample : J5615-09RE
 Misc :
 ALS Vial : 6 Sample Multiplier: 1

Instrument :
 ECD_O
 ClientSampleId :

Integration File signal 1: autoint1.e
 Integration File signal 2: autoint2.e
 Quant Time: Nov 01 01:42:45 2018
 Quant Method : Z:\pestpcbsrv\HPCHEM1\ECD_O\methods\PO102918.M
 Quant Title : GC EXTRACTABLES
 QLast Update : Tue Oct 30 07:48:38 2018
 Response via : Initial Calibration
 Integrator: ChemStation 6890 Scale Mode: Small noise peaks clipped

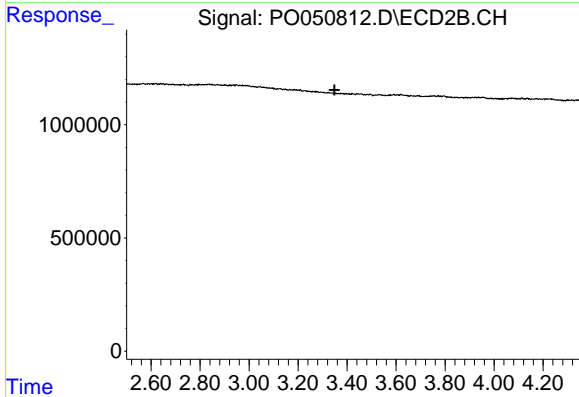
Volume Inj. : 2 µl
 Signal #1 Phase : ZB-MR1 Signal #2 Phase: ZB-MR2
 Signal #1 Info : 30Mx0.32mmx 0.50µ Signal #2 Info : 30M x 0.32mm x 0.25µm



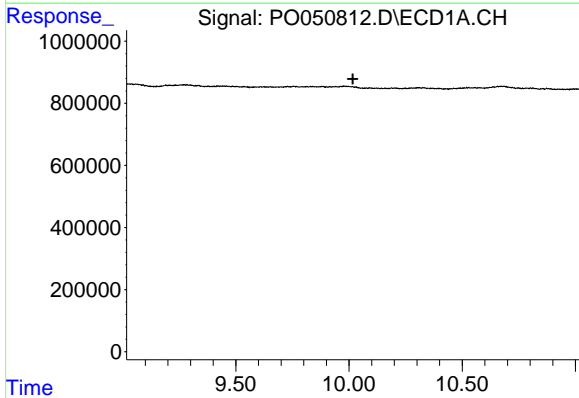


#1 Tetrachloro-m-xylene
 R.T.: 0.000 min
 Exp R.T. : 4.356 min
 Response: 0
 Conc: N.D.

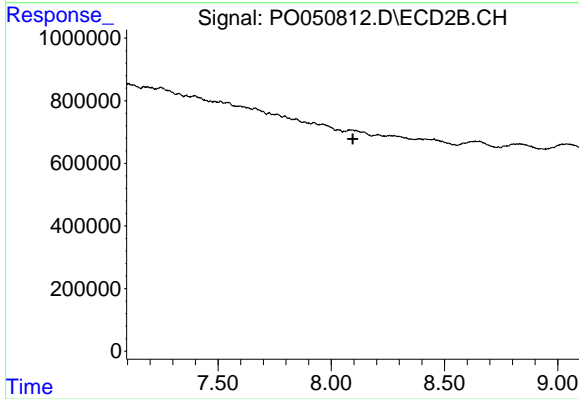
Instrument :
 ECD_O
 ClientSampled :



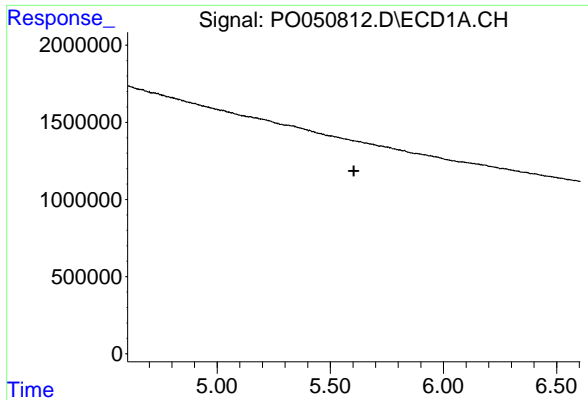
#1 Tetrachloro-m-xylene
 R.T.: 0.000 min
 Exp R.T. : 3.348 min
 Response: 0
 Conc: N.D.



#2 Decachlorobiphenyl
 R.T.: 0.000 min
 Exp R.T. : 10.017 min
 Response: 0
 Conc: N.D.

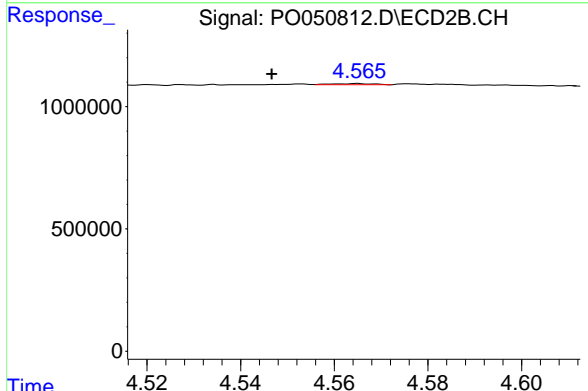


#2 Decachlorobiphenyl
 R.T.: 0.000 min
 Exp R.T. : 8.096 min
 Response: 0
 Conc: N.D.

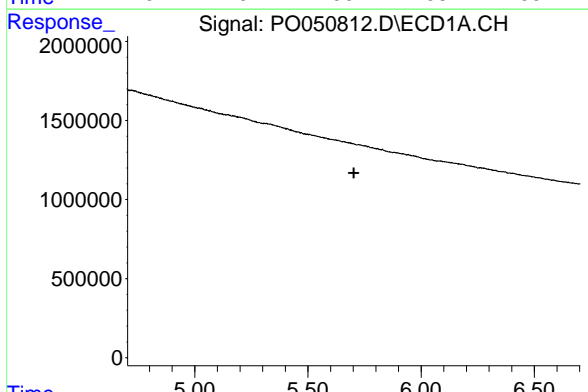


#5 AR-1016-3
 R.T.: 0.000 min
 Exp R.T. : 5.604 min
 Response: 0
 Conc: N.D.

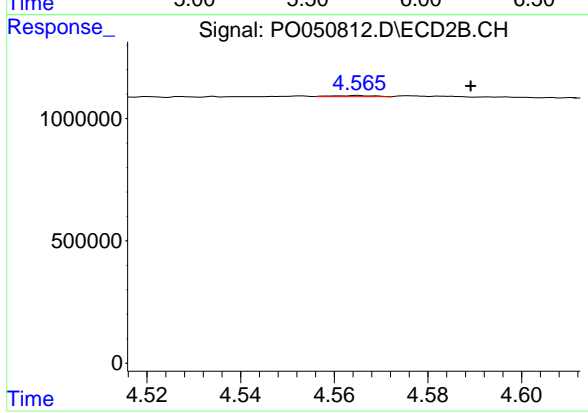
Instrument :
 ECD_O
 ClientSampleId :



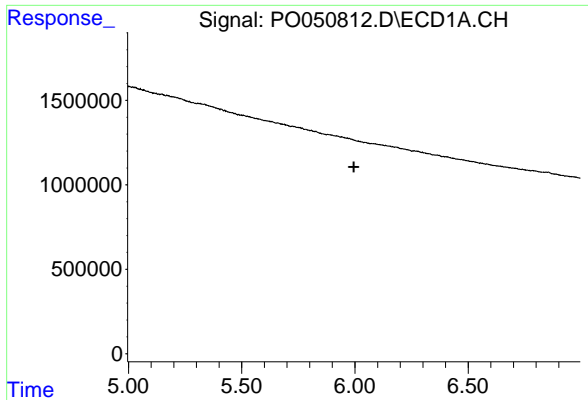
#5 AR-1016-3
 R.T.: 4.565 min
 Delta R.T.: 0.018 min
 Response: 29414
 Conc: 3.67 ng/ml



#6 AR-1016-4
 R.T.: 0.000 min
 Exp R.T. : 5.703 min
 Response: 0
 Conc: N.D.



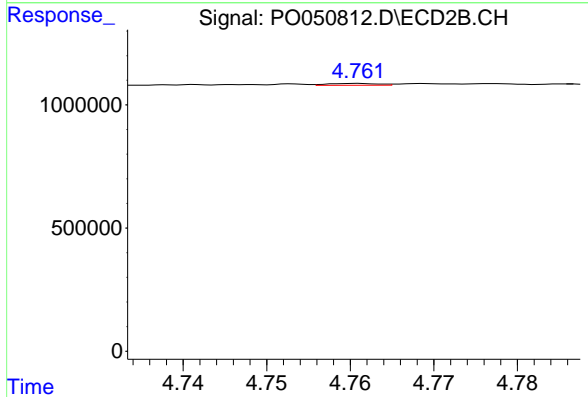
#6 AR-1016-4
 R.T.: 4.565 min
 Delta R.T.: -0.024 min
 Response: 29414
 Conc: 4.83 ng/ml



#7 AR-1016-5

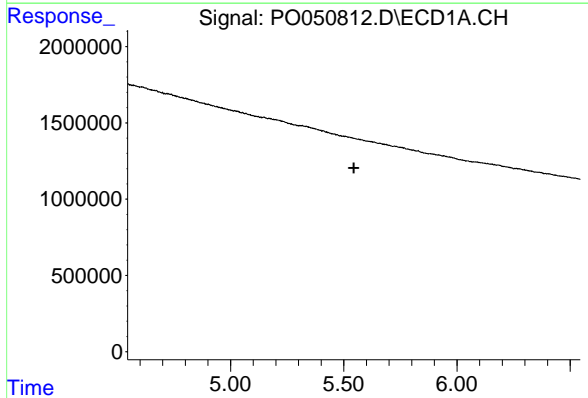
R.T.: 0.000 min
 Exp R.T. : 5.995 min
 Response: 0
 Conc: N.D.

Instrument :
 ECD_O
 ClientSampled :



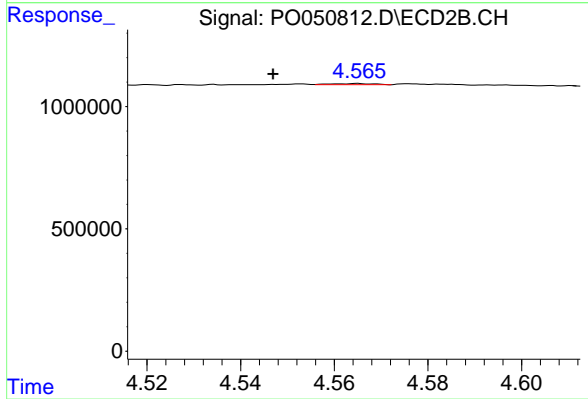
#7 AR-1016-5

R.T.: 4.761 min
 Delta R.T.: -0.027 min
 Response: 31452
 Conc: 3.64 ng/ml



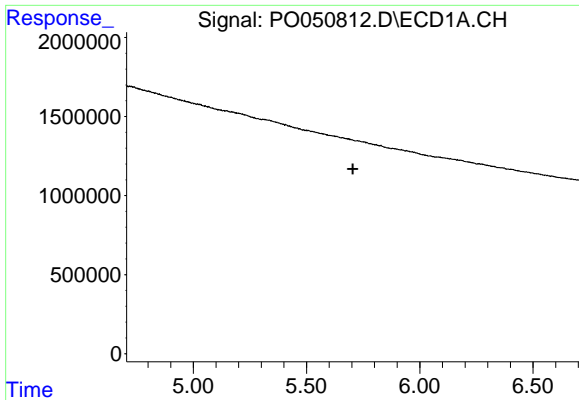
#13 AR-1232-3

R.T.: 0.000 min
 Exp R.T. : 5.545 min
 Response: 0
 Conc: N.D.



#13 AR-1232-3

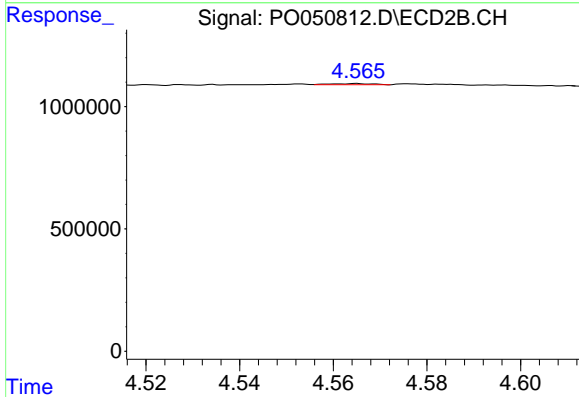
R.T.: 4.565 min
 Delta R.T.: 0.018 min
 Response: 29414
 Conc: 11.28 ng/ml



#14 AR-1232-4

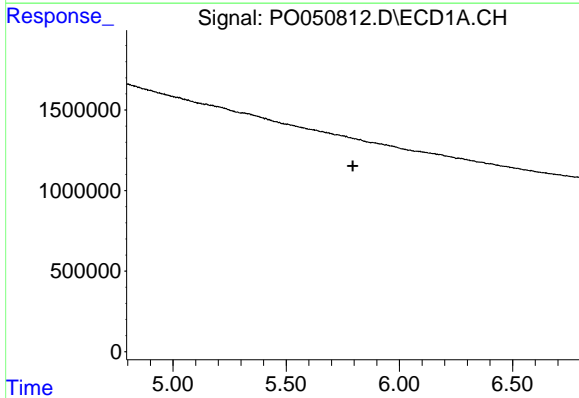
R.T.: 0.000 min
 Exp R.T. : 5.705 min
 Response: 0
 Conc: N.D.

Instrument :
 ECD_O
 ClientSampled :



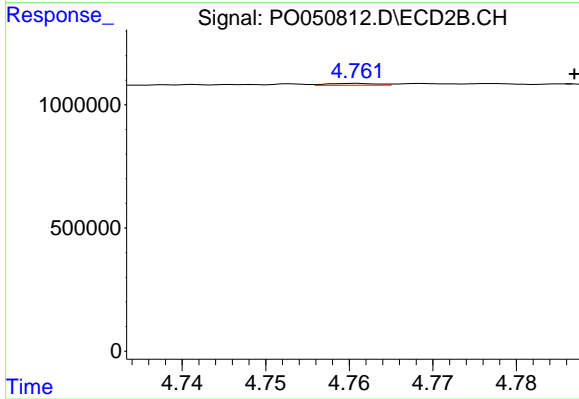
#14 AR-1232-4

R.T.: 4.565 min
 Delta R.T.: -0.062 min
 Response: 29414
 Conc: 13.19 ng/ml



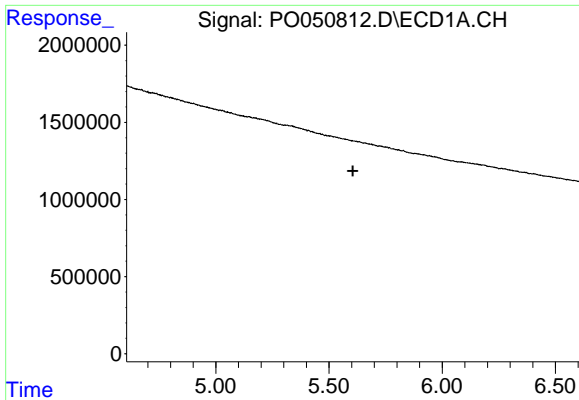
#15 AR-1232-5

R.T.: 0.000 min
 Exp R.T. : 5.794 min
 Response: 0
 Conc: N.D.



#15 AR-1232-5

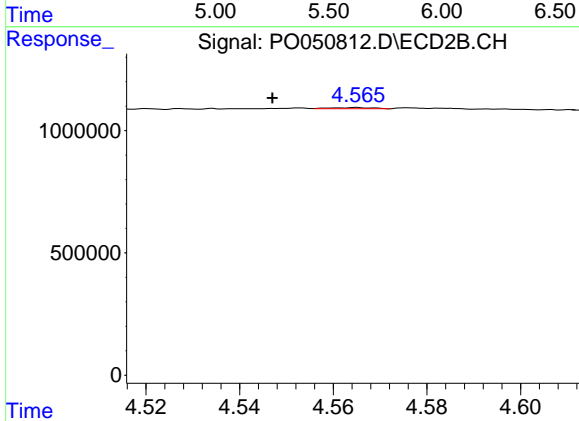
R.T.: 4.761 min
 Delta R.T.: -0.026 min
 Response: 31452
 Conc: 11.83 ng/ml



#18 AR-1242-3

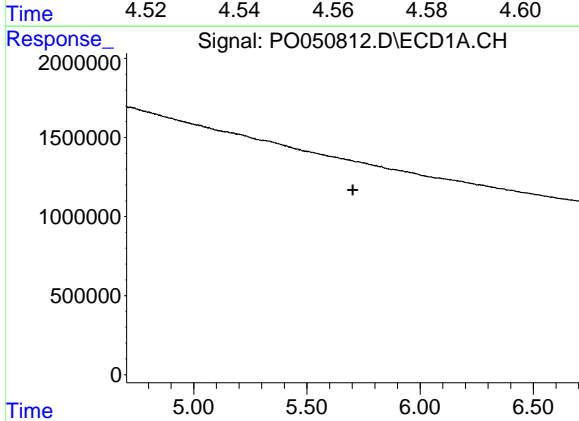
R.T.: 0.000 min
 Exp R.T. : 5.605 min
 Response: 0
 Conc: N.D.

Instrument :
 ECD_O
 ClientSampleId :



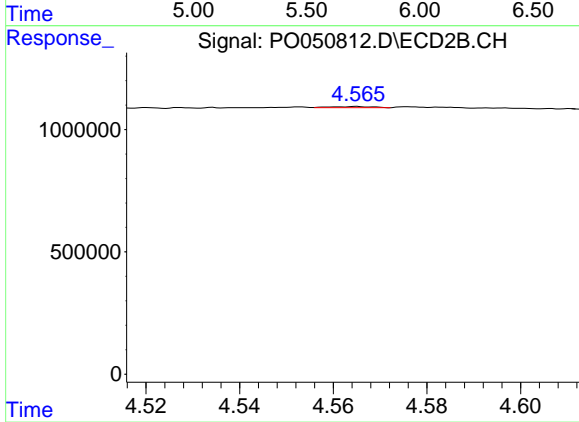
#18 AR-1242-3

R.T.: 4.565 min
 Delta R.T.: 0.018 min
 Response: 29414
 Conc: 5.82 ng/ml



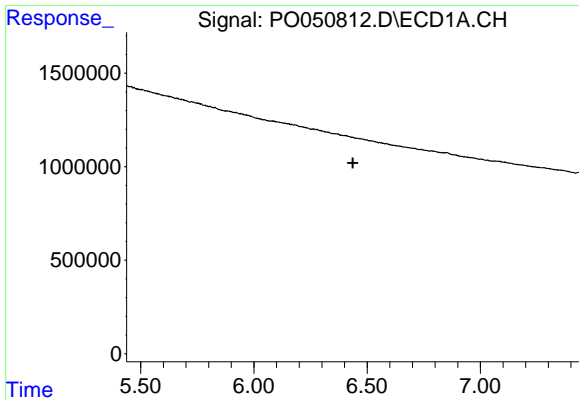
#19 AR-1242-4

R.T.: 0.000 min
 Exp R.T. : 5.703 min
 Response: 0
 Conc: N.D.



#19 AR-1242-4

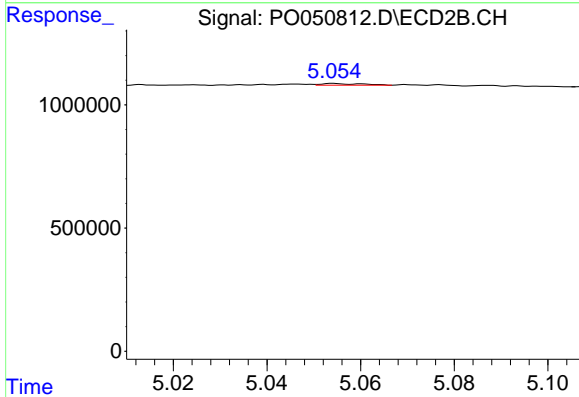
R.T.: 4.565 min
 Delta R.T.: -0.063 min
 Response: 29414
 Conc: 6.16 ng/ml



#20 AR-1242-5

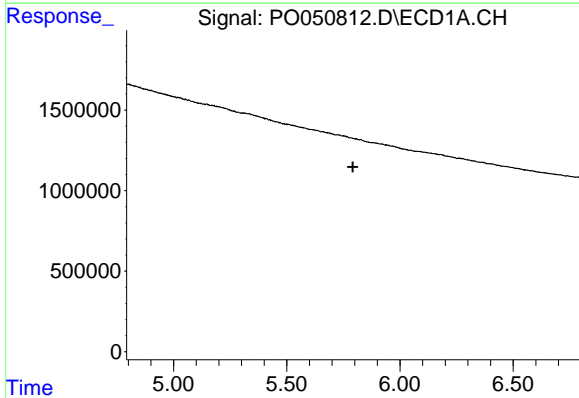
R.T.: 0.000 min
 Exp R.T. : 6.437 min
 Response: 0
 Conc: N.D.

Instrument :
 ECD_O
 ClientSampled :



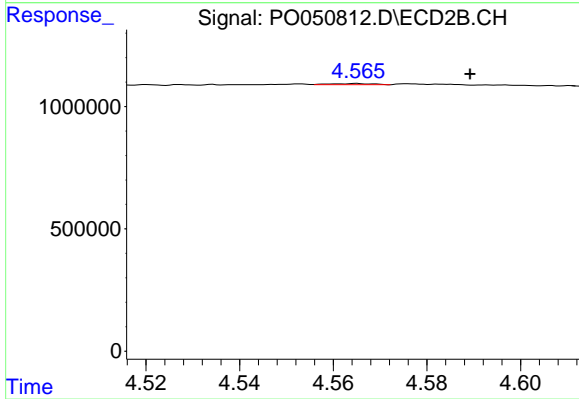
#20 AR-1242-5

R.T.: 5.054 min
 Delta R.T.: -0.068 min
 Response: 40506
 Conc: 6.29 ng/ml



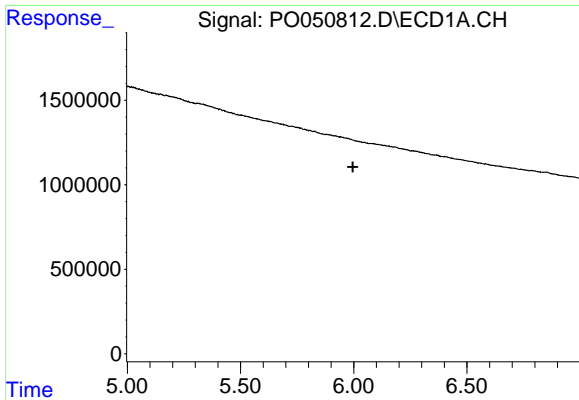
#22 AR-1248-2

R.T.: 0.000 min
 Exp R.T. : 5.792 min
 Response: 0
 Conc: N.D.



#22 AR-1248-2

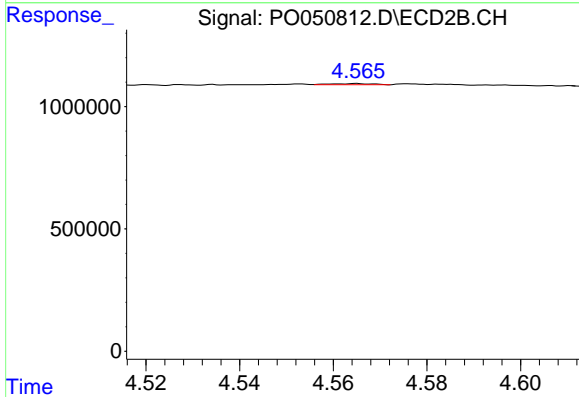
R.T.: 4.565 min
 Delta R.T.: -0.024 min
 Response: 29414
 Conc: 4.22 ng/ml



#23 AR-1248-3

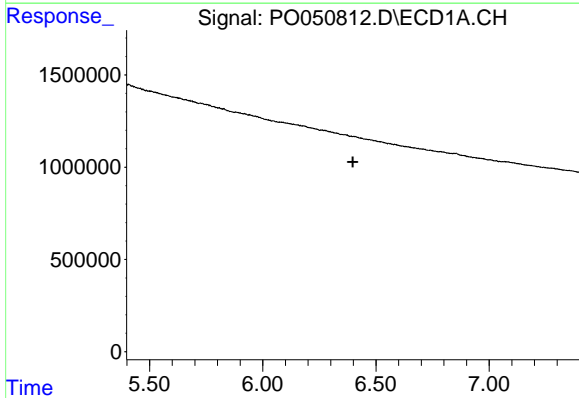
R.T.: 0.000 min
 Exp R.T. : 5.996 min
 Response: 0
 Conc: N.D.

Instrument :
 ECD_O
 ClientSampled :



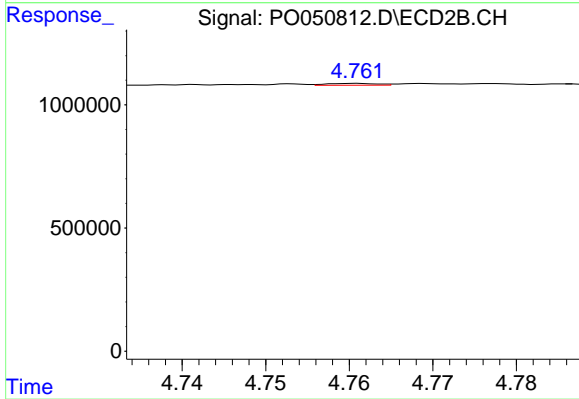
#23 AR-1248-3

R.T.: 4.565 min
 Delta R.T.: -0.062 min
 Response: 29414
 Conc: 4.21 ng/ml



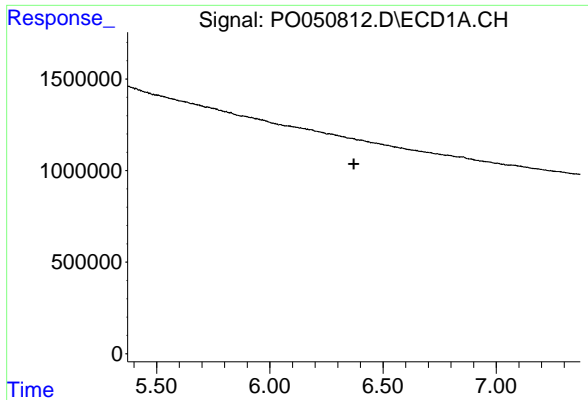
#24 AR-1248-4

R.T.: 0.000 min
 Exp R.T. : 6.398 min
 Response: 0
 Conc: N.D.



#24 AR-1248-4

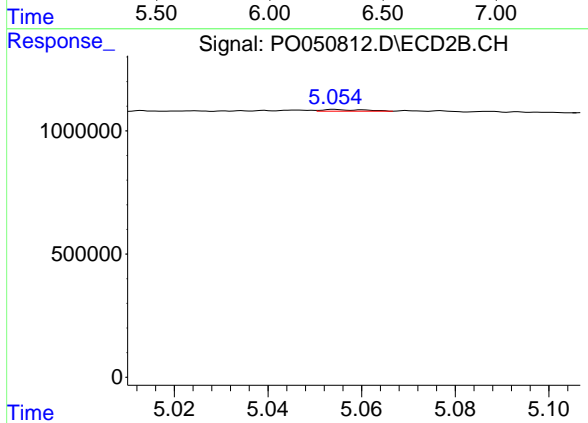
R.T.: 4.761 min
 Delta R.T.: -0.027 min
 Response: 31452
 Conc: 3.37 ng/ml



#26 AR-1254-1

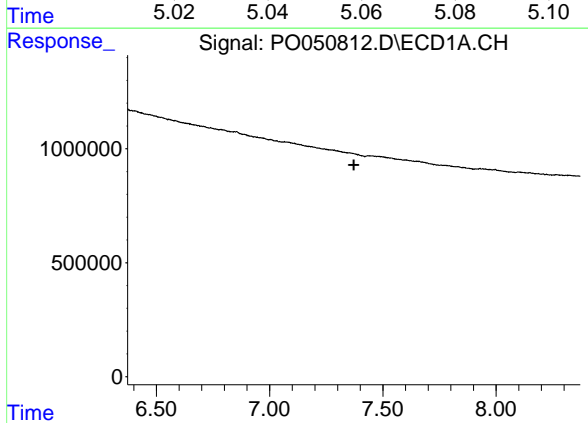
R.T.: 0.000 min
 Exp R.T. : 6.371 min
 Response: 0
 Conc: N.D.

Instrument :
 ECD_O
 ClientSampled :



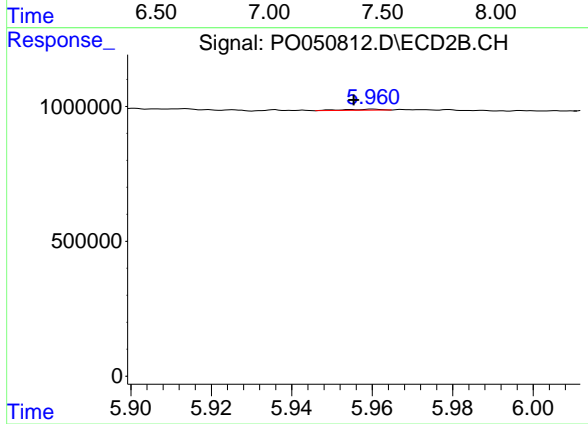
#26 AR-1254-1

R.T.: 5.054 min
 Delta R.T.: -0.068 min
 Response: 40506
 Conc: 2.11 ng/ml



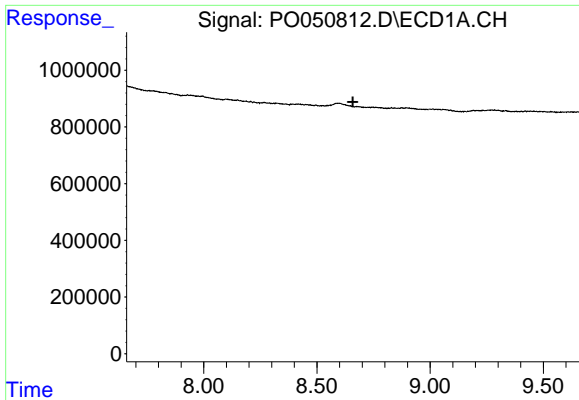
#32 AR-1260-2

R.T.: 0.000 min
 Exp R.T. : 7.372 min
 Response: 0
 Conc: N.D.



#32 AR-1260-2

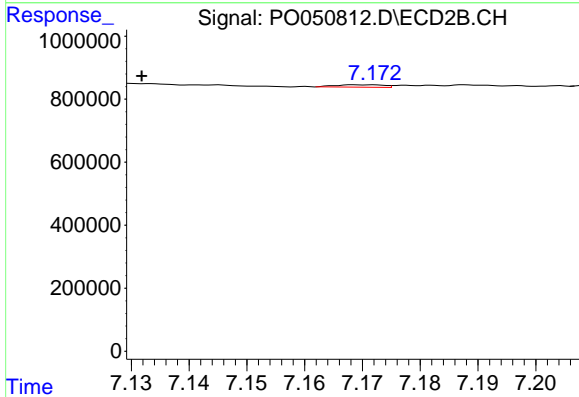
R.T.: 5.960 min
 Delta R.T.: 0.005 min
 Response: 24499
 Conc: 0.85 ng/ml



#39 AR-1262-4

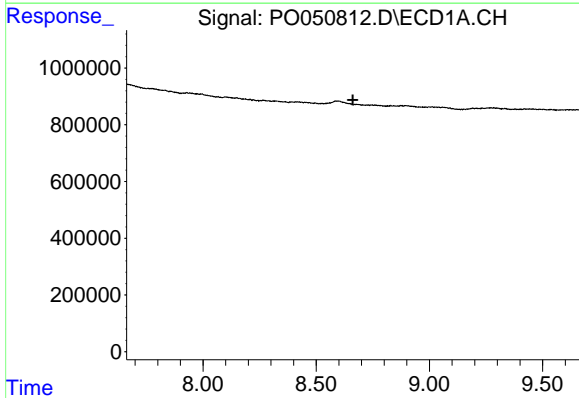
R.T.: 0.000 min
 Exp R.T. : 8.658 min
 Response: 0
 Conc: N.D.

Instrument :
 ECD_O
 ClientSampleId :



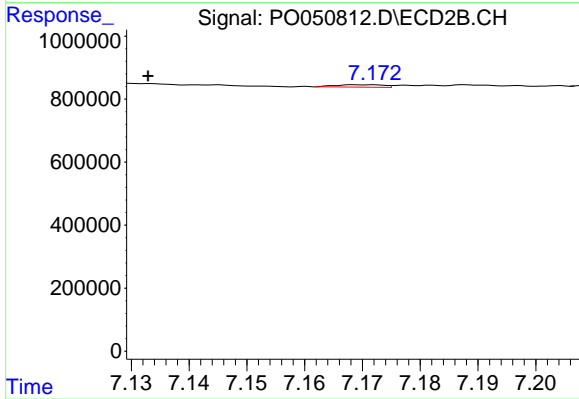
#39 AR-1262-4

R.T.: 7.169 min
 Delta R.T.: 0.037 min
 Response: 36017
 Conc: 1.22 ng/ml



#42 AR-1268-2

R.T.: 0.000 min
 Exp R.T. : 8.662 min
 Response: 0
 Conc: N.D.



#42 AR-1268-2

R.T.: 7.169 min
 Delta R.T.: 0.036 min
 Response: 36017
 Conc: 0.76 ng/ml