

Data Path : Z:\pestpcbsrv\HPCHEM1\ECD_0\Data\PO103118\
 Data File : PO050814.D
 Signal(s) : Signal #1: ECD1A.CH Signal #2: ECD2B.CH
 Acq On : 31 Oct 2018 14:58
 Operator : SM/SJ
 Sample : J5615-19RE
 Misc :
 ALS Vial : 8 Sample Multiplier: 1

Instrument :
 ECD_0
 ClientSampled :

Integration File signal 1: autoint1.e
 Integration File signal 2: autoint2.e
 Quant Time: Nov 01 01:43:06 2018
 Quant Method : Z:\pestpcbsrv\HPCHEM1\ECD_0\methods\PO102918.M
 Quant Title : GC EXTRACTABLES
 QLast Update : Tue Oct 30 07:48:38 2018
 Response via : Initial Calibration
 Integrator: ChemStation 6890 Scale Mode: Small noise peaks clipped

Volume Inj. : 2 µl
 Signal #1 Phase : ZB-MR1 Signal #2 Phase: ZB-MR2
 Signal #1 Info : 30Mx0.32mmx 0.50µ Signal #2 Info : 30M x 0.32mm x 0.25µm

Compound	RT#1	RT#2	Resp#1	Resp#2	ng/ml	ng/ml
System Monitoring Compounds						
1) SA Tetrachlo...	4.354	3.347	6486910	3408415	12.978	15.681
2) SA Decachlor...	10.013	8.093	2221984	1766584	7.149	6.906
Target Compounds						
3) L1 AR-1016-1	0.000	4.316	0	22840	N.D.	2.485 #
4) L1 AR-1016-2	0.000	4.316	0	22840	N.D.	1.474 #
5) L1 AR-1016-3	0.000	4.543	0	36159	N.D.	4.514 #
6) L1 AR-1016-4	0.000	4.561	0	50021	N.D.	8.221 #
7) L1 AR-1016-5	0.000	4.824	0	8108143	N.D.	939.579 #
8) L2 AR-1221-1	0.000	3.552	0	73435	N.D.	43.444 #
9) L2 AR-1221-2	0.000	3.628	0	25301	N.D.	19.881 #
12) L3 AR-1232-2	0.000	4.316	0	22840	N.D.	4.775 #
13) L3 AR-1232-3	0.000	4.551	0	52763	N.D.	20.234 #
14) L3 AR-1232-4	0.000	4.632	0	109744	N.D.	49.229 #
15) L3 AR-1232-5	0.000	4.824	0	8108143	N.D.	3048.492 #
16) L4 AR-1242-1	0.000	4.316	0	22840	N.D.	3.892 #
17) L4 AR-1242-2	0.000	4.316	0	22840	N.D.	2.286 #
18) L4 AR-1242-3	0.000	4.551	0	52763	N.D.	10.449 #
19) L4 AR-1242-4	0.000	4.632	0	109744	N.D.	22.974 #
20) L4 AR-1242-5	6.398	5.120	441476	2073370	47.330	321.827 #
21) L5 AR-1248-1	0.000	4.316	0	22840	N.D.	4.951 #
22) L5 AR-1248-2	0.000	4.561	0	50021	N.D.	7.182 #
23) L5 AR-1248-3	0.000	4.632	0	109744	N.D.	15.700 #
24) L5 AR-1248-4	6.398	4.824	441476	8108143	26.481	868.929 #
25) L5 AR-1248-5	6.398	5.144	441476	2002918	28.280	208.316 #
26) L6 AR-1254-1	6.369	5.120	2006638	2073370	91.383	108.135
27) L6 AR-1254-2	6.585	5.262	3342036	1702304	98.847	98.063
28) L6 AR-1254-3	6.954	5.644	6383498	6647959	183.313	234.875 #
29) L6 AR-1254-4	7.236	5.865	4751652	4034620	205.433	228.265
30) L6 AR-1254-5	7.674	6.268	26173784	19314652	1066.046	722.414 #
31) L7 AR-1260-1	7.114	5.769	2786619	4442608	108.320	214.871 #
32) L7 AR-1260-2	7.367	5.953	13021641	6023601	440.181	209.767 #
33) L7 AR-1260-3	7.708	6.097	1331802	2979963	62.840	120.838 #
34) L7 AR-1260-4	7.942	6.552	4020914	926197	175.717	44.906 #
35) L7 AR-1260-5	8.265	6.792	1315836	1742718	29.875	33.538
36) L8 AR-1262-1	7.708	6.310	1331802	4059952	53.984	144.278 #
37) L8 AR-1262-2	8.265	6.792	1315836	1742718	33.620	38.794
38) L8 AR-1262-3	8.586	7.072	942721	63788	37.315	3.553 #
39) L8 AR-1262-4	0.000	7.125	0	1779906	N.D.	60.501 #
40) L8 AR-1262-5	0.000	7.611	0	95362	N.D.	8.217 #
41) L9 AR-1268-1	8.586	7.072	942721	63788	18.685	1.158 #
42) L9 AR-1268-2	0.000	7.125	0	1779906	N.D.	37.341 #
43) L9 AR-1268-3	0.000	7.269	0	334740	N.D.	7.770 #

Data Path : Z:\pestpcbsrv\HPCHEM1\ECD_0\Data\PO103118\
 Data File : PO050814.D
 Signal(s) : Signal #1: ECD1A.CH Signal #2: ECD2B.CH
 Acq On : 31 Oct 2018 14:58
 Operator : SM/SJ
 Sample : J5615-19RE
 Misc :
 ALS Vial : 8 Sample Multiplier: 1

Instrument :
 ECD_0
 ClientSampleId :

Integration File signal 1: autoint1.e
 Integration File signal 2: autoint2.e
 Quant Time: Nov 01 01:43:06 2018
 Quant Method : Z:\pestpcbsrv\HPCHEM1\ECD_0\methods\PO102918.M
 Quant Title : GC EXTRACTABLES
 QLast Update : Tue Oct 30 07:48:38 2018
 Response via : Initial Calibration
 Integrator: ChemStation 6890 Scale Mode: Small noise peaks clipped

Volume Inj. : 2 µl
 Signal #1 Phase : ZB-MR1 Signal #2 Phase: ZB-MR2
 Signal #1 Info : 30Mx0.32mmx 0.50µ Signal #2 Info : 30M x 0.32mm x 0.25µm

	Compound	RT#1	RT#2	Resp#1	Resp#2	ng/ml	ng/ml
44)	L9 AR-1268-4	0.000	7.611	0	95362	N.D.	6.826 #

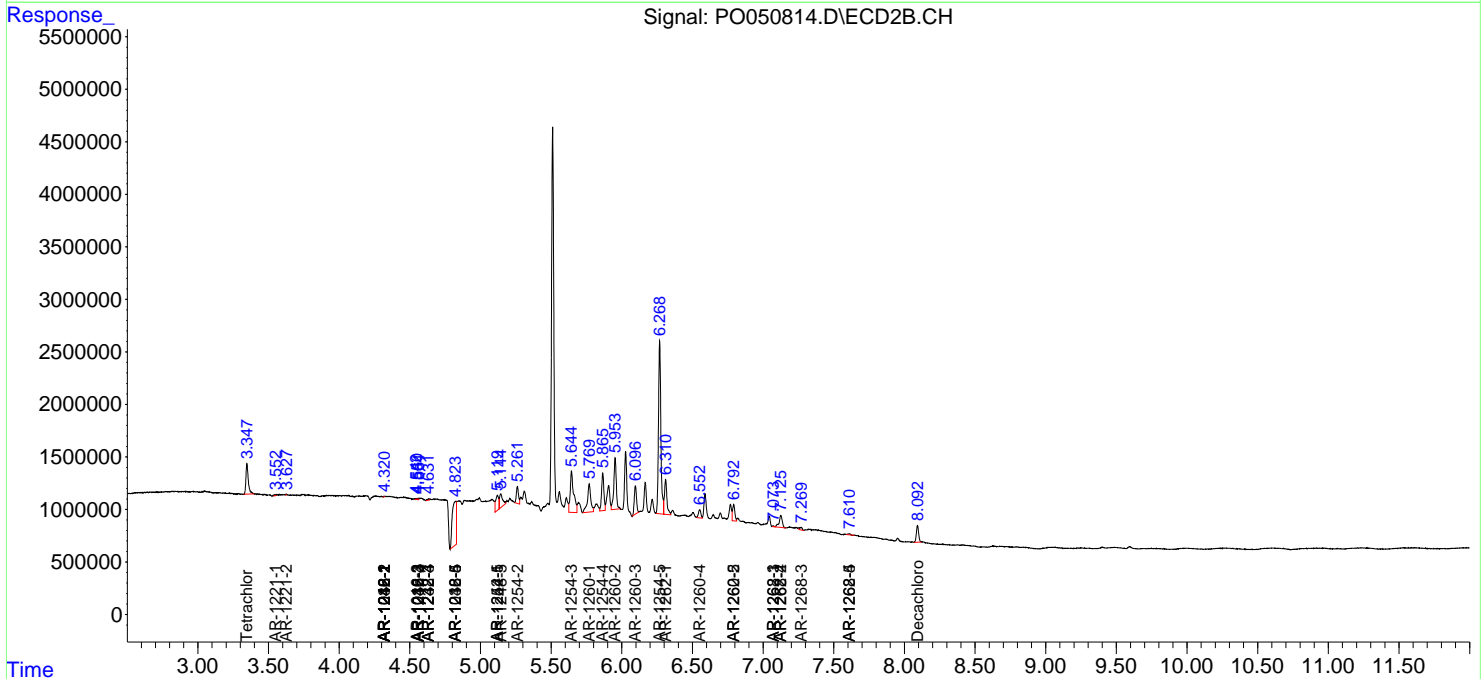
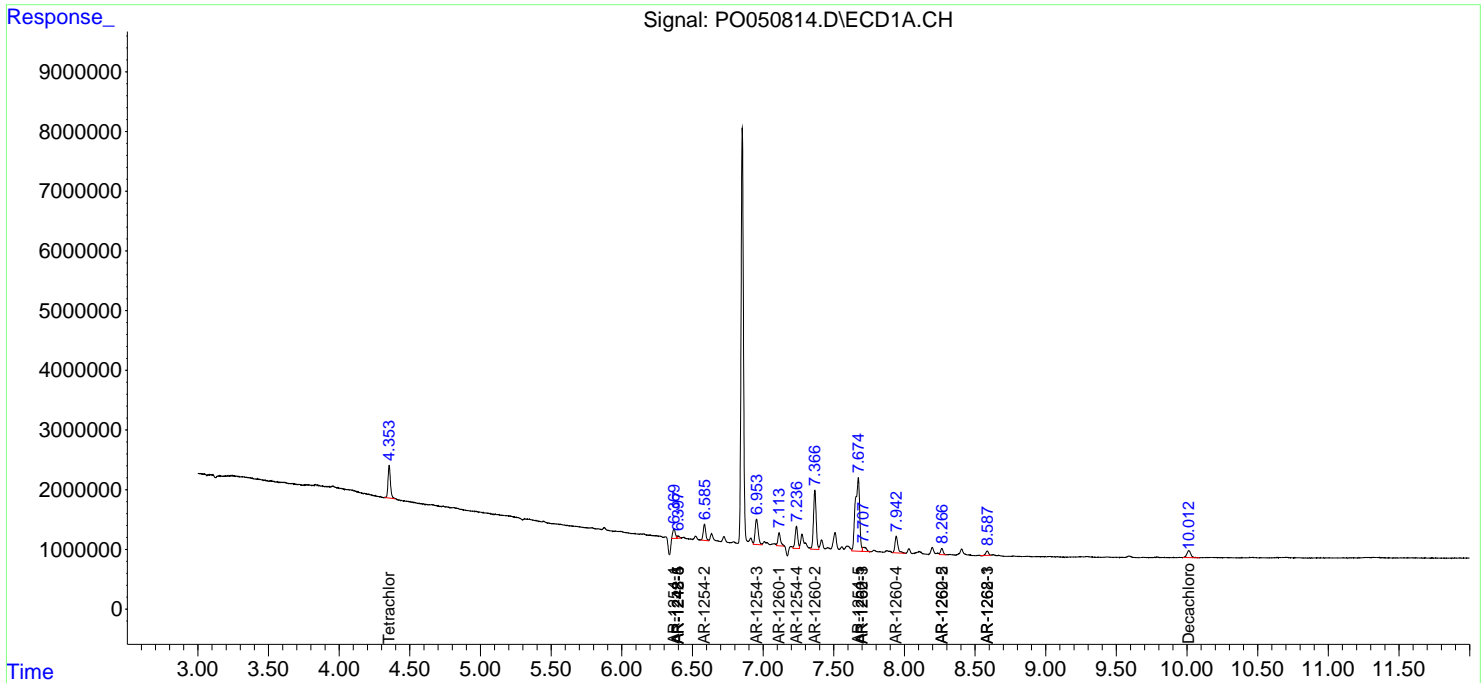
(f)=RT Delta > 1/2 Window (#)=Amounts differ by > 25% (m)=manual int.

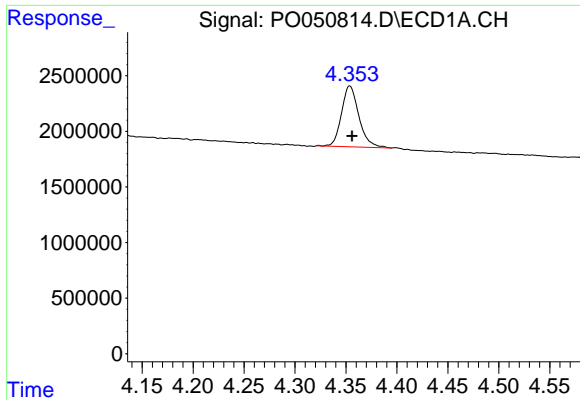
Data Path : Z:\pestpcbsrv\HPCHEM1\ECD_0\Data\PO103118\
 Data File : PO050814.D
 Signal(s) : Signal #1: ECD1A.CH Signal #2: ECD2B.CH
 Acq On : 31 Oct 2018 14:58
 Operator : SM/SJ
 Sample : J5615-19RE
 Misc :
 ALS Vial : 8 Sample Multiplier: 1

Instrument :
 ECD_O
 ClientSampled :

Integration File signal 1: autoint1.e
 Integration File signal 2: autoint2.e
 Quant Time: Nov 01 01:43:06 2018
 Quant Method : Z:\pestpcbsrv\HPCHEM1\ECD_0\methods\PO102918.M
 Quant Title : GC EXTRACTABLES
 QLast Update : Tue Oct 30 07:48:38 2018
 Response via : Initial Calibration
 Integrator: ChemStation 6890 Scale Mode: Small noise peaks clipped

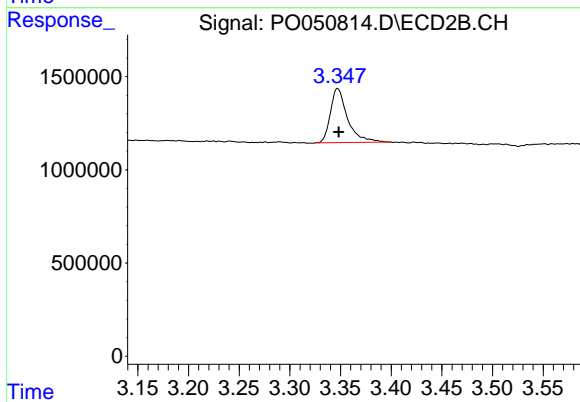
Volume Inj. : 2 µl
 Signal #1 Phase : ZB-MR1 Signal #2 Phase: ZB-MR2
 Signal #1 Info : 30Mx0.32mmx 0.50µ Signal #2 Info : 30M x 0.32mm x 0.25µm



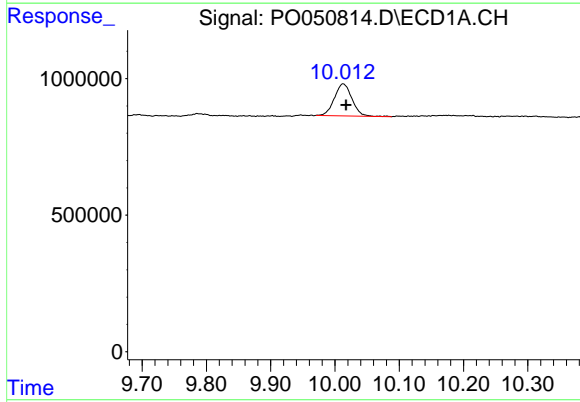


#1 Tetrachloro-m-xylene
 R.T.: 4.354 min
 Delta R.T.: -0.002 min
 Response: 6486910
 Conc: 12.98 ng/ml

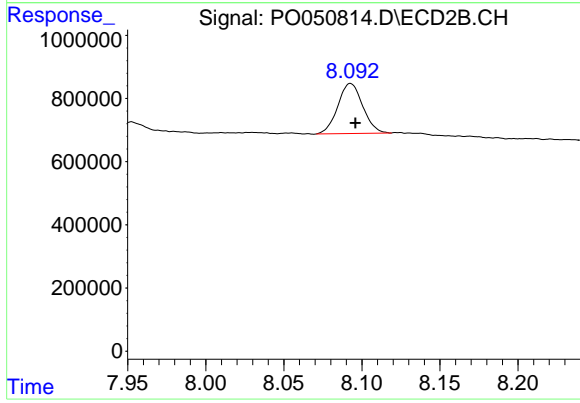
Instrument :
 ECD_O
 ClientSampleId :



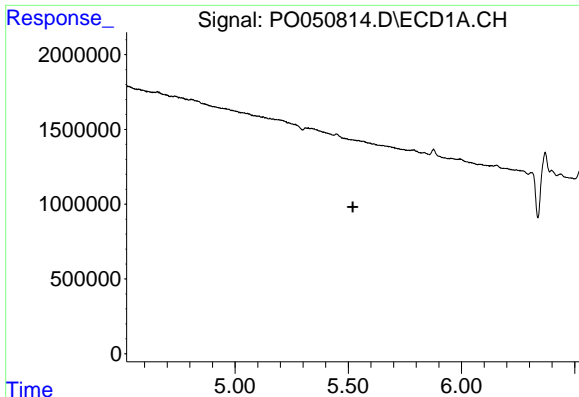
#1 Tetrachloro-m-xylene
 R.T.: 3.347 min
 Delta R.T.: -0.001 min
 Response: 3408415
 Conc: 15.68 ng/ml



#2 Decachlorobiphenyl
 R.T.: 10.013 min
 Delta R.T.: -0.005 min
 Response: 2221984
 Conc: 7.15 ng/ml



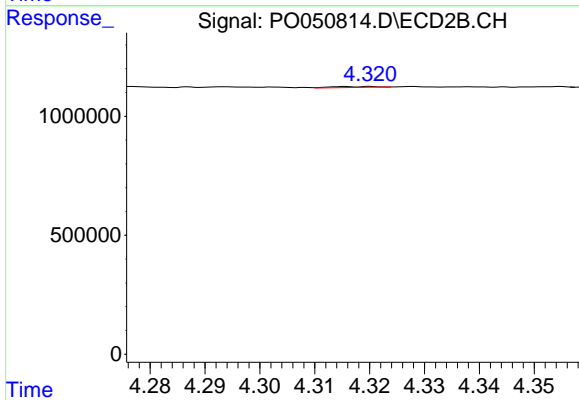
#2 Decachlorobiphenyl
 R.T.: 8.093 min
 Delta R.T.: -0.003 min
 Response: 1766584
 Conc: 6.91 ng/ml



#3 AR-1016-1

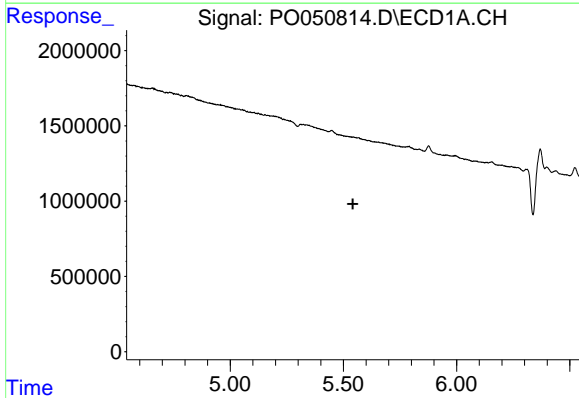
R.T.: 0.000 min
 Exp R.T. : 5.521 min
 Response: 0
 Conc: N.D.

Instrument :
 ECD_O
 ClientSampleId :



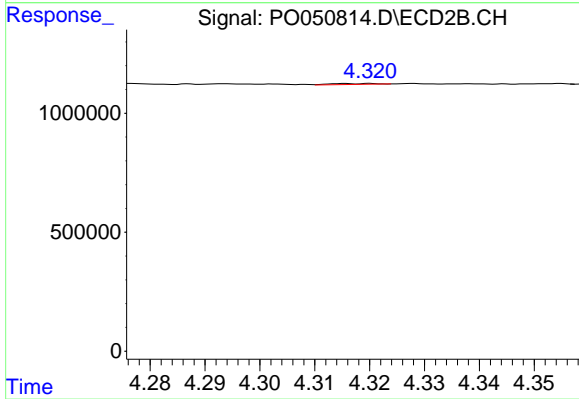
#3 AR-1016-1

R.T.: 4.316 min
 Delta R.T.: -0.050 min
 Response: 22840
 Conc: 2.49 ng/ml



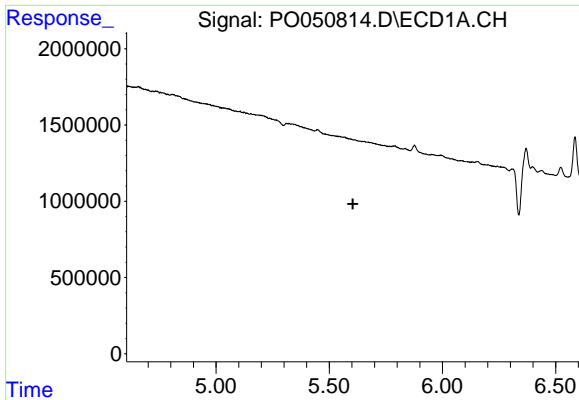
#4 AR-1016-2

R.T.: 0.000 min
 Exp R.T. : 5.542 min
 Response: 0
 Conc: N.D.



#4 AR-1016-2

R.T.: 4.316 min
 Delta R.T.: -0.066 min
 Response: 22840
 Conc: 1.47 ng/ml

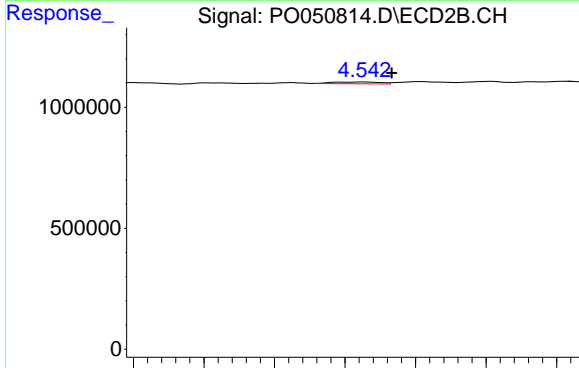


#5 AR-1016-3

R.T.: 0.000 min
 Exp R.T. : 5.604 min
 Response: 0
 Conc: N.D.

Instrument :
 ECD_O
 ClientSampled :

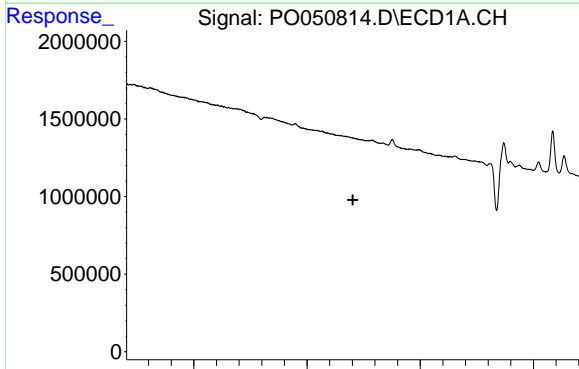
Time 5.00 5.50 6.00 6.50



#5 AR-1016-3

R.T.: 4.543 min
 Delta R.T.: -0.004 min
 Response: 36159
 Conc: 4.51 ng/ml

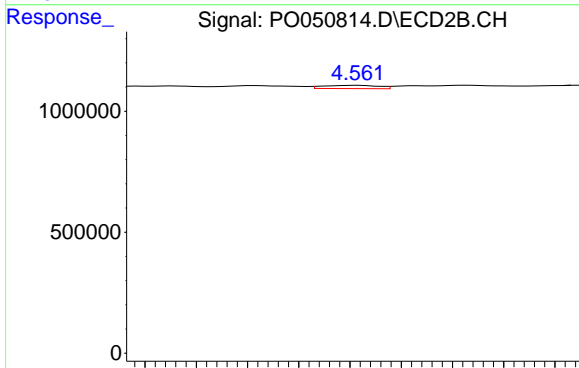
Time 4.51 4.52 4.53 4.54 4.55 4.56 4.57



#6 AR-1016-4

R.T.: 0.000 min
 Exp R.T. : 5.703 min
 Response: 0
 Conc: N.D.

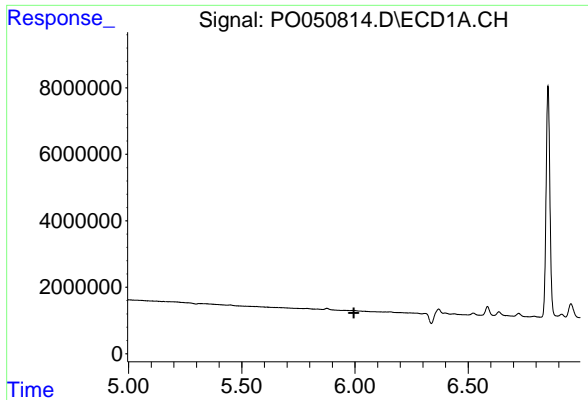
Time 5.00 5.50 6.00 6.50



#6 AR-1016-4

R.T.: 4.561 min
 Delta R.T.: -0.028 min
 Response: 50021
 Conc: 8.22 ng/ml

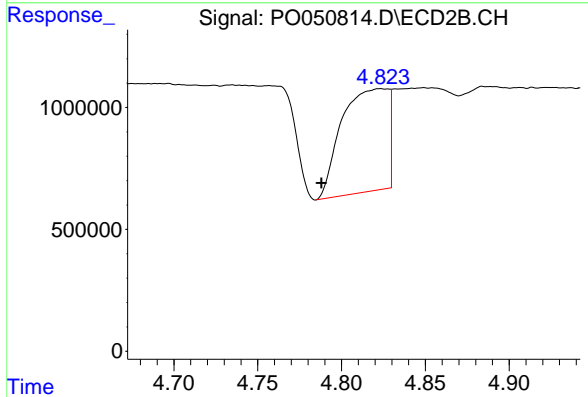
Time 4.54 4.54 4.55 4.55 4.56 4.57 4.57 4.58 4.58



#7 AR-1016-5

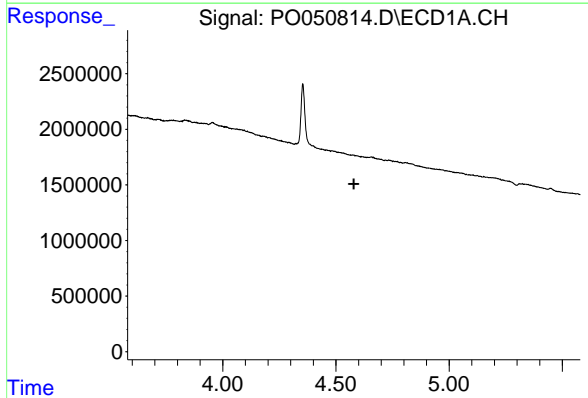
R.T.: 0.000 min
 Exp R.T.: 5.995 min
 Response: 0
 Conc: N.D.

Instrument :
 ECD_O
 ClientSampled :



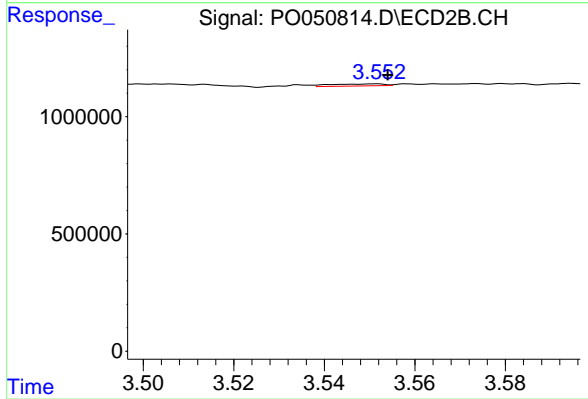
#7 AR-1016-5

R.T.: 4.824 min
 Delta R.T.: 0.036 min
 Response: 8108143
 Conc: 939.58 ng/ml



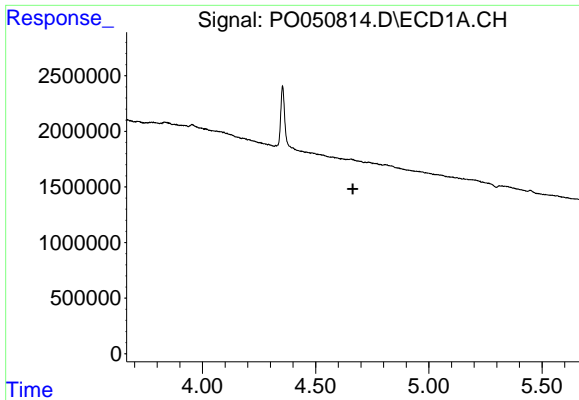
#8 AR-1221-1

R.T.: 0.000 min
 Exp R.T.: 4.579 min
 Response: 0
 Conc: N.D.



#8 AR-1221-1

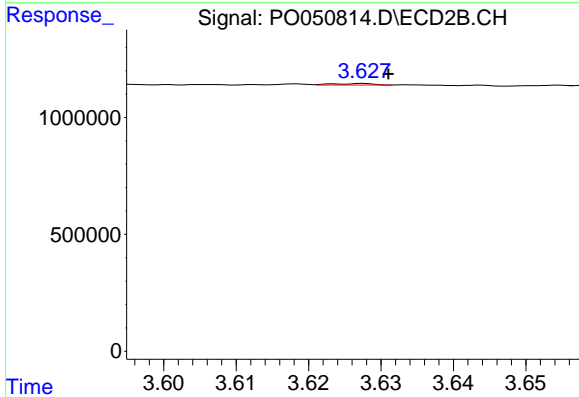
R.T.: 3.552 min
 Delta R.T.: -0.002 min
 Response: 73435
 Conc: 43.44 ng/ml



#9 AR-1221-2

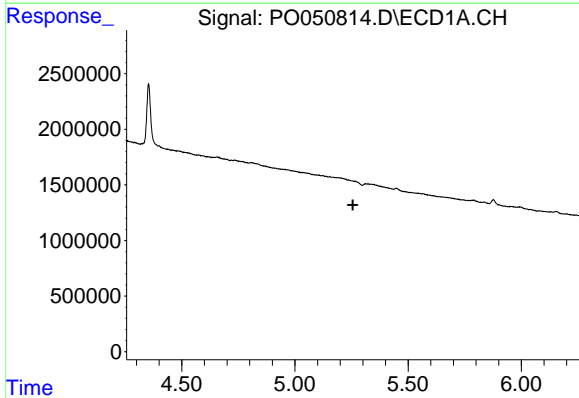
R.T.: 0.000 min
 Exp R.T. : 4.664 min
 Response: 0
 Conc: N.D.

Instrument :
 ECD_O
 ClientSampled :



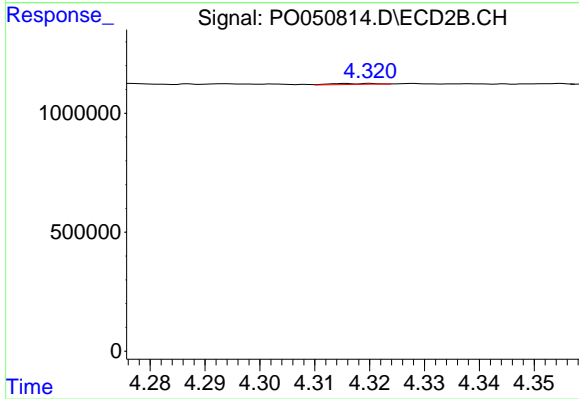
#9 AR-1221-2

R.T.: 3.628 min
 Delta R.T.: -0.003 min
 Response: 25301
 Conc: 19.88 ng/ml



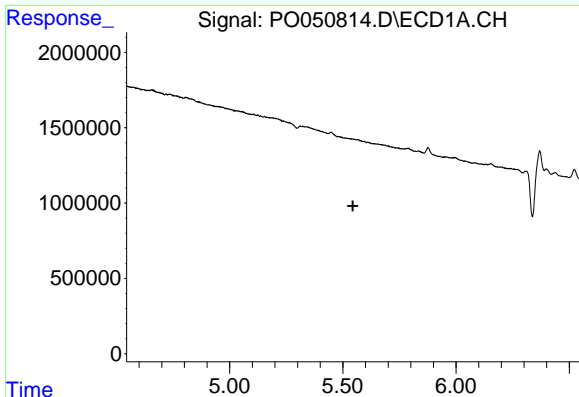
#12 AR-1232-2

R.T.: 0.000 min
 Exp R.T. : 5.256 min
 Response: 0
 Conc: N.D.



#12 AR-1232-2

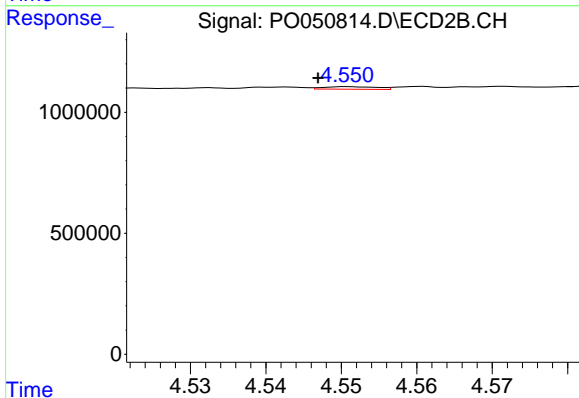
R.T.: 4.316 min
 Delta R.T.: -0.066 min
 Response: 22840
 Conc: 4.77 ng/ml



#13 AR-1232-3

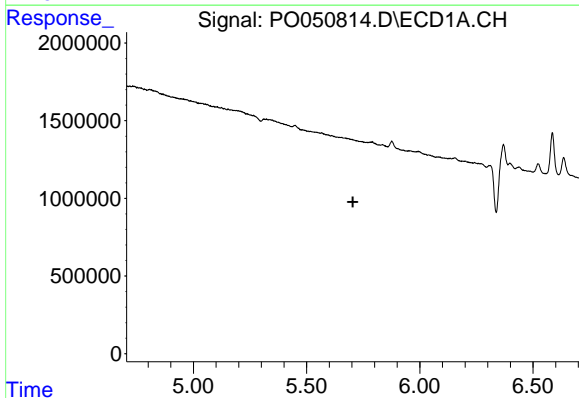
R.T.: 0.000 min
 Exp R.T. : 5.545 min
 Response: 0
 Conc: N.D.

Instrument :
 ECD_O
 ClientSampled :



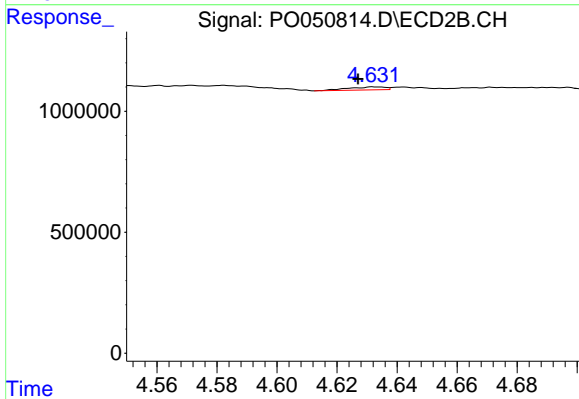
#13 AR-1232-3

R.T.: 4.551 min
 Delta R.T.: 0.004 min
 Response: 52763
 Conc: 20.23 ng/ml



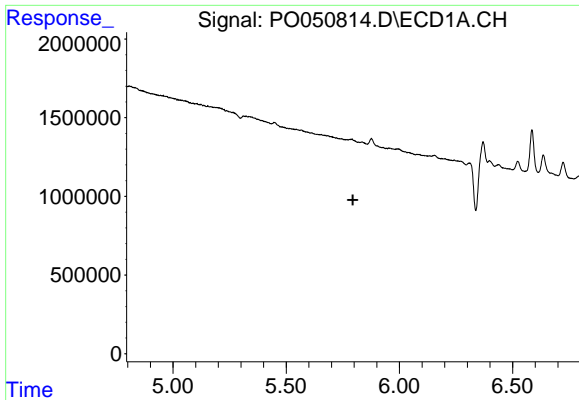
#14 AR-1232-4

R.T.: 0.000 min
 Exp R.T. : 5.705 min
 Response: 0
 Conc: N.D.



#14 AR-1232-4

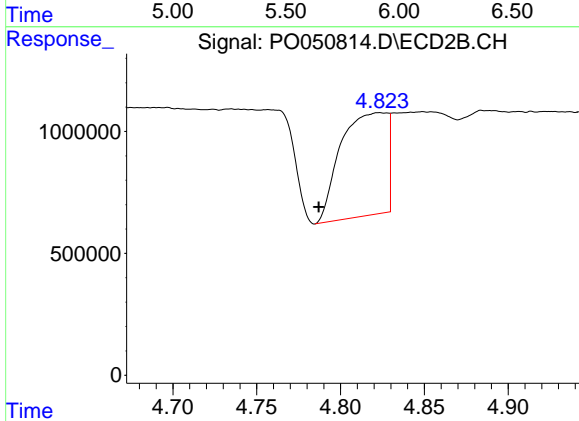
R.T.: 4.632 min
 Delta R.T.: 0.005 min
 Response: 109744
 Conc: 49.23 ng/ml



#15 AR-1232-5

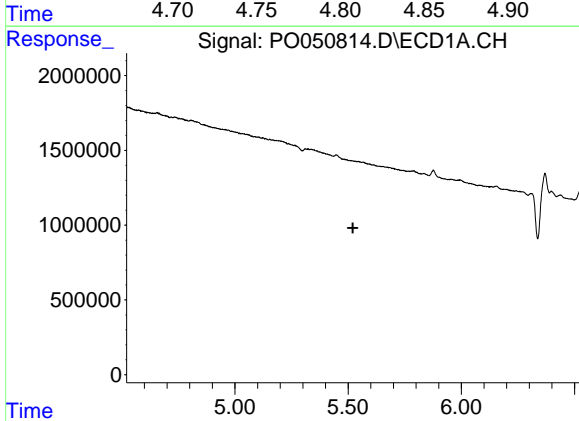
R.T.: 0.000 min
 Exp R.T. : 5.794 min
 Response: 0
 Conc: N.D.

Instrument :
 ECD_O
 ClientSampleId :



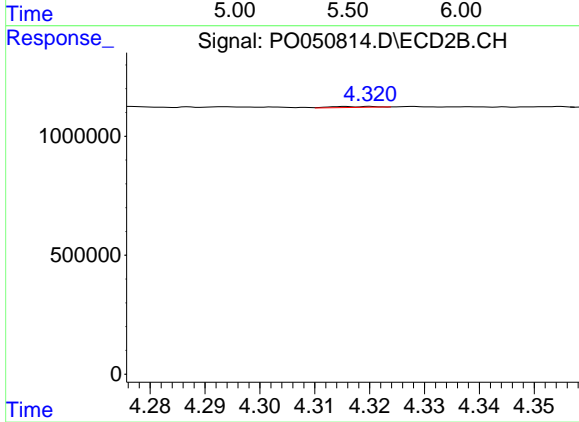
#15 AR-1232-5

R.T.: 4.824 min
 Delta R.T.: 0.037 min
 Response: 8108143
 Conc: 3048.49 ng/ml



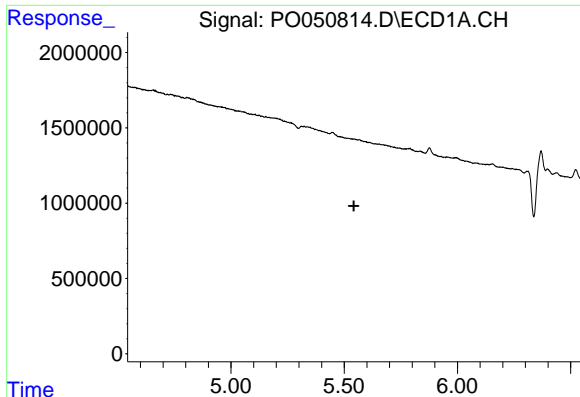
#16 AR-1242-1

R.T.: 0.000 min
 Exp R.T. : 5.521 min
 Response: 0
 Conc: N.D.



#16 AR-1242-1

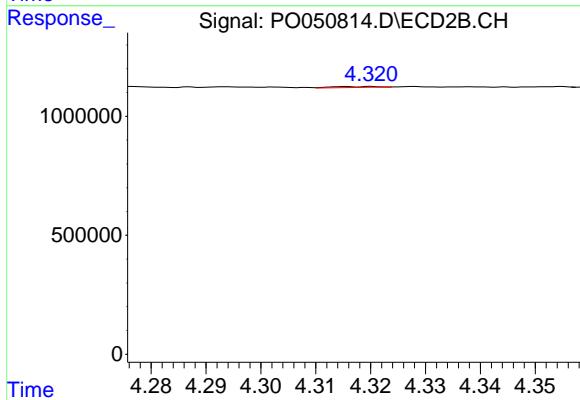
R.T.: 4.316 min
 Delta R.T.: -0.050 min
 Response: 22840
 Conc: 3.89 ng/ml



#17 AR-1242-2

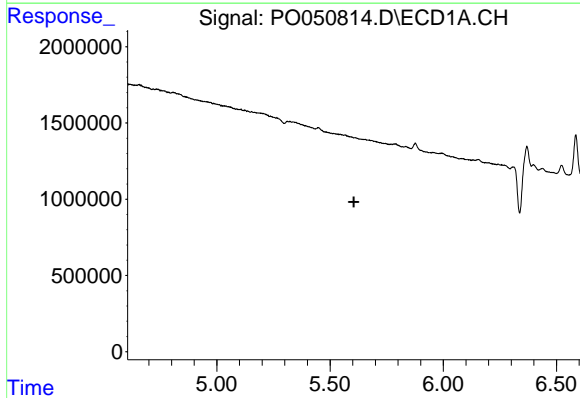
R.T.: 0.000 min
 Exp R.T. : 5.543 min
 Response: 0
 Conc: N.D.

Instrument :
 ECD_O
 ClientSampleId :



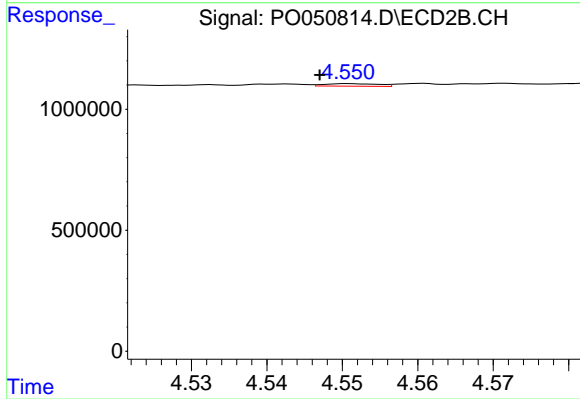
#17 AR-1242-2

R.T.: 4.316 min
 Delta R.T.: -0.067 min
 Response: 22840
 Conc: 2.29 ng/ml



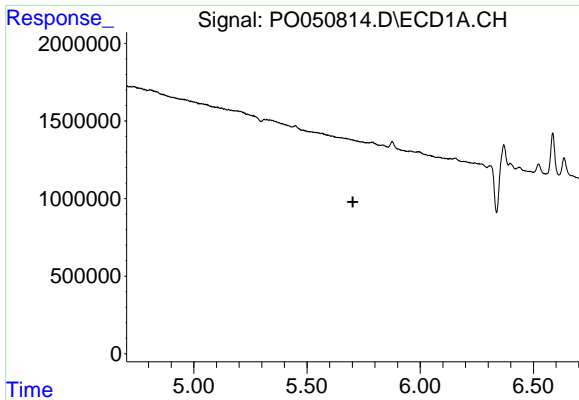
#18 AR-1242-3

R.T.: 0.000 min
 Exp R.T. : 5.605 min
 Response: 0
 Conc: N.D.



#18 AR-1242-3

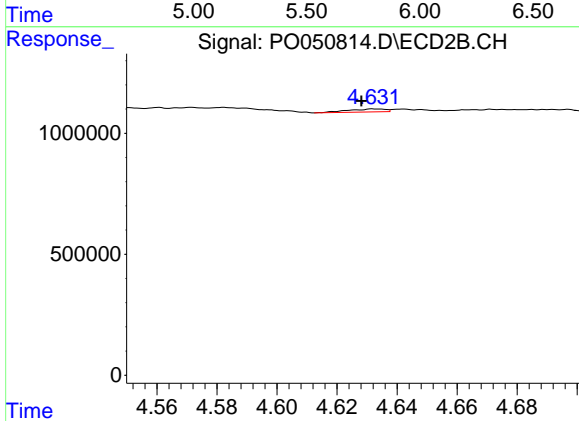
R.T.: 4.551 min
 Delta R.T.: 0.004 min
 Response: 52763
 Conc: 10.45 ng/ml



#19 AR-1242-4

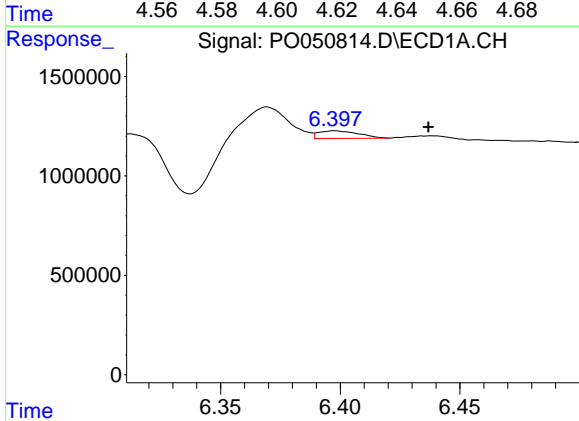
R.T.: 0.000 min
 Exp R.T.: 5.703 min
 Response: 0
 Conc: N.D.

Instrument :
 ECD_O
 ClientSampleId :



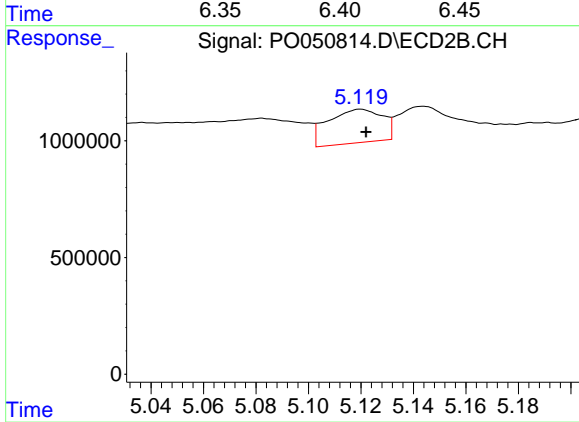
#19 AR-1242-4

R.T.: 4.632 min
 Delta R.T.: 0.004 min
 Response: 109744
 Conc: 22.97 ng/ml



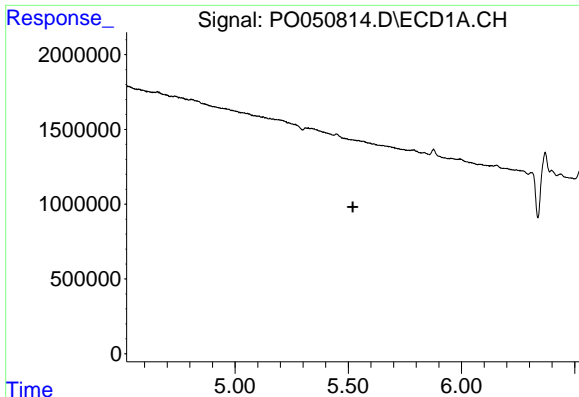
#20 AR-1242-5

R.T.: 6.398 min
 Delta R.T.: -0.039 min
 Response: 441476
 Conc: 47.33 ng/ml



#20 AR-1242-5

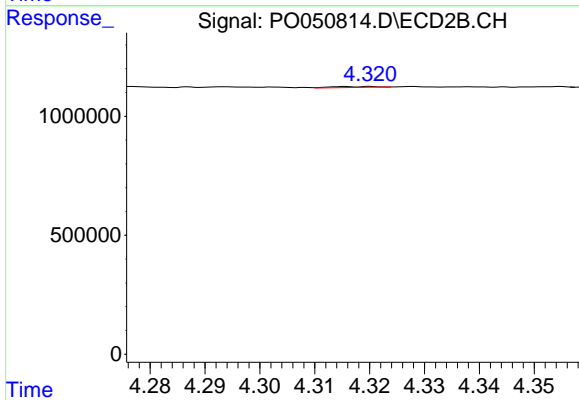
R.T.: 5.120 min
 Delta R.T.: -0.002 min
 Response: 2073370
 Conc: 321.83 ng/ml



#21 AR-1248-1

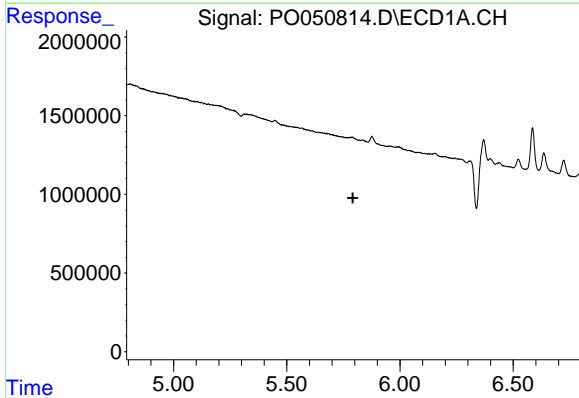
R.T.: 0.000 min
 Exp R.T. : 5.521 min
 Response: 0
 Conc: N.D.

Instrument :
 ECD_O
 ClientSampleId :



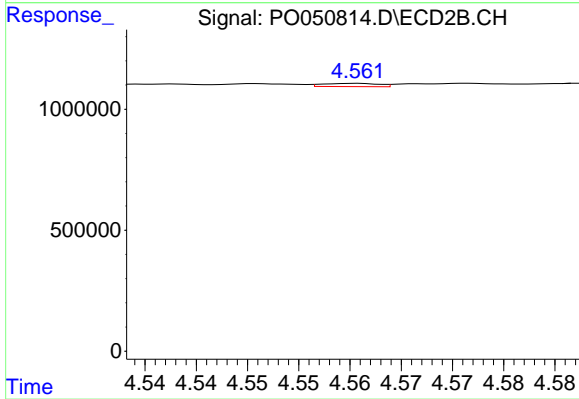
#21 AR-1248-1

R.T.: 4.316 min
 Delta R.T.: -0.050 min
 Response: 22840
 Conc: 4.95 ng/ml



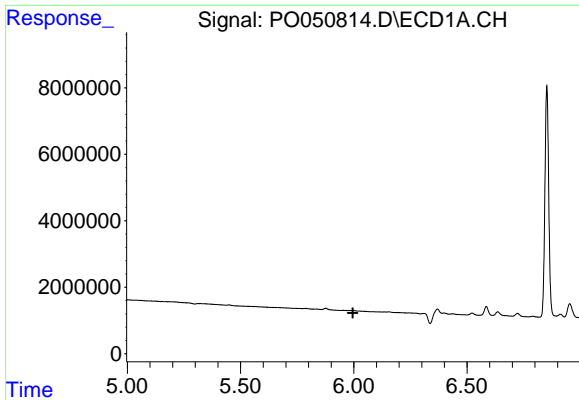
#22 AR-1248-2

R.T.: 0.000 min
 Exp R.T. : 5.792 min
 Response: 0
 Conc: N.D.



#22 AR-1248-2

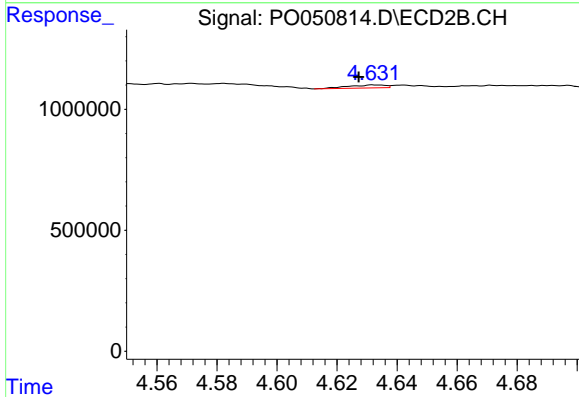
R.T.: 4.561 min
 Delta R.T.: -0.029 min
 Response: 50021
 Conc: 7.18 ng/ml



#23 AR-1248-3

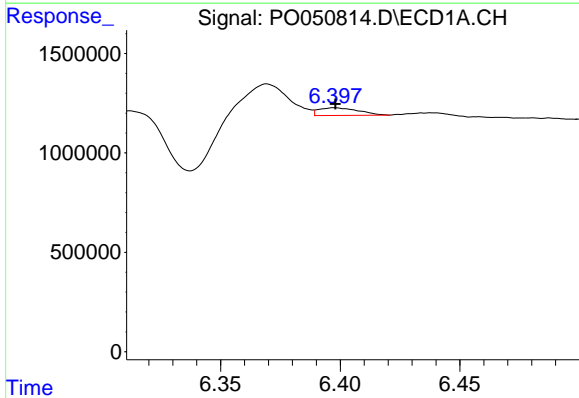
R.T.: 0.000 min
 Exp R.T.: 5.996 min
 Response: 0
 Conc: N.D.

Instrument :
 ECD_O
 ClientSampled :



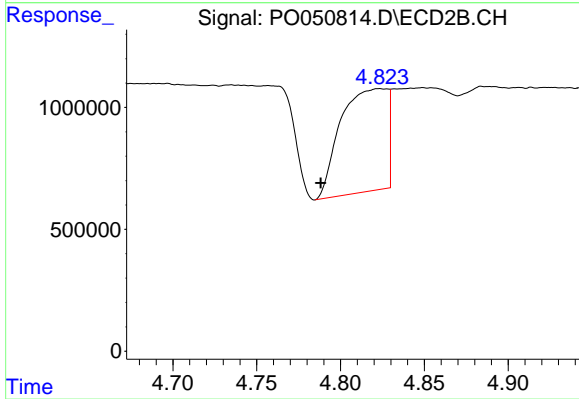
#23 AR-1248-3

R.T.: 4.632 min
 Delta R.T.: 0.005 min
 Response: 109744
 Conc: 15.70 ng/ml



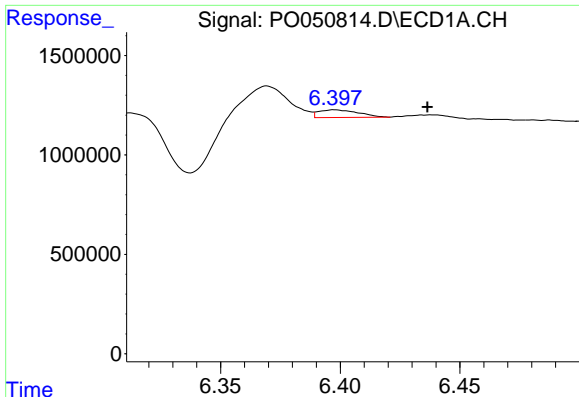
#24 AR-1248-4

R.T.: 6.398 min
 Delta R.T.: 0.000 min
 Response: 441476
 Conc: 26.48 ng/ml



#24 AR-1248-4

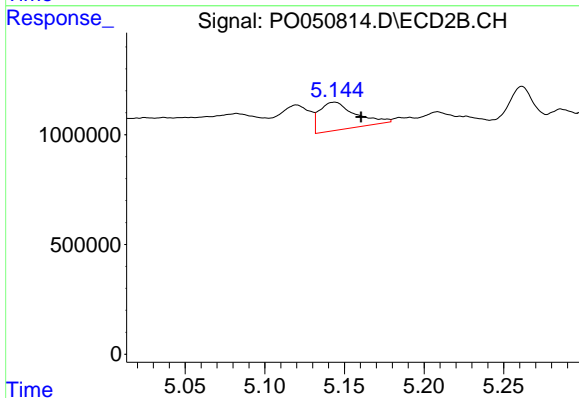
R.T.: 4.824 min
 Delta R.T.: 0.035 min
 Response: 8108143
 Conc: 868.93 ng/ml



#25 AR-1248-5

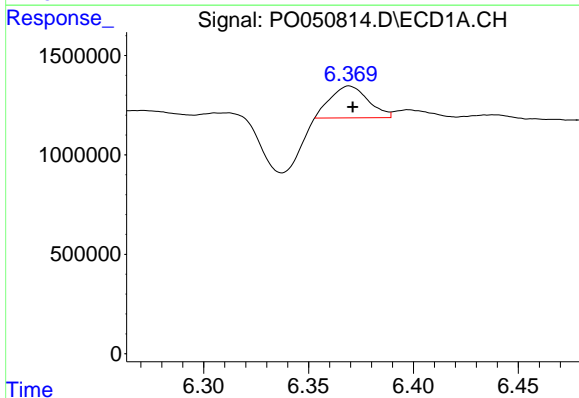
R.T.: 6.398 min
 Delta R.T.: -0.039 min
 Response: 441476
 Conc: 28.28 ng/ml

Instrument :
 ECD_O
 ClientSampleId :



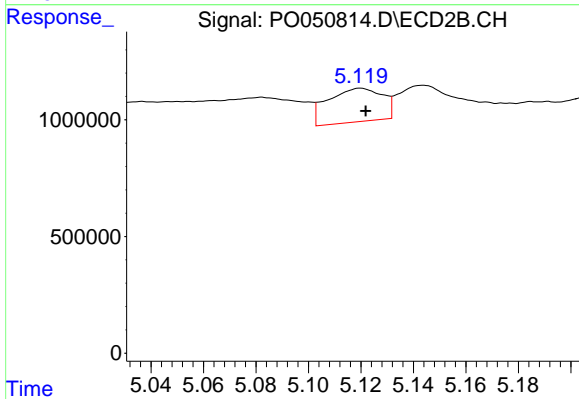
#25 AR-1248-5

R.T.: 5.144 min
 Delta R.T.: -0.016 min
 Response: 2002918
 Conc: 208.32 ng/ml



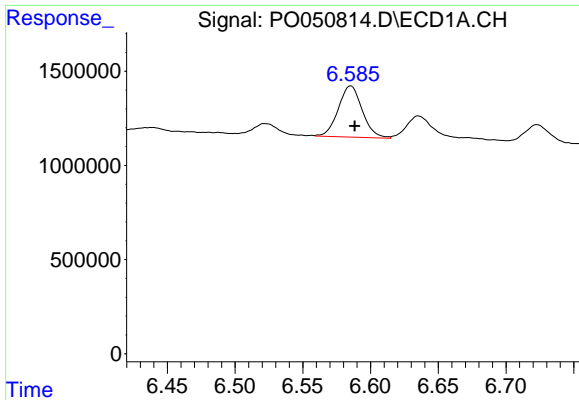
#26 AR-1254-1

R.T.: 6.369 min
 Delta R.T.: -0.002 min
 Response: 2006638
 Conc: 91.38 ng/ml



#26 AR-1254-1

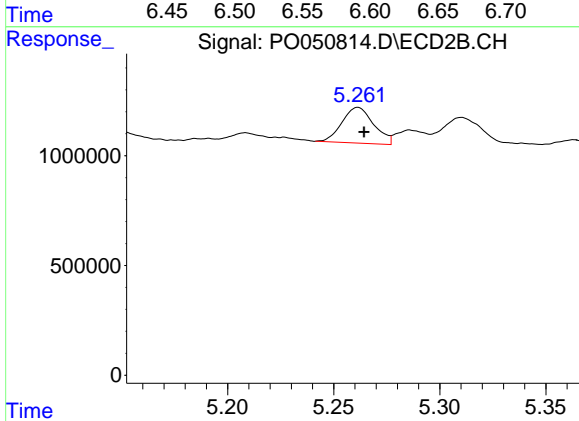
R.T.: 5.120 min
 Delta R.T.: -0.002 min
 Response: 2073370
 Conc: 108.14 ng/ml



#27 AR-1254-2

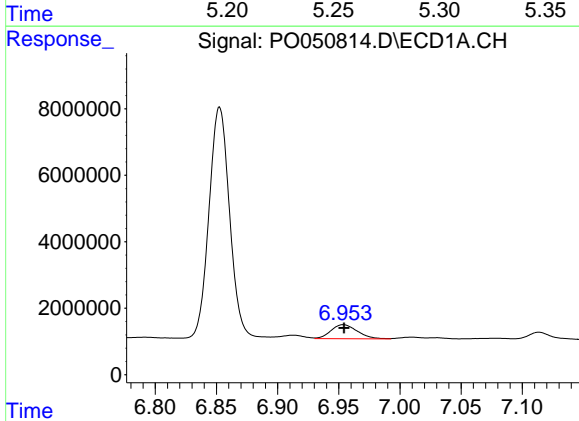
R.T.: 6.585 min
 Delta R.T.: -0.003 min
 Response: 3342036
 Conc: 98.85 ng/ml

Instrument :
 ECD_O
 ClientSampleId :



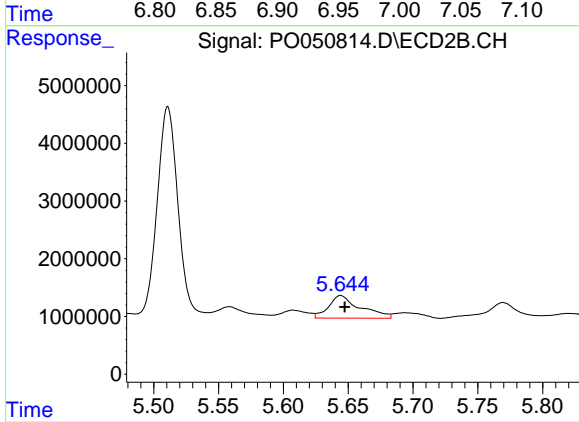
#27 AR-1254-2

R.T.: 5.262 min
 Delta R.T.: -0.003 min
 Response: 1702304
 Conc: 98.06 ng/ml



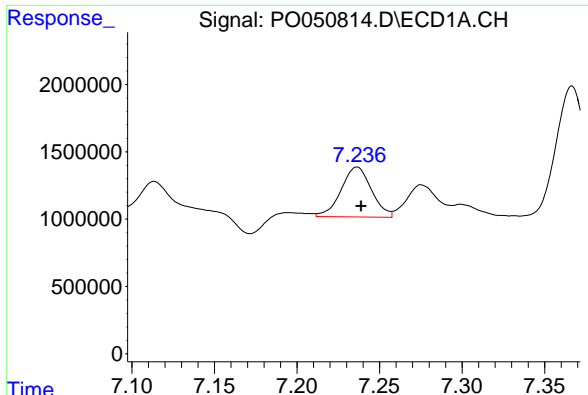
#28 AR-1254-3

R.T.: 6.954 min
 Delta R.T.: 0.000 min
 Response: 6383498
 Conc: 183.31 ng/ml



#28 AR-1254-3

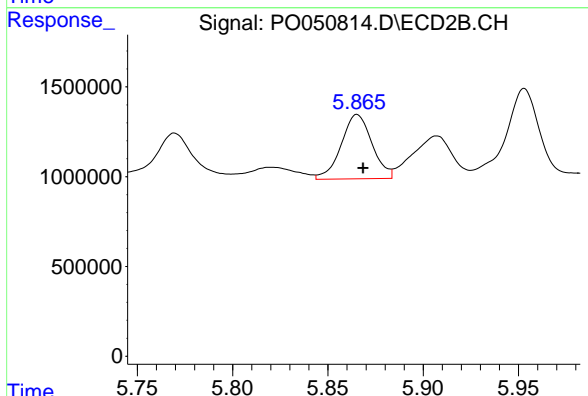
R.T.: 5.644 min
 Delta R.T.: -0.003 min
 Response: 6647959
 Conc: 234.88 ng/ml



#29 AR-1254-4

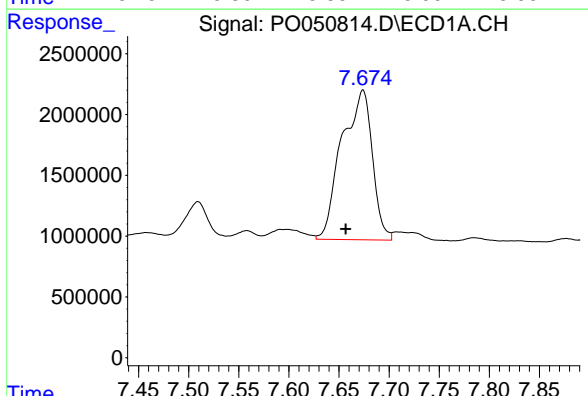
R.T.: 7.236 min
 Delta R.T.: -0.003 min
 Response: 4751652
 Conc: 205.43 ng/ml

Instrument :
 ECD_O
 ClientSampleId :



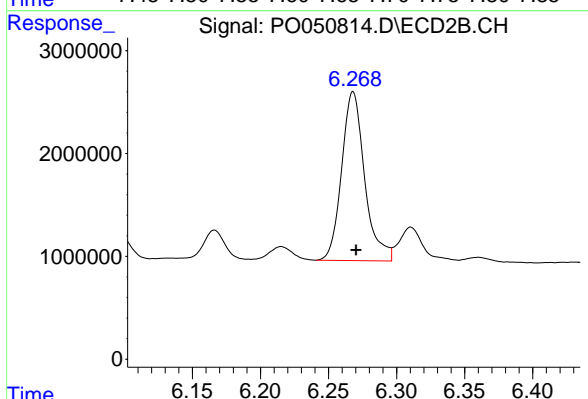
#29 AR-1254-4

R.T.: 5.865 min
 Delta R.T.: -0.003 min
 Response: 4034620
 Conc: 228.26 ng/ml



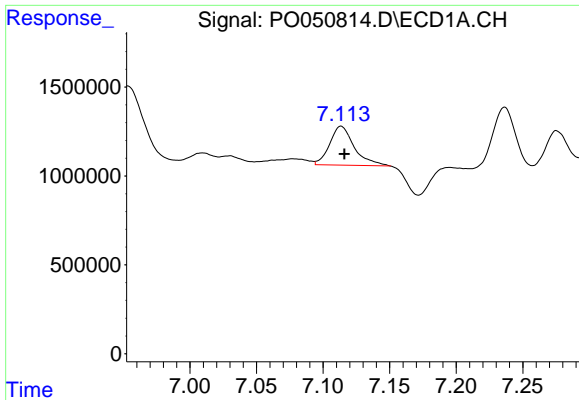
#30 AR-1254-5

R.T.: 7.674 min
 Delta R.T.: 0.017 min
 Response: 26173784
 Conc: 1066.05 ng/ml



#30 AR-1254-5

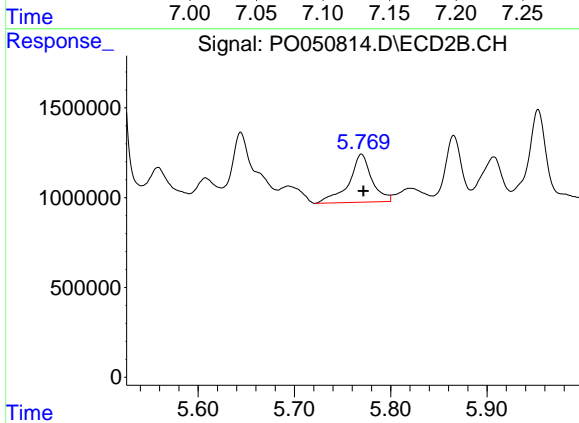
R.T.: 6.268 min
 Delta R.T.: -0.002 min
 Response: 19314652
 Conc: 722.41 ng/ml



#31 AR-1260-1

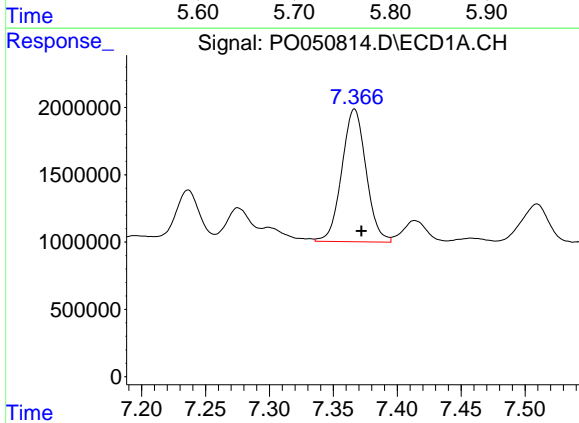
R.T.: 7.114 min
 Delta R.T.: -0.003 min
 Response: 2786619
 Conc: 108.32 ng/ml

Instrument :
 ECD_O
 ClientSampled :



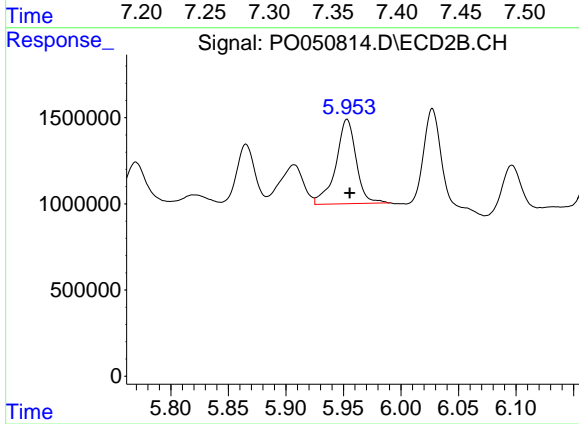
#31 AR-1260-1

R.T.: 5.769 min
 Delta R.T.: -0.002 min
 Response: 4442608
 Conc: 214.87 ng/ml



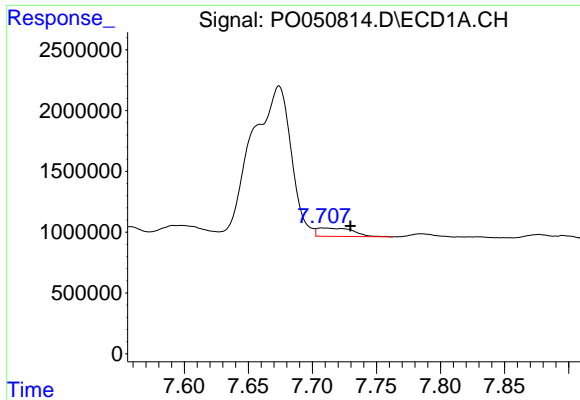
#32 AR-1260-2

R.T.: 7.367 min
 Delta R.T.: -0.005 min
 Response: 13021641
 Conc: 440.18 ng/ml



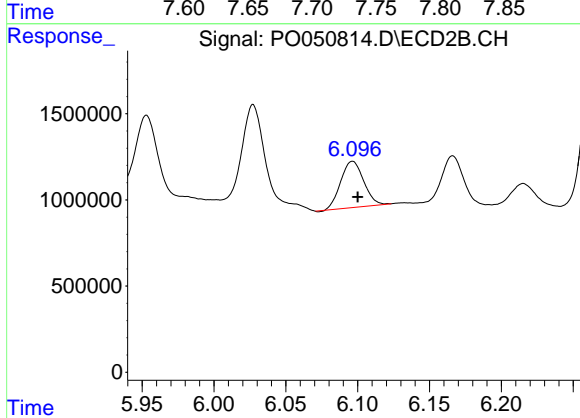
#32 AR-1260-2

R.T.: 5.953 min
 Delta R.T.: -0.002 min
 Response: 6023601
 Conc: 209.77 ng/ml

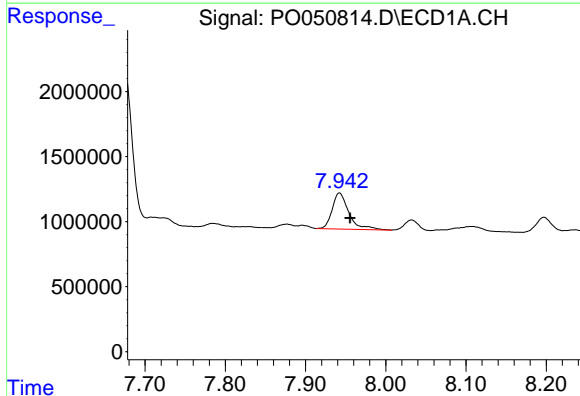


#33 AR-1260-3
 R.T.: 7.708 min
 Delta R.T.: -0.022 min
 Response: 1331802
 Conc: 62.84 ng/ml

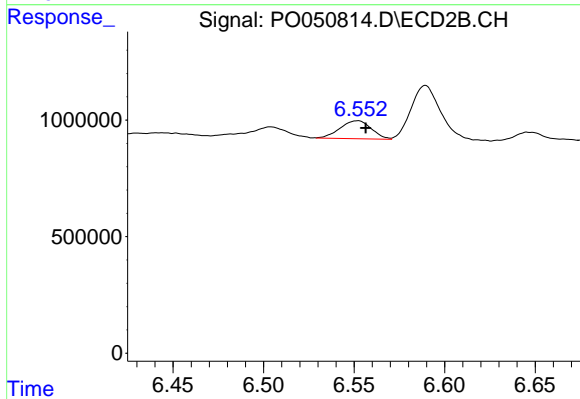
Instrument :
 ECD_O
 ClientSampleId :



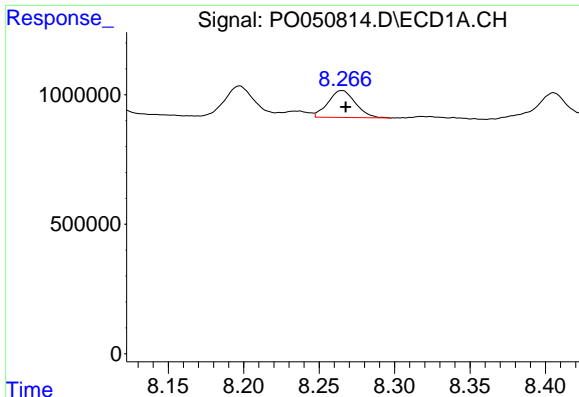
#33 AR-1260-3
 R.T.: 6.097 min
 Delta R.T.: -0.004 min
 Response: 2979963
 Conc: 120.84 ng/ml



#34 AR-1260-4
 R.T.: 7.942 min
 Delta R.T.: -0.013 min
 Response: 4020914
 Conc: 175.72 ng/ml



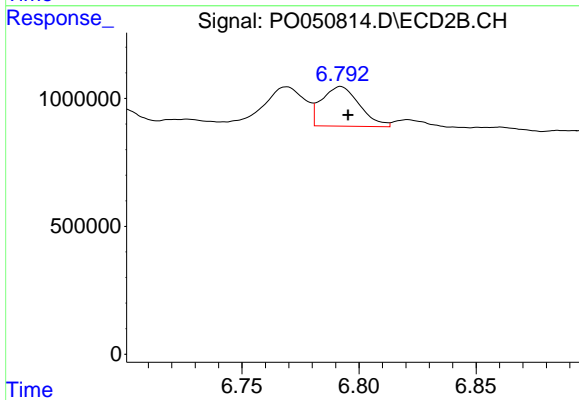
#34 AR-1260-4
 R.T.: 6.552 min
 Delta R.T.: -0.004 min
 Response: 926197
 Conc: 44.91 ng/ml



#35 AR-1260-5

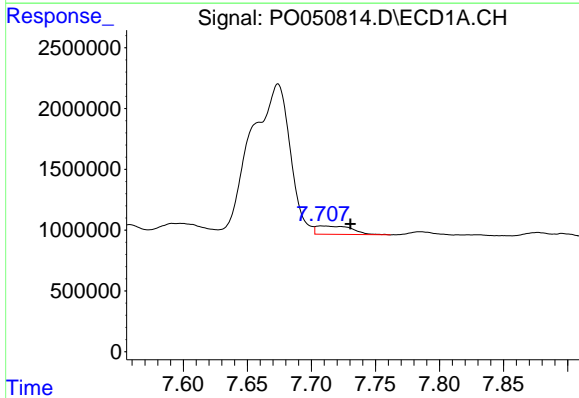
R.T.: 8.265 min
 Delta R.T.: -0.003 min
 Response: 1315836
 Conc: 29.87 ng/ml

Instrument :
 ECD_O
 ClientSampleId :



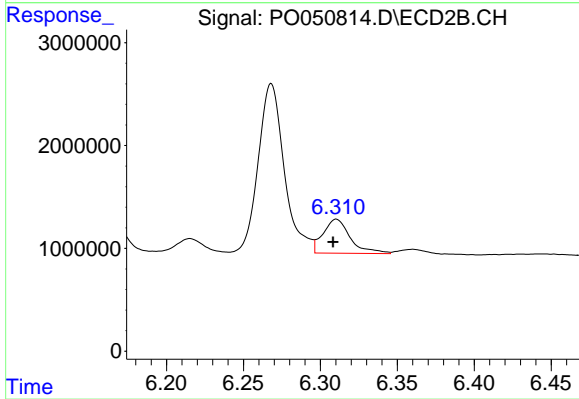
#35 AR-1260-5

R.T.: 6.792 min
 Delta R.T.: -0.003 min
 Response: 1742718
 Conc: 33.54 ng/ml



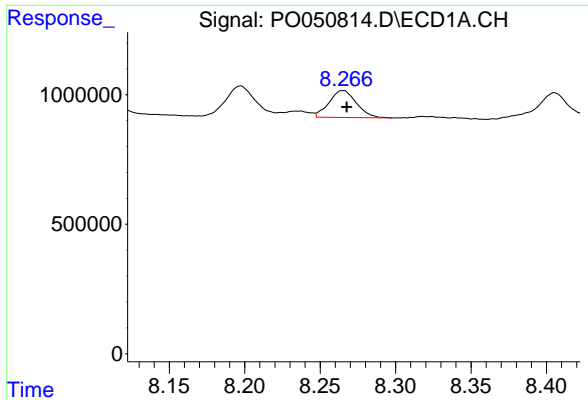
#36 AR-1262-1

R.T.: 7.708 min
 Delta R.T.: -0.023 min
 Response: 1331802
 Conc: 53.98 ng/ml



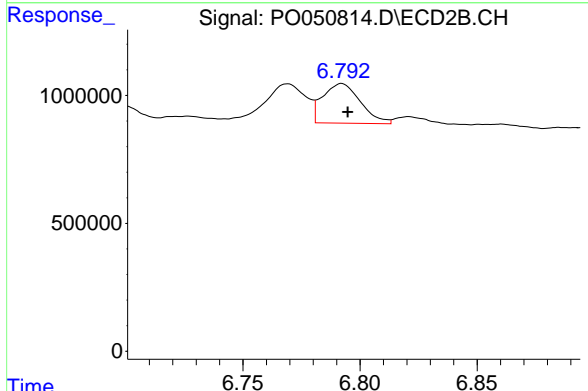
#36 AR-1262-1

R.T.: 6.310 min
 Delta R.T.: 0.002 min
 Response: 4059952
 Conc: 144.28 ng/ml

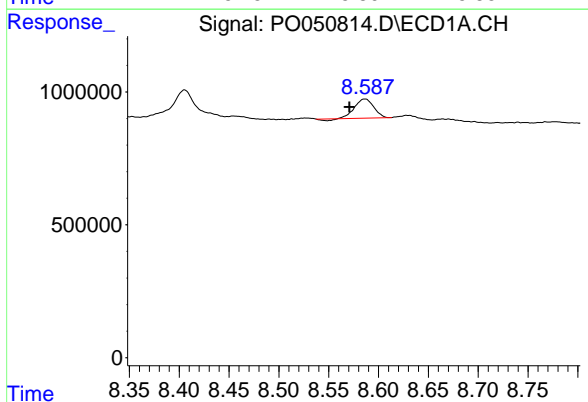


#37 AR-1262-2
 R.T.: 8.265 min
 Delta R.T.: -0.003 min
 Response: 1315836
 Conc: 33.62 ng/ml

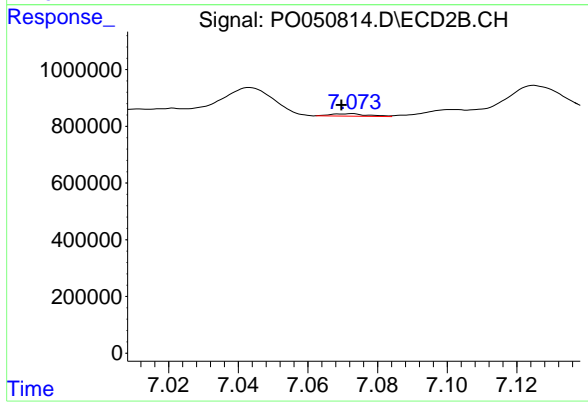
Instrument :
 ECD_O
 ClientSampleId :



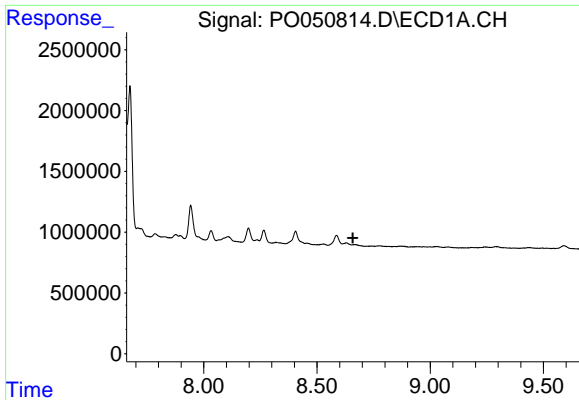
#37 AR-1262-2
 R.T.: 6.792 min
 Delta R.T.: -0.003 min
 Response: 1742718
 Conc: 38.79 ng/ml



#38 AR-1262-3
 R.T.: 8.586 min
 Delta R.T.: 0.016 min
 Response: 942721
 Conc: 37.32 ng/ml



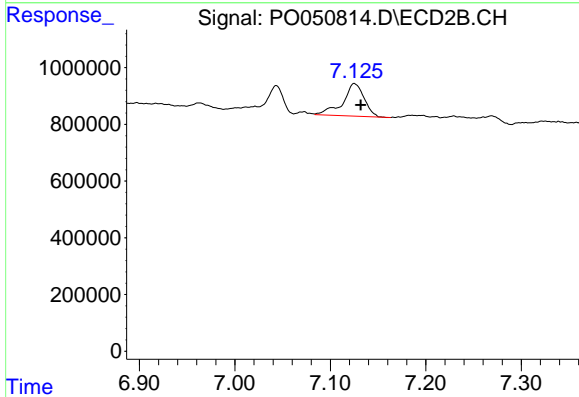
#38 AR-1262-3
 R.T.: 7.072 min
 Delta R.T.: 0.003 min
 Response: 63788
 Conc: 3.55 ng/ml



#39 AR-1262-4

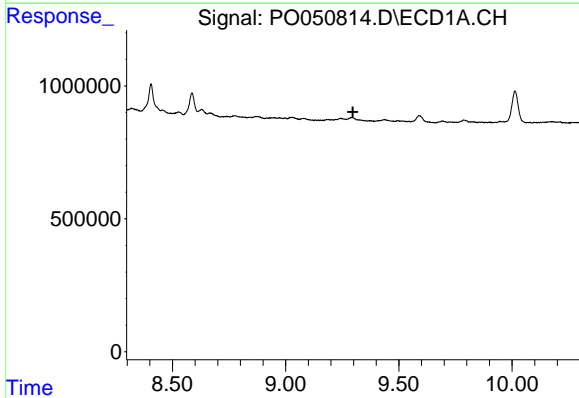
R.T.: 0.000 min
 Exp R.T. : 8.658 min
 Response: 0
 Conc: N.D.

Instrument :
 ECD_O
 ClientSampleId :



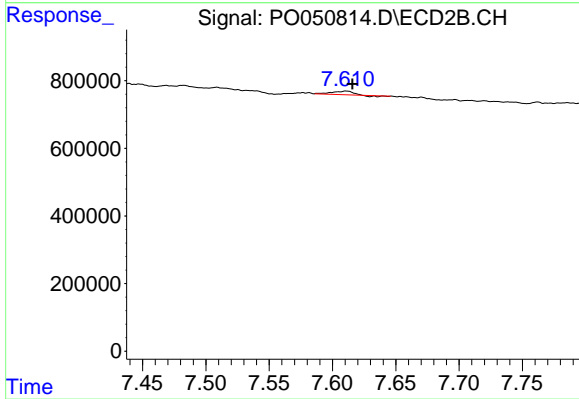
#39 AR-1262-4

R.T.: 7.125 min
 Delta R.T.: -0.007 min
 Response: 1779906
 Conc: 60.50 ng/ml



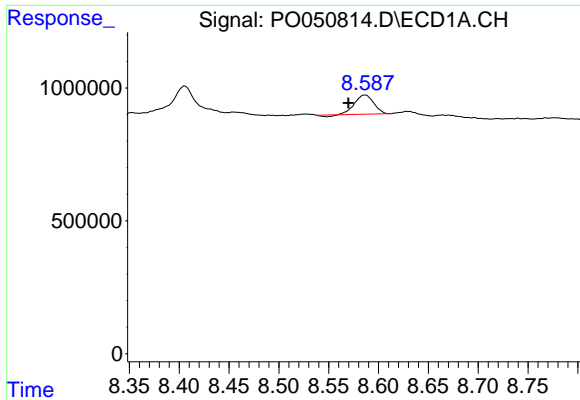
#40 AR-1262-5

R.T.: 0.000 min
 Exp R.T. : 9.297 min
 Response: 0
 Conc: N.D.



#40 AR-1262-5

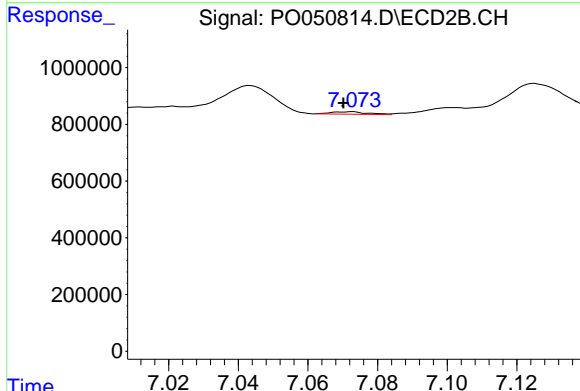
R.T.: 7.611 min
 Delta R.T.: -0.005 min
 Response: 95362
 Conc: 8.22 ng/ml



#41 AR-1268-1

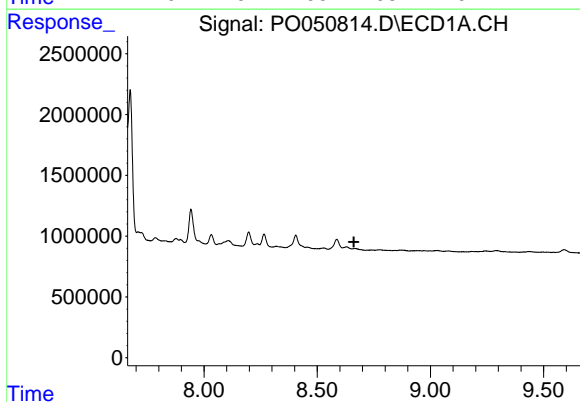
R.T.: 8.586 min
 Delta R.T.: 0.017 min
 Response: 942721
 Conc: 18.69 ng/ml

Instrument :
 ECD_O
 ClientSampled :



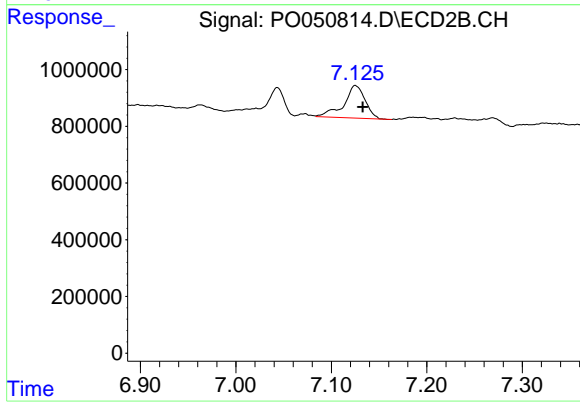
#41 AR-1268-1

R.T.: 7.072 min
 Delta R.T.: 0.002 min
 Response: 63788
 Conc: 1.16 ng/ml



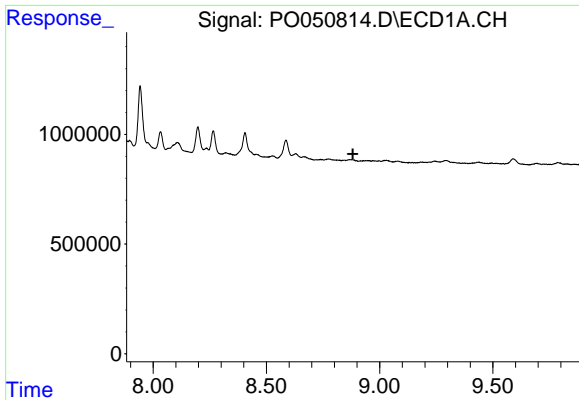
#42 AR-1268-2

R.T.: 0.000 min
 Exp R.T. : 8.662 min
 Response: 0
 Conc: N.D.



#42 AR-1268-2

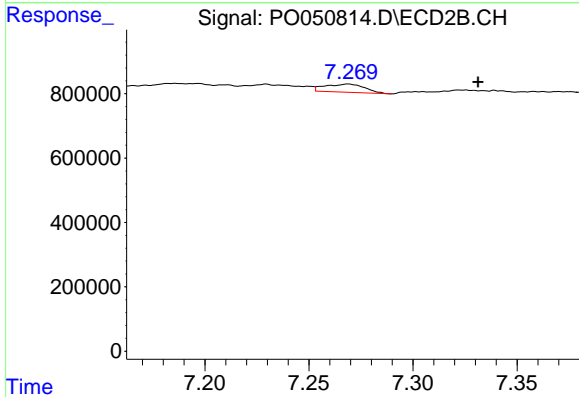
R.T.: 7.125 min
 Delta R.T.: -0.008 min
 Response: 1779906
 Conc: 37.34 ng/ml



#43 AR-1268-3

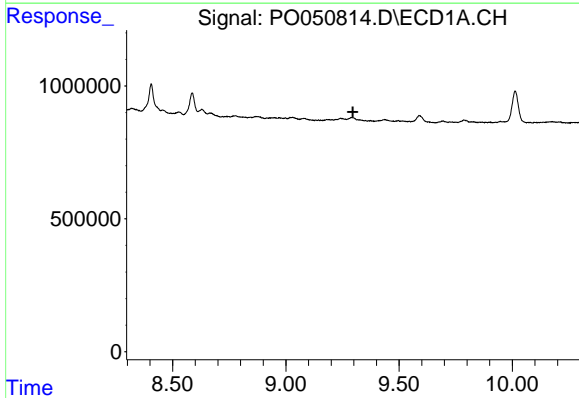
R.T.: 0.000 min
 Exp R.T. : 8.882 min
 Response: 0
 Conc: N.D.

Instrument :
 ECD_O
 ClientSampleId :



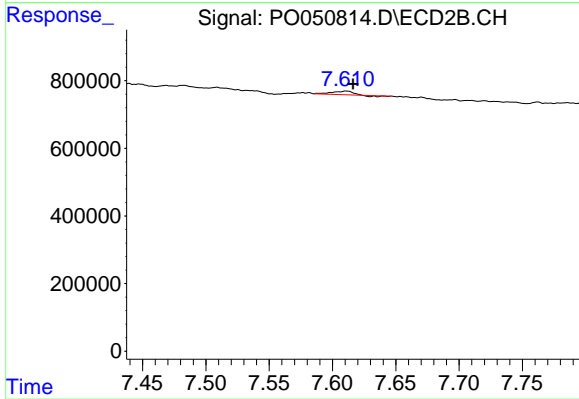
#43 AR-1268-3

R.T.: 7.269 min
 Delta R.T.: -0.062 min
 Response: 334740
 Conc: 7.77 ng/ml



#44 AR-1268-4

R.T.: 0.000 min
 Exp R.T. : 9.296 min
 Response: 0
 Conc: N.D.



#44 AR-1268-4

R.T.: 7.611 min
 Delta R.T.: -0.005 min
 Response: 95362
 Conc: 6.83 ng/ml