

Data Path : Z:\pestpcbsrv\HPCHEM1\ECD\_0\Data\PO103118\  
 Data File : PO050828.D  
 Signal(s) : Signal #1: ECD1A.CH Signal #2: ECD2B.CH  
 Acq On : 31 Oct 2018 19:06  
 Operator : SM/SJ  
 Sample : J5724-06  
 Misc :  
 ALS Vial : 13 Sample Multiplier: 1

Instrument :  
 ECD\_0  
 ClientSampled :

Integration File signal 1: autoint1.e  
 Integration File signal 2: autoint2.e  
 Quant Time: Nov 01 01:46:13 2018  
 Quant Method : Z:\pestpcbsrv\HPCHEM1\ECD\_0\methods\PO102918.M  
 Quant Title : GC EXTRACTABLES  
 QLast Update : Tue Oct 30 07:48:38 2018  
 Response via : Initial Calibration  
 Integrator: ChemStation 6890 Scale Mode: Small noise peaks clipped

Volume Inj. : 2 µl  
 Signal #1 Phase : ZB-MR1 Signal #2 Phase: ZB-MR2  
 Signal #1 Info : 30Mx0.32mmx 0.50µ Signal #2 Info : 30M x 0.32mm x 0.25µm

Compound	RT#1	RT#2	Resp#1	Resp#2	ng/ml	ng/ml
System Monitoring Compounds						
1) SA Tetrachlo...	4.353	3.347	2896341	1338104	5.794	6.156
2) SA Decachlor...	10.010	8.092	638941	625519	2.056	2.445
Target Compounds						
3) L1 AR-1016-1	0.000	4.368	0	240885	N.D.	26.213 #
4) L1 AR-1016-2	0.000	4.368	0	240885	N.D.	15.545 #
5) L1 AR-1016-3	0.000	4.574	0	79521	N.D.	9.928 #
6) L1 AR-1016-4	0.000	4.583	0	299424	N.D.	49.209 #
7) L1 AR-1016-5	0.000	4.808	0	1365951	N.D.	158.288 #
8) L2 AR-1221-1	0.000	3.558	0	27240	N.D.	16.115 #
9) L2 AR-1221-2	0.000	3.610	0	31953	N.D.	25.108 #
10) L2 AR-1221-3	0.000	3.730	0	13529	N.D.	3.164 #
11) L3 AR-1232-1	0.000	3.730	0	13529	N.D.	3.384 #
12) L3 AR-1232-2	5.320	4.368	1095301	240885	235.052	50.356 #
13) L3 AR-1232-3	0.000	4.574	0	79521	N.D.	30.495 #
14) L3 AR-1232-4	0.000	4.625	0	376426	N.D.	168.857 #
15) L3 AR-1232-5	0.000	4.808	0	1365951	N.D.	513.569 #
16) L4 AR-1242-1	0.000	4.368	0	240885	N.D.	41.045 #
17) L4 AR-1242-2	0.000	4.368	0	240885	N.D.	24.112 #
18) L4 AR-1242-3	0.000	4.574	0	79521	N.D.	15.748 #
19) L4 AR-1242-4	0.000	4.625	0	376426	N.D.	78.800 #
20) L4 AR-1242-5	0.000	5.128	0	2293396	N.D.	355.979 #
21) L5 AR-1248-1	0.000	4.368	0	240885	N.D.	52.213 #
22) L5 AR-1248-2	0.000	4.583	0	299424	N.D.	42.991 #
23) L5 AR-1248-3	0.000	4.625	0	376426	N.D.	53.851 #
24) L5 AR-1248-4	0.000	4.808	0	1365951	N.D.	146.386 #
25) L5 AR-1248-5	0.000	5.163	0	956381	N.D.	99.470 #
26) L6 AR-1254-1	0.000	5.128	0	2293396	N.D.	119.611 #
27) L6 AR-1254-2	6.567	5.259	2487722	844634	73.579	48.656 #
28) L6 AR-1254-3	6.959	5.640	308415	2790841	8.857	98.602 #
29) L6 AR-1254-4	0.000	5.896	0	1236986	N.D.	69.984 #
30) L6 AR-1254-5	0.000	6.264	0	408070	N.D.	15.263 #
31) L7 AR-1260-1	0.000	5.763	0	2968032	N.D.	143.551 #
32) L7 AR-1260-2	0.000	5.941	0	1262795	N.D.	43.976 #
33) L7 AR-1260-3	0.000	6.089	0	184238	N.D.	7.471 #
34) L7 AR-1260-4	0.000	6.586	0	99001	N.D.	4.800 #
36) L8 AR-1262-1	0.000	6.309	0	99969	N.D.	3.553 #
38) L8 AR-1262-3	0.000	7.126	0	107112	N.D.	5.966 #
39) L8 AR-1262-4	0.000	7.126	0	107112	N.D.	3.641 #
41) L9 AR-1268-1	0.000	7.126	0	107112	N.D.	1.945 #
42) L9 AR-1268-2	0.000	7.126	0	107112	N.D.	2.247 #

Data Path : Z:\pestpcbsrv\HPCHEM1\ECD\_0\Data\PO103118\  
Data File : PO050828.D  
Signal(s) : Signal #1: ECD1A.CH Signal #2: ECD2B.CH  
Acq On : 31 Oct 2018 19:06  
Operator : SM/SJ  
Sample : J5724-06  
Misc :  
ALS Vial : 13 Sample Multiplier: 1

Instrument :  
ECD\_0  
ClientSampleId :

Integration File signal 1: autoint1.e  
Integration File signal 2: autoint2.e  
Quant Time: Nov 01 01:46:13 2018  
Quant Method : Z:\pestpcbsrv\HPCHEM1\ECD\_0\methods\PO102918.M  
Quant Title : GC EXTRACTABLES  
QLast Update : Tue Oct 30 07:48:38 2018  
Response via : Initial Calibration  
Integrator: ChemStation 6890 Scale Mode: Small noise peaks clipped

Volume Inj. : 2 µl  
Signal #1 Phase : ZB-MR1 Signal #2 Phase: ZB-MR2  
Signal #1 Info : 30Mx0.32mmx 0.50µ Signal #2 Info : 30M x 0.32mm x 0.25µm

Compound	RT#1	RT#2	Resp#1	Resp#2	ng/ml	ng/ml
----------	------	------	--------	--------	-------	-------

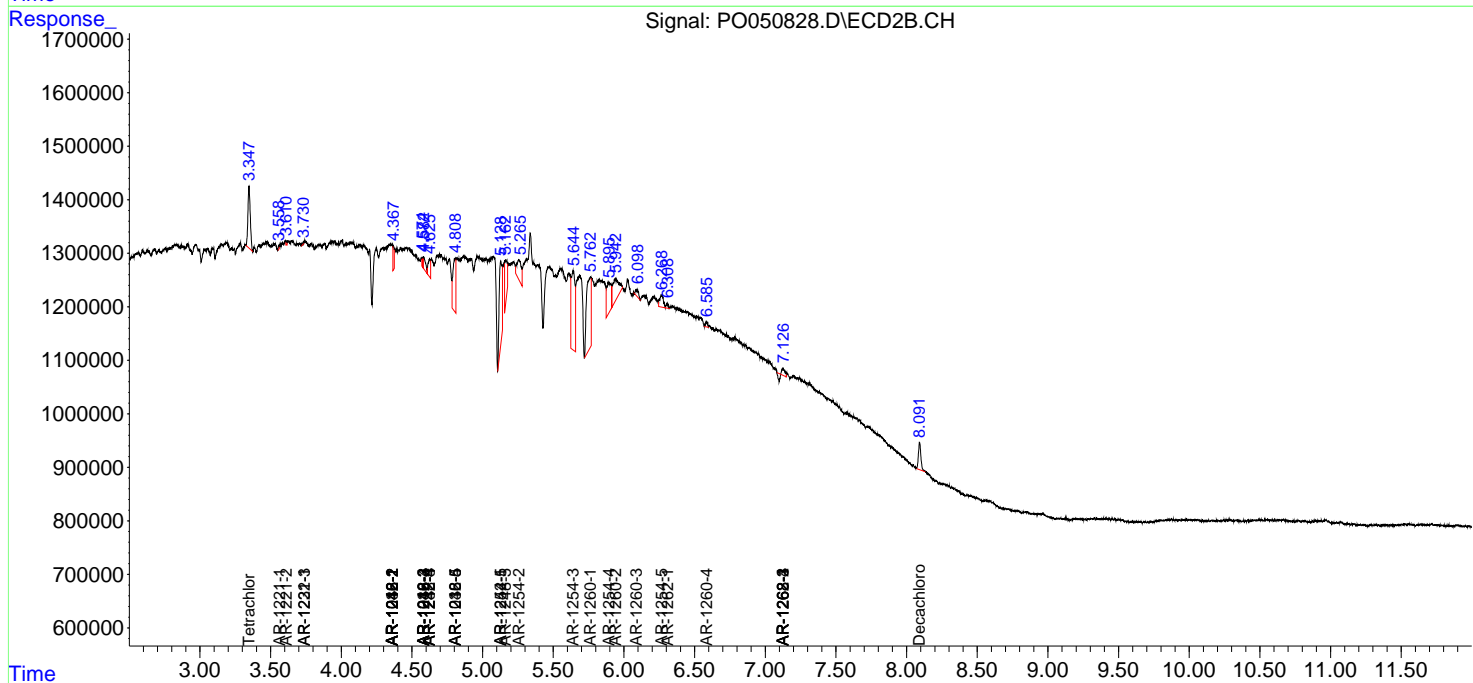
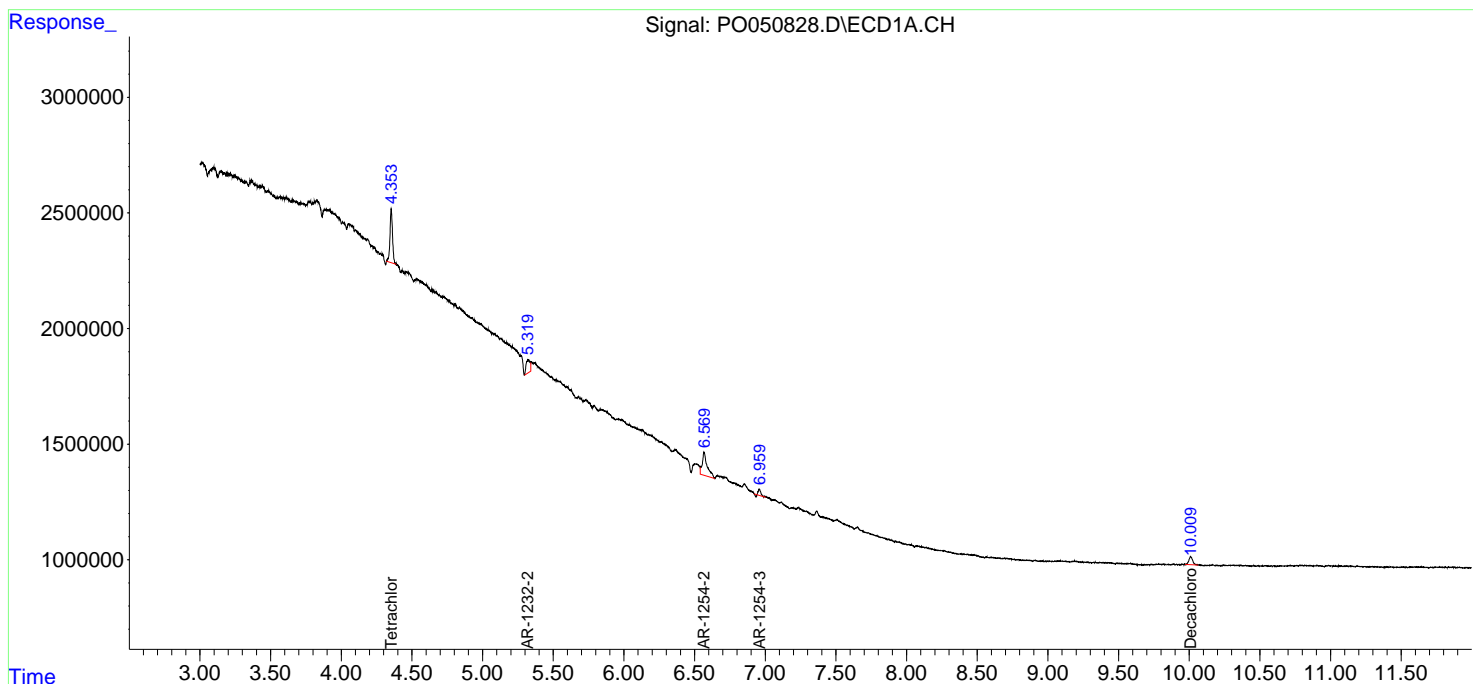
-----  
(f)=RT Delta > 1/2 Window (#)=Amounts differ by > 25% (m)=manual int.

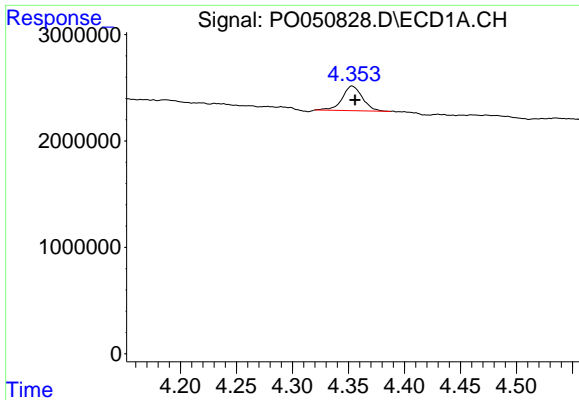
Data Path : Z:\pestpcbsrv\HPCHEM1\ECD\_O\Data\PO103118\  
 Data File : PO050828.D  
 Signal(s) : Signal #1: ECD1A.CH Signal #2: ECD2B.CH  
 Acq On : 31 Oct 2018 19:06  
 Operator : SM/SJ  
 Sample : J5724-06  
 Misc :  
 ALS Vial : 13 Sample Multiplier: 1

Instrument :  
 ECD\_O  
 ClientSampled :

Integration File signal 1: autoint1.e  
 Integration File signal 2: autoint2.e  
 Quant Time: Nov 01 01:46:13 2018  
 Quant Method : Z:\pestpcbsrv\HPCHEM1\ECD\_O\methods\PO102918.M  
 Quant Title : GC EXTRACTABLES  
 QLast Update : Tue Oct 30 07:48:38 2018  
 Response via : Initial Calibration  
 Integrator: ChemStation 6890 Scale Mode: Small noise peaks clipped

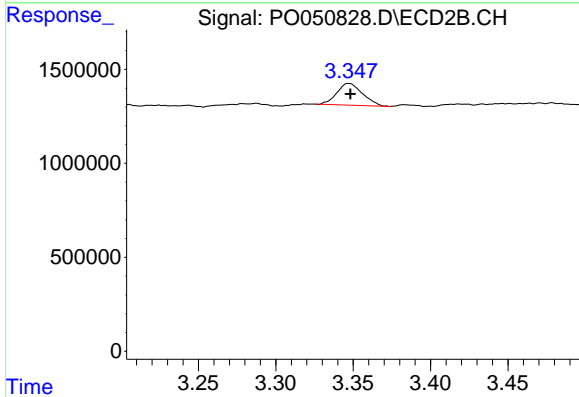
Volume Inj. : 2 µl  
 Signal #1 Phase : ZB-MR1 Signal #2 Phase: ZB-MR2  
 Signal #1 Info : 30Mx0.32mmx 0.50µ Signal #2 Info : 30M x 0.32mm x 0.25µm



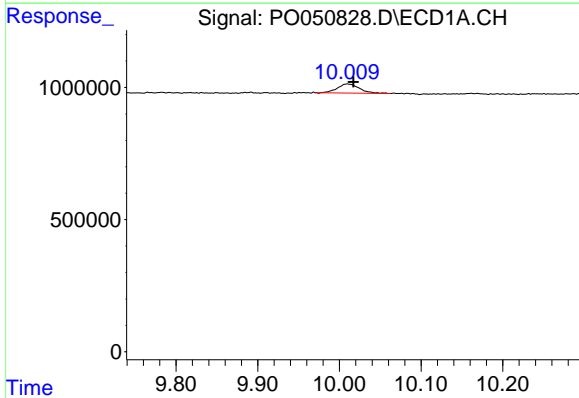


#1 Tetrachloro-m-xylene  
 R.T.: 4.353 min  
 Delta R.T.: -0.003 min  
 Response: 2896341  
 Conc: 5.79 ng/ml

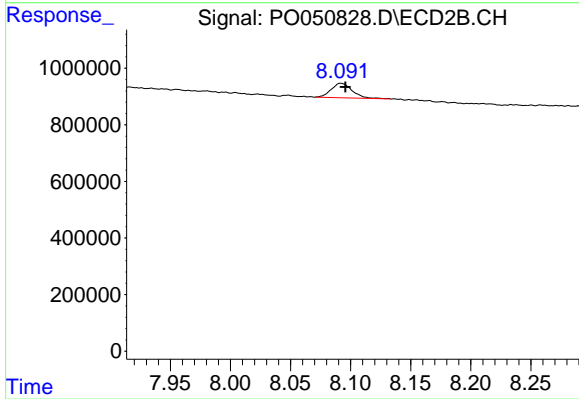
Instrument :  
 ECD\_O  
 ClientSampleId :



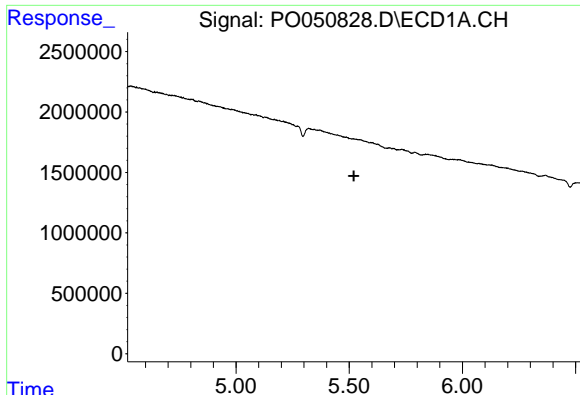
#1 Tetrachloro-m-xylene  
 R.T.: 3.347 min  
 Delta R.T.: -0.001 min  
 Response: 1338104  
 Conc: 6.16 ng/ml



#2 Decachlorobiphenyl  
 R.T.: 10.010 min  
 Delta R.T.: -0.008 min  
 Response: 638941  
 Conc: 2.06 ng/ml



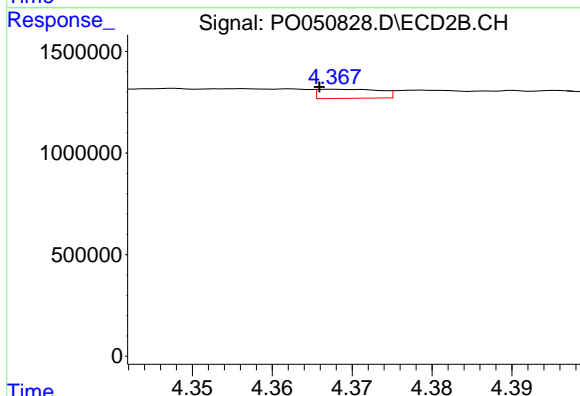
#2 Decachlorobiphenyl  
 R.T.: 8.092 min  
 Delta R.T.: -0.004 min  
 Response: 625519  
 Conc: 2.45 ng/ml



#3 AR-1016-1

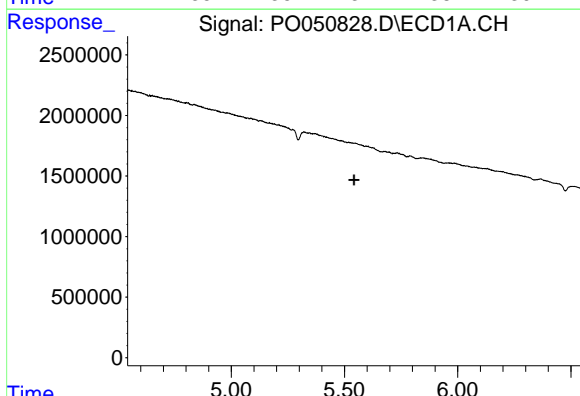
R.T.: 0.000 min  
 Exp R.T. : 5.521 min  
 Response: 0  
 Conc: N.D.

Instrument :  
 ECD\_O  
 ClientSampled :



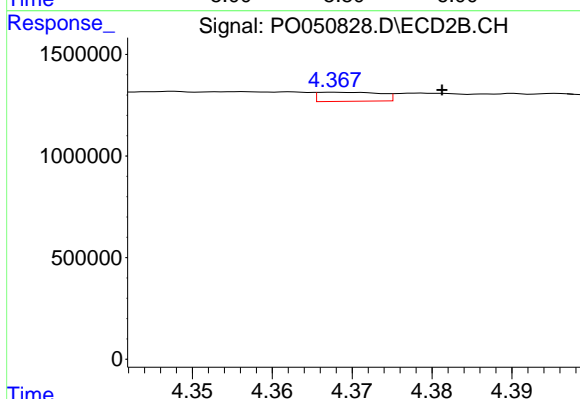
#3 AR-1016-1

R.T.: 4.368 min  
 Delta R.T.: 0.002 min  
 Response: 240885  
 Conc: 26.21 ng/ml



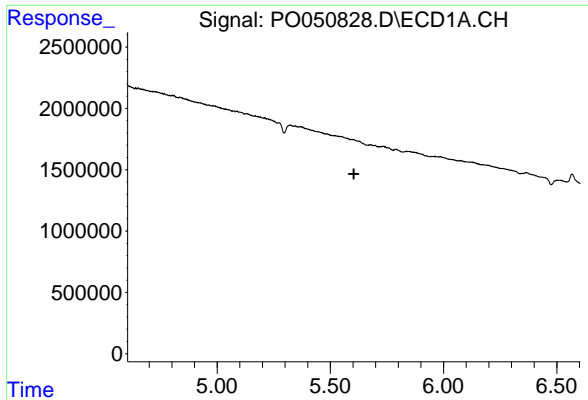
#4 AR-1016-2

R.T.: 0.000 min  
 Exp R.T. : 5.542 min  
 Response: 0  
 Conc: N.D.



#4 AR-1016-2

R.T.: 4.368 min  
 Delta R.T.: -0.014 min  
 Response: 240885  
 Conc: 15.54 ng/ml

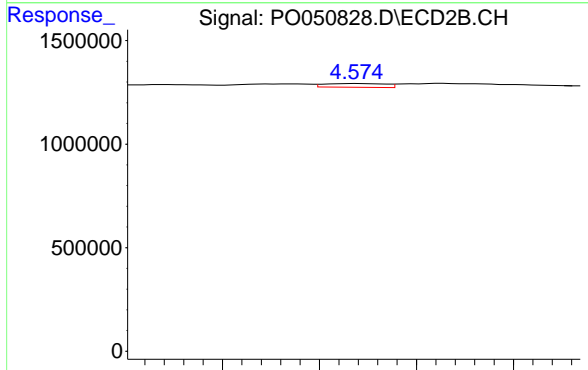


#5 AR-1016-3

R.T.: 0.000 min  
 Exp R.T. : 5.604 min  
 Response: 0  
 Conc: N.D.

Instrument :  
 ECD\_O  
 ClientSampleId :

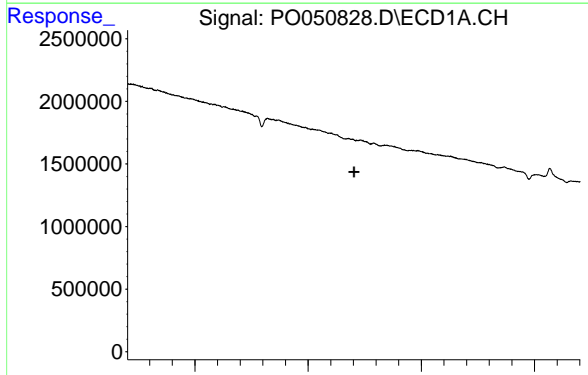
Time



#5 AR-1016-3

R.T.: 4.574 min  
 Delta R.T.: 0.027 min  
 Response: 79521  
 Conc: 9.93 ng/ml

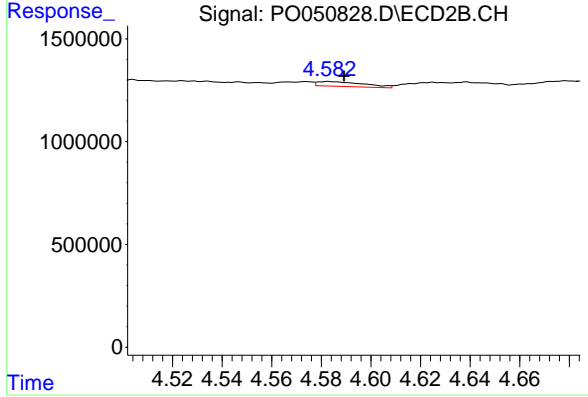
Time



#6 AR-1016-4

R.T.: 0.000 min  
 Exp R.T. : 5.703 min  
 Response: 0  
 Conc: N.D.

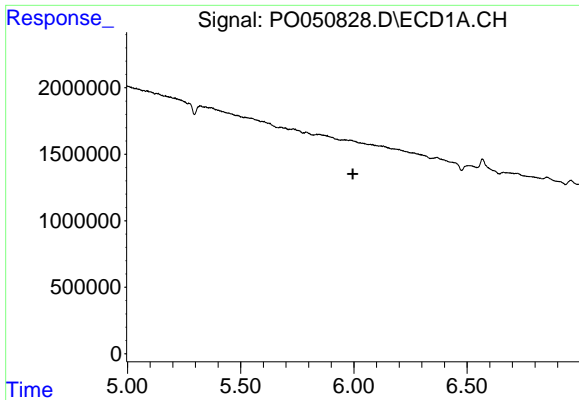
Time



#6 AR-1016-4

R.T.: 4.583 min  
 Delta R.T.: -0.006 min  
 Response: 299424  
 Conc: 49.21 ng/ml

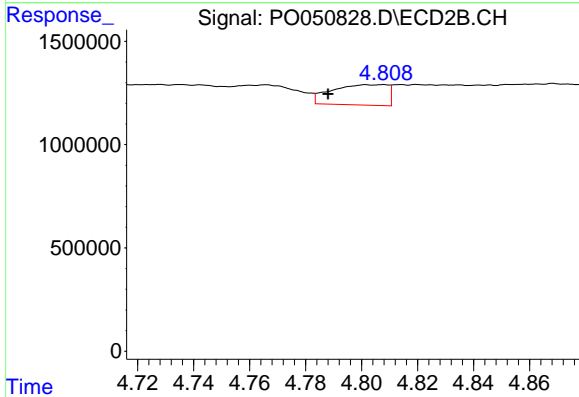
Time



#7 AR-1016-5

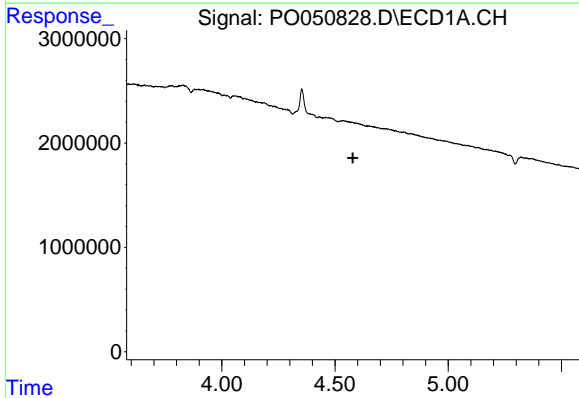
R.T.: 0.000 min  
 Exp R.T.: 5.995 min  
 Response: 0  
 Conc: N.D.

Instrument :  
 ECD\_O  
 ClientSampleId :



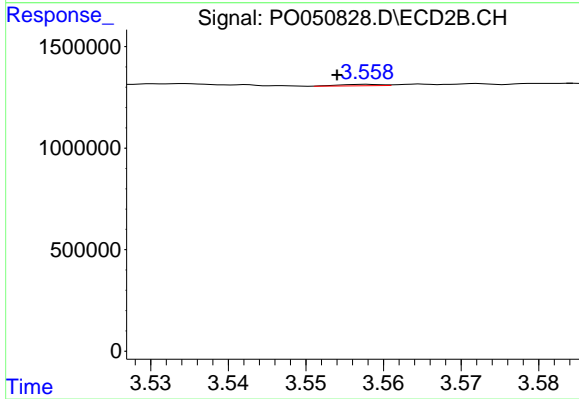
#7 AR-1016-5

R.T.: 4.808 min  
 Delta R.T.: 0.020 min  
 Response: 1365951  
 Conc: 158.29 ng/ml



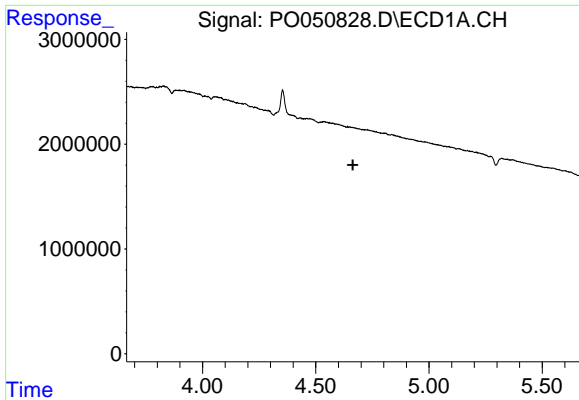
#8 AR-1221-1

R.T.: 0.000 min  
 Exp R.T.: 4.579 min  
 Response: 0  
 Conc: N.D.



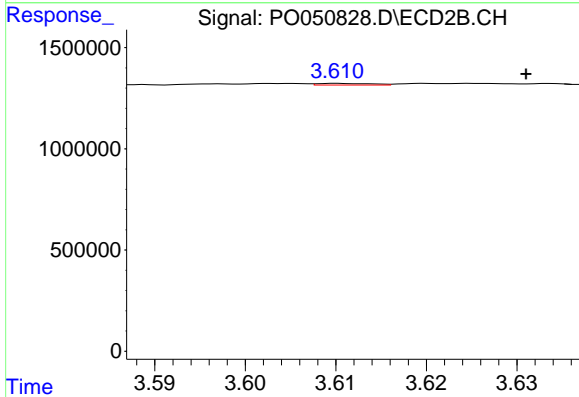
#8 AR-1221-1

R.T.: 3.558 min  
 Delta R.T.: 0.004 min  
 Response: 27240  
 Conc: 16.12 ng/ml

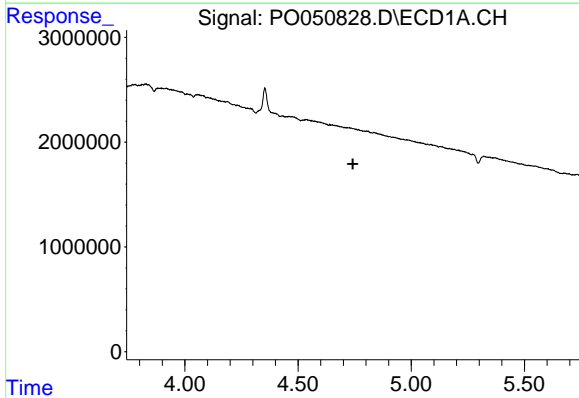


#9 AR-1221-2  
 R.T.: 0.000 min  
 Exp R.T.: 4.664 min  
 Response: 0  
 Conc: N.D.

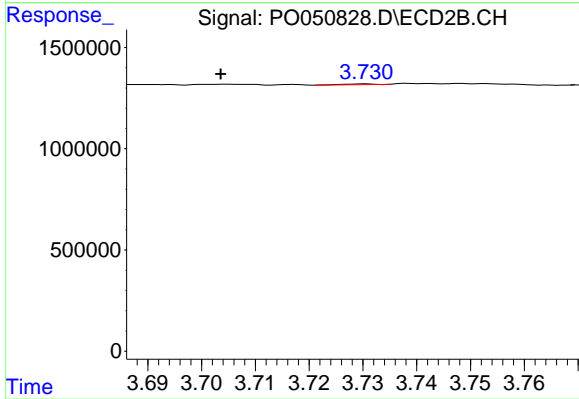
Instrument :  
 ECD\_O  
 ClientSampled :



#9 AR-1221-2  
 R.T.: 3.610 min  
 Delta R.T.: -0.021 min  
 Response: 31953  
 Conc: 25.11 ng/ml

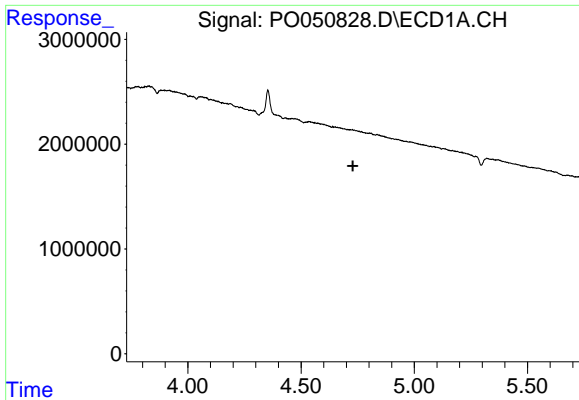


#10 AR-1221-3  
 R.T.: 0.000 min  
 Exp R.T.: 4.742 min  
 Response: 0  
 Conc: N.D.



#10 AR-1221-3  
 R.T.: 3.730 min  
 Delta R.T.: 0.027 min  
 Response: 13529  
 Conc: 3.16 ng/ml

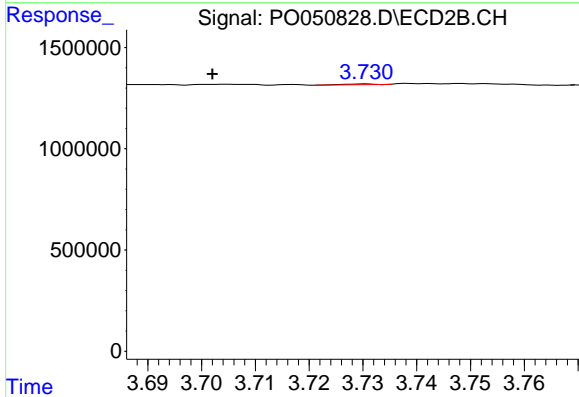




#11 AR-1232-1

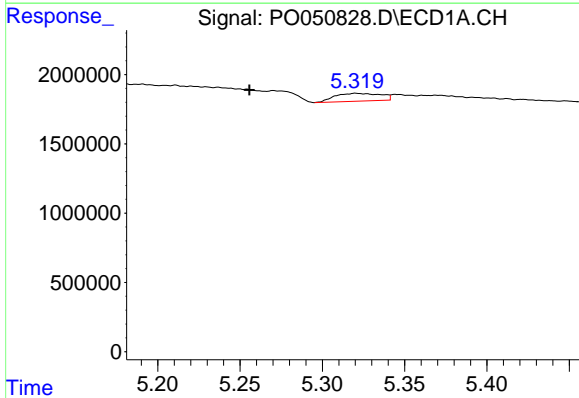
R.T.: 0.000 min  
 Exp R.T.: 4.729 min  
 Response: 0  
 Conc: N.D.

Instrument :  
 ECD\_O  
 ClientSampleId :



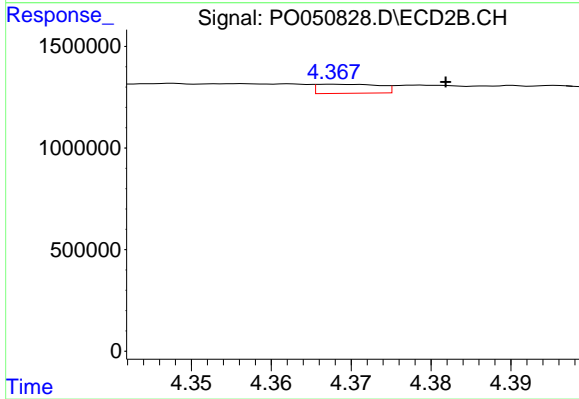
#11 AR-1232-1

R.T.: 3.730 min  
 Delta R.T.: 0.028 min  
 Response: 13529  
 Conc: 3.38 ng/ml



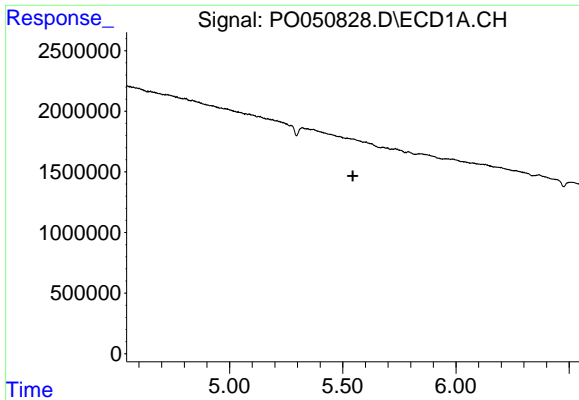
#12 AR-1232-2

R.T.: 5.320 min  
 Delta R.T.: 0.064 min  
 Response: 1095301  
 Conc: 235.05 ng/ml



#12 AR-1232-2

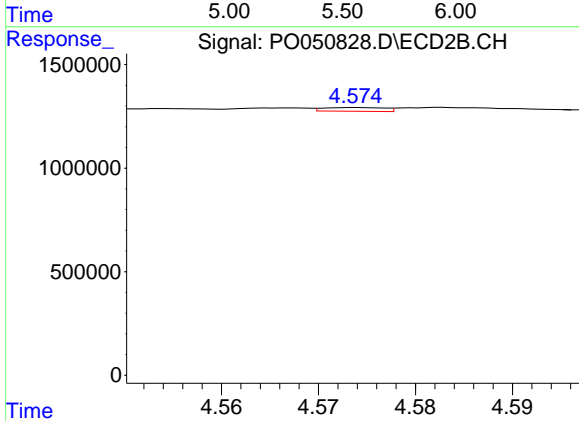
R.T.: 4.368 min  
 Delta R.T.: -0.014 min  
 Response: 240885  
 Conc: 50.36 ng/ml



#13 AR-1232-3

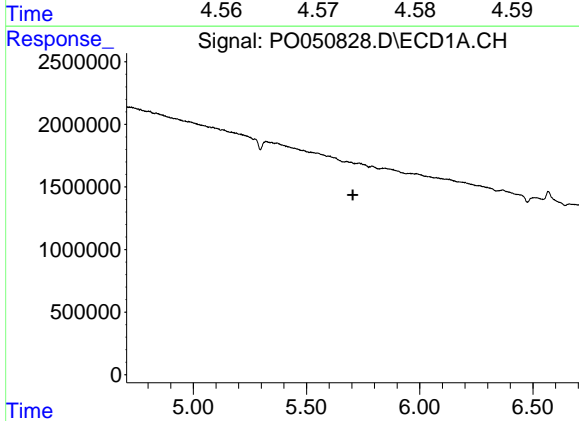
R.T.: 0.000 min  
 Exp R.T. : 5.545 min  
 Response: 0  
 Conc: N.D.

Instrument :  
 ECD\_O  
 ClientSampleId :



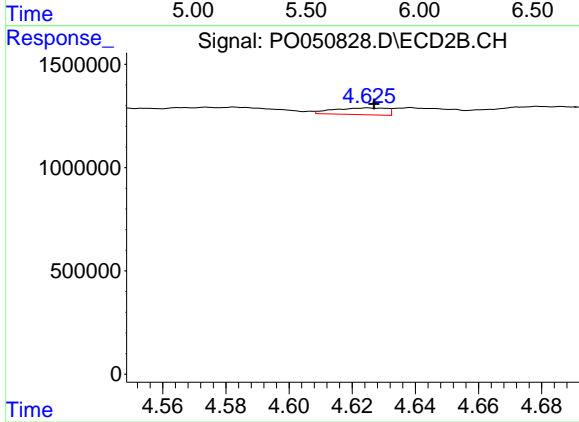
#13 AR-1232-3

R.T.: 4.574 min  
 Delta R.T.: 0.027 min  
 Response: 79521  
 Conc: 30.50 ng/ml



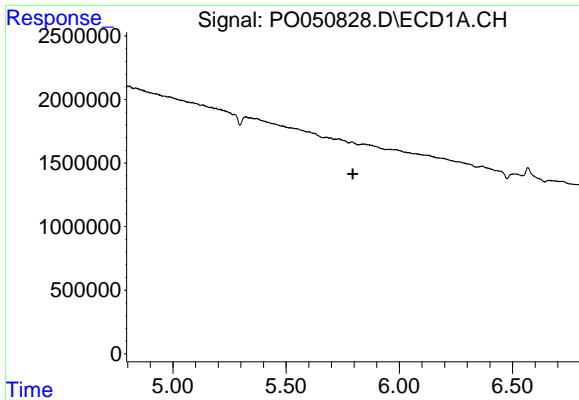
#14 AR-1232-4

R.T.: 0.000 min  
 Exp R.T. : 5.705 min  
 Response: 0  
 Conc: N.D.



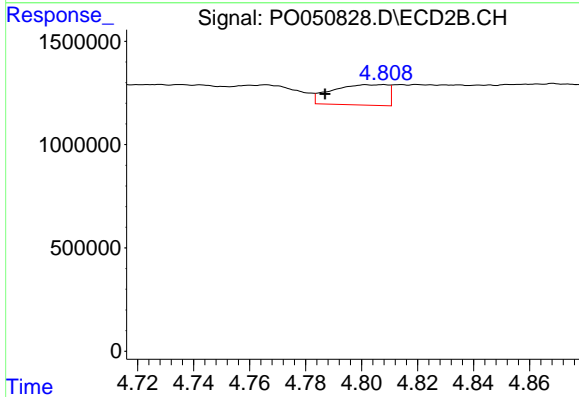
#14 AR-1232-4

R.T.: 4.625 min  
 Delta R.T.: -0.002 min  
 Response: 376426  
 Conc: 168.86 ng/ml

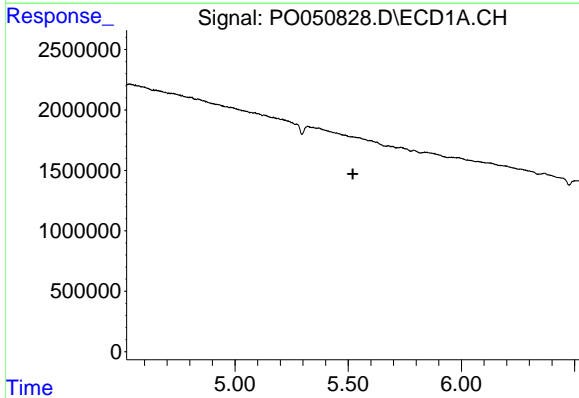


#15 AR-1232-5  
 R.T.: 0.000 min  
 Exp R.T. : 5.794 min  
 Response: 0  
 Conc: N.D.

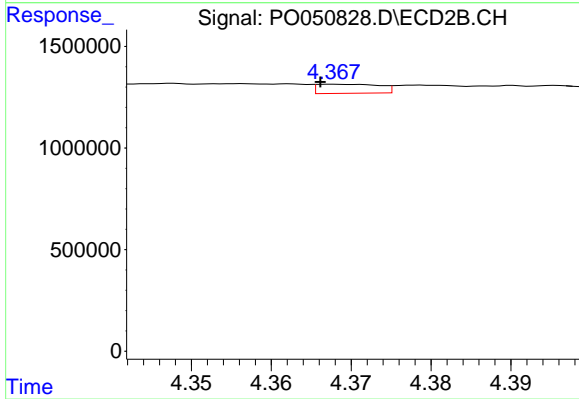
Instrument :  
 ECD\_O  
 ClientSampleId :



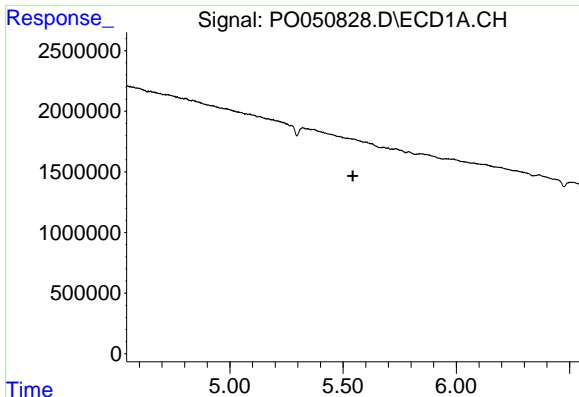
#15 AR-1232-5  
 R.T.: 4.808 min  
 Delta R.T.: 0.021 min  
 Response: 1365951  
 Conc: 513.57 ng/ml



#16 AR-1242-1  
 R.T.: 0.000 min  
 Exp R.T. : 5.521 min  
 Response: 0  
 Conc: N.D.



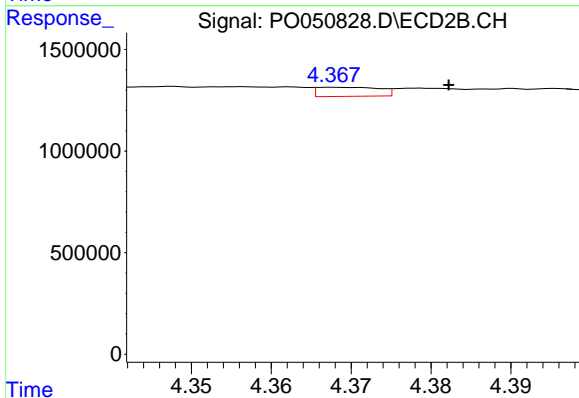
#16 AR-1242-1  
 R.T.: 4.368 min  
 Delta R.T.: 0.002 min  
 Response: 240885  
 Conc: 41.04 ng/ml



#17 AR-1242-2

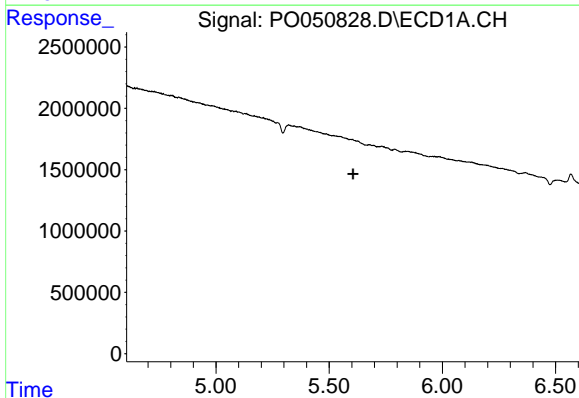
R.T.: 0.000 min  
 Exp R.T. : 5.543 min  
 Response: 0  
 Conc: N.D.

Instrument :  
 ECD\_O  
 ClientSampleId :



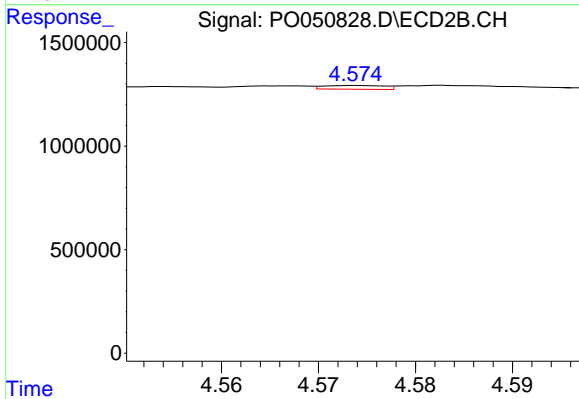
#17 AR-1242-2

R.T.: 4.368 min  
 Delta R.T.: -0.014 min  
 Response: 240885  
 Conc: 24.11 ng/ml



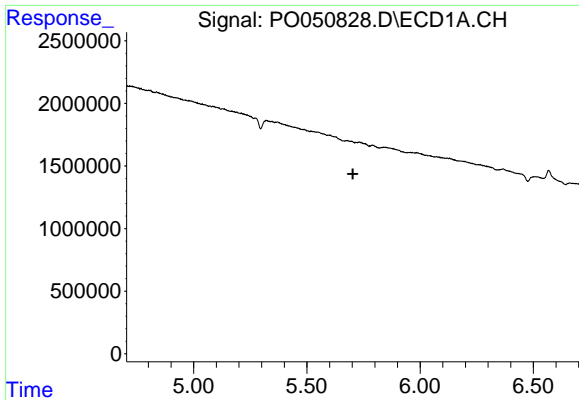
#18 AR-1242-3

R.T.: 0.000 min  
 Exp R.T. : 5.605 min  
 Response: 0  
 Conc: N.D.



#18 AR-1242-3

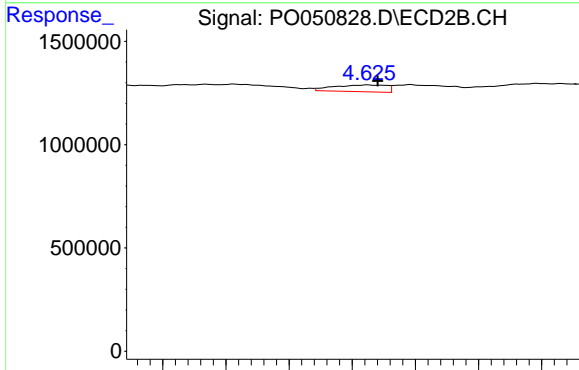
R.T.: 4.574 min  
 Delta R.T.: 0.027 min  
 Response: 79521  
 Conc: 15.75 ng/ml



#19 AR-1242-4

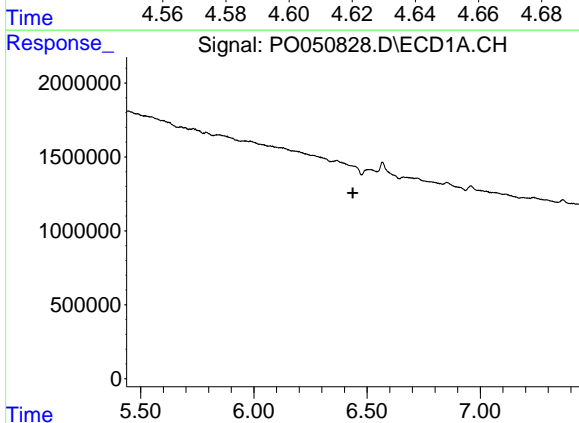
R.T.: 0.000 min  
 Exp R.T. : 5.703 min  
 Response: 0  
 Conc: N.D.

Instrument :  
 ECD\_O  
 ClientSampled :



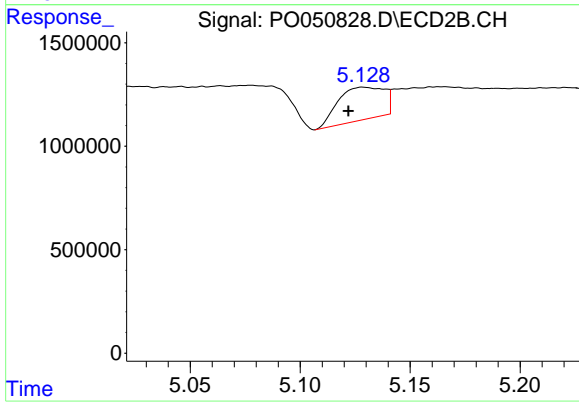
#19 AR-1242-4

R.T.: 4.625 min  
 Delta R.T.: -0.003 min  
 Response: 376426  
 Conc: 78.80 ng/ml



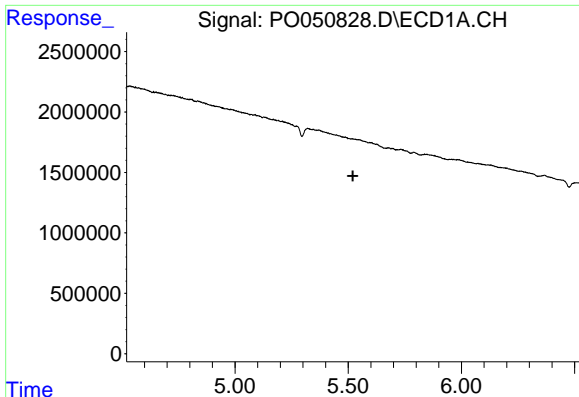
#20 AR-1242-5

R.T.: 0.000 min  
 Exp R.T. : 6.437 min  
 Response: 0  
 Conc: N.D.



#20 AR-1242-5

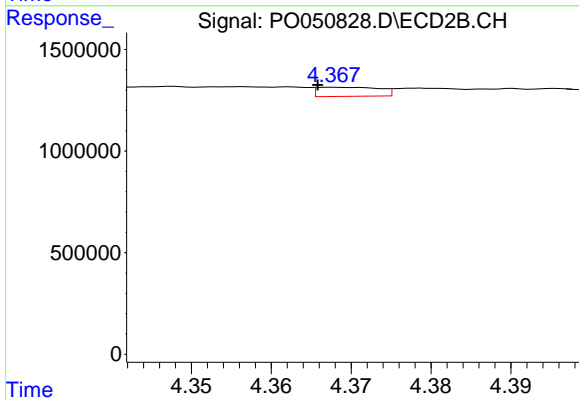
R.T.: 5.128 min  
 Delta R.T.: 0.006 min  
 Response: 2293396  
 Conc: 355.98 ng/ml



#21 AR-1248-1

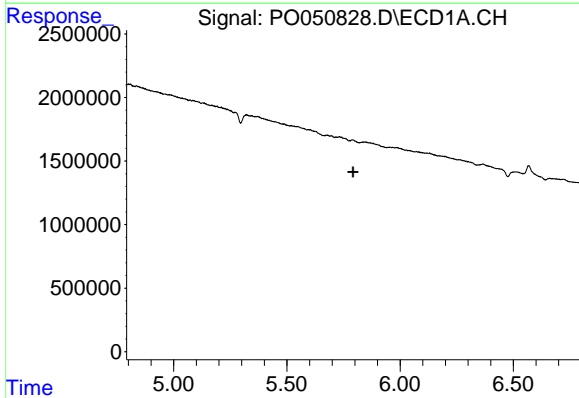
R.T.: 0.000 min  
 Exp R.T. : 5.521 min  
 Response: 0  
 Conc: N.D.

Instrument :  
 ECD\_O  
 ClientSampled :



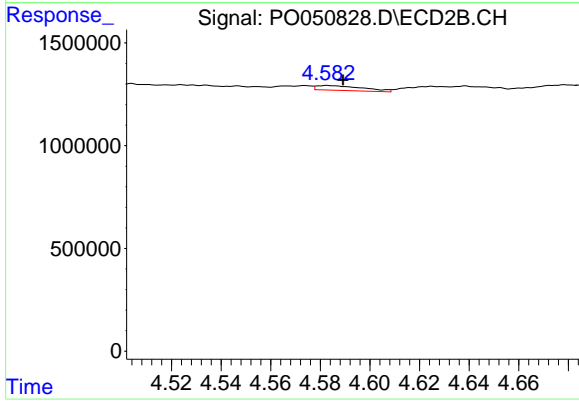
#21 AR-1248-1

R.T.: 4.368 min  
 Delta R.T.: 0.002 min  
 Response: 240885  
 Conc: 52.21 ng/ml



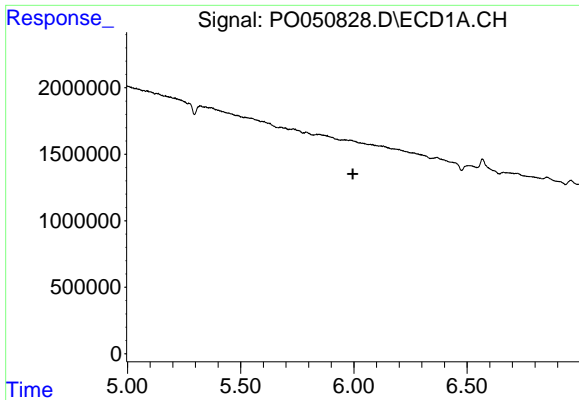
#22 AR-1248-2

R.T.: 0.000 min  
 Exp R.T. : 5.792 min  
 Response: 0  
 Conc: N.D.



#22 AR-1248-2

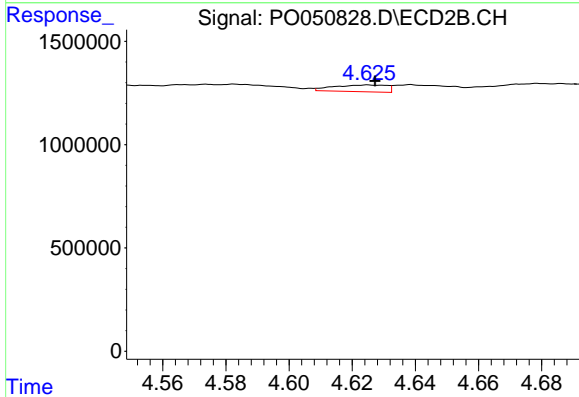
R.T.: 4.583 min  
 Delta R.T.: -0.006 min  
 Response: 299424  
 Conc: 42.99 ng/ml



#23 AR-1248-3

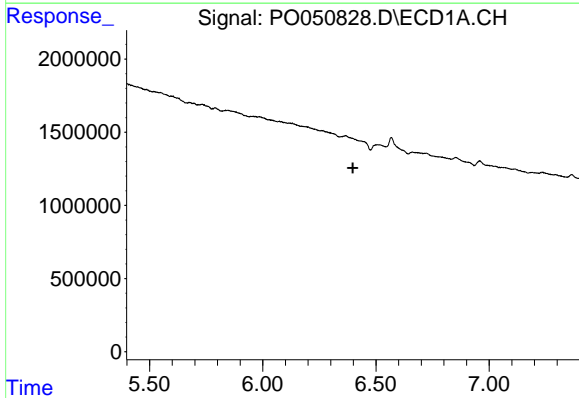
R.T.: 0.000 min  
 Exp R.T.: 5.996 min  
 Response: 0  
 Conc: N.D.

Instrument :  
 ECD\_O  
 ClientSampleId :



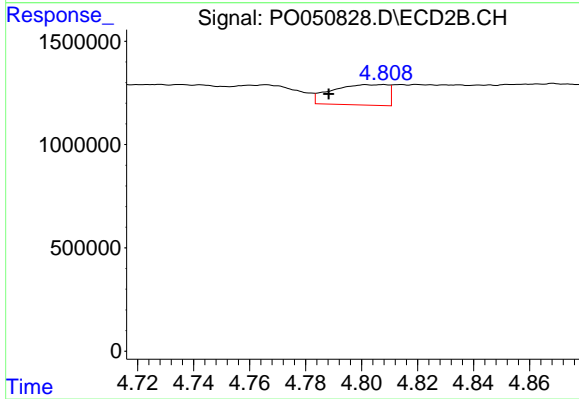
#23 AR-1248-3

R.T.: 4.625 min  
 Delta R.T.: -0.002 min  
 Response: 376426  
 Conc: 53.85 ng/ml



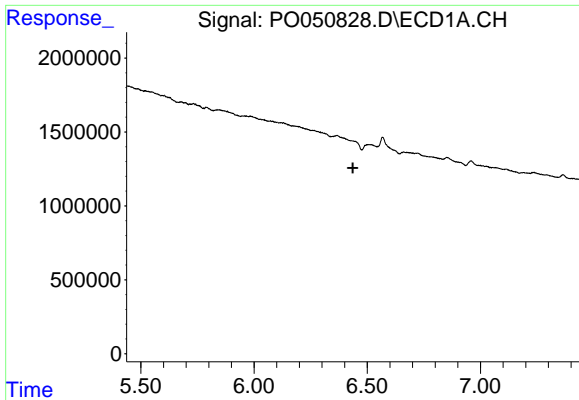
#24 AR-1248-4

R.T.: 0.000 min  
 Exp R.T.: 6.398 min  
 Response: 0  
 Conc: N.D.



#24 AR-1248-4

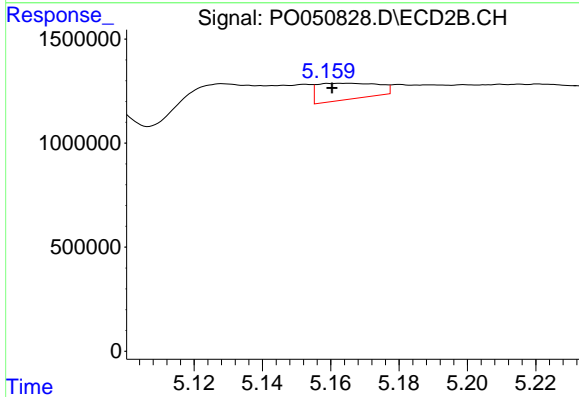
R.T.: 4.808 min  
 Delta R.T.: 0.020 min  
 Response: 1365951  
 Conc: 146.39 ng/ml



#25 AR-1248-5

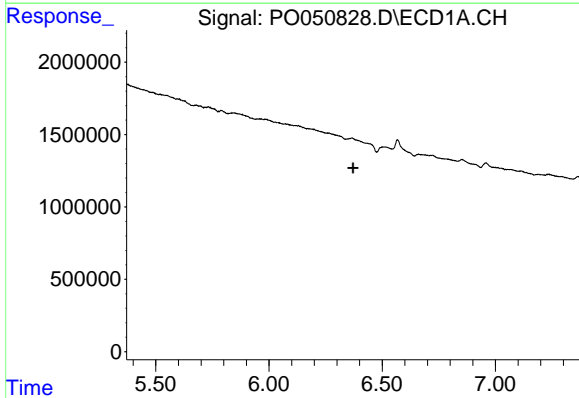
R.T.: 0.000 min  
 Exp R.T. : 6.436 min  
 Response: 0  
 Conc: N.D.

Instrument :  
 ECD\_O  
 ClientSampleId :



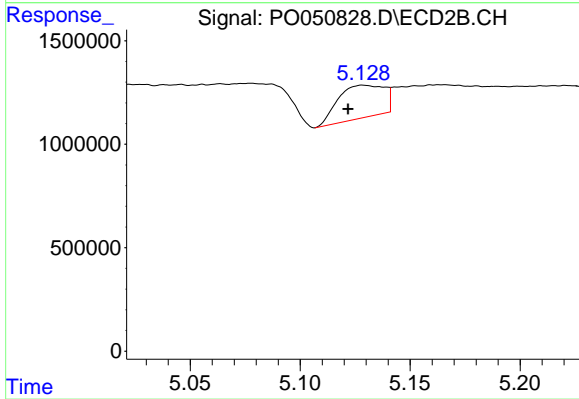
#25 AR-1248-5

R.T.: 5.163 min  
 Delta R.T.: 0.003 min  
 Response: 956381  
 Conc: 99.47 ng/ml



#26 AR-1254-1

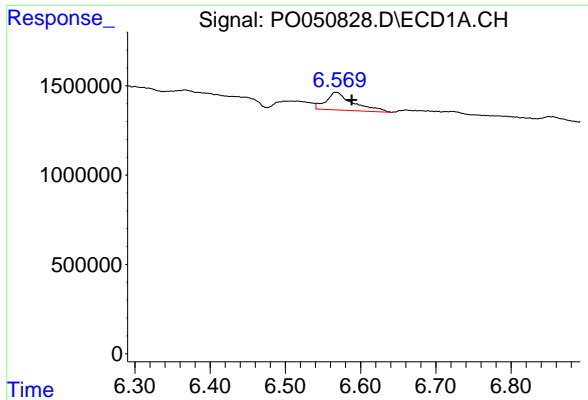
R.T.: 0.000 min  
 Exp R.T. : 6.371 min  
 Response: 0  
 Conc: N.D.



#26 AR-1254-1

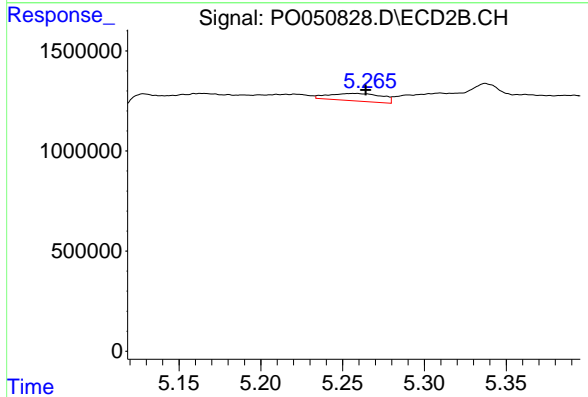
R.T.: 5.128 min  
 Delta R.T.: 0.006 min  
 Response: 2293396  
 Conc: 119.61 ng/ml



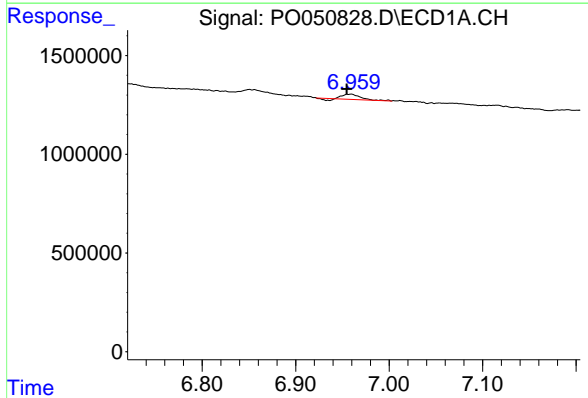


#27 AR-1254-2  
 R.T.: 6.567 min  
 Delta R.T.: -0.021 min  
 Response: 2487722  
 Conc: 73.58 ng/ml

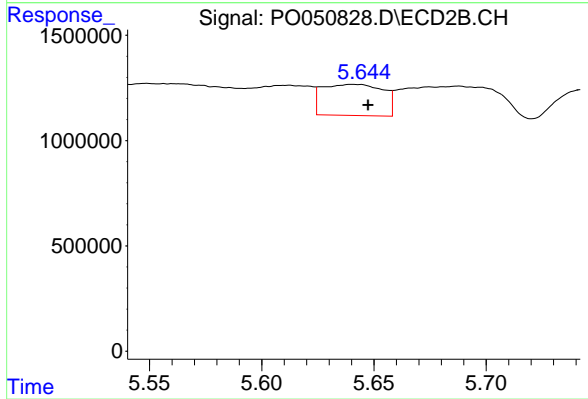
Instrument :  
 ECD\_O  
 ClientSampleId :



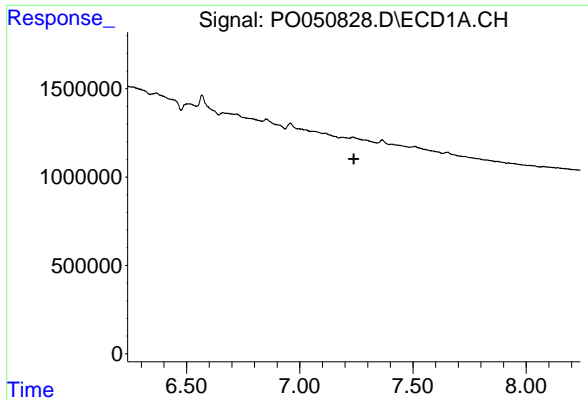
#27 AR-1254-2  
 R.T.: 5.259 min  
 Delta R.T.: -0.006 min  
 Response: 844634  
 Conc: 48.66 ng/ml



#28 AR-1254-3  
 R.T.: 6.959 min  
 Delta R.T.: 0.005 min  
 Response: 308415  
 Conc: 8.86 ng/ml



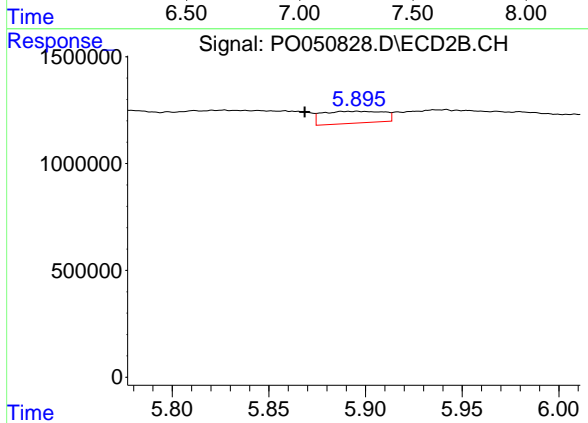
#28 AR-1254-3  
 R.T.: 5.640 min  
 Delta R.T.: -0.007 min  
 Response: 2790841  
 Conc: 98.60 ng/ml



#29 AR-1254-4

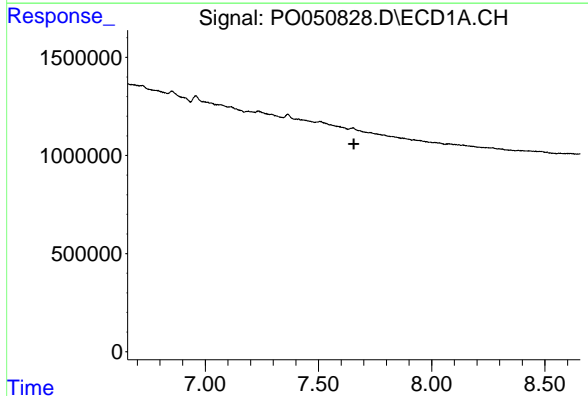
R.T.: 0.000 min  
 Exp R.T.: 7.239 min  
 Response: 0  
 Conc: N.D.

Instrument :  
 ECD\_O  
 ClientSampled :



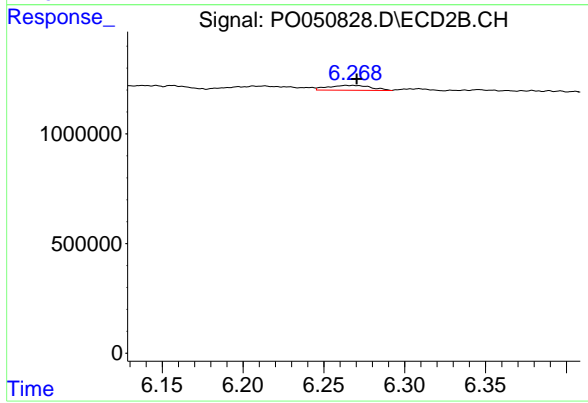
#29 AR-1254-4

R.T.: 5.896 min  
 Delta R.T.: 0.027 min  
 Response: 1236986  
 Conc: 69.98 ng/ml



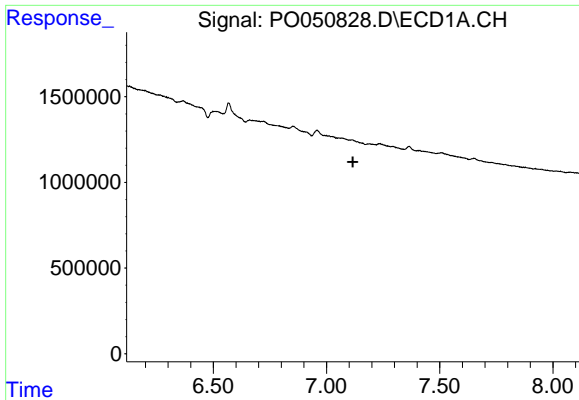
#30 AR-1254-5

R.T.: 0.000 min  
 Exp R.T.: 7.657 min  
 Response: 0  
 Conc: N.D.



#30 AR-1254-5

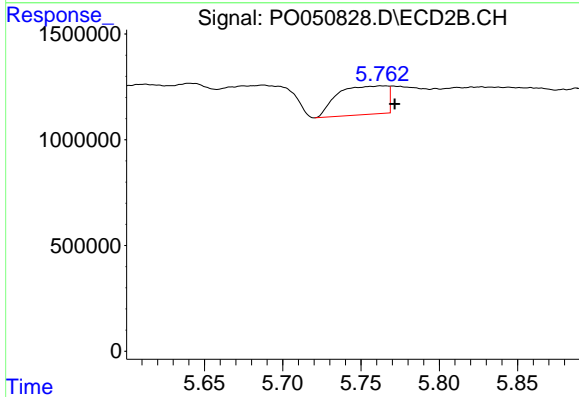
R.T.: 6.264 min  
 Delta R.T.: -0.006 min  
 Response: 408070  
 Conc: 15.26 ng/ml



#31 AR-1260-1

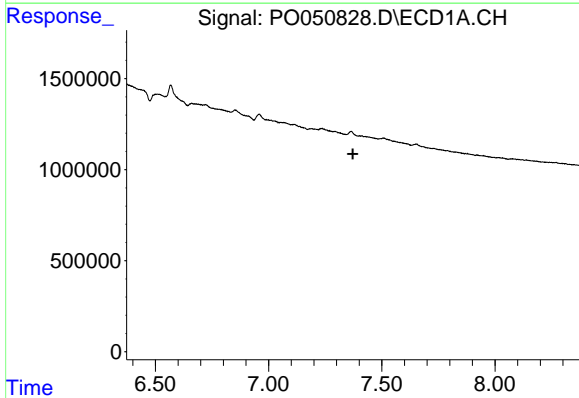
R.T.: 0.000 min  
 Exp R.T. : 7.116 min  
 Response: 0  
 Conc: N.D.

Instrument :  
 ECD\_O  
 ClientSampleId :



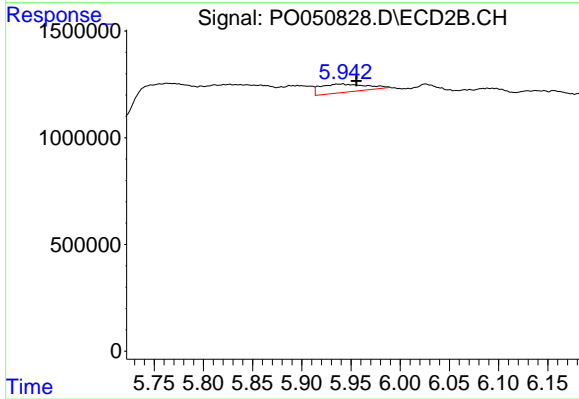
#31 AR-1260-1

R.T.: 5.763 min  
 Delta R.T.: -0.009 min  
 Response: 2968032  
 Conc: 143.55 ng/ml



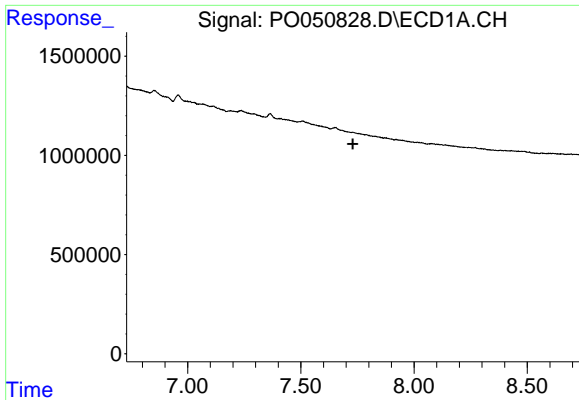
#32 AR-1260-2

R.T.: 0.000 min  
 Exp R.T. : 7.372 min  
 Response: 0  
 Conc: N.D.



#32 AR-1260-2

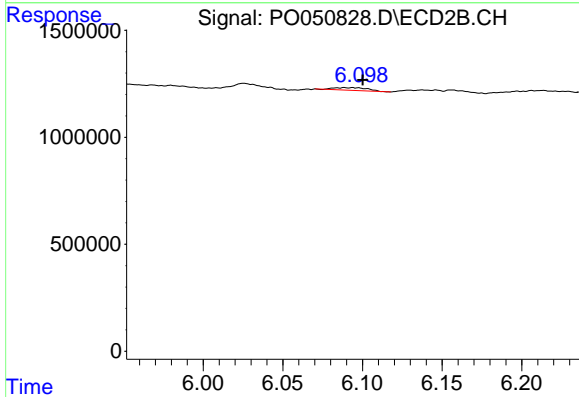
R.T.: 5.941 min  
 Delta R.T.: -0.014 min  
 Response: 1262795  
 Conc: 43.98 ng/ml



#33 AR-1260-3

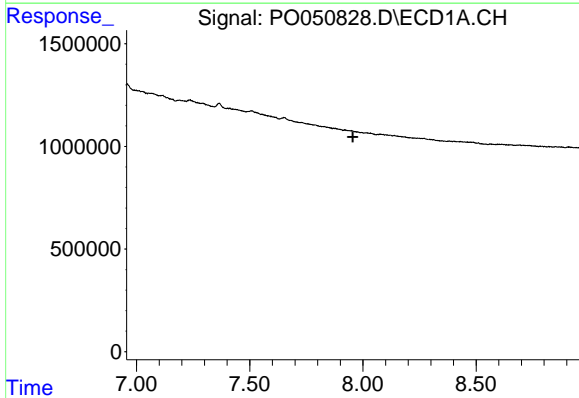
R.T.: 0.000 min  
 Exp R.T. : 7.730 min  
 Response: 0  
 Conc: N.D.

Instrument :  
 ECD\_O  
 ClientSampleId :



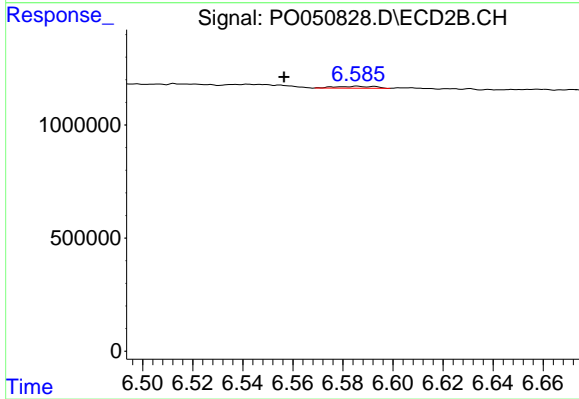
#33 AR-1260-3

R.T.: 6.089 min  
 Delta R.T.: -0.011 min  
 Response: 184238  
 Conc: 7.47 ng/ml



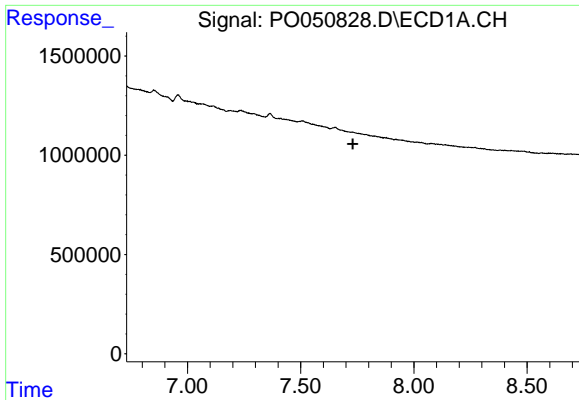
#34 AR-1260-4

R.T.: 0.000 min  
 Exp R.T. : 7.955 min  
 Response: 0  
 Conc: N.D.



#34 AR-1260-4

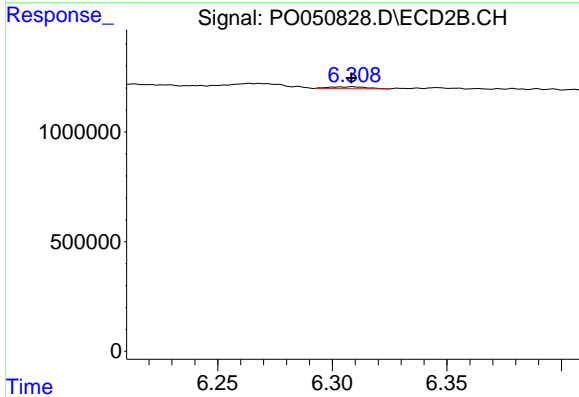
R.T.: 6.586 min  
 Delta R.T.: 0.029 min  
 Response: 99001  
 Conc: 4.80 ng/ml



#36 AR-1262-1

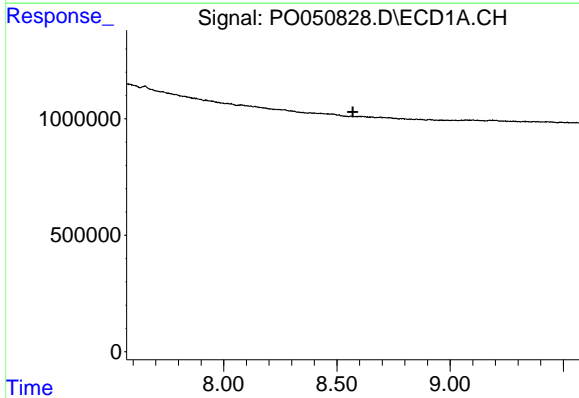
R.T.: 0.000 min  
 Exp R.T. : 7.730 min  
 Response: 0  
 Conc: N.D.

Instrument :  
 ECD\_O  
 ClientSampleId :



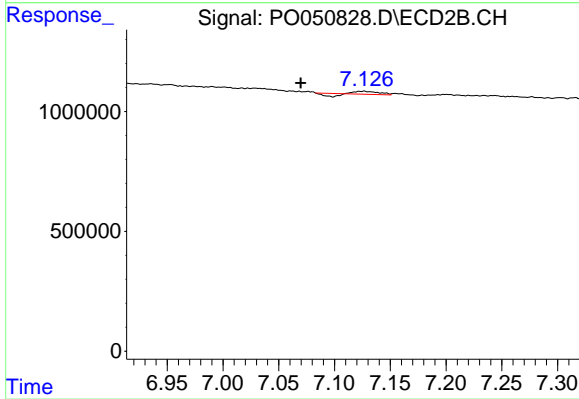
#36 AR-1262-1

R.T.: 6.309 min  
 Delta R.T.: 0.000 min  
 Response: 99969  
 Conc: 3.55 ng/ml



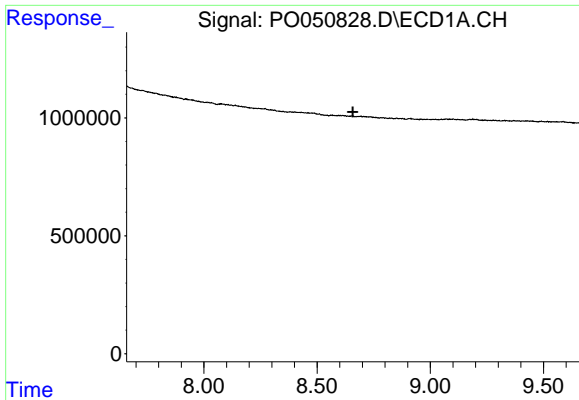
#38 AR-1262-3

R.T.: 0.000 min  
 Exp R.T. : 8.571 min  
 Response: 0  
 Conc: N.D.



#38 AR-1262-3

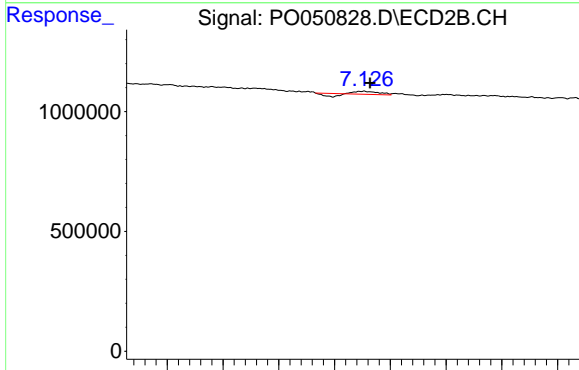
R.T.: 7.126 min  
 Delta R.T.: 0.057 min  
 Response: 107112  
 Conc: 5.97 ng/ml



#39 AR-1262-4

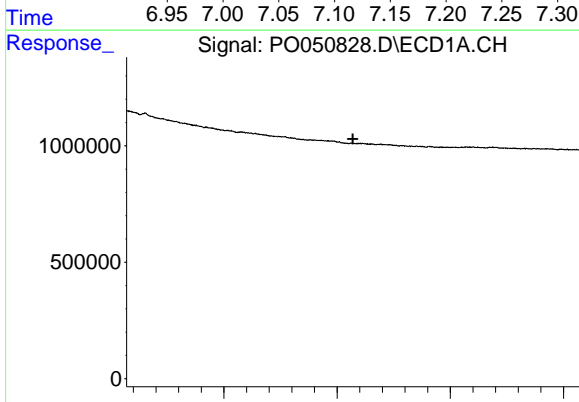
R.T.: 0.000 min  
 Exp R.T. : 8.658 min  
 Response: 0  
 Conc: N.D.

Instrument :  
 ECD\_O  
 ClientSampled :



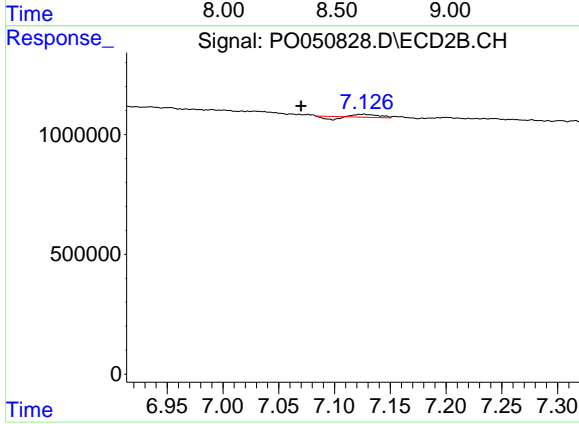
#39 AR-1262-4

R.T.: 7.126 min  
 Delta R.T.: -0.006 min  
 Response: 107112  
 Conc: 3.64 ng/ml



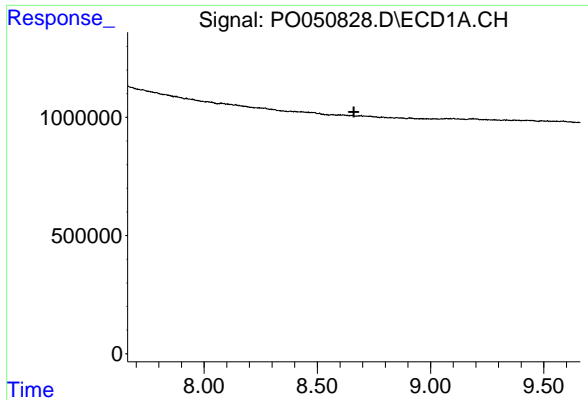
#41 AR-1268-1

R.T.: 0.000 min  
 Exp R.T. : 8.570 min  
 Response: 0  
 Conc: N.D.



#41 AR-1268-1

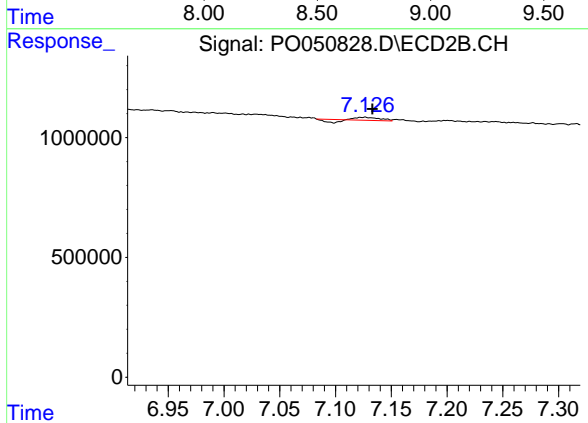
R.T.: 7.126 min  
 Delta R.T.: 0.056 min  
 Response: 107112  
 Conc: 1.94 ng/ml



#42 AR-1268-2

R.T.: 0.000 min  
 Exp R.T.: 8.662 min  
 Response: 0  
 Conc: N.D.

Instrument :  
 ECD\_O  
 ClientSampleId :



#42 AR-1268-2

R.T.: 7.126 min  
 Delta R.T.: -0.007 min  
 Response: 107112  
 Conc: 2.25 ng/ml