

Data Path : Z:\pestpcbsrv\HPCHEM1\ECD_0\Data\PO103118\
 Data File : PO050829.D
 Signal(s) : Signal #1: ECD1A.CH Signal #2: ECD2B.CH
 Acq On : 31 Oct 2018 19:23
 Operator : SM/SJ
 Sample : J5724-07
 Misc :
 ALS Vial : 14 Sample Multiplier: 1

Instrument :
 ECD_0
 ClientSampled :

Integration File signal 1: autoint1.e
 Integration File signal 2: autoint2.e
 Quant Time: Nov 01 01:46:25 2018
 Quant Method : Z:\pestpcbsrv\HPCHEM1\ECD_0\methods\PO102918.M
 Quant Title : GC EXTRACTABLES
 QLast Update : Tue Oct 30 07:48:38 2018
 Response via : Initial Calibration
 Integrator: ChemStation 6890 Scale Mode: Small noise peaks clipped

Volume Inj. : 2 µl
 Signal #1 Phase : ZB-MR1 Signal #2 Phase: ZB-MR2
 Signal #1 Info : 30Mx0.32mmx 0.50µ Signal #2 Info : 30M x 0.32mm x 0.25µm

Compound	RT#1	RT#2	Resp#1	Resp#2	ng/ml	ng/ml
System Monitoring Compounds						
1) SA Tetrachlo...	4.354	3.348	6329748	2744595	12.663	12.627
2) SA Decachlor...	10.012	8.092	2279272	2040853	7.333	7.979
Target Compounds						
3) L1 AR-1016-1	0.000	4.361	0	1769474	N.D.	192.550 #
4) L1 AR-1016-2	0.000	4.391	0	431941	N.D.	27.874 #
5) L1 AR-1016-3	0.000	4.525	0	29343	N.D.	3.663 #
6) L1 AR-1016-4	0.000	4.585	0	946683	N.D.	155.583 #
7) L1 AR-1016-5	0.000	4.802	0	835722	N.D.	96.844 #
8) L2 AR-1221-1	0.000	3.527	0	36599	N.D.	21.652 #
9) L2 AR-1221-2	0.000	3.621	0	21107	N.D.	16.586 #
12) L3 AR-1232-2	5.325	4.391	2097008	431941	450.019	90.295 #
13) L3 AR-1232-3	0.000	4.525	0	29343	N.D.	11.252 #
14) L3 AR-1232-4	0.000	4.628	0	442685	N.D.	198.579 #
15) L3 AR-1232-5	0.000	4.802	0	835722	N.D.	314.214 #
16) L4 AR-1242-1	0.000	4.361	0	1769474	N.D.	301.503 #
17) L4 AR-1242-2	0.000	4.391	0	431941	N.D.	43.236 #
18) L4 AR-1242-3	0.000	4.525	0	29343	N.D.	5.811 #
19) L4 AR-1242-4	0.000	4.628	0	442685	N.D.	92.671 #
20) L4 AR-1242-5	6.505	5.126	520492	1737257	55.801	269.656 #
21) L5 AR-1248-1	0.000	4.361	0	1769474	N.D.	383.546 #
22) L5 AR-1248-2	0.000	4.585	0	946683	N.D.	135.925 #
23) L5 AR-1248-3	0.000	4.628	0	442685	N.D.	63.330 #
24) L5 AR-1248-4	0.000	4.802	0	835722	N.D.	89.562 #
25) L5 AR-1248-5	6.505	5.162	520492	985804	33.341	102.530 #
26) L6 AR-1254-1	0.000	5.126	0	1737257	N.D.	90.605 #
27) L6 AR-1254-2	6.589	5.261	3799766	915565	112.385	52.742 #
28) L6 AR-1254-3	6.959	5.643	1340025	6129008	38.481	216.541 #
29) L6 AR-1254-4	0.000	5.847	0	3447538	N.D.	195.050 #
30) L6 AR-1254-5	0.000	6.267	0	841306	N.D.	31.467 #
31) L7 AR-1260-1	0.000	5.766	0	9285918	N.D.	449.121 #
32) L7 AR-1260-2	7.364	5.951	786458	922282	26.585	32.118
33) L7 AR-1260-3	0.000	6.095	0	689316	N.D.	27.952 #
34) L7 AR-1260-4	0.000	6.586	0	653004	N.D.	31.660 #
35) L7 AR-1260-5	0.000	6.790	0	1271235	N.D.	24.464 #
36) L8 AR-1262-1	0.000	6.306	0	187557	N.D.	6.665 #
37) L8 AR-1262-2	0.000	6.790	0	1271235	N.D.	28.299 #
38) L8 AR-1262-3	0.000	7.075	0	1576388	N.D.	87.800 #
39) L8 AR-1262-4	0.000	7.127	0	2050489	N.D.	69.698 #
40) L8 AR-1262-5	0.000	7.582	0	11540	N.D.	0.994 #
41) L9 AR-1268-1	0.000	7.075	0	1576388	N.D.	28.622 #
42) L9 AR-1268-2	0.000	7.127	0	2050489	N.D.	43.018 #
43) L9 AR-1268-3	0.000	7.301	0	30582	N.D.	0.710 #

Data Path : Z:\pestpcbsrv\HPCHEM1\ECD_0\Data\PO103118\
 Data File : PO050829.D
 Signal(s) : Signal #1: ECD1A.CH Signal #2: ECD2B.CH
 Acq On : 31 Oct 2018 19:23
 Operator : SM/SJ
 Sample : J5724-07
 Misc :
 ALS Vial : 14 Sample Multiplier: 1

Instrument :
 ECD_0
 ClientSampleId :

Integration File signal 1: autoint1.e
 Integration File signal 2: autoint2.e
 Quant Time: Nov 01 01:46:25 2018
 Quant Method : Z:\pestpcbsrv\HPCHEM1\ECD_0\methods\PO102918.M
 Quant Title : GC EXTRACTABLES
 QLast Update : Tue Oct 30 07:48:38 2018
 Response via : Initial Calibration
 Integrator: ChemStation 6890 Scale Mode: Small noise peaks clipped

Volume Inj. : 2 µl
 Signal #1 Phase : ZB-MR1 Signal #2 Phase: ZB-MR2
 Signal #1 Info : 30Mx0.32mmx 0.50µ Signal #2 Info : 30M x 0.32mm x 0.25µm

Compound	RT#1	RT#2	Resp#1	Resp#2	ng/ml	ng/ml
44) L9 AR-1268-4	0.000	7.582	0	11540	N.D.	0.826 #

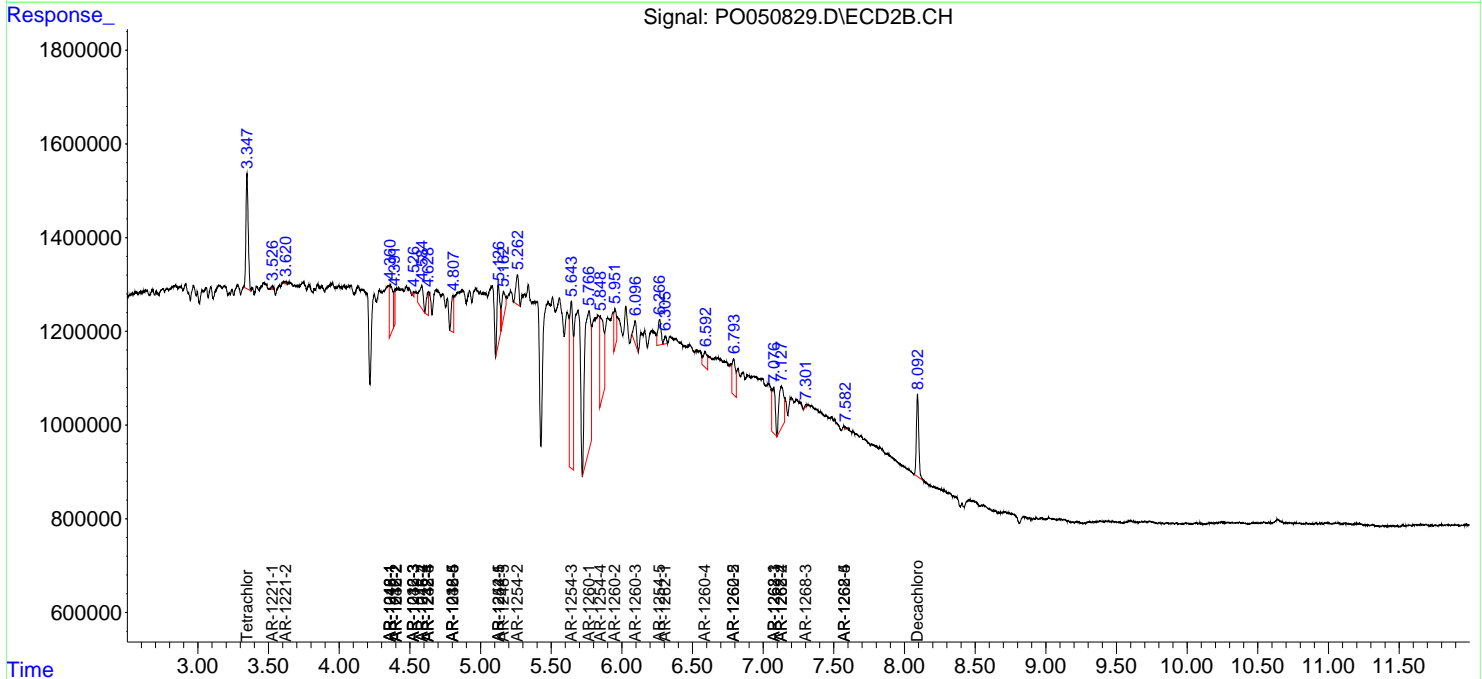
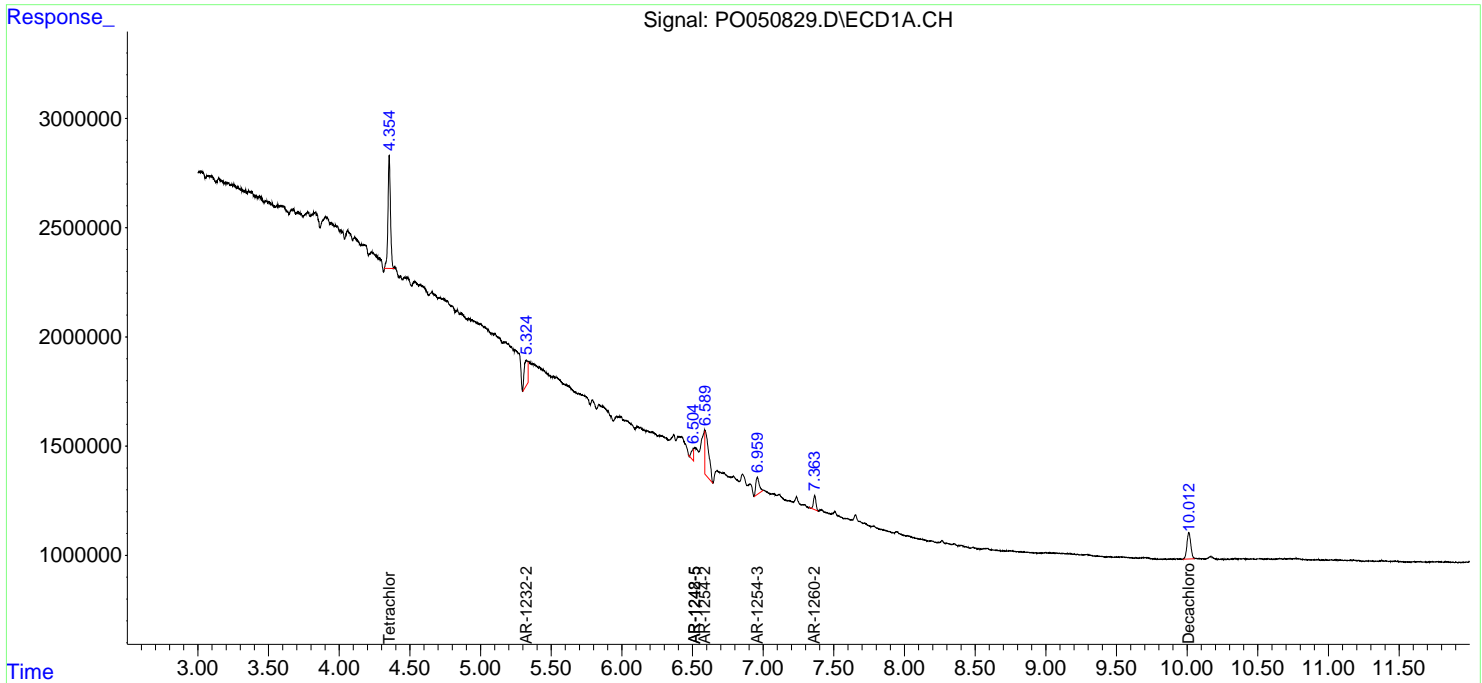
(f)=RT Delta > 1/2 Window (#)=Amounts differ by > 25% (m)=manual int.

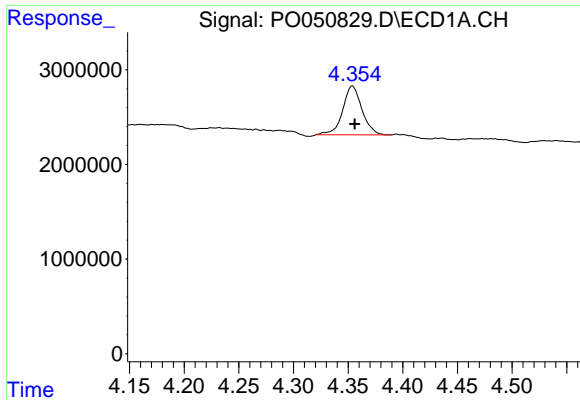
Data Path : Z:\pestpcbsrv\HPCHEM1\ECD_O\Data\PO103118\
 Data File : PO050829.D
 Signal(s) : Signal #1: ECD1A.CH Signal #2: ECD2B.CH
 Acq On : 31 Oct 2018 19:23
 Operator : SM/SJ
 Sample : J5724-07
 Misc :
 ALS Vial : 14 Sample Multiplier: 1

Instrument :
 ECD_O
 ClientSampled :

Integration File signal 1: autoint1.e
 Integration File signal 2: autoint2.e
 Quant Time: Nov 01 01:46:25 2018
 Quant Method : Z:\pestpcbsrv\HPCHEM1\ECD_O\methods\PO102918.M
 Quant Title : GC EXTRACTABLES
 QLast Update : Tue Oct 30 07:48:38 2018
 Response via : Initial Calibration
 Integrator: ChemStation 6890 Scale Mode: Small noise peaks clipped

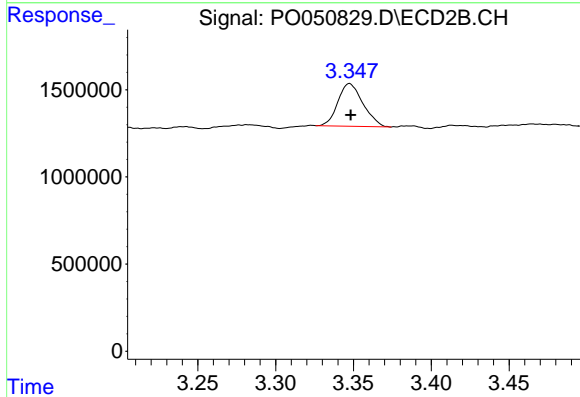
Volume Inj. : 2 µl
 Signal #1 Phase : ZB-MR1 Signal #2 Phase: ZB-MR2
 Signal #1 Info : 30Mx0.32mmx 0.50µ Signal #2 Info : 30M x 0.32mm x 0.25µm



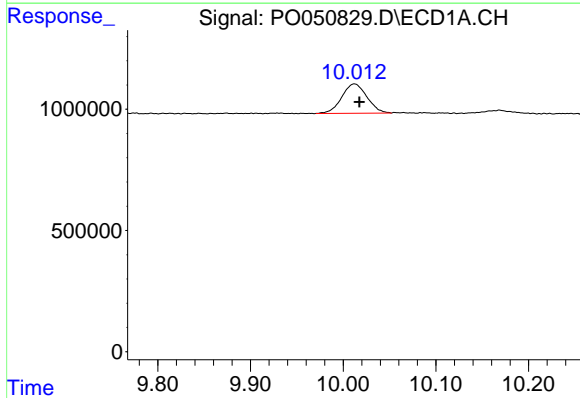


#1 Tetrachloro-m-xylene
 R.T.: 4.354 min
 Delta R.T.: -0.002 min
 Response: 6329748
 Conc: 12.66 ng/ml

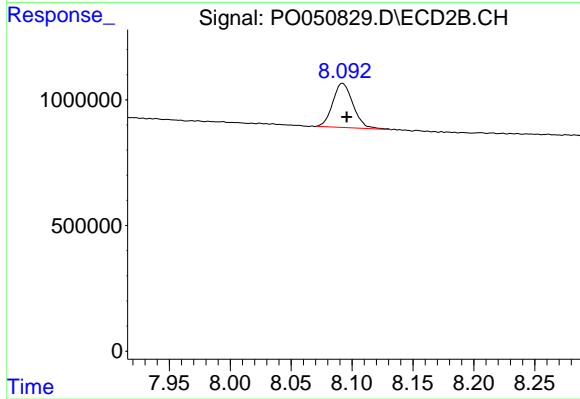
Instrument :
 ECD_O
 ClientSampled :



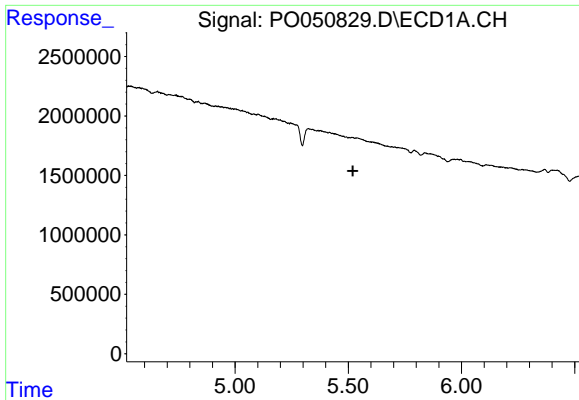
#1 Tetrachloro-m-xylene
 R.T.: 3.348 min
 Delta R.T.: 0.000 min
 Response: 2744595
 Conc: 12.63 ng/ml



#2 Decachlorobiphenyl
 R.T.: 10.012 min
 Delta R.T.: -0.005 min
 Response: 2279272
 Conc: 7.33 ng/ml



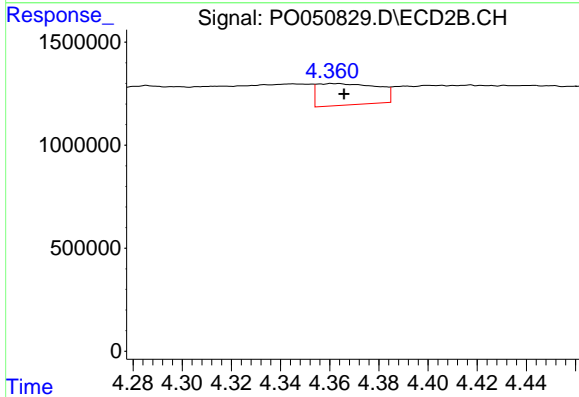
#2 Decachlorobiphenyl
 R.T.: 8.092 min
 Delta R.T.: -0.004 min
 Response: 2040853
 Conc: 7.98 ng/ml



#3 AR-1016-1

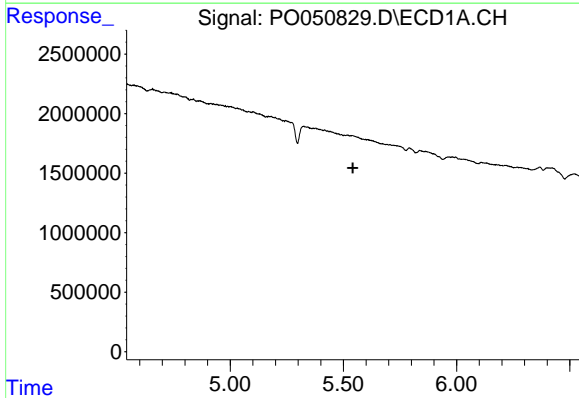
R.T.: 0.000 min
 Exp R.T. : 5.521 min
 Response: 0
 Conc: N.D.

Instrument :
 ECD_O
 ClientSampleId :



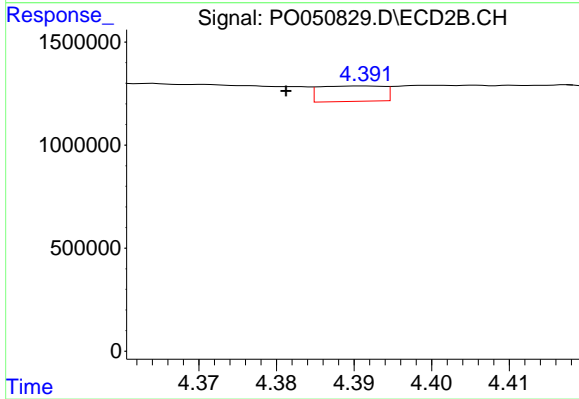
#3 AR-1016-1

R.T.: 4.361 min
 Delta R.T.: -0.005 min
 Response: 1769474
 Conc: 192.55 ng/ml



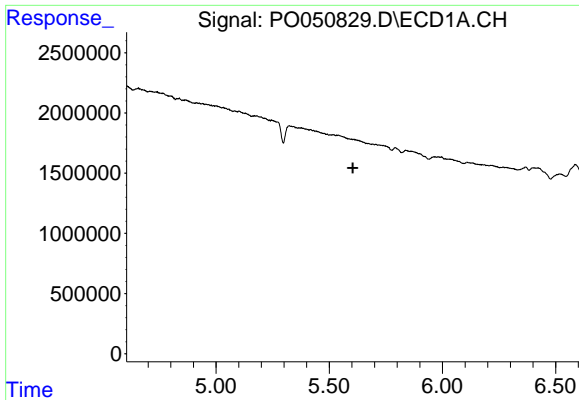
#4 AR-1016-2

R.T.: 0.000 min
 Exp R.T. : 5.542 min
 Response: 0
 Conc: N.D.



#4 AR-1016-2

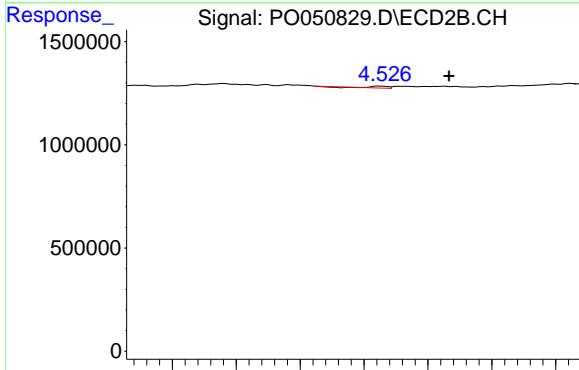
R.T.: 4.391 min
 Delta R.T.: 0.010 min
 Response: 431941
 Conc: 27.87 ng/ml



#5 AR-1016-3

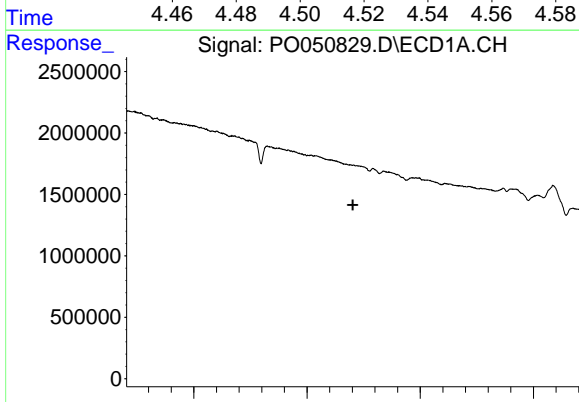
R.T.: 0.000 min
 Exp R.T. : 5.604 min
 Response: 0
 Conc: N.D.

Instrument :
 ECD_O
 ClientSampleId :



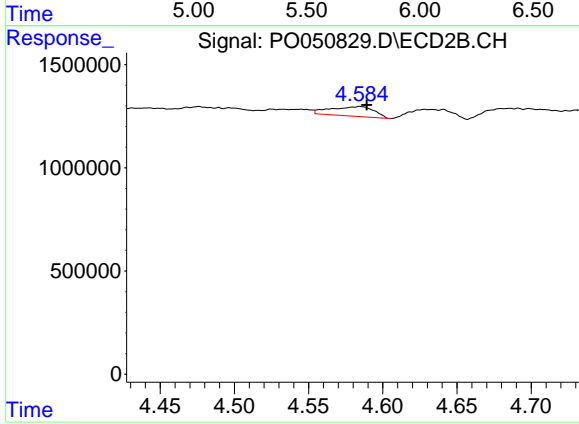
#5 AR-1016-3

R.T.: 4.525 min
 Delta R.T.: -0.022 min
 Response: 29343
 Conc: 3.66 ng/ml



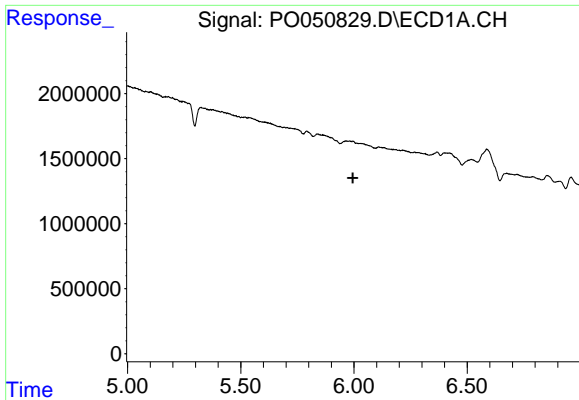
#6 AR-1016-4

R.T.: 0.000 min
 Exp R.T. : 5.703 min
 Response: 0
 Conc: N.D.



#6 AR-1016-4

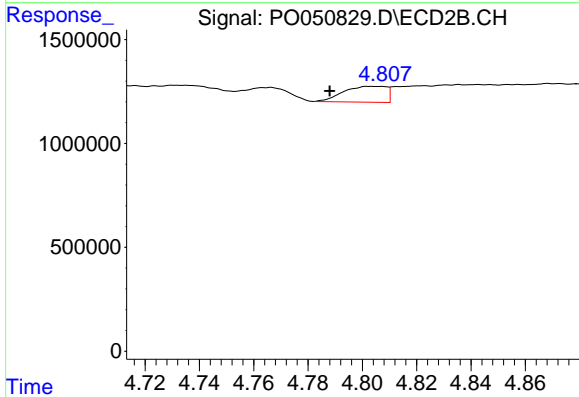
R.T.: 4.585 min
 Delta R.T.: -0.005 min
 Response: 946683
 Conc: 155.58 ng/ml



#7 AR-1016-5

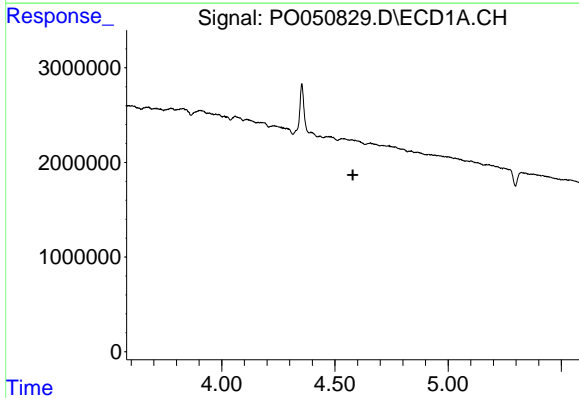
R.T.: 0.000 min
 Exp R.T.: 5.995 min
 Response: 0
 Conc: N.D.

Instrument :
 ECD_O
 ClientSampled :



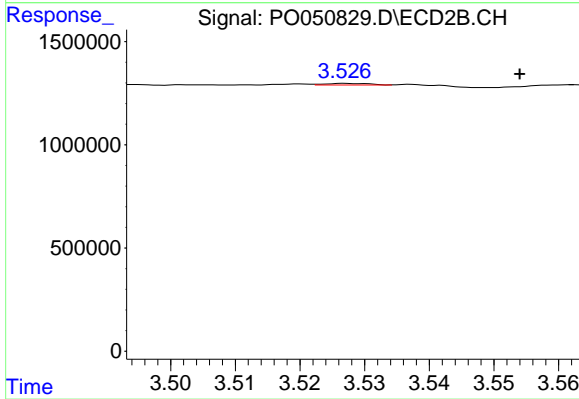
#7 AR-1016-5

R.T.: 4.802 min
 Delta R.T.: 0.014 min
 Response: 835722
 Conc: 96.84 ng/ml



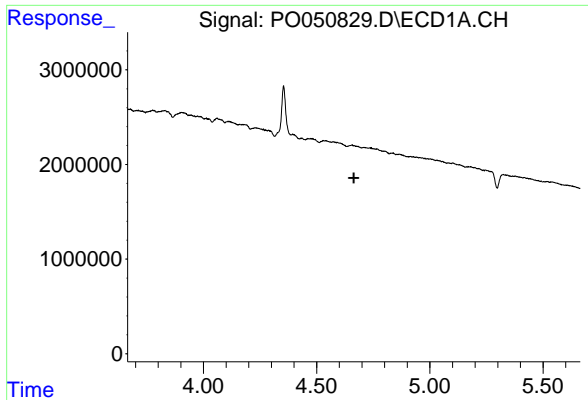
#8 AR-1221-1

R.T.: 0.000 min
 Exp R.T.: 4.579 min
 Response: 0
 Conc: N.D.



#8 AR-1221-1

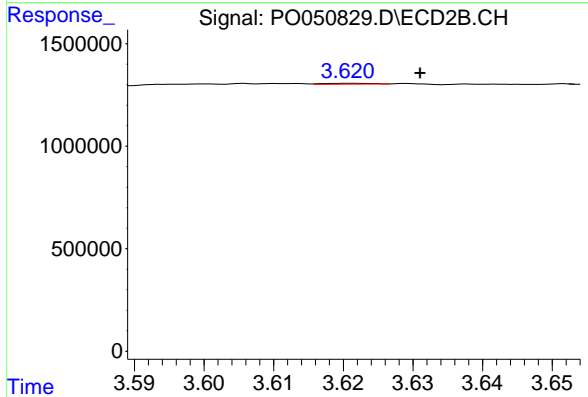
R.T.: 3.527 min
 Delta R.T.: -0.027 min
 Response: 36599
 Conc: 21.65 ng/ml



#9 AR-1221-2

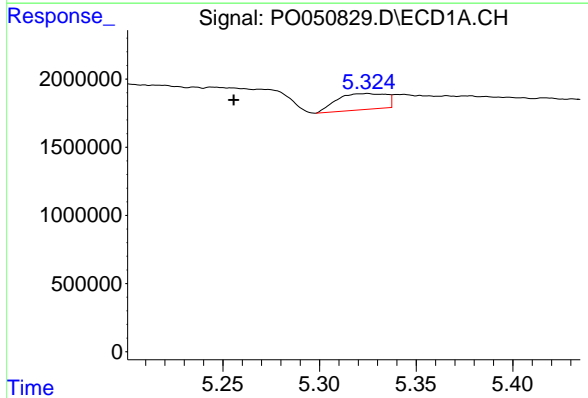
R.T.: 0.000 min
 Exp R.T.: 4.664 min
 Response: 0
 Conc: N.D.

Instrument :
 ECD_O
 ClientSampleId :



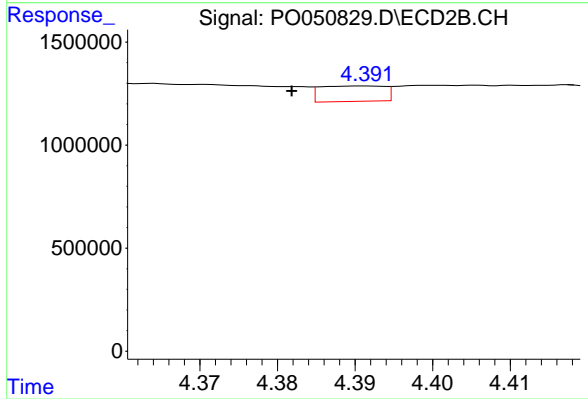
#9 AR-1221-2

R.T.: 3.621 min
 Delta R.T.: -0.010 min
 Response: 21107
 Conc: 16.59 ng/ml



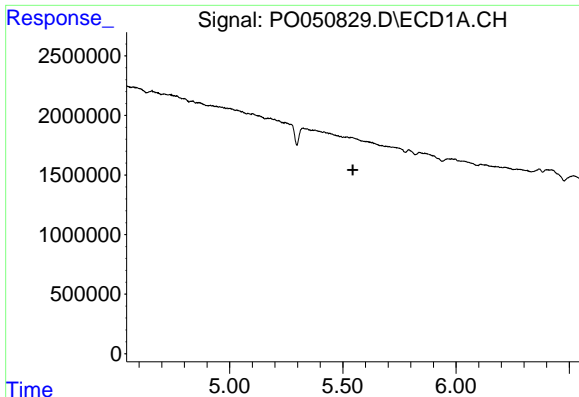
#12 AR-1232-2

R.T.: 5.325 min
 Delta R.T.: 0.069 min
 Response: 2097008
 Conc: 450.02 ng/ml



#12 AR-1232-2

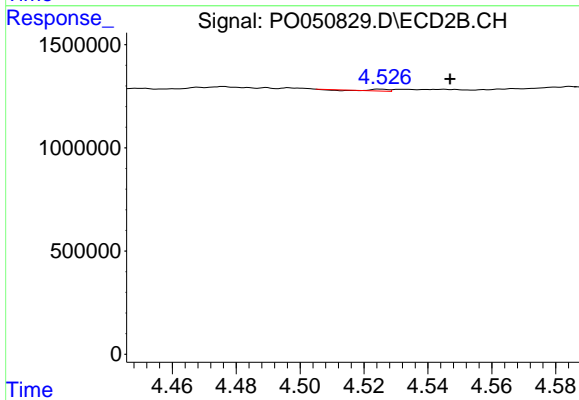
R.T.: 4.391 min
 Delta R.T.: 0.009 min
 Response: 431941
 Conc: 90.29 ng/ml



#13 AR-1232-3

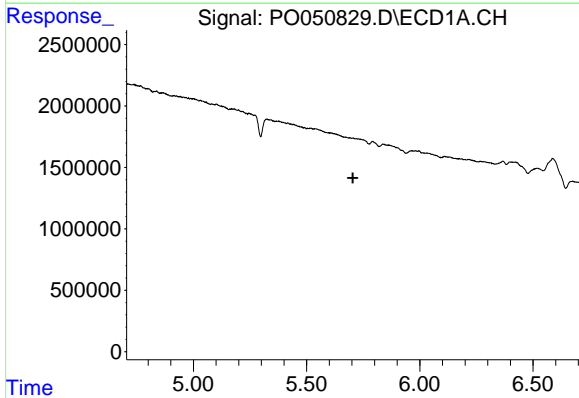
R.T.: 0.000 min
 Exp R.T. : 5.545 min
 Response: 0
 Conc: N.D.

Instrument :
 ECD_O
 ClientSampleId :



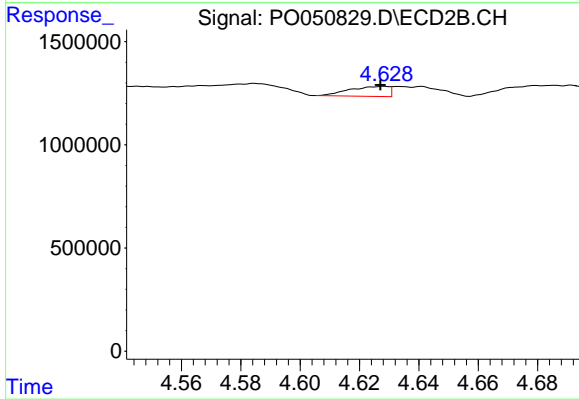
#13 AR-1232-3

R.T.: 4.525 min
 Delta R.T.: -0.022 min
 Response: 29343
 Conc: 11.25 ng/ml



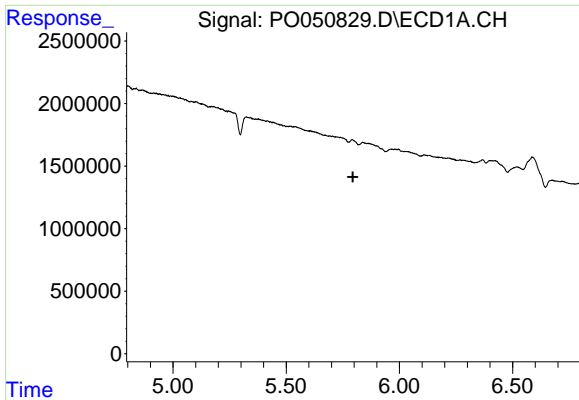
#14 AR-1232-4

R.T.: 0.000 min
 Exp R.T. : 5.705 min
 Response: 0
 Conc: N.D.



#14 AR-1232-4

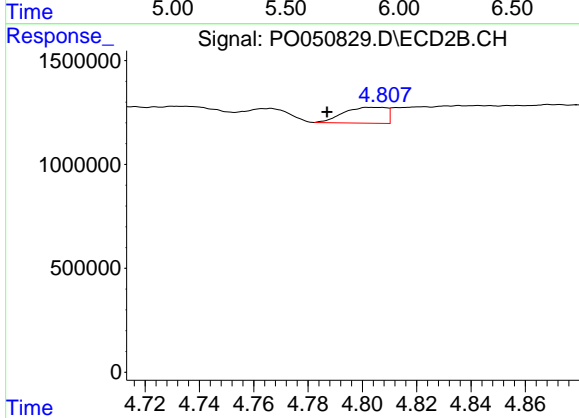
R.T.: 4.628 min
 Delta R.T.: 0.001 min
 Response: 442685
 Conc: 198.58 ng/ml



#15 AR-1232-5

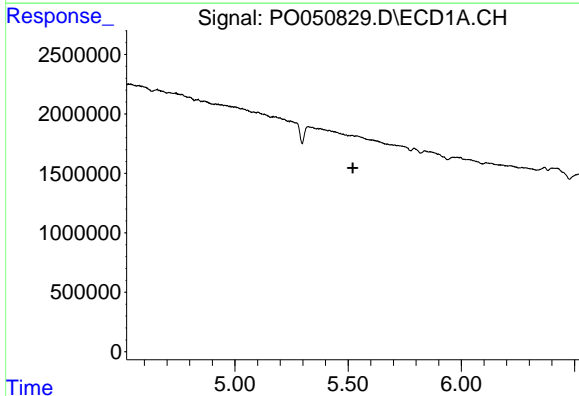
R.T.: 0.000 min
 Exp R.T. : 5.794 min
 Response: 0
 Conc: N.D.

Instrument :
 ECD_O
 ClientSampled :



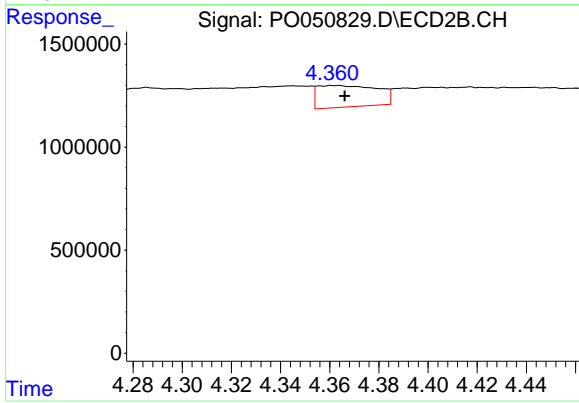
#15 AR-1232-5

R.T.: 4.802 min
 Delta R.T.: 0.015 min
 Response: 835722
 Conc: 314.21 ng/ml



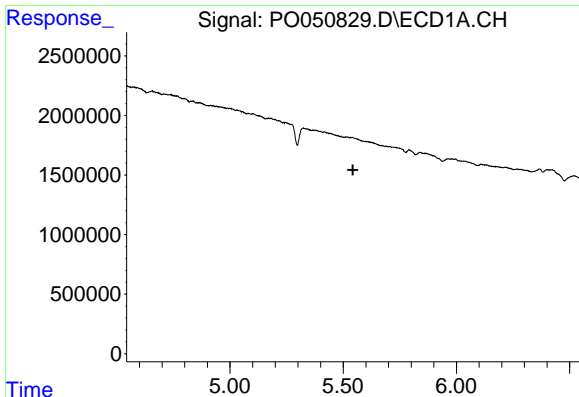
#16 AR-1242-1

R.T.: 0.000 min
 Exp R.T. : 5.521 min
 Response: 0
 Conc: N.D.



#16 AR-1242-1

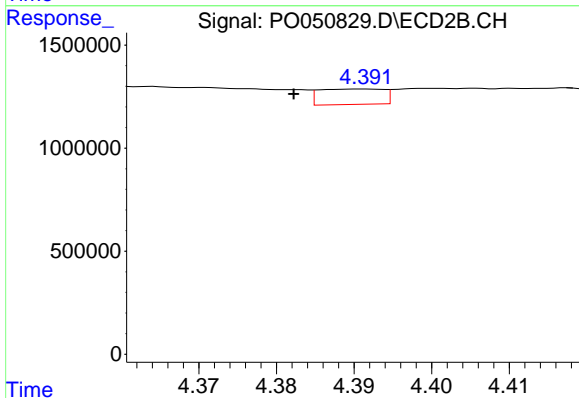
R.T.: 4.361 min
 Delta R.T.: -0.005 min
 Response: 1769474
 Conc: 301.50 ng/ml



#17 AR-1242-2

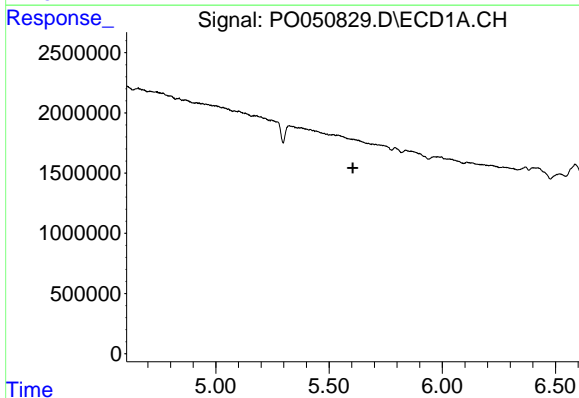
R.T.: 0.000 min
 Exp R.T. : 5.543 min
 Response: 0
 Conc: N.D.

Instrument :
 ECD_O
 ClientSampleId :



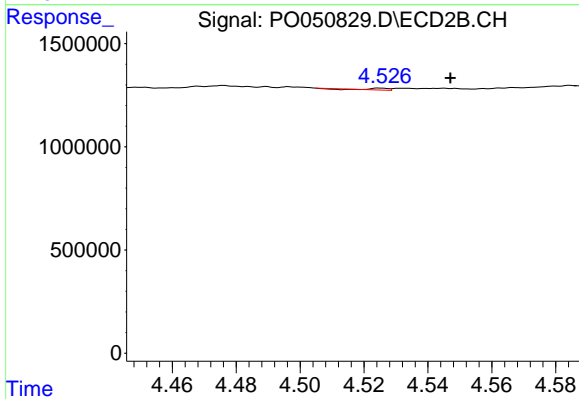
#17 AR-1242-2

R.T.: 4.391 min
 Delta R.T.: 0.009 min
 Response: 431941
 Conc: 43.24 ng/ml



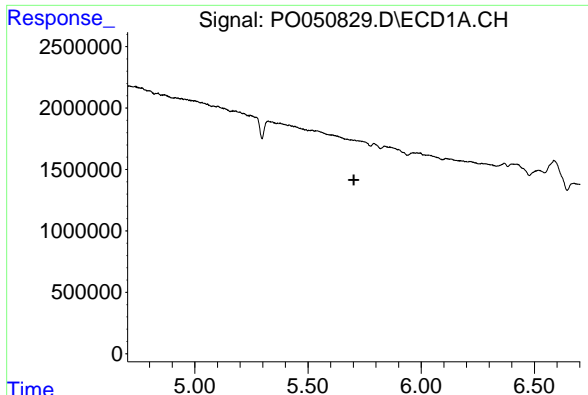
#18 AR-1242-3

R.T.: 0.000 min
 Exp R.T. : 5.605 min
 Response: 0
 Conc: N.D.



#18 AR-1242-3

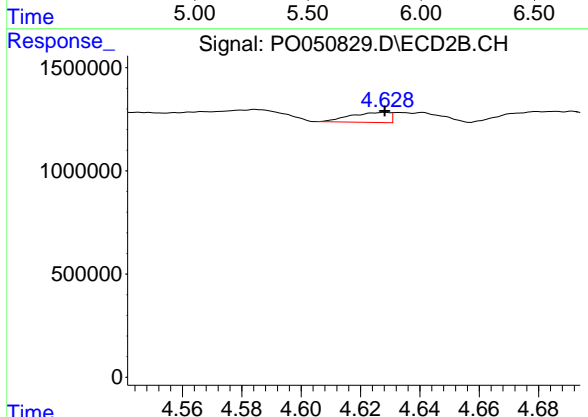
R.T.: 4.525 min
 Delta R.T.: -0.022 min
 Response: 29343
 Conc: 5.81 ng/ml



#19 AR-1242-4

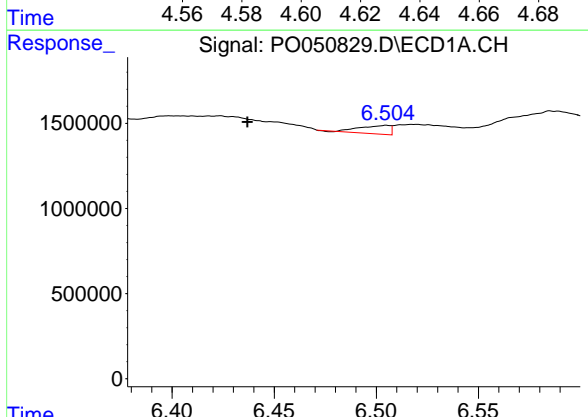
R.T.: 0.000 min
 Exp R.T.: 5.703 min
 Response: 0
 Conc: N.D.

Instrument :
 ECD_O
 ClientSampleId :



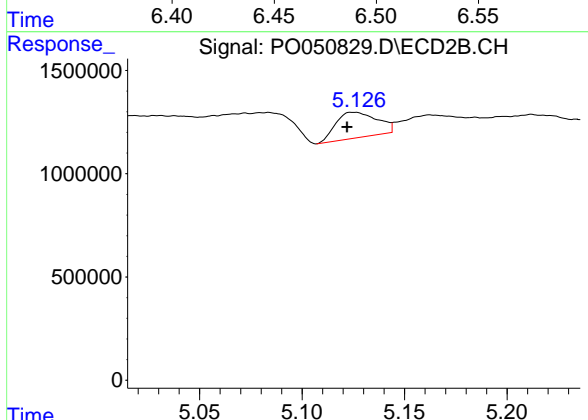
#19 AR-1242-4

R.T.: 4.628 min
 Delta R.T.: 0.000 min
 Response: 442685
 Conc: 92.67 ng/ml



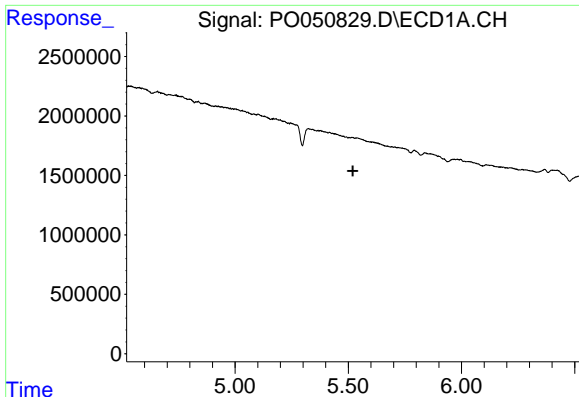
#20 AR-1242-5

R.T.: 6.505 min
 Delta R.T.: 0.068 min
 Response: 520492
 Conc: 55.80 ng/ml



#20 AR-1242-5

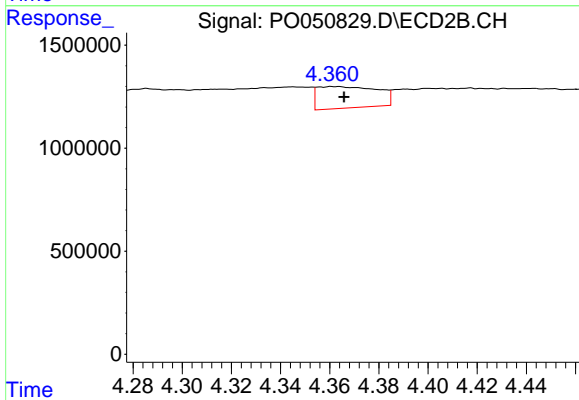
R.T.: 5.126 min
 Delta R.T.: 0.004 min
 Response: 1737257
 Conc: 269.66 ng/ml



#21 AR-1248-1

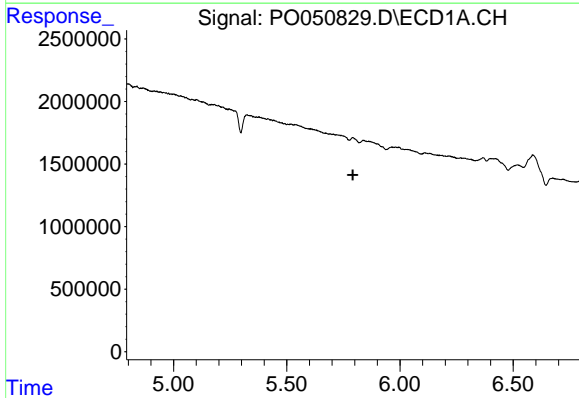
R.T.: 0.000 min
 Exp R.T. : 5.521 min
 Response: 0
 Conc: N.D.

Instrument :
 ECD_O
 ClientSampled :



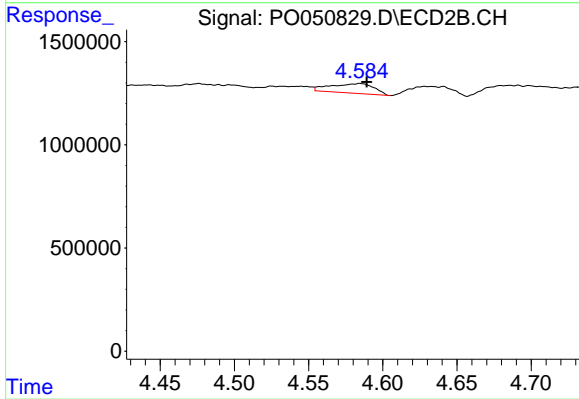
#21 AR-1248-1

R.T.: 4.361 min
 Delta R.T.: -0.005 min
 Response: 1769474
 Conc: 383.55 ng/ml



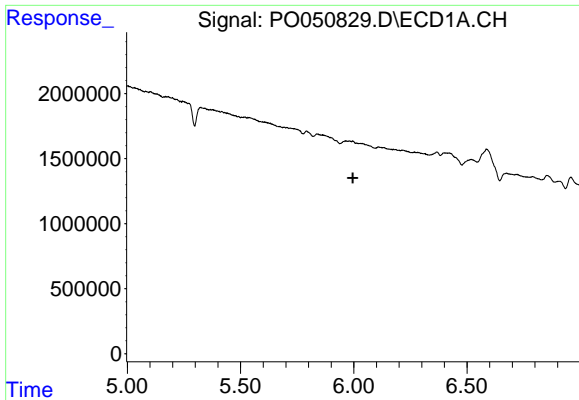
#22 AR-1248-2

R.T.: 0.000 min
 Exp R.T. : 5.792 min
 Response: 0
 Conc: N.D.



#22 AR-1248-2

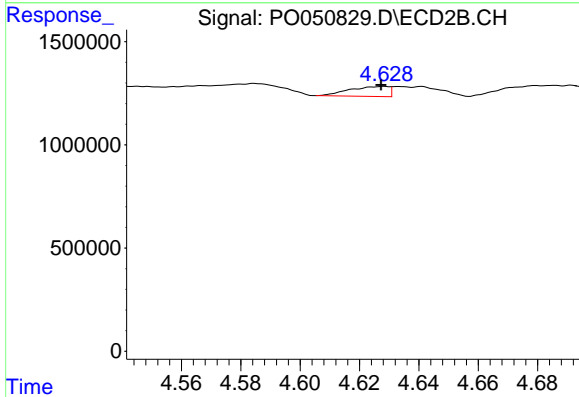
R.T.: 4.585 min
 Delta R.T.: -0.005 min
 Response: 946683
 Conc: 135.92 ng/ml



#23 AR-1248-3

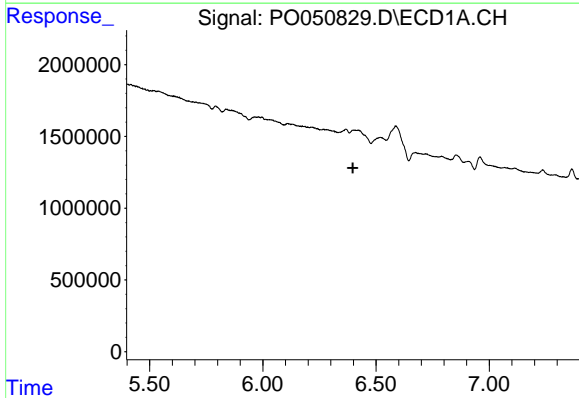
R.T.: 0.000 min
 Exp R.T.: 5.996 min
 Response: 0
 Conc: N.D.

Instrument :
 ECD_O
 ClientSampled :



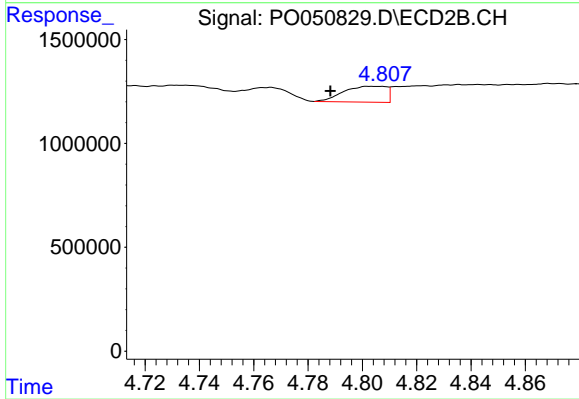
#23 AR-1248-3

R.T.: 4.628 min
 Delta R.T.: 0.001 min
 Response: 442685
 Conc: 63.33 ng/ml



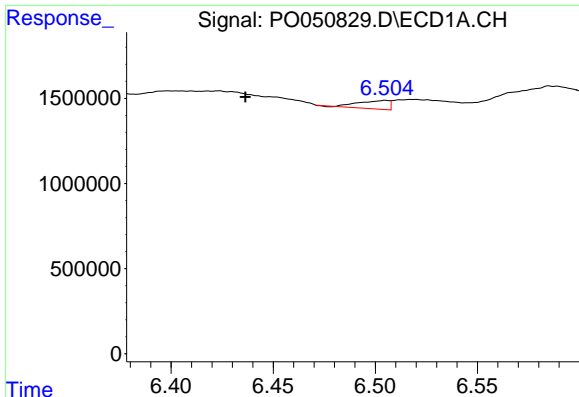
#24 AR-1248-4

R.T.: 0.000 min
 Exp R.T.: 6.398 min
 Response: 0
 Conc: N.D.



#24 AR-1248-4

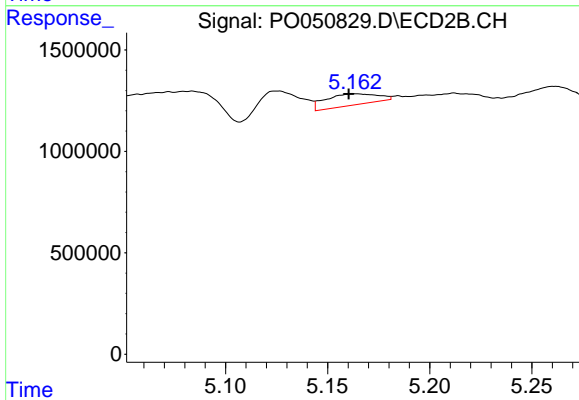
R.T.: 4.802 min
 Delta R.T.: 0.014 min
 Response: 835722
 Conc: 89.56 ng/ml



#25 AR-1248-5

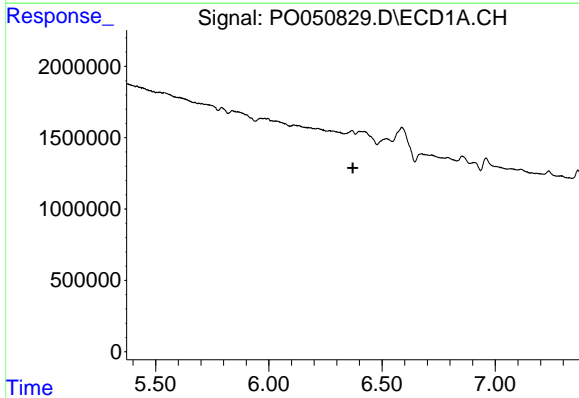
R.T.: 6.505 min
 Delta R.T.: 0.069 min
 Response: 520492
 Conc: 33.34 ng/ml

Instrument :
 ECD_O
 ClientSampled :



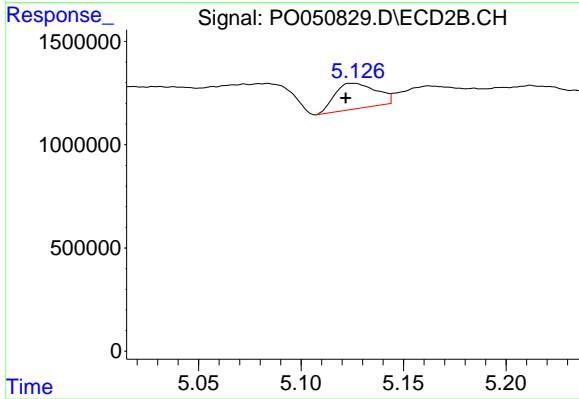
#25 AR-1248-5

R.T.: 5.162 min
 Delta R.T.: 0.002 min
 Response: 985804
 Conc: 102.53 ng/ml



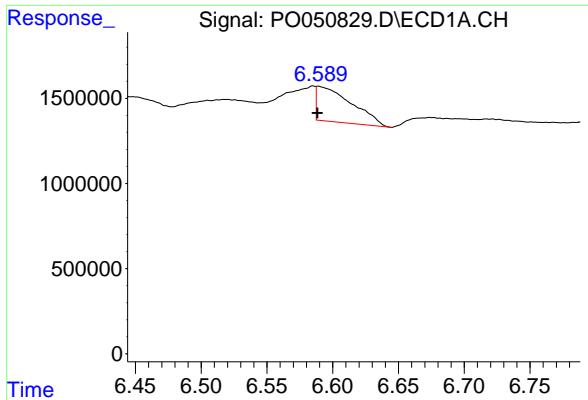
#26 AR-1254-1

R.T.: 0.000 min
 Exp R.T. : 6.371 min
 Response: 0
 Conc: N.D.



#26 AR-1254-1

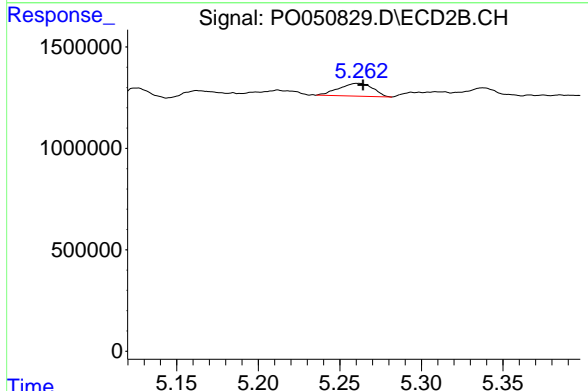
R.T.: 5.126 min
 Delta R.T.: 0.005 min
 Response: 1737257
 Conc: 90.61 ng/ml



#27 AR-1254-2

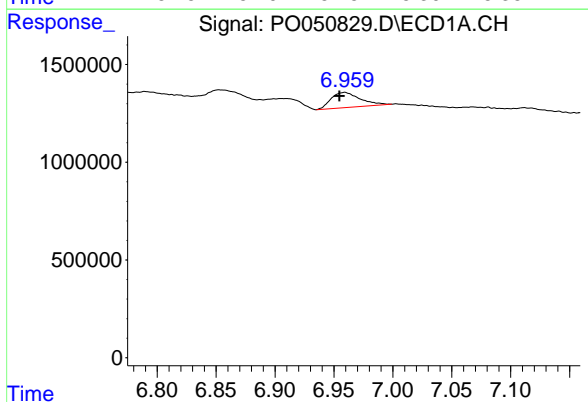
R.T.: 6.589 min
 Delta R.T.: 0.000 min
 Response: 3799766
 Conc: 112.39 ng/ml

Instrument :
 ECD_O
 ClientSampleId :



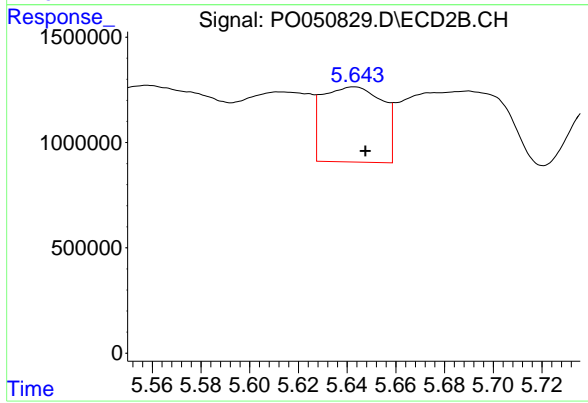
#27 AR-1254-2

R.T.: 5.261 min
 Delta R.T.: -0.003 min
 Response: 915565
 Conc: 52.74 ng/ml



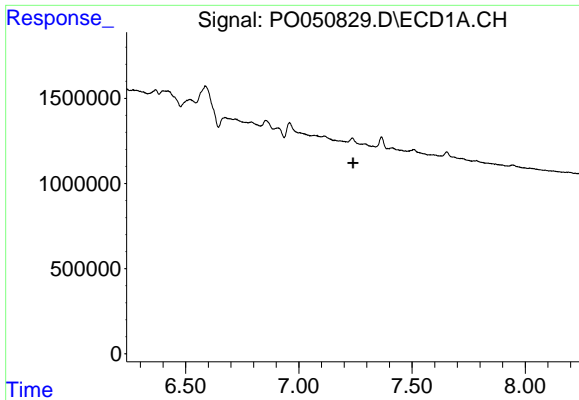
#28 AR-1254-3

R.T.: 6.959 min
 Delta R.T.: 0.005 min
 Response: 1340025
 Conc: 38.48 ng/ml



#28 AR-1254-3

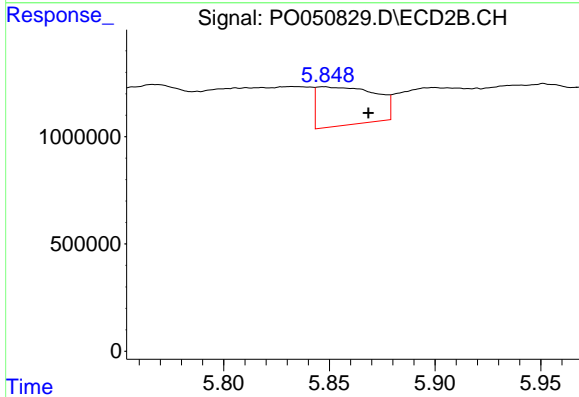
R.T.: 5.643 min
 Delta R.T.: -0.004 min
 Response: 6129008
 Conc: 216.54 ng/ml



#29 AR-1254-4

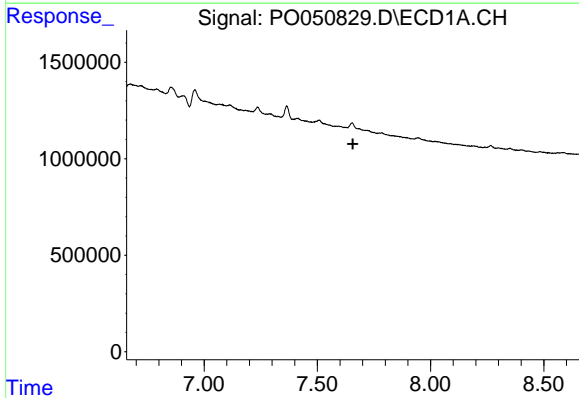
R.T.: 0.000 min
 Exp R.T. : 7.239 min
 Response: 0
 Conc: N.D.

Instrument :
 ECD_O
 ClientSampleId :



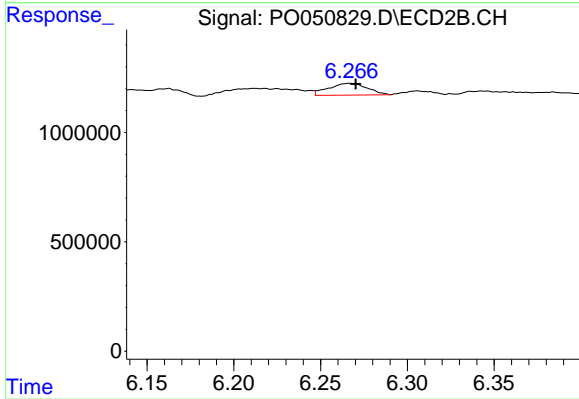
#29 AR-1254-4

R.T.: 5.847 min
 Delta R.T.: -0.021 min
 Response: 3447538
 Conc: 195.05 ng/ml



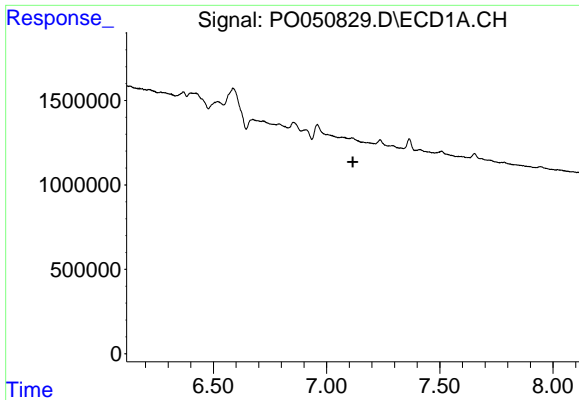
#30 AR-1254-5

R.T.: 0.000 min
 Exp R.T. : 7.657 min
 Response: 0
 Conc: N.D.



#30 AR-1254-5

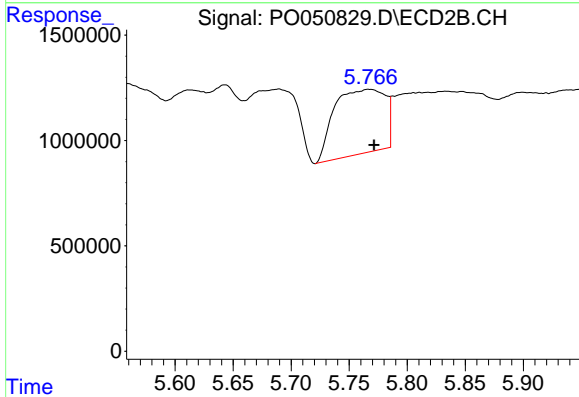
R.T.: 6.267 min
 Delta R.T.: -0.003 min
 Response: 841306
 Conc: 31.47 ng/ml



#31 AR-1260-1

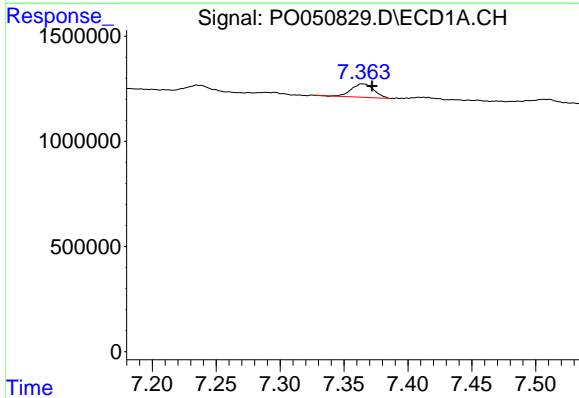
R.T.: 0.000 min
 Exp R.T.: 7.116 min
 Response: 0
 Conc: N.D.

Instrument :
 ECD_O
 ClientSampleId :



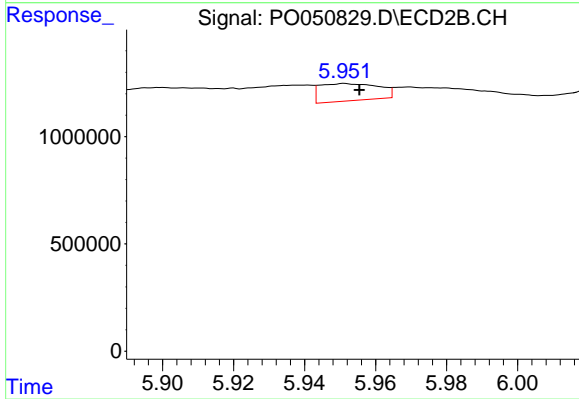
#31 AR-1260-1

R.T.: 5.766 min
 Delta R.T.: -0.005 min
 Response: 9285918
 Conc: 449.12 ng/ml



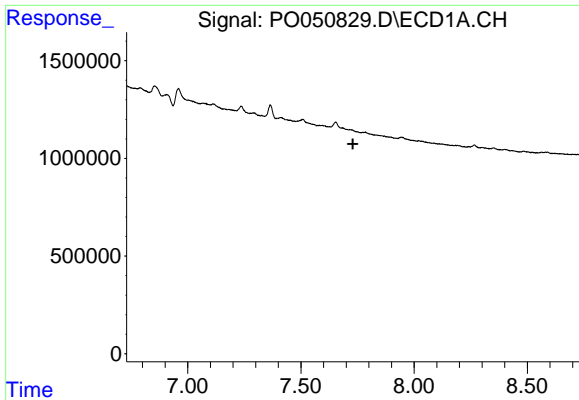
#32 AR-1260-2

R.T.: 7.364 min
 Delta R.T.: -0.008 min
 Response: 786458
 Conc: 26.59 ng/ml



#32 AR-1260-2

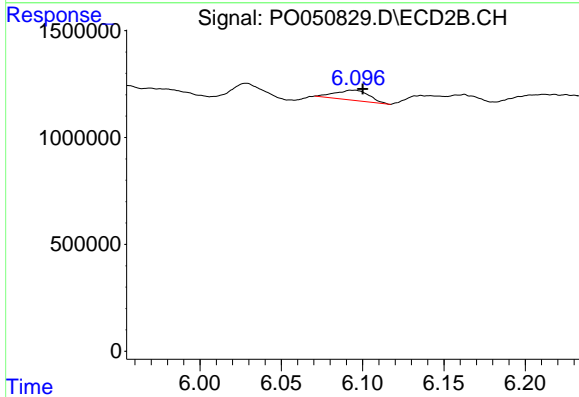
R.T.: 5.951 min
 Delta R.T.: -0.004 min
 Response: 922282
 Conc: 32.12 ng/ml



#33 AR-1260-3

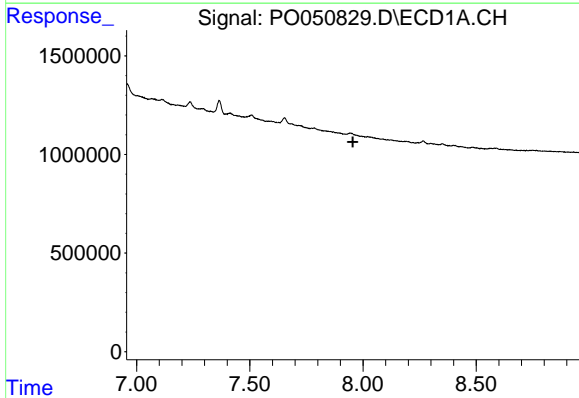
R.T.: 0.000 min
 Exp R.T. : 7.730 min
 Response: 0
 Conc: N.D.

Instrument :
 ECD_O
 ClientSampleId :



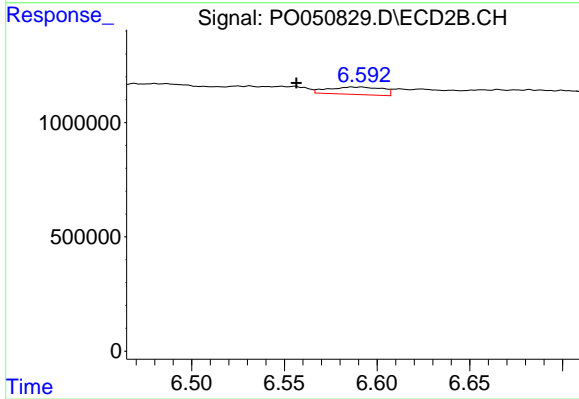
#33 AR-1260-3

R.T.: 6.095 min
 Delta R.T.: -0.005 min
 Response: 689316
 Conc: 27.95 ng/ml



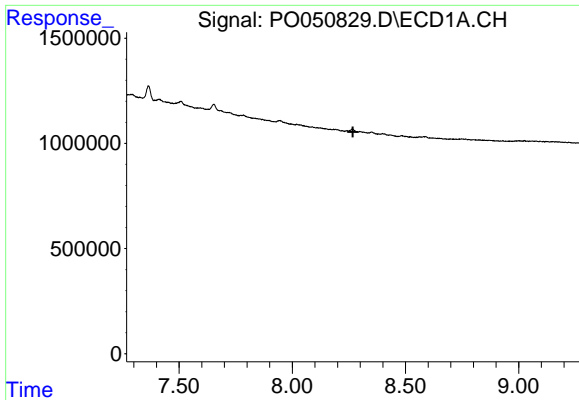
#34 AR-1260-4

R.T.: 0.000 min
 Exp R.T. : 7.955 min
 Response: 0
 Conc: N.D.



#34 AR-1260-4

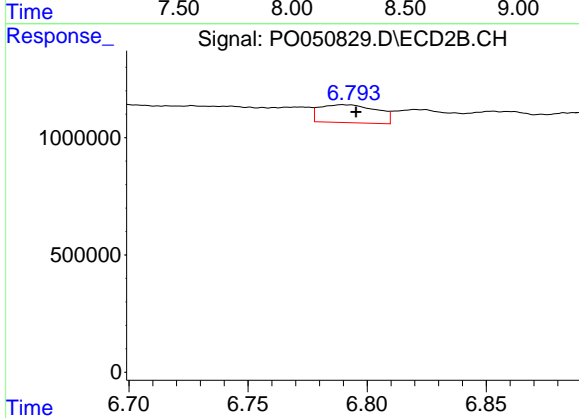
R.T.: 6.586 min
 Delta R.T.: 0.030 min
 Response: 653004
 Conc: 31.66 ng/ml



#35 AR-1260-5

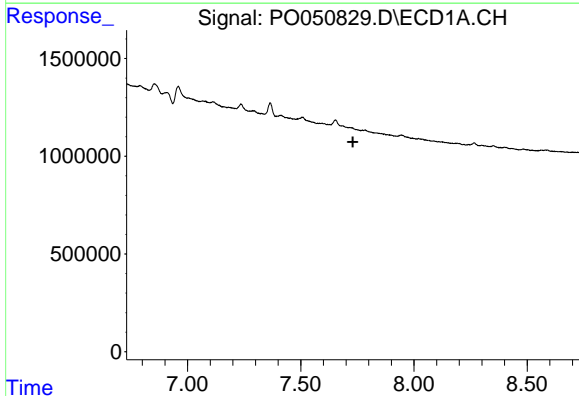
R.T.: 0.000 min
 Exp R.T. : 8.268 min
 Response: 0
 Conc: N.D.

Instrument :
 ECD_O
 ClientSampleId :



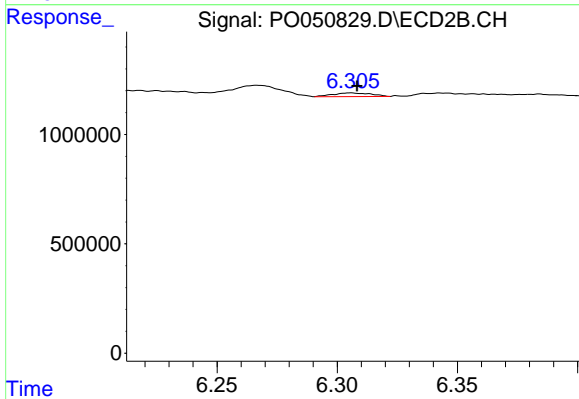
#35 AR-1260-5

R.T.: 6.790 min
 Delta R.T.: -0.006 min
 Response: 1271235
 Conc: 24.46 ng/ml



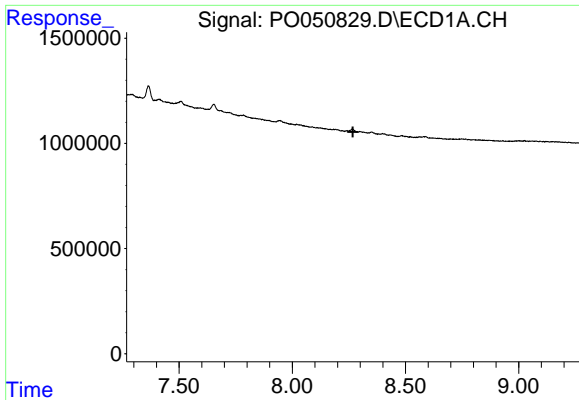
#36 AR-1262-1

R.T.: 0.000 min
 Exp R.T. : 7.730 min
 Response: 0
 Conc: N.D.



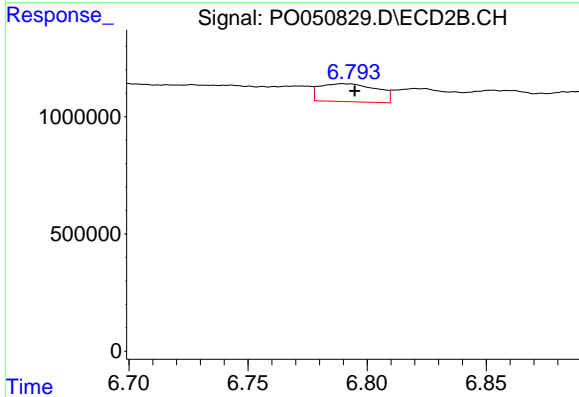
#36 AR-1262-1

R.T.: 6.306 min
 Delta R.T.: -0.003 min
 Response: 187557
 Conc: 6.67 ng/ml

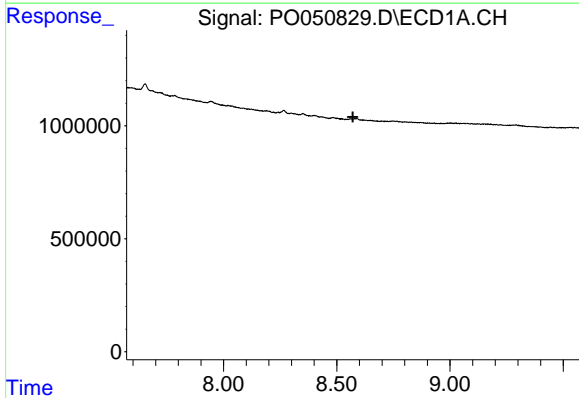


#37 AR-1262-2
 R.T.: 0.000 min
 Exp R.T. : 8.268 min
 Response: 0
 Conc: N.D.

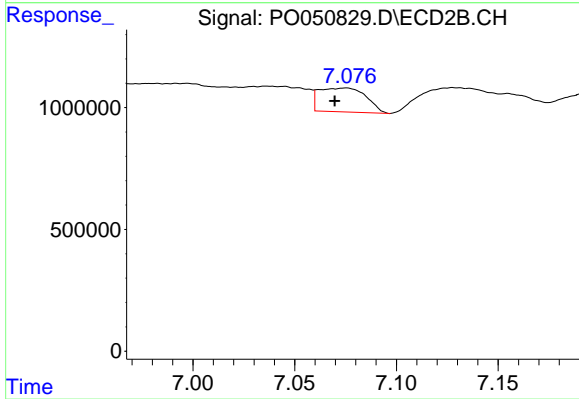
Instrument :
 ECD_O
 ClientSampled :



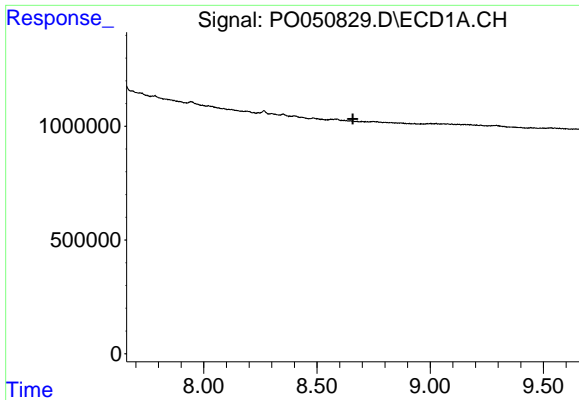
#37 AR-1262-2
 R.T.: 6.790 min
 Delta R.T.: -0.005 min
 Response: 1271235
 Conc: 28.30 ng/ml



#38 AR-1262-3
 R.T.: 0.000 min
 Exp R.T. : 8.571 min
 Response: 0
 Conc: N.D.



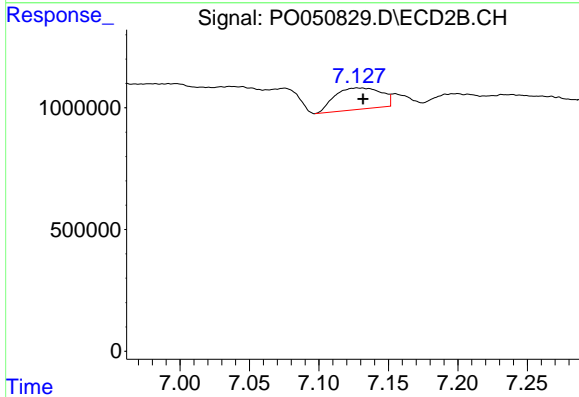
#38 AR-1262-3
 R.T.: 7.075 min
 Delta R.T.: 0.006 min
 Response: 1576388
 Conc: 87.80 ng/ml



#39 AR-1262-4

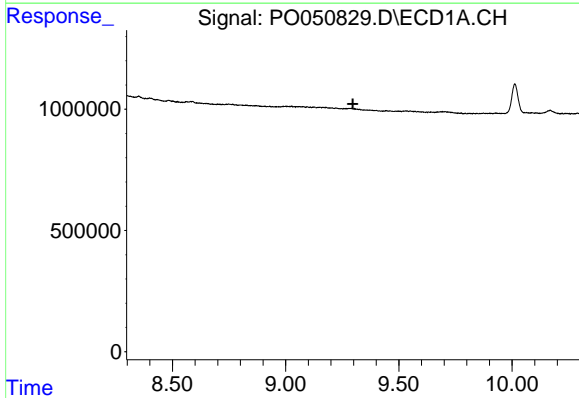
R.T.: 0.000 min
 Exp R.T. : 8.658 min
 Response: 0
 Conc: N.D.

Instrument :
 ECD_O
 ClientSampleId :



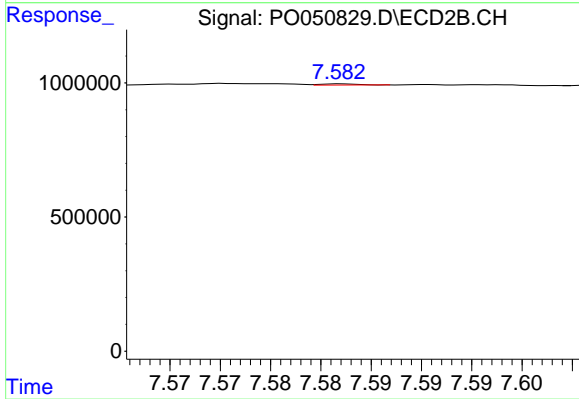
#39 AR-1262-4

R.T.: 7.127 min
 Delta R.T.: -0.004 min
 Response: 2050489
 Conc: 69.70 ng/ml



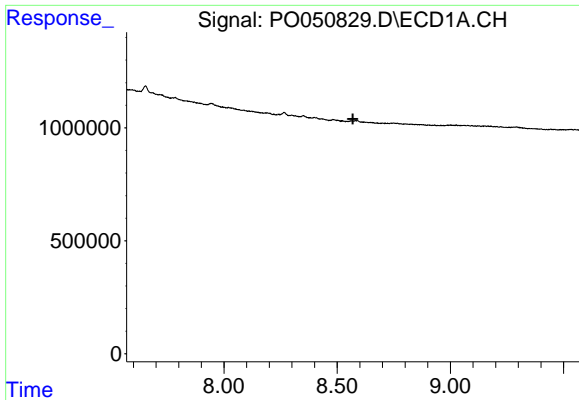
#40 AR-1262-5

R.T.: 0.000 min
 Exp R.T. : 9.297 min
 Response: 0
 Conc: N.D.



#40 AR-1262-5

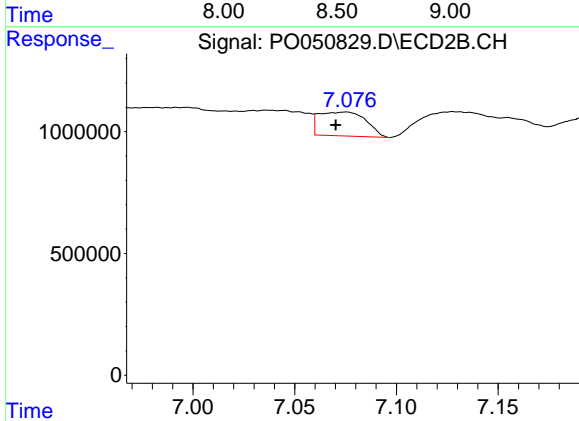
R.T.: 7.582 min
 Delta R.T.: -0.034 min
 Response: 11540
 Conc: 0.99 ng/ml



#41 AR-1268-1

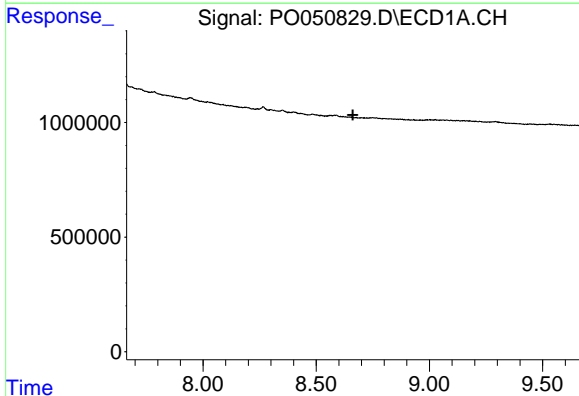
R.T.: 0.000 min
 Exp R.T. : 8.570 min
 Response: 0
 Conc: N.D.

Instrument :
 ECD_O
 ClientSampled :



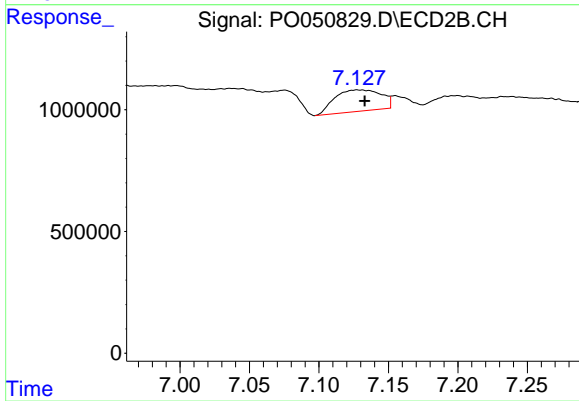
#41 AR-1268-1

R.T.: 7.075 min
 Delta R.T.: 0.005 min
 Response: 1576388
 Conc: 28.62 ng/ml



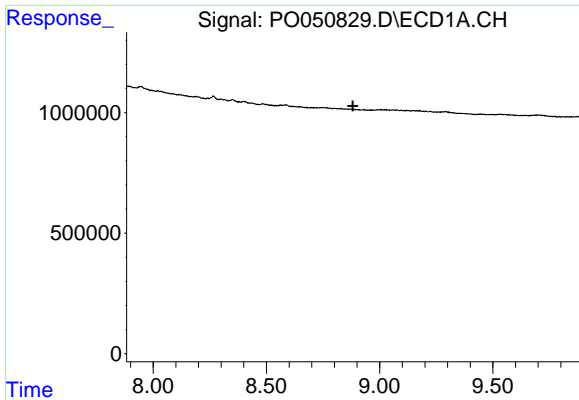
#42 AR-1268-2

R.T.: 0.000 min
 Exp R.T. : 8.662 min
 Response: 0
 Conc: N.D.



#42 AR-1268-2

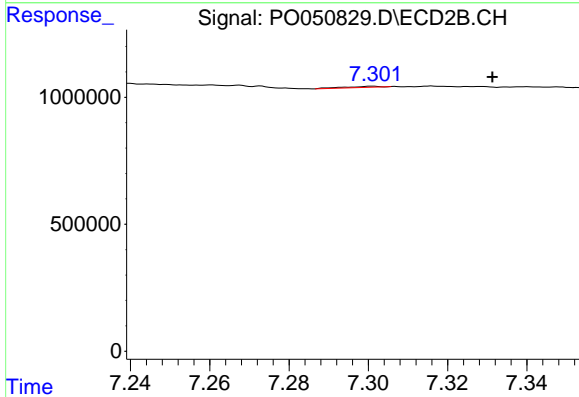
R.T.: 7.127 min
 Delta R.T.: -0.005 min
 Response: 2050489
 Conc: 43.02 ng/ml



#43 AR-1268-3

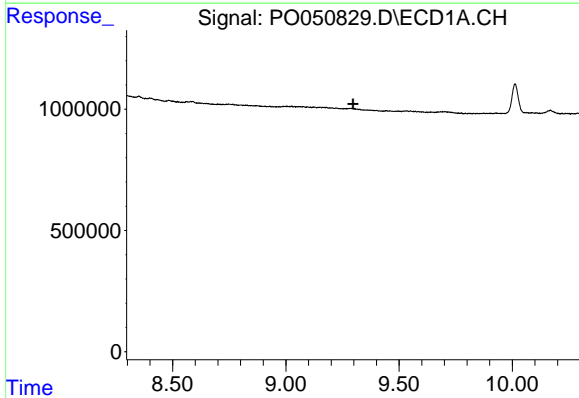
R.T.: 0.000 min
 Exp R.T. : 8.882 min
 Response: 0
 Conc: N.D.

Instrument :
 ECD_O
 ClientSampleId :



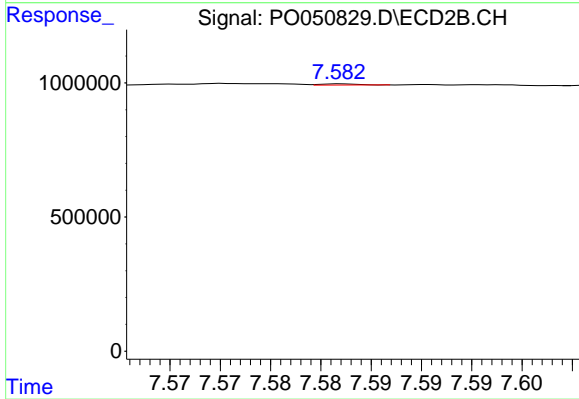
#43 AR-1268-3

R.T.: 7.301 min
 Delta R.T.: -0.030 min
 Response: 30582
 Conc: 0.71 ng/ml



#44 AR-1268-4

R.T.: 0.000 min
 Exp R.T. : 9.296 min
 Response: 0
 Conc: N.D.



#44 AR-1268-4

R.T.: 7.582 min
 Delta R.T.: -0.034 min
 Response: 11540
 Conc: 0.83 ng/ml