

Data Path : Z:\pestpcbsrv\HPCHEM1\ECD_0\Data\PO103118\
 Data File : PO050848.D
 Signal(s) : Signal #1: ECD1A.CH Signal #2: ECD2B.CH
 Acq On : 01 Nov 2018 00:45
 Operator : SM/SJ
 Sample : AR1660CCC500
 Misc :
 ALS Vial : 3 Sample Multiplier: 1

Instrument :
 ECD_O
 ClientSampled :

Integration File signal 1: autoint1.e
 Integration File signal 2: autoint2.e
 Quant Time: Nov 01 01:49:53 2018
 Quant Method : Z:\pestpcbsrv\HPCHEM1\ECD_0\methods\PO102918.M
 Quant Title : GC EXTRACTABLES
 QLast Update : Tue Oct 30 07:48:38 2018
 Response via : Initial Calibration
 Integrator: ChemStation 6890 Scale Mode: Small noise peaks clipped

Volume Inj. : 2 µl
 Signal #1 Phase : ZB-MR1 Signal #2 Phase: ZB-MR2
 Signal #1 Info : 30Mx0.32mmx 0.50µ Signal #2 Info : 30M x 0.32mm x 0.25µm

Compound	RT#1	RT#2	Resp#1	Resp#2	ng/ml	ng/ml
System Monitoring Compounds						
1) SA Tetrachlo...	4.354	3.347	35061307	16096353	70.143	74.056
2) SA Decachlor...	10.013	8.093	16083518	10469950	51.745	40.932
Target Compounds						
3) L1 AR-1016-1	5.517	4.364	10353466	5892234	542.758	641.179
4) L1 AR-1016-2	5.539	4.380	15117732	10223772	542.589	659.764
5) L1 AR-1016-3	5.601	4.544	8681930	4937808	527.462	616.480
6) L1 AR-1016-4	5.700	4.588	7228900	3846071	538.414	632.085
7) L1 AR-1016-5	5.993	4.786	6902084	4705788	511.564	545.311
8) L2 AR-1221-1	4.557	3.551	1192344	452173	246.804	267.506
9) L2 AR-1221-2	4.649	3.629	1555851	737162	513.497	579.237
10) L2 AR-1221-3	4.725	3.700	5740853	2903238	482.490	678.863 #
11) L3 AR-1232-1	4.725	3.700	5740853	2903238	670.648	726.248
12) L3 AR-1232-2	5.251	4.380	8342940	10223772	1790.398	2137.225
13) L3 AR-1232-3	5.539	4.544	15117732	4937808	1642.650	1893.578
14) L3 AR-1232-4	5.700	4.625	7228900	4597848	1601.306	2062.500 #
15) L3 AR-1232-5	5.789	4.786	5746761	4705788	1936.312	1769.278
16) L4 AR-1242-1	5.517	4.364	10353466	5892234	821.422	1003.984
17) L4 AR-1242-2	5.539	4.380	15117732	10223772	819.243	1023.363
18) L4 AR-1242-3	5.601	4.544	8681930	4937808	813.528	977.851
19) L4 AR-1242-4	5.700	4.625	7228900	4597848	830.717	962.504
20) L4 AR-1242-5	6.434	5.119	1327518	4830142	142.320	749.731 #
21) L5 AR-1248-1	5.517	4.364	10353466	5892234	1065.403	1277.183
22) L5 AR-1248-2	5.789	4.588	5746761	3846071	443.649	552.218
23) L5 AR-1248-3	5.993	4.625	6902084	4597848	456.015	657.759 #
24) L5 AR-1248-4	6.394	4.786	1447526	4705788	86.827	504.308 #
25) L5 AR-1248-5	6.434	5.158	1327518	914705	85.037	95.135
26) L6 AR-1254-1	6.367	5.119	4323269	4830142	196.883	251.913 #
27) L6 AR-1254-2	6.585	5.262	4836579	3622308	143.051	208.666 #
28) L6 AR-1254-3	6.951	5.660	2197613	7313698	63.108	258.396 #
29) L6 AR-1254-4	7.235	5.866	1289446	627012	55.748	35.474 #
30) L6 AR-1254-5	7.652	6.266	14292610	12286030	582.132	459.527
31) L7 AR-1260-1	7.113	5.770	10993077	9902225	427.318	478.930
32) L7 AR-1260-2	7.369	5.954	12953051	13040036	437.863	454.109
33) L7 AR-1260-3	7.727	6.098	9176635	10765593	432.995	436.548
34) L7 AR-1260-4	7.952	6.554	9846065	8343655	430.281	404.532
35) L7 AR-1260-5	8.265	6.793	19754978	21622356	448.516	416.114
36) L8 AR-1262-1	7.727	6.305	9176635	11101974	371.969	394.529
37) L8 AR-1262-2	8.265	6.793	19754978	21622356	504.750	481.329
38) L8 AR-1262-3	8.584	7.067	11718570	4394067	463.848	244.737 #
39) L8 AR-1262-4	8.652	7.128	3477215	13185851	177.170	448.200 #
40) L8 AR-1262-5	9.292	7.613	5032342	4033480	417.516	347.553
41) L9 AR-1268-1	8.584	7.067	11718570	4394067	232.269	79.781 #

Data Path : Z:\pestpcbsrv\HPCHEM1\ECD_0\Data\PO103118\
 Data File : PO050848.D
 Signal(s) : Signal #1: ECD1A.CH Signal #2: ECD2B.CH
 Acq On : 01 Nov 2018 00:45
 Operator : SM/SJ
 Sample : AR1660CCC500
 Misc :
 ALS Vial : 3 Sample Multiplier: 1

Instrument :
 ECD_0
 ClientSampleId :

Integration File signal 1: autoint1.e
 Integration File signal 2: autoint2.e
 Quant Time: Nov 01 01:49:53 2018
 Quant Method : Z:\pestpcbsrv\HPCHEM1\ECD_0\methods\PO102918.M
 Quant Title : GC EXTRACTABLES
 QLast Update : Tue Oct 30 07:48:38 2018
 Response via : Initial Calibration
 Integrator: ChemStation 6890 Scale Mode: Small noise peaks clipped

Volume Inj. : 2 µl
 Signal #1 Phase : ZB-MR1 Signal #2 Phase: ZB-MR2
 Signal #1 Info : 30Mx0.32mmx 0.50µ Signal #2 Info : 30M x 0.32mm x 0.25µm

	Compound	RT#1	RT#2	Resp#1	Resp#2	ng/ml	ng/ml
42)	L9 AR-1268-2	8.652	7.128	3477215	13185851	76.445	276.628 #
43)	L9 AR-1268-3	0.000	7.326	0	151108	N.D.	3.508 #
44)	L9 AR-1268-4	9.292	7.613	5032342	4033480	355.257	288.716
45)	L9 AR-1268-5	9.689	7.878	1298940	941454	10.785	9.393

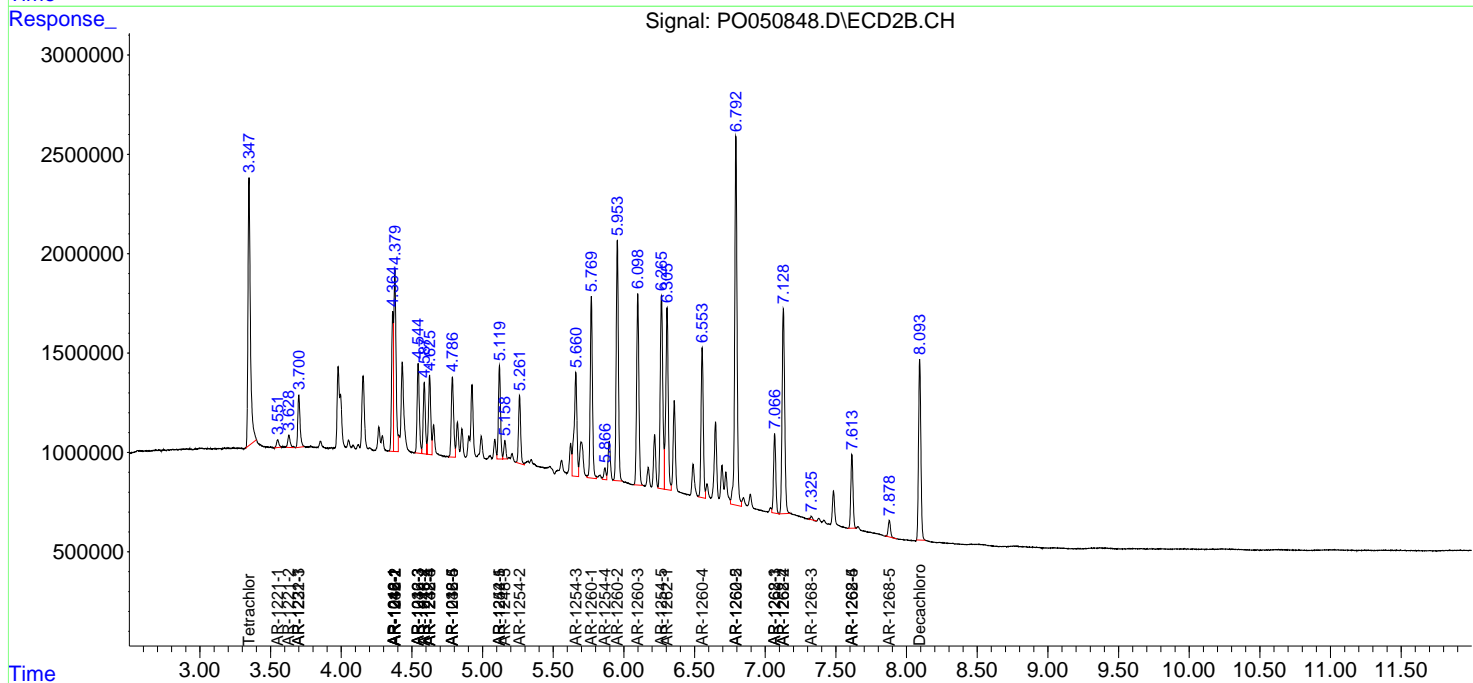
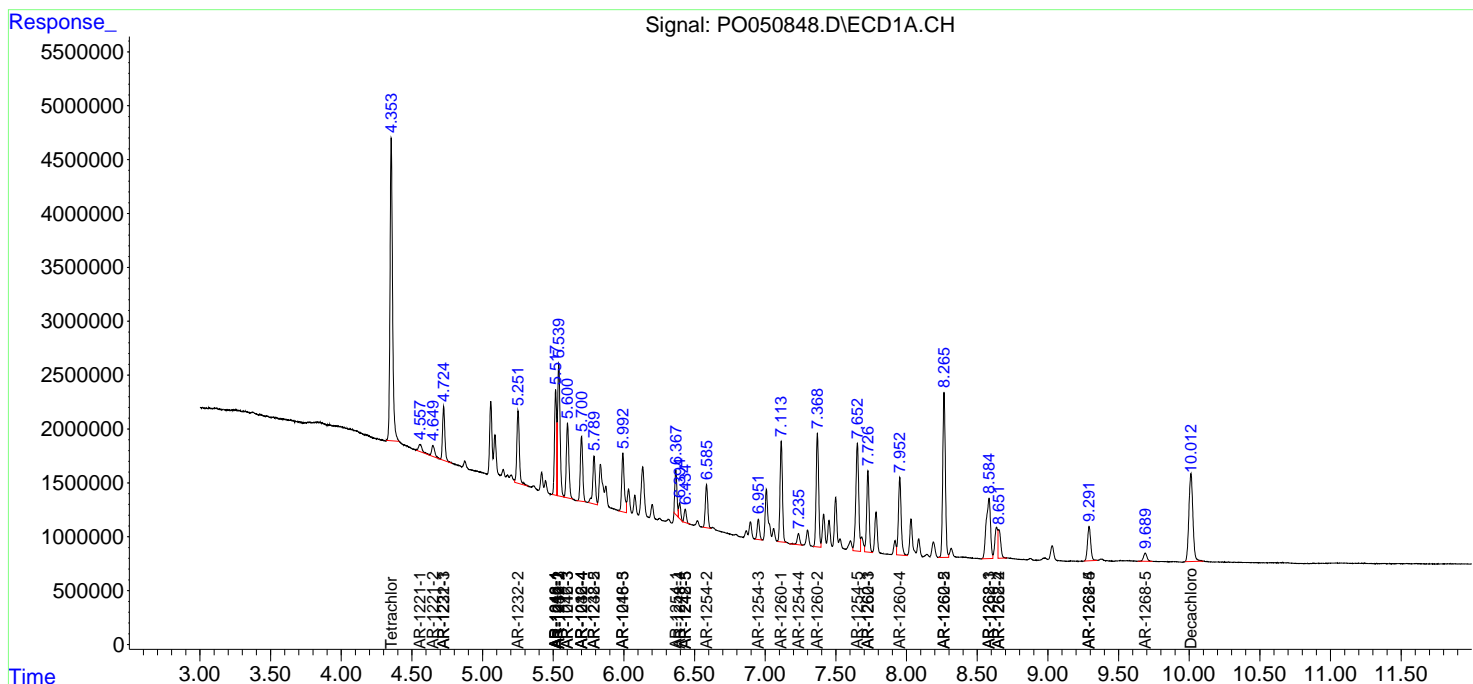
(f)=RT Delta > 1/2 Window (#)=Amounts differ by > 25% (m)=manual int.

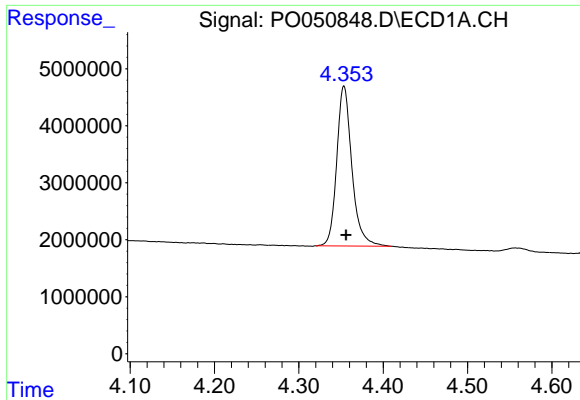
Data Path : Z:\pestpcbsrv\HPCHEM1\ECD_O\Data\PO103118\
 Data File : PO050848.D
 Signal(s) : Signal #1: ECD1A.CH Signal #2: ECD2B.CH
 Acq On : 01 Nov 2018 00:45
 Operator : SM/SJ
 Sample : AR1660CCC500
 Misc :
 ALS Vial : 3 Sample Multiplier: 1

Instrument :
 ECD_O
 ClientSampled :

Integration File signal 1: autoint1.e
 Integration File signal 2: autoint2.e
 Quant Time: Nov 01 01:49:53 2018
 Quant Method : Z:\pestpcbsrv\HPCHEM1\ECD_O\methods\PO102918.M
 Quant Title : GC EXTRACTABLES
 QLast Update : Tue Oct 30 07:48:38 2018
 Response via : Initial Calibration
 Integrator: ChemStation 6890 Scale Mode: Small noise peaks clipped

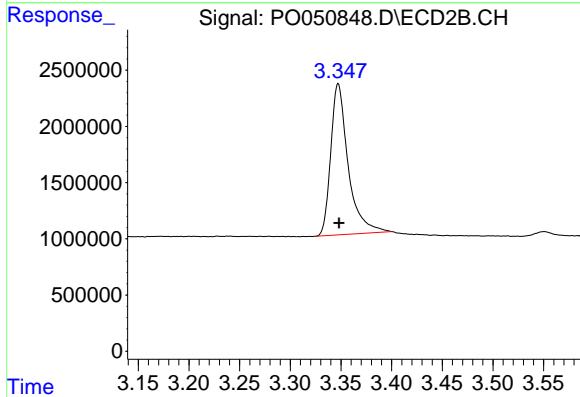
Volume Inj. : 2 µl
 Signal #1 Phase : ZB-MR1 Signal #2 Phase: ZB-MR2
 Signal #1 Info : 30Mx0.32mmx 0.50µ Signal #2 Info : 30M x 0.32mm x 0.25µm



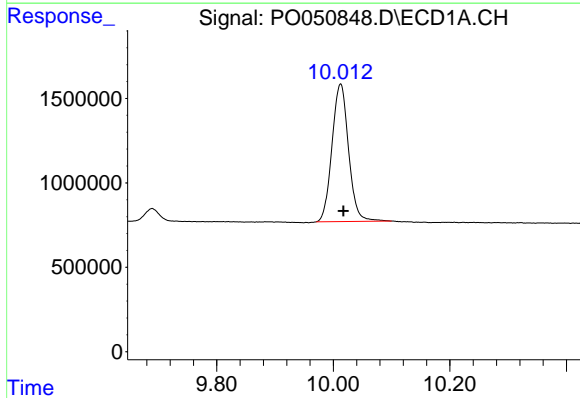


#1 Tetrachloro-m-xylene
 R.T.: 4.354 min
 Delta R.T.: -0.002 min
 Response: 35061307
 Conc: 70.14 ng/ml

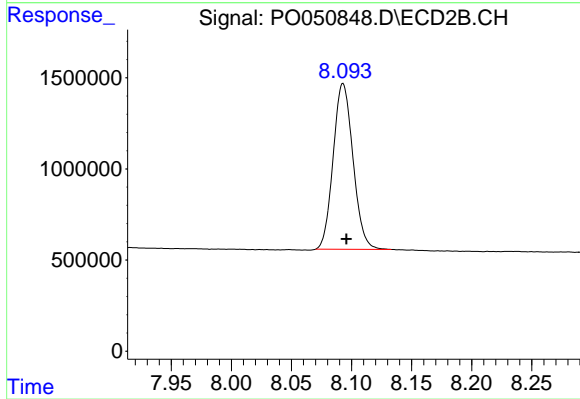
Instrument :
 ECD_O
 ClientSampleId :



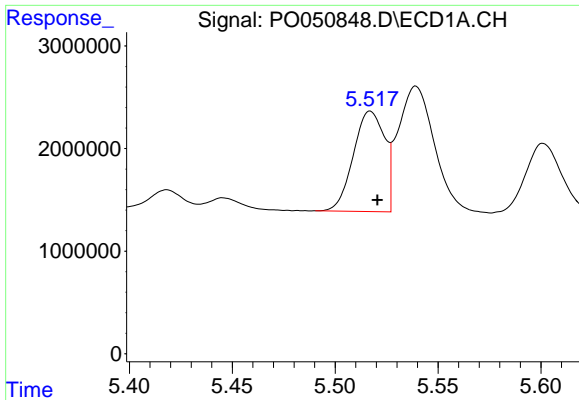
#1 Tetrachloro-m-xylene
 R.T.: 3.347 min
 Delta R.T.: 0.000 min
 Response: 16096353
 Conc: 74.06 ng/ml



#2 Decachlorobiphenyl
 R.T.: 10.013 min
 Delta R.T.: -0.005 min
 Response: 16083518
 Conc: 51.74 ng/ml



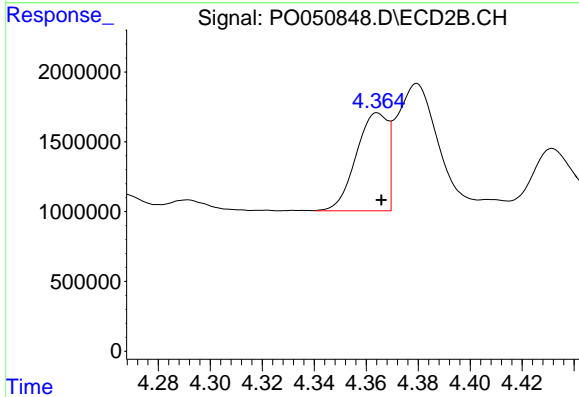
#2 Decachlorobiphenyl
 R.T.: 8.093 min
 Delta R.T.: -0.003 min
 Response: 10469950
 Conc: 40.93 ng/ml



#3 AR-1016-1

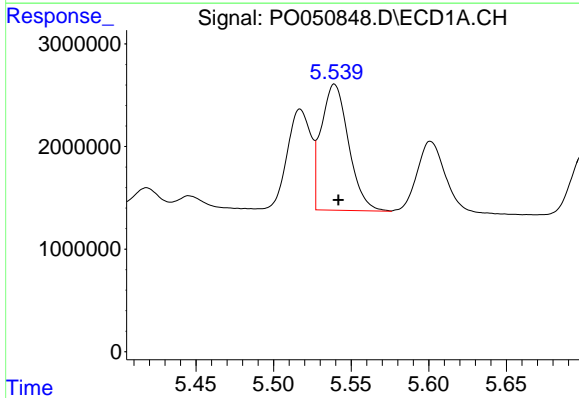
R.T.: 5.517 min
 Delta R.T.: -0.003 min
 Response: 10353466
 Conc: 542.76 ng/ml

Instrument :
 ECD_O
 ClientSampleId :



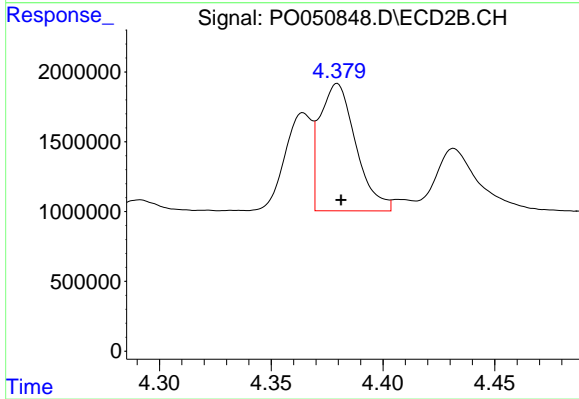
#3 AR-1016-1

R.T.: 4.364 min
 Delta R.T.: -0.002 min
 Response: 5892234
 Conc: 641.18 ng/ml



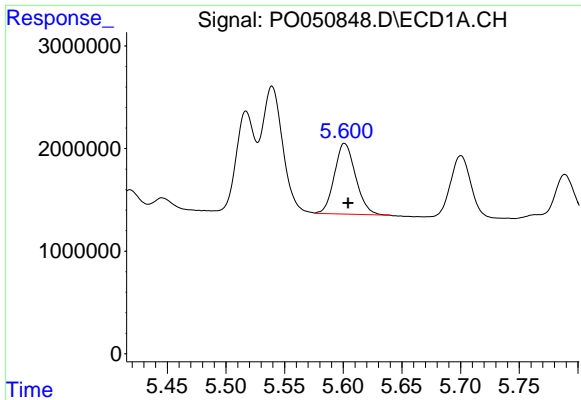
#4 AR-1016-2

R.T.: 5.539 min
 Delta R.T.: -0.003 min
 Response: 15117732
 Conc: 542.59 ng/ml



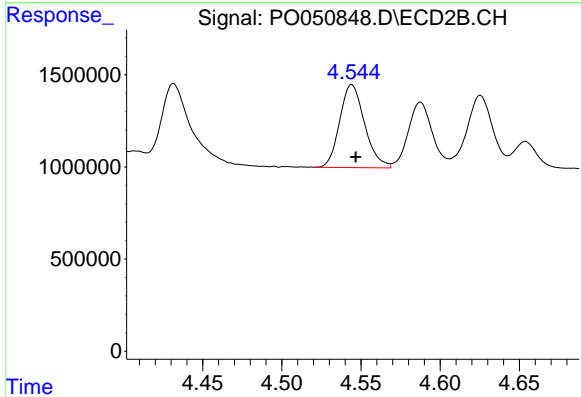
#4 AR-1016-2

R.T.: 4.380 min
 Delta R.T.: -0.002 min
 Response: 10223772
 Conc: 659.76 ng/ml

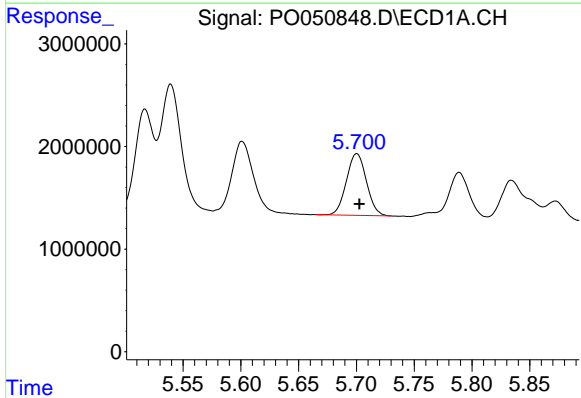


#5 AR-1016-3
 R.T.: 5.601 min
 Delta R.T.: -0.003 min
 Response: 8681930
 Conc: 527.46 ng/ml

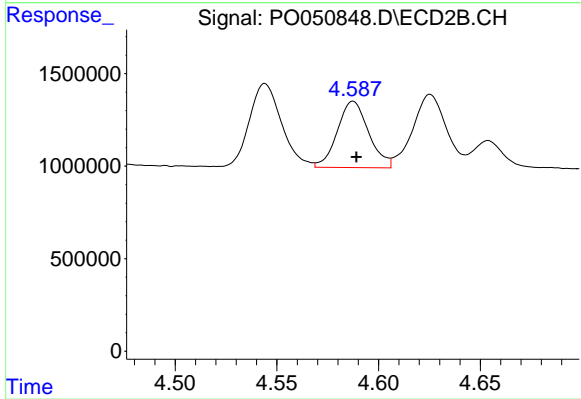
Instrument :
 ECD_O
 ClientSampleId :



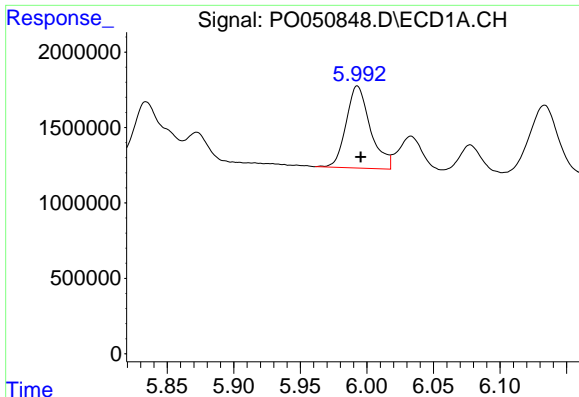
#5 AR-1016-3
 R.T.: 4.544 min
 Delta R.T.: -0.002 min
 Response: 4937808
 Conc: 616.48 ng/ml



#6 AR-1016-4
 R.T.: 5.700 min
 Delta R.T.: -0.002 min
 Response: 7228900
 Conc: 538.41 ng/ml



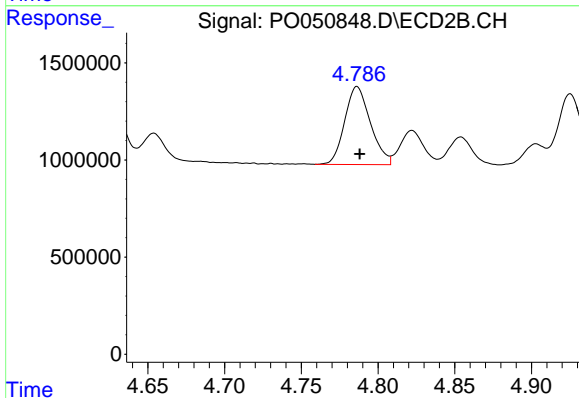
#6 AR-1016-4
 R.T.: 4.588 min
 Delta R.T.: -0.002 min
 Response: 3846071
 Conc: 632.09 ng/ml



#7 AR-1016-5

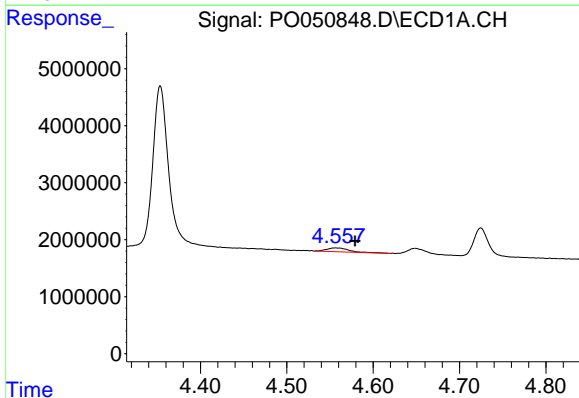
R.T.: 5.993 min
 Delta R.T.: -0.003 min
 Response: 6902084
 Conc: 511.56 ng/ml

Instrument :
 ECD_O
 ClientSampleId :



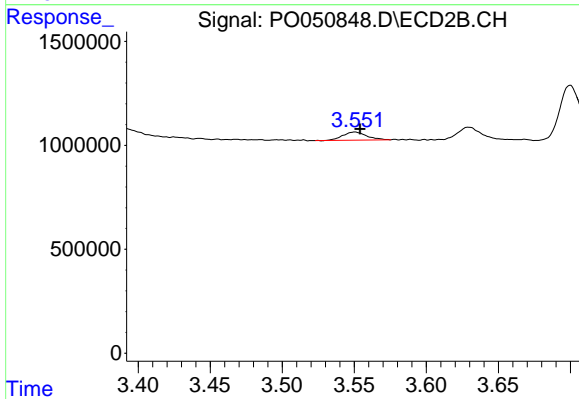
#7 AR-1016-5

R.T.: 4.786 min
 Delta R.T.: -0.002 min
 Response: 4705788
 Conc: 545.31 ng/ml



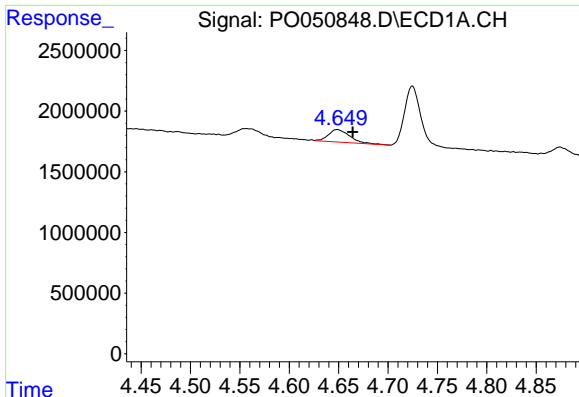
#8 AR-1221-1

R.T.: 4.557 min
 Delta R.T.: -0.022 min
 Response: 1192344
 Conc: 246.80 ng/ml



#8 AR-1221-1

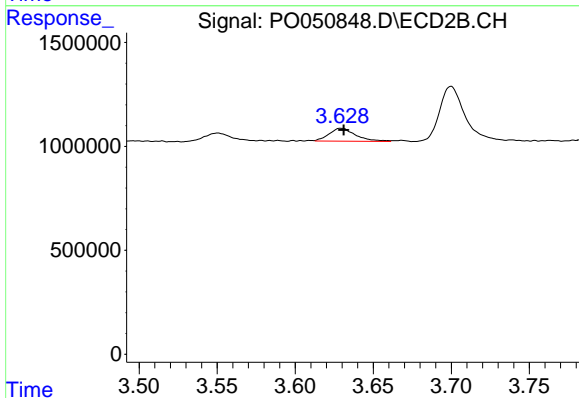
R.T.: 3.551 min
 Delta R.T.: -0.003 min
 Response: 452173
 Conc: 267.51 ng/ml



#9 AR-1221-2

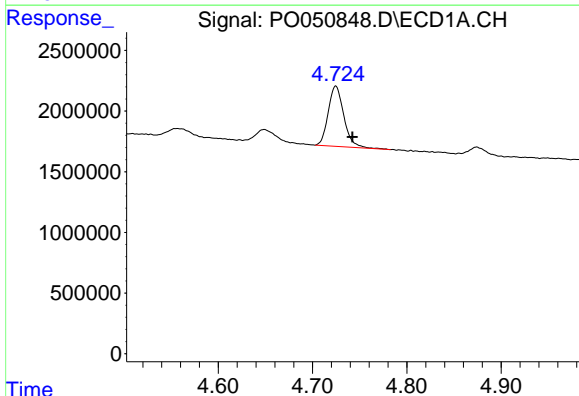
R.T.: 4.649 min
 Delta R.T.: -0.015 min
 Response: 1555851
 Conc: 513.50 ng/ml

Instrument :
 ECD_O
 ClientSampleId :



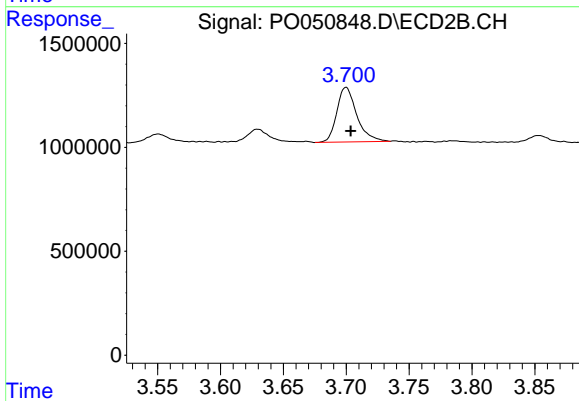
#9 AR-1221-2

R.T.: 3.629 min
 Delta R.T.: -0.002 min
 Response: 737162
 Conc: 579.24 ng/ml



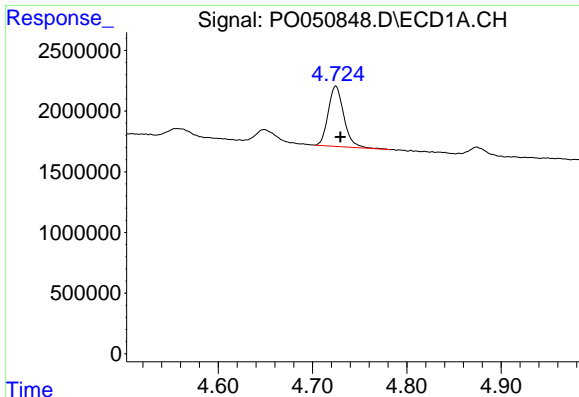
#10 AR-1221-3

R.T.: 4.725 min
 Delta R.T.: -0.018 min
 Response: 5740853
 Conc: 482.49 ng/ml



#10 AR-1221-3

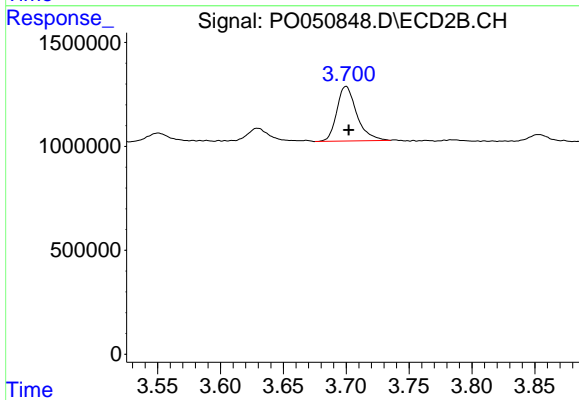
R.T.: 3.700 min
 Delta R.T.: -0.004 min
 Response: 2903238
 Conc: 678.86 ng/ml



#11 AR-1232-1

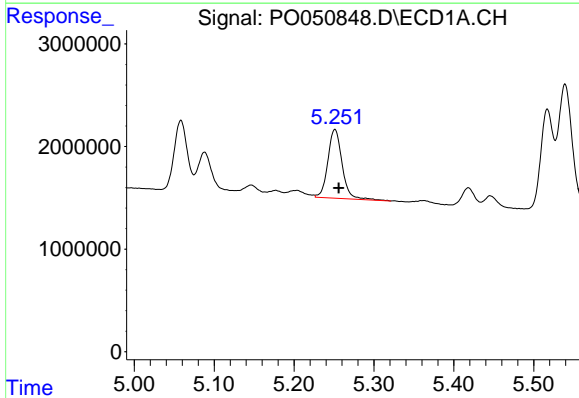
R.T.: 4.725 min
 Delta R.T.: -0.005 min
 Response: 5740853
 Conc: 670.65 ng/ml

Instrument :
 ECD_O
 ClientSampleId :



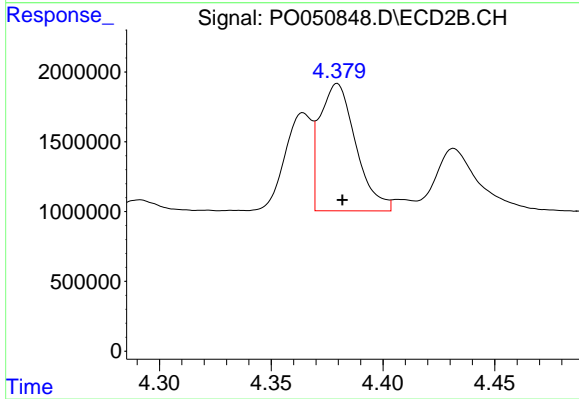
#11 AR-1232-1

R.T.: 3.700 min
 Delta R.T.: -0.002 min
 Response: 2903238
 Conc: 726.25 ng/ml



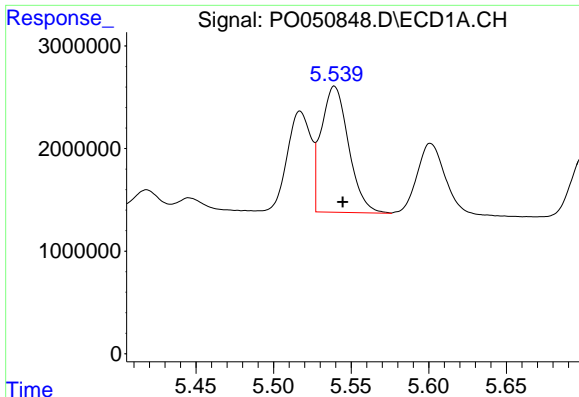
#12 AR-1232-2

R.T.: 5.251 min
 Delta R.T.: -0.004 min
 Response: 8342940
 Conc: 1790.40 ng/ml



#12 AR-1232-2

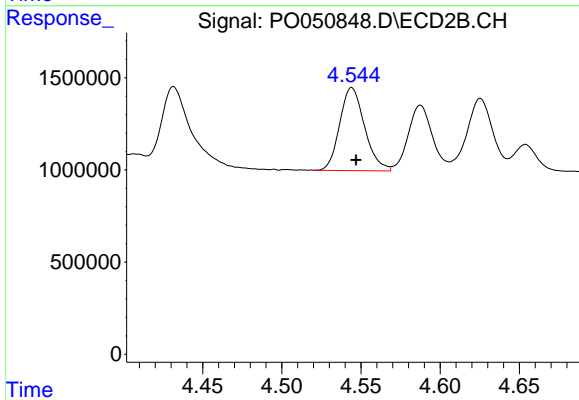
R.T.: 4.380 min
 Delta R.T.: -0.002 min
 Response: 10223772
 Conc: 2137.23 ng/ml



#13 AR-1232-3

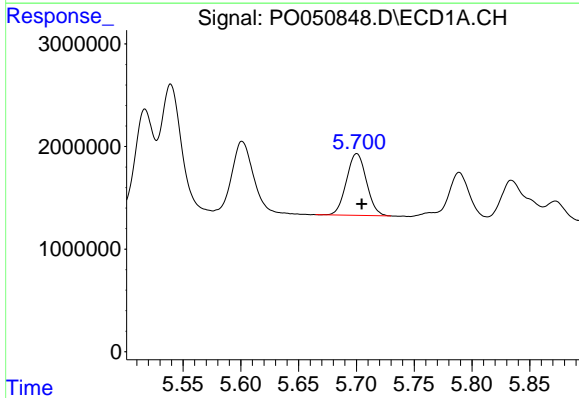
R.T.: 5.539 min
 Delta R.T.: -0.005 min
 Response: 15117732
 Conc: 1642.65 ng/ml

Instrument :
 ECD_O
 ClientSampleId :



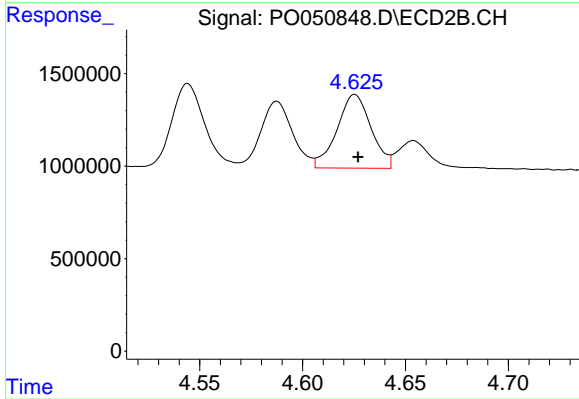
#13 AR-1232-3

R.T.: 4.544 min
 Delta R.T.: -0.003 min
 Response: 4937808
 Conc: 1893.58 ng/ml



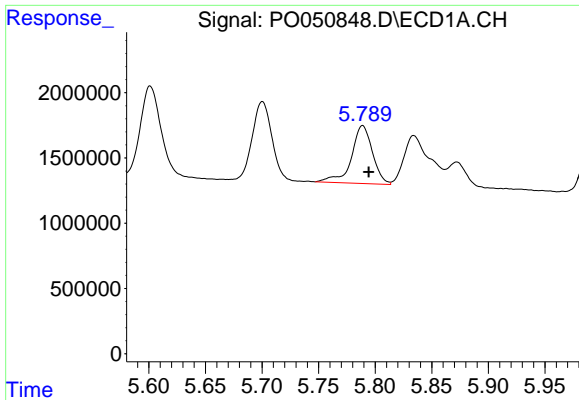
#14 AR-1232-4

R.T.: 5.700 min
 Delta R.T.: -0.004 min
 Response: 7228900
 Conc: 1601.31 ng/ml



#14 AR-1232-4

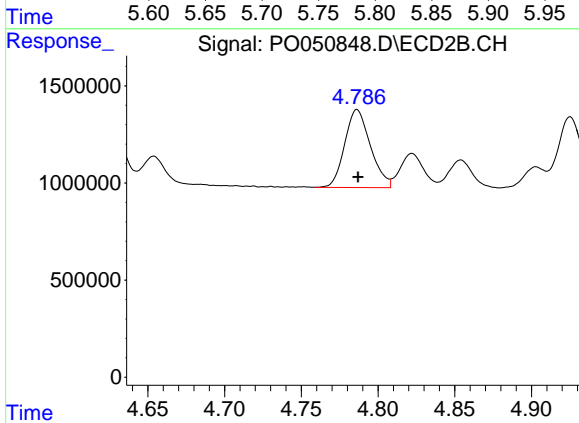
R.T.: 4.625 min
 Delta R.T.: -0.002 min
 Response: 4597848
 Conc: 2062.50 ng/ml



#15 AR-1232-5

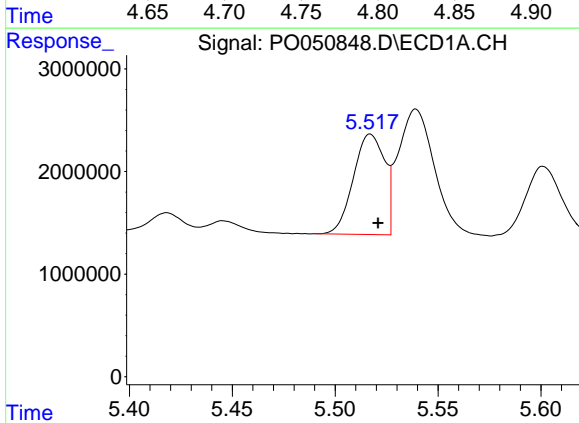
R.T.: 5.789 min
 Delta R.T.: -0.005 min
 Response: 5746761
 Conc: 1936.31 ng/ml

Instrument :
 ECD_O
 ClientSampleId :



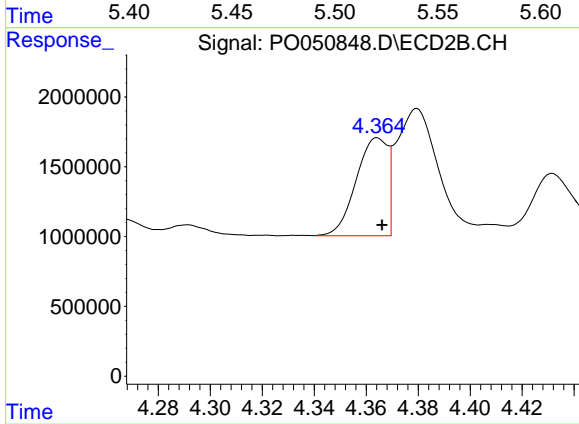
#15 AR-1232-5

R.T.: 4.786 min
 Delta R.T.: 0.000 min
 Response: 4705788
 Conc: 1769.28 ng/ml



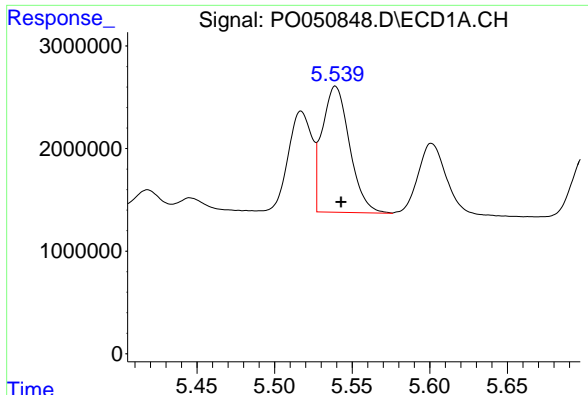
#16 AR-1242-1

R.T.: 5.517 min
 Delta R.T.: -0.004 min
 Response: 10353466
 Conc: 821.42 ng/ml



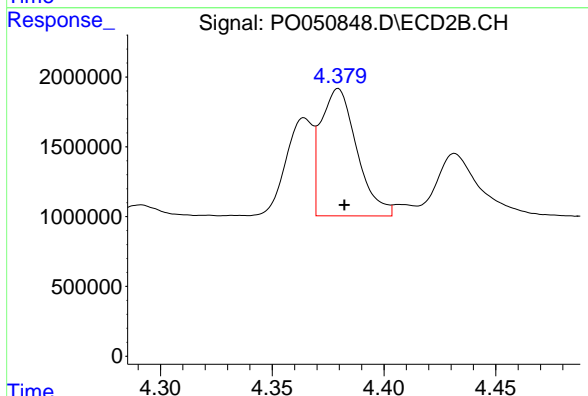
#16 AR-1242-1

R.T.: 4.364 min
 Delta R.T.: -0.002 min
 Response: 5892234
 Conc: 1003.98 ng/ml

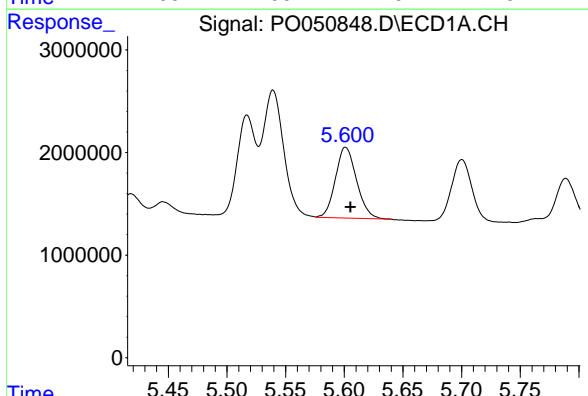


#17 AR-1242-2
 R.T.: 5.539 min
 Delta R.T.: -0.004 min
 Response: 15117732
 Conc: 819.24 ng/ml

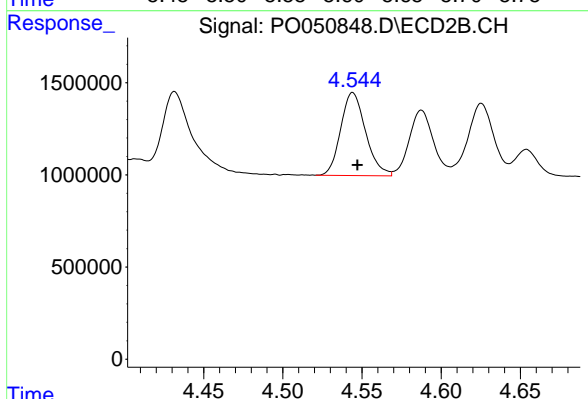
Instrument :
 ECD_O
 ClientSampled :



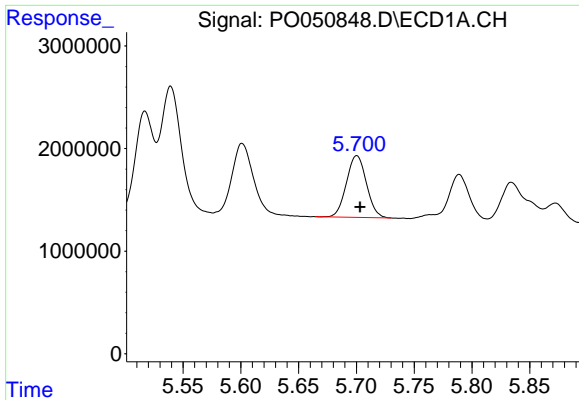
#17 AR-1242-2
 R.T.: 4.380 min
 Delta R.T.: -0.003 min
 Response: 10223772
 Conc: 1023.36 ng/ml



#18 AR-1242-3
 R.T.: 5.601 min
 Delta R.T.: -0.004 min
 Response: 8681930
 Conc: 813.53 ng/ml

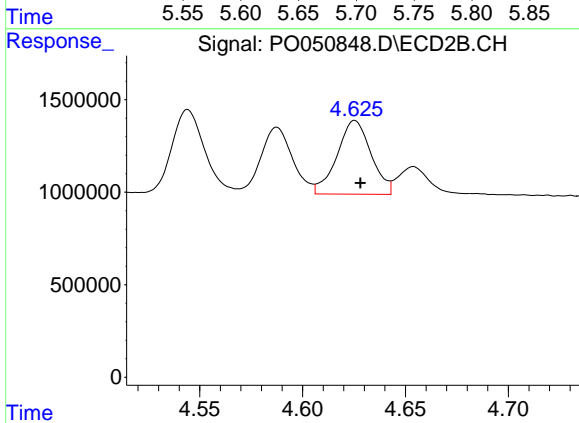


#18 AR-1242-3
 R.T.: 4.544 min
 Delta R.T.: -0.003 min
 Response: 4937808
 Conc: 977.85 ng/ml

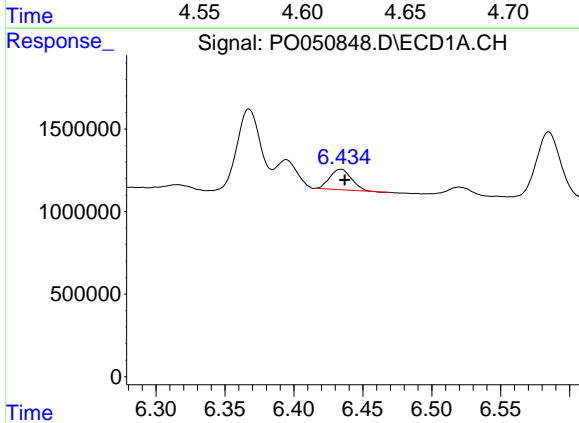


#19 AR-1242-4
 R.T.: 5.700 min
 Delta R.T.: -0.003 min
 Response: 7228900
 Conc: 830.72 ng/ml

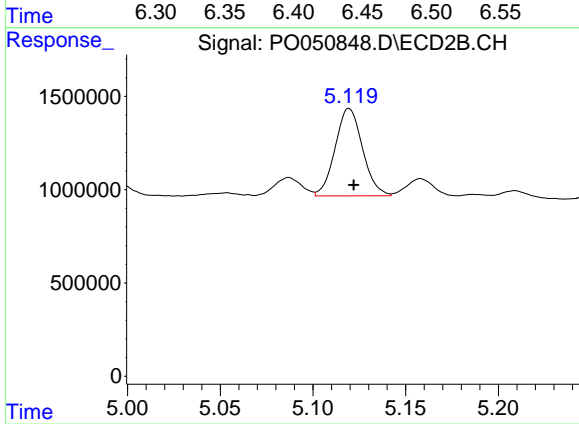
Instrument :
 ECD_O
 ClientSampled :



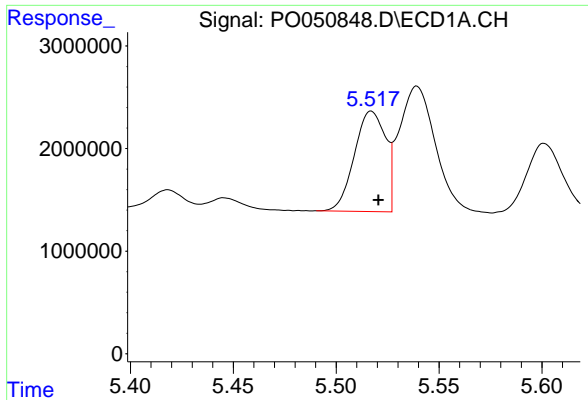
#19 AR-1242-4
 R.T.: 4.625 min
 Delta R.T.: -0.003 min
 Response: 4597848
 Conc: 962.50 ng/ml



#20 AR-1242-5
 R.T.: 6.434 min
 Delta R.T.: -0.003 min
 Response: 1327518
 Conc: 142.32 ng/ml

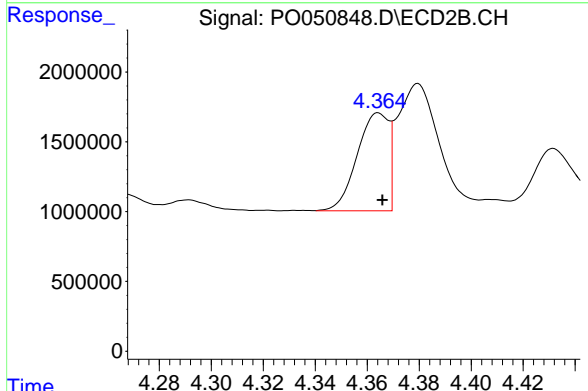


#20 AR-1242-5
 R.T.: 5.119 min
 Delta R.T.: -0.003 min
 Response: 4830142
 Conc: 749.73 ng/ml

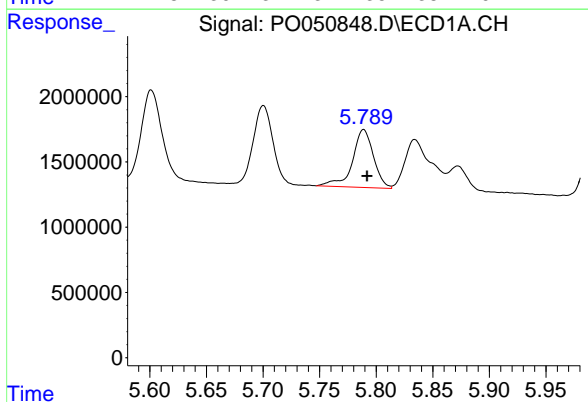


#21 AR-1248-1
 R.T.: 5.517 min
 Delta R.T.: -0.003 min
 Response: 10353466
 Conc: 1065.40 ng/ml

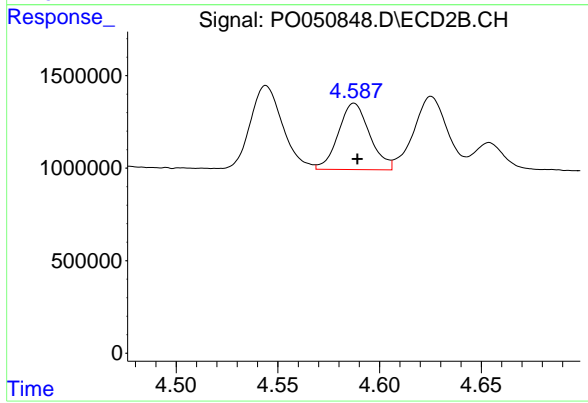
Instrument :
 ECD_O
 ClientSampleId :



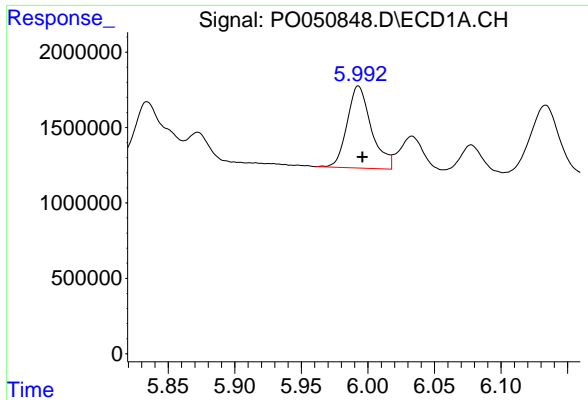
#21 AR-1248-1
 R.T.: 4.364 min
 Delta R.T.: -0.002 min
 Response: 5892234
 Conc: 1277.18 ng/ml



#22 AR-1248-2
 R.T.: 5.789 min
 Delta R.T.: -0.003 min
 Response: 5746761
 Conc: 443.65 ng/ml

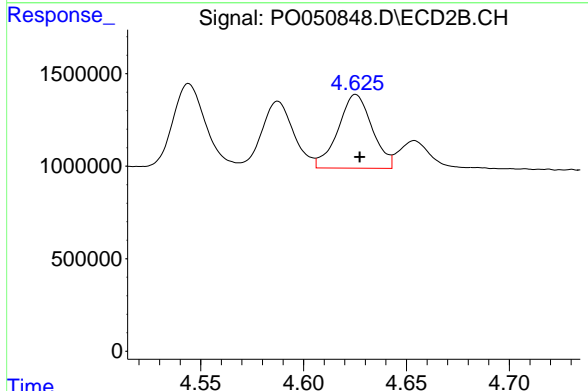


#22 AR-1248-2
 R.T.: 4.588 min
 Delta R.T.: -0.002 min
 Response: 3846071
 Conc: 552.22 ng/ml

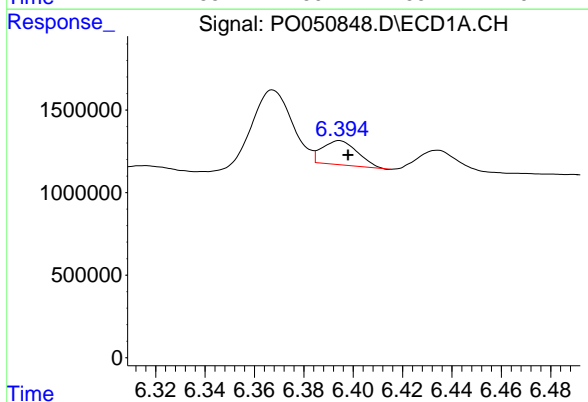


#23 AR-1248-3
 R.T.: 5.993 min
 Delta R.T.: -0.003 min
 Response: 6902084
 Conc: 456.01 ng/ml

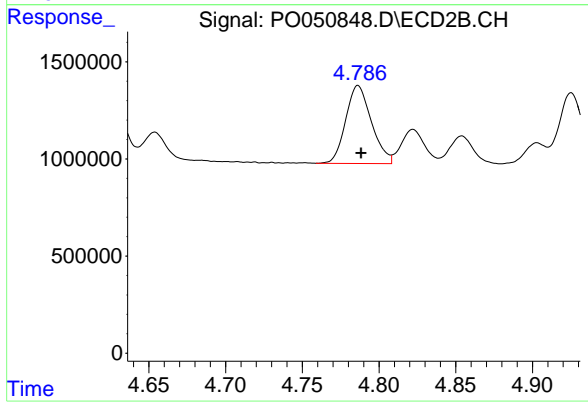
Instrument :
 ECD_O
 ClientSampled :



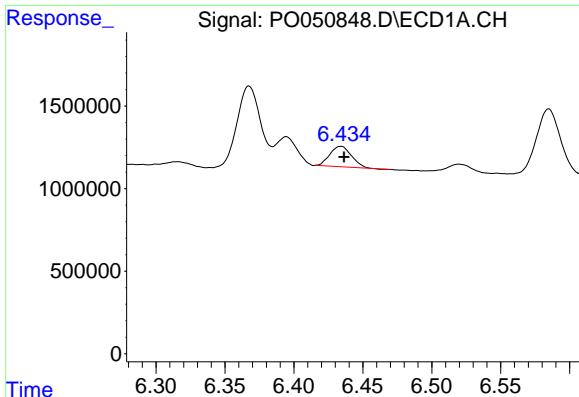
#23 AR-1248-3
 R.T.: 4.625 min
 Delta R.T.: -0.002 min
 Response: 4597848
 Conc: 657.76 ng/ml



#24 AR-1248-4
 R.T.: 6.394 min
 Delta R.T.: -0.003 min
 Response: 1447526
 Conc: 86.83 ng/ml



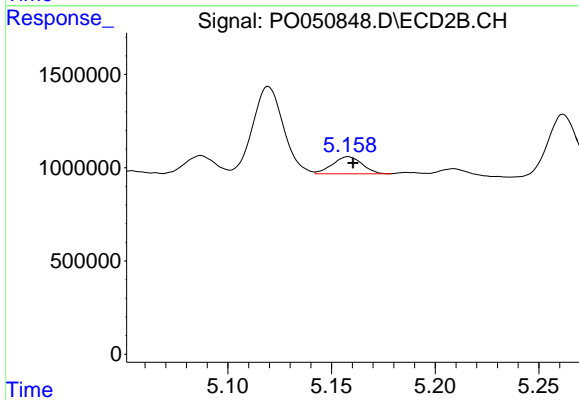
#24 AR-1248-4
 R.T.: 4.786 min
 Delta R.T.: -0.002 min
 Response: 4705788
 Conc: 504.31 ng/ml



#25 AR-1248-5

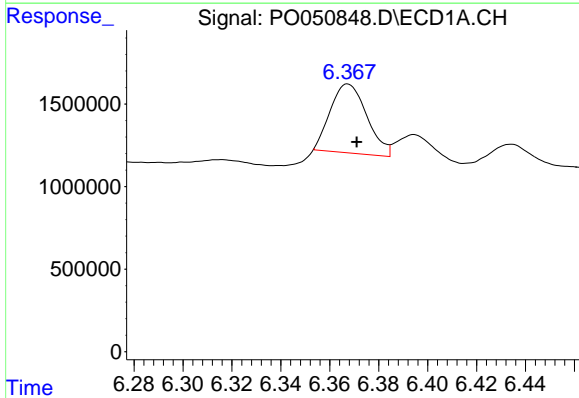
R.T.: 6.434 min
 Delta R.T.: -0.002 min
 Response: 1327518
 Conc: 85.04 ng/ml

Instrument :
 ECD_O
 ClientSampleId :



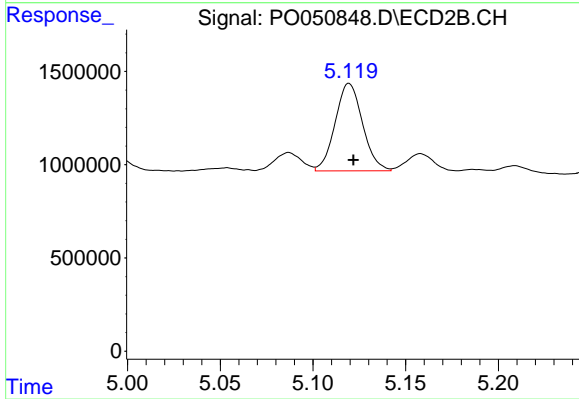
#25 AR-1248-5

R.T.: 5.158 min
 Delta R.T.: -0.002 min
 Response: 914705
 Conc: 95.14 ng/ml



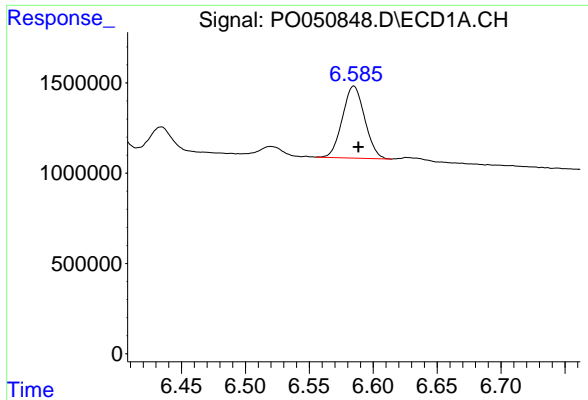
#26 AR-1254-1

R.T.: 6.367 min
 Delta R.T.: -0.004 min
 Response: 4323269
 Conc: 196.88 ng/ml



#26 AR-1254-1

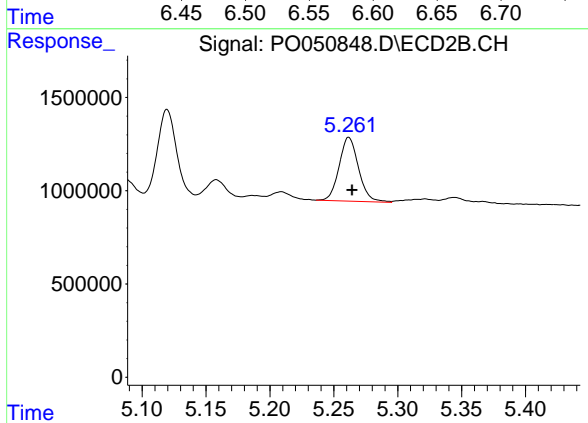
R.T.: 5.119 min
 Delta R.T.: -0.002 min
 Response: 4830142
 Conc: 251.91 ng/ml



#27 AR-1254-2

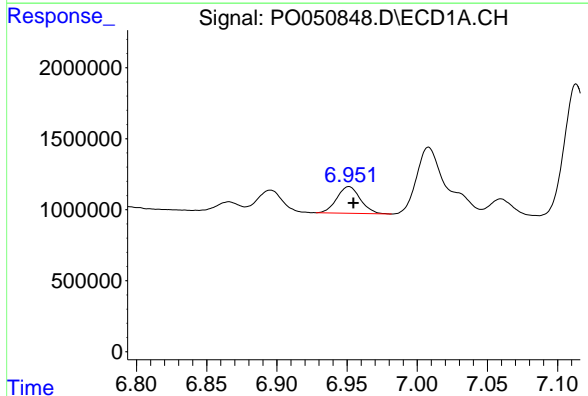
R.T.: 6.585 min
 Delta R.T.: -0.003 min
 Response: 4836579
 Conc: 143.05 ng/ml

Instrument :
 ECD_O
 ClientSampleId :



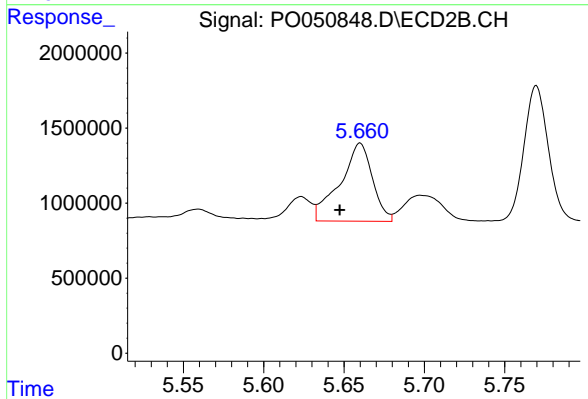
#27 AR-1254-2

R.T.: 5.262 min
 Delta R.T.: -0.003 min
 Response: 3622308
 Conc: 208.67 ng/ml



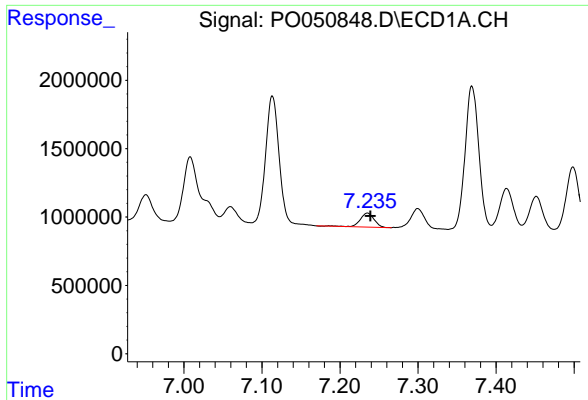
#28 AR-1254-3

R.T.: 6.951 min
 Delta R.T.: -0.003 min
 Response: 2197613
 Conc: 63.11 ng/ml



#28 AR-1254-3

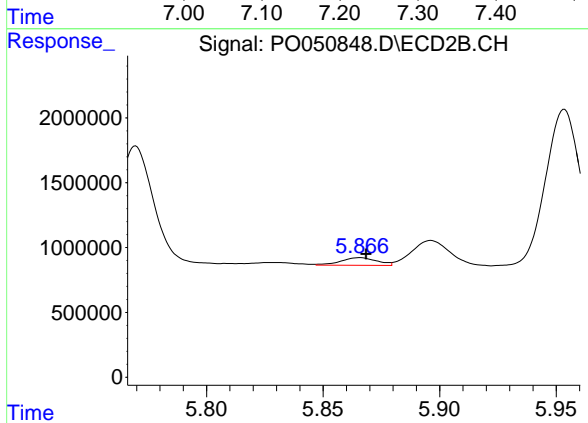
R.T.: 5.660 min
 Delta R.T.: 0.013 min
 Response: 7313698
 Conc: 258.40 ng/ml



#29 AR-1254-4

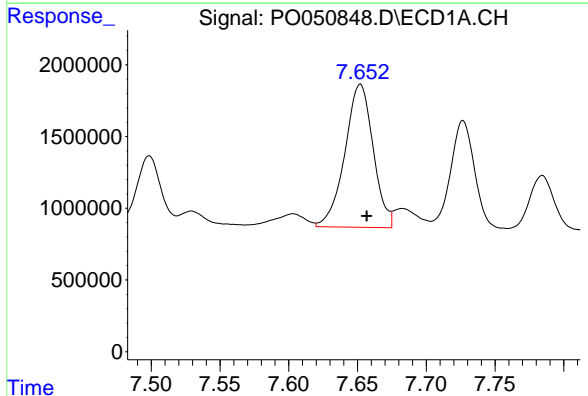
R.T.: 7.235 min
 Delta R.T.: -0.004 min
 Response: 1289446
 Conc: 55.75 ng/ml

Instrument :
 ECD_O
 ClientSampled :



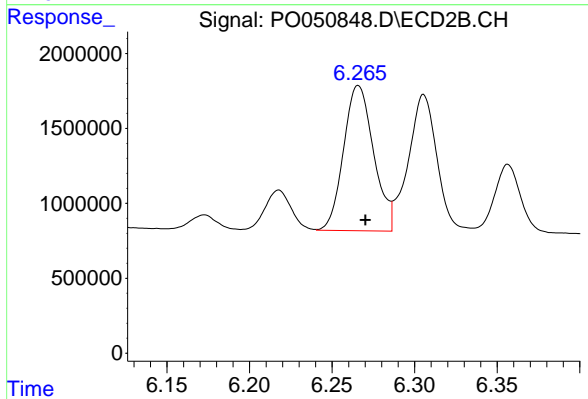
#29 AR-1254-4

R.T.: 5.866 min
 Delta R.T.: -0.003 min
 Response: 627012
 Conc: 35.47 ng/ml



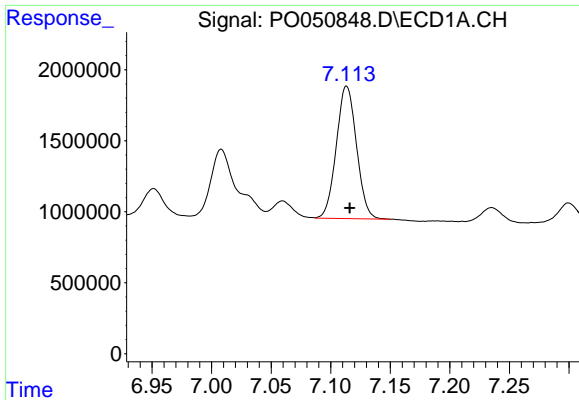
#30 AR-1254-5

R.T.: 7.652 min
 Delta R.T.: -0.005 min
 Response: 14292610
 Conc: 582.13 ng/ml



#30 AR-1254-5

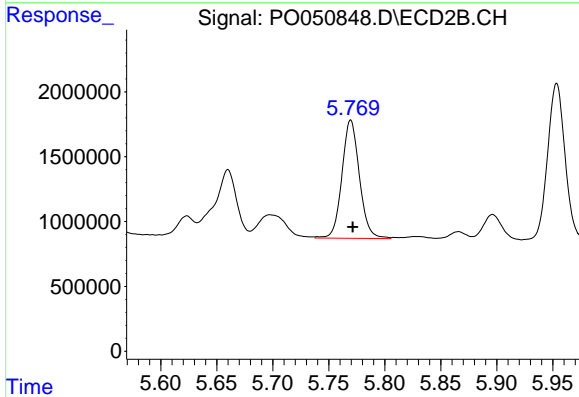
R.T.: 6.266 min
 Delta R.T.: -0.004 min
 Response: 12286030
 Conc: 459.53 ng/ml



#31 AR-1260-1

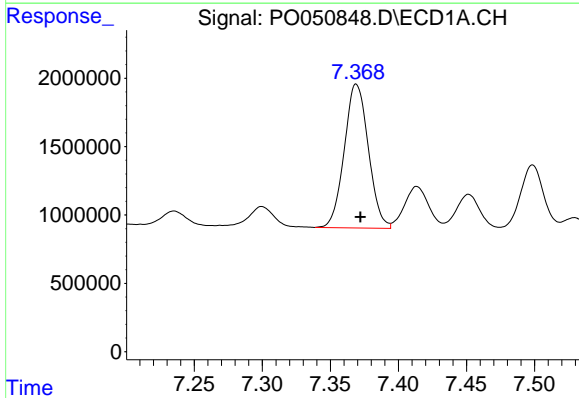
R.T.: 7.113 min
 Delta R.T.: -0.003 min
 Response: 10993077
 Conc: 427.32 ng/ml

Instrument :
 ECD_O
 ClientSampled :



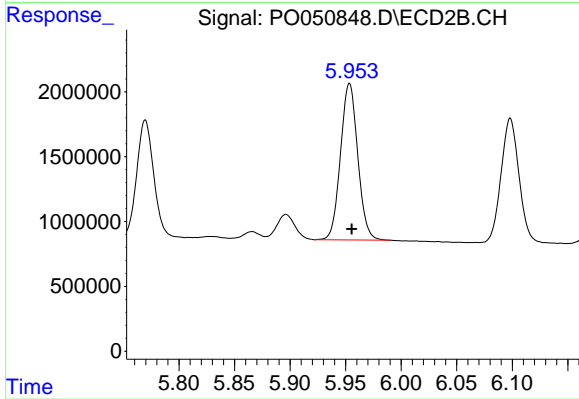
#31 AR-1260-1

R.T.: 5.770 min
 Delta R.T.: -0.002 min
 Response: 9902225
 Conc: 478.93 ng/ml



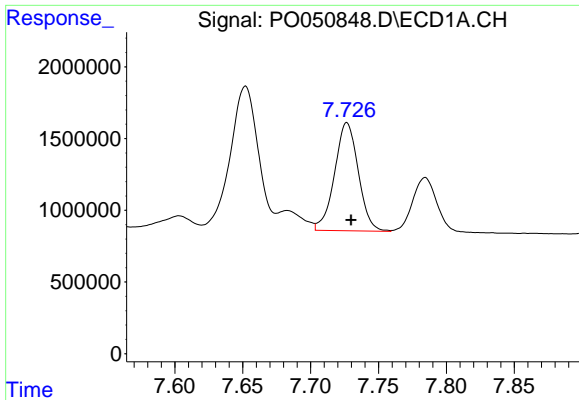
#32 AR-1260-2

R.T.: 7.369 min
 Delta R.T.: -0.003 min
 Response: 12953051
 Conc: 437.86 ng/ml



#32 AR-1260-2

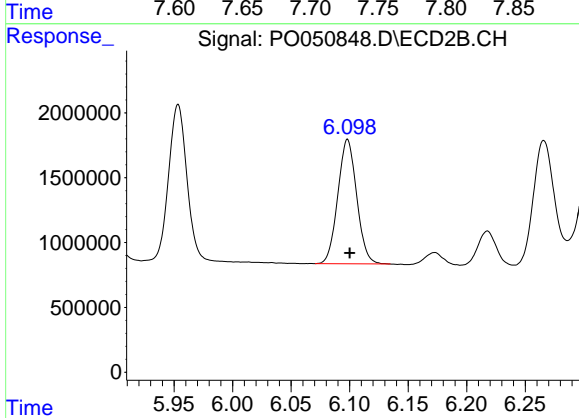
R.T.: 5.954 min
 Delta R.T.: -0.002 min
 Response: 13040036
 Conc: 454.11 ng/ml



#33 AR-1260-3

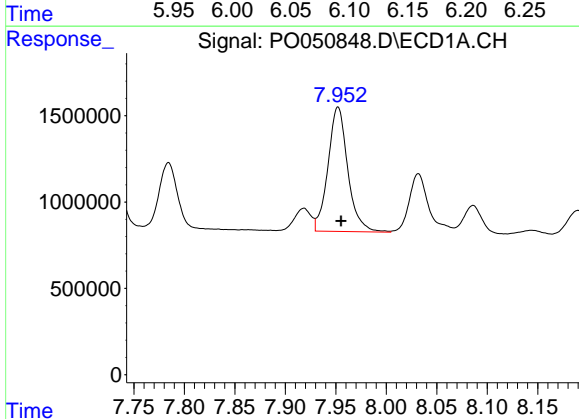
R.T.: 7.727 min
Delta R.T.: -0.003 min
Response: 9176635
Conc: 433.00 ng/ml

Instrument :
ECD_O
ClientSampleId :



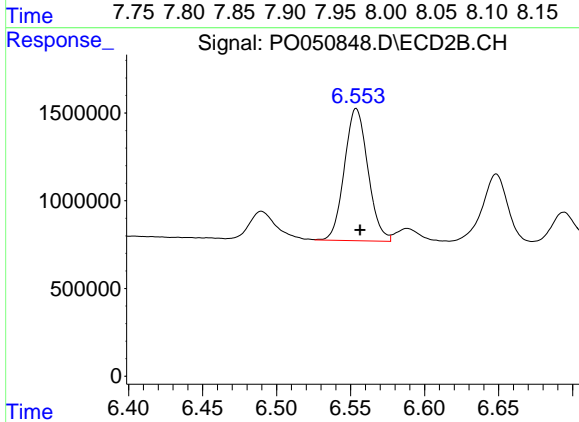
#33 AR-1260-3

R.T.: 6.098 min
Delta R.T.: -0.002 min
Response: 10765593
Conc: 436.55 ng/ml



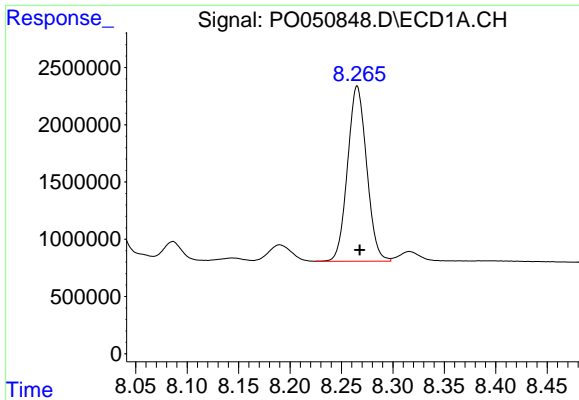
#34 AR-1260-4

R.T.: 7.952 min
Delta R.T.: -0.003 min
Response: 9846065
Conc: 430.28 ng/ml



#34 AR-1260-4

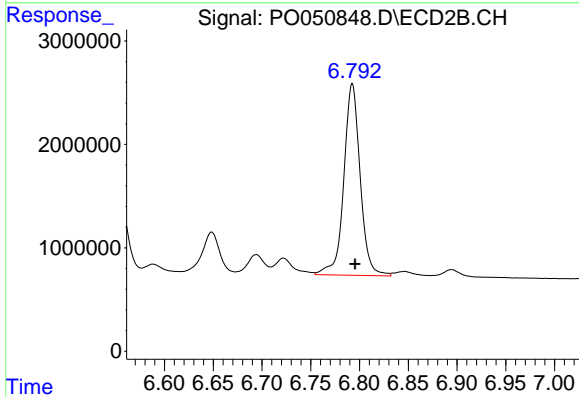
R.T.: 6.554 min
Delta R.T.: -0.003 min
Response: 8343655
Conc: 404.53 ng/ml



#35 AR-1260-5

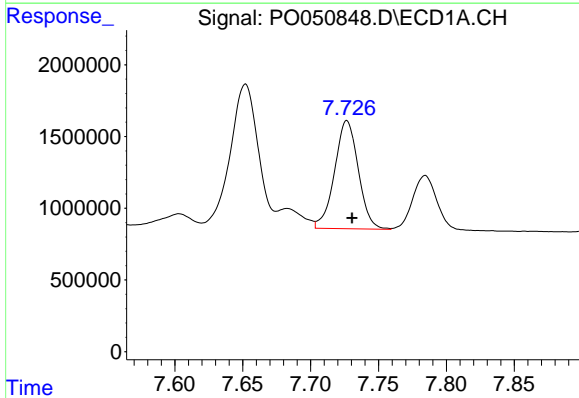
R.T.: 8.265 min
 Delta R.T.: -0.002 min
 Response: 19754978
 Conc: 448.52 ng/ml

Instrument :
 ECD_O
 ClientSampled :



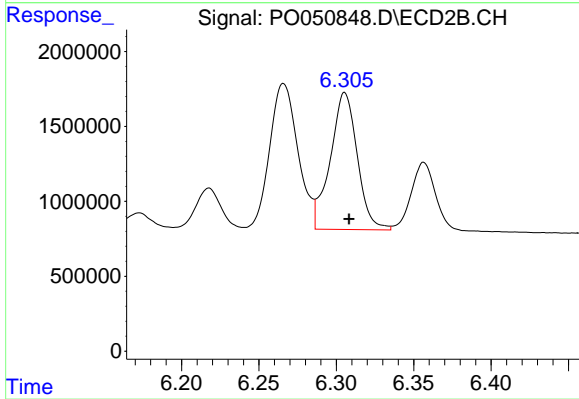
#35 AR-1260-5

R.T.: 6.793 min
 Delta R.T.: -0.003 min
 Response: 21622356
 Conc: 416.11 ng/ml



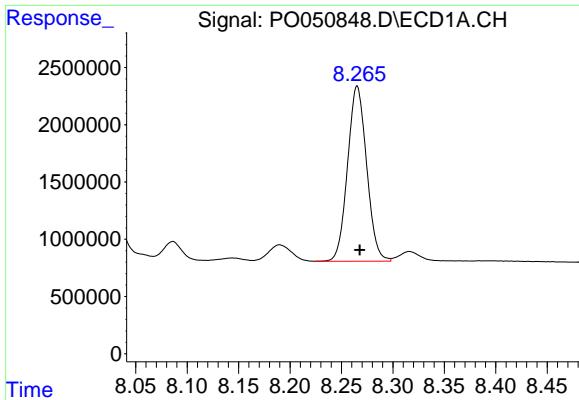
#36 AR-1262-1

R.T.: 7.727 min
 Delta R.T.: -0.004 min
 Response: 9176635
 Conc: 371.97 ng/ml



#36 AR-1262-1

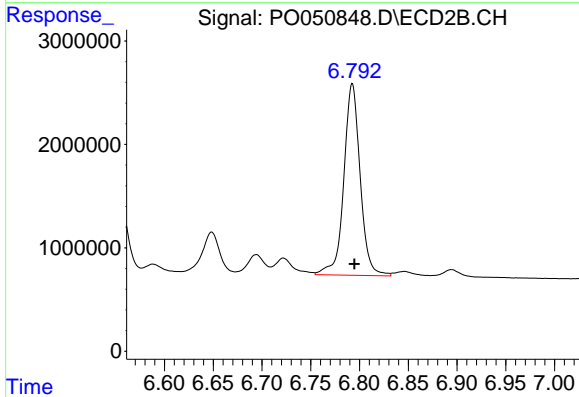
R.T.: 6.305 min
 Delta R.T.: -0.003 min
 Response: 11101974
 Conc: 394.53 ng/ml



#37 AR-1262-2

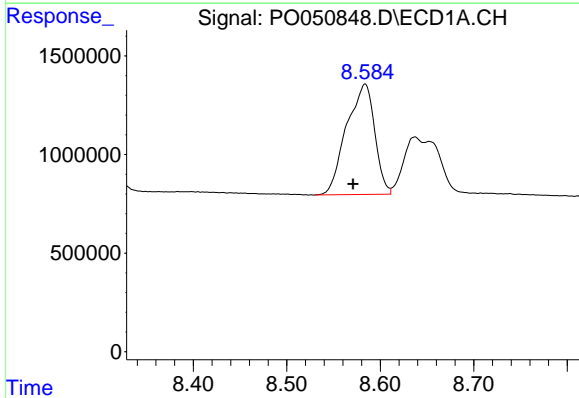
R.T.: 8.265 min
 Delta R.T.: -0.002 min
 Response: 19754978
 Conc: 504.75 ng/ml

Instrument :
 ECD_O
 ClientSampled :



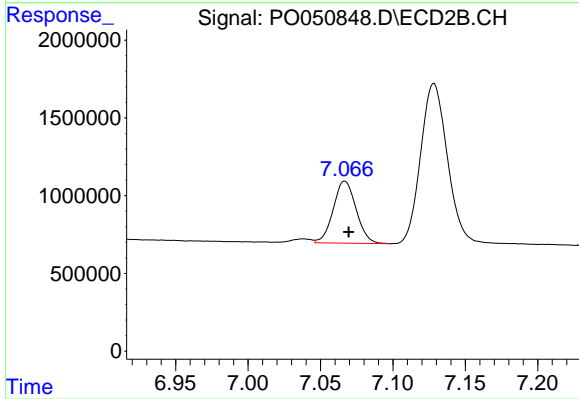
#37 AR-1262-2

R.T.: 6.793 min
 Delta R.T.: -0.002 min
 Response: 21622356
 Conc: 481.33 ng/ml



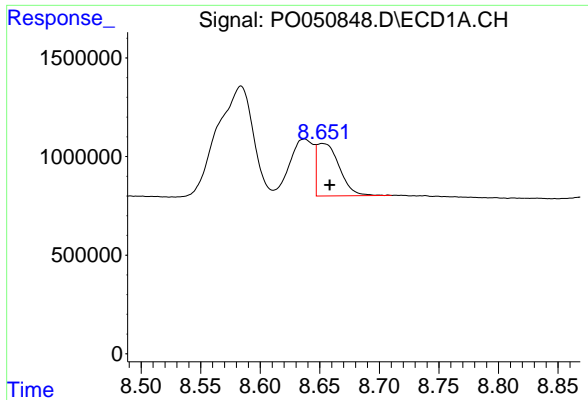
#38 AR-1262-3

R.T.: 8.584 min
 Delta R.T.: 0.013 min
 Response: 11718570
 Conc: 463.85 ng/ml



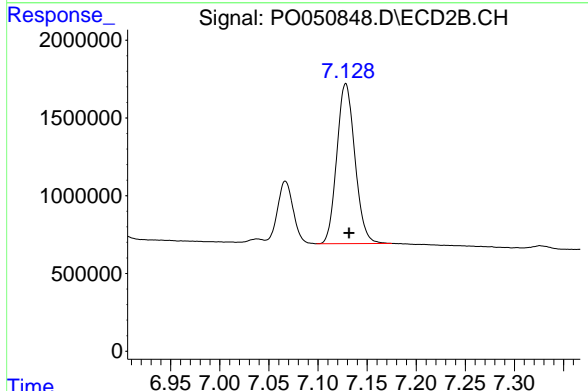
#38 AR-1262-3

R.T.: 7.067 min
 Delta R.T.: -0.003 min
 Response: 4394067
 Conc: 244.74 ng/ml

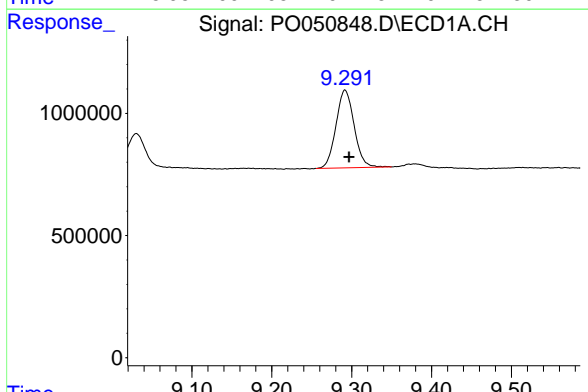


#39 AR-1262-4
 R.T.: 8.652 min
 Delta R.T.: -0.006 min
 Response: 3477215
 Conc: 177.17 ng/ml

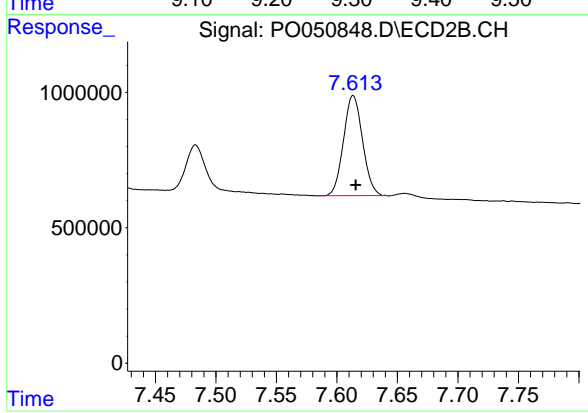
Instrument :
 ECD_O
 ClientSampled :



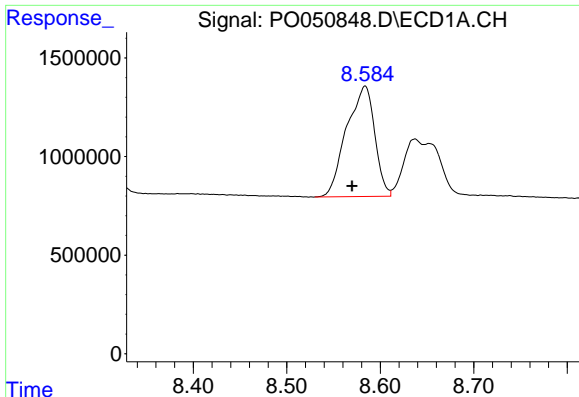
#39 AR-1262-4
 R.T.: 7.128 min
 Delta R.T.: -0.004 min
 Response: 13185851
 Conc: 448.20 ng/ml



#40 AR-1262-5
 R.T.: 9.292 min
 Delta R.T.: -0.005 min
 Response: 5032342
 Conc: 417.52 ng/ml



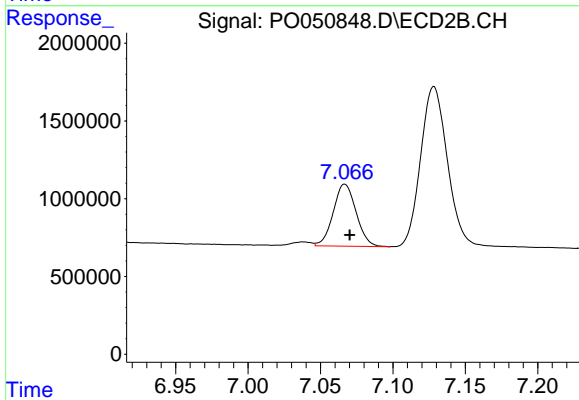
#40 AR-1262-5
 R.T.: 7.613 min
 Delta R.T.: -0.002 min
 Response: 4033480
 Conc: 347.55 ng/ml



#41 AR-1268-1

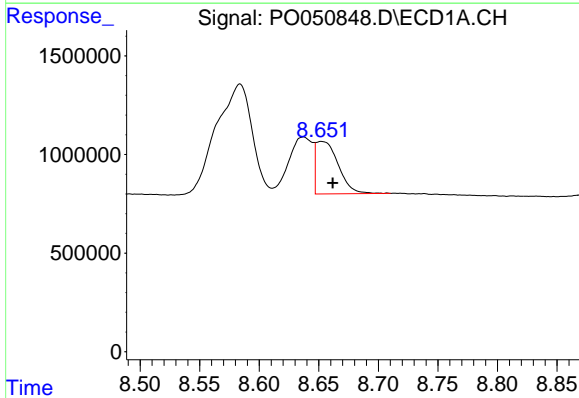
R.T.: 8.584 min
Delta R.T.: 0.014 min
Response: 11718570
Conc: 232.27 ng/ml

Instrument :
ECD_O
ClientSampled :



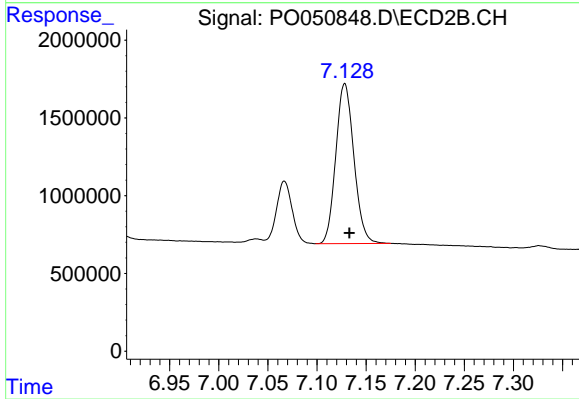
#41 AR-1268-1

R.T.: 7.067 min
Delta R.T.: -0.003 min
Response: 4394067
Conc: 79.78 ng/ml



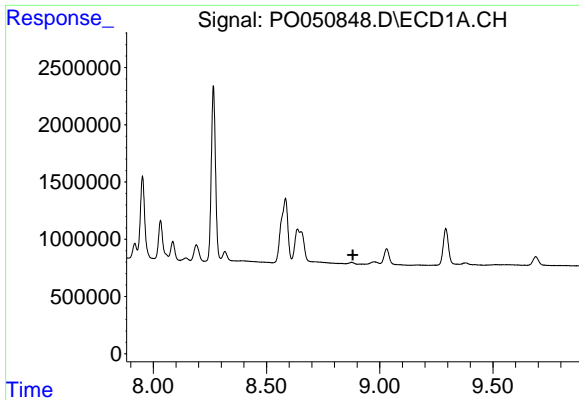
#42 AR-1268-2

R.T.: 8.652 min
Delta R.T.: -0.009 min
Response: 3477215
Conc: 76.45 ng/ml



#42 AR-1268-2

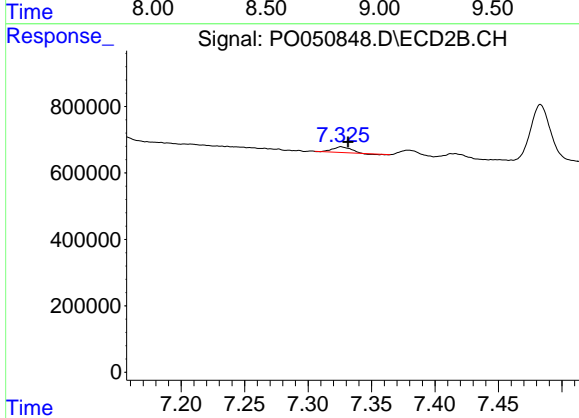
R.T.: 7.128 min
Delta R.T.: -0.005 min
Response: 13185851
Conc: 276.63 ng/ml



#43 AR-1268-3

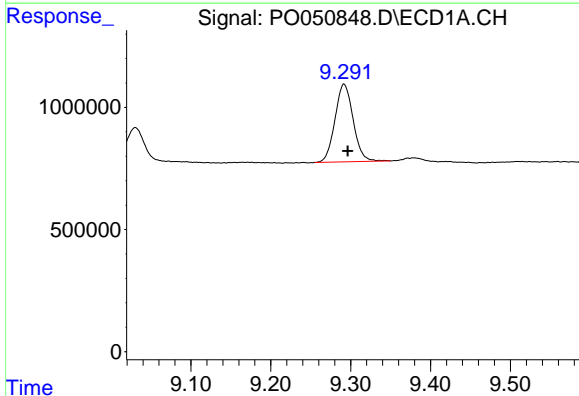
R.T.: 0.000 min
 Exp R.T.: 8.882 min
 Response: 0
 Conc: N.D.

Instrument :
 ECD_O
 ClientSampled :



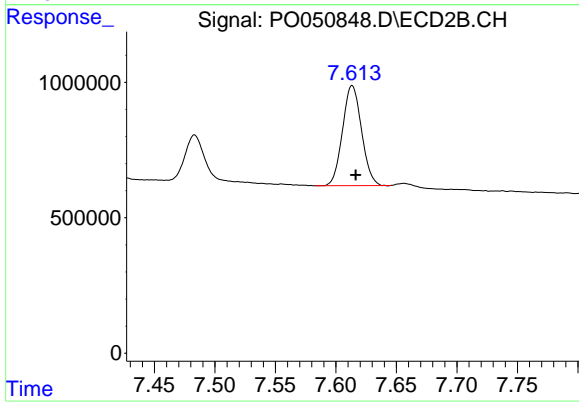
#43 AR-1268-3

R.T.: 7.326 min
 Delta R.T.: -0.005 min
 Response: 151108
 Conc: 3.51 ng/ml



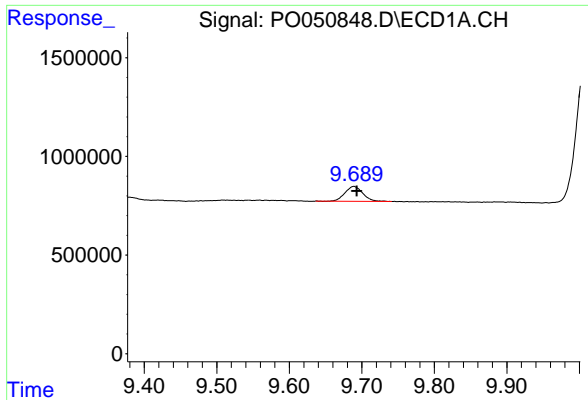
#44 AR-1268-4

R.T.: 9.292 min
 Delta R.T.: -0.005 min
 Response: 5032342
 Conc: 355.26 ng/ml



#44 AR-1268-4

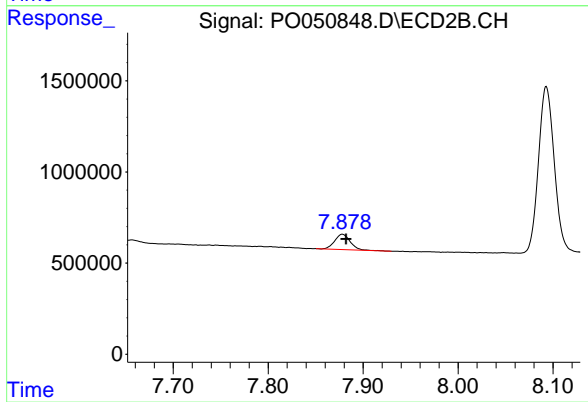
R.T.: 7.613 min
 Delta R.T.: -0.003 min
 Response: 4033480
 Conc: 288.72 ng/ml



#45 AR-1268-5

R.T.: 9.689 min
Delta R.T.: -0.004 min
Response: 1298940
Conc: 10.78 ng/ml

Instrument :
ECD_O
ClientSampleId :



#45 AR-1268-5

R.T.: 7.878 min
Delta R.T.: -0.004 min
Response: 941454
Conc: 9.39 ng/ml