

Data Path : Z:\pestpcbsrv\HPCHEM1\ECD_0\Data\PO103118\
 Data File : PO050851.D
 Signal(s) : Signal #1: ECD1A.CH Signal #2: ECD2B.CH
 Acq On : 01 Nov 2018 1:36
 Operator : SM/SJ
 Sample : J5728-01
 Misc :
 ALS Vial : 32 Sample Multiplier: 1

Instrument :
 ECD_0
 ClientSampled :

Integration File signal 1: autoint1.e
 Integration File signal 2: autoint2.e
 Quant Time: Nov 01 03:23:07 2018
 Quant Method : Z:\pestpcbsrv\HPCHEM1\ECD_0\methods\PO102918.M
 Quant Title : GC EXTRACTABLES
 QLast Update : Tue Oct 30 07:48:38 2018
 Response via : Initial Calibration
 Integrator: ChemStation 6890 Scale Mode: Small noise peaks clipped

Volume Inj. : 2 µl
 Signal #1 Phase : ZB-MR1 Signal #2 Phase: ZB-MR2
 Signal #1 Info : 30Mx0.32mmx 0.50µ Signal #2 Info : 30M x 0.32mm x 0.25µm

Compound	RT#1	RT#2	Resp#1	Resp#2	ng/ml	ng/ml

System Monitoring Compounds						
1) SA Tetrachlo...	4.353	3.347	7370656	3080981	14.746	14.175
2) SA Decachlor...	10.011	8.092	2710644	1910866	8.721	7.471
Target Compounds						
3) L1 AR-1016-1	0.000	4.344	0	21921	N.D.	2.385 #
4) L1 AR-1016-2	0.000	4.344	0	21921	N.D.	1.415 #
5) L1 AR-1016-3	0.000	4.541	0	15683	N.D.	1.958 #
6) L1 AR-1016-4	0.000	4.630	0	17196	N.D.	2.826 #
7) L1 AR-1016-5	0.000	4.808	0	111493	N.D.	12.920 #
9) L2 AR-1221-2	0.000	3.624	0	13657	N.D.	10.731 #
10) L2 AR-1221-3	0.000	3.750	0	44303	N.D.	10.359 #
11) L3 AR-1232-1	0.000	3.750	0	44303	N.D.	11.082 #
12) L3 AR-1232-2	0.000	4.344	0	21921	N.D.	4.582 #
13) L3 AR-1232-3	0.000	4.541	0	15683	N.D.	6.014 #
14) L3 AR-1232-4	0.000	4.630	0	17196	N.D.	7.714 #
15) L3 AR-1232-5	0.000	4.808	0	111493	N.D.	41.919 #
16) L4 AR-1242-1	0.000	4.344	0	21921	N.D.	3.735 #
17) L4 AR-1242-2	0.000	4.344	0	21921	N.D.	2.194 #
18) L4 AR-1242-3	0.000	4.541	0	15683	N.D.	3.106 #
19) L4 AR-1242-4	0.000	4.630	0	17196	N.D.	3.600 #
21) L5 AR-1248-1	0.000	4.344	0	21921	N.D.	4.751 #
22) L5 AR-1248-2	0.000	4.630	0	17196	N.D.	2.469 #
23) L5 AR-1248-3	0.000	4.630	0	17196	N.D.	2.460 #
24) L5 AR-1248-4	0.000	4.808	0	111493	N.D.	11.948 #
31) L7 AR-1260-1	0.000	5.753	0	23057	N.D.	1.115 #

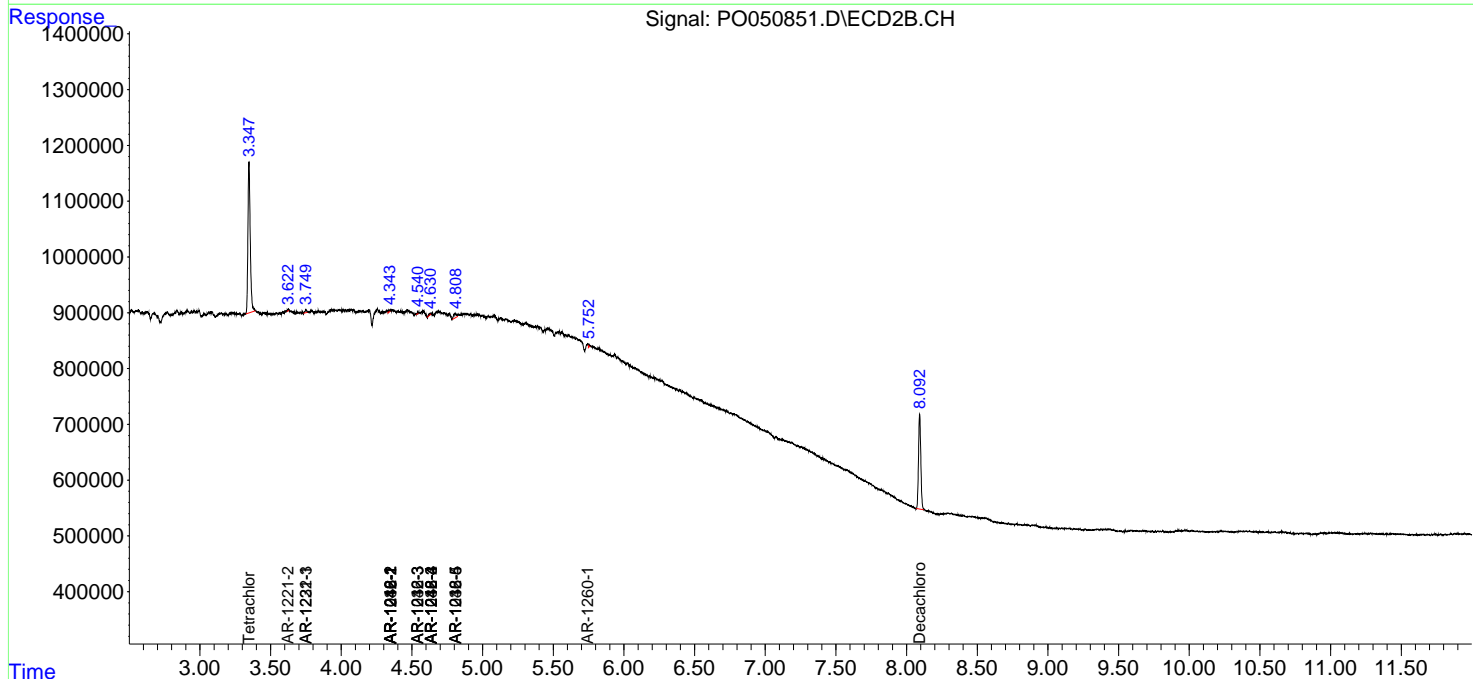
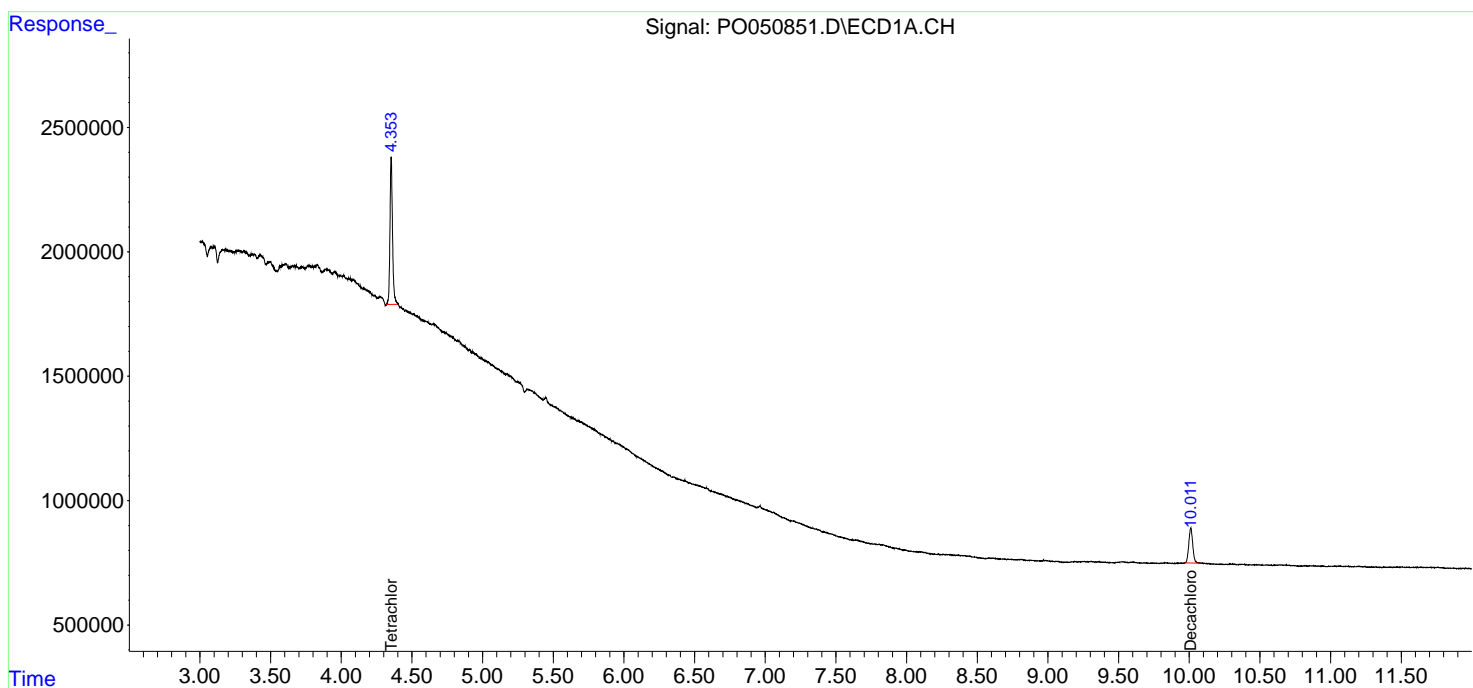
(f)=RT Delta > 1/2 Window (#)=Amounts differ by > 25% (m)=manual int.

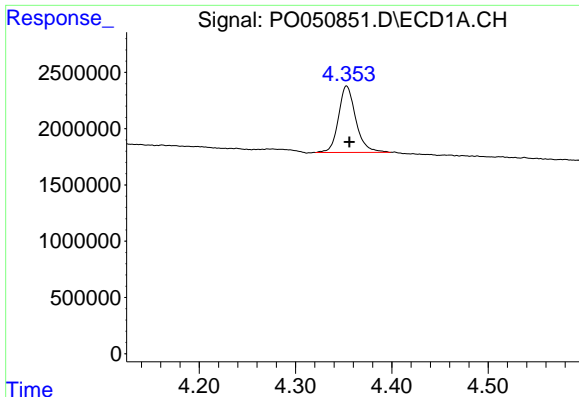
Data Path : Z:\pestpcbsrv\HPCHEM1\ECD_O\Data\PO103118\
 Data File : PO050851.D
 Signal(s) : Signal #1: ECD1A.CH Signal #2: ECD2B.CH
 Acq On : 01 Nov 2018 1:36
 Operator : SM/SJ
 Sample : J5728-01
 Misc :
 ALS Vial : 32 Sample Multiplier: 1

Instrument :
 ECD_O
 ClientSampled :

Integration File signal 1: autoint1.e
 Integration File signal 2: autoint2.e
 Quant Time: Nov 01 03:23:07 2018
 Quant Method : Z:\pestpcbsrv\HPCHEM1\ECD_O\methods\PO102918.M
 Quant Title : GC EXTRACTABLES
 QLast Update : Tue Oct 30 07:48:38 2018
 Response via : Initial Calibration
 Integrator: ChemStation 6890 Scale Mode: Small noise peaks clipped

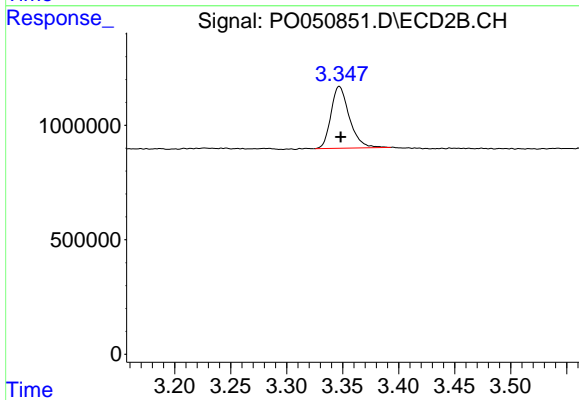
Volume Inj. : 2 µl
 Signal #1 Phase : ZB-MR1 Signal #2 Phase: ZB-MR2
 Signal #1 Info : 30Mx0.32mmx 0.50µ Signal #2 Info : 30M x 0.32mm x 0.25µm



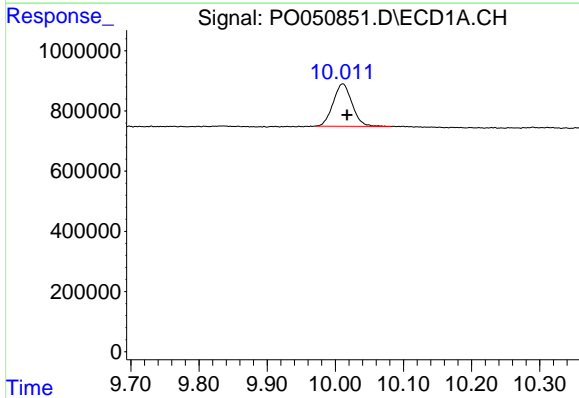


#1 Tetrachloro-m-xylene
 R.T.: 4.353 min
 Delta R.T.: -0.003 min
 Response: 7370656
 Conc: 14.75 ng/ml

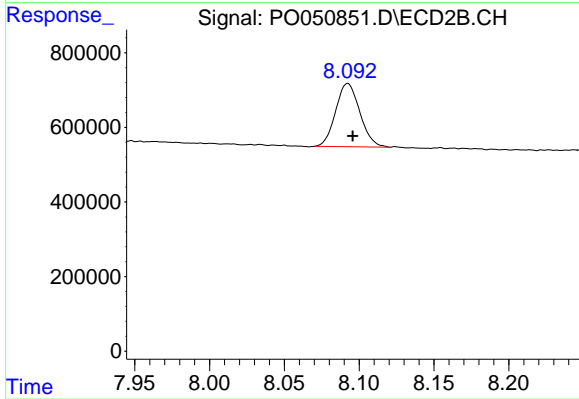
Instrument :
 ECD_O
 ClientSampleId :



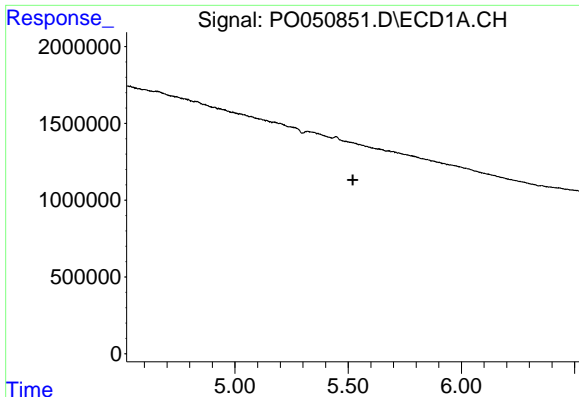
#1 Tetrachloro-m-xylene
 R.T.: 3.347 min
 Delta R.T.: -0.001 min
 Response: 3080981
 Conc: 14.17 ng/ml



#2 Decachlorobiphenyl
 R.T.: 10.011 min
 Delta R.T.: -0.006 min
 Response: 2710644
 Conc: 8.72 ng/ml



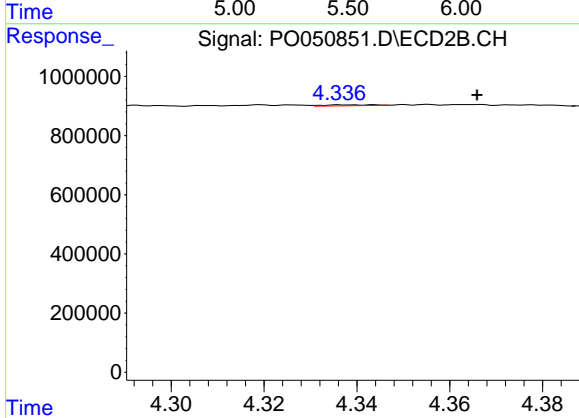
#2 Decachlorobiphenyl
 R.T.: 8.092 min
 Delta R.T.: -0.003 min
 Response: 1910866
 Conc: 7.47 ng/ml



#3 AR-1016-1

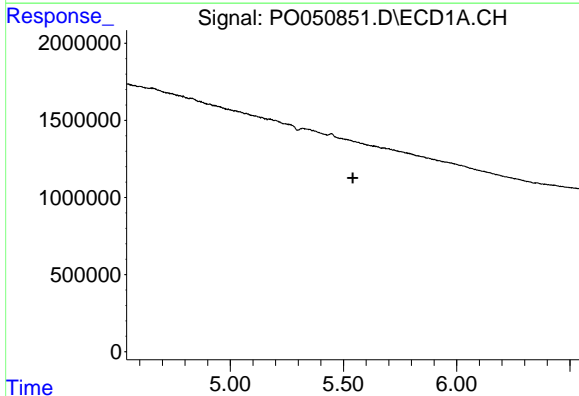
R.T.: 0.000 min
 Exp R.T. : 5.521 min
 Response: 0
 Conc: N.D.

Instrument :
 ECD_O
 ClientSampleId :



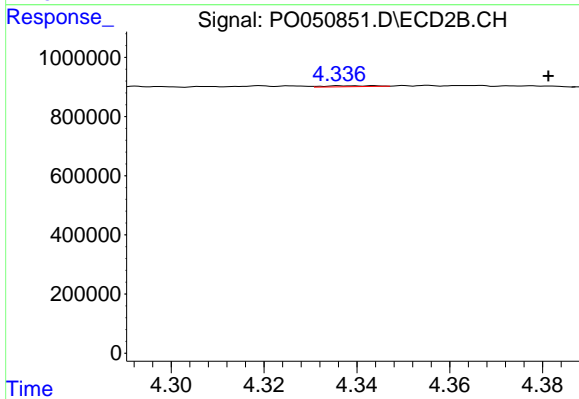
#3 AR-1016-1

R.T.: 4.344 min
 Delta R.T.: -0.022 min
 Response: 21921
 Conc: 2.39 ng/ml



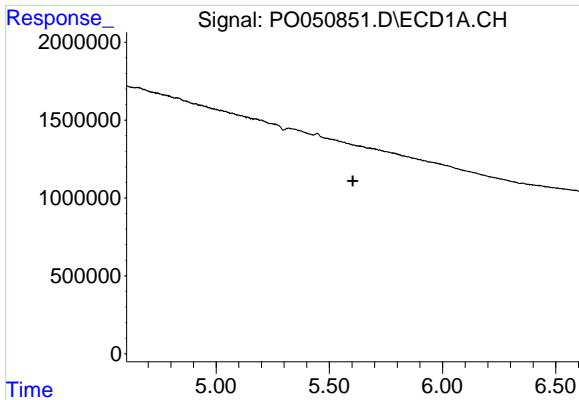
#4 AR-1016-2

R.T.: 0.000 min
 Exp R.T. : 5.542 min
 Response: 0
 Conc: N.D.



#4 AR-1016-2

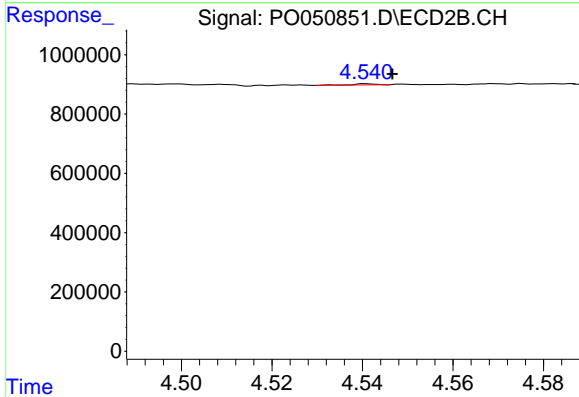
R.T.: 4.344 min
 Delta R.T.: -0.038 min
 Response: 21921
 Conc: 1.41 ng/ml



#5 AR-1016-3

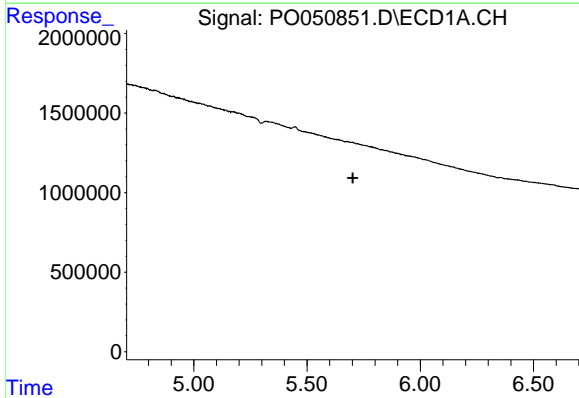
R.T.: 0.000 min
 Exp R.T. : 5.604 min
 Response: 0
 Conc: N.D.

Instrument :
 ECD_O
 ClientSampleId :



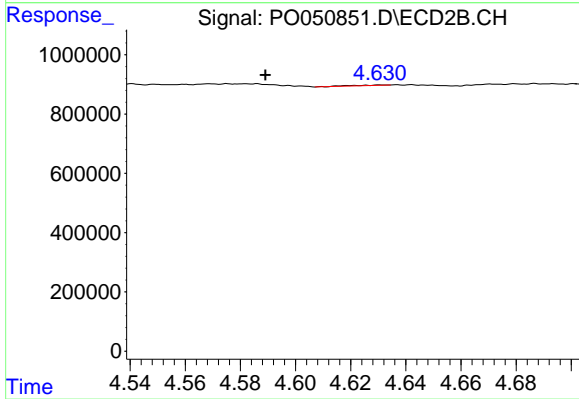
#5 AR-1016-3

R.T.: 4.541 min
 Delta R.T.: -0.006 min
 Response: 15683
 Conc: 1.96 ng/ml



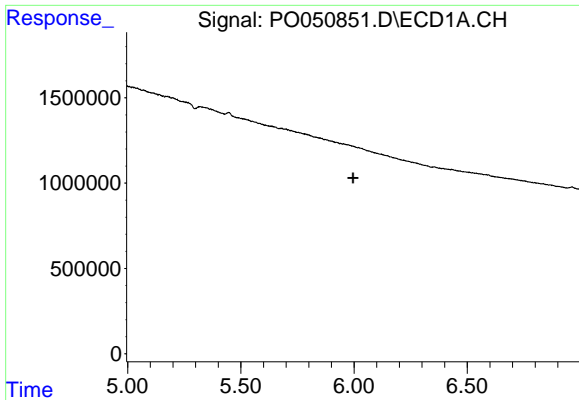
#6 AR-1016-4

R.T.: 0.000 min
 Exp R.T. : 5.703 min
 Response: 0
 Conc: N.D.



#6 AR-1016-4

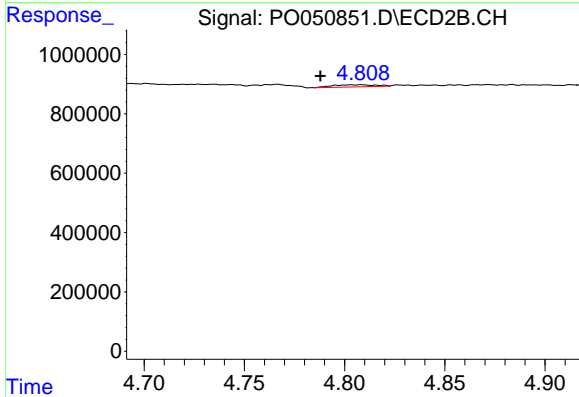
R.T.: 4.630 min
 Delta R.T.: 0.041 min
 Response: 17196
 Conc: 2.83 ng/ml



#7 AR-1016-5

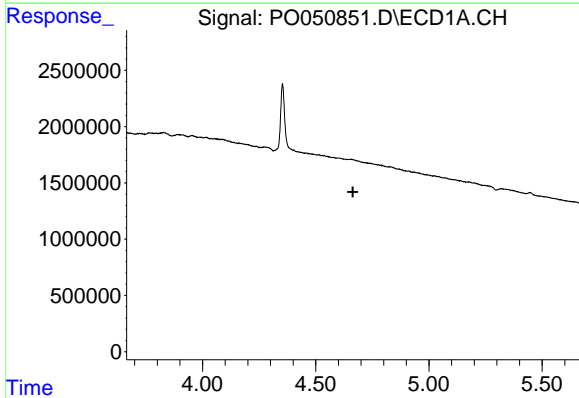
R.T.: 0.000 min
 Exp R.T.: 5.995 min
 Response: 0
 Conc: N.D.

Instrument :
 ECD_O
 ClientSampled :



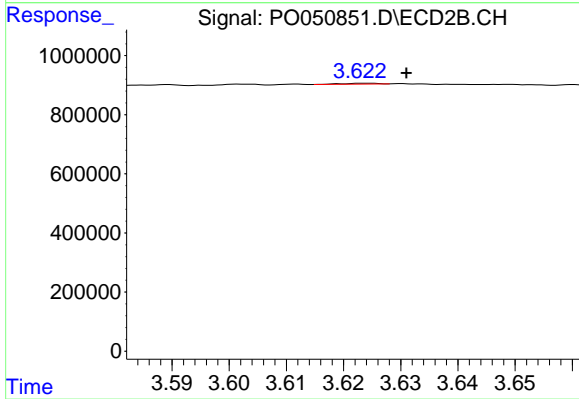
#7 AR-1016-5

R.T.: 4.808 min
 Delta R.T.: 0.020 min
 Response: 111493
 Conc: 12.92 ng/ml



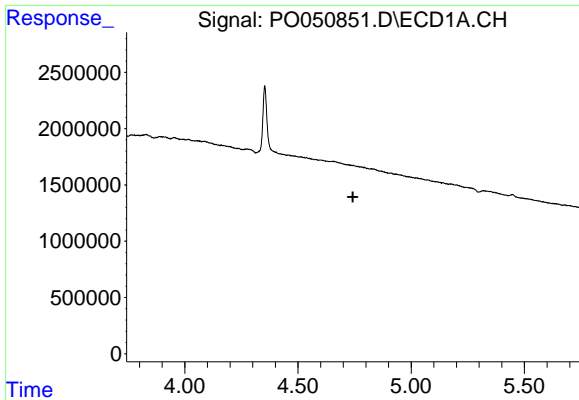
#9 AR-1221-2

R.T.: 0.000 min
 Exp R.T.: 4.664 min
 Response: 0
 Conc: N.D.



#9 AR-1221-2

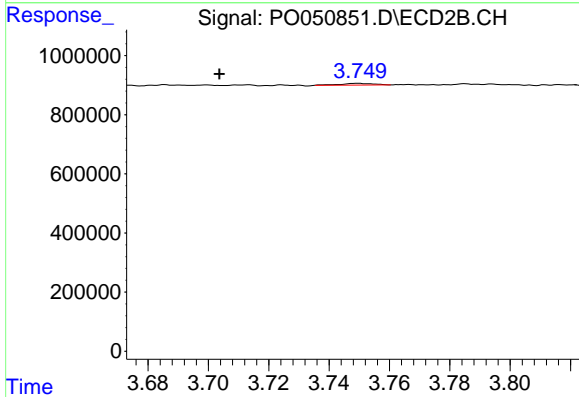
R.T.: 3.624 min
 Delta R.T.: -0.007 min
 Response: 13657
 Conc: 10.73 ng/ml



#10 AR-1221-3

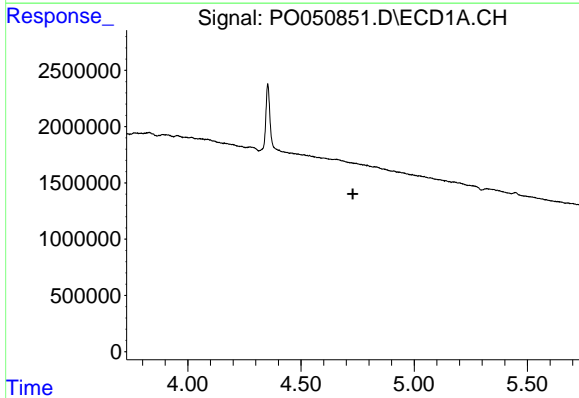
R.T.: 0.000 min
 Exp R.T. : 4.742 min
 Response: 0
 Conc: N.D.

Instrument :
 ECD_O
 ClientSampleId :



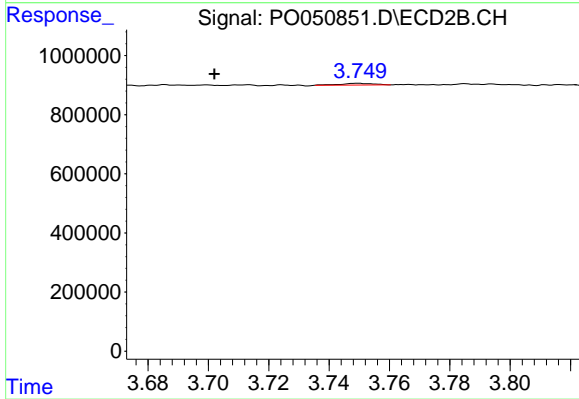
#10 AR-1221-3

R.T.: 3.750 min
 Delta R.T.: 0.046 min
 Response: 44303
 Conc: 10.36 ng/ml



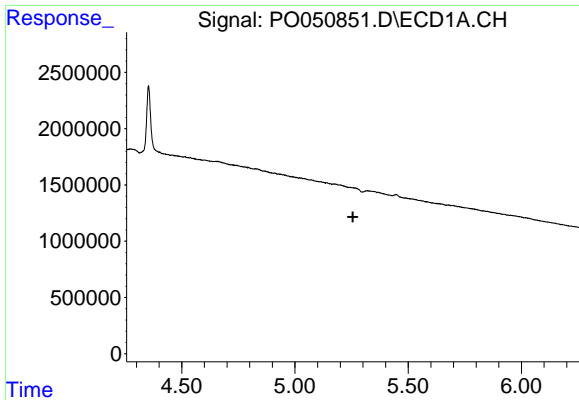
#11 AR-1232-1

R.T.: 0.000 min
 Exp R.T. : 4.729 min
 Response: 0
 Conc: N.D.



#11 AR-1232-1

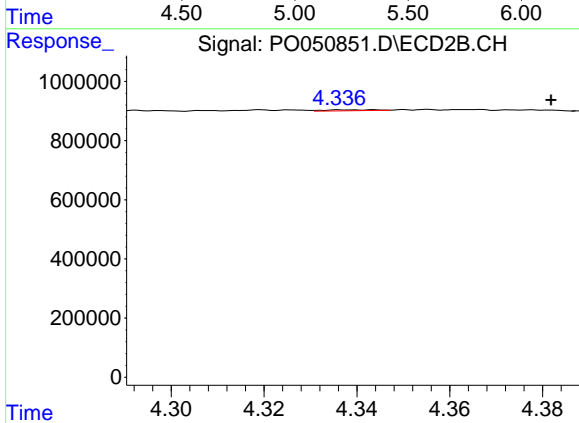
R.T.: 3.750 min
 Delta R.T.: 0.048 min
 Response: 44303
 Conc: 11.08 ng/ml



#12 AR-1232-2

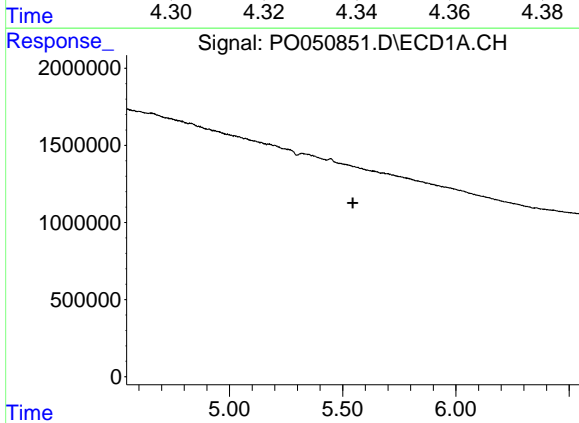
R.T.: 0.000 min
 Exp R.T.: 5.256 min
 Response: 0
 Conc: N.D.

Instrument :
 ECD_O
 ClientSampleId :



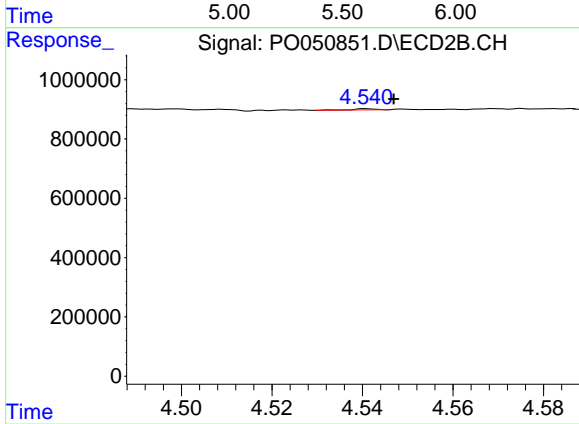
#12 AR-1232-2

R.T.: 4.344 min
 Delta R.T.: -0.038 min
 Response: 21921
 Conc: 4.58 ng/ml



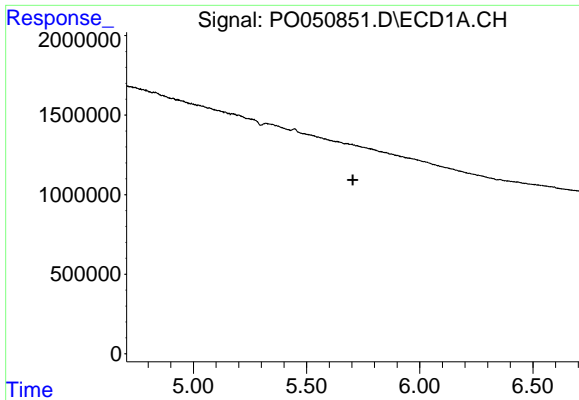
#13 AR-1232-3

R.T.: 0.000 min
 Exp R.T.: 5.545 min
 Response: 0
 Conc: N.D.



#13 AR-1232-3

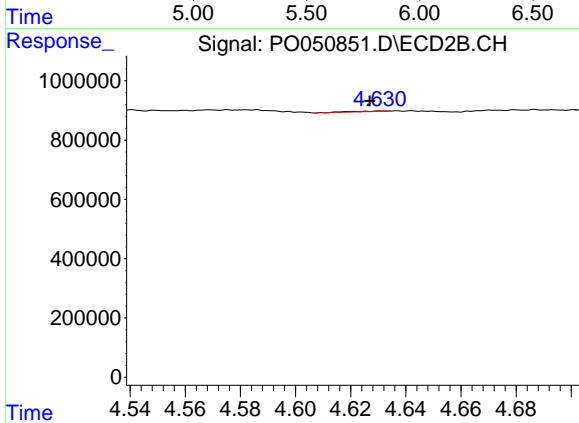
R.T.: 4.541 min
 Delta R.T.: -0.006 min
 Response: 15683
 Conc: 6.01 ng/ml



#14 AR-1232-4

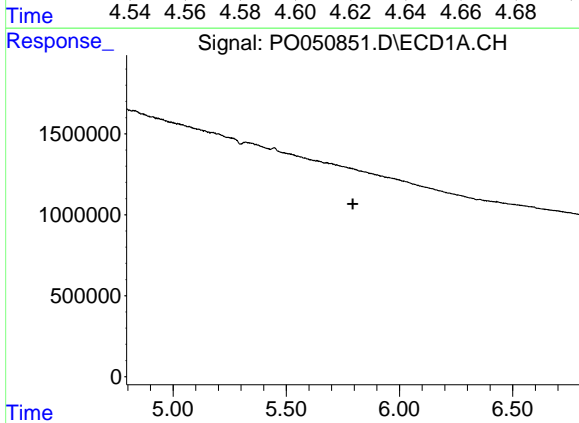
R.T.: 0.000 min
 Exp R.T. : 5.705 min
 Response: 0
 Conc: N.D.

Instrument :
 ECD_O
 ClientSampleId :



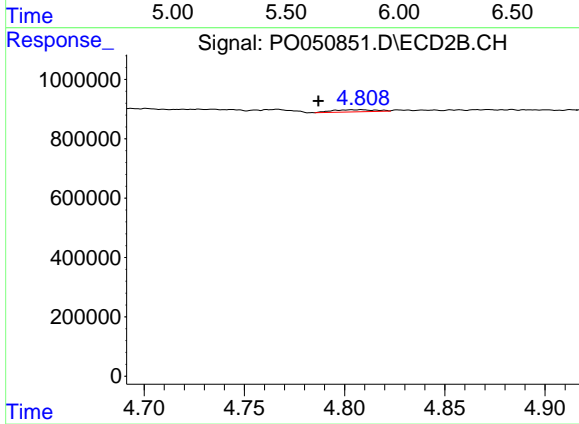
#14 AR-1232-4

R.T.: 4.630 min
 Delta R.T.: 0.004 min
 Response: 17196
 Conc: 7.71 ng/ml



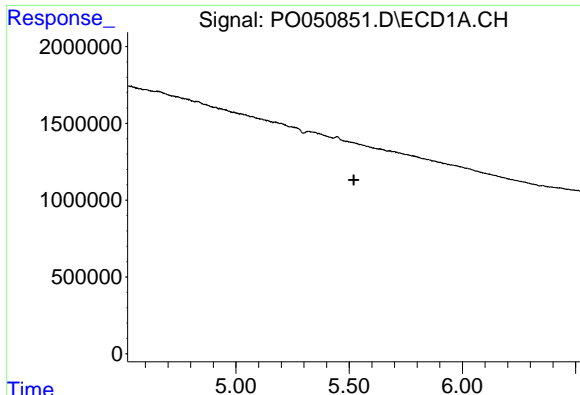
#15 AR-1232-5

R.T.: 0.000 min
 Exp R.T. : 5.794 min
 Response: 0
 Conc: N.D.



#15 AR-1232-5

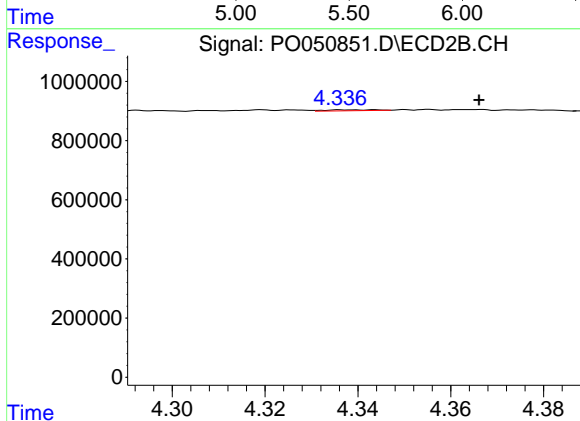
R.T.: 4.808 min
 Delta R.T.: 0.021 min
 Response: 111493
 Conc: 41.92 ng/ml



#16 AR-1242-1

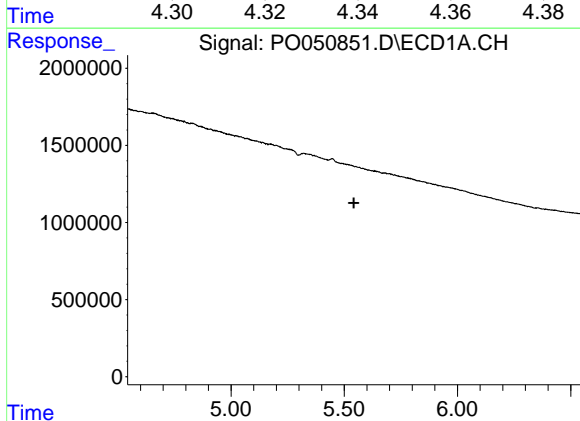
R.T.: 0.000 min
 Exp R.T. : 5.521 min
 Response: 0
 Conc: N.D.

Instrument :
 ECD_O
 ClientSampled :



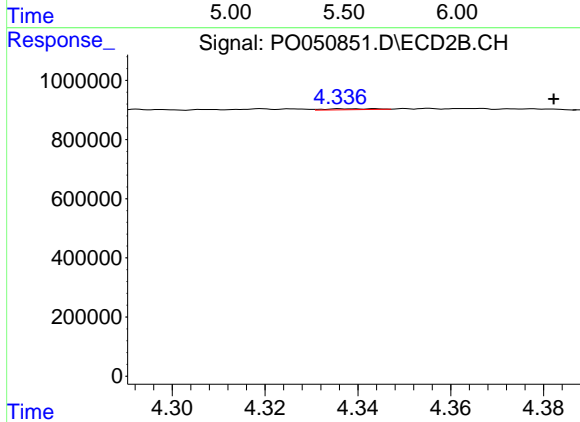
#16 AR-1242-1

R.T.: 4.344 min
 Delta R.T.: -0.022 min
 Response: 21921
 Conc: 3.74 ng/ml



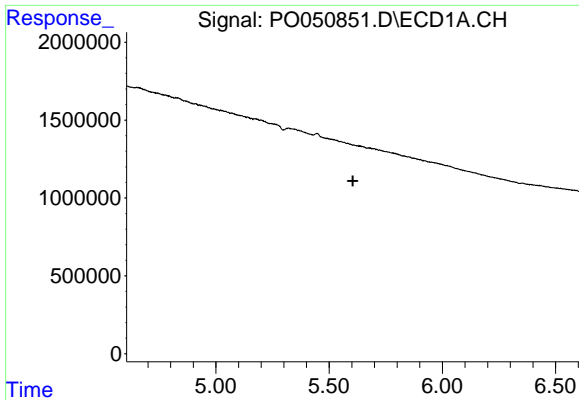
#17 AR-1242-2

R.T.: 0.000 min
 Exp R.T. : 5.543 min
 Response: 0
 Conc: N.D.



#17 AR-1242-2

R.T.: 4.344 min
 Delta R.T.: -0.038 min
 Response: 21921
 Conc: 2.19 ng/ml

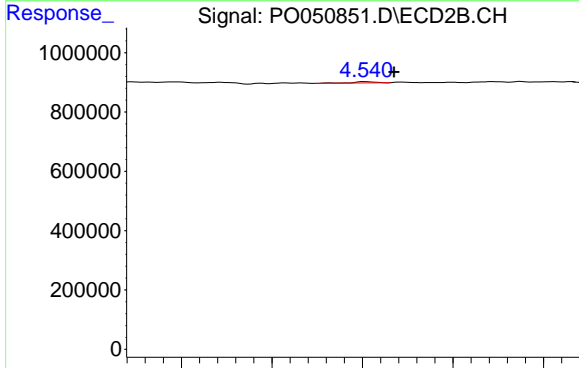


#18 AR-1242-3

R.T.: 0.000 min
 Exp R.T. : 5.605 min
 Response: 0
 Conc: N.D.

Instrument :
 ECD_O
 ClientSampleId :

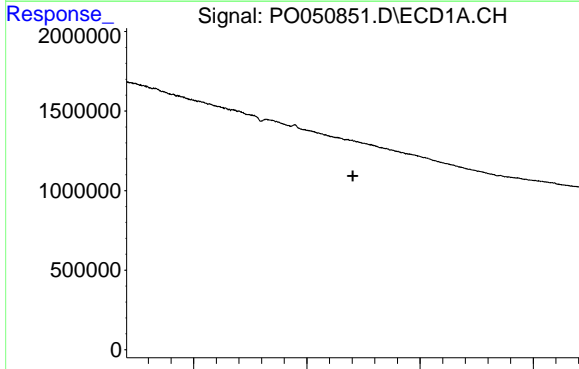
Time



#18 AR-1242-3

R.T.: 4.541 min
 Delta R.T.: -0.006 min
 Response: 15683
 Conc: 3.11 ng/ml

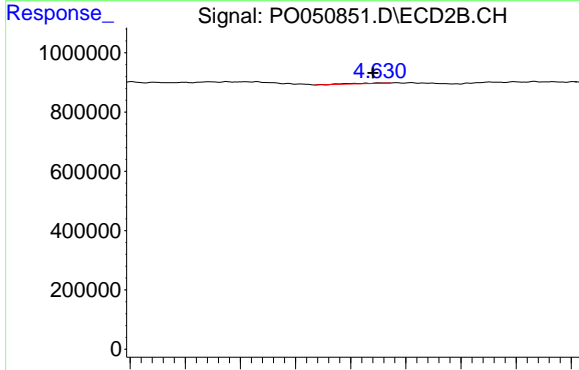
Time



#19 AR-1242-4

R.T.: 0.000 min
 Exp R.T. : 5.703 min
 Response: 0
 Conc: N.D.

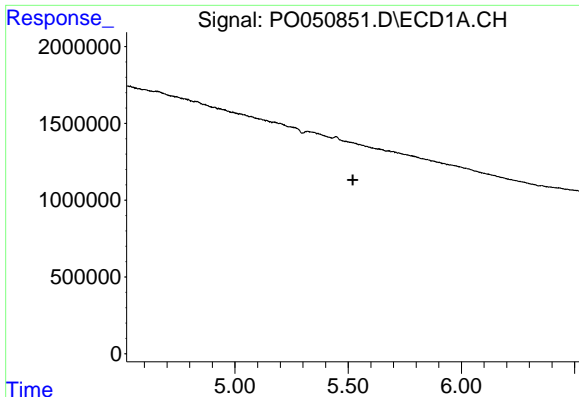
Time



#19 AR-1242-4

R.T.: 4.630 min
 Delta R.T.: 0.002 min
 Response: 17196
 Conc: 3.60 ng/ml

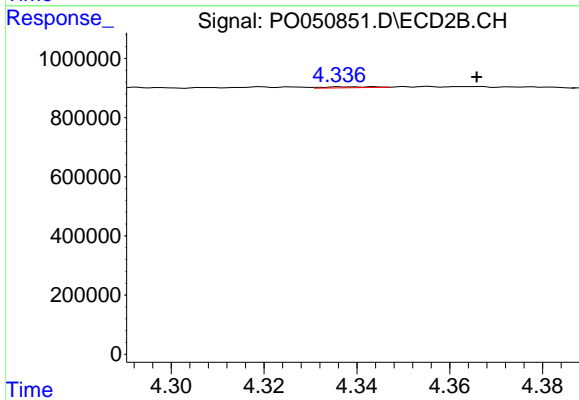
Time



#21 AR-1248-1

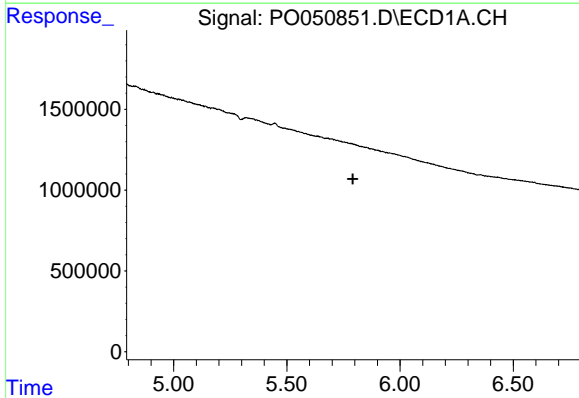
R.T.: 0.000 min
 Exp R.T. : 5.521 min
 Response: 0
 Conc: N.D.

Instrument :
 ECD_O
 ClientSampleId :



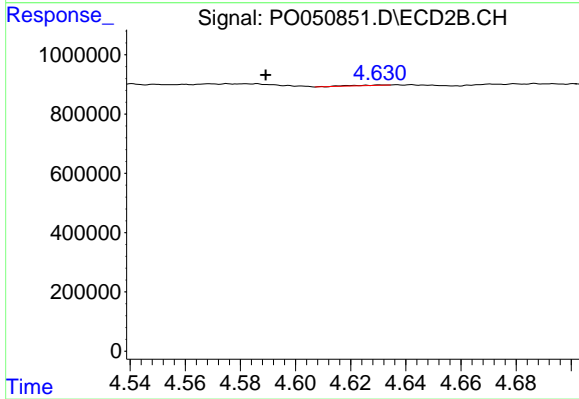
#21 AR-1248-1

R.T.: 4.344 min
 Delta R.T.: -0.022 min
 Response: 21921
 Conc: 4.75 ng/ml



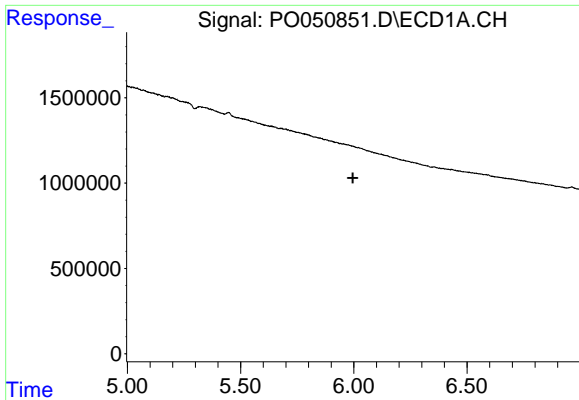
#22 AR-1248-2

R.T.: 0.000 min
 Exp R.T. : 5.792 min
 Response: 0
 Conc: N.D.



#22 AR-1248-2

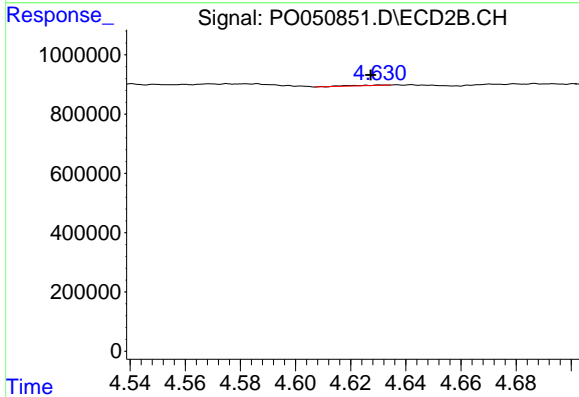
R.T.: 4.630 min
 Delta R.T.: 0.041 min
 Response: 17196
 Conc: 2.47 ng/ml



#23 AR-1248-3

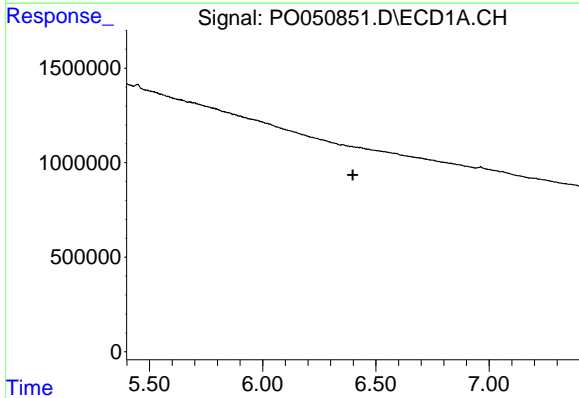
R.T.: 0.000 min
 Exp R.T. : 5.996 min
 Response: 0
 Conc: N.D.

Instrument :
 ECD_O
 ClientSampled :



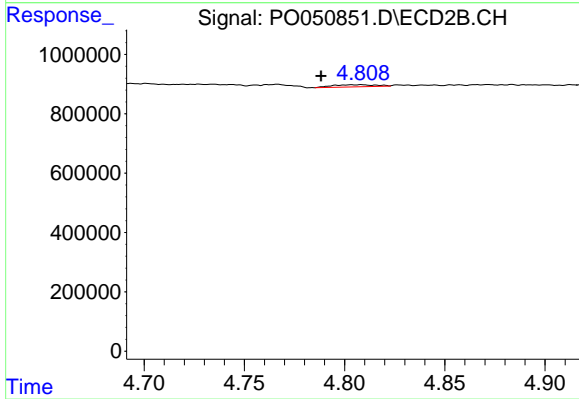
#23 AR-1248-3

R.T.: 4.630 min
 Delta R.T.: 0.003 min
 Response: 17196
 Conc: 2.46 ng/ml



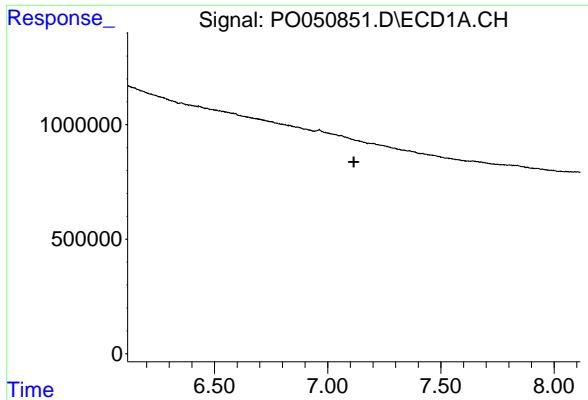
#24 AR-1248-4

R.T.: 0.000 min
 Exp R.T. : 6.398 min
 Response: 0
 Conc: N.D.



#24 AR-1248-4

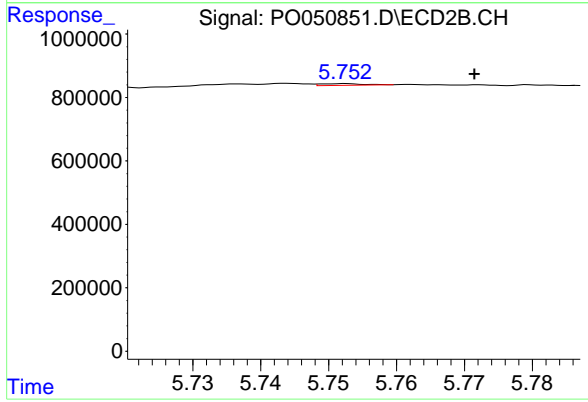
R.T.: 4.808 min
 Delta R.T.: 0.020 min
 Response: 111493
 Conc: 11.95 ng/ml



#31 AR-1260-1

R.T.: 0.000 min
 Exp R.T.: 7.116 min
 Response: 0
 Conc: N.D.

Instrument :
 ECD_O
 ClientSampleId :



#31 AR-1260-1

R.T.: 5.753 min
 Delta R.T.: -0.019 min
 Response: 23057
 Conc: 1.12 ng/ml