

Data Path : Z:\pestpcbsrv\HPCHEM1\ECD_0\Data\PO103118\
 Data File : PO050853.D
 Signal(s) : Signal #1: ECD1A.CH Signal #2: ECD2B.CH
 Acq On : 01 Nov 2018 2:10
 Operator : SM/SJ
 Sample : J5737-03
 Misc :
 ALS Vial : 34 Sample Multiplier: 1

Instrument :
 ECD_0
 ClientSampleId :

Integration File signal 1: autoint1.e
 Integration File signal 2: autoint2.e
 Quant Time: Nov 01 03:23:31 2018
 Quant Method : Z:\pestpcbsrv\HPCHEM1\ECD_0\methods\PO102918.M
 Quant Title : GC EXTRACTABLES
 QLast Update : Tue Oct 30 07:48:38 2018
 Response via : Initial Calibration
 Integrator: ChemStation 6890 Scale Mode: Small noise peaks clipped

Volume Inj. : 2 µl
 Signal #1 Phase : ZB-MR2 Signal #2 Phase: ZB-MR2
 Signal #1 Info : 30Mx0.32mmx 0.50µ Signal #2 Info : 30M x 0.32mm x 0.25µm

Compound	RT#1	RT#2	Resp#1	Resp#2	ng/ml	ng/ml

System Monitoring Compounds						
1) SA Tetrachlo...	4.354	3.348	10527289	4593346	21.061	21.133
2) SA Decachlor...	10.014	8.094	3650805	2759127	11.746	10.787
Target Compounds						
3) L1 AR-1016-1	0.000	4.345	0	7078	N.D.	0.770 #
4) L1 AR-1016-2	0.000	4.345	0	7078	N.D.	0.457 #
6) L1 AR-1016-4	0.000	4.632	0	33971	N.D.	5.583 #
7) L1 AR-1016-5	0.000	4.798	0	46296	N.D.	5.365 #
8) L2 AR-1221-1	0.000	3.607	0	39886	N.D.	23.597 #
9) L2 AR-1221-2	0.000	3.628	0	104162	N.D.	81.847 #
12) L3 AR-1232-2	0.000	4.345	0	7078	N.D.	1.480 #
14) L3 AR-1232-4	0.000	4.632	0	33971	N.D.	15.239 #
15) L3 AR-1232-5	0.000	4.798	0	46296	N.D.	17.406 #
16) L4 AR-1242-1	0.000	4.345	0	7078	N.D.	1.206 #
17) L4 AR-1242-2	0.000	4.345	0	7078	N.D.	0.708 #
19) L4 AR-1242-4	0.000	4.632	0	33971	N.D.	7.112 #
21) L5 AR-1248-1	0.000	4.345	0	7078	N.D.	1.534 #
22) L5 AR-1248-2	0.000	4.632	0	33971	N.D.	4.878 #
23) L5 AR-1248-3	0.000	4.632	0	33971	N.D.	4.860 #
24) L5 AR-1248-4	0.000	4.798	0	46296	N.D.	4.961 #
27) L6 AR-1254-2	0.000	5.322	0	469885	N.D.	27.068 #
29) L6 AR-1254-4	0.000	5.936	0	20584	N.D.	1.165 #
31) L7 AR-1260-1	0.000	5.772	0	123255	N.D.	5.961 #
32) L7 AR-1260-2	0.000	5.936	0	20584	N.D.	0.717 #

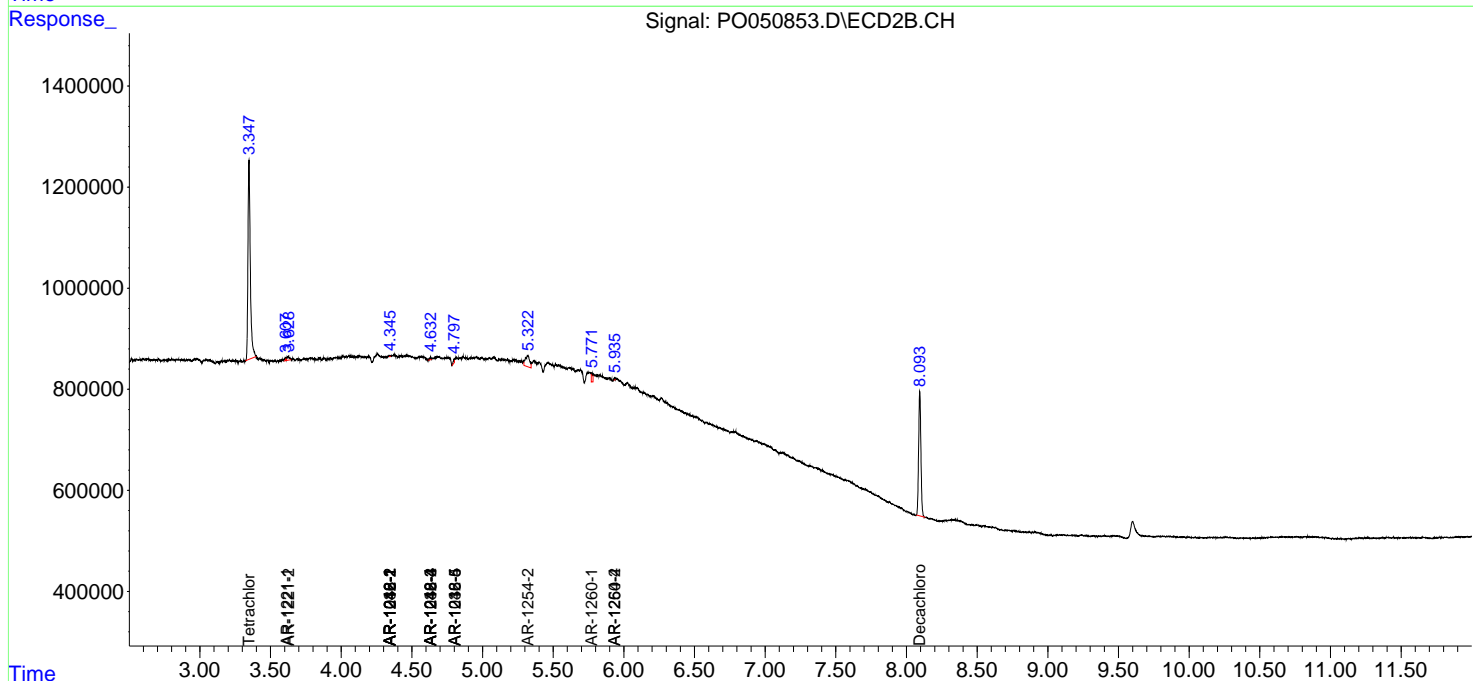
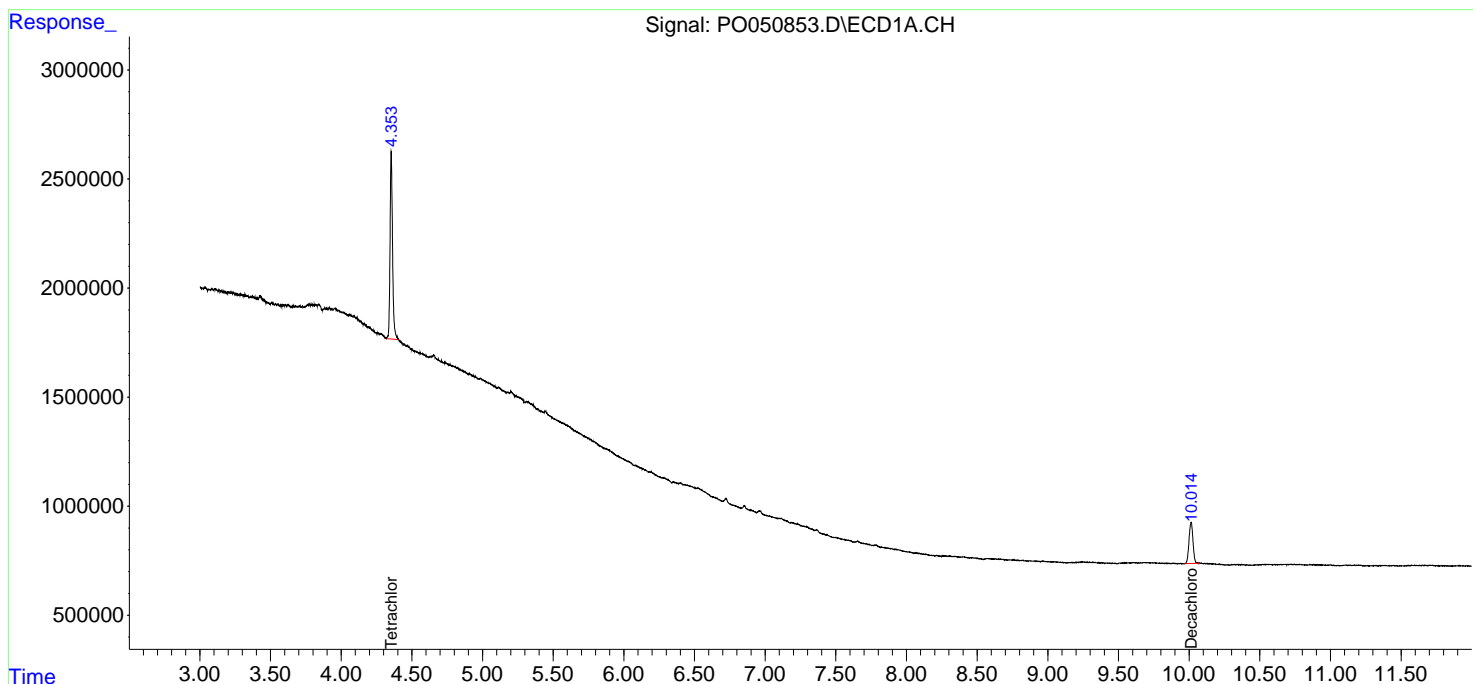
(f)=RT Delta > 1/2 Window (#)=Amounts differ by > 25% (m)=manual int.

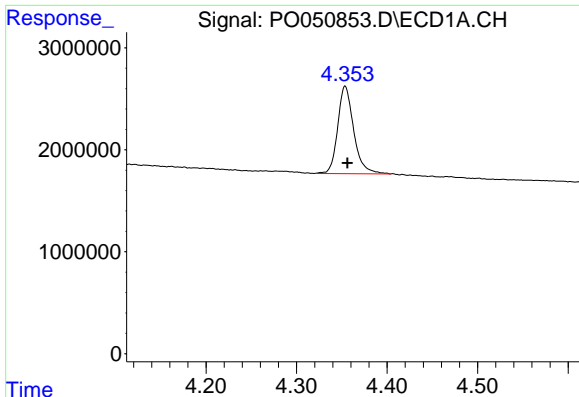
Data Path : Z:\pestpcbsrv\HPCHEM1\ECD_O\Data\PO103118\
 Data File : PO050853.D
 Signal(s) : Signal #1: ECD1A.CH Signal #2: ECD2B.CH
 Acq On : 01 Nov 2018 2:10
 Operator : SM/SJ
 Sample : J5737-03
 Misc :
 ALS Vial : 34 Sample Multiplier: 1

Instrument :
 ECD_O
 ClientSampleId :

Integration File signal 1: autoint1.e
 Integration File signal 2: autoint2.e
 Quant Time: Nov 01 03:23:31 2018
 Quant Method : Z:\pestpcbsrv\HPCHEM1\ECD_O\methods\PO102918.M
 Quant Title : GC EXTRACTABLES
 QLast Update : Tue Oct 30 07:48:38 2018
 Response via : Initial Calibration
 Integrator: ChemStation 6890 Scale Mode: Small noise peaks clipped

Volume Inj. : 2 µl
 Signal #1 Phase : ZB-MR1 Signal #2 Phase: ZB-MR2
 Signal #1 Info : 30Mx0.32mmx 0.50µ Signal #2 Info : 30M x 0.32mm x 0.25µm

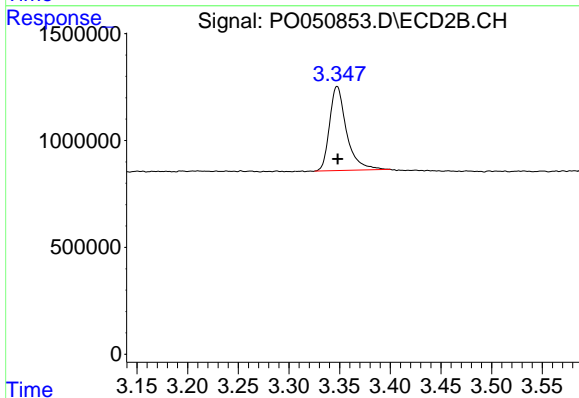




#1 Tetrachloro-m-xylene

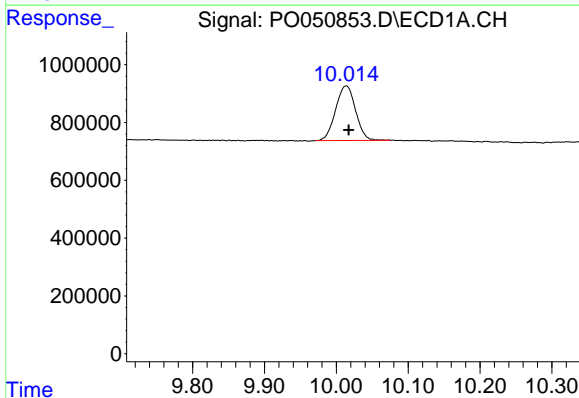
R.T.: 4.354 min
 Delta R.T.: -0.002 min
 Response: 10527289
 Conc: 21.06 ng/ml

Instrument :
 ECD_O
 ClientSampled :



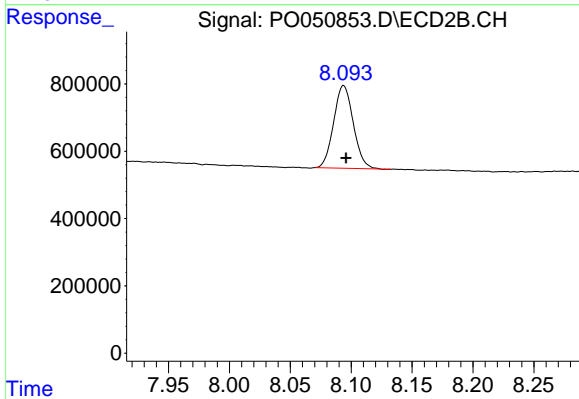
#1 Tetrachloro-m-xylene

R.T.: 3.348 min
 Delta R.T.: 0.000 min
 Response: 4593346
 Conc: 21.13 ng/ml



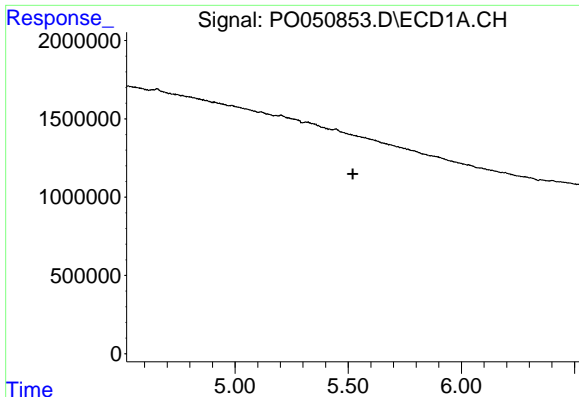
#2 Decachlorobiphenyl

R.T.: 10.014 min
 Delta R.T.: -0.003 min
 Response: 3650805
 Conc: 11.75 ng/ml



#2 Decachlorobiphenyl

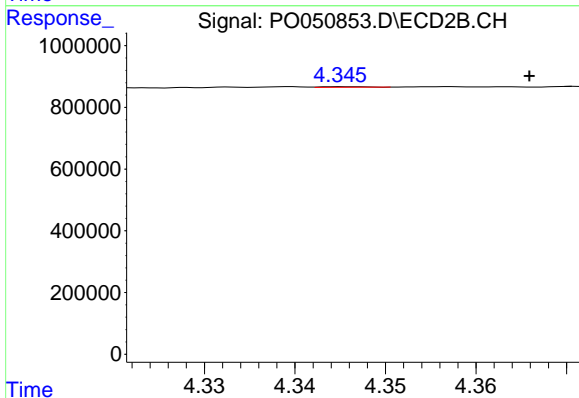
R.T.: 8.094 min
 Delta R.T.: -0.002 min
 Response: 2759127
 Conc: 10.79 ng/ml



#3 AR-1016-1

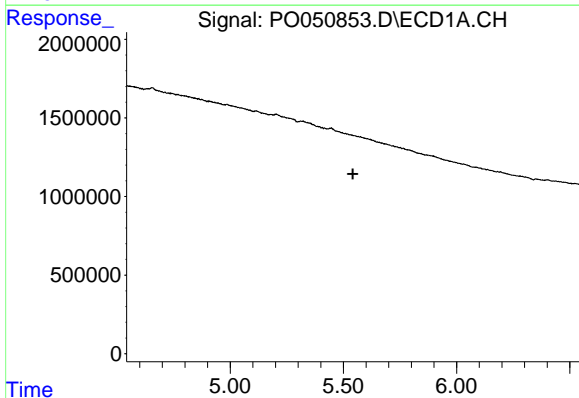
R.T.: 0.000 min
 Exp R.T. : 5.521 min
 Response: 0
 Conc: N.D.

Instrument :
 ECD_O
 ClientSampled :



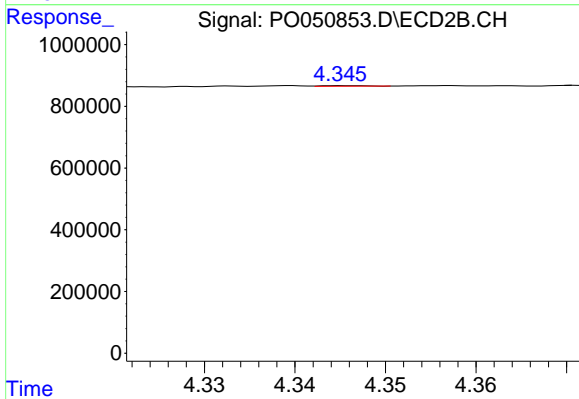
#3 AR-1016-1

R.T.: 4.345 min
 Delta R.T.: -0.021 min
 Response: 7078
 Conc: 0.77 ng/ml



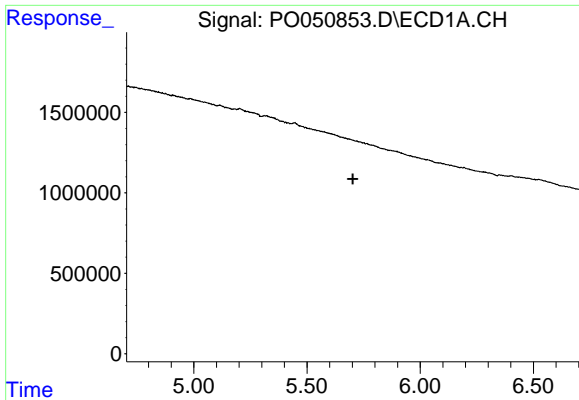
#4 AR-1016-2

R.T.: 0.000 min
 Exp R.T. : 5.542 min
 Response: 0
 Conc: N.D.



#4 AR-1016-2

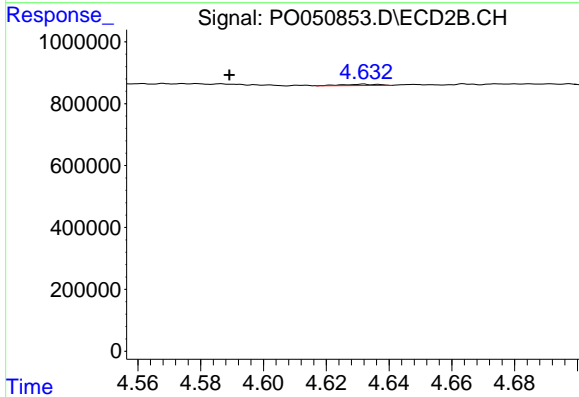
R.T.: 4.345 min
 Delta R.T.: -0.036 min
 Response: 7078
 Conc: 0.46 ng/ml



#6 AR-1016-4

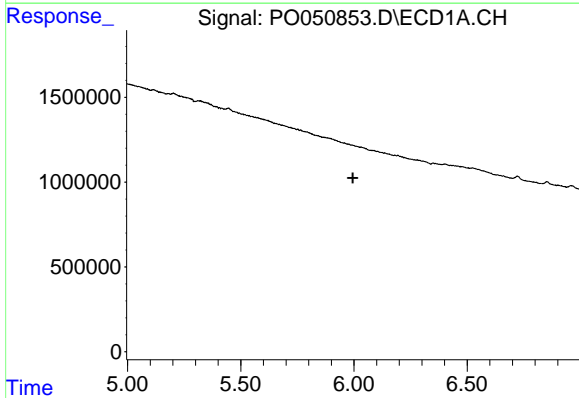
R.T.: 0.000 min
 Exp R.T. : 5.703 min
 Response: 0
 Conc: N.D.

Instrument :
 ECD_O
 ClientSampled :



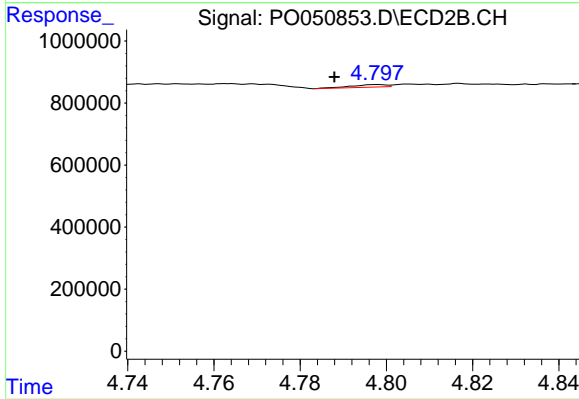
#6 AR-1016-4

R.T.: 4.632 min
 Delta R.T.: 0.043 min
 Response: 33971
 Conc: 5.58 ng/ml



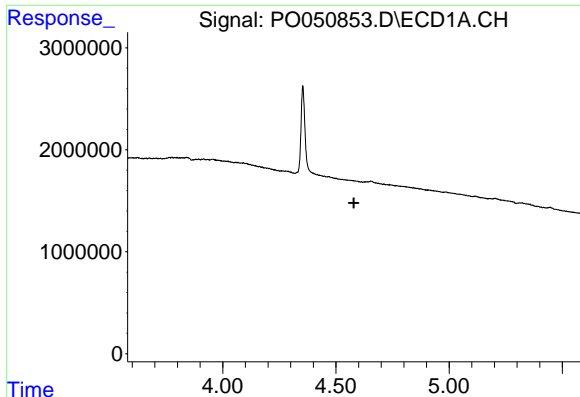
#7 AR-1016-5

R.T.: 0.000 min
 Exp R.T. : 5.995 min
 Response: 0
 Conc: N.D.



#7 AR-1016-5

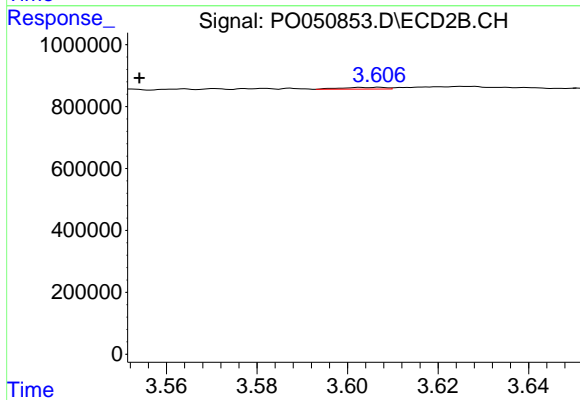
R.T.: 4.798 min
 Delta R.T.: 0.010 min
 Response: 46296
 Conc: 5.36 ng/ml



#8 AR-1221-1

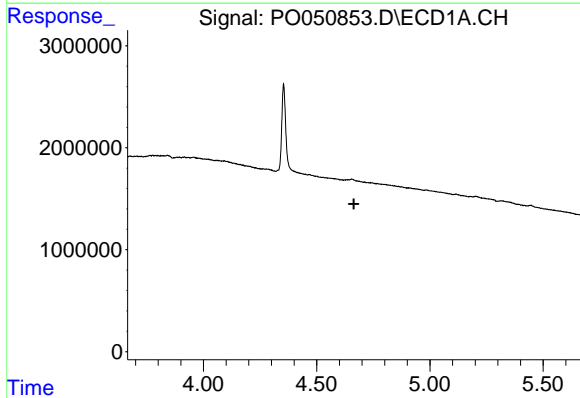
R.T.: 0.000 min
 Exp R.T. : 4.579 min
 Response: 0
 Conc: N.D.

Instrument :
 ECD_O
 ClientSampleId :



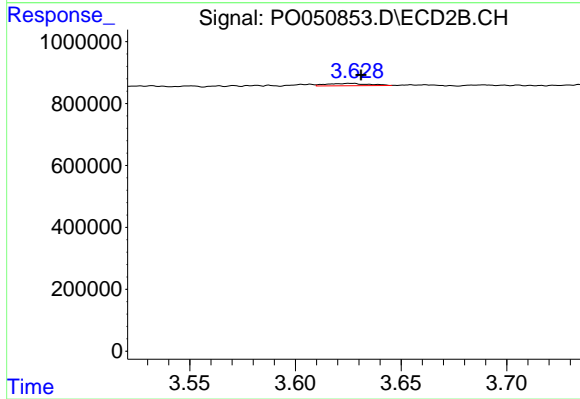
#8 AR-1221-1

R.T.: 3.607 min
 Delta R.T.: 0.053 min
 Response: 39886
 Conc: 23.60 ng/ml



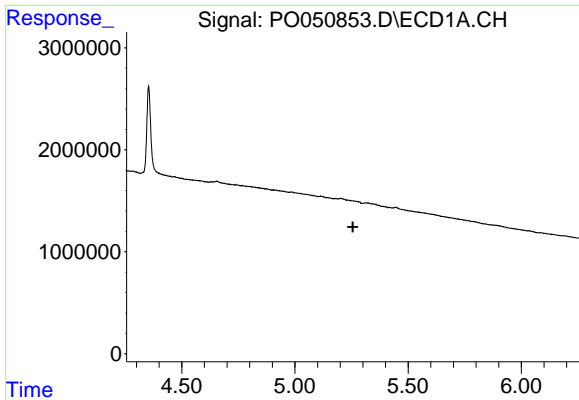
#9 AR-1221-2

R.T.: 0.000 min
 Exp R.T. : 4.664 min
 Response: 0
 Conc: N.D.



#9 AR-1221-2

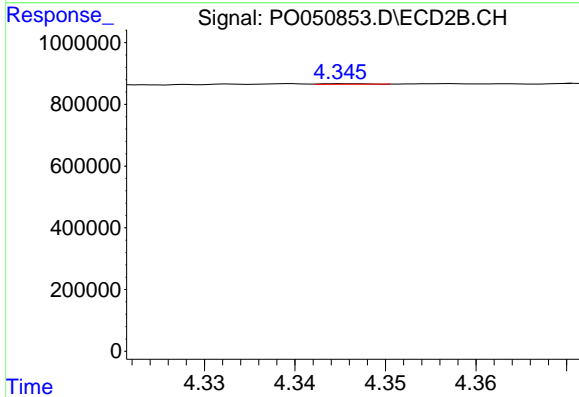
R.T.: 3.628 min
 Delta R.T.: -0.003 min
 Response: 104162
 Conc: 81.85 ng/ml



#12 AR-1232-2

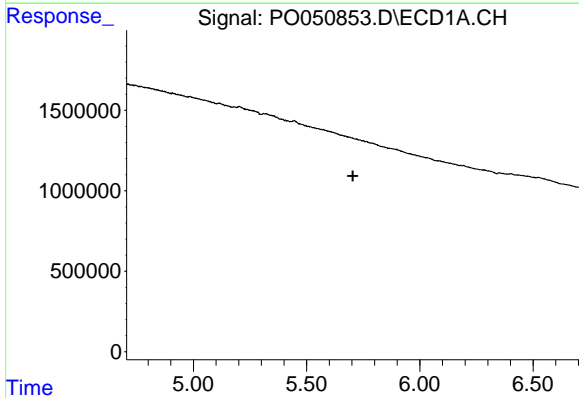
R.T.: 0.000 min
 Exp R.T. : 5.256 min
 Response: 0
 Conc: N.D.

Instrument :
 ECD_O
 ClientSampled :



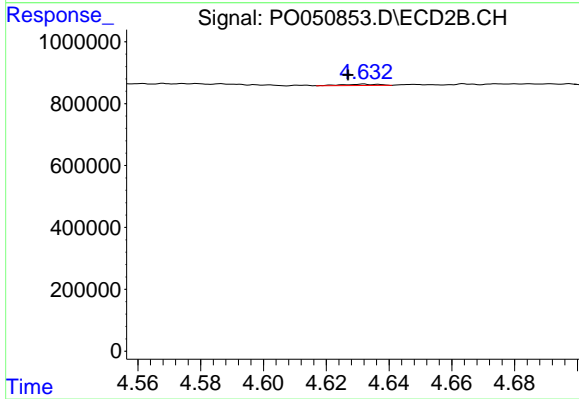
#12 AR-1232-2

R.T.: 4.345 min
 Delta R.T.: -0.037 min
 Response: 7078
 Conc: 1.48 ng/ml



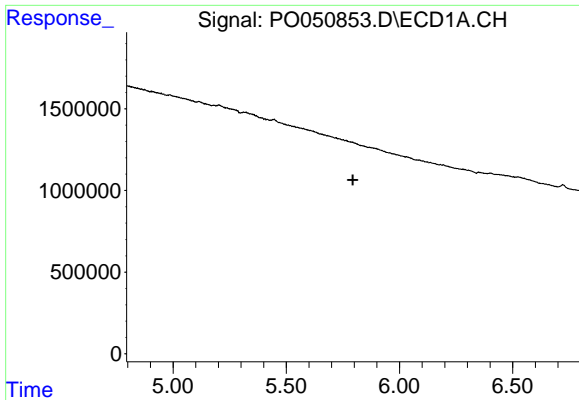
#14 AR-1232-4

R.T.: 0.000 min
 Exp R.T. : 5.705 min
 Response: 0
 Conc: N.D.



#14 AR-1232-4

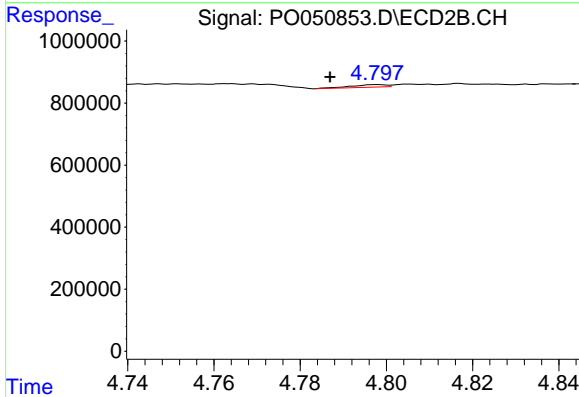
R.T.: 4.632 min
 Delta R.T.: 0.005 min
 Response: 33971
 Conc: 15.24 ng/ml



#15 AR-1232-5

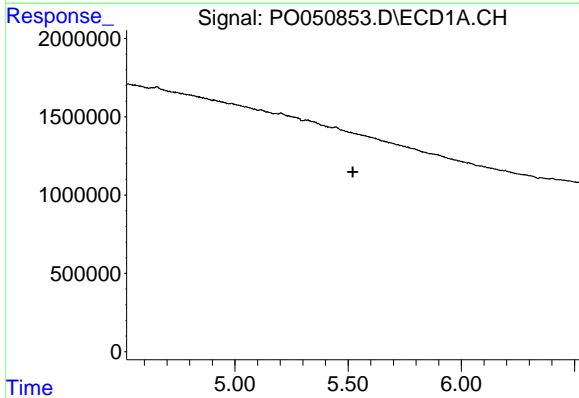
R.T.: 0.000 min
 Exp R.T. : 5.794 min
 Response: 0
 Conc: N.D.

Instrument :
 ECD_O
 ClientSampleId :



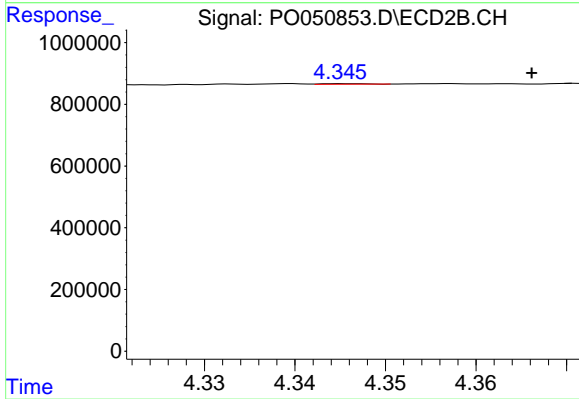
#15 AR-1232-5

R.T.: 4.798 min
 Delta R.T.: 0.011 min
 Response: 46296
 Conc: 17.41 ng/ml



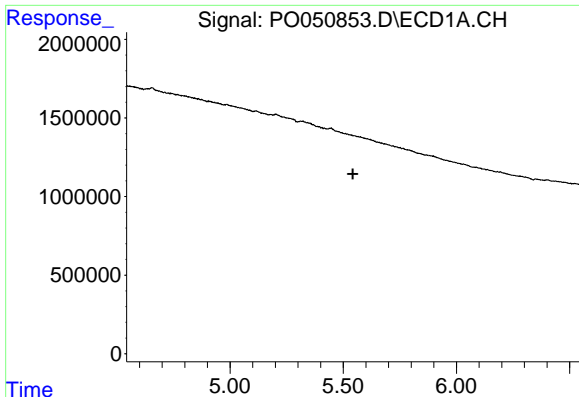
#16 AR-1242-1

R.T.: 0.000 min
 Exp R.T. : 5.521 min
 Response: 0
 Conc: N.D.



#16 AR-1242-1

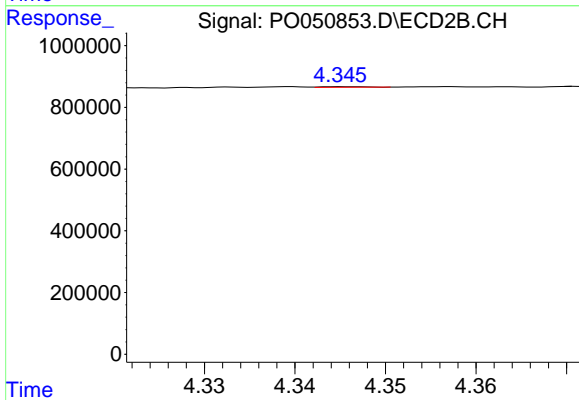
R.T.: 4.345 min
 Delta R.T.: -0.021 min
 Response: 7078
 Conc: 1.21 ng/ml



#17 AR-1242-2

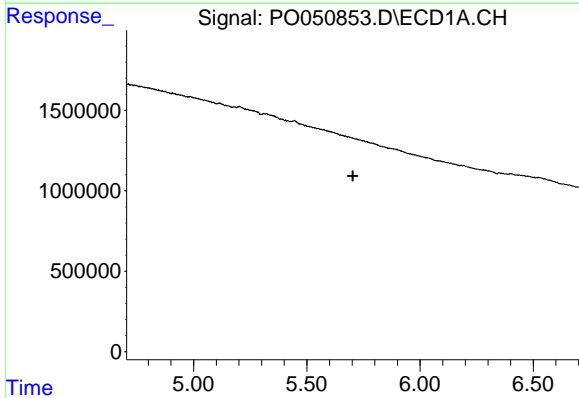
R.T.: 0.000 min
 Exp R.T. : 5.543 min
 Response: 0
 Conc: N.D.

Instrument :
 ECD_O
 ClientSampleId :



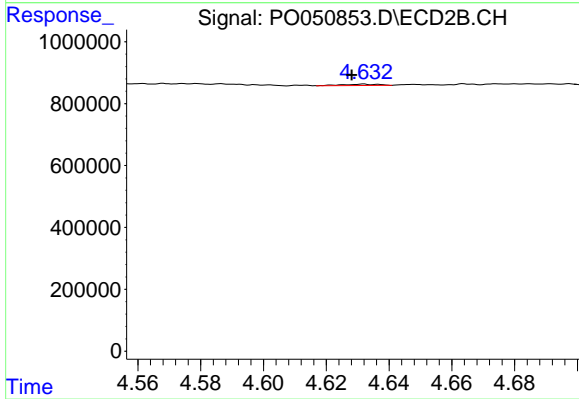
#17 AR-1242-2

R.T.: 4.345 min
 Delta R.T.: -0.037 min
 Response: 7078
 Conc: 0.71 ng/ml



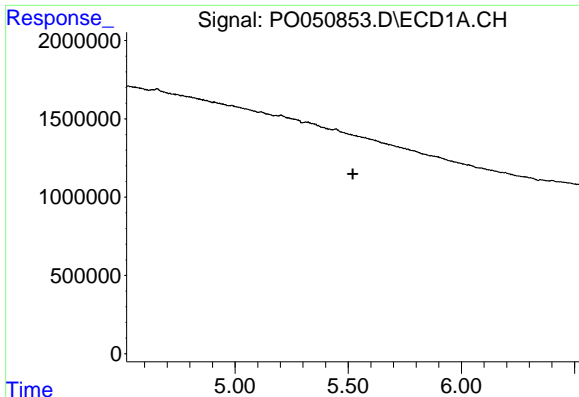
#19 AR-1242-4

R.T.: 0.000 min
 Exp R.T. : 5.703 min
 Response: 0
 Conc: N.D.



#19 AR-1242-4

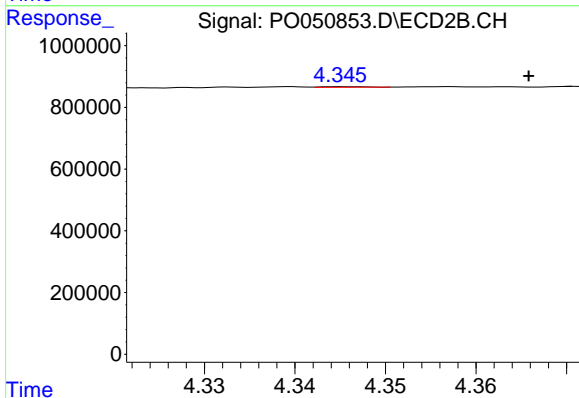
R.T.: 4.632 min
 Delta R.T.: 0.004 min
 Response: 33971
 Conc: 7.11 ng/ml



#21 AR-1248-1

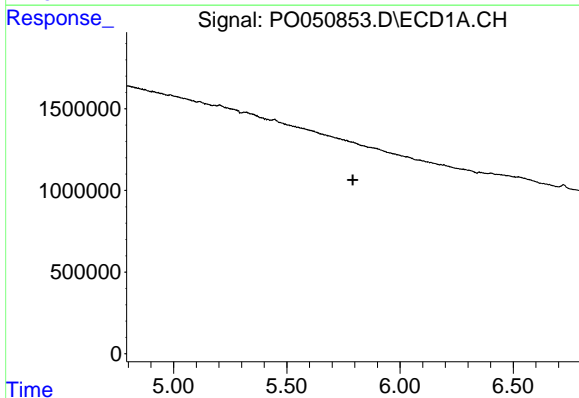
R.T.: 0.000 min
 Exp R.T. : 5.521 min
 Response: 0
 Conc: N.D.

Instrument :
 ECD_O
 ClientSampleId :



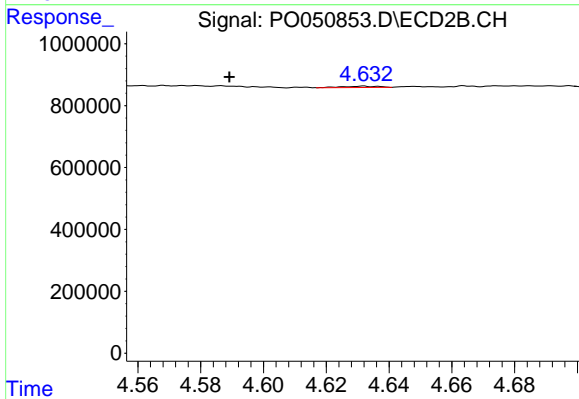
#21 AR-1248-1

R.T.: 4.345 min
 Delta R.T.: -0.020 min
 Response: 7078
 Conc: 1.53 ng/ml



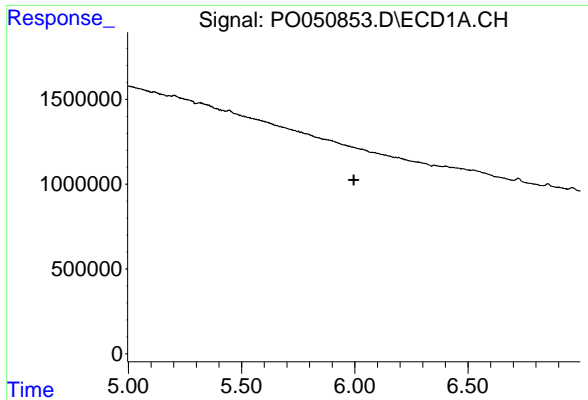
#22 AR-1248-2

R.T.: 0.000 min
 Exp R.T. : 5.792 min
 Response: 0
 Conc: N.D.



#22 AR-1248-2

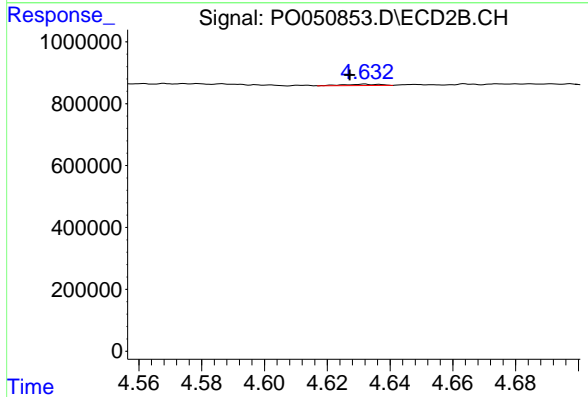
R.T.: 4.632 min
 Delta R.T.: 0.043 min
 Response: 33971
 Conc: 4.88 ng/ml



#23 AR-1248-3

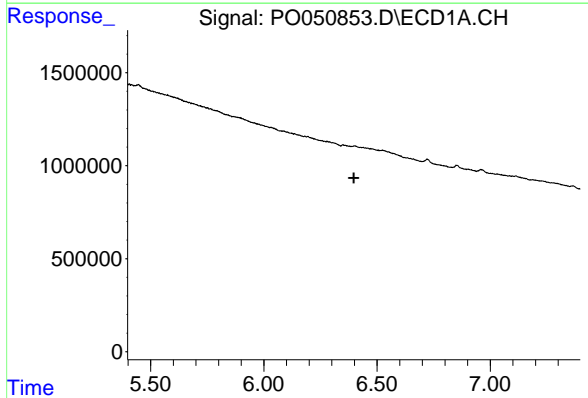
R.T.: 0.000 min
 Exp R.T. : 5.996 min
 Response: 0
 Conc: N.D.

Instrument :
 ECD_O
 ClientSampled :



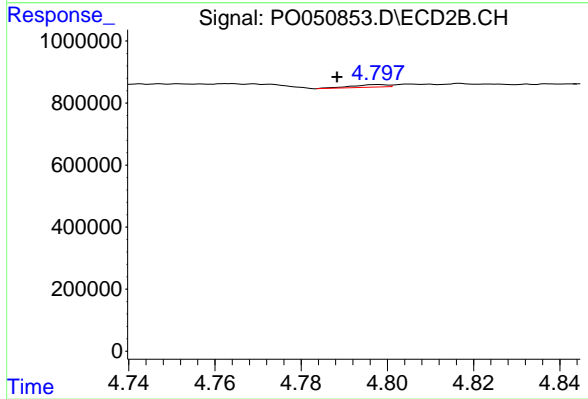
#23 AR-1248-3

R.T.: 4.632 min
 Delta R.T.: 0.005 min
 Response: 33971
 Conc: 4.86 ng/ml



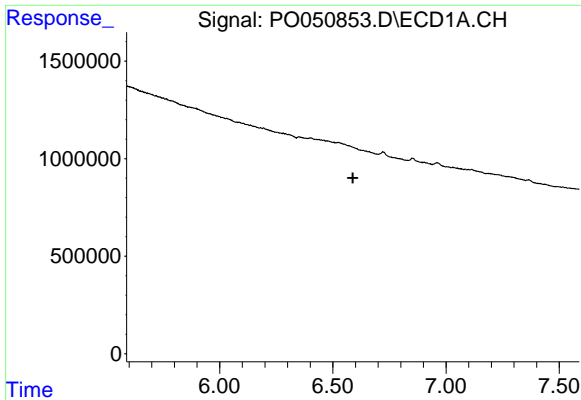
#24 AR-1248-4

R.T.: 0.000 min
 Exp R.T. : 6.398 min
 Response: 0
 Conc: N.D.



#24 AR-1248-4

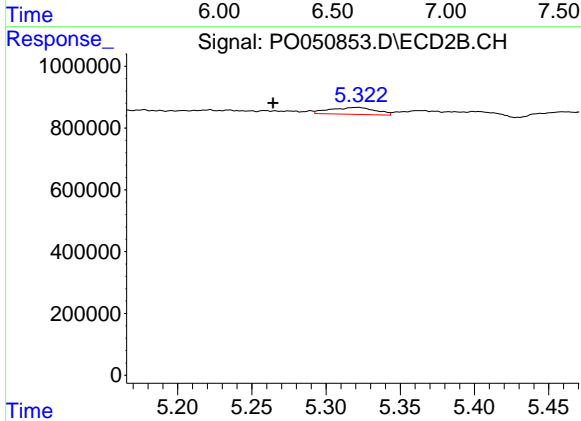
R.T.: 4.798 min
 Delta R.T.: 0.010 min
 Response: 46296
 Conc: 4.96 ng/ml



#27 AR-1254-2

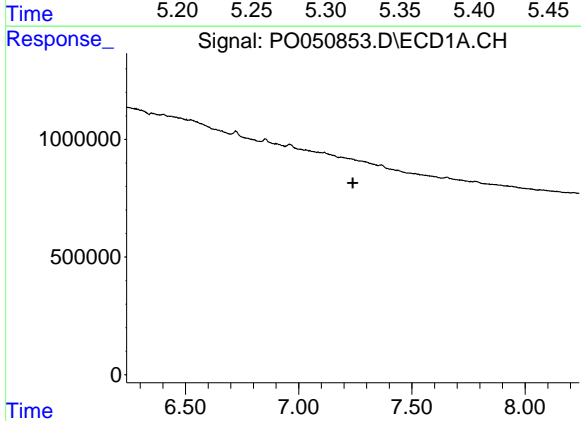
R.T.: 0.000 min
 Exp R.T. : 6.588 min
 Response: 0
 Conc: N.D.

Instrument :
 ECD_O
 ClientSampleId :



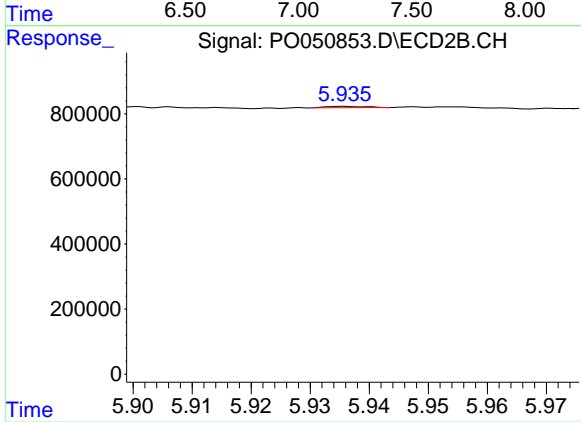
#27 AR-1254-2

R.T.: 5.322 min
 Delta R.T.: 0.058 min
 Response: 469885
 Conc: 27.07 ng/ml



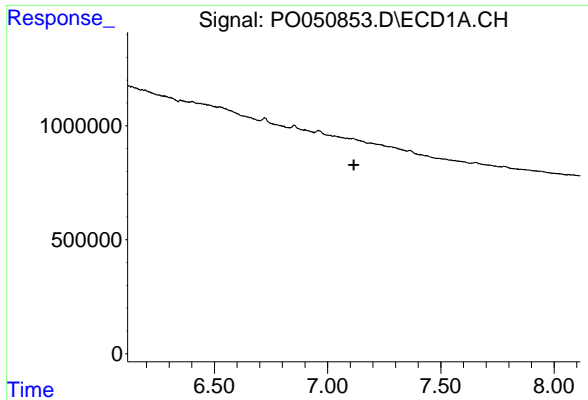
#29 AR-1254-4

R.T.: 0.000 min
 Exp R.T. : 7.239 min
 Response: 0
 Conc: N.D.



#29 AR-1254-4

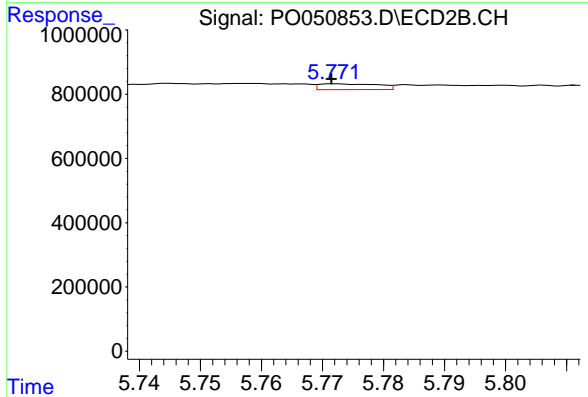
R.T.: 5.936 min
 Delta R.T.: 0.067 min
 Response: 20584
 Conc: 1.16 ng/ml



#31 AR-1260-1

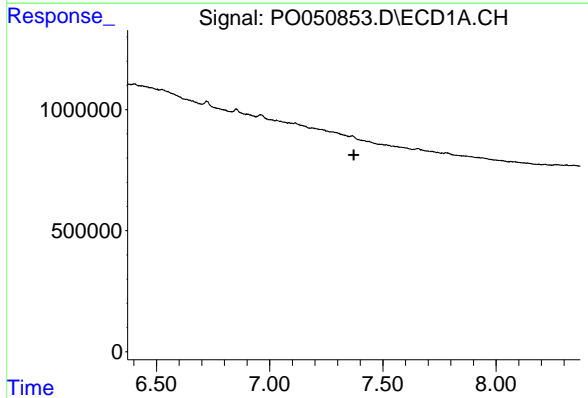
R.T.: 0.000 min
 Exp R.T. : 7.116 min
 Response: 0
 Conc: N.D.

Instrument :
 ECD_O
 ClientSampleId :



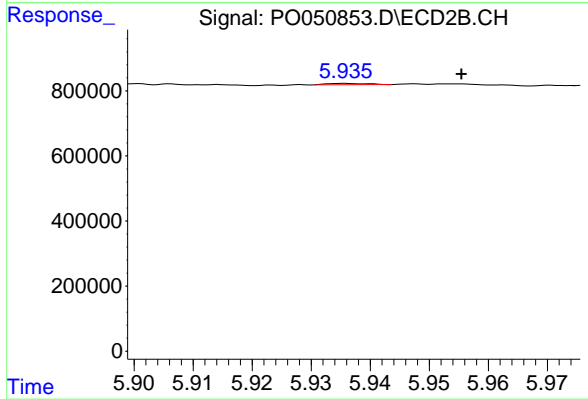
#31 AR-1260-1

R.T.: 5.772 min
 Delta R.T.: 0.000 min
 Response: 123255
 Conc: 5.96 ng/ml



#32 AR-1260-2

R.T.: 0.000 min
 Exp R.T. : 7.372 min
 Response: 0
 Conc: N.D.



#32 AR-1260-2

R.T.: 5.936 min
 Delta R.T.: -0.020 min
 Response: 20584
 Conc: 0.72 ng/ml