

Data Path : Z:\pestpcbsrv\HPCHEM1\ECD_0\Data\PO103120\
 Data File : PO072921.D
 Signal(s) : Signal #1: ECD1A.CH Signal #2: ECD2B.CH
 Acq On : 30 Oct 2020 16:28
 Operator : DD\AJ
 Sample : AR1268ICC500
 Misc :
 ALS Vial : 7 Sample Multiplier: 1

Instrument :
 ECD_0
 ClientSampleId :
 AR1268ICC500

Integration File signal 1: autoint1.e
 Integration File signal 2: autoint2.e
 Quant Time: Oct 31 06:46:54 2020
 Quant Method : Z:\pestpcbsrv\HPCHEM1\ECD_0\methods\PO102620.M
 Quant Title : GC EXTRACTABLES
 QLast Update : Sat Oct 31 06:45:25 2020
 Response via : Initial Calibration
 Integrator: ChemStation 6890 Scale Mode: Small noise peaks clipped

Volume Inj. : 2 µl
 Signal #1 Phase : ZB-MR1 Signal #2 Phase: ZB-MR2
 Signal #1 Info : 30Mx0.32mmx 0.50µ Signal #2 Info : 30M x 0.32mm x 0.25µm

Compound	RT#1	RT#2	Resp#1	Resp#2	ng/ml	ng/ml

System Monitoring Compounds						
1) SA Tetrachlo...	4.952	4.023	2724733	1890668	50.000	50.000
2) SA Decachlor...	10.985	9.308	3853327	3280898	50.000	50.000
Target Compounds						
41) L9 AR-1268-1	9.471	8.224	3458771	2899434	500.000	500.000
42) L9 AR-1268-2	9.569	8.288	3150917	2619287	500.000	500.000
43) L9 AR-1268-3	9.795	8.497	2693531	2311227	500.000	500.000
44) L9 AR-1268-4	10.234	8.780	1170961	1026827	500.000	500.000
45) L9 AR-1268-5	10.648	9.062	8193500	6989539	500.000	500.000

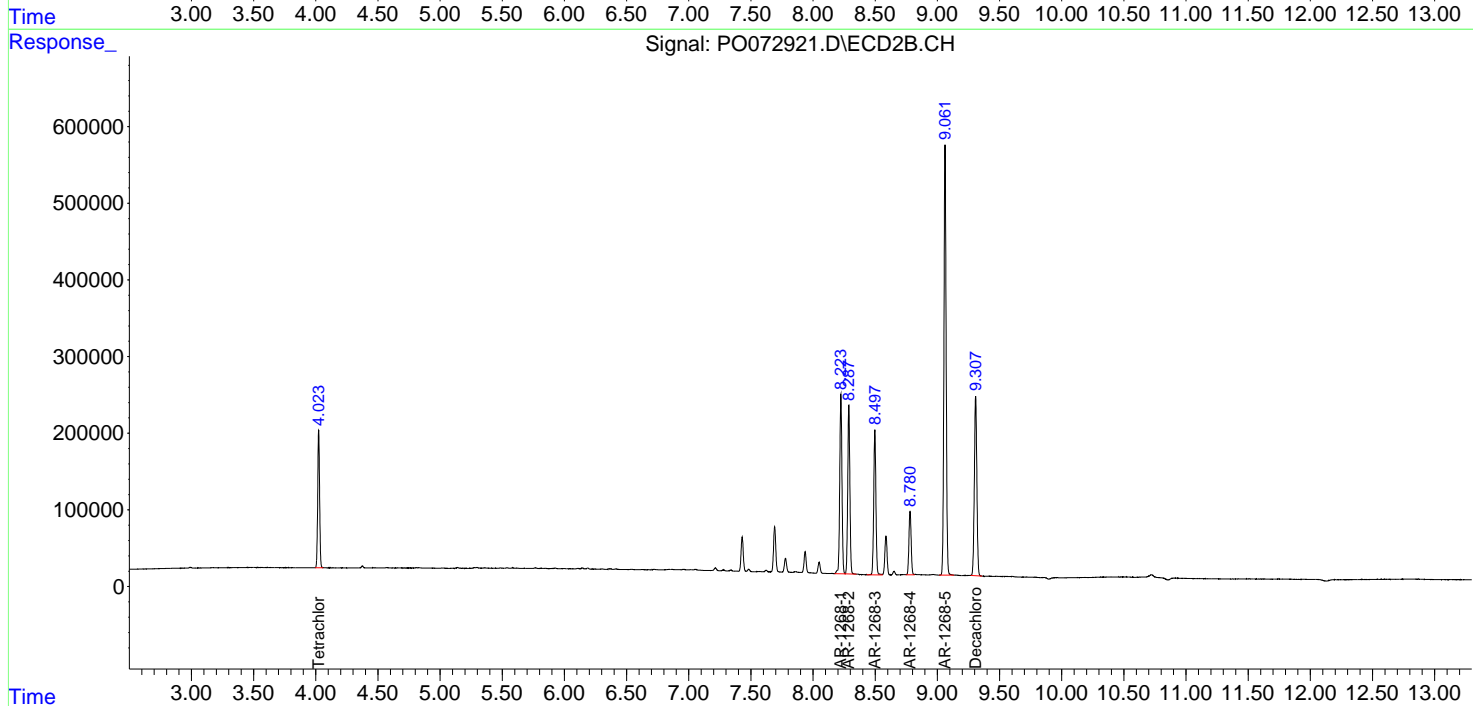
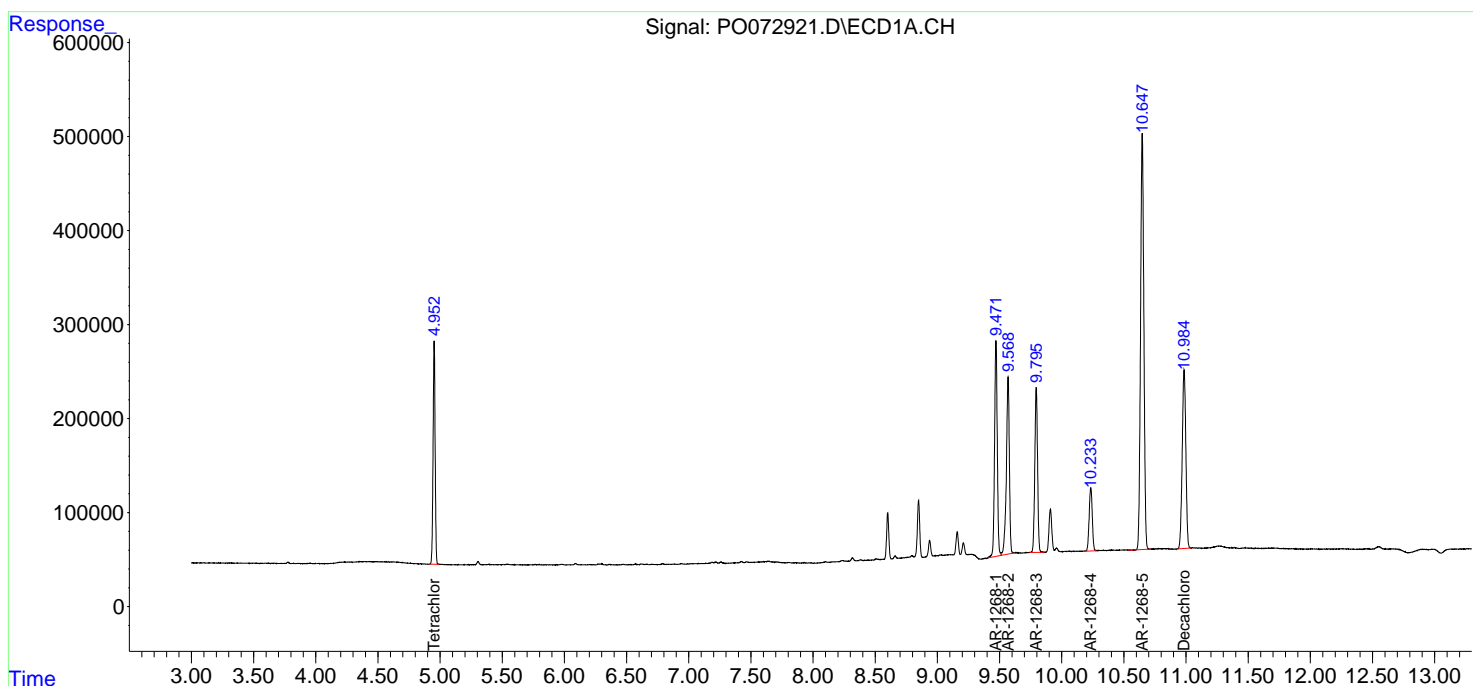
(f)=RT Delta > 1/2 Window (#)=Amounts differ by > 25% (m)=manual int.

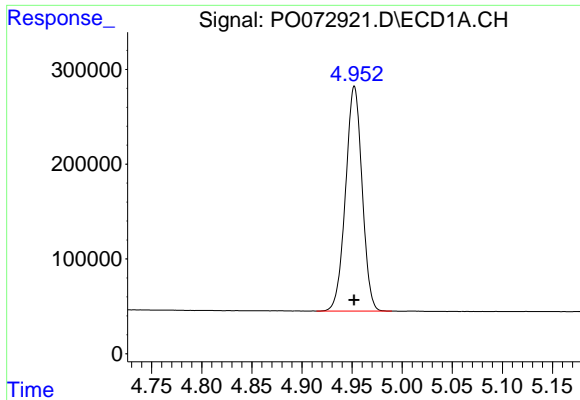
Data Path : Z:\pestpcbsrv\HPCHEM1\ECD_0\Data\PO103120\
 Data File : PO072921.D
 Signal(s) : Signal #1: ECD1A.CH Signal #2: ECD2B.CH
 Acq On : 30 Oct 2020 16:28
 Operator : DD\AJ
 Sample : AR1268ICC500
 Misc :
 ALS Vial : 7 Sample Multiplier: 1

Instrument :
 ECD_O
 ClientSampleID :
 AR1268ICC500

Integration File signal 1: autoint1.e
 Integration File signal 2: autoint2.e
 Quant Time: Oct 31 06:46:54 2020
 Quant Method : Z:\pestpcbsrv\HPCHEM1\ECD_0\methods\PO102620.M
 Quant Title : GC EXTRACTABLES
 QLast Update : Sat Oct 31 06:45:25 2020
 Response via : Initial Calibration
 Integrator: ChemStation 6890 Scale Mode: Small noise peaks clipped

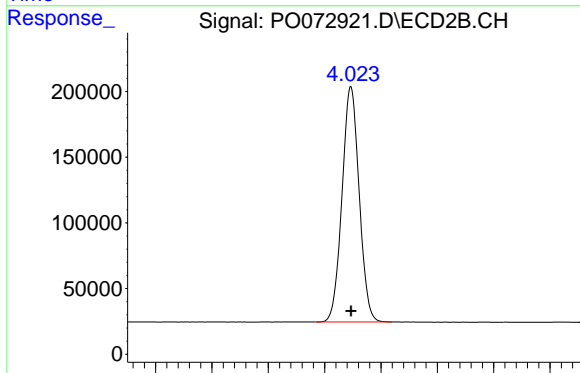
Volume Inj. : 2 µl
 Signal #1 Phase : ZB-MR1 Signal #2 Phase: ZB-MR2
 Signal #1 Info : 30Mx0.32mmx 0.50µ Signal #2 Info : 30M x 0.32mm x 0.25µm



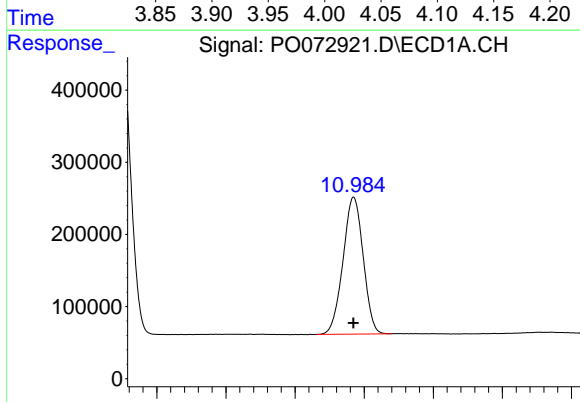


#1 Tetrachloro-m-xylene
 R.T.: 4.952 min
 Delta R.T.: 0.000 min
 Response: 2724733
 Conc: 50.00 ng/ml

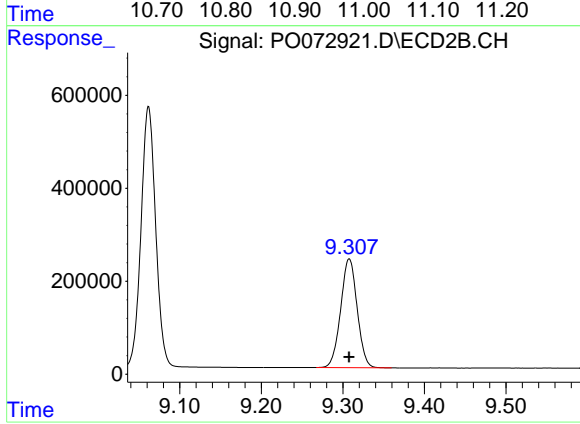
Instrument :
 ECD_O
 ClientSampleId :
 AR1268ICC500



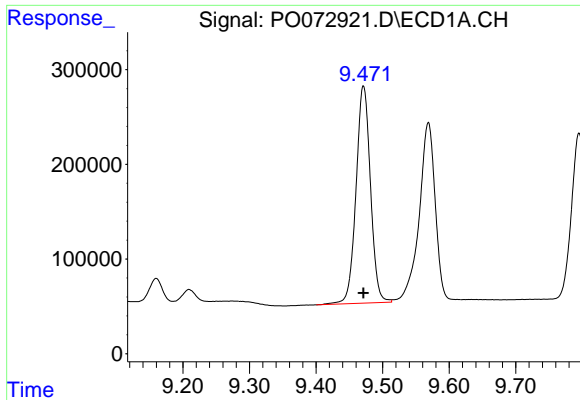
#1 Tetrachloro-m-xylene
 R.T.: 4.023 min
 Delta R.T.: 0.000 min
 Response: 1890668
 Conc: 50.00 ng/ml



#2 Decachlorobiphenyl
 R.T.: 10.985 min
 Delta R.T.: 0.000 min
 Response: 3853327
 Conc: 50.00 ng/ml

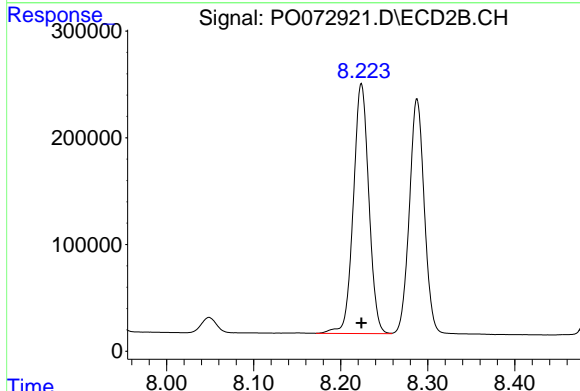


#2 Decachlorobiphenyl
 R.T.: 9.308 min
 Delta R.T.: 0.000 min
 Response: 3280898
 Conc: 50.00 ng/ml

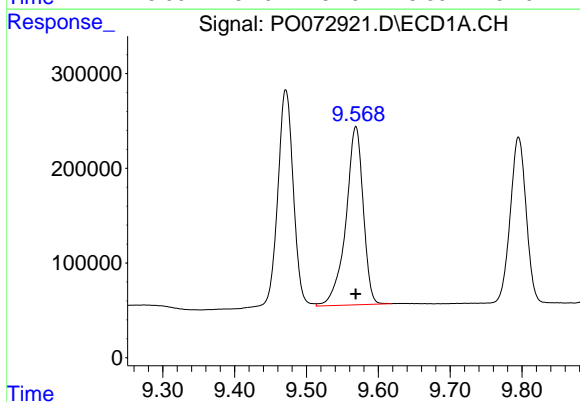


#41 AR-1268-1
 R.T.: 9.471 min
 Delta R.T.: 0.000 min
 Response: 3458771
 Conc: 500.00 ng/ml

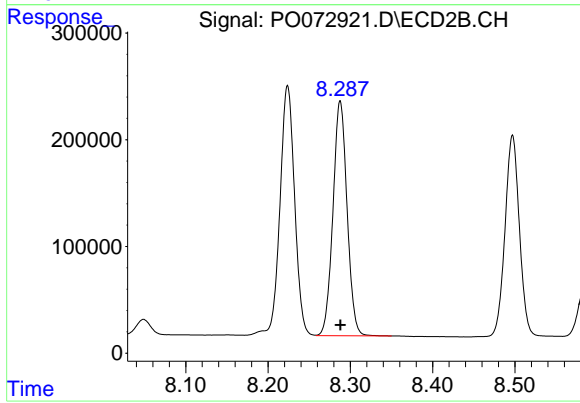
Instrument :
 ECD_O
 ClientSampled :
 AR1268ICC500



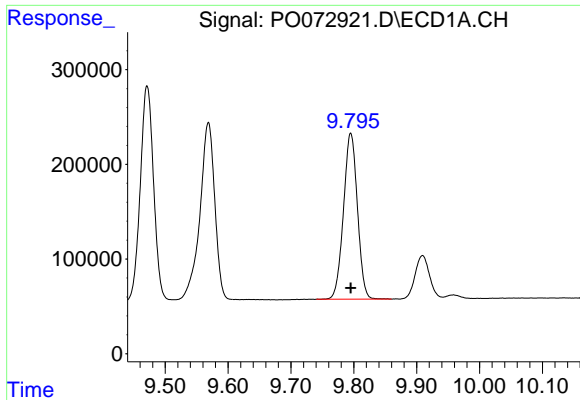
#41 AR-1268-1
 R.T.: 8.224 min
 Delta R.T.: 0.000 min
 Response: 2899434
 Conc: 500.00 ng/ml



#42 AR-1268-2
 R.T.: 9.569 min
 Delta R.T.: 0.000 min
 Response: 3150917
 Conc: 500.00 ng/ml



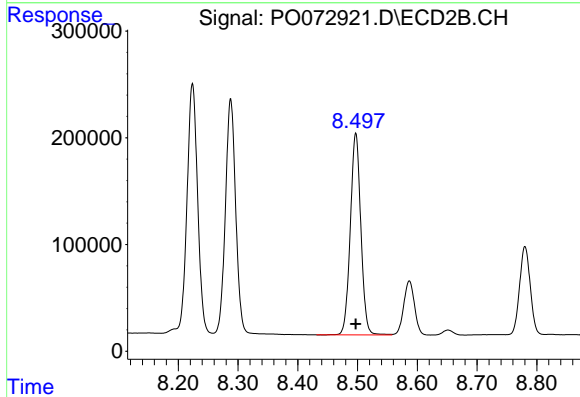
#42 AR-1268-2
 R.T.: 8.288 min
 Delta R.T.: 0.000 min
 Response: 2619287
 Conc: 500.00 ng/ml



#43 AR-1268-3

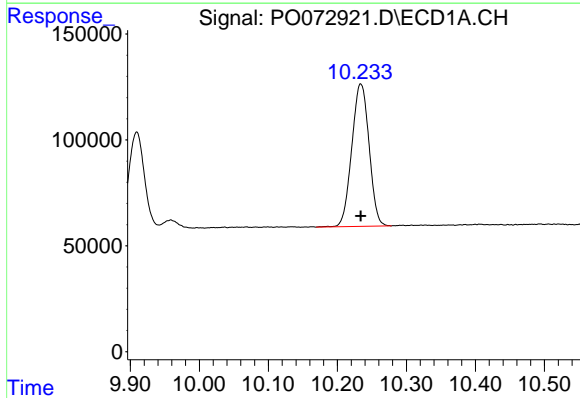
R.T.: 9.795 min
 Delta R.T.: 0.000 min
 Response: 2693531
 Conc: 500.00 ng/ml

Instrument :
 ECD_O
 ClientSampleId :
 AR1268ICC500



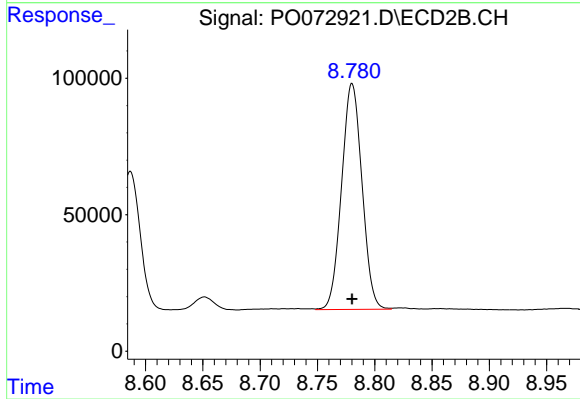
#43 AR-1268-3

R.T.: 8.497 min
 Delta R.T.: 0.000 min
 Response: 2311227
 Conc: 500.00 ng/ml



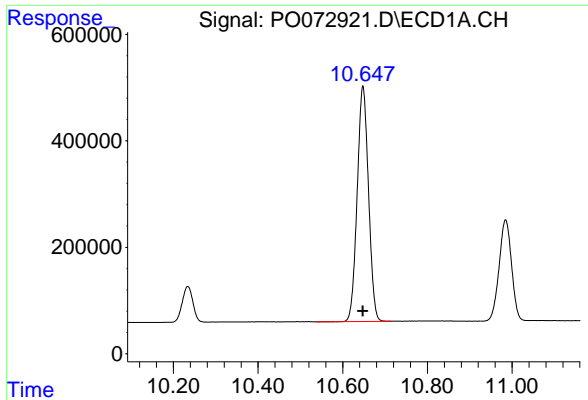
#44 AR-1268-4

R.T.: 10.234 min
 Delta R.T.: 0.000 min
 Response: 1170961
 Conc: 500.00 ng/ml



#44 AR-1268-4

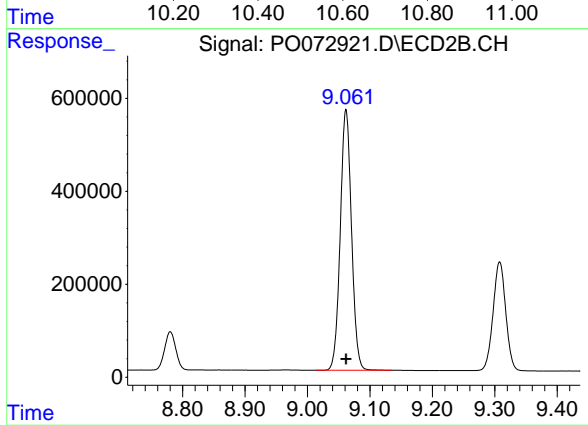
R.T.: 8.780 min
 Delta R.T.: 0.000 min
 Response: 1026827
 Conc: 500.00 ng/ml



#45 AR-1268-5

R.T.: 10.648 min
Delta R.T.: 0.000 min
Response: 8193500
Conc: 500.00 ng/ml

Instrument :
ECD_O
ClientSampled :
AR1268ICC500



#45 AR-1268-5

R.T.: 9.062 min
Delta R.T.: 0.000 min
Response: 6989539
Conc: 500.00 ng/ml