

Data Path : Z:\pestpcbsrv\HPCHEM1\ECD_0\Data\PO103120\
 Data File : PO072940.D
 Signal(s) : Signal #1: ECD1A.CH Signal #2: ECD2B.CH
 Acq On : 30 Oct 2020 21:52
 Operator : DD\AJ
 Sample : AR1268CCC500
 Misc :
 ALS Vial : 7 Sample Multiplier: 1

Instrument :
 ECD_0
 ClientSampleId :
 AR1268CCC500

Integration File signal 1: autoint1.e
 Integration File signal 2: autoint2.e
 Quant Time: Oct 31 07:36:55 2020
 Quant Method : Z:\pestpcbsrv\HPCHEM1\ECD_0\methods\PO102620.M
 Quant Title : GC EXTRACTABLES
 QLast Update : Sat Oct 31 07:06:26 2020
 Response via : Initial Calibration
 Integrator: ChemStation 6890 Scale Mode: Small noise peaks clipped

Volume Inj. : 2 µl
 Signal #1 Phase : ZB-MR1 Signal #2 Phase: ZB-MR2
 Signal #1 Info : 30Mx0.32mmx 0.50µ Signal #2 Info : 30M x 0.32mm x 0.25µm

Compound	RT#1	RT#2	Resp#1	Resp#2	ng/ml	ng/ml

System Monitoring Compounds						
1) SA Tetrachlo...	4.948	4.024	2811635	1905626	60.981	54.373
2) SA Decachlor...	10.978	9.305	3936698	3352759	106.555	100.536
Target Compounds						
41) L9 AR-1268-1	9.466	8.222	3476183	2943636	472.102	493.659
42) L9 AR-1268-2	9.563	8.286	3224317	2674276	489.007	492.406
43) L9 AR-1268-3	9.790	8.495	2789493	2350674	500.742	482.232
44) L9 AR-1268-4	10.229	8.779	1204577	1052156	516.534	481.871
45) L9 AR-1268-5	10.643	9.060	8432263	7179272	497.304	498.514

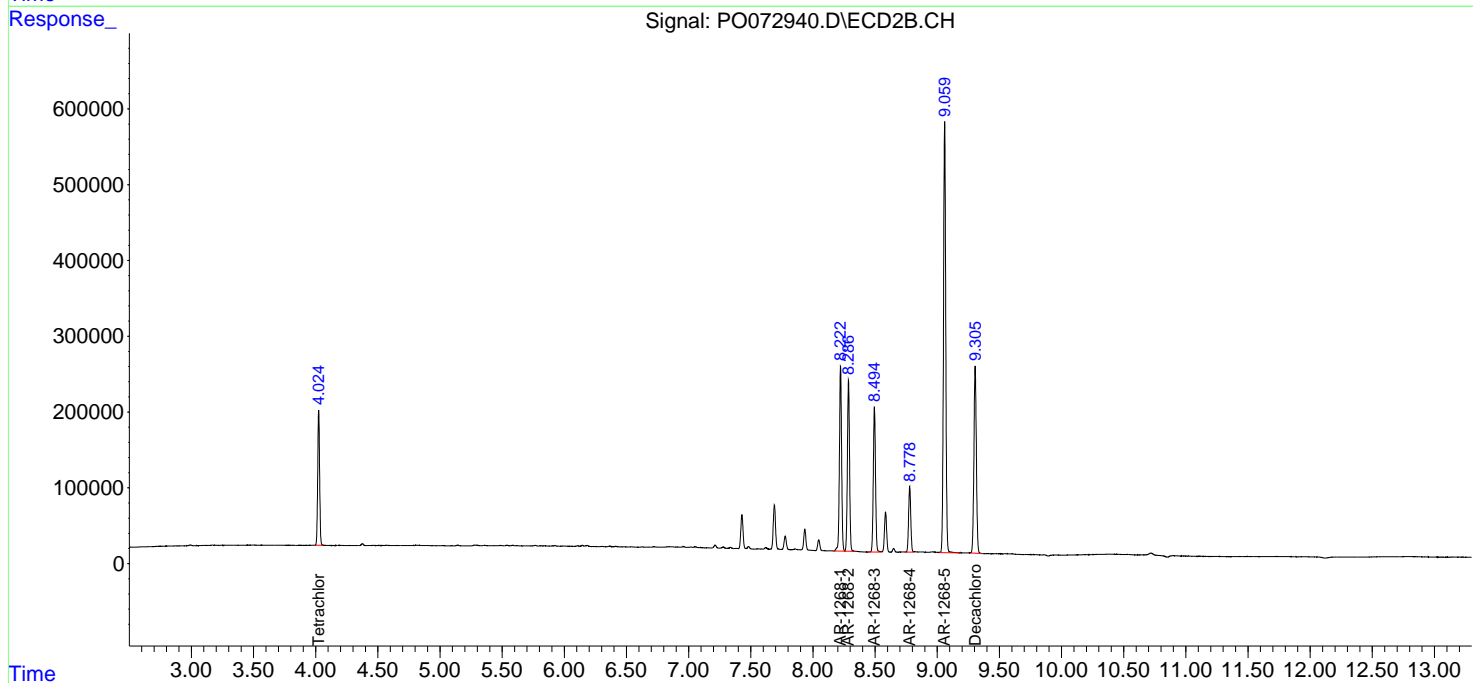
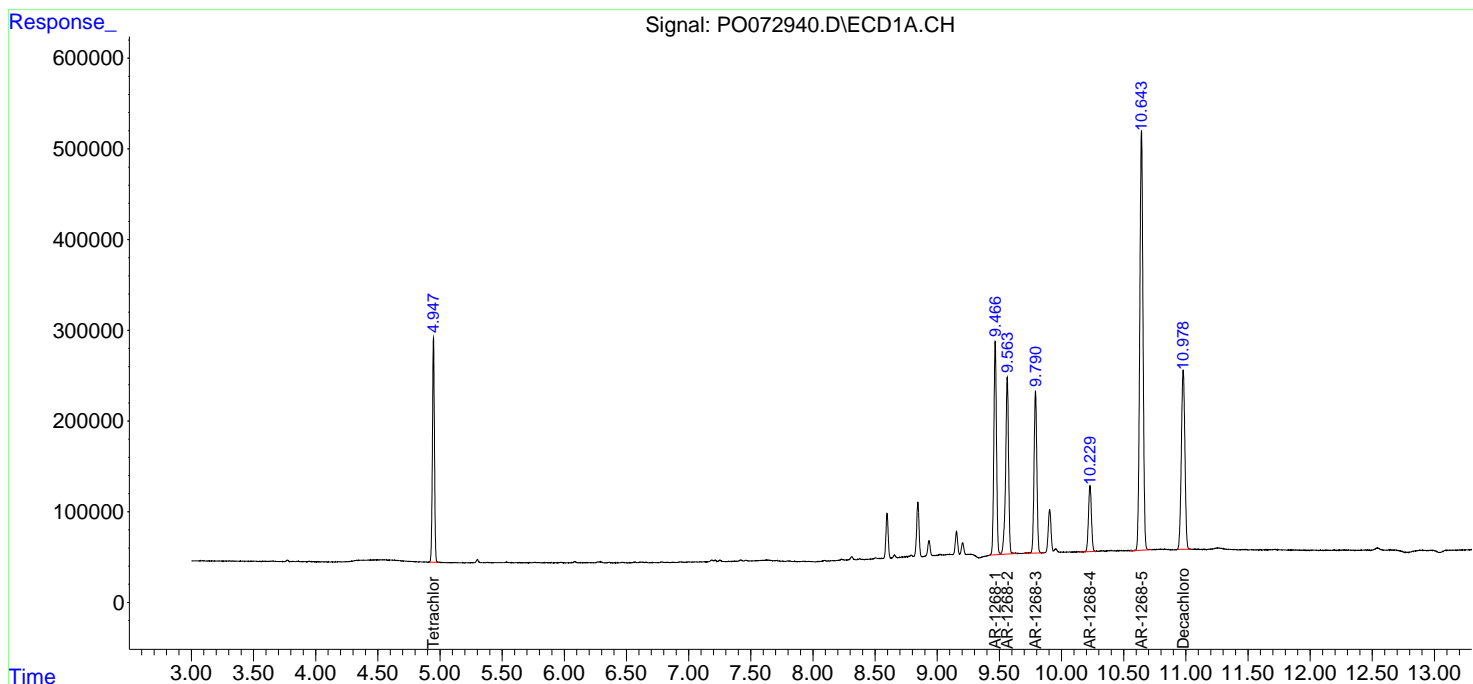
(f)=RT Delta > 1/2 Window (#)=Amounts differ by > 25% (m)=manual int.

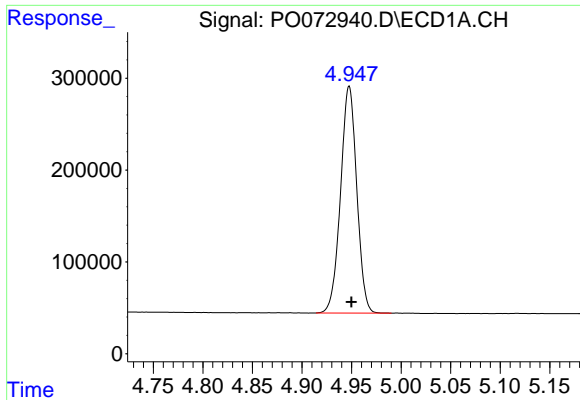
Data Path : Z:\pestpcbsrv\HPCHEM1\ECD_0\Data\PO103120\
 Data File : PO072940.D
 Signal(s) : Signal #1: ECD1A.CH Signal #2: ECD2B.CH
 Acq On : 30 Oct 2020 21:52
 Operator : DD\AJ
 Sample : AR1268CCC500
 Misc :
 ALS Vial : 7 Sample Multiplier: 1

Instrument :
 ECD_O
 ClientSampled :
 AR1268CCC500

Integration File signal 1: autoint1.e
 Integration File signal 2: autoint2.e
 Quant Time: Oct 31 07:36:55 2020
 Quant Method : Z:\pestpcbsrv\HPCHEM1\ECD_0\methods\PO102620.M
 Quant Title : GC EXTRACTABLES
 QLast Update : Sat Oct 31 07:06:26 2020
 Response via : Initial Calibration
 Integrator: ChemStation 6890 Scale Mode: Small noise peaks clipped

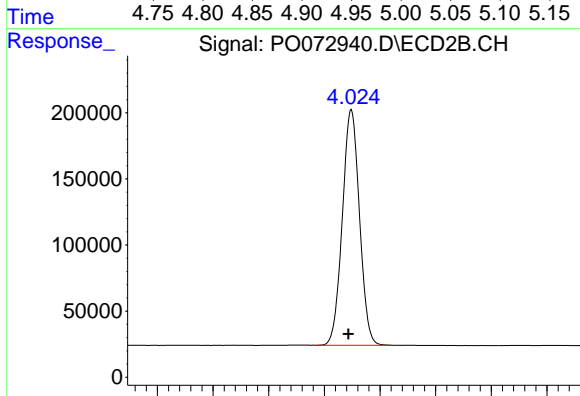
Volume Inj. : 2 µl
 Signal #1 Phase : ZB-MR1 Signal #2 Phase: ZB-MR2
 Signal #1 Info : 30Mx0.32mmx 0.50µ Signal #2 Info : 30M x 0.32mm x 0.25µm



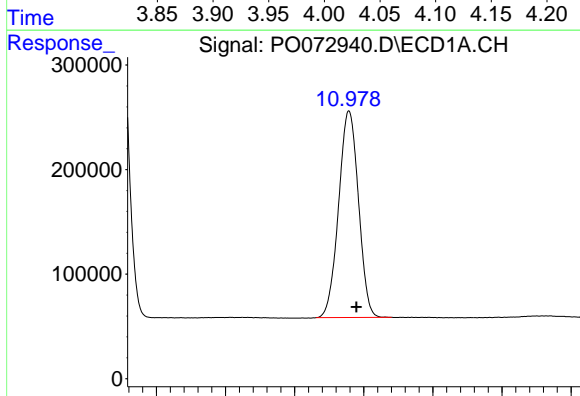


#1 Tetrachloro-m-xylene
 R.T.: 4.948 min
 Delta R.T.: -0.002 min
 Response: 2811635
 Conc: 60.98 ng/ml

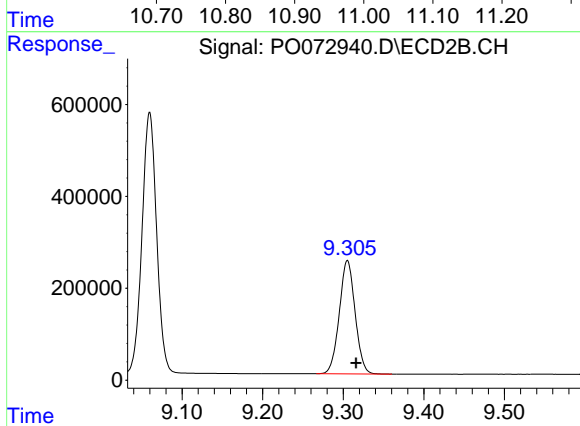
Instrument :
 ECD_O
 ClientSampleId :
 AR1268CCC500



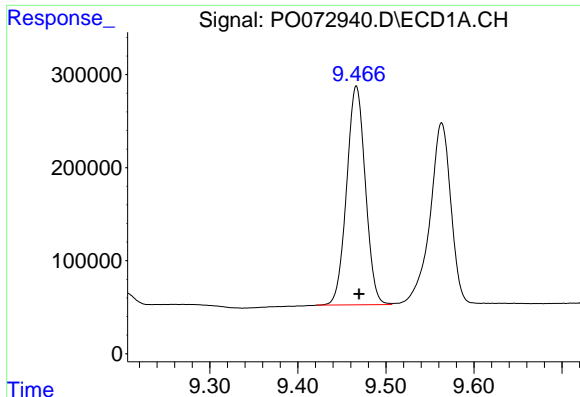
#1 Tetrachloro-m-xylene
 R.T.: 4.024 min
 Delta R.T.: 0.003 min
 Response: 1905626
 Conc: 54.37 ng/ml



#2 Decachlorobiphenyl
 R.T.: 10.978 min
 Delta R.T.: -0.011 min
 Response: 3936698
 Conc: 106.56 ng/ml



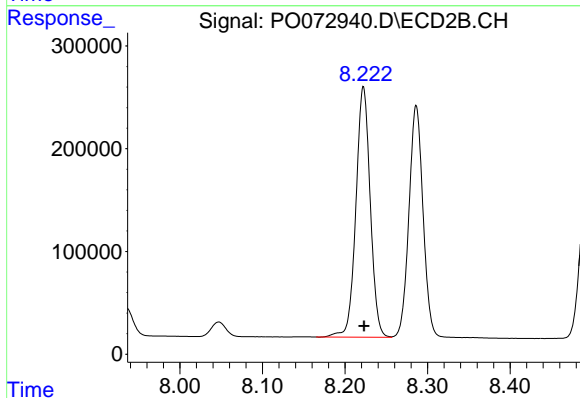
#2 Decachlorobiphenyl
 R.T.: 9.305 min
 Delta R.T.: -0.011 min
 Response: 3352759
 Conc: 100.54 ng/ml



#41 AR-1268-1

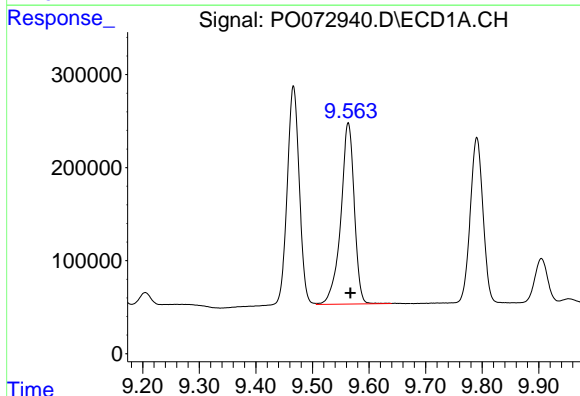
R.T.: 9.466 min
 Delta R.T.: -0.003 min
 Response: 3476183
 Conc: 472.10 ng/ml

Instrument :
 ECD_O
 ClientSampleId :
 AR1268CCC500



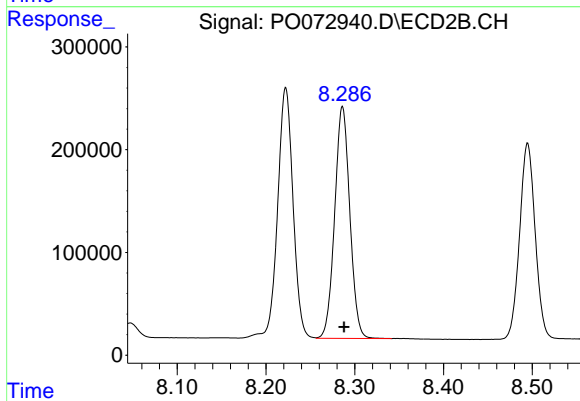
#41 AR-1268-1

R.T.: 8.222 min
 Delta R.T.: 0.000 min
 Response: 2943636
 Conc: 493.66 ng/ml



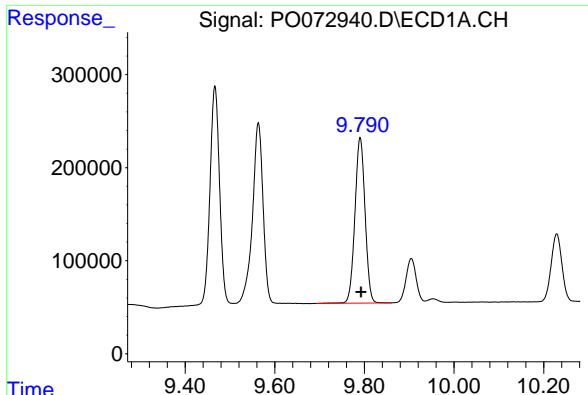
#42 AR-1268-2

R.T.: 9.563 min
 Delta R.T.: -0.004 min
 Response: 3224317
 Conc: 489.01 ng/ml



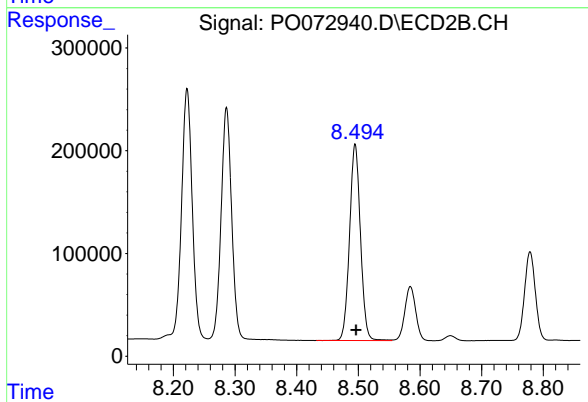
#42 AR-1268-2

R.T.: 8.286 min
 Delta R.T.: -0.002 min
 Response: 2674276
 Conc: 492.41 ng/ml

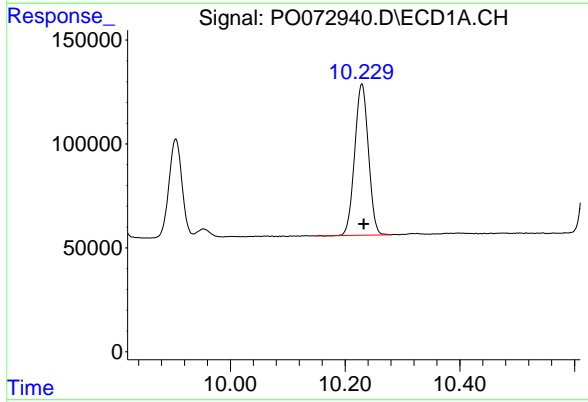


#43 AR-1268-3
 R.T.: 9.790 min
 Delta R.T.: -0.002 min
 Response: 2789493
 Conc: 500.74 ng/ml

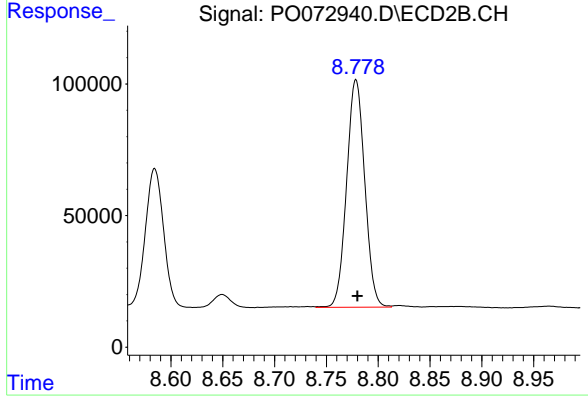
Instrument :
 ECD_O
 ClientSampled :
 AR1268CCC500



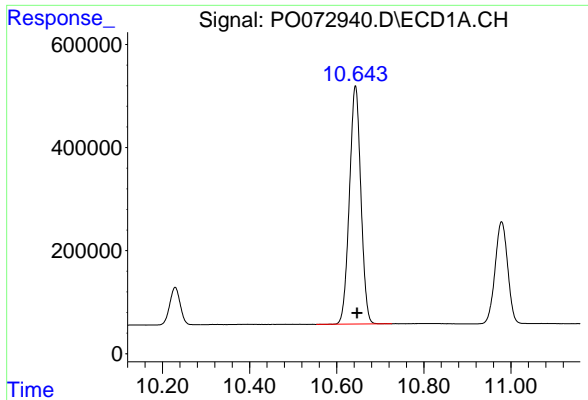
#43 AR-1268-3
 R.T.: 8.495 min
 Delta R.T.: -0.001 min
 Response: 2350674
 Conc: 482.23 ng/ml



#44 AR-1268-4
 R.T.: 10.229 min
 Delta R.T.: -0.003 min
 Response: 1204577
 Conc: 516.53 ng/ml



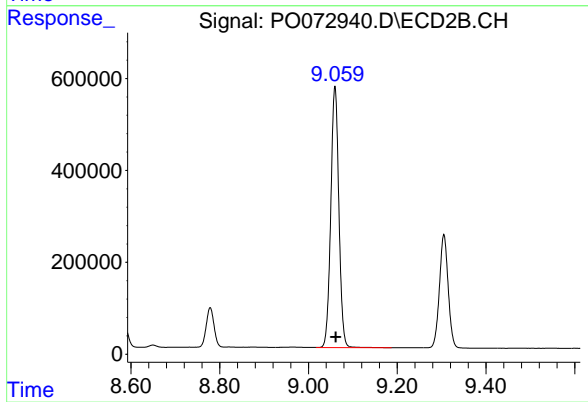
#44 AR-1268-4
 R.T.: 8.779 min
 Delta R.T.: -0.001 min
 Response: 1052156
 Conc: 481.87 ng/ml



#45 AR-1268-5

R.T.: 10.643 min
Delta R.T.: -0.003 min
Response: 8432263
Conc: 497.30 ng/ml

Instrument :
ECD_O
ClientSampleId :
AR1268CCC500



#45 AR-1268-5

R.T.: 9.060 min
Delta R.T.: -0.002 min
Response: 7179272
Conc: 498.51 ng/ml