

Data Path : Z:\pestpcbsrv\HPCHEM1\ECD_O\Data\PO103124\
 Data File : PO107570.D
 Signal(s) : Signal #1: ECD1A.ch Signal #2: ECD2B.ch
 Acq On : 31 Oct 2024 18:48
 Operator : YP/AJ
 Sample : P4620-18
 Misc :
 ALS Vial : 18 Sample Multiplier: 1

Instrument :
 ECD_O
 ClientSampleId :
 P001-CF14-01

Integration File signal 1: autoint1.e
 Integration File signal 2: autoint2.e
 Quant Time: Oct 31 23:12:21 2024
 Quant Method : Z:\pestpcbsrv\HPCHEM1\ECD_O\methods\PO101524.M
 Quant Title : GC EXTRACTABLES
 QLast Update : Mon Oct 28 11:34:55 2024
 Response via : Initial Calibration
 Integrator: ChemStation

Volume Inj. : 2 µl
 Signal #1 Phase : ZB-MR1 Signal #2 Phase: ZB-MR2
 Signal #1 Info : 30Mx0.32mmx 0.50µ Signal #2 Info : 30M x 0.32mm x 0.25µm

Compound	RT#1	RT#2	Resp#1	Resp#2	ng/ml	ng/ml
System Monitoring Compounds						
1) SA Tetrachlo...	4.371	3.644	211.6E6	76274362	23.214	23.699
2) SA Decachlor...	10.067	8.639	47923935	51249475	19.534	18.693
Target Compounds						
3) L1 AR-1016-1	5.498	4.730	3223185	1596636	11.946	15.461 #
4) L1 AR-1016-2	5.550	4.730	3315469	1596636	8.354	11.326 #
5) L1 AR-1016-3	5.596	4.923	8894678	226397	35.413	2.875 #
6) L1 AR-1016-4	5.701	4.966	2009789	691553	10.434	10.461
7) L1 AR-1016-5	6.001	5.180	237864	44854	1.302	0.546 #
8) L2 AR-1221-1	4.565	3.847	4162409	221127	37.325	6.101 #
9) L2 AR-1221-2	4.670	3.943	3328562	2181696	40.633	74.963 #
10) L2 AR-1221-3	4.713	4.016	35428	335743	0.148	3.805 #
11) L3 AR-1232-1	4.752	4.016	286628	335743	1.464	4.987 #
12) L3 AR-1232-2	5.274	4.730	3146953	1596636	30.545	25.261
13) L3 AR-1232-3	5.550	4.923	3315469	226397	18.522	6.567 #
14) L3 AR-1232-4	5.701	5.001	2009789	192824	22.290	6.128 #
15) L3 AR-1232-5	5.790	5.180	1517442	44854	23.025	1.356 #
16) L4 AR-1242-1	5.498	4.730	3223185	1596636	14.412	19.066 #
17) L4 AR-1242-2	5.550	4.730	3315469	1596636	10.248	13.807 #
18) L4 AR-1242-3	5.596	4.923	8894678	226397	42.563	3.569 #
19) L4 AR-1242-4	5.701	5.001	2009789	192824	12.561	3.011 #
20) L4 AR-1242-5	6.454	5.539	412379	214037	2.635	2.761
21) L5 AR-1248-1	5.498	4.730	3223185	1596636	18.537	25.167 #
22) L5 AR-1248-2	5.790	4.966	1517442	691553	5.997	7.559 #
23) L5 AR-1248-3	6.001	5.001	237864	192824	0.930	2.021 #
24) L5 AR-1248-4	6.396	5.180	173334	44854	0.672	0.400 #
25) L5 AR-1248-5	6.454	5.539	412379	214037	1.586	1.941
26) L6 AR-1254-1	6.352	5.539	112122	214037	0.417	1.299 #
27) L6 AR-1254-2	6.560	5.676	242676	42478	0.643	0.293 #
28) L6 AR-1254-3	6.941	6.067	2559473	186721	7.153	0.813 #
29) L6 AR-1254-4	7.237	6.302	3401565	105902	14.827	0.818 #
30) L6 AR-1254-5	7.668	6.718	5372947	1677153	25.875	8.779 #
31) L7 AR-1260-1	7.128	6.195	1324188	115071	5.121	0.742 #
32) L7 AR-1260-2	7.381	6.390	6188910	194287	23.512	1.103 #
33) L7 AR-1260-3	7.747	6.547	2747352	38755	15.285	0.231 #
34) L7 AR-1260-4	7.950	7.022	3322061	554493	18.929	3.833 #
35) L7 AR-1260-5	8.284	7.252	675316	2361440	2.375	7.168 #
36) L8 AR-1262-1	7.747	6.718f	2747352	1677153	11.189	7.879 #
37) L8 AR-1262-2	8.284	7.252	675316	2361440	2.183	6.499 #
38) L8 AR-1262-3	8.605	7.529	414415	383709	1.981	2.793 #
39) L8 AR-1262-4	8.682	7.602	734264	666341	4.503	2.519 #
40) L8 AR-1262-5	9.310	8.100	50672	96932	0.493	0.859 #
41) L9 AR-1268-1	8.577	7.529	49048	383709	0.135	0.948 #

Data Path : Z:\pestpcbsrv\HPCHEM1\ECD_0\Data\PO103124\
 Data File : PO107570.D
 Signal(s) : Signal #1: ECD1A.ch Signal #2: ECD2B.ch
 Acq On : 31 Oct 2024 18:48
 Operator : YP/AJ
 Sample : P4620-18
 Misc :
 ALS Vial : 18 Sample Multiplier: 1

Instrument :
 ECD_0
 ClientSampleId :
 P001-CF14-01

Integration File signal 1: autoint1.e
 Integration File signal 2: autoint2.e
 Quant Time: Oct 31 23:12:21 2024
 Quant Method : Z:\pestpcbsrv\HPCHEM1\ECD_0\methods\PO101524.M
 Quant Title : GC EXTRACTABLES
 QLast Update : Mon Oct 28 11:34:55 2024
 Response via : Initial Calibration
 Integrator: ChemStation

Volume Inj. : 2 µl
 Signal #1 Phase : ZB-MR1 Signal #2 Phase: ZB-MR2
 Signal #1 Info : 30Mx0.32mmx 0.50µ Signal #2 Info : 30M x 0.32mm x 0.25µm

	Compound	RT#1	RT#2	Resp#1	Resp#2	ng/ml	ng/ml
42)	L9 AR-1268-2	8.682	7.602	734264	666341	2.277	1.785
43)	L9 AR-1268-3	8.911	7.808	122934	64346	0.440	0.193 #
44)	L9 AR-1268-4	9.310	8.100	50672	96932	0.456	0.773 #
45)	L9 AR-1268-5	9.736	8.387	581807	273744	0.699	0.277 #

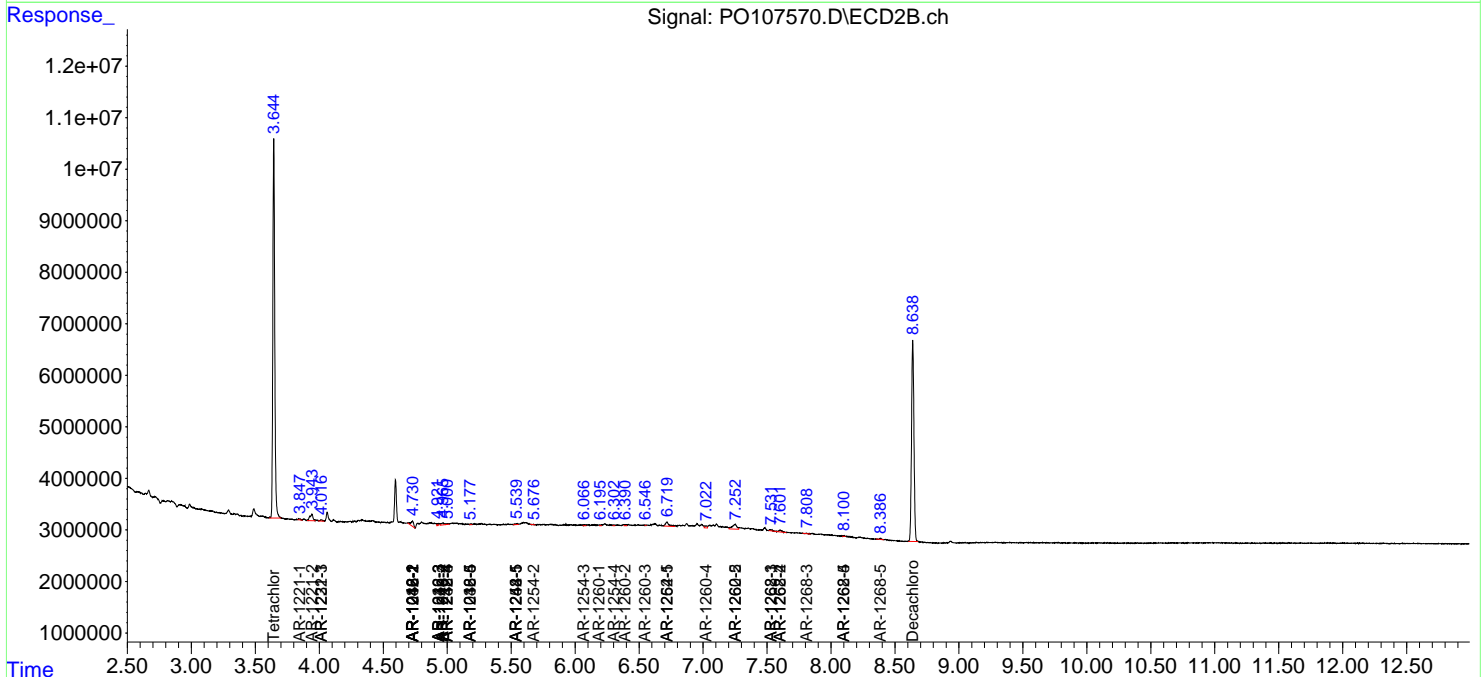
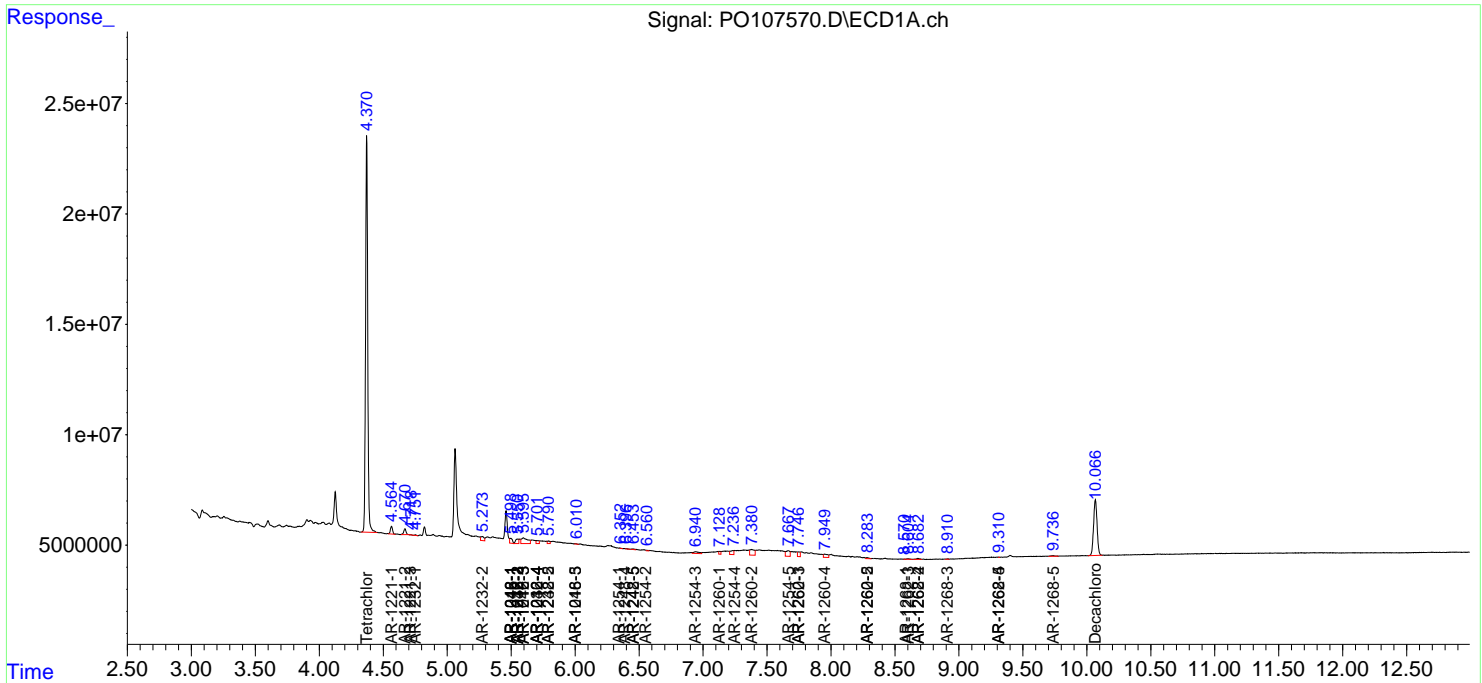
(f)=RT Delta > 1/2 Window (#)=Amounts differ by > 25% (m)=manual int.

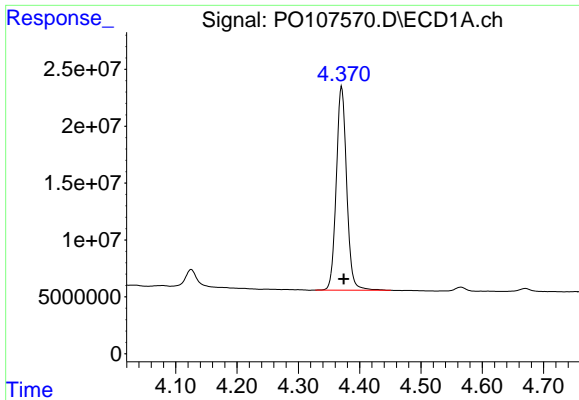
Data Path : Z:\pestpcbsrv\HPCHEM1\ECD_O\Data\PO103124\
 Data File : PO107570.D
 Signal(s) : Signal #1: ECD1A.ch Signal #2: ECD2B.ch
 Acq On : 31 Oct 2024 18:48
 Operator : YP/AJ
 Sample : P4620-18
 Misc :
 ALS Vial : 18 Sample Multiplier: 1

Instrument :
 ECD_O
ClientSampleId :
 P001-CF14-01

Integration File signal 1: autoint1.e
 Integration File signal 2: autoint2.e
 Quant Time: Oct 31 23:12:21 2024
 Quant Method : Z:\pestpcbsrv\HPCHEM1\ECD_O\methods\PO101524.M
 Quant Title : GC EXTRACTABLES
 QLast Update : Mon Oct 28 11:34:55 2024
 Response via : Initial Calibration
 Integrator: ChemStation

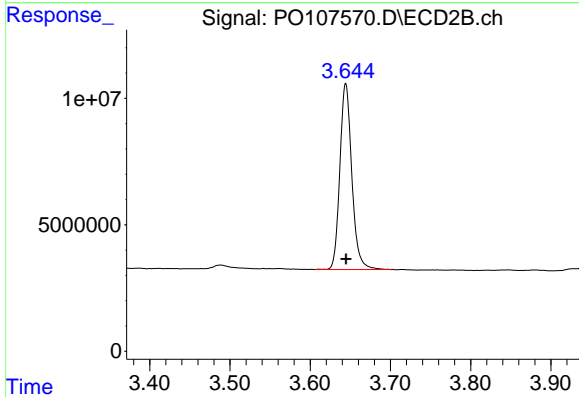
Volume Inj. : 2 µl
 Signal #1 Phase : ZB-MR1 Signal #2 Phase: ZB-MR2
 Signal #1 Info : 30Mx0.32mmx 0.50µ Signal #2 Info : 30M x 0.32mm x 0.25µm



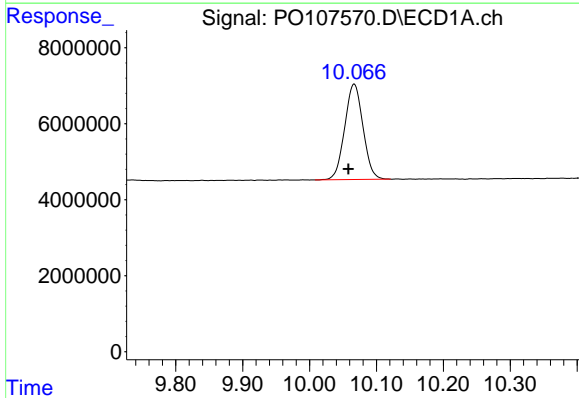


#1 Tetrachloro-m-xylene
 R.T.: 4.371 min
 Delta R.T.: -0.003 min
 Response: 211574114
 Conc: 23.21 ng/ml

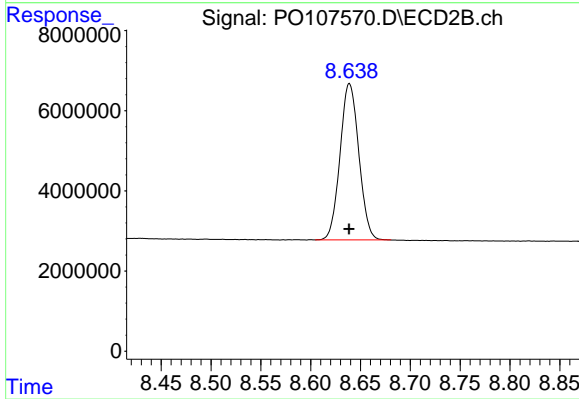
Instrument :
 ECD_O
 ClientSampleId :
 P001-CF14-01



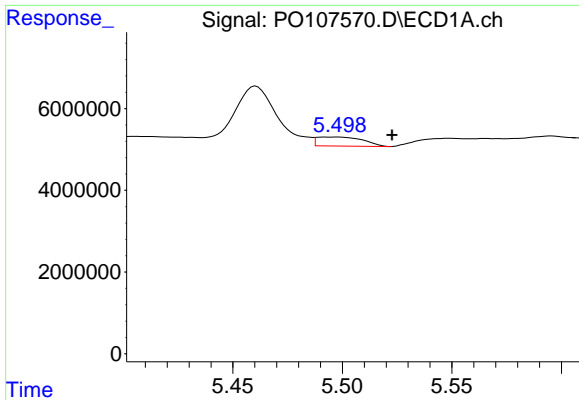
#1 Tetrachloro-m-xylene
 R.T.: 3.644 min
 Delta R.T.: 0.000 min
 Response: 76274362
 Conc: 23.70 ng/ml



#2 Decachlorobiphenyl
 R.T.: 10.067 min
 Delta R.T.: 0.009 min
 Response: 47923935
 Conc: 19.53 ng/ml



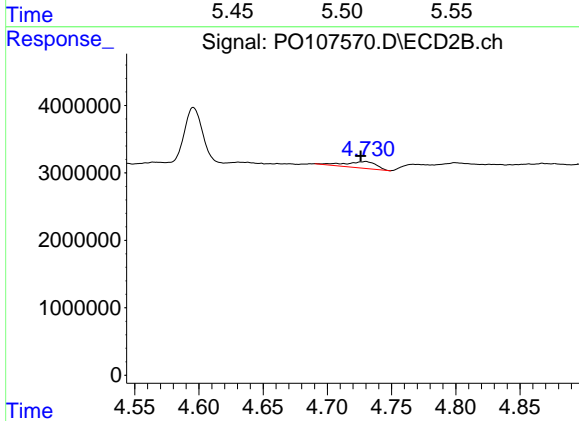
#2 Decachlorobiphenyl
 R.T.: 8.639 min
 Delta R.T.: 0.000 min
 Response: 51249475
 Conc: 18.69 ng/ml



#3 AR-1016-1

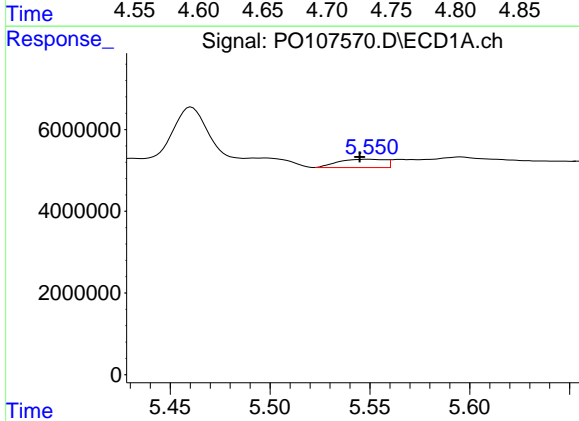
R.T.: 5.498 min
 Delta R.T.: -0.025 min
 Response: 3223185
 Conc: 11.95 ng/ml

Instrument :
 ECD_O
 ClientSampleId :
 P001-CF14-01



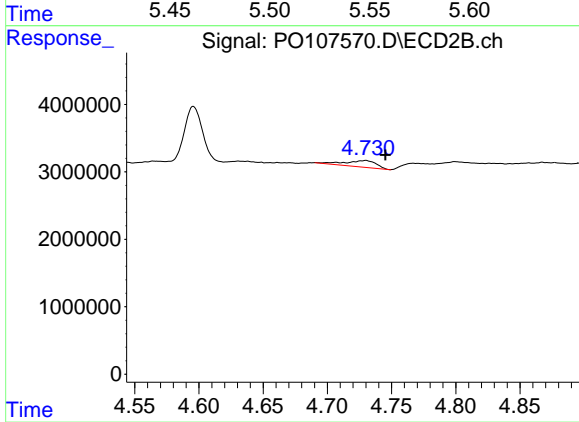
#3 AR-1016-1

R.T.: 4.730 min
 Delta R.T.: 0.004 min
 Response: 1596636
 Conc: 15.46 ng/ml



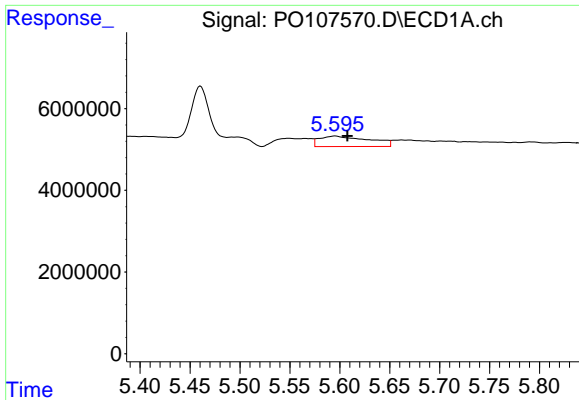
#4 AR-1016-2

R.T.: 5.550 min
 Delta R.T.: 0.005 min
 Response: 3315469
 Conc: 8.35 ng/ml



#4 AR-1016-2

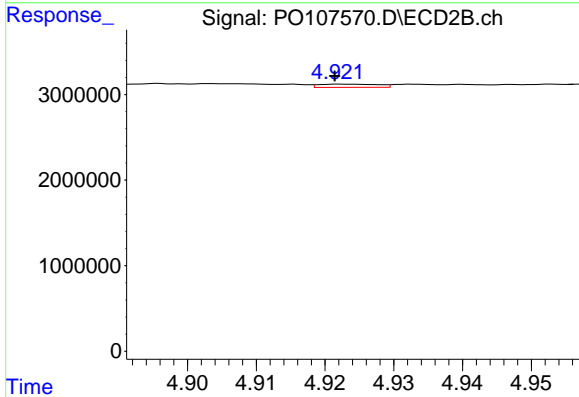
R.T.: 4.730 min
 Delta R.T.: -0.015 min
 Response: 1596636
 Conc: 11.33 ng/ml



#5 AR-1016-3

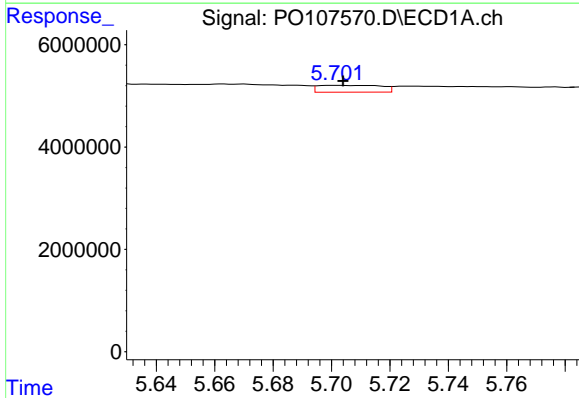
R.T.: 5.596 min
 Delta R.T.: -0.012 min
 Response: 8894678
 Conc: 35.41 ng/ml

Instrument :
 ECD_O
 ClientSampleId :
 P001-CF14-01



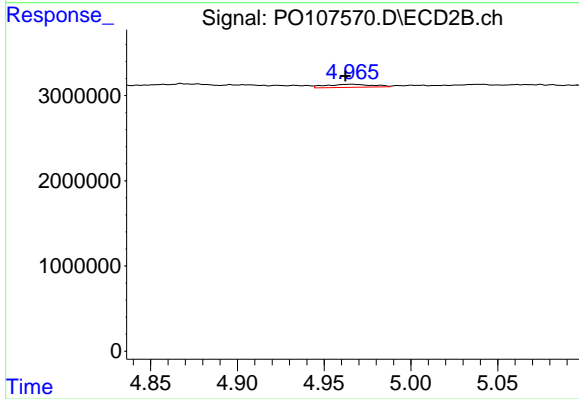
#5 AR-1016-3

R.T.: 4.923 min
 Delta R.T.: 0.001 min
 Response: 226397
 Conc: 2.88 ng/ml



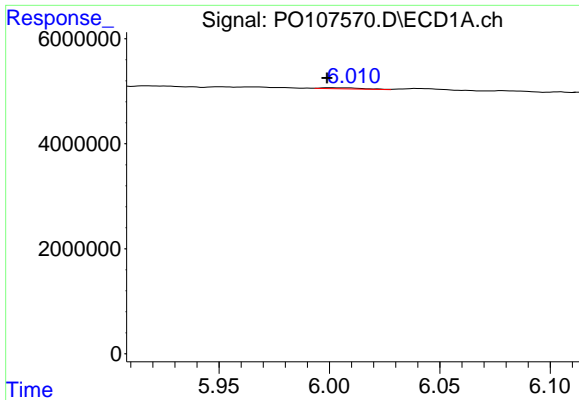
#6 AR-1016-4

R.T.: 5.701 min
 Delta R.T.: -0.003 min
 Response: 2009789
 Conc: 10.43 ng/ml



#6 AR-1016-4

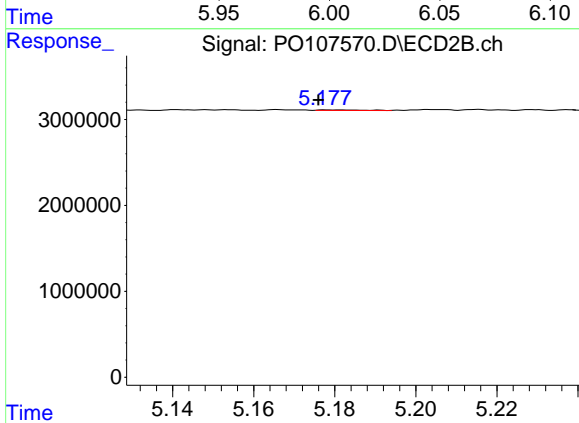
R.T.: 4.966 min
 Delta R.T.: 0.004 min
 Response: 691553
 Conc: 10.46 ng/ml



#7 AR-1016-5

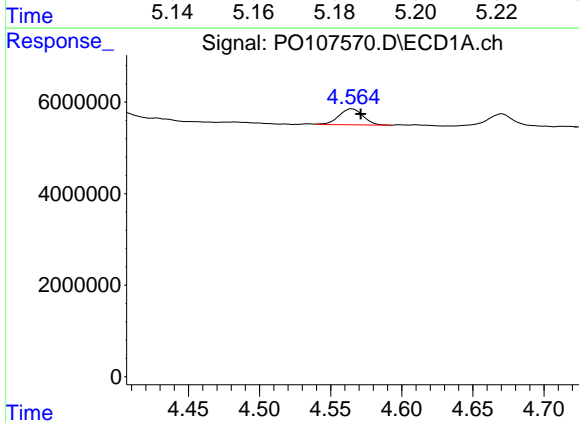
R.T.: 6.001 min
 Delta R.T.: 0.002 min
 Response: 237864
 Conc: 1.30 ng/ml

Instrument :
 ECD_O
 ClientSampleId :
 P001-CF14-01



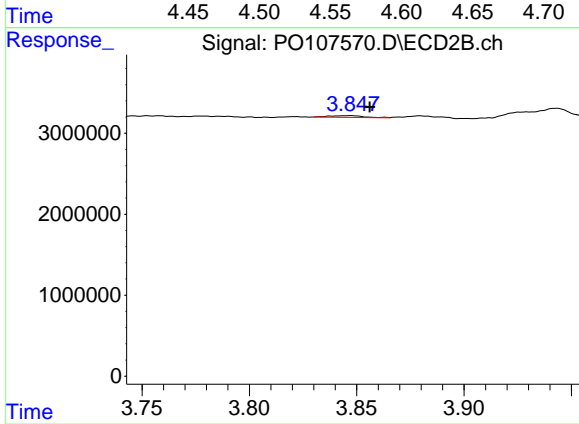
#7 AR-1016-5

R.T.: 5.180 min
 Delta R.T.: 0.004 min
 Response: 44854
 Conc: 0.55 ng/ml



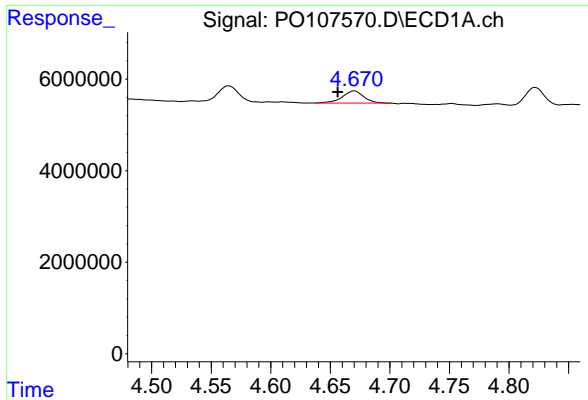
#8 AR-1221-1

R.T.: 4.565 min
 Delta R.T.: -0.006 min
 Response: 4162409
 Conc: 37.32 ng/ml



#8 AR-1221-1

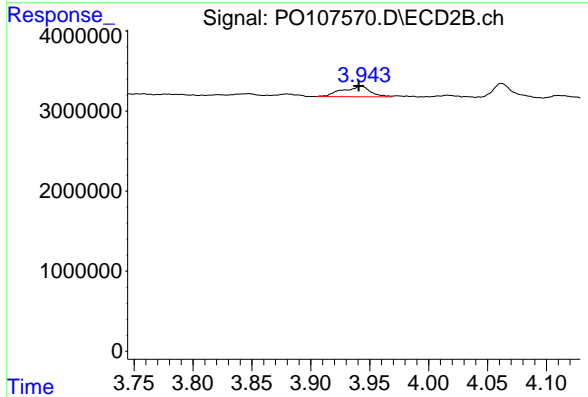
R.T.: 3.847 min
 Delta R.T.: -0.009 min
 Response: 221127
 Conc: 6.10 ng/ml



#9 AR-1221-2

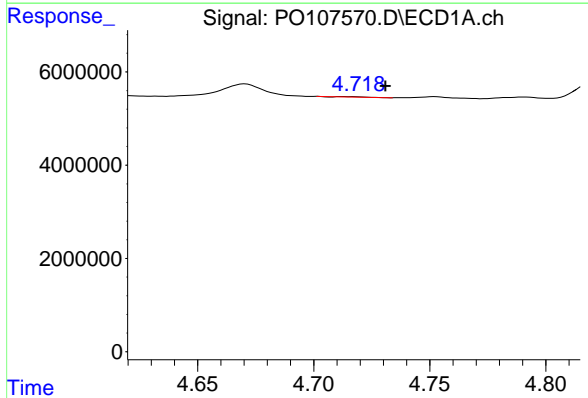
R.T.: 4.670 min
 Delta R.T.: 0.014 min
 Response: 3328562
 Conc: 40.63 ng/ml

Instrument :
 ECD_O
 ClientSampleId :
 P001-CF14-01



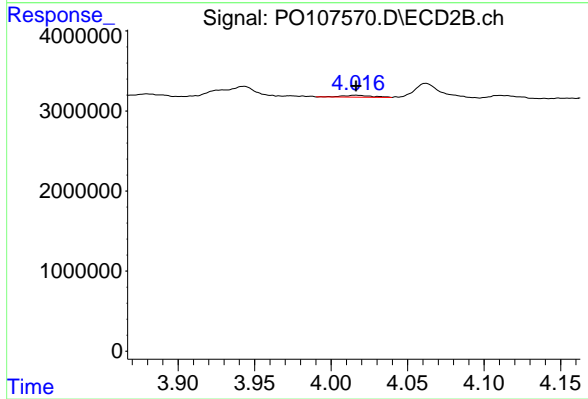
#9 AR-1221-2

R.T.: 3.943 min
 Delta R.T.: 0.002 min
 Response: 2181696
 Conc: 74.96 ng/ml



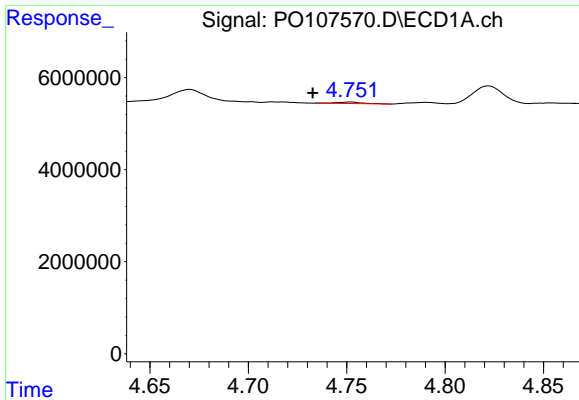
#10 AR-1221-3

R.T.: 4.713 min
 Delta R.T.: -0.018 min
 Response: 35428
 Conc: 0.15 ng/ml



#10 AR-1221-3

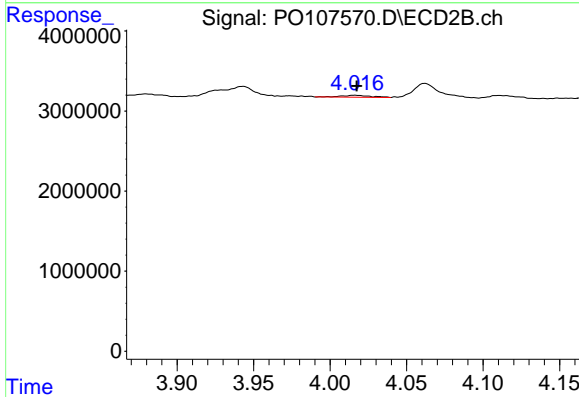
R.T.: 4.016 min
 Delta R.T.: 0.000 min
 Response: 335743
 Conc: 3.80 ng/ml



#11 AR-1232-1

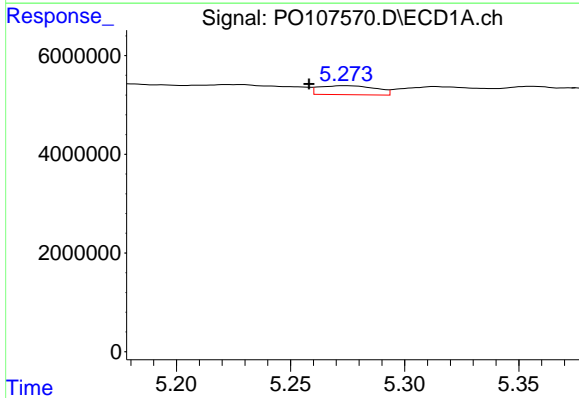
R.T.: 4.752 min
 Delta R.T.: 0.019 min
 Response: 286628
 Conc: 1.46 ng/ml

Instrument :
 ECD_O
 ClientSampleId :
 P001-CF14-01



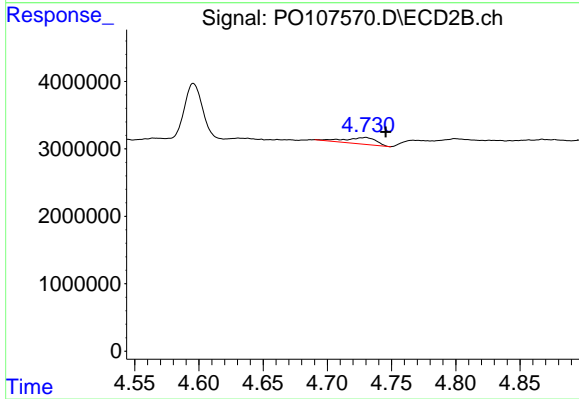
#11 AR-1232-1

R.T.: 4.016 min
 Delta R.T.: -0.001 min
 Response: 335743
 Conc: 4.99 ng/ml



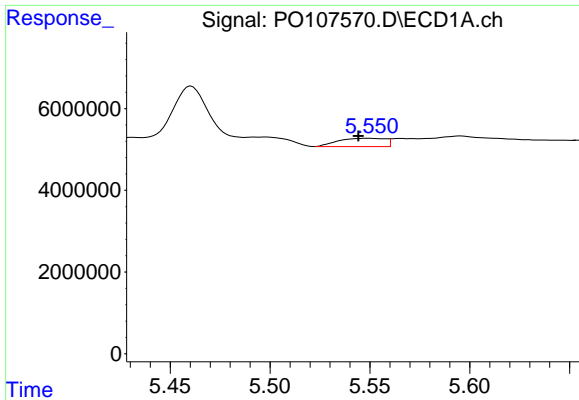
#12 AR-1232-2

R.T.: 5.274 min
 Delta R.T.: 0.015 min
 Response: 3146953
 Conc: 30.55 ng/ml



#12 AR-1232-2

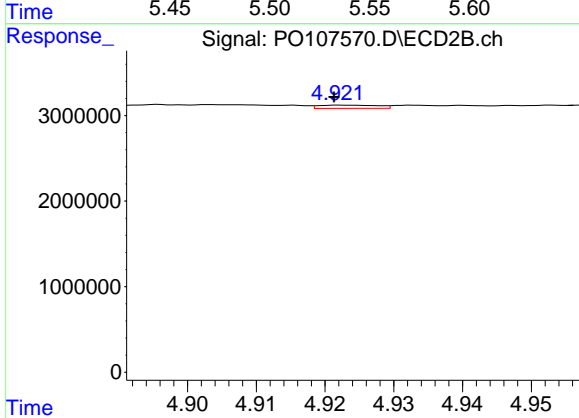
R.T.: 4.730 min
 Delta R.T.: -0.015 min
 Response: 1596636
 Conc: 25.26 ng/ml



#13 AR-1232-3

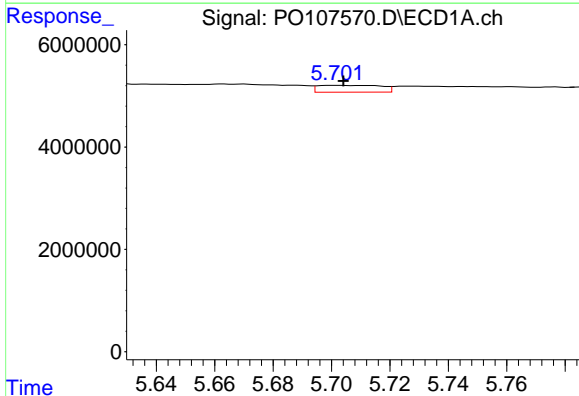
R.T.: 5.550 min
 Delta R.T.: 0.005 min
 Response: 3315469
 Conc: 18.52 ng/ml

Instrument :
 ECD_O
 ClientSampleId :
 P001-CF14-01



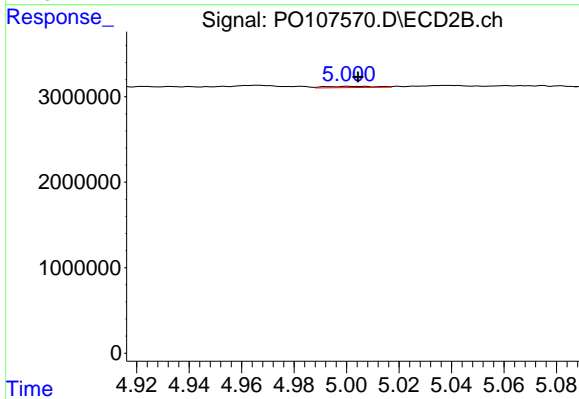
#13 AR-1232-3

R.T.: 4.923 min
 Delta R.T.: 0.002 min
 Response: 226397
 Conc: 6.57 ng/ml



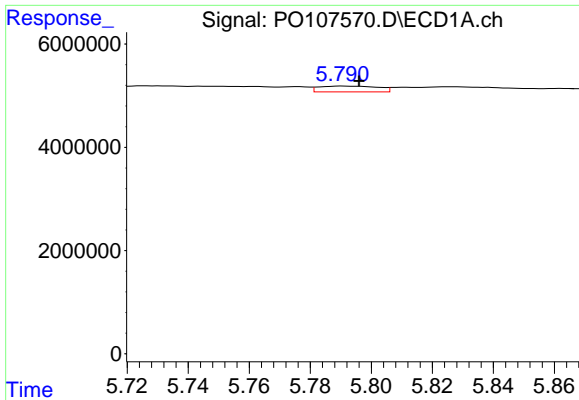
#14 AR-1232-4

R.T.: 5.701 min
 Delta R.T.: -0.003 min
 Response: 2009789
 Conc: 22.29 ng/ml



#14 AR-1232-4

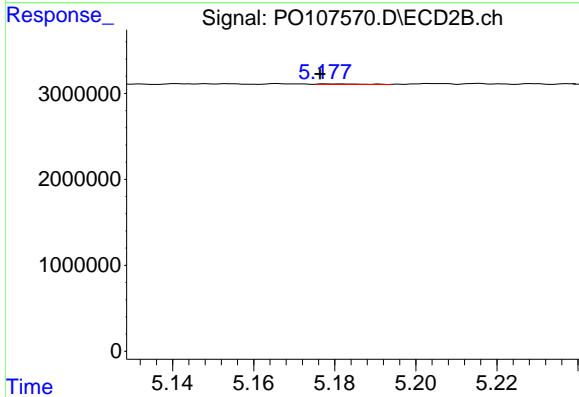
R.T.: 5.001 min
 Delta R.T.: -0.004 min
 Response: 192824
 Conc: 6.13 ng/ml



#15 AR-1232-5

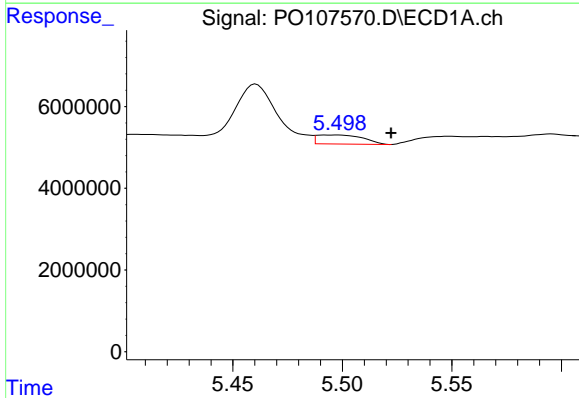
R.T.: 5.790 min
 Delta R.T.: -0.005 min
 Response: 1517442
 Conc: 23.03 ng/ml

Instrument :
 ECD_O
 ClientSampleId :
 P001-CF14-01



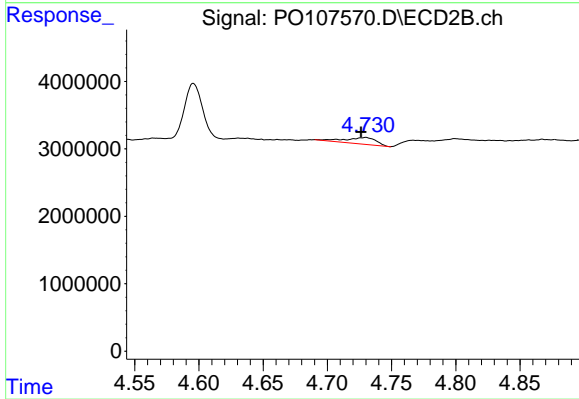
#15 AR-1232-5

R.T.: 5.180 min
 Delta R.T.: 0.004 min
 Response: 44854
 Conc: 1.36 ng/ml



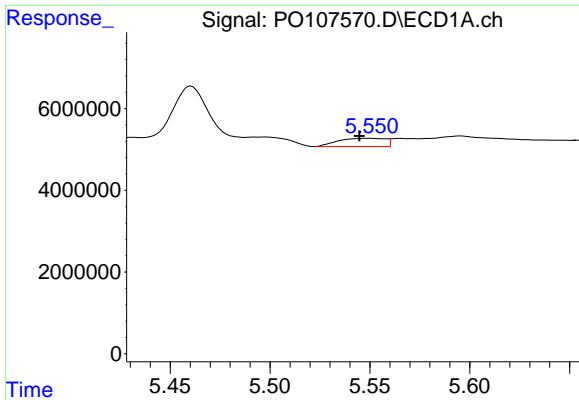
#16 AR-1242-1

R.T.: 5.498 min
 Delta R.T.: -0.024 min
 Response: 3223185
 Conc: 14.41 ng/ml



#16 AR-1242-1

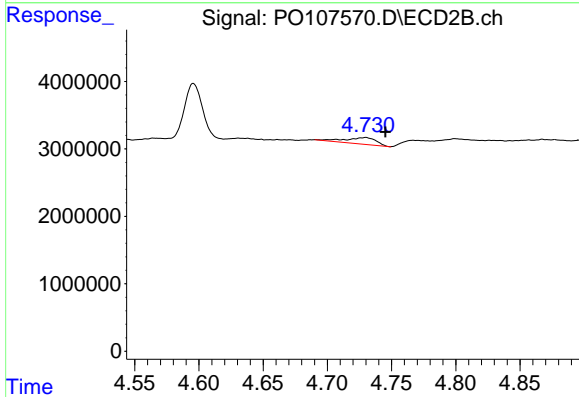
R.T.: 4.730 min
 Delta R.T.: 0.004 min
 Response: 1596636
 Conc: 19.07 ng/ml



#17 AR-1242-2

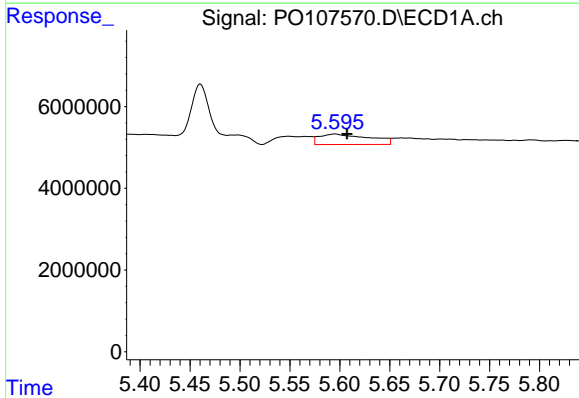
R.T.: 5.550 min
 Delta R.T.: 0.005 min
 Response: 3315469
 Conc: 10.25 ng/ml

Instrument :
 ECD_O
 ClientSampleId :
 P001-CF14-01



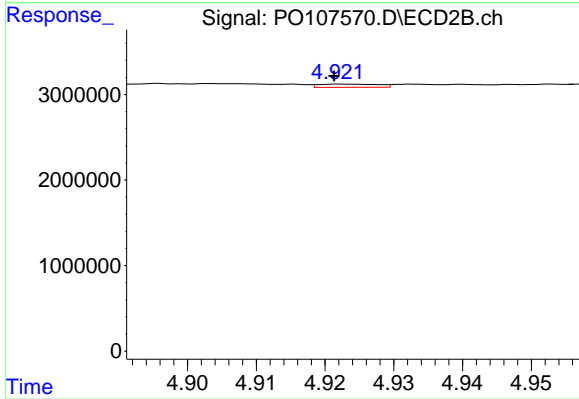
#17 AR-1242-2

R.T.: 4.730 min
 Delta R.T.: -0.015 min
 Response: 1596636
 Conc: 13.81 ng/ml



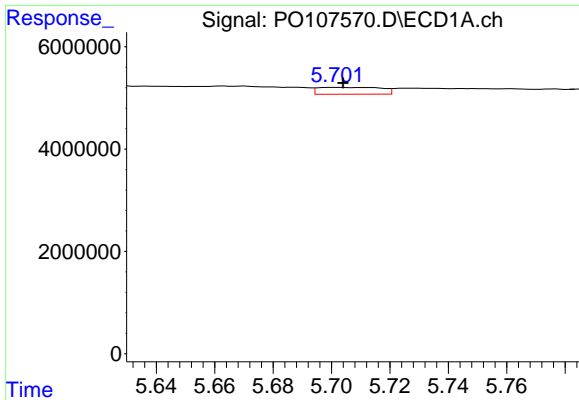
#18 AR-1242-3

R.T.: 5.596 min
 Delta R.T.: -0.012 min
 Response: 8894678
 Conc: 42.56 ng/ml



#18 AR-1242-3

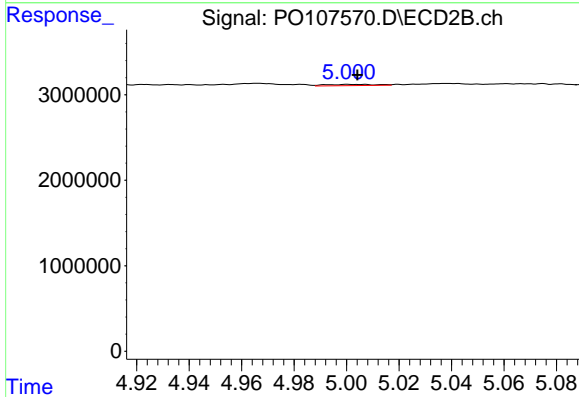
R.T.: 4.923 min
 Delta R.T.: 0.002 min
 Response: 226397
 Conc: 3.57 ng/ml



#19 AR-1242-4

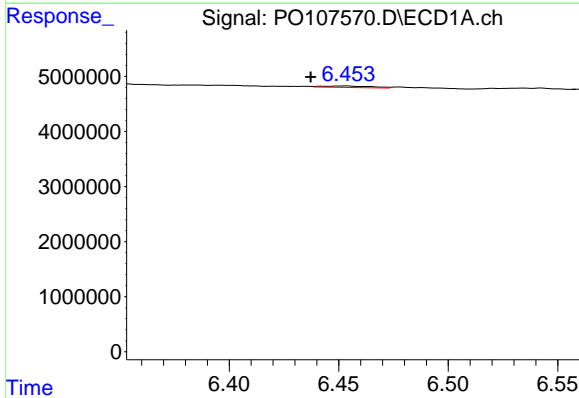
R.T.: 5.701 min
 Delta R.T.: -0.003 min
 Response: 2009789
 Conc: 12.56 ng/ml

Instrument :
 ECD_O
 ClientSampleId :
 P001-CF14-01



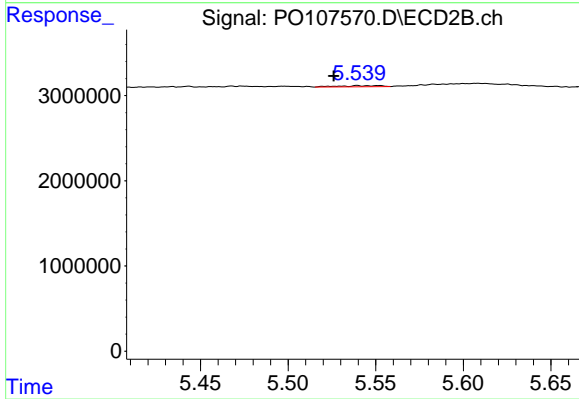
#19 AR-1242-4

R.T.: 5.001 min
 Delta R.T.: -0.004 min
 Response: 192824
 Conc: 3.01 ng/ml



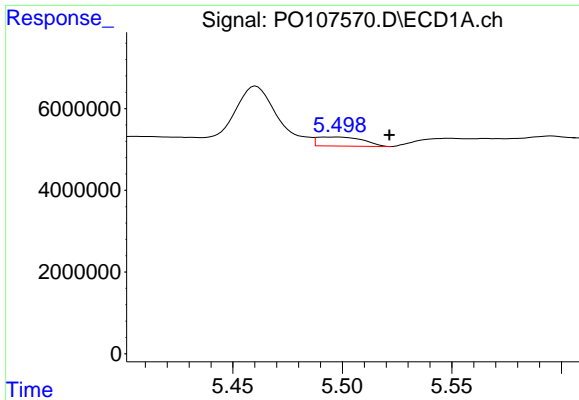
#20 AR-1242-5

R.T.: 6.454 min
 Delta R.T.: 0.016 min
 Response: 412379
 Conc: 2.64 ng/ml



#20 AR-1242-5

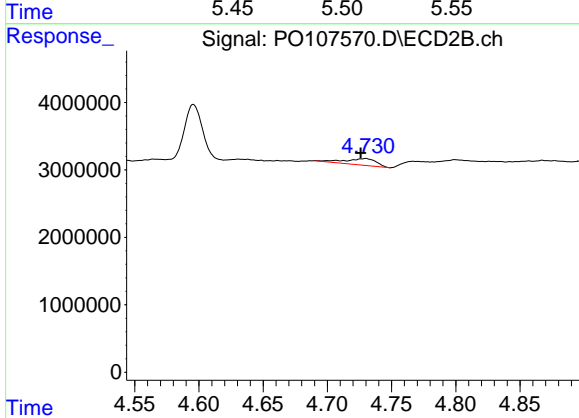
R.T.: 5.539 min
 Delta R.T.: 0.013 min
 Response: 214037
 Conc: 2.76 ng/ml



#21 AR-1248-1

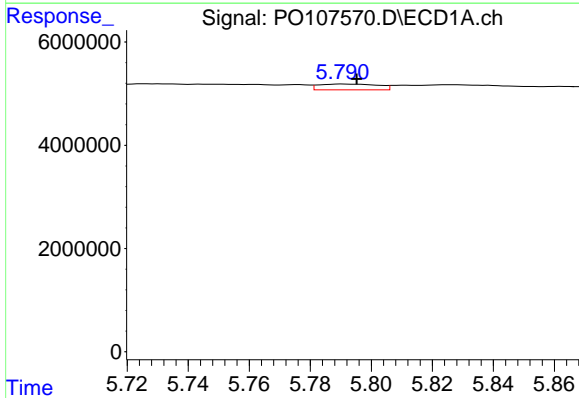
R.T.: 5.498 min
 Delta R.T.: -0.024 min
 Response: 3223185
 Conc: 18.54 ng/ml

Instrument :
 ECD_O
 ClientSampleId :
 P001-CF14-01



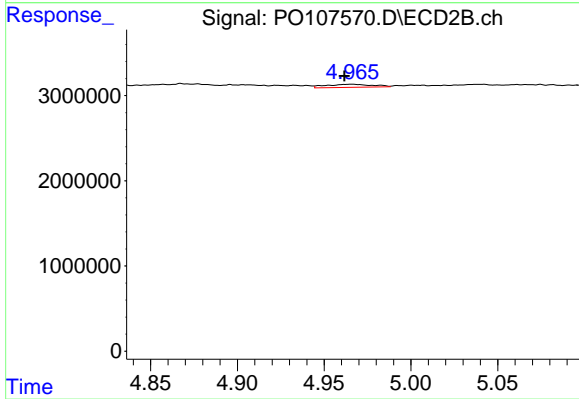
#21 AR-1248-1

R.T.: 4.730 min
 Delta R.T.: 0.004 min
 Response: 1596636
 Conc: 25.17 ng/ml



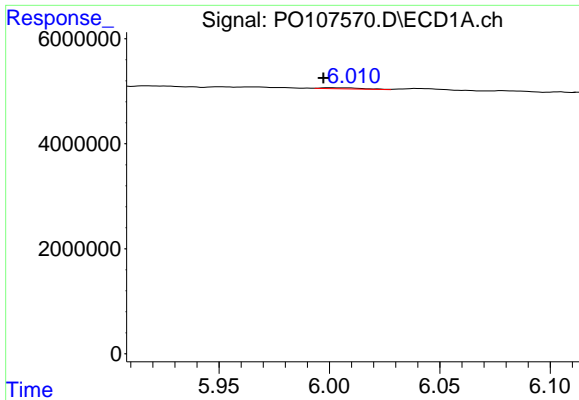
#22 AR-1248-2

R.T.: 5.790 min
 Delta R.T.: -0.005 min
 Response: 1517442
 Conc: 6.00 ng/ml



#22 AR-1248-2

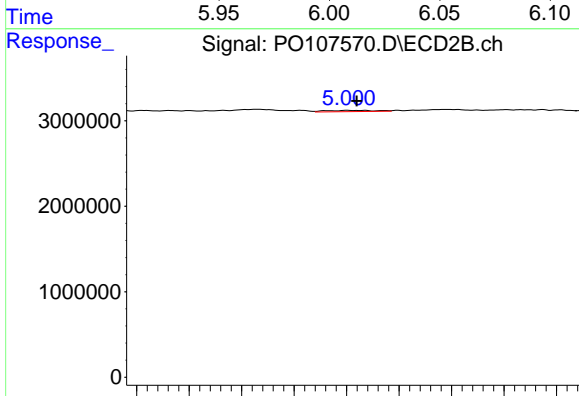
R.T.: 4.966 min
 Delta R.T.: 0.004 min
 Response: 691553
 Conc: 7.56 ng/ml



#23 AR-1248-3

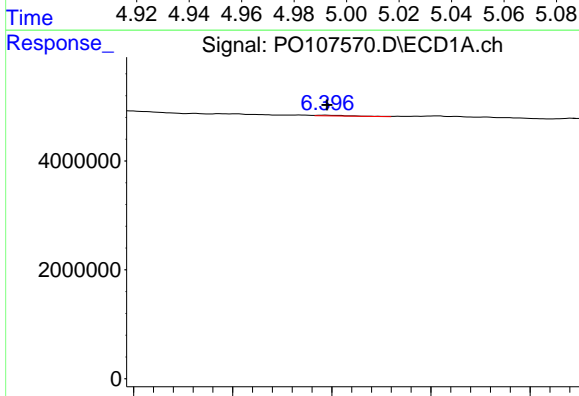
R.T.: 6.001 min
 Delta R.T.: 0.004 min
 Response: 237864
 Conc: 0.93 ng/ml

Instrument :
 ECD_O
 ClientSampleId :
 P001-CF14-01



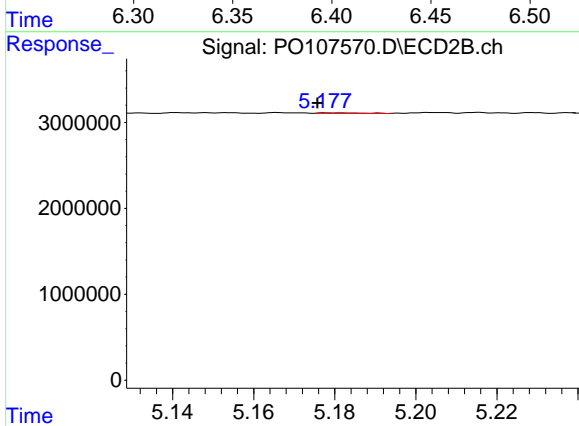
#23 AR-1248-3

R.T.: 5.001 min
 Delta R.T.: -0.003 min
 Response: 192824
 Conc: 2.02 ng/ml



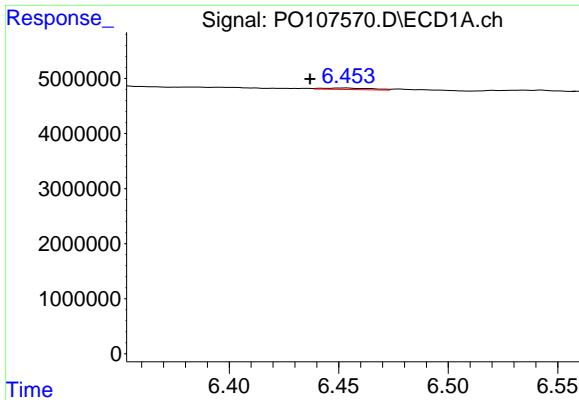
#24 AR-1248-4

R.T.: 6.396 min
 Delta R.T.: -0.001 min
 Response: 173334
 Conc: 0.67 ng/ml



#24 AR-1248-4

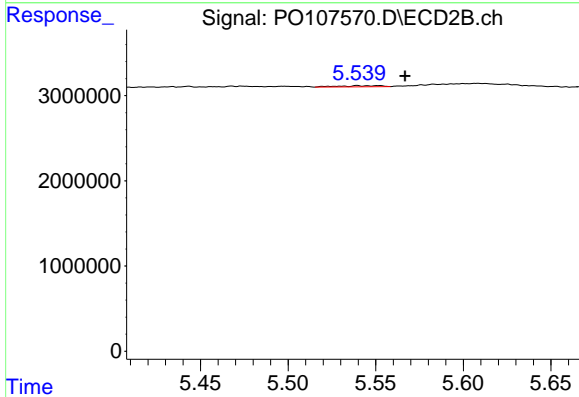
R.T.: 5.180 min
 Delta R.T.: 0.004 min
 Response: 44854
 Conc: 0.40 ng/ml



#25 AR-1248-5

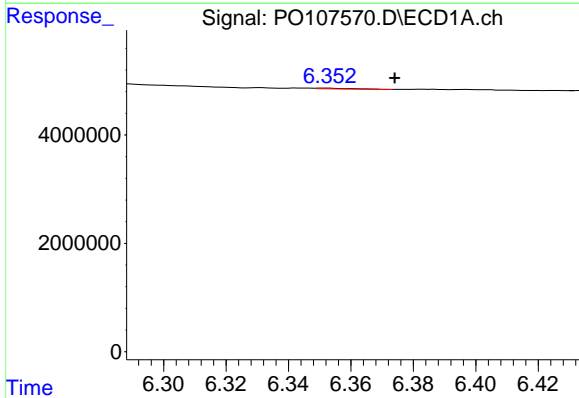
R.T.: 6.454 min
 Delta R.T.: 0.017 min
 Response: 412379
 Conc: 1.59 ng/ml

Instrument :
 ECD_O
 ClientSampleId :
 P001-CF14-01



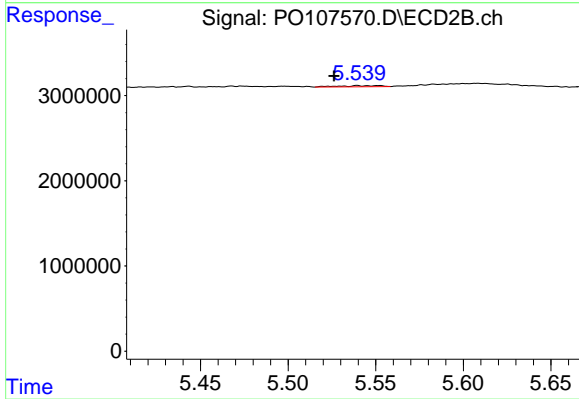
#25 AR-1248-5

R.T.: 5.539 min
 Delta R.T.: -0.027 min
 Response: 214037
 Conc: 1.94 ng/ml



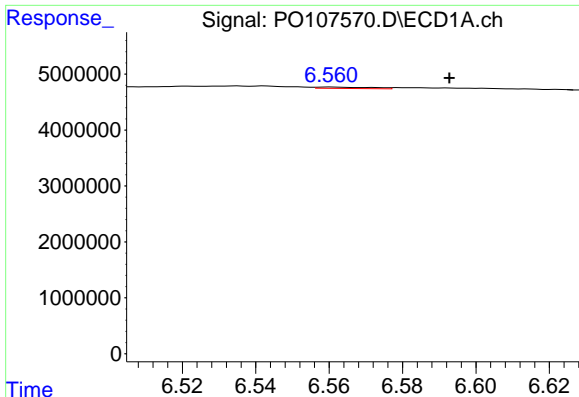
#26 AR-1254-1

R.T.: 6.352 min
 Delta R.T.: -0.022 min
 Response: 112122
 Conc: 0.42 ng/ml



#26 AR-1254-1

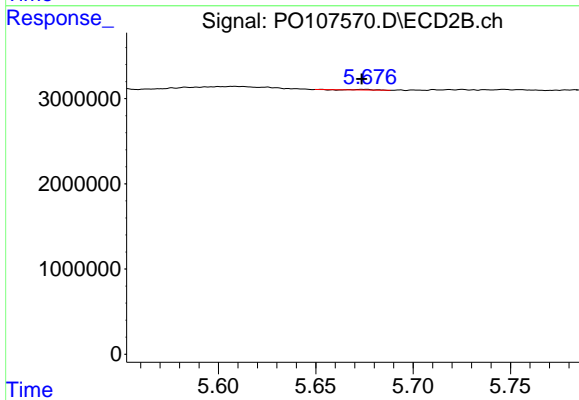
R.T.: 5.539 min
 Delta R.T.: 0.013 min
 Response: 214037
 Conc: 1.30 ng/ml



#27 AR-1254-2

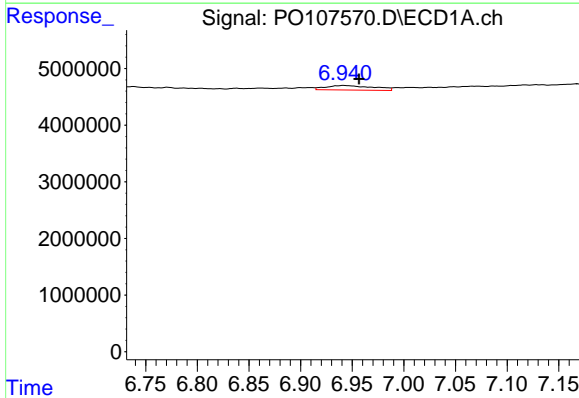
R.T.: 6.560 min
 Delta R.T.: -0.033 min
 Response: 242676
 Conc: 0.64 ng/ml

Instrument :
 ECD_O
 ClientSampleId :
 P001-CF14-01



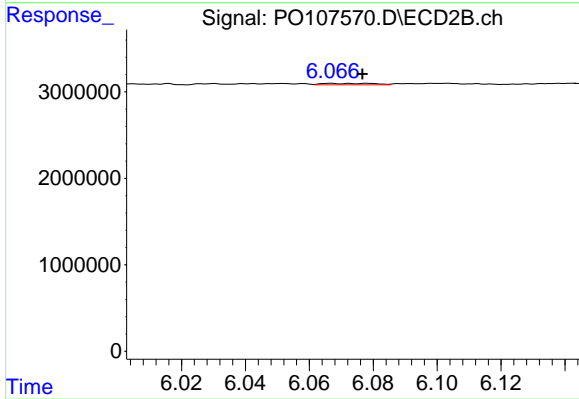
#27 AR-1254-2

R.T.: 5.676 min
 Delta R.T.: 0.002 min
 Response: 42478
 Conc: 0.29 ng/ml



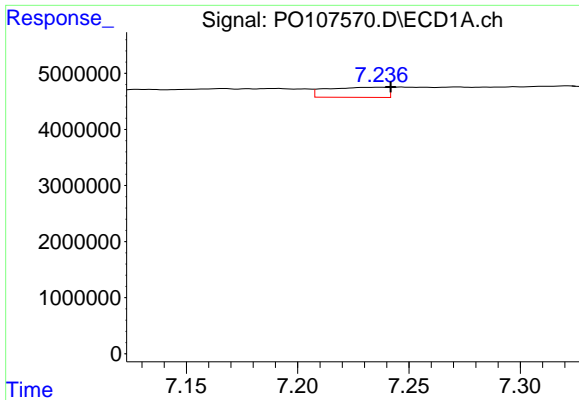
#28 AR-1254-3

R.T.: 6.941 min
 Delta R.T.: -0.015 min
 Response: 2559473
 Conc: 7.15 ng/ml



#28 AR-1254-3

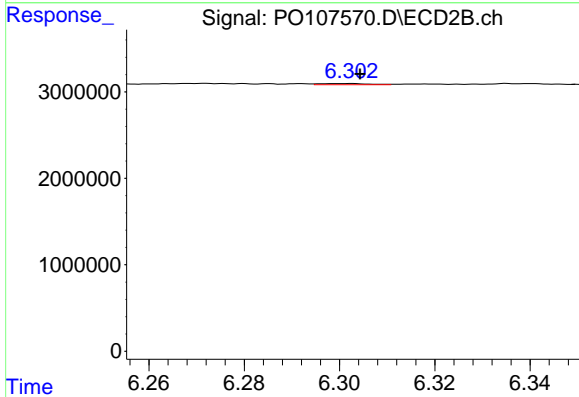
R.T.: 6.067 min
 Delta R.T.: -0.010 min
 Response: 186721
 Conc: 0.81 ng/ml



#29 AR-1254-4

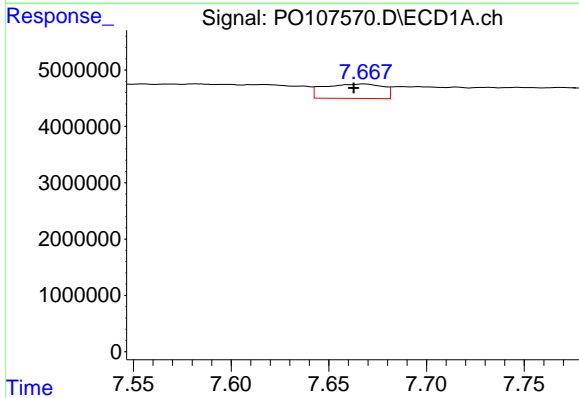
R.T.: 7.237 min
 Delta R.T.: -0.005 min
 Response: 3401565
 Conc: 14.83 ng/ml

Instrument :
 ECD_O
 ClientSampleId :
 P001-CF14-01



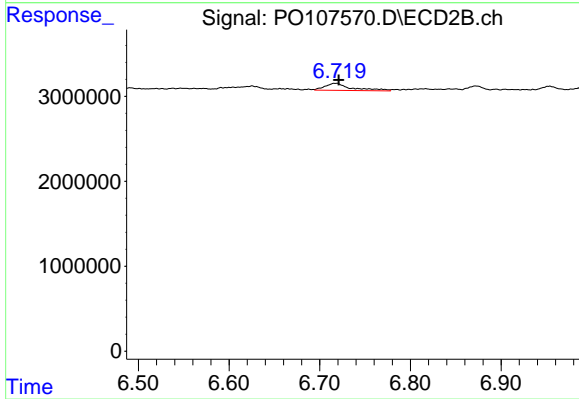
#29 AR-1254-4

R.T.: 6.302 min
 Delta R.T.: -0.002 min
 Response: 105902
 Conc: 0.82 ng/ml



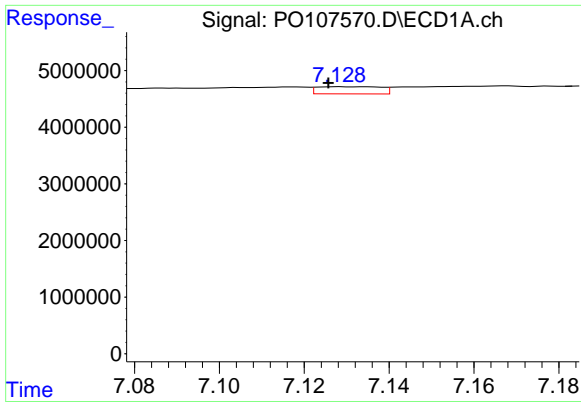
#30 AR-1254-5

R.T.: 7.668 min
 Delta R.T.: 0.006 min
 Response: 5372947
 Conc: 25.88 ng/ml



#30 AR-1254-5

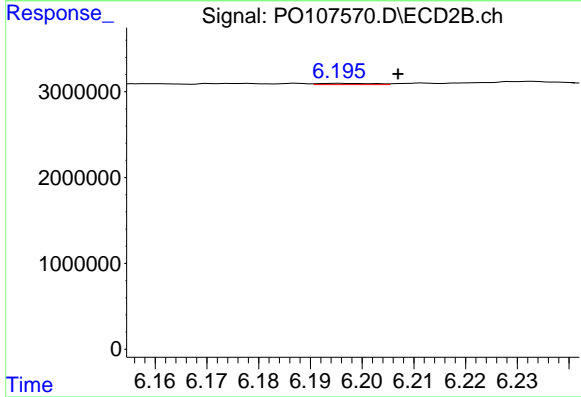
R.T.: 6.718 min
 Delta R.T.: -0.003 min
 Response: 1677153
 Conc: 8.78 ng/ml



#31 AR-1260-1

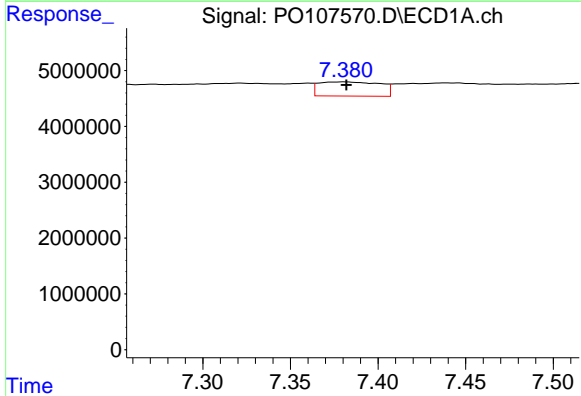
R.T.: 7.128 min
 Delta R.T.: 0.003 min
 Response: 1324188
 Conc: 5.12 ng/ml

Instrument :
 ECD_O
 ClientSampleId :
 P001-CF14-01



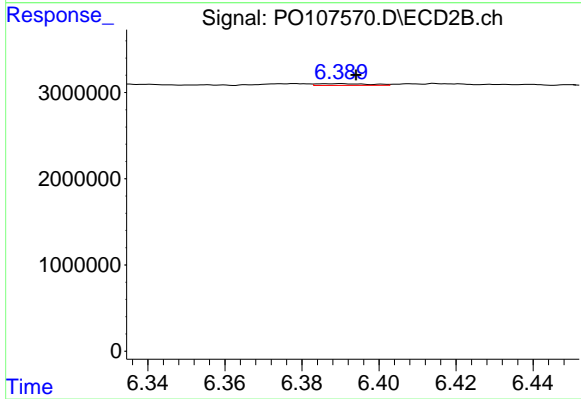
#31 AR-1260-1

R.T.: 6.195 min
 Delta R.T.: -0.012 min
 Response: 115071
 Conc: 0.74 ng/ml



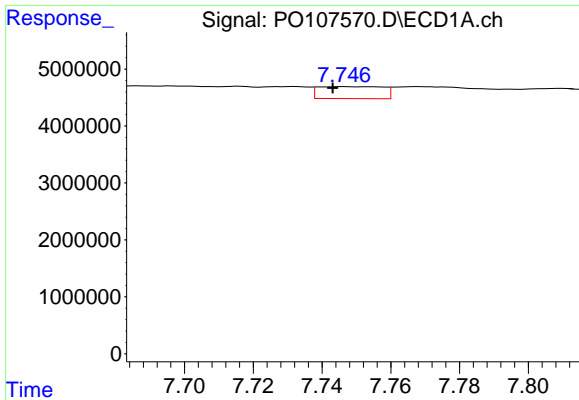
#32 AR-1260-2

R.T.: 7.381 min
 Delta R.T.: 0.000 min
 Response: 6188910
 Conc: 23.51 ng/ml



#32 AR-1260-2

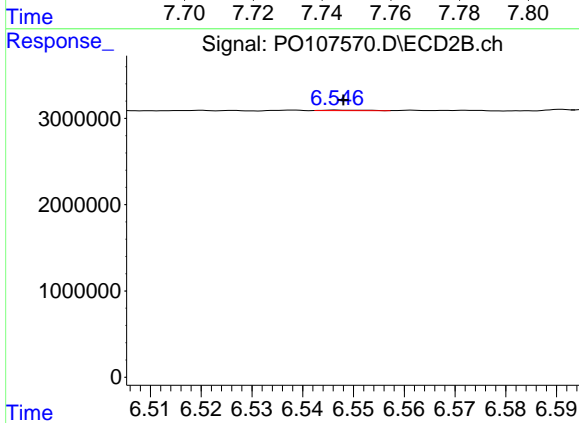
R.T.: 6.390 min
 Delta R.T.: -0.004 min
 Response: 194287
 Conc: 1.10 ng/ml



#33 AR-1260-3

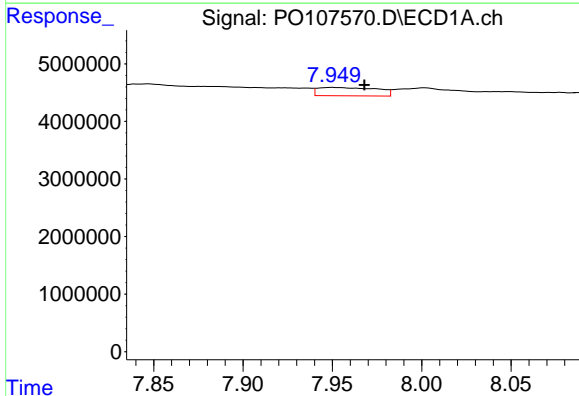
R.T.: 7.747 min
 Delta R.T.: 0.003 min
 Response: 2747352
 Conc: 15.28 ng/ml

Instrument :
 ECD_O
 ClientSampleId :
 P001-CF14-01



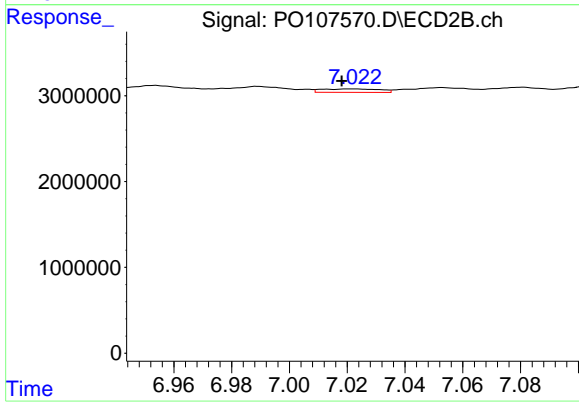
#33 AR-1260-3

R.T.: 6.547 min
 Delta R.T.: -0.001 min
 Response: 38755
 Conc: 0.23 ng/ml



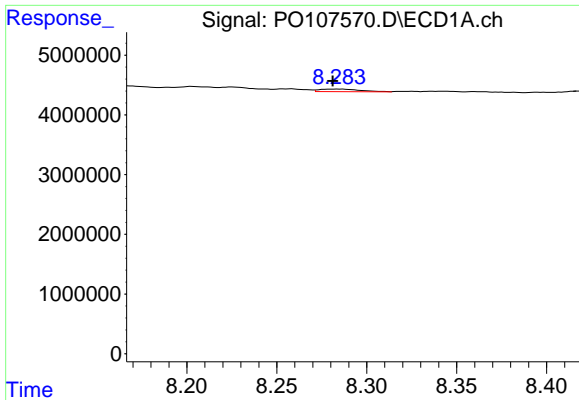
#34 AR-1260-4

R.T.: 7.950 min
 Delta R.T.: -0.018 min
 Response: 3322061
 Conc: 18.93 ng/ml



#34 AR-1260-4

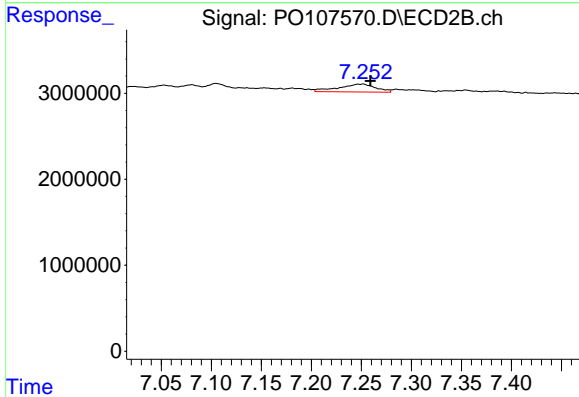
R.T.: 7.022 min
 Delta R.T.: 0.004 min
 Response: 554493
 Conc: 3.83 ng/ml



#35 AR-1260-5

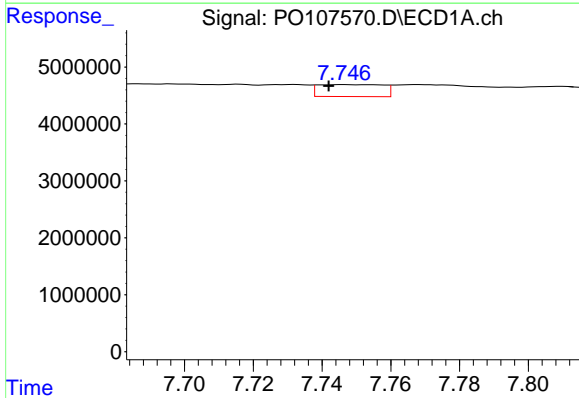
R.T.: 8.284 min
 Delta R.T.: 0.003 min
 Response: 675316
 Conc: 2.37 ng/ml

Instrument :
 ECD_O
 ClientSampleId :
 P001-CF14-01



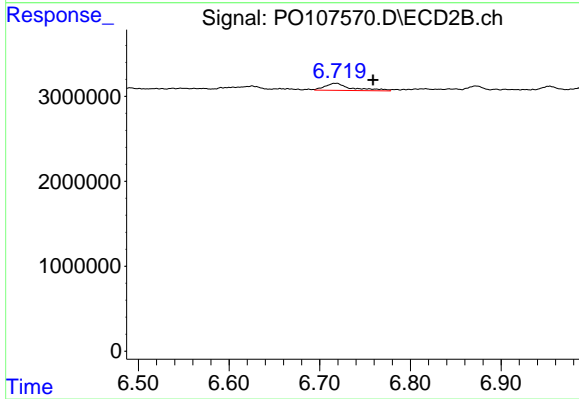
#35 AR-1260-5

R.T.: 7.252 min
 Delta R.T.: -0.007 min
 Response: 2361440
 Conc: 7.17 ng/ml



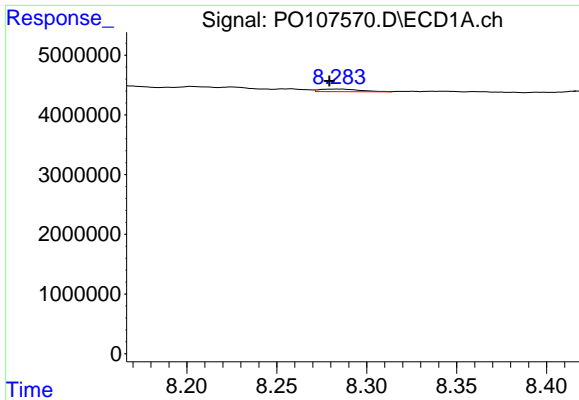
#36 AR-1262-1

R.T.: 7.747 min
 Delta R.T.: 0.005 min
 Response: 2747352
 Conc: 11.19 ng/ml



#36 AR-1262-1

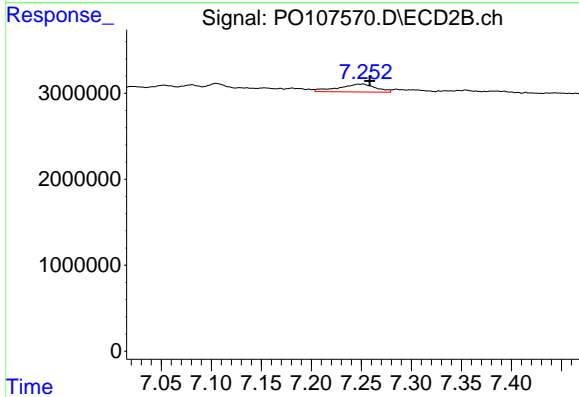
R.T.: 6.718 min
 Delta R.T.: -0.041 min
 Response: 1677153
 Conc: 7.88 ng/ml



#37 AR-1262-2

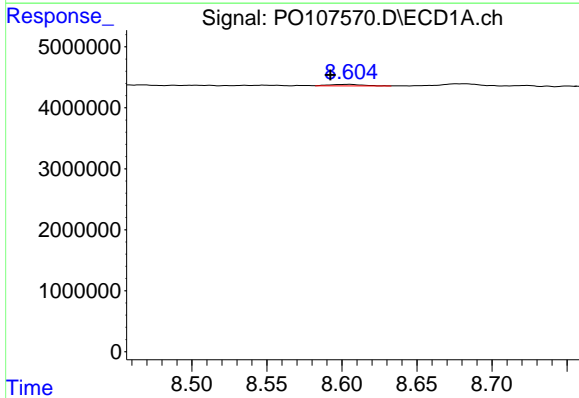
R.T.: 8.284 min
 Delta R.T.: 0.005 min
 Response: 675316
 Conc: 2.18 ng/ml

Instrument :
 ECD_O
 ClientSampleId :
 P001-CF14-01



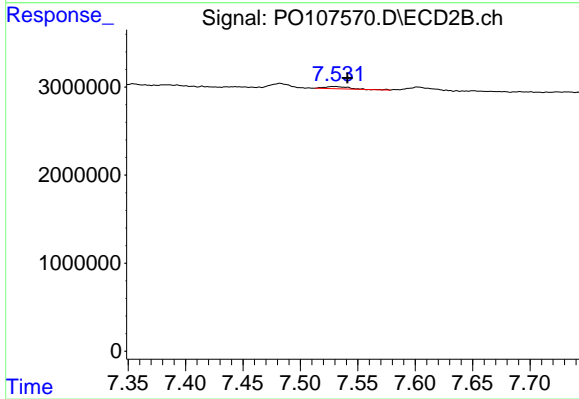
#37 AR-1262-2

R.T.: 7.252 min
 Delta R.T.: -0.007 min
 Response: 2361440
 Conc: 6.50 ng/ml



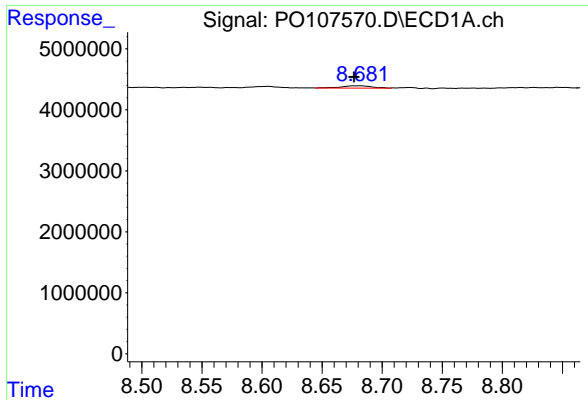
#38 AR-1262-3

R.T.: 8.605 min
 Delta R.T.: 0.013 min
 Response: 414415
 Conc: 1.98 ng/ml



#38 AR-1262-3

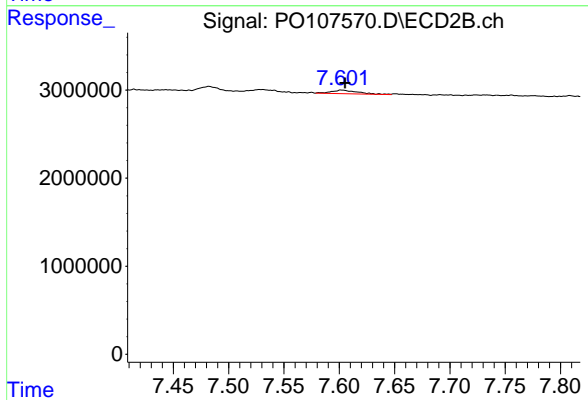
R.T.: 7.529 min
 Delta R.T.: -0.012 min
 Response: 383709
 Conc: 2.79 ng/ml



#39 AR-1262-4

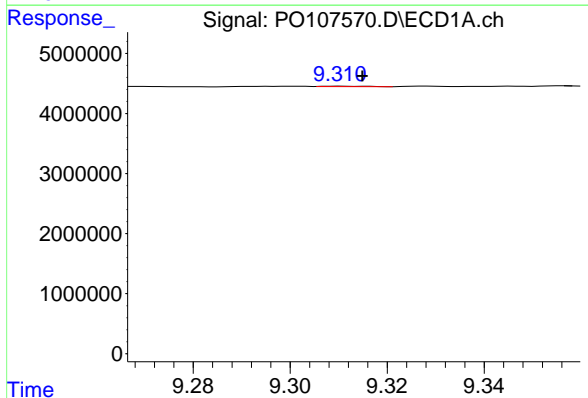
R.T.: 8.682 min
 Delta R.T.: 0.006 min
 Response: 734264
 Conc: 4.50 ng/ml

Instrument :
 ECD_O
 ClientSampleId :
 P001-CF14-01



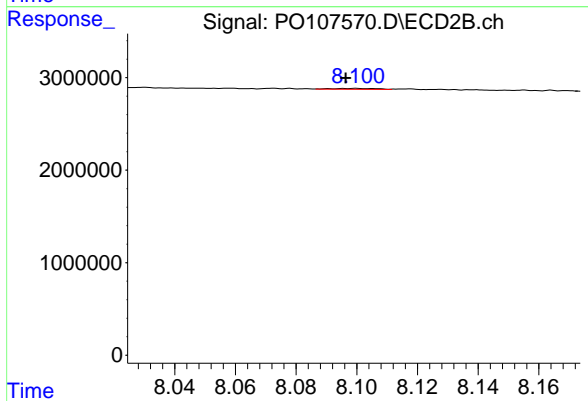
#39 AR-1262-4

R.T.: 7.602 min
 Delta R.T.: -0.003 min
 Response: 666341
 Conc: 2.52 ng/ml



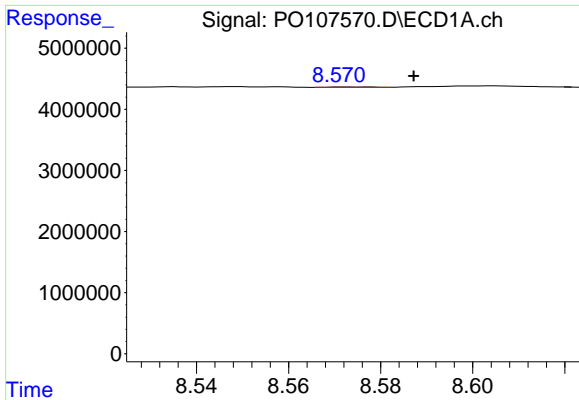
#40 AR-1262-5

R.T.: 9.310 min
 Delta R.T.: -0.005 min
 Response: 50672
 Conc: 0.49 ng/ml



#40 AR-1262-5

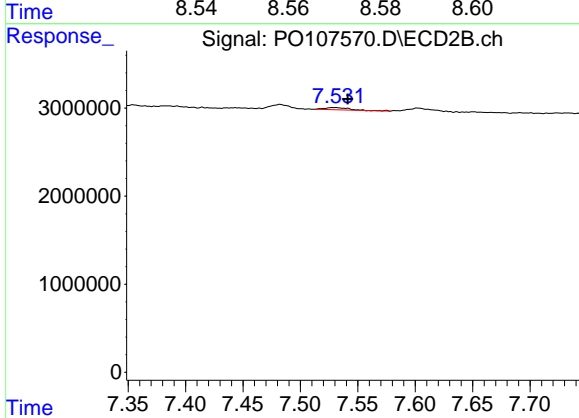
R.T.: 8.100 min
 Delta R.T.: 0.003 min
 Response: 96932
 Conc: 0.86 ng/ml



#41 AR-1268-1

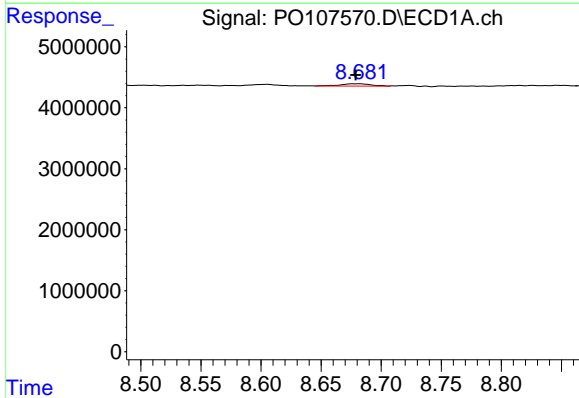
R.T.: 8.577 min
 Delta R.T.: -0.010 min
 Response: 49048
 Conc: 0.13 ng/ml

Instrument :
 ECD_O
 ClientSampleId :
 P001-CF14-01



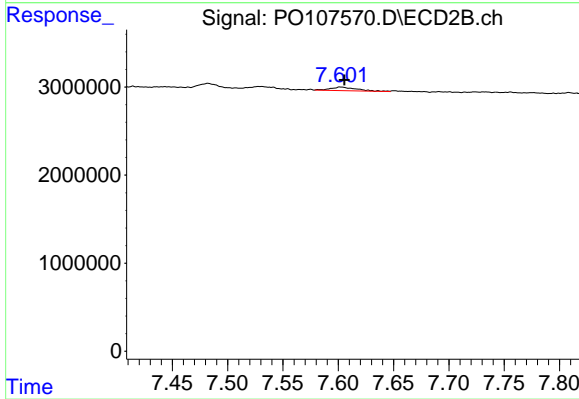
#41 AR-1268-1

R.T.: 7.529 min
 Delta R.T.: -0.012 min
 Response: 383709
 Conc: 0.95 ng/ml



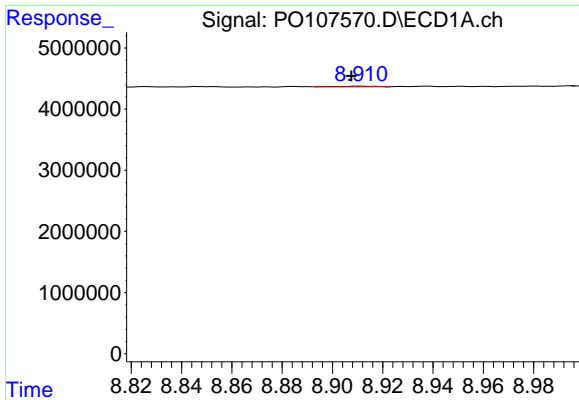
#42 AR-1268-2

R.T.: 8.682 min
 Delta R.T.: 0.004 min
 Response: 734264
 Conc: 2.28 ng/ml



#42 AR-1268-2

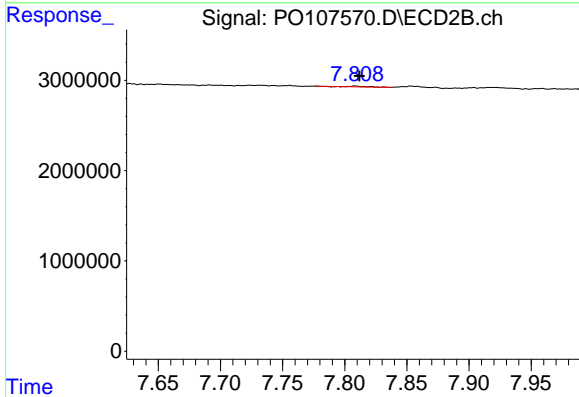
R.T.: 7.602 min
 Delta R.T.: -0.003 min
 Response: 666341
 Conc: 1.79 ng/ml



#43 AR-1268-3

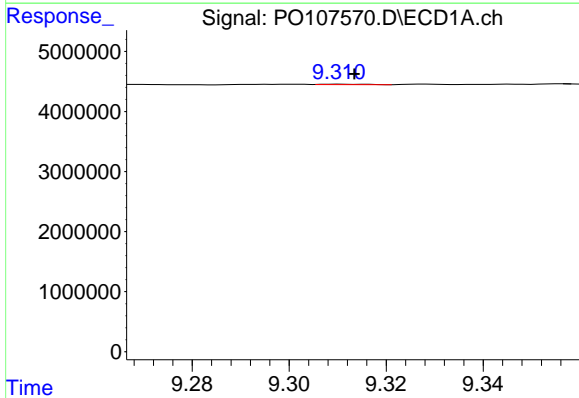
R.T.: 8.911 min
 Delta R.T.: 0.004 min
 Response: 122934
 Conc: 0.44 ng/ml

Instrument :
 ECD_O
 ClientSampleId :
 P001-CF14-01



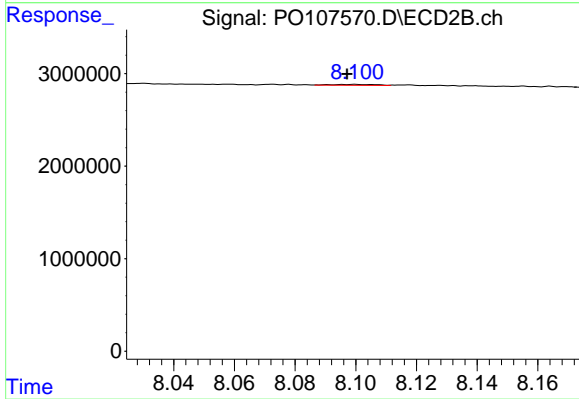
#43 AR-1268-3

R.T.: 7.808 min
 Delta R.T.: -0.003 min
 Response: 64346
 Conc: 0.19 ng/ml



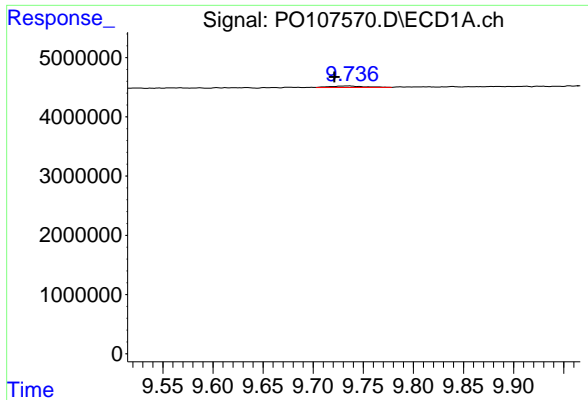
#44 AR-1268-4

R.T.: 9.310 min
 Delta R.T.: -0.003 min
 Response: 50672
 Conc: 0.46 ng/ml



#44 AR-1268-4

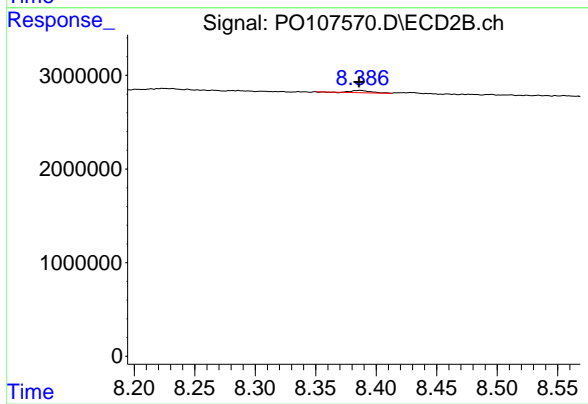
R.T.: 8.100 min
 Delta R.T.: 0.003 min
 Response: 96932
 Conc: 0.77 ng/ml



#45 AR-1268-5

R.T.: 9.736 min
Delta R.T.: 0.015 min
Response: 581807
Conc: 0.70 ng/ml

Instrument :
ECD_O
ClientSampleId :
P001-CF14-01



#45 AR-1268-5

R.T.: 8.387 min
Delta R.T.: 0.000 min
Response: 273744
Conc: 0.28 ng/ml