

Data Path : Z:\pestpcbsrv\HPCHEM1\ECD_0\Data\P0103124\
 Data File : P0107573.D
 Signal(s) : Signal #1: ECD1A.ch Signal #2: ECD2B.ch
 Acq On : 31 Oct 2024 19:36
 Operator : YP/AJ
 Sample : P4620-26MS
 Misc :
 ALS Vial : 21 Sample Multiplier: 1

Instrument :
 ECD_0
ClientSampleId :
 P001-CF16-01MS

Manual Integrations
APPROVED

Reviewed By :Yogesh Patel 11/01/2024
 Supervised By :Ankita Jodhani 11/04/2024

Integration File signal 1: autoint1.e
 Integration File signal 2: autoint2.e
 Quant Time: Oct 31 23:14:09 2024
 Quant Method : Z:\pestpcbsrv\HPCHEM1\ECD_0\methods\P0101524.M
 Quant Title : GC EXTRACTABLES
 QLast Update : Mon Oct 28 11:34:55 2024
 Response via : Initial Calibration
 Integrator: ChemStation

Volume Inj. : 2 µl
 Signal #1 Phase : ZB-MR1 Signal #2 Phase: ZB-MR2
 Signal #1 Info : 30Mx0.32mmx 0.50µ Signal #2 Info : 30M x 0.32mm x 0.25µm

Compound	RT#1	RT#2	Resp#1	Resp#2	ng/ml	ng/ml

System Monitoring Compounds						
1) SA Tetrachlo...	4.370	3.644	193.6E6	65963249	21.242	20.495
2) SA Decachlor...	10.068	8.640	39324530	42801840	16.029	15.612
Target Compounds						
3) L1 AR-1016-1	5.521	4.725	147.7E6	58674962	547.248	568.194
4) L1 AR-1016-2	5.544	4.743	214.7E6	80004040	540.887	567.534
5) L1 AR-1016-3	5.606	4.920	135.1E6	44035208	537.935	559.208
6) L1 AR-1016-4	5.703	4.961	110.0E6	33287046	571.071	503.523
7) L1 AR-1016-5	5.998	5.174	100.3E6	44413757	549.005	540.748
31) L7 AR-1260-1	7.126	6.205	134.6E6	89634204	520.505	577.709
32) L7 AR-1260-2	7.384	6.392	149.5E6	105.4E6	567.964	598.366m
33) L7 AR-1260-3	7.746	6.545	92745045	99863922	515.981	595.321
34) L7 AR-1260-4	7.971	7.017	102.0E6	73397445	581.050	507.306
35) L7 AR-1260-5	8.285	7.258	144.9E6	177.5E6	509.395	538.717

(f)=RT Delta > 1/2 Window (#)=Amounts differ by > 25% (m)=manual int.

Data Path : Z:\pestpcbsrv\HPCHEM1\ECD_O\Data\PO103124\
 Data File : PO107573.D
 Signal(s) : Signal #1: ECD1A.ch Signal #2: ECD2B.ch
 Acq On : 31 Oct 2024 19:36
 Operator : YP/AJ
 Sample : P4620-26MS
 Misc :
 ALS Vial : 21 Sample Multiplier: 1

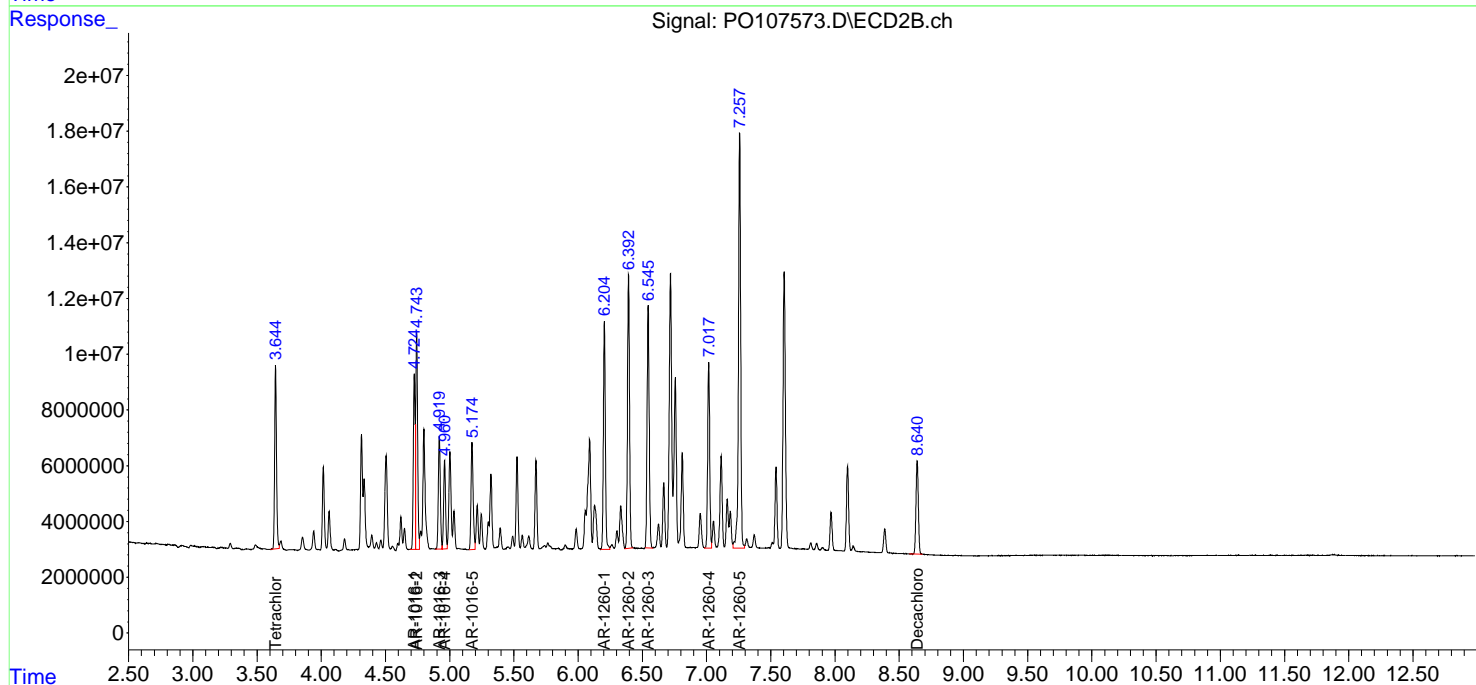
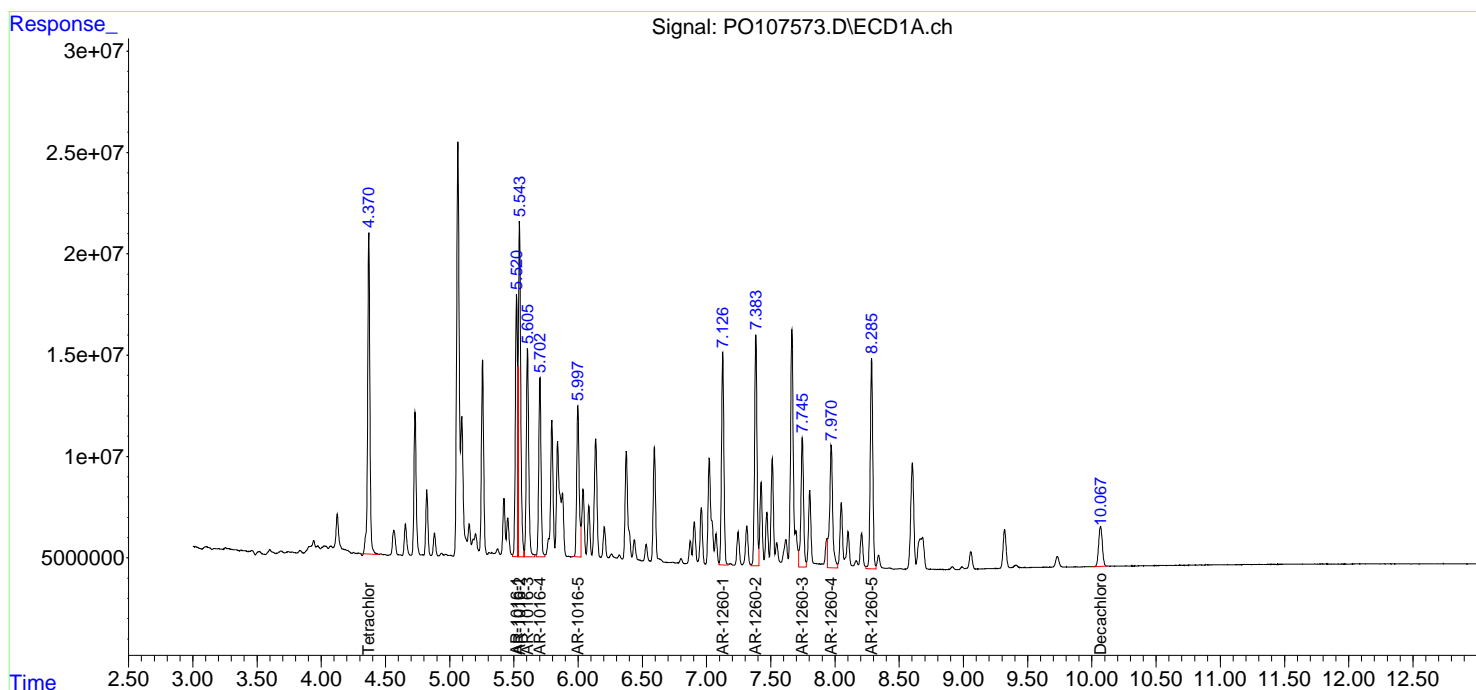
Instrument :
 ECD_O
ClientSampleId :
 P001-CF16-01MS

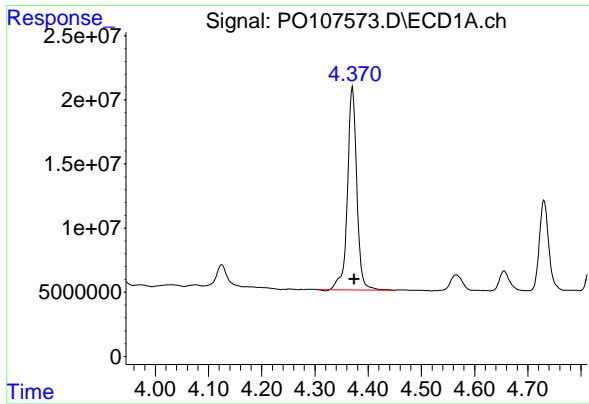
Manual Integrations
APPROVED

Reviewed By :Yogesh Patel 11/01/2024
 Supervised By :Ankita Jodhani 11/04/2024

Integration File signal 1: autoint1.e
 Integration File signal 2: autoint2.e
 Quant Time: Oct 31 23:14:09 2024
 Quant Method : Z:\pestpcbsrv\HPCHEM1\ECD_O\methods\PO101524.M
 Quant Title : GC EXTRACTABLES
 QLast Update : Mon Oct 28 11:34:55 2024
 Response via : Initial Calibration
 Integrator: ChemStation

Volume Inj. : 2 µl
 Signal #1 Phase : ZB-MR1 Signal #2 Phase: ZB-MR2
 Signal #1 Info : 30Mx0.32mmx 0.50µm Signal #2 Info : 30M x 0.32mm x 0.25µm





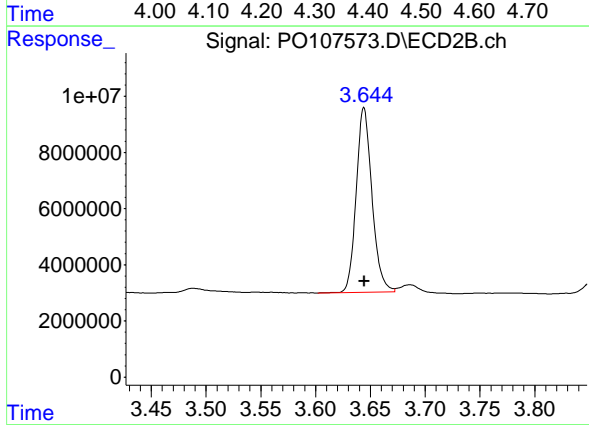
#1 Tetrachloro-m-xylene

R.T.: 4.370 min
 Delta R.T.: -0.003 min
 Response: 193598798
 Conc: 21.24 ng/ml

Instrument :
 ECD_O
 Client Sample Id :
 P001-CF16-01MS

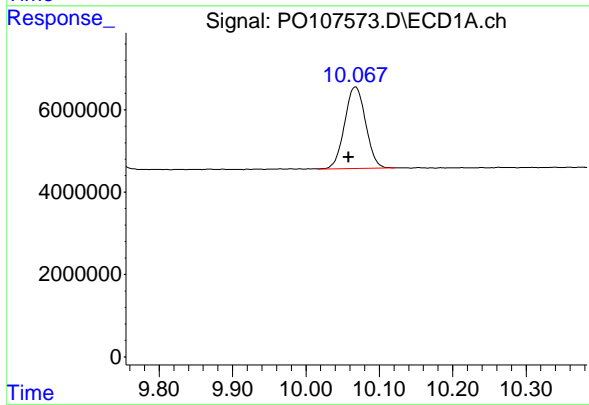
Manual Integrations
 APPROVED

Reviewed By :Yogesh Patel 11/01/2024
 Supervised By :Ankita Jodhani 11/04/2024



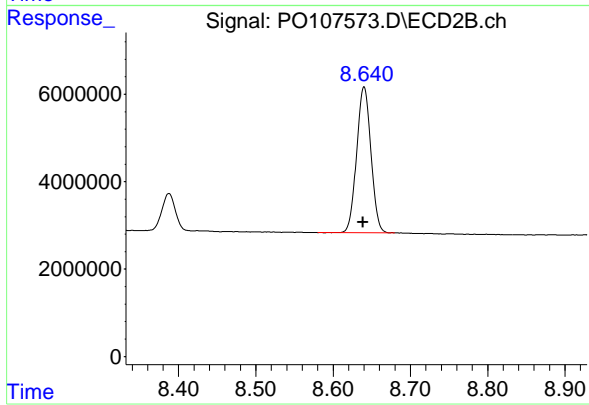
#1 Tetrachloro-m-xylene

R.T.: 3.644 min
 Delta R.T.: 0.000 min
 Response: 65963249
 Conc: 20.50 ng/ml



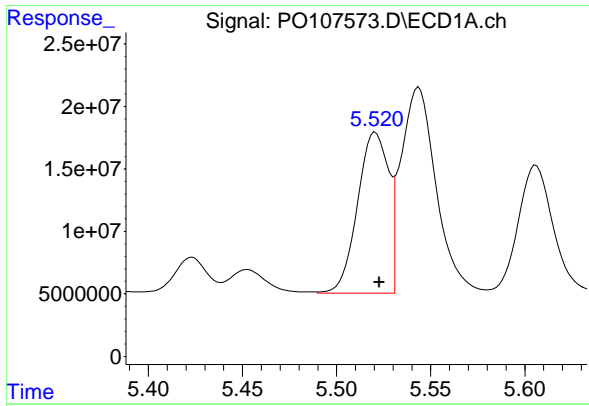
#2 Decachlorobiphenyl

R.T.: 10.068 min
 Delta R.T.: 0.009 min
 Response: 39324530
 Conc: 16.03 ng/ml



#2 Decachlorobiphenyl

R.T.: 8.640 min
 Delta R.T.: 0.001 min
 Response: 42801840
 Conc: 15.61 ng/ml



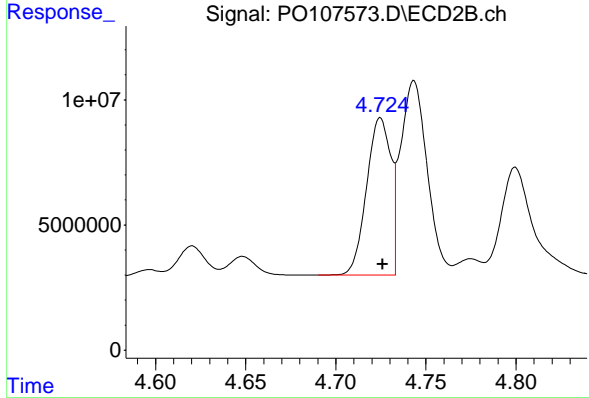
#3 AR-1016-1

R.T.: 5.521 min
 Delta R.T.: -0.002 min
 Response: 147655210
 Conc: 547.25 ng/ml

Instrument :
 ECD_O
 ClientSampleId :
 P001-CF16-01MS

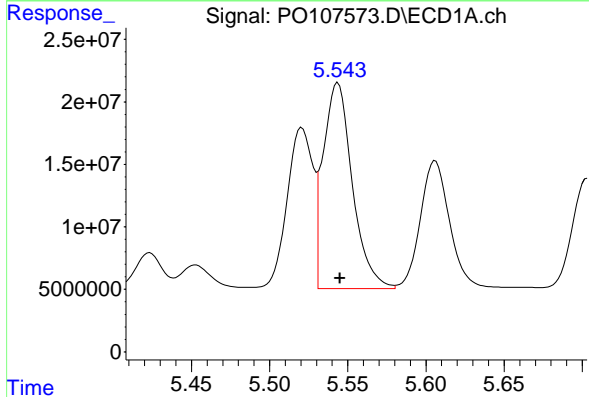
Manual Integrations
 APPROVED

Reviewed By :Yogesh Patel 11/01/2024
 Supervised By :Ankita Jodhani 11/04/2024



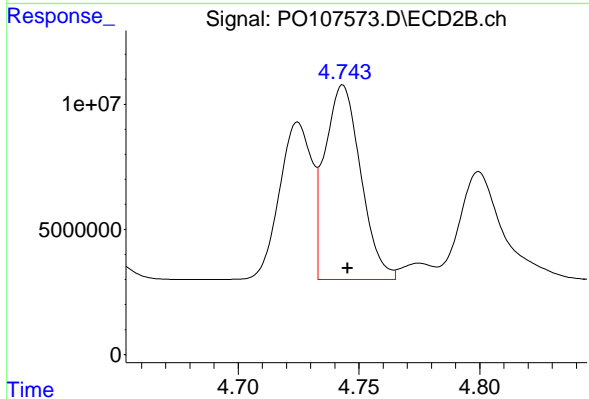
#3 AR-1016-1

R.T.: 4.725 min
 Delta R.T.: -0.001 min
 Response: 58674962
 Conc: 568.19 ng/ml



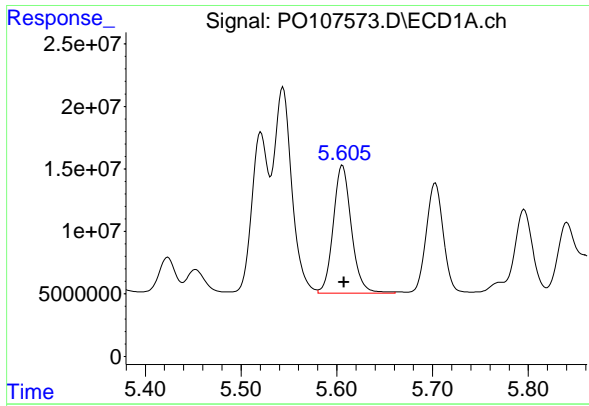
#4 AR-1016-2

R.T.: 5.544 min
 Delta R.T.: -0.001 min
 Response: 214669828
 Conc: 540.89 ng/ml



#4 AR-1016-2

R.T.: 4.743 min
 Delta R.T.: -0.002 min
 Response: 80004040
 Conc: 567.53 ng/ml



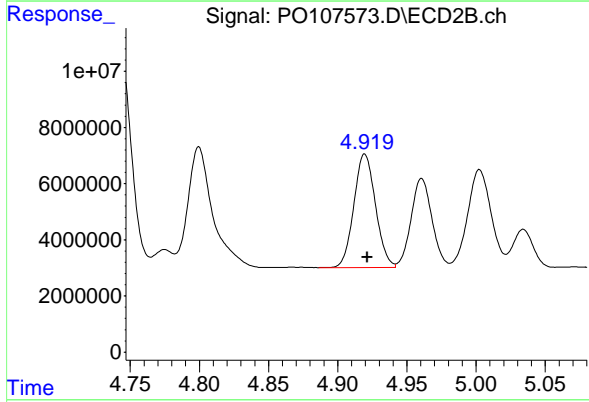
#5 AR-1016-3

R.T.: 5.606 min
 Delta R.T.: -0.001 min
 Response: 135112813
 Conc: 537.93 ng/ml

Instrument :
 ECD_O
 ClientSampleId :
 P001-CF16-01MS

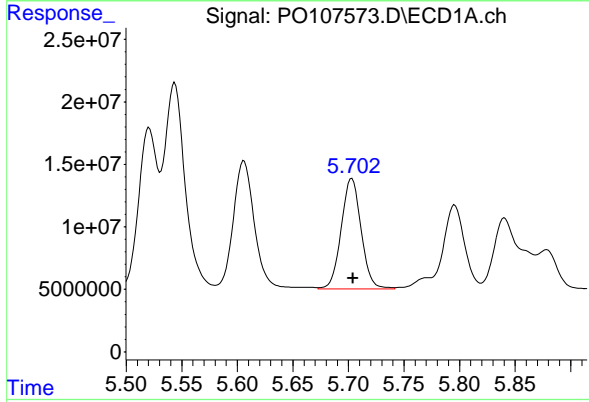
Manual Integrations
 APPROVED

Reviewed By :Yogesh Patel 11/01/2024
 Supervised By :Ankita Jodhani 11/04/2024



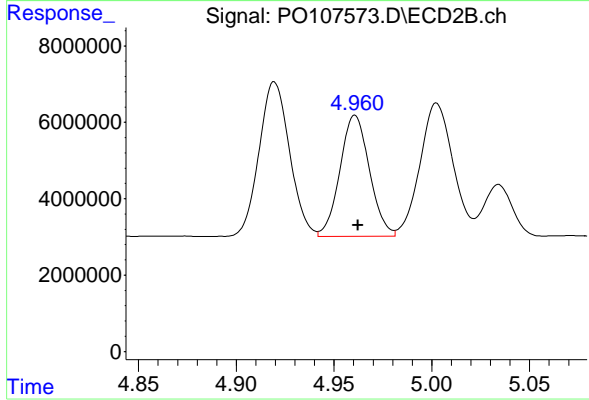
#5 AR-1016-3

R.T.: 4.920 min
 Delta R.T.: -0.002 min
 Response: 44035208
 Conc: 559.21 ng/ml



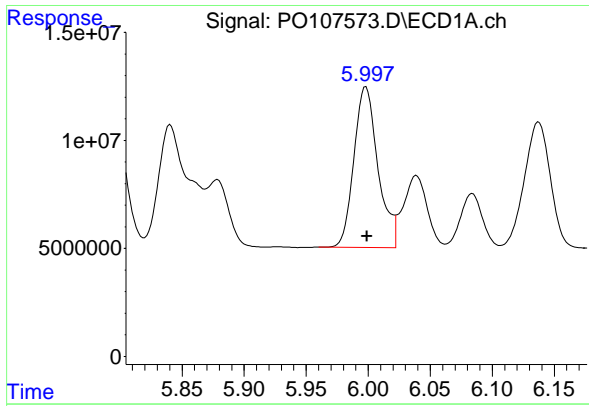
#6 AR-1016-4

R.T.: 5.703 min
 Delta R.T.: 0.000 min
 Response: 109995145
 Conc: 571.07 ng/ml



#6 AR-1016-4

R.T.: 4.961 min
 Delta R.T.: -0.002 min
 Response: 33287046
 Conc: 503.52 ng/ml



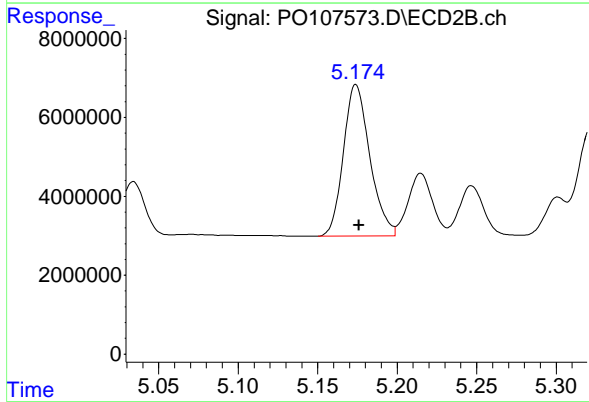
#7 AR-1016-5

R.T.: 5.998 min
 Delta R.T.: 0.000 min
 Response: 100277688
 Conc: 549.00 ng/ml

Instrument :
 ECD_O
 ClientSampleId :
 P001-CF16-01MS

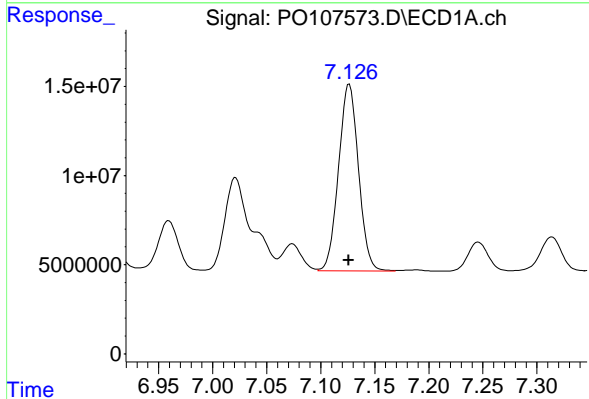
Manual Integrations
 APPROVED

Reviewed By :Yogesh Patel 11/01/2024
 Supervised By :Ankita Jodhani 11/04/2024



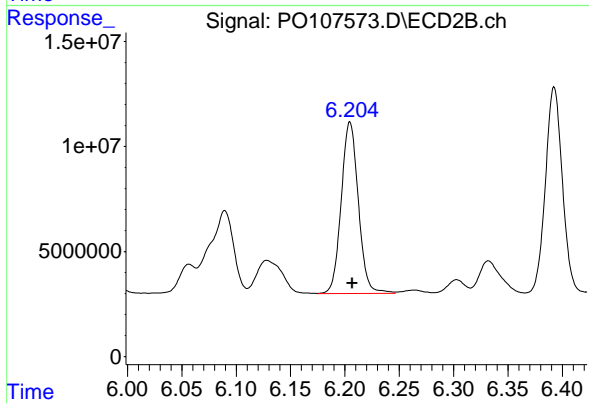
#7 AR-1016-5

R.T.: 5.174 min
 Delta R.T.: -0.002 min
 Response: 44413757
 Conc: 540.75 ng/ml



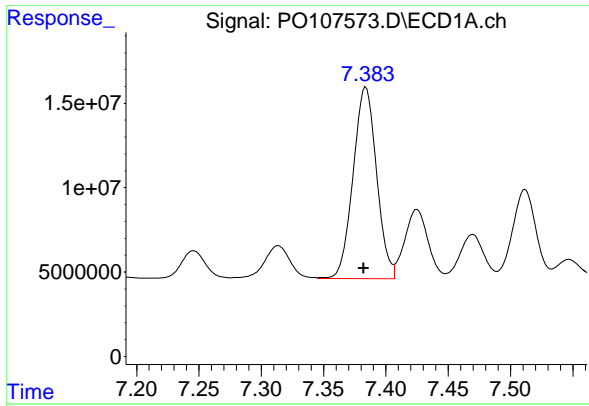
#31 AR-1260-1

R.T.: 7.126 min
 Delta R.T.: 0.000 min
 Response: 134596646
 Conc: 520.51 ng/ml



#31 AR-1260-1

R.T.: 6.205 min
 Delta R.T.: -0.002 min
 Response: 89634204
 Conc: 577.71 ng/ml



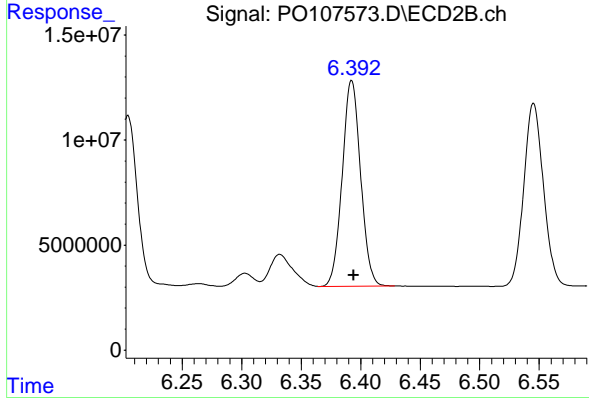
#32 AR-1260-2

R.T.: 7.384 min
 Delta R.T.: 0.002 min
 Response: 149499590
 Conc: 567.96 ng/ml

Instrument :
 ECD_O
 ClientSampleId :
 P001-CF16-01MS

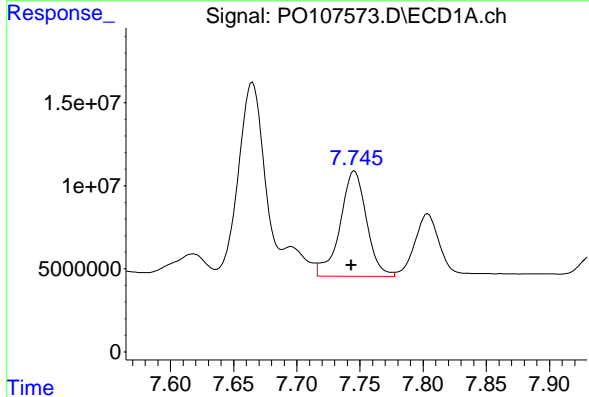
Manual Integrations
 APPROVED

Reviewed By :Yogesh Patel 11/01/2024
 Supervised By :Ankita Jodhani 11/04/2024



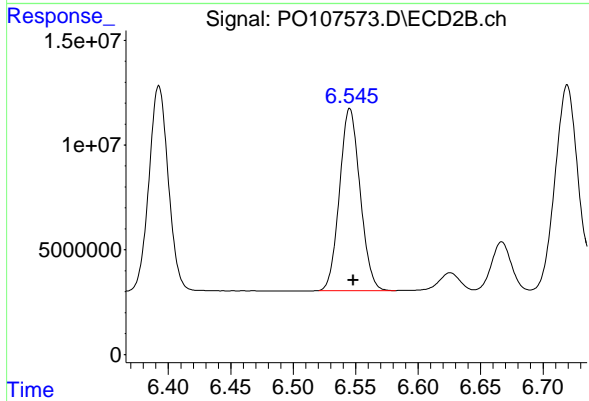
#32 AR-1260-2

R.T.: 6.392 min
 Delta R.T.: -0.002 min
 Response: 105381645
 Conc: 598.37 ng/ml m



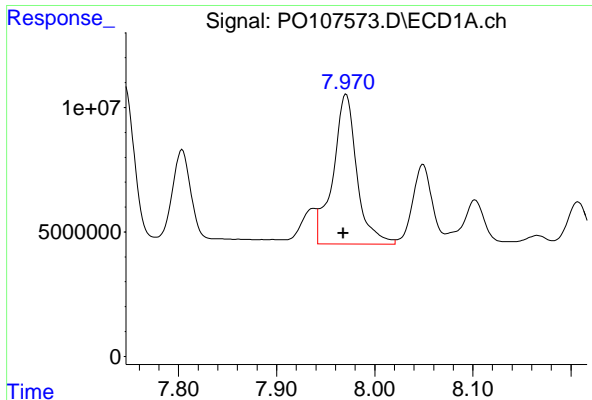
#33 AR-1260-3

R.T.: 7.746 min
 Delta R.T.: 0.003 min
 Response: 92745045
 Conc: 515.98 ng/ml



#33 AR-1260-3

R.T.: 6.545 min
 Delta R.T.: -0.003 min
 Response: 99863922
 Conc: 595.32 ng/ml



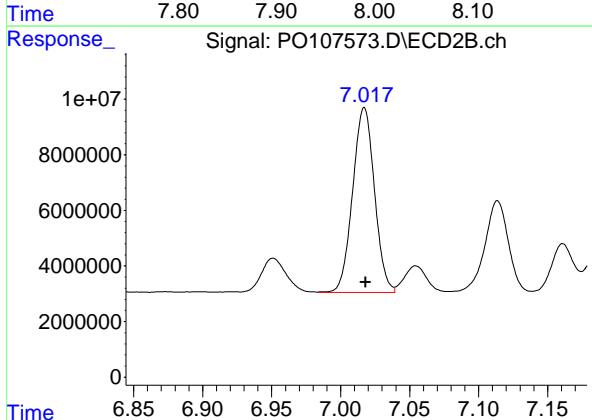
#34 AR-1260-4

R.T.: 7.971 min
 Delta R.T.: 0.003 min
 Response: 101976539
 Conc: 581.05 ng/ml

Instrument :
 ECD_O
 ClientSampleId :
 P001-CF16-01MS

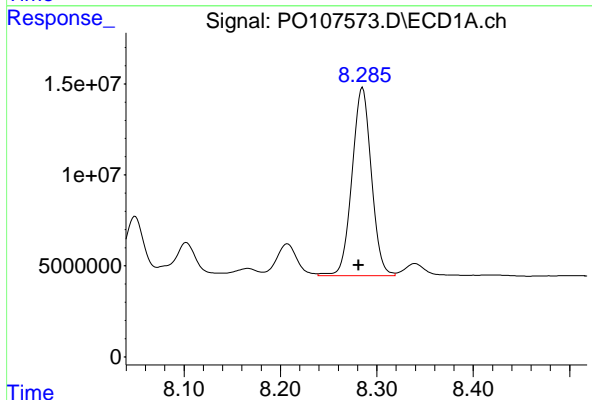
Manual Integrations
 APPROVED

Reviewed By :Yogesh Patel 11/01/2024
 Supervised By :Ankita Jodhani 11/04/2024



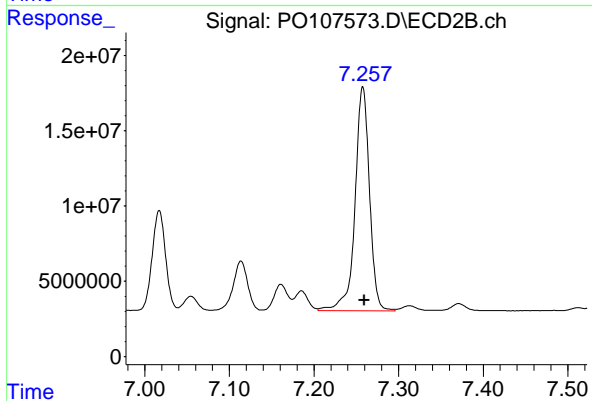
#34 AR-1260-4

R.T.: 7.017 min
 Delta R.T.: 0.000 min
 Response: 73397445
 Conc: 507.31 ng/ml



#35 AR-1260-5

R.T.: 8.285 min
 Delta R.T.: 0.004 min
 Response: 144868720
 Conc: 509.39 ng/ml



#35 AR-1260-5

R.T.: 7.258 min
 Delta R.T.: -0.001 min
 Response: 177475358
 Conc: 538.72 ng/ml