

Data Path : \\74.0.250.170\Terastorage\pestpcbsrv\HPCHEM1\ECD_0\Data\P0110118\
 Data File : P0050925.D
 Signal(s) : Signal #1: ECD1A.CH Signal #2: ECD2B.CH
 Acq On : 02 Nov 2018 5:32
 Operator : SM/SJ
 Sample : J5734-02
 Misc :
 ALS Vial : 59 Sample Multiplier: 1

Instrument :
 ECD_0
 ClientSampleId :
 B-21(0-10)

Integration File signal 1: autoint1.e
 Integration File signal 2: autoint2.e
 Quant Time: Nov 02 05:57:11 2018
 Quant Method : Z:\pestpcbsrv\HPCHEM1\ECD_0\methods\P0102918.M
 Quant Title : GC EXTRACTABLES
 QLast Update : Tue Oct 30 07:48:38 2018
 Response via : Initial Calibration
 Integrator: ChemStation 6890 Scale Mode: Small noise peaks clipped

Volume Inj. : 2 µl
 Signal #1 Phase : ZB-MR1 Signal #2 Phase: ZB-MR2
 Signal #1 Info : 30Mx0.32mmx 0.50µ Signal #2 Info : 30M x 0.32mm x 0.25µm

| Compound | RT#1 | RT#2 | Resp#1 | Resp#2 | ng/ml | ng/ml |
|----------|------|------|--------|--------|-------|-------|
|----------|------|------|--------|--------|-------|-------|

 System Monitoring Compounds

| | | | | | | |
|--------------------|--------|-------|---------|---------|--------|---------|
| 1) SA Tetrachlo... | 4.353 | 3.347 | 9479443 | 4216145 | 18.964 | 19.398 |
| 2) SA Decachlor... | 10.010 | 8.090 | 4537334 | 2841091 | 14.598 | 11.107m |

Target Compounds

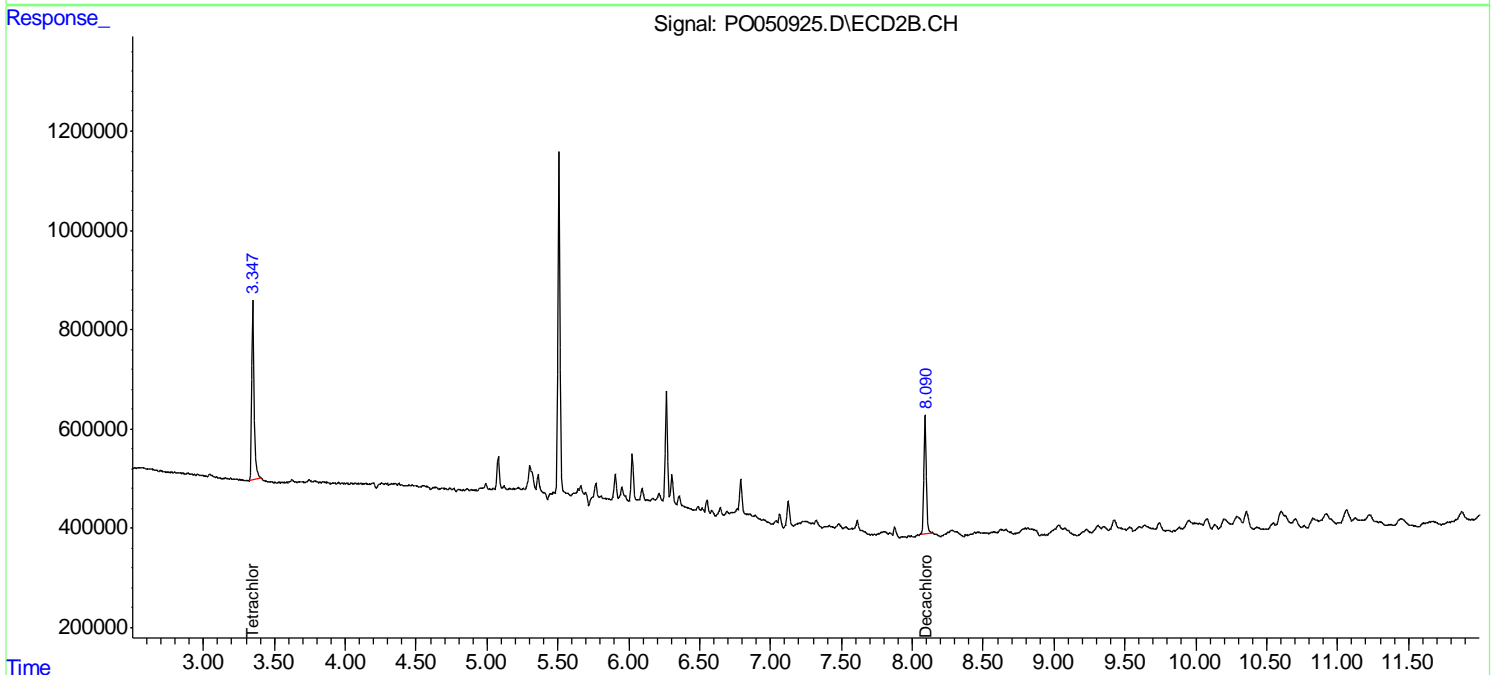
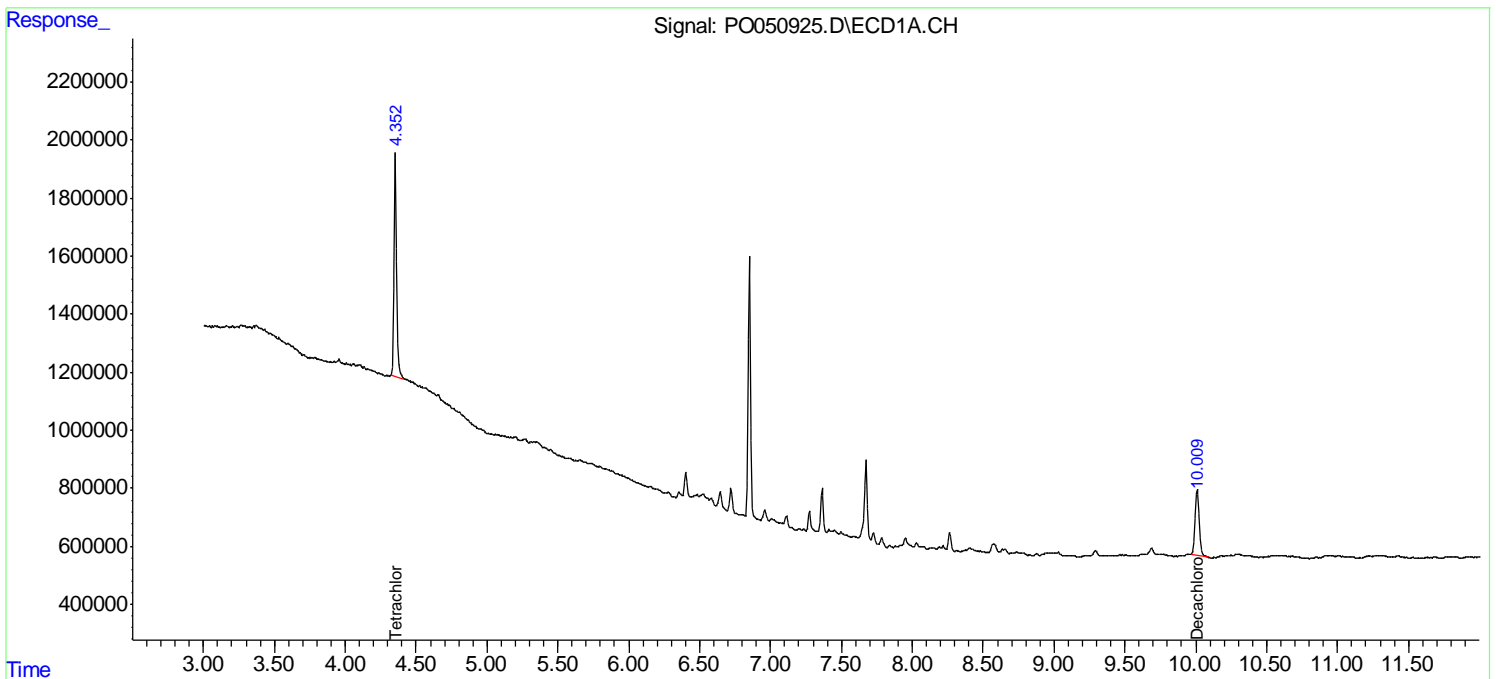
(f)=RT Delta > 1/2 Window (#)=Amounts differ by > 25% (m)=manual int.

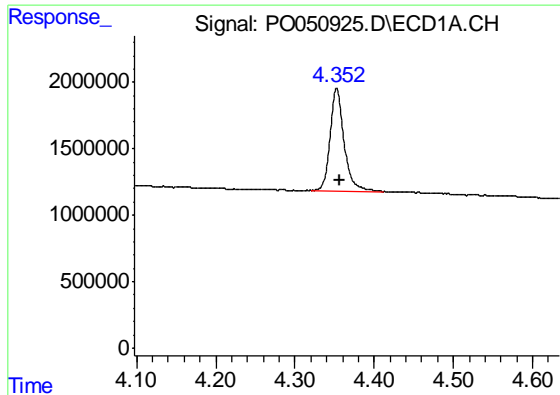
Data Path : \\74.0.250.170\Terastorage\pestpcbsrv\HPCHEM1\ECD_O\Data\PO110118\
 Data File : PO050925.D
 Signal(s) : Signal #1: ECD1A.CH Signal #2: ECD2B.CH
 Acq On : 02 Nov 2018 5:32
 Operator : SM/SJ
 Sample : J5734-02
 Misc :
 ALS Vial : 59 Sample Multiplier: 1

Instrument :
 ECD_O
 ClientSampleId :
 B-21(0-10)

Integration File signal 1: autoint1.e
 Integration File signal 2: autoint2.e
 Quant Time: Nov 02 05:57:11 2018
 Quant Method : Z:\pestpcbsrv\HPCHEM1\ECD_O\methods\PO102918.M
 Quant Title : GC EXTRACTABLES
 QLast Update : Tue Oct 30 07:48:38 2018
 Response via : Initial Calibration
 Integrator: ChemStation 6890 Scale Mode: Small noise peaks clipped

Volume Inj. : 2 µl
 Signal #1 Phase : ZB-MR1 Signal #2 Phase: ZB-MR2
 Signal #1 Info : 30Mx0.32mmx 0.50µ Signal #2 Info : 30M x 0.32mm x 0.25µm

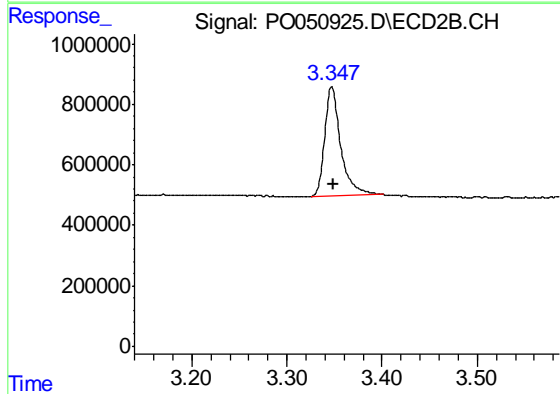




#1 Tetrachloro-m-xylene

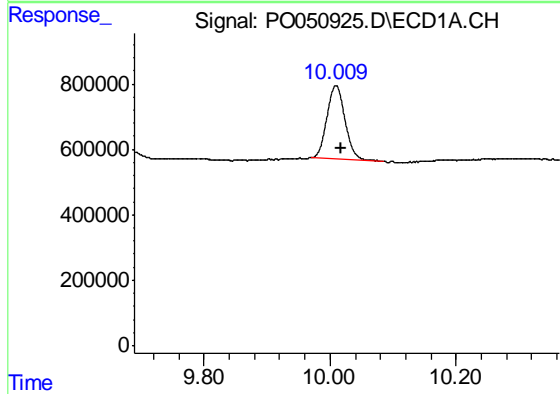
R.T.: 4.353 min
 Delta R.T.: -0.003 min
 Response: 9479443
 Conc: 18.96 ng/ml

Instrument :
 ECD_O
 ClientSampleId :
 B-21(0-10)



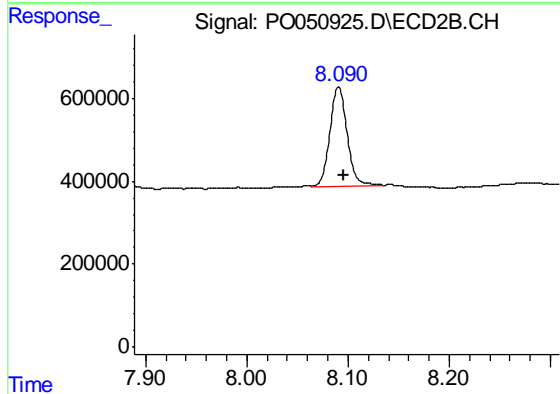
#1 Tetrachloro-m-xylene

R.T.: 3.347 min
 Delta R.T.: -0.001 min
 Response: 4216145
 Conc: 19.40 ng/ml



#2 Decachlorobiphenyl

R.T.: 10.010 min
 Delta R.T.: -0.008 min
 Response: 4537334
 Conc: 14.60 ng/ml



#2 Decachlorobiphenyl

R.T.: 8.090 min
 Delta R.T.: -0.006 min
 Response: 2841091
 Conc: 11.11 ng/ml m