

Data Path : Z:\pestpcbsrv\HPCHEM1\ECD_0\Data\PO110121\
 Data File : PO082383.D
 Signal(s) : Signal #1: ECD1A.CH Signal #2: ECD2B.CH
 Acq On : 01 Nov 2021 18:12
 Operator : AJ\MA
 Sample : M4409-01
 Misc :
 ALS Vial : 17 Sample Multiplier: 1

Instrument :
 ECD_0
 ClientSampleId :
 VNJ-207-ETGI-340

Integration File signal 1: autoint1.e
 Integration File signal 2: autoint2.e
 Quant Time: Nov 02 04:28:34 2021
 Quant Method : Z:\pestpcbsrv\HPCHEM1\ECD_0\methods\PO101821.M
 Quant Title : GC EXTRACTABLES
 QLast Update : Fri Oct 29 11:08:21 2021
 Response via : Initial Calibration
 Integrator: ChemStation 6890 Scale Mode: Small noise peaks clipped

Volume Inj. : 2 µl
 Signal #1 Phase : ZB-MR1 Signal #2 Phase: ZB-MR2
 Signal #1 Info : 30Mx0.32mmx 0.50µ Signal #2 Info : 30M x 0.32mm x 0.25µm

Compound	RT#1	RT#2	Resp#1	Resp#2	ng/ml	ng/ml

System Monitoring Compounds						
1) SA Tetrachlo...	4.975	3.970	1363103	543465	16.869	18.420
2) SA Decachlor...	11.089	9.290	1127159	492058	20.280	19.319
Target Compounds						
31) L7 AR-1260-1	8.009	6.824	467431	316196	165.618	191.014
32) L7 AR-1260-2	8.277	7.022	469071	300837	141.001	149.981
33) L7 AR-1260-3	8.645	7.177	394673	285520	175.103	150.715
34) L7 AR-1260-4	8.876	7.662	503073	233592	190.029	170.424
35) L7 AR-1260-5	9.211	7.911	913300	535243	166.706	161.989

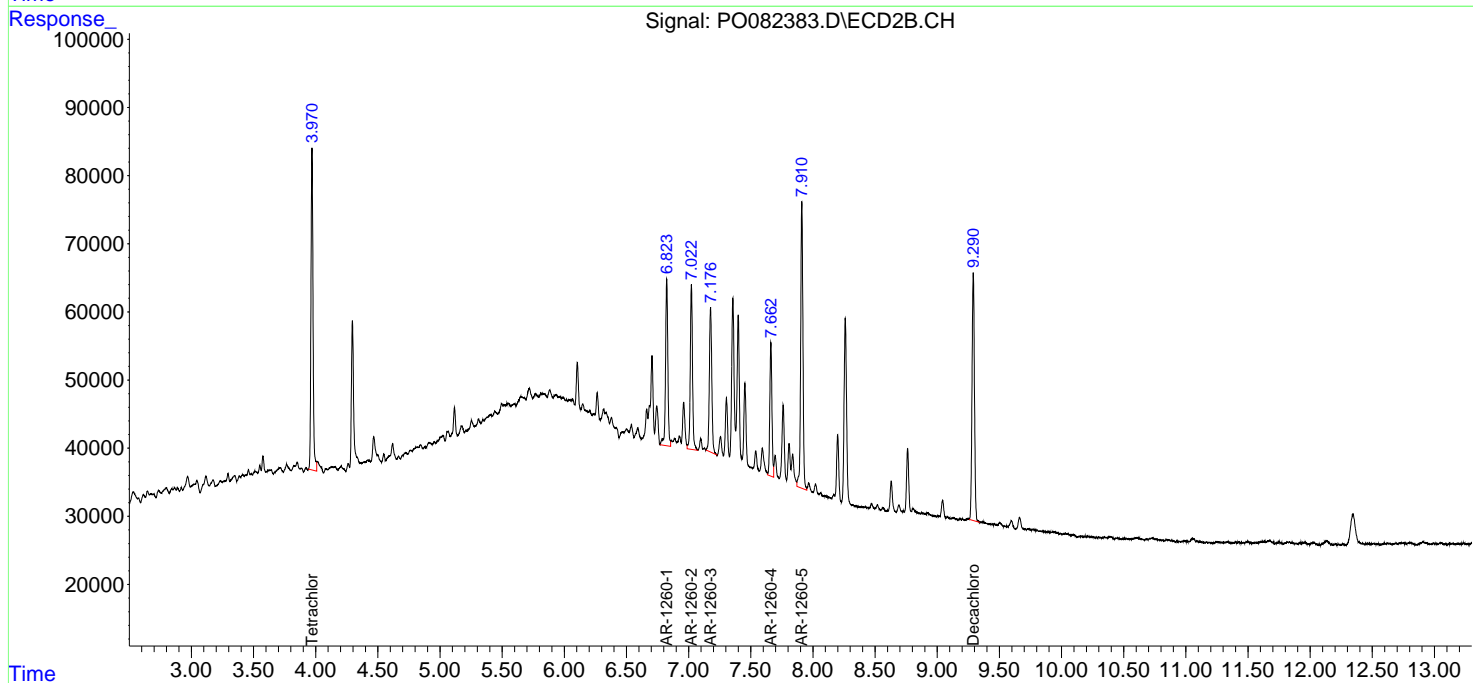
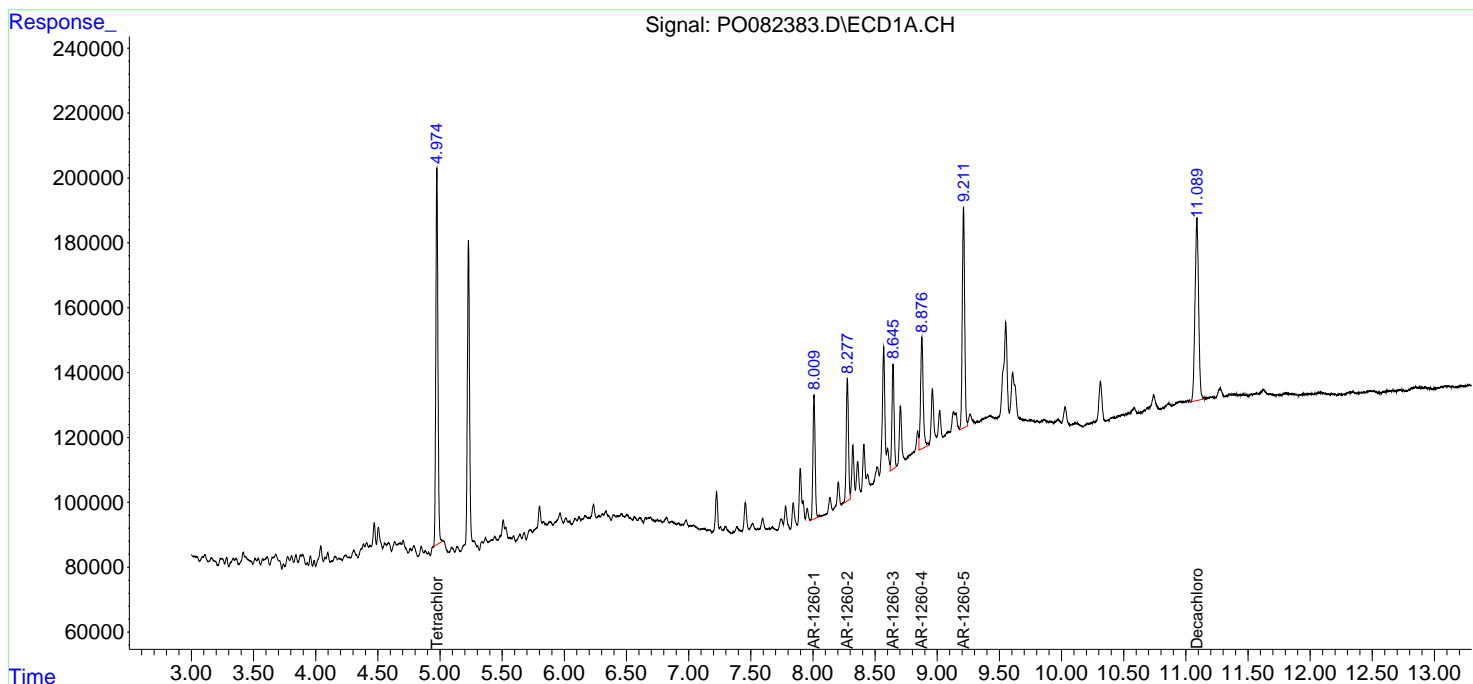
(f)=RT Delta > 1/2 Window (#)=Amounts differ by > 25% (m)=manual int.

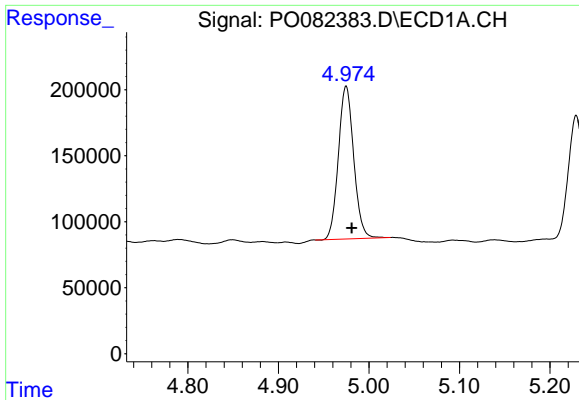
Data Path : Z:\pestpcbsrv\HPCHEM1\ECD_O\Data\PO110121\
 Data File : PO082383.D
 Signal(s) : Signal #1: ECD1A.CH Signal #2: ECD2B.CH
 Acq On : 01 Nov 2021 18:12
 Operator : AJ\MA
 Sample : M4409-01
 Misc :
 ALS Vial : 17 Sample Multiplier: 1

Instrument :
 ECD_O
 ClientSampleId :
 VNJ-207-ETGI-340

Integration File signal 1: autoint1.e
 Integration File signal 2: autoint2.e
 Quant Time: Nov 02 04:28:34 2021
 Quant Method : Z:\pestpcbsrv\HPCHEM1\ECD_O\methods\PO101821.M
 Quant Title : GC EXTRACTABLES
 QLast Update : Fri Oct 29 11:08:21 2021
 Response via : Initial Calibration
 Integrator: ChemStation 6890 Scale Mode: Small noise peaks clipped

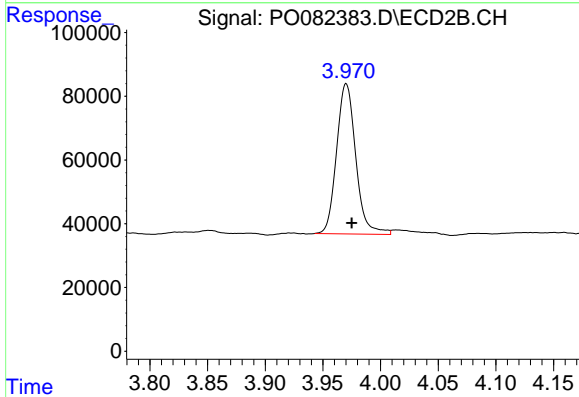
Volume Inj. : 2 µl
 Signal #1 Phase : ZB-MR1 Signal #2 Phase: ZB-MR2
 Signal #1 Info : 30Mx0.32mmx 0.50µ Signal #2 Info : 30M x 0.32mm x 0.25µm



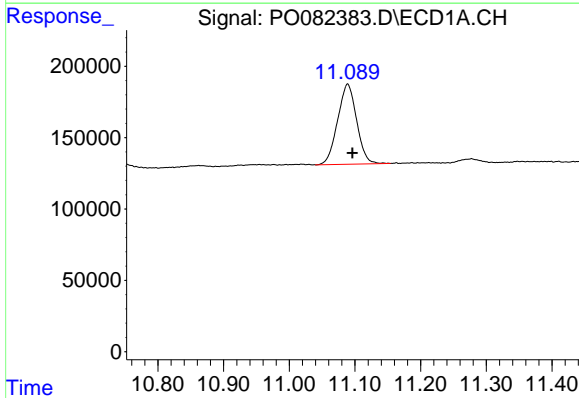


#1 Tetrachloro-m-xylene
 R.T.: 4.975 min
 Delta R.T.: -0.006 min
 Response: 1363103
 Conc: 16.87 ng/ml

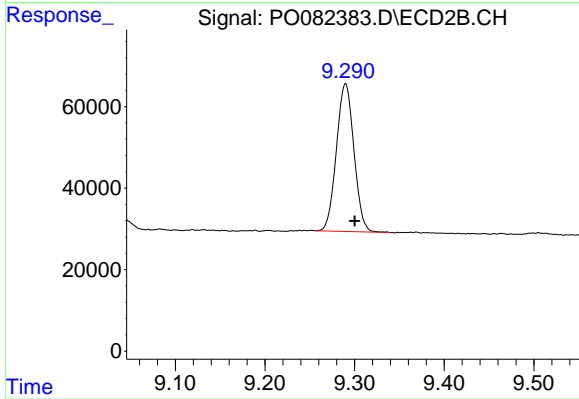
Instrument :
 ECD_O
 ClientSampleId :
 VNJ-207-ETGI-340



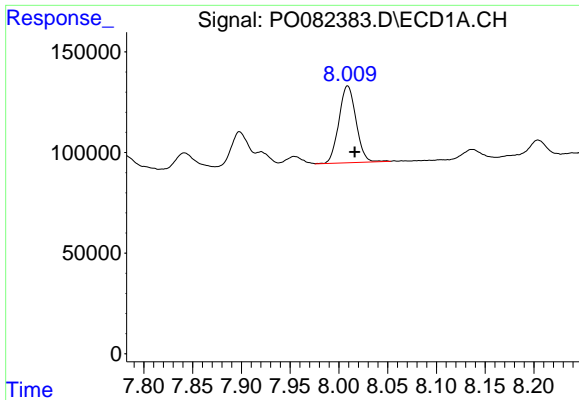
#1 Tetrachloro-m-xylene
 R.T.: 3.970 min
 Delta R.T.: -0.005 min
 Response: 543465
 Conc: 18.42 ng/ml



#2 Decachlorobiphenyl
 R.T.: 11.089 min
 Delta R.T.: -0.007 min
 Response: 1127159
 Conc: 20.28 ng/ml



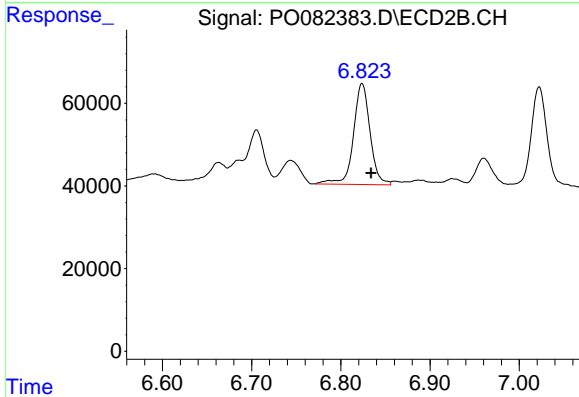
#2 Decachlorobiphenyl
 R.T.: 9.290 min
 Delta R.T.: -0.010 min
 Response: 492058
 Conc: 19.32 ng/ml



#31 AR-1260-1

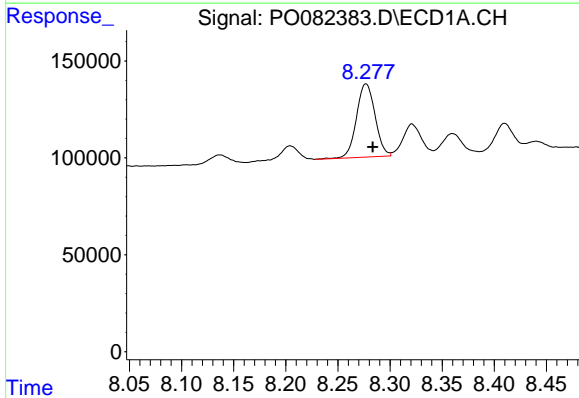
R.T.: 8.009 min
 Delta R.T.: -0.007 min
 Response: 467431
 Conc: 165.62 ng/ml

Instrument :
 ECD_O
 ClientSampleId :
 VNJ-207-ETGI-340



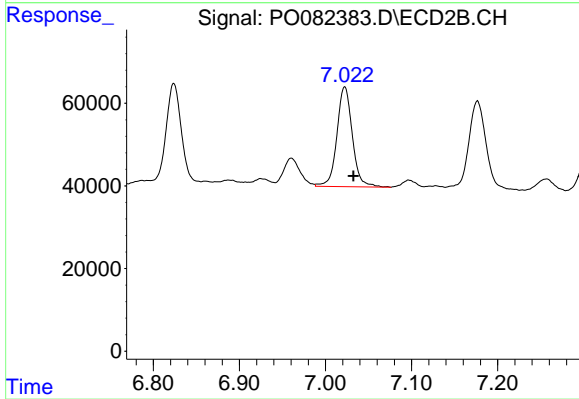
#31 AR-1260-1

R.T.: 6.824 min
 Delta R.T.: -0.010 min
 Response: 316196
 Conc: 191.01 ng/ml



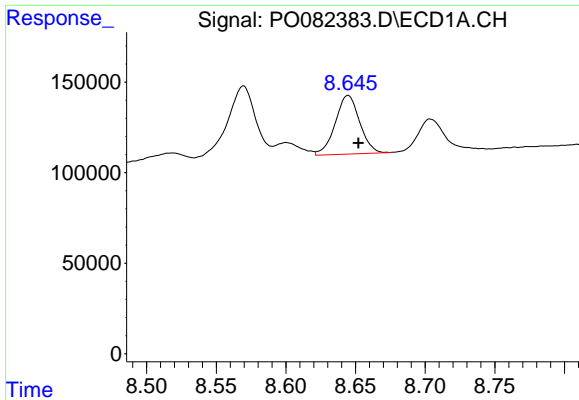
#32 AR-1260-2

R.T.: 8.277 min
 Delta R.T.: -0.006 min
 Response: 469071
 Conc: 141.00 ng/ml



#32 AR-1260-2

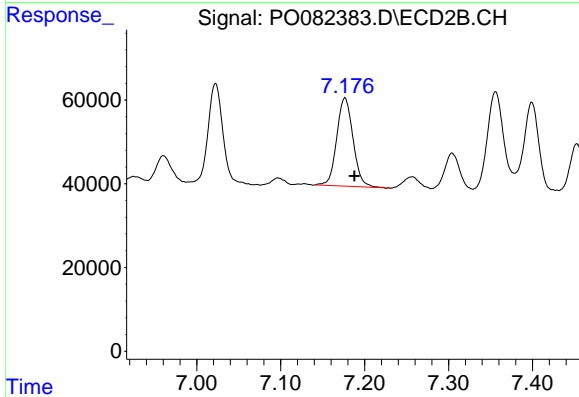
R.T.: 7.022 min
 Delta R.T.: -0.010 min
 Response: 300837
 Conc: 149.98 ng/ml



#33 AR-1260-3

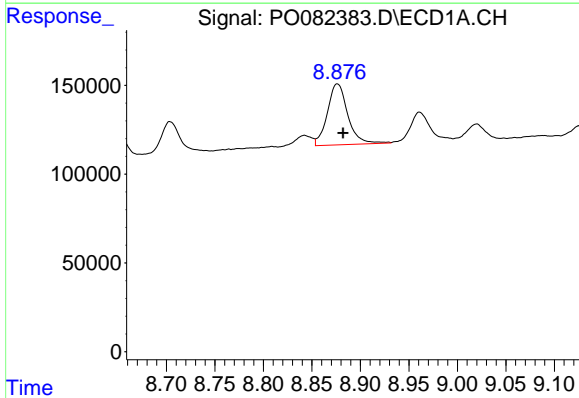
R.T.: 8.645 min
 Delta R.T.: -0.007 min
 Response: 394673
 Conc: 175.10 ng/ml

Instrument :
 ECD_O
 ClientSampleId :
 VNJ-207-ETGI-340



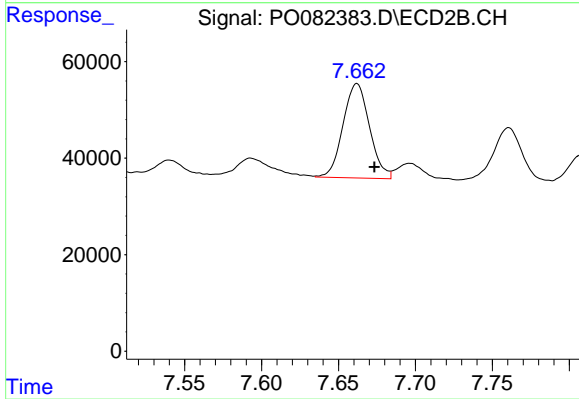
#33 AR-1260-3

R.T.: 7.177 min
 Delta R.T.: -0.011 min
 Response: 285520
 Conc: 150.72 ng/ml



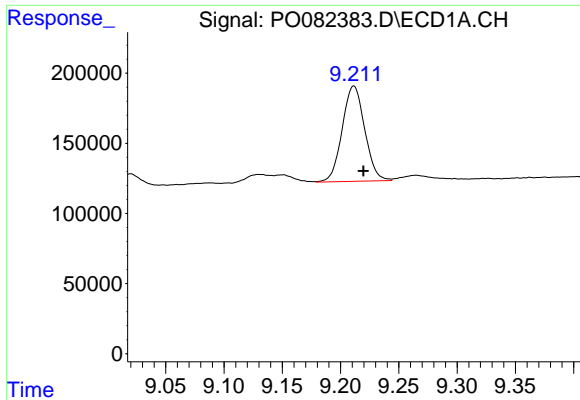
#34 AR-1260-4

R.T.: 8.876 min
 Delta R.T.: -0.006 min
 Response: 503073
 Conc: 190.03 ng/ml



#34 AR-1260-4

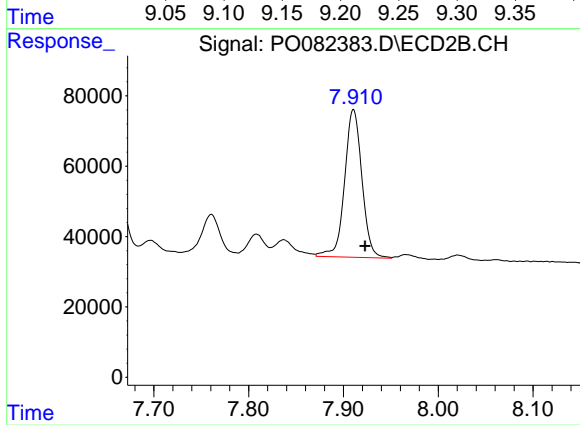
R.T.: 7.662 min
 Delta R.T.: -0.011 min
 Response: 233592
 Conc: 170.42 ng/ml



#35 AR-1260-5

R.T.: 9.211 min
Delta R.T.: -0.008 min
Response: 913300
Conc: 166.71 ng/ml

Instrument :
ECD_O
ClientSampleId :
VNJ-207-ETGI-340



#35 AR-1260-5

R.T.: 7.911 min
Delta R.T.: -0.012 min
Response: 535243
Conc: 161.99 ng/ml