

Data Path : Z:\pestpcbsrv\HPCHEM1\ECD_0\Data\PO110121\
 Data File : PO082395.D
 Signal(s) : Signal #1: ECD1A.CH Signal #2: ECD2B.CH
 Acq On : 01 Nov 2021 22:49
 Operator : AJ\MA
 Sample : I.BLK
 Misc :
 ALS Vial : 2 Sample Multiplier: 1

Instrument :
 ECD_0
 ClientSampleId :
 I.BLK

Integration File signal 1: autoint1.e
 Integration File signal 2: autoint2.e
 Quant Time: Nov 02 04:34:25 2021
 Quant Method : Z:\pestpcbsrv\HPCHEM1\ECD_0\methods\PO101821.M
 Quant Title : GC EXTRACTABLES
 QLast Update : Fri Oct 29 11:08:21 2021
 Response via : Initial Calibration
 Integrator: ChemStation 6890 Scale Mode: Small noise peaks clipped

Volume Inj. : 2 µl
 Signal #1 Phase : ZB-MR1 Signal #2 Phase: ZB-MR2
 Signal #1 Info : 30Mx0.32mmx 0.50µ Signal #2 Info : 30M x 0.32mm x 0.25µm

Compound	RT#1	RT#2	Resp#1	Resp#2	ng/ml	ng/ml

System Monitoring Compounds						
1) SA Tetrachlo...	4.974	3.970	1814459	625549	22.455	21.202
2) SA Decachlor...	11.084	9.288	1331315	577510	23.953	22.674

Target Compounds

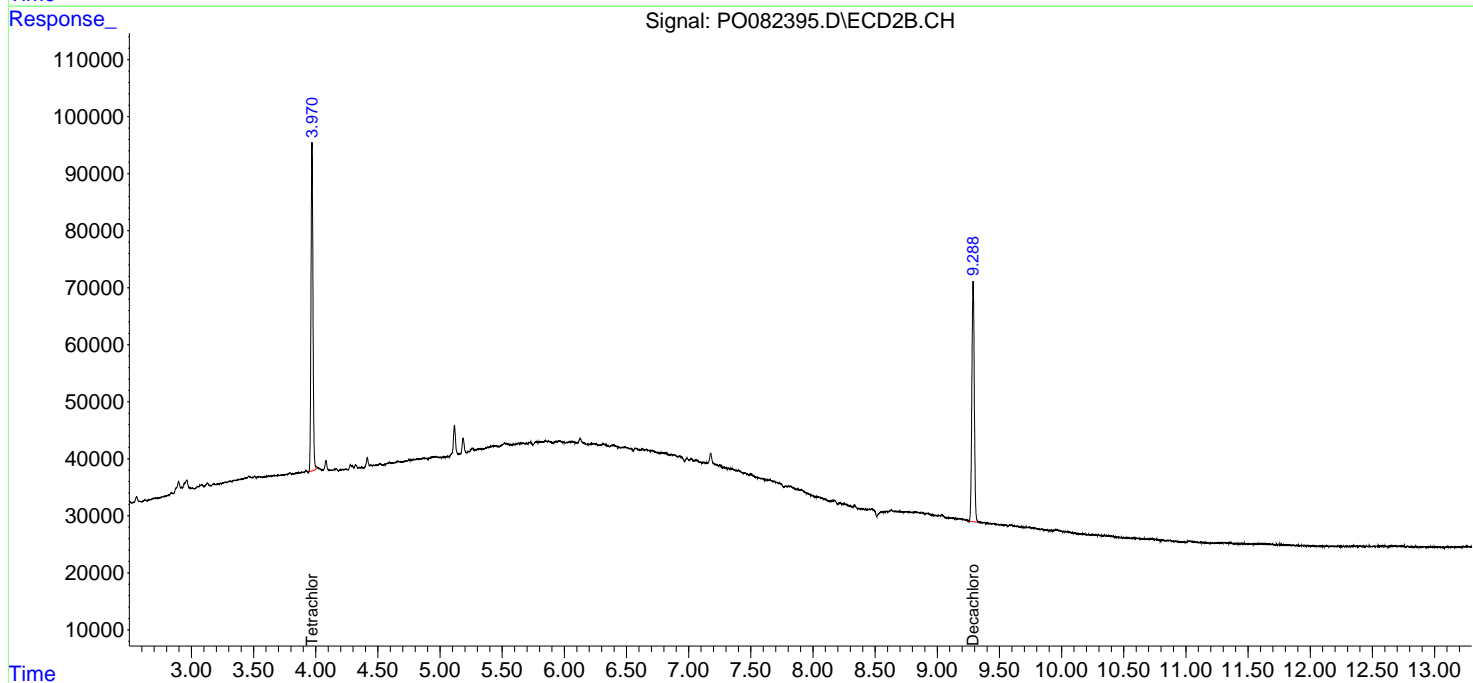
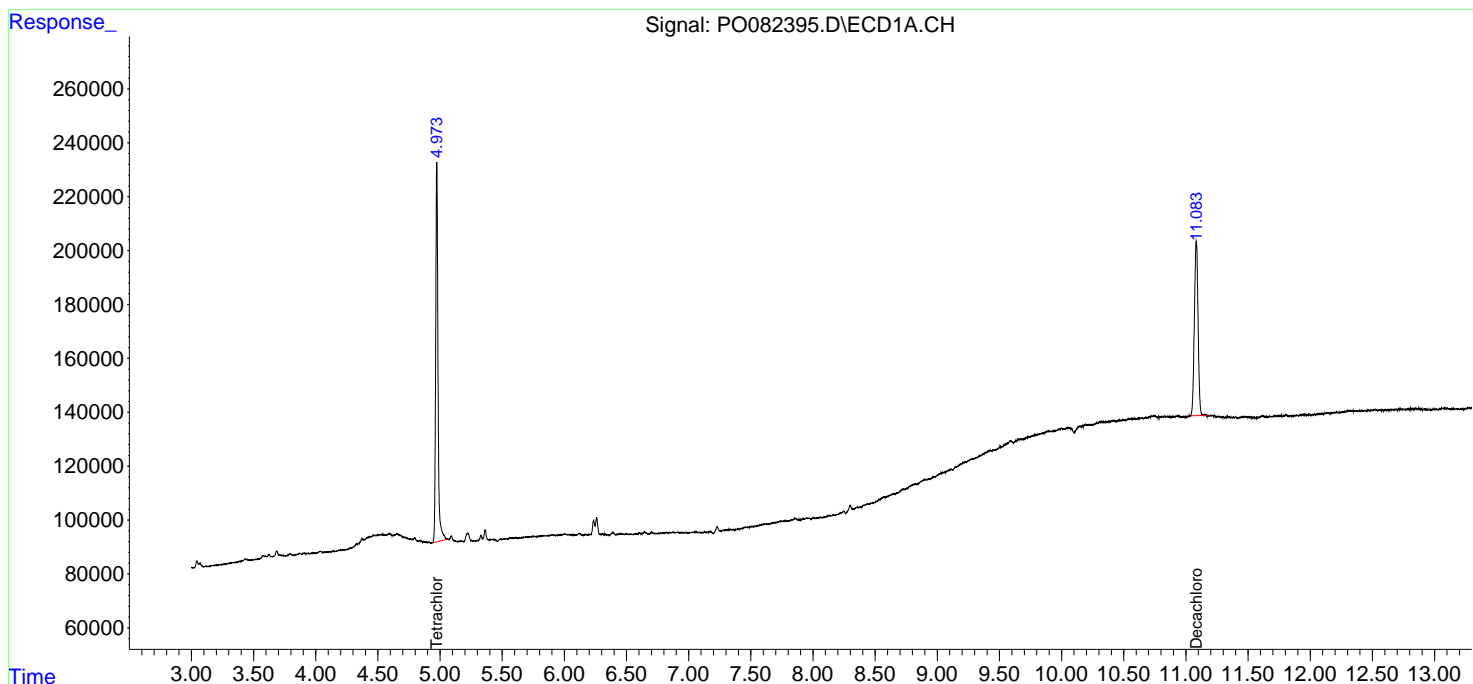
(f)=RT Delta > 1/2 Window (#)=Amounts differ by > 25% (m)=manual int.

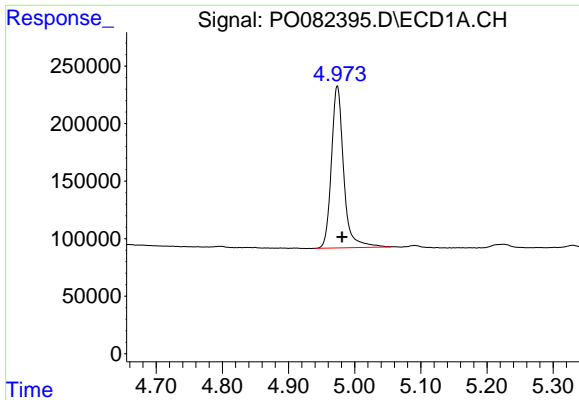
Data Path : Z:\pestpcbsrv\HPCHEM1\ECD_O\Data\PO110121\
 Data File : PO082395.D
 Signal(s) : Signal #1: ECD1A.CH Signal #2: ECD2B.CH
 Acq On : 01 Nov 2021 22:49
 Operator : AJ\MA
 Sample : I.BLK
 Misc :
 ALS Vial : 2 Sample Multiplier: 1

Instrument :
 ECD_O
 ClientSampleId :
 I.BLK

Integration File signal 1: autoint1.e
 Integration File signal 2: autoint2.e
 Quant Time: Nov 02 04:34:25 2021
 Quant Method : Z:\pestpcbsrv\HPCHEM1\ECD_O\methods\PO101821.M
 Quant Title : GC EXTRACTABLES
 QLast Update : Fri Oct 29 11:08:21 2021
 Response via : Initial Calibration
 Integrator: ChemStation 6890 Scale Mode: Small noise peaks clipped

Volume Inj. : 2 µl
 Signal #1 Phase : ZB-MR1 Signal #2 Phase: ZB-MR2
 Signal #1 Info : 30Mx0.32mmx 0.50µ Signal #2 Info : 30M x 0.32mm x 0.25µm

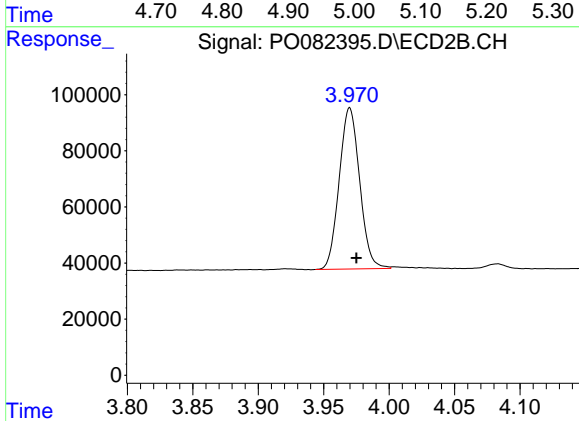




#1 Tetrachloro-m-xylene

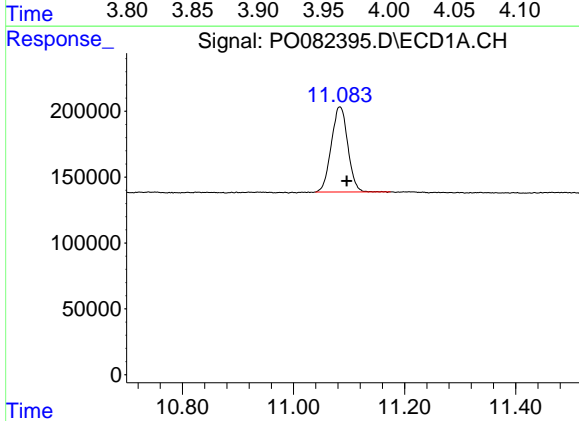
R.T.: 4.974 min
 Delta R.T.: -0.007 min
 Response: 1814459
 Conc: 22.46 ng/ml

Instrument :
 ECD_O
 ClientSampleId :
 I.BLK



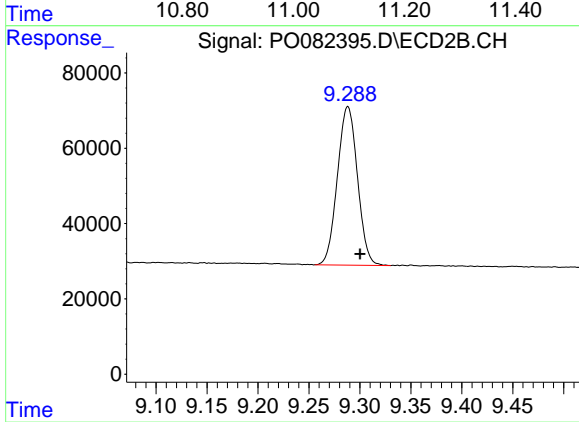
#1 Tetrachloro-m-xylene

R.T.: 3.970 min
 Delta R.T.: -0.005 min
 Response: 625549
 Conc: 21.20 ng/ml



#2 Decachlorobiphenyl

R.T.: 11.084 min
 Delta R.T.: -0.012 min
 Response: 1331315
 Conc: 23.95 ng/ml



#2 Decachlorobiphenyl

R.T.: 9.288 min
 Delta R.T.: -0.012 min
 Response: 577510
 Conc: 22.67 ng/ml