

Data Path : \\74.0.250.170\Terastorage\pestpcbsrv\HPCHEM1\ECD_0\Data\PO110218\
 Data File : P0051013.D
 Signal(s) : Signal #1: ECD1A.CH Signal #2: ECD2B.CH
 Acq On : 03 Nov 2018 6:12
 Operator : SM/SJ
 Sample : J5778-02 5X
 Misc :
 ALS Vial : 63 Sample Multiplier: 1

Instrument :
 ECD_0
 ClientSampled :
 OIL

Manual Integrations
 APPROVED

Sohil
 11/6/2018 10:10:51 AM

Integration File signal 1: autoint1.e
 Integration File signal 2: autoint2.e
 Quant Time: Nov 03 06:38:03 2018
 Quant Method : Z:\pestpcbsrv\HPCHEM1\ECD_0\methods\PO102918.M
 Quant Title : GC EXTRACTABLES
 QLast Update : Tue Oct 30 07:48:38 2018
 Response via : Initial Calibration
 Integrator: ChemStation 6890 Scale Mode: Small noise peaks clipped

Volume Inj. : 2 µl
 Signal #1 Phase : ZB-MR1 Signal #2 Phase: ZB-MR2
 Signal #1 Info : 30Mx0.32mmx 0.50µ Signal #2 Info : 30M x 0.32mm x 0.25µm

Compound	RT#1	RT#2	Resp#1	Resp#2	ng/ml	ng/ml
----------	------	------	--------	--------	-------	-------

 System Monitoring Compounds

1) SA Tetrachlo...	4.352	3.349	1328633	259193	2.658m	1.192m#
2) SA Decachlor...	10.007	8.089	1473076	1054752	4.739	4.124

Target Compounds

(f)=RT Delta > 1/2 Window (#)=Amounts differ by > 25% (m)=manual int.

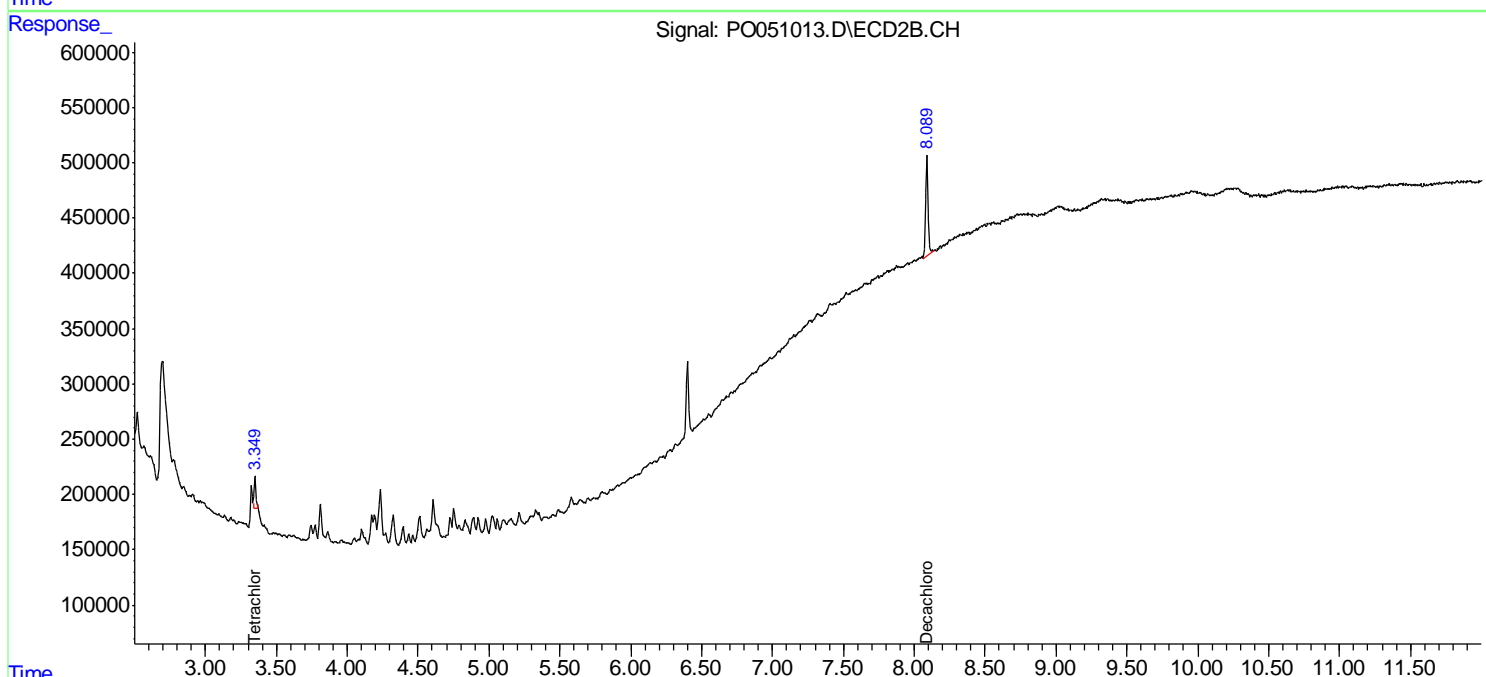
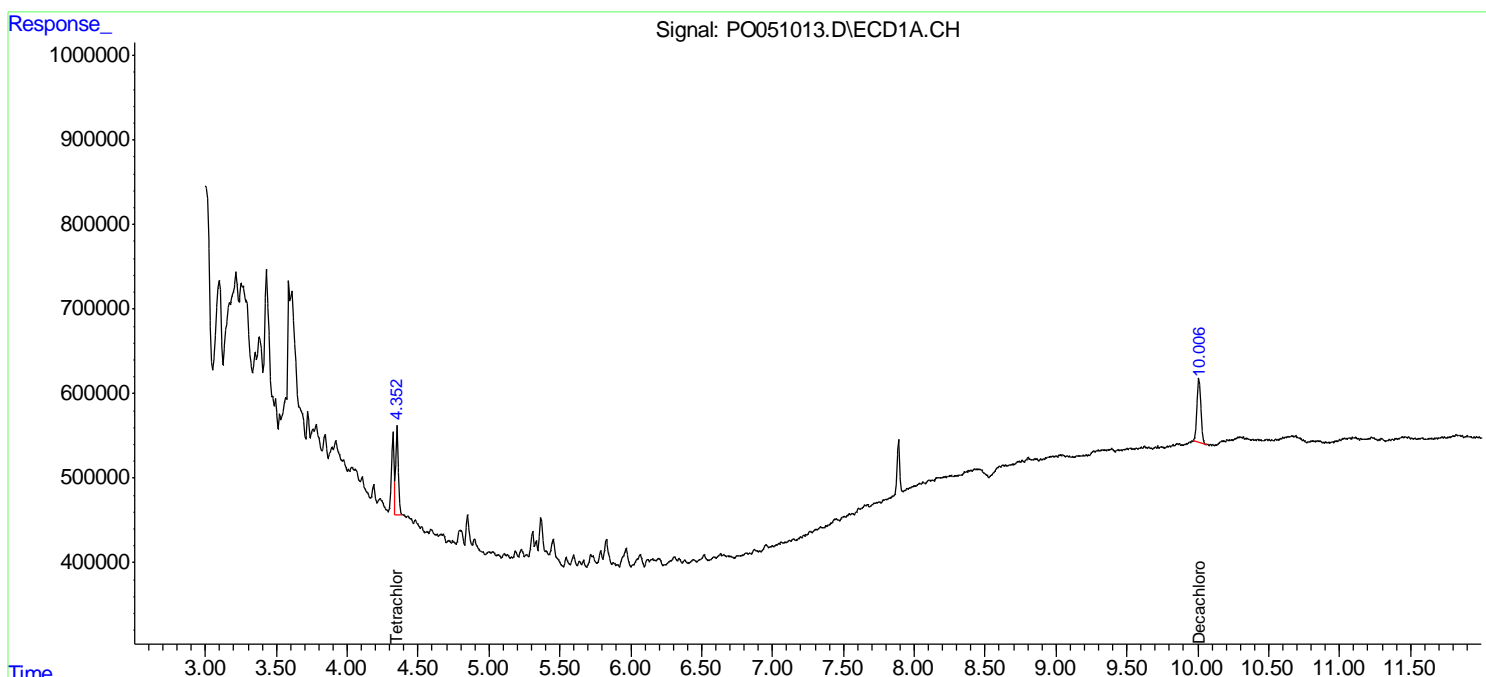
Data Path : \\74.0.250.170\Terastorage\pestpcbsrv\HPCHEM1\ECD_O\Data\PO110218\
Data File : PO051013.D
Signal(s) : Signal #1: ECD1A.CH Signal #2: ECD2B.CH
Acq On : 03 Nov 2018 6:12
Operator : SM/SJ
Sample : J5778-02 5X
Misc :
ALS Vial : 63 Sample Multiplier: 1

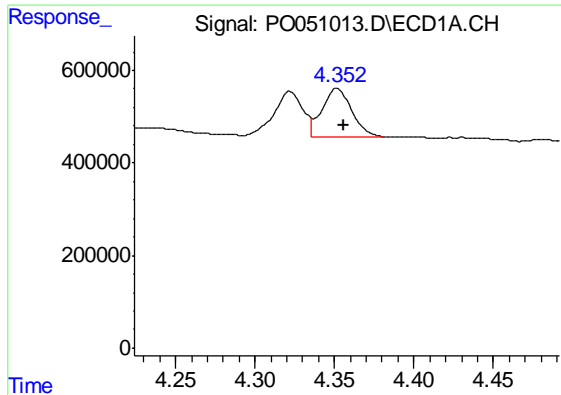
Instrument :
ECD_O
ClientSampled :
OIL

Manual Integrations
APPROVED
Sohil
11/6/2018 10:10:51 AM

Integration File signal 1: autoint1.e
Integration File signal 2: autoint2.e
Quant Time: Nov 03 06:38:03 2018
Quant Method : Z:\pestpcbsrv\HPCHEM1\ECD_O\methods\PO102918.M
Quant Title : GC EXTRACTABLES
QLast Update : Tue Oct 30 07:48:38 2018
Response via : Initial Calibration
Integrator: ChemStation 6890 Scale Mode: Small noise peaks clipped

Volume Inj. : 2 µl
Signal #1 Phase : ZB-MR1 Signal #2 Phase: ZB-MR2
Signal #1 Info : 30Mx0.32mmx 0.50µ Signal #2 Info : 30M x 0.32mm x 0.25µm





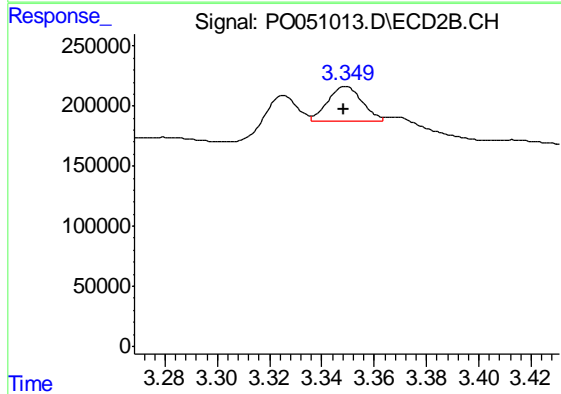
#1 Tetrachloro-m-xylene

R.T.: 4.352 min
 Delta R.T.: -0.004 min
 Response: 1328633
 Conc: 2.66 ng/ml m

Instrument :
 ECD_O
 ClientSampled :
 OIL

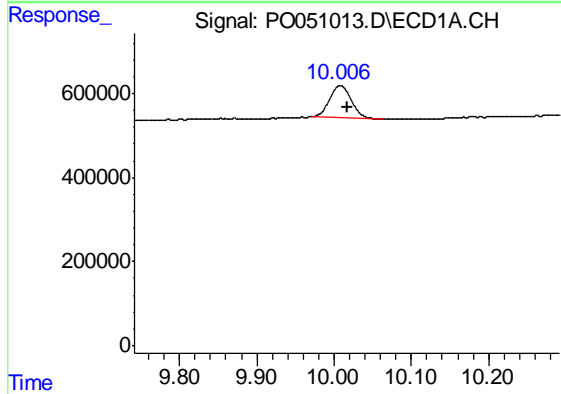
Manual Integrations
 APPROVED

Sohil
 11/6/2018 10:10:51 AM



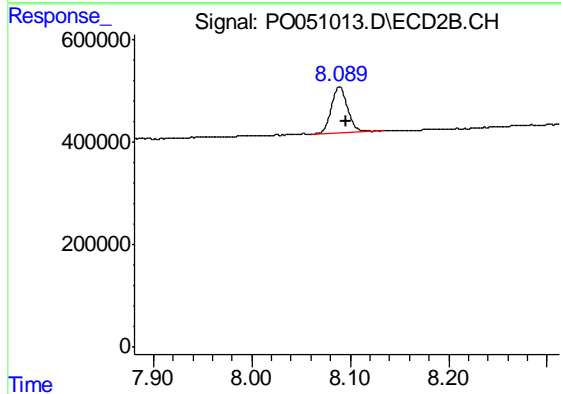
#1 Tetrachloro-m-xylene

R.T.: 3.349 min
 Delta R.T.: 0.000 min
 Response: 259193
 Conc: 1.19 ng/ml m



#2 Decachlorobiphenyl

R.T.: 10.007 min
 Delta R.T.: -0.010 min
 Response: 1473076
 Conc: 4.74 ng/ml



#2 Decachlorobiphenyl

R.T.: 8.089 min
 Delta R.T.: -0.007 min
 Response: 1054752
 Conc: 4.12 ng/ml