

Data Path : Z:\pestpcbsrv\HPCHEM1\ECD_0\Data\PO110221\
 Data File : PO082414.D
 Signal(s) : Signal #1: ECD1A.CH Signal #2: ECD2B.CH
 Acq On : 02 Nov 2021 11:47
 Operator : AJ\MA
 Sample : M4427-02
 Misc :
 ALS Vial : 9 Sample Multiplier: 1

Instrument :
 ECD_0
 ClientSampleId :
 FDR-BH-5-20211029-6.5-7

Integration File signal 1: autoint1.e
 Integration File signal 2: autoint2.e
 Quant Time: Nov 03 01:34:49 2021
 Quant Method : Z:\pestpcbsrv\HPCHEM1\ECD_0\methods\PO101821.M
 Quant Title : GC EXTRACTABLES
 QLast Update : Fri Oct 29 11:08:21 2021
 Response via : Initial Calibration
 Integrator: ChemStation 6890 Scale Mode: Small noise peaks clipped

Volume Inj. : 2 µl
 Signal #1 Phase : ZB-MR1 Signal #2 Phase: ZB-MR2
 Signal #1 Info : 30Mx0.32mmx 0.50µ Signal #2 Info : 30M x 0.32mm x 0.25µm

Compound	RT#1	RT#2	Resp#1	Resp#2	ng/ml	ng/ml
System Monitoring Compounds						
1) SA Tetrachlo...	4.975	3.973	1381858	536226	17.102	18.174
2) SA Decachlor...	11.084	9.288	1310740	473031	23.583	18.572
Target Compounds						
3) L1 AR-1016-1	0.000	5.242	0	3030	N.D.	2.499 #
4) L1 AR-1016-2	0.000	5.261	0	9609	N.D.	5.808 #
5) L1 AR-1016-3	0.000	5.465	0	6602	N.D.	7.418 #
6) L1 AR-1016-4	0.000	5.498	0	18191	N.D.	25.040 #
7) L1 AR-1016-5	6.823	5.716	24936	101779	14.612	114.220 #
9) L2 AR-1221-2	0.000	4.323	0	12573	N.D.	44.893 #
12) L3 AR-1232-2	0.000	5.261	0	9609	N.D.	13.450 #
13) L3 AR-1232-3	0.000	5.465f	0	6602	N.D.	17.419 #
14) L3 AR-1232-4	0.000	5.539	0	3597	N.D.	10.249 #
15) L3 AR-1232-5	6.605	5.716f	70912	101779	139.754	268.032 #
16) L4 AR-1242-1	0.000	5.242	0	3030	N.D.	3.310 #
17) L4 AR-1242-2	0.000	5.261	0	9609	N.D.	7.831 #
18) L4 AR-1242-3	0.000	5.465	0	6602	N.D.	9.813 #
19) L4 AR-1242-4	0.000	5.539	0	3597	N.D.	5.358 #
20) L4 AR-1242-5	7.298	6.106	38039	57223	29.908	66.597 #
21) L5 AR-1248-1	0.000	5.242	0	3030	N.D.	4.147 #
22) L5 AR-1248-2	6.605	5.498	70912	18191	36.468	18.917 #
23) L5 AR-1248-3	6.823	5.539	24936	3597	11.479	3.649 #
24) L5 AR-1248-4	7.257	5.716	68730	101779	29.132	88.545 #
25) L5 AR-1248-5	7.298	6.147	38039	12480	17.070	11.487 #
26) L6 AR-1254-1	7.225	6.106	115540	57223	48.244	34.361 #
27) L6 AR-1254-2	7.461	6.267	273365	40549	74.942	27.160 #
28) L6 AR-1254-3	7.842	6.685	247363	111043	68.355	49.588 #
29) L6 AR-1254-4	8.138	6.928	186786	49157	69.314	33.470 #
30) L6 AR-1254-5	8.570	7.358	86786	46178	29.798	22.424
31) L7 AR-1260-1	8.008	6.827	184477	50312	65.363	30.393 #
32) L7 AR-1260-2	8.275	7.026	200020	43079	60.125	21.477 #
33) L7 AR-1260-3	8.633f	7.191	21791	100640	9.668	53.124 #
34) L7 AR-1260-4	8.903f	7.661	1405938	28609	531.075	20.872 #
35) L7 AR-1260-5	9.214	7.893f	60187	30224	10.986	9.147
36) L8 AR-1262-1	8.633f	7.358	21791	46178	6.370	41.862 #
37) L8 AR-1262-2	9.214	7.893f	60187	30224	9.585	8.460
39) L8 AR-1262-4	9.632	8.258f	62316	44888	37.218	16.866 #
40) L8 AR-1262-5	0.000	8.797f	0	6577	N.D.	5.207 #
42) L9 AR-1268-2	9.632	8.258	62316	44888	8.016	10.026 #
43) L9 AR-1268-3	0.000	8.472	0	55241	N.D.	14.511 #

(f)=RT Delta > 1/2 Window (#)=Amounts differ by > 25% (m)=manual int.

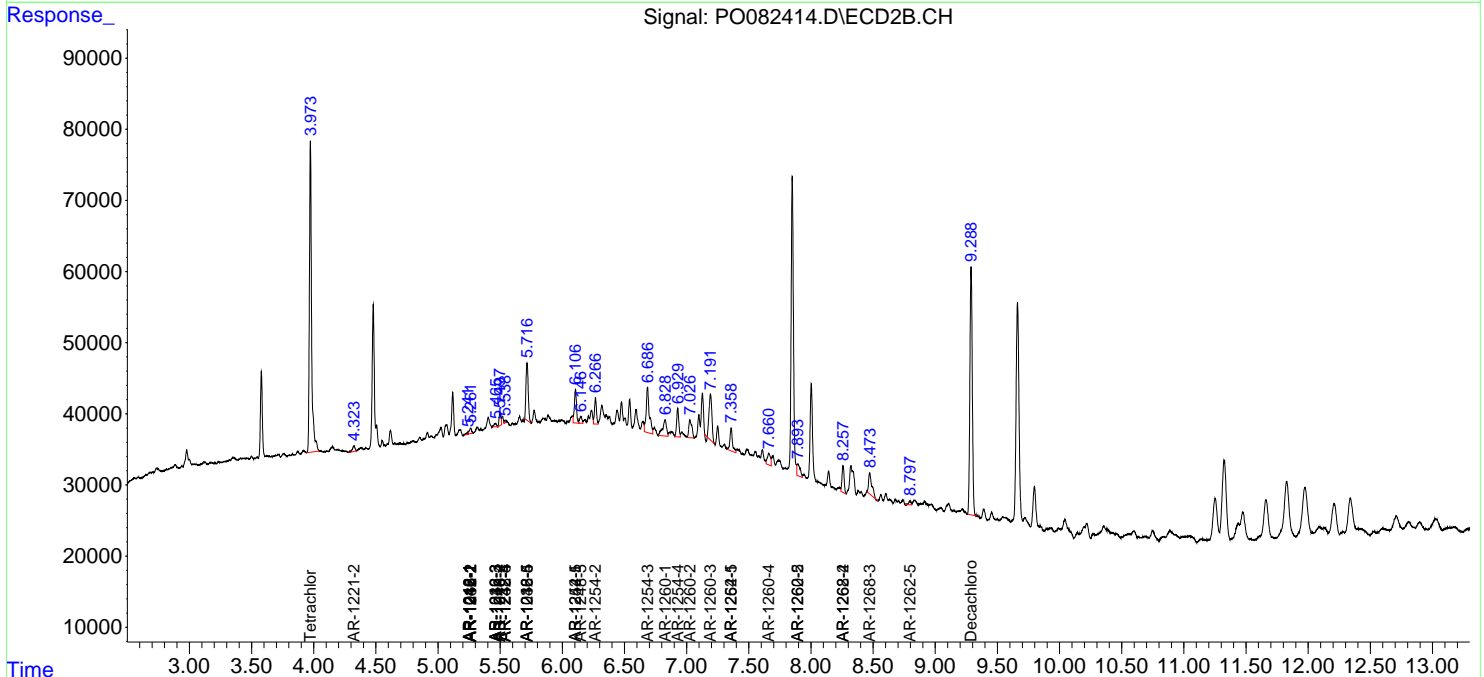
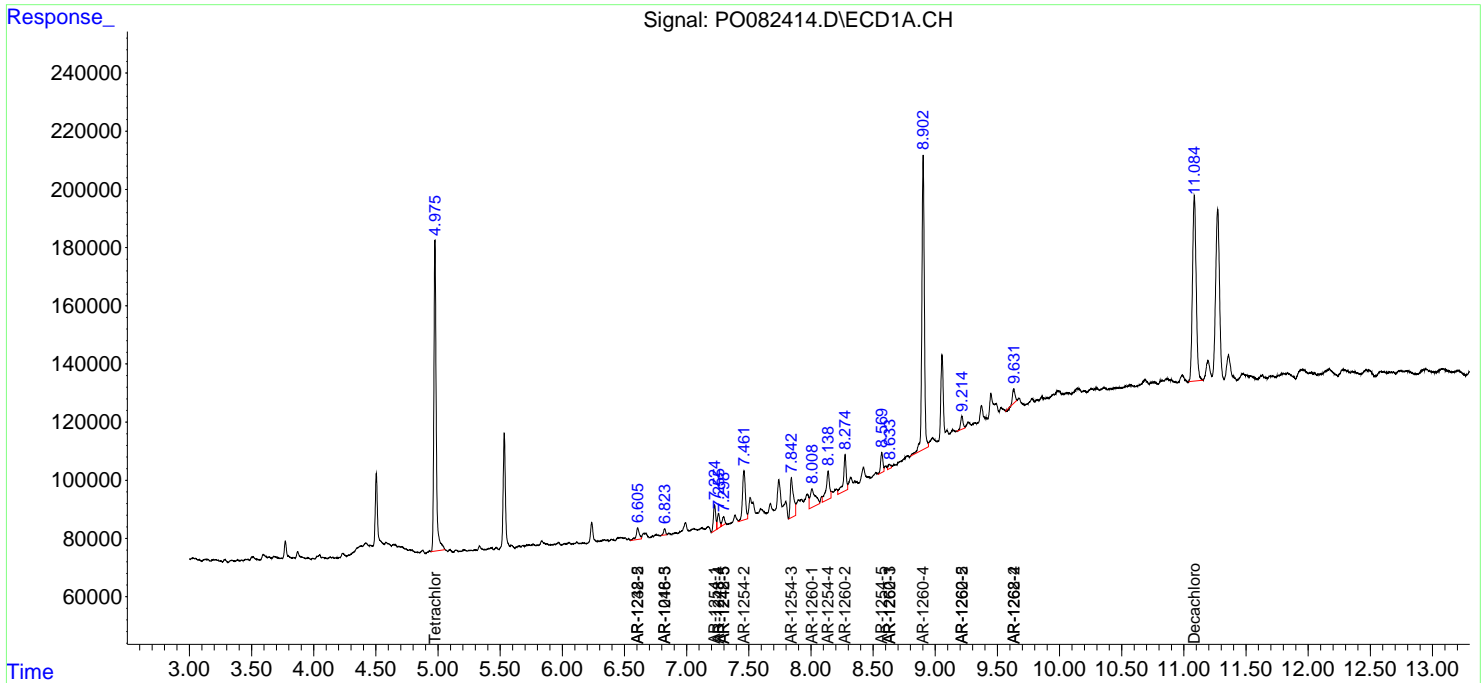
Instrument :
ECD_O
ClientSampleId :
FDR-BH-5-20211029-6.5-7

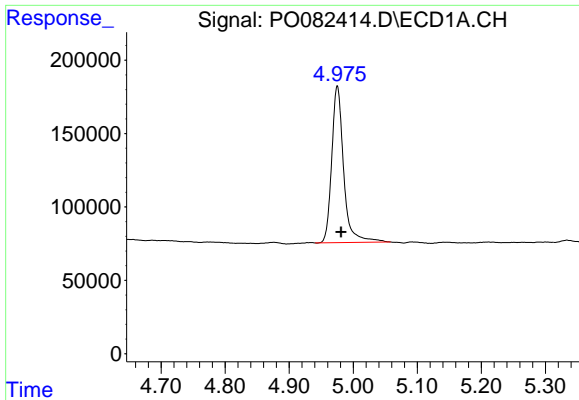
Data Path : Z:\pestpcbsrv\HPCHEM1\ECD_O\Data\PO110221\
 Data File : PO082414.D
 Signal(s) : Signal #1: ECD1A.CH Signal #2: ECD2B.CH
 Acq On : 02 Nov 2021 11:47
 Operator : AJ\MA
 Sample : M4427-02
 Misc :
 ALS Vial : 9 Sample Multiplier: 1

Instrument :
 ECD_O
 ClientSampleId :
 FDR-BH-5-20211029-6.5-7

Integration File signal 1: autoint1.e
 Integration File signal 2: autoint2.e
 Quant Time: Nov 03 01:34:49 2021
 Quant Method : Z:\pestpcbsrv\HPCHEM1\ECD_O\methods\PO101821.M
 Quant Title : GC EXTRACTABLES
 QLast Update : Fri Oct 29 11:08:21 2021
 Response via : Initial Calibration
 Integrator: ChemStation 6890 Scale Mode: Small noise peaks clipped

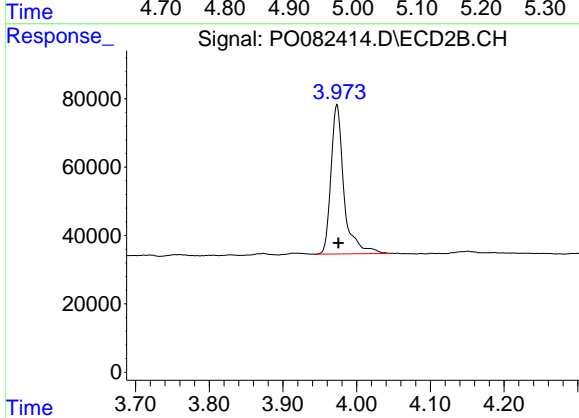
Volume Inj. : 2 µl
 Signal #1 Phase : ZB-MR1 Signal #2 Phase: ZB-MR2
 Signal #1 Info : 30Mx0.32mmx 0.50µ Signal #2 Info : 30M x 0.32mm x 0.25µm



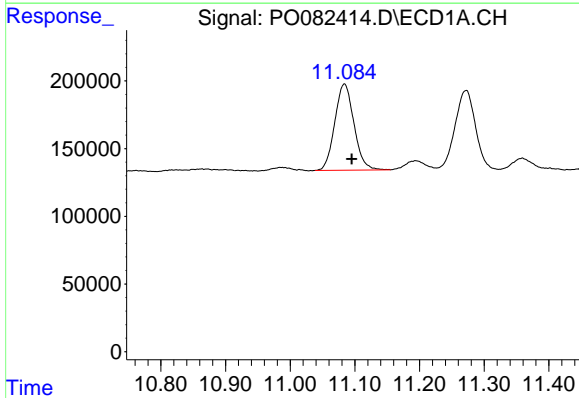


#1 Tetrachloro-m-xylene
 R.T.: 4.975 min
 Delta R.T.: -0.006 min
 Response: 1381858
 Conc: 17.10 ng/ml

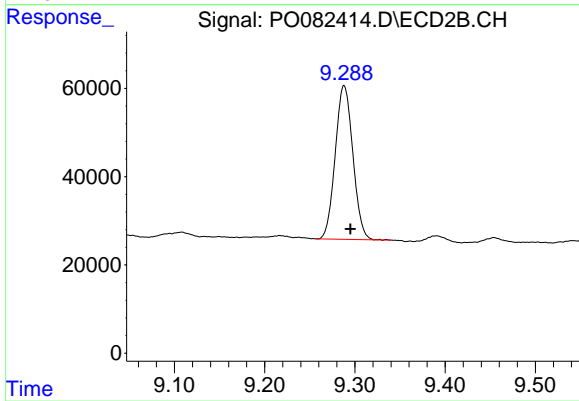
Instrument :
 ECD_O
 ClientSampleId :
 FDR-BH-5-20211029-6.5-7



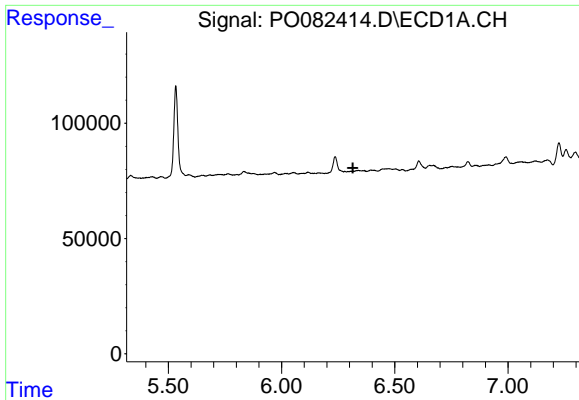
#1 Tetrachloro-m-xylene
 R.T.: 3.973 min
 Delta R.T.: -0.002 min
 Response: 536226
 Conc: 18.17 ng/ml



#2 Decachlorobiphenyl
 R.T.: 11.084 min
 Delta R.T.: -0.011 min
 Response: 1310740
 Conc: 23.58 ng/ml



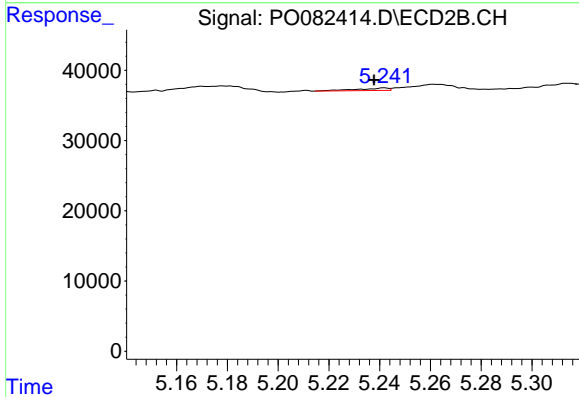
#2 Decachlorobiphenyl
 R.T.: 9.288 min
 Delta R.T.: -0.007 min
 Response: 473031
 Conc: 18.57 ng/ml



#3 AR-1016-1

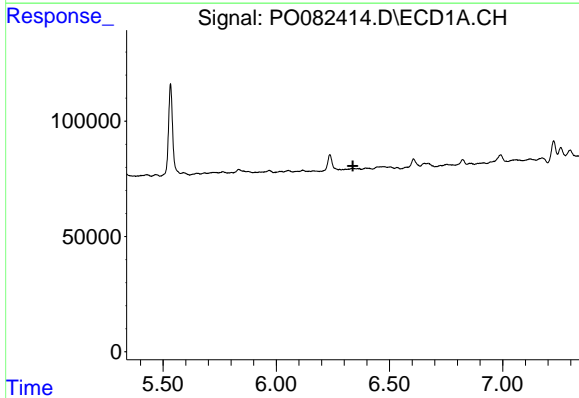
R.T.: 0.000 min
 Exp R.T.: 6.315 min
 Response: 0
 Conc: N.D.

Instrument :
 ECD_O
 ClientSampleId :
 FDR-BH-5-20211029-6.5-7



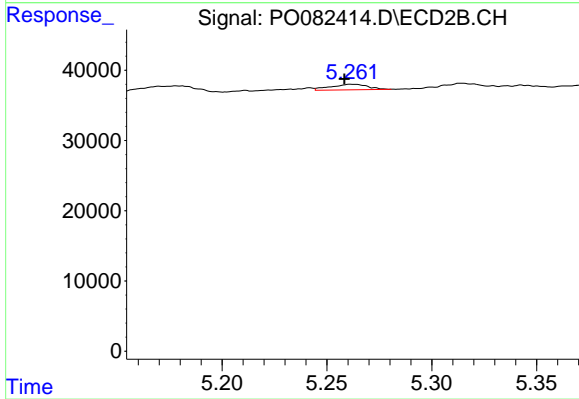
#3 AR-1016-1

R.T.: 5.242 min
 Delta R.T.: 0.004 min
 Response: 3030
 Conc: 2.50 ng/ml



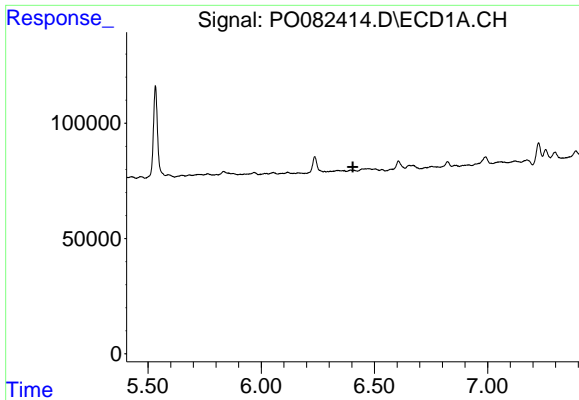
#4 AR-1016-2

R.T.: 0.000 min
 Exp R.T.: 6.338 min
 Response: 0
 Conc: N.D.



#4 AR-1016-2

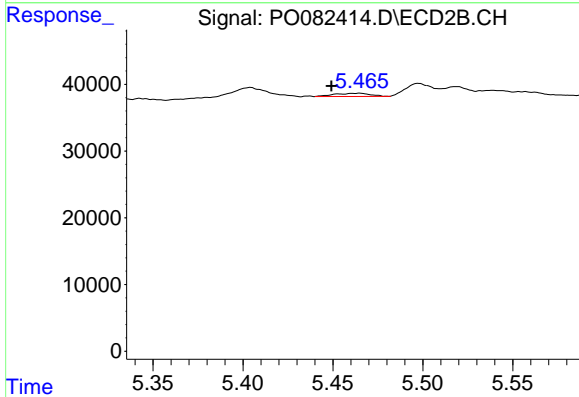
R.T.: 5.261 min
 Delta R.T.: 0.003 min
 Response: 9609
 Conc: 5.81 ng/ml



#5 AR-1016-3

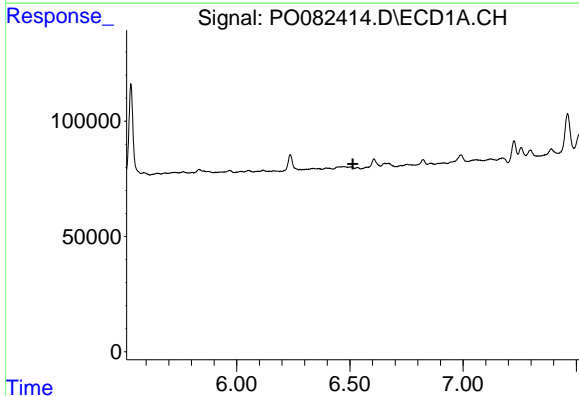
R.T.: 0.000 min
 Exp R.T.: 6.405 min
 Response: 0
 Conc: N.D.

Instrument :
 ECD_O
 ClientSampleId :
 FDR-BH-5-20211029-6.5-7



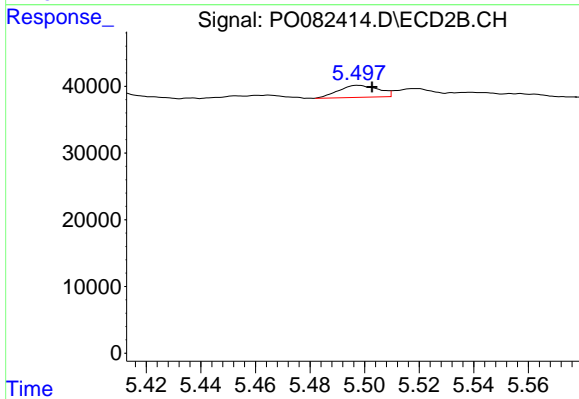
#5 AR-1016-3

R.T.: 5.465 min
 Delta R.T.: 0.016 min
 Response: 6602
 Conc: 7.42 ng/ml



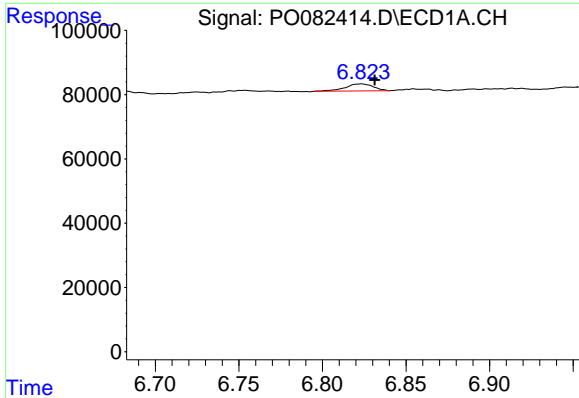
#6 AR-1016-4

R.T.: 0.000 min
 Exp R.T.: 6.513 min
 Response: 0
 Conc: N.D.



#6 AR-1016-4

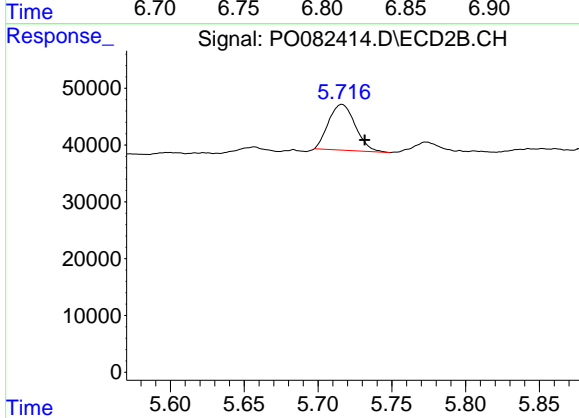
R.T.: 5.498 min
 Delta R.T.: -0.005 min
 Response: 18191
 Conc: 25.04 ng/ml



#7 AR-1016-5

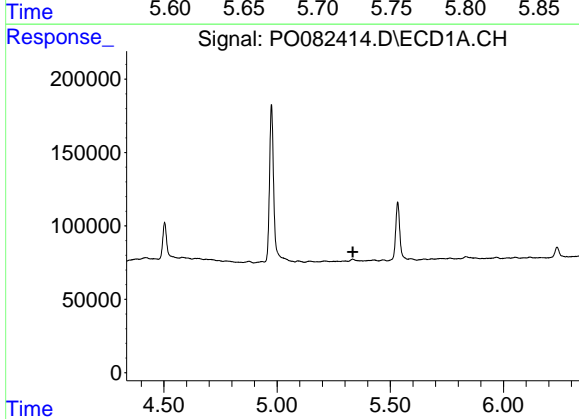
R.T.: 6.823 min
 Delta R.T.: -0.008 min
 Response: 24936
 Conc: 14.61 ng/ml

Instrument :
 ECD_O
 ClientSampleId :
 FDR-BH-5-20211029-6.5-7



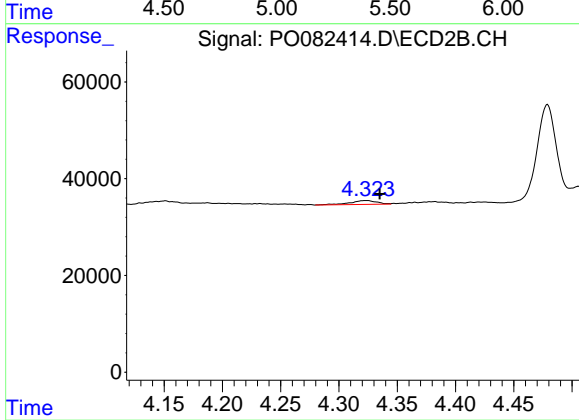
#7 AR-1016-5

R.T.: 5.716 min
 Delta R.T.: -0.016 min
 Response: 101779
 Conc: 114.22 ng/ml



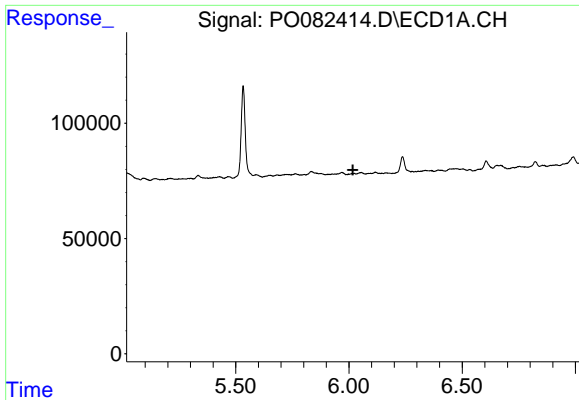
#9 AR-1221-2

R.T.: 0.000 min
 Exp R.T. : 5.335 min
 Response: 0
 Conc: N.D.



#9 AR-1221-2

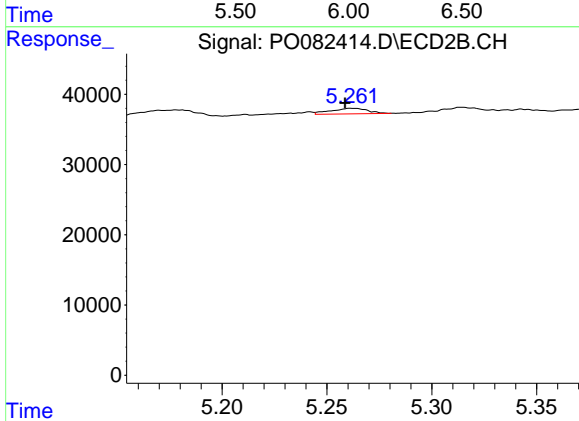
R.T.: 4.323 min
 Delta R.T.: -0.012 min
 Response: 12573
 Conc: 44.89 ng/ml



#12 AR-1232-2

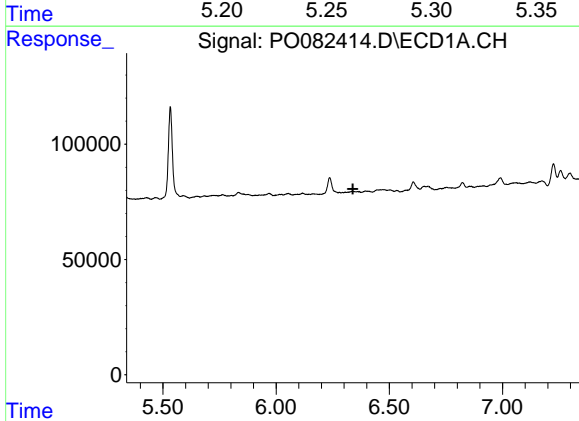
R.T.: 0.000 min
 Exp R.T. : 6.018 min
 Response: 0
 Conc: N.D.

Instrument :
 ECD_O
 ClientSampleId :
 FDR-BH-5-20211029-6.5-7



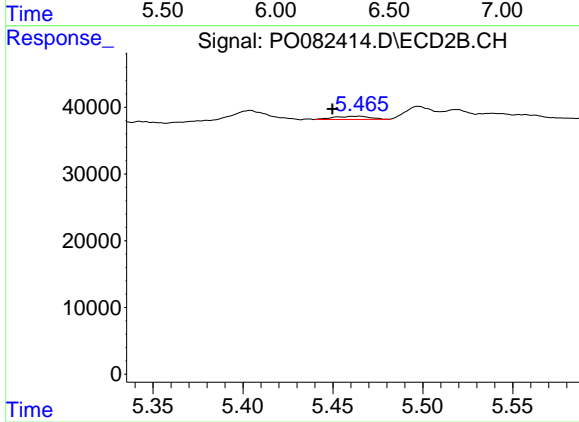
#12 AR-1232-2

R.T.: 5.261 min
 Delta R.T.: 0.003 min
 Response: 9609
 Conc: 13.45 ng/ml



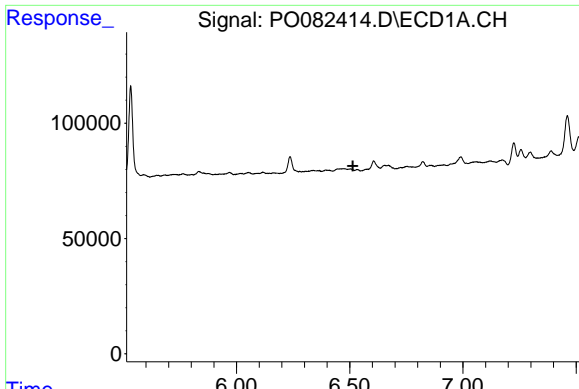
#13 AR-1232-3

R.T.: 0.000 min
 Exp R.T. : 6.339 min
 Response: 0
 Conc: N.D.



#13 AR-1232-3

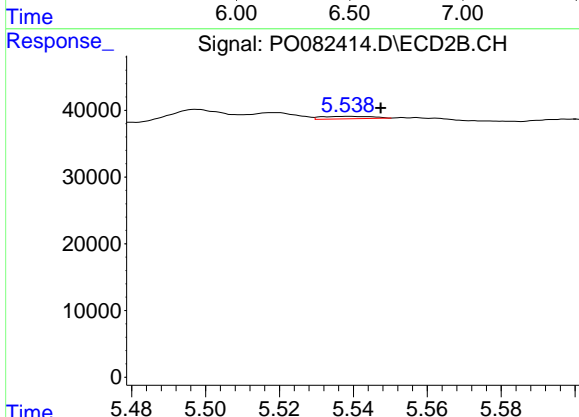
R.T.: 5.465 min
 Delta R.T.: 0.015 min
 Response: 6602
 Conc: 17.42 ng/ml



#14 AR-1232-4

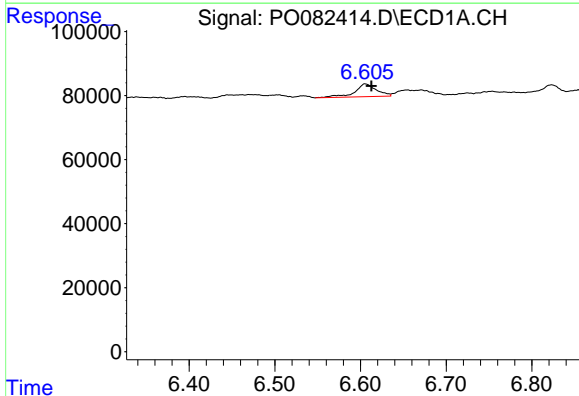
R.T.: 0.000 min
 Exp R.T.: 6.514 min
 Response: 0
 Conc: N.D.

Instrument : ECD_O
 ClientSampleId : FDR-BH-5-20211029-6.5-7



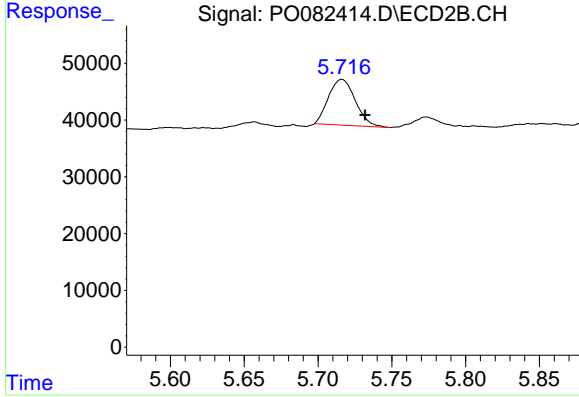
#14 AR-1232-4

R.T.: 5.539 min
 Delta R.T.: -0.009 min
 Response: 3597
 Conc: 10.25 ng/ml



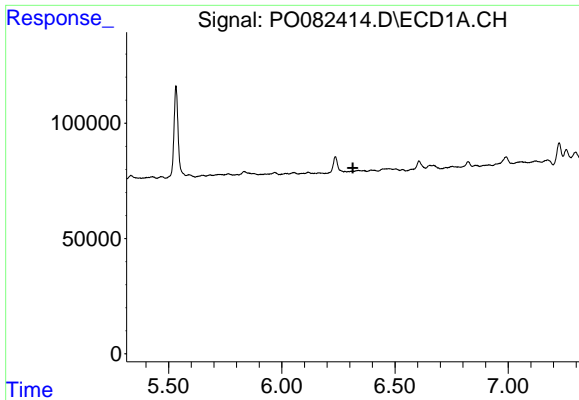
#15 AR-1232-5

R.T.: 6.605 min
 Delta R.T.: -0.007 min
 Response: 70912
 Conc: 139.75 ng/ml



#15 AR-1232-5

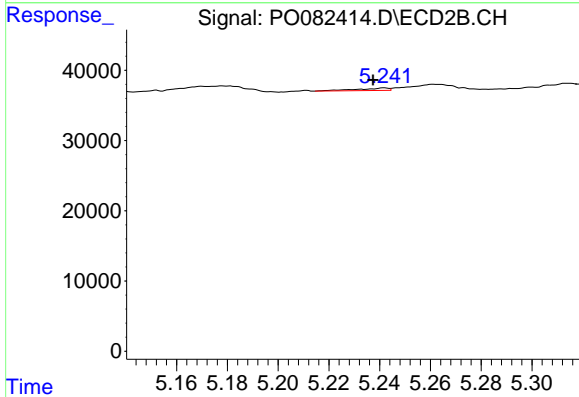
R.T.: 5.716 min
 Delta R.T.: -0.016 min
 Response: 101779
 Conc: 268.03 ng/ml



#16 AR-1242-1

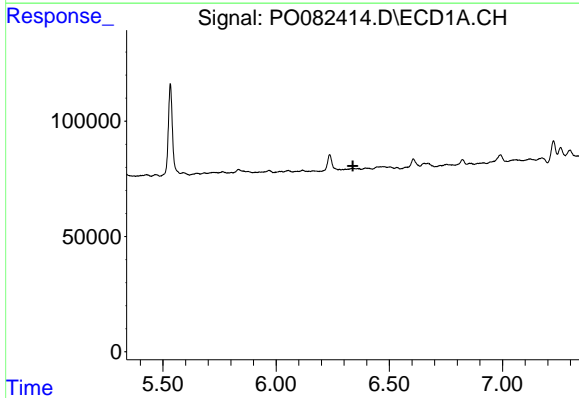
R.T.: 0.000 min
 Exp R.T.: 6.314 min
 Response: 0
 Conc: N.D.

Instrument :
 ECD_O
 ClientSampleId :
 FDR-BH-5-20211029-6.5-7



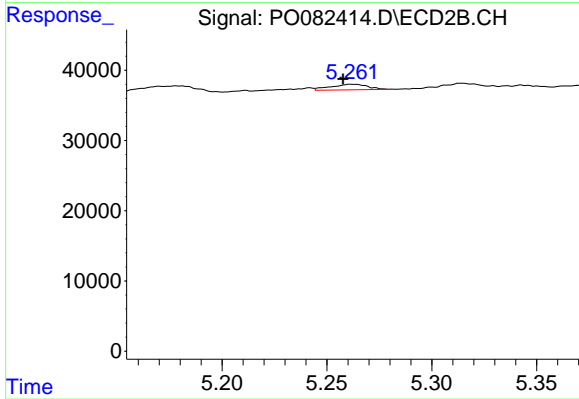
#16 AR-1242-1

R.T.: 5.242 min
 Delta R.T.: 0.004 min
 Response: 3030
 Conc: 3.31 ng/ml



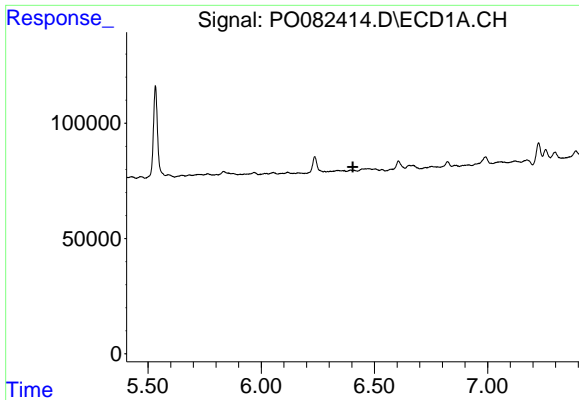
#17 AR-1242-2

R.T.: 0.000 min
 Exp R.T.: 6.339 min
 Response: 0
 Conc: N.D.



#17 AR-1242-2

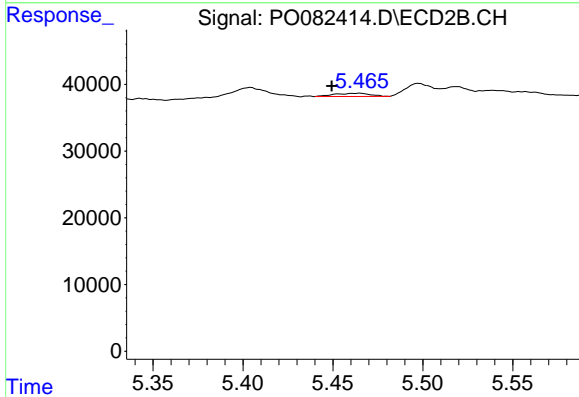
R.T.: 5.261 min
 Delta R.T.: 0.004 min
 Response: 9609
 Conc: 7.83 ng/ml



#18 AR-1242-3

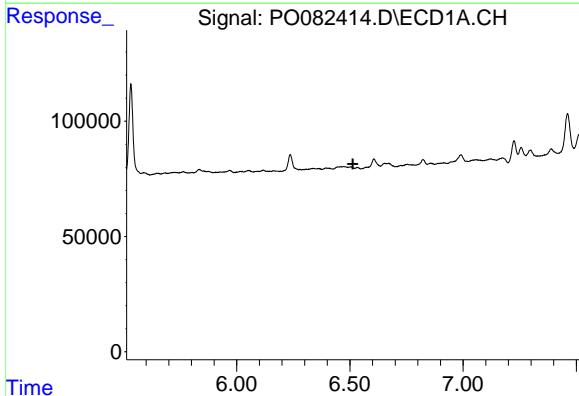
R.T.: 0.000 min
 Exp R.T. : 6.405 min
 Response: 0
 Conc: N.D.

Instrument :
 ECD_O
 ClientSampleId :
 FDR-BH-5-20211029-6.5-7



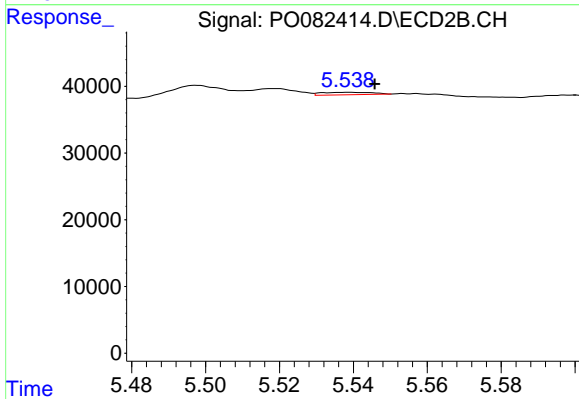
#18 AR-1242-3

R.T.: 5.465 min
 Delta R.T.: 0.016 min
 Response: 6602
 Conc: 9.81 ng/ml



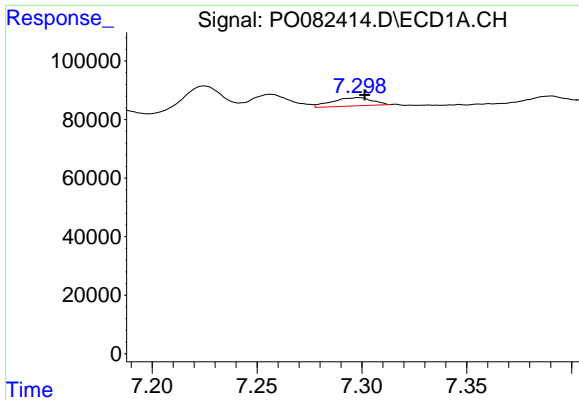
#19 AR-1242-4

R.T.: 0.000 min
 Exp R.T. : 6.513 min
 Response: 0
 Conc: N.D.



#19 AR-1242-4

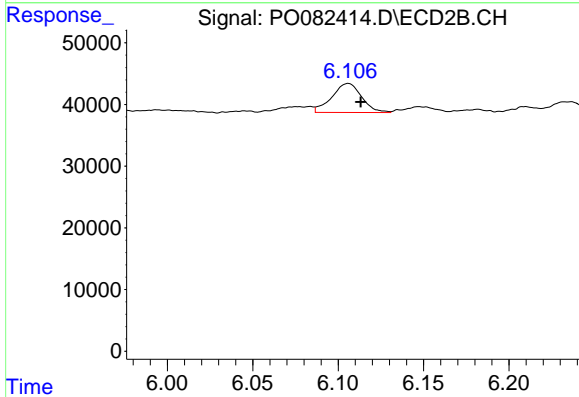
R.T.: 5.539 min
 Delta R.T.: -0.007 min
 Response: 3597
 Conc: 5.36 ng/ml



#20 AR-1242-5

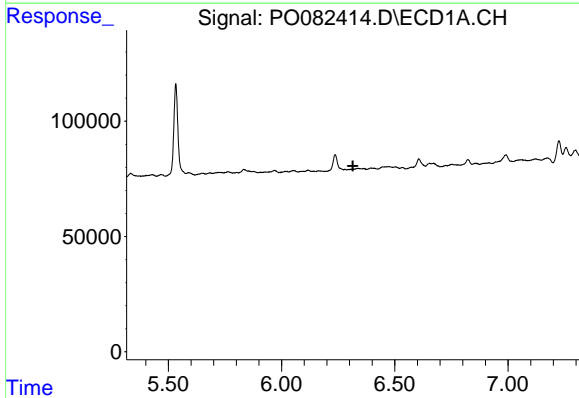
R.T.: 7.298 min
 Delta R.T.: -0.003 min
 Response: 38039
 Conc: 29.91 ng/ml

Instrument :
 ECD_O
 ClientSampleId :
 FDR-BH-5-20211029-6.5-7



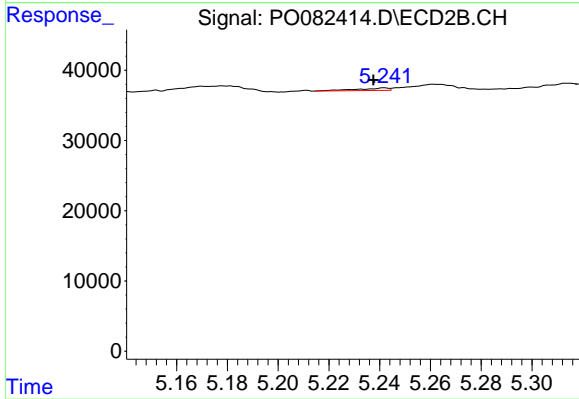
#20 AR-1242-5

R.T.: 6.106 min
 Delta R.T.: -0.007 min
 Response: 57223
 Conc: 66.60 ng/ml



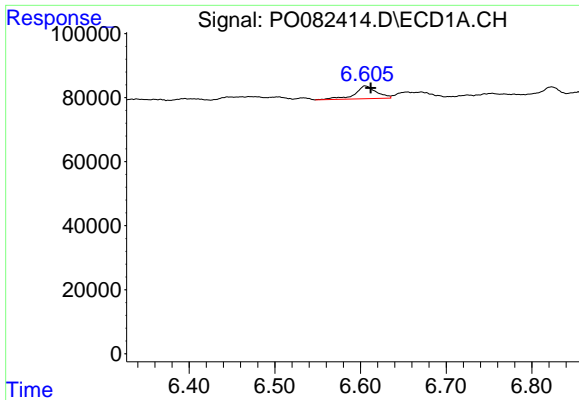
#21 AR-1248-1

R.T.: 0.000 min
 Exp R.T. : 6.315 min
 Response: 0
 Conc: N.D.



#21 AR-1248-1

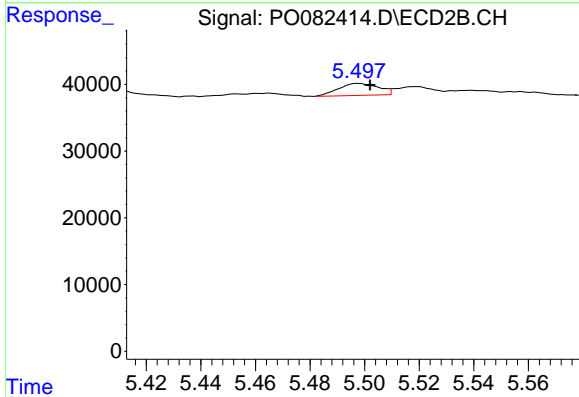
R.T.: 5.242 min
 Delta R.T.: 0.004 min
 Response: 3030
 Conc: 4.15 ng/ml



#22 AR-1248-2

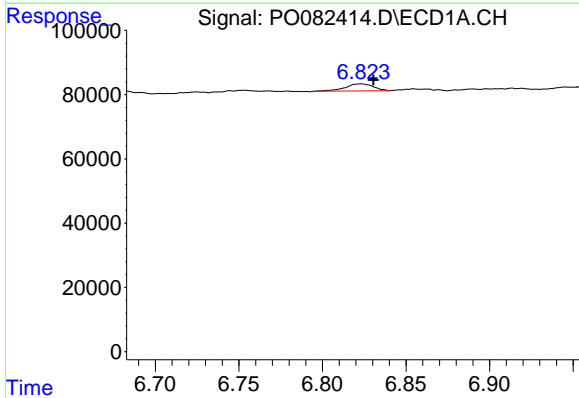
R.T.: 6.605 min
 Delta R.T.: -0.007 min
 Response: 70912
 Conc: 36.47 ng/ml

Instrument :
 ECD_O
 ClientSampleId :
 FDR-BH-5-20211029-6.5-7



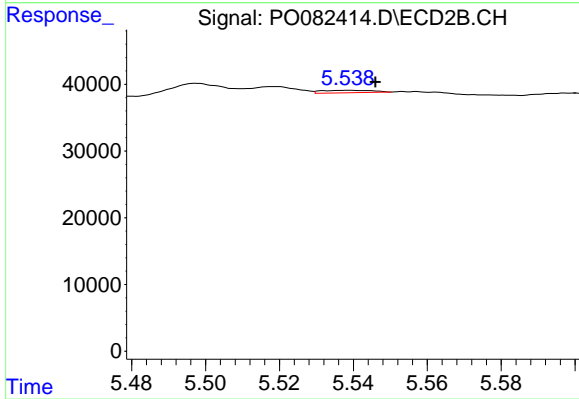
#22 AR-1248-2

R.T.: 5.498 min
 Delta R.T.: -0.004 min
 Response: 18191
 Conc: 18.92 ng/ml



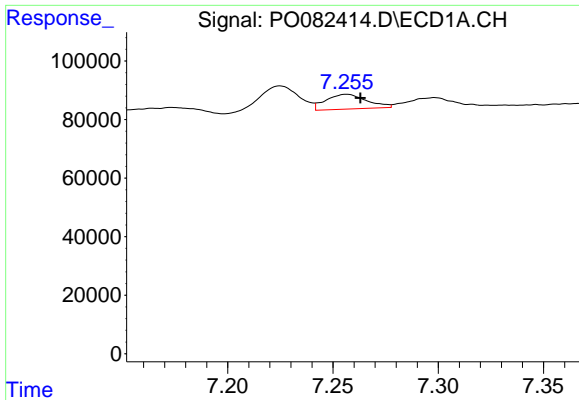
#23 AR-1248-3

R.T.: 6.823 min
 Delta R.T.: -0.007 min
 Response: 24936
 Conc: 11.48 ng/ml



#23 AR-1248-3

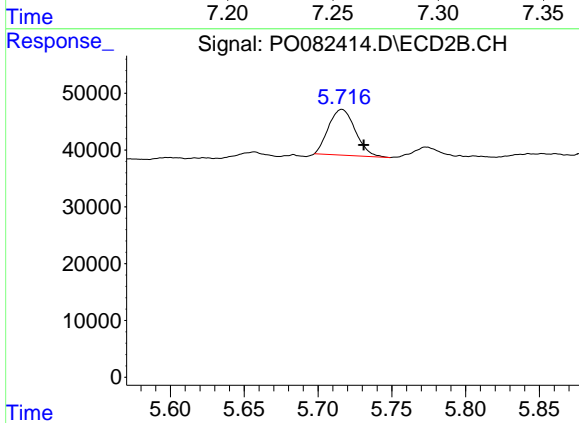
R.T.: 5.539 min
 Delta R.T.: -0.007 min
 Response: 3597
 Conc: 3.65 ng/ml



#24 AR-1248-4

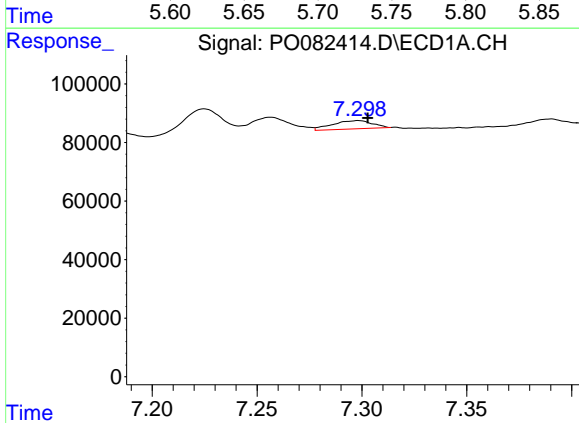
R.T.: 7.257 min
 Delta R.T.: -0.007 min
 Response: 68730
 Conc: 29.13 ng/ml

Instrument :
 ECD_O
 ClientSampleId :
 FDR-BH-5-20211029-6.5-7



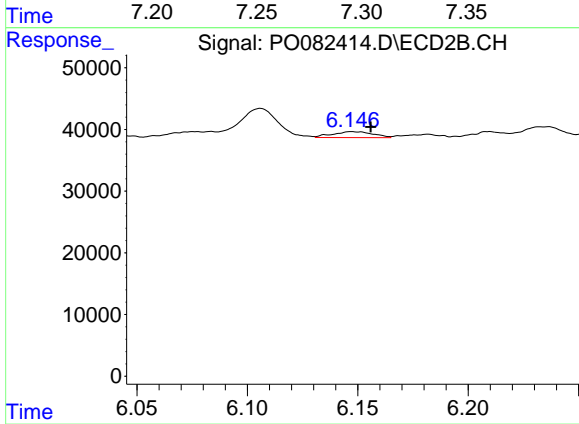
#24 AR-1248-4

R.T.: 5.716 min
 Delta R.T.: -0.015 min
 Response: 101779
 Conc: 88.54 ng/ml



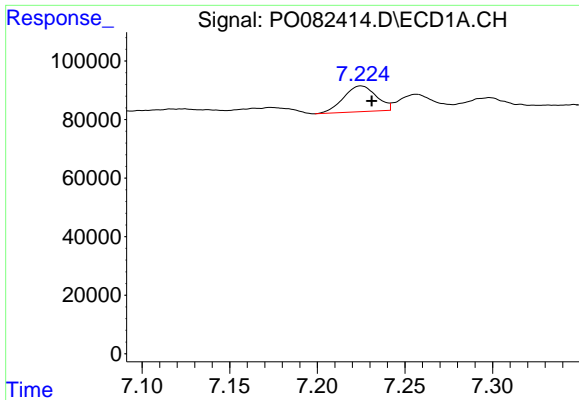
#25 AR-1248-5

R.T.: 7.298 min
 Delta R.T.: -0.004 min
 Response: 38039
 Conc: 17.07 ng/ml



#25 AR-1248-5

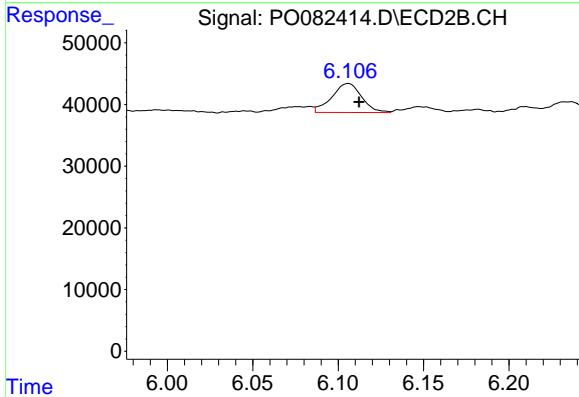
R.T.: 6.147 min
 Delta R.T.: -0.009 min
 Response: 12480
 Conc: 11.49 ng/ml



#26 AR-1254-1

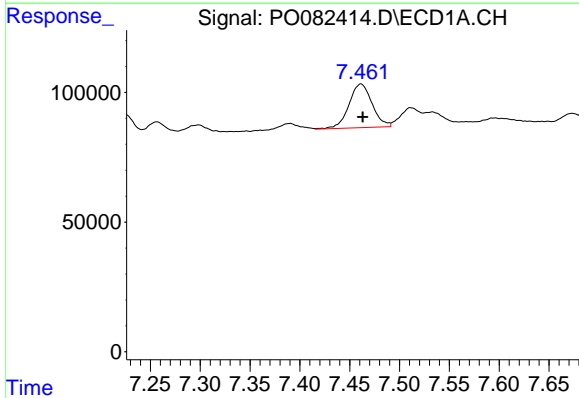
R.T.: 7.225 min
 Delta R.T.: -0.006 min
 Response: 115540
 Conc: 48.24 ng/ml

Instrument :
 ECD_O
 ClientSampleId :
 FDR-BH-5-20211029-6.5-7



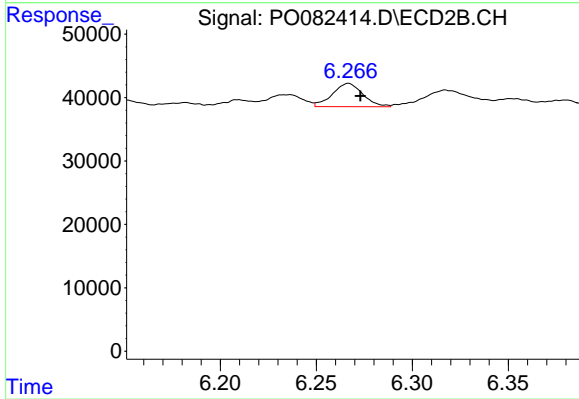
#26 AR-1254-1

R.T.: 6.106 min
 Delta R.T.: -0.006 min
 Response: 57223
 Conc: 34.36 ng/ml



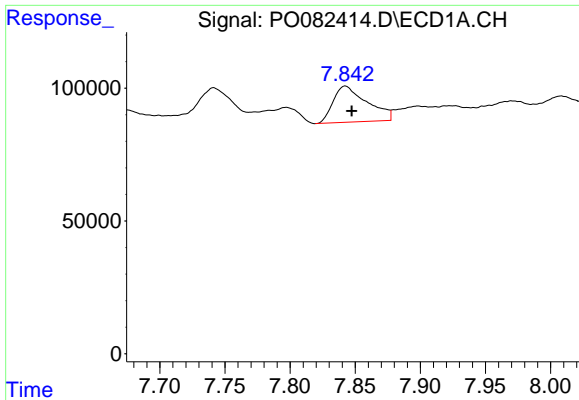
#27 AR-1254-2

R.T.: 7.461 min
 Delta R.T.: -0.002 min
 Response: 273365
 Conc: 74.94 ng/ml



#27 AR-1254-2

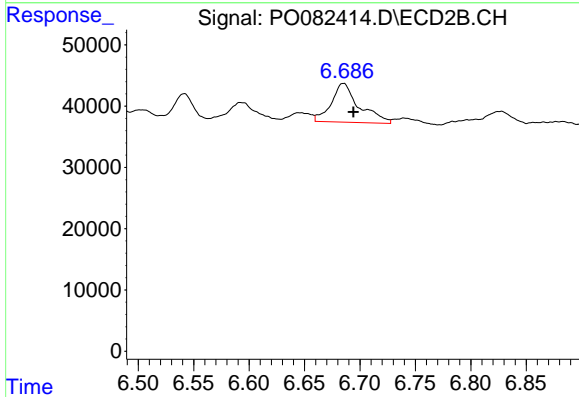
R.T.: 6.267 min
 Delta R.T.: -0.006 min
 Response: 40549
 Conc: 27.16 ng/ml



#28 AR-1254-3

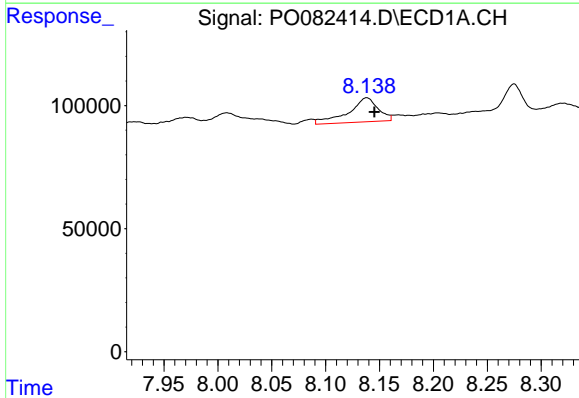
R.T.: 7.842 min
 Delta R.T.: -0.005 min
 Response: 247363
 Conc: 68.35 ng/ml

Instrument :
 ECD_O
 ClientSampleId :
 FDR-BH-5-20211029-6.5-7



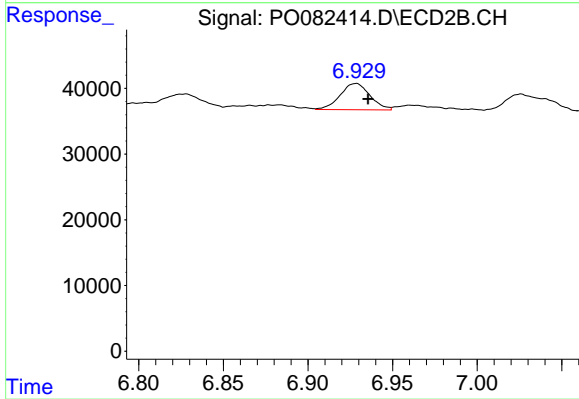
#28 AR-1254-3

R.T.: 6.685 min
 Delta R.T.: -0.009 min
 Response: 111043
 Conc: 49.59 ng/ml



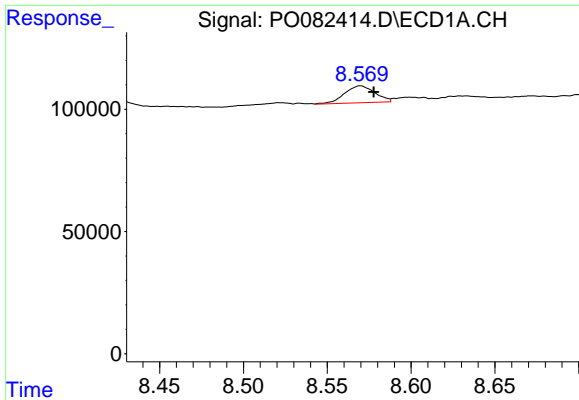
#29 AR-1254-4

R.T.: 8.138 min
 Delta R.T.: -0.007 min
 Response: 186786
 Conc: 69.31 ng/ml



#29 AR-1254-4

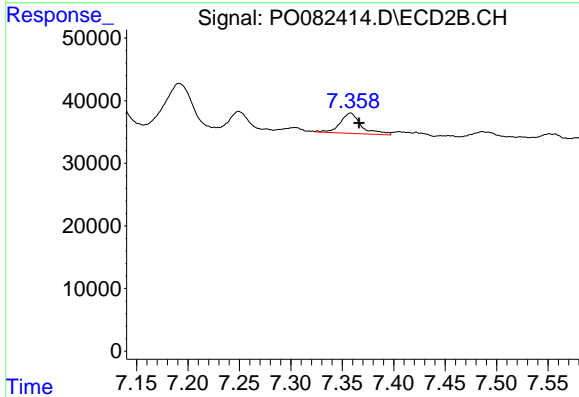
R.T.: 6.928 min
 Delta R.T.: -0.007 min
 Response: 49157
 Conc: 33.47 ng/ml



#30 AR-1254-5

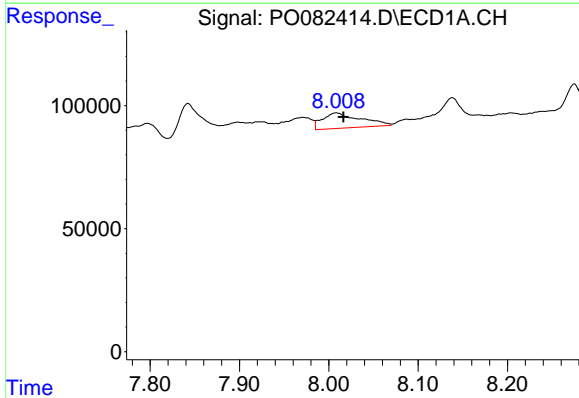
R.T.: 8.570 min
 Delta R.T.: -0.008 min
 Response: 86786
 Conc: 29.80 ng/ml

Instrument :
 ECD_O
 ClientSampleId :
 FDR-BH-5-20211029-6.5-7



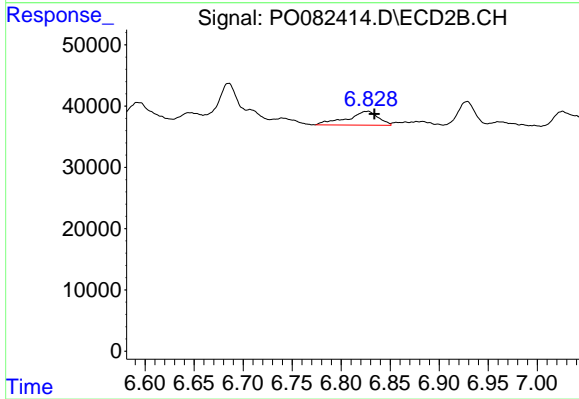
#30 AR-1254-5

R.T.: 7.358 min
 Delta R.T.: -0.008 min
 Response: 46178
 Conc: 22.42 ng/ml



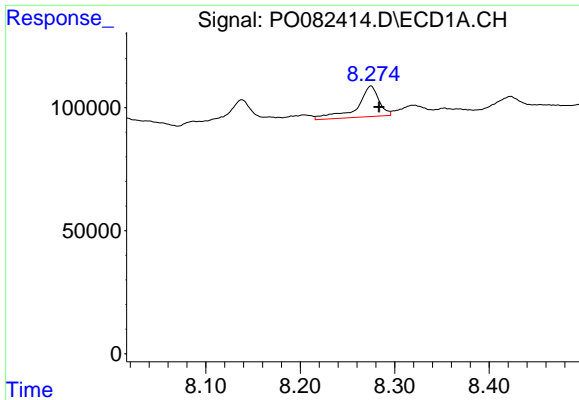
#31 AR-1260-1

R.T.: 8.008 min
 Delta R.T.: -0.008 min
 Response: 184477
 Conc: 65.36 ng/ml



#31 AR-1260-1

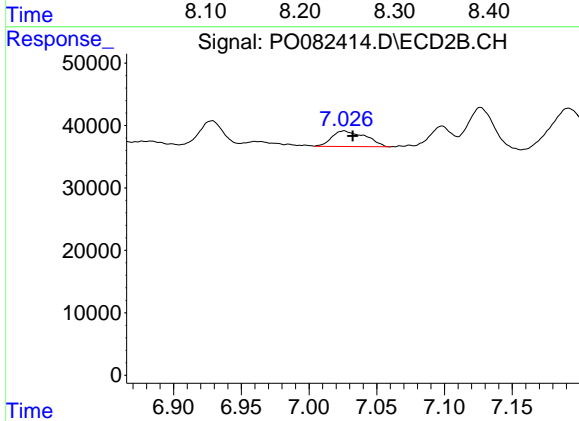
R.T.: 6.827 min
 Delta R.T.: -0.007 min
 Response: 50312
 Conc: 30.39 ng/ml



#32 AR-1260-2

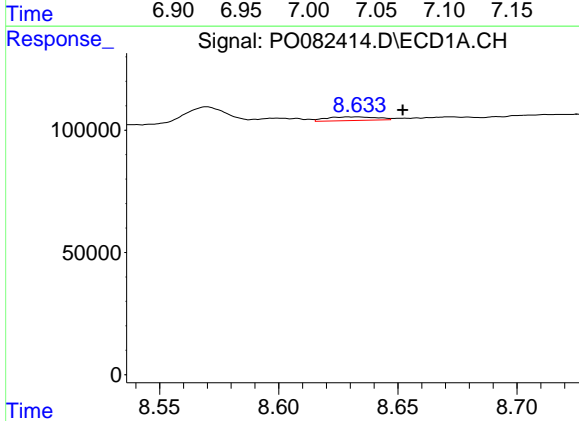
R.T.: 8.275 min
 Delta R.T.: -0.008 min
 Response: 200020
 Conc: 60.13 ng/ml

Instrument :
 ECD_O
 ClientSampleId :
 FDR-BH-5-20211029-6.5-7



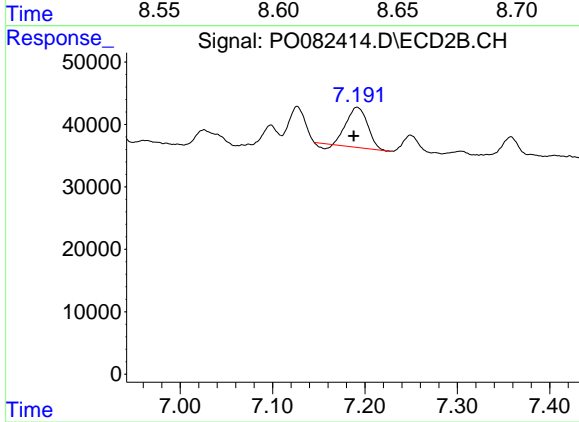
#32 AR-1260-2

R.T.: 7.026 min
 Delta R.T.: -0.007 min
 Response: 43079
 Conc: 21.48 ng/ml



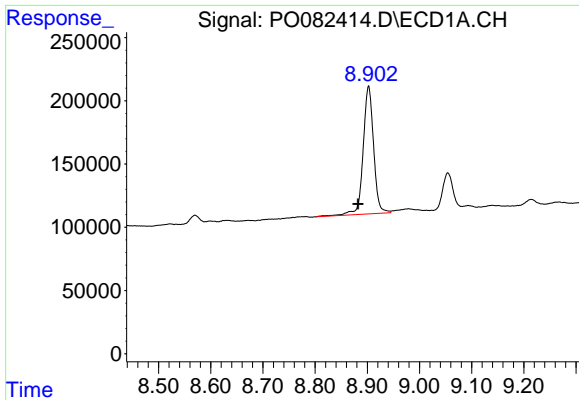
#33 AR-1260-3

R.T.: 8.633 min
 Delta R.T.: -0.019 min
 Response: 21791
 Conc: 9.67 ng/ml



#33 AR-1260-3

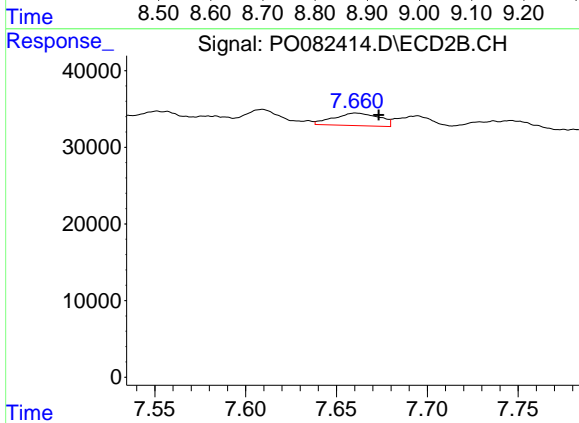
R.T.: 7.191 min
 Delta R.T.: 0.004 min
 Response: 100640
 Conc: 53.12 ng/ml



#34 AR-1260-4

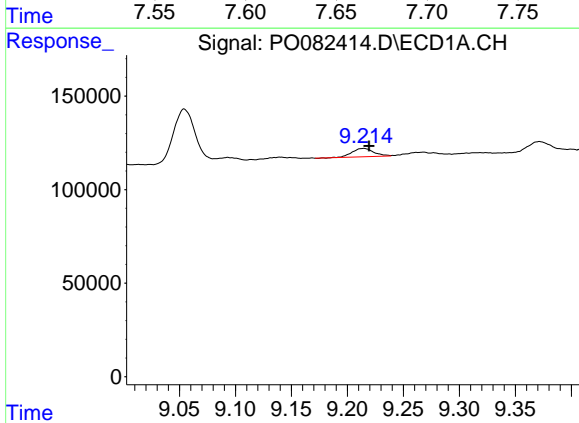
R.T.: 8.903 min
 Delta R.T.: 0.020 min
 Response: 1405938
 Conc: 531.07 ng/ml

Instrument :
 ECD_O
 ClientSampleId :
 FDR-BH-5-20211029-6.5-7



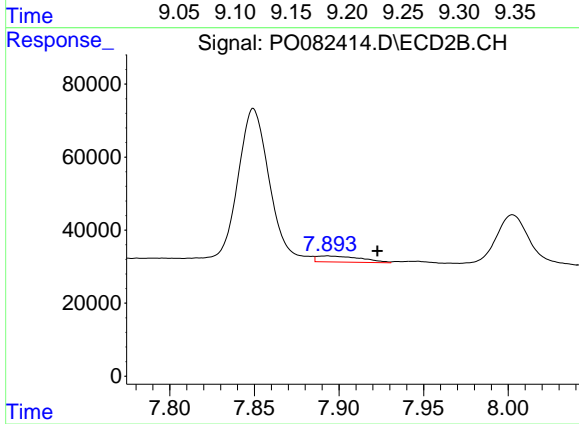
#34 AR-1260-4

R.T.: 7.661 min
 Delta R.T.: -0.013 min
 Response: 28609
 Conc: 20.87 ng/ml



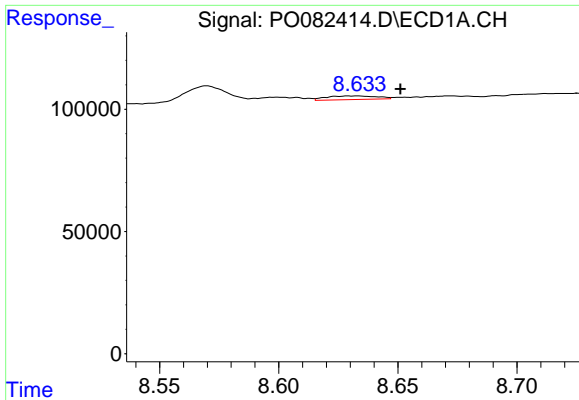
#35 AR-1260-5

R.T.: 9.214 min
 Delta R.T.: -0.005 min
 Response: 60187
 Conc: 10.99 ng/ml



#35 AR-1260-5

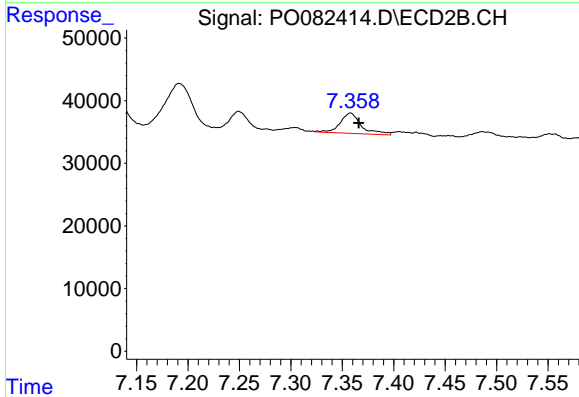
R.T.: 7.893 min
 Delta R.T.: -0.030 min
 Response: 30224
 Conc: 9.15 ng/ml



#36 AR-1262-1

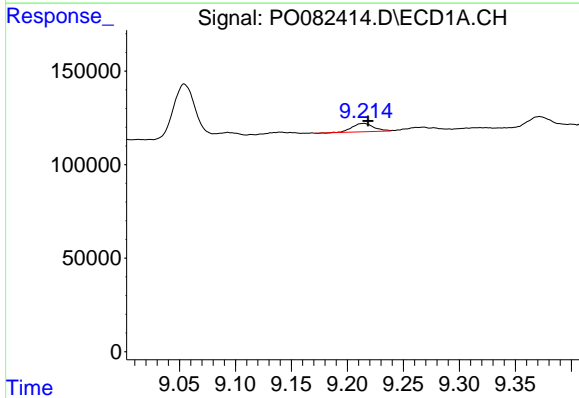
R.T.: 8.633 min
 Delta R.T.: -0.018 min
 Response: 21791
 Conc: 6.37 ng/ml

Instrument :
 ECD_O
 ClientSampleId :
 FDR-BH-5-20211029-6.5-7



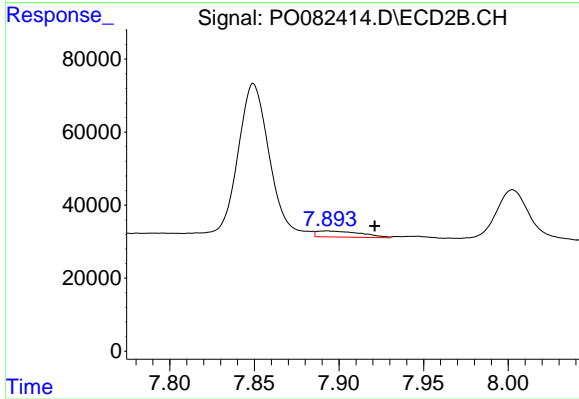
#36 AR-1262-1

R.T.: 7.358 min
 Delta R.T.: -0.008 min
 Response: 46178
 Conc: 41.86 ng/ml



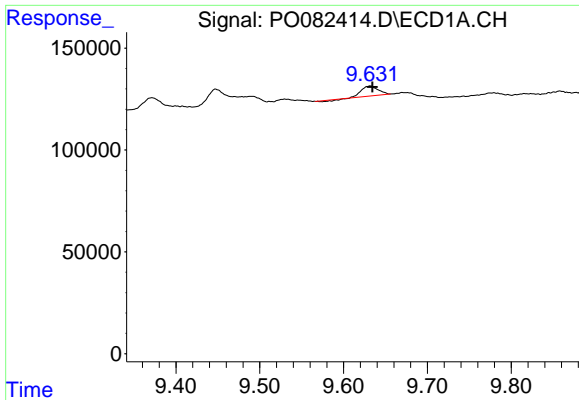
#37 AR-1262-2

R.T.: 9.214 min
 Delta R.T.: -0.004 min
 Response: 60187
 Conc: 9.58 ng/ml



#37 AR-1262-2

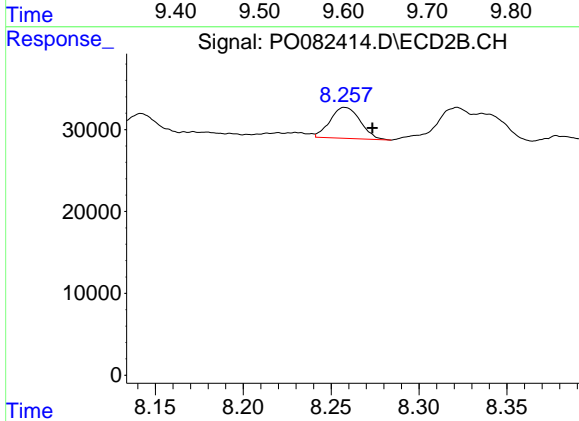
R.T.: 7.893 min
 Delta R.T.: -0.028 min
 Response: 30224
 Conc: 8.46 ng/ml



#39 AR-1262-4

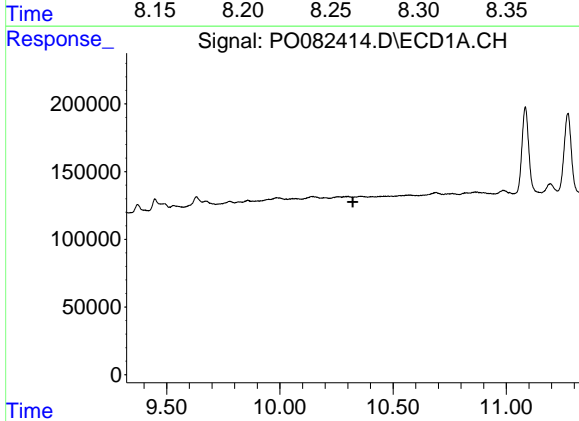
R.T.: 9.632 min
 Delta R.T.: -0.002 min
 Response: 62316
 Conc: 37.22 ng/ml

Instrument :
 ECD_O
 ClientSampleId :
 FDR-BH-5-20211029-6.5-7



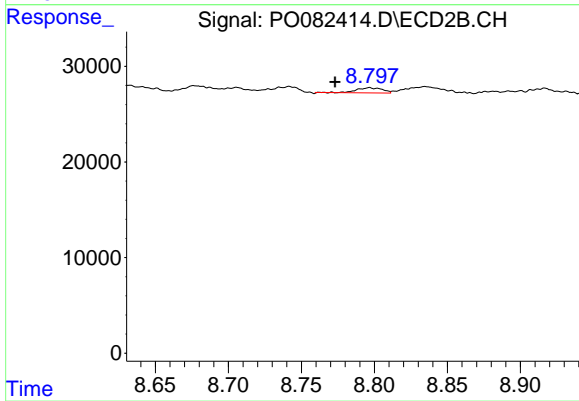
#39 AR-1262-4

R.T.: 8.258 min
 Delta R.T.: -0.016 min
 Response: 44888
 Conc: 16.87 ng/ml



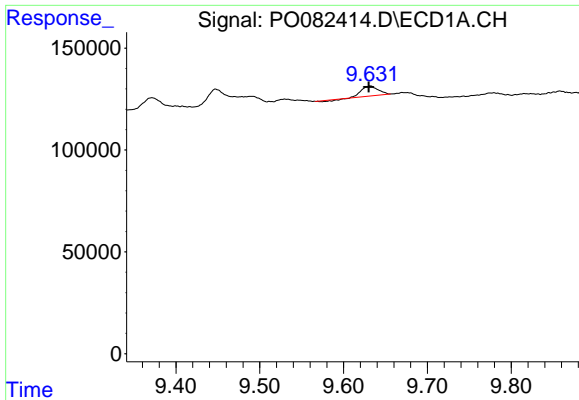
#40 AR-1262-5

R.T.: 0.000 min
 Exp R.T. : 10.322 min
 Response: 0
 Conc: N.D.



#40 AR-1262-5

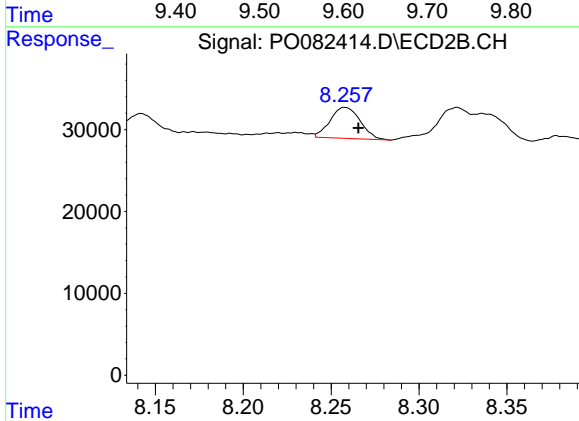
R.T.: 8.797 min
 Delta R.T.: 0.024 min
 Response: 6577
 Conc: 5.21 ng/ml



#42 AR-1268-2

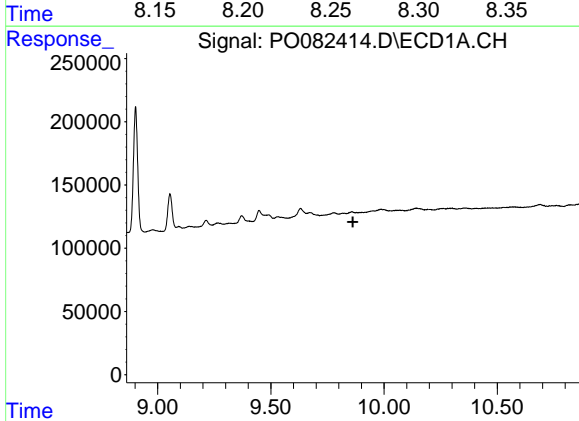
R.T.: 9.632 min
 Delta R.T.: 0.002 min
 Response: 62316
 Conc: 8.02 ng/ml

Instrument :
 ECD_O
 ClientSampleId :
 FDR-BH-5-20211029-6.5-7



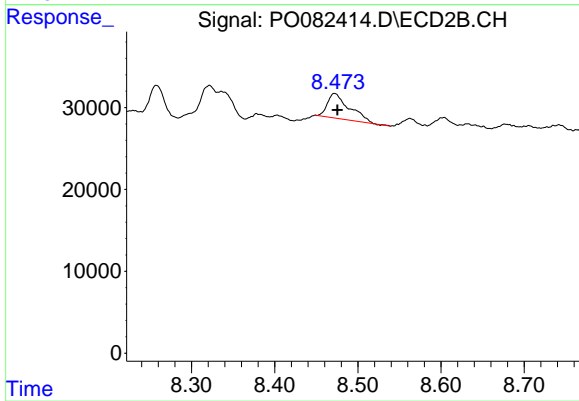
#42 AR-1268-2

R.T.: 8.258 min
 Delta R.T.: -0.007 min
 Response: 44888
 Conc: 10.03 ng/ml



#43 AR-1268-3

R.T.: 0.000 min
 Exp R.T. : 9.862 min
 Response: 0
 Conc: N.D.



#43 AR-1268-3

R.T.: 8.472 min
 Delta R.T.: -0.003 min
 Response: 55241
 Conc: 14.51 ng/ml