

Data Path : Z:\pestpcbsrv\HPCHEM1\ECD_0\Data\P0110223\
 Data File : P0099292.D
 Signal(s) : Signal #1: ECD1A.ch Signal #2: ECD2B.ch
 Acq On : 02 Nov 2023 16:26
 Operator : YP/AJ
 Sample : AR1242CCC500
 Misc :
 ALS Vial : 4 Sample Multiplier: 1

Instrument :
 ECD_0
 ClientSampleId :

Integration File signal 1: autoint1.e
 Integration File signal 2: autoint2.e
 Quant Time: Nov 02 23:17:25 2023
 Quant Method : Z:\pestpcbsrv\HPCHEM1\ECD_0\methods\P0102523.M
 Quant Title : GC EXTRACTABLES
 QLast Update : Wed Oct 25 06:04:36 2023
 Response via : Initial Calibration
 Integrator: ChemStation

Volume Inj. : 2 µl
 Signal #1 Phase : ZB-MR1 Signal #2 Phase: ZB-MR2
 Signal #1 Info : 30Mx0.32mmx 0.50µ Signal #2 Info : 30M x 0.32mm x 0.25µm

Compound	RT#1	RT#2	Resp#1	Resp#2	ng/ml	ng/ml

System Monitoring Compounds						
1) SA Tetrachlo...	4.468	3.622	89226925	32488646	45.157	45.143
2) SA Decachlor...	10.261	8.614	50792004	18404040	44.835	34.302
Target Compounds						
3) L1 AR-1016-1	5.641	4.721	21216604	12587905	385.292	562.112 #
4) L1 AR-1016-2	5.663	4.721	30663685	12587905	370.828	402.727
5) L1 AR-1016-3	5.725	4.896	19574107	6760516	380.285	399.256
6) L1 AR-1016-4	5.824	4.938	14114903	5696151	347.286	393.986
7) L1 AR-1016-5	6.120	5.151	14915826	7580966	351.431	405.793
8) L2 AR-1221-1	4.673	3.834	3057520	1059021	123.147	113.997
9) L2 AR-1221-2	4.765	3.921	4604679	1525877	248.911	235.340
10) L2 AR-1221-3	4.840	3.996	13683474	5454106	252.571	269.643
11) L3 AR-1232-1	4.840	3.996	13683474	5454106	299.107	318.180
12) L3 AR-1232-2	5.372	4.721	17687102	12587905	748.994	821.665
13) L3 AR-1232-3	5.663	4.896	30663685	6760516	776.449	844.908
14) L3 AR-1232-4	5.824	4.980	14114903	7120762	739.818	925.523 #
15) L3 AR-1232-5	5.915	5.151	12696929	7580966	762.204	891.293
16) L4 AR-1242-1	5.641	4.721	21216604	12587905	490.079	716.448 #
17) L4 AR-1242-2	5.663	4.721	30663685	12587905	478.766	519.437
18) L4 AR-1242-3	5.725	4.896	19574107	6760516	486.607	527.313
19) L4 AR-1242-4	5.824	4.980	14114903	7120762	451.058	505.853
20) L4 AR-1242-5	6.563	5.502	15563937	8495826	504.526	508.392
21) L5 AR-1248-1	5.641	4.721	21216604	12587905	624.520	908.220 #
22) L5 AR-1248-2	5.915	4.938	12696929	5696151	242.617	286.763
23) L5 AR-1248-3	6.120	4.980	14915826	7120762	261.784	341.465 #
24) L5 AR-1248-4	6.524	5.151	14654470	7580966	268.733	308.376
25) L5 AR-1248-5	6.563	5.543	15563937	6841848	273.984	315.025
26) L6 AR-1254-1	6.496	5.502	11529190	8495826	175.144	239.769 #
27) L6 AR-1254-2	6.720	5.649	13726705	2549429	142.588	79.708 #
28) L6 AR-1254-3	7.084	6.053	6435896	3245653	72.004	66.390
29) L6 AR-1254-4	7.370	6.281	3143148	2213952	57.374	84.480 #
30) L6 AR-1254-5	7.789	6.699	1763154	954526	26.185	22.643
31) L7 AR-1260-1	7.246	6.196	1035687	1723058	14.453	48.846 #
32) L7 AR-1260-2	7.503	6.370	1404496	596390	17.802	14.878
33) L7 AR-1260-3	7.872	6.522	15410	315365	0.282	8.340 #
34) L7 AR-1260-4	8.079	6.992	622231	61132	9.931	2.116 #
35) L7 AR-1260-5	8.435	7.234	109372	108679	1.022	1.806 #
36) L8 AR-1262-1	7.872	6.768	15410	154811	0.170	3.299 #
37) L8 AR-1262-2	8.435	6.992	109372	61132	0.820	1.472 #
38) L8 AR-1262-3	8.751	7.538	184176	68145	1.873	2.133
39) L8 AR-1262-4	8.835	7.579	17841	187606	0.223	3.412 #
40) L8 AR-1262-5	9.508	8.088	73764	35759	1.679	1.424
41) L9 AR-1268-1	8.751	7.538	184176	68145	1.069	0.764 #

Data Path : Z:\pestpcbsrv\HPCHEM1\ECD_O\Data\P0110223\
 Data File : P0099292.D
 Signal(s) : Signal #1: ECD1A.ch Signal #2: ECD2B.ch
 Acq On : 02 Nov 2023 16:26
 Operator : YP/AJ
 Sample : AR1242CCC500
 Misc :
 ALS Vial : 4 Sample Multiplier: 1

Instrument :
 ECD_O
 ClientSampleId :

Integration File signal 1: autoint1.e
 Integration File signal 2: autoint2.e
 Quant Time: Nov 02 23:17:25 2023
 Quant Method : Z:\pestpcbsrv\HPCHEM1\ECD_O\methods\P0102523.M
 Quant Title : GC EXTRACTABLES
 QLast Update : Wed Oct 25 06:04:36 2023
 Response via : Initial Calibration
 Integrator: ChemStation

Volume Inj. : 2 µl
 Signal #1 Phase : ZB-MR1 Signal #2 Phase: ZB-MR2
 Signal #1 Info : 30Mx0.32mmx 0.50µ Signal #2 Info : 30M x 0.32mm x 0.25µm

	Compound	RT#1	RT#2	Resp#1	Resp#2	ng/ml	ng/ml
42)	L9 AR-1268-2	8.835	7.579	17841	187606	0.114	2.376 #
43)	L9 AR-1268-3	9.081	7.791	42929	74457	0.306	1.058 #
44)	L9 AR-1268-4	9.508	8.088	73764	35759	1.471	1.298
45)	L9 AR-1268-5	9.911	8.368	550252	81030	1.345	0.425 #

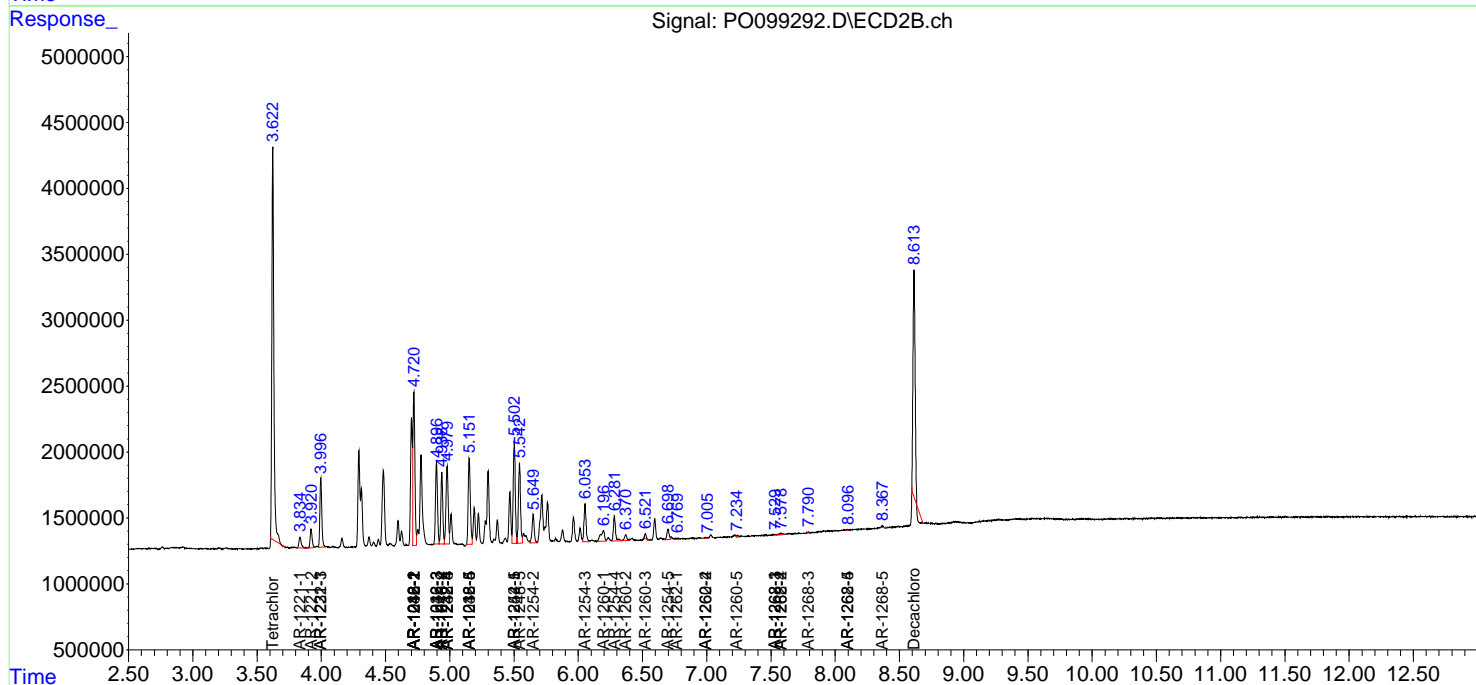
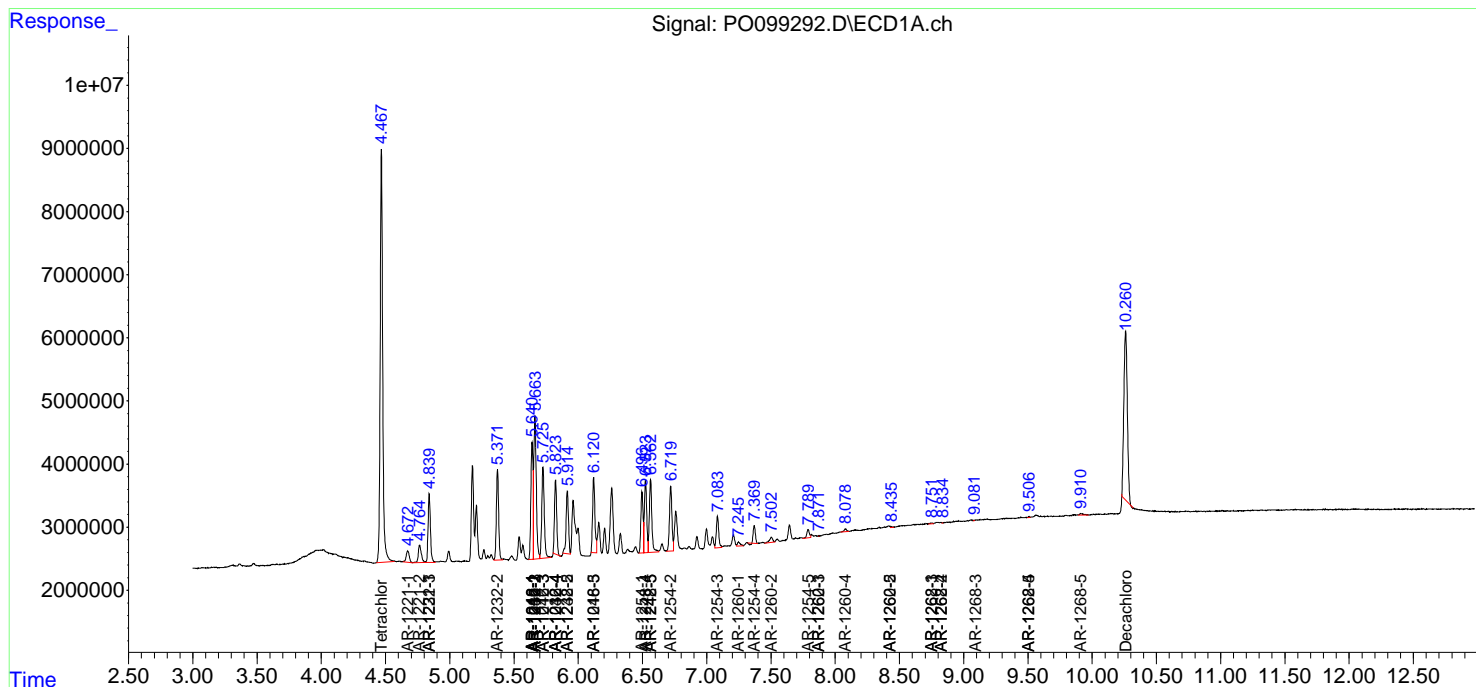
(f)=RT Delta > 1/2 Window (#)=Amounts differ by > 25% (m)=manual int.

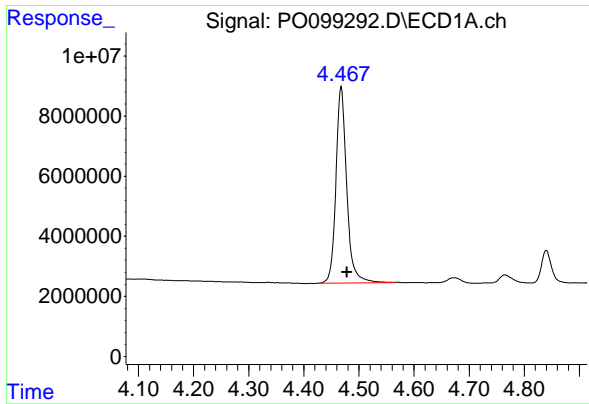
Data Path : Z:\pestpcbsrv\HPCHEM1\ECD_O\Data\PO110223\
Data File : P0099292.D
Signal(s) : Signal #1: ECD1A.ch Signal #2: ECD2B.ch
Acq On : 02 Nov 2023 16:26
Operator : YP/AJ
Sample : AR1242CCC500
Misc :
ALS Vial : 4 Sample Multiplier: 1

Instrument :
ECD_O
ClientSampleId :

Integration File signal 1: autoint1.e
Integration File signal 2: autoint2.e
Quant Time: Nov 02 23:17:25 2023
Quant Method : Z:\pestpcbsrv\HPCHEM1\ECD_O\methods\PO102523.M
Quant Title : GC EXTRACTABLES
QLast Update : Wed Oct 25 06:04:36 2023
Response via : Initial Calibration
Integrator: ChemStation

Volume Inj. : 2 µl
Signal #1 Phase : ZB-MR1 Signal #2 Phase: ZB-MR2
Signal #1 Info : 30Mx0.32mmx 0.50µ Signal #2 Info : 30M x 0.32mm x 0.25µm

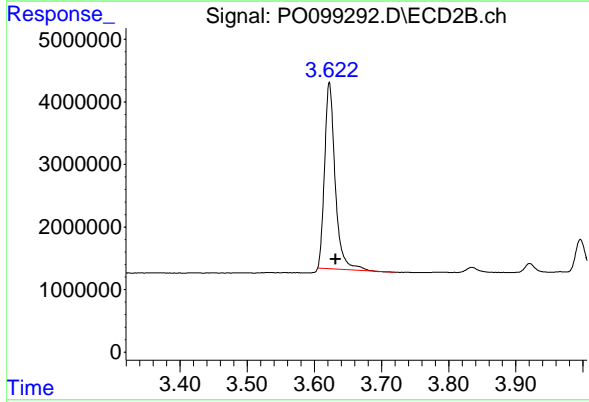




#1 Tetrachloro-m-xylene

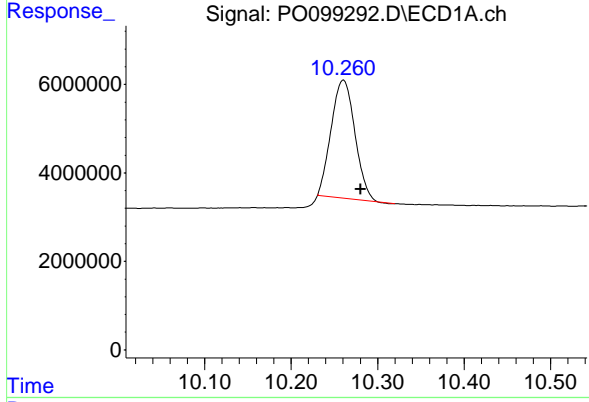
R.T.: 4.468 min
 Delta R.T.: -0.010 min
 Response: 89226925
 Conc: 45.16 ng/ml

Instrument :
 ECD_O
 ClientSampleId :



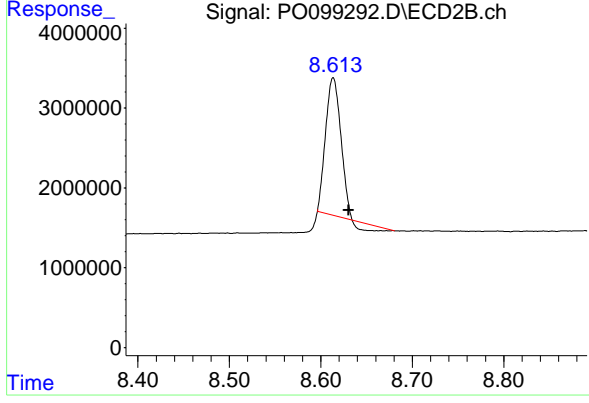
#1 Tetrachloro-m-xylene

R.T.: 3.622 min
 Delta R.T.: -0.009 min
 Response: 32488646
 Conc: 45.14 ng/ml



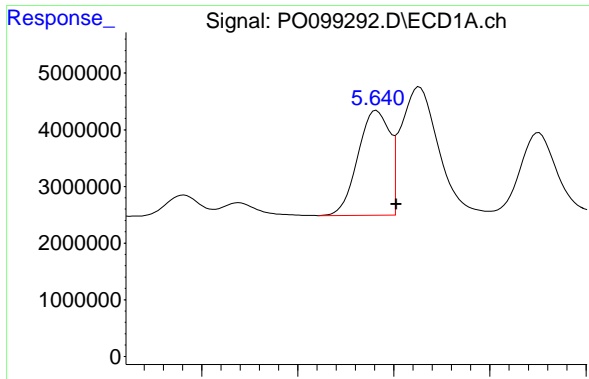
#2 Decachlorobiphenyl

R.T.: 10.261 min
 Delta R.T.: -0.020 min
 Response: 50792004
 Conc: 44.83 ng/ml



#2 Decachlorobiphenyl

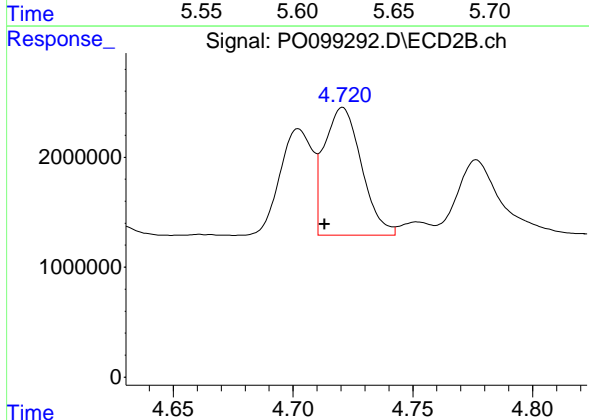
R.T.: 8.614 min
 Delta R.T.: -0.017 min
 Response: 18404040
 Conc: 34.30 ng/ml



#3 AR-1016-1

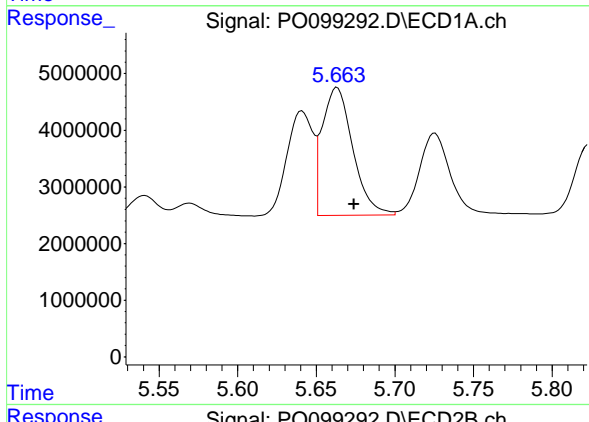
R.T.: 5.641 min
Delta R.T.: -0.010 min
Response: 21216604
Conc: 385.29 ng/ml

Instrument :
ECD_O
ClientSampleId :



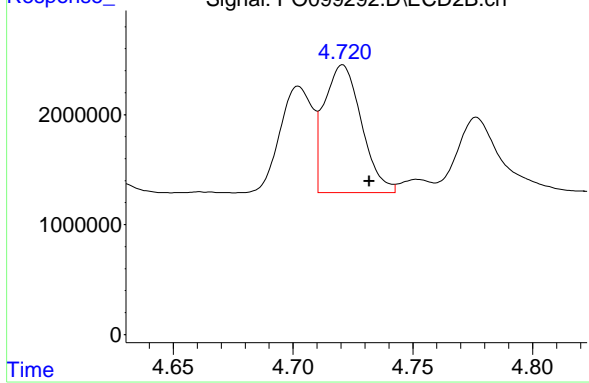
#3 AR-1016-1

R.T.: 4.721 min
Delta R.T.: 0.008 min
Response: 12587905
Conc: 562.11 ng/ml



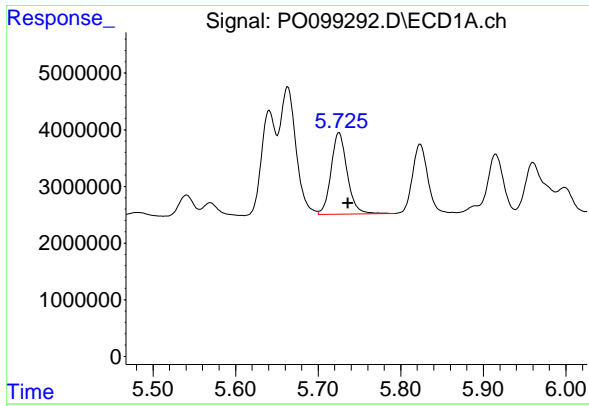
#4 AR-1016-2

R.T.: 5.663 min
Delta R.T.: -0.011 min
Response: 30663685
Conc: 370.83 ng/ml



#4 AR-1016-2

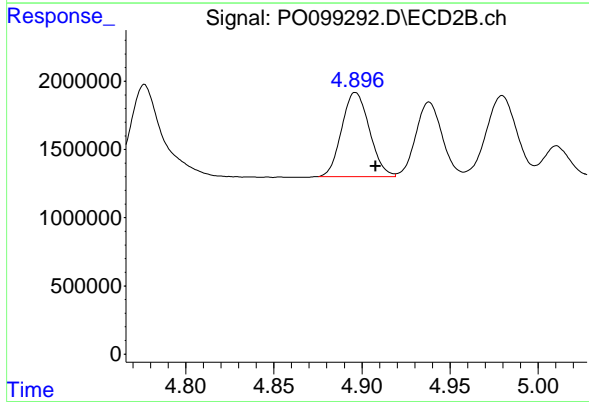
R.T.: 4.721 min
Delta R.T.: -0.011 min
Response: 12587905
Conc: 402.73 ng/ml



#5 AR-1016-3

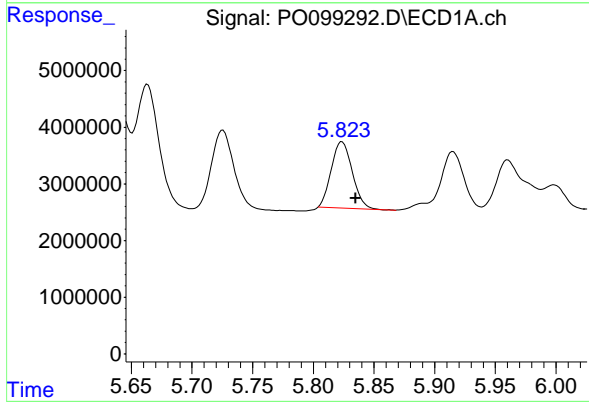
R.T.: 5.725 min
 Delta R.T.: -0.010 min
 Response: 19574107
 Conc: 380.29 ng/ml

Instrument :
 ECD_O
 ClientSampleId :



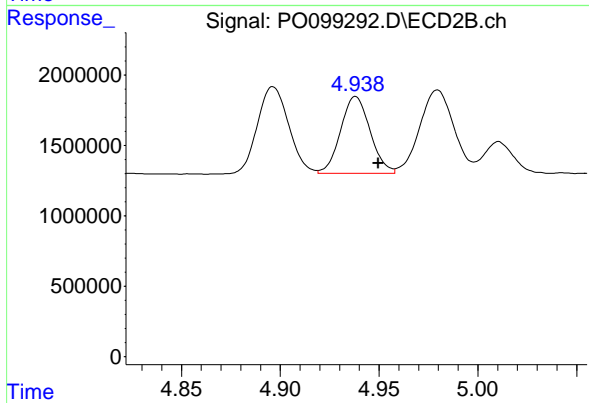
#5 AR-1016-3

R.T.: 4.896 min
 Delta R.T.: -0.011 min
 Response: 6760516
 Conc: 399.26 ng/ml



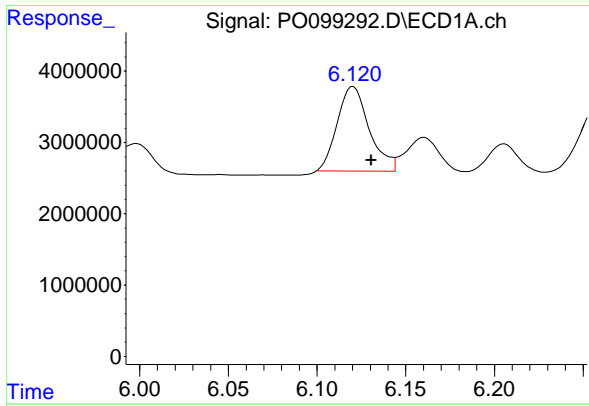
#6 AR-1016-4

R.T.: 5.824 min
 Delta R.T.: -0.011 min
 Response: 14114903
 Conc: 347.29 ng/ml



#6 AR-1016-4

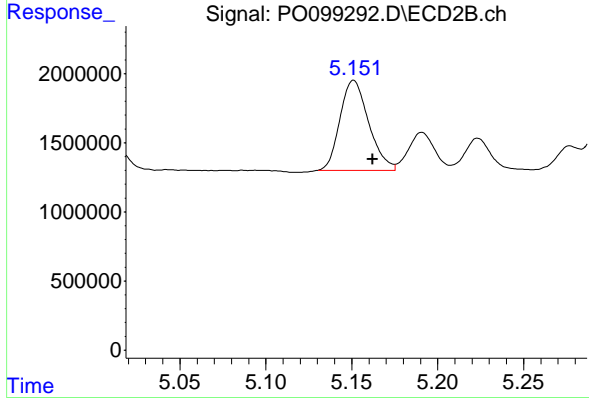
R.T.: 4.938 min
 Delta R.T.: -0.011 min
 Response: 5696151
 Conc: 393.99 ng/ml



#7 AR-1016-5

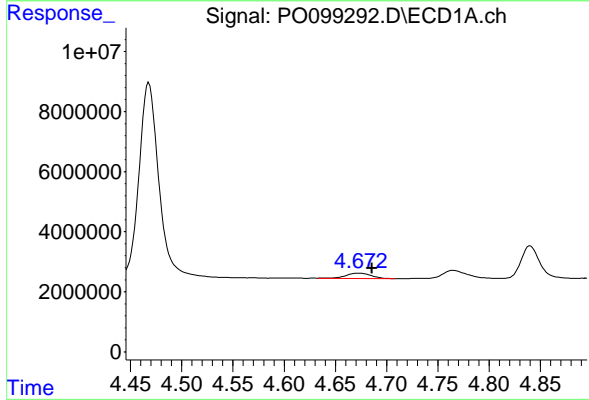
R.T.: 6.120 min
 Delta R.T.: -0.010 min
 Response: 14915826
 Conc: 351.43 ng/ml

Instrument :
 ECD_O
 ClientSampleId :



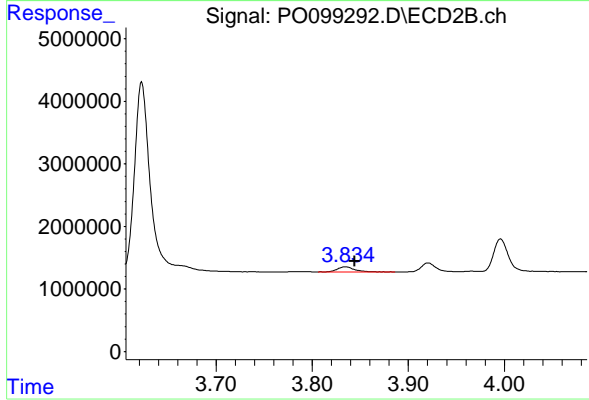
#7 AR-1016-5

R.T.: 5.151 min
 Delta R.T.: -0.011 min
 Response: 7580966
 Conc: 405.79 ng/ml



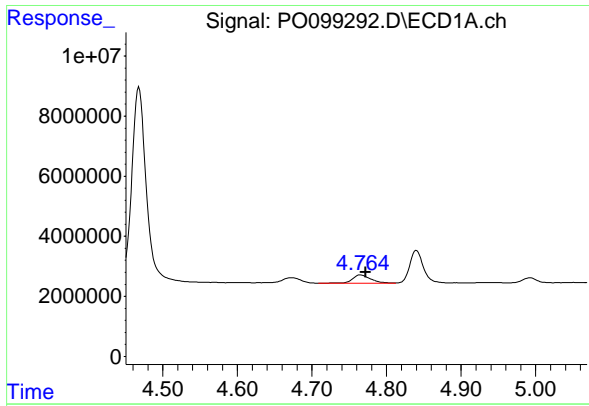
#8 AR-1221-1

R.T.: 4.673 min
 Delta R.T.: -0.013 min
 Response: 3057520
 Conc: 123.15 ng/ml



#8 AR-1221-1

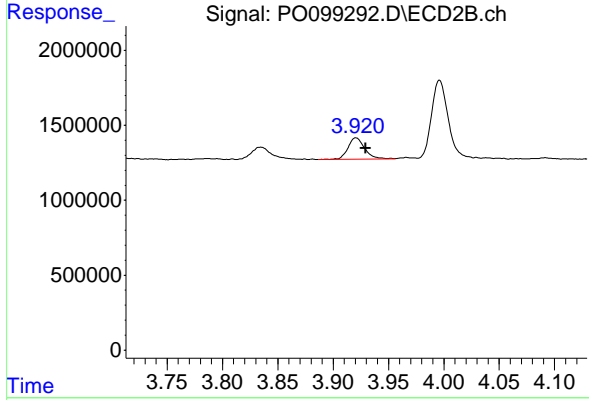
R.T.: 3.834 min
 Delta R.T.: -0.010 min
 Response: 1059021
 Conc: 114.00 ng/ml



#9 AR-1221-2

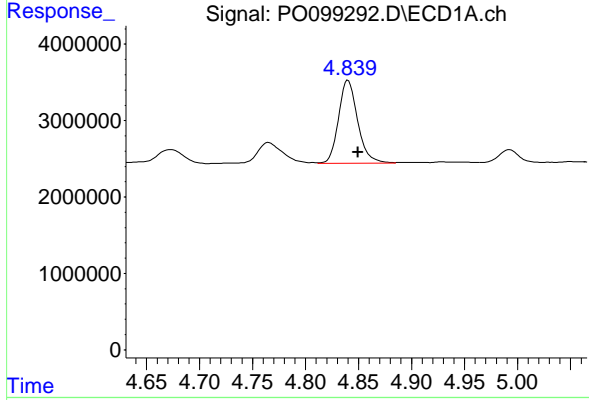
R.T.: 4.765 min
 Delta R.T.: -0.007 min
 Response: 4604679
 Conc: 248.91 ng/ml

Instrument :
 ECD_O
 ClientSampleId :



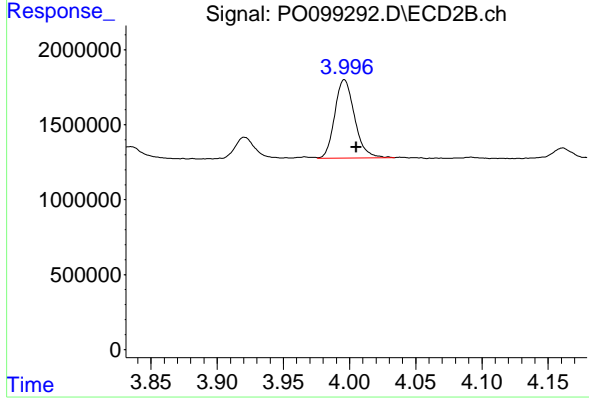
#9 AR-1221-2

R.T.: 3.921 min
 Delta R.T.: -0.009 min
 Response: 1525877
 Conc: 235.34 ng/ml



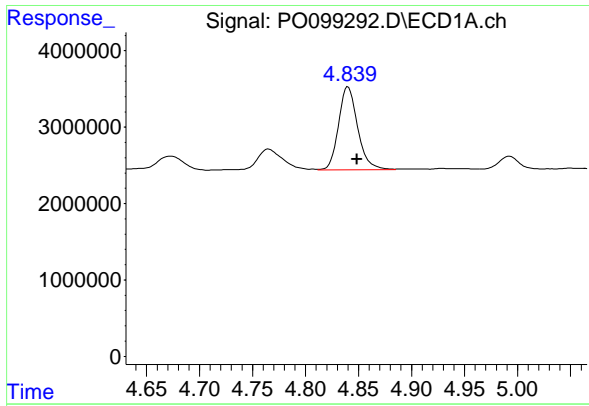
#10 AR-1221-3

R.T.: 4.840 min
 Delta R.T.: -0.009 min
 Response: 13683474
 Conc: 252.57 ng/ml



#10 AR-1221-3

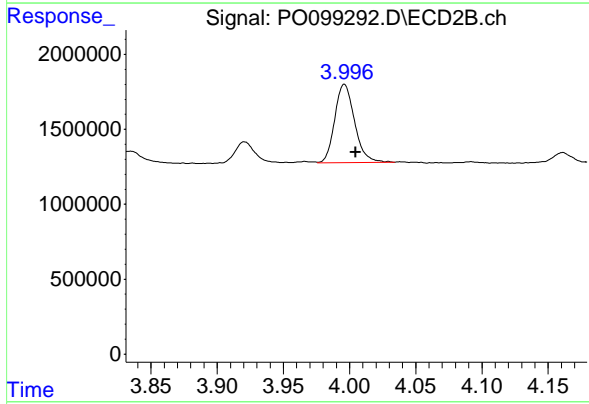
R.T.: 3.996 min
 Delta R.T.: -0.009 min
 Response: 5454106
 Conc: 269.64 ng/ml



#11 AR-1232-1

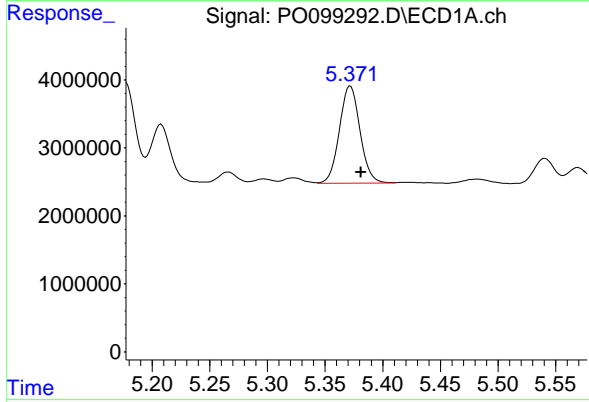
R.T.: 4.840 min
 Delta R.T.: -0.009 min
 Response: 13683474
 Conc: 299.11 ng/ml

Instrument :
 ECD_O
 ClientSampleId :



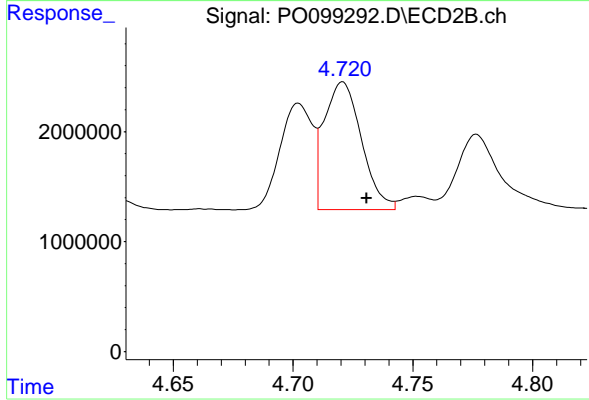
#11 AR-1232-1

R.T.: 3.996 min
 Delta R.T.: -0.008 min
 Response: 5454106
 Conc: 318.18 ng/ml



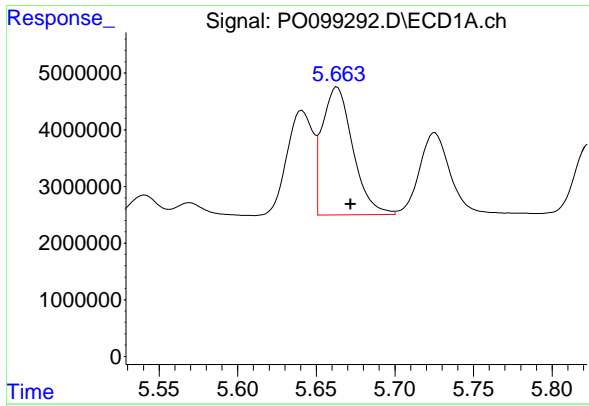
#12 AR-1232-2

R.T.: 5.372 min
 Delta R.T.: -0.009 min
 Response: 17687102
 Conc: 748.99 ng/ml



#12 AR-1232-2

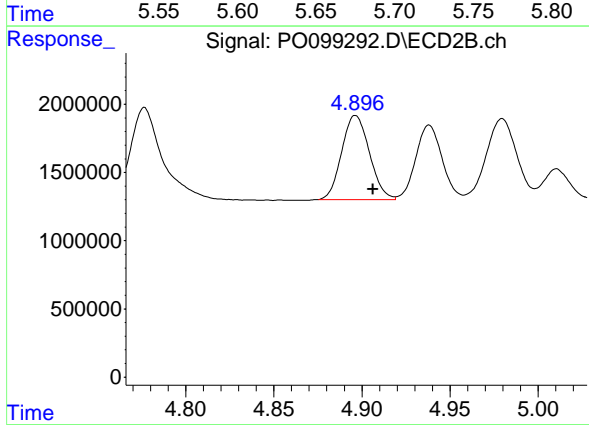
R.T.: 4.721 min
 Delta R.T.: -0.010 min
 Response: 12587905
 Conc: 821.66 ng/ml



#13 AR-1232-3

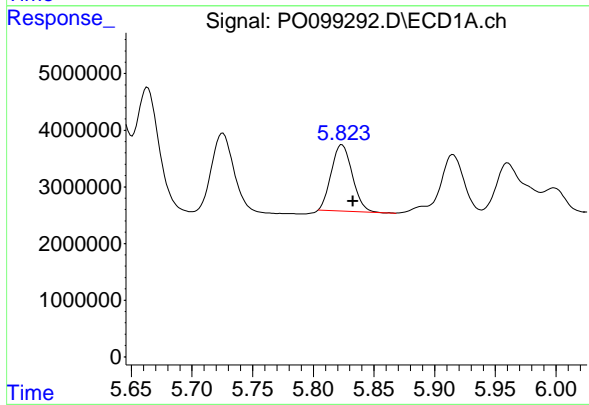
R.T.: 5.663 min
 Delta R.T.: -0.009 min
 Response: 30663685
 Conc: 776.45 ng/ml

Instrument :
 ECD_O
 ClientSampleId :



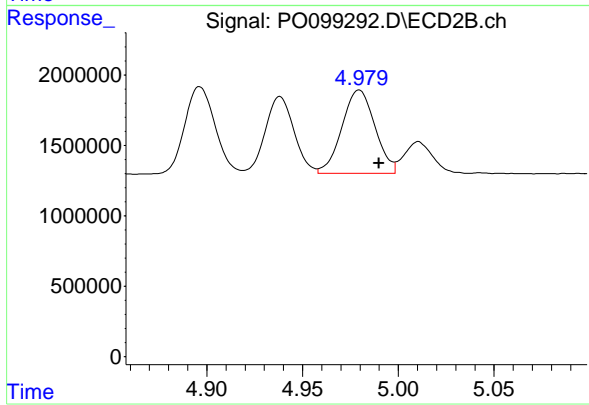
#13 AR-1232-3

R.T.: 4.896 min
 Delta R.T.: -0.010 min
 Response: 6760516
 Conc: 844.91 ng/ml



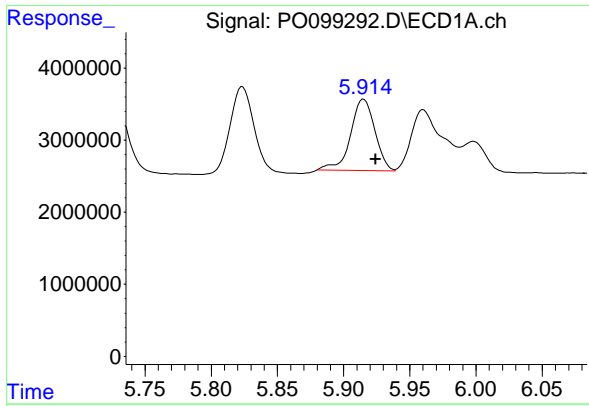
#14 AR-1232-4

R.T.: 5.824 min
 Delta R.T.: -0.009 min
 Response: 14114903
 Conc: 739.82 ng/ml



#14 AR-1232-4

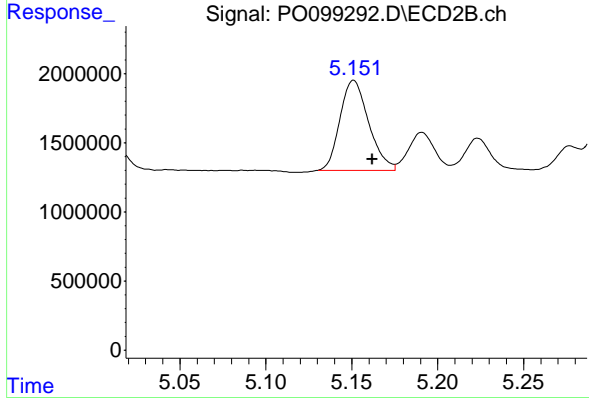
R.T.: 4.980 min
 Delta R.T.: -0.010 min
 Response: 7120762
 Conc: 925.52 ng/ml



#15 AR-1232-5

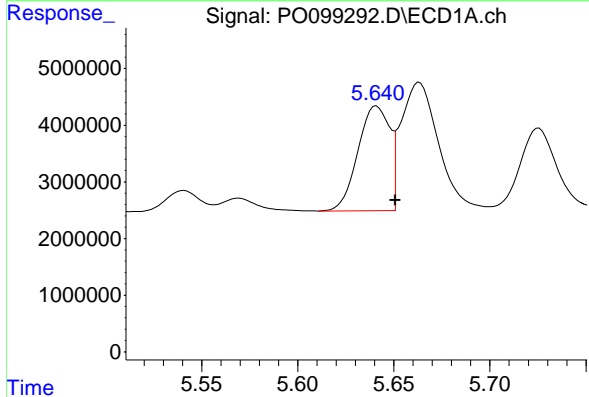
R.T.: 5.915 min
 Delta R.T.: -0.009 min
 Response: 12696929
 Conc: 762.20 ng/ml

Instrument :
 ECD_O
 ClientSampleId :



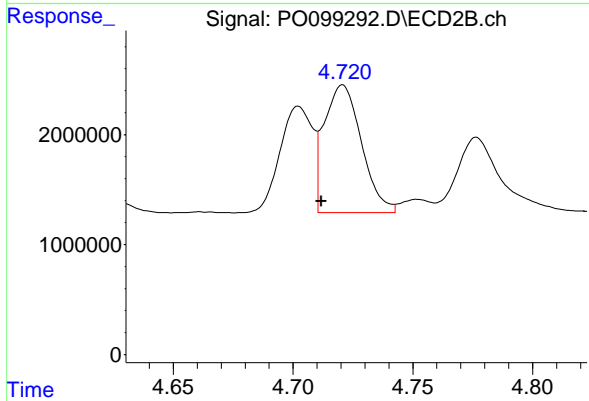
#15 AR-1232-5

R.T.: 5.151 min
 Delta R.T.: -0.011 min
 Response: 7580966
 Conc: 891.29 ng/ml



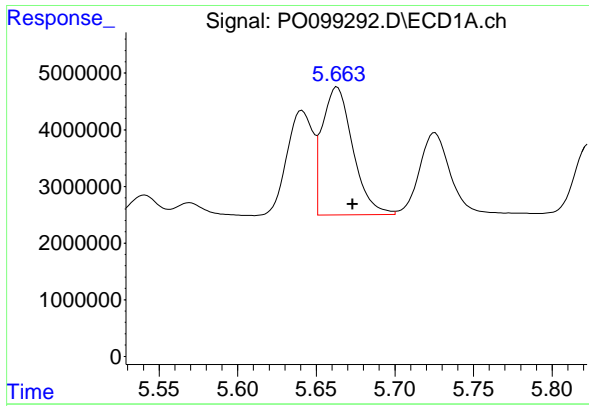
#16 AR-1242-1

R.T.: 5.641 min
 Delta R.T.: -0.010 min
 Response: 21216604
 Conc: 490.08 ng/ml



#16 AR-1242-1

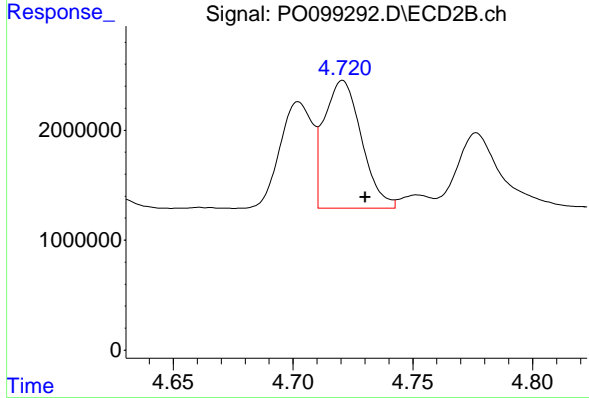
R.T.: 4.721 min
 Delta R.T.: 0.009 min
 Response: 12587905
 Conc: 716.45 ng/ml



#17 AR-1242-2

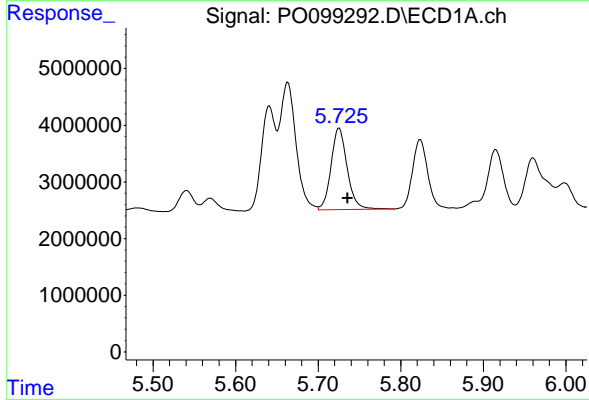
R.T.: 5.663 min
 Delta R.T.: -0.010 min
 Response: 30663685
 Conc: 478.77 ng/ml

Instrument :
 ECD_O
 ClientSampleId :



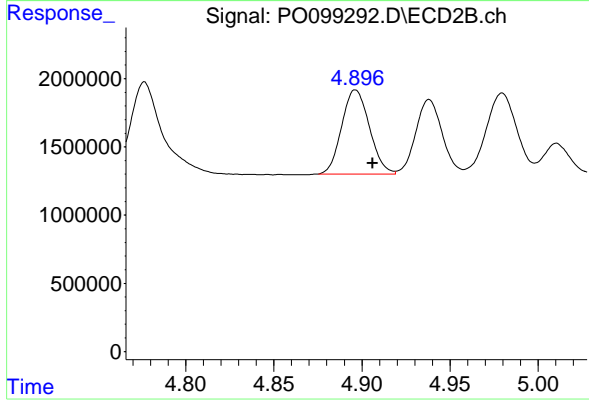
#17 AR-1242-2

R.T.: 4.721 min
 Delta R.T.: -0.009 min
 Response: 12587905
 Conc: 519.44 ng/ml



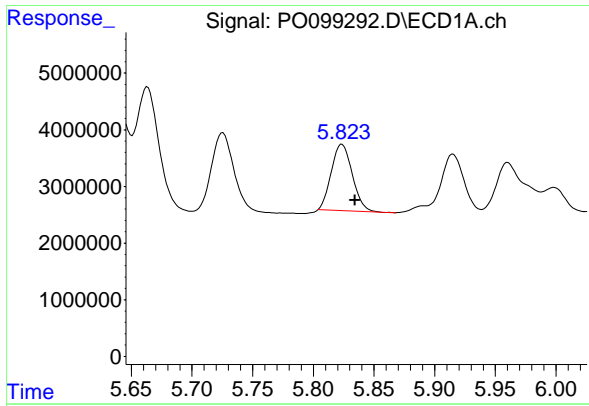
#18 AR-1242-3

R.T.: 5.725 min
 Delta R.T.: -0.010 min
 Response: 19574107
 Conc: 486.61 ng/ml



#18 AR-1242-3

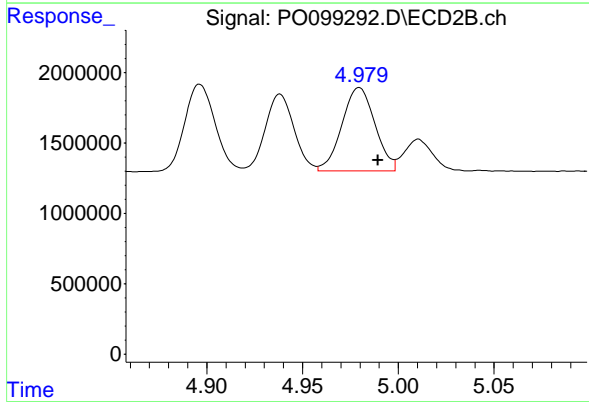
R.T.: 4.896 min
 Delta R.T.: -0.010 min
 Response: 6760516
 Conc: 527.31 ng/ml



#19 AR-1242-4

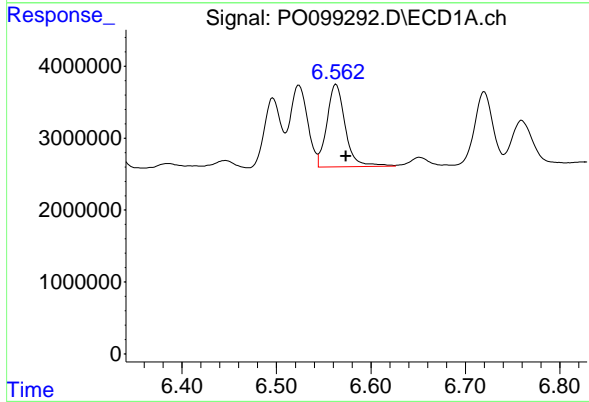
R.T.: 5.824 min
 Delta R.T.: -0.011 min
 Response: 14114903
 Conc: 451.06 ng/ml

Instrument :
 ECD_O
 ClientSampleId :



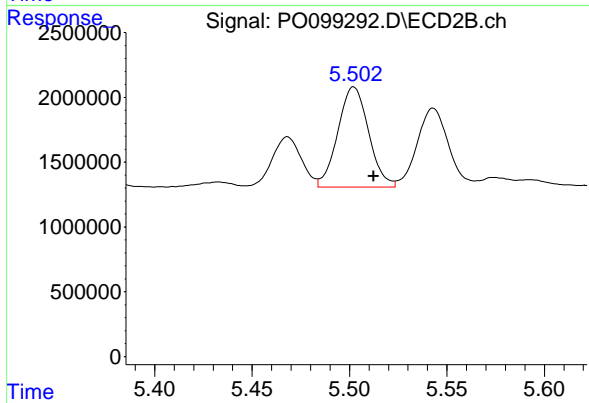
#19 AR-1242-4

R.T.: 4.980 min
 Delta R.T.: -0.010 min
 Response: 7120762
 Conc: 505.85 ng/ml



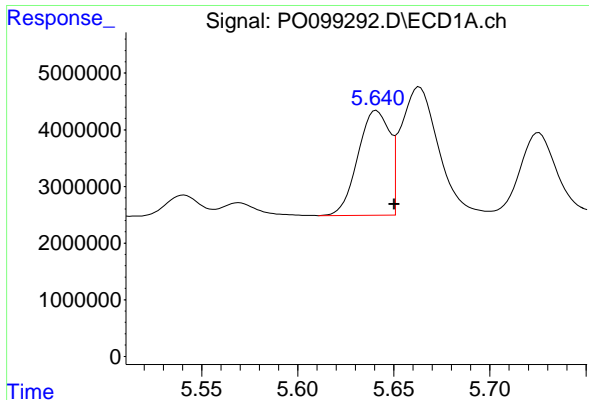
#20 AR-1242-5

R.T.: 6.563 min
 Delta R.T.: -0.011 min
 Response: 15563937
 Conc: 504.53 ng/ml



#20 AR-1242-5

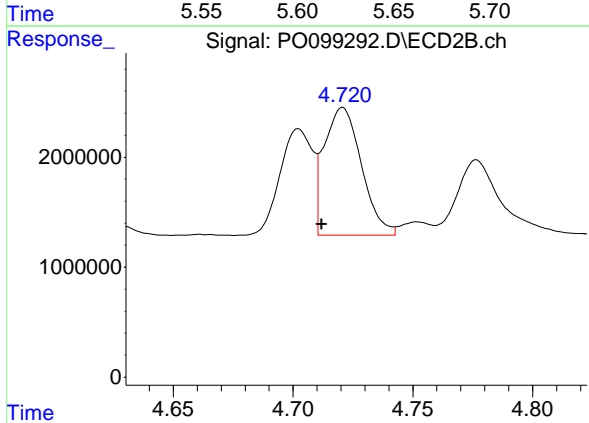
R.T.: 5.502 min
 Delta R.T.: -0.010 min
 Response: 8495826
 Conc: 508.39 ng/ml



#21 AR-1248-1

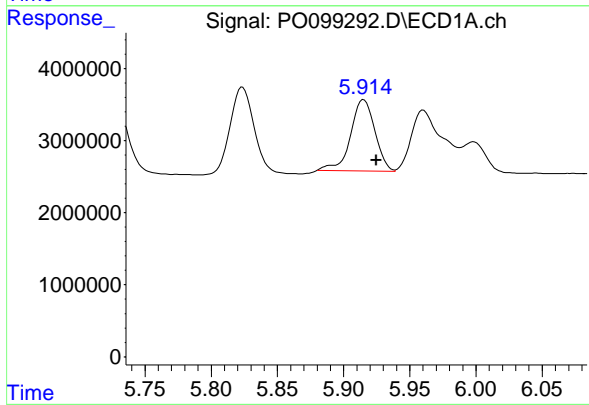
R.T.: 5.641 min
 Delta R.T.: -0.009 min
 Response: 21216604
 Conc: 624.52 ng/ml

Instrument :
 ECD_O
 ClientSampleId :



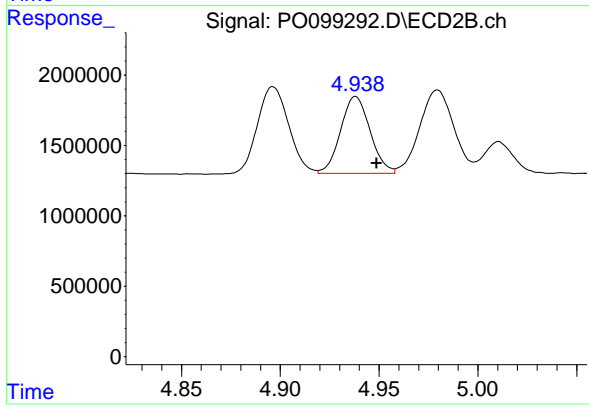
#21 AR-1248-1

R.T.: 4.721 min
 Delta R.T.: 0.009 min
 Response: 12587905
 Conc: 908.22 ng/ml



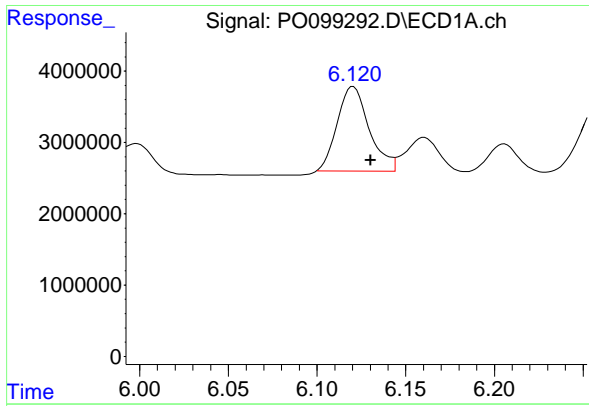
#22 AR-1248-2

R.T.: 5.915 min
 Delta R.T.: -0.009 min
 Response: 12696929
 Conc: 242.62 ng/ml



#22 AR-1248-2

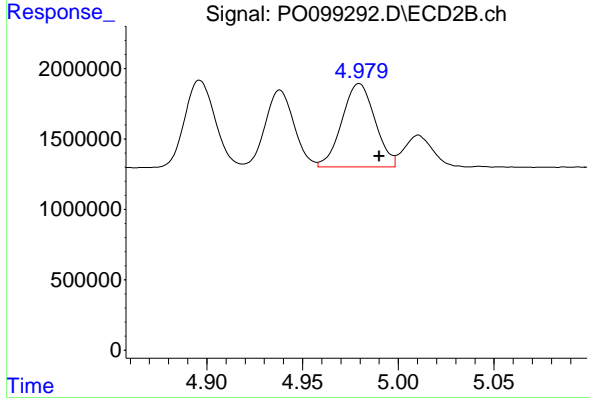
R.T.: 4.938 min
 Delta R.T.: -0.011 min
 Response: 5696151
 Conc: 286.76 ng/ml



#23 AR-1248-3

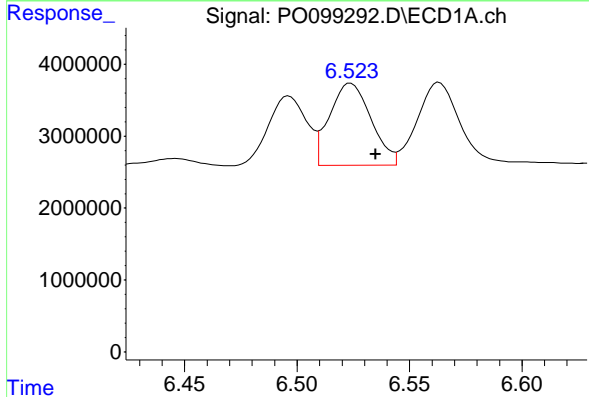
R.T.: 6.120 min
 Delta R.T.: -0.010 min
 Response: 14915826
 Conc: 261.78 ng/ml

Instrument :
 ECD_O
 ClientSampleId :



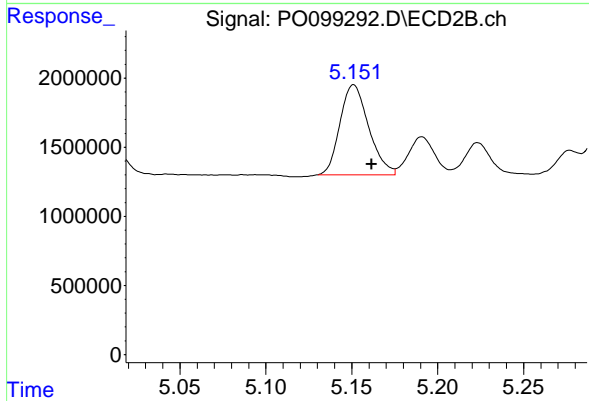
#23 AR-1248-3

R.T.: 4.980 min
 Delta R.T.: -0.010 min
 Response: 7120762
 Conc: 341.47 ng/ml



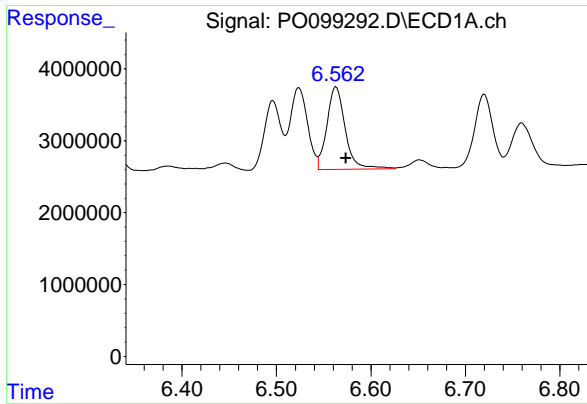
#24 AR-1248-4

R.T.: 6.524 min
 Delta R.T.: -0.011 min
 Response: 14654470
 Conc: 268.73 ng/ml



#24 AR-1248-4

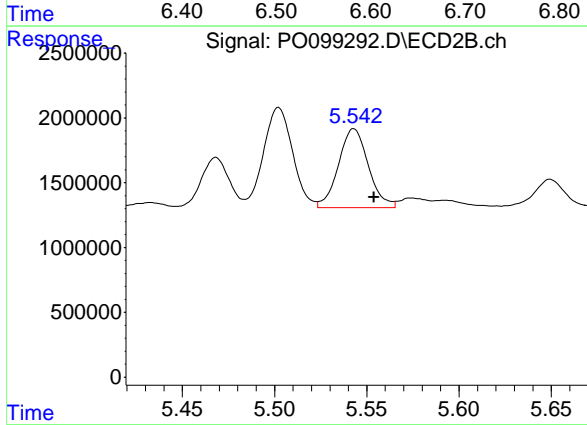
R.T.: 5.151 min
 Delta R.T.: -0.010 min
 Response: 7580966
 Conc: 308.38 ng/ml



#25 AR-1248-5

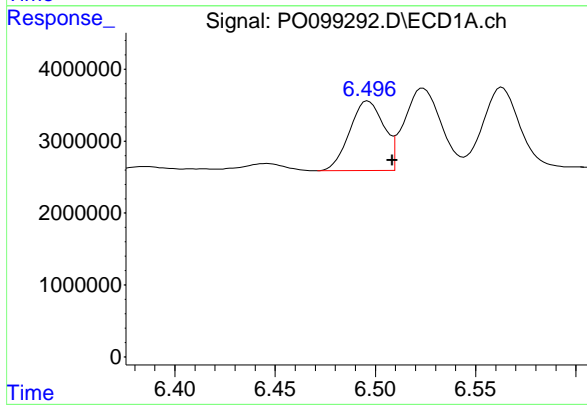
R.T.: 6.563 min
 Delta R.T.: -0.010 min
 Response: 15563937
 Conc: 273.98 ng/ml

Instrument :
 ECD_O
 ClientSampleId :



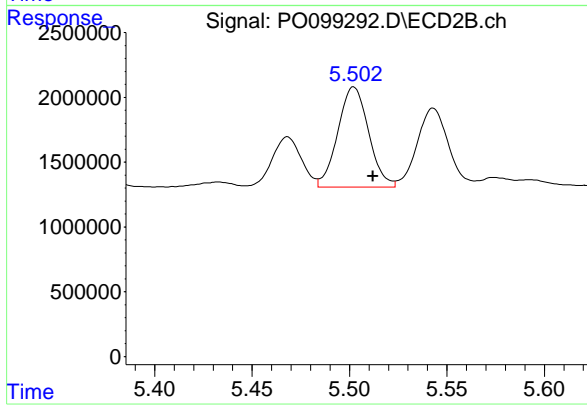
#25 AR-1248-5

R.T.: 5.543 min
 Delta R.T.: -0.011 min
 Response: 6841848
 Conc: 315.03 ng/ml



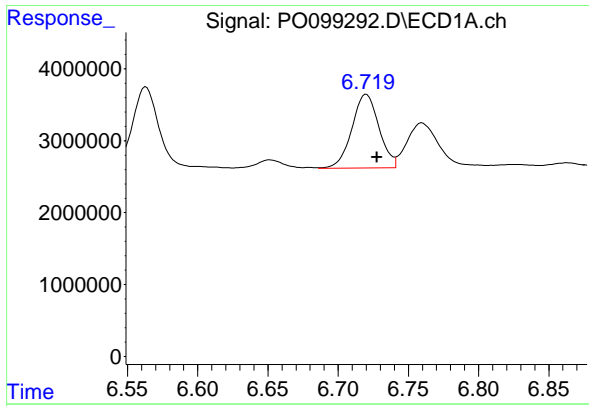
#26 AR-1254-1

R.T.: 6.496 min
 Delta R.T.: -0.012 min
 Response: 11529190
 Conc: 175.14 ng/ml



#26 AR-1254-1

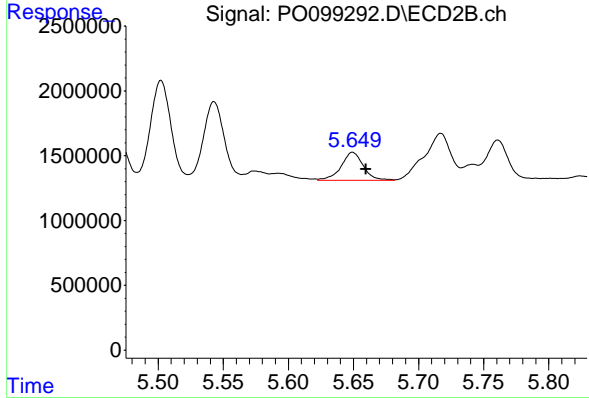
R.T.: 5.502 min
 Delta R.T.: -0.010 min
 Response: 8495826
 Conc: 239.77 ng/ml



#27 AR-1254-2

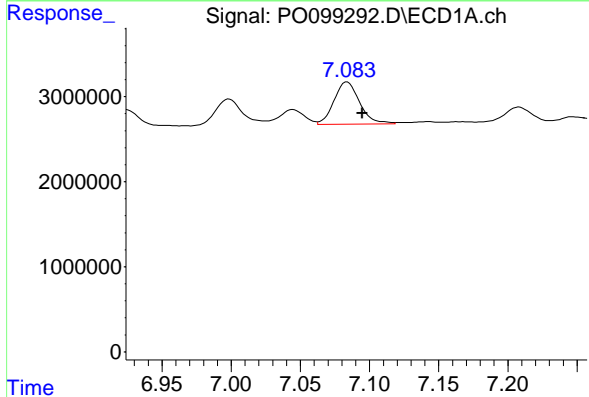
R.T.: 6.720 min
 Delta R.T.: -0.008 min
 Response: 13726705
 Conc: 142.59 ng/ml

Instrument :
 ECD_O
 ClientSampleId :



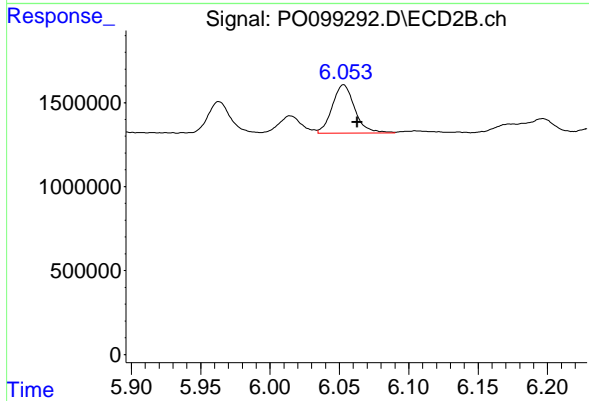
#27 AR-1254-2

R.T.: 5.649 min
 Delta R.T.: -0.010 min
 Response: 2549429
 Conc: 79.71 ng/ml



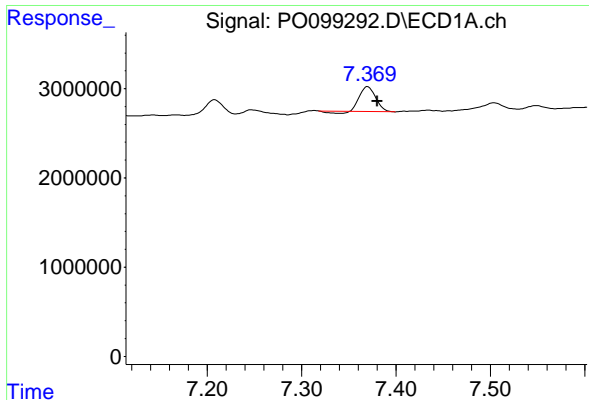
#28 AR-1254-3

R.T.: 7.084 min
 Delta R.T.: -0.011 min
 Response: 6435896
 Conc: 72.00 ng/ml



#28 AR-1254-3

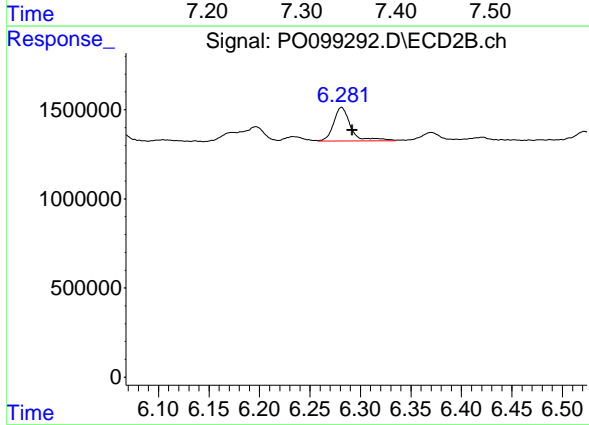
R.T.: 6.053 min
 Delta R.T.: -0.010 min
 Response: 3245653
 Conc: 66.39 ng/ml



#29 AR-1254-4

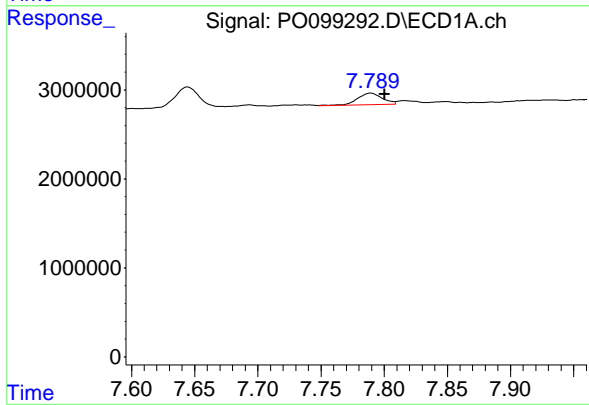
R.T.: 7.370 min
 Delta R.T.: -0.010 min
 Response: 3143148
 Conc: 57.37 ng/ml

Instrument :
 ECD_O
 ClientSampleId :



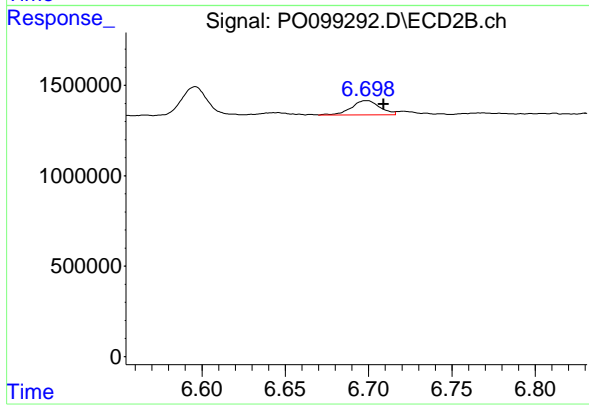
#29 AR-1254-4

R.T.: 6.281 min
 Delta R.T.: -0.011 min
 Response: 2213952
 Conc: 84.48 ng/ml



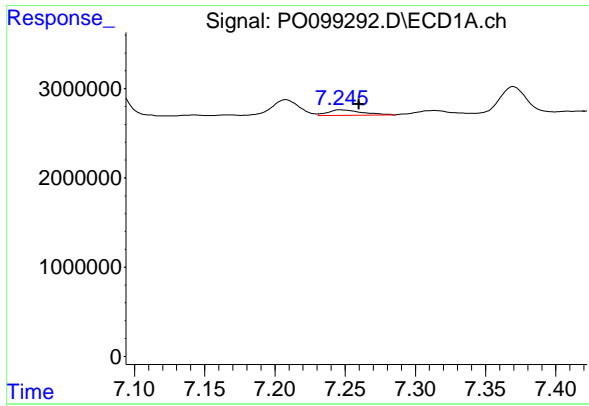
#30 AR-1254-5

R.T.: 7.789 min
 Delta R.T.: -0.011 min
 Response: 1763154
 Conc: 26.18 ng/ml



#30 AR-1254-5

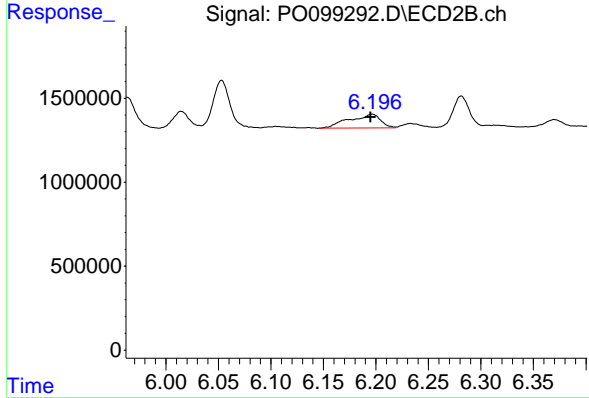
R.T.: 6.699 min
 Delta R.T.: -0.010 min
 Response: 954526
 Conc: 22.64 ng/ml



#31 AR-1260-1

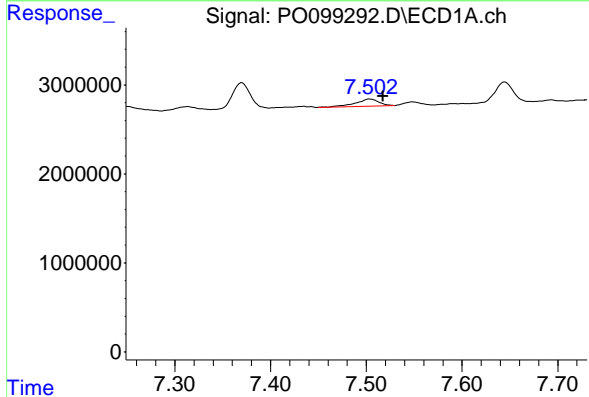
R.T.: 7.246 min
 Delta R.T.: -0.014 min
 Response: 1035687
 Conc: 14.45 ng/ml

Instrument :
 ECD_O
 ClientSampleId :



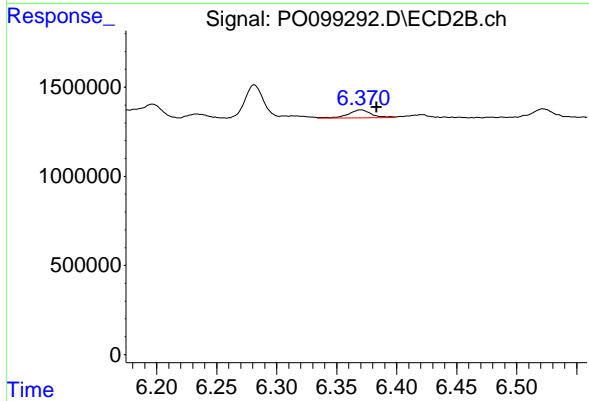
#31 AR-1260-1

R.T.: 6.196 min
 Delta R.T.: 0.001 min
 Response: 1723058
 Conc: 48.85 ng/ml



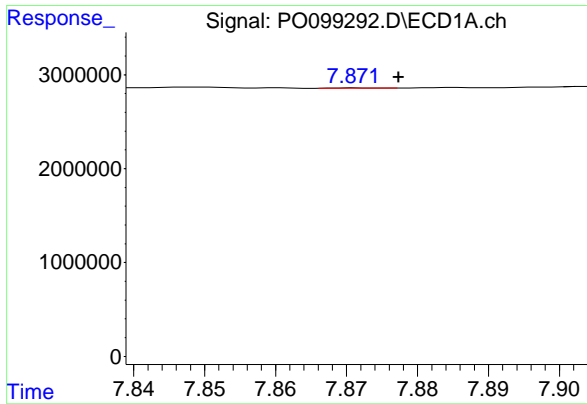
#32 AR-1260-2

R.T.: 7.503 min
 Delta R.T.: -0.014 min
 Response: 1404496
 Conc: 17.80 ng/ml



#32 AR-1260-2

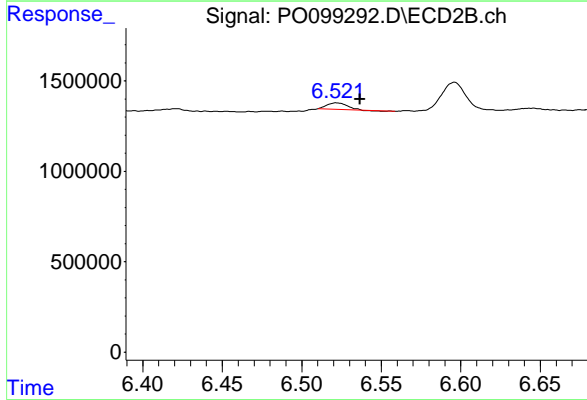
R.T.: 6.370 min
 Delta R.T.: -0.013 min
 Response: 596390
 Conc: 14.88 ng/ml



#33 AR-1260-3

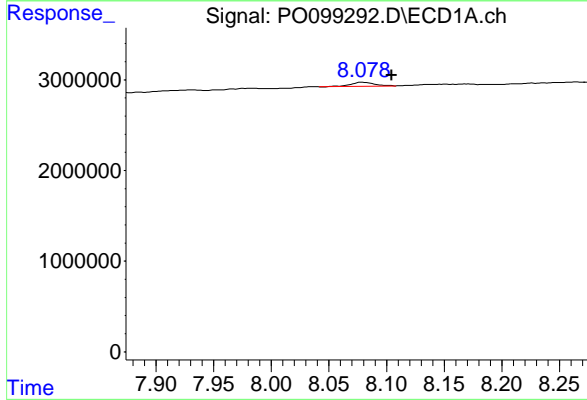
R.T.: 7.872 min
 Delta R.T.: -0.005 min
 Response: 15410
 Conc: 0.28 ng/ml

Instrument :
 ECD_O
 ClientSampleId :



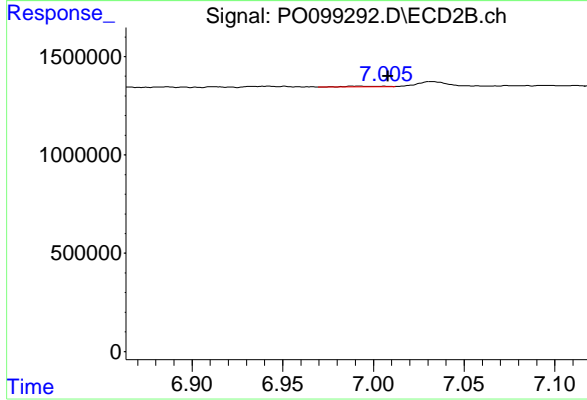
#33 AR-1260-3

R.T.: 6.522 min
 Delta R.T.: -0.015 min
 Response: 315365
 Conc: 8.34 ng/ml



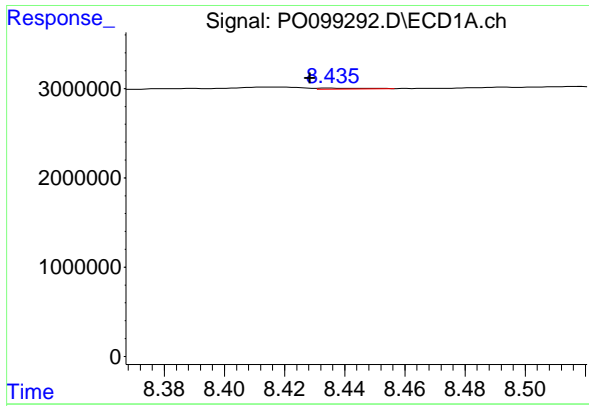
#34 AR-1260-4

R.T.: 8.079 min
 Delta R.T.: -0.026 min
 Response: 622231
 Conc: 9.93 ng/ml



#34 AR-1260-4

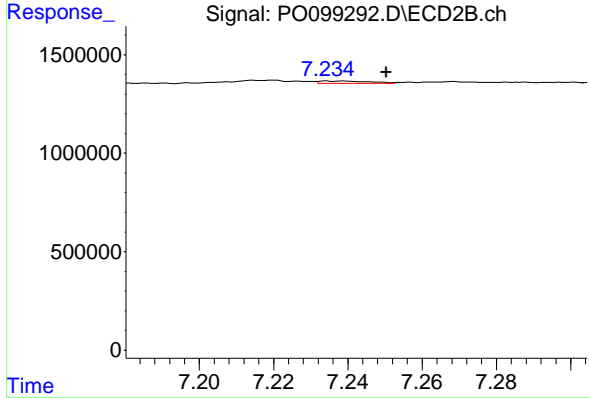
R.T.: 6.992 min
 Delta R.T.: -0.016 min
 Response: 61132
 Conc: 2.12 ng/ml



#35 AR-1260-5

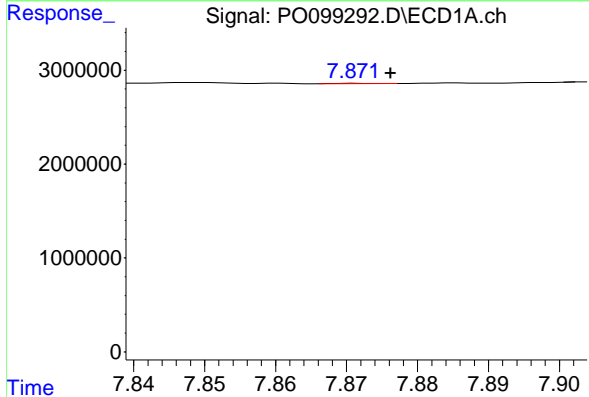
R.T.: 8.435 min
 Delta R.T.: 0.007 min
 Response: 109372
 Conc: 1.02 ng/ml

Instrument :
 ECD_O
 ClientSampleId :



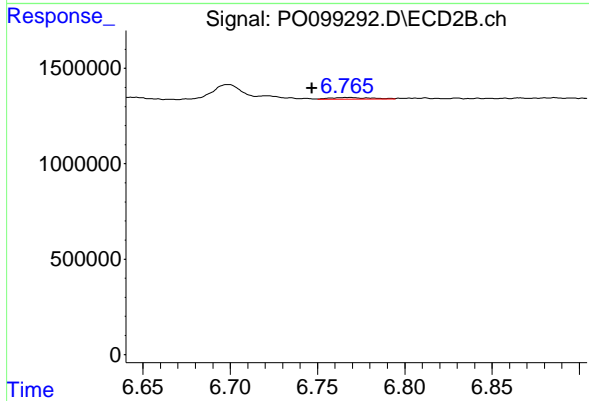
#35 AR-1260-5

R.T.: 7.234 min
 Delta R.T.: -0.016 min
 Response: 108679
 Conc: 1.81 ng/ml



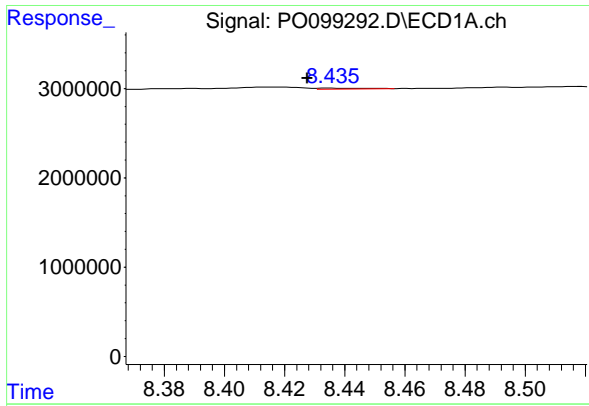
#36 AR-1262-1

R.T.: 7.872 min
 Delta R.T.: -0.004 min
 Response: 15410
 Conc: 0.17 ng/ml



#36 AR-1262-1

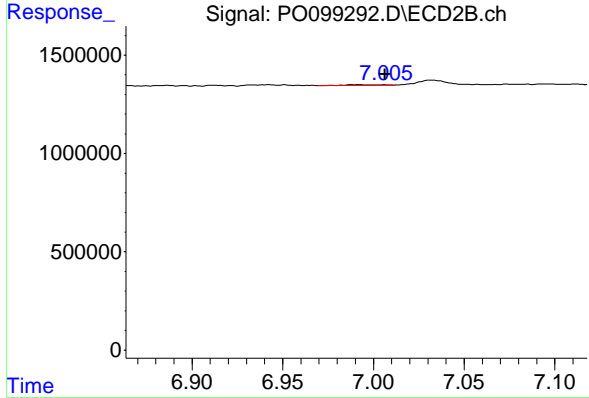
R.T.: 6.768 min
 Delta R.T.: 0.021 min
 Response: 154811
 Conc: 3.30 ng/ml



#37 AR-1262-2

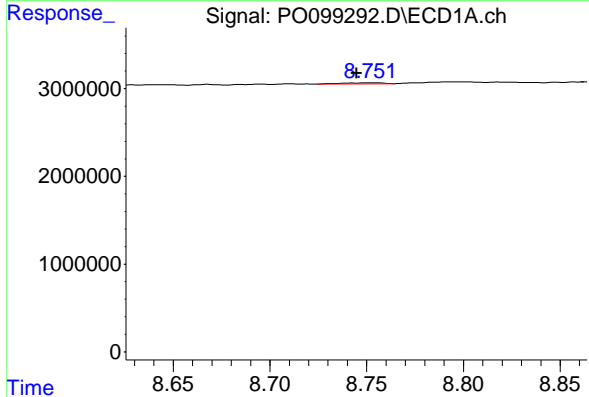
R.T.: 8.435 min
 Delta R.T.: 0.008 min
 Response: 109372
 Conc: 0.82 ng/ml

Instrument :
 ECD_O
 ClientSampleId :



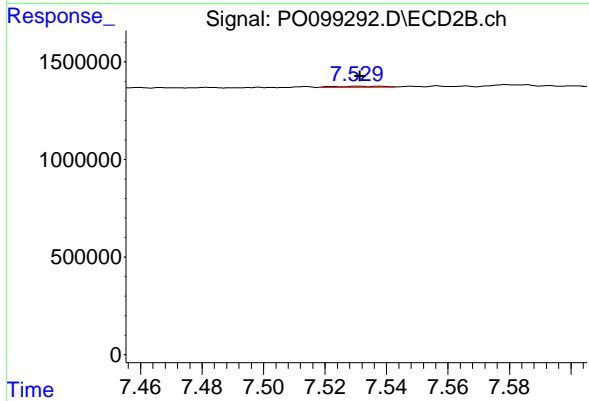
#37 AR-1262-2

R.T.: 6.992 min
 Delta R.T.: -0.015 min
 Response: 61132
 Conc: 1.47 ng/ml



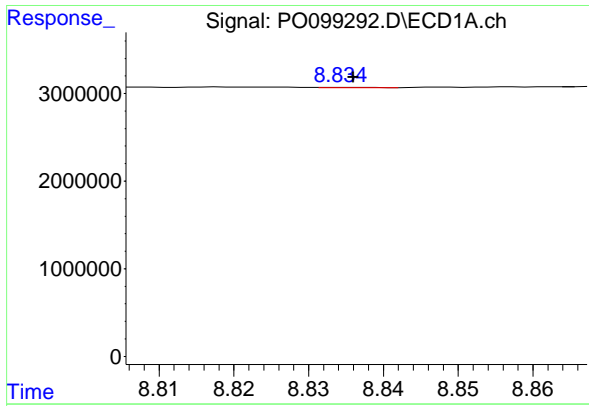
#38 AR-1262-3

R.T.: 8.751 min
 Delta R.T.: 0.006 min
 Response: 184176
 Conc: 1.87 ng/ml



#38 AR-1262-3

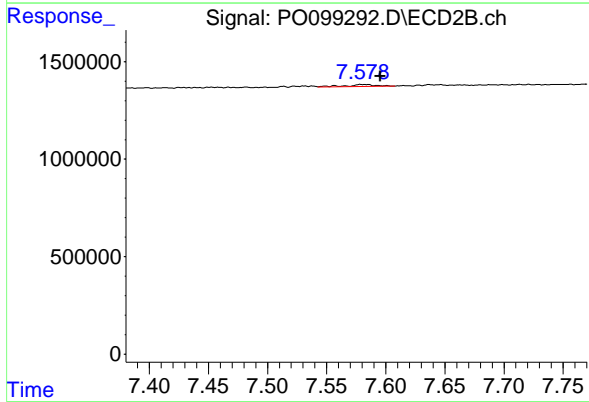
R.T.: 7.538 min
 Delta R.T.: 0.007 min
 Response: 68145
 Conc: 2.13 ng/ml



#39 AR-1262-4

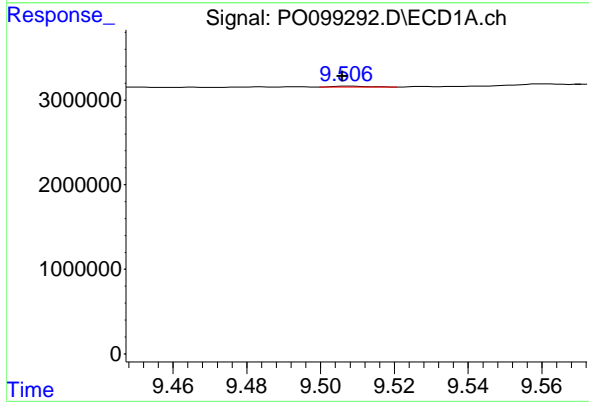
R.T.: 8.835 min
 Delta R.T.: -0.001 min
 Response: 17841
 Conc: 0.22 ng/ml

Instrument :
 ECD_O
 ClientSampleId :



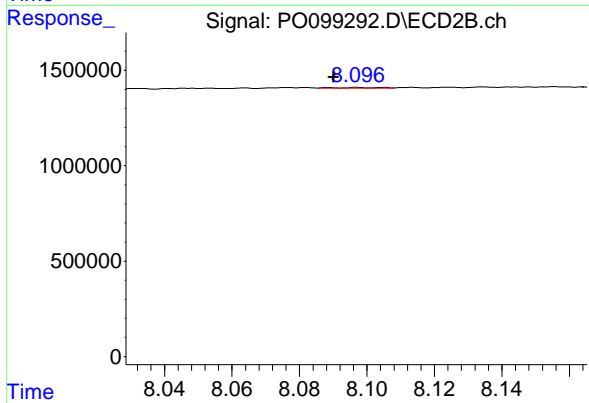
#39 AR-1262-4

R.T.: 7.579 min
 Delta R.T.: -0.016 min
 Response: 187606
 Conc: 3.41 ng/ml



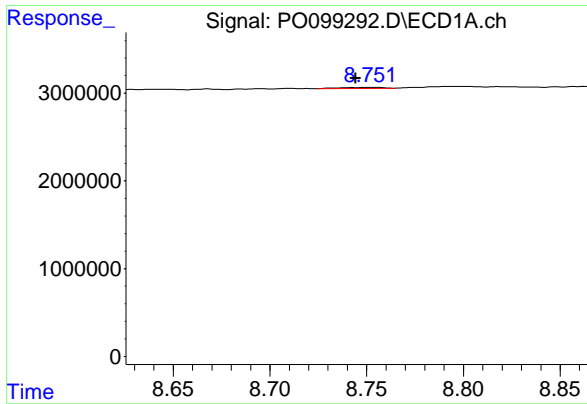
#40 AR-1262-5

R.T.: 9.508 min
 Delta R.T.: 0.002 min
 Response: 73764
 Conc: 1.68 ng/ml



#40 AR-1262-5

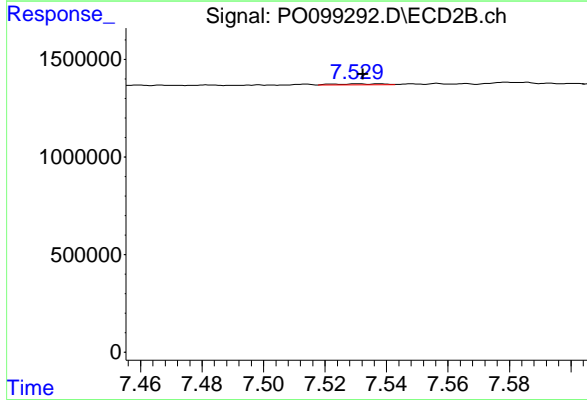
R.T.: 8.088 min
 Delta R.T.: -0.002 min
 Response: 35759
 Conc: 1.42 ng/ml



#41 AR-1268-1

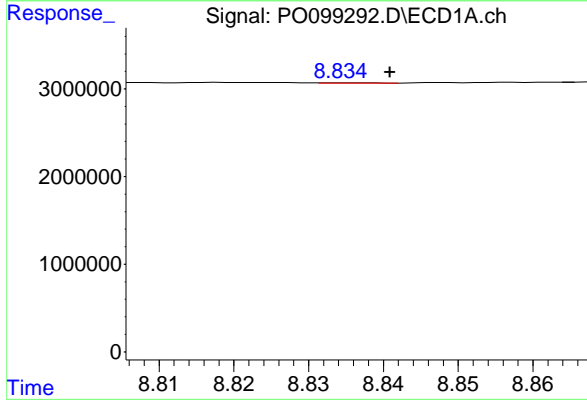
R.T.: 8.751 min
 Delta R.T.: 0.007 min
 Response: 184176
 Conc: 1.07 ng/ml

Instrument :
 ECD_O
 ClientSampleId :



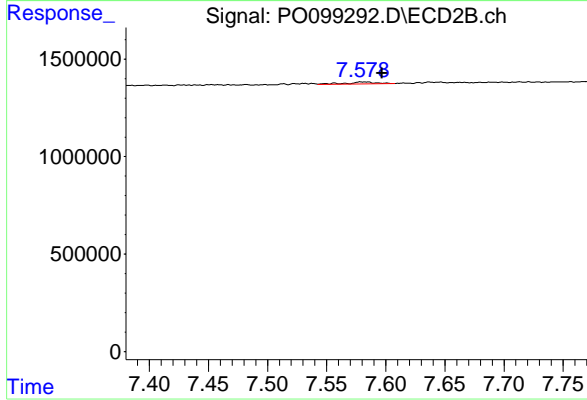
#41 AR-1268-1

R.T.: 7.538 min
 Delta R.T.: 0.006 min
 Response: 68145
 Conc: 0.76 ng/ml



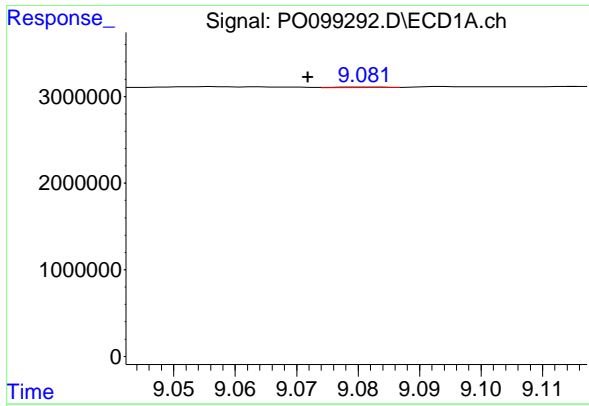
#42 AR-1268-2

R.T.: 8.835 min
 Delta R.T.: -0.006 min
 Response: 17841
 Conc: 0.11 ng/ml



#42 AR-1268-2

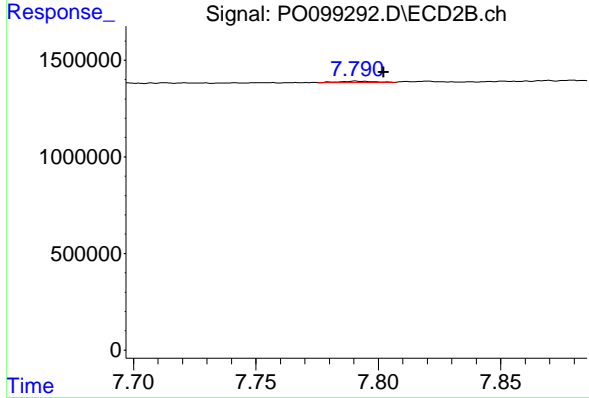
R.T.: 7.579 min
 Delta R.T.: -0.018 min
 Response: 187606
 Conc: 2.38 ng/ml



#43 AR-1268-3

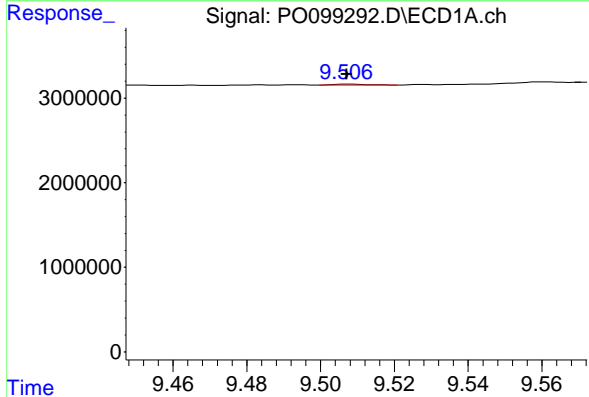
R.T.: 9.081 min
 Delta R.T.: 0.009 min
 Response: 42929
 Conc: 0.31 ng/ml

Instrument :
 ECD_O
 ClientSampleId :



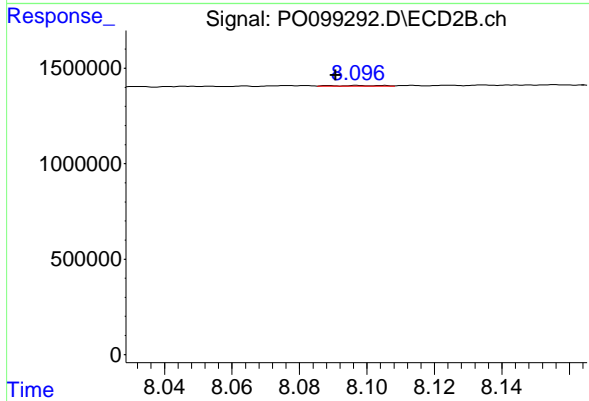
#43 AR-1268-3

R.T.: 7.791 min
 Delta R.T.: -0.011 min
 Response: 74457
 Conc: 1.06 ng/ml



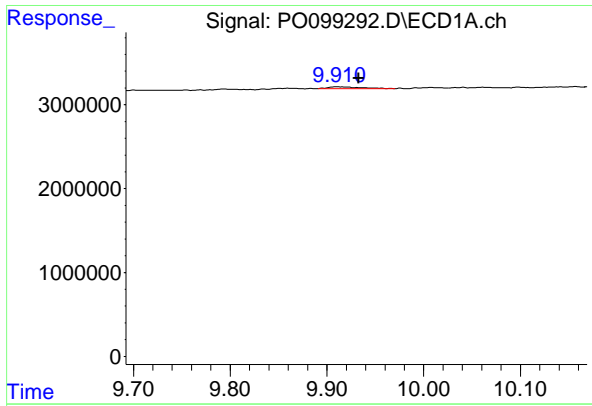
#44 AR-1268-4

R.T.: 9.508 min
 Delta R.T.: 0.000 min
 Response: 73764
 Conc: 1.47 ng/ml



#44 AR-1268-4

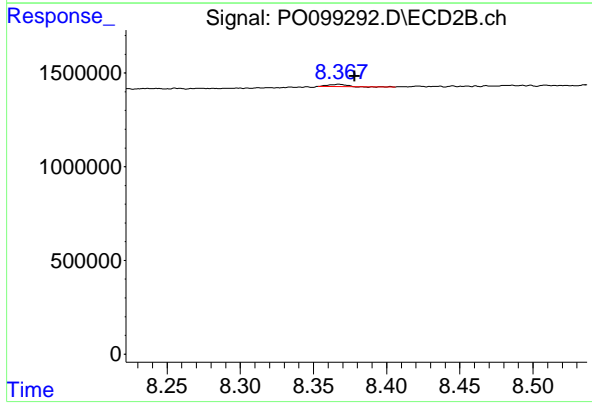
R.T.: 8.088 min
 Delta R.T.: -0.002 min
 Response: 35759
 Conc: 1.30 ng/ml



#45 AR-1268-5

R.T.: 9.911 min
Delta R.T.: -0.022 min
Response: 550252
Conc: 1.34 ng/ml

Instrument :
ECD_O
ClientSampleId :



#45 AR-1268-5

R.T.: 8.368 min
Delta R.T.: -0.010 min
Response: 81030
Conc: 0.43 ng/ml