

Data Path : Z:\pestpcbsrv\HPCHEM1\ECD\_O\Data\PO110223\  
 Data File : PO099302.D  
 Signal(s) : Signal #1: ECD1A.ch Signal #2: ECD2B.ch  
 Acq On : 02 Nov 2023 19:16  
 Operator : YP/AJ  
 Sample : 05215-01  
 Misc :  
 ALS Vial : 23 Sample Multiplier: 1

Instrument :  
 ECD\_O  
 ClientSampleId :

Integration File signal 1: autoint1.e  
 Integration File signal 2: autoint2.e  
 Quant Time: Nov 02 23:20:31 2023  
 Quant Method : Z:\pestpcbsrv\HPCHEM1\ECD\_O\methods\PO102523.M  
 Quant Title : GC EXTRACTABLES  
 QLast Update : Wed Oct 25 06:04:36 2023  
 Response via : Initial Calibration  
 Integrator: ChemStation

Volume Inj. : 2 µl  
 Signal #1 Phase : ZB-MR2 Signal #2 Phase: ZB-MR2  
 Signal #1 Info : 30Mx0.32mmx 0.50µ Signal #2 Info : 30M x 0.32mm x 0.25µm

Compound	RT#1	RT#2	Resp#1	Resp#2	ng/ml	ng/ml
-----						
System Monitoring Compounds						
1) SA Tetrachlo...	4.467	3.623	41310007	15261118	20.907	21.205
2) SA Decachlor...	10.258	8.613	23511238	9526696	20.754	17.756
Target Compounds						
3) L1 AR-1016-1	5.642	4.697	897149	239296	16.292	10.686 #
4) L1 AR-1016-2	5.673	4.730	1093282	393666	13.221	12.595
5) L1 AR-1016-3	5.745	4.922	2129293	54019	41.368	3.190 #
6) L1 AR-1016-4	5.858	4.938	662366	174198	16.297	12.049 #
7) L1 AR-1016-5	6.150	5.184	31652	179435	0.746	9.605 #
8) L2 AR-1221-1	4.676	3.838	5866107	52707	236.267	5.674 #
9) L2 AR-1221-2	4.774	3.950	830855	85867	44.913	13.243 #
10) L2 AR-1221-3	4.854	4.014	316784	8278	5.847	0.409 #
11) L3 AR-1232-1	4.854	4.014	316784	8278	6.925	0.483 #
12) L3 AR-1232-2	5.374	4.730	2200933	393666	93.203	25.696 #
13) L3 AR-1232-3	5.673	4.893	1093282	116734	27.683	14.589 #
14) L3 AR-1232-4	5.858	4.988	662366	152681	34.717	19.845 #
15) L3 AR-1232-5	5.920	5.184	135480	179435	8.133	21.096 #
16) L4 AR-1242-1	5.642	4.697	897149	239296	20.723	13.620 #
17) L4 AR-1242-2	5.673	4.730	1093282	393666	17.070	16.245
18) L4 AR-1242-3	5.745	4.893	2129293	116734	52.934	9.105 #
19) L4 AR-1242-4	5.858	4.988	662366	152681	21.167	10.846 #
20) L4 AR-1242-5	6.574	5.506	601628	1393852	19.503	83.408 #
21) L5 AR-1248-1	5.642	4.697	897149	239296	26.408	17.265 #
22) L5 AR-1248-2	5.920	4.938	135480	174198	2.589	8.770 #
23) L5 AR-1248-3	6.150	4.988	31652	152681	0.556	7.322 #
24) L5 AR-1248-4	6.532	5.184	844493	179435	15.486	7.299 #
25) L5 AR-1248-5	6.574	5.553	601628	816961	10.591	37.616 #
26) L6 AR-1254-1	6.499	5.506	814417	1393852	12.372	39.337 #
27) L6 AR-1254-2	6.725	5.649	2162491	959673	22.463	30.004 #
28) L6 AR-1254-3	7.089	6.069	2457630	967671	27.495	19.794 #
29) L6 AR-1254-4	7.367	6.277	318534	484418	5.814	18.484 #
30) L6 AR-1254-5	7.809	6.697	1036998	688088	15.401	16.323
31) L7 AR-1260-1	7.245	6.183	716748	1059612	10.002	30.038 #
32) L7 AR-1260-2	7.497	6.370	2059787	632424	26.107	15.776 #
33) L7 AR-1260-3	7.866	6.521	330019	224715	6.043	5.943
34) L7 AR-1260-4	8.132	6.991	89474	261968	1.428	9.066 #
35) L7 AR-1260-5	8.416	7.237	1136796	551405	10.623	9.163
36) L8 AR-1262-1	7.866	6.736	330019	248046	3.646	5.286 #
37) L8 AR-1262-2	8.416	6.991	1136796	261968	8.528	6.310 #
38) L8 AR-1262-3	8.748	7.521	261906	189469	2.663	5.931 #
39) L8 AR-1262-4	8.823	7.581	904594	639246	11.292	11.627
40) L8 AR-1262-5	9.485	8.080	190273	50023	4.330	1.992 #
41) L9 AR-1268-1	8.748	7.521	261906	189469	1.521	2.124 #

Data Path : Z:\pestpcbsrv\HPCHEM1\ECD\_0\Data\P0110223\  
 Data File : P0099302.D  
 Signal(s) : Signal #1: ECD1A.ch Signal #2: ECD2B.ch  
 Acq On : 02 Nov 2023 19:16  
 Operator : YP/AJ  
 Sample : 05215-01  
 Misc :  
 ALS Vial : 23 Sample Multiplier: 1

Instrument :  
 ECD\_0  
 ClientSampleId :

Integration File signal 1: autoint1.e  
 Integration File signal 2: autoint2.e  
 Quant Time: Nov 02 23:20:31 2023  
 Quant Method : Z:\pestpcbsrv\HPCHEM1\ECD\_0\methods\P0102523.M  
 Quant Title : GC EXTRACTABLES  
 QLast Update : Wed Oct 25 06:04:36 2023  
 Response via : Initial Calibration  
 Integrator: ChemStation

Volume Inj. : 2 µl  
 Signal #1 Phase : ZB-MR1 Signal #2 Phase: ZB-MR2  
 Signal #1 Info : 30Mx0.32mmx 0.50µ Signal #2 Info : 30M x 0.32mm x 0.25µm

	Compound	RT#1	RT#2	Resp#1	Resp#2	ng/ml	ng/ml
42)	L9 AR-1268-2	8.823	7.581	904594	639246	5.769	8.096 #
43)	L9 AR-1268-3	9.071	7.786	129870	73296	0.926	1.041
44)	L9 AR-1268-4	9.485	8.080	190273	50023	3.794	1.815 #
45)	L9 AR-1268-5	9.951	8.393	23783	56556	0.058	0.297 #

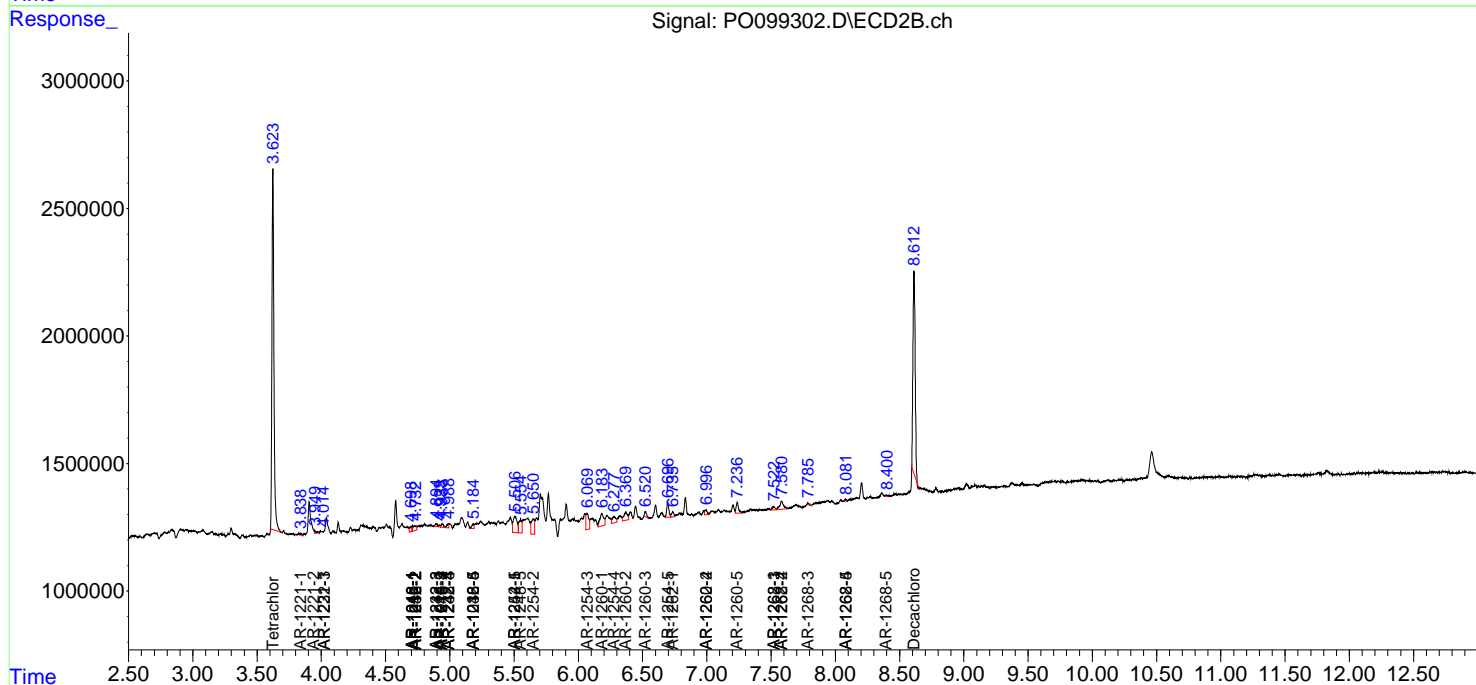
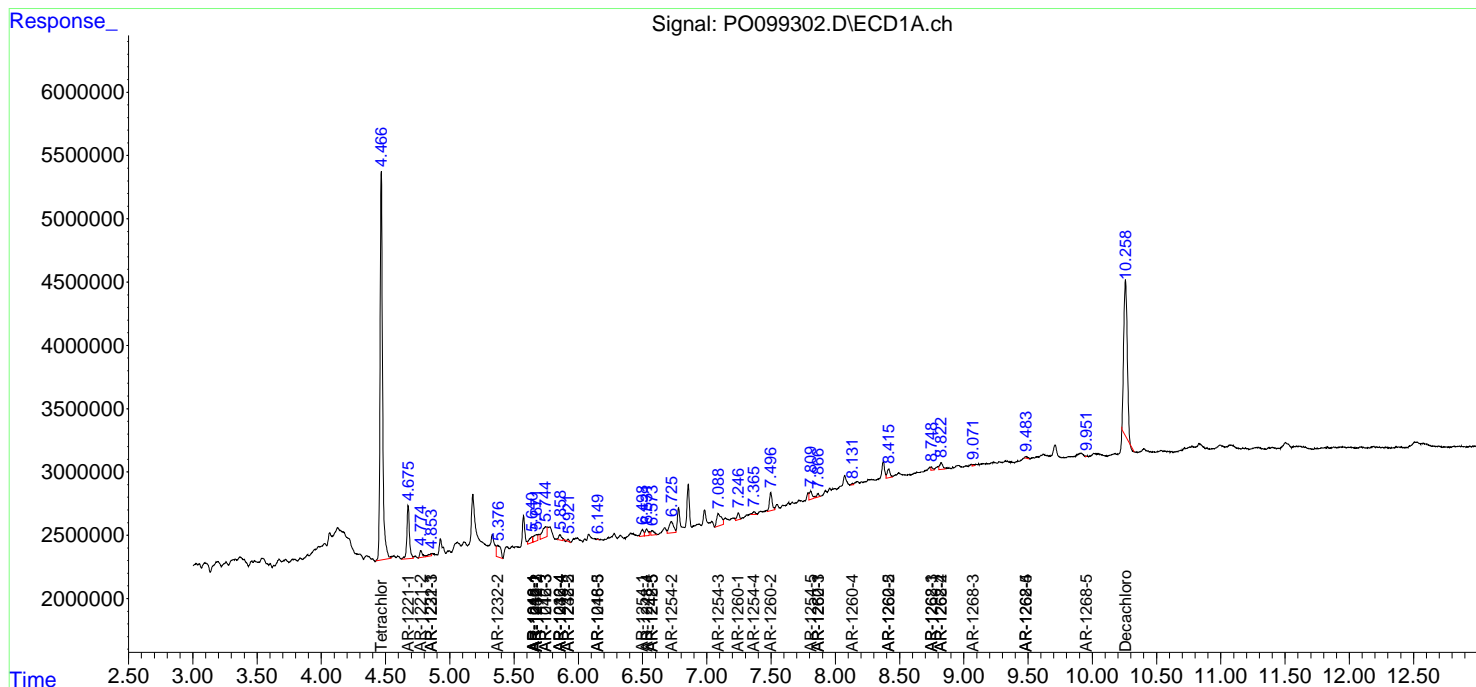
(f)=RT Delta > 1/2 Window (#)=Amounts differ by > 25% (m)=manual int.

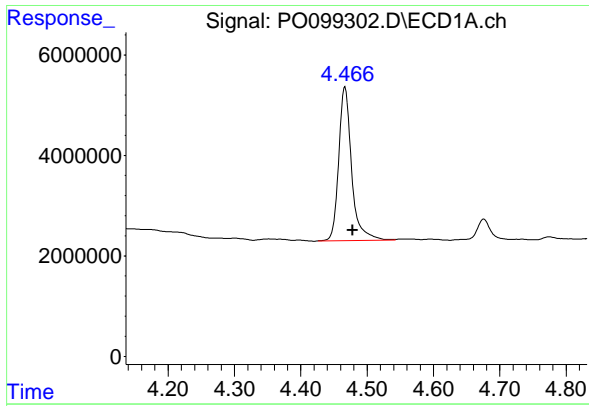
Data Path : Z:\pestpcbsrv\HPCHEM1\ECD\_O\Data\PO110223\  
 Data File : P0099302.D  
 Signal(s) : Signal #1: ECD1A.ch Signal #2: ECD2B.ch  
 Acq On : 02 Nov 2023 19:16  
 Operator : YP/AJ  
 Sample : 05215-01  
 Misc :  
 ALS Vial : 23 Sample Multiplier: 1

Instrument :  
 ECD\_O  
 ClientSampleId :

Integration File signal 1: autoint1.e  
 Integration File signal 2: autoint2.e  
 Quant Time: Nov 02 23:20:31 2023  
 Quant Method : Z:\pestpcbsrv\HPCHEM1\ECD\_O\methods\PO102523.M  
 Quant Title : GC EXTRACTABLES  
 QLast Update : Wed Oct 25 06:04:36 2023  
 Response via : Initial Calibration  
 Integrator: ChemStation

Volume Inj. : 2 µl  
 Signal #1 Phase : ZB-MR1 Signal #2 Phase: ZB-MR2  
 Signal #1 Info : 30Mx0.32mmx 0.50µ Signal #2 Info : 30M x 0.32mm x 0.25µm

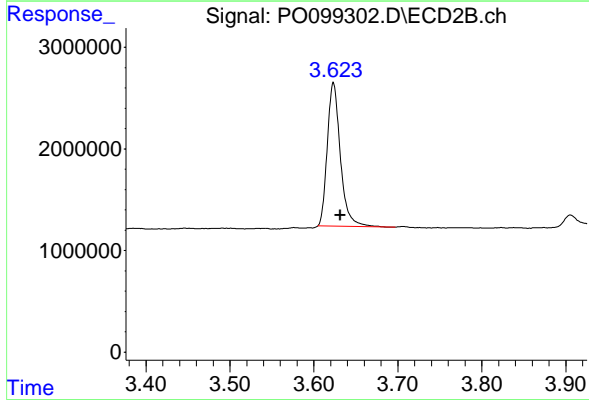




#1 Tetrachloro-m-xylene

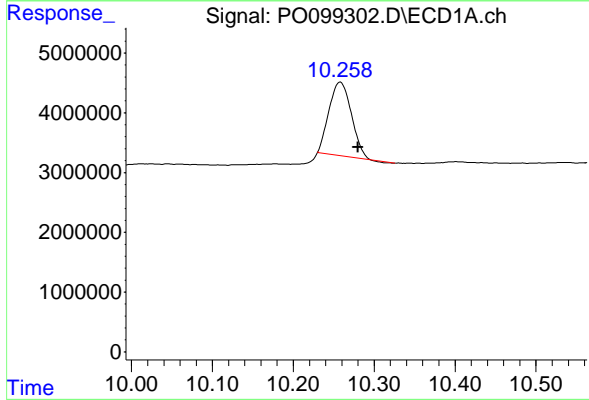
R.T.: 4.467 min  
 Delta R.T.: -0.011 min  
 Response: 41310007  
 Conc: 20.91 ng/ml

Instrument :  
 ECD\_O  
 ClientSampleId :



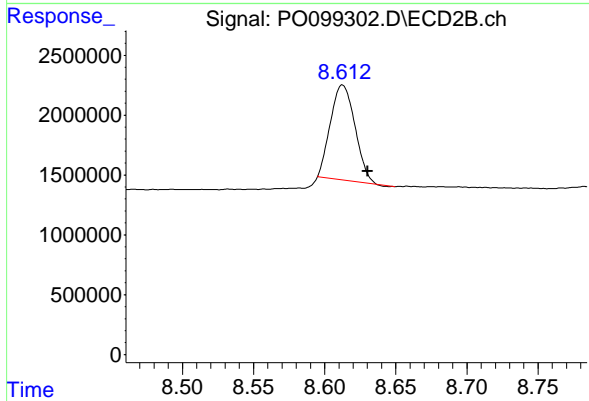
#1 Tetrachloro-m-xylene

R.T.: 3.623 min  
 Delta R.T.: -0.008 min  
 Response: 15261118  
 Conc: 21.21 ng/ml



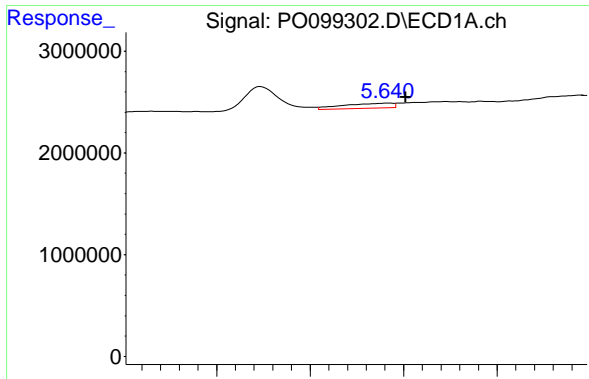
#2 Decachlorobiphenyl

R.T.: 10.258 min  
 Delta R.T.: -0.022 min  
 Response: 23511238  
 Conc: 20.75 ng/ml



#2 Decachlorobiphenyl

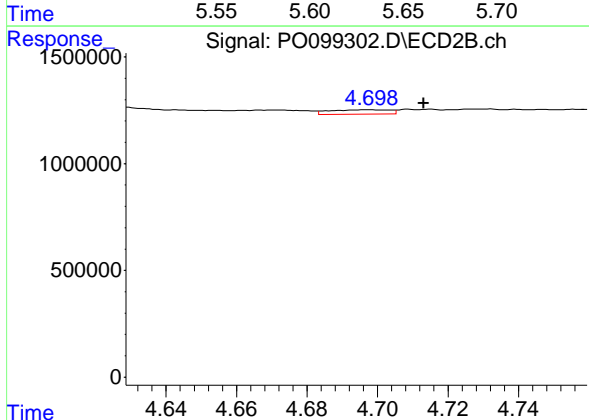
R.T.: 8.613 min  
 Delta R.T.: -0.018 min  
 Response: 9526696  
 Conc: 17.76 ng/ml



#3 AR-1016-1

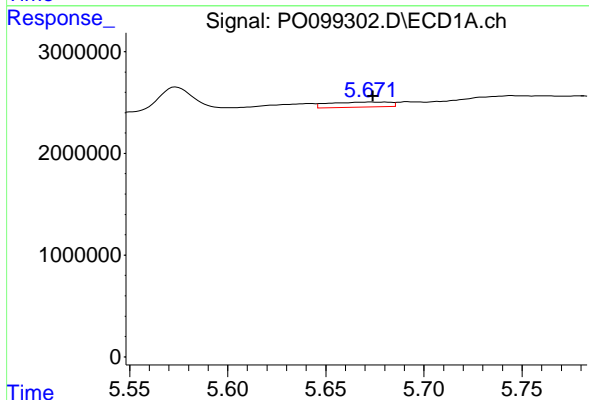
R.T.: 5.642 min  
 Delta R.T.: -0.009 min  
 Response: 897149  
 Conc: 16.29 ng/ml

Instrument :  
 ECD\_O  
 ClientSampleId :



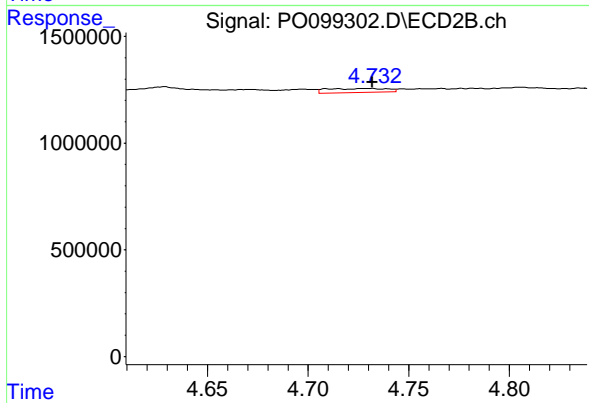
#3 AR-1016-1

R.T.: 4.697 min  
 Delta R.T.: -0.016 min  
 Response: 239296  
 Conc: 10.69 ng/ml



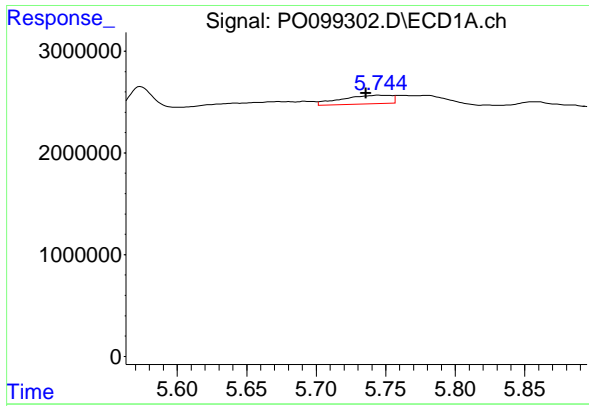
#4 AR-1016-2

R.T.: 5.673 min  
 Delta R.T.: 0.000 min  
 Response: 1093282  
 Conc: 13.22 ng/ml



#4 AR-1016-2

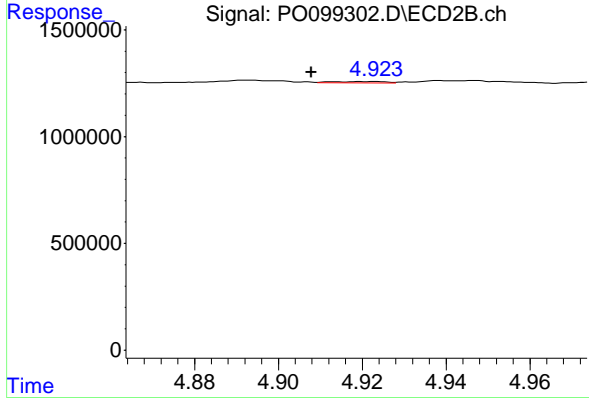
R.T.: 4.730 min  
 Delta R.T.: -0.001 min  
 Response: 393666  
 Conc: 12.59 ng/ml



#5 AR-1016-3

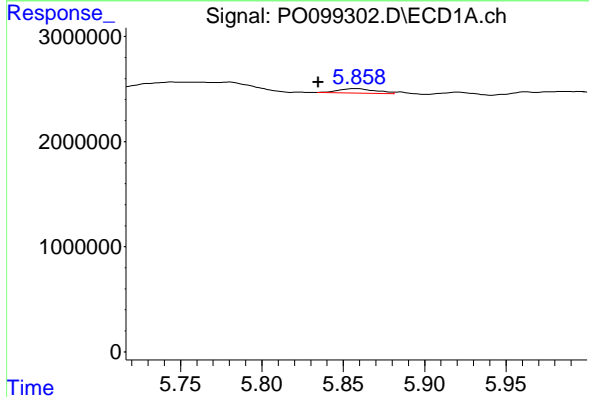
R.T.: 5.745 min  
 Delta R.T.: 0.009 min  
 Response: 2129293  
 Conc: 41.37 ng/ml

Instrument :  
 ECD\_O  
 ClientSampleId :



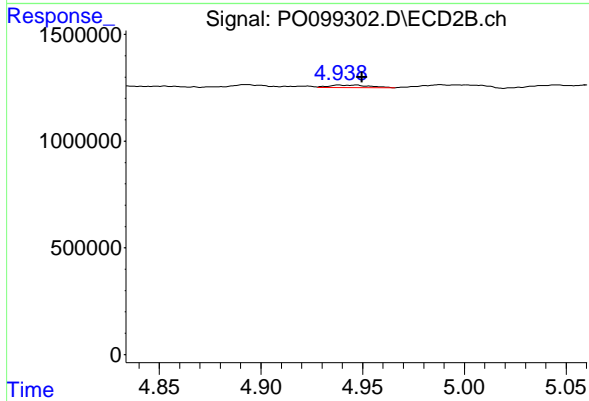
#5 AR-1016-3

R.T.: 4.922 min  
 Delta R.T.: 0.014 min  
 Response: 54019  
 Conc: 3.19 ng/ml



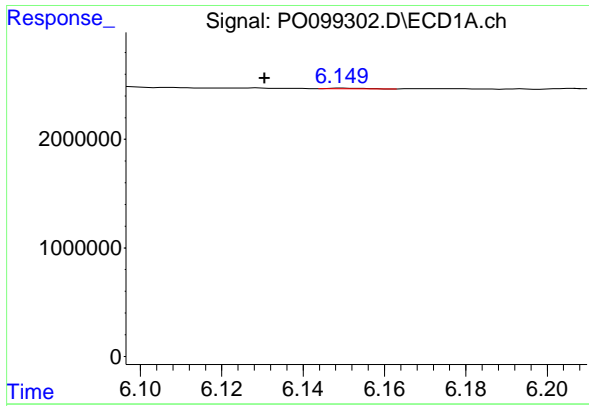
#6 AR-1016-4

R.T.: 5.858 min  
 Delta R.T.: 0.023 min  
 Response: 662366  
 Conc: 16.30 ng/ml



#6 AR-1016-4

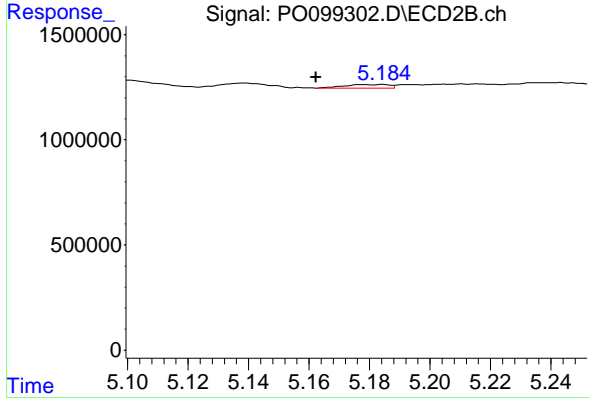
R.T.: 4.938 min  
 Delta R.T.: -0.011 min  
 Response: 174198  
 Conc: 12.05 ng/ml



#7 AR-1016-5

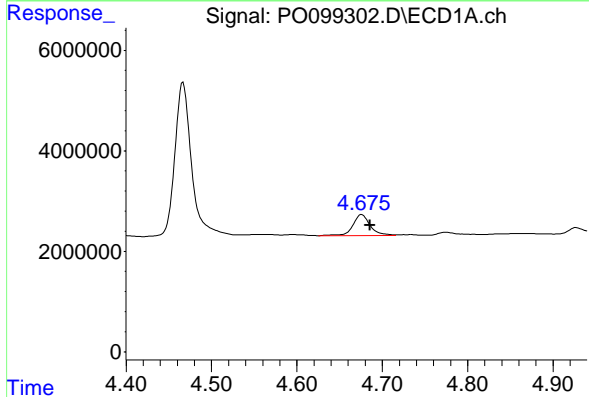
R.T.: 6.150 min  
 Delta R.T.: 0.019 min  
 Response: 31652  
 Conc: 0.75 ng/ml

Instrument :  
 ECD\_O  
 ClientSampleId :



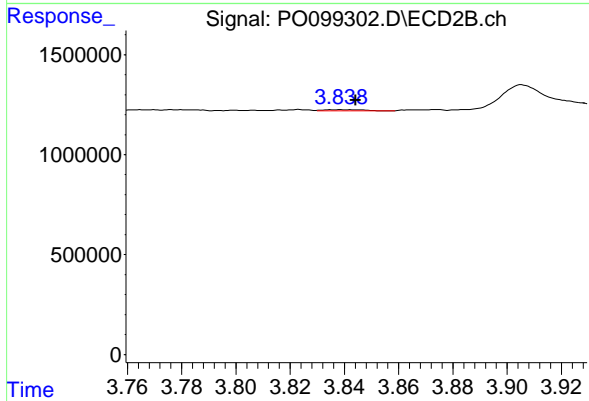
#7 AR-1016-5

R.T.: 5.184 min  
 Delta R.T.: 0.022 min  
 Response: 179435  
 Conc: 9.60 ng/ml



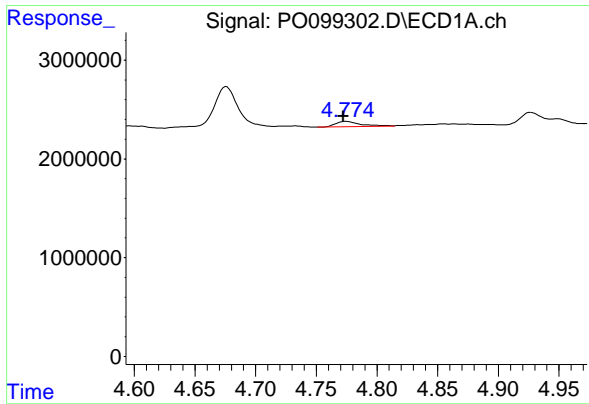
#8 AR-1221-1

R.T.: 4.676 min  
 Delta R.T.: -0.010 min  
 Response: 5866107  
 Conc: 236.27 ng/ml



#8 AR-1221-1

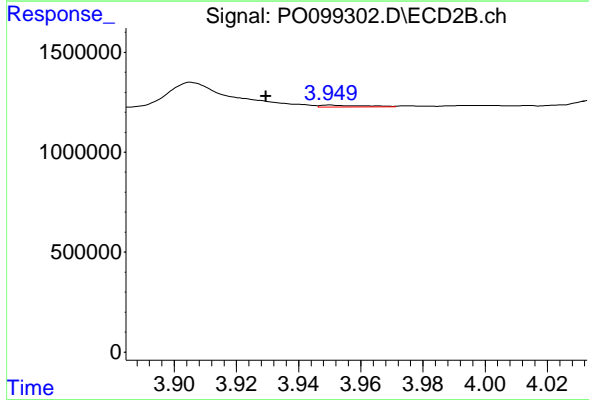
R.T.: 3.838 min  
 Delta R.T.: -0.006 min  
 Response: 52707  
 Conc: 5.67 ng/ml



#9 AR-1221-2

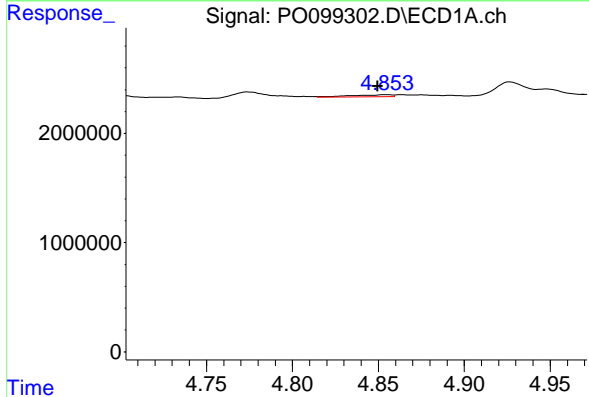
R.T.: 4.774 min  
 Delta R.T.: 0.002 min  
 Response: 830855  
 Conc: 44.91 ng/ml

Instrument :  
 ECD\_O  
 ClientSampleId :



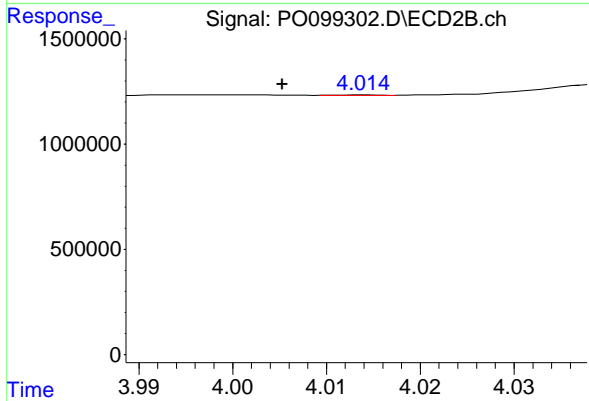
#9 AR-1221-2

R.T.: 3.950 min  
 Delta R.T.: 0.021 min  
 Response: 85867  
 Conc: 13.24 ng/ml



#10 AR-1221-3

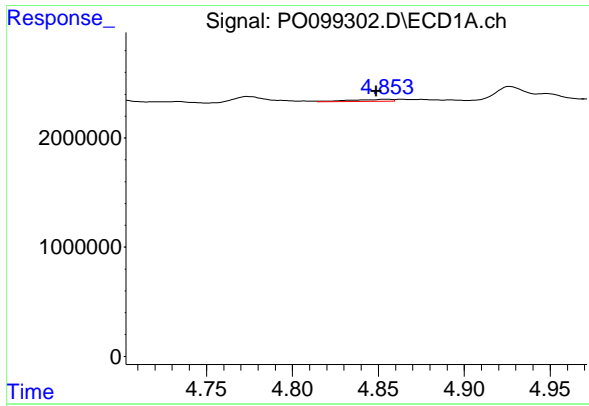
R.T.: 4.854 min  
 Delta R.T.: 0.005 min  
 Response: 316784  
 Conc: 5.85 ng/ml



#10 AR-1221-3

R.T.: 4.014 min  
 Delta R.T.: 0.009 min  
 Response: 8278  
 Conc: 0.41 ng/ml

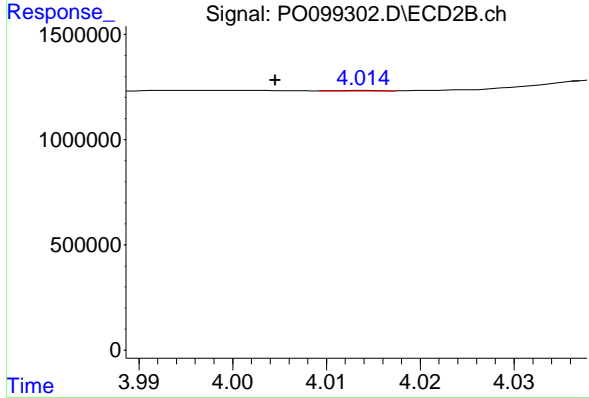




#11 AR-1232-1

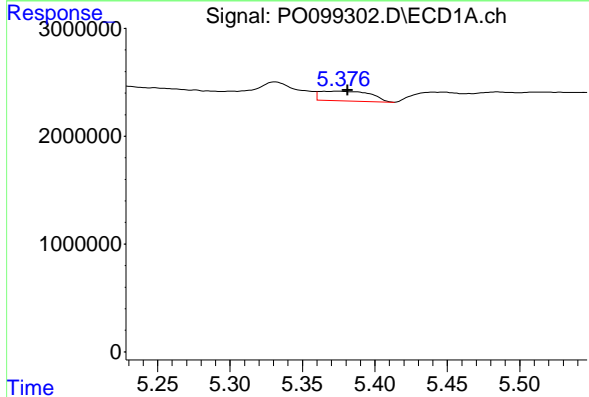
R.T.: 4.854 min  
 Delta R.T.: 0.006 min  
 Response: 316784  
 Conc: 6.92 ng/ml

Instrument :  
 ECD\_O  
 ClientSampleId :



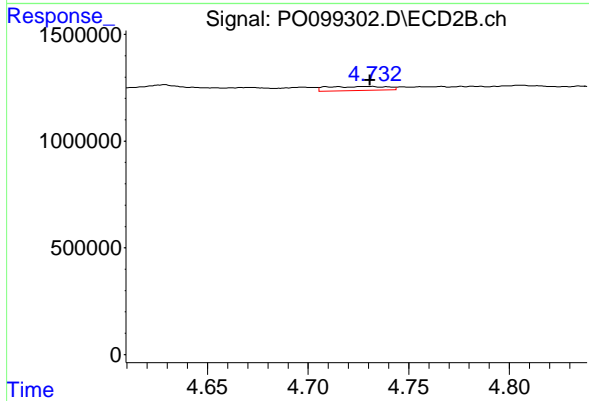
#11 AR-1232-1

R.T.: 4.014 min  
 Delta R.T.: 0.009 min  
 Response: 8278  
 Conc: 0.48 ng/ml



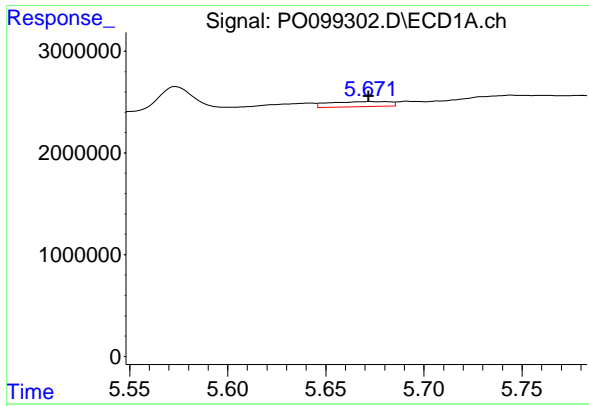
#12 AR-1232-2

R.T.: 5.374 min  
 Delta R.T.: -0.007 min  
 Response: 2200933  
 Conc: 93.20 ng/ml



#12 AR-1232-2

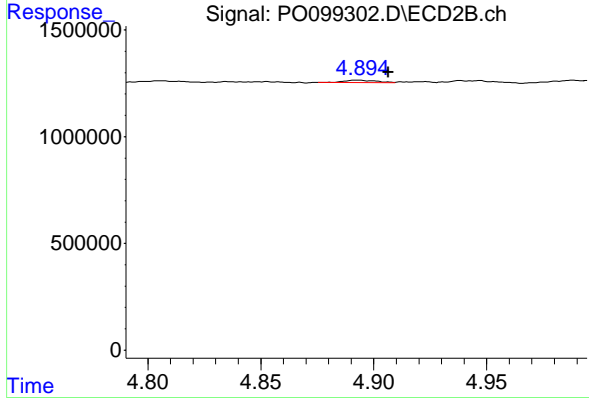
R.T.: 4.730 min  
 Delta R.T.: 0.000 min  
 Response: 393666  
 Conc: 25.70 ng/ml



#13 AR-1232-3

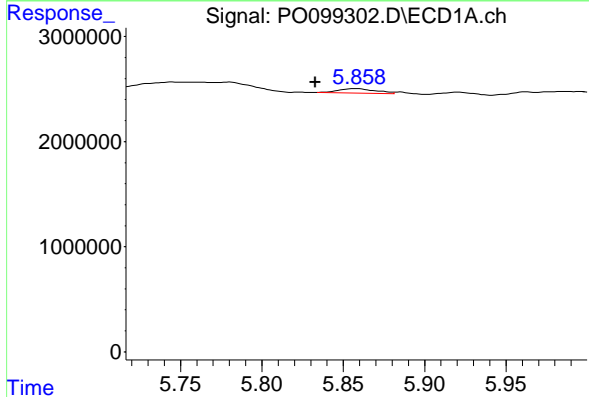
R.T.: 5.673 min  
 Delta R.T.: 0.001 min  
 Response: 1093282  
 Conc: 27.68 ng/ml

Instrument :  
 ECD\_O  
 ClientSampleId :



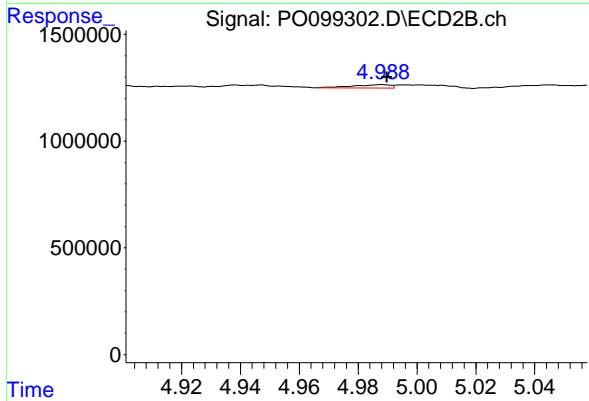
#13 AR-1232-3

R.T.: 4.893 min  
 Delta R.T.: -0.013 min  
 Response: 116734  
 Conc: 14.59 ng/ml



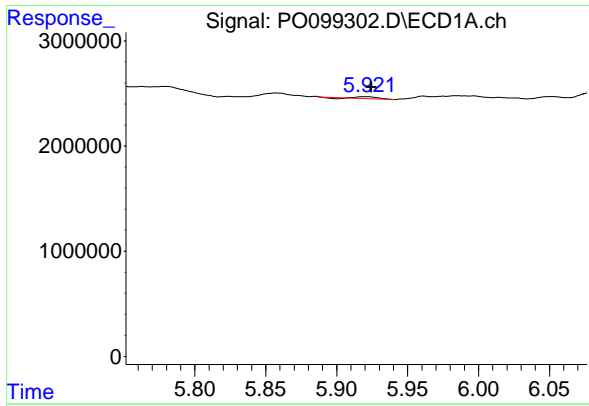
#14 AR-1232-4

R.T.: 5.858 min  
 Delta R.T.: 0.025 min  
 Response: 662366  
 Conc: 34.72 ng/ml



#14 AR-1232-4

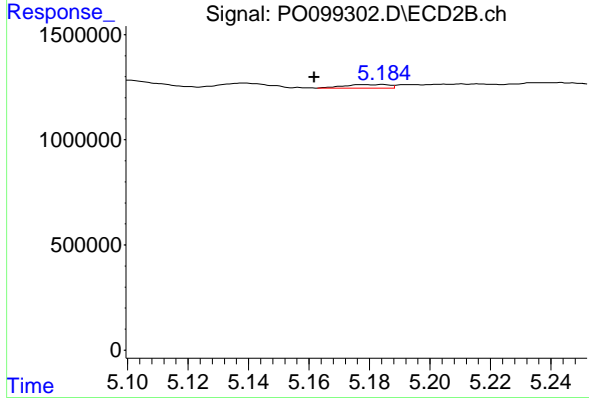
R.T.: 4.988 min  
 Delta R.T.: -0.002 min  
 Response: 152681  
 Conc: 19.84 ng/ml



#15 AR-1232-5

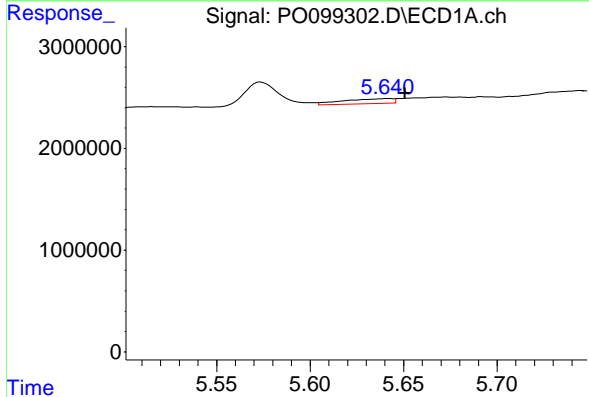
R.T.: 5.920 min  
 Delta R.T.: -0.004 min  
 Response: 135480  
 Conc: 8.13 ng/ml

Instrument :  
 ECD\_O  
 ClientSampleId :



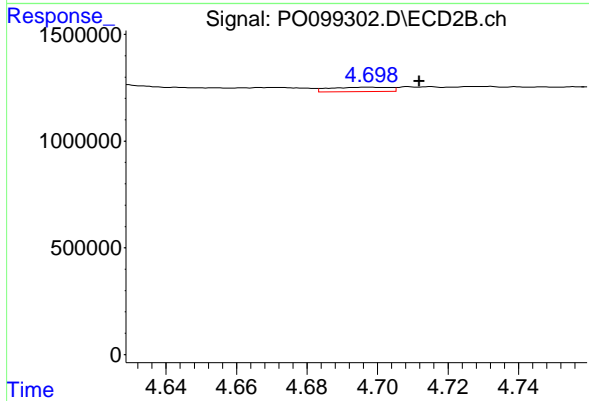
#15 AR-1232-5

R.T.: 5.184 min  
 Delta R.T.: 0.022 min  
 Response: 179435  
 Conc: 21.10 ng/ml



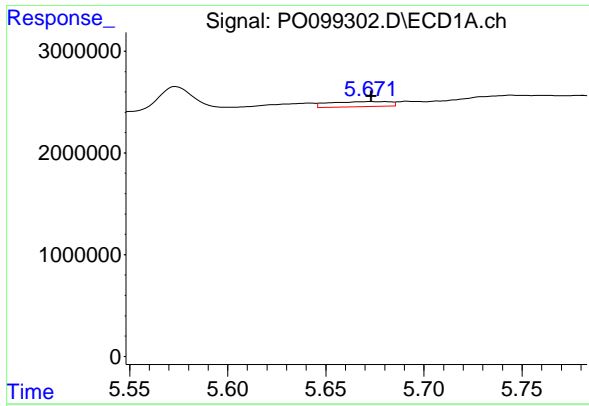
#16 AR-1242-1

R.T.: 5.642 min  
 Delta R.T.: -0.009 min  
 Response: 897149  
 Conc: 20.72 ng/ml



#16 AR-1242-1

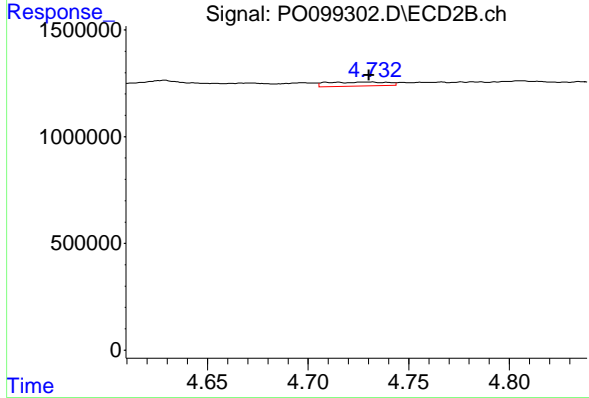
R.T.: 4.697 min  
 Delta R.T.: -0.015 min  
 Response: 239296  
 Conc: 13.62 ng/ml



#17 AR-1242-2

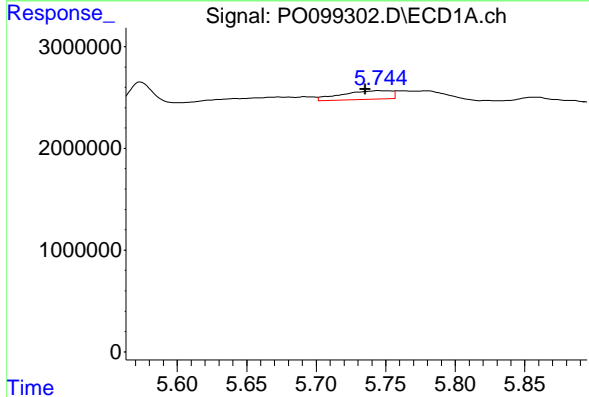
R.T.: 5.673 min  
 Delta R.T.: 0.000 min  
 Response: 1093282  
 Conc: 17.07 ng/ml

Instrument :  
 ECD\_O  
 ClientSampleId :



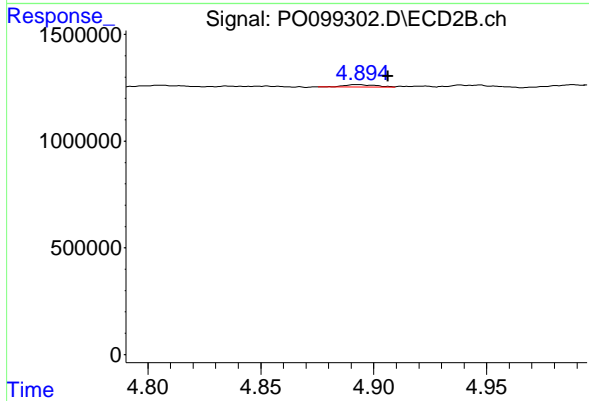
#17 AR-1242-2

R.T.: 4.730 min  
 Delta R.T.: 0.000 min  
 Response: 393666  
 Conc: 16.24 ng/ml



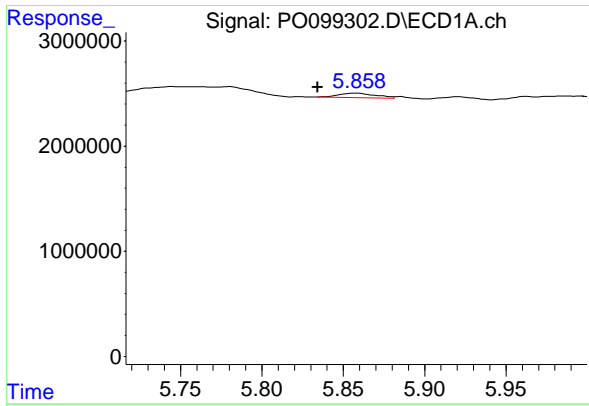
#18 AR-1242-3

R.T.: 5.745 min  
 Delta R.T.: 0.009 min  
 Response: 2129293  
 Conc: 52.93 ng/ml



#18 AR-1242-3

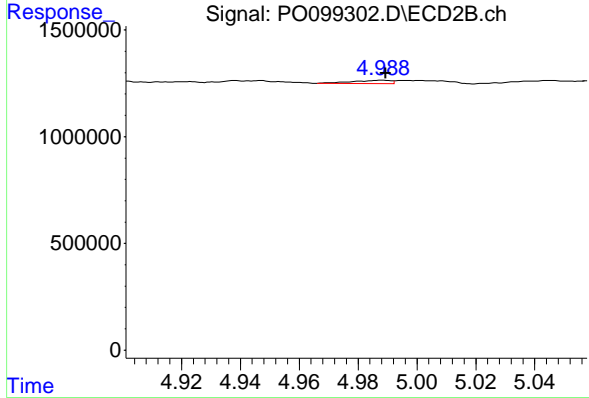
R.T.: 4.893 min  
 Delta R.T.: -0.013 min  
 Response: 116734  
 Conc: 9.11 ng/ml



#19 AR-1242-4

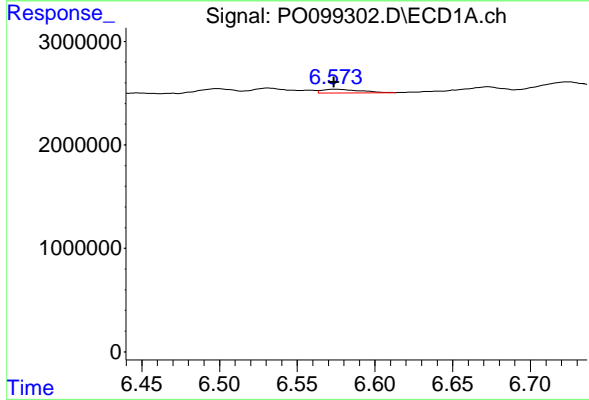
R.T.: 5.858 min  
 Delta R.T.: 0.024 min  
 Response: 662366  
 Conc: 21.17 ng/ml

Instrument :  
 ECD\_O  
 ClientSampleId :



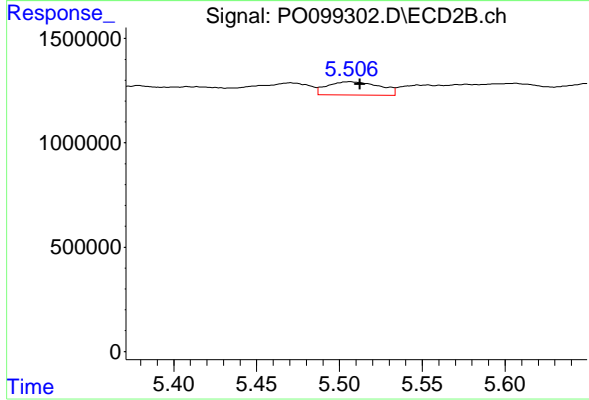
#19 AR-1242-4

R.T.: 4.988 min  
 Delta R.T.: -0.001 min  
 Response: 152681  
 Conc: 10.85 ng/ml



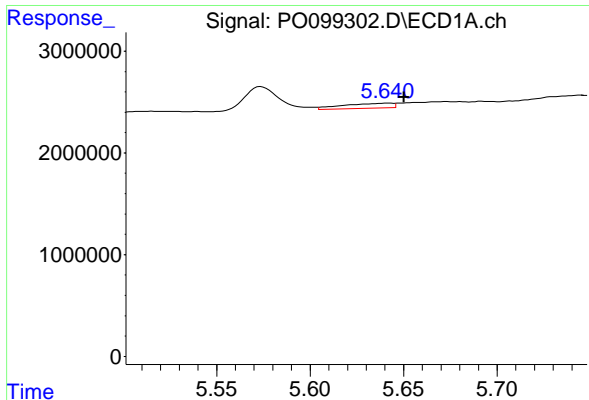
#20 AR-1242-5

R.T.: 6.574 min  
 Delta R.T.: 0.000 min  
 Response: 601628  
 Conc: 19.50 ng/ml



#20 AR-1242-5

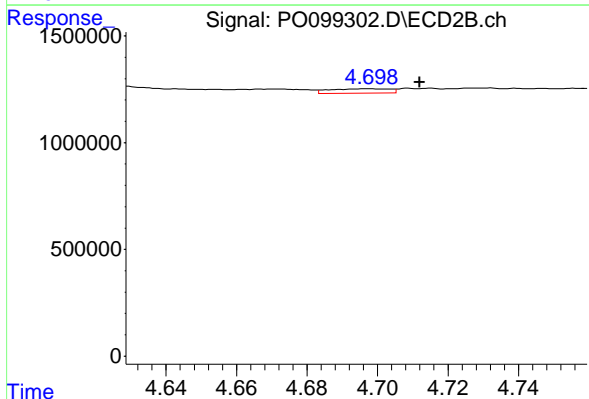
R.T.: 5.506 min  
 Delta R.T.: -0.006 min  
 Response: 1393852  
 Conc: 83.41 ng/ml



#21 AR-1248-1

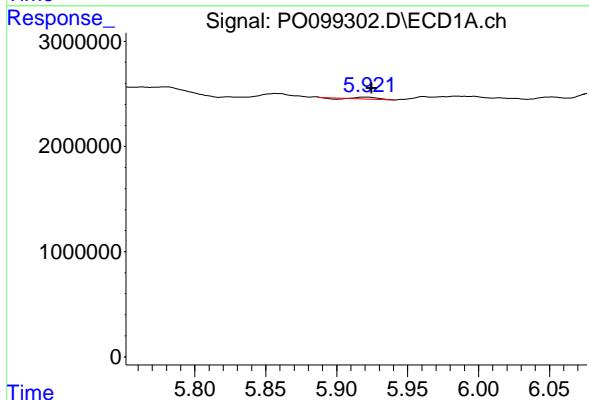
R.T.: 5.642 min  
 Delta R.T.: -0.008 min  
 Response: 897149  
 Conc: 26.41 ng/ml

Instrument :  
 ECD\_O  
 ClientSampleId :



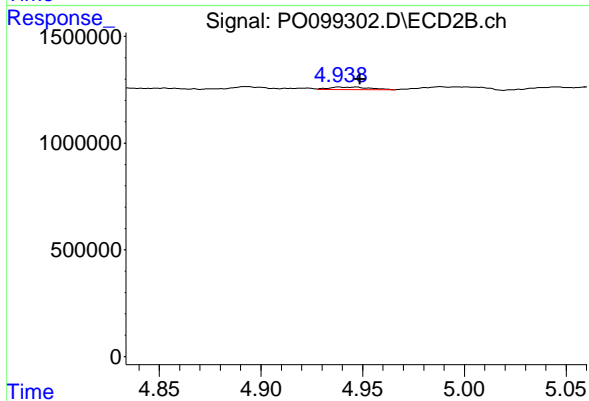
#21 AR-1248-1

R.T.: 4.697 min  
 Delta R.T.: -0.015 min  
 Response: 239296  
 Conc: 17.27 ng/ml



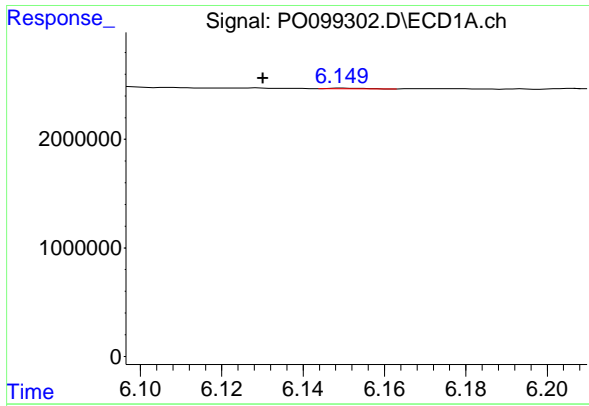
#22 AR-1248-2

R.T.: 5.920 min  
 Delta R.T.: -0.004 min  
 Response: 135480  
 Conc: 2.59 ng/ml



#22 AR-1248-2

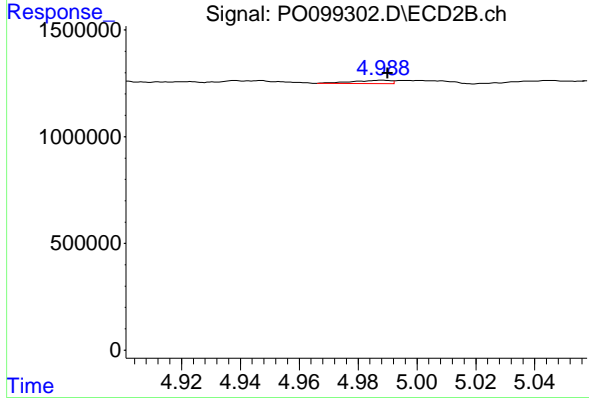
R.T.: 4.938 min  
 Delta R.T.: -0.010 min  
 Response: 174198  
 Conc: 8.77 ng/ml



#23 AR-1248-3

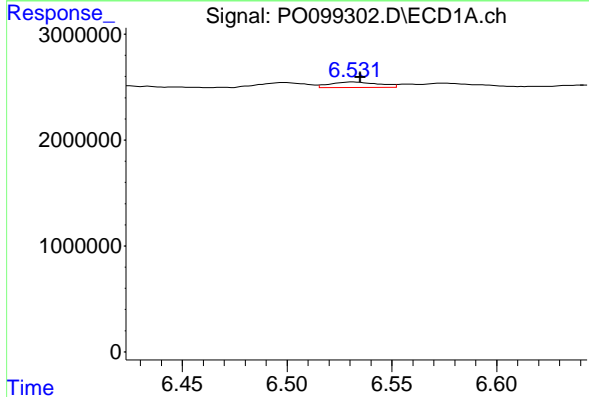
R.T.: 6.150 min  
 Delta R.T.: 0.020 min  
 Response: 31652  
 Conc: 0.56 ng/ml

Instrument :  
 ECD\_O  
 ClientSampleId :



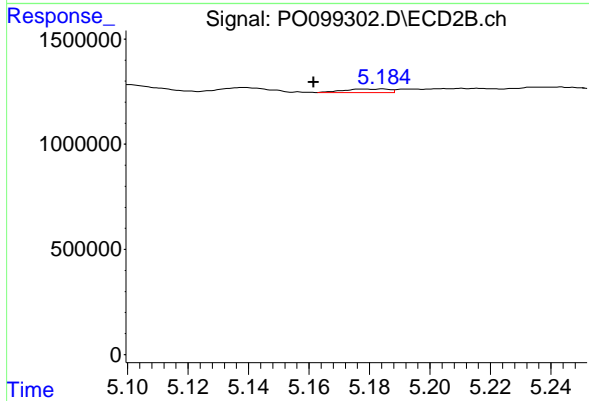
#23 AR-1248-3

R.T.: 4.988 min  
 Delta R.T.: -0.002 min  
 Response: 152681  
 Conc: 7.32 ng/ml



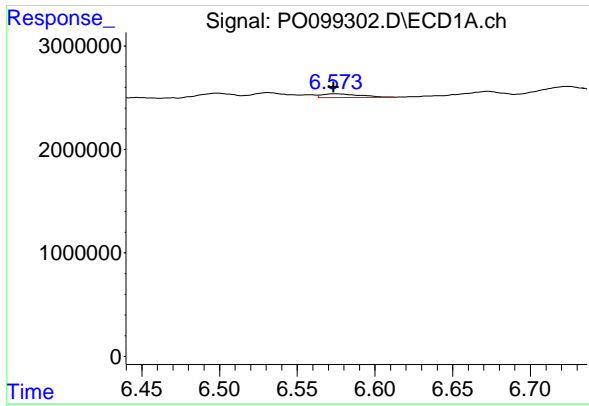
#24 AR-1248-4

R.T.: 6.532 min  
 Delta R.T.: -0.003 min  
 Response: 844493  
 Conc: 15.49 ng/ml



#24 AR-1248-4

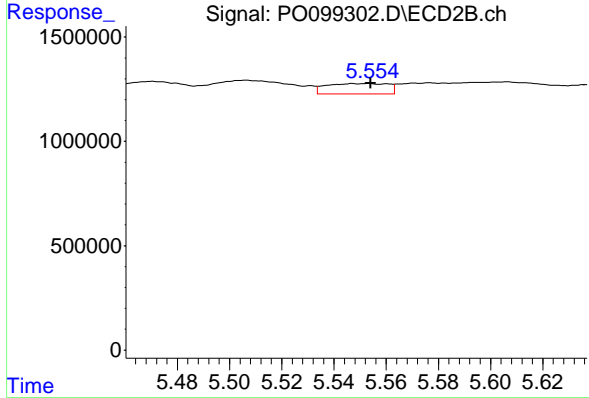
R.T.: 5.184 min  
 Delta R.T.: 0.023 min  
 Response: 179435  
 Conc: 7.30 ng/ml



#25 AR-1248-5

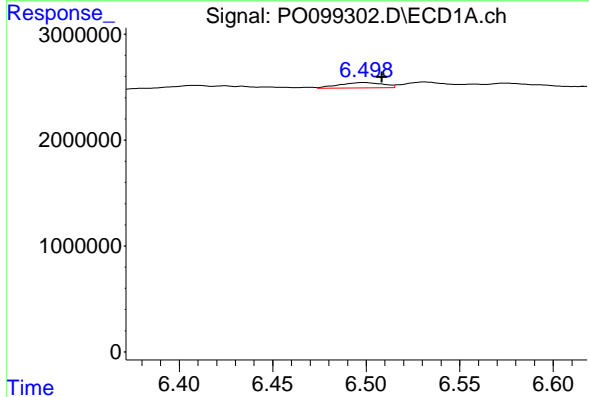
R.T.: 6.574 min  
 Delta R.T.: 0.000 min  
 Response: 601628  
 Conc: 10.59 ng/ml

Instrument :  
 ECD\_O  
 ClientSampleId :



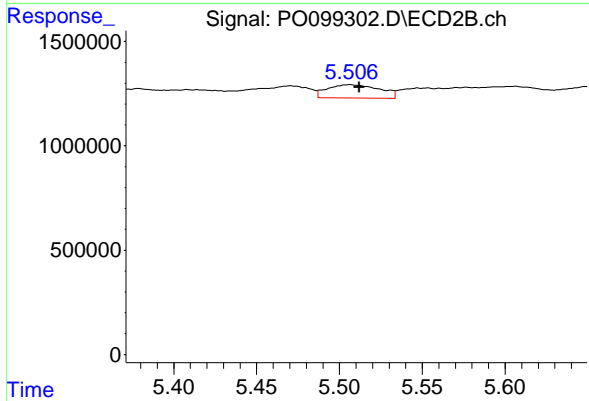
#25 AR-1248-5

R.T.: 5.553 min  
 Delta R.T.: -0.001 min  
 Response: 816961  
 Conc: 37.62 ng/ml



#26 AR-1254-1

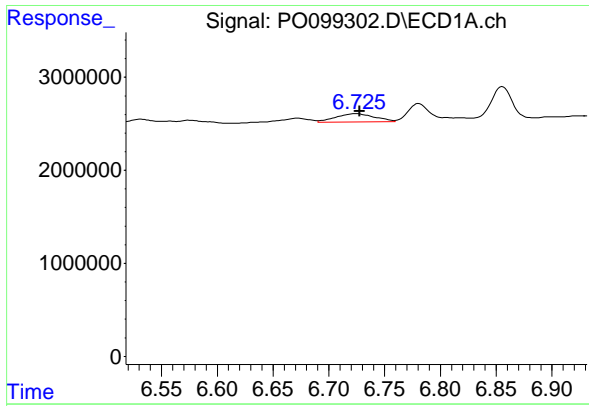
R.T.: 6.499 min  
 Delta R.T.: -0.009 min  
 Response: 814417  
 Conc: 12.37 ng/ml



#26 AR-1254-1

R.T.: 5.506 min  
 Delta R.T.: -0.006 min  
 Response: 1393852  
 Conc: 39.34 ng/ml

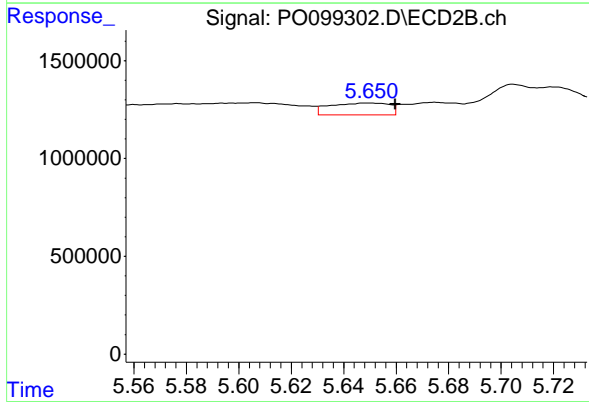




#27 AR-1254-2

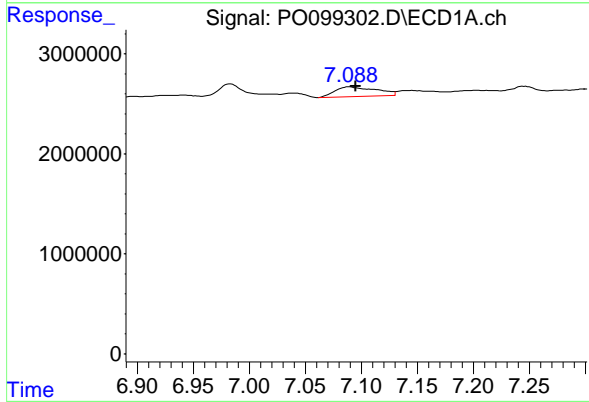
R.T.: 6.725 min  
 Delta R.T.: -0.003 min  
 Response: 2162491  
 Conc: 22.46 ng/ml

Instrument :  
 ECD\_O  
 ClientSampleId :



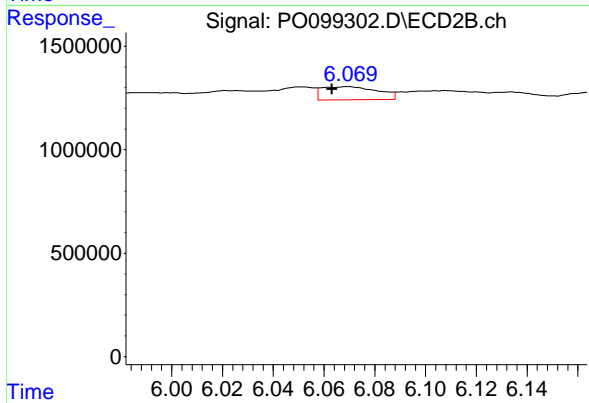
#27 AR-1254-2

R.T.: 5.649 min  
 Delta R.T.: -0.011 min  
 Response: 959673  
 Conc: 30.00 ng/ml



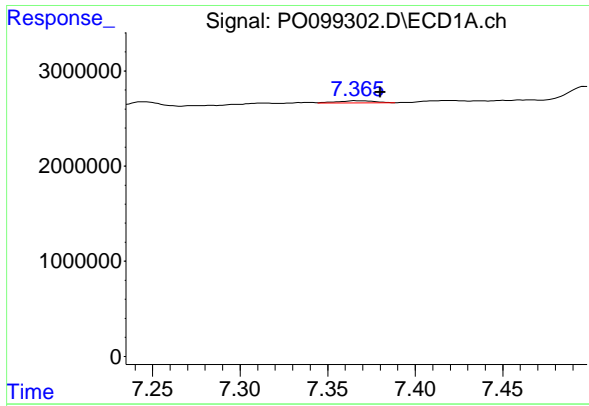
#28 AR-1254-3

R.T.: 7.089 min  
 Delta R.T.: -0.006 min  
 Response: 2457630  
 Conc: 27.50 ng/ml



#28 AR-1254-3

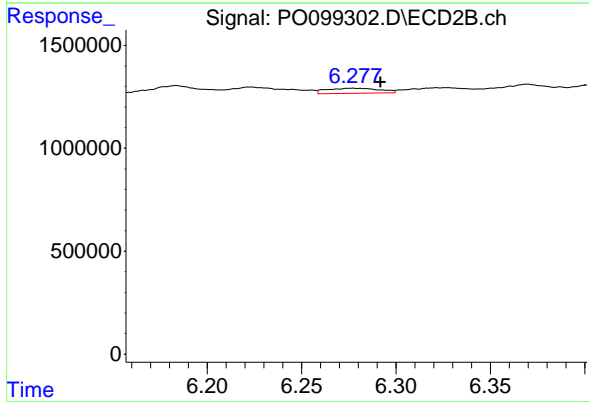
R.T.: 6.069 min  
 Delta R.T.: 0.006 min  
 Response: 967671  
 Conc: 19.79 ng/ml



#29 AR-1254-4

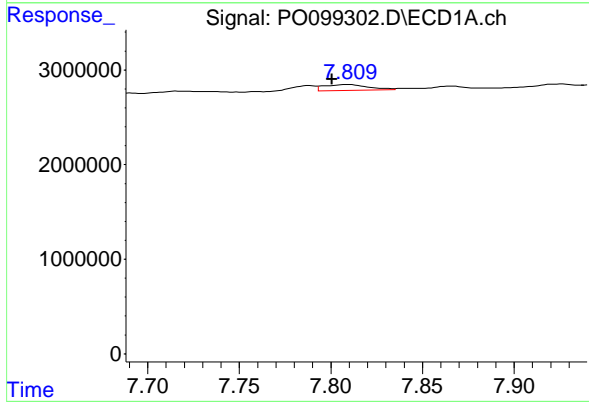
R.T.: 7.367 min  
 Delta R.T.: -0.014 min  
 Response: 318534  
 Conc: 5.81 ng/ml

Instrument :  
 ECD\_O  
 ClientSampleId :



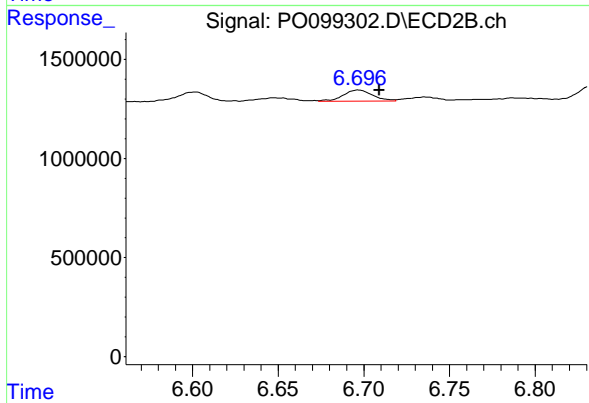
#29 AR-1254-4

R.T.: 6.277 min  
 Delta R.T.: -0.014 min  
 Response: 484418  
 Conc: 18.48 ng/ml



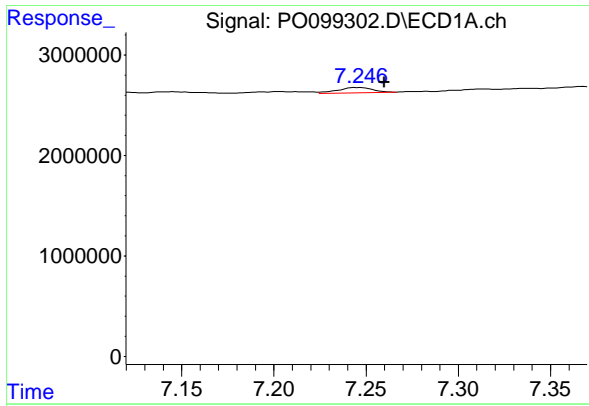
#30 AR-1254-5

R.T.: 7.809 min  
 Delta R.T.: 0.009 min  
 Response: 1036998  
 Conc: 15.40 ng/ml



#30 AR-1254-5

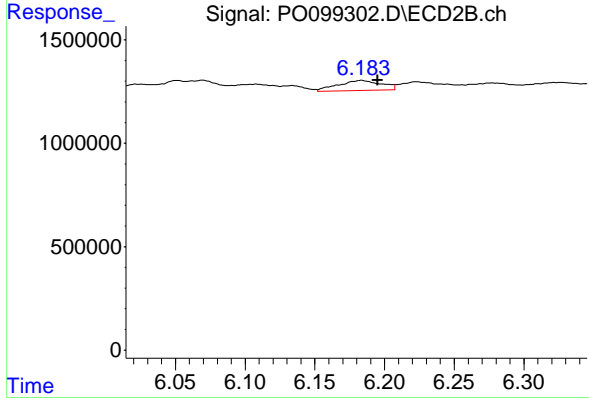
R.T.: 6.697 min  
 Delta R.T.: -0.012 min  
 Response: 688088  
 Conc: 16.32 ng/ml



#31 AR-1260-1

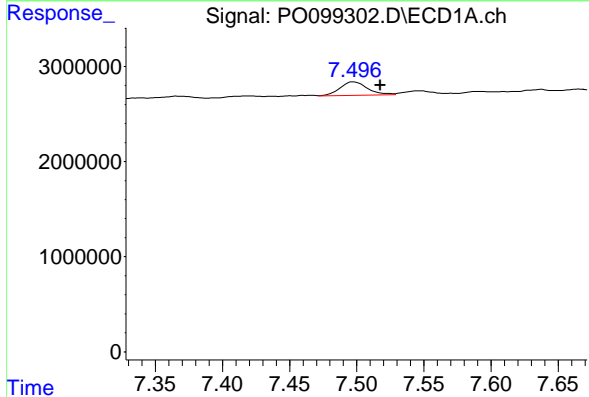
R.T.: 7.245 min  
 Delta R.T.: -0.015 min  
 Response: 716748  
 Conc: 10.00 ng/ml

Instrument :  
 ECD\_O  
 ClientSampleId :



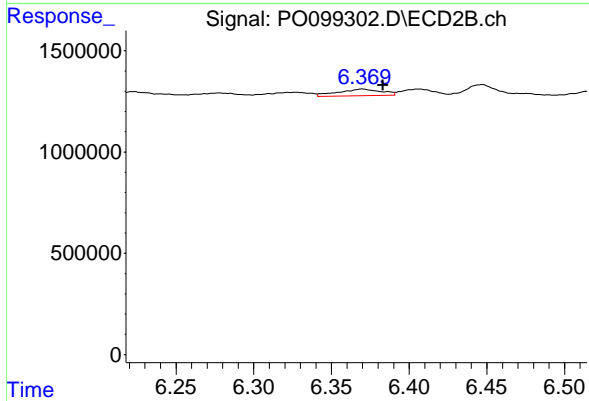
#31 AR-1260-1

R.T.: 6.183 min  
 Delta R.T.: -0.012 min  
 Response: 1059612  
 Conc: 30.04 ng/ml



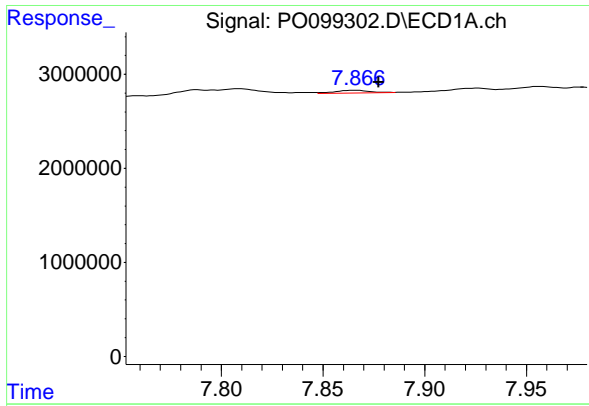
#32 AR-1260-2

R.T.: 7.497 min  
 Delta R.T.: -0.020 min  
 Response: 2059787  
 Conc: 26.11 ng/ml



#32 AR-1260-2

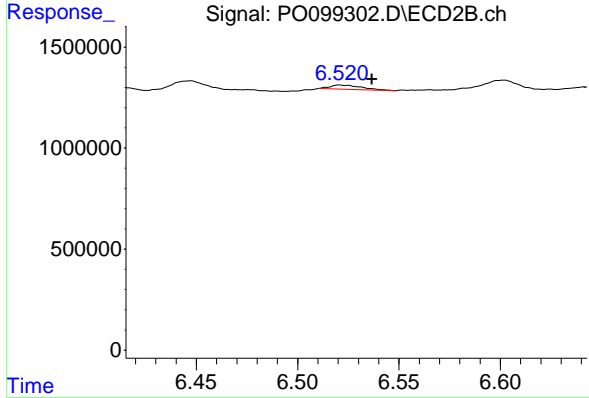
R.T.: 6.370 min  
 Delta R.T.: -0.013 min  
 Response: 632424  
 Conc: 15.78 ng/ml



#33 AR-1260-3

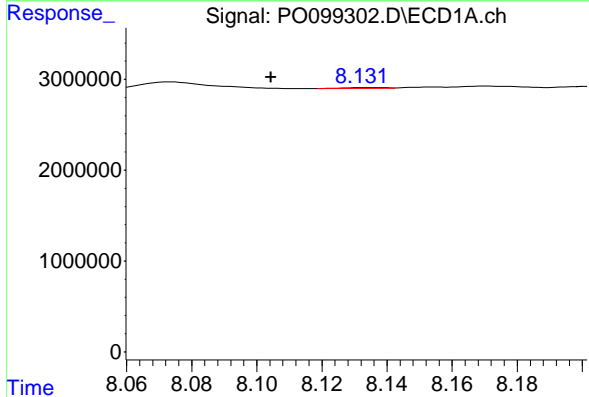
R.T.: 7.866 min  
 Delta R.T.: -0.011 min  
 Response: 330019  
 Conc: 6.04 ng/ml

Instrument :  
 ECD\_O  
 ClientSampleId :



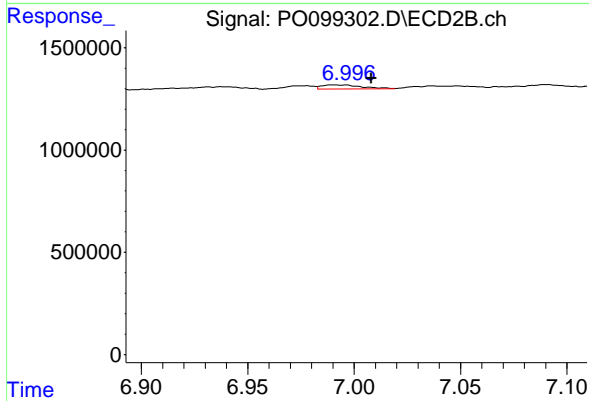
#33 AR-1260-3

R.T.: 6.521 min  
 Delta R.T.: -0.016 min  
 Response: 224715  
 Conc: 5.94 ng/ml



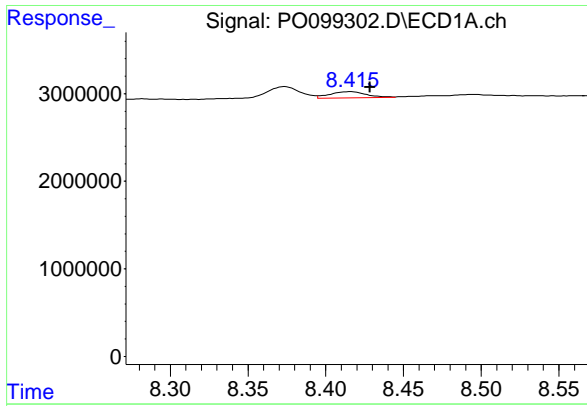
#34 AR-1260-4

R.T.: 8.132 min  
 Delta R.T.: 0.028 min  
 Response: 89474  
 Conc: 1.43 ng/ml



#34 AR-1260-4

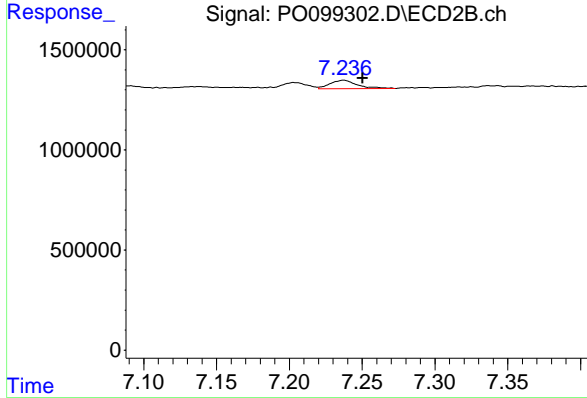
R.T.: 6.991 min  
 Delta R.T.: -0.017 min  
 Response: 261968  
 Conc: 9.07 ng/ml



#35 AR-1260-5

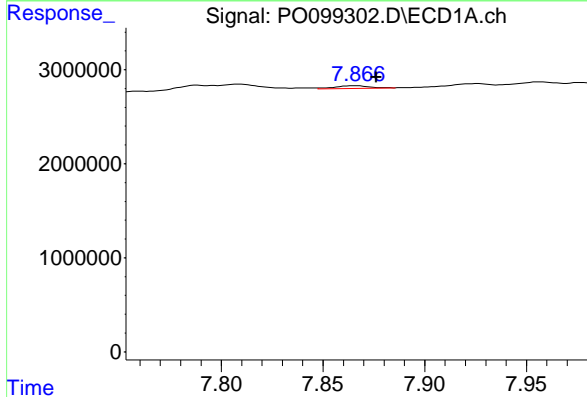
R.T.: 8.416 min  
 Delta R.T.: -0.012 min  
 Response: 1136796  
 Conc: 10.62 ng/ml

Instrument :  
 ECD\_O  
 ClientSampleId :



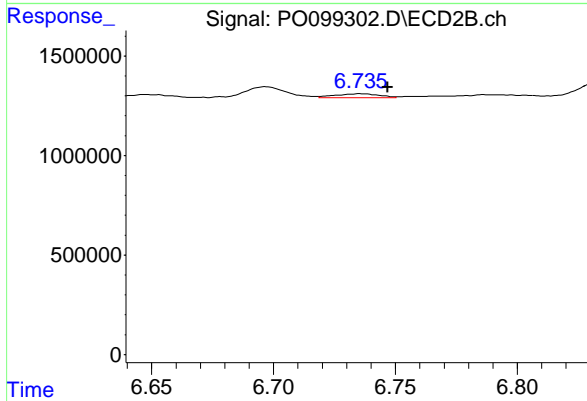
#35 AR-1260-5

R.T.: 7.237 min  
 Delta R.T.: -0.013 min  
 Response: 551405  
 Conc: 9.16 ng/ml



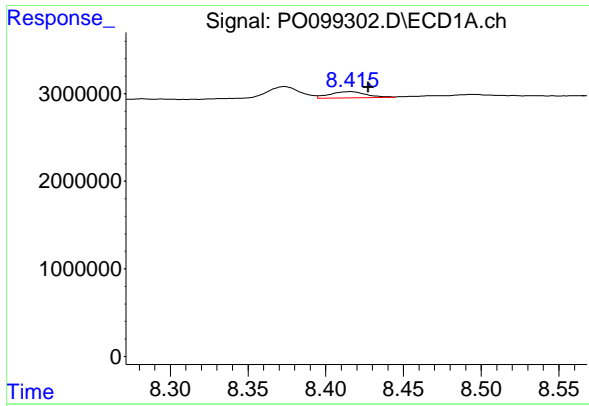
#36 AR-1262-1

R.T.: 7.866 min  
 Delta R.T.: -0.010 min  
 Response: 330019  
 Conc: 3.65 ng/ml



#36 AR-1262-1

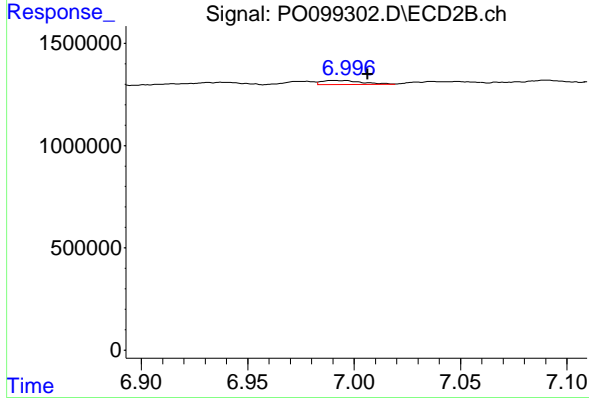
R.T.: 6.736 min  
 Delta R.T.: -0.011 min  
 Response: 248046  
 Conc: 5.29 ng/ml



#37 AR-1262-2

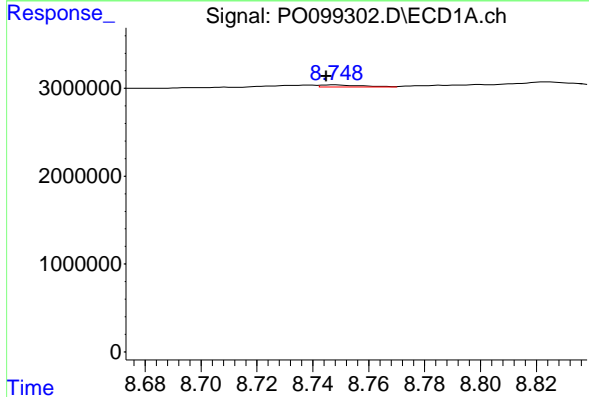
R.T.: 8.416 min  
 Delta R.T.: -0.011 min  
 Response: 1136796  
 Conc: 8.53 ng/ml

Instrument :  
 ECD\_O  
 ClientSampleId :



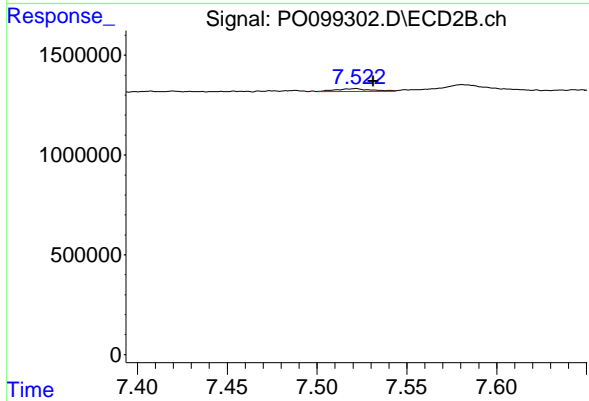
#37 AR-1262-2

R.T.: 6.991 min  
 Delta R.T.: -0.016 min  
 Response: 261968  
 Conc: 6.31 ng/ml



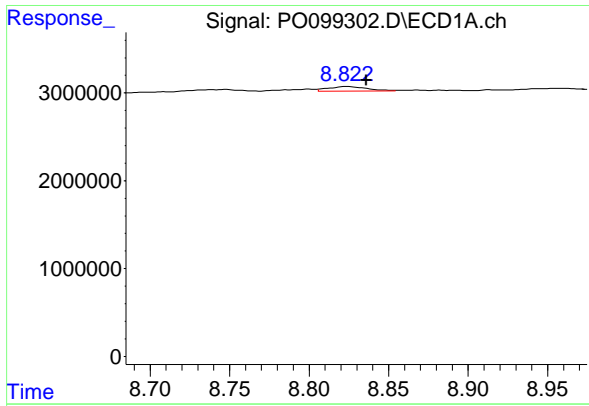
#38 AR-1262-3

R.T.: 8.748 min  
 Delta R.T.: 0.003 min  
 Response: 261906  
 Conc: 2.66 ng/ml



#38 AR-1262-3

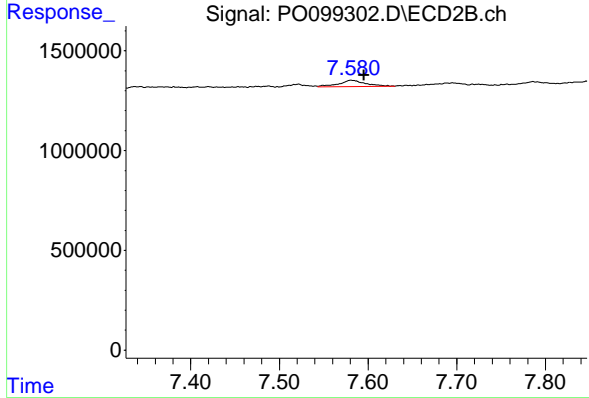
R.T.: 7.521 min  
 Delta R.T.: -0.010 min  
 Response: 189469  
 Conc: 5.93 ng/ml



#39 AR-1262-4

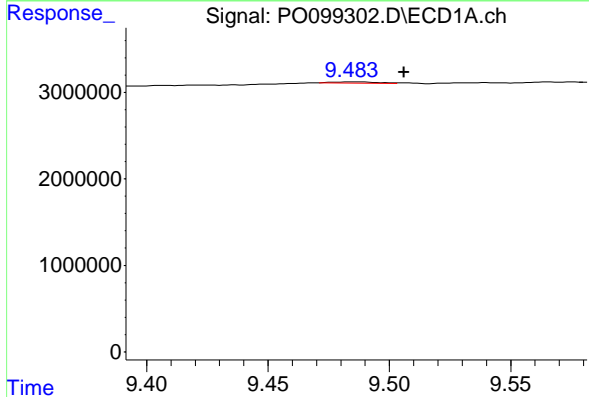
R.T.: 8.823 min  
 Delta R.T.: -0.013 min  
 Response: 904594  
 Conc: 11.29 ng/ml

Instrument :  
 ECD\_O  
 ClientSampleId :



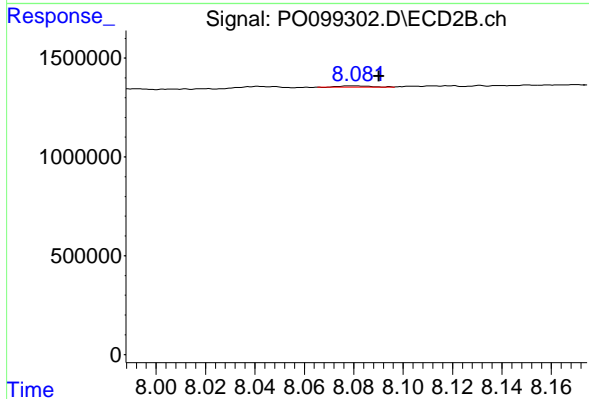
#39 AR-1262-4

R.T.: 7.581 min  
 Delta R.T.: -0.014 min  
 Response: 639246  
 Conc: 11.63 ng/ml



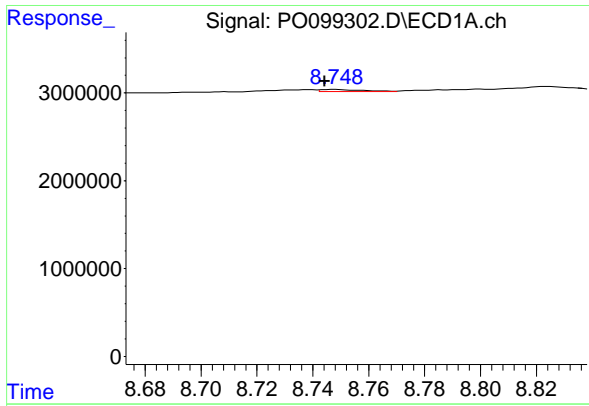
#40 AR-1262-5

R.T.: 9.485 min  
 Delta R.T.: -0.021 min  
 Response: 190273  
 Conc: 4.33 ng/ml



#40 AR-1262-5

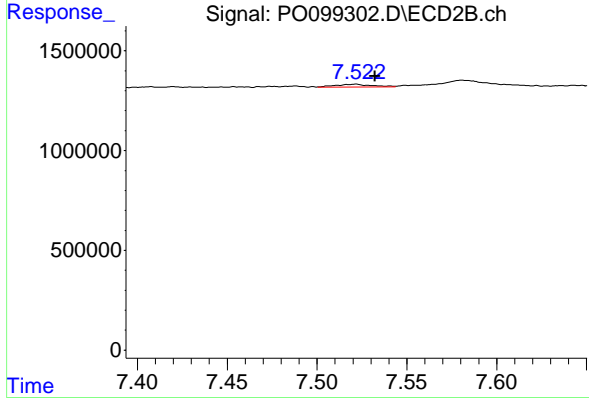
R.T.: 8.080 min  
 Delta R.T.: -0.011 min  
 Response: 50023  
 Conc: 1.99 ng/ml



#41 AR-1268-1

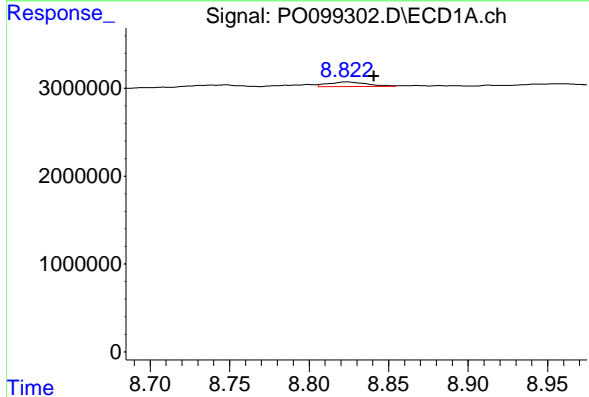
R.T.: 8.748 min  
 Delta R.T.: 0.004 min  
 Response: 261906  
 Conc: 1.52 ng/ml

Instrument :  
 ECD\_O  
 ClientSampleId :



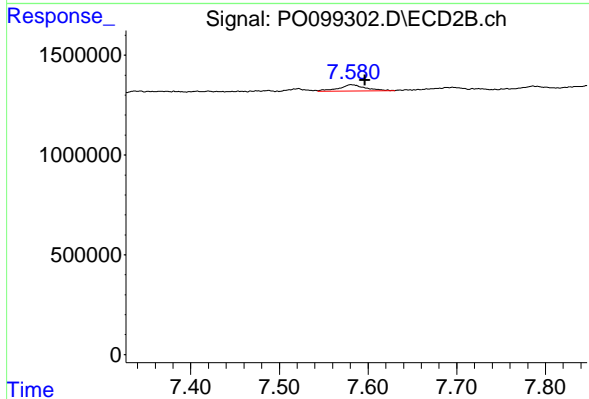
#41 AR-1268-1

R.T.: 7.521 min  
 Delta R.T.: -0.011 min  
 Response: 189469  
 Conc: 2.12 ng/ml



#42 AR-1268-2

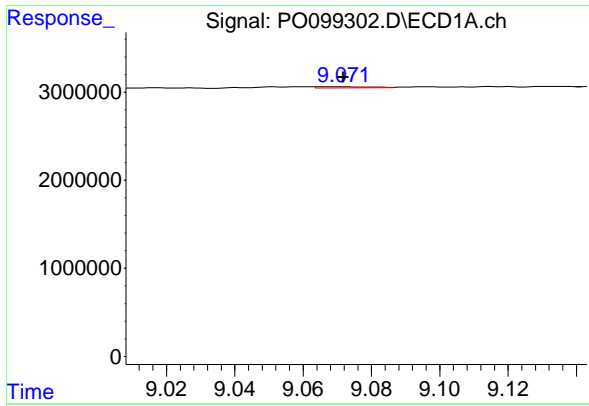
R.T.: 8.823 min  
 Delta R.T.: -0.017 min  
 Response: 904594  
 Conc: 5.77 ng/ml



#42 AR-1268-2

R.T.: 7.581 min  
 Delta R.T.: -0.015 min  
 Response: 639246  
 Conc: 8.10 ng/ml

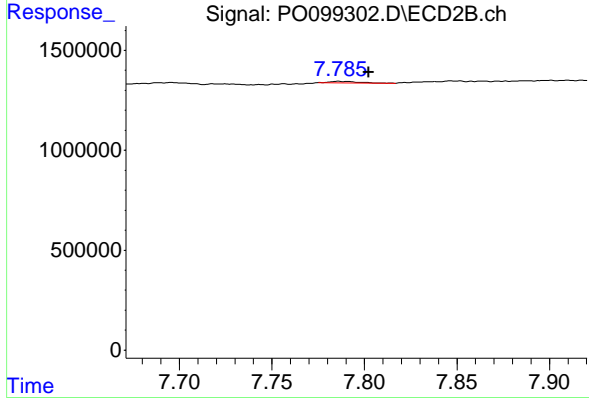




#43 AR-1268-3

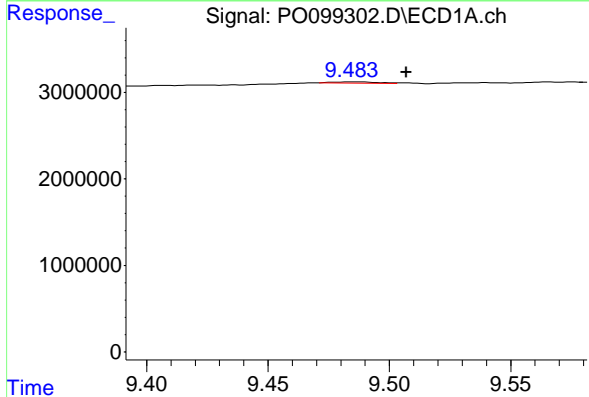
R.T.: 9.071 min  
 Delta R.T.: -0.001 min  
 Response: 129870  
 Conc: 0.93 ng/ml

Instrument :  
 ECD\_O  
 ClientSampleId :



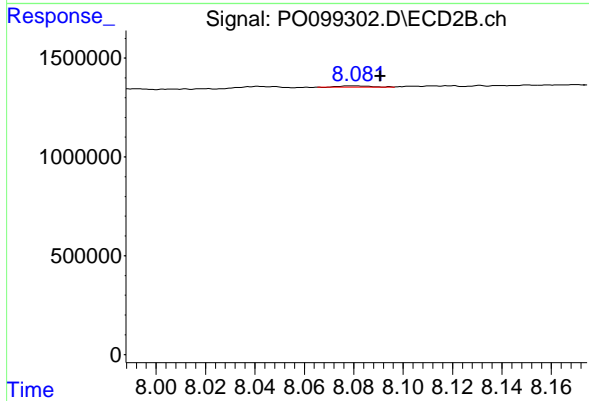
#43 AR-1268-3

R.T.: 7.786 min  
 Delta R.T.: -0.016 min  
 Response: 73296  
 Conc: 1.04 ng/ml



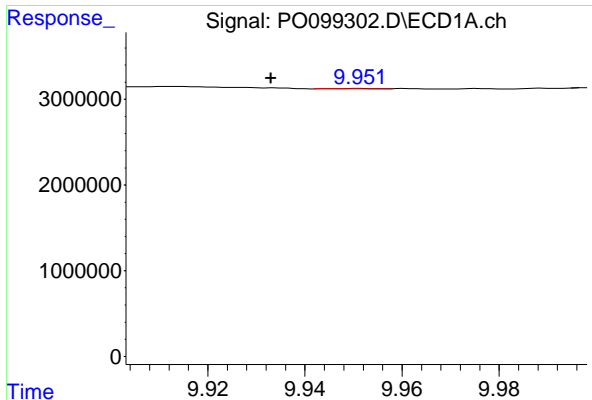
#44 AR-1268-4

R.T.: 9.485 min  
 Delta R.T.: -0.022 min  
 Response: 190273  
 Conc: 3.79 ng/ml



#44 AR-1268-4

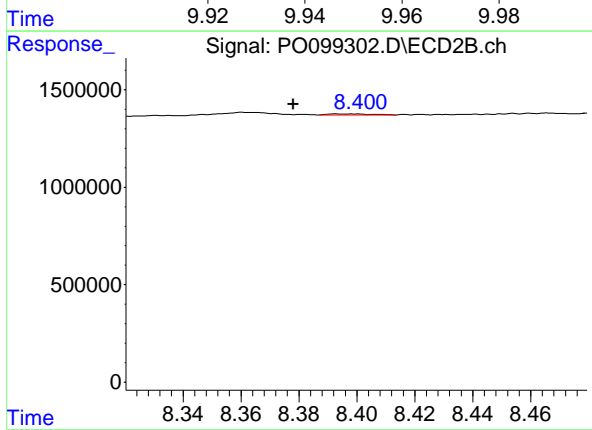
R.T.: 8.080 min  
 Delta R.T.: -0.011 min  
 Response: 50023  
 Conc: 1.82 ng/ml



#45 AR-1268-5

R.T.: 9.951 min  
Delta R.T.: 0.018 min  
Response: 23783  
Conc: 0.06 ng/ml

Instrument :  
ECD\_O  
ClientSampleId :



#45 AR-1268-5

R.T.: 8.393 min  
Delta R.T.: 0.015 min  
Response: 56556  
Conc: 0.30 ng/ml