

Data Path : Z:\pestpcbsrv\HPCHEM1\ECD_0\Data\PO110223\
 Data File : PO099282.D
 Signal(s) : Signal #1: ECD1A.ch Signal #2: ECD2B.ch
 Acq On : 02 Nov 2023 10:42
 Operator : YP/AJ
 Sample : AR1248CCC500
 Misc :
 ALS Vial : 5 Sample Multiplier: 1

Instrument :
 ECD_0
ClientSampleId :
 AR1248CCC500

Manual Integrations
APPROVED
 Reviewed By :Yogesh Patel

Integration File signal 1: autoint1.e
 Integration File signal 2: autoint2.e
 Quant Time: Nov 02 23:14:26 2023
 Quant Method : Z:\pestpcbsrv\HPCHEM1\ECD_0\methods\PO102523.M
 Quant Title : GC EXTRACTABLES
 QLast Update : Wed Oct 25 06:04:36 2023
 Response via : Initial Calibration
 Integrator: ChemStation

11/06/2023
 Supervised By :Ankita Jodhani

Volume Inj. : 2 µl
 Signal #1 Phase : ZB-MR1 Signal #2 Phase: ZB-MR2
 Signal #1 Info : 30Mx0.32mmx 0.50µ Signal #2 Info : 30M x 0.32mm x 0.25µm

Compound	RT#1	RT#2	Resp#1	Resp#2	ng/ml	ng/ml	11/06/2023
System Monitoring Compounds							
1) SA Tetrachlo...	4.470	3.622	92785142	36202525	46.957	50.304m	
2) SA Decachlor...	10.265	8.616	67909494	28998028	59.945m	54.047m	
Target Compounds							
21) L5 AR-1248-1	5.643	4.701	17555929	7941118	516.766	572.953m	
22) L5 AR-1248-2	5.917	4.938	24948796	10486766	476.729m	527.939	
23) L5 AR-1248-3	6.122	4.980	26320173	11110261	461.938	532.775	
24) L5 AR-1248-4	6.528	5.151	28297121	12731400	518.912	517.884	
25) L5 AR-1248-5	6.567	5.543	28889101	12236369	508.556	563.410	

(f)=RT Delta > 1/2 Window (#)=Amounts differ by > 25% (m)=manual int.

Data Path : Z:\pestpcbsrv\HPCHEM1\ECD_O\Data\PO110223\
Data File : PO099282.D
Signal(s) : Signal #1: ECD1A.ch Signal #2: ECD2B.ch
Acq On : 02 Nov 2023 10:42
Operator : YP/AJ
Sample : AR1248CCC500
Misc :
ALS Vial : 5 Sample Multiplier: 1

Instrument :
ECD_O
ClientSampleId :
AR1248CCC500

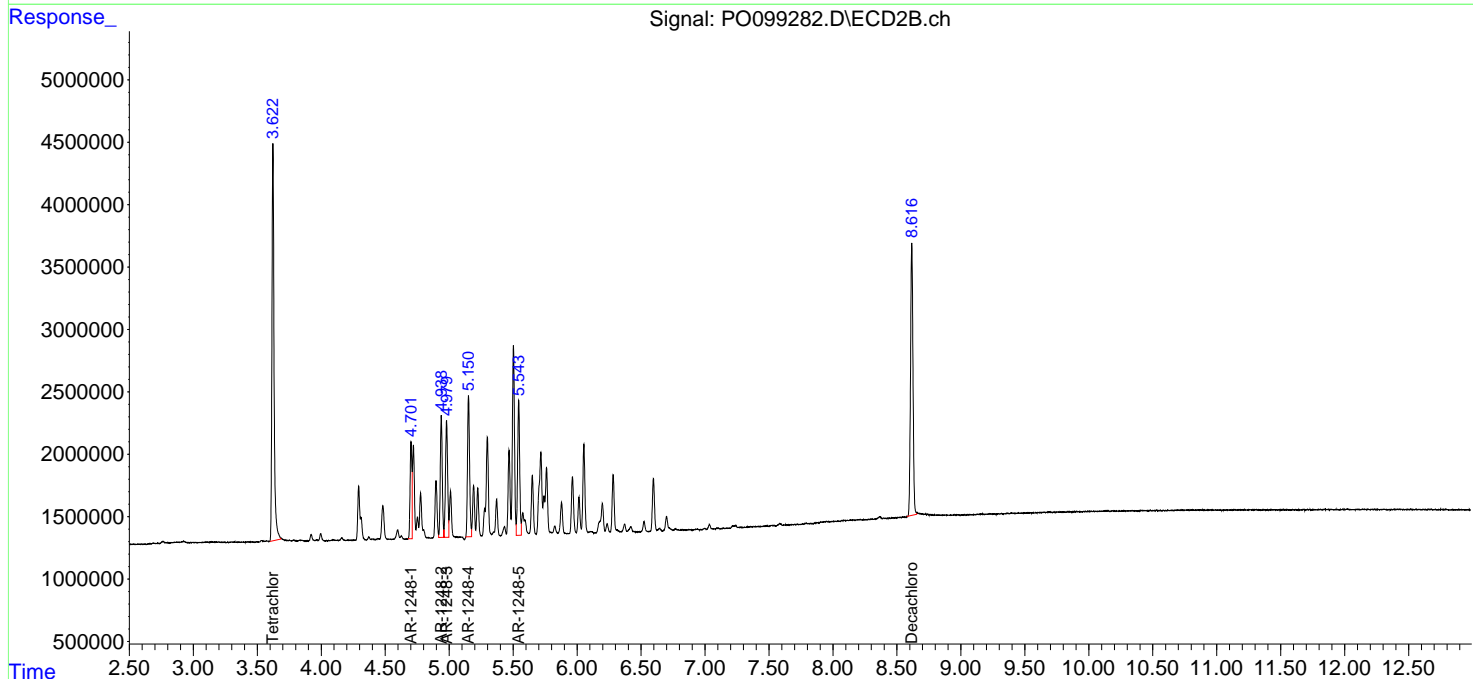
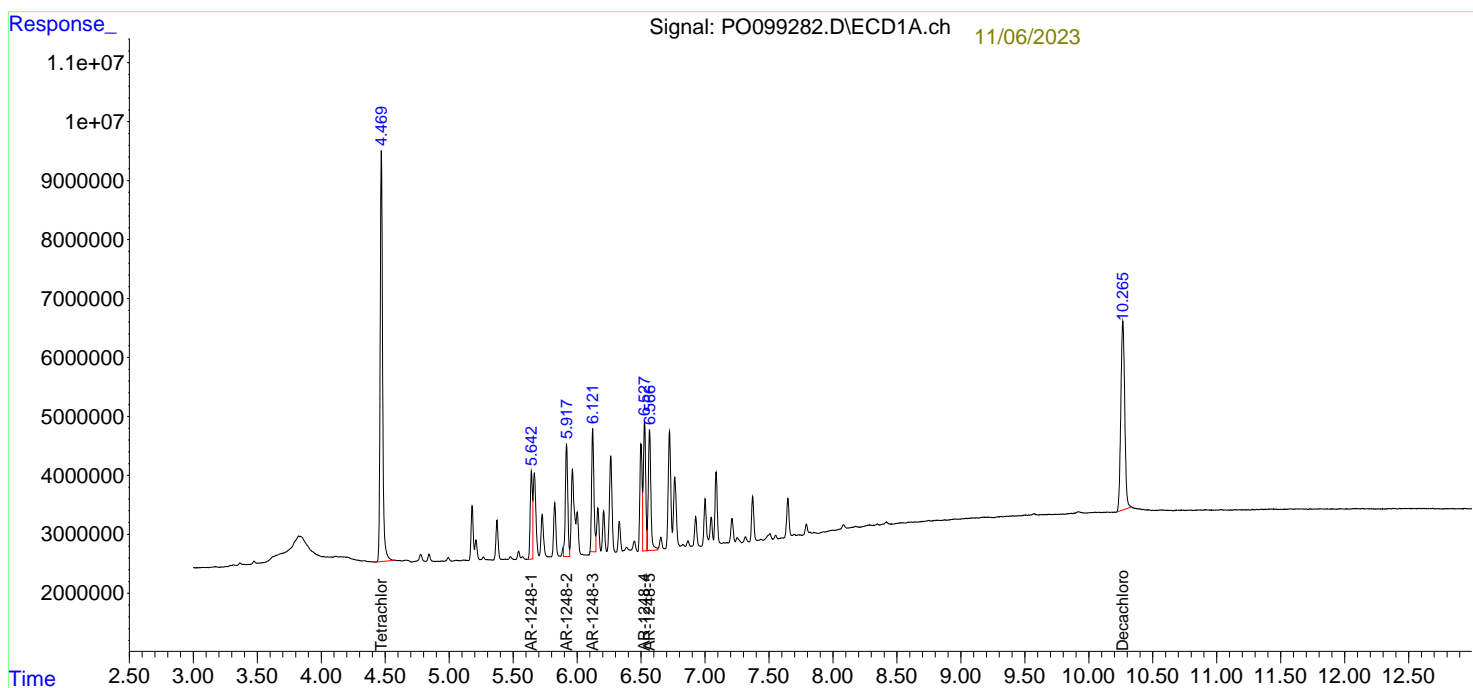
Manual Integrations
APPROVED

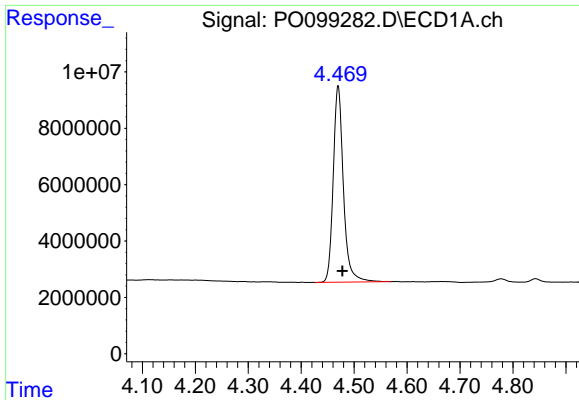
Reviewed By :Yogesh
Patel

Integration File signal 1: autoint1.e
Integration File signal 2: autoint2.e
Quant Time: Nov 02 23:14:26 2023
Quant Method : Z:\pestpcbsrv\HPCHEM1\ECD_O\methods\PO102523.M
Quant Title : GC EXTRACTABLES
QLast Update : Wed Oct 25 06:04:36 2023
Response via : Initial Calibration
Integrator: ChemStation

11/06/2023
Supervised By :Ankita
Jodhani

Volume Inj. : 2 µl
Signal #1 Phase : ZB-MR1 Signal #2 Phase: ZB-MR2
Signal #1 Info : 30Mx0.32mmx 0.50µ Signal #2 Info : 30M x 0.32mm x 0.25µm

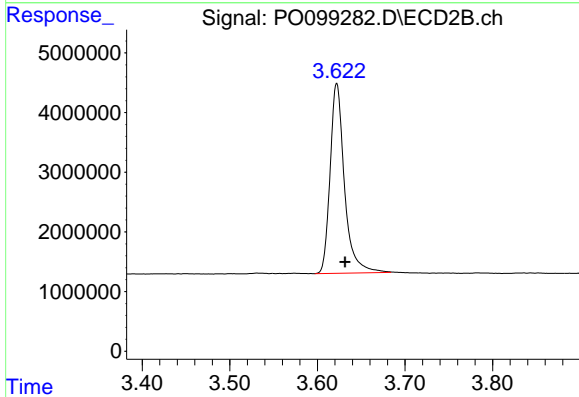




#1 Tetrachloro-m-xylene
 R.T.: 4.470 min
 Delta R.T.: -0.008 min
 Response: 92785142
 Conc: 46.96 ng/ml

Instrument :
 ECD_O
 ClientSampleId :
 AR1248CCC500

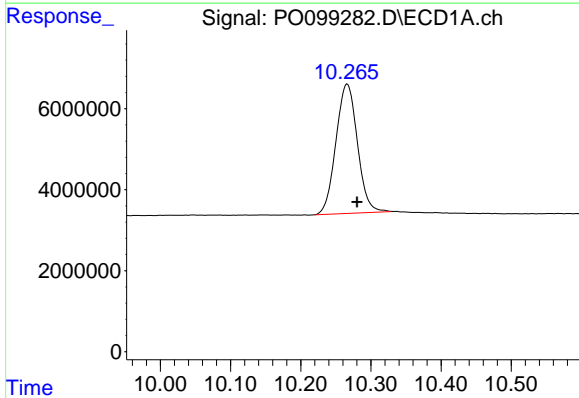
Manual Integrations
APPROVED
 Reviewed By :Yogesh
 Patel



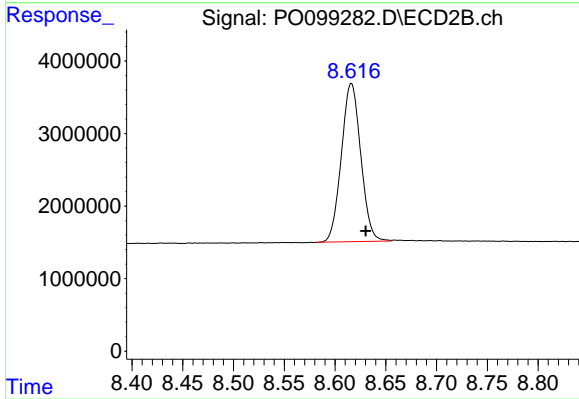
#1 Tetrachloro-m-xylene
 R.T.: 3.622 min
 Delta R.T.: -0.010 min
 Response: 36202525
 Conc: 50.30 ng/ml m

11/06/2023
 Supervised By :Ankita
 Jodhani

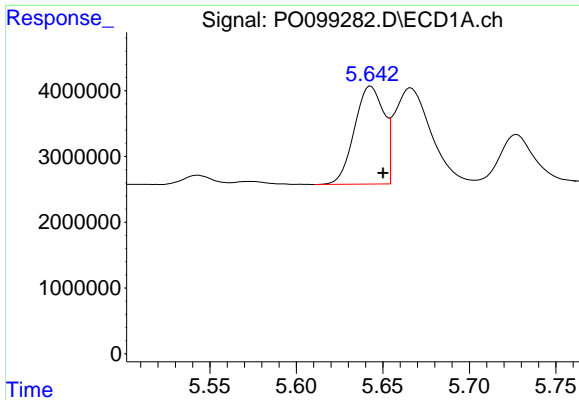
11/06/2023



#2 Decachlorobiphenyl
 R.T.: 10.265 min
 Delta R.T.: -0.015 min
 Response: 67909494
 Conc: 59.94 ng/ml m



#2 Decachlorobiphenyl
 R.T.: 8.616 min
 Delta R.T.: -0.014 min
 Response: 28998028
 Conc: 54.05 ng/ml m



#21 AR-1248-1

R.T.: 5.643 min
 Delta R.T.: -0.007 min
 Response: 17555929
 Conc: 516.77 ng/ml

Instrument :

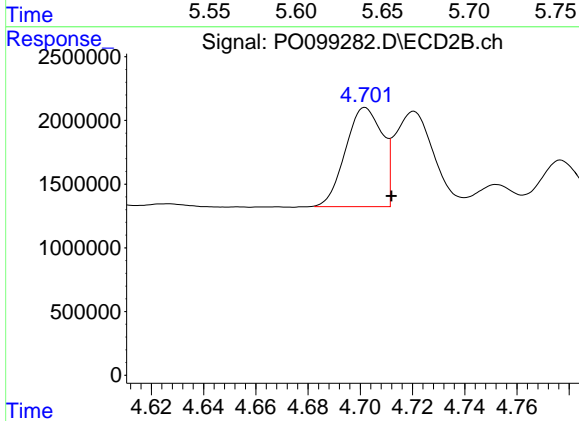
ECD_O

ClientSampleId :

AR1248CCC500

Manual Integrations
 APPROVED

Reviewed By :Yogesh
 Patel

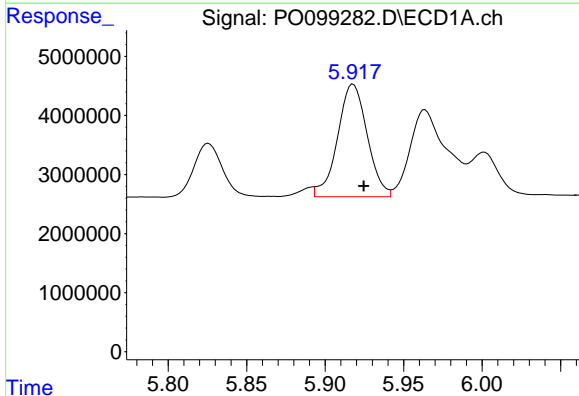


#21 AR-1248-1

R.T.: 4.701 min
 Delta R.T.: -0.010 min
 Response: 7941118
 Conc: 572.95 ng/ml m

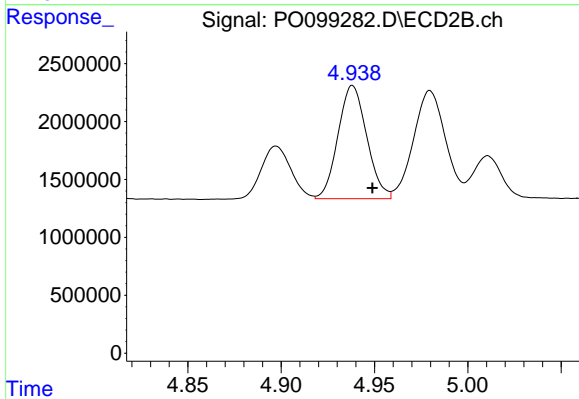
11/06/2023
 Supervised By :Ankita
 Jodhani

11/06/2023



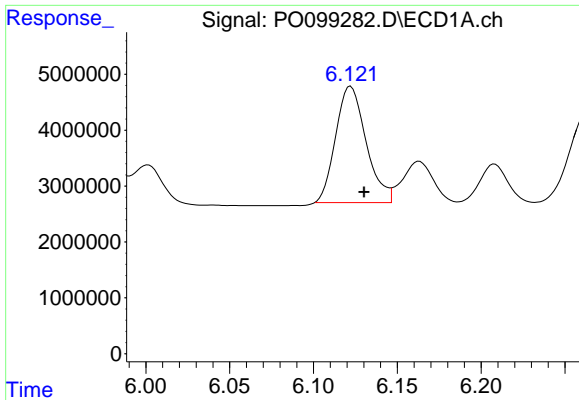
#22 AR-1248-2

R.T.: 5.917 min
 Delta R.T.: -0.008 min
 Response: 24948796
 Conc: 476.73 ng/ml m



#22 AR-1248-2

R.T.: 4.938 min
 Delta R.T.: -0.011 min
 Response: 10486766
 Conc: 527.94 ng/ml



#23 AR-1248-3

R.T.: 6.122 min
 Delta R.T.: -0.008 min
 Response: 26320173
 Conc: 461.94 ng/ml

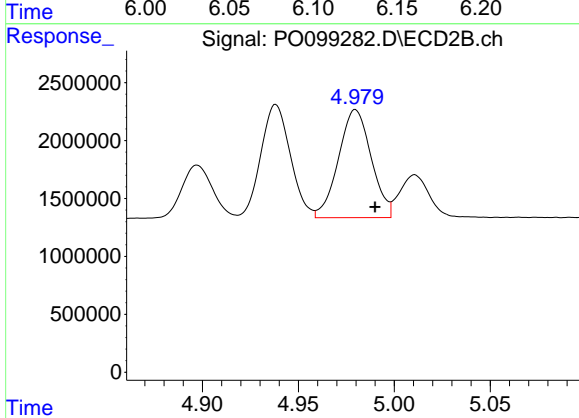
Instrument :

ECD_O

ClientSampleId :
 AR1248CCC500

Manual Integrations
 APPROVED

Reviewed By :Yogesh
 Patel

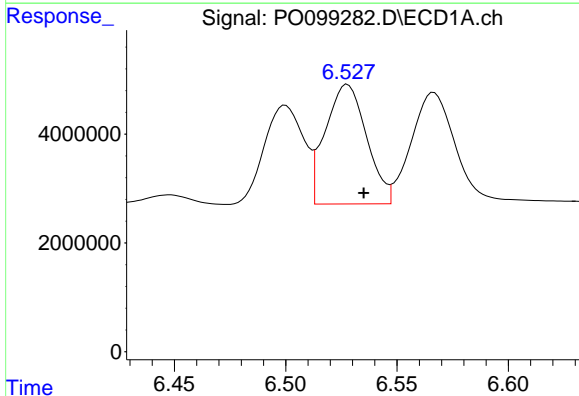


#23 AR-1248-3

R.T.: 4.980 min
 Delta R.T.: -0.010 min
 Response: 11110261
 Conc: 532.78 ng/ml

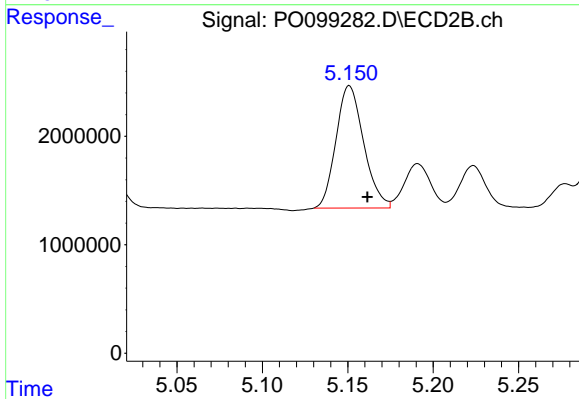
11/06/2023
 Supervised By :Ankita
 Jodhani

11/06/2023



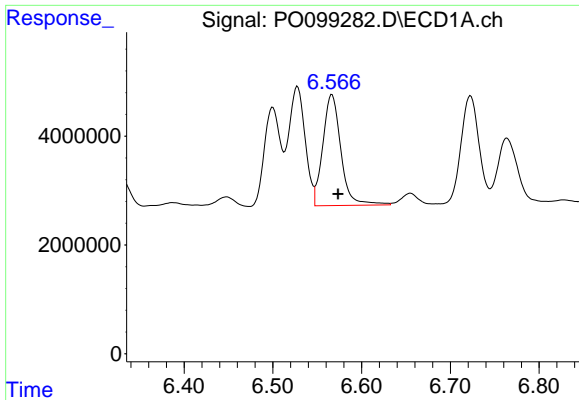
#24 AR-1248-4

R.T.: 6.528 min
 Delta R.T.: -0.007 min
 Response: 28297121
 Conc: 518.91 ng/ml



#24 AR-1248-4

R.T.: 5.151 min
 Delta R.T.: -0.011 min
 Response: 12731400
 Conc: 517.88 ng/ml



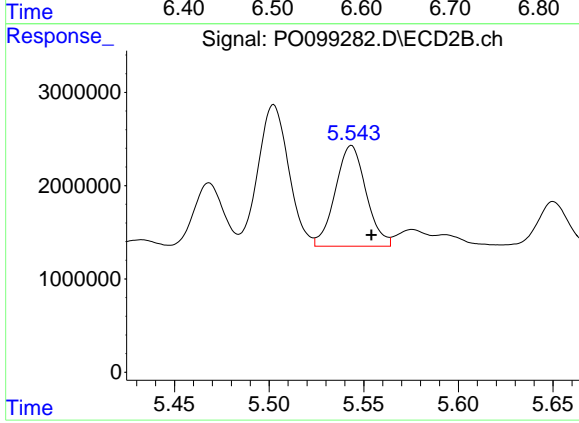
#25 AR-1248-5

R.T.: 6.567 min
 Delta R.T.: -0.007 min
 Response: 28889101
 Conc: 508.56 ng/ml

Instrument :
 ECD_O
 ClientSampleId :
 AR1248CCC500

Manual Integrations
 APPROVED

Reviewed By :Yogesh
 Patel



#25 AR-1248-5

R.T.: 5.543 min
 Delta R.T.: -0.010 min
 Response: 12236369
 Conc: 563.41 ng/ml

11/06/2023
 Supervised By :Ankita
 Jodhani

11/06/2023