

Data Path : Z:\pestpcbsrv\HPCHEM1\ECD_0\Data\PO110223\
 Data File : PO099283.D
 Signal(s) : Signal #1: ECD1A.ch Signal #2: ECD2B.ch
 Acq On : 02 Nov 2023 10:59
 Operator : YP/AJ
 Sample : AR1254CCC500
 Misc :
 ALS Vial : 6 Sample Multiplier: 1

Instrument :
 ECD_0
ClientSampleId :
 AR1254CCC500

Manual Integrations
APPROVED

Reviewed By :Yogesh Patel 11/06/2023
 Supervised By :Ankita Jodhani 11/06/2023

Integration File signal 1: autoint1.e
 Integration File signal 2: autoint2.e
 Quant Time: Nov 02 23:14:44 2023
 Quant Method : Z:\pestpcbsrv\HPCHEM1\ECD_0\methods\PO102523.M
 Quant Title : GC EXTRACTABLES
 QLast Update : Wed Oct 25 06:04:36 2023
 Response via : Initial Calibration
 Integrator: ChemStation

Volume Inj. : 2 µl
 Signal #1 Phase : ZB-MR1 Signal #2 Phase: ZB-MR2
 Signal #1 Info : 30Mx0.32mmx 0.50µ Signal #2 Info : 30M x 0.32mm x 0.25µm

Compound	RT#1	RT#2	Resp#1	Resp#2	ng/ml	ng/ml

System Monitoring Compounds						
1) SA Tetrachlo...	4.467	3.623	97319444	37768781	49.252	52.480m
2) SA Decachlor...	10.259	8.613	71364528	29802697	62.994m	55.547m
Target Compounds						
26) L6 AR-1254-1	6.498	5.503	31744117	18808636	482.236	530.817
27) L6 AR-1254-2	6.717	5.650	47026075	16859563	488.488	527.118
28) L6 AR-1254-3	7.084	6.053	45457652	25751448	508.571	526.749
29) L6 AR-1254-4	7.369	6.282	30979327	15424060	565.486m	588.551
30) L6 AR-1254-5	7.790	6.699	36375427	23300112	540.217	552.728

(f)=RT Delta > 1/2 Window (#)=Amounts differ by > 25% (m)=manual int.

Data Path : Z:\pestpcbsrv\HPCHEM1\ECD_0\Data\PO110223\
 Data File : PO099283.D
 Signal(s) : Signal #1: ECD1A.ch Signal #2: ECD2B.ch
 Acq On : 02 Nov 2023 10:59
 Operator : YP/AJ
 Sample : AR1254CCC500
 Misc :
 ALS Vial : 6 Sample Multiplier: 1

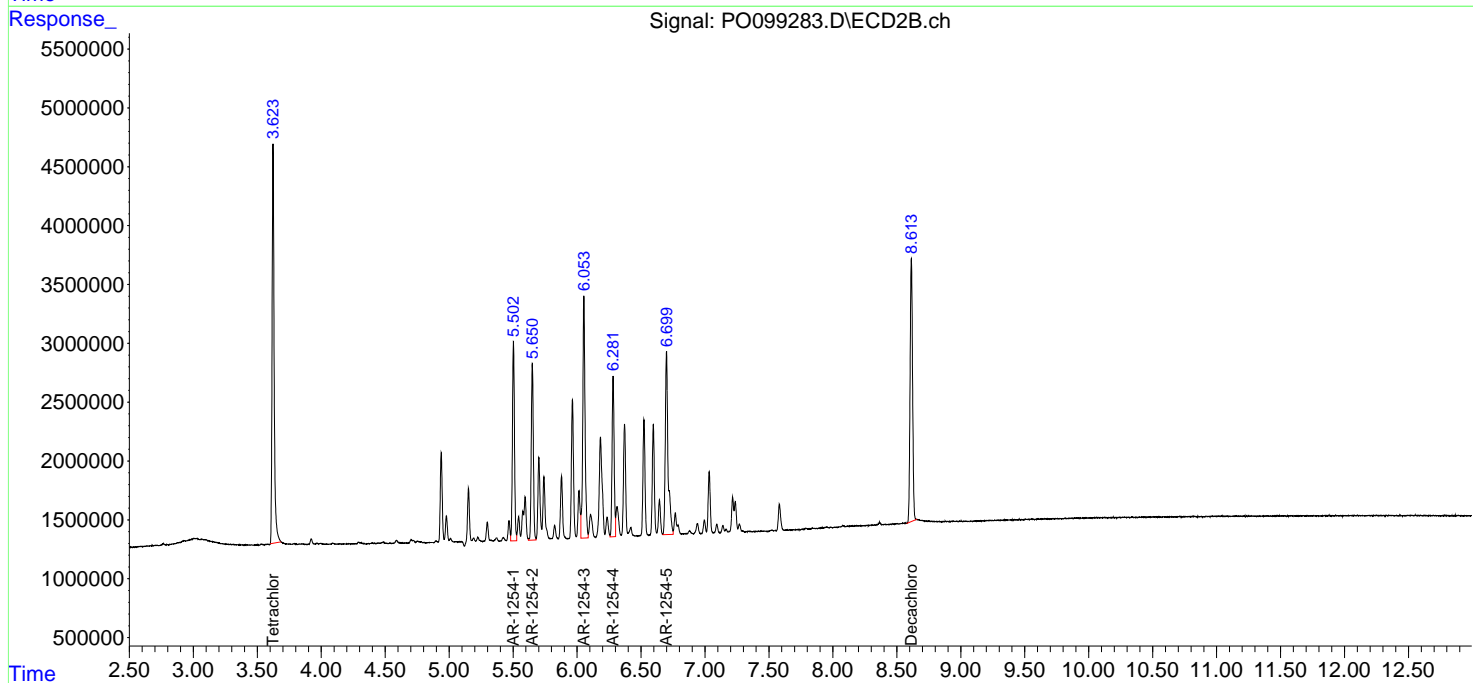
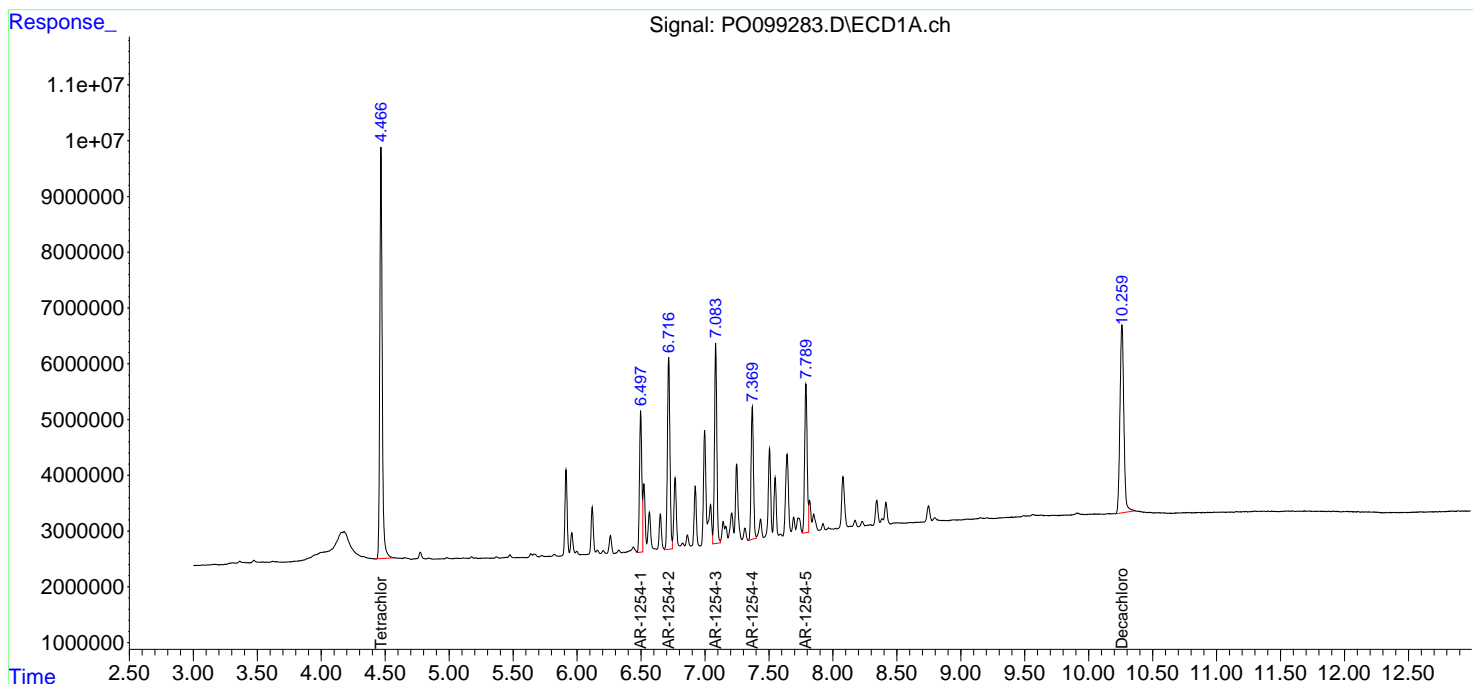
Instrument :
 ECD_0
 ClientSampleId :
 AR1254CCC500

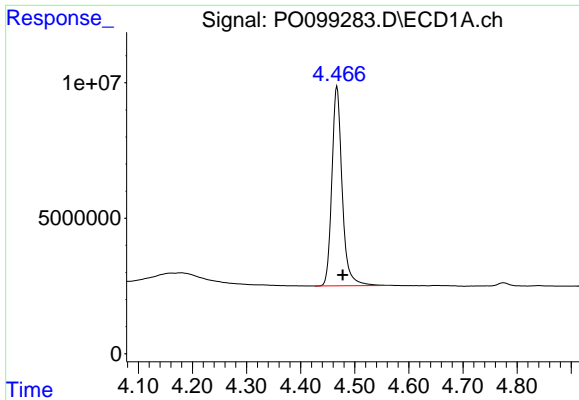
Manual Integrations
 APPROVED

Reviewed By :Yogesh Patel 11/06/2023
 Supervised By :Ankita Jodhani 11/06/2023

Integration File signal 1: autoint1.e
 Integration File signal 2: autoint2.e
 Quant Time: Nov 02 23:14:44 2023
 Quant Method : Z:\pestpcbsrv\HPCHEM1\ECD_0\methods\PO102523.M
 Quant Title : GC EXTRACTABLES
 QLast Update : Wed Oct 25 06:04:36 2023
 Response via : Initial Calibration
 Integrator: ChemStation

Volume Inj. : 2 µl
 Signal #1 Phase : ZB-MR1 Signal #2 Phase: ZB-MR2
 Signal #1 Info : 30Mx0.32mmx 0.50µm Signal #2 Info : 30M x 0.32mm x 0.25µm





#1 Tetrachloro-m-xylene

R.T.: 4.467 min
 Delta R.T.: -0.011 min
 Response: 97319444
 Conc: 49.25 ng/ml

Instrument :

ECD_O

ClientSampleId :

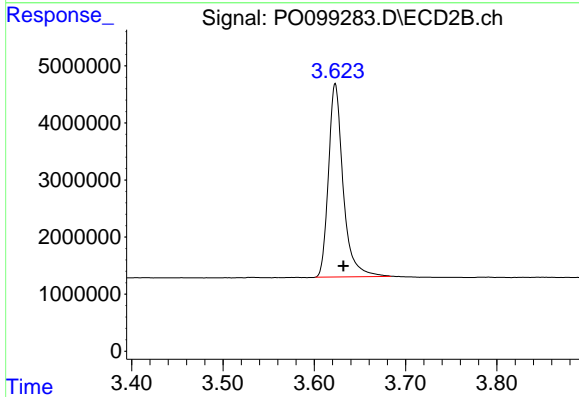
AR1254CCC500

Manual Integrations

APPROVED

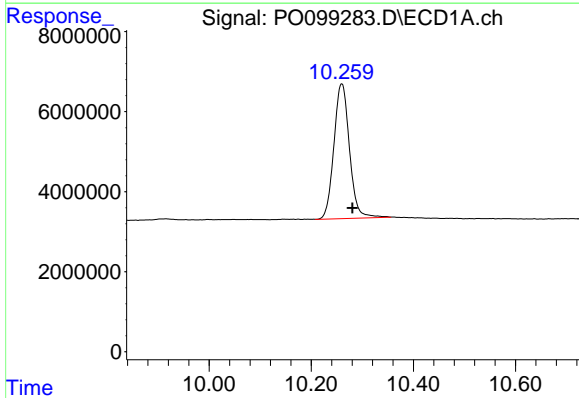
Reviewed By :Yogesh Patel 11/06/2023

Supervised By :Ankita Jodhani 11/06/2023



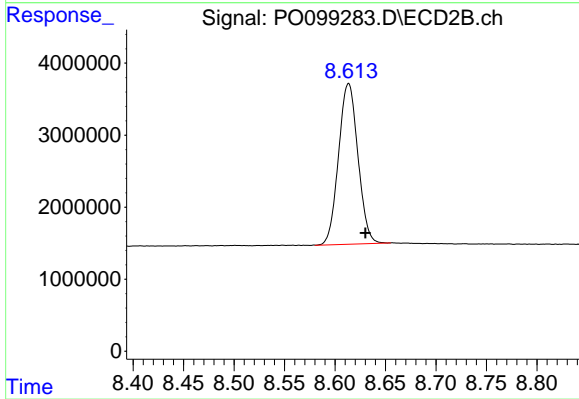
#1 Tetrachloro-m-xylene

R.T.: 3.623 min
 Delta R.T.: -0.009 min
 Response: 37768781
 Conc: 52.48 ng/ml m



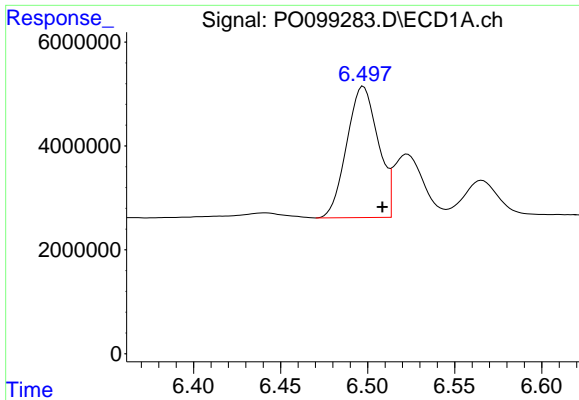
#2 Decachlorobiphenyl

R.T.: 10.259 min
 Delta R.T.: -0.021 min
 Response: 71364528
 Conc: 62.99 ng/ml m



#2 Decachlorobiphenyl

R.T.: 8.613 min
 Delta R.T.: -0.017 min
 Response: 29802697
 Conc: 55.55 ng/ml m



#26 AR-1254-1

R.T.: 6.498 min
 Delta R.T.: -0.011 min
 Response: 31744117
 Conc: 482.24 ng/ml

Instrument :

ECD_O

ClientSampleId :

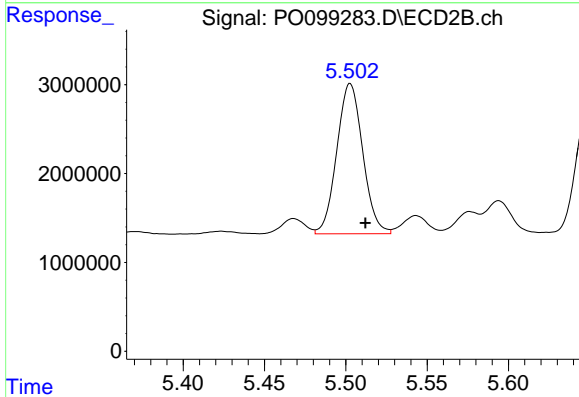
AR1254CCC500

Manual Integrations

APPROVED

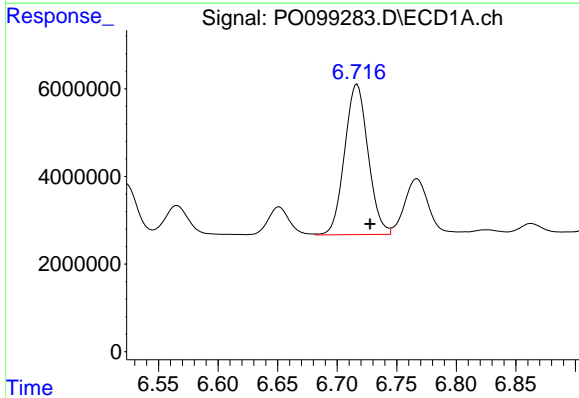
Reviewed By :Yogesh Patel 11/06/2023

Supervised By :Ankita Jodhani 11/06/2023



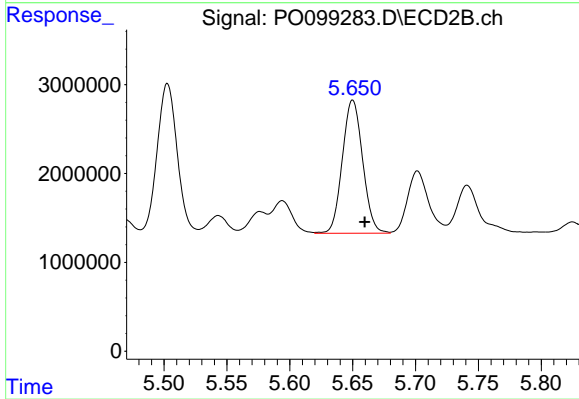
#26 AR-1254-1

R.T.: 5.503 min
 Delta R.T.: -0.009 min
 Response: 18808636
 Conc: 530.82 ng/ml



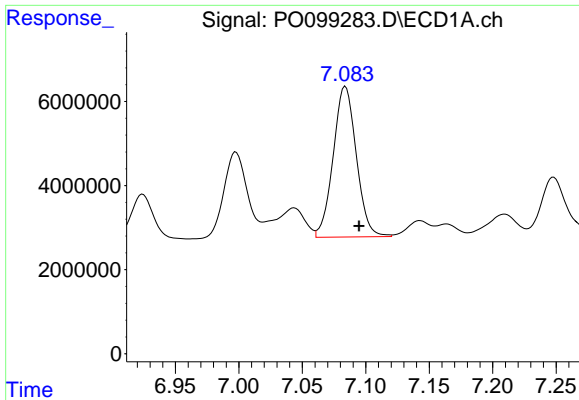
#27 AR-1254-2

R.T.: 6.717 min
 Delta R.T.: -0.011 min
 Response: 47026075
 Conc: 488.49 ng/ml



#27 AR-1254-2

R.T.: 5.650 min
 Delta R.T.: -0.010 min
 Response: 16859563
 Conc: 527.12 ng/ml



#28 AR-1254-3

R.T.: 7.084 min
 Delta R.T.: -0.011 min
 Response: 45457652
 Conc: 508.57 ng/ml

Instrument :

ECD_O

ClientSampleId :

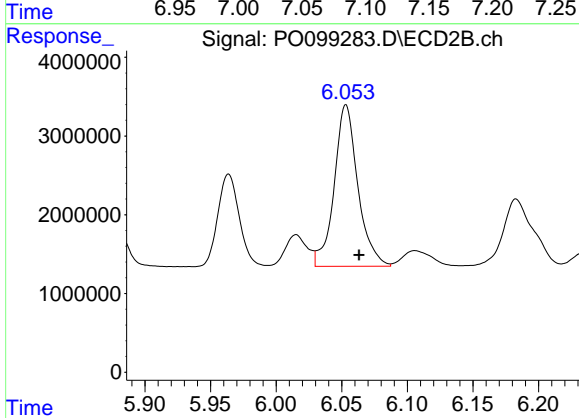
AR1254CCC500

Manual Integrations

APPROVED

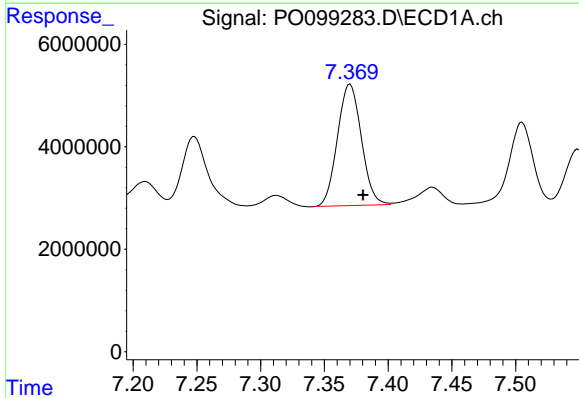
Reviewed By :Yogesh Patel 11/06/2023

Supervised By :Ankita Jodhani 11/06/2023



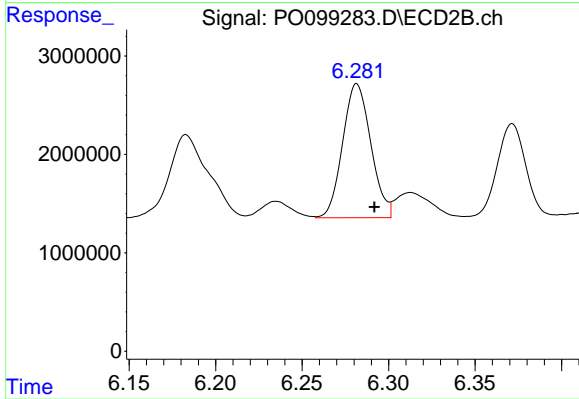
#28 AR-1254-3

R.T.: 6.053 min
 Delta R.T.: -0.010 min
 Response: 25751448
 Conc: 526.75 ng/ml



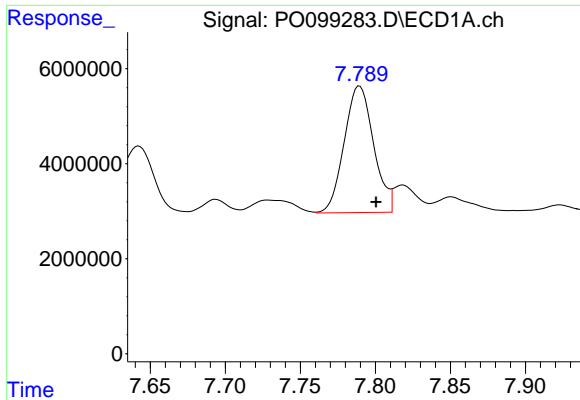
#29 AR-1254-4

R.T.: 7.369 min
 Delta R.T.: -0.011 min
 Response: 30979327
 Conc: 565.49 ng/ml m



#29 AR-1254-4

R.T.: 6.282 min
 Delta R.T.: -0.010 min
 Response: 15424060
 Conc: 588.55 ng/ml



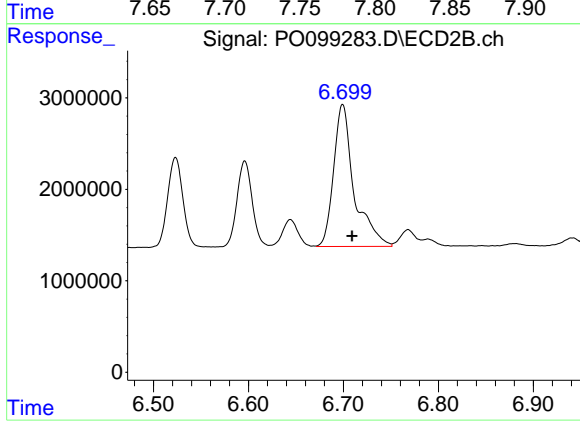
#30 AR-1254-5

R.T.: 7.790 min
Delta R.T.: -0.011 min
Response: 36375427
Conc: 540.22 ng/ml

Instrument :
ECD_O
ClientSampleId :
AR1254CCC500

Manual Integrations
APPROVED

Reviewed By :Yogesh Patel 11/06/2023
Supervised By :Ankita Jodhani 11/06/2023



#30 AR-1254-5

R.T.: 6.699 min
Delta R.T.: -0.010 min
Response: 23300112
Conc: 552.73 ng/ml