

Data Path : Z:\pestpcbsrv\HPCHEM1\ECD_0\Data\PO110223\
 Data File : PO099284.D
 Signal(s) : Signal #1: ECD1A.ch Signal #2: ECD2B.ch
 Acq On : 02 Nov 2023 11:19
 Operator : YP/AJ
 Sample : I.BLK
 Misc :
 ALS Vial : 2 Sample Multiplier: 1

Instrument :
 ECD_0
ClientSampleId :
 I.BLK

Manual Integrations
APPROVED

Reviewed By :Yogesh Patel 11/03/2023
 Supervised By :mohammad ahmed 11/03/2023

Integration File signal 1: autoint1.e
 Integration File signal 2: autoint2.e
 Quant Time: Nov 02 23:15:01 2023
 Quant Method : Z:\pestpcbsrv\HPCHEM1\ECD_0\methods\PO102523.M
 Quant Title : GC EXTRACTABLES
 QLast Update : Wed Oct 25 06:04:36 2023
 Response via : Initial Calibration
 Integrator: ChemStation

Volume Inj. : 2 µl
 Signal #1 Phase : ZB-MR1 Signal #2 Phase: ZB-MR2
 Signal #1 Info : 30Mx0.32mmx 0.50µ Signal #2 Info : 30M x 0.32mm x 0.25µm

Compound	RT#1	RT#2	Resp#1	Resp#2	ng/ml	ng/ml

System Monitoring Compounds						
1) SA Tetrachlo...	4.470	3.622	37187659	14252566	18.820	19.804m
2) SA Decachlor...	10.265	8.616	26387625	11830841	23.293m	22.051m

Target Compounds

(f)=RT Delta > 1/2 Window (#)=Amounts differ by > 25% (m)=manual int.

Data Path : Z:\pestpcbsrv\HPCHEM1\ECD_0\Data\PO110223\
 Data File : PO099284.D
 Signal(s) : Signal #1: ECD1A.ch Signal #2: ECD2B.ch
 Acq On : 02 Nov 2023 11:19
 Operator : YP/AJ
 Sample : I.BLK
 Misc :
 ALS Vial : 2 Sample Multiplier: 1

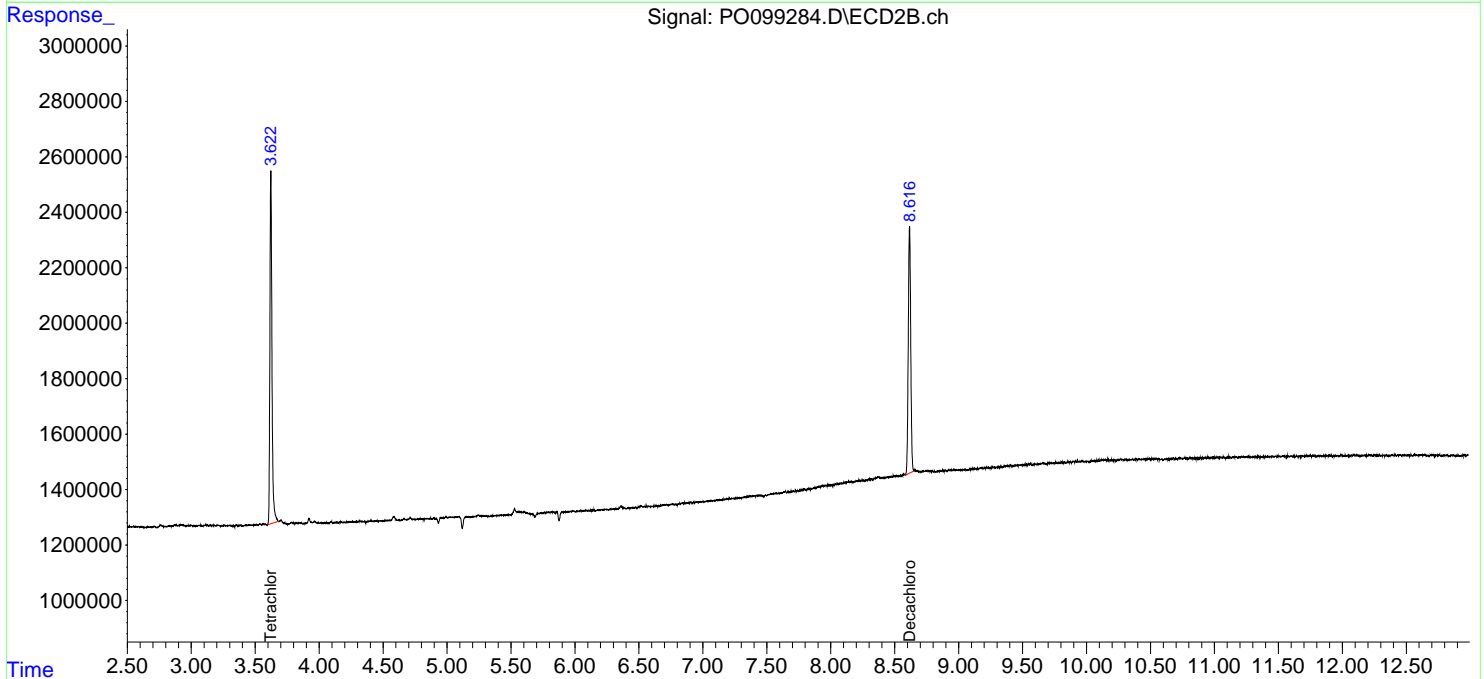
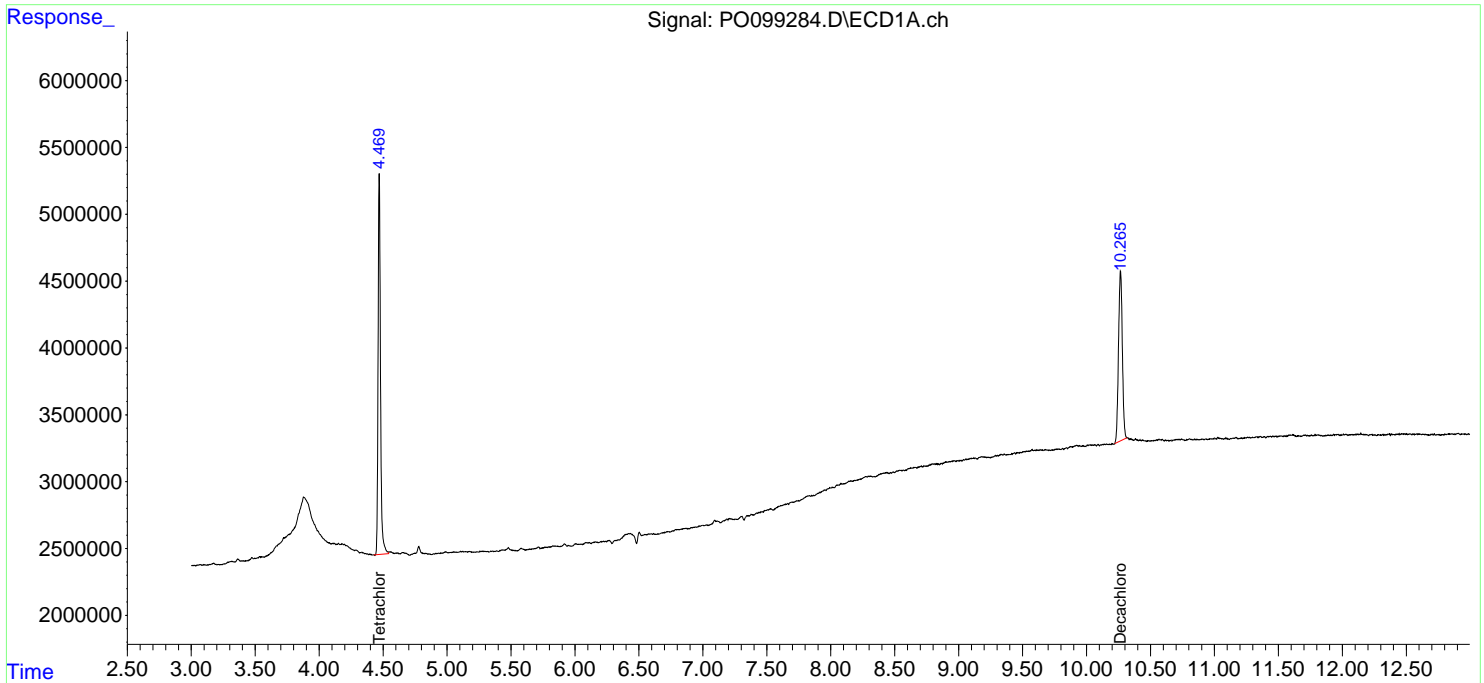
Instrument :
 ECD_0
ClientSampleId :
 I.BLK

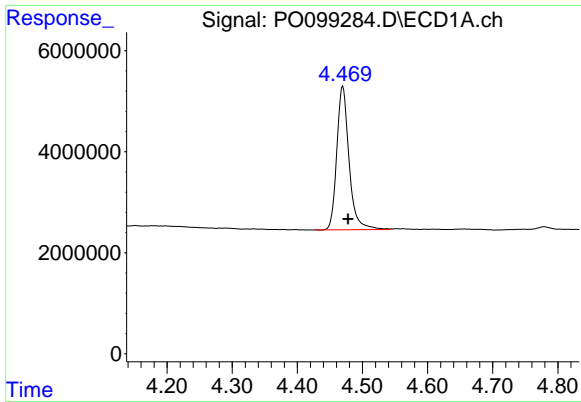
Manual Integrations
APPROVED

Reviewed By :Yogesh Patel 11/03/2023
 Supervised By :mohammad ahmed 11/03/2023

Integration File signal 1: autoint1.e
 Integration File signal 2: autoint2.e
 Quant Time: Nov 02 23:15:01 2023
 Quant Method : Z:\pestpcbsrv\HPCHEM1\ECD_0\methods\PO102523.M
 Quant Title : GC EXTRACTABLES
 QLast Update : Wed Oct 25 06:04:36 2023
 Response via : Initial Calibration
 Integrator: ChemStation

Volume Inj. : 2 µl
 Signal #1 Phase : ZB-MR1 Signal #2 Phase: ZB-MR2
 Signal #1 Info : 30Mx0.32mmx 0.50µ Signal #2 Info : 30M x 0.32mm x 0.25µm





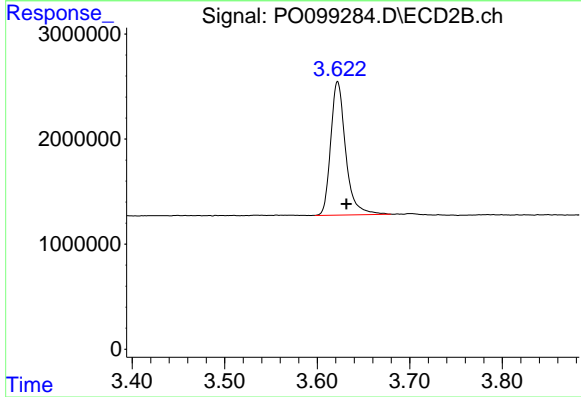
#1 Tetrachloro-m-xylene

R.T.: 4.470 min
 Delta R.T.: -0.008 min
 Response: 37187659
 Conc: 18.82 ng/ml

Instrument :
 ECD_O
 ClientSampleId :
 I.BLK

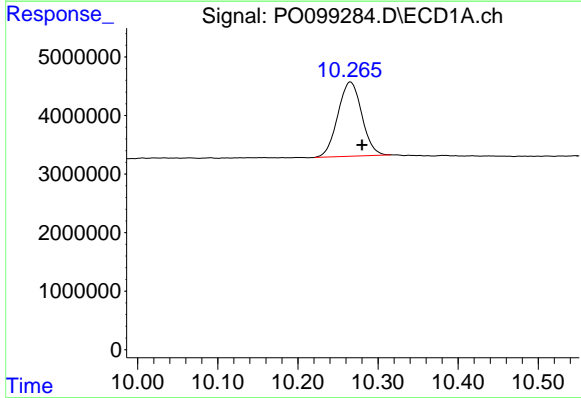
Manual Integrations
 APPROVED

Reviewed By :Yogesh Patel 11/03/2023
 Supervised By :mohammad ahmed 11/03/2023



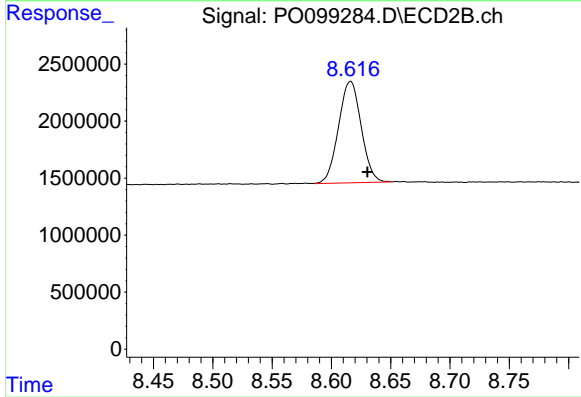
#1 Tetrachloro-m-xylene

R.T.: 3.622 min
 Delta R.T.: -0.010 min
 Response: 14252566
 Conc: 19.80 ng/ml m



#2 Decachlorobiphenyl

R.T.: 10.265 min
 Delta R.T.: -0.015 min
 Response: 26387625
 Conc: 23.29 ng/ml m



#2 Decachlorobiphenyl

R.T.: 8.616 min
 Delta R.T.: -0.014 min
 Response: 11830841
 Conc: 22.05 ng/ml m