

Data Path : Z:\pestpcbsrv\HPCHEM1\ECD_0\Data\PO110223\
 Data File : PO099297.D
 Signal(s) : Signal #1: ECD1A.ch Signal #2: ECD2B.ch
 Acq On : 02 Nov 2023 17:51
 Operator : YP/AJ
 Sample : PB156850BS
 Misc :
 ALS Vial : 18 Sample Multiplier: 1

Instrument :
 ECD_0
ClientSampleId :
 PB156850BS

Manual Integrations
APPROVED

Reviewed By :Yogesh Patel 11/03/2023
 Supervised By :mohammad ahmed 11/03/2023

Integration File signal 1: autoint1.e
 Integration File signal 2: autoint2.e
 Quant Time: Nov 02 23:18:56 2023
 Quant Method : Z:\pestpcbsrv\HPCHEM1\ECD_0\methods\PO102523.M
 Quant Title : GC EXTRACTABLES
 QLast Update : Wed Oct 25 06:04:36 2023
 Response via : Initial Calibration
 Integrator: ChemStation

Volume Inj. : 2 µl
 Signal #1 Phase : ZB-MR2 Signal #2 Phase: ZB-MR2
 Signal #1 Info : 30Mx0.32mmx 0.50µ Signal #2 Info : 30M x 0.32mm x 0.25µm

Compound	RT#1	RT#2	Resp#1	Resp#2	ng/ml	ng/ml

System Monitoring Compounds						
1) SA Tetrachlo...	4.467	3.623	39892178	14150796	20.189	19.663m
2) SA Decachlor...	10.257	8.613	27276242	12369494	24.077m	23.055m
Target Compounds						
3) L1 AR-1016-1	5.639	4.702	26454305	11453111	480.408m	511.438m
4) L1 AR-1016-2	5.662	4.721	38225055	15338928	462.270	490.741
5) L1 AR-1016-3	5.724	4.896	24349292	8235086	473.057	486.340
6) L1 AR-1016-4	5.823	4.938	18855046	6947454	463.914m	480.535
7) L1 AR-1016-5	6.118	5.151	19486631	8777179	459.123m	469.823
31) L7 AR-1260-1	7.247	6.183	32974157	16474211	460.141	467.017
32) L7 AR-1260-2	7.505	6.371	37639552	19068929	477.073	475.695
33) L7 AR-1260-3	7.864	6.523	24727398	17971253	452.776	475.268m
34) L7 AR-1260-4	8.090	6.995	29367531	13327539	468.705m	461.217
35) L7 AR-1260-5	8.415	7.238	52187727	28835097	487.665	479.150

(f)=RT Delta > 1/2 Window (#)=Amounts differ by > 25% (m)=manual int.

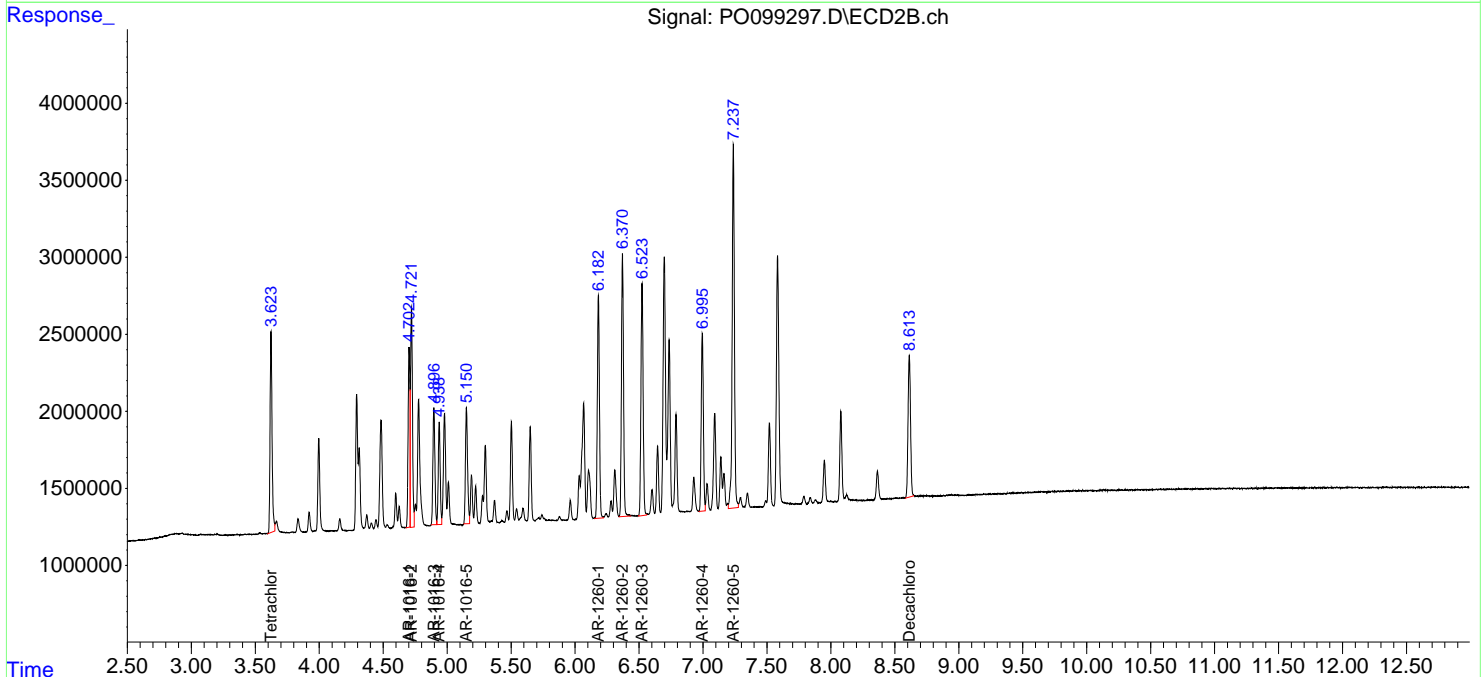
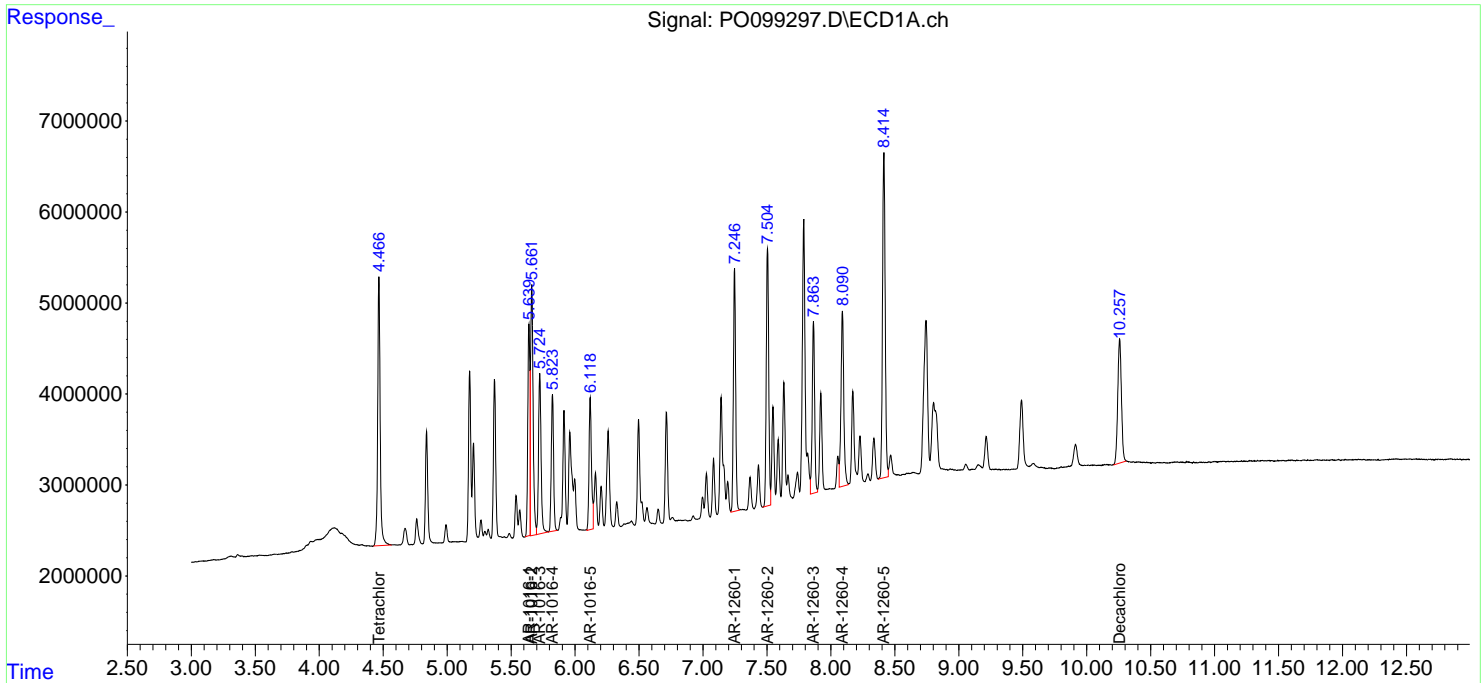
Data Path : Z:\pestpcbsrv\HPCHEM1\ECD_O\Data\PO110223\
 Data File : PO099297.D
 Signal(s) : Signal #1: ECD1A.ch Signal #2: ECD2B.ch
 Acq On : 02 Nov 2023 17:51
 Operator : YP/AJ
 Sample : PB156850BS
 Misc :
 ALS Vial : 18 Sample Multiplier: 1

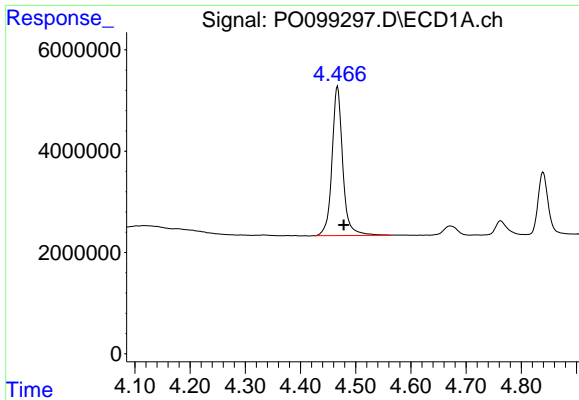
Instrument :
 ECD_O
ClientSampleId :
 PB156850BS

Manual Integrations
APPROVED
 Reviewed By :Yogesh Patel 11/03/2023
 Supervised By :mohammad ahmed 11/03/2023

Integration File signal 1: autoint1.e
 Integration File signal 2: autoint2.e
 Quant Time: Nov 02 23:18:56 2023
 Quant Method : Z:\pestpcbsrv\HPCHEM1\ECD_O\methods\PO102523.M
 Quant Title : GC EXTRACTABLES
 QLast Update : Wed Oct 25 06:04:36 2023
 Response via : Initial Calibration
 Integrator: ChemStation

Volume Inj. : 2 µl
 Signal #1 Phase : ZB-MR1 Signal #2 Phase: ZB-MR2
 Signal #1 Info : 30Mx0.32mmx 0.50µ Signal #2 Info : 30M x 0.32mm x 0.25µm





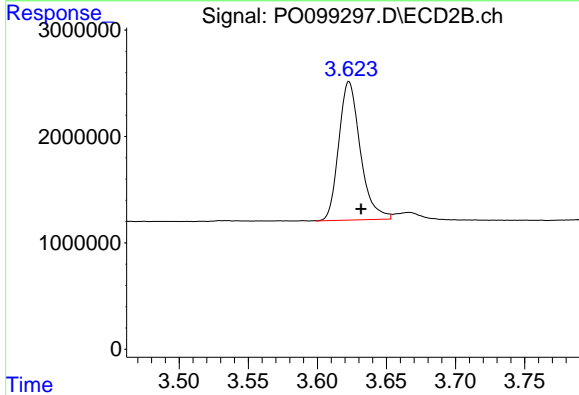
#1 Tetrachloro-m-xylene

R.T.: 4.467 min
 Delta R.T.: -0.011 min
 Response: 39892178
 Conc: 20.19 ng/ml

Instrument :
 ECD_O
 ClientSampleId :
 PB156850BS

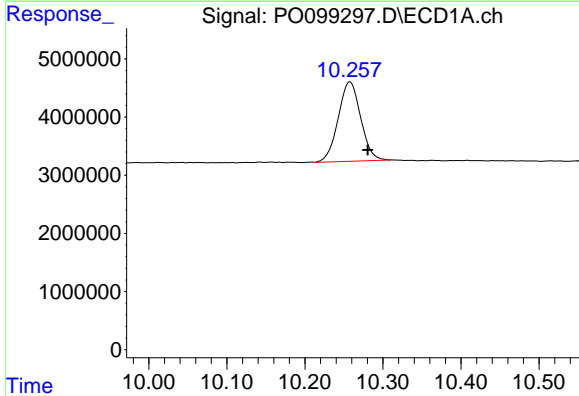
Manual Integrations
 APPROVED

Reviewed By :Yogesh Patel 11/03/2023
 Supervised By :mohammad ahmed 11/03/2023



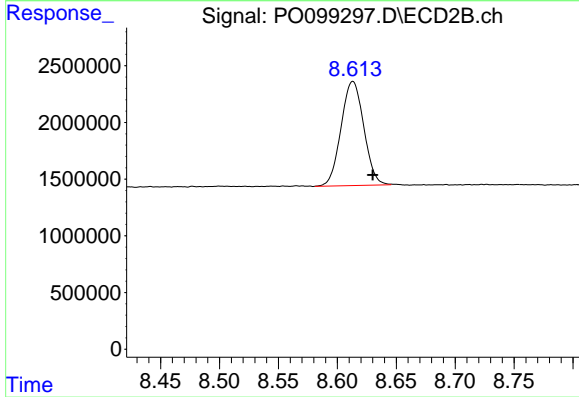
#1 Tetrachloro-m-xylene

R.T.: 3.623 min
 Delta R.T.: -0.009 min
 Response: 14150796
 Conc: 19.66 ng/ml m



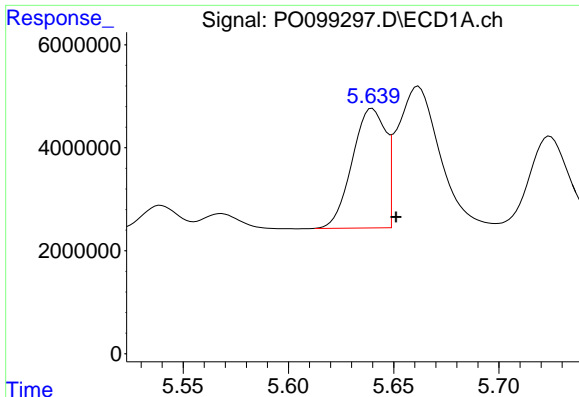
#2 Decachlorobiphenyl

R.T.: 10.257 min
 Delta R.T.: -0.023 min
 Response: 27276242
 Conc: 24.08 ng/ml m



#2 Decachlorobiphenyl

R.T.: 8.613 min
 Delta R.T.: -0.017 min
 Response: 12369494
 Conc: 23.05 ng/ml m



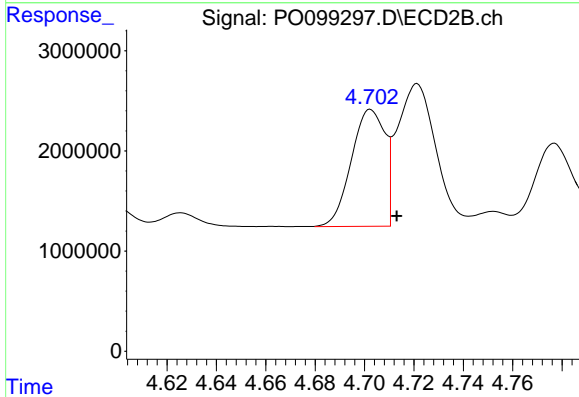
#3 AR-1016-1

R.T.: 5.639 min
 Delta R.T.: -0.012 min
 Response: 26454305
 Conc: 480.41 ng/ml

Instrument :
 ECD_O
 ClientSampleId :
 PB156850BS

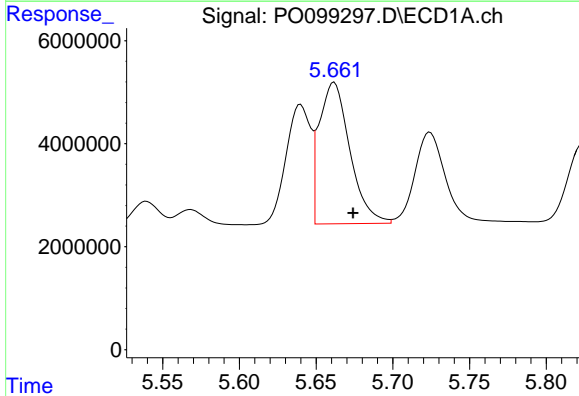
Manual Integrations
 APPROVED

Reviewed By :Yogesh Patel 11/03/2023
 Supervised By :mohammad ahmed 11/03/2023



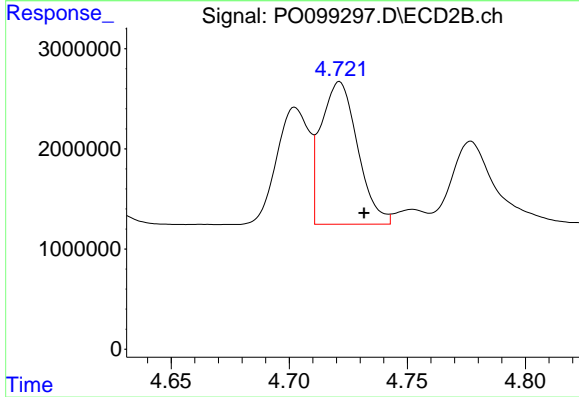
#3 AR-1016-1

R.T.: 4.702 min
 Delta R.T.: -0.011 min
 Response: 11453111
 Conc: 511.44 ng/ml m



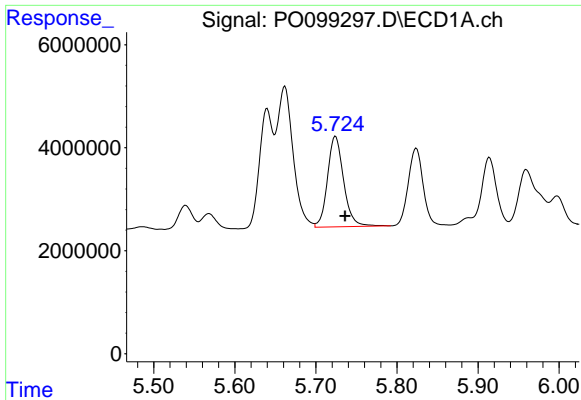
#4 AR-1016-2

R.T.: 5.662 min
 Delta R.T.: -0.012 min
 Response: 38225055
 Conc: 462.27 ng/ml



#4 AR-1016-2

R.T.: 4.721 min
 Delta R.T.: -0.010 min
 Response: 15338928
 Conc: 490.74 ng/ml



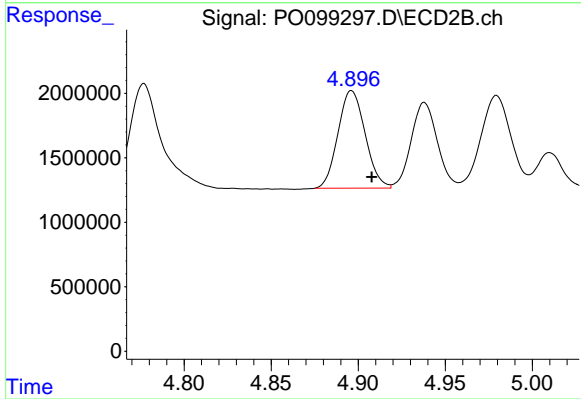
#5 AR-1016-3

R.T.: 5.724 min
 Delta R.T.: -0.012 min
 Response: 24349292
 Conc: 473.06 ng/ml

Instrument :
 ECD_O
 ClientSampleId :
 PB156850BS

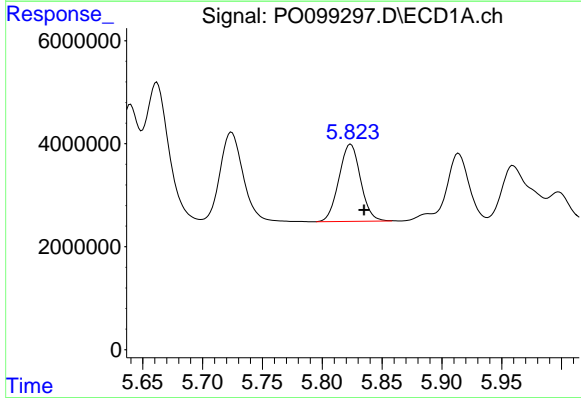
Manual Integrations
 APPROVED

Reviewed By :Yogesh Patel 11/03/2023
 Supervised By :mohammad ahmed 11/03/2023



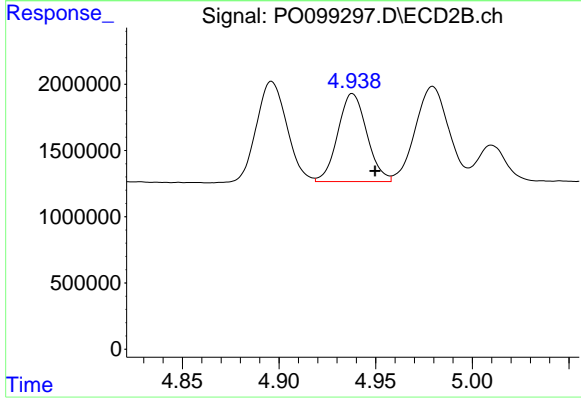
#5 AR-1016-3

R.T.: 4.896 min
 Delta R.T.: -0.012 min
 Response: 8235086
 Conc: 486.34 ng/ml



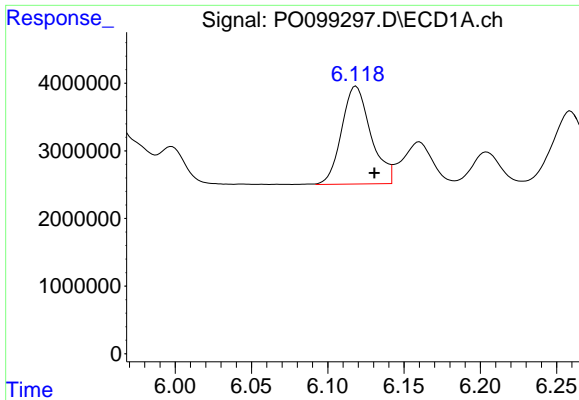
#6 AR-1016-4

R.T.: 5.823 min
 Delta R.T.: -0.012 min
 Response: 18855046
 Conc: 463.91 ng/ml m



#6 AR-1016-4

R.T.: 4.938 min
 Delta R.T.: -0.012 min
 Response: 6947454
 Conc: 480.54 ng/ml



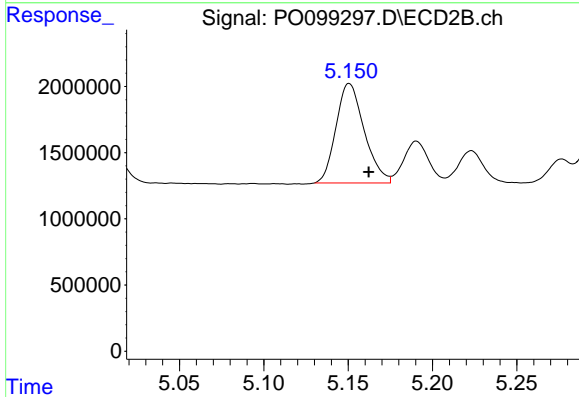
#7 AR-1016-5

R.T.: 6.118 min
 Delta R.T.: -0.013 min
 Response: 19486631
 Conc: 459.12 ng/ml

Instrument :
 ECD_O
 ClientSampleId :
 PB156850BS

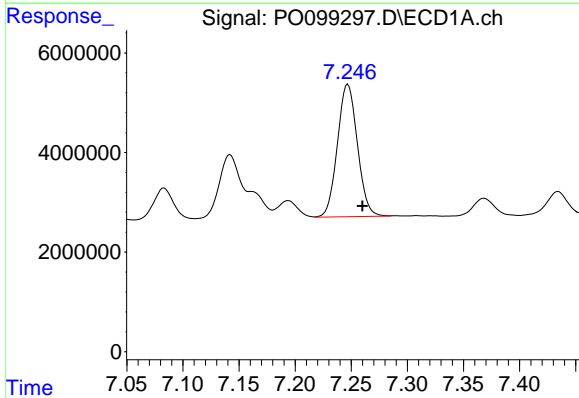
Manual Integrations
 APPROVED

Reviewed By :Yogesh Patel 11/03/2023
 Supervised By :mohammad ahmed 11/03/2023



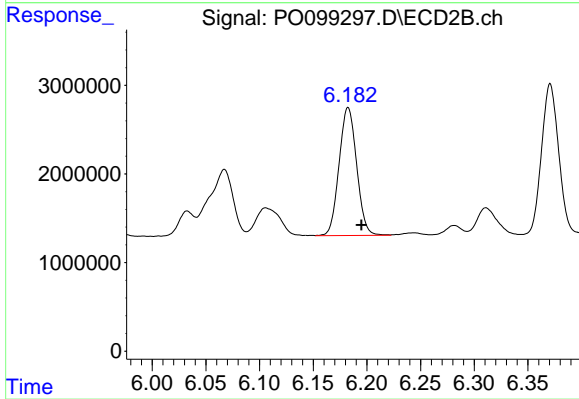
#7 AR-1016-5

R.T.: 5.151 min
 Delta R.T.: -0.012 min
 Response: 8777179
 Conc: 469.82 ng/ml



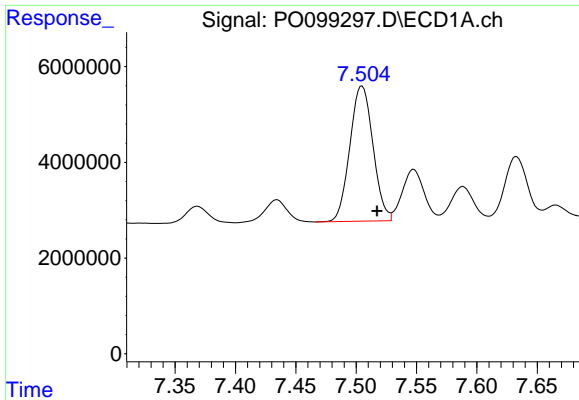
#31 AR-1260-1

R.T.: 7.247 min
 Delta R.T.: -0.013 min
 Response: 32974157
 Conc: 460.14 ng/ml



#31 AR-1260-1

R.T.: 6.183 min
 Delta R.T.: -0.012 min
 Response: 16474211
 Conc: 467.02 ng/ml



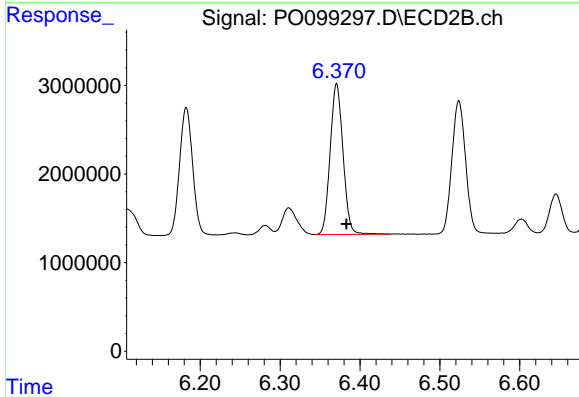
#32 AR-1260-2

R.T.: 7.505 min
 Delta R.T.: -0.012 min
 Response: 37639552
 Conc: 477.07 ng/ml

Instrument :
 ECD_O
 ClientSampleId :
 PB156850BS

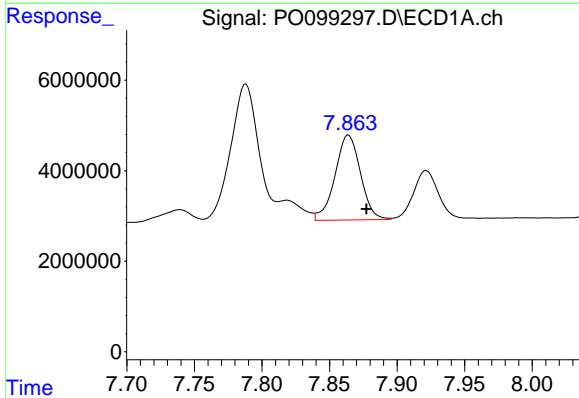
Manual Integrations
 APPROVED

Reviewed By :Yogesh Patel 11/03/2023
 Supervised By :mohammad ahmed 11/03/2023



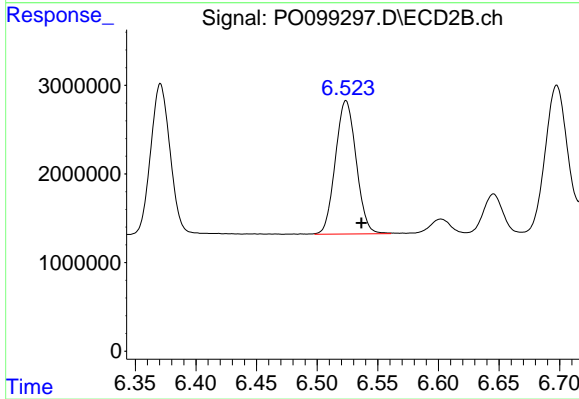
#32 AR-1260-2

R.T.: 6.371 min
 Delta R.T.: -0.012 min
 Response: 19068929
 Conc: 475.69 ng/ml



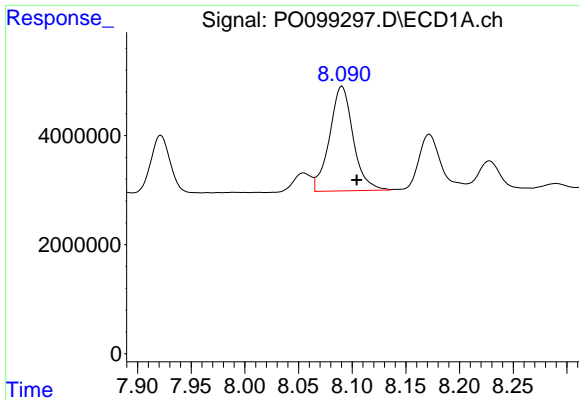
#33 AR-1260-3

R.T.: 7.864 min
 Delta R.T.: -0.013 min
 Response: 24727398
 Conc: 452.78 ng/ml



#33 AR-1260-3

R.T.: 6.523 min
 Delta R.T.: -0.013 min
 Response: 17971253
 Conc: 475.27 ng/ml m



#34 AR-1260-4

R.T.: 8.090 min
 Delta R.T.: -0.015 min
 Response: 29367531
 Conc: 468.70 ng/ml

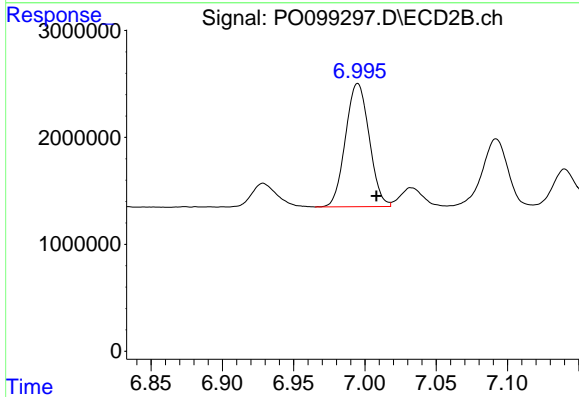
Instrument :

ECD_O

ClientSampleId :
 PB156850BS

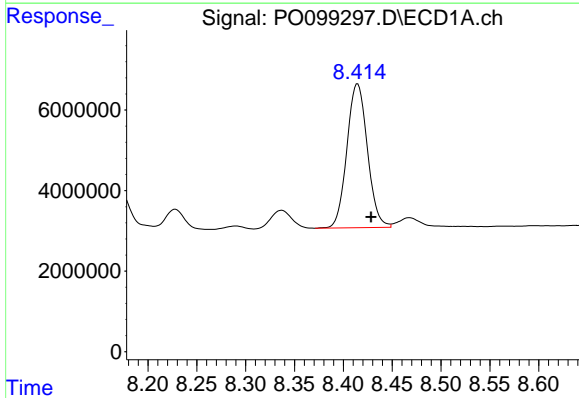
Manual Integrations
 APPROVED

Reviewed By :Yogesh Patel 11/03/2023
 Supervised By :mohammad ahmed 11/03/2023



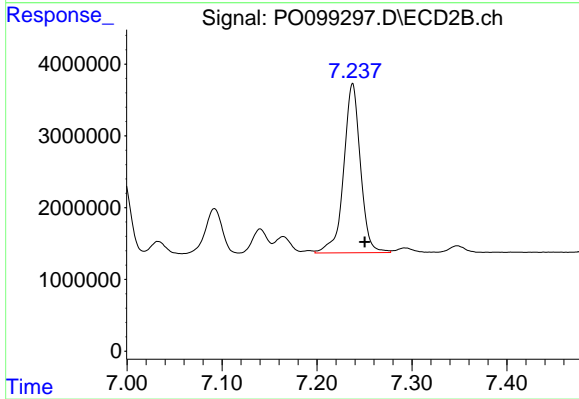
#34 AR-1260-4

R.T.: 6.995 min
 Delta R.T.: -0.013 min
 Response: 13327539
 Conc: 461.22 ng/ml



#35 AR-1260-5

R.T.: 8.415 min
 Delta R.T.: -0.014 min
 Response: 52187727
 Conc: 487.66 ng/ml



#35 AR-1260-5

R.T.: 7.238 min
 Delta R.T.: -0.013 min
 Response: 28835097
 Conc: 479.15 ng/ml