

Data Path : Z:\pestpcbsrv\HPCHEM1\ECD_0\Data\PO110223\
 Data File : PO099298.D
 Signal(s) : Signal #1: ECD1A.ch Signal #2: ECD2B.ch
 Acq On : 02 Nov 2023 18:08
 Operator : YP/AJ
 Sample : 05212-01
 Misc :
 ALS Vial : 19 Sample Multiplier: 1

Instrument :
 ECD_0
ClientSampleId :
 MIXED-DEMO

Manual Integrations
APPROVED
 Reviewed By :Yogesh Patel 11/03/2023
 Supervised By :mohammad ahmed 11/03/2023

Integration File signal 1: autoint1.e
 Integration File signal 2: autoint2.e
 Quant Time: Nov 02 23:19:15 2023
 Quant Method : Z:\pestpcbsrv\HPCHEM1\ECD_0\methods\PO102523.M
 Quant Title : GC EXTRACTABLES
 QLast Update : Wed Oct 25 06:04:36 2023
 Response via : Initial Calibration
 Integrator: ChemStation

Volume Inj. : 2 µl
 Signal #1 Phase : ZB-MR1 Signal #2 Phase: ZB-MR2
 Signal #1 Info : 30Mx0.32mmx 0.50µ Signal #2 Info : 30M x 0.32mm x 0.25µm

Compound	RT#1	RT#2	Resp#1	Resp#2	ng/ml	ng/ml

System Monitoring Compounds						
1) SA Tetrachlo...	4.466	3.622	44748180	16797682	22.647	23.341m
2) SA Decachlor...	10.257	8.612	30983291	11912561	27.349m	22.203m

Target Compounds

(f)=RT Delta > 1/2 Window (#)=Amounts differ by > 25% (m)=manual int.

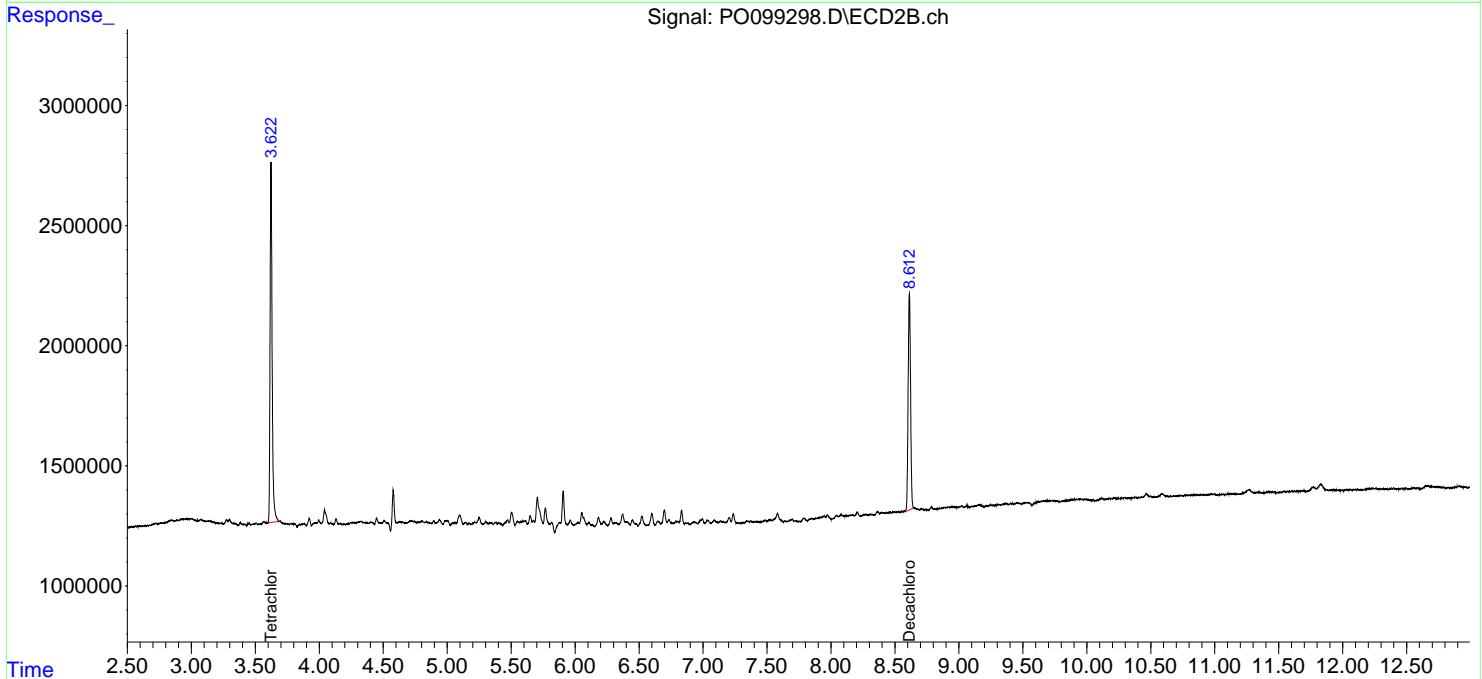
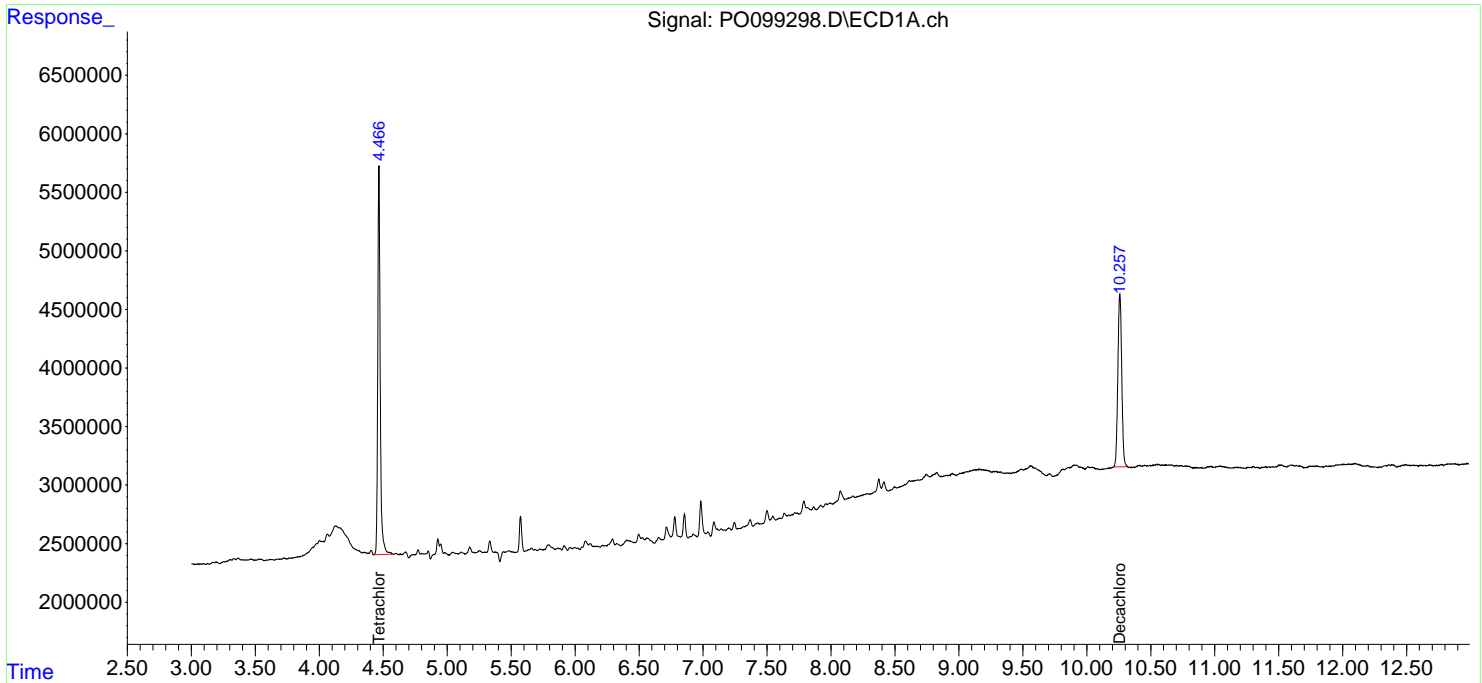
Data Path : Z:\pestpcbsrv\HPCHEM1\ECD_0\Data\PO110223\
 Data File : PO099298.D
 Signal(s) : Signal #1: ECD1A.ch Signal #2: ECD2B.ch
 Acq On : 02 Nov 2023 18:08
 Operator : YP/AJ
 Sample : 05212-01
 Misc :
 ALS Vial : 19 Sample Multiplier: 1

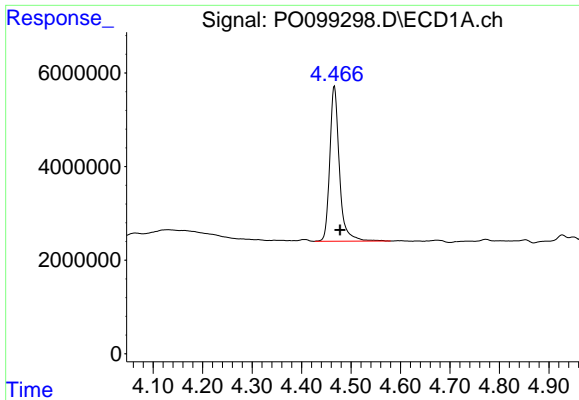
Instrument :
 ECD_0
ClientSampleId :
 MIXED-DEMO

Manual Integrations
APPROVED
 Reviewed By :Yogesh Patel 11/03/2023
 Supervised By :mohammad ahmed 11/03/2023

Integration File signal 1: autoint1.e
 Integration File signal 2: autoint2.e
 Quant Time: Nov 02 23:19:15 2023
 Quant Method : Z:\pestpcbsrv\HPCHEM1\ECD_0\methods\PO102523.M
 Quant Title : GC EXTRACTABLES
 QLast Update : Wed Oct 25 06:04:36 2023
 Response via : Initial Calibration
 Integrator: ChemStation

Volume Inj. : 2 µl
 Signal #1 Phase : ZB-MR1 Signal #2 Phase: ZB-MR2
 Signal #1 Info : 30Mx0.32mmx 0.50µ Signal #2 Info : 30M x 0.32mm x 0.25µm

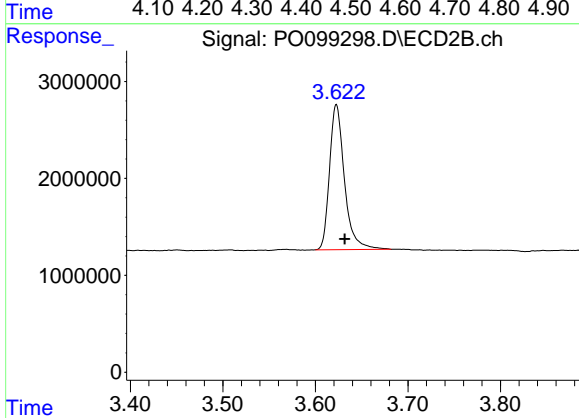




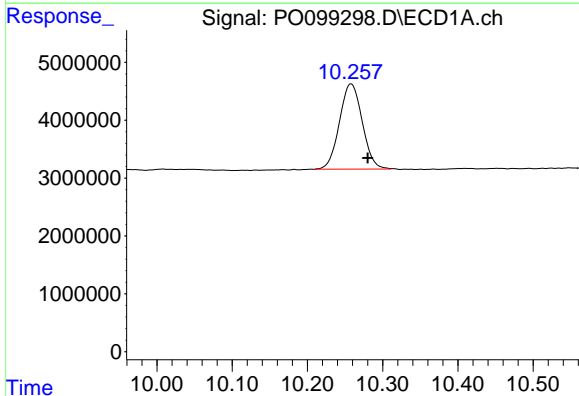
#1 Tetrachloro-m-xylene
 R.T.: 4.466 min
 Delta R.T.: -0.012 min
 Response: 44748180
 Conc: 22.65 ng/ml

Instrument :
 ECD_O
 ClientSampleId :
 MIXED-DEMO

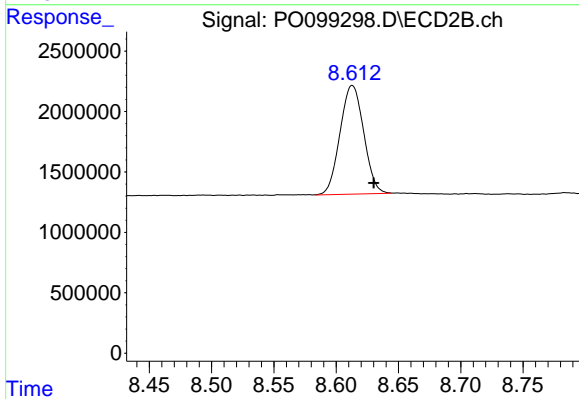
Manual Integrations
APPROVED
 Reviewed By :Yogesh Patel 11/03/2023
 Supervised By :mohammad ahmed 11/03/2023



#1 Tetrachloro-m-xylene
 R.T.: 3.622 min
 Delta R.T.: -0.009 min
 Response: 16797682
 Conc: 23.34 ng/ml m



#2 Decachlorobiphenyl
 R.T.: 10.257 min
 Delta R.T.: -0.023 min
 Response: 30983291
 Conc: 27.35 ng/ml m



#2 Decachlorobiphenyl
 R.T.: 8.612 min
 Delta R.T.: -0.018 min
 Response: 11912561
 Conc: 22.20 ng/ml m