

Data Path : Z:\pestpcbsrv\HPCHEM1\ECD_0\Data\PO110223\
 Data File : PO099315.D
 Signal(s) : Signal #1: ECD1A.ch Signal #2: ECD2B.ch
 Acq On : 03 Nov 2023 00:17
 Operator : YP/AJ
 Sample : 05216-02 10X
 Misc :
 ALS Vial : 31 Sample Multiplier: 1

Instrument :
 ECD_0
ClientSampleId :
 AT-OILY-DEBRIS

Manual Integrations
APPROVED
 Reviewed By :Yogesh Patel 11/03/2023
 Supervised By :mohammad ahmed 11/03/2023

Integration File signal 1: autoint1.e
 Integration File signal 2: autoint2.e
 Quant Time: Nov 03 01:06:49 2023
 Quant Method : Z:\pestpcbsrv\HPCHEM1\ECD_0\methods\PO102523.M
 Quant Title : GC EXTRACTABLES
 QLast Update : Wed Oct 25 06:04:36 2023
 Response via : Initial Calibration
 Integrator: ChemStation

Volume Inj. : 2 µl
 Signal #1 Phase : ZB-MR1 Signal #2 Phase: ZB-MR2
 Signal #1 Info : 30Mx0.32mmx 0.50µ Signal #2 Info : 30M x 0.32mm x 0.25µm

Compound	RT#1	RT#2	Resp#1	Resp#2	ng/ml	ng/ml

System Monitoring Compounds						
1) SA Tetrachlo...	4.468	3.628	3152590	1260998	1.595	1.752
2) SA Decachlor...	10.257	8.608	3782865	685712	3.339m	1.278m#

Target Compounds

(f)=RT Delta > 1/2 Window (#)=Amounts differ by > 25% (m)=manual int.

Data Path : Z:\pestpcbsrv\HPCHEM1\ECD_O\Data\PO110223\
 Data File : PO099315.D
 Signal(s) : Signal #1: ECD1A.ch Signal #2: ECD2B.ch
 Acq On : 03 Nov 2023 00:17
 Operator : YP/AJ
 Sample : 05216-02 10X
 Misc :
 ALS Vial : 31 Sample Multiplier: 1

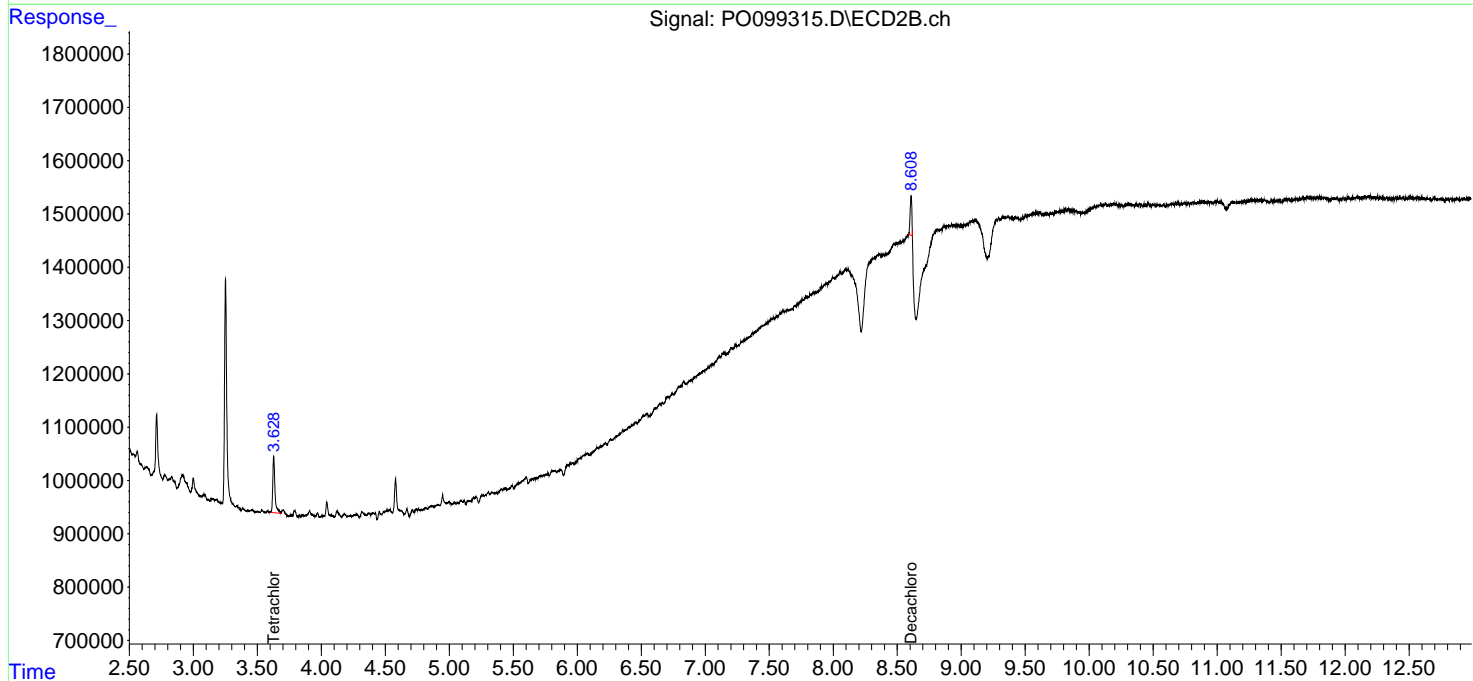
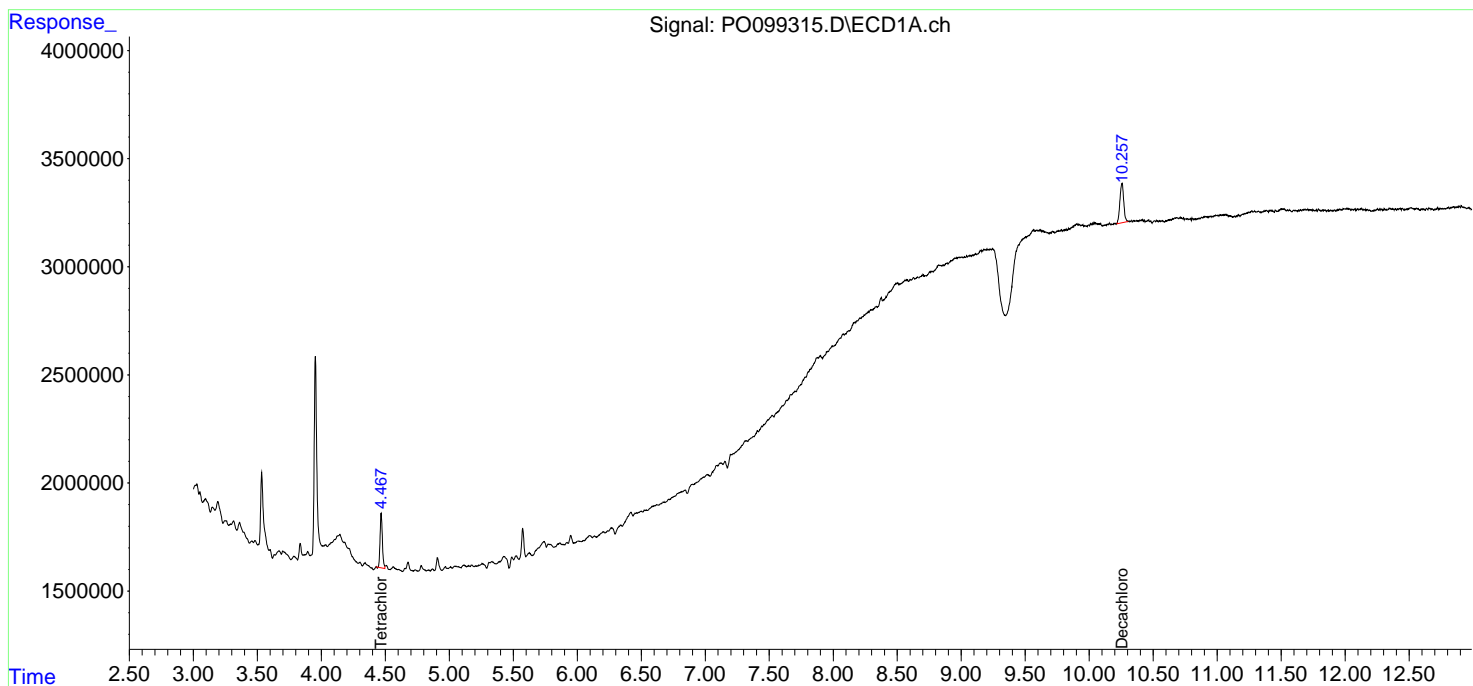
Instrument :
 ECD_O
ClientSampleId :
 AT-OILY-DEBRIS

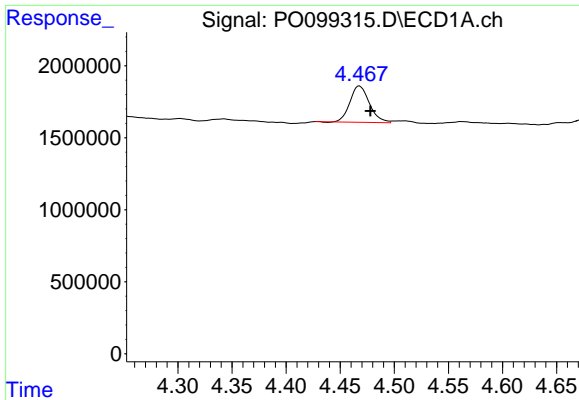
Manual Integrations
APPROVED

Reviewed By :Yogesh Patel 11/03/2023
 Supervised By :mohammad ahmed 11/03/2023

Integration File signal 1: autoint1.e
 Integration File signal 2: autoint2.e
 Quant Time: Nov 03 01:06:49 2023
 Quant Method : Z:\pestpcbsrv\HPCHEM1\ECD_O\methods\PO102523.M
 Quant Title : GC EXTRACTABLES
 QLast Update : Wed Oct 25 06:04:36 2023
 Response via : Initial Calibration
 Integrator: ChemStation

Volume Inj. : 2 µl
 Signal #1 Phase : ZB-MR1 Signal #2 Phase: ZB-MR2
 Signal #1 Info : 30Mx0.32mmx 0.50µm Signal #2 Info : 30M x 0.32mm x 0.25µm

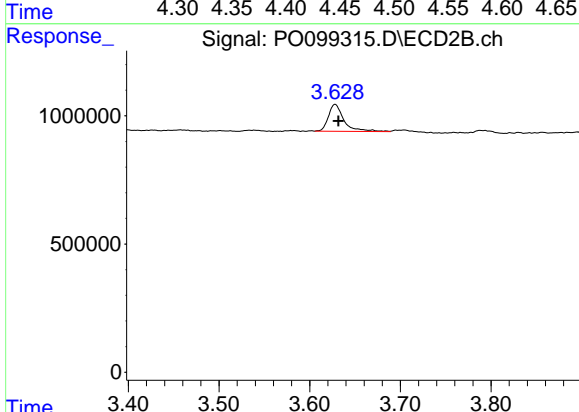




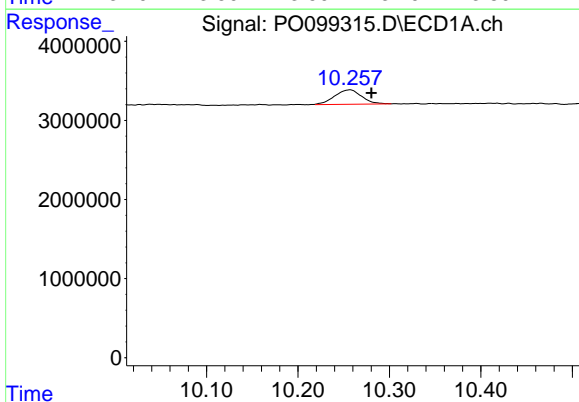
#1 Tetrachloro-m-xylene
 R.T.: 4.468 min
 Delta R.T.: -0.010 min
 Response: 3152590
 Conc: 1.60 ng/ml

Instrument : ECD_O
 ClientSampleId : AT-OILY-DEBRIS

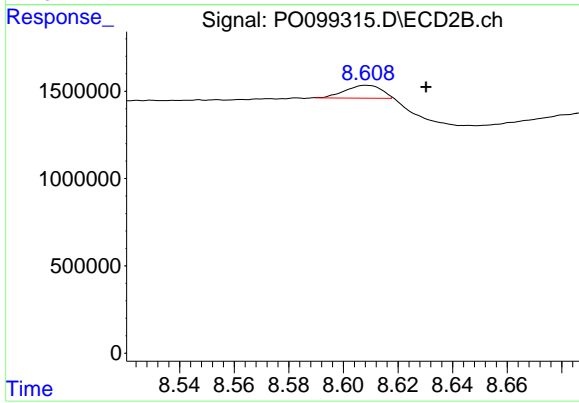
Manual Integrations
APPROVED
 Reviewed By :Yogesh Patel 11/03/2023
 Supervised By :mohammad ahmed 11/03/2023



#1 Tetrachloro-m-xylene
 R.T.: 3.628 min
 Delta R.T.: -0.004 min
 Response: 1260998
 Conc: 1.75 ng/ml



#2 Decachlorobiphenyl
 R.T.: 10.257 min
 Delta R.T.: -0.023 min
 Response: 3782865
 Conc: 3.34 ng/ml m



#2 Decachlorobiphenyl
 R.T.: 8.608 min
 Delta R.T.: -0.022 min
 Response: 685712
 Conc: 1.28 ng/ml m