

Data Path : Z:\pestpcbsrv\HPCHEM1\ECD\_0\Data\PO110223\  
 Data File : PO099318.D  
 Signal(s) : Signal #1: ECD1A.ch Signal #2: ECD2B.ch  
 Acq On : 03 Nov 2023 01:07  
 Operator : YP/AJ  
 Sample : 05131-02  
 Misc :  
 ALS Vial : 34 Sample Multiplier: 1

**Instrument :**  
 ECD\_0  
**ClientSampleId :**  
 W-2

**Manual Integrations**  
**APPROVED**

Reviewed By :Yogesh Patel 11/03/2023  
 Supervised By :mohammad ahmed 11/03/2023

Integration File signal 1: autoint1.e  
 Integration File signal 2: autoint2.e  
 Quant Time: Nov 03 02:52:33 2023  
 Quant Method : Z:\pestpcbsrv\HPCHEM1\ECD\_0\methods\PO102523.M  
 Quant Title : GC EXTRACTABLES  
 QLast Update : Wed Oct 25 06:04:36 2023  
 Response via : Initial Calibration  
 Integrator: ChemStation

Volume Inj. : 2 µl  
 Signal #1 Phase : ZB-MR1 Signal #2 Phase: ZB-MR2  
 Signal #1 Info : 30Mx0.32mmx 0.50µ Signal #2 Info : 30M x 0.32mm x 0.25µm

| Compound                    | RT#1   | RT#2  | Resp#1   | Resp#2   | ng/ml   | ng/ml  |
|-----------------------------|--------|-------|----------|----------|---------|--------|
| -----                       |        |       |          |          |         |        |
| System Monitoring Compounds |        |       |          |          |         |        |
| 1) SA Tetrachlo...          | 4.467  | 3.625 | 45873812 | 15066427 | 23.216  | 20.935 |
| 2) SA Decachlor...          | 10.263 | 8.622 | 25434863 | 9194986  | 22.452m | 17.138 |

Target Compounds

-----  
 (f)=RT Delta > 1/2 Window (#)=Amounts differ by > 25% (m)=manual int.

Data Path : Z:\pestpcbsrv\HPCHEM1\ECD\_0\Data\PO110223\  
 Data File : PO099318.D  
 Signal(s) : Signal #1: ECD1A.ch Signal #2: ECD2B.ch  
 Acq On : 03 Nov 2023 01:07  
 Operator : YP/AJ  
 Sample : 05131-02  
 Misc :  
 ALS Vial : 34 Sample Multiplier: 1

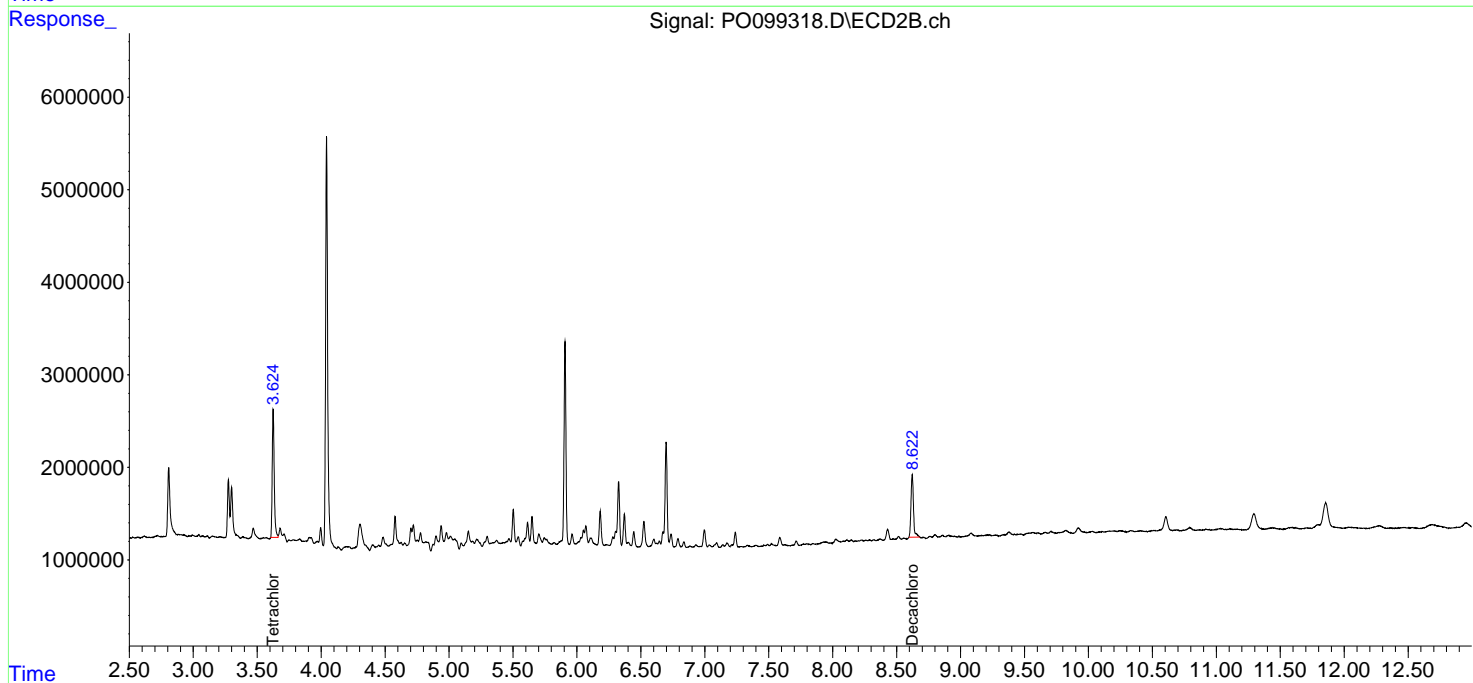
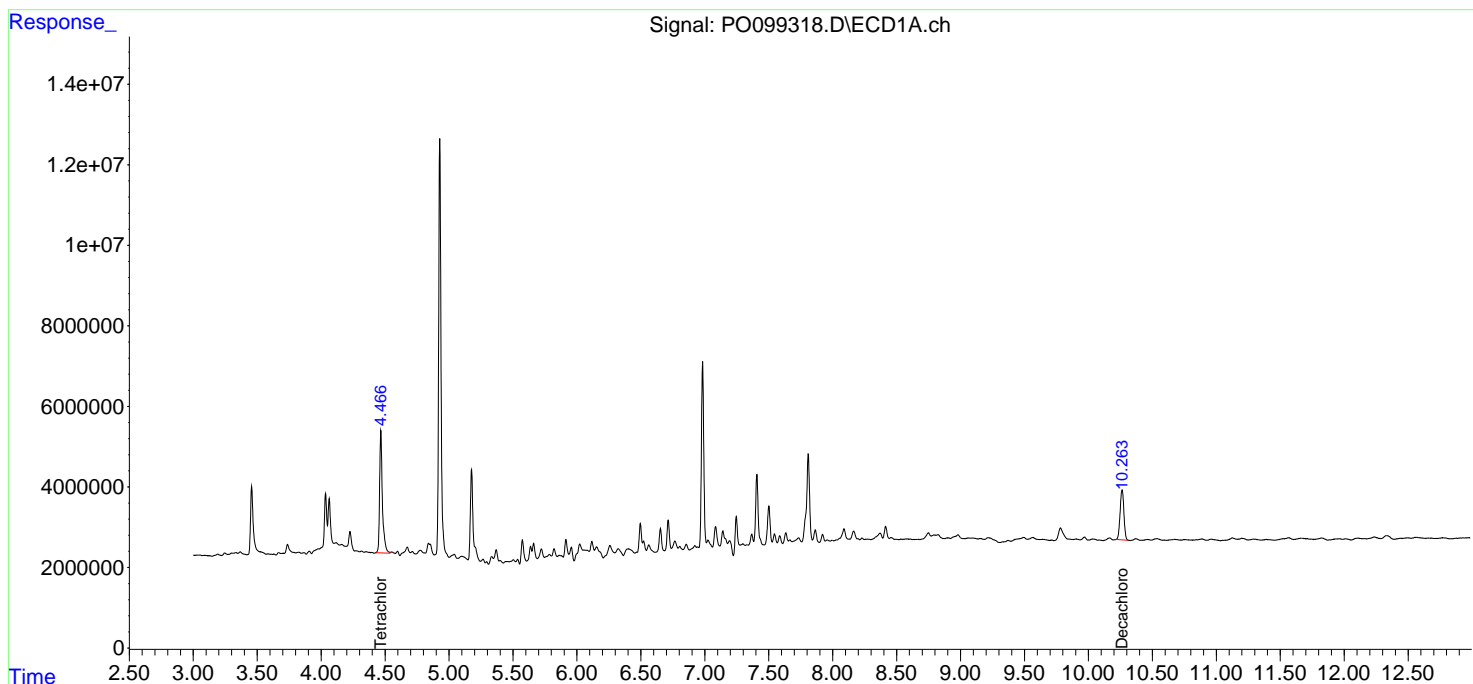
**Instrument :**  
 ECD\_0  
**ClientSampleID :**  
 W-2

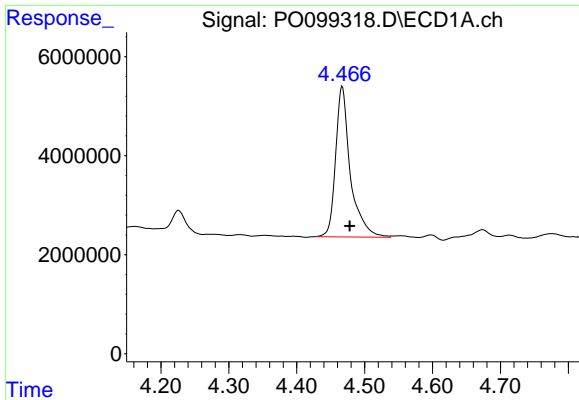
**Manual Integrations**  
**APPROVED**

Reviewed By :Yogesh Patel 11/03/2023  
 Supervised By :mohammad ahmed 11/03/2023

Integration File signal 1: autoint1.e  
 Integration File signal 2: autoint2.e  
 Quant Time: Nov 03 02:52:33 2023  
 Quant Method : Z:\pestpcbsrv\HPCHEM1\ECD\_0\methods\PO102523.M  
 Quant Title : GC EXTRACTABLES  
 QLast Update : Wed Oct 25 06:04:36 2023  
 Response via : Initial Calibration  
 Integrator: ChemStation

Volume Inj. : 2 µl  
 Signal #1 Phase : ZB-MR1 Signal #2 Phase: ZB-MR2  
 Signal #1 Info : 30Mx0.32mmx 0.50µm Signal #2 Info : 30M x 0.32mm x 0.25µm





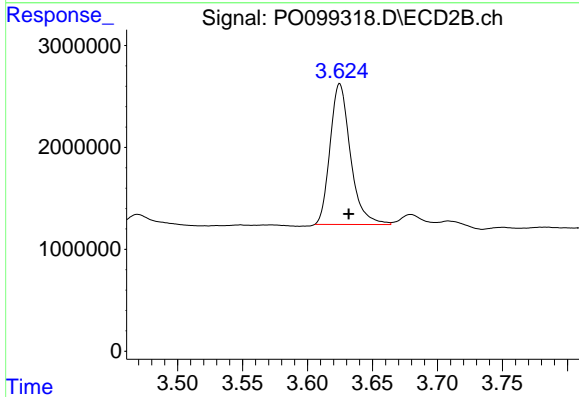
#1 Tetrachloro-m-xylene

R.T.: 4.467 min  
 Delta R.T.: -0.011 min  
 Response: 45873812  
 Conc: 23.22 ng/ml

Instrument :  
 ECD\_O  
 ClientSampleId :  
 W-2

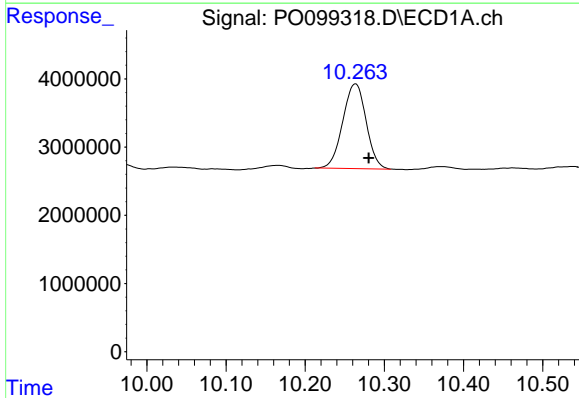
Manual Integrations  
 APPROVED

Reviewed By :Yogesh Patel 11/03/2023  
 Supervised By :mohammad ahmed 11/03/2023



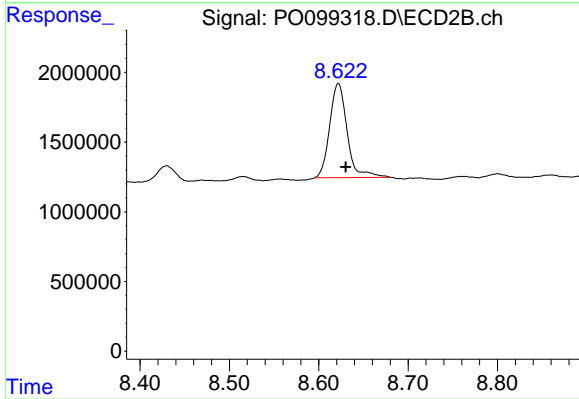
#1 Tetrachloro-m-xylene

R.T.: 3.625 min  
 Delta R.T.: -0.007 min  
 Response: 15066427  
 Conc: 20.93 ng/ml



#2 Decachlorobiphenyl

R.T.: 10.263 min  
 Delta R.T.: -0.017 min  
 Response: 25434863  
 Conc: 22.45 ng/ml m



#2 Decachlorobiphenyl

R.T.: 8.622 min  
 Delta R.T.: -0.008 min  
 Response: 9194986  
 Conc: 17.14 ng/ml